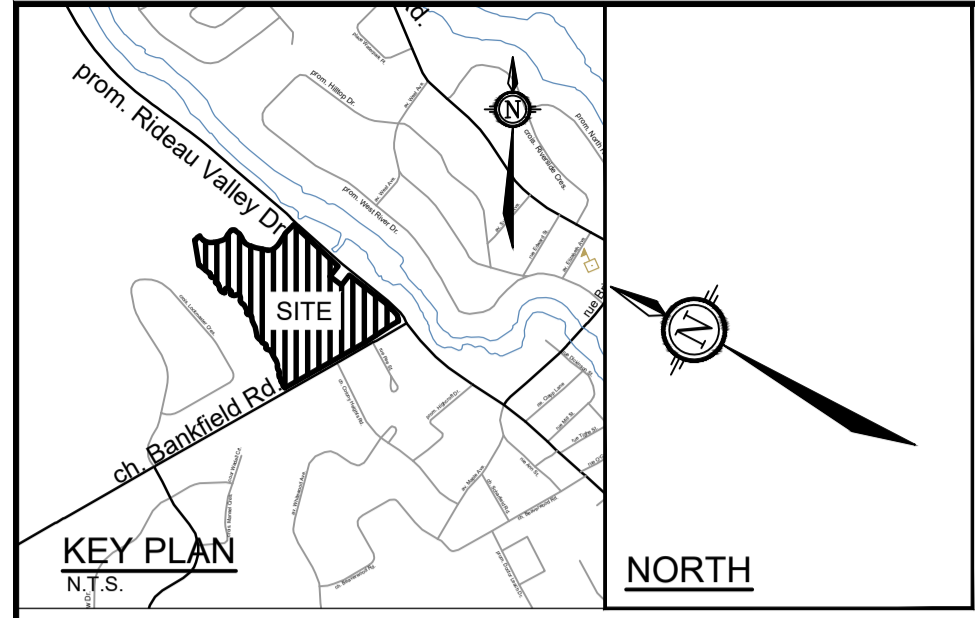
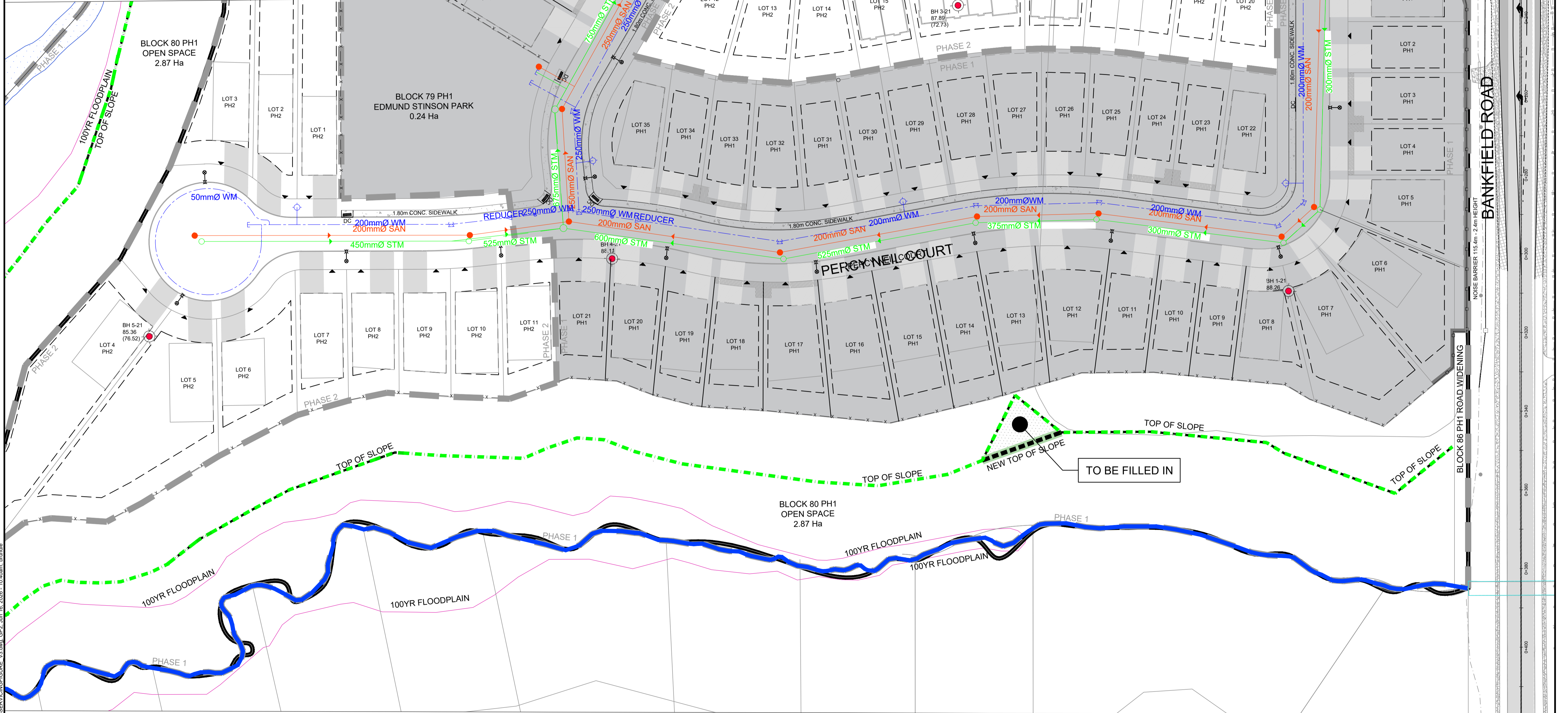


SEE DRAWING No. 121153-GP1



LEGEND

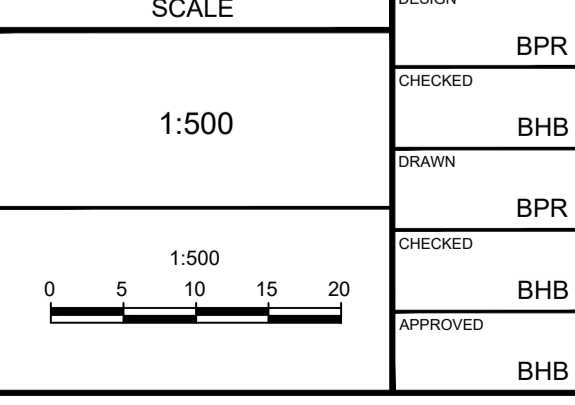
	EXISTING WATERMAIN		FLOODPLAIN
	PROPOSED WATERMAIN		Top of Slope (AOV, Matrix)
	PROPOSED HYDRANT		New Top of Slope (Novatech)
	EXISTING SANITARY SEWER		Existing Gravel Shoulder
	PROPOSED SANITARY SEWER		Existing Paved Shoulder
	PROPOSED STORM SEWER		Existing Ditch



NOTE:
THE POSITION OF ALL POLE LINES, CONDUITS, WATERMANS, SEWERS AND OTHER UNDERGROUND AND OVERGROUND UTILITIES AND STRUCTURES IS NOT NECESSARILY SHOWN ON THE CONTRACT DRAWINGS, AND WHERE SHOWN, THE ACCURACY OF THE POSITION OF SUCH UTILITIES AND STRUCTURES IS NOT GUARANTEED. BEFORE STARTING WORK, DETERMINE THE EXACT LOCATION OF ALL SUCH UTILITIES AND STRUCTURES AND ASSUME ALL LIABILITY FOR DAMAGE TO THEM.

No.	REVISION	DATE	BY
5.	ISSUED FOR PH 2 REVIEW	JUN 16/26	BHB
4.	ISSUED FOR RE-SUBMISSION REVIEW	MAR 3/25	BHB
3.	ISSUED FOR RE-SUBMISSION REVIEW	DEC 20/24	BHB
2.	ISSUED FOR RE-SUBMISSION REVIEW	APR 10/24	BHB
1.	ISSUED FOR REVIEW	JAN 6/23	BHB

SCALE	DESIGN	CHECKED	DRAWN	APPROVED
1:500	BPR	BHB	BPR	BHB



FOR REVIEW ONLY

PROFESSIONAL ENGINEER

 B. P. RUNDLE
 100527529
 Jun 24, 2026
 PROVINCE OF ONTARIO

NOVATECH
 Engineers, Planners & Landscape Architects
 Suite 200, 240 Michael Cowpland Drive
 Ottawa, Ontario, Canada K2M 1P6
 Telephone: (613) 254-9643
 Facsimile: (613) 254-5867
 Website: www.novatech-eng.com

LOCATION
 CITY OF OTTAWA
 STINSON LANDS SUBDIVISION

DRAWING NAME
CONCEPTUAL GENERAL PLAN OF SERVICES 2

PROJECT No. 121153-00
 REV 1 REV #5
 DRAWING No. 121153-GP2