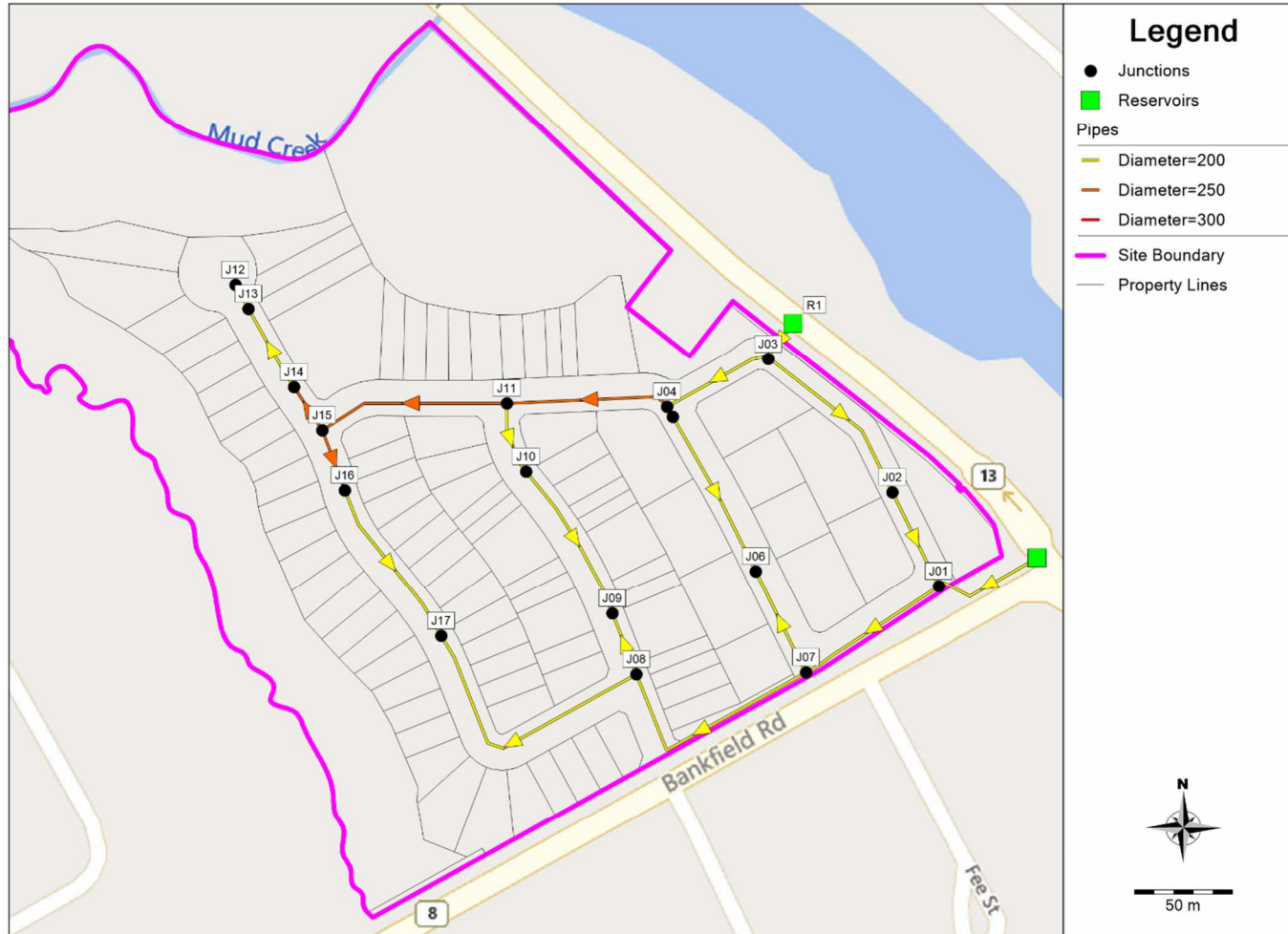


Stinson Lands (121153) – Ph1 + Ph2 PCSWMM Model Schematic

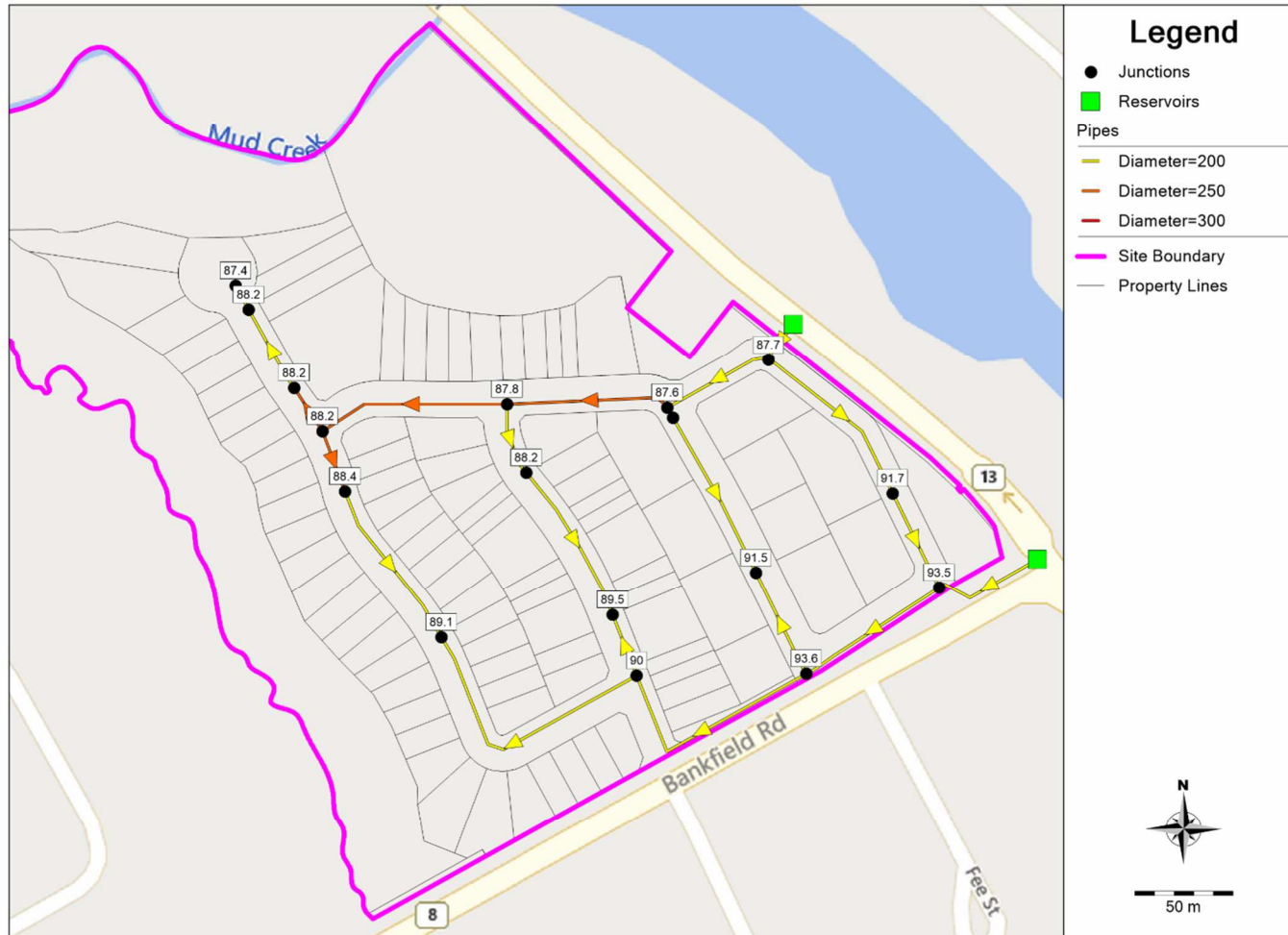


Proposed Watermain Sizing, Layout and Junction IDs

Date: 2024/12/19

M:\2021\121153\DATA\Calculations\Sewer Calcs\Water_PCSWMM\Images\Ph2\Model Schematics.docx

Stinson Lands (121153) – Ph1 + Ph2 PCSWMM Model Schematic

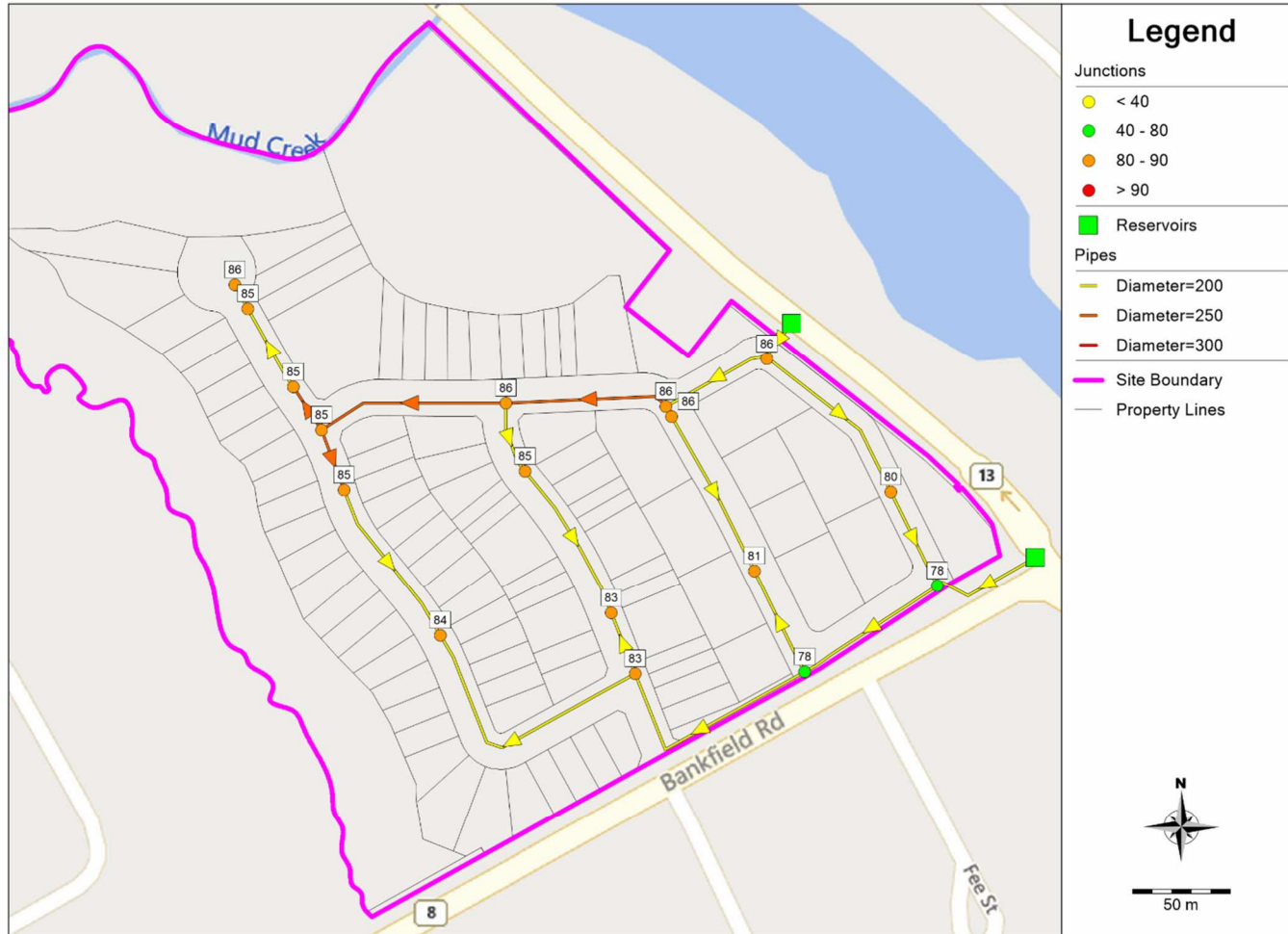


Ground Elevations (m)

Date: 2024/12/19

M:\2021\121153\DATA\Calculations\Sewer Calcs\Water_PCSWMM\Images\Ph2\Model Schematics.docx

Stinson Lands (121153) – Ph1 + Ph2 PCSWMM Model Schematic

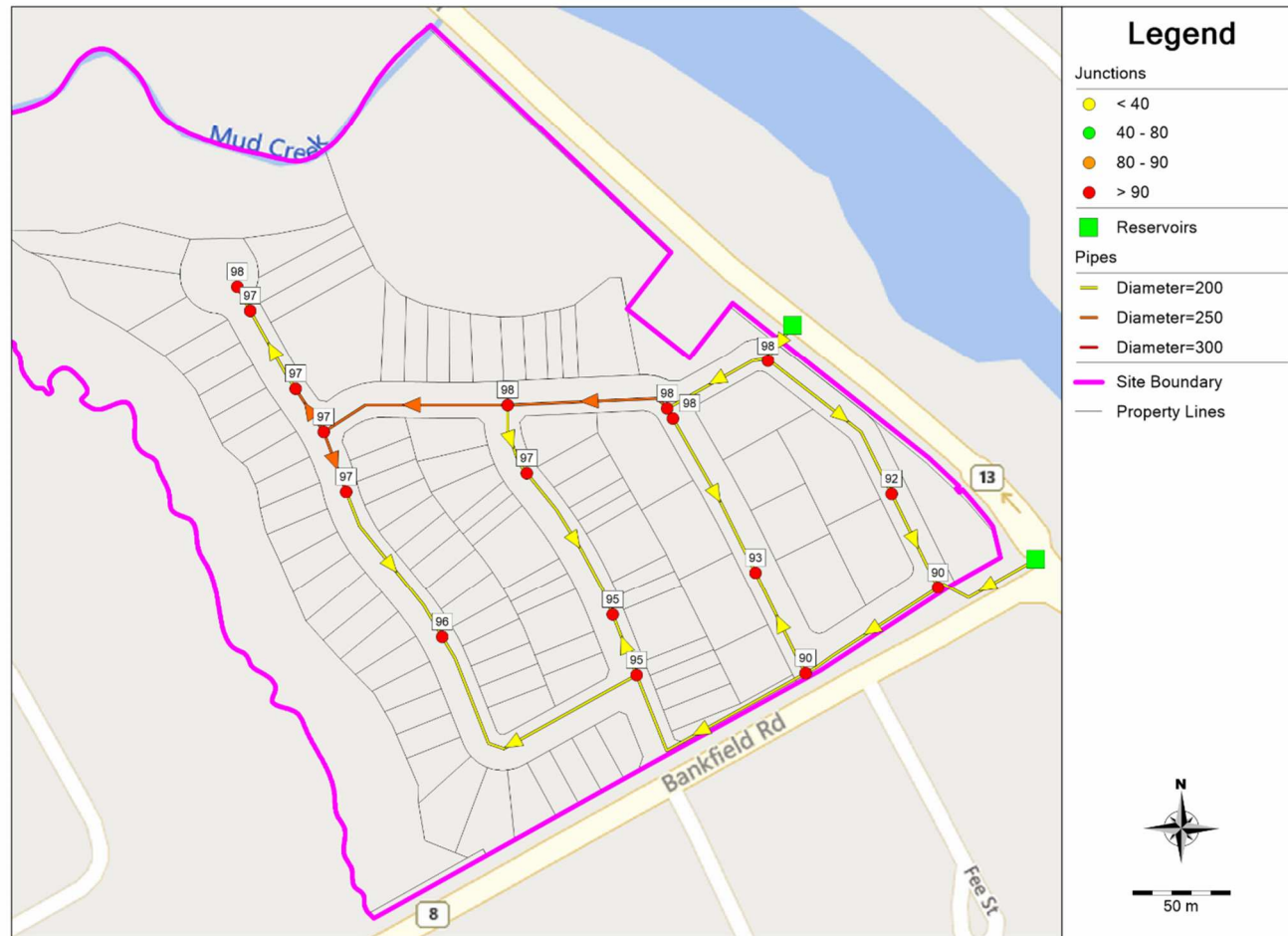


Maximum Pressure During AVDY Conditions – Future

Date: 2024/12/19

M:\2021\121153\DATA\Calculations\Sewer Calcs\Water_PCSWMM\Images\Ph2\Model Schematics.docx

Stinson Lands (121153) – Ph1 + Ph2 PCSWMM Model Schematic

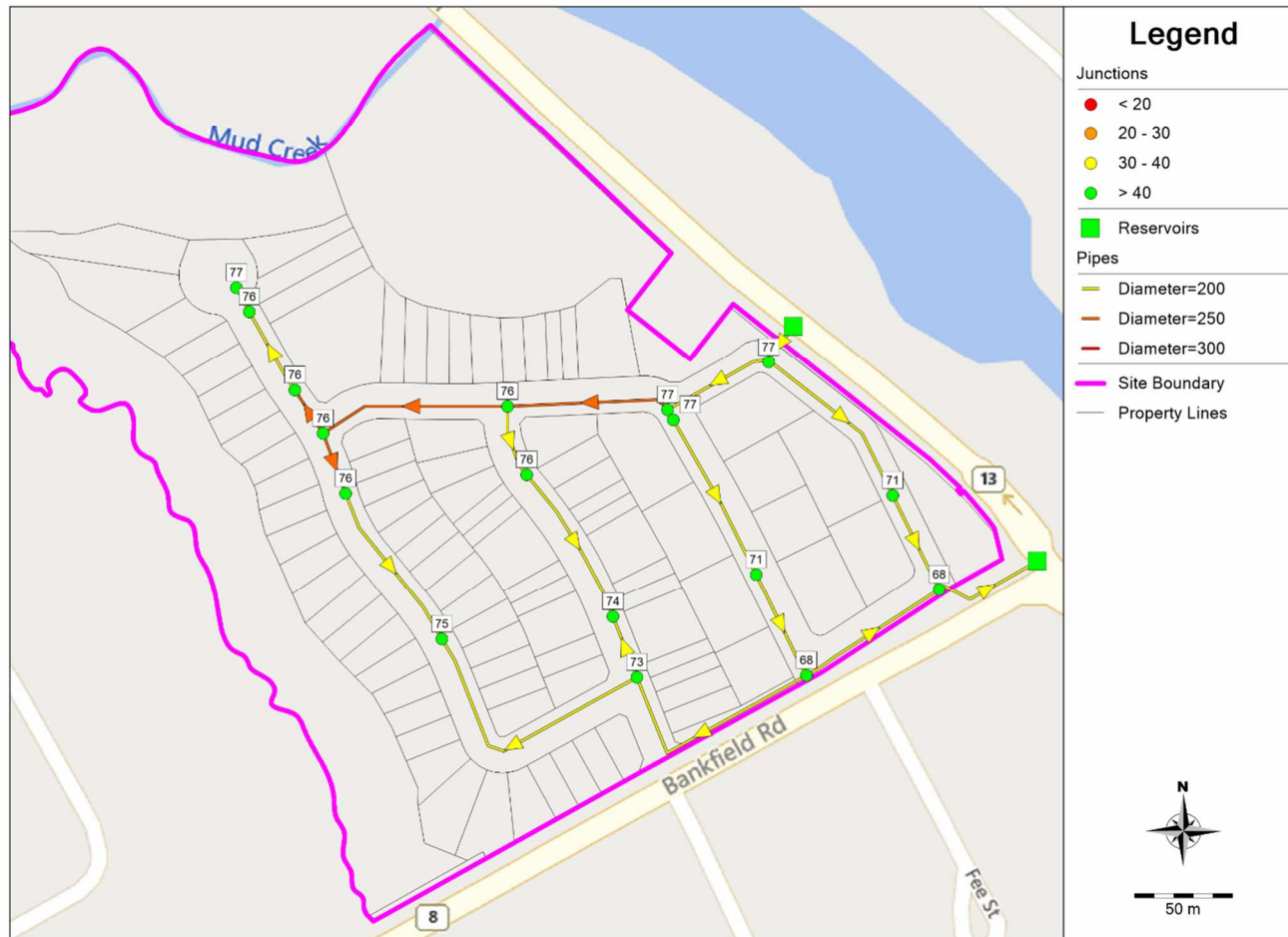


Maximum Pressure During AVDY Conditions – Existing

Date: 2024/12/19

M:\2021\121153\DATA\Calculations\Sewer Calcs\Water_PCSWMM\Images\Ph2\Model Schematics.docx

Stinson Lands (121153) – Ph1 + Ph2 PCSWMM Model Schematic

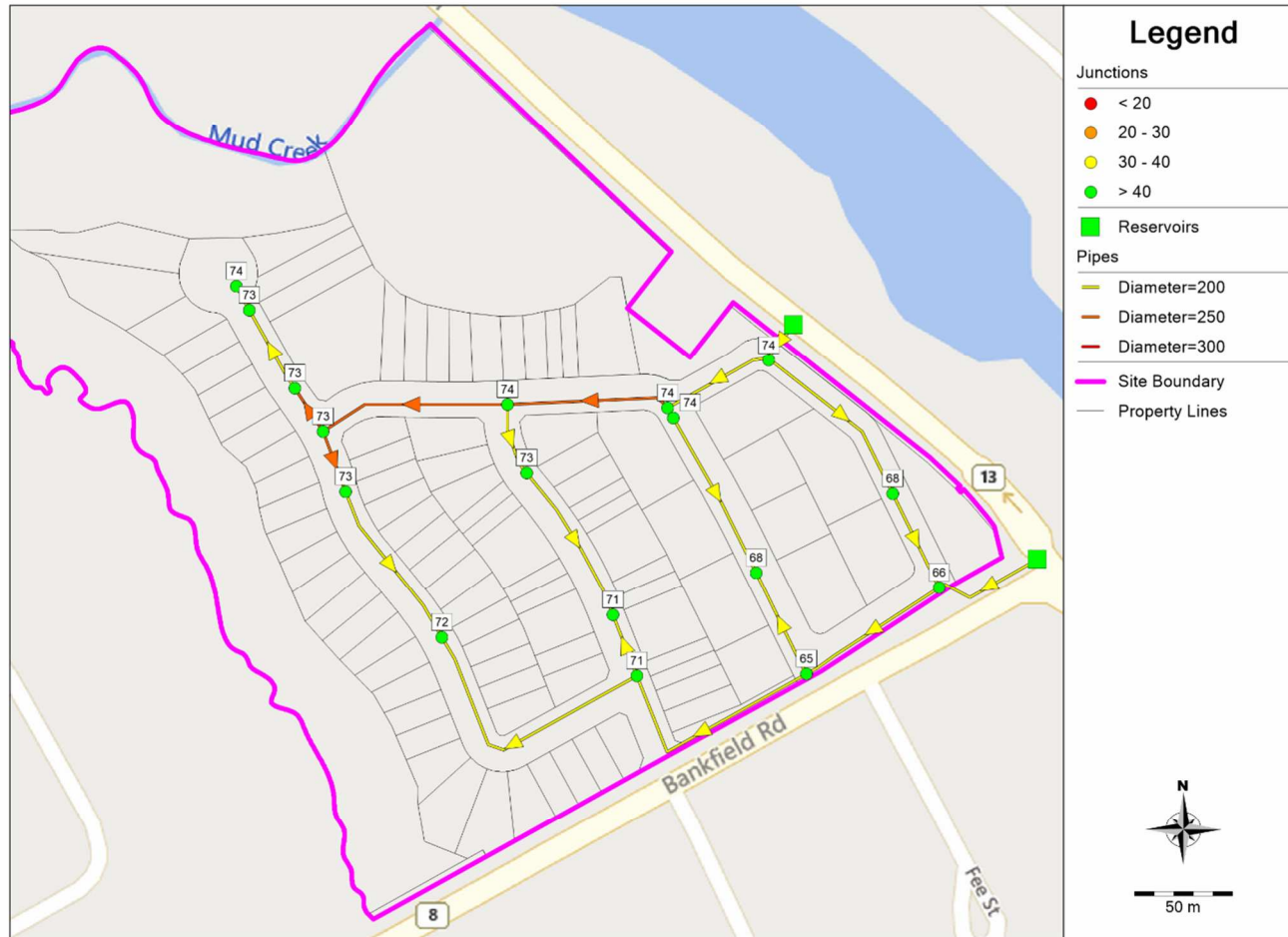


Minimum Pressure During PKHR Conditions – Future

Date: 2024/12/19

M:\2021\121153\DATA\Calculations\Sewer Calcs\Water_PCSWMM\Images\Ph2\Model Schematics.docx

Stinson Lands (121153) – Ph1 + Ph2 PCSWMM Model Schematic

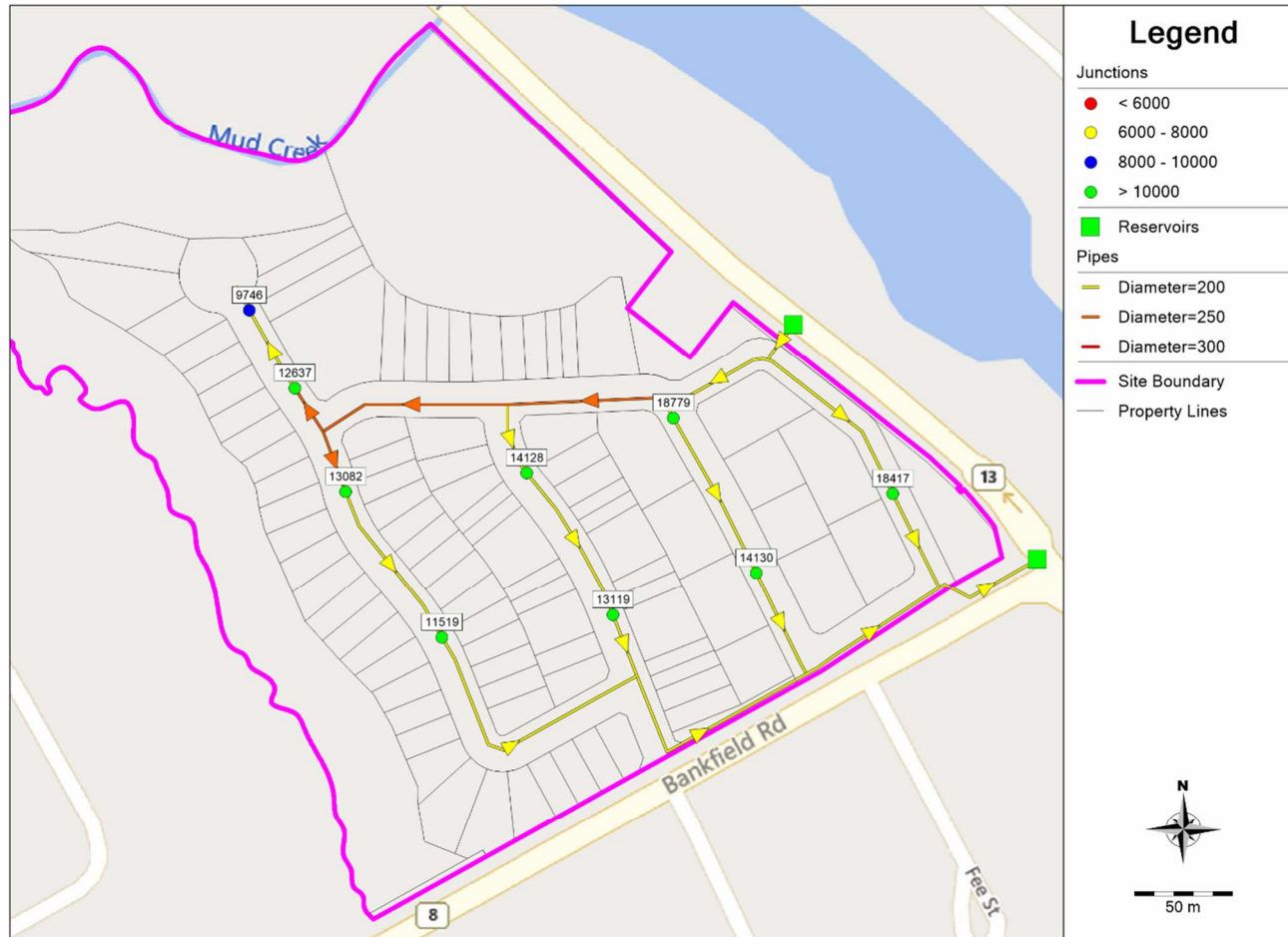


Minimum Pressure During PKHR Conditions – Existing

Date: 2024/12/19

M:\2021\121153\DATA\Calculations\Sewer Calcs\Water_PCSWMM\Images\Ph2\Model Schematics.docx

Stinson Lands (121153) – Ph1 + Ph2 PCSWMM Model Schematic

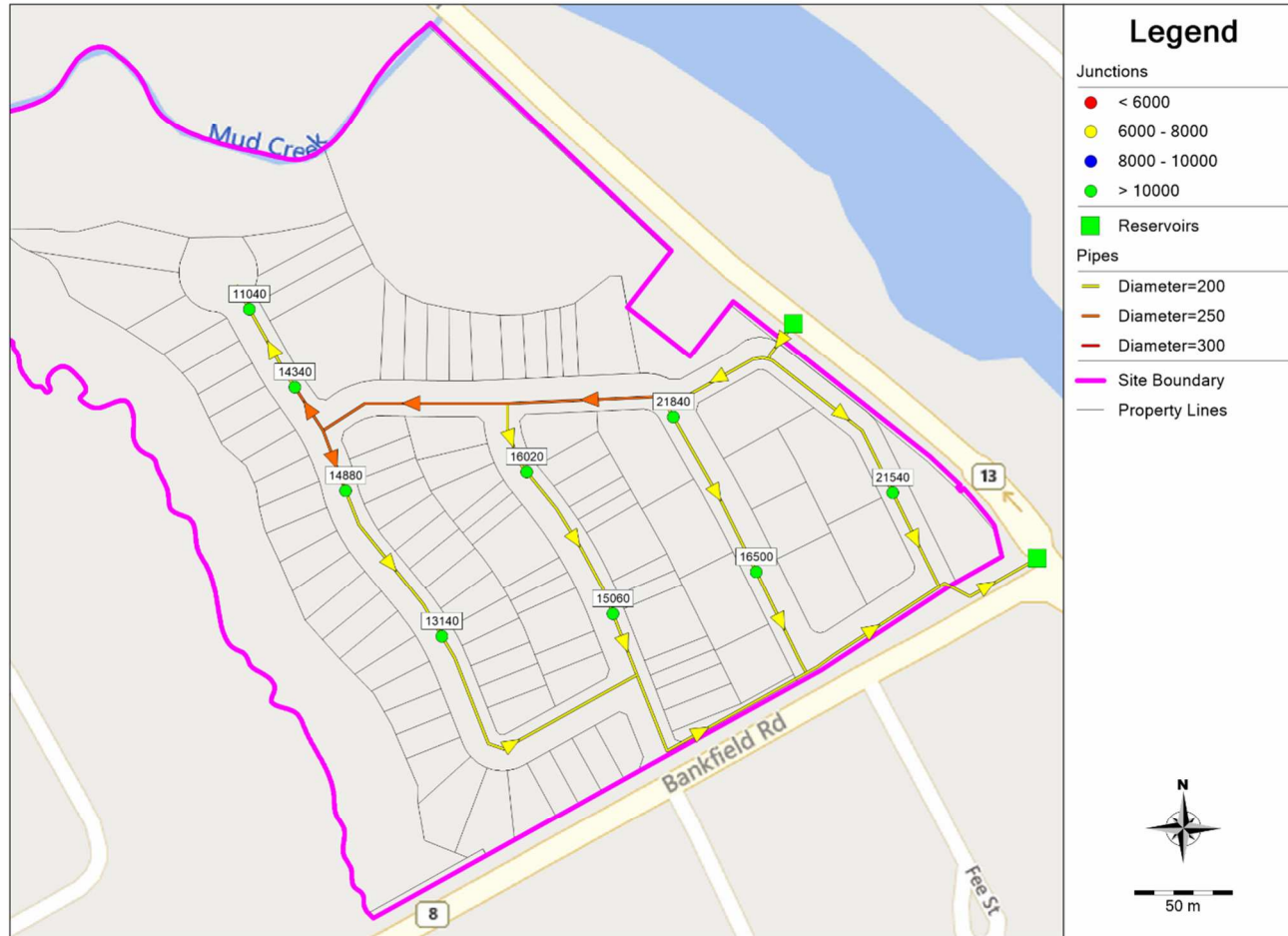


Available Flow at 20psi During MXDY+FF Conditions – Future

Date: 2024/12/19

M:\2021\121153\DATA\Calculations\Sewer Calcs\Water_PCSWMM\Images\Ph2\Model Schematics.docx

Stinson Lands (121153) – Ph1 + Ph2 PCSWMM Model Schematic



Available Flow at 20psi During MXDY+FF Conditions – Existing

Date: 2024/12/19

M:\2021\121153\DATA\Calculations\Sewer Calcs\Water_PCSWMM\Images\Ph2\Model Schematics.docx