

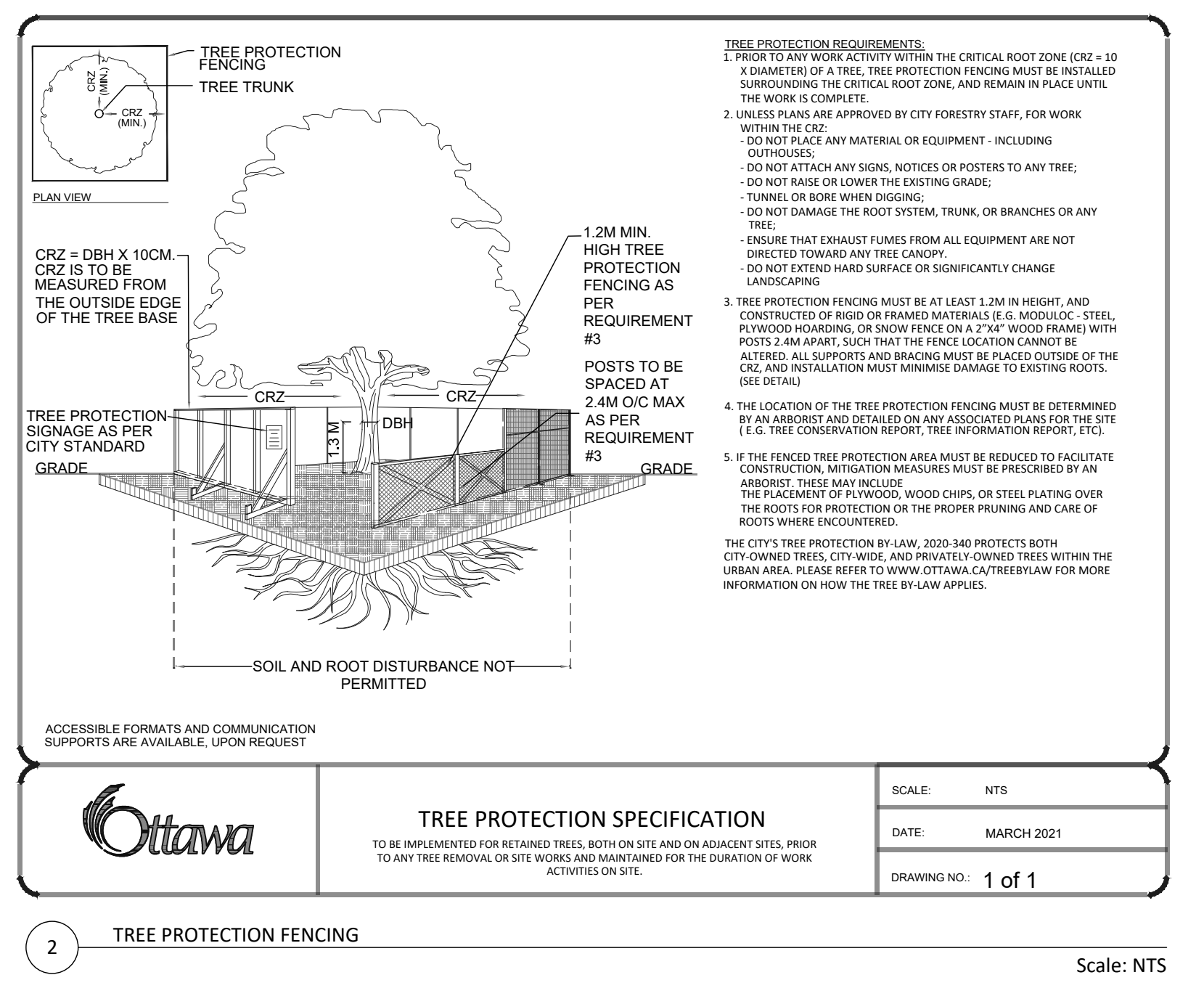


1 EXISTING VEGETATION Scale: 1:500

Tree #	Botanical Name	Common Name	DBH (cm)	Ownership	Condition	NOTE	To Be Preserved	Reason for Removal
1	Pinus nigra	Austrian Pine	50	City	Good	Asymmetrical canopy. Die back: 5% at canopy. Single stem	NO	Proposed site & ROW construction conflicts with tree location
2	Picea pungens	Colorado Spruce	40	Private 1101 Baxter	Good	Symmetrical canopy. Die back: 10% at canopy. Pruned limbs. Single stem	NO	Proposed site & ROW construction conflicts with tree location
3	Syringa Reticulata	Japanese Tree Lilac	25	Private 1101 Baxter	Good	Symmetrical canopy. Die back: 10% at canopy. Pruned limbs. Single stem. Included bark	NO	Proposed site construction conflicts with tree location
4	Picea glauca	White Spruce	20	Private 1101 Baxter	Good	Symmetrical canopy. Single stem. Has Christmas lights	NO	Proposed site construction conflicts with tree location
5	Tilia cordata	Littleleaf Linden	40	Private 1101 Baxter	Good	Asymmetrical canopy. Die back: 5% at branches. Pruned limbs. Single stem w/ 2 co-dominant leaders at 3m above grade. Included bark	NO	Proposed site construction conflicts with tree location
6	Tilia cordata	Littleleaf Linden	60	Private 1101 Baxter	Moderate	Asymmetrical canopy. Pruned limbs. Single stem w/ 2 co-dominant leaders at 2m above grade. Leaning. Included bark	NO	Proposed site construction conflicts with tree location
7	Tilia cordata	Littleleaf Linden	50	Private 1101 Baxter	Good	Asymmetrical canopy. Single stem. Bark rot at trunk	NO	Proposed site construction conflicts with tree location
8	Tilia cordata	Littleleaf Linden	70	Private 1101 Baxter	Good	Asymmetrical canopy. Die back: 10% at canopy. Pruned limbs. Single stem w/ 2 co-dominant leaders at 3m above grade	NO	Proposed site construction conflicts with tree location
9	Acer x Freemani	Freeman Maple	50	Private 1101 Baxter	Moderate	Symmetrical canopy. Die back: 10% at branches. Broken limbs. Single stem. Grided roots	NO	Proposed site construction conflicts with tree location
10	Acer x Freemani	Freeman Maple	45	Private 1101 Baxter	Moderate	Asymmetrical canopy. Die back: 15% at canopy. Broken limbs. Single stem	NO	Proposed site construction conflicts with tree location
11	Acer x Freemani	Freeman Maple	45	Private 1101 Baxter	Moderate	Symmetrical canopy. Die back: 10% at branches. Broken limbs. Single stem. Bark damage at trunk	NO	Proposed site construction conflicts with tree location
12	Picea glauca	White Spruce	30	Private 1101 Baxter	Good	Symmetrical canopy. Die back: 5% at branches. Pruned limbs. Single stem	NO	Proposed site construction conflicts with tree location
13	Picea pungens	Colorado Spruce	35	Private 1101 Baxter	Moderate	Symmetrical canopy. Pruned limbs. Single stem. Has Christmas lights. Heavy sap	NO	Proposed site construction conflicts with tree location
14	Picea pungens	Colorado Spruce	45	Private 1101 Baxter	Moderate	Symmetrical canopy. Pruned limbs. Single stem w/ 2 co-dominant leaders at 6m above grade. Leaning. Has Christmas lights	NO	Proposed site construction conflicts with tree location
15	Picea pungens	Colorado Spruce	45	Private 1101 Baxter	Good	Symmetrical canopy. Pruned limbs. Single stem. Has Christmas lights	NO	Proposed site construction conflicts with tree location
16	Pinus nigra	Austrian Pine	50	Private 1101 Baxter	Good	Asymmetrical canopy. Pruned limbs. Single stem. Has Christmas lights	NO	Proposed site construction conflicts with tree location
17	Pinus nigra	Austrian Pine	40	Private 1101 Baxter	Good	Symmetrical canopy. Pruned limbs. Single stem. Has Christmas lights	NO	Proposed site construction conflicts with tree location
18	Picea glauca	White Spruce	45	Private 1101 Baxter	Good	Symmetrical canopy. Die back: 10% at branches. Pruned limbs. Single stem. Bark rot at limbs. Grided roots	NO	Proposed site construction conflicts with tree location
19	Acer saccharinum	Silver Maple	50	Private 1101 Baxter	Good	Asymmetrical canopy. Pruned branches. Poor branch angle. Single stem	NO	Proposed site construction conflicts with tree location
20	Acer saccharinum	Silver Maple	40	Private 1101 Baxter	Good	Asymmetrical canopy. Pruned limbs. Single stem	NO	Proposed site construction conflicts with tree location
21	Pinus nigra	Austrian Pine	40	Private 1101 Baxter	Moderate	Symmetrical canopy. Die back: 20% at branches. Pruned limbs. Single stem	NO	Proposed site construction conflicts with tree location
22	Pinus nigra	Austrian Pine	45	Private 1101 Baxter	Good	Symmetrical canopy. Die back: 10% at branches. Pruned limbs. Single stem. Has Christmas lights	NO	Proposed site construction conflicts with tree location
23	Tilia cordata	Littleleaf Linden	40	Private 1101 Baxter	Good	Asymmetrical canopy. Pruned limbs. Single stem	NO	Proposed site construction conflicts with tree location
24	Acer saccharinum	Silver Maple	50	Private 1101 Baxter	Good	Asymmetrical canopy. Pruned limbs at O.H. utilities. Poor branch angle. Single stem. Leaning	NO	Proposed site construction conflicts with tree location
25	Fagus americana	American Beech	60	Private 1101 Baxter	Poor	Asymmetrical canopy. Pruned crown at O.H. utilities. Single stem	NO	Proposed site construction conflicts with tree location
26	Fagus americana	American Beech	40	Private 1101 Baxter	Moderate	Asymmetrical canopy. Pruned leader at O.H. utilities. Single stem	NO	Proposed site construction conflicts with tree location
27	Tilia americana	Basswood	65	Private 1101 Baxter	Good	Asymmetrical canopy. Pruned canopy at O.H. utilities. Poor branch angle. Single stem	YES	
28	Tilia americana	Basswood	60	Private 1101 Baxter	Good	Asymmetrical canopy. Pruned limbs. Single stem w/ 2 co-dominant leaders at 3m above grade. Bark rot at limbs	YES	
29	Tilia americana	Basswood	45	Private 1101 Baxter	Poor	Pruned leader at O.H. utilities. Single stem. Limbs over utility lines	NO	Proposed site construction conflicts with tree location
30	Acer platanoides	Norway Maple	30	Private 1101 Baxter	Moderate	Asymmetrical canopy. Die back: 20% at canopy. Pruned limbs. Single stem. Heat scorch	NO	Proposed site construction conflicts with tree location
31	Acer platanoides	Norway Maple	30	Private 1101 Baxter	Moderate	Symmetrical canopy. Die back: 10% at canopy. Pruned limbs. Single stem. Bark rot at cavities	NO	Proposed site construction conflicts with tree location
32	Tilia cordata	Littleleaf Linden	30	Private 1101 Baxter	Good	Asymmetrical canopy. Pruned branches. Single stem	YES	
33	Tilia cordata	Littleleaf Linden	30	Private 1101 Baxter	Good	Symmetrical canopy. Pruned branches. Single stem	YES	
34	Acer saccharinum	Silver Maple	25	Private 1101 Baxter	Poor	Asymmetrical canopy. Die back: 30% at canopy. Single stem. Chlorosis	NO	Proposed site construction conflicts with tree location
35	Pinus nigra	Austrian Pine	50	Private 1101 Baxter	Good	Asymmetrical canopy. Pruned limbs. Single stem	NO	Proposed site construction conflicts with tree location
36	Pinus nigra	Austrian Pine	40	Private 1101 Baxter	Good	Asymmetrical canopy. Pruned limbs. Single stem	NO	Proposed site construction conflicts with tree location
37	Pinus nigra	Austrian Pine	50	Private 1101 Baxter	Moderate	Asymmetrical canopy. Die back: 10% at branches. Poor branch union. Single stem w/ 2 co-dominant leaders at 4m above grade	NO	Proposed site construction conflicts with tree location
38	Acer platanoides	Norway Maple	15	Private 1101 Baxter	Moderate	Symmetrical canopy. Single stem. Included Bark. On a patio	NO	Proposed site construction conflicts with tree location
39	Malus spp.	Crabapple	2 x 25	Adjacent 1050 Baxter	Poor	Asymmetrical canopy. Die back: 15% at canopy. Single stem w/ 2 co-dominant leaders at 1m above grade. Heart rot at cavities	YES	

Tree #	Botanical Name	Common Name	DBH (cm)	Ownership	Condition	NOTE	To Be Preserved	Reason for Removal
40	Pinus nigra	Austrian Pine	50	Adjacent 1050 Baxter	Moderate	Symmetrical canopy. Pruned branches. Single stem	YES	
41	Pinus nigra	Austrian Pine	50	Adjacent 1050 Baxter	Moderate	Asymmetrical canopy. Broken limbs. Pruned limbs	YES	
42	Pinus nigra	Austrian Pine	40	Adjacent 1050 Baxter	Moderate	Asymmetrical canopy. Broken limbs. Pruned limbs. Single stem	YES	
43	Pinus nigra	Austrian Pine	50	Adjacent 1050 Baxter	Moderate	Asymmetrical canopy. Pruned limbs. Single stem	YES	
44	Pinus nigra	Austrian Pine	45	Adjacent 1050 Baxter	Good	Asymmetrical canopy. Broken limbs. Pruned limbs. Single stem	YES	
45	Pinus nigra	Austrian Pine	45	Adjacent 1050 Baxter	Poor	Asymmetrical canopy. Broken limbs. Pruned branches at O.H. utilities. Single stem. Pruned leader	YES	
46	Pinus nigra	Austrian Pine	45	Adjacent 1050 Baxter	Moderate	Asymmetrical canopy. Pruned leader at O.H. utilities. Single stem	YES	
47	Thuja occidentalis	Eastern White Cedar	10	Private 1101 Baxter	Moderate	Asymmetrical canopy. Single stem	NO	Proposed site construction conflicts with tree location
48	Tilia americana	Basswood	10	Adjacent 1050 Baxter	Poor	Asymmetrical canopy. Broken limbs. Poor branch angle. 4 multi-stem co-dominant leaders	YES	
49	Pinus strobus	White Pine	60	Adjacent 1050 Baxter	Good	Asymmetrical canopy. Broken limbs. Single stem	YES	
50	Acer negundo	Manitoba Maple	2 x 20	Private 1101 Baxter	Poor	Asymmetrical canopy. Single stem. Leaning. Grown into fence	NO	Poor condition
51	Pinus strobus	White Pine	50	Adjacent 2325 Dempsey	Good	Pruned limbs at O.H. utilities. Single stem	YES	
52	Acer platanoides	Norway Maple	15	Private 1101 Baxter	Poor	Asymmetrical canopy. Pruned at O.H. utilities. Single stem. Grown into chainlink fence	NO	Proposed site construction conflicts with tree location
53	Acer platanoides	Norway Maple	15	Private 1101 Baxter	Poor	Asymmetrical canopy. Pruned at O.H. utilities. Single stem. Grown into chainlink fence	NO	Proposed site construction conflicts with tree location
54	Acer platanoides	Norway Maple	15	Private 1101 Baxter	Poor	Asymmetrical canopy. Pruned at O.H. utilities. Single stem. Grown into chainlink fence	NO	Proposed site construction conflicts with tree location
55	Acer platanoides	Norway Maple	15	Private 1101 Baxter	Poor	Asymmetrical canopy. Pruned at O.H. utilities. Single stem. Grown into chainlink fence	NO	Proposed site construction conflicts with tree location
56	Acer negundo	Manitoba Maple	15	Private 1101 Baxter	Moderate	Asymmetrical canopy. Broken limbs. Single stem	NO	Proposed site construction conflicts with tree location
57	Acer platanoides	Norway Maple	15	Private 1101 Baxter	Poor	Asymmetrical canopy. Broken limbs. Pruned crown at O.H. utilities. Single stem. Bark rot at limbs	NO	Proposed site construction conflicts with tree location
58	Acer rubrum	Red Maple	65	Adjacent 2341 Dempsey	Good	Single stem w/ 4 co-dominant leaders at 3m above grade	YES	
59	Acer platanoides	Norway Maple	12	Private 1101 Baxter	Moderate	Asymmetrical canopy. Pruned at O.H. utilities. Single stem	YES	
60	Larix laricina	Tamarack	35	Adjacent 2345 Dempsey	Moderate	Asymmetrical canopy. Single stem	YES	
61	Acer platanoides	Norway Maple	20	Private 1101 Baxter	Moderate	Asymmetrical canopy. Pruned at O.H. utilities. Single stem. Grown into chainlink fence	YES	
62	Larix laricina	Tamarack	20	Private 1101 Baxter	Moderate	Asymmetrical canopy. Pruned at O.H. utilities. Single stem. Grown into chainlink fence	YES	
63	Larix laricina	Tamarack	20	Private 1101 Baxter	Moderate	Asymmetrical canopy. Pruned at O.H. utilities. Single stem. Grown into chainlink fence	YES	
64	Acer platanoides	Norway Maple	35	Adjacent 2325 Dempsey	Good	Pruned at O.H. utilities. Single stem	YES	
65	Acer platanoides	Norway Maple	35	Adjacent 2327 Dempsey	Good	Pruned at O.H. utilities. Single stem	YES	
66	Acer platanoides	Norway Maple	3 x 35	Adjacent 2325 Dempsey	Moderate	Pruned at O.H. utilities. Single stem w/ 3 co-dominant leaders at 1m above grade	YES	
67	Acer platanoides	Norway Maple	35	Adjacent 2327 Dempsey	Good	Pruned at O.H. utilities. Single stem	YES	
68	Tilia cordata	Littleleaf Linden	15	Private 1101 Baxter	Poor	Pruned limbs. Single stem. Grown into chainlink fence	YES	
69	Tilia cordata	Littleleaf Linden	15	Private 1101 Baxter	Poor	Pruned limbs. Single stem. Grown into chainlink fence	YES	
70	Pinus nigra	Austrian Pine	30	Boundary 1101/115 Baxter	Good	Symmetrical canopy. Single stem	YES	
71	Pinus nigra	Austrian Pine	25	Private	Moderate	Die back: 15% at branches. Pruned limbs. Single stem	YES	

- TREE PRESERVATION / REMOVAL NOTES:**
- TREES IDENTIFIED FOR RETENTION ARE IN POOR TO GOOD CONDITION AND CAN BE REASONABLY PROTECTED FROM CONSTRUCTION ACTIVITIES, GIVEN ADEQUATE TREE PROTECTION MEASURES AS DESCRIBED ARE TAKEN.
 - NATURAL ELEMENTS:
 - NO VALUED WOODLOTS DESIGNATED AS URBAN NATURAL FEATURES OR NO NATURAL ENVIRONMENT AREAS PER THE URBAN NATURAL AREAS ENVIRONMENTAL EVALUATION STUDY (UNAES), ARE FOUND ON THE SUBJECT SITE.
 - NO SIGNIFICANT WOODLANDS ARE FOUND ON THE SUBJECT SITE.
 - NO HIGH QUALITY SPECIMEN TREES ARE FOUND ON THE SUBJECT SITE.
 - NO HAZARDOUS TREES ARE FOUND ON THE SUBJECT SITE.
 - NO RIPARIAN WOODLOTS, BARE COMMUNITIES, OR OTHER UNIQUE ECOLOGICAL FEATURES ARE FOUND ON THE SUBJECT SITE.
 - NO TREE SPECIES AT RISK AND THEIR HABITAT IS FOUND ON THE SUBJECT SITE.
 - THERE ARE NO OTHER APPLICATIONS AFFECTING THE LAND UPON WHICH TREES ARE TO BE PROTECTED, INJURED OR DESTROYED.
 - MITIGATION MEASURES FOR PROTECTION OF PRESERVED VEGETATION:
 - TREE PROTECTION FENCING WILL PROVIDE ADEQUATE PROTECTION TO PRESERVED TREES BY PHYSICALLY SEPARATING A TREE'S CRZ AND CANOPY FROM CONSTRUCTION ACTIVITIES.
 - USE OF HYDRO VAC TECHNOLOGIES AND HAND PRUNING SHALL BE USED TO ENSURE A CLEAN INTERFACE FOR PROPER ROOT PRUNING BY A QUALIFIED ARBORIST (ISA CERTIFIED)
 - A QUALIFIED ARBORIST (ISA CERTIFIED) OR OTHER TREE PROFESSIONAL AS APPROVED BY THE CITY OF OTTAWA MUST PRUNE ROOTS OR BRANCHES THAT EXTEND BEYOND PRESCRIBED TREE PROTECTION ZONE AS REQUIRED. ALL PRUNING OF TREE ROOTS AND BRANCHES MUST BE IN ACCORDANCE WITH GOOD ARBORICULTURAL STANDARDS.
 - TREES SHALL BE INSPECTED BY THE LANDSCAPE ARCHITECT OR CITY FORESTER REGULARLY FOR DAMAGE INCURRED DURING CONSTRUCTION TO ENSURE APPROPRIATE PRUNING OR OTHER MEASURES ARE IMPLEMENTED.
 - THE AREAS WITHIN THE TREE PROTECTION ZONE MUST REMAIN UNDISTURBED AT ALL TIMES. NO WORK OR MATERIAL STORAGE IS PERMITTED WITHIN THE TREE PROTECTION ZONE.
 - TREES THAT HAVE DIED OR HAVE BEEN DAMAGED BEYOND REPAIR WILL BE REMOVED AND REPLACED WITH TREES OF AN EQUIVALENT SIZE AND SPECIES AS APPROVED BY THE LANDSCAPE ARCHITECT OR CITY OF OTTAWA.
 - TREE PROTECTION FENCE MUST NOT BE REMOVED WITHOUT THE WRITTEN AUTHORIZATION OF THE LANDSCAPE ARCHITECT.
 - ALL DISTURBED AREAS TO BE RESTORED TO FINISHED CONDITION WITH 150mm TOPSOIL AND SOD OR SEED AS INDICATED.
 - ALL NECESSARY CLEARING AND GRUBBING SHALL BE COMPLETED BY THE CONTRACTOR. REVIEW REMOVAL WITH LANDSCAPE ARCHITECT AND THE CITY OF OTTAWA PRIOR TO ANY TREE CUTTING.
 - IF CUTTING OF ROOTS OR CHANGING OF GRADES AROUND EXISTING TREES IS SPECIFIED, FOLLOW APPROPRIATE DETAILS AS DIRECTED BY LANDSCAPE ARCHITECT.
 - INSTALL TREE PROTECTION FENCE TO SATISFACTION OF THE LANDSCAPE ARCHITECT. TREE PROTECTION SHALL REMAIN UNTIL SUBSTANTIAL PERFORMANCE OF THE PROJECT OR UPON WRITTEN AUTHORIZATION FROM THE LANDSCAPE ARCHITECT.
 - INSTALLATION OF TREE PROTECTION FENCE SHALL BE LOCATED AT THE CRITICAL ROOT ZONE. CRITICAL ROOT ZONE: 100mm x DIAMETER AT BREAST HEIGHT (DBH) EXAMPLE: DBH = 30cm; CRZ = 300cm / 3.0m
 - THE FOLLOWING TREE PROTECTION MEASURES WILL BE PROVIDED TO ENSURE THE PRESERVATION OF THE TREES IDENTIFIED IN THE DETAILED TREE PLANTING AND CONSERVATION PLAN TO THE SATISFACTION OF FORESTRY SERVICES:
 - EQUIPMENT SHALL NOT BE ALLOWED TO OPERATE, PARK, BE REPAIRED OR REFUELED; NOR SHALL CONSTRUCTION MATERIALS BE STORED OR ANY EARTH MATERIALS BE STOCKPILED; WITHIN THE TREE PROTECTION FENCE OR WITHIN THE CRITICAL ROOT ZONE OF ANY TREE. WASTE OR VOLATILE



TREE PROTECTION SPECIFICATION

1.2M MIN. HIGH TREE PROTECTION FENCING AS PER REQUIREMENT #3

2.4M O.C. MAX. ALL PER REQUIREMENT #3

SCALE: NTS

DATE: MARCH 2021

DRAWING NO: 1 of 1

Contractor shall check all dimensions on the work and report any discrepancy to the Landscape Architect before proceeding. All drawings and specifications are the property of the Landscape Architect and must be returned at the completion of the work. This drawing is not to be used for construction until signed by the Landscape Architect.

Key Plan

Owner:

REGIONAL

REGIONAL GROUP
 ADDRESS: 1737 WOODWARD DRIVE, 2ND FLOOR
 K2C 0P9
 TELEPHONE: (613) 230-2100
 EMAIL: info@regionalgroup.com

Contract Implementing TCR: Schedule of Proposed Works:
 N/A T.B.D

- LEGEND**
- PROPERTY LINE
 - EXISTING TREES
 - CRITICAL ROOT ZONE
 - TREE IDENTIFICATION NUMBER

No.	Description	Date
1	Issued for First Submission	Dec 22/25

Revision

City Approval Stamp

ASSOCIATION OF LANDSCAPE ARCHITECTS

MEMBER

OTAWA

MAJORINO

SCALE: NTS

DATE: MARCH 2021

DRAWING NO: 1 of 1

ARBORIST: PAT GAUVREAU
 ISA CERTIFICATION NUMBER: ON-3138A

NAK design strategies

1285 WELLINGTON STREET, OTTAWA, ON K1Y 3A8 CANADA
 T 613.237.2345

Project

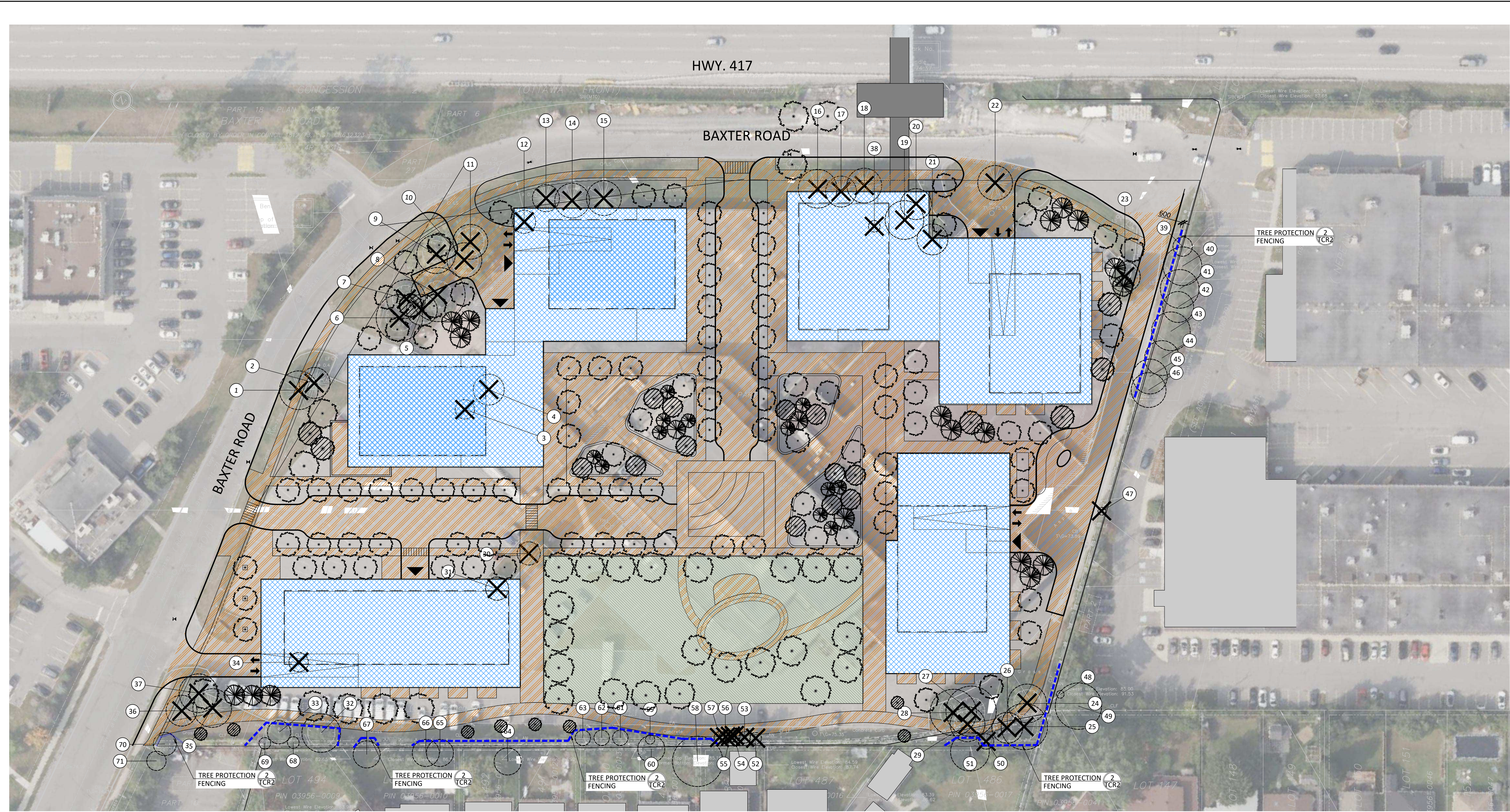
1101 BAXTER ROAD
 1101 Baxter Rd, Ottawa, ON K2C 3R4

Title

TREE CONSERVATION REPORT

Date	OCT.2025	Sheet	
Scale	1:500		
Drawn	MB		
Checked	PG		
Job No.	25-193		

TCR 1



1 EXISTING VEGETATION Scale: 1:500

TREE PRESERVATION / REMOVAL NOTES:

- TREES IDENTIFIED FOR RETENTION ARE IN POOR TO GOOD CONDITION AND CAN BE REASONABLY PROTECTED FROM CONSTRUCTION ACTIVITIES, GIVEN ADEQUATE TREE PROTECTION MEASURES AS DESCRIBED ARE TAKEN.
- NATURAL ELEMENTS:
 - NO VALUED WOODLOTS DESIGNATED AS URBAN NATURAL FEATURES OR NO NATURAL ENVIRONMENT AREAS PER THE URBAN NATURAL AREAS ENVIRONMENTAL EVALUATION STUDY (UNAES), ARE FOUND ON THE SUBJECT SITE.
 - NO SIGNIFICANT WOODLANDS ARE FOUND ON THE SUBJECT SITE.
 - NO HIGH QUALITY, SPECIMEN TREES ARE FOUND ON THE SUBJECT SITE.
 - NO HAZARDOUS TREES ARE FOUND ON THE SUBJECT SITE.
 - NO RIPARIAN WOODLOTS, BARE COMMUNITIES, OR OTHER UNIQUE ECOLOGICAL FEATURES ARE FOUND ON THE SUBJECT SITE.
 - NO TREE SPECIES AT RISK AND THEIR HABITAT IS FOUND ON THE SUBJECT SITE.
- THERE ARE NO OTHER APPLICATIONS AFFECTING THE LAND UPON WHICH TREES ARE TO BE PROTECTED, INJURED OR DESTROYED.
- MITIGATION MEASURES FOR PROTECTION OF PRESERVED VEGETATION:
 - TREE PROTECTION FENCING WILL PROVIDE ADEQUATE PROTECTION TO PRESERVED TREES BY PHYSICALLY SEPARATING A TREE'S CRZ AND CANOPY FROM CONSTRUCTION ACTIVITIES.
 - USE OF HYDRO VAC TECHNOLOGIES AND HAND PRUNING SHALL BE USED TO ENSURE A CLEAN INTERFACE FOR PROPER ROOT PRUNING BY A QUALIFIED ARBORIST (ISA CERTIFIED).
 - A QUALIFIED ARBORIST (ISA CERTIFIED) OR OTHER TREE PROFESSIONAL AS APPROVED BY THE CITY OF OTTAWA MUST PRUNE ROOTS OR BRANCHES THAT EXTEND BEYOND PRESCRIBED TREE PROTECTION ZONE AS REQUIRED. ALL PRUNING OF TREE ROOTS AND BRANCHES MUST BE IN ACCORDANCE WITH GOOD ARBORICULTURAL STANDARDS.
 - TREES SHALL BE INSPECTED BY THE LANDSCAPE ARCHITECT OR CITY FORESTER REGULARLY FOR DAMAGE INCURRED DURING CONSTRUCTION TO ENSURE APPROPRIATE PRUNING OR OTHER MEASURES ARE IMPLEMENTED.
 - THE AREAS WITHIN THE TREE PROTECTION ZONE MUST REMAIN UNDISTURBED AT ALL TIMES. NO WORK OR MATERIAL STORAGE IS PERMITTED WITHIN THE TREE PROTECTION ZONE.
 - TREES THAT HAVE DIED OR HAVE BEEN DAMAGED BEYOND REPAIR WILL BE REMOVED AND REPLACED WITH TREES OF AN EQUIVALENT SIZE AND SPECIES AS APPROVED BY THE LANDSCAPE ARCHITECT OR CITY OF OTTAWA.
 - TREE PROTECTION FENCE MUST NOT BE REMOVED WITHOUT THE WRITTEN AUTHORIZATION OF THE LANDSCAPE ARCHITECT.
 - ALL DISTURBED AREAS TO BE RESTORED TO FINISHED CONDITION WITH 150mm TOPSOIL AND SOD OR SEED AS INDICATED.
 - ALL NECESSARY CLEARING AND GRUBBING SHALL BE COMPLETED BY THE CONTRACTOR. REVIEW REMOVAL WITH LANDSCAPE ARCHITECT AND THE CITY OF OTTAWA PRIOR TO ANY TREE CUTTING.
 - IF CUTTING OF ROOTS OR CHANGING OF GRADES AROUND EXISTING TREES IS SPECIFIED, FOLLOW APPROPRIATE DETAILS AS DIRECTED BY LANDSCAPE ARCHITECT.
 - INSTALL TREE PROTECTION FENCE TO SATISFACTION OF THE LANDSCAPE ARCHITECT. TREE PROTECTION SHALL REMAIN UNTIL SUBSTANTIAL PERFORMANCE OF THE PROJECT OR UPON WRITTEN AUTHORIZATION FROM THE LANDSCAPE ARCHITECT.
 - INSTALLATION OF TREE PROTECTION FENCE SHALL BE LOCATED AT THE CRITICAL ROOT ZONE. CRITICAL ROOT ZONE: 100mm x DIAMETER AT BREAST HEIGHT (DBH) EXAMPLE: DBH = 30cm; CRZ = 300cm / 3.0m
 - THE FOLLOWING TREE PROTECTION MEASURES WILL BE PROVIDED TO ENSURE THE PRESERVATION OF THE TREES IDENTIFIED IN THE DETAILED TREE PLANTING AND CONSERVATION PLAN TO THE SATISFACTION OF FORESTRY SERVICES.
 - EQUIPMENT SHALL NOT BE ALLOWED TO OPERATE, PARK, BE REPAIRED OR REFUELED; NOR SHALL CONSTRUCTION MATERIALS BE STORED OR ANY EARTH MATERIALS BE STOCKPILED; WITHIN THE TREE PROTECTION FENCE OR WITHIN THE CRITICAL ROOT ZONE OF ANY TREE. WASTE OR VOLATILE

TREE PLANTING RECOMMENDATIONS:

- THE USE OF NATIVE, NON-INVASIVE TREE SPECIES ARE RECOMMENDED. FOR EXAMPLE, BUT NOT LIMITED TO, SPECIES SUCH AS ACER RUBRUM, AESCULUS GLABRA, AMELANCHIER LAEVIS, CELTIS OCCIDENTALIS, GYMNOCLADUS DIOICUS, QUERCUS MACROCARPA, QUERCUS RUBRA.
- GUIDELINES FOR TREE PLANTING IN SENSITIVE MARINE CLAY SOILS SHALL BE FOLLOWED IF APPLICABLE TO THE SITE.

Contractor shall check all dimensions on the work and report any discrepancy to the Landscape Architect before proceeding. All drawings and specifications are the property of the Landscape Architect and must be returned at the completion of the work. This drawing is not to be used for construction until signed by the Landscape Architect.



REGIONAL GROUP
 1737 WOODWARD DRIVE, 2ND FLOOR
 K2C 0P9
 TELEPHONE: (613) 230-2100
 EMAIL: info@regionalgroup.com

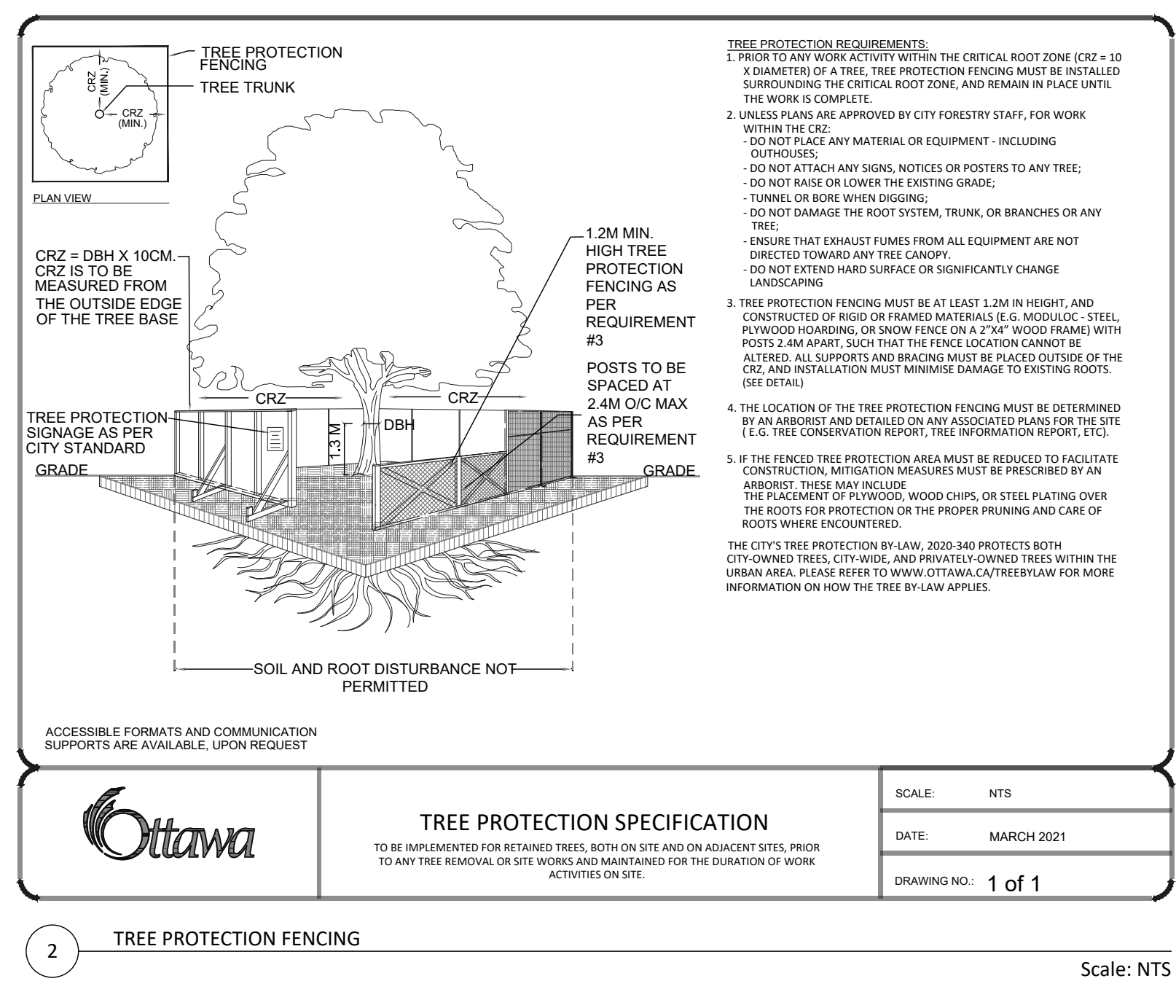
Contractor Implementing TCR: Schedule of Proposed Works:
 T.B.D T.B.D

LEGEND

	PROPERTY LINE
	EXISTING TREES
	CRITICAL ROOT ZONE
	TREE IDENTIFICATION NUMBER
	PROPOSED BUILDING
	HARD SURFACING
	PROPOSED PARK
	TREE PROTECTION FENCE
	PROPOSED LARGE DECIDUOUS TREE
	PROPOSED MEDIUM DECIDUOUS TREE
	PROPOSED SMALL DECIDUOUS TREE
	PROPOSED CONIFEROUS TREE

Tree #	Botanical Name	Common Name	DBH (cm)	Ownership	Condition	NOTE	To Be Preserved	Reason for Removal
1	Pinus nigra	Austrian Pine	50	City	Good	Asymmetrical canopy. Die back: 5% at canopy, Single stem	NO	Proposed site & ROW construction conflicts with tree location
2	Picea pungens	Colorado Spruce	40	Private 1101 Baxter	Good	Symmetrical canopy. Die back: 5% at branches, Pruned limbs, Single stem	NO	Proposed site & ROW construction conflicts with tree location
3	Syringa reticulata	Japanese Tree Lilac	25	Private 1101 Baxter	Good	Symmetrical canopy. Die back: 10% at canopy, Pruned limbs, Single stem, Included bark	NO	Proposed site construction conflicts with tree location
4	Picea glauca	White Spruce	20	Private 1101 Baxter	Good	Symmetrical canopy. Single stem, Has Christmas lights	NO	Proposed site construction conflicts with tree location
5	Tilia cordata	Littleleaf Linden	40	Private 1101 Baxter	Good	Asymmetrical canopy. Die back: 5% at branches, Pruned limbs, Single stem w/ 2 co-dominant leaders at 3m above grade, Included bark	NO	Proposed site construction conflicts with tree location
6	Tilia cordata	Littleleaf Linden	60	Private 1101 Baxter	Moderate	Asymmetrical canopy. Pruned limbs, Single stem w/ 2 co-dominant leaders at 2m above grade, Leaning, Included bark	NO	Proposed site construction conflicts with tree location
7	Tilia cordata	Littleleaf Linden	70	Private 1101 Baxter	Good	Asymmetrical canopy. Single stem, Bark rot at trunk	NO	Proposed site construction conflicts with tree location
8	Tilia cordata	Littleleaf Linden	50	Private 1101 Baxter	Good	Asymmetrical canopy. Die back: 10% at canopy, Pruned limbs, Single stem w/ 2 co-dominant leaders at 3m above grade	NO	Proposed site construction conflicts with tree location
9	Acer x Freemanii	Freeman Maple	50	Private 1101 Baxter	Moderate	Symmetrical canopy. Die back: 10% at branches, Broken limbs, Single stem, Grided roots	NO	Proposed site construction conflicts with tree location
10	Acer x Freemanii	Freeman Maple	45	Private 1101 Baxter	Moderate	Asymmetrical canopy. Die back: 15% at canopy, Broken limbs, Single stem	NO	Proposed site construction conflicts with tree location
11	Acer x Freemanii	Freeman Maple	45	Private 1101 Baxter	Moderate	Symmetrical canopy. Die back: 10% at branches, Broken limbs, Single stem, Bark damage at trunk	NO	Proposed site construction conflicts with tree location
12	Picea glauca	White Spruce	30	Private 1101 Baxter	Good	Symmetrical canopy. Die back: 5% at branches, Pruned limbs, Single stem	NO	Proposed site construction conflicts with tree location
13	Picea pungens	Colorado Spruce	35	Private 1101 Baxter	Moderate	Symmetrical canopy. Pruned limbs, Single stem, Has Christmas lights, Heavy sap	NO	Proposed site construction conflicts with tree location
14	Picea pungens	Colorado Spruce	45	Private 1101 Baxter	Moderate	Symmetrical canopy. Pruned limbs, Single stem w/ 2 co-dominant leaders at 6m above grade, Leaning, Has Christmas lights	NO	Proposed site construction conflicts with tree location
15	Picea pungens	Colorado Spruce	45	Private 1101 Baxter	Good	Symmetrical canopy. Pruned limbs, Single stem, Has Christmas lights	NO	Proposed site construction conflicts with tree location
16	Pinus nigra	Austrian Pine	50	Private 1101 Baxter	Good	Asymmetrical canopy. Pruned limbs, Single stem, Has Christmas lights	NO	Proposed site construction conflicts with tree location
17	Pinus nigra	Austrian Pine	40	Private 1101 Baxter	Good	Symmetrical canopy. Pruned limbs, Single stem, Has Christmas lights	NO	Proposed site construction conflicts with tree location
18	Picea glauca	White Spruce	45	Private 1101 Baxter	Good	Symmetrical canopy. Die back: 10% at branches, Pruned limbs, Single stem, Bark rot at limbs, Grided roots	NO	Proposed site construction conflicts with tree location
19	Acer saccharinum	Silver Maple	50	Private 1101 Baxter	Good	Asymmetrical canopy. Pruned branches, Poor branch angle, Single stem	NO	Proposed site construction conflicts with tree location
20	Acer saccharinum	Silver Maple	40	Private 1101 Baxter	Good	Asymmetrical canopy. Pruned limbs, Single stem	NO	Proposed site construction conflicts with tree location
21	Pinus nigra	Austrian Pine	40	Private 1101 Baxter	Moderate	Symmetrical canopy. Die back: 20% at branches, Pruned limbs, Single stem	NO	Proposed site construction conflicts with tree location
22	Pinus nigra	Austrian Pine	45	Private 1101 Baxter	Good	Symmetrical canopy. Die back: 10% at branches, Pruned limbs, Single stem, Has Christmas lights	NO	Proposed site construction conflicts with tree location
23	Tilia cordata	Littleleaf Linden	40	Private 1101 Baxter	Good	Asymmetrical canopy. Pruned limbs, Single stem	NO	Proposed site construction conflicts with tree location
24	Acer saccharinum	Silver Maple	50	Private 1101 Baxter	Good	Asymmetrical canopy. Pruned limbs at O.H. utilities, Poor branch angle, Single stem, Leaning	NO	Proposed site construction conflicts with tree location
25	Fagus americana	American Beech	40	Private 1101 Baxter	Poor	Asymmetrical canopy. Pruned crown at O.H. utilities, Single stem	NO	Proposed site construction conflicts with tree location
26	Fagus americana	American Beech	40	Private 1101 Baxter	Moderate	Asymmetrical canopy. Pruned leader at O.H. utilities, Single stem	NO	Proposed site construction conflicts with tree location
27	Tilia americana	Basswood	65	Private 1101 Baxter	Good	Asymmetrical canopy. Pruned canopy at O.H. utilities, Poor branch angle, Single stem	YES	
28	Tilia americana	Basswood	60	Private 1101 Baxter	Good	Asymmetrical canopy. Pruned limbs, Single stem w/ 2 co-dominant leaders at 3m above grade, Bark rot at limbs	YES	
29	Tilia americana	Basswood	40	Private 1101 Baxter	Poor	Pruned leader at O.H. utilities, Single stem, Limbs over utility lines	NO	Proposed site construction conflicts with tree location
30	Acer platanoides	Norway Maple	30	Private 1101 Baxter	Moderate	Asymmetrical canopy. Die back: 20% at canopy, Pruned limbs, Single stem, Heat scorch	NO	Proposed site construction conflicts with tree location
31	Acer platanoides	Norway Maple	30	Private 1101 Baxter	Moderate	Symmetrical canopy. Die back: 10% at canopy, Pruned limbs, Single stem, Bark rot at cavities	NO	Proposed site construction conflicts with tree location
32	Tilia cordata	Littleleaf Linden	30	Private 1101 Baxter	Good	Asymmetrical canopy. Pruned branches, Single stem	YES	
33	Tilia cordata	Littleleaf Linden	30	Private 1101 Baxter	Good	Symmetrical canopy. Pruned branches, Single stem	YES	
34	Acer saccharinum	Silver Maple	25	Private 1101 Baxter	Poor	Asymmetrical canopy. Die back: 30% at canopy, Single stem, Chlorosis	NO	Proposed site construction conflicts with tree location
35	Pinus nigra	Austrian Pine	50	Private 1101 Baxter	Good	Asymmetrical canopy. Pruned limbs, Single stem	NO	Proposed site construction conflicts with tree location
36	Pinus nigra	Austrian Pine	40	Private 1101 Baxter	Good	Asymmetrical canopy. Pruned limbs, Single stem	NO	Proposed site construction conflicts with tree location
37	Pinus nigra	Austrian Pine	50	Private 1101 Baxter	Moderate	Asymmetrical canopy. Die back: 10% at branches, Poor branch union, Single stem w/ 2 co-dominant leaders at 4m above grade	NO	Proposed site construction conflicts with tree location
38	Acer platanoides	Norway Maple	15	Private 1101 Baxter	Moderate	Symmetrical canopy. Single stem, Included bark, On a patio	NO	Proposed site construction conflicts with tree location
39	Malus spp.	Crabapple	2 x 25	Adjacent 1050 Baxter	Poor	Asymmetrical canopy. Die back: 15% at canopy, Single stem w/ 2 co-dominant leaders at 1m above grade, Heart rot at cavities	YES	

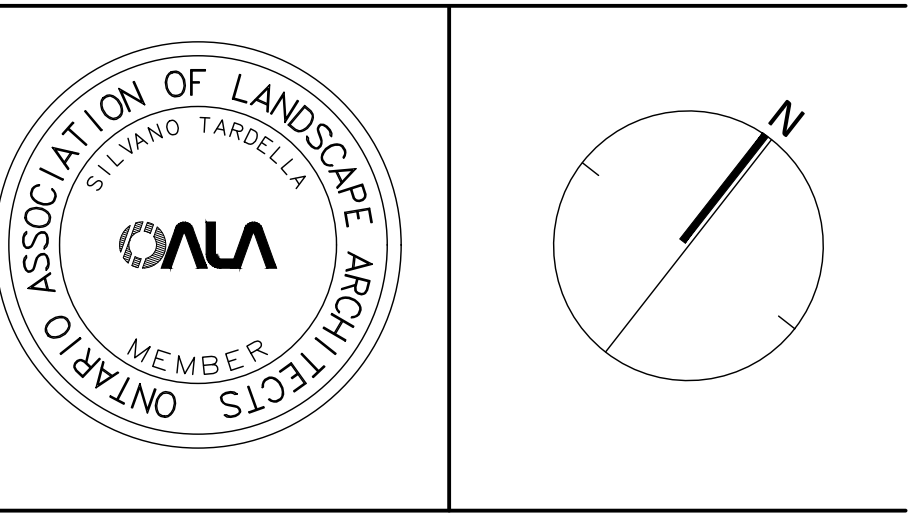
Tree #	Botanical Name	Common Name	DBH (cm)	Ownership	Condition	NOTE	To Be Preserved	Reason for Removal
40	Pinus nigra	Austrian Pine	50	Adjacent 1050 Baxter	Moderate	Symmetrical canopy. Pruned branches, Single stem	YES	
41	Pinus nigra	Austrian Pine	50	Adjacent 1050 Baxter	Moderate	Asymmetrical canopy. Broken limbs, Pruned limbs	YES	
42	Pinus nigra	Austrian Pine	40	Adjacent 1050 Baxter	Moderate	Asymmetrical canopy. Broken limbs, Pruned limbs, Single stem	YES	
43	Pinus nigra	Austrian Pine	50	Adjacent 1050 Baxter	Moderate	Asymmetrical canopy. Pruned limbs, Single stem	YES	
44	Pinus nigra	Austrian Pine	45	Adjacent 1050 Baxter	Good	Asymmetrical canopy. Broken limbs, Pruned limbs, Single stem	YES	
45	Pinus nigra	Austrian Pine	45	Adjacent 1050 Baxter	Poor	Asymmetrical canopy. Broken limbs, Pruned branches at O.H. utilities, Single stem	YES	
46	Pinus nigra	Austrian Pine	45	Adjacent 1050 Baxter	Moderate	Asymmetrical canopy. Pruned leader at O.H. utilities, Single stem	YES	
47	Thuja occidentalis	Eastern White Cedar	10	Private 1101 Baxter	Moderate	Asymmetrical canopy. Single stem	NO	Proposed site construction conflicts with tree location
48	Tilia americana	Basswood	10	Adjacent 1050 Baxter	Poor	Asymmetrical canopy. Broken limbs, Poor branch angle, 4 multi-stem co-dominant leaders	YES	
49	Pinus strobus	White Pine	60	Adjacent 1050 Baxter	Good	Asymmetrical canopy. Broken limbs, Single stem	YES	
50	Acer negundo	Manitoba Maple	2 x 20	Private 1101 Baxter	Poor	Asymmetrical canopy. Single stem, Leaning, Grown into fence	NO	Poor condition
51	Pinus strobus	White Pine	50	Adjacent 2320 Dempsey	Good	Pruned limbs at O.H. utilities, Single stem	YES	
52	Acer platanoides	Norway Maple	15	Private 1101 Baxter	Poor	Asymmetrical canopy. Pruned at O.H. utilities, Single stem, Grown into chainlink fence	NO	Proposed site construction conflicts with tree location
53	Acer platanoides	Norway Maple	15	Private 1101 Baxter	Poor	Asymmetrical canopy. Pruned at O.H. utilities, Single stem, Grown into chainlink fence	NO	Proposed site construction conflicts with tree location
54	Acer platanoides	Norway Maple	15	Private 1101 Baxter	Poor	Asymmetrical canopy. Pruned at O.H. utilities, Single stem, Grown into chainlink fence	NO	Proposed site construction conflicts with tree location
55	Acer platanoides	Norway Maple	15	Private 1101 Baxter	Poor	Asymmetrical canopy. Pruned at O.H. utilities, Single stem, Grown into chainlink fence	NO	Proposed site construction conflicts with tree location
56	Acer negundo	Manitoba Maple	15	Private 1101 Baxter	Moderate	Asymmetrical canopy. Broken limbs, Single stem	NO	Proposed site construction conflicts with tree location
57	Acer platanoides	Norway Maple	15	Private 1101 Baxter	Poor	Asymmetrical canopy. Broken limbs, Pruned crown at O.H. utilities, Single stem, Bark rot at limbs	NO	Proposed site construction conflicts with tree location
58	Acer rubrum	Red Maple	65	Adjacent 2341 Dempsey	Good	Single stem w/ 4 co-dominant leaders at 3m above grade	YES	
59	Acer platanoides	Norway Maple	12	Private 1101 Baxter	Moderate	Asymmetrical canopy. Pruned at O.H. utilities, Single stem	YES	
60	Larix laricina	Tamarack	35	Adjacent 2345 Dempsey	Moderate	Asymmetrical canopy. Single stem	YES	
61	Acer platanoides	Norway Maple	20	Private 1101 Baxter	Moderate	Asymmetrical canopy. Pruned at O.H. utilities, Single stem, Grown into chainlink fence	YES	
62	Larix laricina	Tamarack	20	Private 1101 Baxter	Moderate	Asymmetrical canopy. Pruned at O.H. utilities, Single stem, Grown into chainlink fence	YES	
63	Larix laricina	Tamarack	20	Private 1101 Baxter	Moderate	Asymmetrical canopy. Pruned at O.H. utilities, Single stem, Grown into chainlink fence	YES	
64	Acer platanoides	Norway Maple	35	Adjacent 2357 Dempsey	Good	Pruned at O.H. utilities, Single stem	YES	
65	Acer platanoides	Norway Maple	35	Adjacent 2357 Dempsey	Good	Pruned at O.H. utilities, Single stem	YES	
66	Acer platanoides	Norway Maple	3 x 35	Adjacent 2357 Dempsey	Moderate	Pruned at O.H. utilities, Single stem w/ 3 co-dominant leaders at 1m above grade	YES	
67	Acer platanoides	Norway Maple	35	Adjacent 2357 Dempsey	Good	Pruned at O.H. utilities, Single stem	YES	
68	Tilia cordata	Littleleaf Linden	15	Private 1101 Baxter	Poor	Pruned limbs, Single stem, Grown into chainlink fence	YES	
69	Tilia cordata	Littleleaf Linden	15	Private 1101 Baxter	Poor	Pruned limbs, Single stem, Grown into chainlink fence	YES	
70	Pinus nigra	Austrian Pine	30	Boundary 1101/119 Baxter	Good	Symmetrical canopy, Single stem	YES	
71	Pinus nigra	Austrian Pine	25	Private	Moderate	Die back 15% at branches, Pruned limbs, Single stem	YES	



2 TREE PROTECTION FENCING Scale: NTS

1	Issued for First Submission	Dec 22/25
No.	Description	Date

Revision
 City Approval Stamp



ARBORIST: PAT GAUVREAU
 ISA CERTIFICATION NUMBER: ON-3138A



1285 WELLINGTON STREET, OTTAWA, ON K1Y 3A8 CANADA
 T 613.237.2345

1101 BAXTER ROAD
 1101 Baxter Rd, Ottawa, ON K2C 3R4

Title
 TREE CONSERVATION REPORT

Date	OCT.2025	Sheet	TCR 2
Scale	1:500	Checked	PG
Drawn	MB	Job No.	25-193