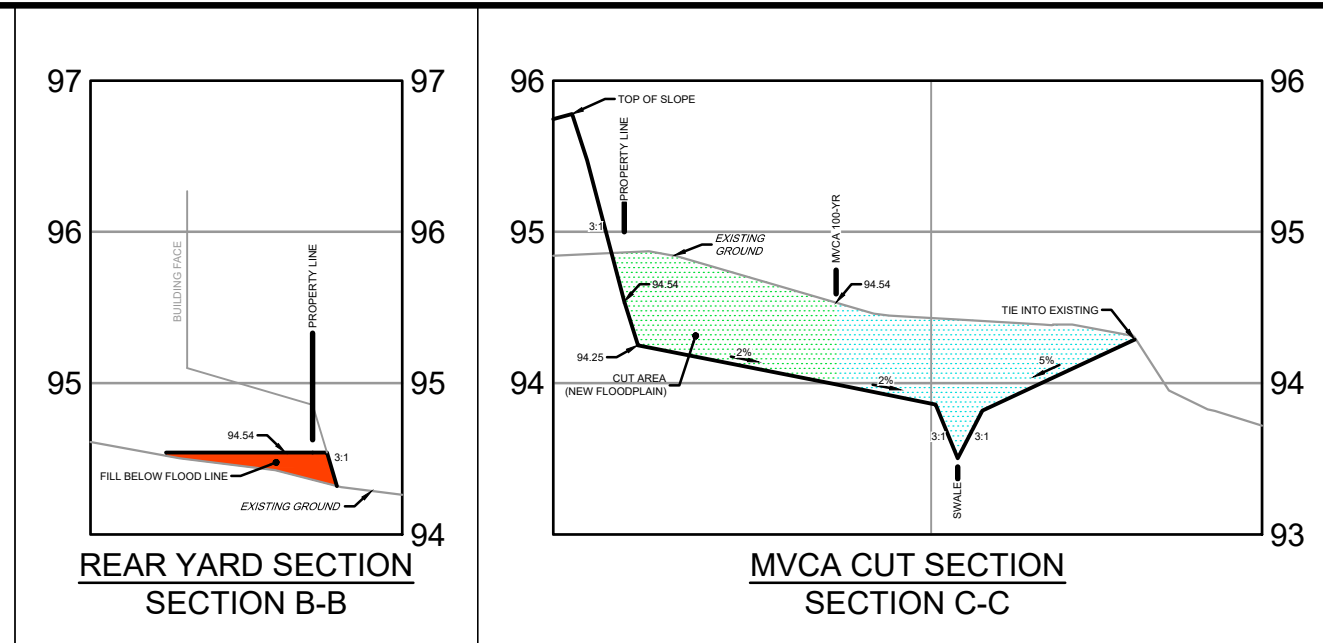
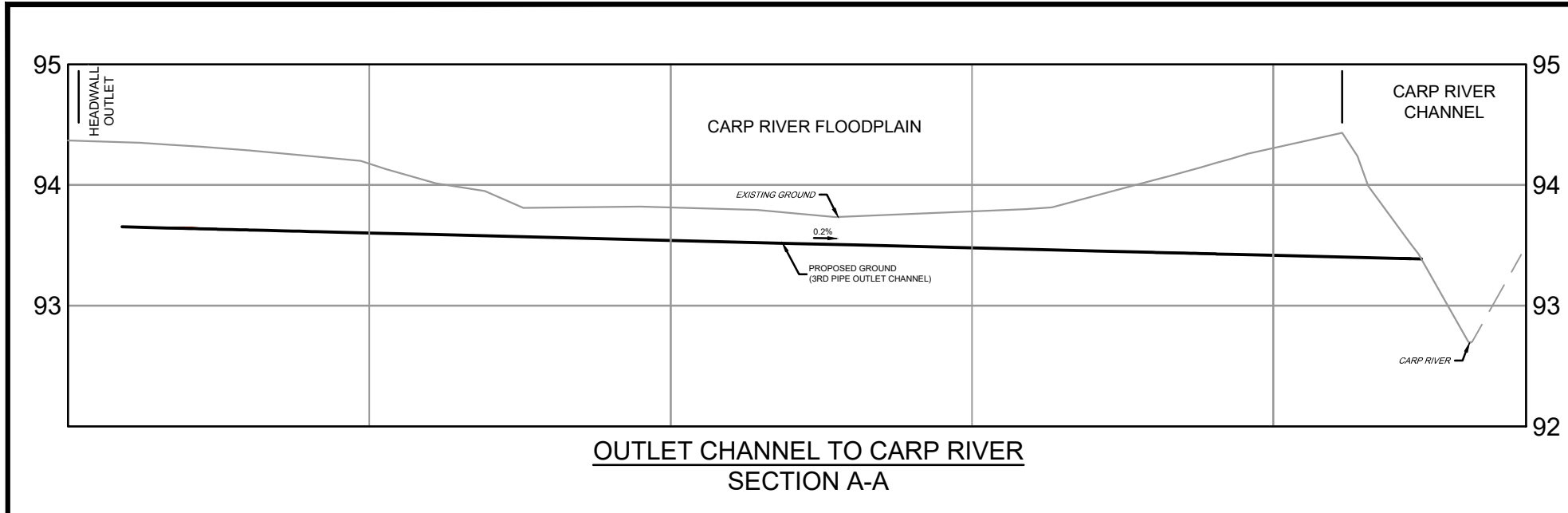


LEGEND

- FILL 94.54 - 94.29
- FILL 94.29 - 94.04
- CUT 94.54 - 94.04
- CUT WITHIN 100-YR



Fill Volumes

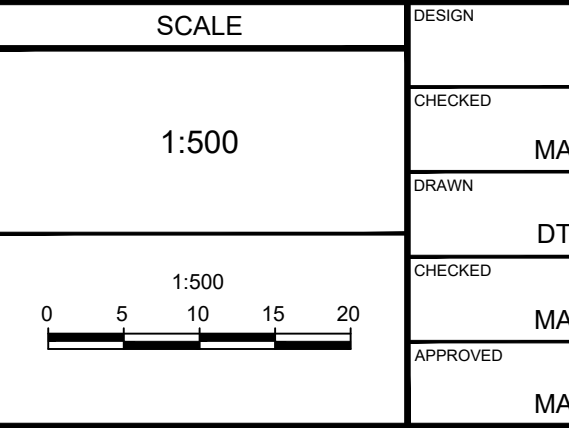
Elevation Range	Depth Below 100-YR Floodline (94.54)	Fill Volume (m³)
94.54 - 94.29	0.00 - 0.25	160.0
94.29 - 94.04	-0.25 - 0.50	16.7
Total Fill		176.7

Cut Volumes

Elevation Range	Depth Below 100-YR Floodline (94.54)	Cut Volume (m³)
94.54 - 94.29	0.00 - 0.25	311.2
94.29 - 94.04	-0.25 - 0.50	335.6
Total Cut		646.8

NOTE:
 THE POSITION OF ALL POLE LINES, CONDUITS, WATERMANS, SEWERS AND OTHER UNDERGROUND AND OVERGROUND UTILITIES AND STRUCTURES IS NOT NECESSARILY SHOWN ON THE CONTRACT DRAWINGS, AND WHERE SHOWN, THE ACCURACY OF THE POSITION OF SUCH UTILITIES AND STRUCTURES IS NOT GUARANTEED. BEFORE STARTING WORK, DETERMINE THE EXACT LOCATION OF ALL SUCH UTILITIES AND STRUCTURES AND ASSUME ALL LIABILITY FOR DAMAGE TO THEM.

No.	REVISION	DATE	BY
1.	DP COMMENT RESOLUTION	JAN 2026	MAB
2.	MVCA CUT FILL APPLICATION	JAN 2026	MAB
3.	REVISED MVCA CUT FILL APPLICATION	APR 13/26	MAB
4.	DP COMMENT RESOLUTION	MAY 22/26	MAB
	UNDER DESIGN	JUN 2/26	



FOR REVIEW ONLY

DESIGN: MAB
 CHECKED: DTD
 DRAWN: MAB
 APPROVED: MAB

L.R. WILSON
 10180055
 PROVINCE OF ONTARIO

M.A. BISSETT
 PROVINCE OF ONTARIO

NOVATECH
 Engineers, Planners & Landscape Architects
 Suite 200, 240 Michael Cowpland Drive
 Ottawa, Ontario, Canada K2M 1P6
 Telephone: (613) 254-9643
 Facsimile: (613) 254-5867
 Website: www.novatech-eng.com

CITY OF OTTAWA
 560 HAZELDEAN ROAD - DOUBLE DECK SUBDIVISION

CUT / FILL AREA PLAN

PROJECT No: 100057-05
 REV: 4
 DRAWING No: 100057-CFA

C:\Users\10007\Documents\CAD\100057-CFA.dwg, P:\ANS-B1 - Jun 02 2026 - 2:20pm, employee