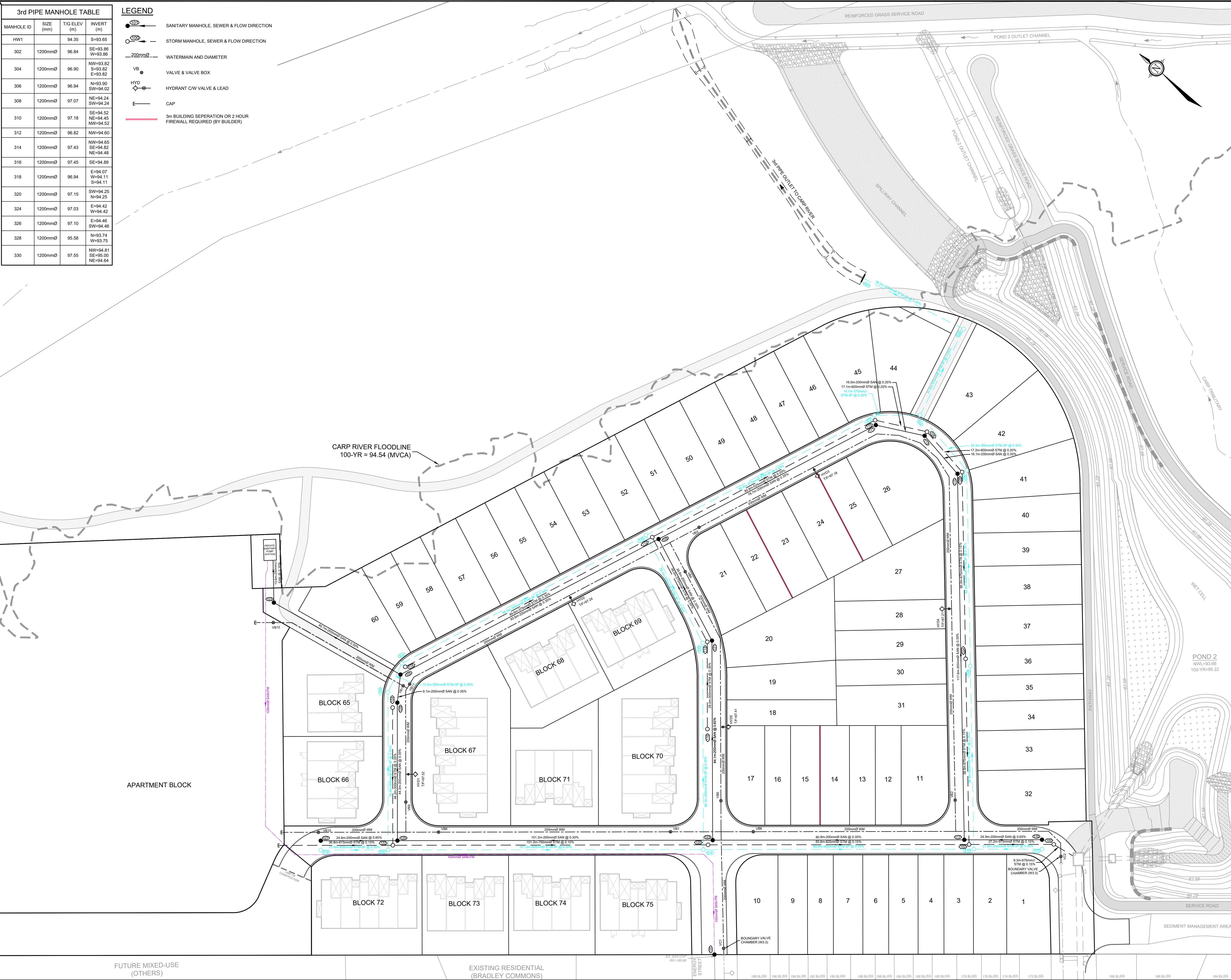
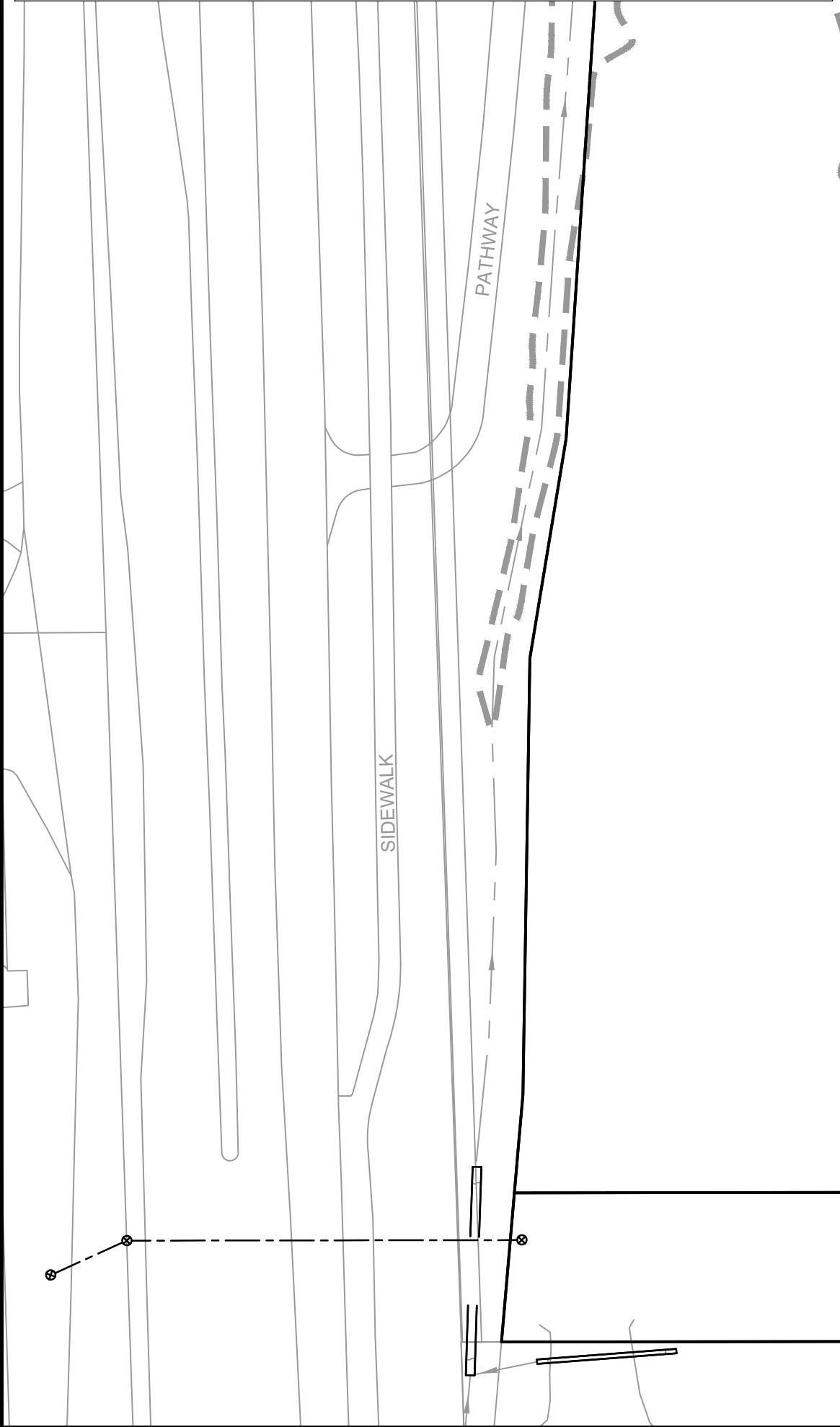
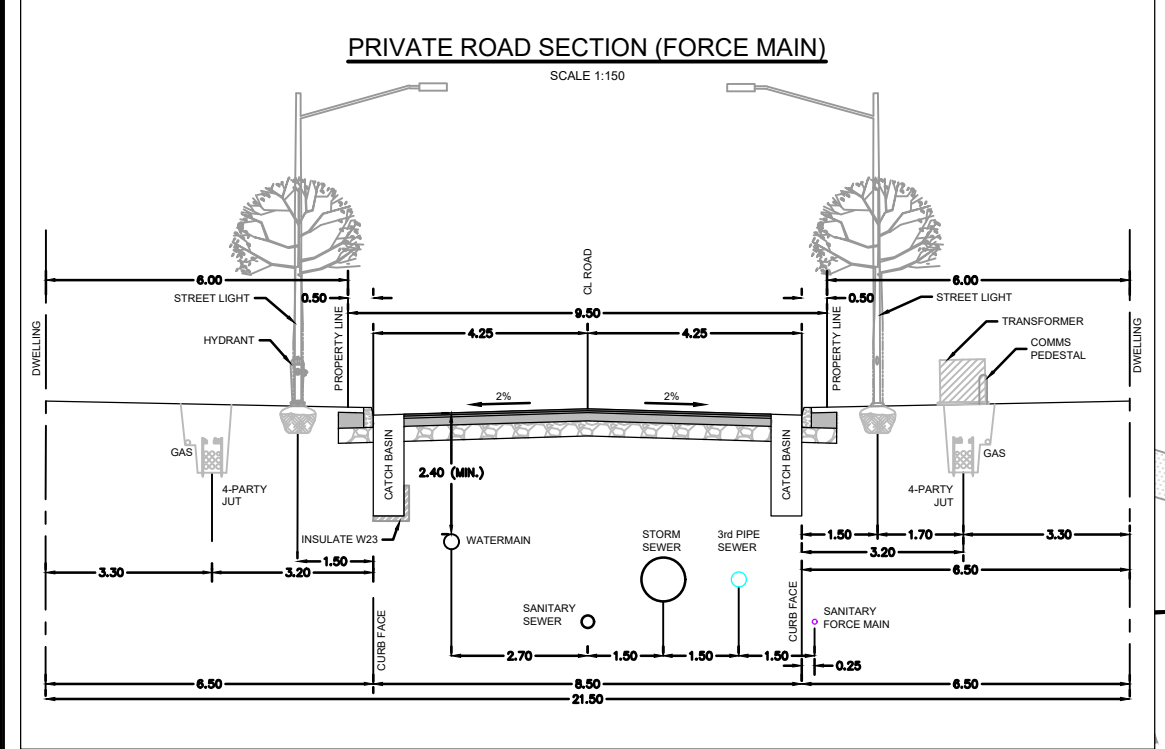
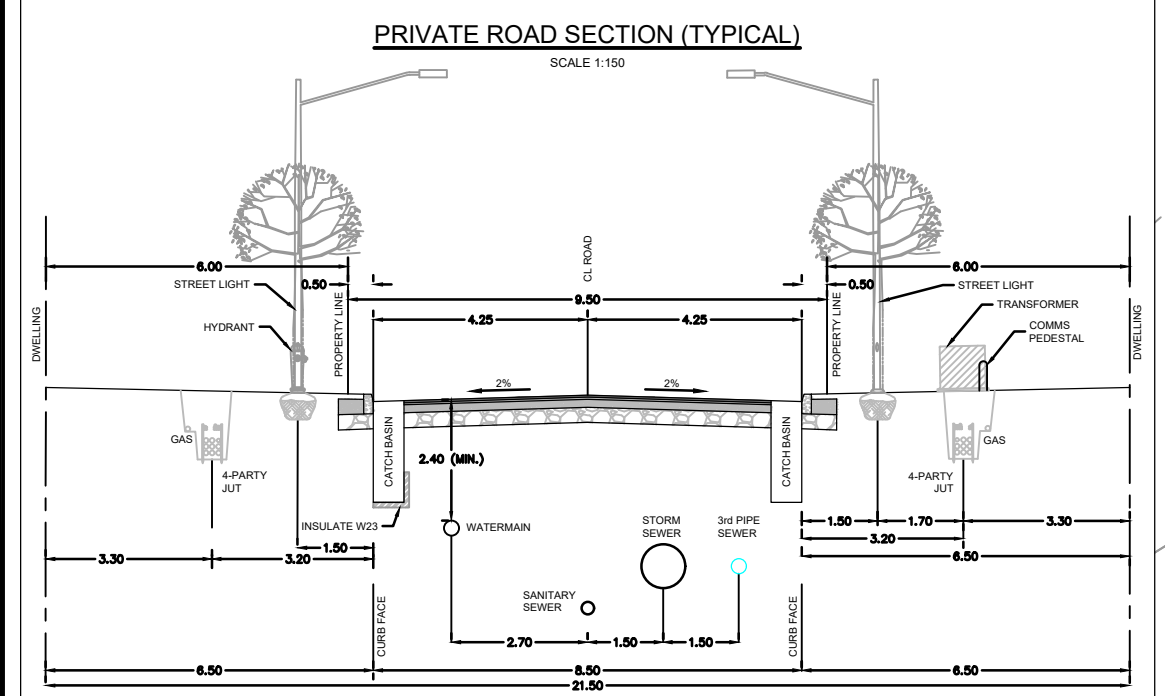


SAN MANHOLE TABLE			
MANHOLE ID	SIZE (mm)	T/G ELEV (m)	INVERT (m)
103	1200mmØ	96.01	W=92.10 S=91.57 NE=91.51
105	1200mmØ	97.09	N=91.73 SW=91.79 E=91.88
109	1200mmØ	97.02	W=92.21 E=92.22 S=92.81
111	1200mmØ	96.90	W=92.50 SE=92.53
113	1200mmØ	96.65	NW=92.59 S=92.62
115	1200mmØ	97.01	N=92.88 SW=92.71
117	1200mmØ	97.23	NE=93.12 SE=92.56 NW=92.55
119	1200mmØ	96.88	NW=92.72
121	1200mmØ	97.15	N=92.94 SW=93.54
123	1200mmØ	97.51	NE=94.07 SE=92.27 NW=92.26
125	1200mmØ	97.63	NE=91.99 SE=91.91 NW=91.91
127	1200mmØ	97.47	SE=92.07
129	1200mmØ	97.20	NE=91.82 SW=91.83
131	1200mmØ	97.88	NE=95.69 SW=95.68

STM MANHOLE TABLE			
MANHOLE ID	SIZE (mm)	T/G ELEV (m)	INVERT (m)
1	1200mmØ	96.60	N=93.20 SW=92.58 SE=92.91
100	1200mmØ	96.75	S=93.21 NW=93.21
102	1200mmØ	97.20	SE=93.25 NE=93.54 NW=93.40
104	1200mmØ	97.12	SW=93.63 NE=93.64
106	1800mmØ	96.97	SW=93.73 N=93.80
108	1200mmØ	96.82	S=93.83 NW=93.83
110	1800mmØ	96.87	SE=93.86 W=93.94
112	1800mmØ	96.98	E=94.10 W=94.71 S=94.24
114	1200mmØ	97.18	N=94.38 SW=94.45
116	1200mmØ	97.16	NE=94.55
118	1500mmØ	97.06	E=95.02
120	1200mmØ	97.47	NW=93.60 SE=93.52
122	1200mmØ	97.59	NE=94.20 SE=93.75 NW=93.82
124	1200mmØ	97.18	SW=94.35

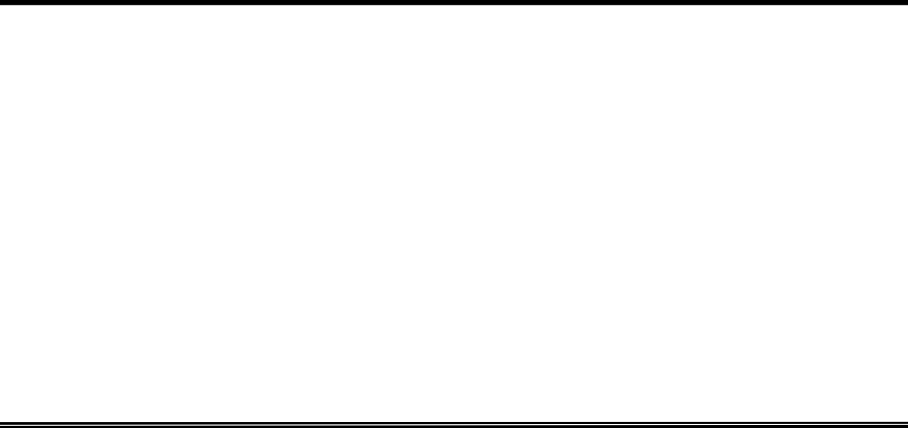
3rd PIPE MANHOLE TABLE			
MANHOLE ID	SIZE (mm)	T/G ELEV (m)	INVERT (m)
HW1		94.35	S=93.65
302	1200mmØ	96.84	SE=93.86 W=93.86
304	1200mmØ	96.90	NW=93.82 S=93.82 E=93.82
306	1200mmØ	96.94	N=93.90 SW=94.02
308	1200mmØ	97.07	NE=94.24 SW=94.24
310	1200mmØ	97.16	SE=94.52 NE=94.45 NW=94.52
312	1200mmØ	96.82	NW=94.60
314	1200mmØ	97.43	NW=94.65 SE=94.62 NE=94.48
316	1200mmØ	97.45	SE=94.89
318	1200mmØ	96.94	E=94.07 W=94.11 S=94.11
320	1200mmØ	97.15	SW=94.25 N=94.25
324	1200mmØ	97.03	E=94.42 W=94.42
326	1200mmØ	97.10	E=94.46 SW=94.46
328	1200mmØ	95.58	N=93.74 W=93.75
330	1200mmØ	97.55	NW=94.81 SE=95.00 NE=94.64

- LEGEND**
- SANITARY MANHOLE, SEWER & FLOW DIRECTION
 - STORM MANHOLE, SEWER & FLOW DIRECTION
 - WATERMAIN AND DIAMETER
 - VALVE & VALVE BOX
 - HYDRANT C/W VALVE & LEAD
 - CAP
 - 3m BUILDING SEPERATION OR 2 HOUR FIREWALL REQUIRED (BY BUILDER)



NOTE:
 THE POSITION OF ALL POLE LINES, CONDUITS, WATERMANS, SEWERS AND OTHER UNDERGROUND AND OVERGROUND UTILITIES AND STRUCTURES IS NOT NECESSARILY SHOWN ON THE CONTRACT DRAWINGS, AND WHERE SHOWN, THE ACCURACY OF THE POSITION OF SUCH UTILITIES AND STRUCTURES IS NOT GUARANTEED. BEFORE STARTING WORK, DETERMINE THE EXACT LOCATION OF ALL SUCH UTILITIES AND STRUCTURES AND ASSUME ALL LIABILITY FOR DAMAGE TO THEM.

No.	REVISION	DATE	BY
3	DP COMMENT RESOLUTION	MAY 22/26	MAB
2	DP COMMENT RESOLUTION	JAN 20/26	MAB
1	DRAFT PLAN APPLICATION	AUG 15/25	MAB



FOR REVIEW ONLY	DATE	BY
DESIGN	DTD	
CHECKED	MAB	
DRAWN	DTD	
CHECKED	MAB	
APPROVED	MAB	

FOR REVIEW ONLY

REGISTERED PROFESSIONAL ENGINEER
 L. R. WILSON
 10018055
 PROVINCE OF ONTARIO

REGISTERED PROFESSIONAL ARCHITECT
 M.A. BISSETT
 2026.05.22
 PROVINCE OF ONTARIO

NOVATECH
 Engineers, Planners & Landscape Architects
 Suite 200, 240 Michael Copland Drive
 Ottawa, Ontario, Canada K2M 1P6
 Telephone: (613) 254-9643
 Facsimile: (613) 254-5867
 Website: www.novatech-eng.com

CITY OF OTTAWA - 560 HAZELDEAN ROAD
 DOUBLE DECK SUBDIVISION

MASTER SERVICING PLAN

PROJECT No: 100057-05
 REV # 3
 DRAWING No: 100057-MGP

L:\2025\100057-05\Drawings\CAD\DWG\100057-MGP.dwg GP: May 21, 2025 - 1:58pm, employee

PL-487-2017 - 03/09/2017