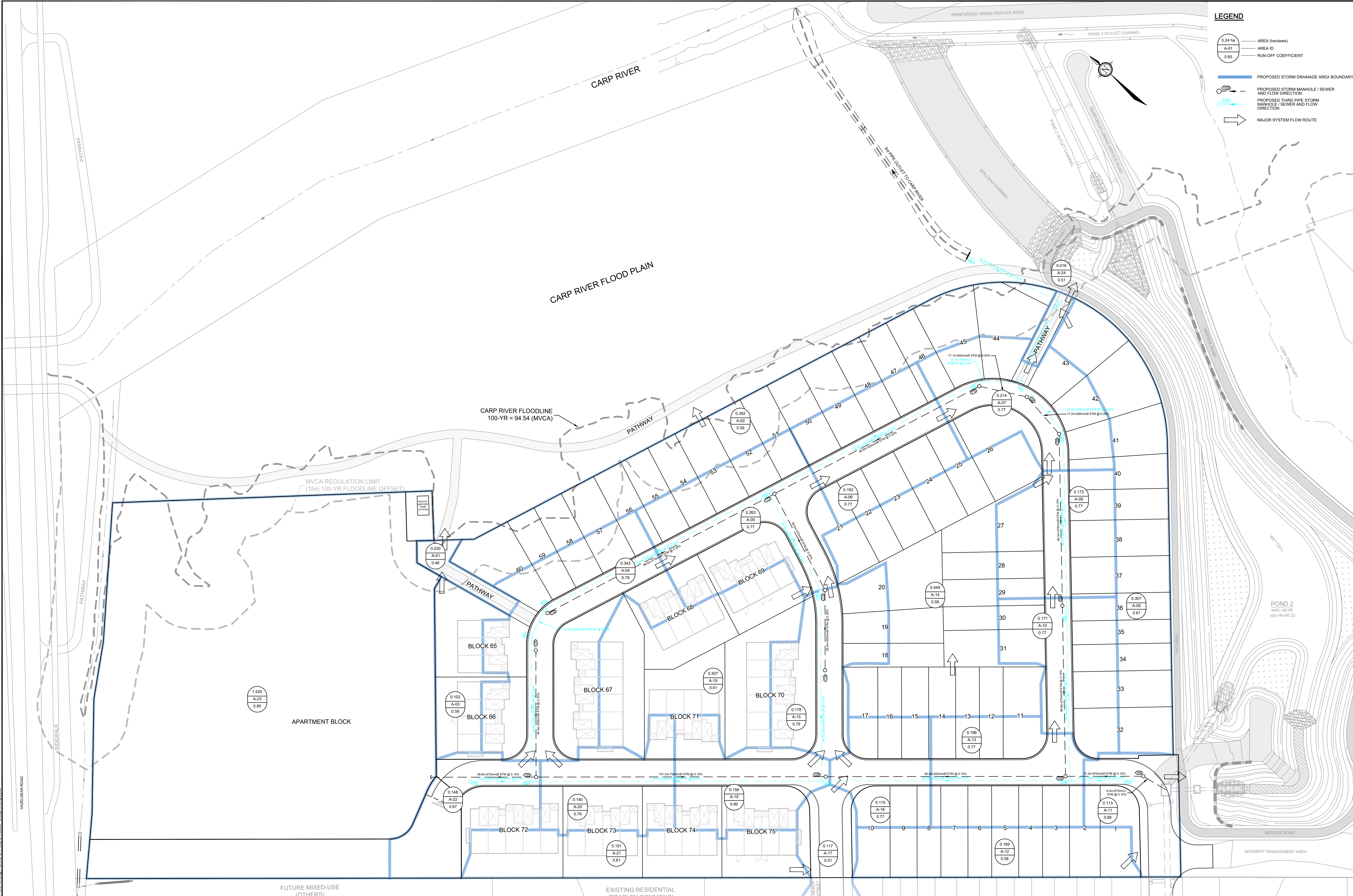


**LEGEND**

- 0.24 ha — AREA (hectares)
- A-01 — AREA ID
- 0.65 — RUN-OFF COEFFICIENT
- PROPOSED STORM DRAINAGE AREA BOUNDARY
- — PROPOSED STORM MANHOLE / SEWER AND FLOW DIRECTION
- — PROPOSED THIRD PIPE STORM MANHOLE / SEWER AND FLOW DIRECTION
- ➔ — MAJOR SYSTEM FLOW ROUTE



NOTE:  
 THE POSITION OF ALL POLE LINES, CONDUITS,  
 WATERMANS, SEWERS AND OTHER  
 UNDERGROUND AND OVERGROUND UTILITIES AND  
 STRUCTURES IS NOT NECESSARILY SHOWN ON  
 THE CONTRACT DRAWINGS, AND WHERE SHOWN,  
 THE ACCURACY OF THE POSITION OF SUCH  
 UTILITIES AND STRUCTURES IS NOT GUARANTEED.  
 BEFORE STARTING WORK, DETERMINE THE EXACT  
 LOCATION OF ALL SUCH UTILITIES AND  
 STRUCTURES AND ASSUME ALL LIABILITY FOR  
 DAMAGE TO THEM.

No.	REVISION	DATE	BY
3	DP COMMENT RESOLUTION	MAY 22/26	MAB
2	DP COMMENT RESOLUTION	JAN 20/26	MAB
1	DRAFT PLAN APPLICATION	AUG 15/25	MAB

SCALE	1:500
0	5 10 15 20

FOR REVIEW ONLY	
LRW	✓
MAB	✓
DTD	✓
MAB	✓
MAB	✓

**FOR REVIEW ONLY**

PROFESSIONAL ENGINEER  
 L.R. WILSON  
 10016055  
 PROVINCE OF ONTARIO

PROFESSIONAL ENGINEER  
 M.A. BISSETT  
 2026.05.22  
 PROVINCE OF ONTARIO

**NOVATECH**  
 Engineers, Planners & Landscape Architects  
 Suite 200, 240 Michael Cowpland Drive  
 Ottawa, Ontario, Canada K2M 1P6  
 Telephone: (613) 254-9643  
 Facsimile: (613) 254-5867  
 Website: www.novatech-eng.com

CITY OF OTTAWA - 560 HAZELDEAN ROAD  
 DOUBLE DECK SUBDIVISION

**STORM DRAINAGE AREA PLAN**

PROJECT No: 100057-05  
 REV # 3  
 DRAWING No: 100057-STM

C:\0000\100057-05\000057-05.dwg, P:\ANSI-B1, May 21, 2026 - 2:38pm, emp386