

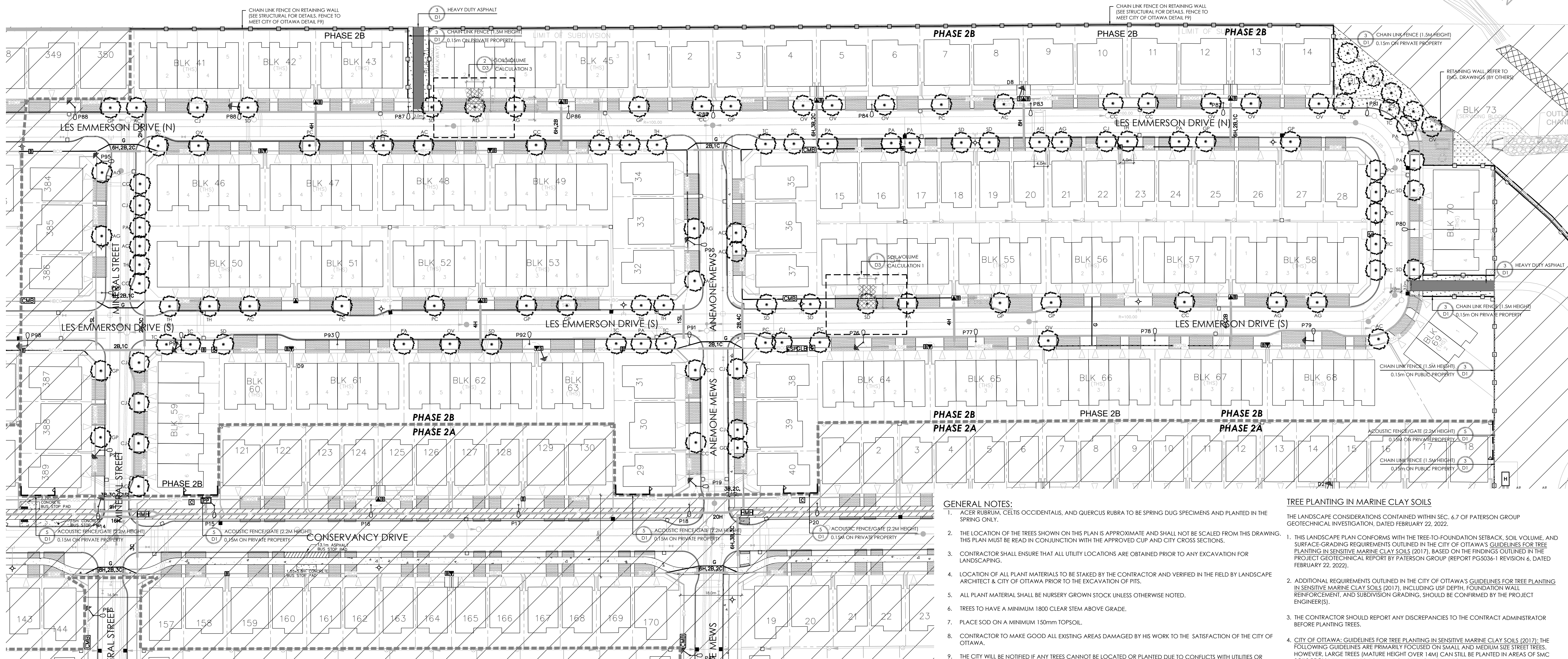
# The Conservancy

## CAIVAN COMMUNITIES CONSERVANCY EAST STREETScape PHASE 2B

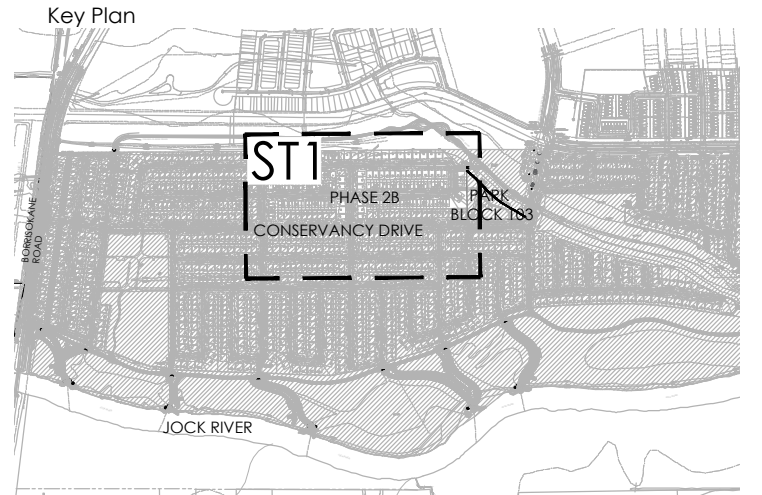


### LIST OF DRAWINGS:

- ST1 - STREETScape PLAN
- D1 - DETAILS
- D2 - ROW CROSS - SECTIONS
- D3 - SOIL CALCULATIONS



Contractor shall check all dimensions on the work and report any discrepancy to the Landscape Architect before proceeding. All drawings and specifications are the property of the Landscape Architect and must be returned at the completion of the work. This drawing is not to be used for construction until signed by the Landscape Architect.



SCALE 1:15000

**LEGEND**

---	PROPERTY LINE
---	PHASE LINE
<b>FENCING</b>	
---	ACOUSTIC FENCE WITH GATE LOCATED 0.3M ON PRIVATE PROPERTY
---	CHAIN LINK FENCE
<b>PLANTING</b>	
○	LARGE DECIDUOUS STREET TREE (>15m HEIGHT)
○	MEDIUM DECIDUOUS STREET TREE (7.5m TO 15m HEIGHT)
○	SODDING
<b>UTILITIES</b>	
⬢	PROPOSED HYDRO TRANSFORMER
⬢	PROPOSED CABLE PEDESTAL
⬢	PROPOSED BELL PEDESTAL
⬢	CURB STOP
⬢	PROPOSED BELL CABINET
⬢	COMMUNITY MAIL BOX LOCATION
⬢	PROPOSED STREET LIGHT
⬢	FIRE HYDRANT
⬢	EXISTING HYDRO POLE

No.	Description	Date
16	Re-issued for Ph 2B Second Submission	2024-08-29
15	Issued for Ph 2B Second Submission	2024-08-12
14	Issued for CUP Coordination	2024-06-25
13	Issued Ph 2B Submission	2024-05-15
12	Revised Submission REV 2	2023-10-23
11	Issued for Revised Submission	2023-10-18
10	Issued for Client Review	2023-10-05
9	Revised for CUP Update	2023-07-26
8	Re-issued for Second Submission	2023-07-18
7	Re-issued for Second Submission	2023-06-29
6	Re-issued for Second Submission	2023-03-24
5	Issued for Second Submission	2023-02-28
4	Issued for Revised First Submission	2023-02-09
3	Issued for Revised First Submission	2023-01-10
2	Issued for CUP Coordination	2022-12-13
1	Issued for First Submission	2022-09-30

**GENERAL NOTES:**

- ACER RUBRUM, CELTIS OCCIDENTALIS, AND QUERCUS RUBRA TO BE SPRUNG DUG SPECIMENS AND PLANTED IN THE SPRING ONLY.
- THE LOCATION OF THE TREES SHOWN ON THIS PLAN IS APPROXIMATE AND SHALL NOT BE SCALED FROM THIS DRAWING. THIS PLAN MUST BE READ IN CONJUNCTION WITH THE APPROVED CUP AND CITY CROSS SECTIONS.
- CONTRACTOR SHALL ENSURE THAT ALL UTILITY LOCATIONS ARE OBTAINED PRIOR TO ANY EXCAVATION FOR LANDSCAPING.
- LOCATION OF ALL PLANT MATERIALS TO BE STAKED BY THE CONTRACTOR AND VERIFIED IN THE FIELD BY LANDSCAPE ARCHITECT & CITY OF OTTAWA PRIOR TO THE EXCAVATION OF PITS.
- ALL PLANT MATERIAL SHALL BE NURSERY GROWN STOCK UNLESS OTHERWISE NOTED.
- TREES TO HAVE A MINIMUM 1800 CLEAR STEM ABOVE GRADE.
- PLACE SOD ON A MINIMUM 150mm TOPSOIL.
- CONTRACTOR TO MAKE GOOD ALL EXISTING AREAS DAMAGED BY HIS WORK TO THE SATISFACTION OF THE CITY OF OTTAWA.
- THE CITY WILL BE NOTIFIED IF ANY TREES CANNOT BE LOCATED OR PLANTED DUE TO CONFLICTS WITH UTILITIES OR DRIVEWAYS. THE REQUIRED TREES NOT PLANTED ARE SUBJECT TO TREE BANKING. THE FINAL NUMBER OF TREES TO BE BANKED WILL BE PROVIDED TO THE CITY FOLLOWING ALL PLANTINGS.
- ALL PLANT MATERIAL SHALL BE WARRANTIED FOR TWO YEARS FROM THE DATE OF PERFORMANCE ACCEPTANCE AS DETERMINED BY THE CITY OF OTTAWA.
- PERIODIC REVIEWS OF PLANTING SHALL BE CARRIED OUT BY THE LANDSCAPE ARCHITECT.
- PLANTINGS TO BE STAKED FOR APPROVAL PRIOR TO CONSTRUCTION
- CITY GRASS CUTTING RESPONSIBILITIES FOR SODDED AREAS SHALL BEGIN FOLLOWING PERFORMANCE ACCEPTANCE INSPECTION BY THE LANDSCAPE ARCHITECT AND THE CITY. ACCEPTANCE WILL BE PROVIDED ONLY IF:
  - SOD IS PROPERLY ESTABLISHED.
  - TURF IS FREE OF DEAD SPOTS AND WEEDS.
  - SODDED AREAS HAVE BEEN CUT WITHIN 24 HOURS PRIOR TO ACCEPTANCE INSPECTION.
  - MINIMUM OF 3 WEEKS HAVE ELAPSED FOLLOWING LAYING OF SOD.
  - A MINIMUM OF TWO CUTS HAVE TAKEN PLACE.
  - SODDED AREAS HAVE BEEN TOP-DRESSED, SEEDED AND AERATED

**14. STREET TREE REQUIREMENT BASED ON DRAFT CONDITIONS FOR FINAL APPROVAL:**

STREET TREE REQUIREMENT PH2B:	
• INTERIOR (NON-CORNERS) SINGLE LOTS (33):	33
• EXTERIOR (CORNERS) SINGLE LOTS (20):	14
• 3-UNITS TOWNHOUSE (5):	15
• 4-UNITS TOWNHOUSE (7):	28
• 5-UNITS TOWNHOUSE (11):	55
• 6-UNITS TOWNHOUSE (7):	42
<b>TOTAL NUMBER OF TREES REQUIRED:</b>	<b>187</b>
<b>NUMBER OF STREET TREES SHOWN ON PLAN:</b>	<b>114</b>
<b>DIFFERENCE:</b>	<b>-73</b>
<b>STREET TREE REQUIREMENT PH2A:</b>	
• INTERIOR (NON-CORNERS) SINGLE LOTS (134):	134
• EXTERIOR (CORNERS) SINGLE LOTS (20):	40
<b>TOTAL NUMBER OF TREES REQUIRED:</b>	<b>174</b>
<b>NUMBER OF STREET TREES SHOWN ON PLAN:</b>	<b>252</b>
<b>DIFFERENCE:</b>	<b>+78</b>

\*NOTE\* TREE COUNTS AND ANY NECESSARY COMPENSATION REQUIREMENTS WILL BE UPDATED AT FINAL PLAN SUBMISSION. TREE COUNTS SHOWN CORRELATE TO THE CURRENT PHASE 2A/2B EXTENTS ONLY.

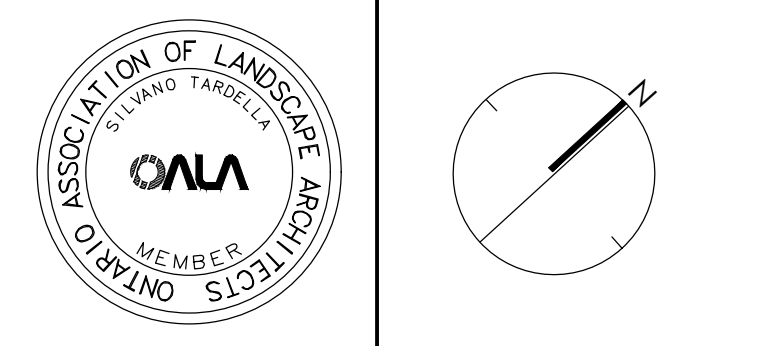
- STREET TREE PLANTING GUIDELINE**  
NOTE: APPROVED CROSS SECTIONS SHALL TAKE PRECEDENCE  
4.5m - STREET LIGHT (SMALL TREE <7m MATURE HT.)  
2.5m - STREET LIGHT  
3.0m - HYDRO TRANSFORMER  
1.5m - PATH, DRIVEWAY, FENCE, SOUND WALL  
4.5m - CONFRERS MINIMUM SETBACK FROM CURB  
2.5m - FIRE HYDRANTS  
1.5m - WATER SERVICE / CURB STOP  
1.5m - BELL / CABLE PEDESTALS

**TREE PLANTING IN MARINE CLAY SOILS**

THE LANDSCAPE CONSIDERATIONS CONTAINED WITHIN SEC. 6.7 OF PATERSON GROUP GEOTECHNICAL INVESTIGATION, DATED FEBRUARY 22, 2022.

- THIS LANDSCAPE PLAN CONFORMS WITH THE TREE-TO-FOUNDATION SETBACK, SOIL VOLUME, AND SURFACE-GRADING REQUIREMENTS OUTLINED IN THE CITY OF OTTAWA'S GUIDELINES FOR TREE PLANTING IN SENSITIVE MARINE CLAY SOILS (2017), BASED ON THE FINDINGS OUTLINED IN THE PROJECT GEOTECHNICAL REPORT BY PATERSON GROUP (REPORT PG5036) - REVISION 6, DATED FEBRUARY 22, 2022.
- ADDITIONAL REQUIREMENTS OUTLINED IN THE CITY OF OTTAWA'S GUIDELINES FOR TREE PLANTING IN SENSITIVE MARINE CLAY SOILS (2017), INCLUDING USE DEPTH, FOUNDATION WALL REINFORCEMENT, AND SUBDIVISION GRADING, SHOULD BE CONFIRMED BY THE PROJECT ENGINEER(S).
- THE CONTRACTOR SHOULD REPORT ANY DISCREPANCIES TO THE CONTRACT ADMINISTRATOR BEFORE PLANTING TREES.
- CITY OF OTTAWA: GUIDELINES FOR TREE PLANTING IN SENSITIVE MARINE CLAY SOILS (2017): THE FOLLOWING GUIDELINES ARE PRIMARILY FOCUSED ON SMALL AND MEDIUM SIZE STREET TREES. HOWEVER, LARGE TREES (MATURE HEIGHT OVER 14M) CAN STILL BE PLANTED IN AREAS OF SMC SOILS PROVIDED A TREE TO FOUNDATION SETBACK EQUAL TO THE FULL MATURE HEIGHT OF THE TREE CAN BE PROVIDED (E.G. IN A PARK OR OTHER GREEN SPACE). FOR STREET TREES IN THE ROAD RIGHT-OF-WAY WHERE SMC SOILS HAVE BEEN IDENTIFIED, THE TREE TO FOUNDATION SETBACKS MAY BE REDUCED TO 4.5M FOR SMALL (MATURE TREE HEIGHT UP TO 7.5M) AND MEDIUM SIZE TREES (MATURE TREE HEIGHT 7.5M-14M) PROVIDED ALL OF THE FOLLOWING SIX CONDITIONS ARE MET:
  - THE MODIFIED PLASTICITY INDEX OF THE SOIL BETWEEN THE UNDERSIDE OF FOOTING (USF) AND A DEPTH OF 3.5M GENERALLY DOES NOT EXCEED 40%. THIS CORRESPONDS TO SOILS WITH LOW/MEDIUM POTENTIAL FOR SOIL VOLUME CHANGE. CLAY SOILS THAT EXCEED THE 40% PLASTICITY INDEX ARE CONSIDERED TO HAVE HIGH POTENTIAL FOR SOIL VOLUME CHANGE. FOR THESE WORST-CASE SOILS, THE SETBACKS AND TREE PLANTING RESTRICTIONS REMAIN UNCHANGED FROM THE 2005 CLAY SOILS POLICY (TREE SETBACK MUST EQUAL THE MATURE HEIGHT OF THE TREE - I.E. 7.5M SETBACK FOR SMALL TREES).
  - THE USF IS 2.1M OR GREATER BELOW THE LOWEST FINISHED GRADE. NOTE: THIS FOOTING LEVEL MUST BE SATISFIED FOR FOOTINGS WITHIN 10M OF THE TREE, AS MEASURED FROM THE CENTRE OF THE TREE TRUNK, AND VERIFIED BY MEANS OF THE GRADING PLAN AS INDICATED IN THE PROCEDURAL CHANGES BELOW.
  - A SMALL SIZE TREE MUST BE PROVIDED WITH A MINIMUM OF 25M<sup>3</sup> OF AVAILABLE SOIL VOLUME, AS DETERMINED BY A LANDSCAPE ARCHITECT. A MEDIUM SIZE TREE MUST BE PROVIDED WITH A MINIMUM OF 30M<sup>3</sup> OF AVAILABLE SOIL VOLUME, AS DETERMINED BY A LANDSCAPE ARCHITECT. THE DEVELOPER WILL ENSURE THE SOIL IS GENERALLY UNCOMPACTED WHEN BACKFILLING IN STREET TREE PLANTING LOCATIONS.  
NOTE: THE SOIL VOLUME CALCULATION MUST BE BASED ON A DEPTH OF 1.5M BELOW FINISHED GRADE (E.G. 5M LENGTH X 4M WIDTH AT SURFACE X 1.5M DEPTH = 30M<sup>3</sup>). IT MAY INCLUDE LANDS IN THE RIGHT-OF-WAY AND ON PRIVATE PROPERTY, BUT MUST SUBTRACT THE VOLUME OF SHALLOW UTILITY TRENCHES (I.E. VOLUME OF SHALLOW UTILITY TRENCHES CANNOT COUNT TOWARDS MINIMUM SOIL VOLUME).
  - THE TREE SPECIES MUST BE SMALL TO MEDIUM SIZE, AS CONFIRMED BY A LANDSCAPE ARCHITECT IN THE LANDSCAPE PLAN.
  - THE FOUNDATION WALLS ARE TO BE REINFORCED AT LEAST NOMINALLY (MINIMUM OF TWO UPPER AND TWO LOWER 15M BARS IN THE FOUNDATION WALL) TO PROVIDE DUCTILITY AS DESCRIBED IN THE GEOTECHNICAL REPORT.
  - GRADING SURROUNDING THE TREE MUST PROMOTE DRAINAGE TO THE TREE ROOT ZONE (IN SUCH A MANNER AS NOT TO BE DETRIMENTAL TO THE TREE), AS NOTED ON THE SUBDIVISION GRADING PLAN.

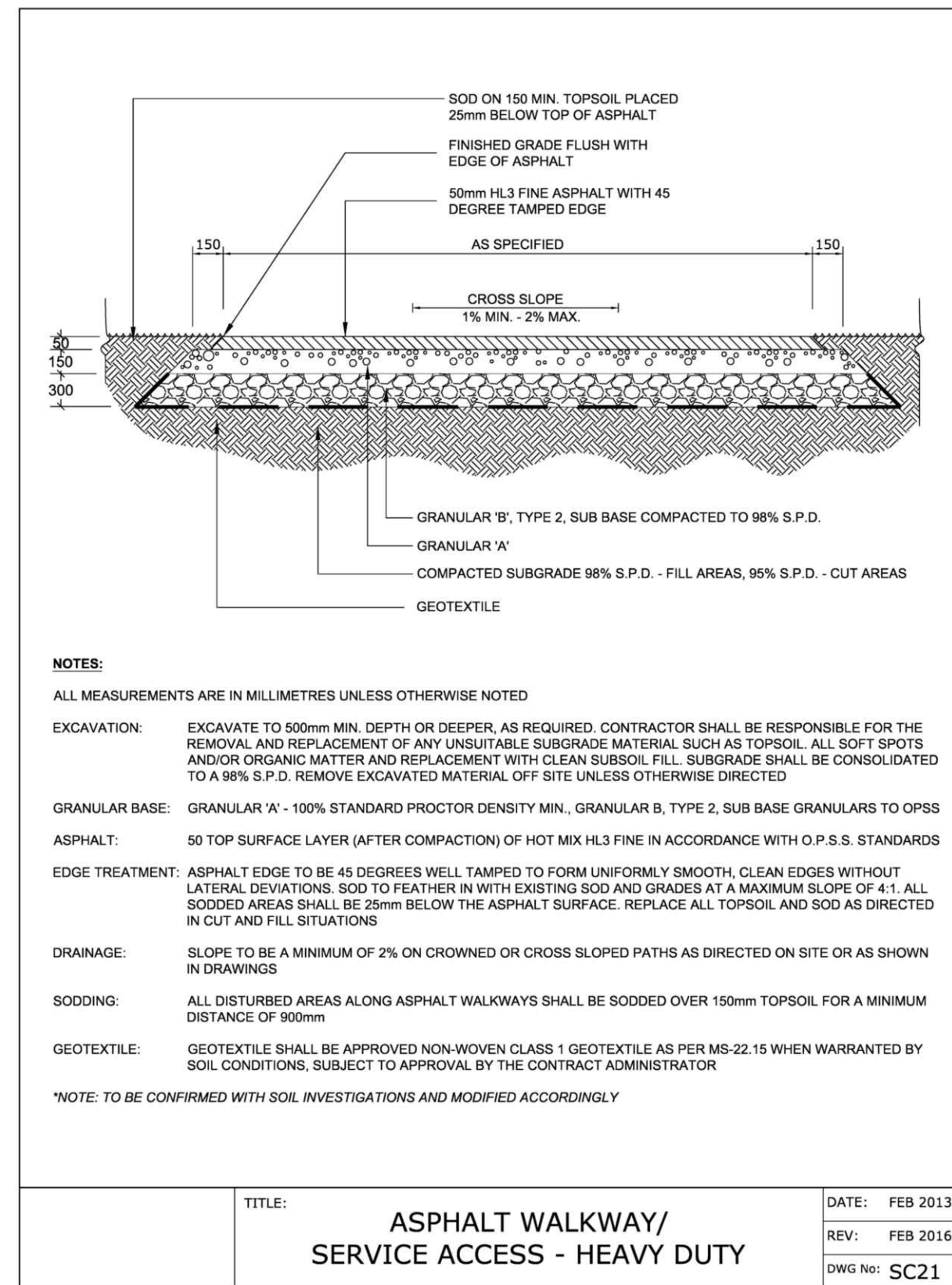
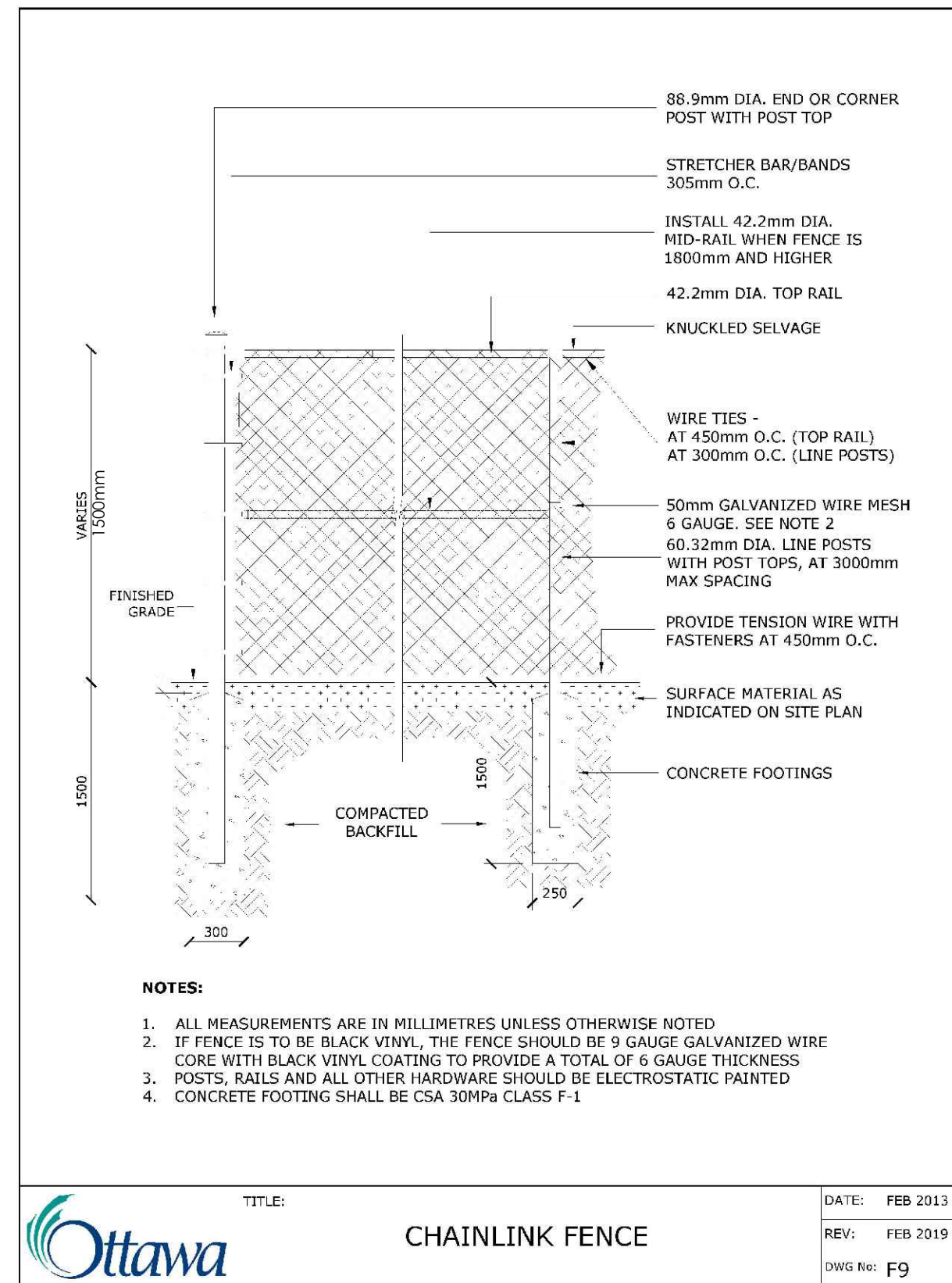
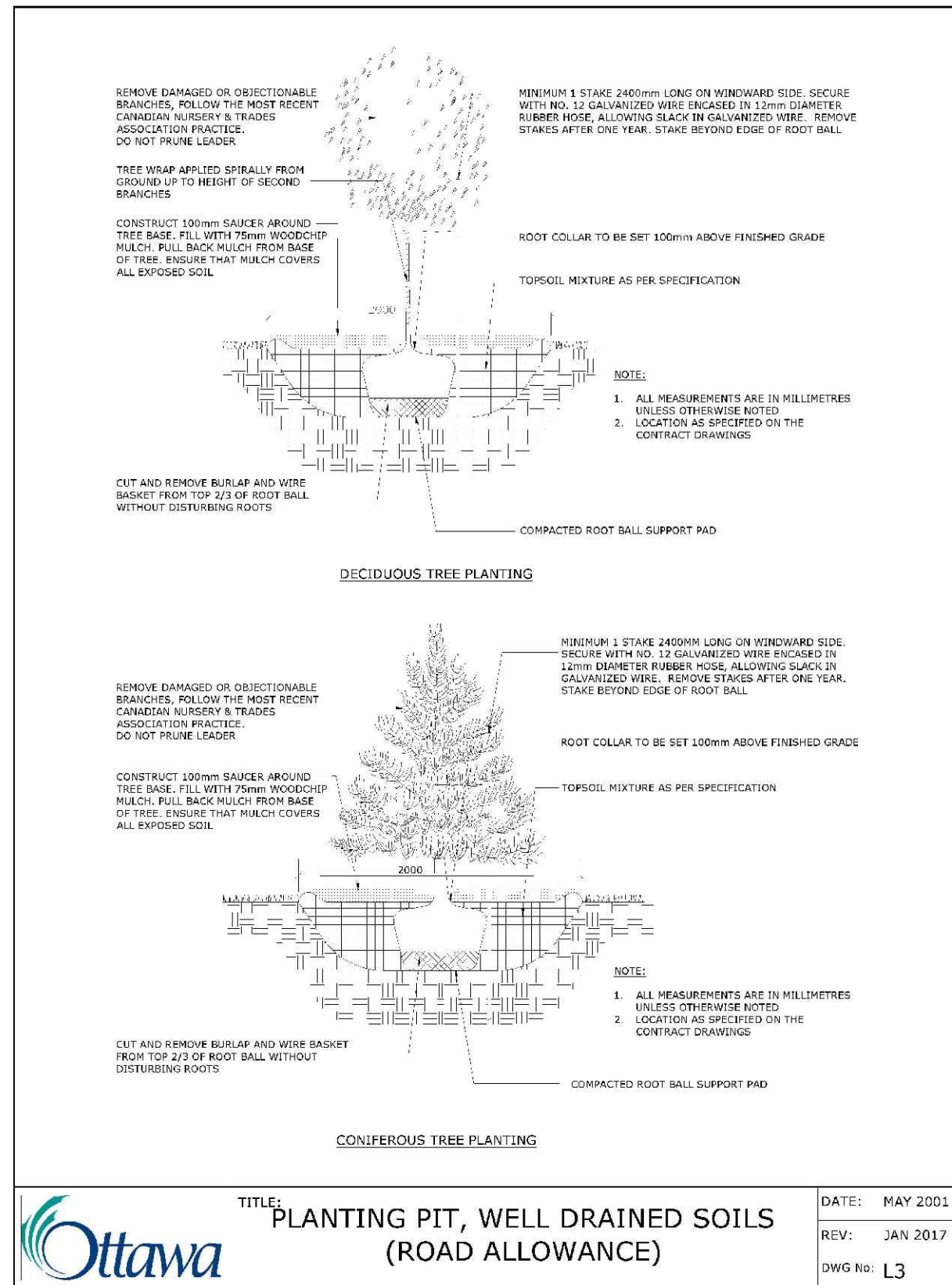
KEY	QTY	BOTANICAL NAME	COMMON NAME	MATURE HT. (M)	SIZE	REMARKS
<b>DECIDUOUS TREES - MEDIUM (8-14M HEIGHT)</b>						
AC	10	ACER RUBRUM 'REDPOINTE'	REDPOINTE RED MAPLE	14	50mm	B&B
AG	10	AESCULUS GLABRA	OHIO BUCKEYE	12	50mm	B&B
CJ	10	CORYLUS COLOURNA	TURKISH HAZEL	14	50mm	B&B
CC	10	CERCIDIPHYLLUM JAPONICUM	KATSURU TREE	14	50mm	B&B
GP	11	GINKGO BILOBA 'PRINCETON SENTRY'	PRINCETON SENTRY GINKGO	14	50mm	B&B
OV	10	OSTRYA VIRGINIANA	IRONWOOD	12	50mm	B&B
PA	10	PHLELODENDRON AMURENSE	AMUR CORKTREE	14	50mm	B&B
PC	10	PYRUS CALLERYANA	ORNAMENTAL PEAR	13	50mm	B&B
SD	11	SORBUS DECORA	SHOWY MOUNTAINASH	10	50mm	B&B
TC	12	TILIA CORDATA CORINTHIAN	CORINTHIAN LINDEN	14	50mm	B&B
TH	10	TILIA X HARVEST GOLD	HARVEST GOLD LINDEN	13	50mm	B&B



**NAK** design strategies  
1285 WELLINGTON STREET W, OTTAWA, ON K1Y 3A8 CANADA  
T 613.237.2345 F 613.237.4423 NAKDESIGNSTRATEGIES.COM

**Conservancy East Phase 2B**

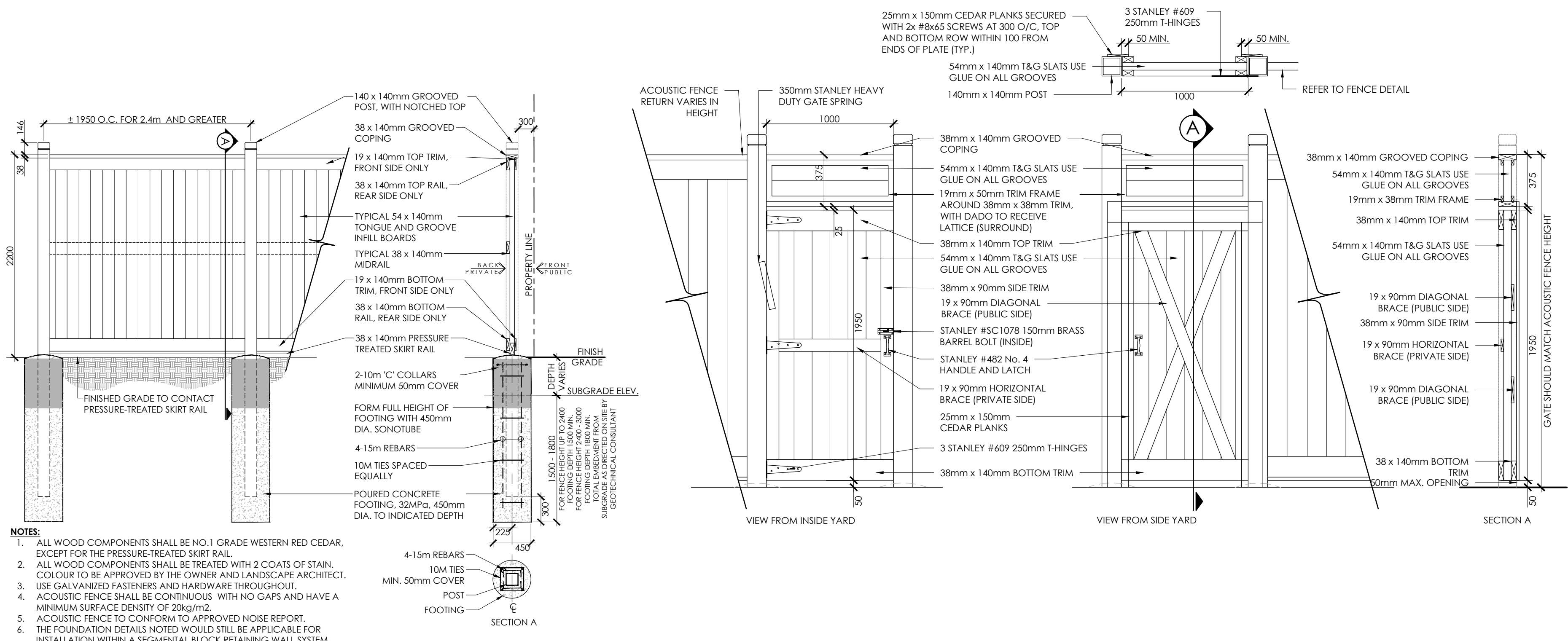
**STREETScape**



1 DECIDUOUS TREE PLANTING  
N.T.S.

2 1.5m CHAINLINK FENCE  
N.T.S.

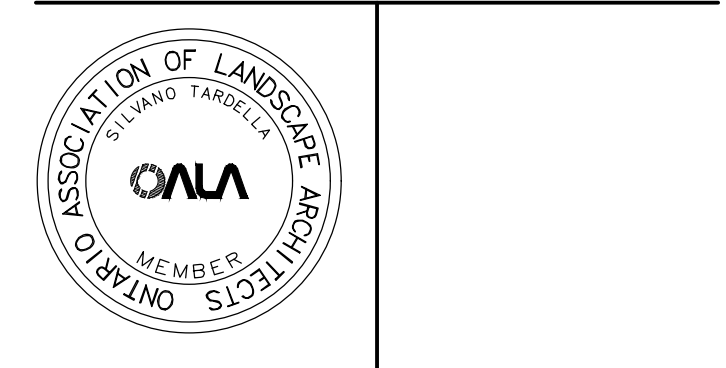
3 HEAVY DUTY ASPHALT WALKWAY  
N.T.S.



4 2.2m ACOUSTIC FENCE/GATE  
N.T.S.

Contractor shall check all dimensions on the work and report any discrepancy to the Landscape Architect before proceeding. All drawings and specifications are the property of the Landscape Architect and must be returned at the completion of the work. This drawing is not to be used for construction until signed by the Landscape Architect.

No.	Description	Date
16	Re-issued for Ph 2B Second Submission	2024-08-29
15	Issued for Ph 2B Second Submission	2024-08-12
14	Issued for CUP Coordination	2024-06-25
13	Issued Ph 2B Submission	2024-05-15
12	Revised Submission REV 2	2023-10-23
11	Issued for Revised Submission	2023-10-18
10	Issued for Client Review	2023-10-05
9	Revised for CUP Update	2023-07-26
8	Re-issued for Second Submission	2023-07-18
7	Re-issued for Second Submission	2023-06-29
6	Re-issued for Second Submission	2023-03-24
5	Issued for Second Submission	2023-02-28
4	Issued for Revised First Submission	2023-02-09
3	Issued for Revised First Submission	2023-01-10
2	Issued for CUP Coordination	2022-12-13
1	Issued for First Submission	2022-09-30



**NAK**  
design strategies

1285 WELLINGTON STREET W, OTTAWA, ON K1Y 3A8 CANADA  
T 613.237.2345 F 613.237.6423 NAKDESIGNSTRATEGIES.COM

Project

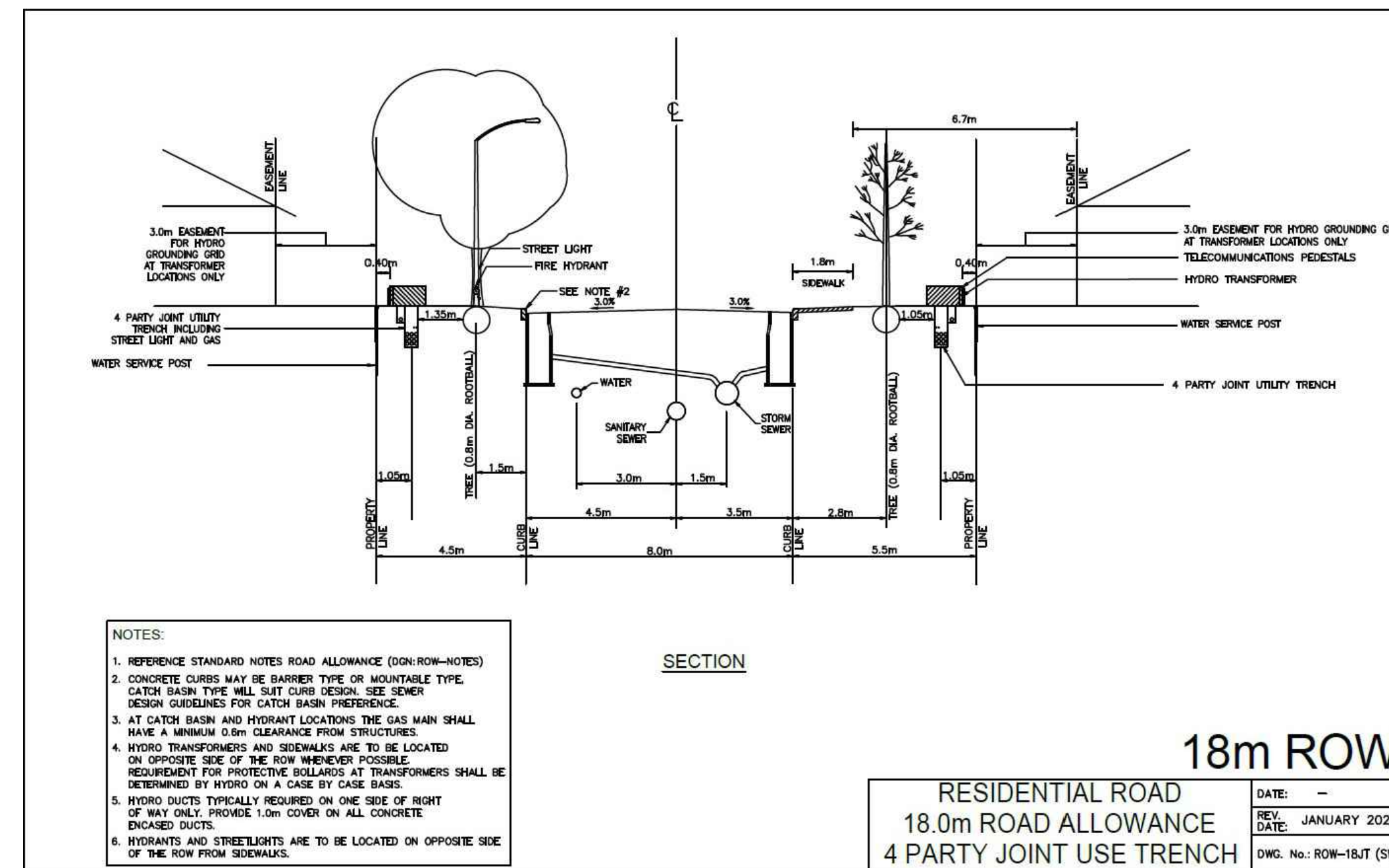
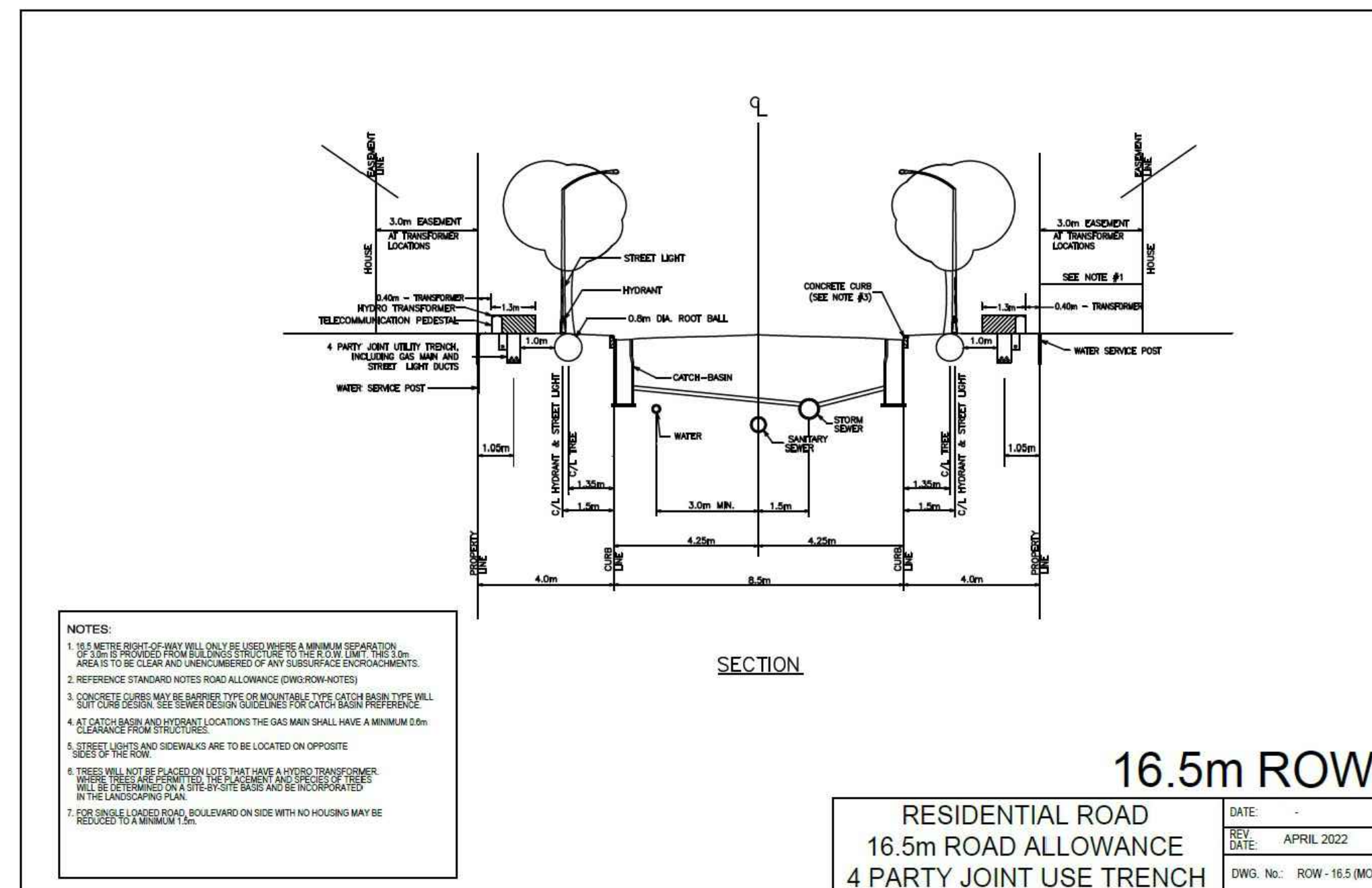
Conservancy East  
Phase 2B

Date	Scale	Drawn	Checked	Job No.
JANUARY 2023	N.T.S.	JC	MK	22-004

Sheet

**D1**

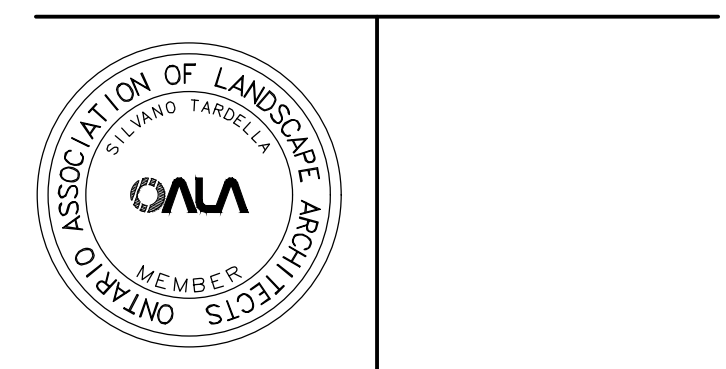
Contractor shall check all dimensions on the work and report any discrepancy to the Landscape Architect before proceeding. All drawings and specifications are the property of the Landscape Architect and must be returned at the completion of the work. This drawing is not to be used for construction until signed by the Landscape Architect.



No.	Description	Date
16	Re-issued for Ph 2B Second Submission	2024-08-29
15	Issued for Ph 2B Second Submission	2024-08-12
14	Issued for CUP Coordination	2024-06-25
13	Issued Ph 2B Submission	2024-05-15
12	Revised Submission REV 2	2023-10-23
11	Issued for Revised Submission	2023-10-18
10	Issued for Client Review	2023-10-05
9	Revised for CUP Update	2023-07-26
8	Re-issued for Second Submission	2023-07-18
7	Re-issued for Second Submission	2023-06-29
6	Re-issued for Second Submission	2023-03-24
5	Issued for Second Submission	2023-02-28
4	Issued for Revised First Submission	2023-02-09
3	Issued for Revised First Submission	2023-01-10
2	Issued for CUP Coordination	2022-12-13
1	Issued for First Submission	2022-09-30

Revision

City Approval Stamp



**NAK** design strategies  
1285 WELLINGTON STREET W. OTTAWA, ON K1Y 3A8 CANADA  
T 613.237.2345 F 613.237.6423 NAKDESIGNSTRATEGIES.COM

Project

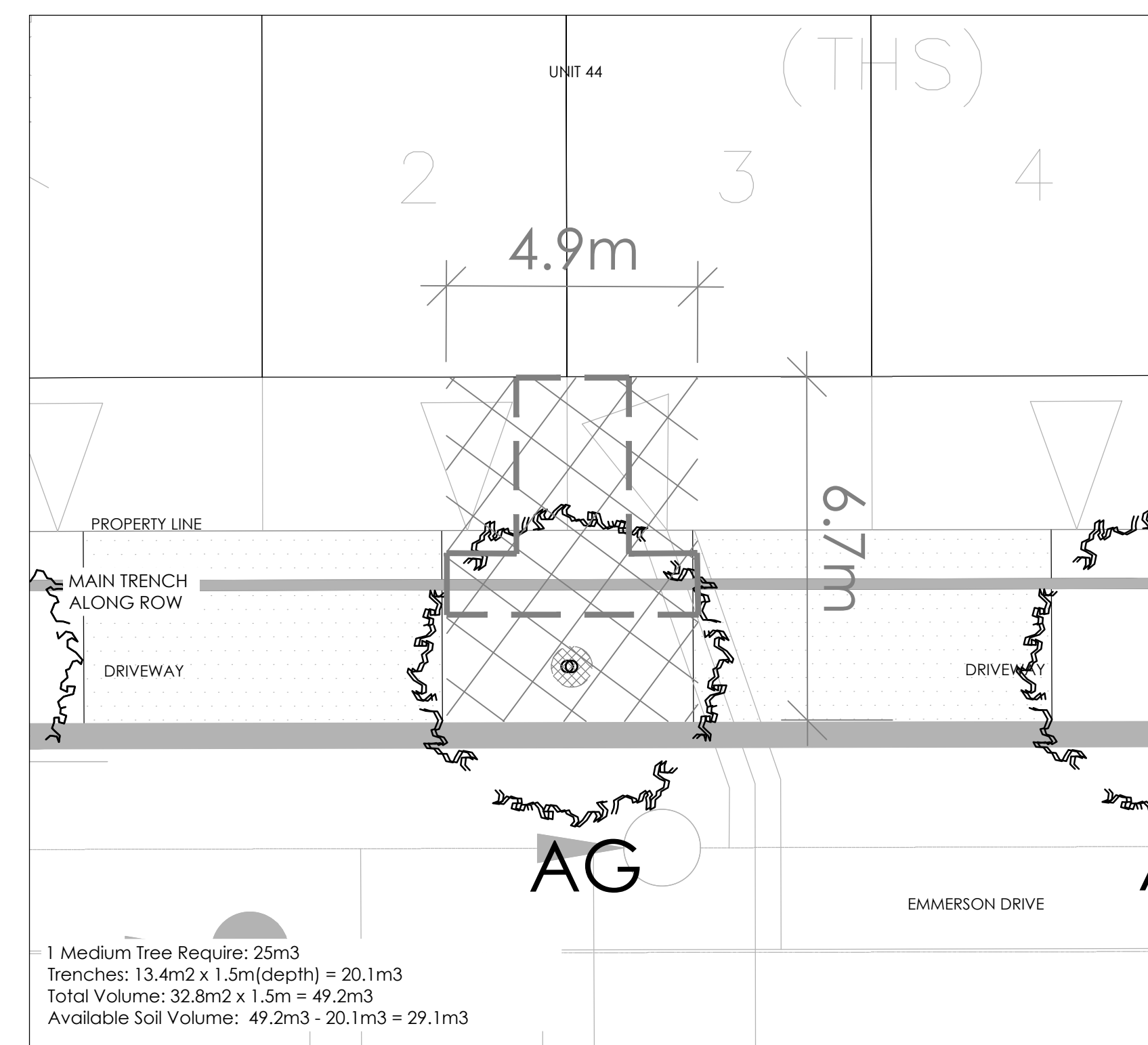
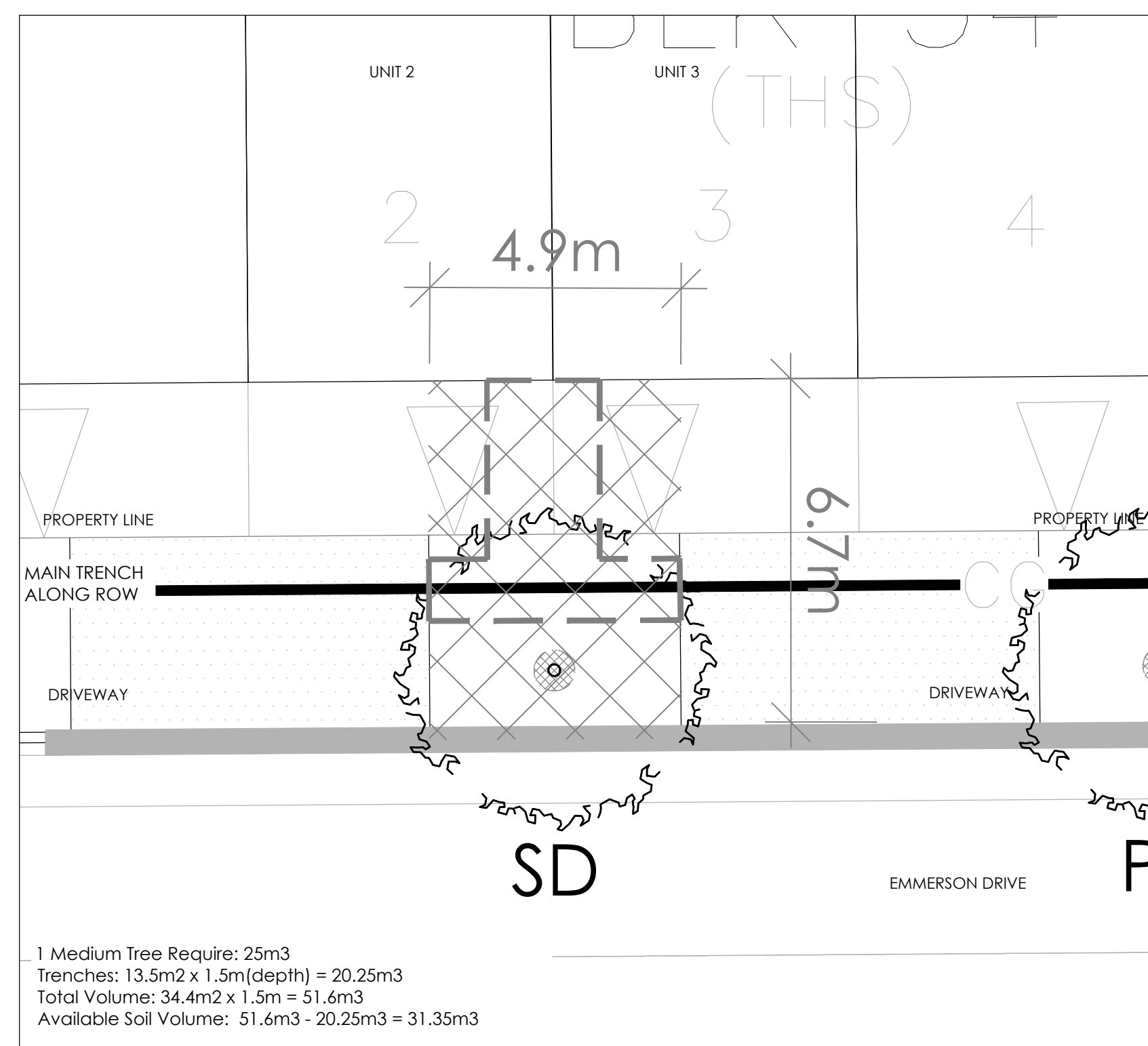
Conservancy East  
Phase 2B

Title  
ROW CROSS-SECTIONS

Date: JANUARY 2023 Sheet  
Scale: N.T.S.  
Drawn: JC/NM  
Checked: MK  
Job No.: 22-004

D2

Contractor shall check all dimensions on the work and report any discrepancy to the Landscape Architect before proceeding. All drawings and specifications are the property of the Landscape Architect and must be returned at the completion of the work. This drawing is not to be used for construction until signed by the Landscape Architect.



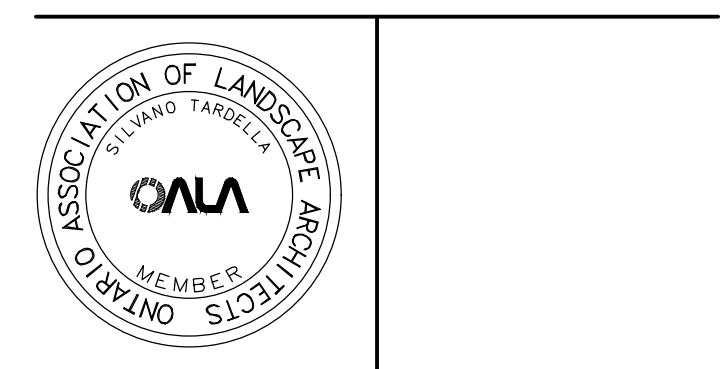
**1** SOIL VOLUME CALCULATION 1 (SCALE 1:100)  
 UNITS 2,3 - 16.5M ROW - EMMERSON DRIVE

**2** SOIL VOLUME CALCULATION 2 (SCALE 1:100)  
 UNIT 44 - 16.5M ROW - EMMERSON DRIVE

No.	Description	Date
16	Re-Issued for Ph 2B Second Submission	2024-08-29
15	Issued for Ph 2B Second Submission	2024-08-12
14	Issued for CUP Coordination	2024-06-25
13	Issued Ph 2B Submission	2024-05-15
12	Revised Submission REV 2	2023-10-23
11	Issued for Revised Submission	2023-10-18
10	Issued for Client Review	2023-10-05
9	Revised for CUP Update	2023-07-26
8	Re-Issued for Second Submission	2023-07-18
7	Re-Issued for Second Submission	2023-06-29
6	Re-Issued for Second Submission	2023-03-24
5	Issued for Second Submission	2023-02-28
4	Issued for Revised First Submission	2023-02-09
3	Issued for Revised First Submission	2023-01-10
2	Issued for CUP Coordination	2022-12-13
1	Issued for First Submission	2022-09-30
No.	Description	Date

Revision

City Approval Stamp



**NAK** design strategies  
 1285 WELLINGTON STREET W. OTTAWA, ON K1Y 3A8 CANADA  
 T 613.237.2345 F 613.237.6423 NAKDESIGNSTRATEGIES.COM

Project

Conservancy East  
 Phase 2B

Title  
 SOIL VOLUME CALCULATIONS

Date MAY 2024 Sheet  
 Scale N.T.S.  
 Drawn NM  
 Checked SE  
 Job No. 22-004

D3