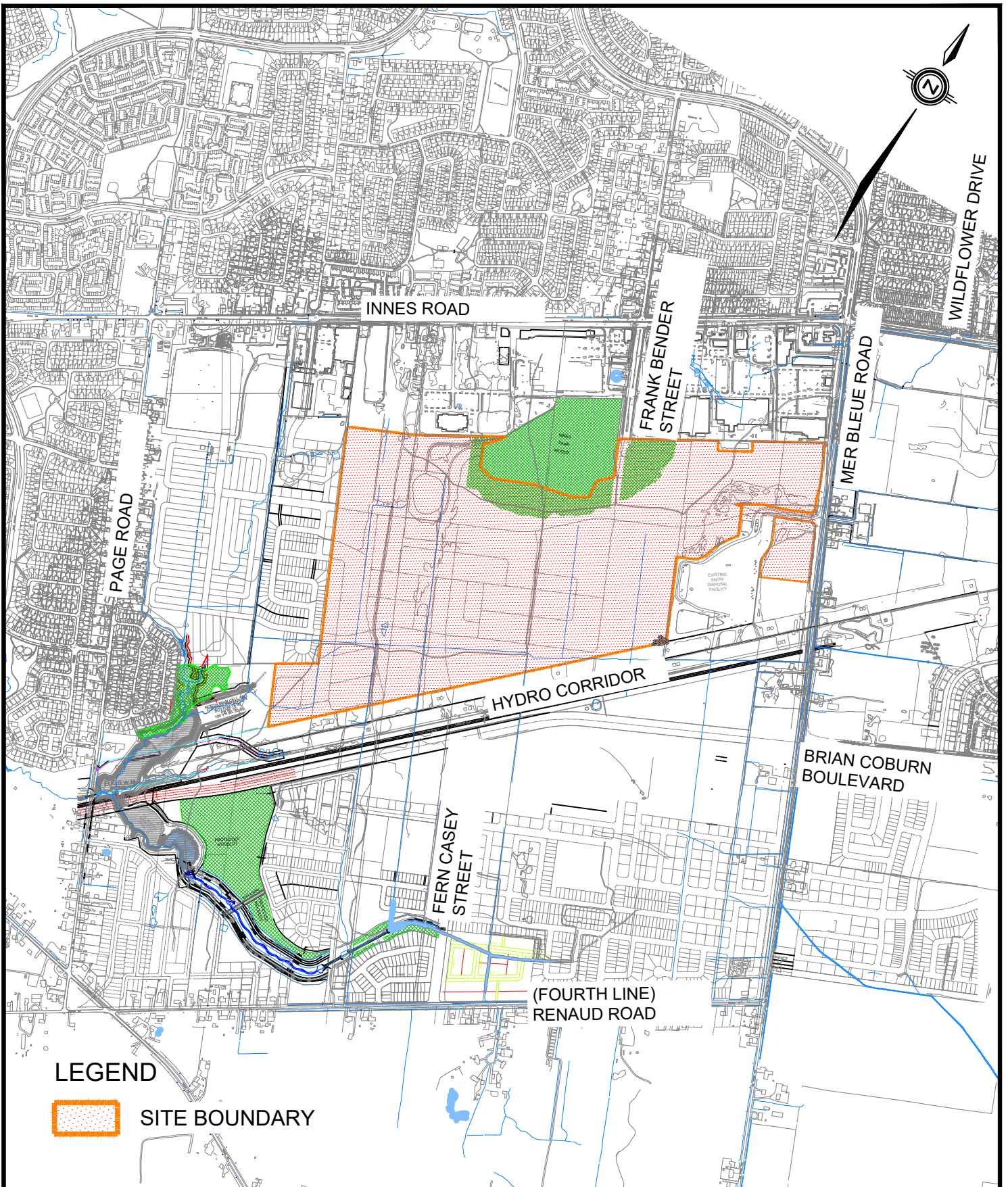




Figures & Drawings



LEGEND

 **SITE BOUNDARY**

TRAILSEDGE PHASE 5

SITE LOCATION

DATE: JUNE 2026

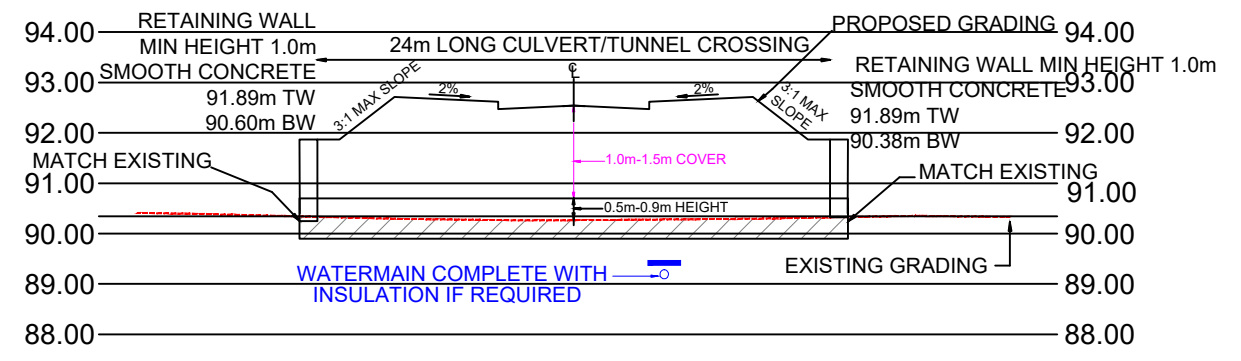
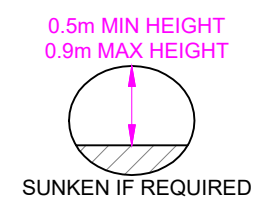
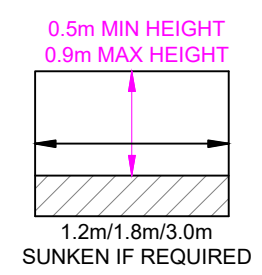
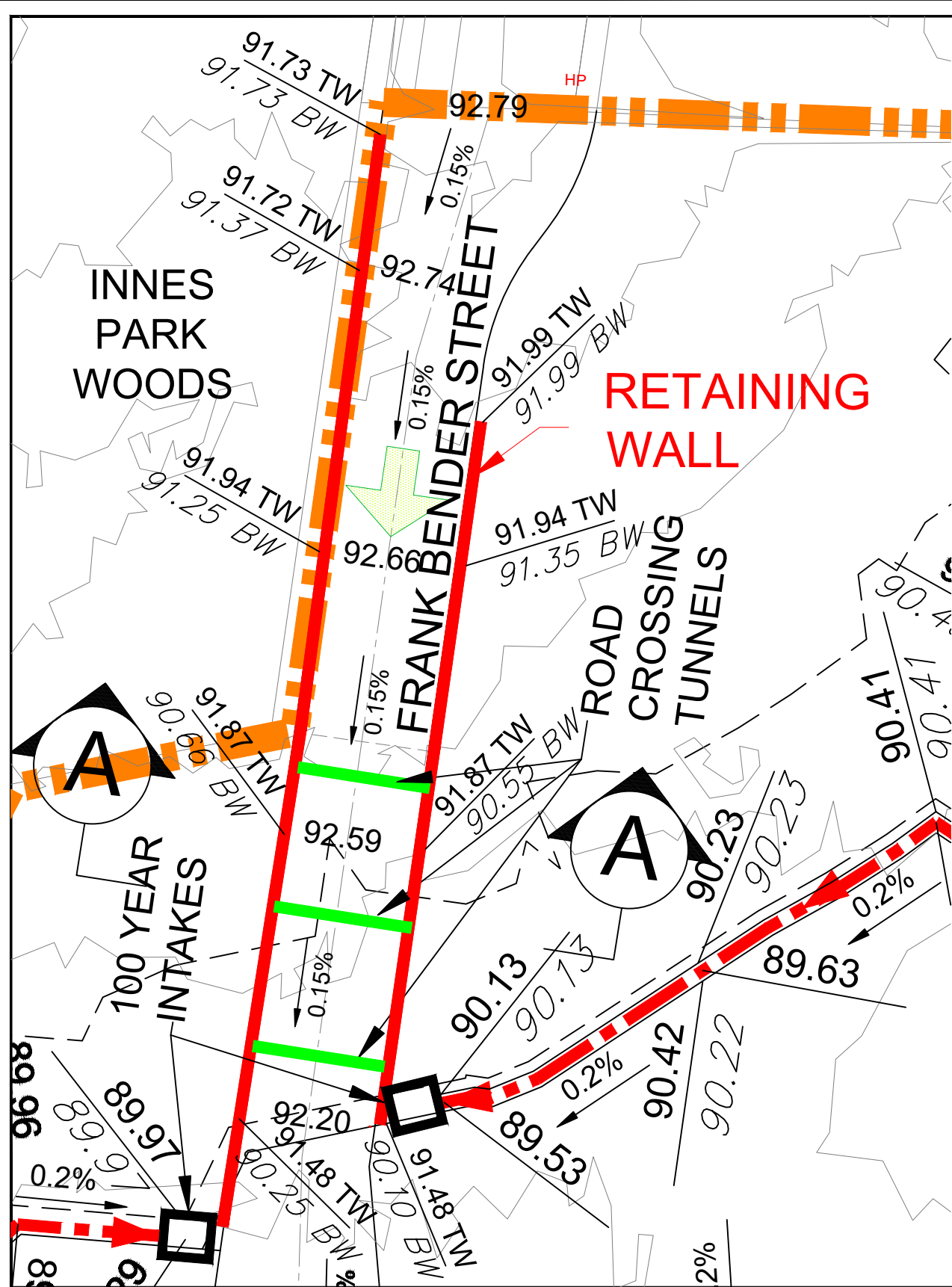
SCALE: 1:15,000

PROJECT No.: 20-1195

FIGURE: 1



120 Iber Road, Unit 203
 Stittsville, ON K2S 1E9
 TEL: (613) 836-0856
 FAX: (613) 836-7183
 www.DSEL.ca



LEGEND

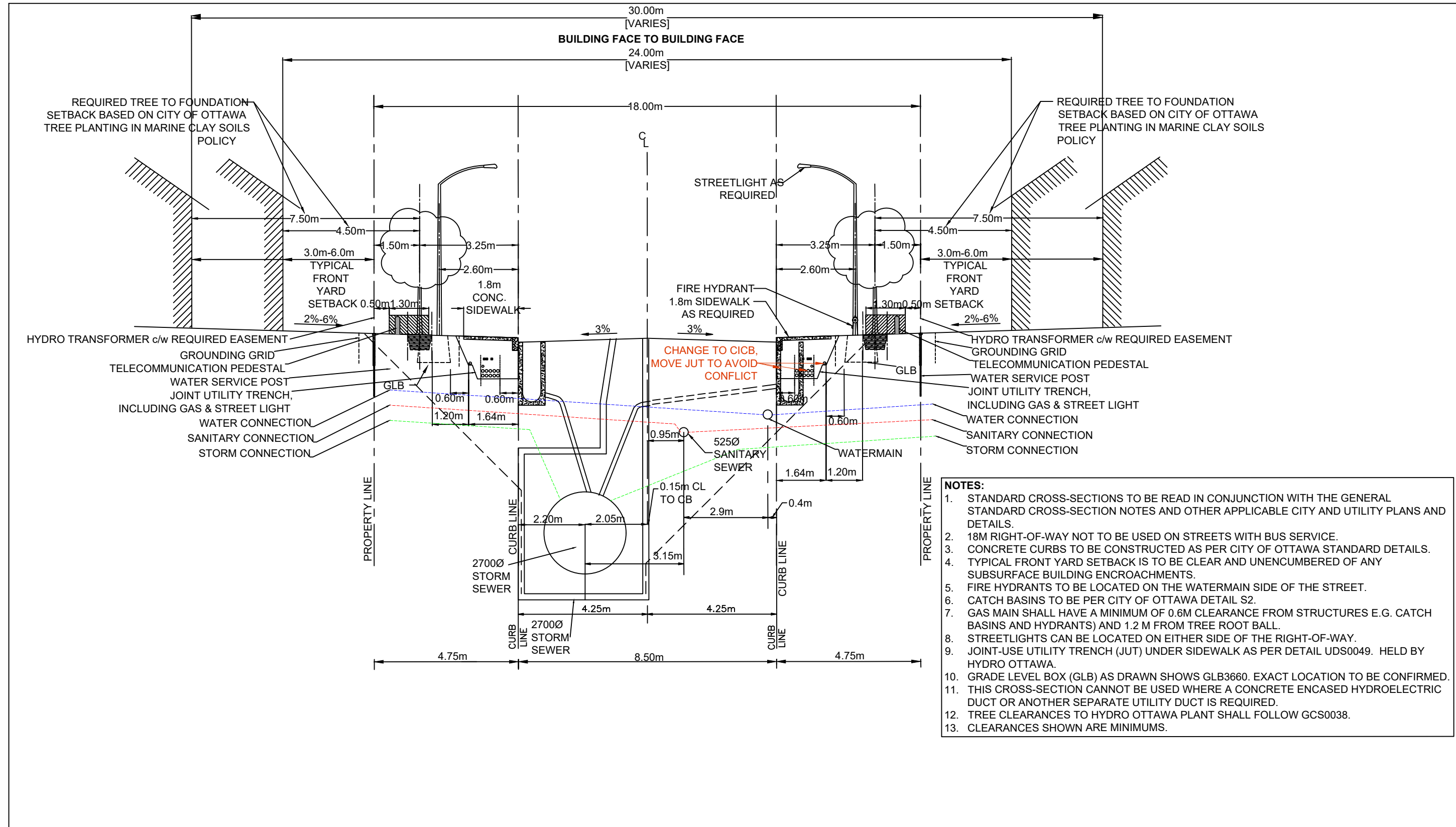
- ROAD CROSSING/TUNNEL
- SITE BOUNDARY
- PROPOSED ELEVATION
- PROPOSED ELEVATION
- EXISTING ELEVATION
- EXISTING CONTOUR ELEVATION
- STORM OVERLAND FLOW ARROW



120 Iber Road, Unit 103
Stittsville, ON K2S 1E9
TEL: (613) 836-0856
FAX: (613) 836-7183
www.DSEL.ca

**TRAILSEDGE PHASE 5
TYPICAL SNAKE CROSSING**

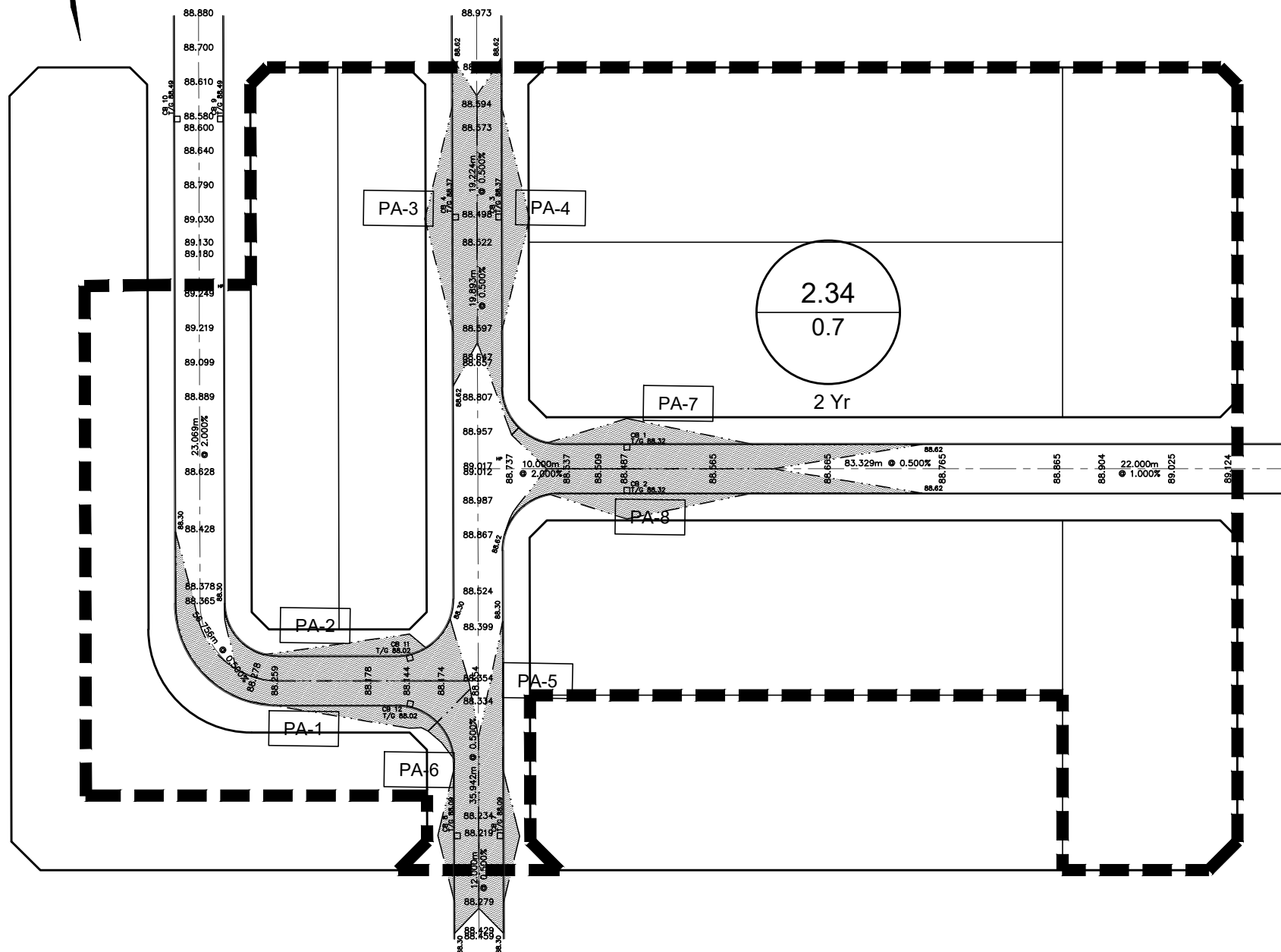
DATE:	JUNE 2026
SCALE:	1:1000
PROJECT No.:	20-1195
FIGURE	2



120 Iber Road, Unit 103
 Stittsville, ON K2S 1E9
 TEL: (613) 836-0856
 FAX: (613) 836-7183
 www.DSEL.ca

**TRAILSEDGE PHASE 5
 18.0m ROW SECTION**

DATE:	JUNE 2026
SCALE:	N.T.S.
PROJECT No.:	20-1195
FIGURE	3



PONDING VOLUME TABLE

AREA NUMBER	SPILL ELEVATION (m)	GUTTER ELEVATION (m)	MAXIMUM STATIC PONDING DEPTH (m)	MAXIMUM STATIC PONDING AREA (m ²)	MAXIMUM STATIC PONDING VOLUME (m ³)	Volume (round down to 1 decimal) (m ³)	
PA-1	88.30	88.02	0.28	328.98	30.70	30.7	
PA-2	88.30	88.02	0.28	260.60	24.32	24.3	
PA-3	88.62	88.33	0.29	309.08	29.88	29.8	
PA-4	88.62	88.33	0.29	323.10	31.23	31.2	
PA-5	88.30	88.09	0.21	212.24	14.86	14.8	
PA-6	88.30	88.09	0.21	215.43	15.08	15.0	
PA-7	88.62	88.32	0.30	322.80	32.28	32.2	
PA-8	88.62	88.32	0.30	317.87	31.79	31.7	
					Sum of Vol=	210.14	m3
					Total Area =	2.34	Ha
					Vol/Area=	89.80	m3/Ha

CALCULATIONS:

DRAINAGE AREA = 2.34 Ha

TOTAL PONDING VOLUME = 210.14 m³

PONDING VOL/Ha = 89.80 m³/Ha

LEGEND:

--- STORM TRIB DRAINAGE AREA

PONDING AREA

PONDING AREA ID

103.45 PROPOSED ELEVATION



120 Iber Road, Unit 103
Stittsville, ON K2S 1E9
TEL: (613) 836-0856
FAX: (613) 836-7183
www.DSEL.ca

**TRAILSEDGE PHASE 5
PONDING VOLUME PER Ha**

PROJECT No.: 20-1195

SCALE: 1:1000

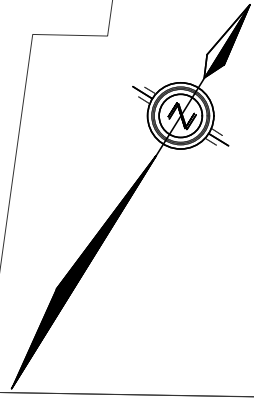
DATE: JUNE 2026

FIGURE: 4

NOTE:

TOTAL PONDING VOLUMES AND SITE AREA
INFORMATION FROM PROJECT 16-881 DRAWING
72-100 YEAR STATIC PONDING AREA AND ICD
PLAN.

INNES ROAD



TOTAL PONDING VOLUME: 3620 m³
SITE AREA: 20.93 Ha
VOLUME PER Ha: 172.96 m³/Ha

PAGE ROAD

JARGEAU ROAD

REFLECTION STREET

STREET 3


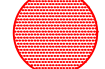
BEAUGENCY STREET

STREET 3

STREET 2

Low Density
Multi-Block
1.38 Ha
(3.40 Ac)

LEGEND

-  AREA OF DETAILED PONDING PER Ha ANALYSIS
-  DETAILED PONDING AREA



120 Iber Road, Unit 103
Stittsville, Ontario, K2S 1E9
Tel. (613) 836-0856
Fax. (613) 836-7183
www.DSEL.ca

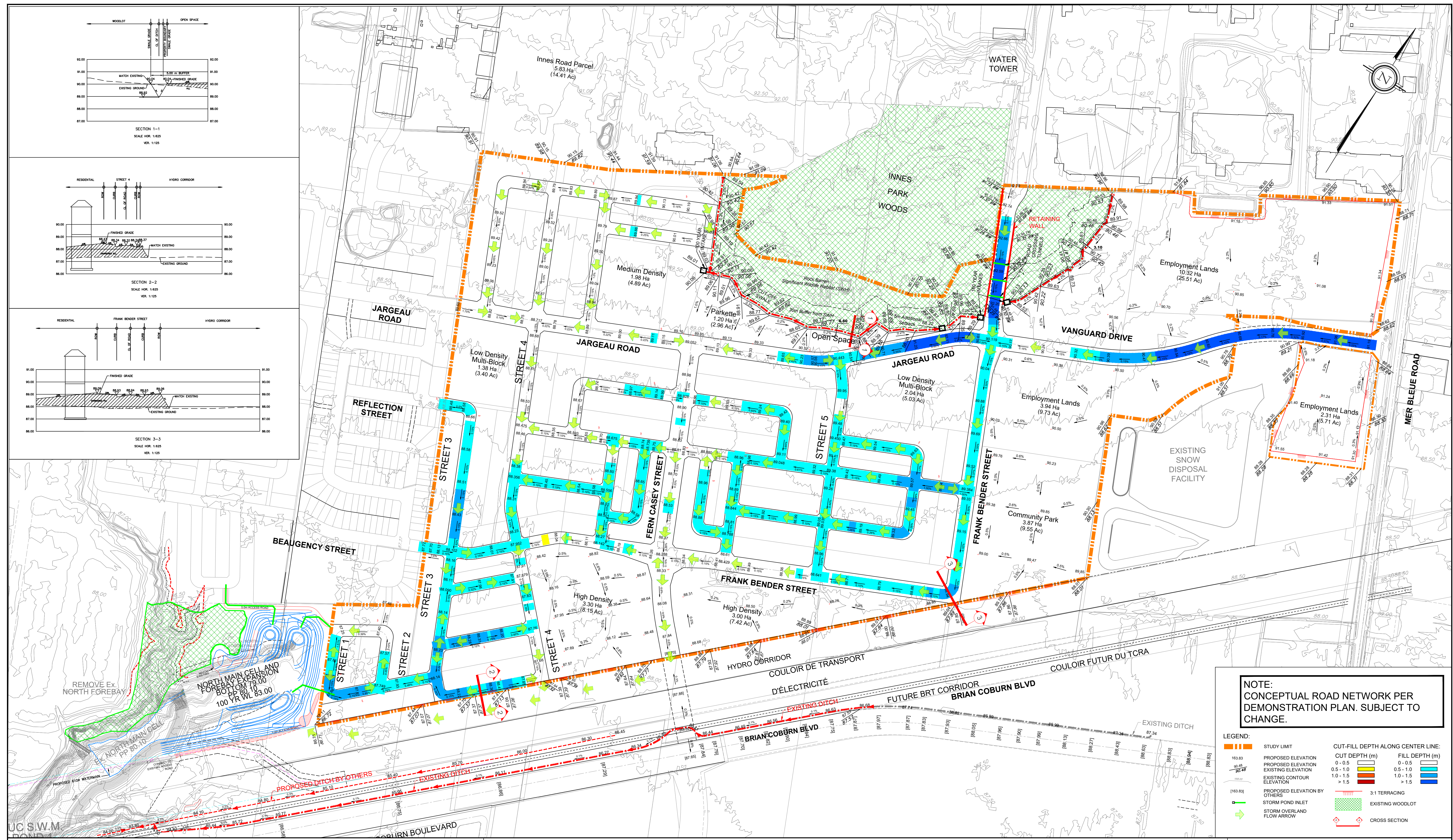
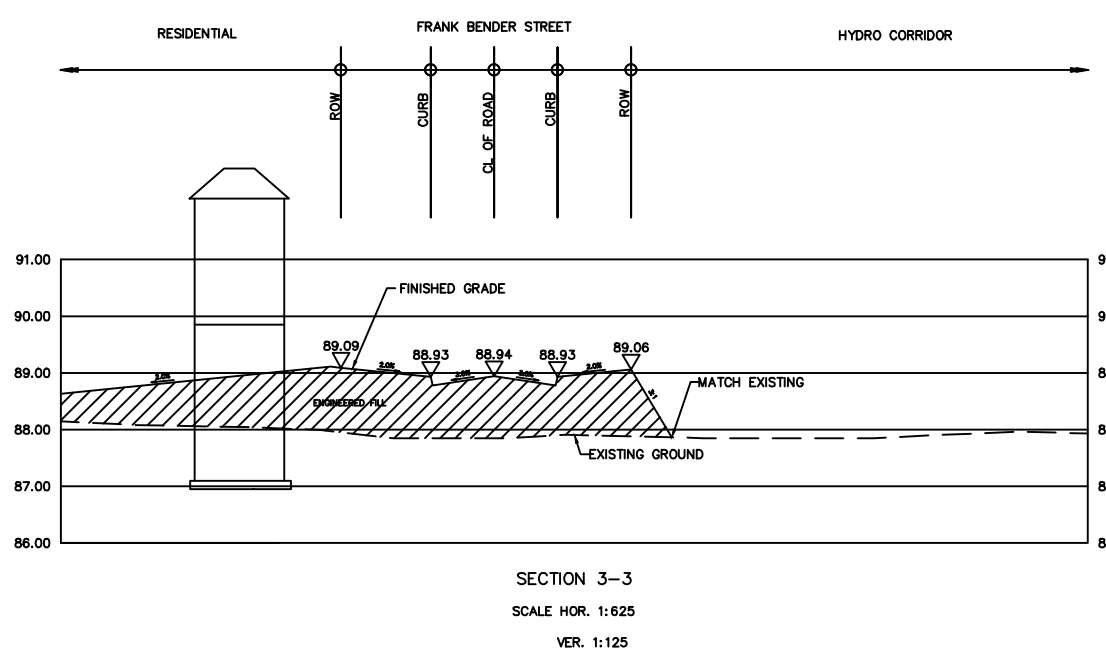
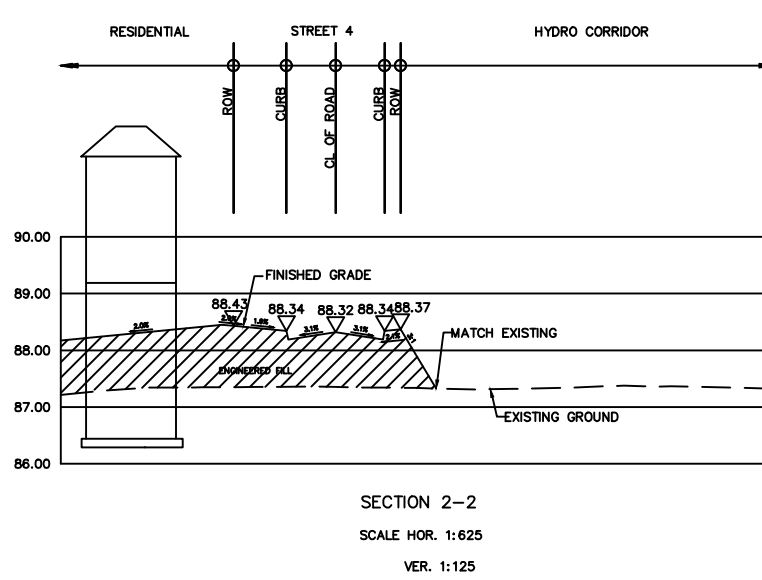
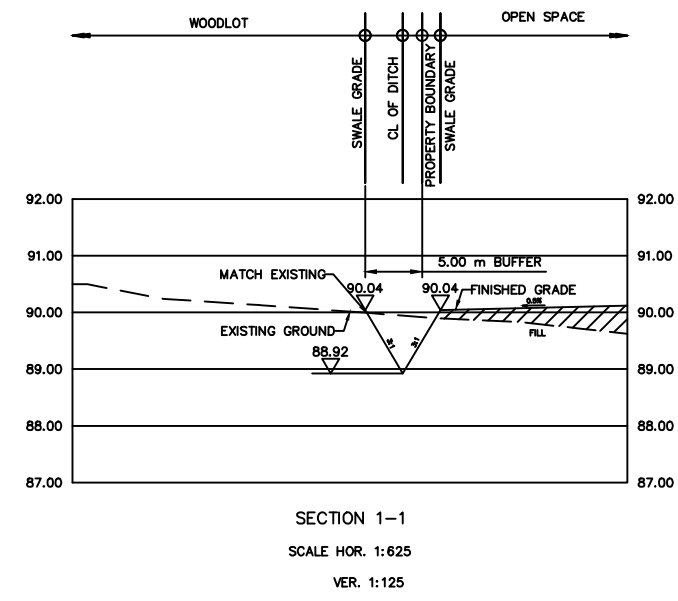
ORLEANS VILLAGE SURFACE STORAGE AREA

PROJECT No.: 20-1195

DATE: JUNE 2026

SCALE: NTS

FIGURE: 5



NOTE:
CONCEPTUAL ROAD NETWORK PER
DEMONSTRATION PLAN. SUBJECT TO
CHANGE.

LEGEND:

	STUDY LIMIT		CUT-FILL DEPTH ALONG CENTER LINE:
	PROPOSED ELEVATION		CUT DEPTH (m)
	PROPOSED ELEVATION		FILL DEPTH (m)
	EXISTING CONTOUR ELEVATION		0 - 0.5
	PROPOSED ELEVATION BY OTHERS		0.5 - 1.0
	STORM POND INLET		1.0 - 1.5
	STORM OVERLAND FLOW ARROW		1.5 - 2.0
	EXISTING WOODLOT		> 2.0
	CROSS SECTION		3:1 TERRACING

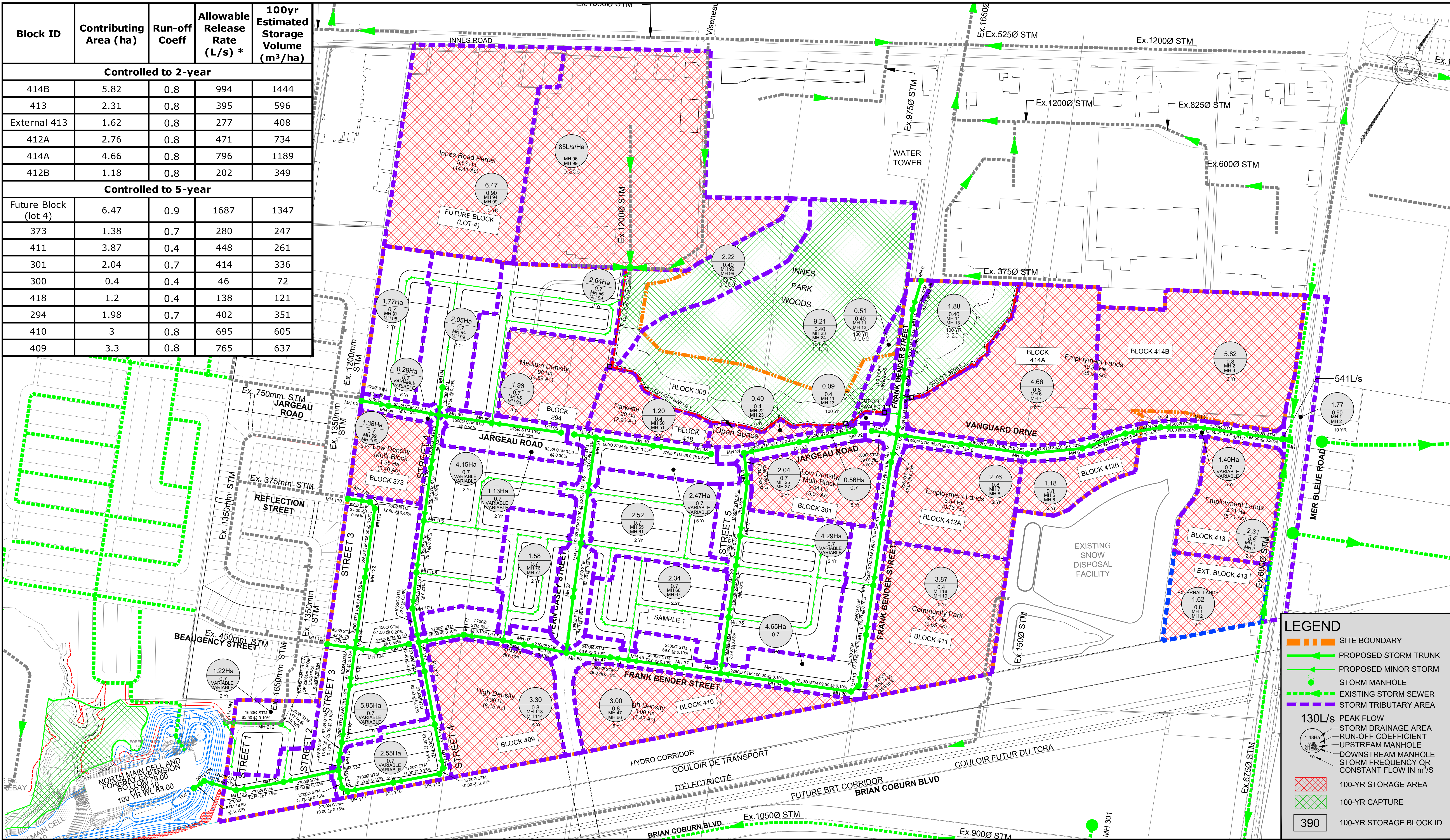


120 Iber Road, Unit 103
Stittsville, ON K2S 1E9
Tel. (613) 836-0856
Fax. (613) 836-7183
www.DSEL.ca

**TRAILSEDGE PHASE 5
GRADING PLAN**

PROJECT No. : 20-1195
SCALE 1:2500
DATE: MAY 2026
DRAWING No. 1

Block ID	Contributing Area (ha)	Run-off Coeff	Allowable Release Rate (L/s) *	100yr Estimated Storage Volume (m ³ /ha)
Controlled to 2-year				
414B	5.82	0.8	994	1444
413	2.31	0.8	395	596
External 413	1.62	0.8	277	408
412A	2.76	0.8	471	734
414A	4.66	0.8	796	1189
412B	1.18	0.8	202	349
Controlled to 5-year				
Future Block (lot 4)	6.47	0.9	1687	1347
373	1.38	0.7	280	247
411	3.87	0.4	448	261
301	2.04	0.7	414	336
300	0.4	0.4	46	72
418	1.2	0.4	138	121
294	1.98	0.7	402	351
410	3	0.8	695	605
409	3.3	0.8	765	637



LEGEND

- SITE BOUNDARY
- PROPOSED STORM TRUNK
- PROPOSED MINOR STORM
- STORM MANHOLE
- EXISTING STORM SEWER
- STORM TRIBUTARY AREA
- 130L/s PEAK FLOW
- 0.8 STORM DRAINAGE AREA
- 0.9 RUN-OFF COEFFICIENT
- 2000 UPSTREAM MANHOLE
- 100 DOWNSTREAM MANHOLE
- 100 STORM FREQUENCY OR CONSTANT FLOW IN m³/S
- 390 100-YR STORAGE AREA
- 390 100-YR CAPTURE
- 390 100-YR STORAGE BLOCK ID

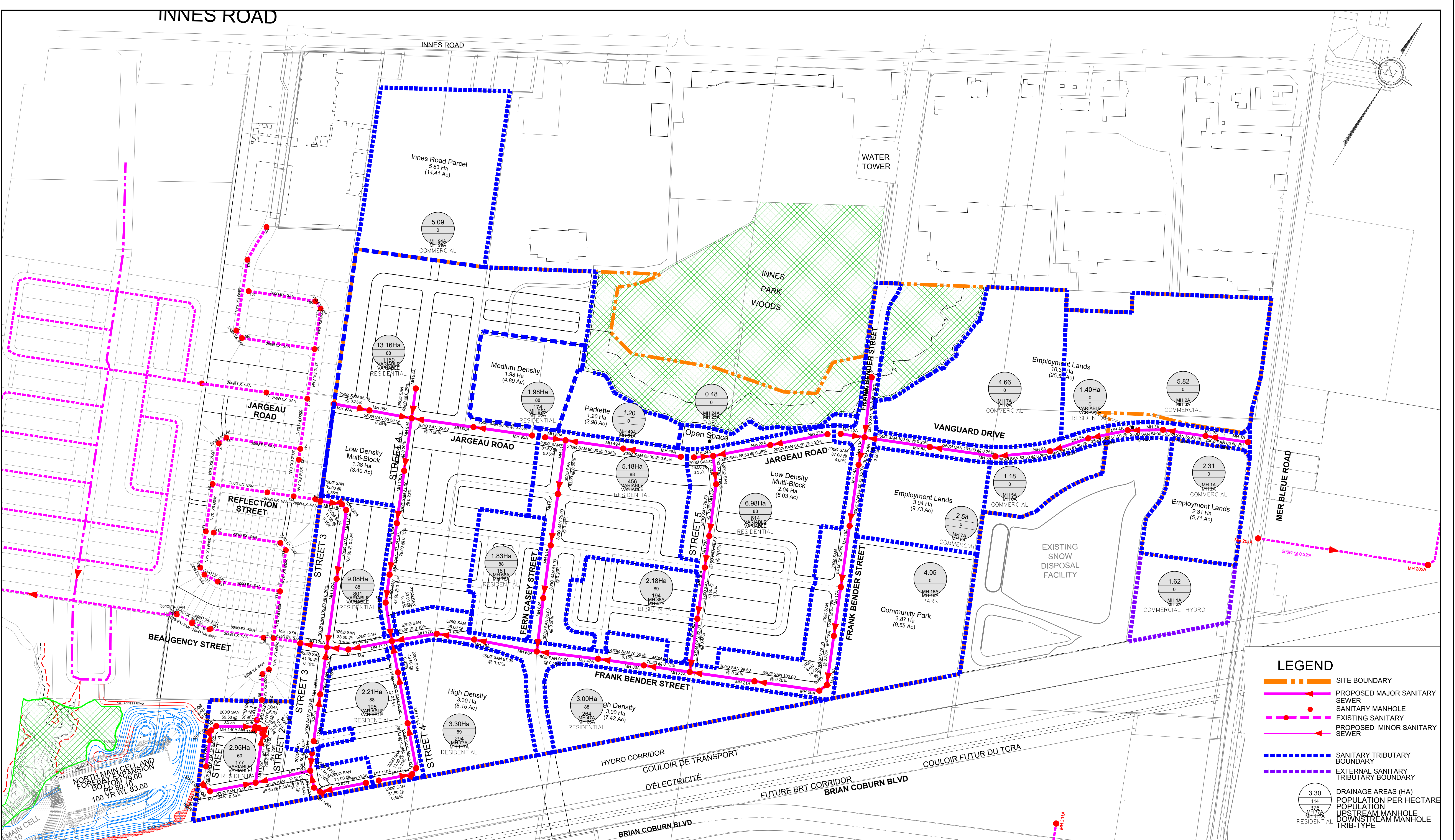


120 Iber Road, Unit 103
 Stittsville, ON K2S 1E9
 Tel. (613) 836-0856
 Fax. (613) 836-7183
 www.DSEL.ca

**TRAILSEDGE PHASE 5
 STORM SERVICING PLAN**

PROJECT No. : 20-1195
 SCALE 1:2500
 DATE: MAY 2026
 DRAWING No. 2

INNES ROAD



LEGEND

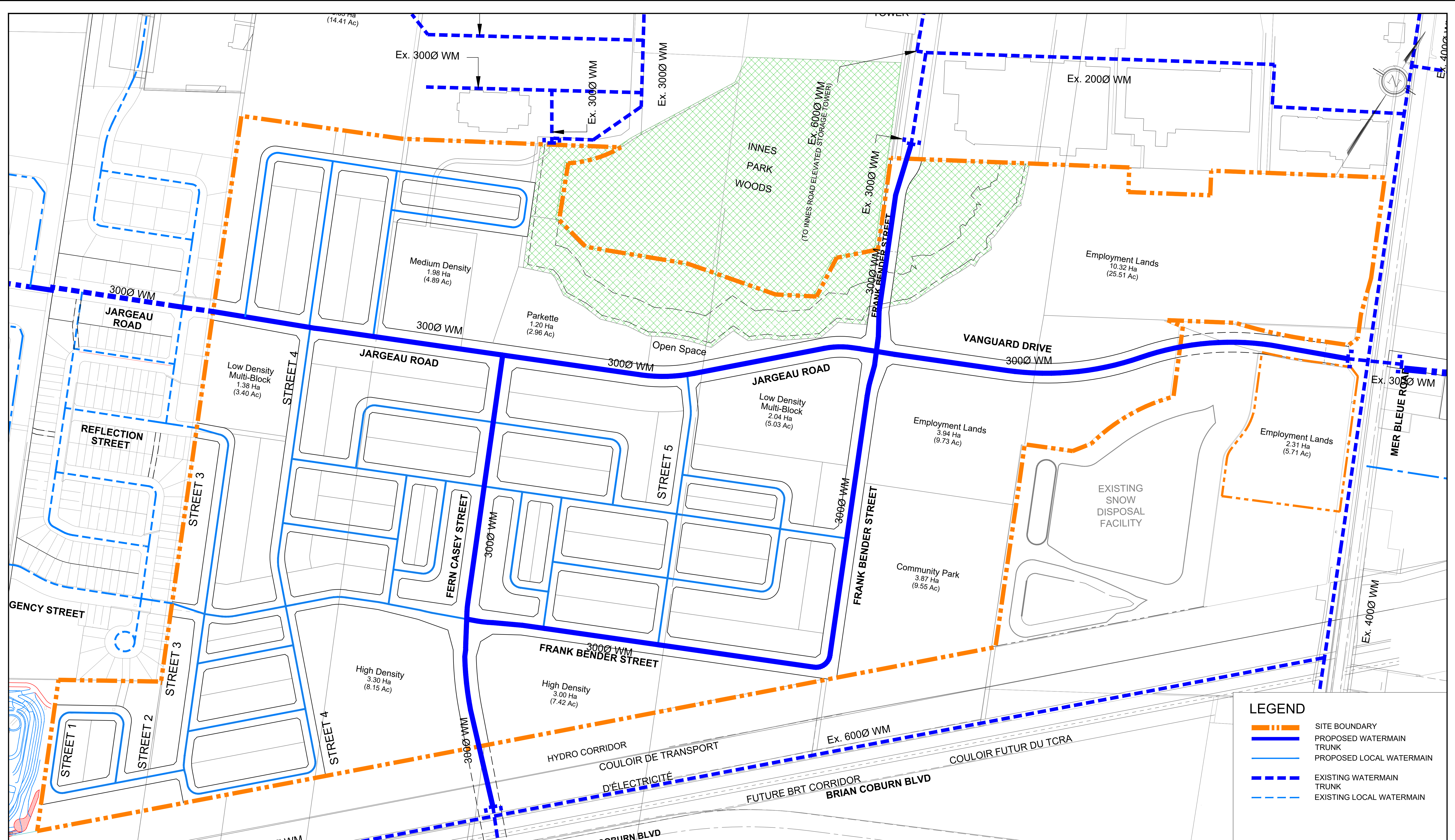
- — — — — SITE BOUNDARY
- — — — — PROPOSED MAJOR SANITARY SEWER
- SANITARY MANHOLE
- — — — — EXISTING SANITARY
- — — — — PROPOSED MINOR SANITARY SEWER
- — — — — SANITARY TRIBUTARY BOUNDARY
- — — — — EXTERNAL SANITARY TRIBUTARY BOUNDARY
- 3.30
114
MH 77A
RESIDENTIAL DRAINAGE AREAS (HA)
POPULATION PER HECTARE
UPSTREAM MANHOLE
DOWNSTREAM MANHOLE
TRIB-TYPE



120 Iber Road, Unit 103
Stittsville, ON K2S 1E9
Tel. (613) 836-0856
Fax. (613) 836-7183
www.DSEL.ca

TRAILSEDGE PHASE 5
SANITARY SERVICING PLAN

PROJECT No. : 20-1195
SCALE 1:2500
DATE: MAY 2026
DRAWING No. 3



LEGEND

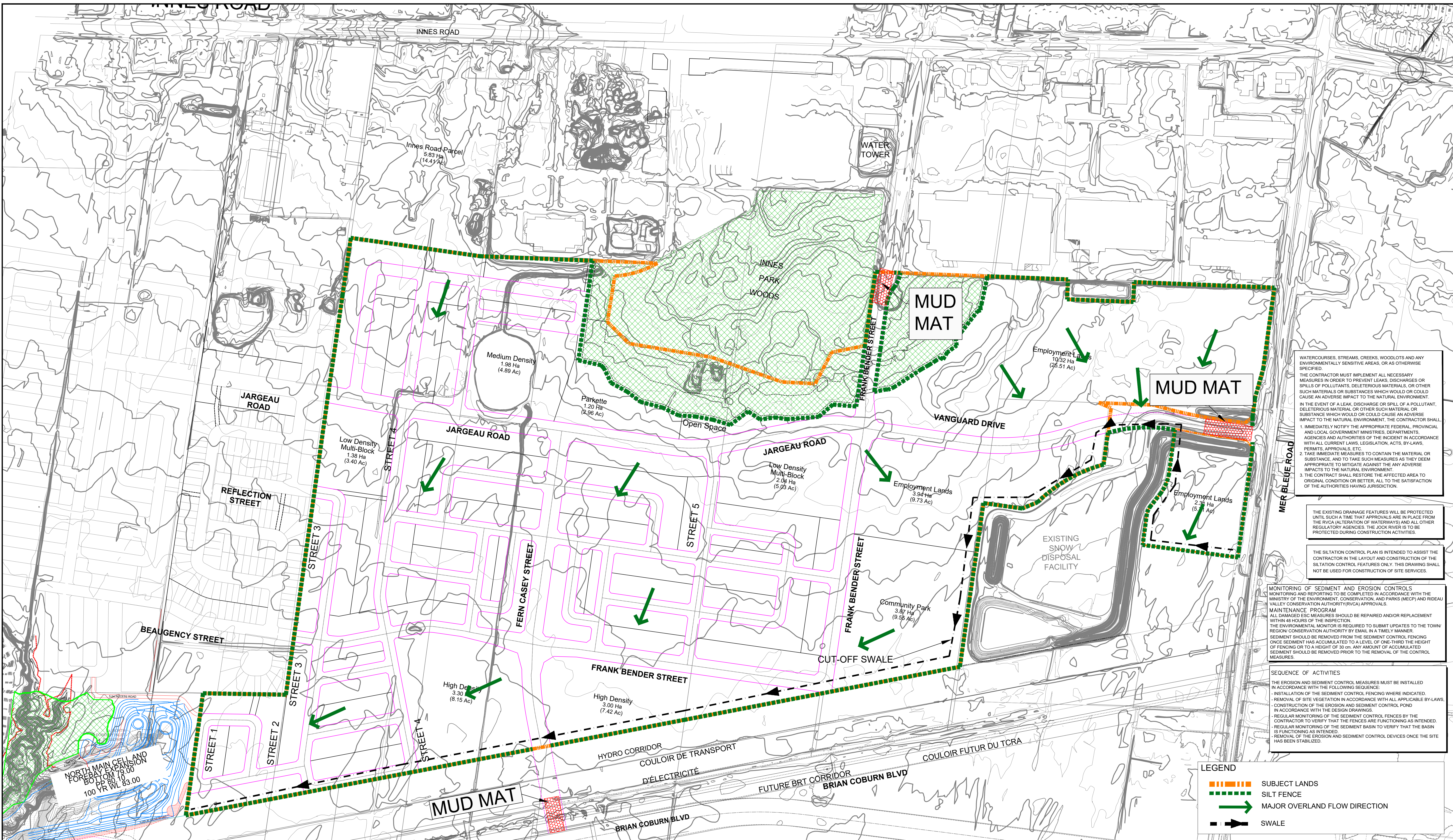
	SITE BOUNDARY
	PROPOSED WATERMAIN TRUNK
	PROPOSED LOCAL WATERMAIN
	EXISTING WATERMAIN TRUNK
	EXISTING LOCAL WATERMAIN



120 Iber Road, Unit 103
 Stittsville, ON K2S 1E9
 Tel. (613) 836-0856
 Fax. (613) 836-7183
 www.DSEL.ca

**TRAILSEDGE PHASE 5
 WATERMAIN SERVICING PLAN**

PROJECT No. :	20-1195
SCALE	1:2000
DATE:	MAY 2026
DRAWING No.	4



WATERCOURSES, STREAMS, CREEKS, WOODLOTS AND ANY ENVIRONMENTALLY SENSITIVE AREAS, OR AS OTHERWISE SPECIFIED.

THE CONTRACTOR MUST IMPLEMENT ALL NECESSARY MEASURES IN ORDER TO PREVENT LEAKS, DISCHARGES OR SPILLS OF POLLUTANTS, DELETERIOUS MATERIALS, OR OTHER SUCH MATERIALS OR SUBSTANCES WHICH WOULD OR COULD CAUSE AN ADVERSE IMPACT TO THE NATURAL ENVIRONMENT.

IN THE EVENT OF A LEAK, DISCHARGE OR SPILL OF A POLLUTANT, DELETERIOUS MATERIAL OR OTHER SUCH MATERIAL, OR SUBSTANCE WHICH WOULD OR COULD CAUSE AN ADVERSE IMPACT TO THE NATURAL ENVIRONMENT, THE CONTRACTOR SHALL:

1. IMMEDIATELY NOTIFY THE APPROPRIATE FEDERAL, PROVINCIAL AND LOCAL GOVERNMENT MINISTRIES, DEPARTMENTS, AGENCIES AND AUTHORITIES OF THE INCIDENT IN ACCORDANCE WITH ALL CURRENT LAWS, LEGISLATION, ACTS, BY-LAWS, PERMITS, APPROVALS, ETC.
2. TAKE IMMEDIATE MEASURES TO CONTAIN THE MATERIAL OR SUBSTANCE, AND TO TAKE SUCH MEASURES AS THEY DEEM APPROPRIATE TO MITIGATE AGAINST THE ANY ADVERSE IMPACTS TO THE NATURAL ENVIRONMENT.
3. THE CONTRACT SHALL RESTORE THE AFFECTED AREA TO ORIGINAL CONDITION OR BETTER, ALL TO THE SATISFACTION OF THE AUTHORITIES HAVING JURISDICTION.

THE EXISTING DRAINAGE FEATURES WILL BE PROTECTED UNTIL SUCH A TIME THAT APPROVALS ARE IN PLACE FROM THE RVCA (ALTERATION OF WATERWAYS) AND ALL OTHER REGULATORY AGENCIES. THE JOCK RIVER IS TO BE PROTECTED DURING CONSTRUCTION ACTIVITIES.

THE SILTATION CONTROL PLAN IS INTENDED TO ASSIST THE CONTRACTOR IN THE LAYOUT AND CONSTRUCTION OF THE SILTATION CONTROL FEATURES ONLY. THIS DRAWING SHALL NOT BE USED FOR CONSTRUCTION OF SITE SERVICES.

MONITORING OF SEDIMENT AND EROSION CONTROLS MONITORING AND REPORTING TO BE COMPLETED IN ACCORDANCE WITH THE MINISTRY OF THE ENVIRONMENT, CONSERVATION AND PARKS (MECP) AND RIDEAU VALLEY CONSERVATION AUTHORITY (RVCA) APPROVALS.

MAINTENANCE PROGRAM

ALL DAMAGED ESC MEASURES SHOULD BE REPAIRED AND/OR REPLACEMENT WITHIN 48 HOURS OF THE INSPECTION.

THE ENVIRONMENTAL MONITOR IS REQUIRED TO SUBMIT UPDATES TO THE TOWN/REGIONAL CONSERVATION AUTHORITY BY EMAIL IN A TIMELY MANNER.

SEDIMENT SHOULD BE REMOVED FROM THE SEDIMENT CONTROL FENCING ONCE SEDIMENT HAS ACCUMULATED TO A LEVEL OF ONE-THIRD THE HEIGHT OF FENCING OR TO A HEIGHT OF 30 cm. ANY AMOUNT OF ACCUMULATED SEDIMENT SHOULD BE REMOVED PRIOR TO THE REMOVAL OF THE CONTROL MEASURES.

SEQUENCE OF ACTIVITIES

THE EROSION AND SEDIMENT CONTROL MEASURES MUST BE INSTALLED IN ACCORDANCE WITH THE FOLLOWING SEQUENCE:

- INSTALLATION OF THE SEDIMENT CONTROL FENCING WHERE INDICATED.
- REMOVAL OF SITE VEGETATION IN ACCORDANCE WITH ALL APPLICABLE BY-LAWS.
- CONSTRUCTION OF THE EROSION AND SEDIMENT CONTROL POND IN ACCORDANCE WITH THE DESIGN DRAWINGS.
- REGULAR MONITORING OF THE SEDIMENT CONTROL FENCES BY THE CONTRACTOR TO VERIFY THAT THE FENCES ARE FUNCTIONING AS INTENDED.
- REGULAR MONITORING OF THE SEDIMENT BASIN TO VERIFY THAT THE BASIN IS FUNCTIONING AS INTENDED.
- REMOVAL OF THE EROSION AND SEDIMENT CONTROL DEVICES ONCE THE SITE HAS BEEN STABILIZED.

LEGEND	
	SUBJECT LANDS
	SILT FENCE
	MAJOR OVERLAND FLOW DIRECTION
	SWALE



120 Iber Road, Unit 103
Stittsville, ON K2S 1E9
Tel. (613) 836-0856
Fax. (613) 836-7183
www.DSEL.ca

TRAILSEDGE PHASE 5 EROSION AND SEDIMENT CONTROL PLAN

PROJECT No. :	20-1195
SCALE	1:2500
DATE:	MAY 2026
DRAWING No.	6