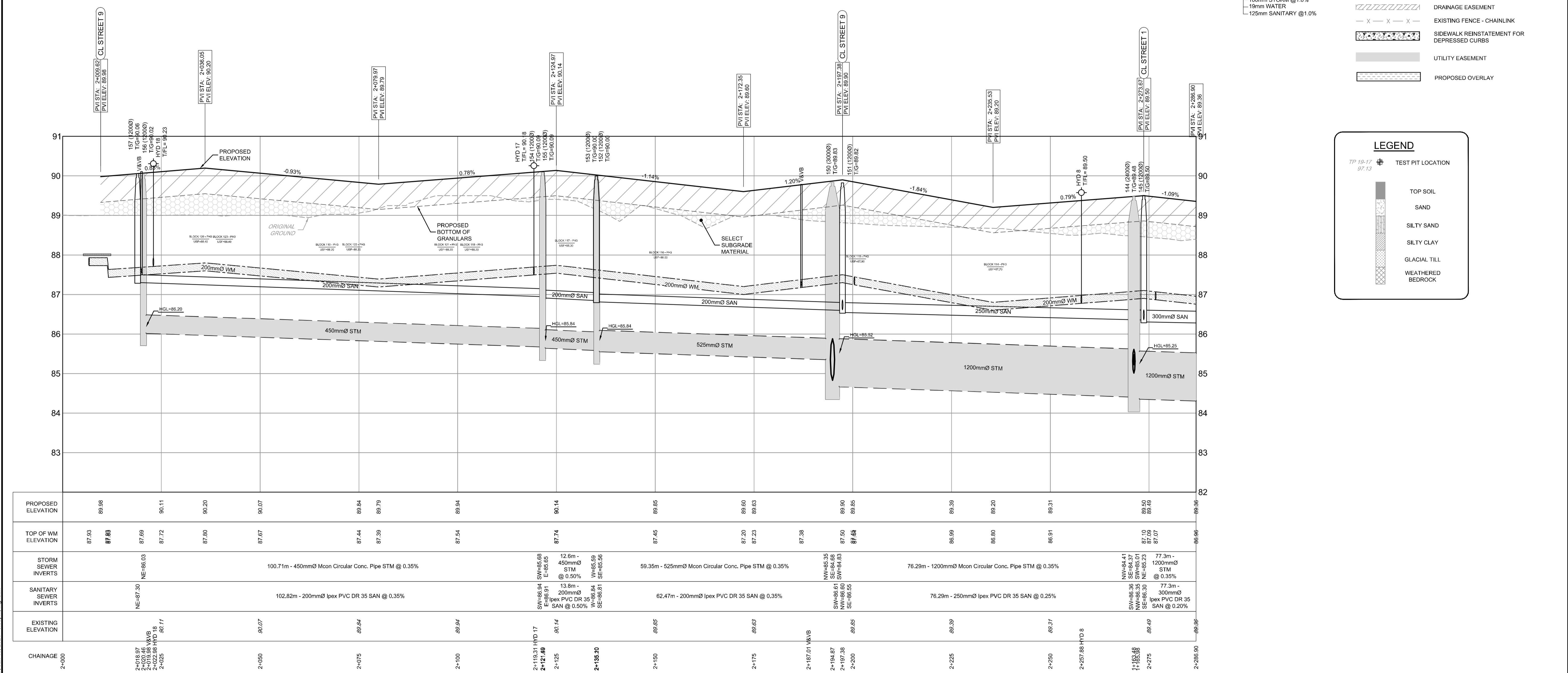


SEE DRAWING NO. 118224-PR9 SEE DRAWING NO. 118224-PR7 SEE DRAWING NO. 118224-PR7 SEE DRAWING NO. 118224-PR8 SEE DRAWING NO. 118224-PR6



NOTE: THE POSITION OF ALL POLE LINES, CONDUITS, WATERMANS, SEWERS AND OTHER UNDERGROUND AND OVERGROUND UTILITIES AND STRUCTURES IS NOT NECESSARILY SHOWN ON THE CONTRACT DRAWINGS, AND WHERE SHOWN, THE ACCURACY OF THE POSITION OF SUCH UTILITIES AND STRUCTURES IS NOT GUARANTEED. BEFORE STARTING WORK, DETERMINE THE EXACT LOCATION OF ALL SUCH UTILITIES AND STRUCTURES AND ASSUME ALL LIABILITY FOR DAMAGE TO THEM.

PRELIMINARY

SCALE: 1 : 500

DESIGN: DJC
CHECKED: BCS
DRAWN: DJC
CHECKED: BCS
APPROVED: BHB

FOR REVIEW ONLY

LICENSED PROFESSIONAL ENGINEER
B. H. BAHIA
100164647
June 19, 2021
PROVINCE OF ONTARIO

NOVATECH
Engineers, Planners & Landscape Architects
Suite 200, 240 Michael Cowpland Drive
Ottawa, Ontario, Canada K2M 1P6
Telephone: (613) 254-9643
Facsimile: (613) 254-9867
Website: www.novatech-eng.com

LOCATION: CITY OF OTTAWA THE COMMONS
DRAWING NAME: PLAN AND PROFILE STREET 2 STATION 2+000 TO 2+287

PROJECT NO.: 118224-00
REV: REV # 2
DRAWING NO.: 118224-PR7

C:\temp\p\publish_6152118224-PR.dwg, PR7, Jun 16, 2021 - 5:56pm, mphauri