

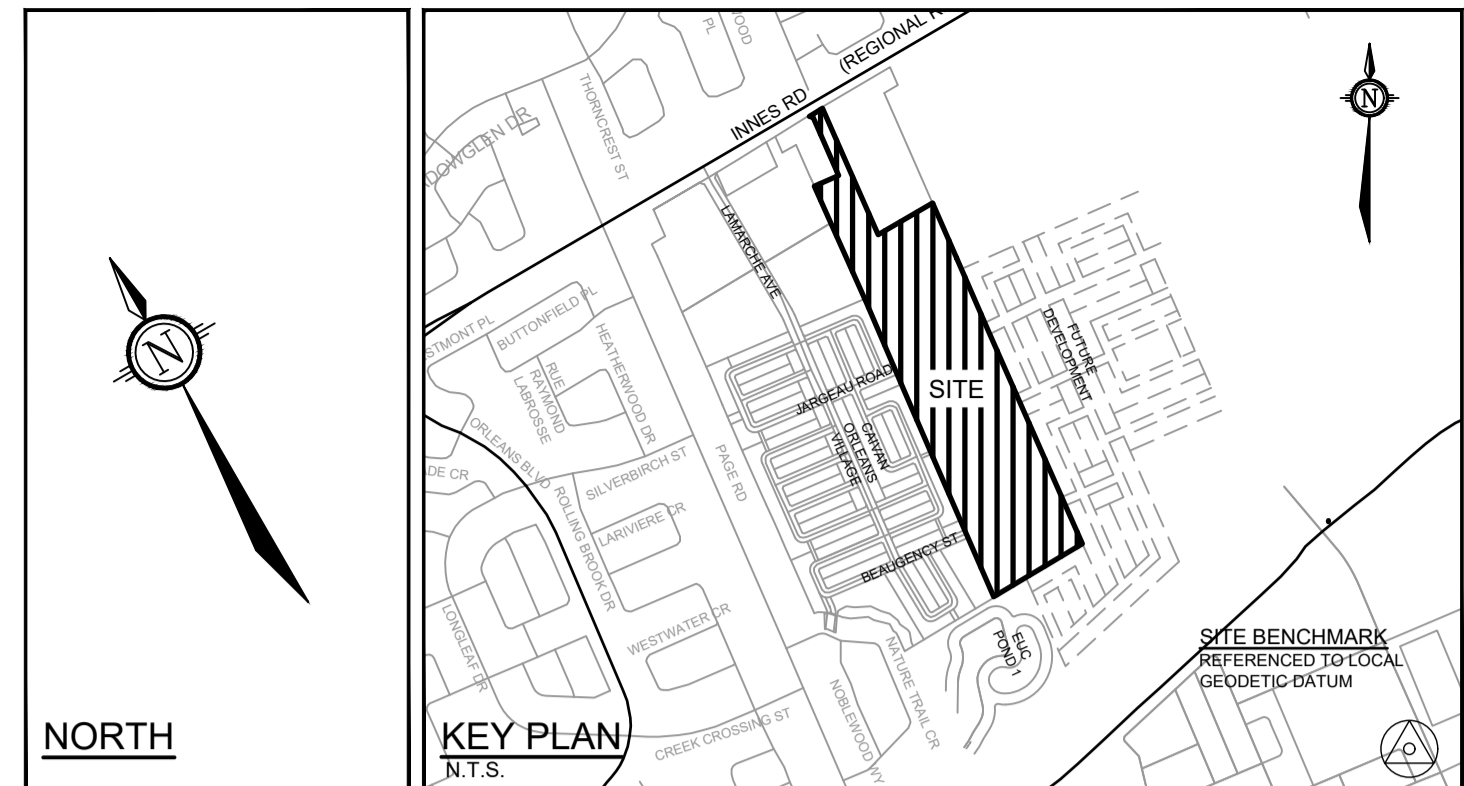
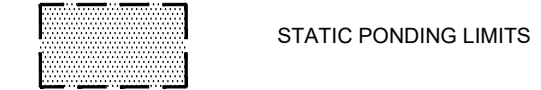
**LEGEND**

- 120.46  
120.46(S)  
120.46(T/G)  
120.46(VPI)  
87.97M  
65.99M  
120.46
- PROPOSED ELEVATION
- EXISTING ELEVATION
- PROPOSED SWALE ELEVATION
- PROPOSED TOP OF GRATE ELEVATION
- PROPOSED VERTICAL POINT OF INTERSECTION ELEVATION
- PROPOSED TOP OF NOISE WALL ELEVATION
- PROPOSED BOTTOM OF NOISE WALL ELEVATION
- PROPOSED ELEVATION BY OTHERS (CAVAN ORLEANS VILLAGE)

- 3.2%
- 127.55
- 120.46
- FF=
- TF=
- USF=
- CLOWD
- PRV

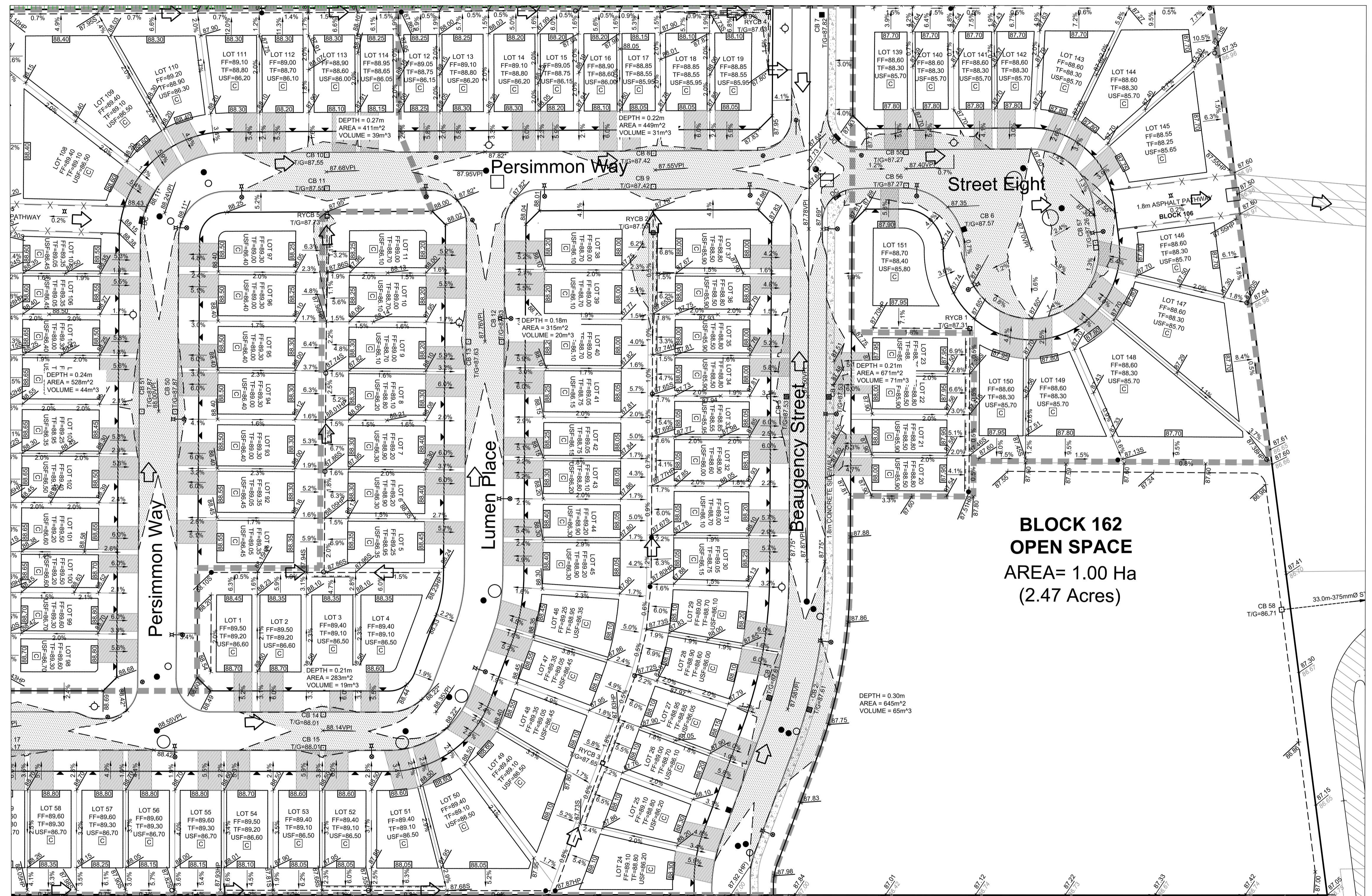
- GRADE AND DIRECTION
- PROPOSED TERRACE ELEVATION
- SPILL ELEVATION
- FINISHED FLOOR ELEVATION
- TOP OF FOUNDATION ELEVATION
- UNDERSIDE OF FOOTING ELEVATION
- UNIT BASEMENT STYLE (CONVENTIONAL / LOOKOUT / WALKOUT)
- PRESSURE REDUCING VALVE

- EMERGENCY OVERLAND FLOW
- PROPOSED TERRACING
- PROPOSED SWALE
- PROPOSED STORM MH
- PROPOSED LANDSCAPE TEE CATCH BASIN
- PROPOSED LANDSCAPE ELBOW CATCH BASIN
- PROPOSED REAR YARD CATCH BASIN MANHOLE
- PROPOSED REAR YARD CATCH BASIN
- PROPOSED ROAD CATCHBASIN
- EXISTING TREE TO REMAIN IF POSSIBLE



NORTH

KEY PLAN  
N.T.S.



**BLOCK 162  
OPEN SPACE  
AREA= 1.00 Ha  
(2.47 Acres)**

**ROADWAY CATCHBASIN TABLE (PHASE 1A)**

CB No.	STATION	T/G ELEVATION	INVERT	ICD DIA.	SIZE
1*	7+021	87.82	86.32	127mm	600 x 600 CB
2**	7+047.99	87.80	86.10	83mm	600 x 600 CB
3**	7+048.08	87.80	86.10	102mm	600 x 600 CB
4**	7+117.08	87.53	86.03	94mm	600 x 600 CB
5**	7+117.08	87.53	86.03	102mm	600 x 600 CB
7*	7+203.11	87.82	86.32	--mm	600 x 600 CB
8	6+238.28	87.44	85.94	102mm	600 x 600 CB
9	6+238.19	87.43	85.93	83mm	600 x 600 CB
12	4+421.50	87.63	86.13	127mm	600 x 600 CB
13	4+421.50	87.78	86.28	108mm	600 x 600 CB
14	4+310	88.01	86.51	83mm	600 x 600 CB
15	4+310	88.02	86.52	102mm	600 x 600 CB
16	4+235	88.17	86.67	83mm	600 x 600 CB
17	4+235	88.18	86.68	102mm	600 x 600 CB

\* SOLID COVER  
\*\* CURB INLET

**ROADWAY CATCHBASIN TABLE (PHASE 2B)**

CB No.	STATION	T/G ELEVATION	INVERT	ICD DIA.	SIZE
10	6+165.12	87.57	86.07	127mm	600 x 600 CB
11	6+165.12	87.56	86.06	83mm	600 x 600 CB
22*	3+106.23	89.08	87.58	127mm	600 x 600 CB
44	3+135.44	88.92	87.42	102mm	600 x 600 CB
45	3+135.44	88.92	87.42	83mm	600 x 600 CB
46	5+063.76	88.88	87.38	102mm	600 x 600 CB
47	5+063.76	89.03	87.53	83mm	600 x 600 CB
48	5+129.30	88.37	86.87	102mm	600 x 600 CB
49	5+129.30	88.52	87.02	94mm	600 x 600 CB
50	6+080.50	87.87	86.37	108mm	600 x 600 CB
51	6+080.50	88.02	86.52	127mm	600 x 600 CB

\* SOLID COVER

**ROADWAY CATCHBASIN TABLE (PHASE 3B)**

CB No.	STATION	T/G ELEVATION	INVERT	ICD DIA.	SIZE
6*	8+077.65	87.62	86.12	152mm	600 x 600 CB
55	8+030	87.27	85.77	127mm	600 x 600 CB
56	8+030	87.27	85.77	127mm	600 x 600 CB
57****	8+069.57	87.26	85.76	108mm	600 x 600 CB

\*\*\*\* DUAL CATCHBASIN

**NOTE:**  
THE POSITION OF ALL POLE LINES, CONDUITS, WATERMANS, SEWERS AND OTHER UNDERGROUND AND OVERGROUND UTILITIES AND STRUCTURES IS NOT NECESSARILY SHOWN ON THE CONTRACT DRAWINGS, AND WHERE SHOWN, THE ACCURACY OF THE POSITION OF SUCH UTILITIES AND STRUCTURES IS NOT GUARANTEED. BEFORE STARTING WORK, DETERMINE THE EXACT LOCATION OF ALL SUCH UTILITIES AND STRUCTURES AND ASSUME ALL LIABILITY FOR DAMAGE TO THEM.

PRELIMINARY

No.	REVISION	DATE	BY
2.	REVISED AND REISSUED FOR REVIEW	NOV 26/21	BHB
1.	ISSUED FOR REVIEW	JUNE 18/21	BHB

SCALE

1:500

0 5 10 15 20

DESIGN	DJC
CHECKED	BCS
DRAWN	MFD
CHECKED	BCS
APPROVED	BHB

FOR REVIEW ONLY

NOVATECH

Engineers, Planners & Landscape Architects  
Suite 200, 240 Michael Cowpland Drive  
Ottawa, Ontario, Canada K2M 1P6

Telephone (613) 254-9643  
Facsimile (613) 254-5867  
Website www.novatech-eng.com

LOCATION CITY OF OTTAWA THE COMMONS	
DRAWING NAME <b>PONDING AND ICD PLAN</b>	
PROJECT No. 118224-00	REV # 2
DRAWING No. 118224-P-ICD3	

C:\temp\p\publish\_10348\118224-P-ICD.dwg, 118224-P-ICD3-A1, Nov 26, 2021, 3:47pm, bhead

#18535  
D07-16-19-007