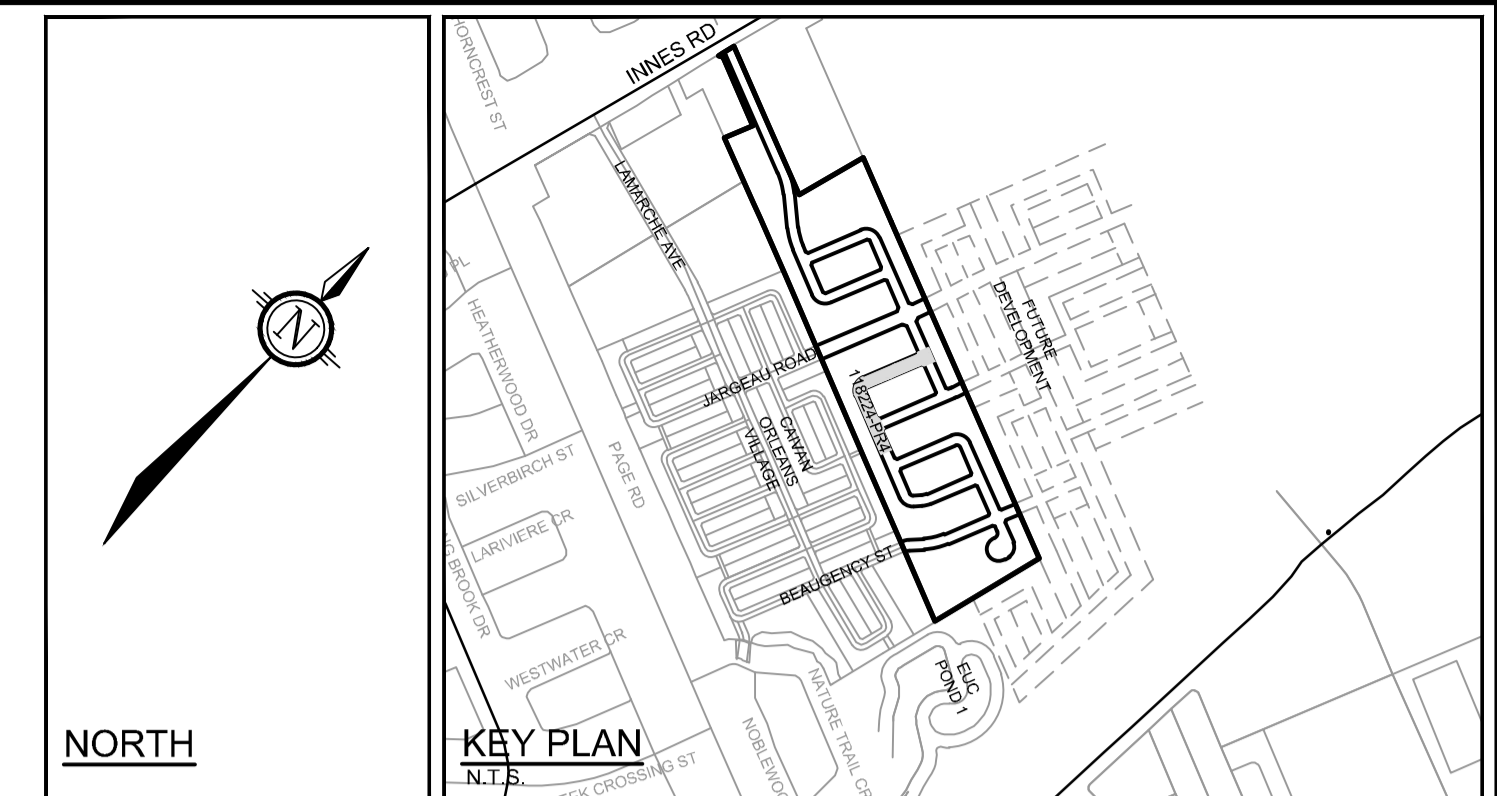
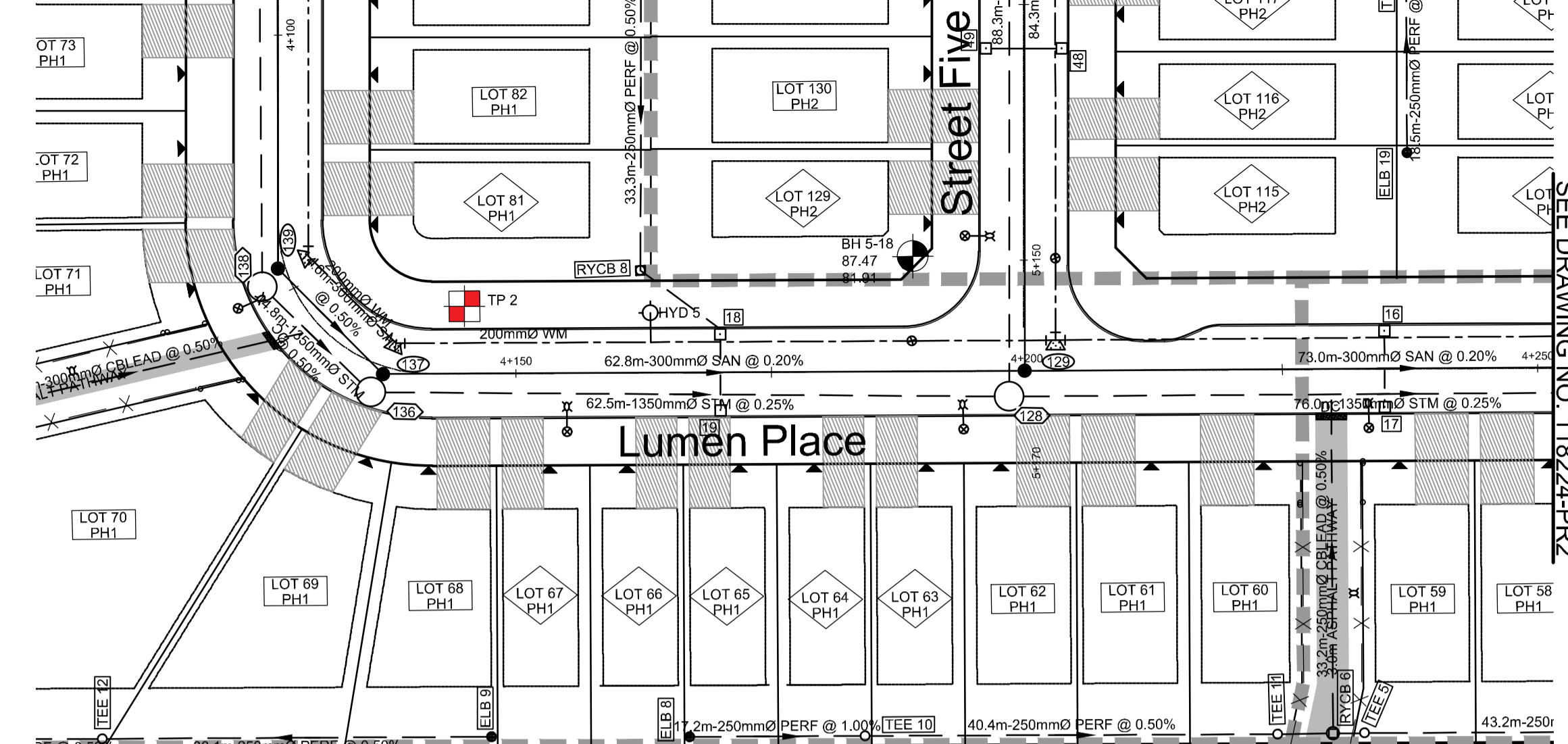
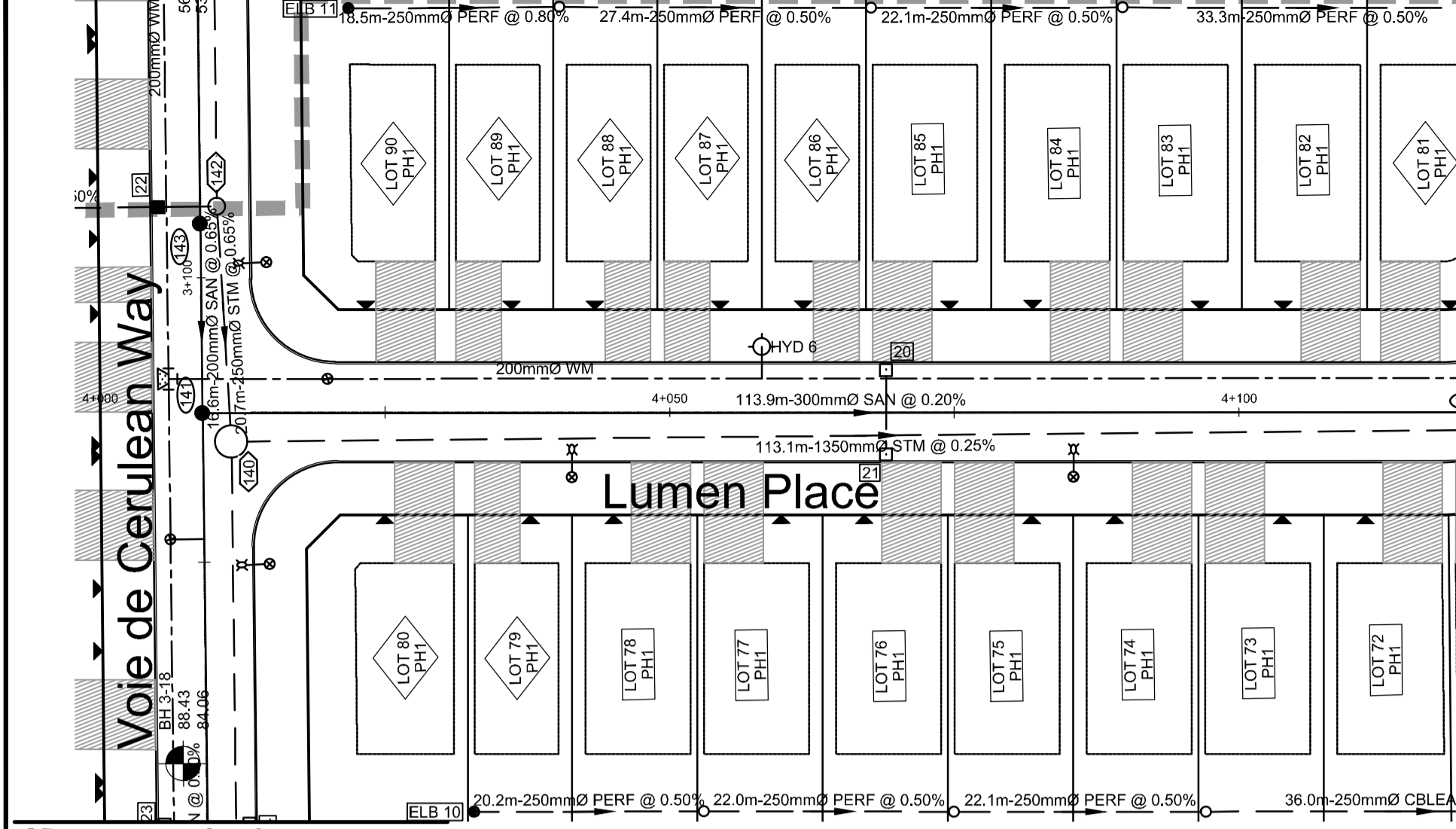


SEE DRAWING NO. 118224-PR5

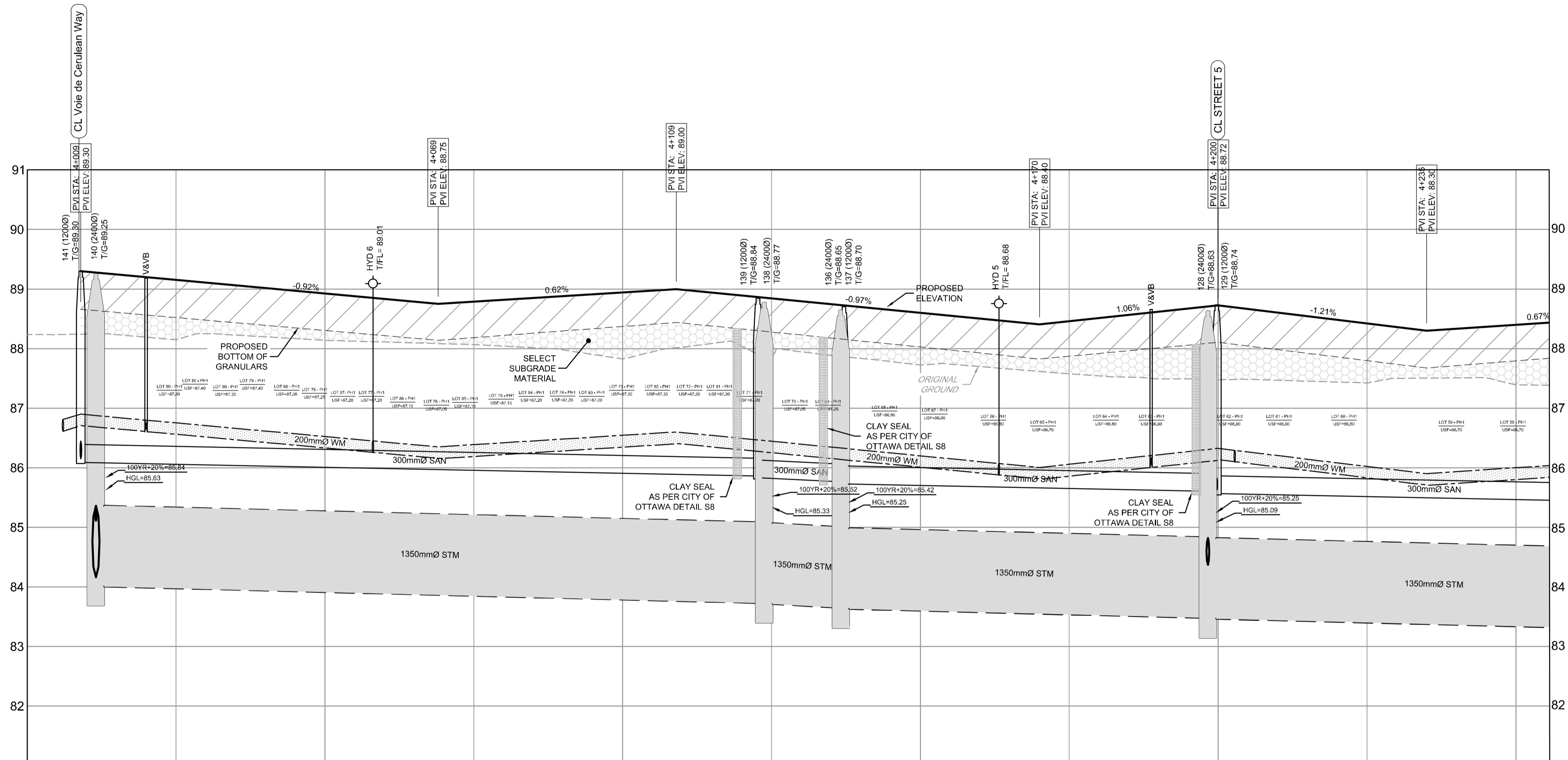
SEE DRAWING NO. 118224-PR4

SEE DRAWING NO. 118224-PR11



SEE DRAWING NO. 118224-PR5

- LEGEND**
- 200mm Ø WM: PROPOSED WATERMAIN
 - V&VB: PROPOSED VALVE LOCATION
 - HYD: PROPOSED HYDRANT CW VALVE & LEAD
 - T/F: PROPOSED TOP OF BOTTOM FLANGE
 - BEND: PROPOSED BEND AND THRUSTBLOCK
 - SERVICE CONNECTION STUB (SINGLE): PROPOSED BEND AND THRUSTBLOCK
 - PROPOSED SANITARY MH & SEWER
 - PROPOSED STORM MH & SEWER
 - LYCB: PROPOSED LANDSCAPE TEE CATCHBASIN & PERFORATED SUBDRAIN PER S29, S30, S31
 - RYCB: PROPOSED REAR YARD CATCHBASIN MANHOLE & LEAD
 - RYCB: PROPOSED REAR YARD CATCHBASIN & LEAD
 - CB: PROPOSED ROAD CATCHBASIN
 - EXISTING 1.8m CONCRETE SIDEWALK
 - DRAINAGE EASEMENT
 - EXISTING FENCE - CHAINLINK
 - SIDEWALK REINSTATEMENT FOR DEPRESSED CURBS
 - UTILITY EASEMENT
 - PROPOSED OVERLAY



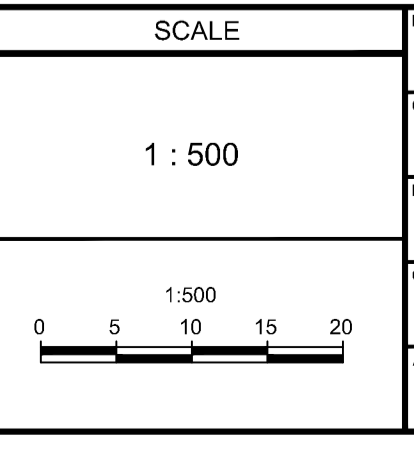
- LEGEND**
- BH 19.17, 91.92: BOREHOLE LOCATION
 - FILL
 - TOP SOIL
 - SAND
 - CLAYEY SILT
 - SILTY CLAY
 - GLACIAL TILL
 - WEATHERED BEDROCK

CHAINAGE	PROPOSED ELEVATION	TOP OF WM ELEVATION	STORM SEWER INVERTS	SANITARY SEWER INVERTS	EXISTING ELEVATION
4+000	89.30	86.81		NW=86.15 SW=86.09 SE=85.19	86.15
3+088.10 3+085.57	89.15	86.80			86.15
4+025	88.92	86.75			86.15
4+050	88.84	86.62	113.12m - 1350mm Ø Moon Circular Conc. Pipe STM @ 0.25%	113.87m - 300mm Ø Ipx PVC DR 35 SAN @ 0.20%	86.92
4+075	88.75	86.35			86.79
4+100	88.84	86.54			86.84
4+125	88.84	86.44	14.8m - 1350mm Ø STM @ 0.50%	14.6m - 300mm Ø Ipx PVC DR 35 SAN @ 0.50%	86.84
4+150	88.80	86.20	62.50m - 1350mm Ø Moon Circular Conc. Pipe STM @ 0.25%	62.77m - 300mm Ø Ipx PVC DR 35 SAN @ 0.20%	86.60
4+175	88.46	86.06			86.46
4+200	88.72	86.32			86.72
4+225	88.42	86.02	75.98m - 1350mm Ø Moon Circular Conc. Pipe STM @ 0.25%	72.97m - 300mm Ø Ipx PVC DR 35 SAN @ 0.20%	86.42
4+250	88.40	86.00			86.40

NOTE:
THE POSITION OF ALL POLE LINES, CONDUITS, WATERMANS, SEWERS AND OTHER UNDERGROUND AND OVERGROUND UTILITIES AND STRUCTURES IS NOT NECESSARILY SHOWN ON THE CONTRACT DRAWINGS, AND WHERE SHOWN, THE ACCURACY OF THE POSITION OF SUCH UTILITIES AND STRUCTURES IS NOT GUARANTEED. BEFORE STARTING WORK, DETERMINE THE EXACT LOCATION OF ALL SUCH UTILITIES AND STRUCTURES AND ASSUME ALL LIABILITY FOR DAMAGE TO THEM.

PRELIMINARY

No.	REVISION	DATE	BY
3.	REVISED AND REISSUED FOR REVIEW	NOV 26/21	BHB
2.	ISSUED FOR REVIEW	JUN 18/21	BHB
1.	ISSUED FOR DISCUSSION	MAR 5/21	BHB



DESIGN: DJC
CHECKED: BCS
DRAWN: DJC
CHECKED: BCS
APPROVED: BHB

FOR REVIEW ONLY

PROFESSIONAL ENGINEER
B. H. BAHIA
100164647
NOV 26, 2021
PROVINCE OF ONTARIO

NOVATECH
Engineers, Planners & Landscape Architects
Suite 200, 240 Michael Cowpland Drive
Ottawa, Ontario, Canada K2M 1P6

Telephone: (613) 254-9643
Facsimile: (613) 254-9867
Website: www.novatech-eng.com

LOCATION: CITY OF OTTAWA THE COMMONS
DRAWING NAME: PLAN AND PROFILE PLACE DE LUMEN PLACE STATION 4+000 TO 4+250

PROJECT No.: 118224-00
REV: REV # 3
DRAWING No.: 118224-PR4

M:\2018\118224\CAD\Design\118224-PR.dwg, PR4, Nov 24, 2021, 8:20pm, ccoffey

D07-16-19-0027 #18535