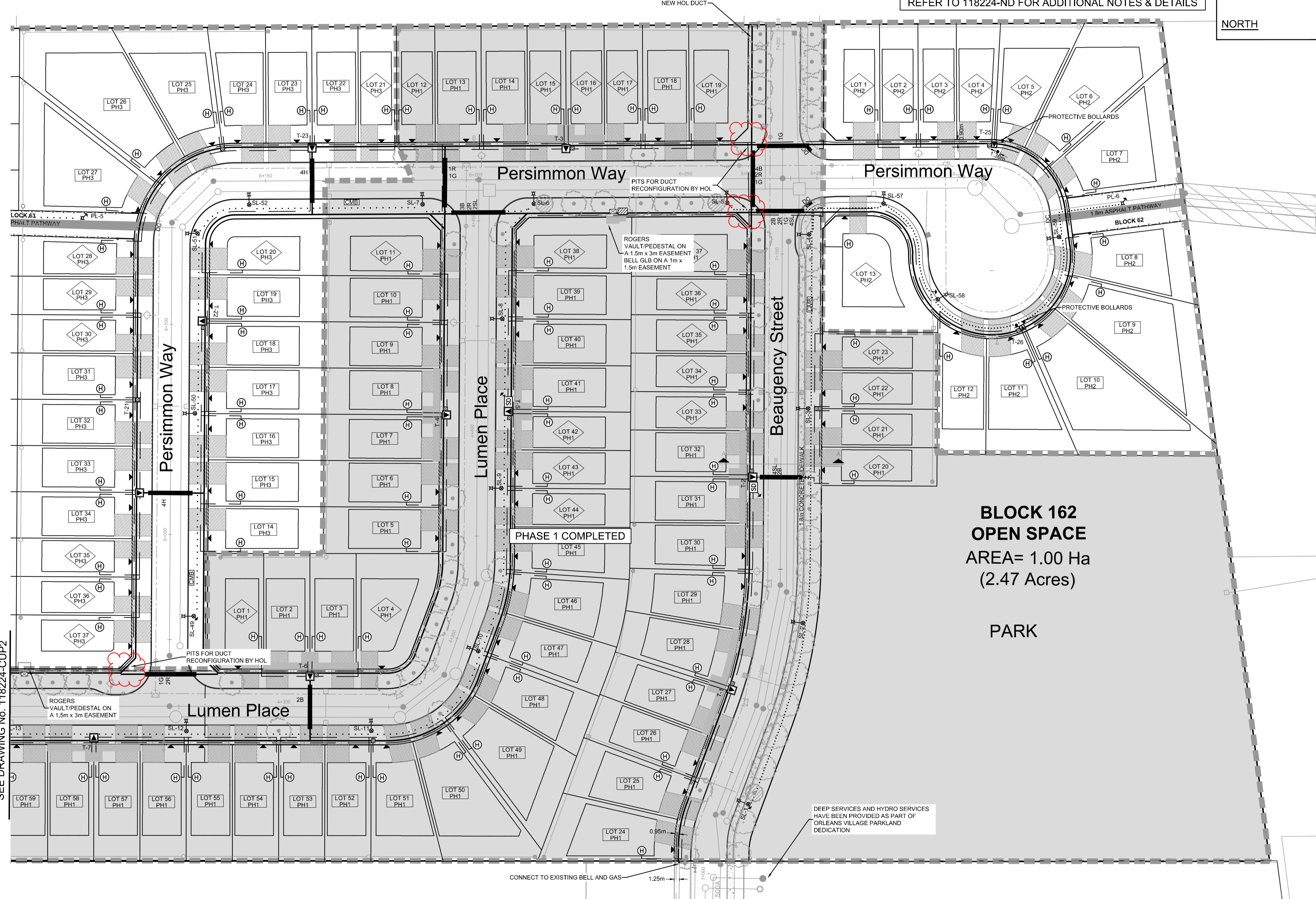
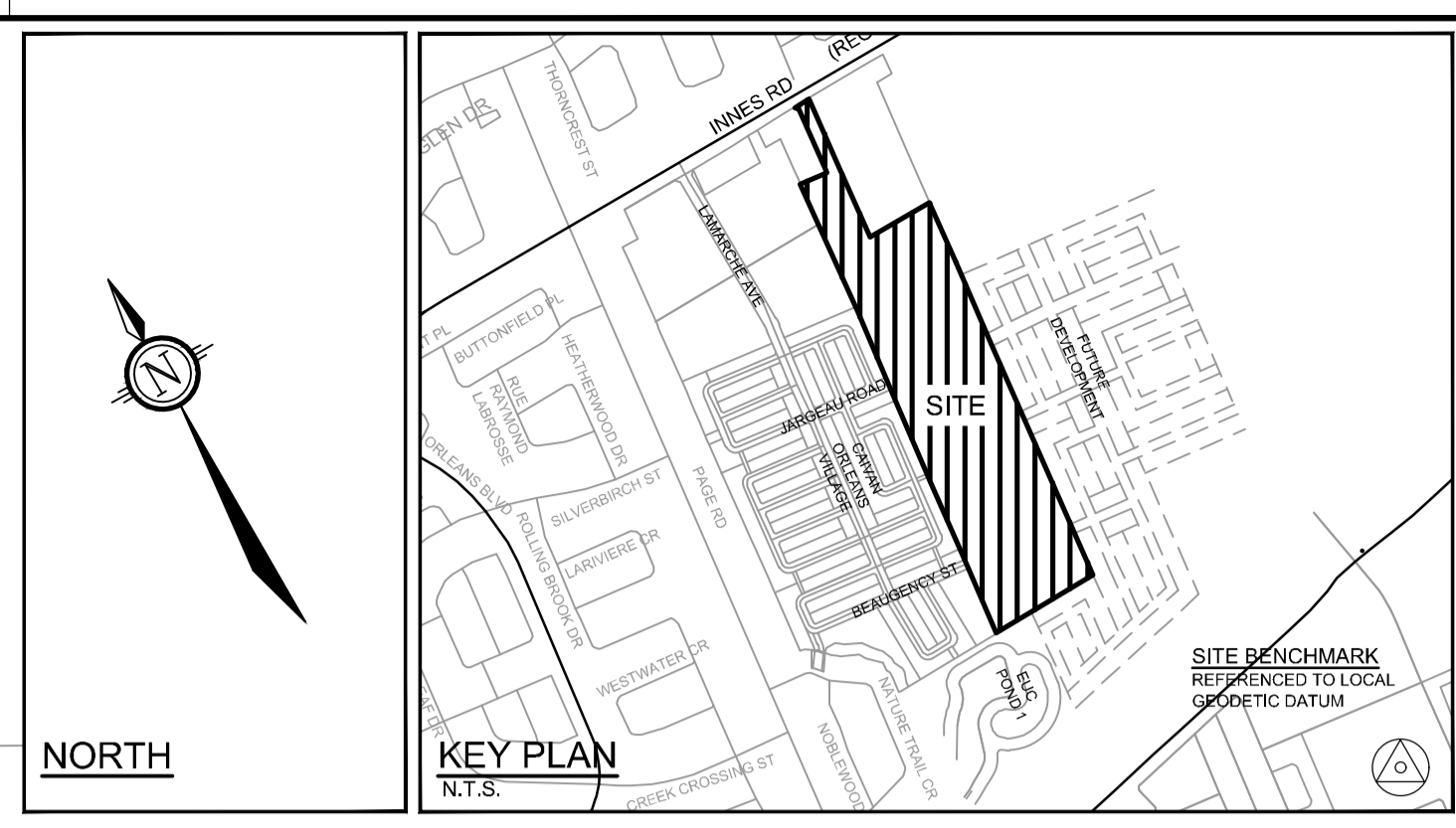


LEGEND:

- PROPERTY LINE
- JOINT UTILITY TRENCH
- COMMUNICATIONS TRENCH
- HYDRO SECONDARY
- GAS MAIN
- STREETLIGHT CABLE AND DUCT
- 1 PHASE PADMOUNT HYDRO TRANSFORMER
- HYDRO PRIMARY PEDESTAL
- 6x12 PRECAST MANHOLE
- STREETLIGHT
- STREETLIGHT DISCONNECT
- PROPOSED STREETLIGHT GROUNDING ROD
- UTILITY POLE
- ⊗ ROGERS PEDESTAL
- ⊗ ROGERS GRADE LEVEL BOX
- ⊗ BELL PEDESTAL
- ⊗ BELL CENTRAL SPLIT POINT
- ⊗ BELL GRADE LEVEL BOX
- PROPOSED ROAD CROSSING
- 25SL
- 7H
- 1C
- 1B
- 1G
- DC
- CMB
- UTILITY POLE
- ⊗ ROGERS PEDESTAL
- ⊗ ROGERS GRADE LEVEL BOX
- ⊗ BELL PEDESTAL
- ⊗ BELL CENTRAL SPLIT POINT
- ⊗ BELL GRADE LEVEL BOX
- PROPOSED ROAD CROSSING
- 2 STREET LIGHT
- 7 HYDRO
- 1 ROGERS
- 1 BELL
- 1 GAS
- DEPRESSED CURB
- COMMUNITY MAILBOX
- HYDRO METER BOX LOCATION
- ⊗ HYDRO GANG METER LOCATION
- ⊗ GAS METER BOX LOCATION
- ⊗ PROPOSED HYDRANT LOCATION
- ⊗ PROPOSED ROAD CATCHBASIN
- ⊗ PROPOSED REARYARD CATCHBASIN
- ⊗ PROPOSED SANITARY MANHOLE
- ⊗ PROPOSED STORM MANHOLE
- ⊗ SERVICE LOCATION
- PROPOSED DECIDUOUS TREE
- ⊗ PROPOSED SIDEWALK REINSTATEMENT
- ⊗ DRAINAGE EASEMENT
- ⊗ UTILITY EASEMENT
- ⊗ EXISTING TREE TO REMAIN IF POSSIBLE
- ⊗ PROPOSED OVERLAY

COMPOSITE UTILITY PLAN TO BE READ IN CONJUNCTION WITH:
 -HYDRO OTTAWA PLANS, REF NO. 9202015768-RES
 AND REF NO. 9202015769-RES
 -BELL PLANS, REF NO. XXX
 -ROGERS PLANS, REF NO. XXX
 -ENBRIDGE PLANS, REF NO. XXX
 -STREETLIGHTING PLAN, 118224-SL
 -LANDSCAPE PLANS,

ALL FOOTPRINTS SHOWN ARE CONCEPTUAL. REFER TO INDIVIDUAL SITING PLANS FOR FINAL MODEL FOOTPRINT
 REFER TO 118224-XS1 AND 118224-XS2 FOR TYPICAL ROAD CROSS SECTIONS
 REFER TO 118224-ND FOR ADDITIONAL NOTES & DETAILS



SEE DRAWING No. 118224-CUP2

NOTE:
 THE POSITION OF ALL POLE LINES, CONDUITS, WATERMANS, SEWERS AND OTHER UNDERGROUND AND OVERGROUND UTILITIES AND STRUCTURES IS NOT NECESSARILY SHOWN ON THE CONTRACT DRAWINGS, AND WHERE SHOWN, THE ACCURACY OF THE POSITION OF SUCH UTILITIES AND STRUCTURES IS NOT GUARANTEED. BEFORE STARTING WORK, DETERMINE THE EXACT LOCATION OF ALL SUCH UTILITIES AND STRUCTURES AND ASSUME ALL LIABILITY FOR DAMAGE TO THEM.

No.	REVISION	BY	No.	REVISION	DATE	BY	
16.	HYDRO COMMENTS	APR 10/24	BHB	8.	ISSUED FOR UTILITY CONFIRMATION	MAY 18/22	BHB
15.	FINAL REVIEW, ECA, CLI AND MATERIAL ORDER	MAR 27/24	BHB	7.	ISSUED FOR FINAL CITY APPROVAL AND ECA	MAY 11/22	BHB
14.	REVISED PER UTILITY PLANS	MAR 19/24	BHB	6.	ISSUED FOR ECA AND TENDER	MAR 18/22	BHB
13.	REVISED AND ISSUED FOR REVIEW AND TENDER	JAN 17/24	BHB	5.	REVISED AND REISSUED FOR REVIEW	MAR 10/22	BHB
12.	REVISED PER HYDRO PLAN	DEC 4/23	BHB	4.	ISSUED FOR UTILITY CIRCULATION	JAN 13/22	BHB
11.	ISSUED FOR REVIEW PHASE 2 & 3	APRIL 3/23	BHB	3.	REVISED EASEMENT LAYOUT	DEC 17/21	BHB
10.	ISSUED FOR CONSTRUCTION	JUNE 27/22	BHB	2.	REVISED AND REISSUED FOR REVIEW	NOV 26/21	BHB
9.	REVISED PER HYDRO COMMENTS	JUNE 22/22	BHB	1.	ISSUED FOR REVIEW	JUNE 18/21	BHB

SCALE: 1:500

DESIGN: BR

CHECKED: BCS

DRAWN: BR

CHECKED: BCS

APPROVED: BHB

NOVATECH
 Engineers, Planners & Landscape Architects
 Suite 200, 240 Michael Cowpland Drive
 Ottawa, Ontario, Canada K2M 1P6
 Telephone: (613) 254-9643
 Facsimile: (613) 254-5867
 Website: www.novatech-eng.com

LOCATION: CITY OF OTTAWA THE COMMONS

DRAWING NAME: COMPOSITE UTILITY PLAN

PROJECT No.: 118224-00

REV: REV # 15

DRAWING No.: 118224-CUP1

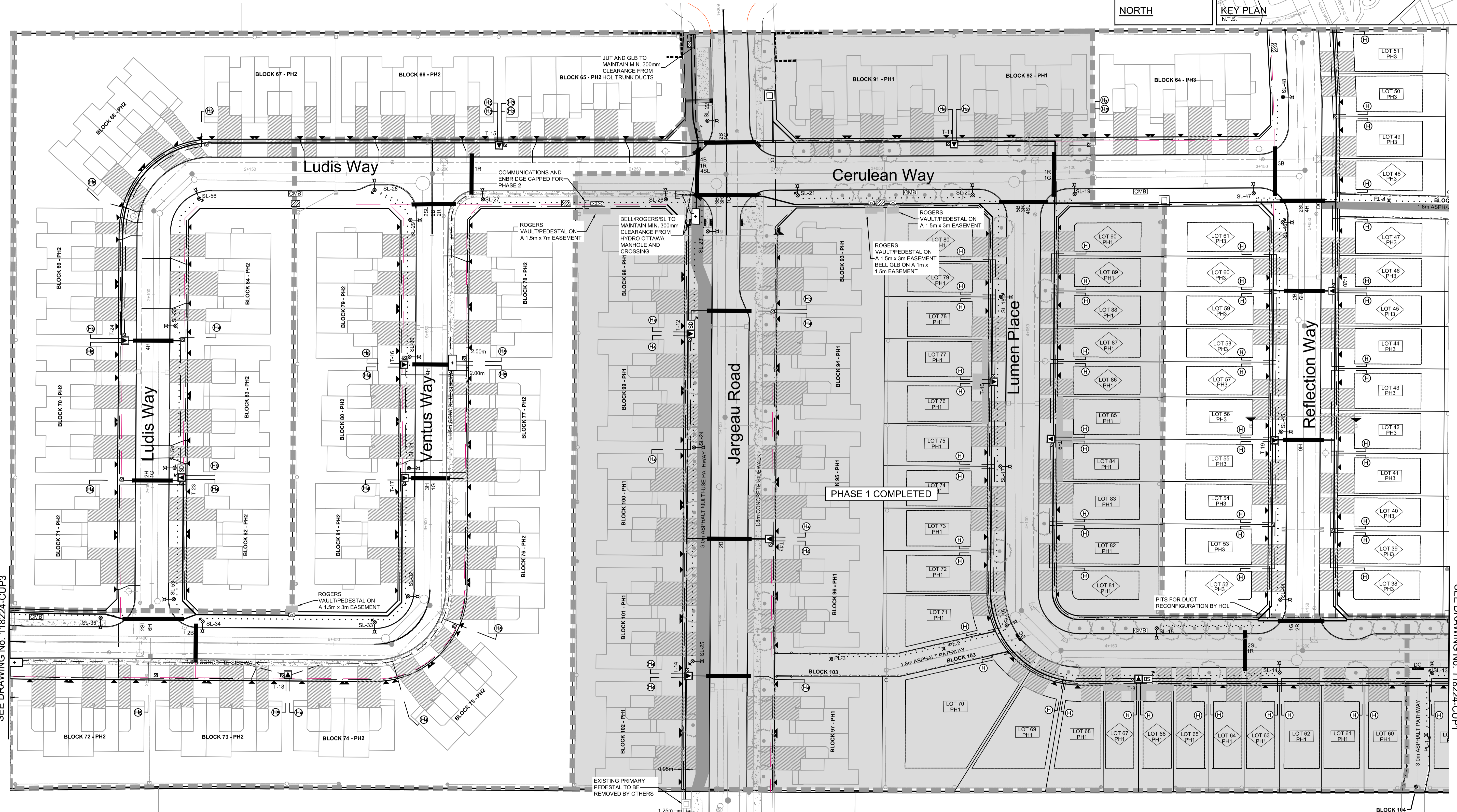
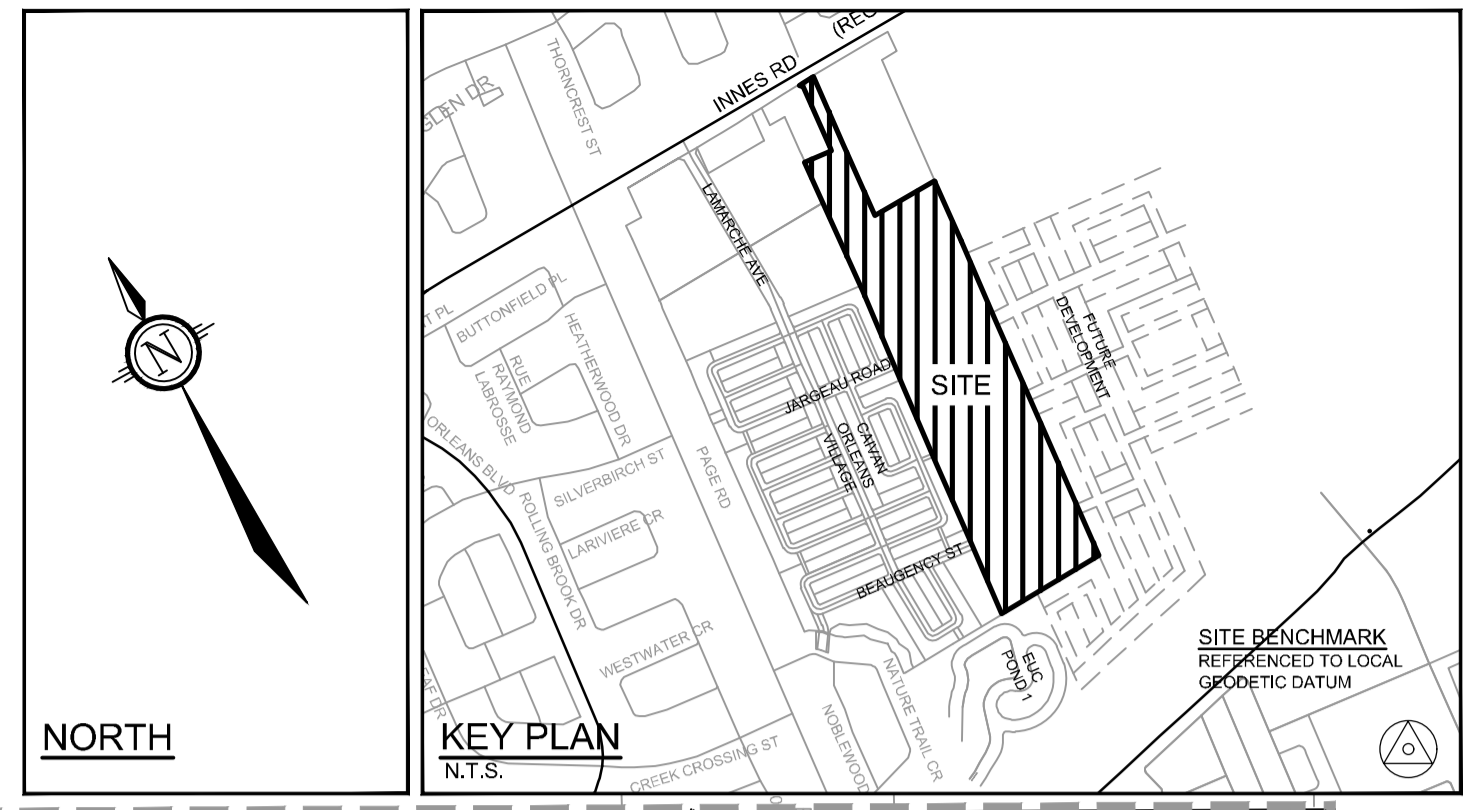
D07-16-19-0027 #18535

LEGEND:

- | | | | | | | |
|------------------------------------|---|--------------------------|-----|------------------------------|---|-------------------------------------|
| PROPERTY LINE | ○ | UTILITY POLE | (H) | HYDRO METER BOX LOCATION | ○ | PROPOSED DECIDUOUS TREE |
| JOINT UTILITY TRENCH | ⊠ | ROGERS PEDESTAL | (H) | HYDRO GANG METER LOCATION | ⊠ | PROPOSED SIDEWALK REINSTATEMENT |
| COMMUNICATIONS TRENCH | ⊠ | ROGERS GRADE LEVEL BOX | (H) | GAS METER BOX LOCATION | ⊠ | DRAINAGE EASEMENT |
| HYDRO SECONDARY | ⊠ | BELL PEDESTAL | (H) | PROPOSED HYDRANT LOCATION | ⊠ | UTILITY EASEMENT |
| GAS MAIN | ⊠ | BELL CENTRAL SPLIT POINT | (H) | PROPOSED ROAD CATCHBASIN | ⊠ | EXISTING TREE TO REMAIN IF POSSIBLE |
| STREETLIGHT CABLE AND DUCT | ⊠ | BELL GRADE LEVEL BOX | (H) | PROPOSED REARYARD CATCHBASIN | ⊠ | PROPOSED OVERLAY |
| 1 PHASE PADMOUNT HYDRO TRANSFORMER | ⊠ | PROPOSED ROAD CROSSING | (H) | PROPOSED SANITARY MANHOLE | ⊠ | |
| HYDRO PRIMARY PEDESTAL | ⊠ | 2 STREET LIGHT | (H) | PROPOSED STORM MANHOLE | ⊠ | |
| 6x12 PRECAST MANHOLE | ⊠ | 7 HYDRO | (H) | SERVICE LOCATION | ⊠ | |
| STREETLIGHT | ⊠ | 1 ROGERS | (H) | | | |
| STREETLIGHT DISCONNECT | ⊠ | 1 BELL | (H) | | | |
| PROPOSED STREETLIGHT GROUNDING ROD | ⊠ | 1 GAS | (H) | | | |
| | | CONCRETE ENCASED | (H) | | | |
| | | DIRECT BURIED | (H) | | | |
| | | DEPRESSED CURB | (H) | | | |
| | | COMMUNITY MAILBOX | (H) | | | |

COMPOSITE UTILITY PLAN TO BE READ IN CONJUNCTION WITH:
 -HYDRO OTTAWA PLANS, REF NO. 9202015768-RES
 -BELL PLANS, REF NO. XXX
 -ROGERS PLANS, REF NO. XXX
 -ENBRIDGE PLANS, REF NO. XXX
 -STREETLIGHTING PLAN, 118224-SL
 -LANDSCAPE PLANS.

ALL FOOTPRINTS SHOWN ARE CONCEPTUAL. REFER TO INDIVIDUAL SITING PLANS FOR FINAL MODEL FOOTPRINT
 REFER TO 118224-XS1 AND 118224-XS2 FOR TYPICAL ROAD CROSS SECTIONS
 REFER TO 118224-ND FOR ADDITIONAL NOTES & DETAILS

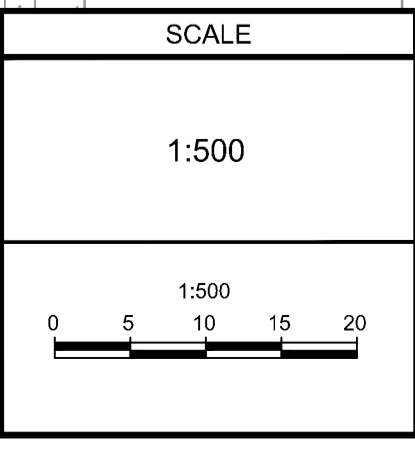


SEE DRAWING No. 118224-CUP3

SEE DRAWING No. 118224-CUP1

NOTE:
 THE POSITION OF ALL POLE LINES, CONDUITS, WATERMANS, SEWERS AND OTHER UNDERGROUND AND OVERGROUND UTILITIES AND STRUCTURES IS NOT NECESSARILY SHOWN ON THE CONTRACT DRAWINGS, AND WHERE SHOWN, THE ACCURACY OF THE POSITION OF SUCH UTILITIES AND STRUCTURES IS NOT GUARANTEED. BEFORE STARTING WORK, DETERMINE THE EXACT LOCATION OF ALL SUCH UTILITIES AND STRUCTURES AND ASSUME ALL LIABILITY FOR DAMAGE TO THEM.

No.	REVISION	DATE	BY	No.	REVISION	DATE	BY	No.	REVISION	DATE	BY
16.	REVISED PER UTILITY PLANS	MAR 19/24	BHB	8.	ISSUED FOR FINAL CITY APPROVAL AND ECA	MAY 11/22	BHB				
15.	REVISED AND ISSUED FOR REVIEW AND TENDER	JAN 17/24	BHB	7.	ISSUED FOR ECA AND TENDER	MAR 18/22	BHB				
14.	REVISED PER HYDRO PLAN	DEC 4/23	BHB	6.	REVISED AND REISSUED FOR REVIEW	MAR 10/22	BHB				
13.	ISSUED FOR REVIEW PHASE 2 & 3	APRIL 3/23	BHB	5.	REVISED PER BELL COMMENTS	JAN 13/22	BHB				
12.	ISSUED FOR CONSTRUCTION	JUNE 27/22	BHB	4.	ISSUED FOR UTILITY CIRCULATION	JAN 13/22	BHB				
11.	REVISED PER HYDRO COMMENTS	JUNE 22/22	BHB	3.	REVISED EASEMENT LAYOUT	DEC 17/21	BHB				
10.	REVISED AND REISSUED FOR UTILITY CONFIRMATION	JUNE 6/22	BHB	2.	REVISED AND REISSUED FOR REVIEW	NOV 26/21	BHB				
9.	ISSUED FOR UTILITY CONFIRMATION	MAY 18/22	BHB	1.	ISSUED FOR REVIEW	JUNE 18/21	BHB				
18.	HYDRO COMMENTS	APR 10/24	BHB								
17.	FINAL REVIEW, ECA, CLI AND MATERIAL ORDER	MAR 27/24	BHB								



DESIGN	BR
CHECKED	BCS
DRAWN	BR
CHECKED	BCS
APPROVED	BHB

NOVATECH
 Engineers, Planners & Landscape Architects
 Suite 200, 240 Michael Cowpland Drive
 Ottawa, Ontario, Canada K2M 1P6
 Telephone (613) 254-9643
 Facsimile (613) 254-5867
 Website www.novatech-eng.com

LOCATION
 CITY OF OTTAWA
 THE COMMONS

DRAWING NAME
COMPOSITE UTILITY PLAN

PROJECT No.
 118224-00

REV
 REV # 17

DRAWING No.
 118224-CUP2

M:\2018\118224\CAD\Drawings\118224-CUP2.dwg, 118224-CUP2, Apr 10, 2024, 2:28pm, Inreid

D07-16-19-0027 #18535

LEGEND:

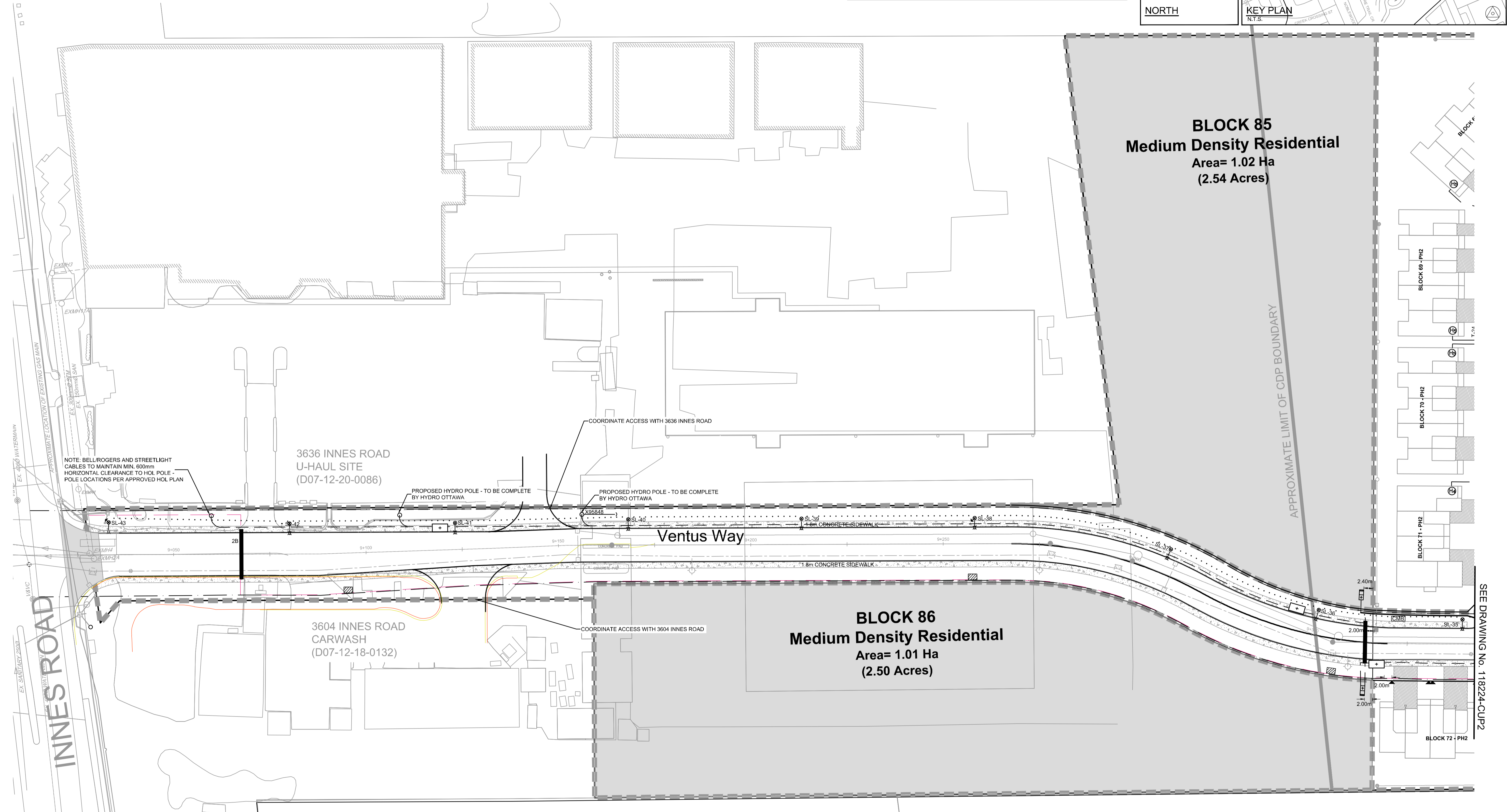
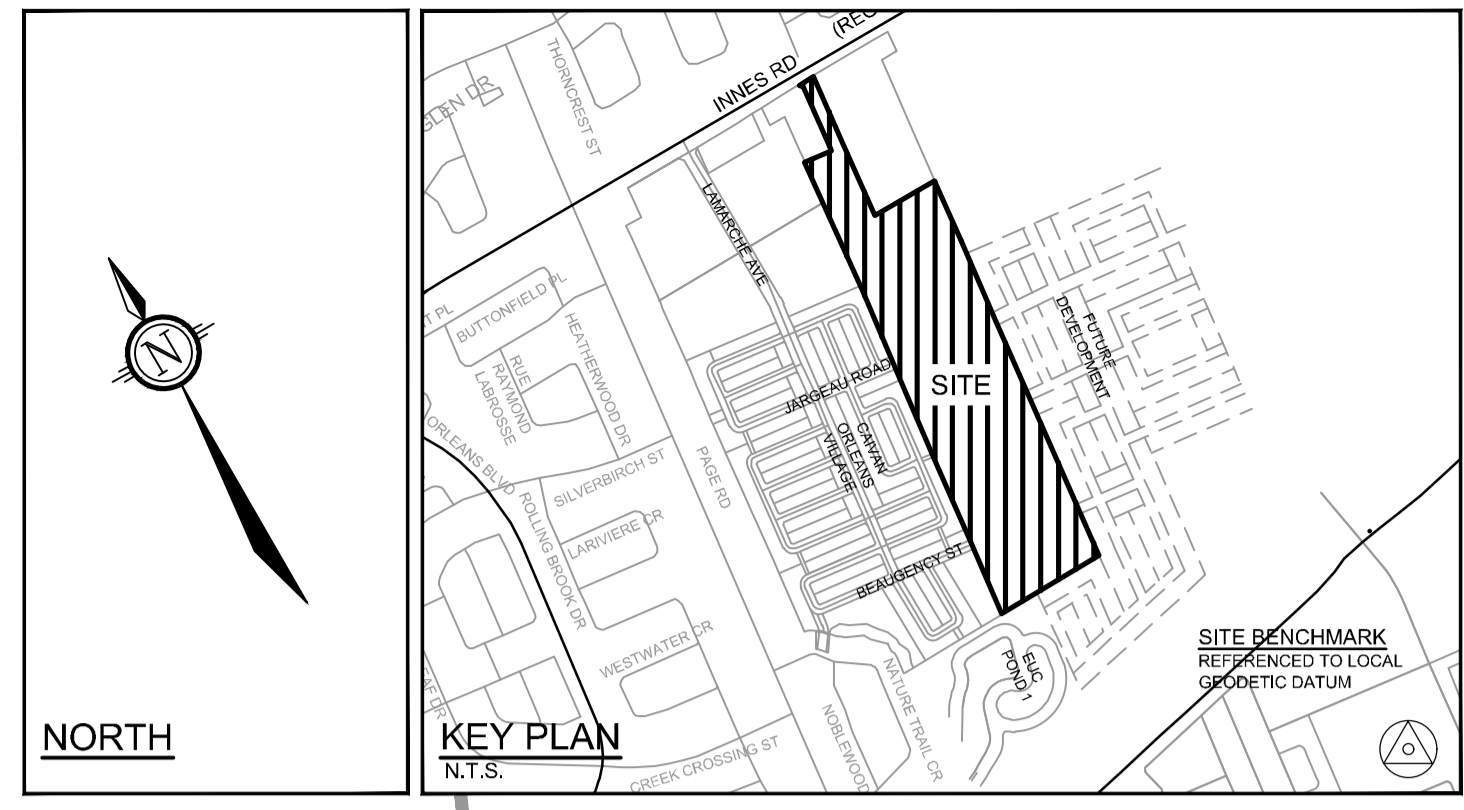
	PROPERTY LINE		UTILITY POLE		HYDRO METER BOX LOCATION
	JOINT UTILITY TRENCH		ROGERS PEDESTAL		HYDRO GANG METER LOCATION
	COMMUNICATIONS TRENCH		ROGERS GRADE LEVEL BOX		GAS METER BOX LOCATION
	HYDRO SECONDARY TRENCH		BELL PEDESTAL		PROPOSED HYDRANT LOCATION
	GAS MAIN		BELL CENTRAL SPLIT POINT		PROPOSED ROAD CATCHBASIN
	STREETLIGHT CABLE AND DUCT		BELL GRADE LEVEL BOX		PROPOSED REARYARD CATCHBASIN
	1 PHASE PADMOUNT HYDRO TRANSFORMER		PROPOSED ROAD CROSSING		PROPOSED SANITARY MANHOLE
	HYDRO PRIMARY PEDESTAL		2 STREET LIGHT		PROPOSED STORM MANHOLE
	6x12 PRECAST MANHOLE		7 HYDRO		SERVICE LOCATION
	STREETLIGHT		1 ROGERS		PROPOSED DECIDUOUS TREE
	STREETLIGHT DISCONNECT		1 BELL		PROPOSED SIDEWALK REINSTATEMENT
	PROPOSED STREETLIGHT GROUNDING ROD		1 GAS		DRAINAGE EASEMENT
			DEPRESSED CURB		UTILITY EASEMENT
			CONCRETE ENCASED		EXISTING TREE TO REMAIN IF POSSIBLE
			DIRECT BURIED		PROPOSED OVERLAY
			COMMUNITY MAILBOX		

COMPOSITE UTILITY PLAN TO BE READ IN CONJUNCTION WITH:
 -HYDRO OTTAWA PLANS, REF NO. 9202015768-RES AND REF NO. 9202015769-RES
 -BELL PLANS, REF NO. XXX
 -ROGERS PLANS, REF NO. XXX
 -ENBRIDGE PLANS, REF NO. XXX
 -STREETLIGHTING PLAN, 118224-SL
 -LANDSCAPE PLANS.

ALL FOOTPRINTS SHOWN ARE CONCEPTUAL. REFER TO INDIVIDUAL SITING PLANS FOR FINAL MODEL FOOTPRINT

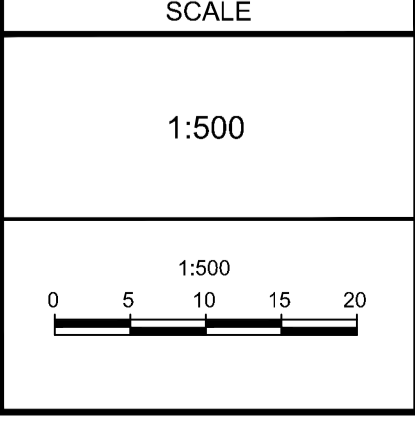
REFER TO 118224-XS1 AND 118224-XS2 FOR TYPICAL ROAD CROSS SECTIONS

REFER TO 118224-ND FOR ADDITIONAL NOTES & DETAILS



NOTE:
 THE POSITION OF ALL POLE LINES, CONDUITS, WATERMANS, SEWERS AND OTHER UNDERGROUND AND OVERGROUND UTILITIES AND STRUCTURES IS NOT NECESSARILY SHOWN ON THE CONTRACT DRAWINGS, AND WHERE SHOWN, THE ACCURACY OF THE POSITION OF SUCH UTILITIES AND STRUCTURES IS NOT GUARANTEED. BEFORE STARTING WORK, DETERMINE THE EXACT LOCATION OF ALL SUCH UTILITIES AND STRUCTURES AND ASSUME ALL LIABILITY FOR DAMAGE TO THEM.

No.	REVISION	DATE	BY	No.	REVISION	DATE	BY
10.	BELL COMMENTS	MAY 27/24	BHB	8.	FINAL REVIEW, ECA, CLI AND MATERIAL ORDER	MAR 27/24	BHB
9.	HYDRO COMMENTS	APR 10/24	BHB	7.	REVISED AND ISSUED FOR REVIEW AND TENDER	JAN 17/24	BHB
				6.	REVISED PER HYDRO PLAN	DEC 4/23	BHB
				5.	ISSUED FOR REVIEW PHASE 2 & 3	APRIL 3/23	BHB
				4.	ISSUED FOR FINAL CITY APPROVAL AND ECA	MAY 11/22	BHB
				3.	REVISED AND REISSUED FOR REVIEW	MAR 10/22	BHB
				2.	REVISED AND REISSUED FOR REVIEW	NOV 26/21	BHB
				1.	ISSUED FOR REVIEW	JUNE 18/21	BHB



DESIGN	BR
CHECKED	BR
DRAWN	BCS
CHECKED	BR
APPROVED	BCS
	BHB

NOVATECH
 Engineers, Planners & Landscape Architects
 Suite 200, 240 Michael Cowpland Drive
 Ottawa, Ontario, Canada K2M 1P6
 Telephone (613) 254-9643
 Facsimile (613) 254-5867
 Website www.novatech-eng.com

LOCATION CITY OF OTTAWA THE COMMONS	PROJECT No. 118224-00
DRAWING NAME COMPOSITE UTILITY PLAN	REV REV #10
	DRAWING No. 118224-CUP3

M:\2018\118224\CAD\Design\118224-CUP3.dwg, 118224-CUP3, Apr 10, 2024, 2:55pm, bnead

SEE DRAWING No. 118224-CUP2

D07-16-19-0027 #18535