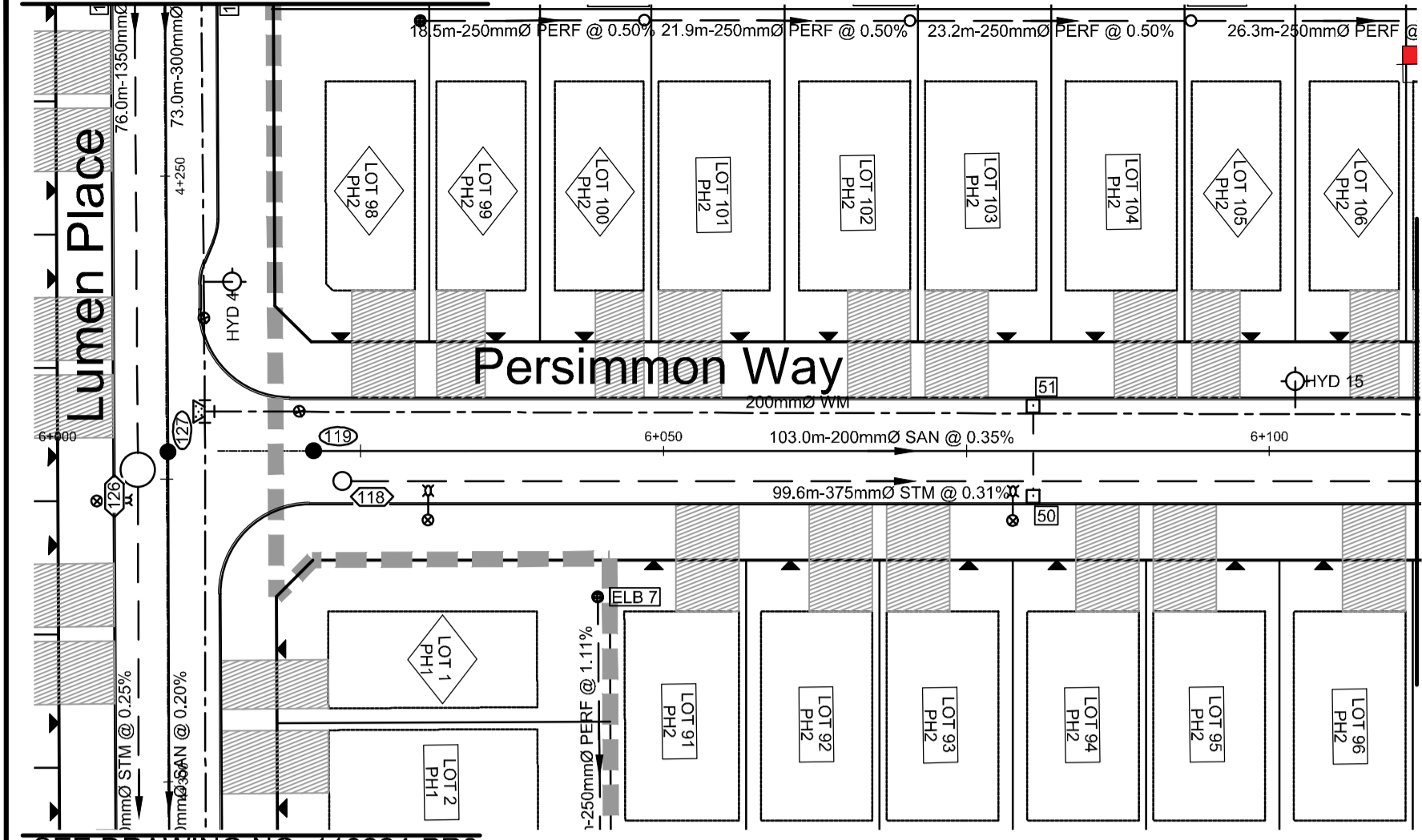
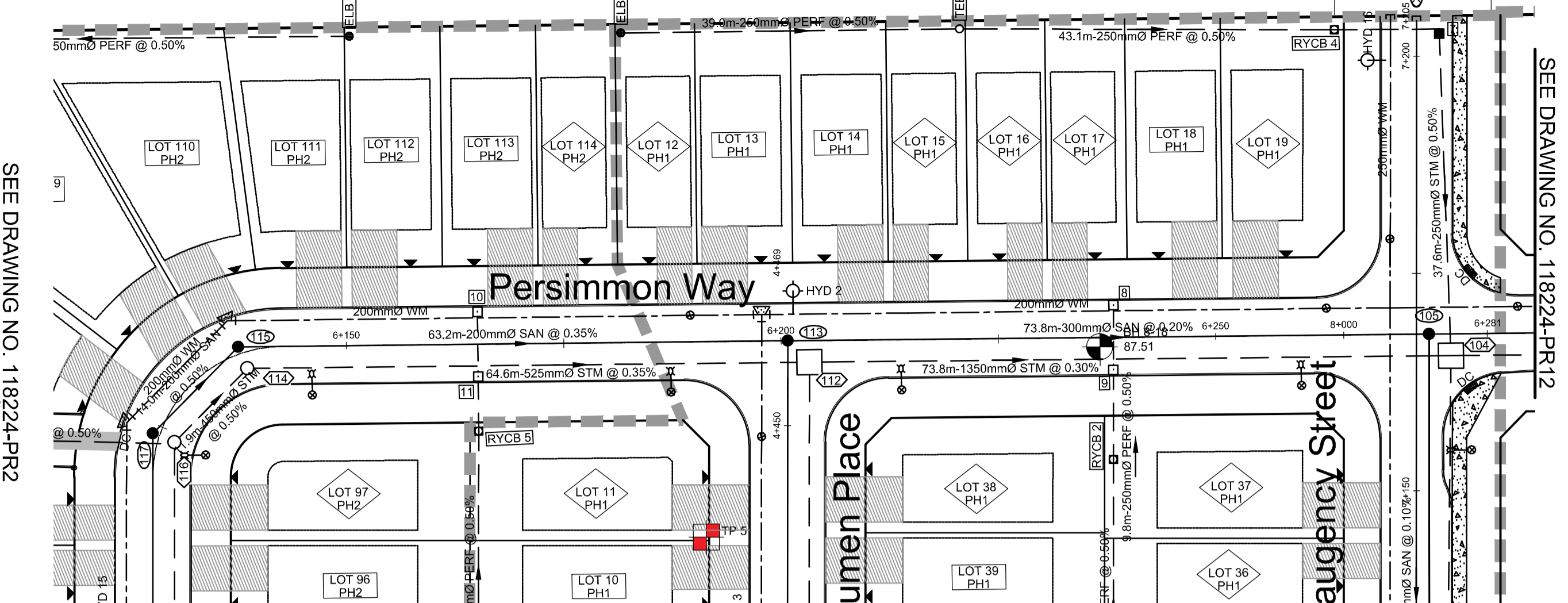


SEE DRAWING NO. 118224-PR3



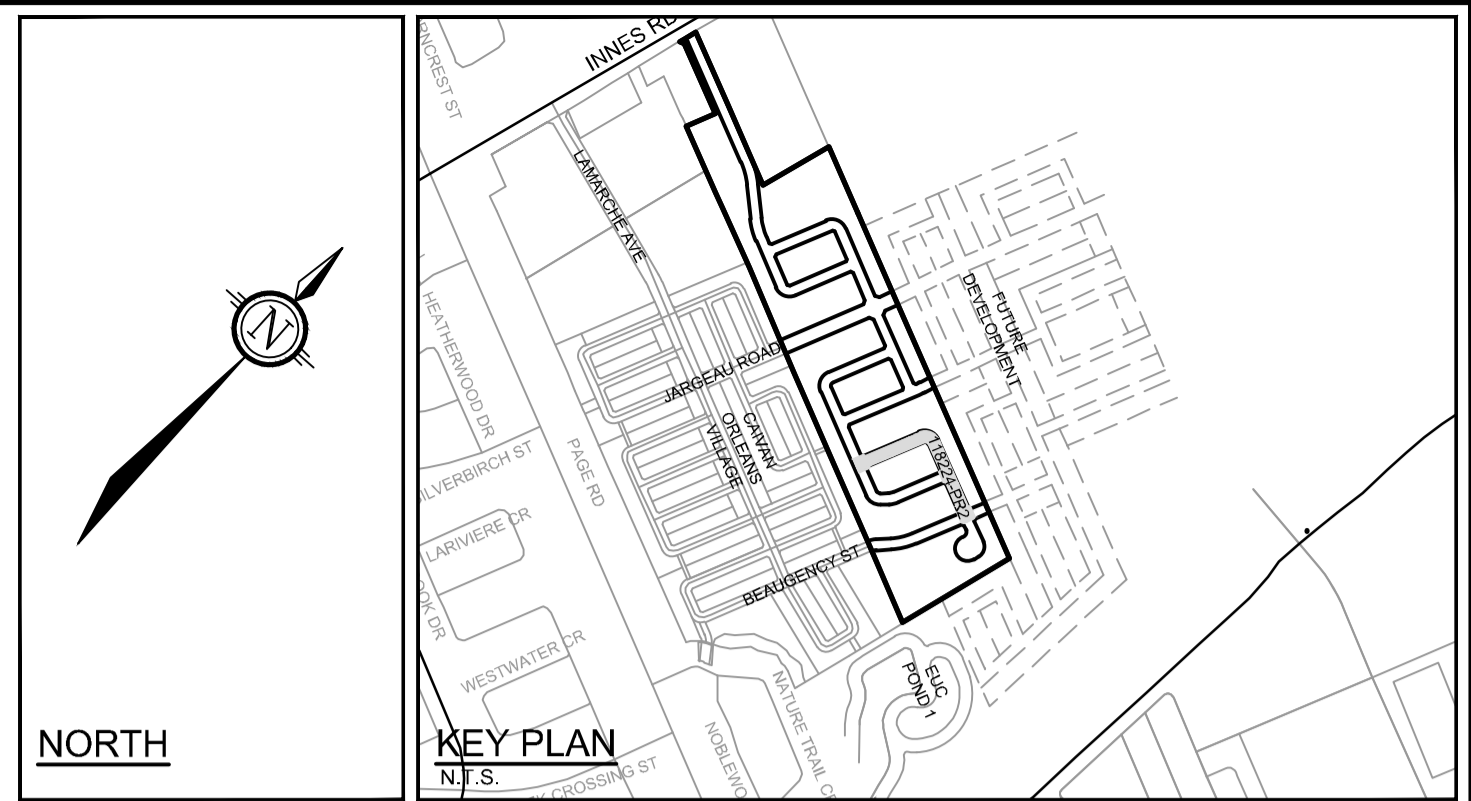
SEE DRAWING NO. 118224-PR3



SEE DRAWING NO. 118224-PR2

SEE DRAWING NO. 118224-PR3

SEE DRAWING NO. 118224-PR1



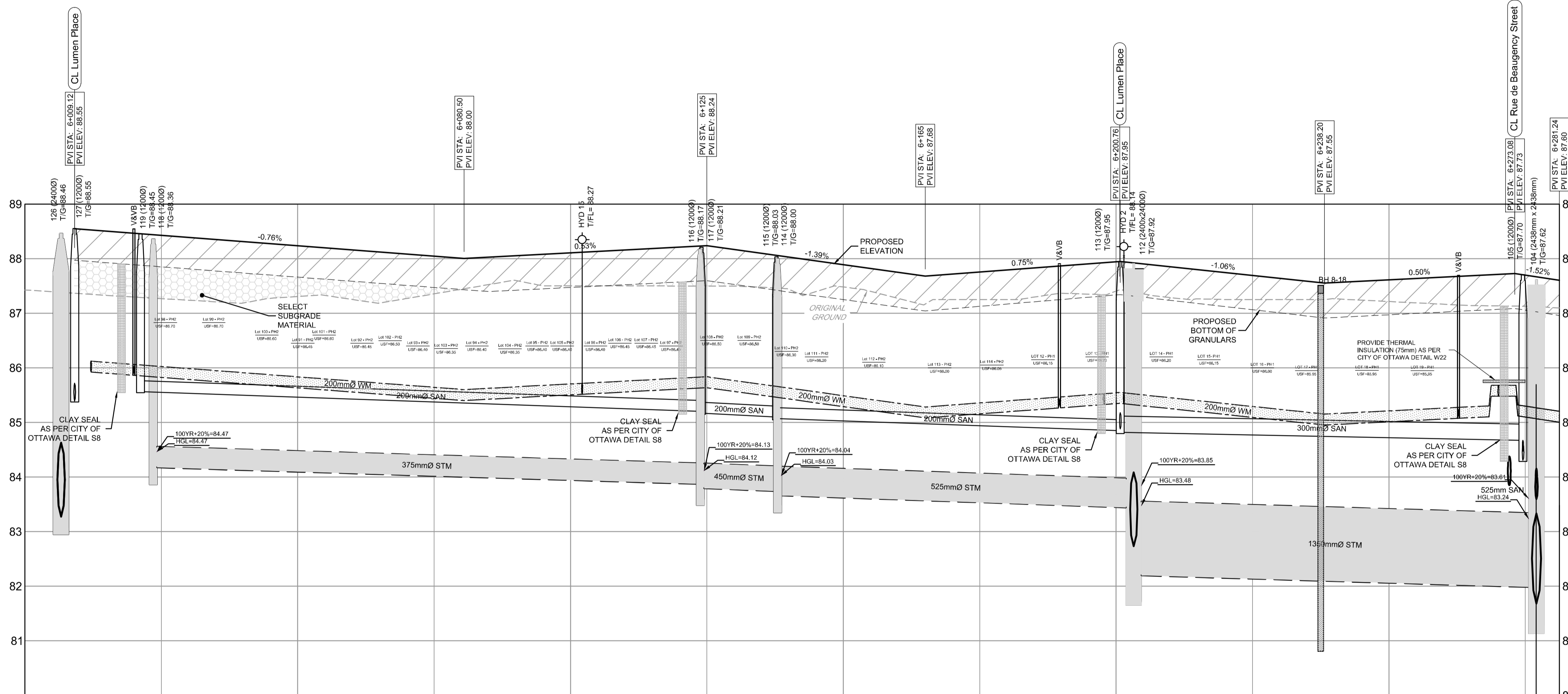
LEGEND

- 200mm Ø WM PROPOSED WATERMAIN
- PROPOSED VALVE LOCATION
- V&VB VALVE & VALVE BOX
- PROPOSED HYDRANT C/W VALVE & LEAD
- T/F=98.45 PROPOSED TOP OF BOTTOM FLANGE
- BEND PROPOSED BEND AND THRUSTBLOCK 11.25°, 22.5°, 45° or TEE (SEE PLAN AND PROFILES)
- SERVICE CONNECTION STUB (SINGLE)
 - 100mm STORM @ 1.0%
 - 150mm WATER
 - 125mm SANITARY @ 1.0%
- PROPOSED SANITARY MH & SEWER
- PROPOSED STORM MH & SEWER
- LYCB PROPOSED LANDSCAPE TEE CATCHBASIN & PERFORATED SUBDRAIN PER S29, S30, S31
- LYCB PROPOSED LANDSCAPE ELBOW CATCHBASIN & PERFORATED SUBDRAIN PER S29, S30, S31
- RYCBMH PROPOSED REAR YARD CATCHBASIN MANHOLE & LEAD
- RYCB PROPOSED REAR YARD CATCHBASIN & LEAD
- CB PROPOSED ROAD CATCHBASIN
- ▲ DIRECTION OF FLOW

- EXISTING 1.8m CONCRETE SIDEWALK
- DRAINAGE EASEMENT
- EXISTING FENCE - CHAINLINK
- SIDEWALK REINSTATEMENT FOR DEPRESSED CURBS
- UTILITY EASEMENT
- PROPOSED OVERLAY

LEGEND

- BH 19-17 91.92 BOREHOLE LOCATION
- FILL
- TOP SOIL
- SAND
- CLAYEY SILT
- SILTY CLAY
- GLACIAL TILL
- WEATHERED BEDROCK

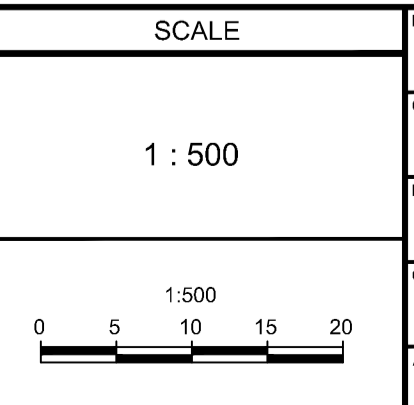


CHAINAGE	PROPOSED ELEVATION	TOP OF WM ELEVATION	STORM SEWER INVERTS	SANITARY SEWER INVERTS	EXISTING ELEVATION
6+000	89.55	86.12	NW=83.28 SE=82.77	NW=85.42 SE=85.29	86.00
4+274.26 4+272.76	88.43	86.06	NE=84.15	NE=85.56	86.43
6+050	88.23	85.83	99.63m - 375mm Ø IpeX PVC DR 35 STM @ 0.31%	103.00m - 200mm Ø IpeX PVC DR 35 SAN @ 0.35%	86.23
6+075	88.04	85.64			86.04
6+100	88.00	85.60			86.00
6+102.13 HYD 15	88.10	85.70			86.10
6+123.78 6+121.29	88.24	85.84	11.9m - 450mm Ø STM @ 0.50%	14.0m - 200mm Ø IpeX PVC DR 35 SAN @ 0.50%	86.24
6+137.74 6+137.95	87.89	85.49	64.64m - 525mm Ø Mcon Circular Conc. Pipe STM @ 0.35%	63.20m - 200mm Ø IpeX PVC DR 35 SAN @ 0.35%	87.89
6+150	87.88	85.28			87.88
6+175	87.76	85.36			87.76
6+186.60 V&VB	87.94	85.47			87.94
6+200.43 HYD 2 6+200.43 HYD 2	87.95	85.53	73.80m - 1350mm Ø Mcon Circular Conc. Pipe STM @ 0.30%	73.80m - 300mm Ø IpeX PVC DR 35 SAN @ 0.20%	87.95
6+225	87.69	85.29			87.69
6+250	87.61	85.15			87.61
6+262.77 V&VB	87.73	85.28			87.73
6+274.01 6+275.04	87.70	85.26			87.70
6+281.24	87.60	85.20			87.60

NOTE: THE POSITION OF ALL POLE LINES, CONDUITS, WATERMAINS, SEWERS AND OTHER UNDERGROUND AND OVERGROUND UTILITIES AND STRUCTURES IS NOT NECESSARILY SHOWN ON THE CONTRACT DRAWINGS, AND WHERE SHOWN, THE ACCURACY OF THE POSITION OF SUCH UTILITIES AND STRUCTURES IS NOT GUARANTEED. BEFORE STARTING WORK, DETERMINE THE EXACT LOCATION OF ALL SUCH UTILITIES AND STRUCTURES AND ASSUME ALL LIABILITY FOR DAMAGE TO THEM.

PRELIMINARY

No.	REVISION	DATE	BY
3.	REVISED AND REISSUED FOR REVIEW	NOV 26/21	BHB
2.	ISSUED FOR DISCUSSION	JUN 18/21	BHB
1.	ISSUED FOR DISCUSSION	MAR 5/21	BHB



DESIGN	CHECKED	DRAWN	CHECKED	APPROVED
DJC	BCS	DJC	BCS	BHB

FOR REVIEW ONLY

PROFESSIONAL ENGINEER
B. H. BAHIA
100164647
NOV 26, 2021
PROVINCE OF ONTARIO

NOVATECH
Engineers, Planners & Landscape Architects
Suite 200, 240 Michael Cowpland Drive
Ottawa, Ontario, Canada K2M 1P6
Telephone: (613) 254-9643
Facsimile: (613) 254-9867
Website: www.novatech-eng.com

LOCATION
CITY OF OTTAWA
THE COMMONS

DRAWING NAME
**PLAN AND PROFILE
VOIE DE PERSIMMON WAY
STATION 6+000 TO 6+281**

PROJECT No. 118224-00
REV 118224-00
REV # 3
DRAWING No. 118224-PR2

M:\2018\118224\CAD\Design\118224-PR.dwg, PR2, Nov 26, 2021, 4:12pm, mghauri

#18535

D07-16-19-0027