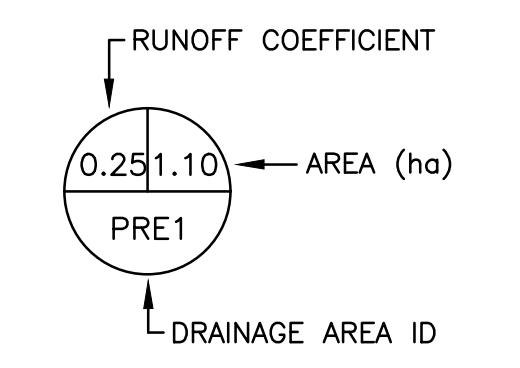


- LEGEND**
- PROPERTY BOUNDARY
 - +114.00 EXISTING ELEVATION
 - EXISTING CATCH BASIN
 - ⊙ EXISTING CATCH BASIN MANHOLE
 - EXISTING STORM SEWER & MANHOLE
 - PRE-DEVELOPMENT DRAINAGE AREA BOUNDARY
 - ⇒ PRE-DEVELOPMENT OVERLAND FLOW ROUTE



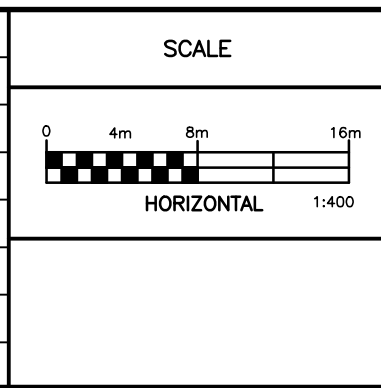
NOT FOR CONSTRUCTION

NOTES

THE POSITION OF ALL POLE LINES, CONDUITS, WATERMANS, SEWERS AND OTHER UNDERGROUND AND OVERGROUND UTILITIES AND STRUCTURES IS NOT NECESSARILY SHOWN ON THE CONTRACT DRAWINGS, AND WHERE SHOWN, THE ACCURACY OF SUCH UTILITIES AND STRUCTURES IS NOT GUARANTEED. BEFORE STARTING WORK, DETERMINE THE EXACT LOCATION OF ALL SUCH UTILITIES AND STRUCTURES AND ASSUME ALL LIABILITY FOR DAMAGE TO THEM.

PROPERTY BOUNDARIES HAVE BEEN DERIVED FROM THE TOPOGRAPHIC PLAN OF SURVEY BLOCK 1 REGISTERED PLAN 4M-1054, CITY OF OTTAWA, PREPARED BY FARLEY, SMITH & DENIS SURVEYING LTD. 2026. ELEVATIONS ARE GEODETIC AND ARE REFERRED TO GEODETIC DATUM CGVD-1928:1978.

NO.	REVISION DESCRIPTION	DATE	BY
2	ISSUED FOR REVIEW	27/04/26	BLM
1	ISSUED FOR 85% REVIEW	22/04/26	BLM



Robinson
Land Development

2936 Baseline Road,
Suite 200, Ottawa, ON
K2H 1B3
(613) 592-6060 rcil.com

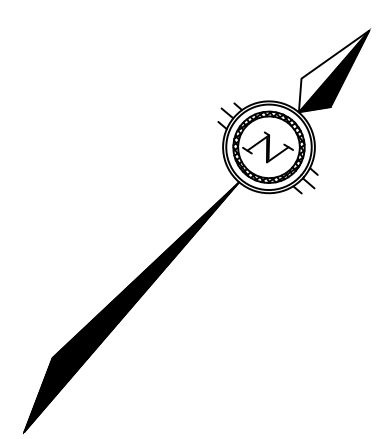
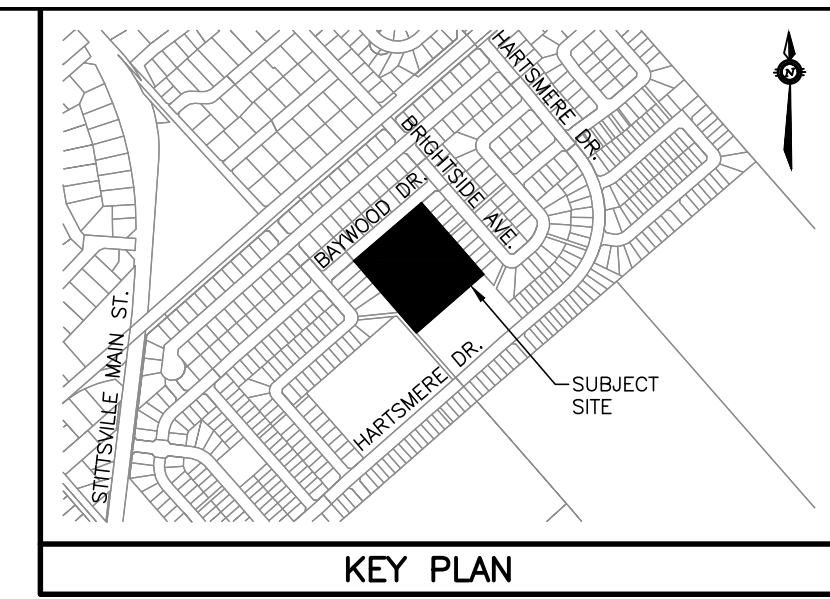
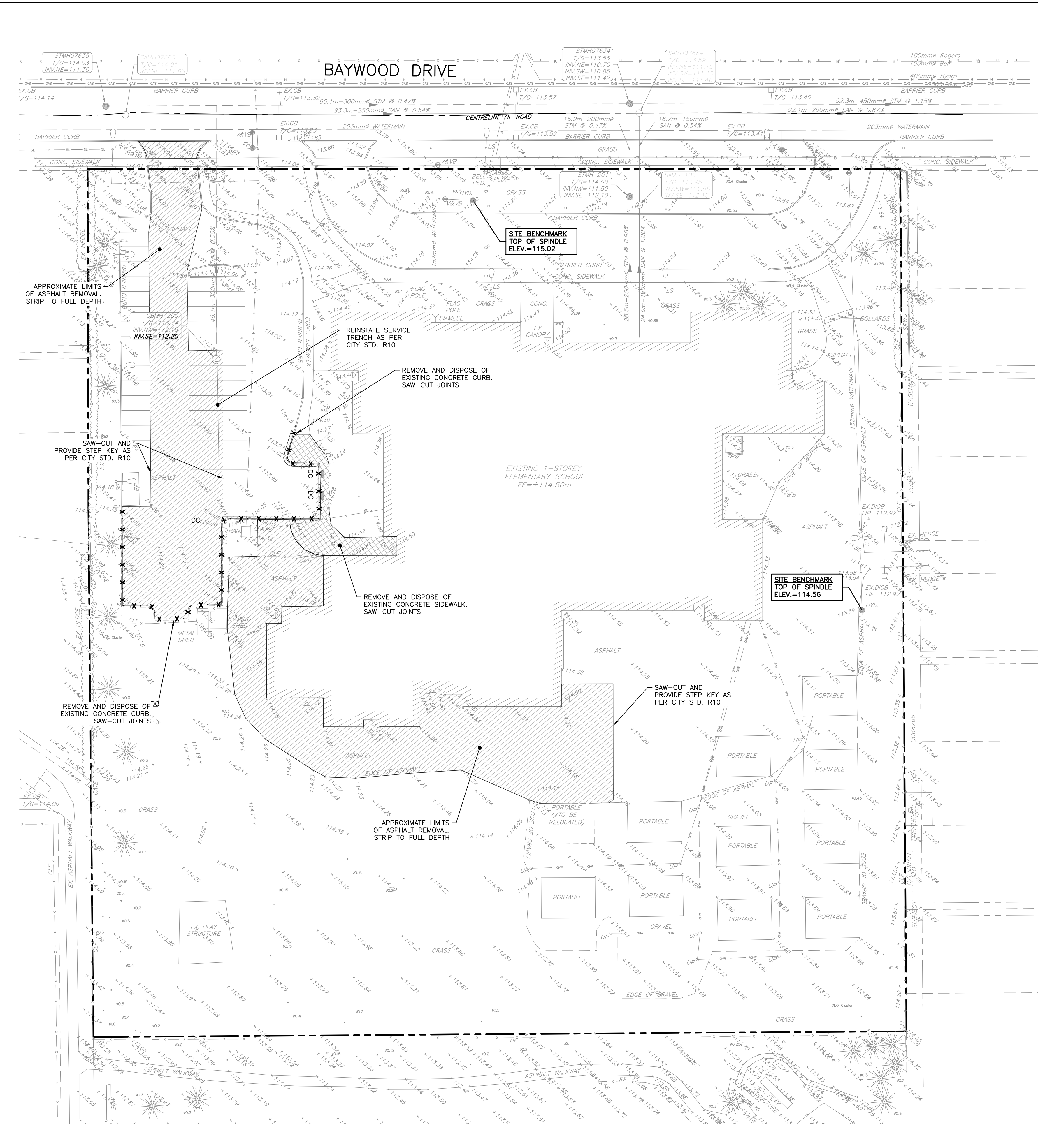
DESIGN	BLM
CHECKED	SG
DRAWN	BLM
CHECKED	SG
APPROVED	BLM

OTTAWA CATHOLIC SCHOOL BOARD

GUARDIAN ANGELS
CATHOLIC SCHOOL
4 BAYWOOD DRIVE, OTTAWA

EXISTING DRAINAGE AREA PLAN

PROJECT No.	26010
SURVEY	FARLEY, SMITH & DENIS SURVEYING LTD.
DATED	APRIL 2026
DWG. No.	26018-PRE1



- LEGEND**
- PROPERTY BOUNDARY
 - +114.00 EXISTING ELEVATION
 - EXISTING HYDRANT
 - EXISTING CATCH BASIN
 - ⊙ EXISTING CATCH BASIN MANHOLE
 - EXISTING WATERMAIN
 - EXISTING VALVE & VALVE BOX
 - EXISTING SANITARY SEWER & MANHOLE
 - EXISTING STORM SEWER & MANHOLE
 - EXISTING TREE
 - EXISTING UTILITY POLE AND GUY
 - EXISTING LIGHT STANDARD
 - EXISTING OVERHEAD UTILITIES
 - EXISTING UNDERGROUND HYDRO
 - EXISTING UNDERGROUND CABLE
 - EXISTING UNDERGROUND BELL
 - EXISTING UNDERGROUND GAS
 - EXISTING UNDERGROUND STREETLIGHTS
 - ▨ ASPHALT REMOVAL
 - ▩ CONCRETE SIDEWALK REMOVAL
 - x—x—x—x— CONCRETE CURB REMOVAL

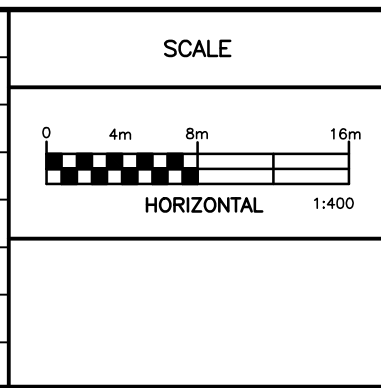
NOT FOR CONSTRUCTION

NOTES

THE POSITION OF ALL POLE LINES, CONDUITS, WATERMANS, SEWERS AND OTHER UNDERGROUND AND OVERGROUND UTILITIES AND STRUCTURES IS NOT NECESSARILY SHOWN ON THE CONTRACT DRAWINGS, AND WHERE SHOWN, THE ACCURACY OF THE POSITION OF SUCH UTILITIES AND STRUCTURES IS NOT GUARANTEED. BEFORE STARTING WORK, DETERMINE THE EXACT LOCATION OF ALL SUCH UTILITIES AND STRUCTURES AND ASSUME ALL LIABILITY FOR DAMAGE TO THEM.

PROPERTY BOUNDARIES HAVE BEEN DERIVED FROM THE TOPOGRAPHIC PLAN OF SURVEY BLOCK 1 REGISTERED PLAN 44-1054, CITY OF OTTAWA, PREPARED BY FARLEY, SMITH & DENNIS SURVEYING LTD. 2026. ELEVATIONS ARE GEODETIC AND ARE REFERRED TO GEODETIC DATUM CGVD-1928:1978.

NO.	REVISION DESCRIPTION	DATE	BY
2	ISSUED FOR REVIEW	27/04/26	BLM
1	ISSUED FOR 85% REVIEW	22/04/26	BLM



Robinson
Land Development

2936 Baseline Road,
Suite 200, Ottawa, ON
K2H 1B3
(613) 592-6060 rcil.com

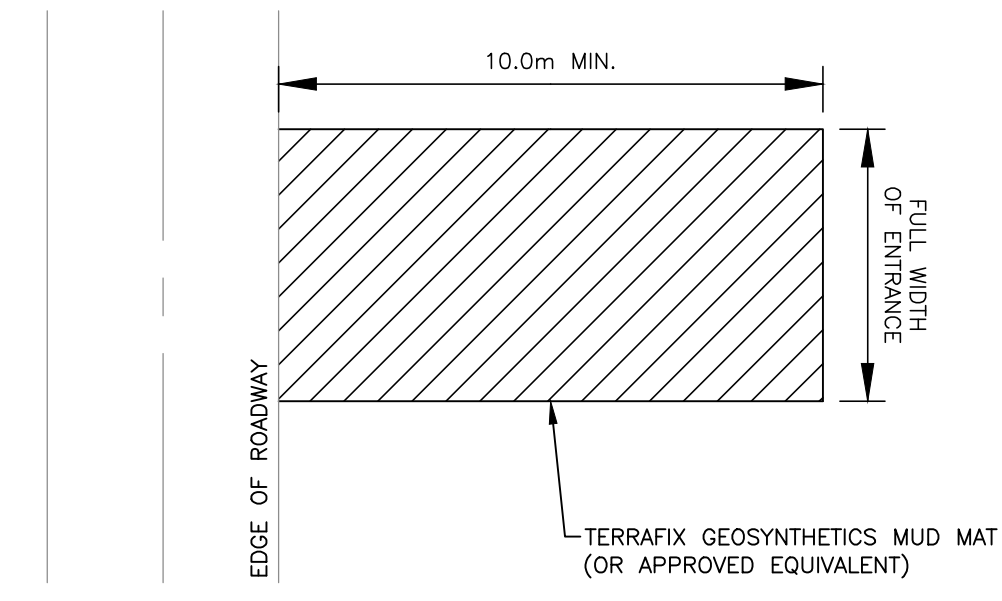
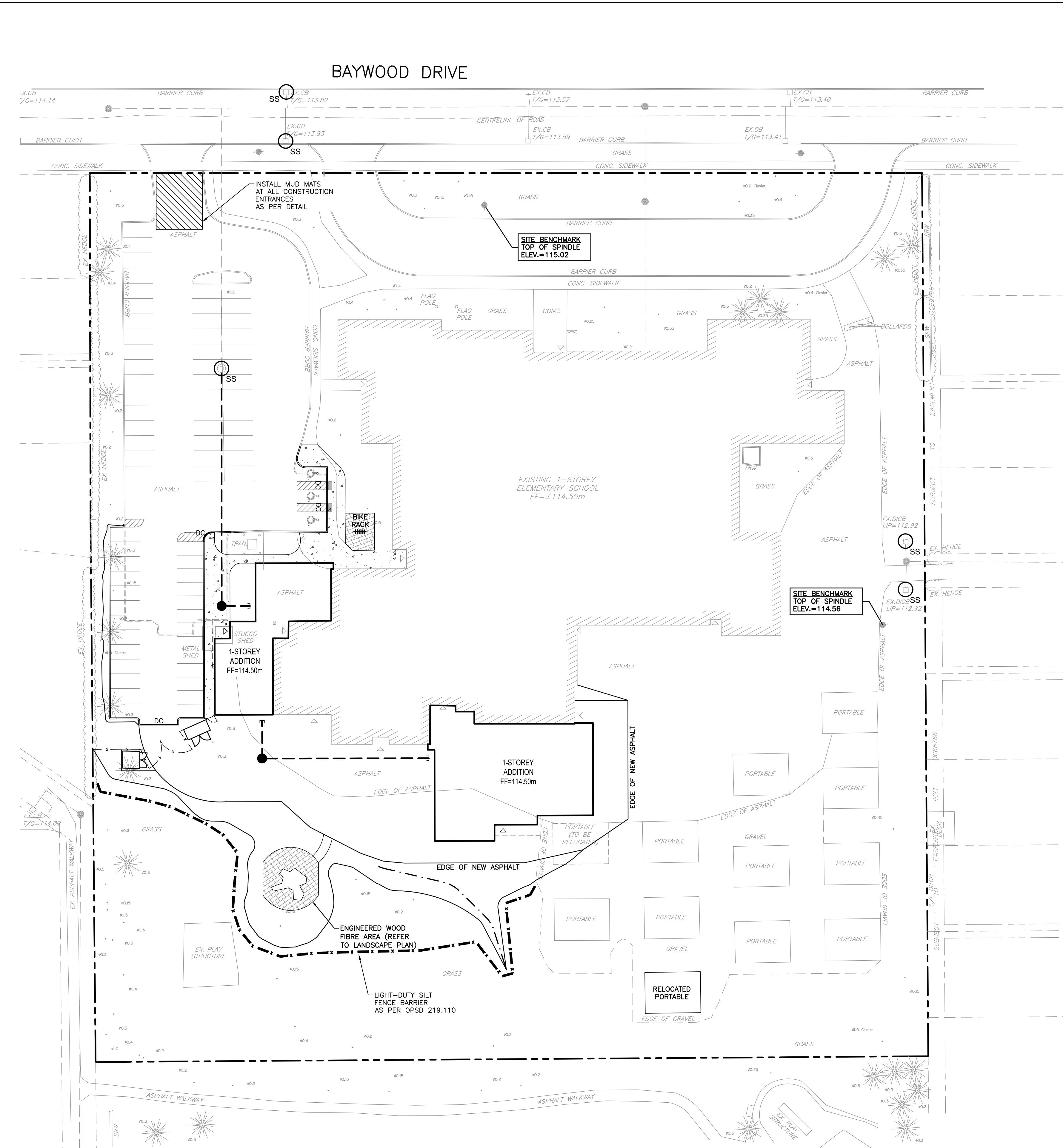
DESIGN	BLM
CHECKED	SG
DRAWN	BLM
CHECKED	SG
APPROVED	BLM

OTTAWA CATHOLIC SCHOOL BOARD

**GUARDIAN ANGELS
CATHOLIC SCHOOL**
4 BAYWOOD DRIVE, OTTAWA

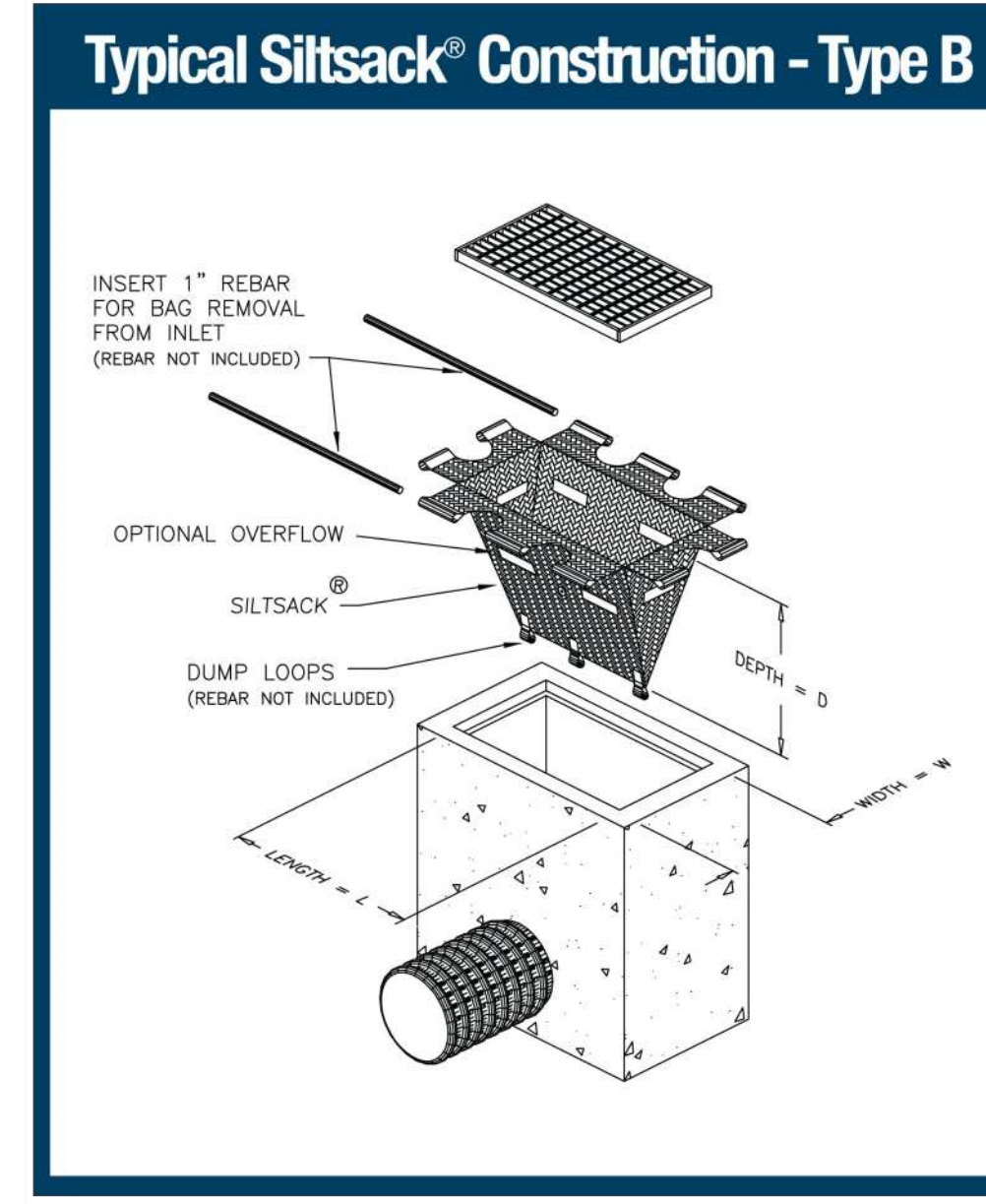
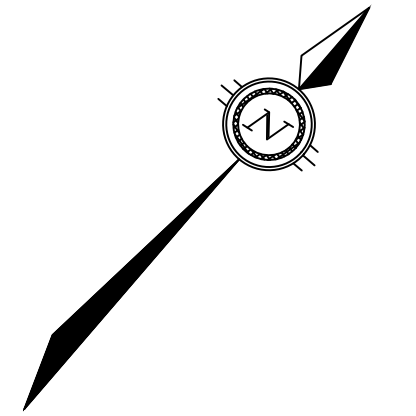
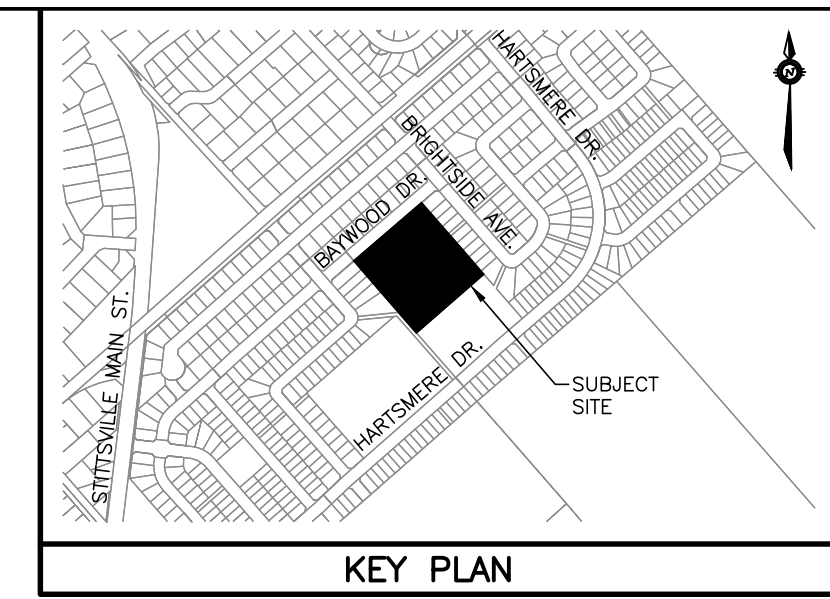
**EXISTING CONDITIONS
& REMOVALS PLAN**

PROJECT No.	26010
SURVEY	FARLEY, SMITH & DENNIS SURVEYING LTD.
DATED	APRIL 2026
DWG. No.	26018-R1



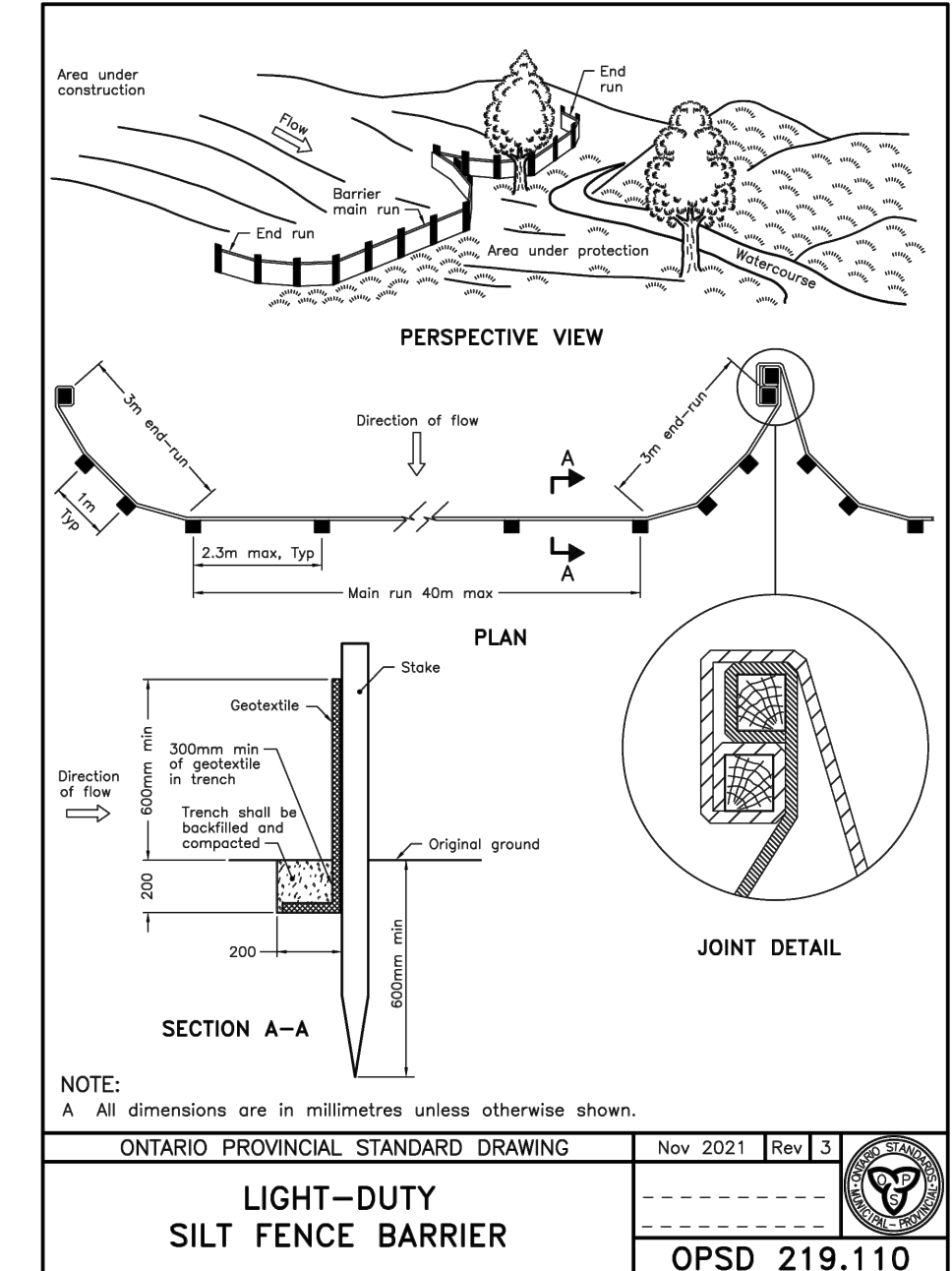
NOTES:
 1. SEDIMENT SHALL BE CLEANED FROM ROADWAYS AS REQUIRED.
 2. INSTALL AND MAINTAIN MUD MATS AT ALL CONSTRUCTION ENTRANCES.

MUD MAT DETAIL
 N.T.S.



- LEGEND**
- PROPERTY BOUNDARY
 - EXISTING CATCH BASIN
 - ⊕ EXISTING CATCH BASIN MANHOLE
 - EXISTING STORM SEWER & MANHOLE
 - STORM SEWER & MANHOLE
 - ▲ BUILDING ENTRANCE
 - - - SWALE
 - - - LIGHT-DUTY SILT FENCE BARRIER
 - SS SILT SACK (OR APPROVED EQUIVALENT)

- NOTES:**
- THE CONTRACTOR SHALL IMPLEMENT EROSION AND SEDIMENT CONTROL MEASURES TO PROVIDE FOR PROTECTION OF THE AREA DRAINAGE SYSTEM AND THE ULTIMATE RECEIVING WATERCOURSE DURING CONSTRUCTION ACTIVITIES. THE CONTRACTOR ACKNOWLEDGES THAT FAILURE TO IMPLEMENT APPROPRIATE EROSION AND SEDIMENT CONTROL MEASURES MAY BE SUBJECT TO PENALTIES IMPOSED BY ANY APPLICABLE REGULATORY AGENCY.
 - LIMIT THE EXTENT OF EXPOSED SOILS AT ANY GIVEN TIME.
 - RETAIN EXISTING VEGETATION TO THE GREATEST EXTENT POSSIBLE FOR AS LONG AS POSSIBLE.
 - MINIMIZE SLOPE LENGTH AND GRADIENT OF DISTURBED AREAS.
 - MAINTAIN OVERLAND SHEET FLOW AND AVOID CONCENTRATED FLOWS.
 - REDUCE RUNOFF VELOCITIES AND DETAIN RUNOFF TO PROMOTE SETTLING.
 - EROSION AND SEDIMENT CONTROL MEASURES SHALL BE MAINTAINED UNTIL VEGETATION HAS BEEN RE-ESTABLISHED IN ALL DISTURBED AREAS. RE-VEGETATE DISTURBED AREAS AS SOON AS POSSIBLE.
 - CONTRACTOR SHALL MINIMIZE THE AMOUNT OF STOCKPILED MATERIAL. ALL STOCKPILE SOIL SHALL BE AWAY (15 METRES OR GREATER) FROM WATERCOURSES, LID PRACTICES, DRAINAGE FEATURES AND TOP OF STEEP SLOPES. THE DOWNSTREAM SIDE OF ALL STOCKPILES SHALL BE PROTECTED WITH SILT FENCE. FIBRE ROLLS OR EQUIVALENT MEASURES PRIOR TO A RAINFALL EVENT.
 - SILT SACKS ARE TO BE PLACED UNDERNEATH THE FRAME AND COVER OF ALL PROPOSED AND EXISTING CATCH BASIN AND OPEN COVER STORM MANHOLES UNTIL CONSTRUCTION IS COMPLETED.
 - LIGHT-DUTY SILT FENCE BARRIERS SHALL BE INSTALLED AS PER OPSD 219.110 WHERE INDICATED AND MAINTAINED AS REQUIRED.
 - DURING ACTIVE CONSTRUCTION PERIODS, VISUAL INSPECTIONS SHALL BE UNDERTAKEN ON A WEEKLY BASIS AND AFTER MAJOR STORM EVENTS (>25mm RAIN IN 24 HOUR PERIOD) ON SEDIMENT CONTROL BARRIERS AND ANY DAMAGE REPAIRED IMMEDIATELY.
 - EROSION AND SEDIMENT CONTROL BARRIERS SHALL ALSO BE ASSESSED (AND REPAIRED AS REQUIRED) FOLLOWING SIGNIFICANT SNOWMELT EVENTS.
 - VISUAL INSPECTIONS SHALL ALSO BE UNDERTAKEN IN ANTICIPATION OF LARGE STORM EVENTS (OR A SERIES OF RAINFALL AND/OR SNOWMELT DAYS) THAT COULD POTENTIALLY YIELD SIGNIFICANT RUNOFF VOLUMES.
 - CARE SHALL BE TAKEN TO PREVENT DAMAGE TO EROSION AND SEDIMENT CONTROLS DURING CONSTRUCTION OPERATIONS.
 - IN SOME CASES, BARRIERS MAY BE REMOVED TEMPORARILY TO ACCOMMODATE THE CONSTRUCTION OPERATIONS. THE AFFECTED BARRIERS SHALL BE REINSTATED IMMEDIATELY AFTER CONSTRUCTION OPERATIONS ARE COMPLETED.
 - SEDIMENT CONTROL DEVICES SHALL BE CLEANED OF ACCUMULATED SEDIMENTATION AS REQUIRED AND REPLACED AS NECESSARY.
 - DURING THE COURSE OF CONSTRUCTION, IF THE ENGINEER BELIEVES THAT ADDITIONAL PREVENTION METHODS ARE REQUIRED TO CONTROL EROSION AND SEDIMENTATION, THE CONTRACTOR SHALL IMPLEMENT ADDITIONAL MEASURES, AS REQUIRED, TO THE SATISFACTION OF THE ENGINEER.
 - CONSTRUCTION AND MAINTENANCE REQUIREMENTS FOR EROSION AND SEDIMENT CONTROLS ARE TO COMPLY WITH OPSD 805.
 - MUD MATS SHALL BE INSTALLED AT ALL CONSTRUCTION ENTRANCES.
 - INSPECTION AND MAINTENANCE OF TEMPORARY ESC MEASURES SHALL CONTINUE UNTIL THEY ARE NO LONGER REQUIRED.
 - THE CONTRACTOR SHALL ENSURE THAT RECORDS OF INSPECTION ARE TAKEN, INCLUDING INSPECTOR'S NAME, DATE OF INSPECTION, VISUAL OBSERVATIONS, AND ANY NECESSARY REMEDIAL MEASURES TAKEN TO MAINTAIN INTERIM ESC MEASURES.



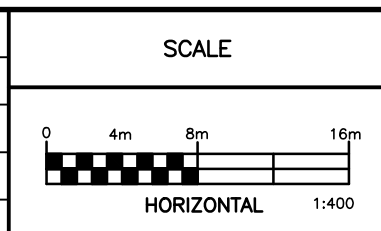
NOT FOR CONSTRUCTION

NOTES

THE POSITION OF ALL POLE LINES, CONDUITS, WATERMANS, SEWERS AND OTHER UNDERGROUND AND OVERGROUND UTILITIES AND STRUCTURES IS NOT NECESSARILY SHOWN ON THE CONTRACT DRAWINGS, AND WHERE SHOWN, THE ACCURACY OF THE POSITION OF SUCH UTILITIES AND STRUCTURES IS NOT GUARANTEED. BEFORE STARTING WORK, DETERMINE THE EXACT LOCATION OF ALL SUCH UTILITIES AND STRUCTURES AND ASSUME ALL LIABILITY FOR DAMAGE TO THEM.

PROPERTY BOUNDARIES HAVE BEEN DERIVED FROM THE TOPOGRAPHIC PLAN OF SURVEY BLOCK 1 REGISTERED PLAN 44-1054, CITY OF OTTAWA, PREPARED BY FARLEY, SMITH & DENIS SURVEYING LTD. 2026. ELEVATIONS ARE GEODETIC AND ARE REFERRED TO GEODETIC DATUM CGVD-1928:1978.

NO.	REVISION DESCRIPTION	DATE	BY
2	ISSUED FOR REVIEW	27/04/26	BLM
1	ISSUED FOR 85% REVIEW	22/04/26	BLM



Robinson
 Land Development

2936 Baseline Road,
 Suite 200, Ottawa, ON
 K2H 1B3
 (613) 592-6060 rcil.com

DESIGN	BLM
CHECKED	SG
DRAWN	BLM
CHECKED	SG
APPROVED	BLM

OTTAWA CATHOLIC SCHOOL BOARD

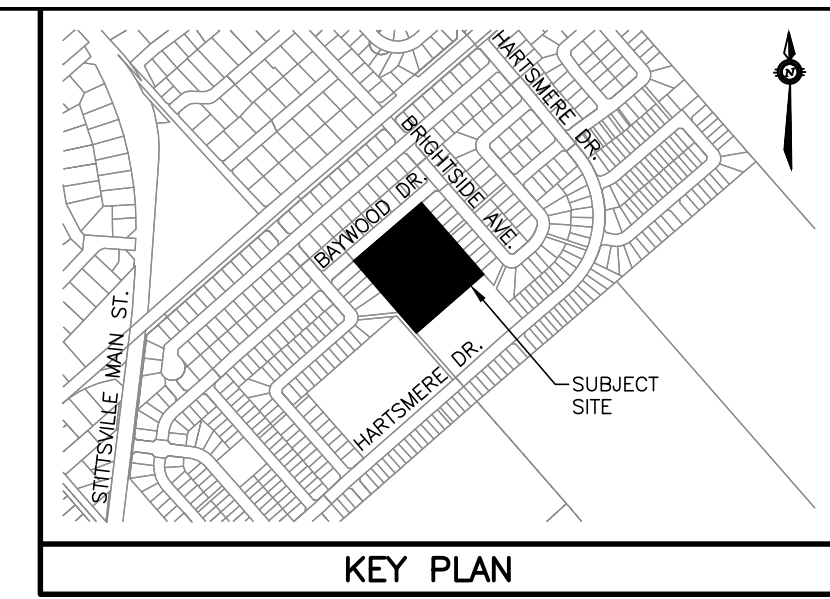
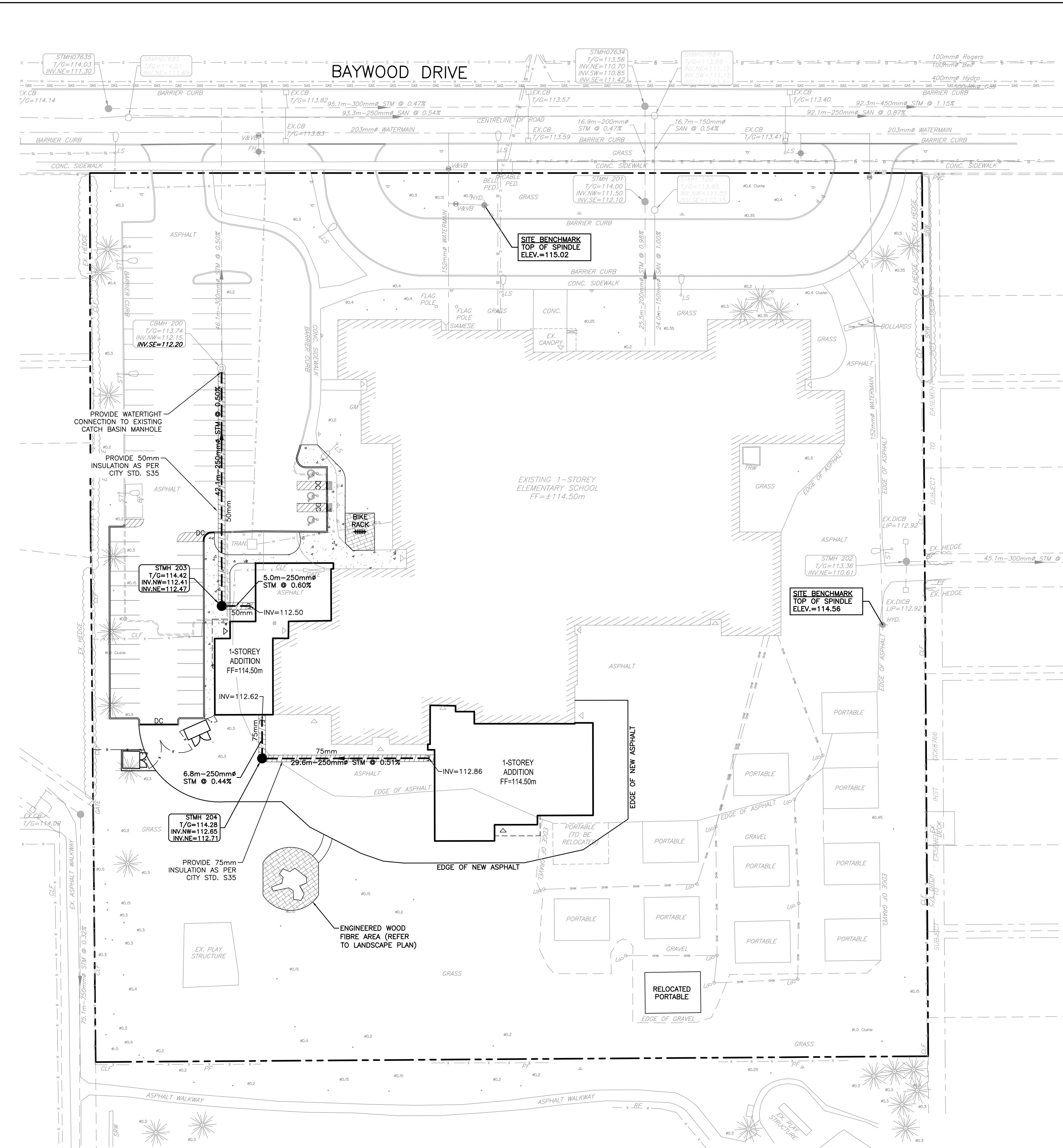
GUARDIAN ANGELS
 CATHOLIC SCHOOL
 4 BAYWOOD DRIVE, OTTAWA

EROSION AND SEDIMENT
 CONTROL PLAN

PROJECT No.
 26010

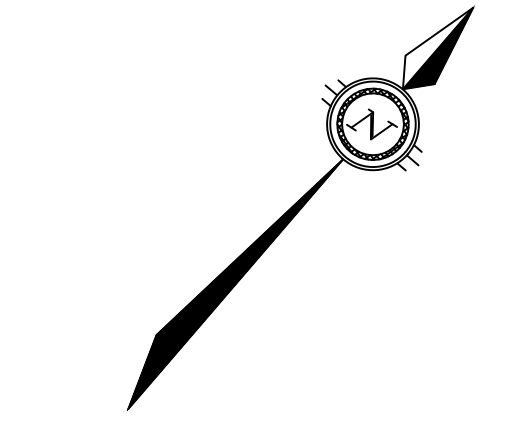
SURVEY
 FARLEY, SMITH & DENIS
 SURVEYING LTD.
 DATED
 APRIL 2026

DWG. No.
 26018-ESC1



INLET CONTROL DEVICE (ICD) TABLE

STRUCTURE	HEAD (m)	PEAK FLOW (L/s)	ORIFICE DIAMETER (mm)	ORIFICE TYPE
CBMH 200	1.71	54.0	139	CIRCULAR, SLIDE



- LEGEND**
- PROPERTY BOUNDARY
 - EXISTING ELEVATION
 - EXISTING HYDRANT
 - EXISTING CATCH BASIN
 - EXISTING CATCH BASIN MANHOLE
 - EXISTING WATERMAIN
 - EXISTING VALVE & VALVE BOX
 - EXISTING SIAMESE CONNECTION
 - EXISTING SANITARY SEWER & MANHOLE
 - EXISTING STORM SEWER & MANHOLE
 - EXISTING TREE
 - EXISTING UTILITY POLE AND GUY
 - EXISTING LIGHT STANDARD
 - EXISTING OVERHEAD UTILITIES
 - EXISTING UNDERGROUND HYDRO
 - EXISTING UNDERGROUND CABLE
 - EXISTING UNDERGROUND BELL
 - EXISTING UNDERGROUND GAS
 - EXISTING UNDERGROUND STREETLIGHTS
 - STORM SEWER & MANHOLE
 - BUILDING ENTRANCE
 - INSULATION & THICKNESS (CITY STD. S35)

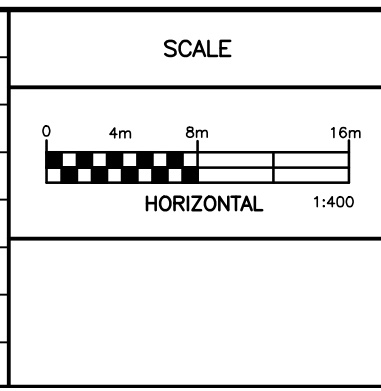
NOT FOR CONSTRUCTION

NOTES

THE POSITION OF ALL POLE LINES, CONDUITS, WATERMANS, SEWERS AND OTHER UNDERGROUND AND OVERGROUND UTILITIES AND STRUCTURES IS NOT NECESSARILY SHOWN ON THE CONTRACT DRAWINGS, AND WHERE SHOWN, THE ACCURACY OF SUCH UTILITIES AND STRUCTURES IS NOT GUARANTEED. BEFORE STARTING WORK, DETERMINE THE EXACT LOCATION OF ALL SUCH UTILITIES AND STRUCTURES AND ASSUME ALL LIABILITY FOR DAMAGE TO THEM.

PROPERTY BOUNDARIES HAVE BEEN DERIVED FROM THE TOPOGRAPHIC PLAN OF SURVEY BLOCK 1 REGISTERED PLAN 44-1054, CITY OF OTTAWA, PREPARED BY FARLEY, SMITH & DENIS SURVEYING LTD. 2026. ELEVATIONS ARE GEODETIC AND ARE REFERRED TO GEODETIC DATUM CGVD-1928:1978.

NO.	REVISION DESCRIPTION	DATE	BY
2	ISSUED FOR REVIEW	27/04/26	BLM
1	ISSUED FOR 85% REVIEW	22/04/26	BLM



Robinson
Land Development

2936 Baseline Road,
Suite 200, Ottawa, ON
K2H 1B3
(613) 592-6060 rcil.com

DESIGN	BLM
CHECKED	SG
DRAWN	BLM
CHECKED	SG
APPROVED	BLM

OTTAWA CATHOLIC SCHOOL BOARD

GUARDIAN ANGELS
CATHOLIC SCHOOL
4 BAYWOOD DRIVE, OTTAWA

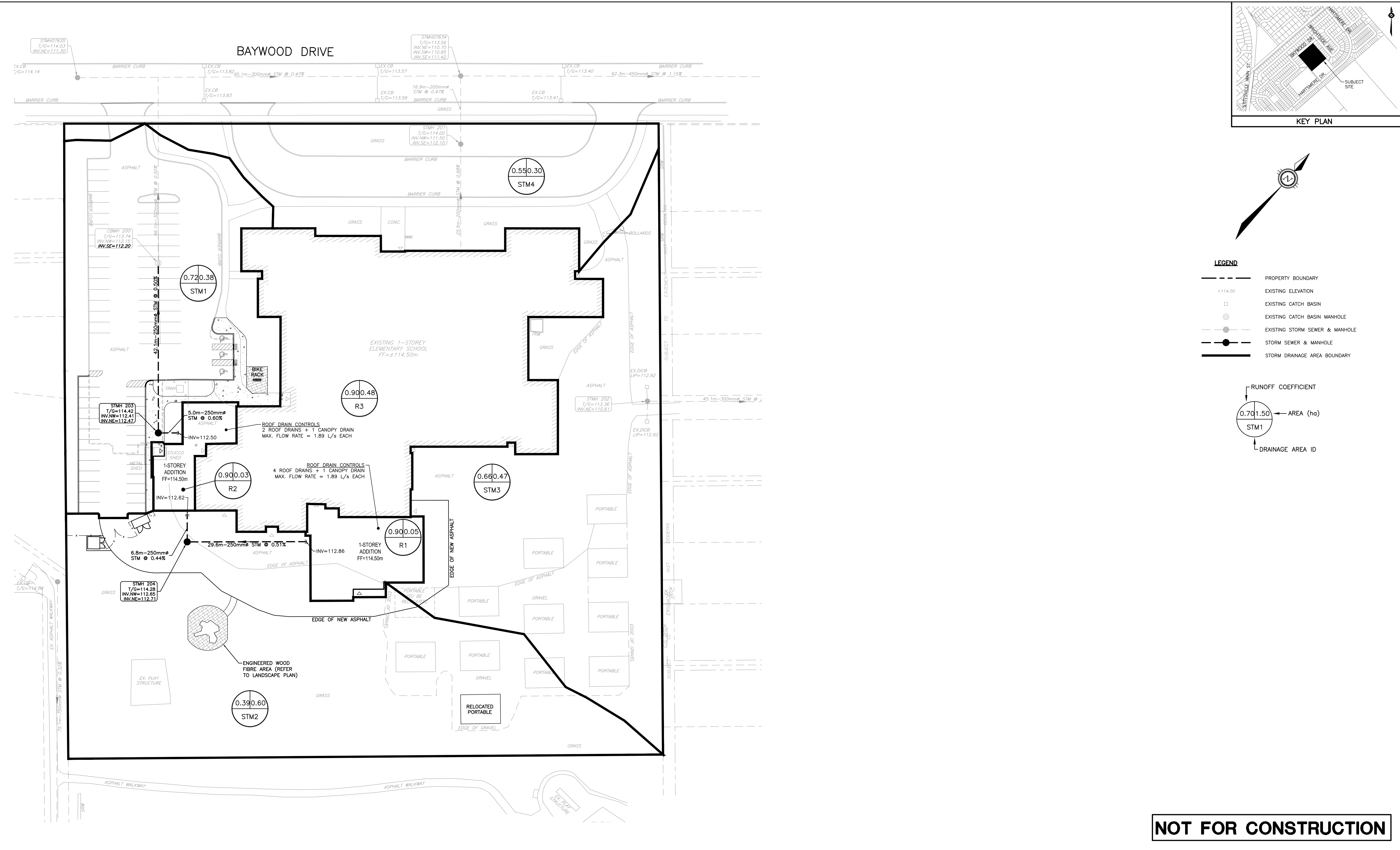
SERVICING PLAN

PROJECT No.
26010

SURVEY
FARLEY, SMITH & DENIS
SURVEYING LTD.

DATED
APRIL 2026

DWG. No.
26018-S1



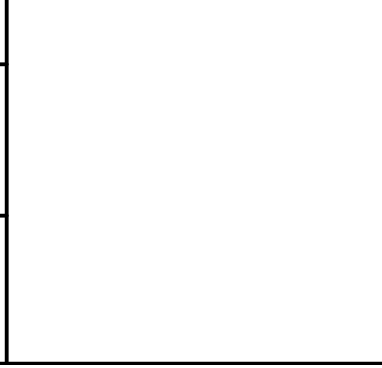
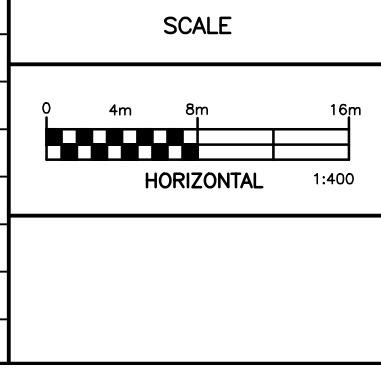
NOT FOR CONSTRUCTION

NOTES

THE POSITION OF ALL POLE LINES, CONDUITS, WATERMANS, SEWERS AND OTHER UNDERGROUND AND OVERGROUND UTILITIES AND STRUCTURES IS NOT NECESSARILY SHOWN ON THE CONTRACT DRAWINGS, AND WHERE SHOWN, THE ACCURACY OF THE POSITION OF SUCH UTILITIES AND STRUCTURES IS NOT GUARANTEED. BEFORE STARTING WORK, DETERMINE THE EXACT LOCATION OF ALL SUCH UTILITIES AND STRUCTURES AND ASSUME ALL LIABILITY FOR DAMAGE TO THEM.

PROPERTY BOUNDARIES HAVE BEEN DERIVED FROM THE TOPOGRAPHIC PLAN OF SURVEY BLOCK 1 REGISTERED PLAN 4M-1054, CITY OF OTTAWA, PREPARED BY FARLEY, SMITH & DENIS SURVEYING LTD. 2026. ELEVATIONS ARE GEODETIC AND ARE REFERRED TO GEODETIC DATUM CGVD-1928:1978.

NO.	REVISION DESCRIPTION	DATE	BY
2	ISSUED FOR REVIEW	27/04/26	BLM
1	ISSUED FOR 85% REVIEW	22/04/26	BLM



Robinson Land Development

2936 Baseline Road,
Suite 200, Ottawa, ON
K2H 1B3
(613) 592-6060 rcil.com

DESIGN	BLM
CHECKED	SG
DRAWN	BLM
CHECKED	SG
APPROVED	BLM

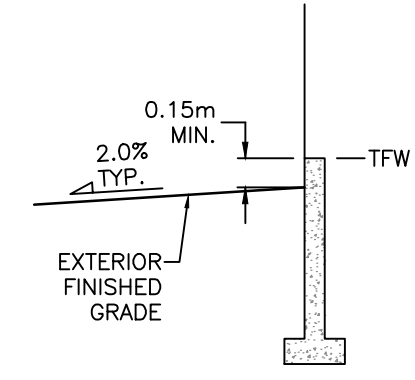
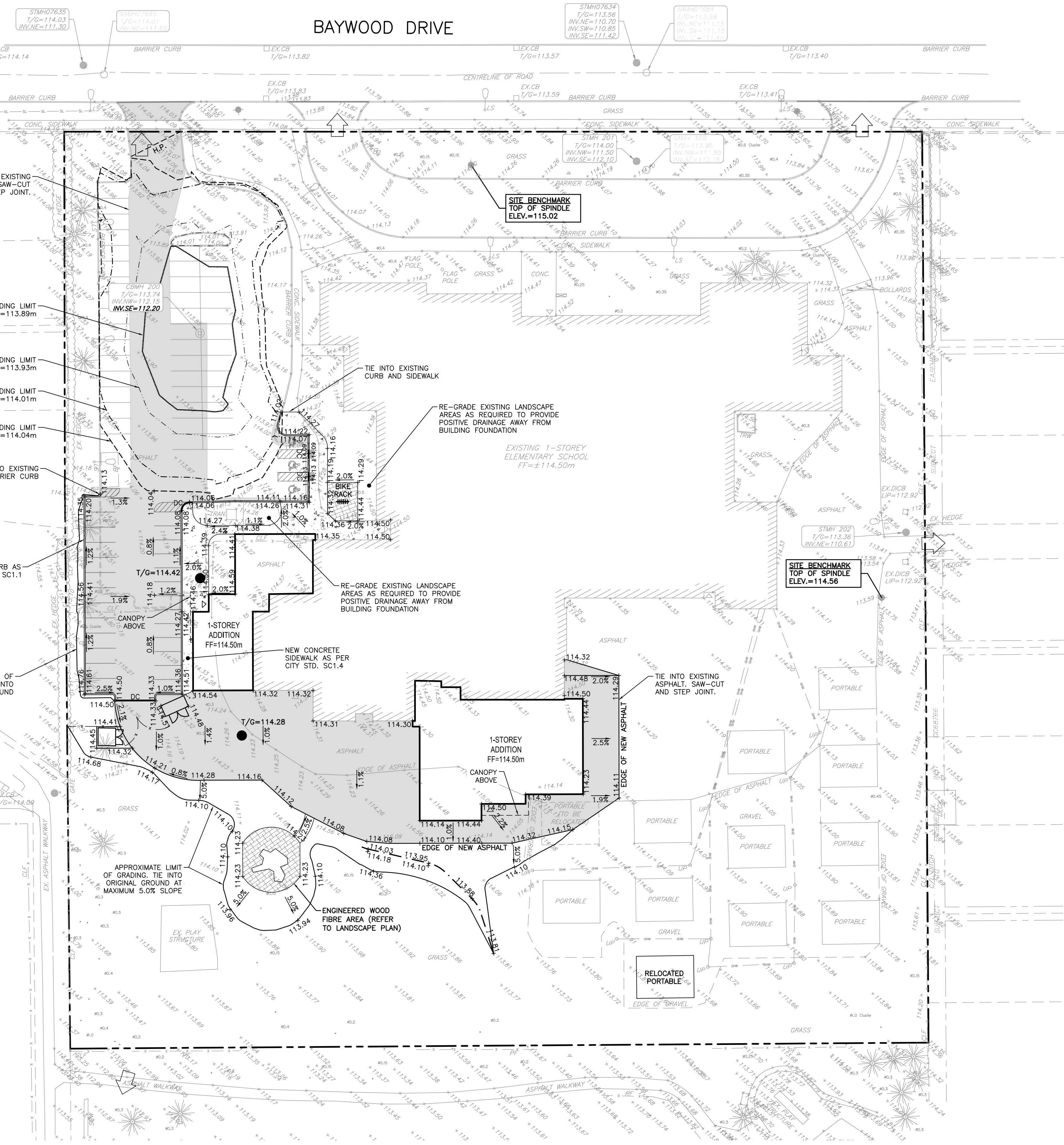
OTTAWA CATHOLIC SCHOOL BOARD

GUARDIAN ANGELS
CATHOLIC SCHOOL
4 BAYWOOD DRIVE, OTTAWA

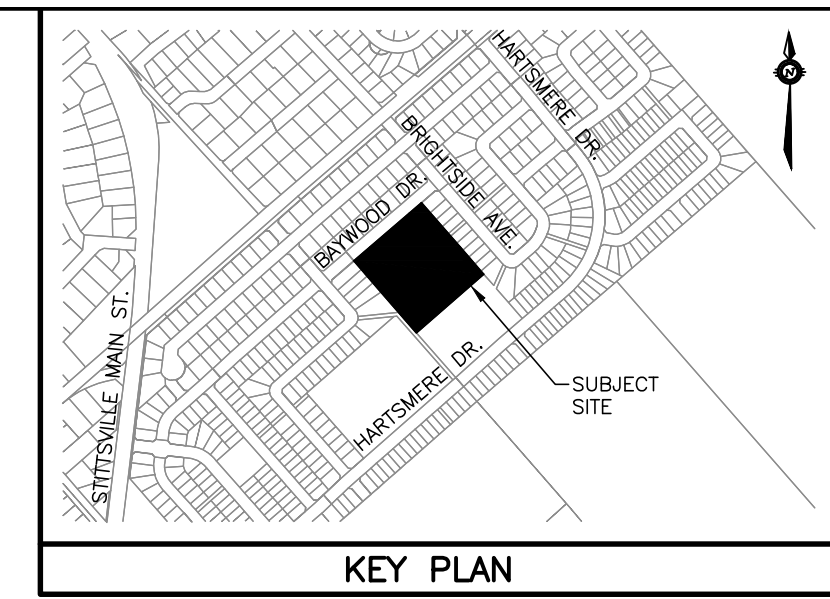
STORM DRAINAGE AREA PLAN

PROJECT No.	26010
SURVEY	FARLEY, SMITH & DENIS SURVEYING LTD.
DATED	APRIL 2026
DWG. No.	26018-STM1

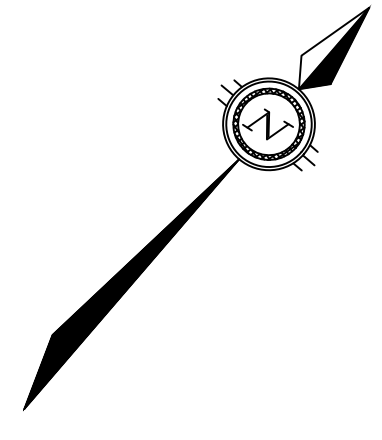
BAYWOOD DRIVE



TYPICAL FOUNDATION DETAIL
N.T.S.



KEY PLAN



LEGEND

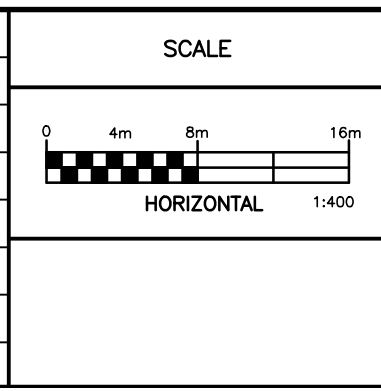
	PROPERTY BOUNDARY
	EXISTING ELEVATION
	PROPOSED GRADE
	PROPOSED DRAINAGE SLOPE & DIRECTION
	EXISTING HYDRANT
	EXISTING CATCH BASIN
	EXISTING CATCH BASIN MANHOLE
	EXISTING SANITARY MANHOLE
	EXISTING MANHOLE
	EXISTING TREE
	EXISTING UTILITY POLE AND GUY
	EXISTING LIGHT STANDARD
	STORM MANHOLE
	BUILDING ENTRANCE
	SWALE
	HIGH POINT
	2-YEAR PONDING LIMIT
	5-YEAR PONDING LIMIT
	100-YEAR PONDING LIMIT
	MAX. STATIC PONDING LIMIT
	DEPRESSED CURB WITH TWSI
	MAJOR OVERLAND FLOW ROUTE
	NEW ASPHALT

NOTES:
 1. PROPOSED PAVEMENT STRUCTURE TO BE SPECIFIED BY GEOTECHNICAL CONSULTANT PRIOR TO CONSTRUCTION.
 2. GEOTECHNICAL CONSULTANT TO INSPECT SUBGRADE PRIOR TO PLACEMENT OF GRANULAR SUB-BASE.

NOT FOR CONSTRUCTION

NOTES
 THE POSITION OF ALL POLE LINES, CONDUITS, WATERMANS, SEWERS AND OTHER UNDERGROUND AND OVERGROUND UTILITIES AND STRUCTURES IS NOT NECESSARILY SHOWN ON THE CONTRACT DRAWINGS, AND WHERE SHOWN, THE ACCURACY OF THE POSITION OF SUCH UTILITIES AND STRUCTURES IS NOT GUARANTEED. BEFORE STARTING WORK, DETERMINE THE EXACT LOCATION OF ALL SUCH UTILITIES AND STRUCTURES AND ASSUME ALL LIABILITY FOR DAMAGE TO THEM.
 PROPERTY BOUNDARIES HAVE BEEN DERIVED FROM THE TOPOGRAPHIC PLAN OF SURVEY BLOCK 1 REGISTERED PLAN 44-1054, CITY OF OTTAWA, PREPARED BY FARLEY, SMITH & DENIS SURVEYING LTD. 2026. ELEVATIONS ARE GEODETIC AND ARE REFERRED TO GEODETIC DATUM CGVD-1928:1978.

NO.	REVISION DESCRIPTION	DATE	BY
2	ISSUED FOR REVIEW	27/04/26	BLM
1	ISSUED FOR 85% REVIEW	22/04/26	BLM



Robinson
Land Development

2936 Baseline Road,
Suite 200, Ottawa, ON
K2H 1B3
(613) 592-6060 rcil.com

DESIGN	BLM
CHECKED	SG
DRAWN	BLM
CHECKED	SG
APPROVED	BLM

OTTAWA CATHOLIC SCHOOL BOARD
 GUARDIAN ANGELS
 CATHOLIC SCHOOL
 4 BAYWOOD DRIVE, OTTAWA

GRADING & DRAINAGE PLAN

PROJECT No.	26010
SURVEY	FARLEY, SMITH & DENIS SURVEYING LTD.
DATED	APRIL 2026
DWG. No.	26018-GR1

