

April 24, 2026

Our File: BCDC 977.3

David Lopez
Caivan
Barrhaven Conservancy Development Corp.
3713 Borrisokane Road
Ottawa, ON
K2J 4J4

Via E-mail: David.Lopez@caivan.com

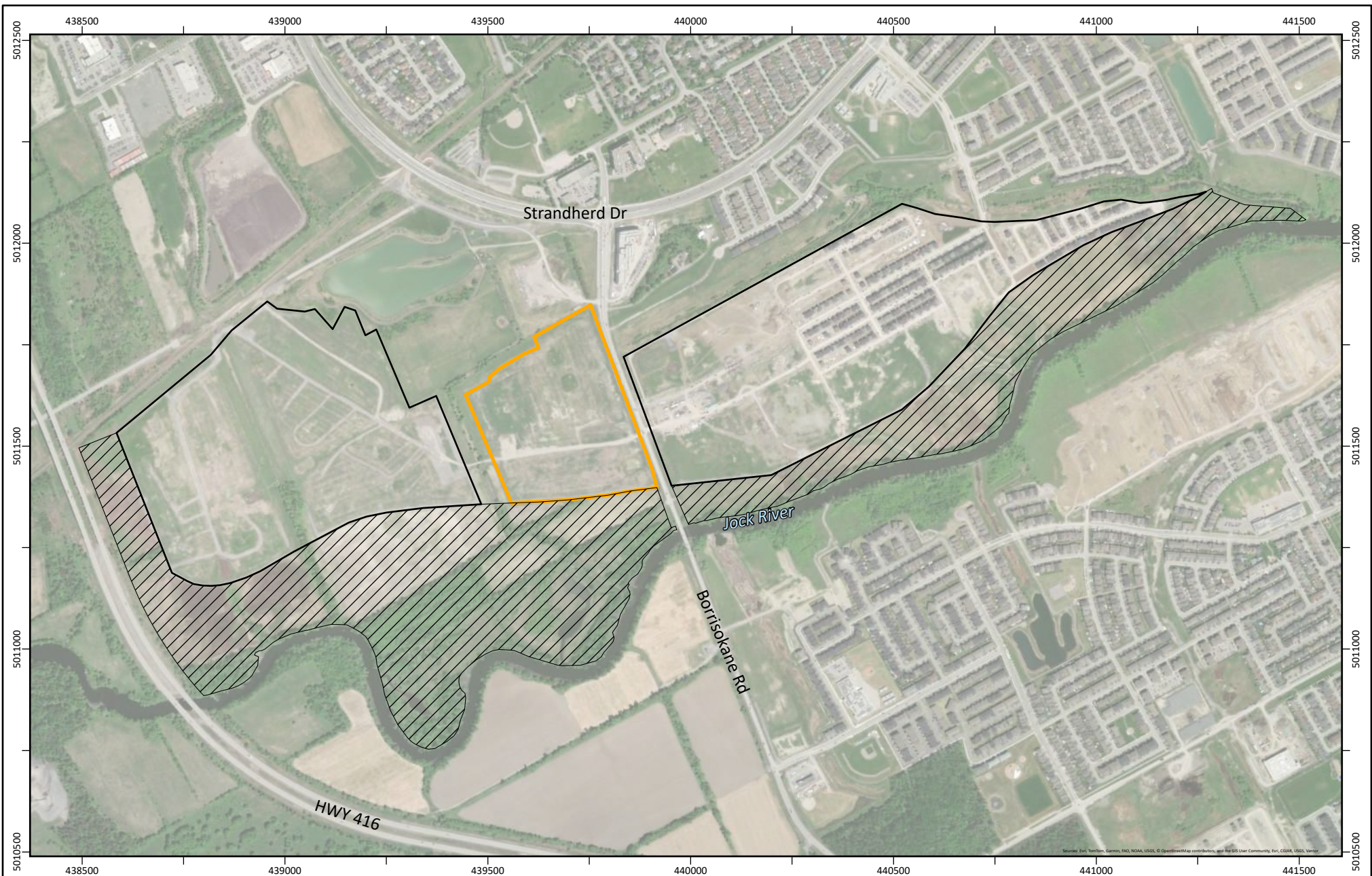
**SUBJECT: Tree Conservation Report Update for Barrhaven Conservancy West,
Phases 5 and 6**

1.0 INTRODUCTION

Barrhaven Conservancy Development Corporation (BCDC) is developing a new residential subdivision, Barrhaven Conservancy West, in the Barrhaven Conservancy Community area of Ottawa, Ontario. Phases 5 and 6 of Barrhaven Conservancy West are situated immediately west of Borrisokane Road and east of the Foster Watercourse, between Strandherd Drive and the Jock River (the "Site"; Figure 1). The approved draft plan of subdivision for this portion of the Barrhaven Conservancy development was supported by an Environmental Impact Statement (EIS) and Tree Conservation Report (TCR), prepared by Kilgour & Associates Ltd. (KAL) in 2021 and 2022, respectively. Note that Phases 5 and 6 were previously included in the Barrhaven Conservancy East community and the respective Barrhaven Conservancy East reports.

The City of Ottawa has requested a TCR update for the Phase 5 and 6 lands to document current conditions and determine whether ongoing work in the broader area has altered existing tree cover. KAL undertook a site visit on April 23, 2026, to characterize land cover and document the presence of trees on the Site.

This TCR update, consistent with City of Ottawa guidance documents, defines a "tree" as any species of woody perennial plant, including its root system, which has reached or can reach a minimum height of at least 450 cm at physiological maturity. The critical root zone (CRZ) is the extent of a tree's root system and is calculated as diameter at breast height (DBH) x 10 cm.

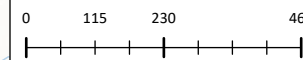


Legend

- Phase 5 & 6
- Broader BCDC Development Lands
- Jock River Corridor



Figure 1. Site Context



Spatial Reference:
 PCS: WGS 1984 UTM Zone 18N
 Map Units: Meter

Project: BCDC 977.3
 Map File Name: BCBC 977.3
 Date Exported: 4/24/2026 9:58 AM



2.0 EXISTING CONDITIONS

Historically, the Phases 5 and 6 lands, along with the majority of the broader Barrhaven Conservancy area, has been subject to active agriculture, with some treed cover along hedgerows between fields (KAL, 2021, 2022). The Initial EIS (KAL, 2021) identified that all land areas proposed for residential development within the Barrhaven Conservancy East community had been fully cleared of all trees and other vegetation, and had been completely regraded during the 2019 cut/fill works that took place across the broader BCDC area.

Field observations made on April 23, 2026, found that there are no trees present on the Site. Dominant groundcover includes a mixture of grasses and fobs, including Japanese Bristle Grass (*Setaria faberi*), Velvetleaf (*Abutilon theophrasti*), Common Dandelion (*Taraxacum officinale*), and Scentless Chamomile (*Tripleurospermum inodorum*; Figure 2).



Figure 2 Central cleared area of the Phase 5 and 6 lands, looking south

Offsite hedgerows to the north, west, and south include Manitoba Maple (*Acer negundo*) and American Elm (*Ulmus americana*); however, these trees are set back sufficiently from the Site boundary that it is not anticipated their critical root zones will extend onto the Phase 5 and 6 lands.

Small, planted trees are situated along the east edge of the Site, adjacent to Borrisokane Road (Figure 3). The planted trees include Eastern White Pine (*Pinus strobus*), Tamarack (*Larix laricina*), Paper Birch (*Betula papyrifera*), and Maidenhair Tree (*Ginkgo biloba*). All planted trees have DBH measurements less than 10 cm and therefore do not meet the tree size criteria.





Figure 3 Small planted trees along the east boundary of the Phase 5 and 6 lands

3.0 CLOSURE

This report was prepared for exclusive use by Barrhaven Conservancy Development Corporation and may be distributed only by Barrhaven Conservancy Development Corporation. Questions relating to the data and interpretation can be addressed to the undersigned.

Respectfully submitted,

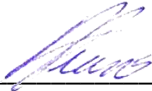
KILGOUR & ASSOCIATES LTD.



Kesia Miyashita, MSc., P.Biol.
Senior Biologist
E-mail: kmiyashita@kilgourassociates.com
16-2285 St. Laurent Blvd, Ottawa, ON, K1G 4Z6
Office: 613-260-5555
Direct: 613-367-5546



Maren Nielsen, BES, EMA
Senior Biologist and Project Manager
E-mail: mnielsen@kilgourassociates.com
16-2285 St. Laurent Blvd, Ottawa, ON, K1G 4Z6
Office: 613-260-5555
Direct: 613-367-5562



Anthony Francis, PhD
Director of Land Development
E-mail: afrancis@kilgourassociates.com
16-2285 St. Laurent Blvd, Ottawa, ON, K1G 4Z6
Office: 613-260-5555
Direct: 613-367-5556

