

DRAWING NOTES

① TYPICAL:
DISCONNECT AND REMOVE LIGHTING FIXTURE MARKED AS 'R'. FIXTURE TO BE REPLACED WITH NEW AS INDICATED IN E3.2. COORDINATE TIMING OF WORK WITH ALL TRADES.
FOR DEVICES MARKED AS 'R1', DISCONNECT AND REMOVE LIGHTING FIXTURE C/W WIRING AND CONDUIT BACK TO NEAREST JUNCTION BOX.

FOR / POUR
Client - Department
Infrastructure and Water Services Department
Design & Construction



1688 Woodward Dr.
Ottawa Ontario
Canada K2C 3R6

613 727-5111
613 727-5115
www.gwal.com

Voice
Fax
Web

6			
5			
4			
3			
2	ISSUED FOR SITE PLAN CONTROL	2020/04/14	
1	ISSUED FOR 30% SUBMISSION	2019/02/20	

NUMBER	MILESTONE / FAT SALLANT	DATE	Y/M/D	INITIALS
DESIGNED BY / CONCEIVED PAR		CHECKED BY / VERIFIÉ PAR		
M.M. VASQUEZ		E. DROUIN		
DRAWN BY / DÉSSINÉ PAR		SCALE / ÉCHELLE		
K.A.		AS NOTED		

① DRAWING TITLE
SCALE: A1:1
SHEET NUMBER

THIS DRAWING IS THE PROPERTY OF THE CITY OF OTTAWA AND ALL COPYRIGHT IS RESERVED. DIMENSIONS ON DRAWING ARE FOR ESTIMATING PURPOSES ONLY. IT IS THE RESPONSIBILITY OF EACH CONTRACTOR AND SUB-CONTRACTOR OR CONSULTANT TO CHECK AND VERIFY ALL DIMENSIONS AND CONDITIONS ON SITE. NOTIFY OWNER OF ANY ERRORS OR OMISSIONS PRIOR TO COMMENCING THE WORK. DO NOT SCALE THE DRAWINGS.

CE DESSIN CONSTITUE LA PROPRIÉTÉ DE LA VILLE D'OTTAWA ET TOUT DROIT D'AUTEUR EST RÉSERVÉ. LES DIMENSIONS UTILISÉES SONT À DES FINS D'ESTIMATION SEULEMENT. IL INCOMBE À CHAQUE ENTREPRENEUR, SOUS-CONTRACTANT OU CONSULTANT DE VÉRIFIER TOUTES LES DIMENSIONS ET LES CONDITIONS SUR LE QUANTER. VOUS LEZ, INFORMER LE PROPRIÉTAIRE DE TOUTE ERREUR OU OMISSION AVANT D'ENTAMER LES TRAVAUX. NE DÉSSINEZ PAS LES PLANS À L'ÉCHELLE.

ARCHITECT / ARCHITECTE

CONSULTANT / EXPERT-CONSEIL

CONSULTANT / EXPERT-CONSEIL

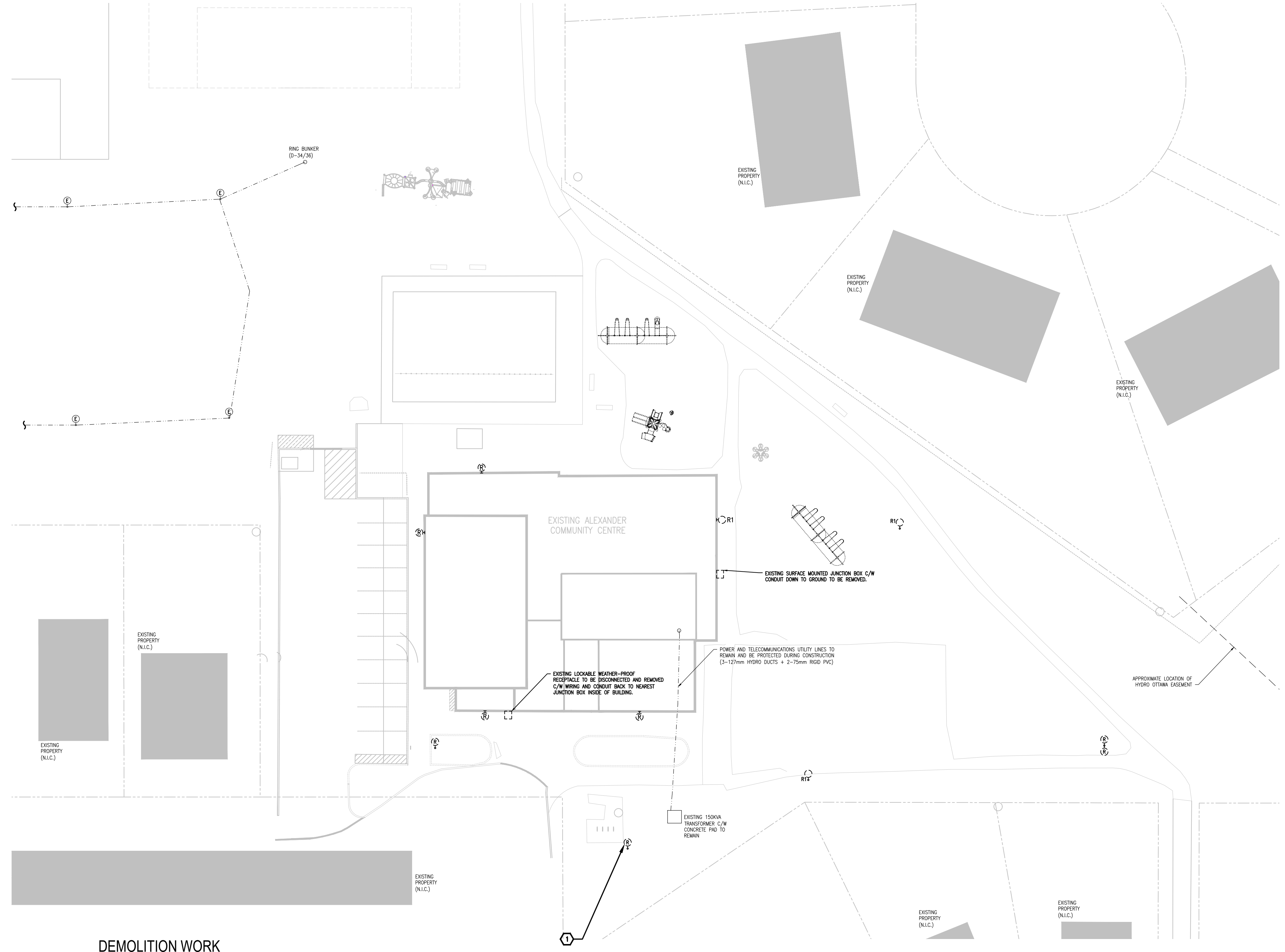
CONSULTANT / EXPERT-CONSEIL

PROJECT / LOCATION / PROJET / ENDROIT
ALEXANDER COMMUNITY CENTRE EXPANSION

950 Silver Street
OTTAWA, ONTARIO

DRAWING / DESSIN
ELECTRICAL SITE PLAN DEMOLITION WORK

BUSINESS ENTITY / NUMÉRO DE LEVANTÉ BUILDING NUMBER / NUMÉRO DU BÂTIMENT	SHEET NO. / FEUILLE NO. E3.1
CITY PROJECT NO. / NUMÉRO DE PROJET 2025-565	



①
E3.1 1:250

DEMOLITION WORK SITE PLAN

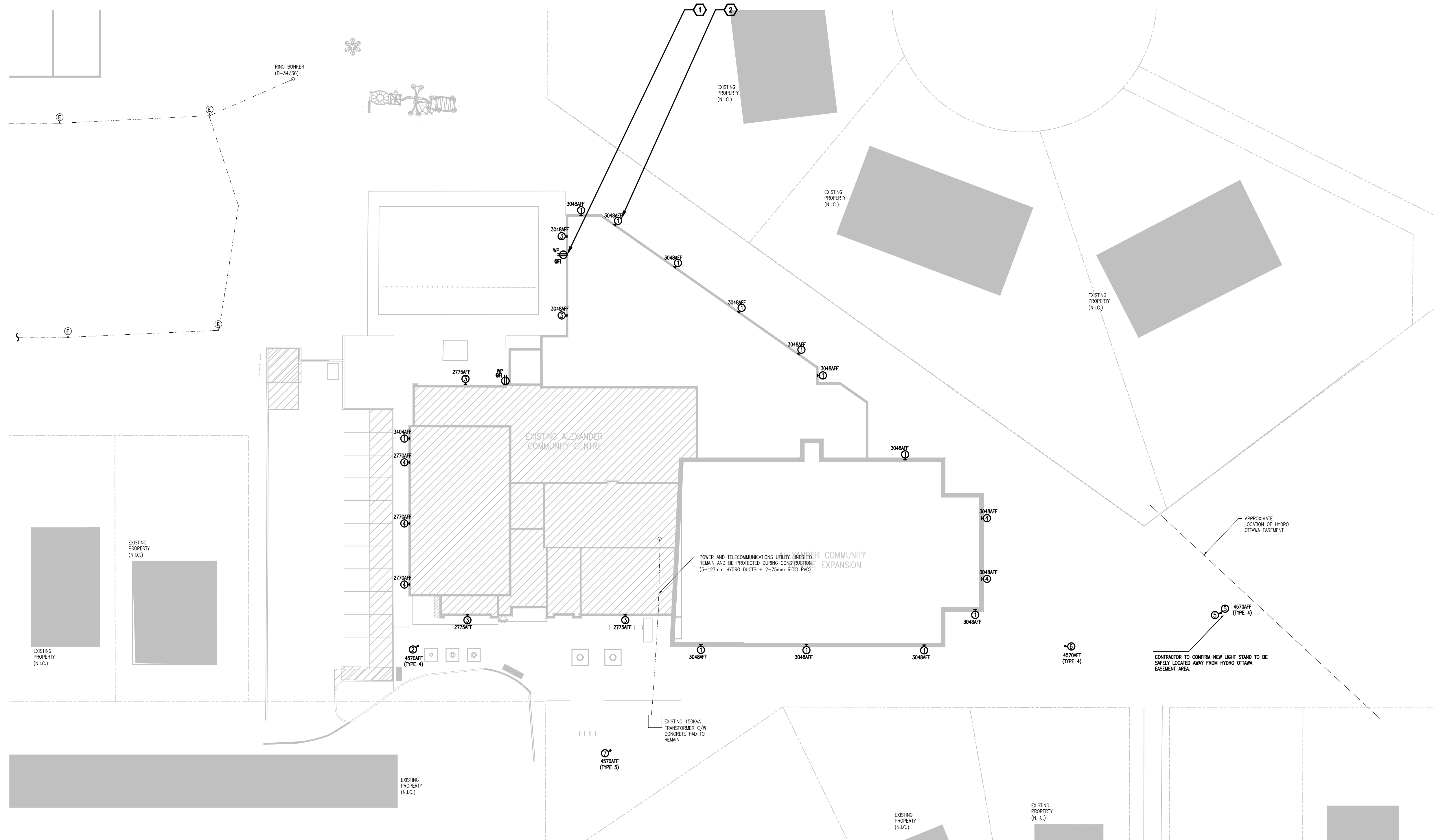
LIGHTING FIXTURE SCHEDULE (OUTDOORS)								
TYPE	DESCRIPTION	BASIS OF DESIGN	TYPE	WATTS	CLOUR	VOLT	MOUNTING	REMARKS
1	WALL PACK	BROMO AE-WP-BR-40W-CA	LED	16.2W	4000K	120V	WALL MOUNT	COORDINATE FINISH COLOUR WITH ARCHITECTURAL TRADES
2	AREA LIGHT	RIZZUTO AE-00-RZ-100W-X-XX	LED	100W	4000K	120V	POST TOP	COORDINATE FINISH COLOUR WITH ARCHITECTURAL TRADES
3	WALL PACK	MAUNA AE-WP-MN-70W-TCP-CA-XX	LED	60W	TBD	120V	WALL MOUNT	COORDINATE LAMP COLOUR, COLUMN HEIGHT AND FINISH WITH ARCHITECTURAL TRADES
4	WALL PACK	BROMO AE-WP-BR-40W-TCP-CA	LED	28W	TBD	120V	WALL MOUNT	COORDINATE LAMP COLOUR, COLUMN HEIGHT AND FINISH WITH ARCHITECTURAL TRADES
5	LIGHT STANDING HEAD	GENESYS AE-00-GY-300UV-D-XX-T4	LED	300W	TBD	120V	POST TOP	COORDINATE LAMP COLOUR, COLUMN HEIGHT AND FINISH WITH ARCHITECTURAL TRADES
6	LIGHT STANDING HEAD	GENESYS AE-00-GY-080XV-D-XX-T4-D-XX-U-SHIELD	LED	80W	TBD	120V	POST TOP	COORDINATE LAMP COLOUR, COLUMN HEIGHT AND FINISH WITH ARCHITECTURAL TRADES
7	LIGHT STANDING HEAD	GENESYS AE-00-GY-080UV-D-XX-T5-X-XX	LED	80W	TBD	120V	POST TOP	COORDINATE LAMP COLOUR, COLUMN HEIGHT AND FINISH WITH ARCHITECTURAL TRADES

NOTES:
 1. FIXTURES TO BE PROVIDED WITH ALL HARDWARE, ANCILLARIES AND FIXINGS FOR A COMPLETE INSTALLATION.
 2. CONTRACTOR TO PROVIDE FULL LIGHTING PHOTOMETRICS PRIOR TO PROCUREMENT OF LIGHT FIXTURES FOR CONSULTANT APPROVAL.

DRAWING NOTES

① TYPICAL:
 PROVIDE NEW ELECTRICAL DEVICE AS INDICATED. REFER TO E0.1 FOR SYMBOL LEGENDS. COORDINATE EXACT LOCATION AND HEIGHT WITH ARCHITECTURAL TRADES.

② TYPICAL:
 PROVIDE NEW LIGHTING FIXTURE AS INDICATED. REFER TO LIGHTING FIXTURE SCHEDULE FOR MORE INFORMATION. COORDINATE EXACT LOCATION AND HEIGHT WITH ARCHITECTURAL TRADES.



Ottawa
 INFRASTRUCTURE SERVICES
 DESIGN AND CONSTRUCTION

SERVICES D'INFRASTRUCTURE
 DIRECTION DE CONCEPTION ET DE CONSTRUCTION

FOR / POUR
 Client - Department
 Infrastructure and Water Services Department
 Design & Construction

GWAL 70 years
 a division of Englobe

1688 Woodward Dr.
 Ottawa Ontario
 Canada K2C 3R6

613 727-5111 Voice
 613 727-5115 Fax
 www.gwal.com Web

6			
5			
4			
3			
2	ISSUED FOR SITE PLAN CONTROL	2020/04/14	
1	ISSUED FOR 30% SUBMISSION	2020/03/20	
NUMBER	MILESTONE / FAT SAILLANT	DATE	Y/M/D (MMJ)
DESIGNED BY / CONCEPTEUR	M.M. VASQUEZ	CHECKED BY / VERIFIE PAR	E. DROUIN
DRAWN BY / DRESSEUR PAR	K.A.	SCALE / ECHELLE	AS NOTED

① DRAWING TITLE
 SCALE:
 SHEET NUMBER

THIS DRAWING IS THE PROPERTY OF THE CITY OF OTTAWA AND ALL COPYRIGHT IS RESERVED. DIMENSIONS ON DRAWING ARE FOR ESTIMATING PURPOSES ONLY. IT IS THE RESPONSIBILITY OF EACH CONTRACTOR AND SUB-CONTRACTOR OR CONSULTANT TO CHECK AND VERIFY ALL DIMENSIONS AND CONDITIONS ON SITE. NOTIFY OWNER OF ANY ERRORS OR OMISSIONS PRIOR TO COMMENCING THE WORK. DO NOT SCALE THE DRAWINGS.

CE DESSIN CONSTITUE LA PROPRIETE DE LA VILLE D'OTTAWA ET TOUT DROIT D'AUTEUR EST RESERVE. LES DIMENSIONS UTILISEES LE SONT A DES FINS D'ESTIMATION SEULEMENT. IL INCOMBE A CHAQUE ENTREPRENEUR, SOUS-CONTRACTANT OU CONSULTANT DE VERIFIER TOUTES LES DIMENSIONS ET LES CONDITIONS SUR LE QUANTIER. NOTifieZ L'INFORMER LE PROPRIETAIRE DE TOUTE ERREUR OU OMISSION AVANT D'ENTAMER LES TRAVAUX. NE DRESSEZ PAS LES PLANS A L'ECHELLE.

ARCHITECT / ARCHITECTE

CONSULTANT / EXPERT-CONSEIL

LICENSED PROFESSIONAL ENGINEER
 APR 14 2026
 R. M. BOIVIN
 100122674
 PROVINCE OF ONTARIO

CONSULTANT / EXPERT-CONSEIL

PROJECT / LOCATION / PROJET / ENDROIT
ALEXANDER COMMUNITY CENTRE EXPANSION

950 Silver Street
 OTTAWA, ONTARIO

DRAWING / DESSIN
ELECTRICAL SITE PLAN NEW WORK

BUSINESS ENTITY / NUMERO DE LEVETTE
 BUILDING NUMBER / NUMERO DU BATIMENT

CITY PROJECT NO. / NUMERO DE PROJET
 2025-565

SHEET NO. / FEUILLE NO.
E3.2

NEW WORK SITE PLAN
 1
 E3.2 1:250