

**Ottawa (Head Office)**

1800 Bantree Street  
Ottawa, Ontario K1B 5L6

☎ 613.745.2444  
☎ 613.745.9994

www.cwwcanada.com  
1.866.695.0155

**Montreal**

7562, Côte-de-Liesse  
St-Laurent, Quebec H4T 1E7

☎ 514.738.2666  
☎ 514.738.9762



INTEGRATED SEWER SOLUTIONS

# SEWER CCTV INSPECTION REPORT

## City of Ottawa

### 960 Silver St Ottawa, ON

**Work Order:**  
152188

**Completion Date**  
April 1 2026

**Sewer Type**  
Sanitary & Storm

**Inspected Length:**  
Various

THE WAY IS CLEAR™

- Watermain Swabbing
- Hydro Vacuum Excavation
- CCTV Inspection of Sewers

- Plumbing & Drain Services
- Structural Rehabilitation of Manholes
- Cured-in-Place-Pipe Lining & Spot Repairs

- Grouting, Test & Seal Joints, Manholes & Services
- Lateral Sewer Inspection & Locates From Main
- Sewer Cleaning, Flushing & Pumping

# Table of contents



	Page
1. Index of pipes .....	3
2. Pipe summary and condition details .....	4

# 1. Index of pipes

3 items

Inspected length : 67.50

Total length : 0.00

Pipe	Start/End	Direction	Road	Date	Inspected	Total	Page
Cleanout to City Main	Cleanout --> City Main	Direction of flow	960 Silver St	01/04/2026, 12:00 PM	21.5		<a href="#">4</a>
Manhole to 21.0 Meters (Building)	21.0 Meters (Building) --> Manhole	Against flow	960 Silver St	01/04/2026, 12:00 PM	21		<a href="#">8</a>
Stack Cleanout to Foundation	Stack Cleanout --> Foundation	Direction of flow	960 Silver St	01/04/2026, 12:00 PM	25		<a href="#">12</a>

## 2. Pipe summary and condition details

### Pipe identification

<b>Pipe:</b> Cleanout to City Main	<b>Direction of inspection:</b> Cleanout --> City Main
<b>Direction of flow:</b> Cleanout --> City Main	<b>Direction:</b> Direction of flow

### Pipe location

<b>Road:</b> 960 Silver St	<u>UPSTREAM</u>	<u>DOWNSTREAM</u>
<b>Drainage Area:</b>	<b>Easting (X):</b>	<b>Easting (X):</b>
<b>City:</b> Ottawa	<b>Northing (Y):</b>	<b>Northing (Y):</b>
<b>Location:</b>	<b>Elevation (Z):</b>	<b>Elevation (Z):</b>
<b>Owner:</b> City of Ottawa	<b>Vertical Datum:</b>	

### Pipe characteristics

<b>Category:</b> Sanitary	<b>Size:</b> 4
<b>Material:</b> Cast iron	<b>Width:</b>
<b>Lining:</b>	<b>Total length:</b>
<b>Type:</b> Lateral	<b>Pipe unit length:</b>
<b>Invert (upstream):</b>	<b>Year laid:</b>
<b>Depth (upstream):</b>	<b>Invert (downstream):</b>
<b>Cover level (upstream):</b>	<b>Depth (downstream):</b>
	<b>Cover level (downstream):</b>

### Additional details

<b>Date:</b> 01/04/2026, 12:00 PM	<b>Survey Abandoned:</b>
<b>Project Number:</b> CCTV Inspection	<b>Inspected length:</b> 21.5
<b>Contractor project #:</b>	<b>Pre-cleaning:</b> <input type="checkbox"/>
<b>Client:</b> City of Ottawa	<b>Blocked flow:</b> <input type="checkbox"/>
<b>Purpose:</b>	<b>Regular CCTV:</b> <input type="checkbox"/>
<b>Operator:</b> Don	<b>Reinspect with ZOOM:</b> <input type="checkbox"/>
<b>Analyst:</b>	<b>Medium #:</b>
	<b>Start position:</b>
	<b>End position:</b>

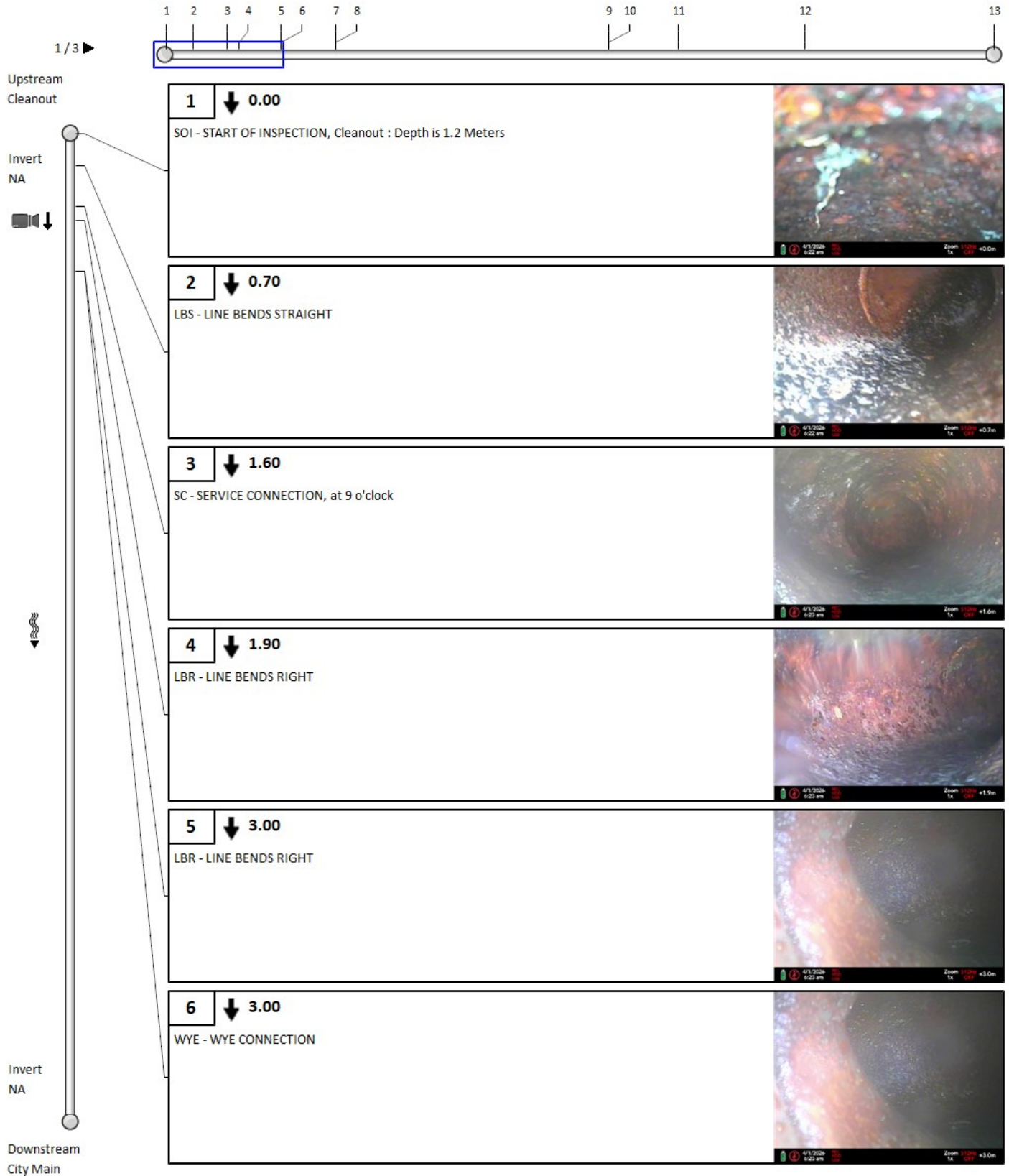
### Comments

CCTV Inspection From Sanitary Cleanout to City Main
---

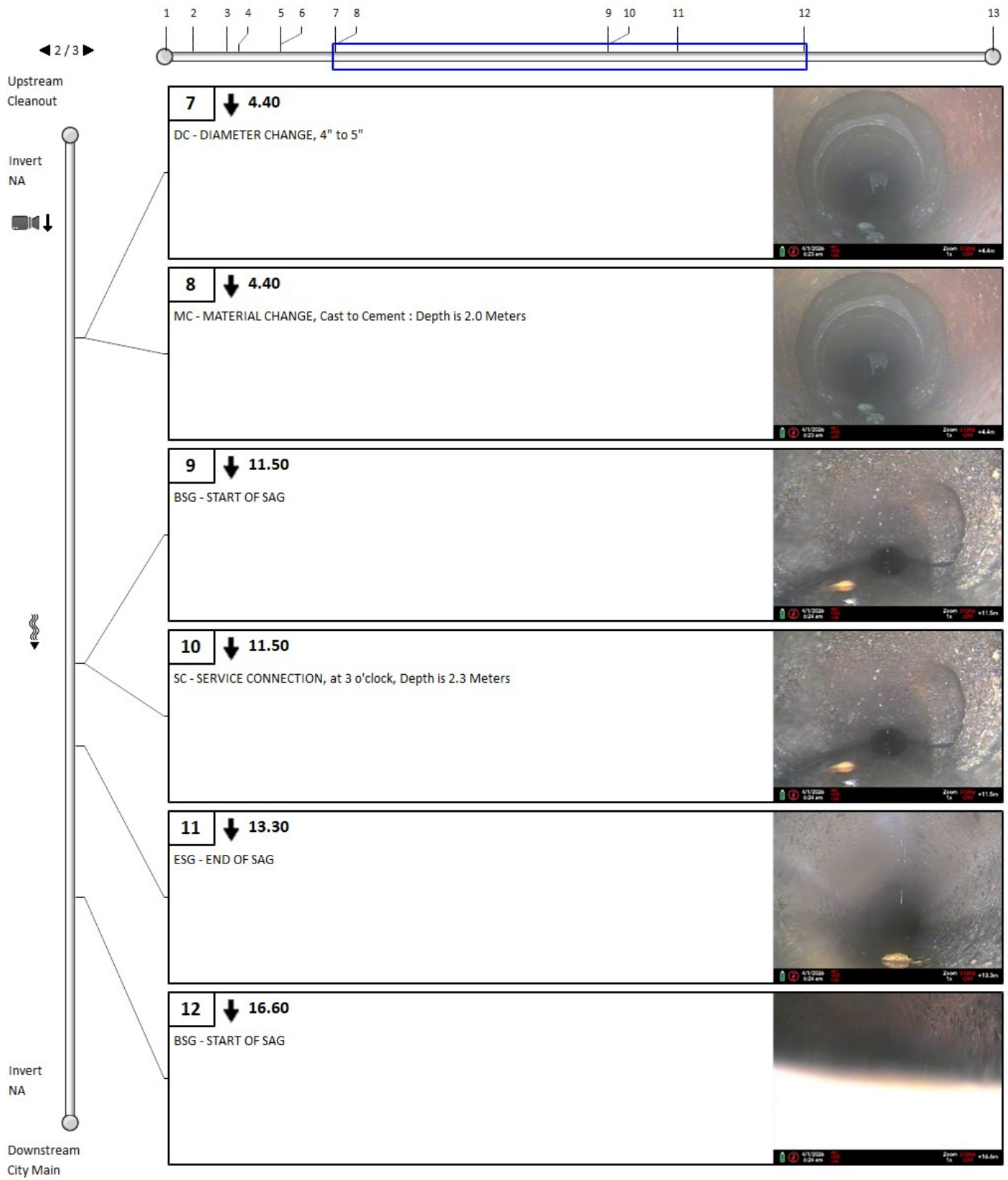
### Other information

<b>Date:</b> April 1 2026	<b>Information 7:</b>
<b>Work Order#:</b> 152188	<b>Information 8:</b>
<b>Start of Location:</b> Cleanout	<b>Information 9:</b>
<b>End of Location:</b> City Main	<b>Information 10:</b>
<b>Location:</b> Basement - Storage Room	<b>P15 (MAMR):</b> 0
<b>Information 6:</b>	<b>P16 (MAMR):</b> 0

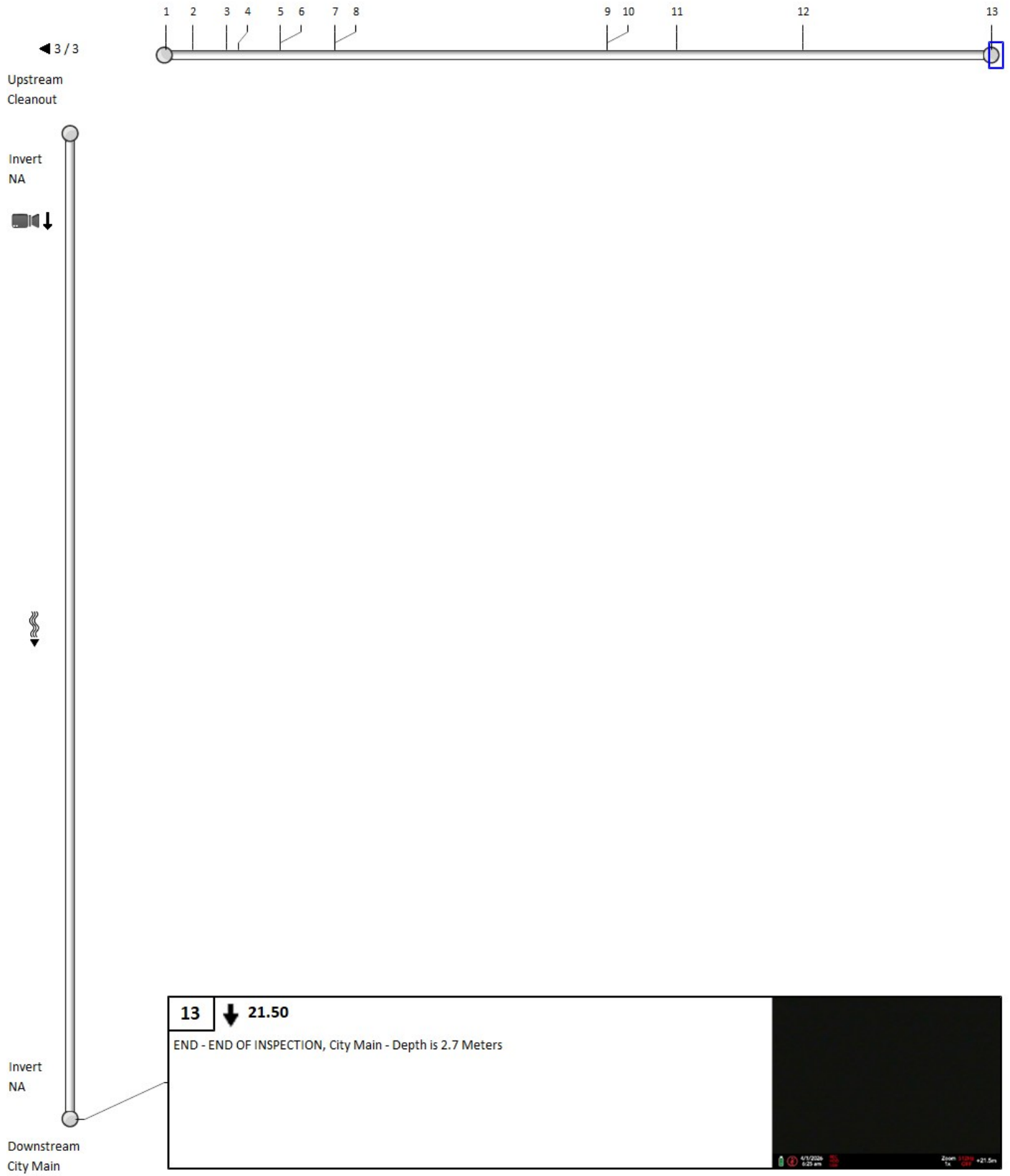
## 2. Pipe summary and condition details



## 2. Pipe summary and condition details



## 2. Pipe summary and condition details



## 2. Pipe summary and condition details

### Pipe identification

<b>Pipe:</b> Manhole to 21.0 Meters (Building)	<b>Direction of inspection:</b> 21.0 Meters (Building) --> Manhole
<b>Direction of flow:</b> Manhole --> 21.0 Meters (Building)	<b>Direction:</b> Against flow

### Pipe location

<b>Road:</b> 960 Silver St	<u>UPSTREAM</u>	<u>DOWNSTREAM</u>
<b>Drainage Area:</b>	<b>Easting (X):</b>	<b>Easting (X):</b>
<b>City:</b> Ottawa	<b>Northing (Y):</b>	<b>Northing (Y):</b>
<b>Location:</b>	<b>Elevation (Z):</b>	<b>Elevation (Z):</b>
<b>Owner:</b> City of Ottawa	<b>Vertical Datum:</b>	

### Pipe characteristics

<b>Category:</b> Storm	<b>Size:</b> 5
<b>Material:</b> Polyvinyl chloride	<b>Width:</b>
<b>Lining:</b>	<b>Total length:</b>
<b>Type:</b> Lateral	<b>Pipe unit length:</b>
<b>Invert (upstream):</b>	<b>Year laid:</b>
<b>Depth (upstream):</b>	<b>Invert (downstream):</b>
<b>Cover level (upstream):</b>	<b>Depth (downstream):</b>
	<b>Cover level (downstream):</b>

### Additional details

<b>Date:</b> 01/04/2026, 12:00 PM	<b>Survey Abandoned:</b>
<b>Project Number:</b> CCTV Inspection	<b>Inspected length:</b> 21
<b>Contractor project #:</b>	<b>Pre-cleaning:</b> <input type="checkbox"/>
<b>Client:</b> City of Ottawa	<b>Blocked flow:</b> <input type="checkbox"/>
<b>Purpose:</b>	<b>Regular CCTV:</b> <input type="checkbox"/>
<b>Operator:</b> Don	<b>Reinspect with ZOOM:</b> <input type="checkbox"/>
<b>Analyst:</b>	<b>Medium #:</b>
	<b>Start position:</b>
	<b>End position:</b>

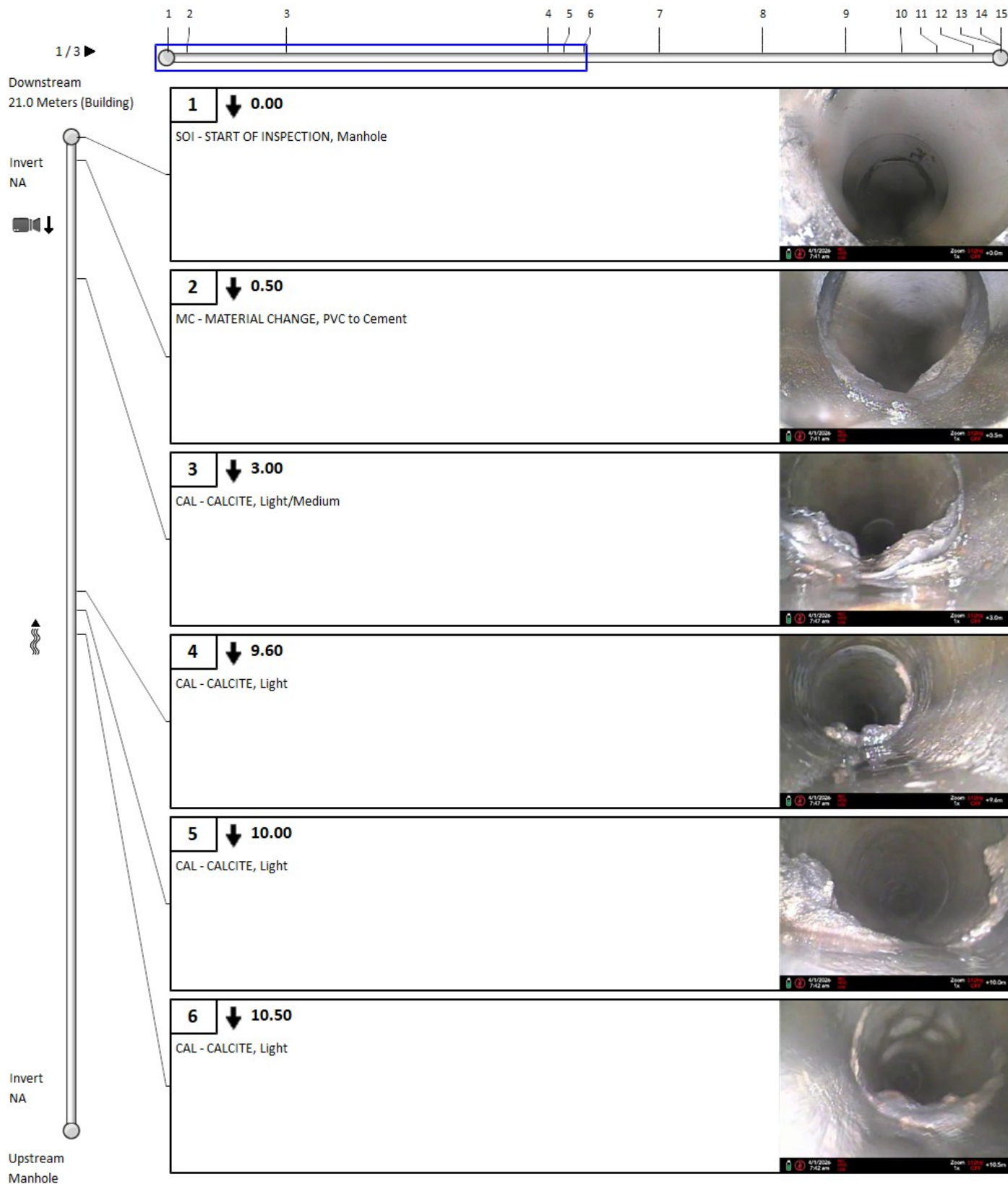
### Comments

CCTV Inspection From Manhole to 21.0 Meters (Building) Light to Medium Calcite on Almost Every Joint
---

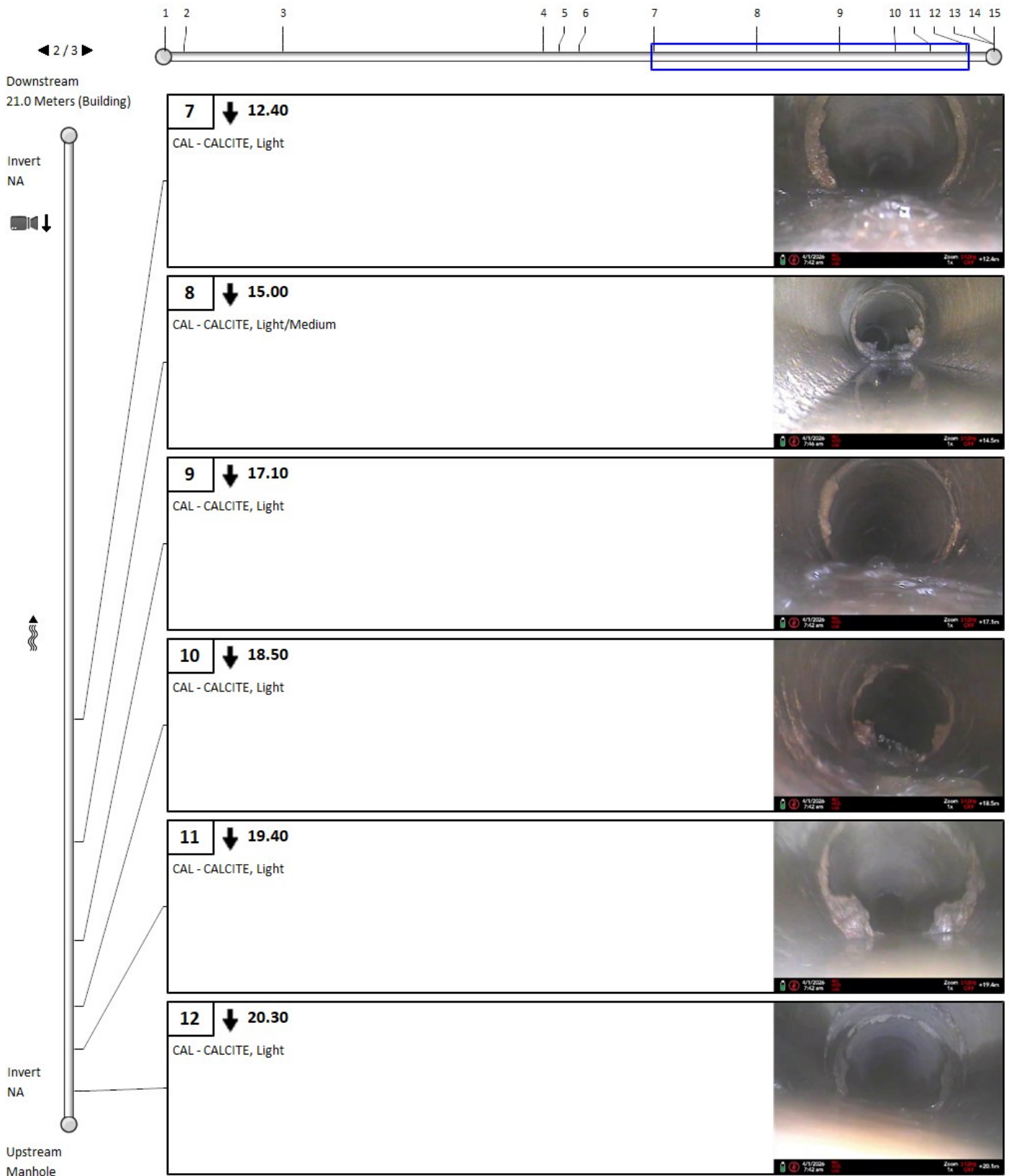
### Other information

<b>Date:</b> April 1 2026	<b>Information 7:</b>
<b>Work Order#:</b> 152188	<b>Information 8:</b>
<b>Start of Location:</b> Manhole	<b>Information 9:</b>
<b>End of Location:</b> 21.0 Meters (Building)	<b>Information 10:</b>
<b>Location:</b> Road	<b>P15 (MAMR):</b> 0
<b>Information 6:</b>	<b>P16 (MAMR):</b> 0

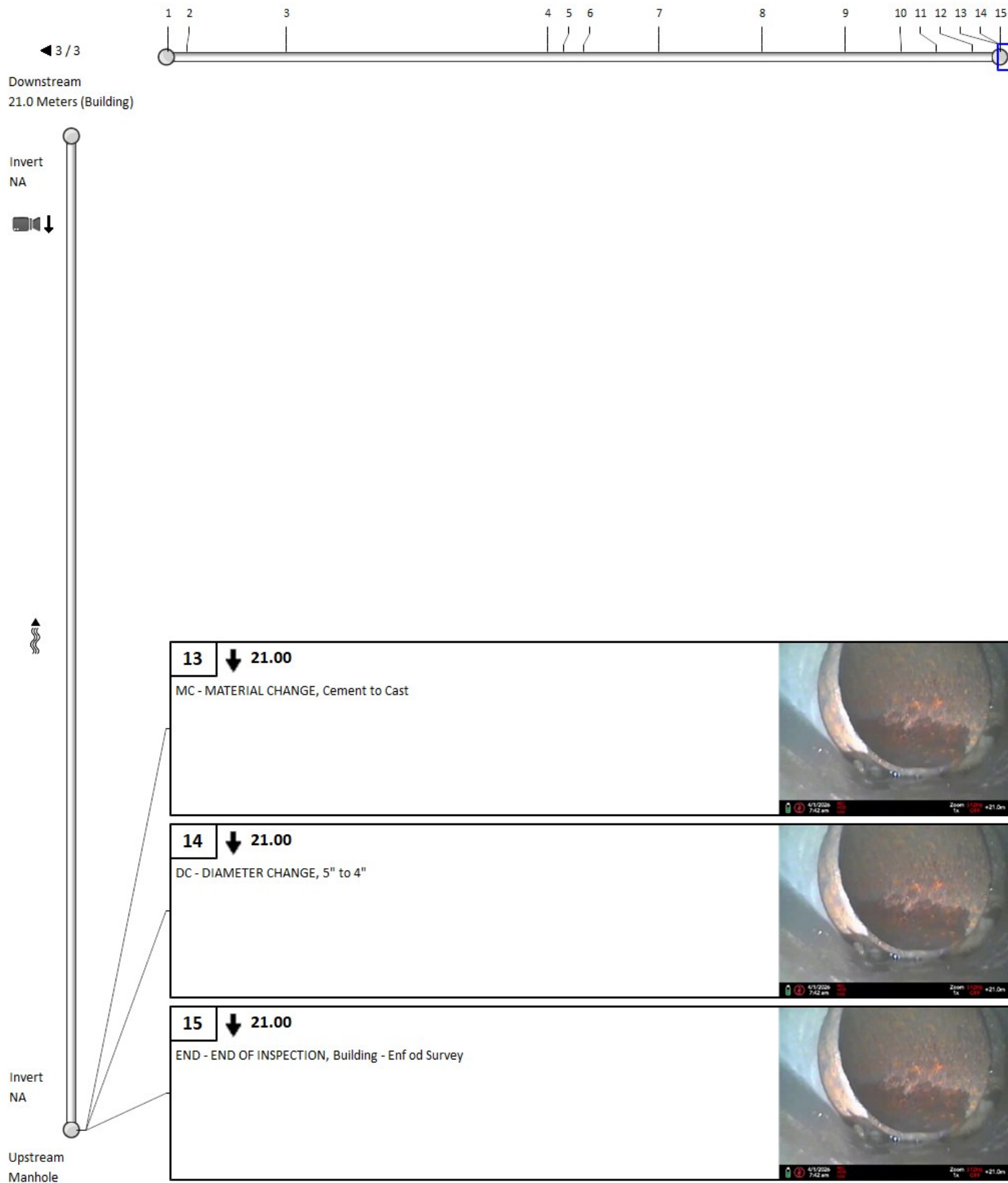
## 2. Pipe summary and condition details



## 2. Pipe summary and condition details



## 2. Pipe summary and condition details



## 2. Pipe summary and condition details

### Pipe identification

<b>Pipe:</b> Stack Cleanout to Foundation	<b>Direction of inspection:</b> Stack Cleanout --> Foundation
<b>Direction of flow:</b> Stack Cleanout --> Foundation	<b>Direction:</b> Direction of flow

### Pipe location

<b>Road:</b> 960 Silver St	<u>UPSTREAM</u>	<u>DOWNSTREAM</u>
<b>Drainage Area:</b>	<b>Easting (X):</b>	<b>Easting (X):</b>
<b>City:</b> Ottawa	<b>Northing (Y):</b>	<b>Northing (Y):</b>
<b>Location:</b>	<b>Elevation (Z):</b>	<b>Elevation (Z):</b>
<b>Owner:</b> City of Ottawa	<b>Vertical Datum:</b>	

### Pipe characteristics

<b>Category:</b> Storm	<b>Size:</b> 3
<b>Material:</b> Cast iron	<b>Width:</b>
<b>Lining:</b>	<b>Total length:</b>
<b>Type:</b> Lateral	<b>Pipe unit length:</b>
<b>Invert (upstream):</b>	<b>Year laid:</b>
<b>Depth (upstream):</b>	<b>Invert (downstream):</b>
<b>Cover level (upstream):</b>	<b>Depth (downstream):</b>
	<b>Cover level (downstream):</b>

### Additional details

<b>Date:</b> 01/04/2026, 12:00 PM	<b>Survey Abandoned:</b>
<b>Project Number:</b> CCTV Inspection	<b>Inspected length:</b> 25
<b>Contractor project #:</b>	<b>Pre-cleaning:</b> <input type="checkbox"/>
<b>Client:</b> City of Ottawa	<b>Blocked flow:</b> <input type="checkbox"/>
<b>Purpose:</b>	<b>Regular CCTV:</b> <input type="checkbox"/>
<b>Operator:</b> Don	<b>Reinspect with ZOOM:</b> <input type="checkbox"/>
<b>Analyst:</b>	<b>Medium #:</b>
	<b>Start position:</b>
	<b>End position:</b>

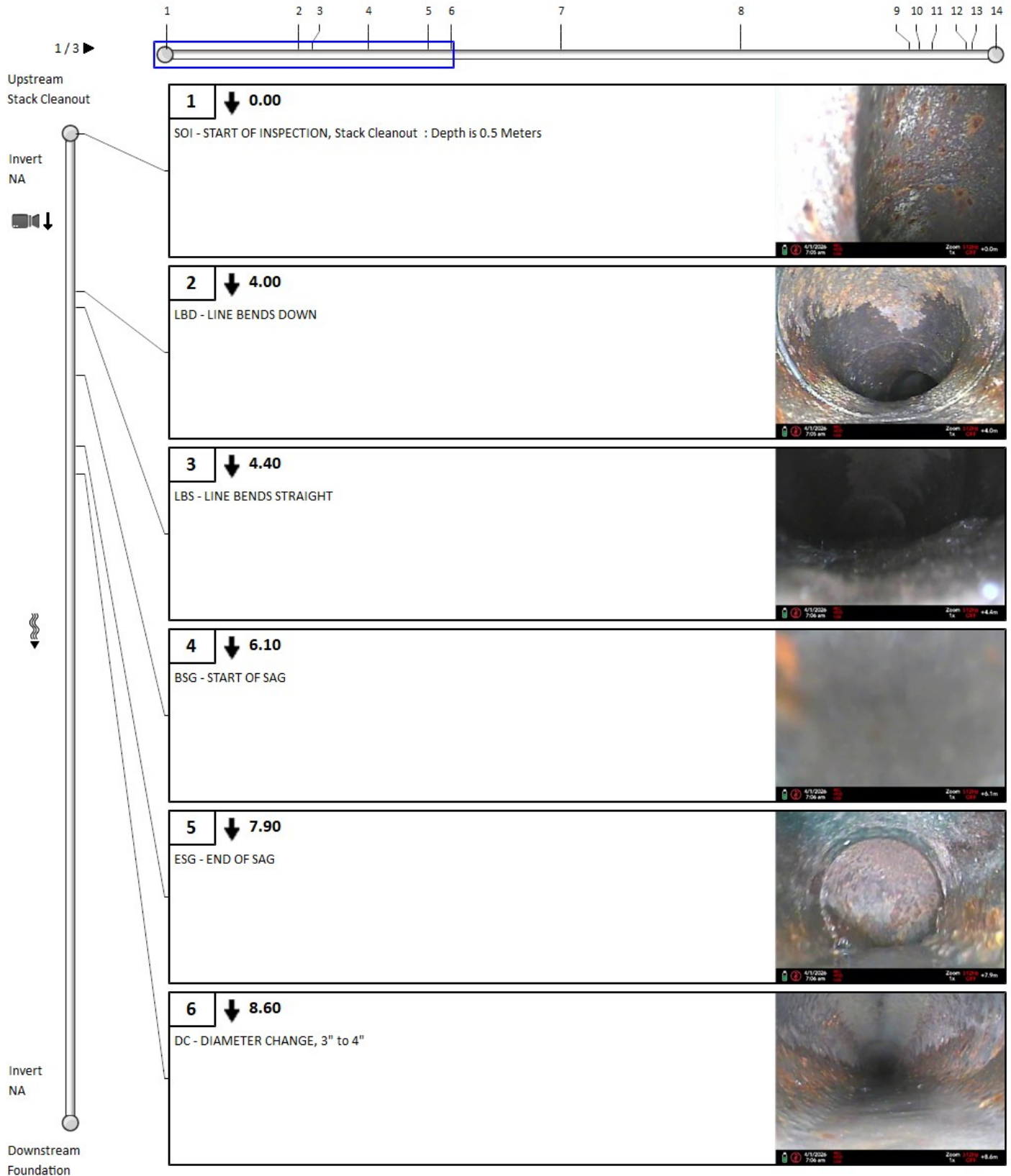
### Comments

CCTV Inspection of The Storm Lateral From Stack Cleanout to Foundation
--

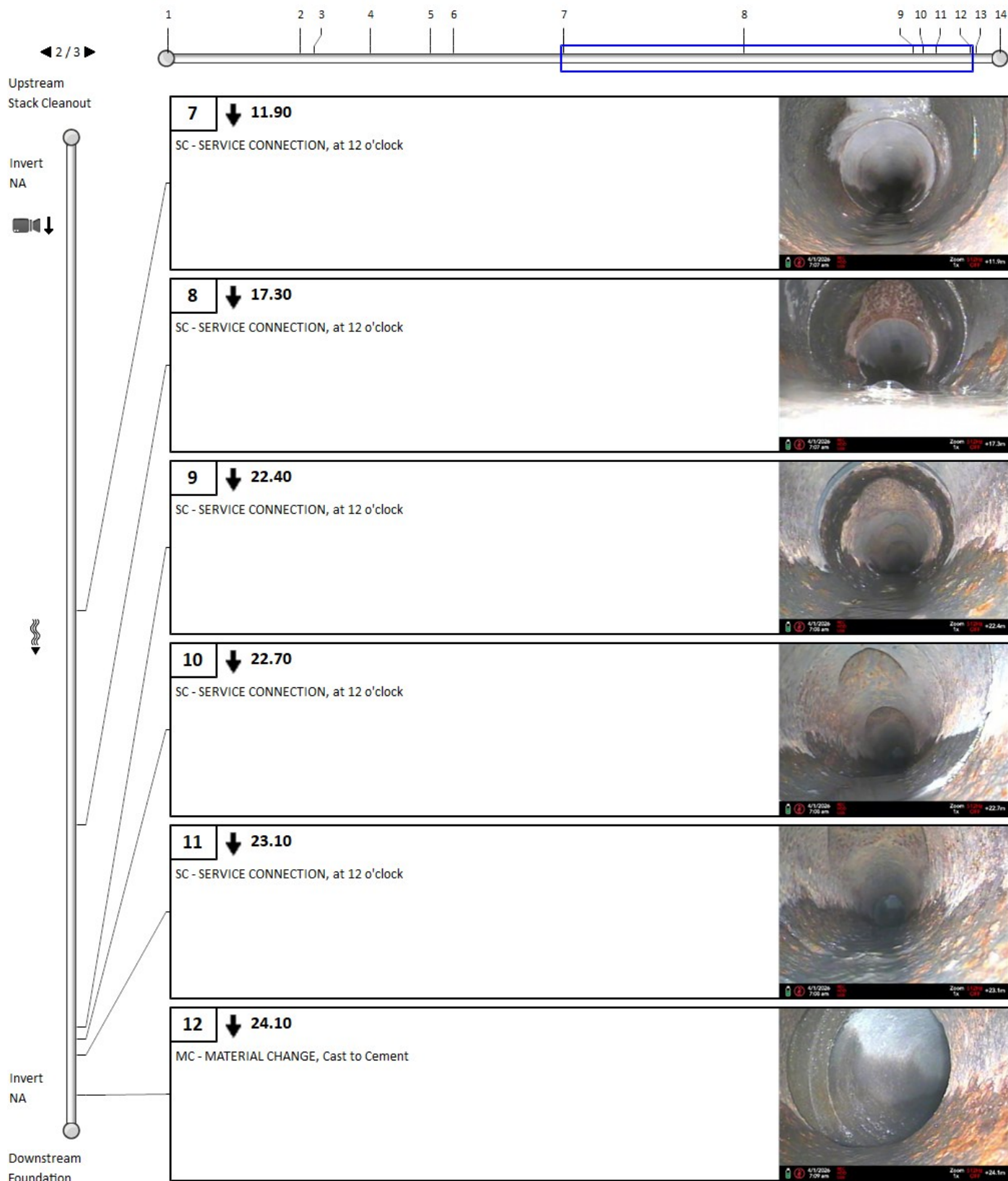
### Other information

<b>Date:</b> April 1 2026	<b>Information 7:</b>
<b>Work Order#:</b> 152188	<b>Information 8:</b>
<b>Start of Location:</b> Stack Cleanout	<b>Information 9:</b>
<b>End of Location:</b> Foundation	<b>Information 10:</b>
<b>Location:</b> Main Floor - Kitchen	<b>P15 (MAMR):</b> 0
<b>Information 6:</b>	<b>P16 (MAMR):</b> 0

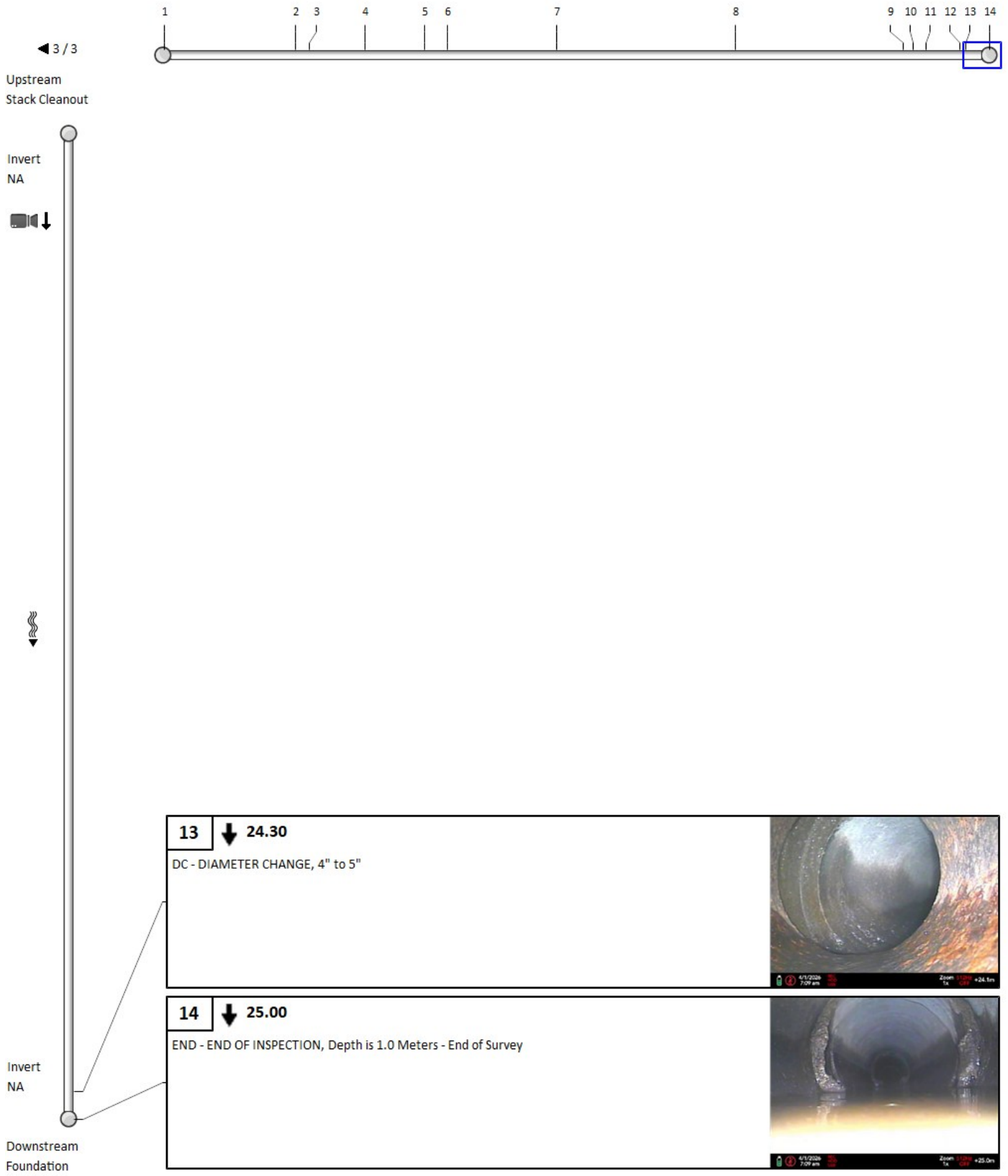
## 2. Pipe summary and condition details



## 2. Pipe summary and condition details



## 2. Pipe summary and condition details



<b>13</b>	↓ <b>24.30</b>	DC - DIAMETER CHANGE, 4" to 5"	
<b>14</b>	↓ <b>25.00</b>	END - END OF INSPECTION, Depth is 1.0 Meters - End of Survey	