

ALEXANDER COMMUNITY CENTRE EXPANSION



202-950 GLADSTONE AVENUE
OTTAWA, ON K1Y 3E6
T 613 233 8579
F 613 233 4051
W LashleyLA.com
E Mail@LashleyLA.com

960 SILVER STREE, OTTAWA
ON K1Z 6H5

ISSUED FOR SITE PLAN SUBMISSION

2026-04-14

DRAWING INDEX

COVER	L0
TREE REMOVAL PLAN	L1
TREE INVENTORY	L2
TREE PROTECTION PLAN	L3
LANDSCAPE PLAN	L4
LANDSCAPE PLAN	L5
DETAILS	L6
DETAILS	L7
DETAILS	L8

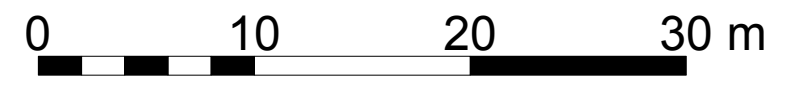


GENERAL NOTES

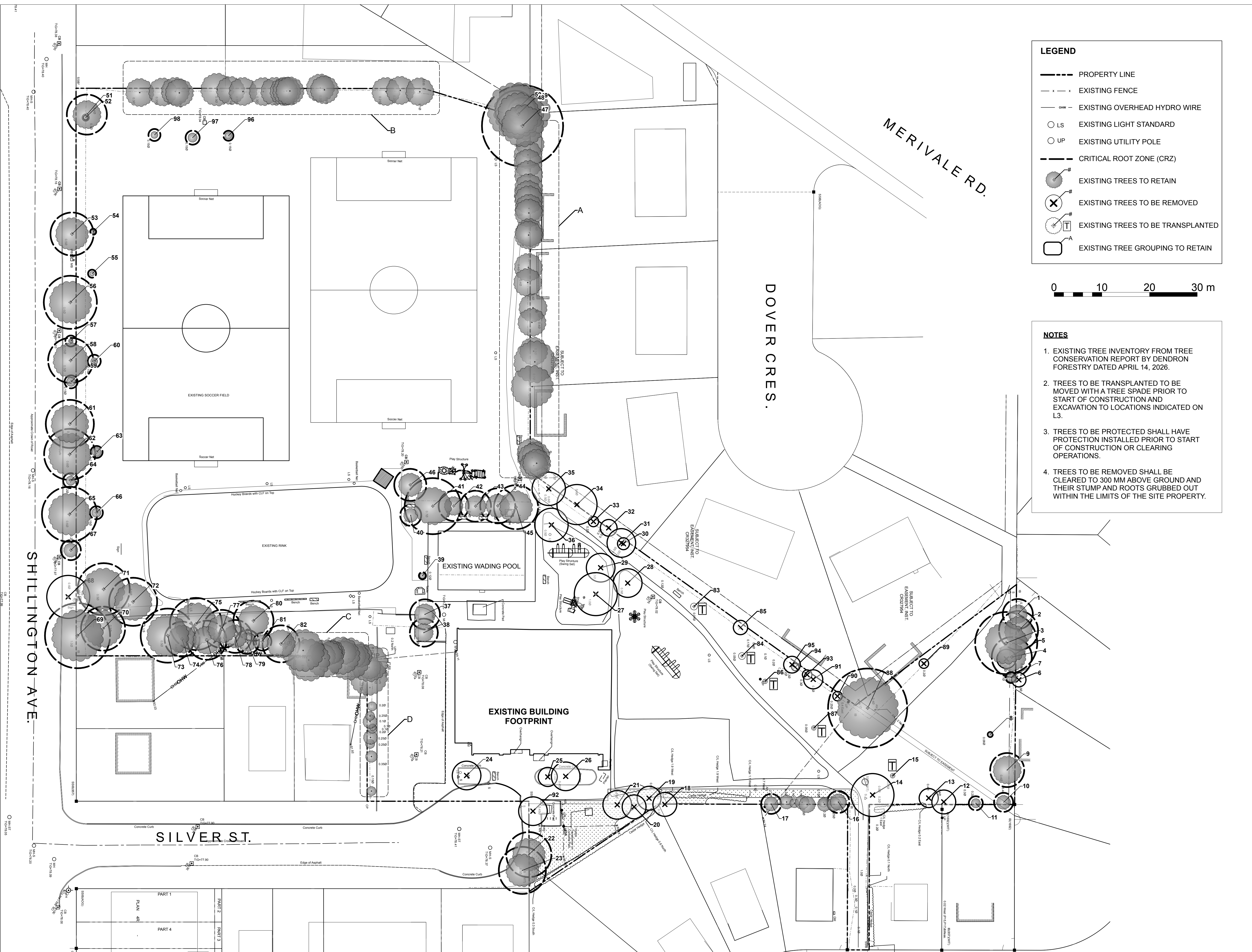
1. ALL GENERAL SITE INFORMATION AND CONDITIONS COMPILED FROM ARCHITECTS, ENGINEERS, FORESTRY CONSULTANT PLANS, AND SURVEYS.
2. DO NOT SCALE THIS DRAWING.
3. REPORT ANY DISCREPANCIES PRIOR TO COMMENCING WORK. NO RESPONSIBILITY IS BORN BY THE LANDSCAPE ARCHITECT FOR UNKNOWN SUBSURFACE CONDITIONS.
4. REINSTATE ALL AREAS AND ITEMS DAMAGED AS A RESULT OF CONSTRUCTION ACTIVITIES TO THE SATISFACTION OF THE LANDSCAPE ARCHITECT.
5. DRAWING MAY NOT BE USED FOR CONSTRUCTION UNTIL SIGNED BY LANDSCAPE ARCHITECT AS ISSUED FOR CONSTRUCTION.
6. THE ACCURACY OF THE POSITION OF UTILITIES IS NOT GUARANTEED.
7. INDIVIDUAL UTILITY CO. MUST BE CONTACTED FOR CONFIRMATION OF UTILITY EXISTENCE AND LOCATION PRIOR TO DIGGING.
8. THIS DRAWING IS AN INSTRUMENT OF SERVICE AND REQUIRES THE PERMISSION OF THE LANDSCAPE ARCHITECT FOR USE. COPYRIGHT IS RESERVED BY THE LANDSCAPE ARCHITECT, DAVID M. LASHLEY.

LEGEND

- PROPERTY LINE
- x - x EXISTING FENCE
- OHW - EXISTING OVERHEAD HYDRO WIRE
- LS EXISTING LIGHT STANDARD
- UP EXISTING UTILITY POLE
- CRITICAL ROOT ZONE (CRZ)
- # EXISTING TREES TO RETAIN
- ⊗ # EXISTING TREES TO BE REMOVED
- ⊕ # EXISTING TREES TO BE TRANSPLANTED
- # EXISTING TREE GROUPING TO RETAIN



- NOTES**
1. EXISTING TREE INVENTORY FROM TREE CONSERVATION REPORT BY DENDRON FORESTRY DATED APRIL 14, 2026.
 2. TREES TO BE TRANSPLANTED TO BE MOVED WITH A TREE SPADE PRIOR TO START OF CONSTRUCTION AND EXCAVATION TO LOCATIONS INDICATED ON L3.
 3. TREES TO BE PROTECTED SHALL HAVE PROTECTION INSTALLED PRIOR TO START OF CONSTRUCTION OR CLEARING OPERATIONS.
 4. TREES TO BE REMOVED SHALL BE CLEARED TO 300 MM ABOVE GROUND AND THEIR STUMP AND ROOTS GRUBBED OUT WITHIN THE LIMITS OF THE SITE PROPERTY.



6			
5			
4			
3			

2	SITE PLAN SUBMISSION	26/04/14	DL
1	ISSUED FOR 3% SUBMISSION	26/03/25	KJ

DESIGNED BY / CONCEVU PAR	DL/KJ	CHECKED BY / VERIFIE PAR	DL
---------------------------	-------	--------------------------	----

DRAWN BY / DESINE PAR	KJ	SCALE / ECHELLE	AS NOTED
-----------------------	----	-----------------	----------

DETAIL NUMBER
1
DRAWING TITLE
SCALE:
SHEET NUMBER

THIS DRAWING IS THE PROPERTY OF THE CITY OF OTTAWA AND ALL COPYRIGHT IS RESERVED. DIMENSIONS ON DRAWING ARE FOR ESTIMATING PURPOSES ONLY. IT IS THE RESPONSIBILITY OF EACH CONTRACTOR AND SUB-CONTRACTOR OR CONSULTANT TO CHECK AND VERIFY ALL DIMENSIONS AND CONDITIONS ON SITE. NOTIFY OWNER OF ANY ERRORS OR OMISSIONS PRIOR TO COMMENCING THE WORK. DO NOT SCALE THE DRAWINGS.

CE DESSIN CONSTITUE LA PROPRIÉTÉ DE LA VILLE D'OTTAWA ET TOUT DROIT D'AUTEUR EST RÉSERVÉ. LES DIMENSIONS UTILISÉES LE SONT À DES FINS D'ESTIMATION SEULEMENT. IL INCOMBE À CHAQUE ENTREPRENEUR, SOUS-CONTRACTANT OU CONSULTANT DE VÉRIFIER TOUTES LES DIMENSIONS ET LES CONDITIONS SUR LE CHANTIER. VEUILLEZ INFORMER LE PROPRIÉTAIRE DE TOUTE ERREUR OU OMISSION AVANT D'ENTAMER LES TRAVAUX. NE DRESSEZ PAS LES PLANS À L'ÉCHELLE.

ARCHITECT / ARCHITECTE

CONSULTANT / EXPERT-CONSEIL

CONSULTANT / EXPERT-CONSEIL

CONSULTANT / EXPERT-CONSEIL

PROJECT / LOCATION / PROJET / ENDROIT
ALEXANDER COMMUNITY CENTRE EXPANSION

950 Silver Street
OTTAWA, ONTARIO

DRAWING / DESSIN
TREE REMOVAL PLAN

GENERAL NOTES

1. ALL GENERAL SITE INFORMATION AND CONDITIONS COMPILED FROM ARCHITECTS, ENGINEERS, FORESTRY CONSULTANT PLANS, AND SURVEYS.
2. DO NOT SCALE THIS DRAWING.
3. REPORT ANY DISCREPANCIES PRIOR TO COMMENCING WORK. NO RESPONSIBILITY IS BORN BY THE LANDSCAPE ARCHITECT FOR UNKNOWN SURFACE CONDITIONS.
4. REINSTATE ALL AREAS AND ITEMS DAMAGED AS A RESULT OF CONSTRUCTION ACTIVITIES TO THE SATISFACTION OF THE LANDSCAPE ARCHITECT.
5. DRAWING MAY NOT BE USED FOR CONSTRUCTION UNTIL SIGNED BY LANDSCAPE ARCHITECT AS ISSUED FOR CONSTRUCTION.
6. THE ACCURACY OF THE POSITION OF UTILITIES IS NOT GUARANTEED.
7. INDIVIDUAL UTILITY CO. MUST BE CONTACTED FOR CONFIRMATION OF UTILITY EXISTENCE AND LOCATION PRIOR TO DIGGING.
8. THIS DRAWING IS AN INSTRUMENT OF SERVICE AND REQUIRES THE PERMISSION OF THE LANDSCAPE ARCHITECT FOR USE. COPYRIGHT IS RESERVED BY THE LANDSCAPE ARCHITECT, DAVID M. LASHLEY.

6			
5			
4			
3			

2	SITE PLAN SUBMISSION	26/04/14	DL
1	ISSUED FOR 30% SUBMISSION	26/03/25	KJ

DESIGNED BY / CONCEU PAR	DL/KJ	CHECKED BY / VÉRIFIÉ PAR	DL
--------------------------	-------	--------------------------	----

DRAWN BY / DÉSSINÉ PAR	KJ	SCALE / ÉCHELLE	AS NOTED
------------------------	----	-----------------	----------

DETAIL NUMBER
A1.1 DRAWING TITLE
SCALE:
SHEET NUMBER

THIS DRAWING IS THE PROPERTY OF THE CITY OF OTTAWA AND ALL COPYRIGHT IS RESERVED. DIMENSIONS ON DRAWING ARE FOR ESTIMATING PURPOSES ONLY. IT IS THE RESPONSIBILITY OF EACH CONTRACTOR AND SUB-CONTRACTOR OR CONSULTANT TO CHECK AND VERIFY ALL DIMENSIONS AND CONDITIONS ON SITE. NOTIFY OWNER OF ANY ERRORS OR OMISSIONS PRIOR TO COMMENCING THE WORK. DO NOT SCALE THE DRAWINGS.

CE DESSIN CONSTITUE LA PROPRIÉTÉ DE LA VILLE D'OTTAWA ET TOUT DROIT D'AUTEUR EST RÉSERVÉ. LES DIMENSIONS UTILISÉES LE SONT À DES FINS D'ESTIMATION SEULEMENT. IL INCOMBE À CHAQUE ENTREPRENEUR, SOUS-CONTRACTANT OU CONSULTANT DE VÉRIFIER TOUTES LES DIMENSIONS ET LES CONDITIONS SUR LE CHANTIER. VEUILLEZ INFORMER LE PROPRIÉTAIRE DE TOUTE ERREUR OU OMISSION AVANT D'ENTAMER LES TRAVAUX. NE DRESSEZ PAS LES PLANS À L'ÉCHELLE.

ARCHITECT / ARCHITECTE
CONSULTANT / EXPERT-CONSEIL

PROJECT / LOCATION / PROJET / ENDROIT
ALEXANDER COMMUNITY CENTRE EXPANSION

950 Silver Street
OTTAWA, ONTARIO

DRAWING / DESSIN
TREE INVENTORY

BUSINESS ENTITY / NUMÉRO DE L'ENTITÉ
BUILDING NUMBER / NUMÉRO DU BÂTIMENT

SHEET NO. / FEUILLE NO.

CITY PROJECT NO. / NUMÉRO DE PROJET
CONS. PROJECT NO. / NUMÉRO DE PROJET

CF001822 25907-1

L2

TREE INVENTORY

Tree#	Species	Diameter at breast height (cm)	Critical Root Zone Diameter (m)	Ownership#2,3	Condition	Action	Recommendations
1	Norway maple (Acer platanoides)	30	6.3	Adjacent property	Fair/poor; conflict with fence, lean, suppressed, possible canker	Retain	Prune overhanging branches
2	Norway maple (Acer platanoides)	39	8.2	Adjacent property	Good/fair	Retain	Prune overhanging branches
3	Siberian elm (Ulmus pumila)	62	13.0	City	Fair/good; wound at 6 m below fork	Retain	Prune overhanging branches
4	Siberian elm (Ulmus pumila)	40	8.4	City	Fair; heavy lean, shaded by tree #3	Retain	Prune overhanging branches
5	Siberian elm (Ulmus pumila)	22	4.6	City	Fair/poor; topped, suppressed	Remove due to health	
6	Manitoba maple (Acer negundo)	29	6.1	Adjacent property	Fair/poor heavy lean, large wound at 1.3 m above grade, conflict with fence	Remove or prune	Removal is best option to reduce risk of failure, coordinate with adjacent property owner
7	Prospector elm (Ulmus davidiana var. japonica 'Prospector')	11	2.3	City	Good	Retain	Install protective fencing with radius of 1.5 m
8	Honey locusts (Gleditsia triacanthos)	5	1.1	City	Good/fair; wound on trunk	Retain	Install protective fencing with radius of 1.5 m
9	American elm (Ulmus americana)	34	7.1	City	Good/fair; lost main leader but adapting	Retain	Prune overhanging branches, re-assess for Dutch elm disease over the summer
10	Manitoba maple (Acer negundo)	16,10	4.0	City	Fair/poor; conflict with hydro lines	Retain	
11	Manitoba maple (Acer negundo)	14	2.9	Jointly owned with City	Poor; topped for hydro clearance	Retain	
12	Manitoba maple (Acer negundo)	34	7.1	Jointly owned with City	Fair; lean over new pathway	Remove	Lean will cause future issues with risk, consider removing and replacing with new tree
13	Manitoba maple (Acer negundo)	24,15	5.9	City	Fair/poor; large wound on largest stem, sprout from old stump	Remove	Lean will cause future issues with risk, consider removing and replacing with new tree
14	Manitoba maple (Acer negundo)	64	13.4	City	Fair; strong lean over pathway with fungus present on old pruning wound	Retain	Recommend monitoring
15	Honey locusts (Gleditsia triacanthos)	6	1.3	City	Good	Relocate	To be transplanted in the fall
16	Manitoba maple (Acer negundo)	22	4.6	City	Poor; topped for hydro clearance	Retain	
17	Norway maple (Acer platanoides)	20	4.2	Jointly owned with City	Poor; topped for hydro clearance	Retain	
18	American elm (Ulmus americana)	35	7.4	Jointly owned with City	Good	Remove	Conflict with proposed services; area of high construction activity
19	Austrian pine (Pinus nigra)	43	9.0	City	Good	Remove	Conflict with proposed services
20	Austrian pine (Pinus nigra)	33	6.9	City	Good/fair; forked and twisted stems	Remove	Conflict with proposed services; area of high construction activity
21	Austrian pine (Pinus nigra)	52	10.9	City	Good/fair; forked	Remove	Conflict with proposed services
22	Honey locusts (Gleditsia triacanthos)	45	9.5	City	Good/fair	Retain	Protect with fencing
23	Honey locusts (Gleditsia triacanthos)	47	9.9	City	Good/fair; mechanical damage (vandalism) on trunk	Retain	Protect with fencing
24	Honey locusts (Gleditsia triacanthos)	48	10.1	City	Fair; dieback, significant recent pruning	Remove	Conflict with construction
25	Honey locusts (Gleditsia triacanthos)	30	6.3	City	Fair; thin crown	Remove	Conflict with services
26	Honey locusts (Gleditsia triacanthos)	43	9.0	City	Good/fair	Remove	Conflict with services

LEGEND

TREES TO BE REMOVED

TREES TO BE TRANSPLANTED

- NOTES**
1. EXISTING TREE INVENTORY FROM TREE CONSERVATION REPORT BY DENDRON FORESTRY DATED APRIL 14, 2026.
 2. TREES TO BE TRANSPLANTED TO BE MOVED WITH A TREE SPADE PRIOR TO START OF CONSTRUCTION AND EXCAVATION TO LOCATIONS INDICATED ON L3.
 3. TREES TO BE PROTECTED SHALL HAVE PROTECTION INSTALLED PRIOR TO START OF CONSTRUCTION OR CLEARING OPERATIONS.

27	Littleleaf linden (Tilia cordata)	46,41	13.0	City	Good/fair; included bark, consider structural support	Remove	Within proposed footprint
28	Red oak (Quercus rubra)	39	8.2	City	Fair; asymmetric crown/shading, possible root girdling	Remove	Within proposed footprint
29	Honey locusts (Gleditsia triacanthos)	42	8.8	City	Good/fair	Remove	Within proposed footprint
30	Manitoba maple (Acer negundo)	21	4.4	Jointly owned with City	Poor; topped	Remove	Remove due to installation of new swale and grading
31	White birch (Betula papyrifera)	14,47	10.3	City	Poor; dying from top	Remove	Remove due to installation of new swale and grading
32	Manitoba maple (Acer negundo)	29	6.1	City	Fair/poor; pruning for hydro clearance, heavy lean	Remove	Remove due to installation of new swale and grading
33	Norway maple (Acer platanoides)	18	3.8	City	Fair; pruning for hydro clearance	Remove	Remove due to installation of new swale and grading
34	Manitoba maple (Acer negundo)	70	14.7	Jointly owned with adjacent property	Fair/poor; Pruning for hydro clearance	Remove	Remove due to installation of new swale and grading
35	Manitoba maple (Acer negundo)	45	9.5	City	Fair; pruning for hydro clearance	Remove	Remove due to installation of new swale and grading
36	Austrian pine (Pinus nigra)	52	10.9	City	Good/fair	Remove	Within area of excavation
37	Honey locusts (Gleditsia triacanthos)	30	6.3	City	Good	Retain	Protect with fencing
38	Honey locusts (Gleditsia triacanthos)	28	5.9	City	Good	Retain	Protect with fencing
39	Blue beech (Carpinus caroliniana)	5,5	1.5	City	Fair	Retain	Protect with fencing
40	Sugar maple (Acer saccharum)	21	4.4	City	Fair; suppressed, root damage and girdling roots	Retain	Protect with fencing
41	Honey locusts (Gleditsia triacanthos)	56	11.8	City	Good; dominant, good health	Retain	Protect with fencing
42	Honey locusts (Gleditsia triacanthos)	30	6.3	City	Good/fair	Retain	Protect with fencing
43	Honey locusts (Gleditsia triacanthos)	31	6.5	City	Good/fair	Retain	Protect with fencing
44	Honey locusts (Gleditsia triacanthos)	35	7.4	City	Good/fair	Retain	Protect with fencing
45	Honey locusts (Gleditsia triacanthos)	44	9.2	City	Good	Retain	Protect with fencing
46	Sugar maple (Acer saccharum)	32	6.7	City	Fair; suppressed by #41, girdling roots	Retain	Protect with fencing
47	Manitoba maple (Acer negundo)	57,58	17.0	City	Fair/poor; heavy lean, decay throughout	Retain	
48	Crab apple (Malus spp)	20	4.2	Adjacent property	Fair	Retain	
49	Crab apple (Malus spp)	28	5.9	Adjacent property	Fair	Retain	
50	Crab apple (Malus spp)	40	8.4	Adjacent property	Fair	Retain	
51	Manitoba maple (Acer negundo)	21,15,23,20	8.4	City	Fair/poor; growing in between 2 fences	Retain	
52	Basswood (Tilia americana)	6	1.3	City	Good/fair; suppressed by #51	Retain	
53	Green ash (Acer pennsylvanica)	43	9.0	City	Fair; on City ash injection program	Retain	
54	Ginkgo (Ginkgo biloba)	6	1.3	City	Good	Retain	
55	Ginkgo (Ginkgo biloba)	8	1.7	City	Good	Retain	
56	Norway maple (Acer platanoides)	53	11.1	City	Good	Retain	
57	Hackberry (Celtis occidentalis)	11	2.3	City	Good	Retain	
58	Green ash (Acer pennsylvanica)	45	9.5	City	Fair; on City ash injection program	Retain	
59	Hackberry (Celtis occidentalis)	13	2.7	City	Good	Retain	
60	Red maple (Acer rubrum)	13	2.7	City	Good; minor damage by mowing equipment	Retain	
61	Green ash (Acer pennsylvanica)	48	10.1	City	Fair	Retain	
62	Green ash (Acer pennsylvanica)	51	10.7	City	Fair	Retain	
63	Red maple (Acer rubrum)	12	2.5	City	Good	Retain	
64	Prospector elm (Ulmus spp)	15	3.2	City	Good	Retain	
65	Green ash (Acer pennsylvanica)	55	11.6	City	Fair	Retain	

66	Red maple (Acer rubrum)	13	2.7	City	Good	Retain	
67	Prospector elm (Ulmus spp)	20	4.2	City	Good	Retain	
68	Sugar maple (Acer saccharum)	56	11.8	City	Poor; decay on main stem with branch leaning over road	Remove	Removal based on health and potential for failure over road
69	Red oak (Quercus rubra)	65	13.7	City	Good	Retain	
70	Red oak (Quercus rubra)	44	9.2	City	Fair; some dieback (fungus present in crown)	Retain	
71	Platanus occidentalis (American sycamore)	52	10.9	City	Fair; root/trunk damage	Retain	
72	Norway maple (Acer platanoides)	48	10.1	City	Fair; trunk damage	Retain	
73	Austrian pine (Pinus nigra)	54	11.3	City	Fair; fork	Retain	
74	Austrian pine (Pinus nigra)	35	7.4	City	Good	Retain	
75	Austrian pine (Pinus nigra)	52	10.9	City	Good	Retain	
76	Austrian pine (Pinus nigra)	39	8.2	City	Good	Retain	
77	Austrian pine (Pinus nigra)	41	8.6	City	Fair; slight lean, bark beetle holes	Retain	
78	Austrian pine (Pinus nigra)	33	6.9	City	Good/fair; insect holes	Retain	
79	Norway maple (Acer platanoides)	24	5.0	City	Fair; lean	Retain	
80	Red maple (Acer rubrum)	40	8.4	City	Fair; girdling roots	Retain	
81	Norway maple (Acer platanoides)	18	3.8	City	Good	Retain	
82	Norway maple (Acer platanoides)	24,16,13	7.8	City	Fair	Retain	
83	Blue beech (Carpinus caroliniana)	6	1.3	City	Fair	Relocate	Consider transplanting in the fall
84	Blue beech (Carpinus caroliniana)	4	0.8	City	Good	Relocate	Consider transplanting in the fall
85	Red maple (Acer rubrum)	22	4.6	Jointly owned with City	Fair/poor; pruned for hydro clearance	Remove	Conflict with swale and grading
86	Blue beech (Carpinus caroliniana)	5	1.1	City	Good	Relocate	Consider transplanting in the fall
87	Blue beech (Carpinus caroliniana)	6	1.3	City	Good	Relocate	Consider transplanting in the fall
88	Red maple (Acer rubrum)	70,30	16.6	City	Fair; heavy vine presence, slow growth, multi-stems	Retain	Minimize root disturbance during pathway development, any root pruning to be manual
89	American elm (Ulmus americana)	16	3.4	City	Fair/poor; heavy vines, conflict with fence	Remove	Conflict with fence and poor health
90	Manitoba maple (Acer negundo)	15	3.2	City	Poor; topped for hydro clearance	Remove	Conflict with swale and grading
91	American elm (Ulmus americana)	26	5.5	City	Fair; growing in fence, conflict with hydro lines	Remove	Conflict with swale and grading
92	Honey locusts (Gleditsia triacanthos)	40	8.4	City	Good	Remove	Conflict with new fire hydrant
93	Manitoba maple (Acer negundo)	18	3.8	City	Poor	Remove	Conflict with swale and grading
94	Manitoba maple (Acer negundo)	12	2.5	City	Poor	Remove	Conflict with swale and grading
95	Ash (Fraxinus spp)	25	5.3	City	Dead	Remove	Conflict with swale and grading
96	Sugar maple (Acer saccharum)	10	2.1	City	Good	Retain	
97	Sugar maple (Acer saccharum)	14	2.9	City	Good	Retain	

Tree Groupings

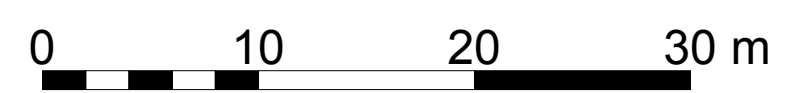
A	Manitoba maple (Acer negundo)	22 trees, dbh ranging 10-61, average = 24 cm	Adjacent properties, some possibly jointly owned with City	Fair
B	Manitoba maple (Acer negundo)	46 stems, 5-35 cm, average 20 cm	City	Fair; many in conflict with fence
C	Manitoba maple (Acer negundo) and American elm (Ulmus americana)	13 stems, 10-15 cm	City and adjacent property	Fair/good
D	Manitoba maple (Acer negundo) and American elm (Ulmus americana)	10 stems, 10-20 cm	City and adjacent property	Good/fair

GENERAL NOTES

1. ALL GENERAL SITE INFORMATION AND CONDITIONS COMPILED FROM ARCHITECTS, ENGINEERS, FORESTRY CONSULTANT PLANS, AND SURVEYS.
2. DO NOT SCALE THIS DRAWING.
3. REPORT ANY DISCREPANCIES PRIOR TO COMMENCING WORK. NO RESPONSIBILITY IS BORN BY THE LANDSCAPE ARCHITECT FOR UNKNOWN SUBSURFACE CONDITIONS.
4. REINSTATE ALL AREAS AND ITEMS DAMAGED AS A RESULT OF CONSTRUCTION ACTIVITIES TO THE SATISFACTION OF THE LANDSCAPE ARCHITECT.
5. DRAWING MAY NOT BE USED FOR CONSTRUCTION UNTIL SIGNED BY LANDSCAPE ARCHITECT AS ISSUED FOR CONSTRUCTION.
6. THE ACCURACY OF THE POSITION OF UTILITIES IS NOT GUARANTEED.
7. INDIVIDUAL UTILITY CO. MUST BE CONTACTED FOR CONFIRMATION OF UTILITY EXISTENCE AND LOCATION PRIOR TO DIGGING.
8. THIS DRAWING IS AN INSTRUMENT OF SERVICE AND REQUIRES THE PERMISSION OF THE LANDSCAPE ARCHITECT FOR USE. COPYRIGHT IS RESERVED BY THE LANDSCAPE ARCHITECT, DAVID M. LASHLEY.

LEGEND

- PROPERTY LINE
- x - x EXISTING FENCE TO REMAIN
- - - EXISTING FENCE TO BE REMOVED
- x - x PROPOSED NEW FENCE
- OHW EXISTING OVERHEAD HYDRO WIRE
- LS LIGHT STANDARD
- UP UTILITY POLE
- - - TREE PROTECTION FENCE
- EXISTING TREES TO RETAIN
- ⊗ PROPOSED LOCATION OF TRANSPLANTED TREE



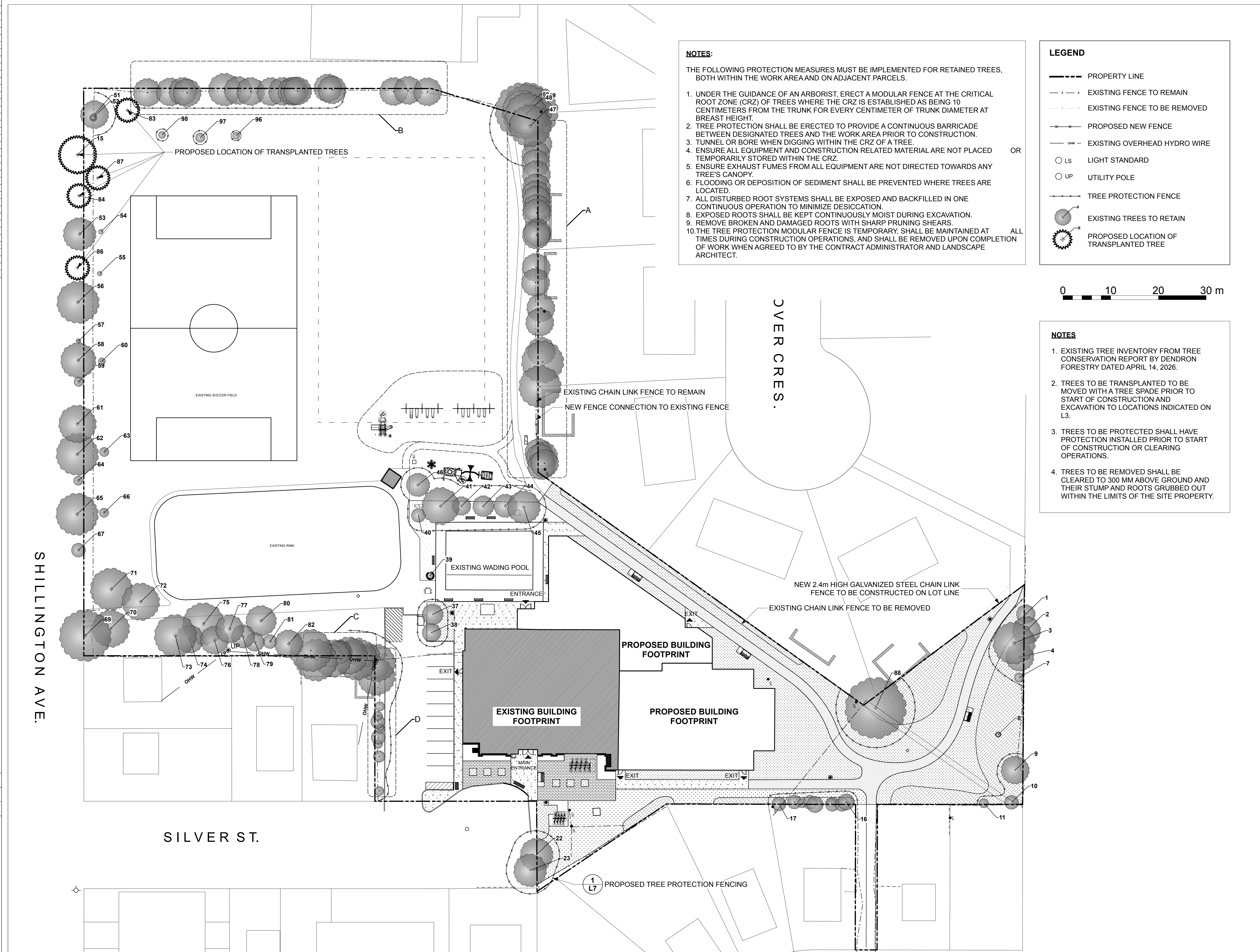
NOTES

1. EXISTING TREE INVENTORY FROM TREE CONSERVATION REPORT BY DENDRON FORESTRY DATED APRIL 14, 2026.
2. TREES TO BE TRANSPLANTED TO BE MOVED WITH A TREE SPADE PRIOR TO START OF CONSTRUCTION AND EXCAVATION TO LOCATIONS INDICATED ON L3.
3. TREES TO BE PROTECTED SHALL HAVE PROTECTION INSTALLED PRIOR TO START OF CONSTRUCTION OR CLEARING OPERATIONS.
4. TREES TO BE REMOVED SHALL BE CLEARED TO 300 MM ABOVE GROUND AND THEIR STUMP AND ROOTS GRUBBED OUT WITHIN THE LIMITS OF THE SITE PROPERTY.

NOTES:

THE FOLLOWING PROTECTION MEASURES MUST BE IMPLEMENTED FOR RETAINED TREES, BOTH WITHIN THE WORK AREA AND ON ADJACENT PARCELS.

1. UNDER THE GUIDANCE OF AN ARBORIST, ERECT A MODULAR FENCE AT THE CRITICAL ROOT ZONE (CRZ) OF TREES WHERE THE CRZ IS ESTABLISHED AS BEING 10 CENTIMETERS FROM THE TRUNK FOR EVERY CENTIMETER OF TRUNK DIAMETER AT BREST HEIGHT.
2. TREE PROTECTION SHALL BE ERECTED TO PROVIDE A CONTINUOUS BARRICADE BETWEEN DESIGNATED TREES AND THE WORK AREA PRIOR TO CONSTRUCTION.
3. TUNNEL OR BORE WHEN DIGGING WITHIN THE CRZ OF A TREE.
4. ENSURE ALL EQUIPMENT AND CONSTRUCTION RELATED MATERIAL ARE NOT PLACED TEMPORARILY STORED WITHIN THE CRZ.
5. ENSURE EXHAUST FUMES FROM ALL EQUIPMENT ARE NOT DIRECTED TOWARDS ANY TREE'S CANOPY.
6. FLOODING OR DEPOSITION OF SEDIMENT SHALL BE PREVENTED WHERE TREES ARE LOCATED.
7. ALL DISTURBED ROOT SYSTEMS SHALL BE EXPOSED AND BACKFILLED IN ONE CONTINUOUS OPERATION TO MINIMIZE DESICCATION.
8. EXPOSED ROOTS SHALL BE KEPT CONTINUOUSLY MOIST DURING EXCAVATION.
9. REMOVE BROKEN AND DAMAGED ROOTS WITH SHARP PRUNING SHEARS.
10. THE TREE PROTECTION MODULAR FENCE IS TEMPORARY, SHALL BE MAINTAINED AT ALL TIMES DURING CONSTRUCTION OPERATIONS, AND SHALL BE REMOVED UPON COMPLETION OF WORK WHEN AGREED TO BY THE CONTRACT ADMINISTRATOR AND LANDSCAPE ARCHITECT.



6			
5			
4			
3			

2	SITE PLAN SUBMISSION	260414	DL
1	ISSUED FOR 3% SUBMISSION	260325	KJ
NUMBER	MILESTONE / FAT SALLANT	DATE: (Y/M/D)	INITIALS
DESIGNED BY / CONCEPTEUR	DL/KJ	CHECKED BY / VERIFIEUR	DL
DRAWN BY / DESINEUR	KJ	SCALE: ECHELLE	AS NOTED

DETAIL NUMBER
1 DRAWING TITLE
SCALE:
SHEET NUMBER

THIS DRAWING IS THE PROPERTY OF THE CITY OF OTTAWA AND ALL COPYRIGHT IS RESERVED. DIMENSIONS ON DRAWING ARE FOR ESTIMATING PURPOSES ONLY. IT IS THE RESPONSIBILITY OF EACH CONTRACTOR AND SUB-CONTRACTOR OR CONSULTANT TO CHECK AND VERIFY ALL DIMENSIONS AND CONDITIONS ON SITE. NOTIFY OWNER OF ANY ERRORS OR OMISSIONS PRIOR TO COMMENCING THE WORK. DO NOT SCALE THE DRAWINGS.

CE DESSIN CONSTITUE LA PROPRIÉTÉ DE LA VILLE D'OTTAWA ET TOUT DROIT D'AUTEUR EST RÉSERVÉ. LES DIMENSIONS UTILISÉES LE SONT À DES FINS D'ESTIMATION SEULEMENT. IL INCOMBE À CHAQUE ENTREPRENEUR, SOUS-CONTRACTANT OU CONSULTANT DE VÉRIFIER TOUTES LES DIMENSIONS ET LES CONDITIONS SUR LE CHANTIER. AVANT D'ENTAMER LES TRAVAUX, NE DRESSEZ PAS LES PLANS À L'ÉCHELLE.

ARCHITECT / ARCHITECTE

CONSULTANT / EXPERT-CONSEIL

CONSULTANT / EXPERT-CONSEIL

CONSULTANT / EXPERT-CONSEIL

PROJECT / LOCATION / PROJET / ENDROIT
ALEXANDER COMMUNITY CENTRE EXPANSION

950 Silver Street
OTTAWA, ONTARIO

DRAWING / DESSIN
TREE PROTECTION PLAN

GENERAL NOTES

1. ALL GENERAL SITE INFORMATION AND CONDITIONS COMPILED FROM ARCHITECTS, ENGINEERS, FORESTRY CONSULTANT PLANS, AND SURVEYS.
2. DO NOT SCALE THIS DRAWING.
3. REPORT ANY DISCREPANCIES PRIOR TO COMMENCING WORK. NO RESPONSIBILITY IS BORN BY THE LANDSCAPE ARCHITECT FOR UNKNOWN SUBSURFACE CONDITIONS.
4. REINSTATE ALL AREAS AND ITEMS DAMAGED AS A RESULT OF CONSTRUCTION ACTIVITIES TO THE SATISFACTION OF THE LANDSCAPE ARCHITECT.
5. DRAWING MAY NOT BE USED FOR CONSTRUCTION UNTIL SIGNED BY LANDSCAPE ARCHITECT AS ISSUED FOR CONSTRUCTION.
6. THE ACCURACY OF THE POSITION OF UTILITIES IS NOT GUARANTEED.
7. INDIVIDUAL UTILITY CO. MUST BE CONTACTED FOR CONFIRMATION OF UTILITY EXISTENCE AND LOCATION PRIOR TO DIGGING.
8. THIS DRAWING IS AN INSTRUMENT OF SERVICE AND REQUIRES THE PERMISSION OF THE LANDSCAPE ARCHITECT FOR USE. COPYRIGHT IS RESERVED BY THE LANDSCAPE ARCHITECT, DAVID M. LASHLEY.

6			
5			
4			
3			
2	SITE PLAN SUBMISSION	26/04/14	DL
1	ISSUED FOR 30% SUBMISSION	26/03/25	KJ

NUMBER	MILESTONE / FAT SALLANT	DATE: (Y/M/D)	INITIALS
DESIGNED BY / CONCEVU PAR	DL/KJ	CHECKED BY / VERIFIE PAR	DL
DRAWN BY / DESINE PAR	KJ	SCALE: ECHELLE	AS NOTED

DETAIL NUMBER
1 DRAWING TITLE
A1.1 SCALE:
SHEET NUMBER

THIS DRAWING IS THE PROPERTY OF THE CITY OF OTTAWA AND ALL COPYRIGHT IS RESERVED. DIMENSIONS ON DRAWING ARE FOR ESTIMATING PURPOSES ONLY. IT IS THE RESPONSIBILITY OF EACH CONTRACTOR AND SUB-CONTRACTOR OR CONSULTANT TO CHECK AND VERIFY ALL DIMENSIONS AND CONDITIONS ON SITE. NOTIFY OWNER OF ANY ERRORS OR OMISSIONS PRIOR TO COMMENCING THE WORK. DO NOT SCALE THE DRAWINGS.

CE DESSIN CONSTITUE LA PROPRIÉTÉ DE LA VILLE D'OTTAWA ET TOUT DROIT D'AUTEUR EST RÉSERVÉ. LES DIMENSIONS UTILISÉES LE SONT À DES FINS D'ESTIMATION SEULEMENT. IL INCOMBE À CHAQUE ENTREPRENEUR, SOUS-CONTRACTANT OU CONSULTANT DE VÉRIFIER TOUTES LES DIMENSIONS ET LES CONDITIONS SUR LE CHANTIER. VEUILLEZ INFORMER LE PROPRIÉTAIRE DE TOUTE ERREUR OU OMISSION AVANT D'ENTAMER LES TRAVAUX. NE DRESSEZ PAS LES PLANS À L'ÉCHELLE.

ARCHITECT / ARCHITECTE

CONSULTANT / EXPERT-CONSEIL

CONSULTANT / EXPERT-CONSEIL

CONSULTANT / EXPERT-CONSEIL

PROJECT / LOCATION / PROJET / ENDROIT

ALEXANDER COMMUNITY CENTRE EXPANSION

950 Silver Street
OTTAWA, ONTARIO

DRAWING / DESSIN

LANDSCAPE PLAN

BUSINESS ENTITY / NUMÉRO DE L'ENTITÉ
BUILDING NUMBER / NUMÉRO DU BÂTIMENT

SHEET NO. / FEUILLE NO.

CITY PROJECT NO. / NUMÉRO DE PROJET
CF001822

CONS. PROJECT NO. / NUMÉRO DE PROJET
25907-1

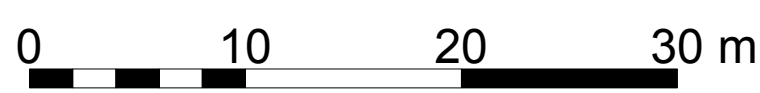
L4

LEGEND

— — — — —	PROPERTY LINE	[Pattern]	TOPSOIL AND SOD	[Symbol]	LANDSCAPE BOULDER
- - - - -	EXISTING FENCE TO REMAIN	[Pattern]	UNIT PAVER	[Symbol]	TYPICAL WASTE RECEPTACLE
- - - - -	EXISTING FENCE TO BE REMOVED	[Pattern]	CONCRETE PAVING	[Symbol]	EXISTING TREE TO RETAIN
- - - - -	PROPOSED NEW FENCE	[Pattern]	ASPHALT PAVING	[Symbol]	TRANSPLANTED TREE
— OHW —	EXISTING OVERHEAD HYDRO WIRE	[Pattern]	MULCHED PLANTING BED	[Symbol]	PROPOSED PLANTING
— — — — —	TREE PROTECTION FENCING	[Pattern]	PEASTONE	[Symbol]	ULTIMATE TREE CANOPY
○ LS	LIGHT STANDARD	[Pattern]	SOIL CELL AREA	[Symbol]	
○ UP	UTILITY POLE	[Pattern]	EXISTING BENCH TO REMAIN	[Symbol]	
⦿ FH	FIRE HYDRANT	[Pattern]	ACCESSIBLE BENCH	[Symbol]	
■ CB	CATCH BASIN	[Pattern]		[Symbol]	

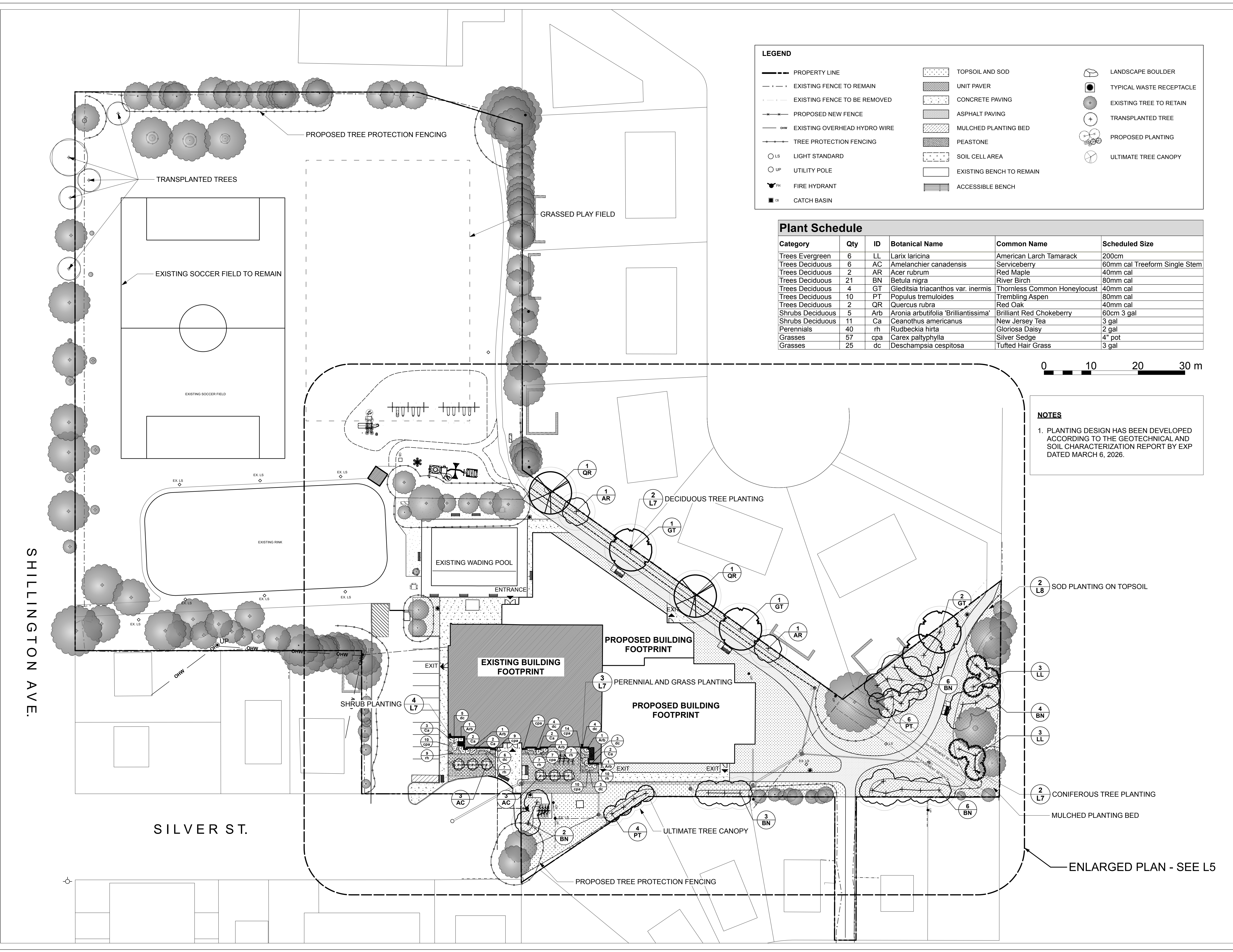
Plant Schedule

Category	Qty	ID	Botanical Name	Common Name	Scheduled Size
Trees Evergreen	6	LL	Larix laricina	American Larch Tamarack	200cm
Trees Deciduous	6	AC	Amelanchier canadensis	Serviceberry	60mm cal Treeform Single Stem
Trees Deciduous	2	AR	Acer rubrum	Red Maple	40mm cal
Trees Deciduous	21	BN	Betula nigra	River Birch	80mm cal
Trees Deciduous	4	GT	Gleditsia triacanthos var. inermis	Thornless Common Honeylocust	40mm cal
Trees Deciduous	10	PT	Populus tremuloides	Trembling Aspen	80mm cal
Trees Deciduous	2	QR	Quercus rubra	Red Oak	40mm cal
Shrubs Deciduous	5	Arb	Aronia arbutifolia 'Brilliantissima'	Brilliant Red Chokeberry	60cm 3 gal
Shrubs Deciduous	11	Ca	Ceanothus americanus	New Jersey Tea	3 gal
Perennials	40	rh	Rudbeckia hirta	Gloriosa Daisy	2 gal
Grasses	57	cpa	Carex patyphylla	Silver Sedge	4" pot
Grasses	25	dc	Deschampsia cespitosa	Tufted Hair Grass	3 gal



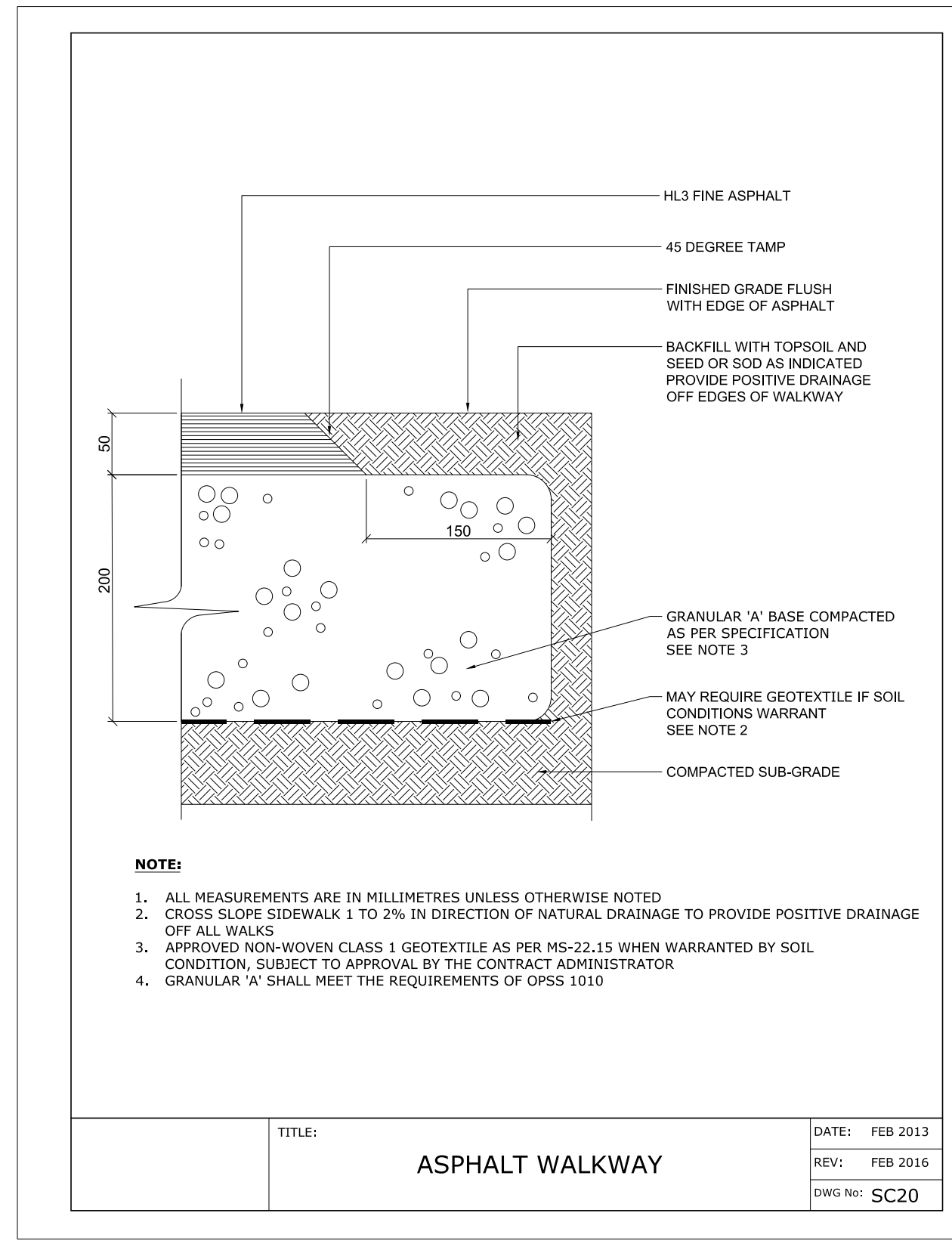
NOTES

1. PLANTING DESIGN HAS BEEN DEVELOPED ACCORDING TO THE GEOTECHNICAL AND SOIL CHARACTERIZATION REPORT BY EXP DATED MARCH 6, 2026.

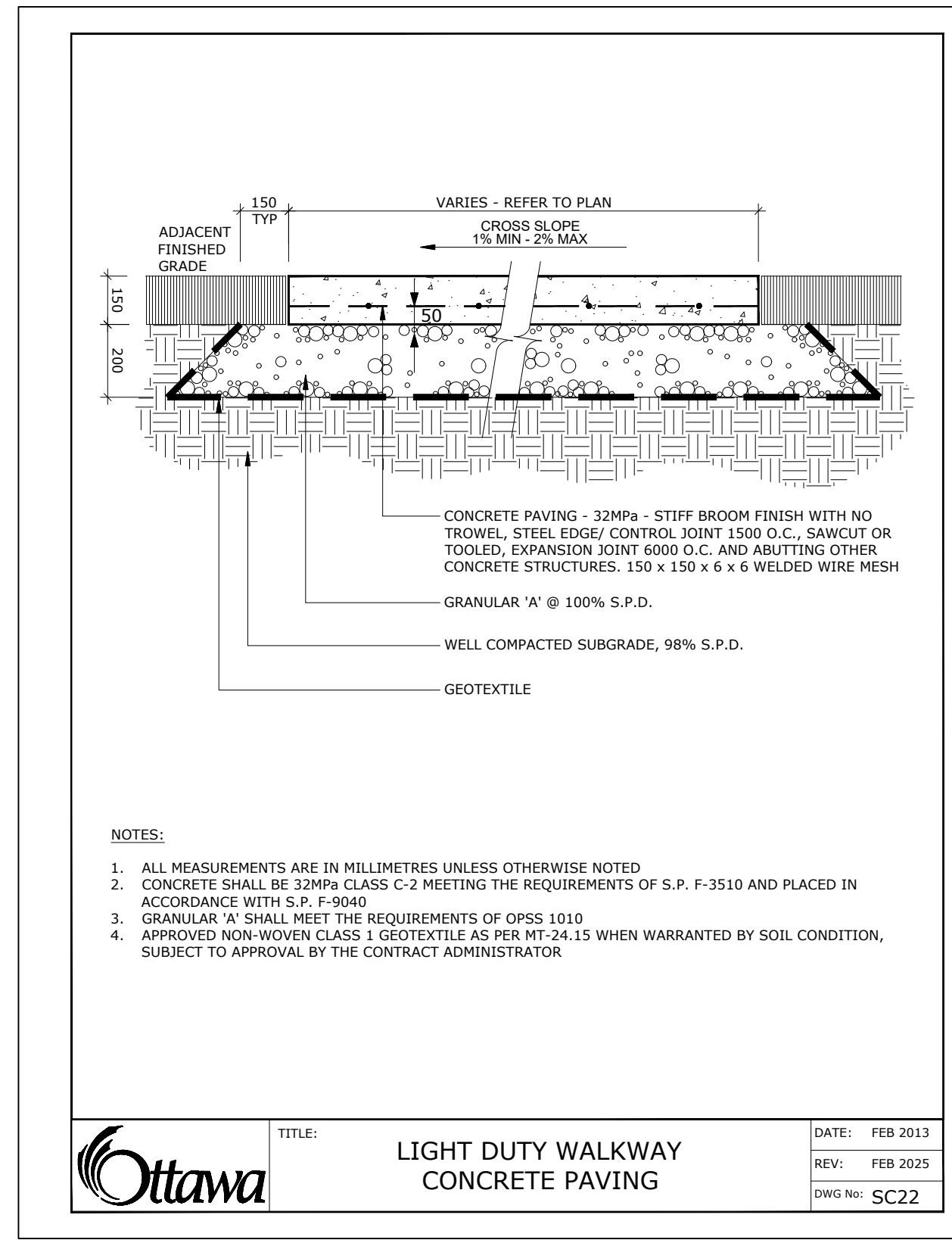


SHILLINGTON AVE.

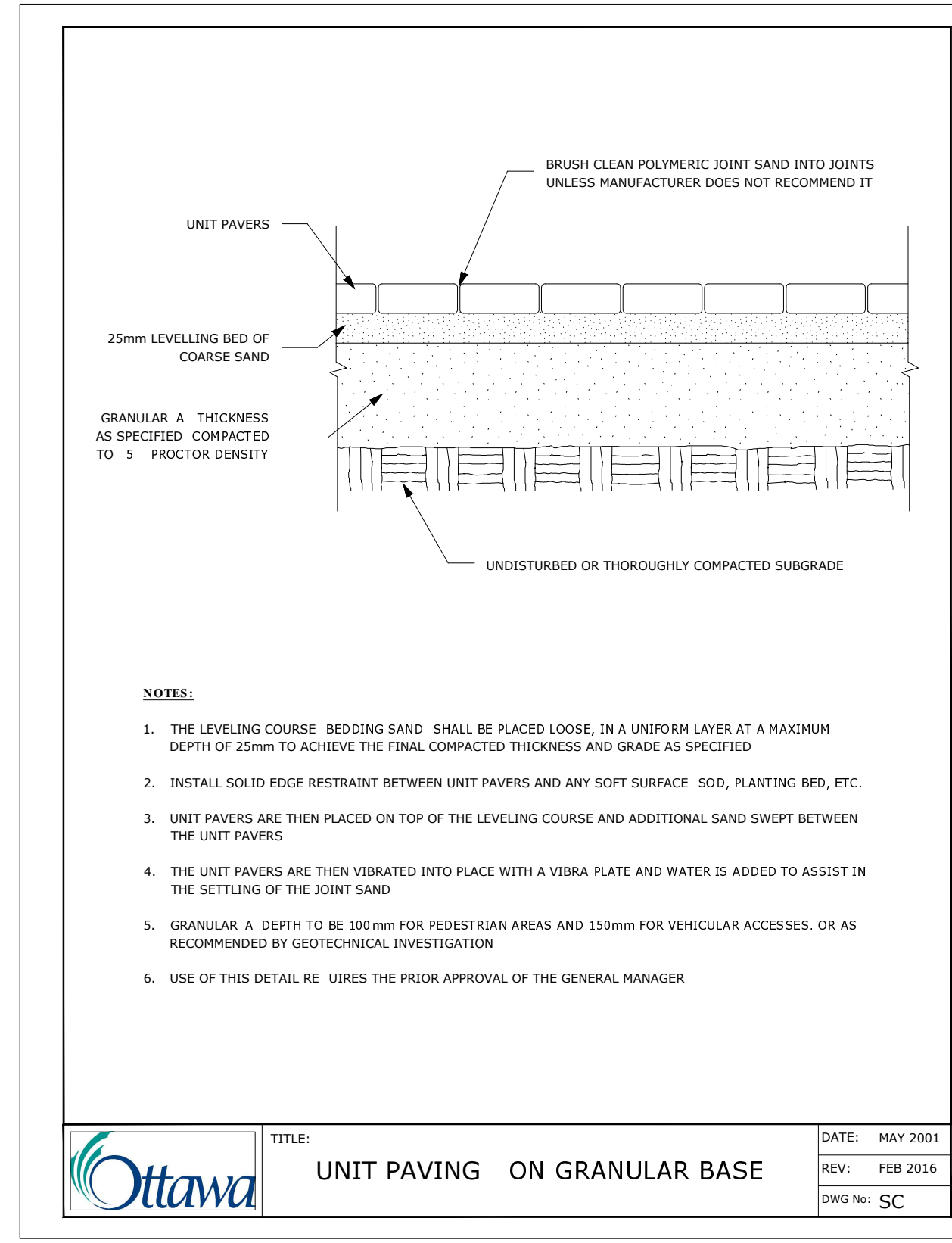
SILVER ST.



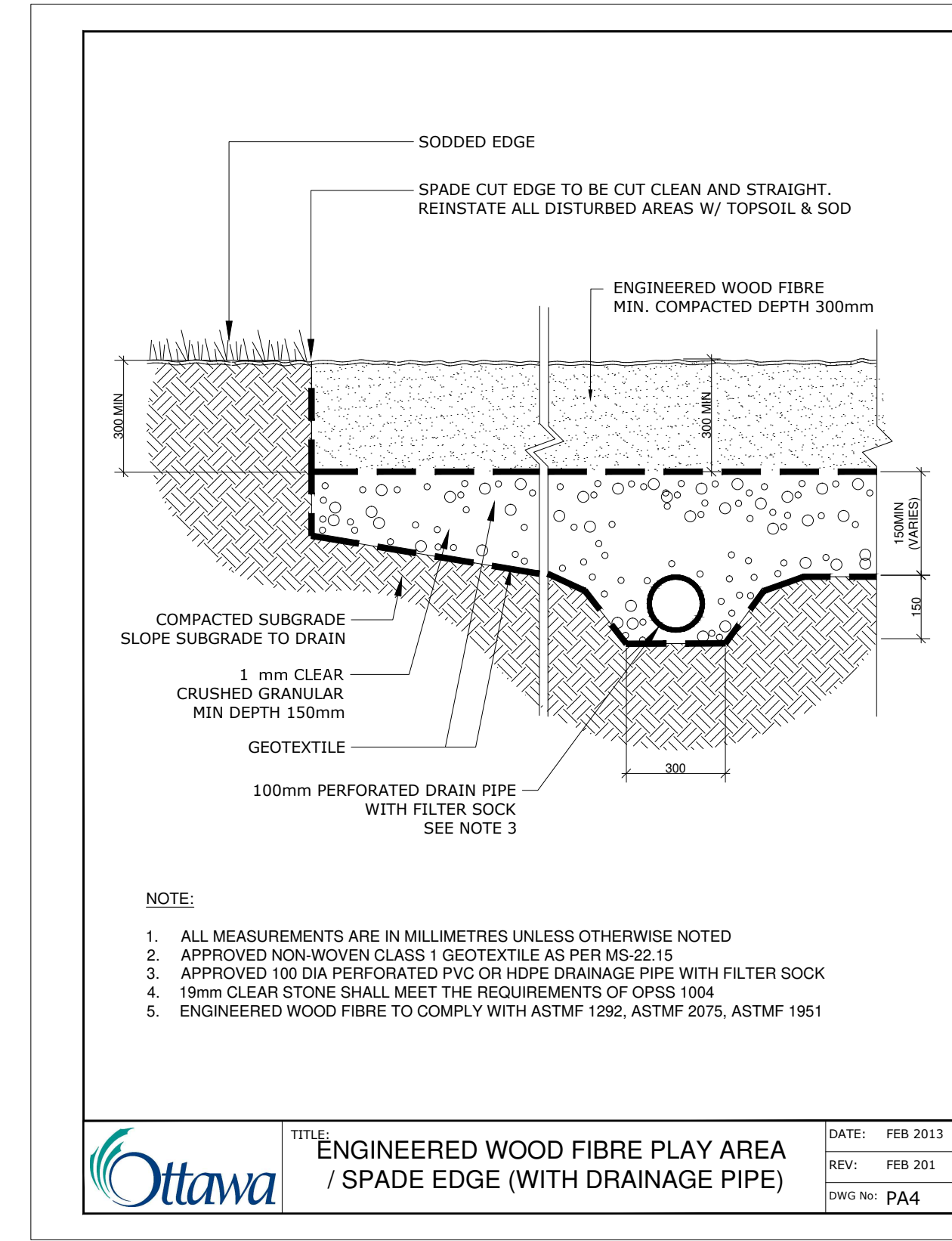
1 L6 ASPHALT WALKWAY
Scale: As Noted



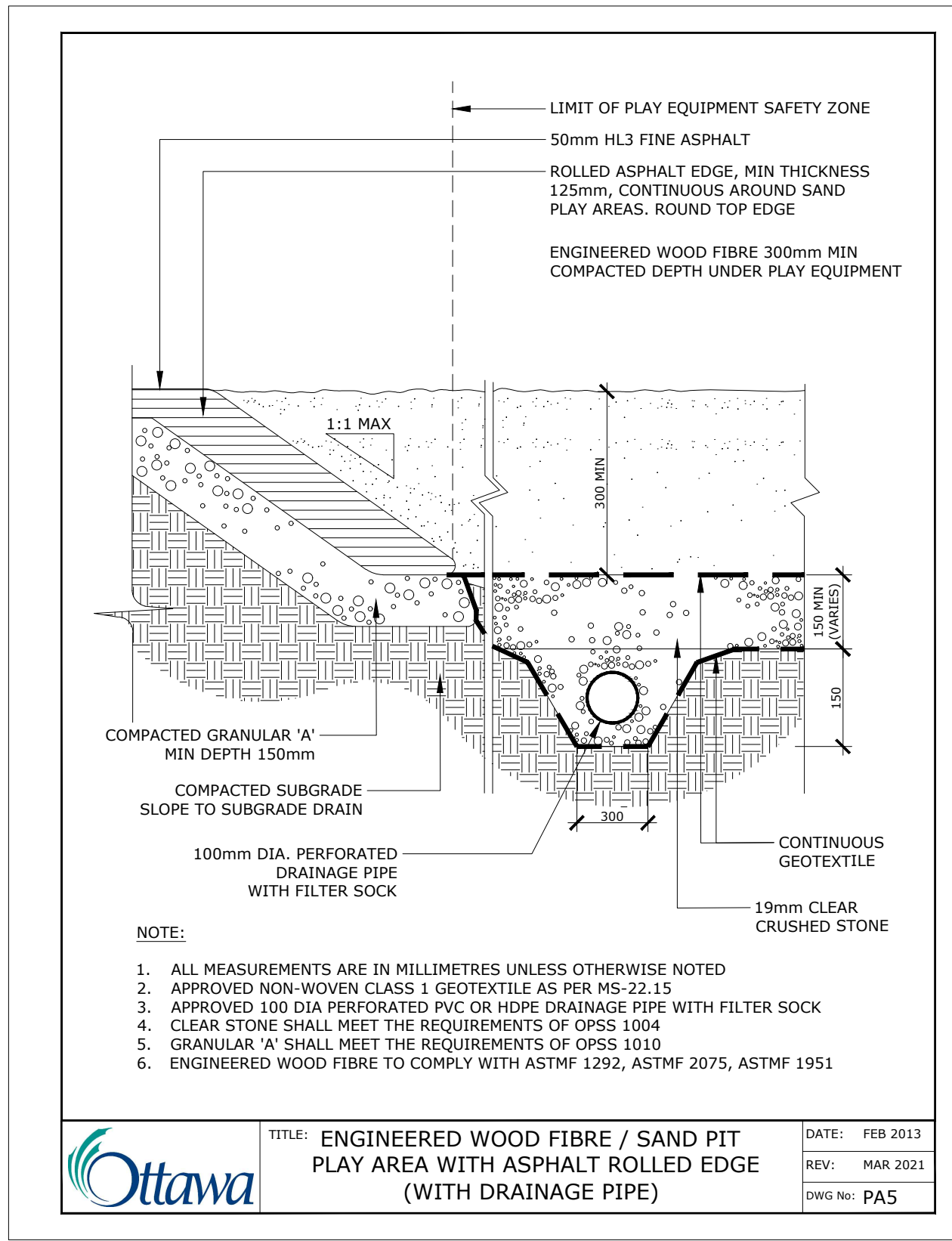
2 L6 LIGHT DUTY WALKWAY CONCRETE PAVING
Scale: As Noted



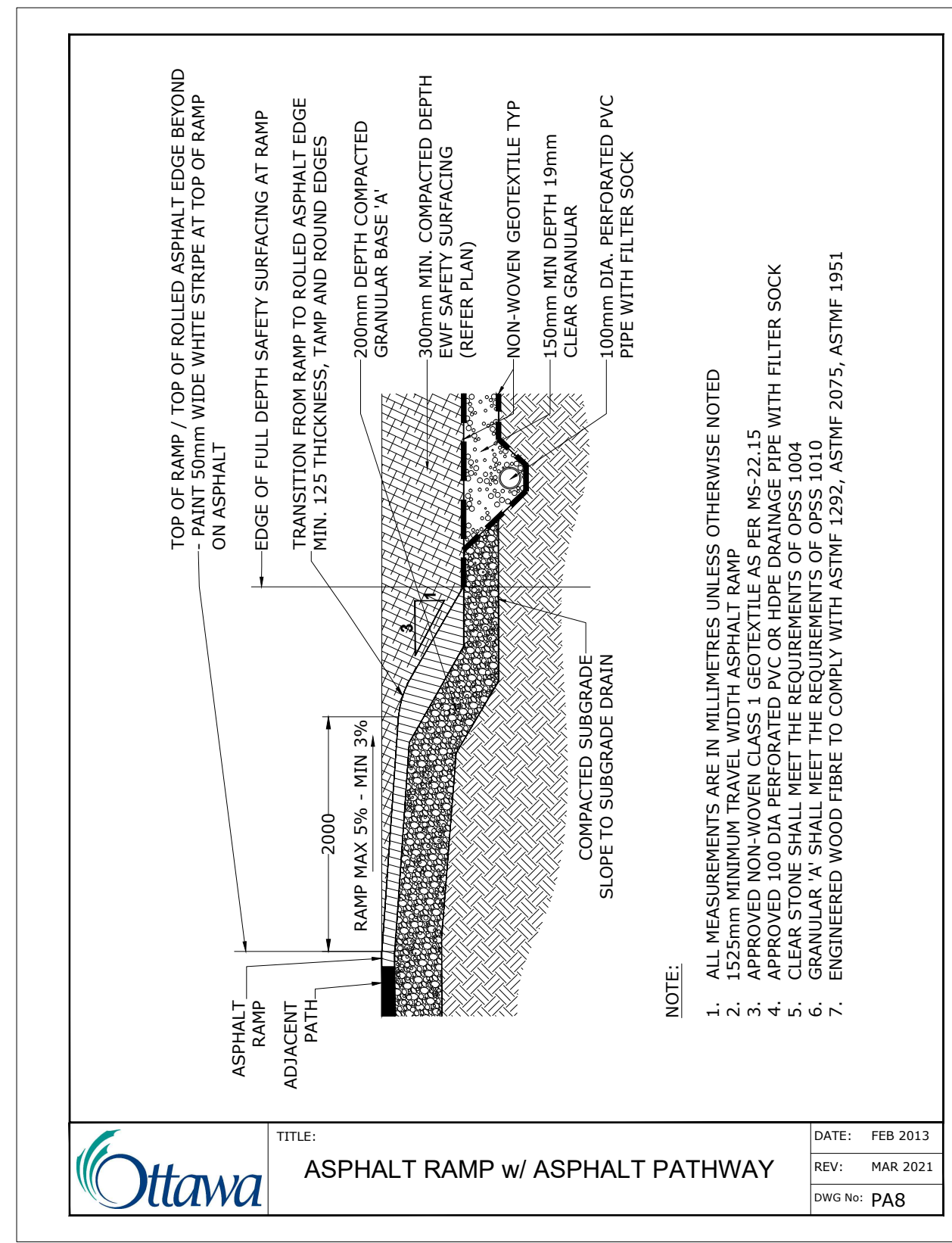
3 L6 UNIT PAVING - ON GRANULAR BASE
Scale: As Noted



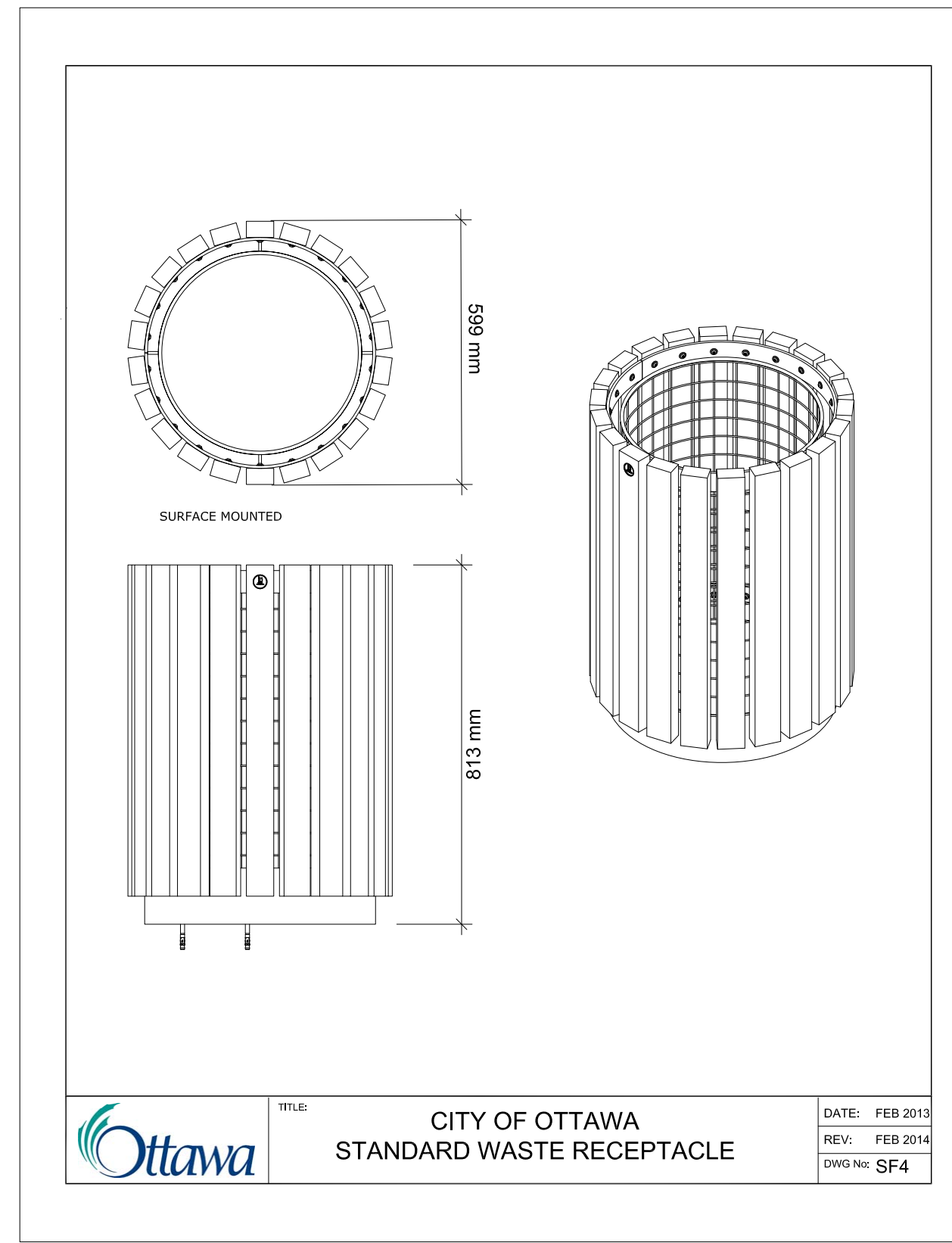
4 L6 FUTURE CONSIDERATION FOR EWF PLAY AREA / SPADE EDGE
Scale: As Noted



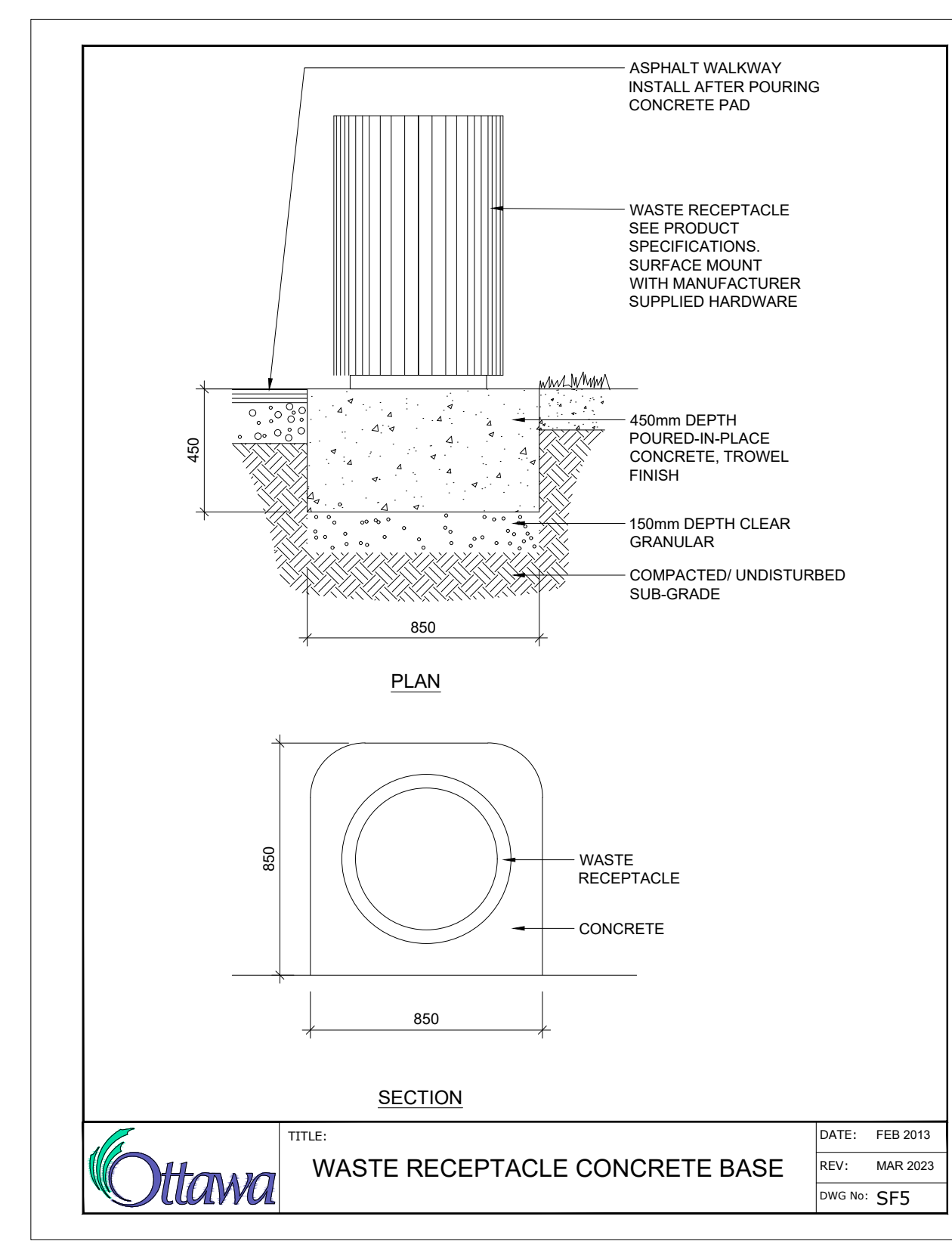
5 L6 FUTURE CONSIDERATION FOR EWF / SAND PIT
Scale: As Noted



6 L6 FUTURE CONSIDERATION FOR ASPHALT RAMP / ASPHALT PATHWAY
Scale: As Noted



7 L6 TYPICAL WASTE RECEPTACLE
Scale: As Noted



8 L6 WASTE RECEPTACLE CONCRETE BASE
Scale: As Noted

GENERAL NOTES

- ALL GENERAL SITE INFORMATION AND CONDITIONS COMPILED FROM ARCHITECTS, ENGINEERS, FORESTRY CONSULTANT PLANS, AND SURVEYS.
- DO NOT SCALE THIS DRAWING.
- REPORT ANY DISCREPANCIES PRIOR TO COMMENCING WORK. NO RESPONSIBILITY IS BORN BY THE LANDSCAPE ARCHITECT FOR UNKNOWN SUBSURFACE CONDITIONS.
- REINSTATE ALL AREAS AND ITEMS DAMAGED AS A RESULT OF CONSTRUCTION ACTIVITIES TO THE SATISFACTION OF THE LANDSCAPE ARCHITECT.
- DRAWING MAY NOT BE USED FOR CONSTRUCTION UNTIL SIGNED BY LANDSCAPE ARCHITECT AS ISSUED FOR CONSTRUCTION.
- THE ACCURACY OF THE POSITION OF UTILITIES IS NOT GUARANTEED.
- INDIVIDUAL UTILITY CO. MUST BE CONTACTED FOR CONFIRMATION OF UTILITY EXISTENCE AND LOCATION PRIOR TO DIGGING.
- THIS DRAWING IS AN INSTRUMENT OF SERVICE AND REQUIRES THE PERMISSION OF THE LANDSCAPE ARCHITECT FOR USE. COPYRIGHT IS RESERVED BY THE LANDSCAPE ARCHITECT, DAVID M. LASHLEY.

6			
5			
4			
3			
2	SITE PLAN SUBMISSION	26/04/14	DL
1	ISSUED FOR 3% SUBMISSION	26/03/25	KJ
NUMBER	MILESTONE / FAT SALLANT	DATE: (Y/M/D)	INITIALS

DESIGNED BY / CONCEPTEUR	DL/KJ	CHECKED BY / VERIFIE PAR	DL
DRAWN BY / DESIGNE PAR	KJ	SCALE / ECHELLE	AS NOTED
1 DRAWING TITLE		SCALE:	
DETAIL NUMBER		SHEET NUMBER	

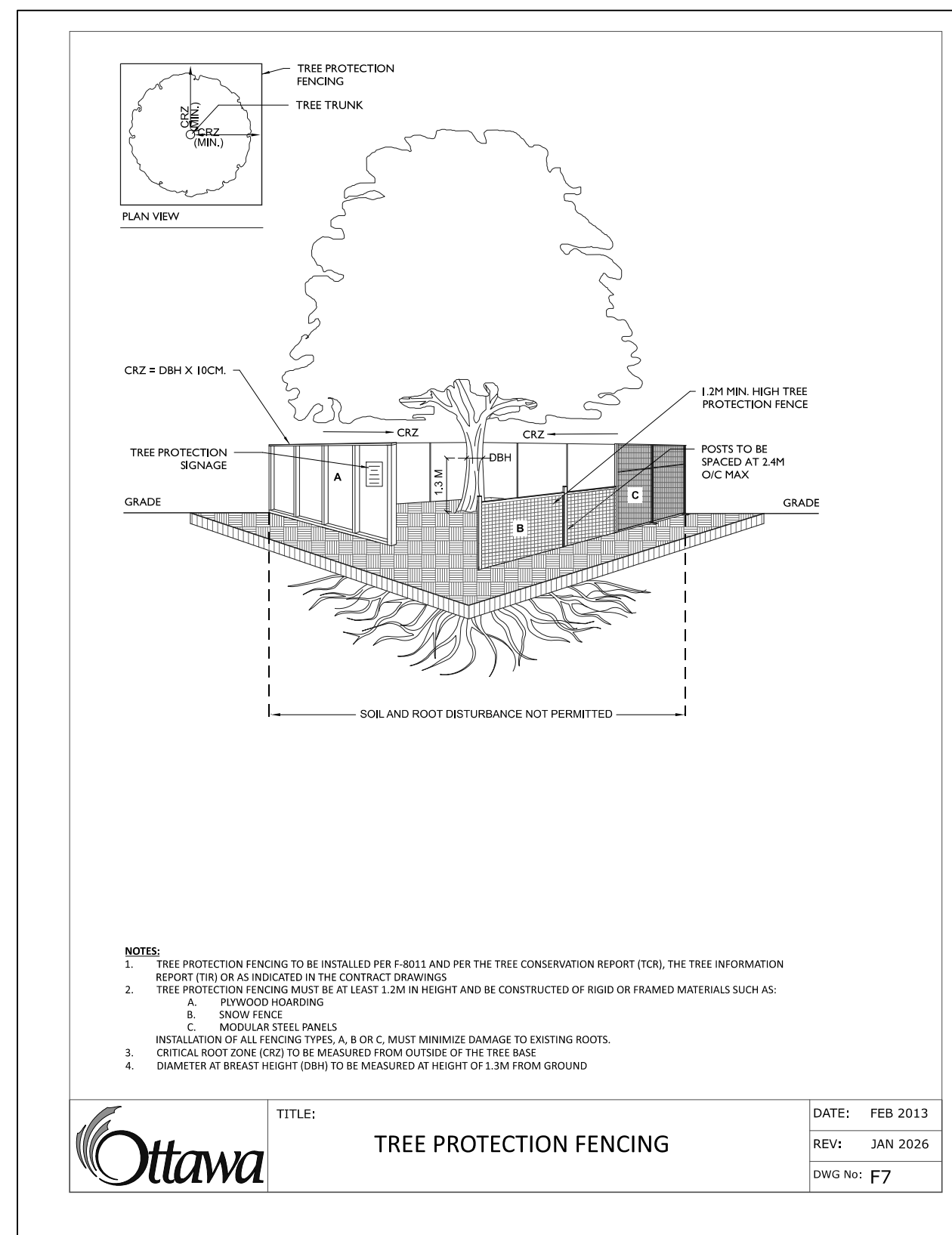
THIS DRAWING IS THE PROPERTY OF THE CITY OF OTTAWA AND ALL COPYRIGHT IS RESERVED. DIMENSIONS ON DRAWING ARE FOR ESTIMATING PURPOSES ONLY. IT IS THE RESPONSIBILITY OF EACH CONTRACTOR AND SUB-CONTRACTOR OR CONSULTANT TO CHECK AND VERIFY ALL DIMENSIONS AND CONDITIONS ON SITE. NOTIFY OWNER OF ANY ERRORS OR OMISSIONS PRIOR TO COMMENCING THE WORK. DO NOT SCALE THE DRAWINGS.

CE DESSIN CONSTITUE LA PROPRIÉTÉ DE LA VILLE D'OTTAWA ET TOUT DROIT D'AUTEUR EST RÉSERVÉ. LES DIMENSIONS UTILISÉES LE SONT À DES FINS D'ESTIMATION SEULEMENT. IL INCOMBE À CHAQUE ENTREPRENEUR, SOUS-CONTRACTANT OU CONSULTANT DE VÉRIFIER TOUTES LES DIMENSIONS ET LES CONDITIONS SUR LE CHANTIER. VEUILLEZ INFORMER LE PROPRIÉTAIRE DE TOUTE ERREUR OU OMISSION AVANT D'ENTAMER LES TRAVAUX. NE DRESSEZ PAS LES PLANS À L'ÉCHELLE.

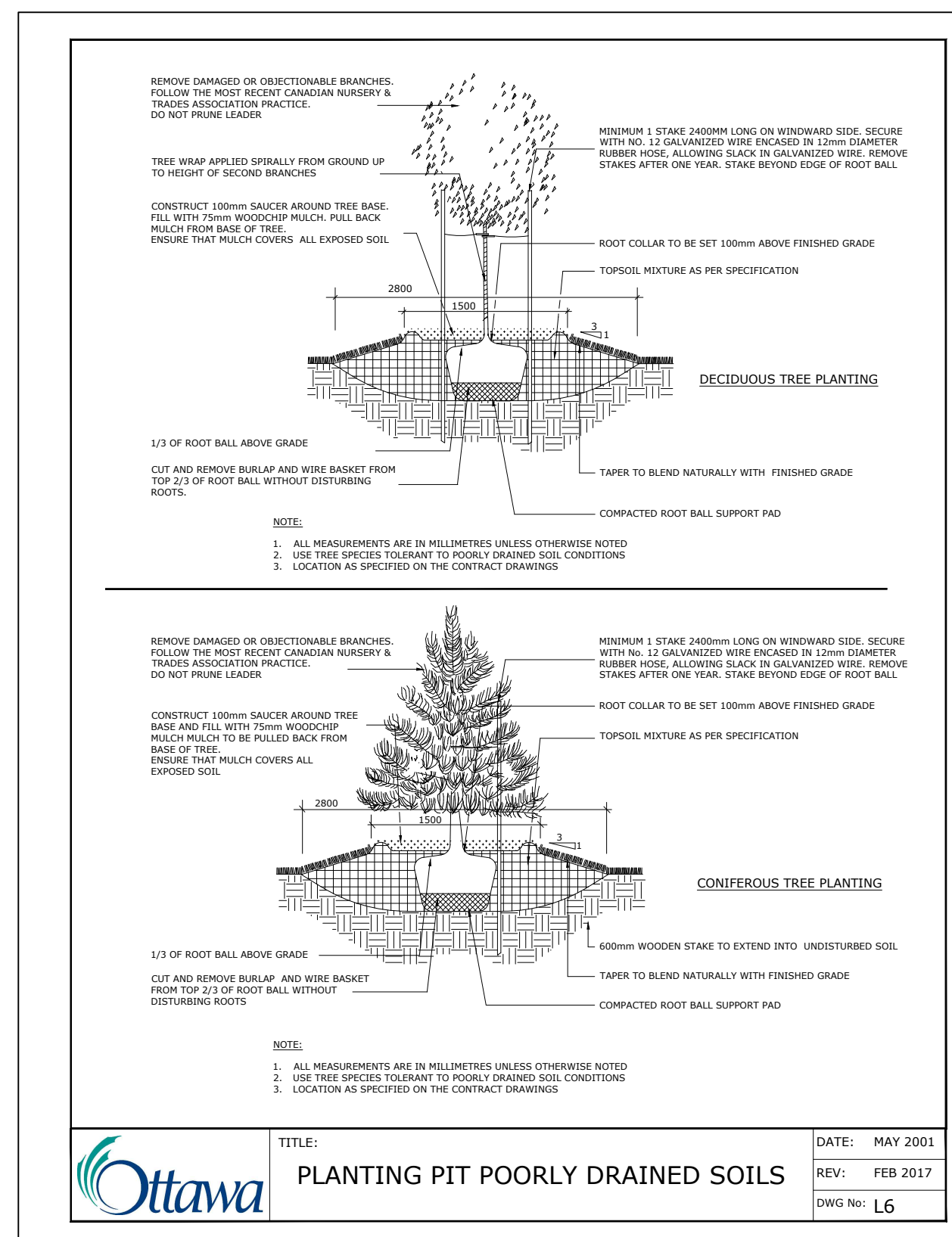
ARCHITECT / ARCHITECTE	CONSULTANT / EXPERT-CONSEIL
CONSULTANT / EXPERT-CONSEIL	CONSULTANT / EXPERT-CONSEIL

GENERAL NOTES

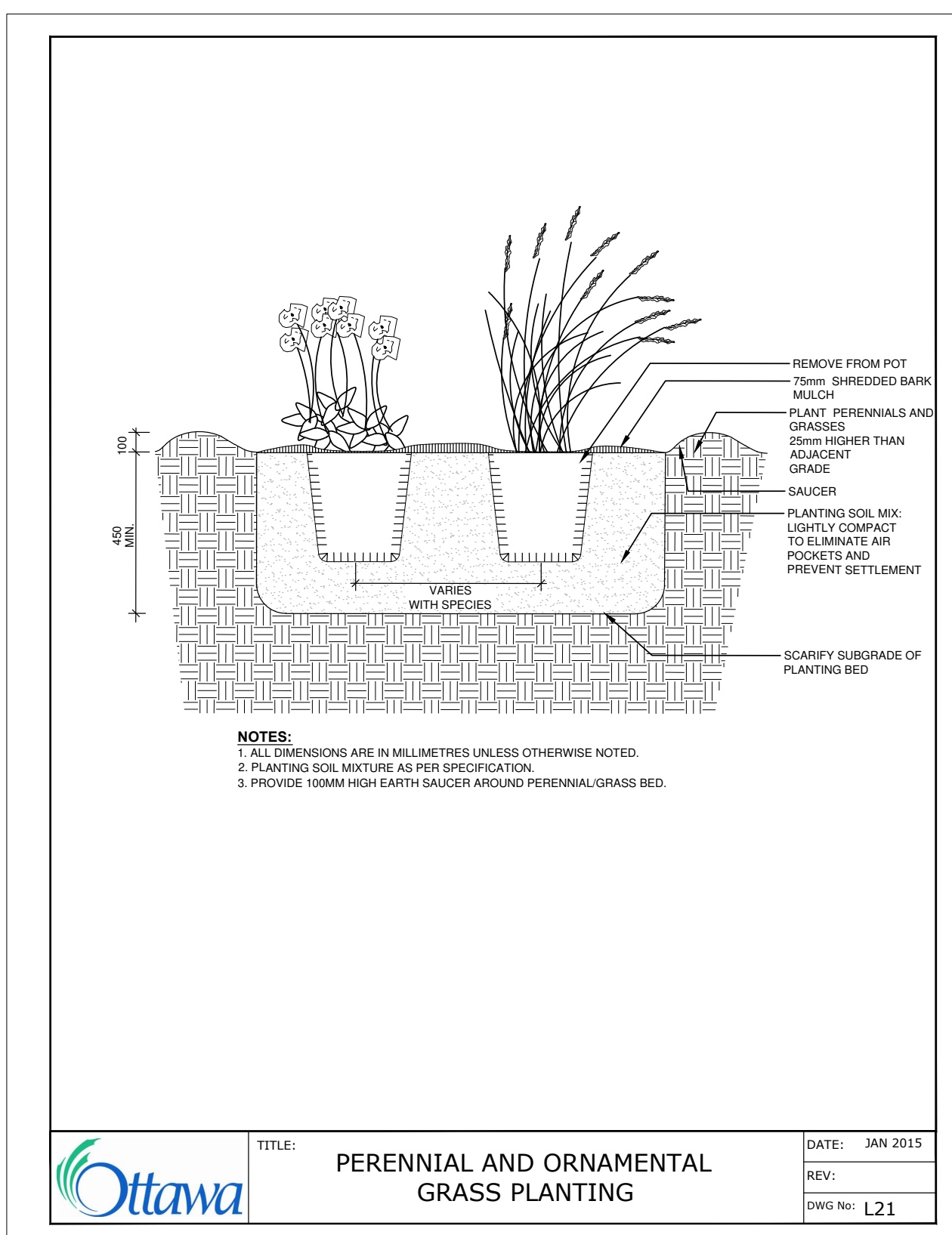
1. ALL GENERAL SITE INFORMATION AND CONDITIONS COMPILED FROM ARCHITECTS, ENGINEERS, FORESTRY CONSULTANT PLANS, AND SURVEYS.
2. DO NOT SCALE THIS DRAWING.
3. REPORT ANY DISCREPANCIES PRIOR TO COMMENCING WORK. NO RESPONSIBILITY IS BORN BY THE LANDSCAPE ARCHITECT FOR UNKNOWN SUBSURFACE CONDITIONS.
4. REINSTATE ALL AREAS AND ITEMS DAMAGED AS A RESULT OF CONSTRUCTION ACTIVITIES TO THE SATISFACTION OF THE LANDSCAPE ARCHITECT.
5. DRAWING MAY NOT BE USED FOR CONSTRUCTION UNTIL SIGNED BY LANDSCAPE ARCHITECT AS ISSUED FOR CONSTRUCTION.
6. THE ACCURACY OF THE POSITION OF UTILITIES IS NOT GUARANTEED.
7. INDIVIDUAL UTILITY CO. MUST BE CONTACTED FOR CONFIRMATION OF UTILITY EXISTENCE AND LOCATION PRIOR TO DIGGING.
8. THIS DRAWING IS AN INSTRUMENT OF SERVICE AND REQUIRES THE PERMISSION OF THE LANDSCAPE ARCHITECT FOR USE. COPYRIGHT IS RESERVED BY THE LANDSCAPE ARCHITECT, DAVID M. LASHLEY.



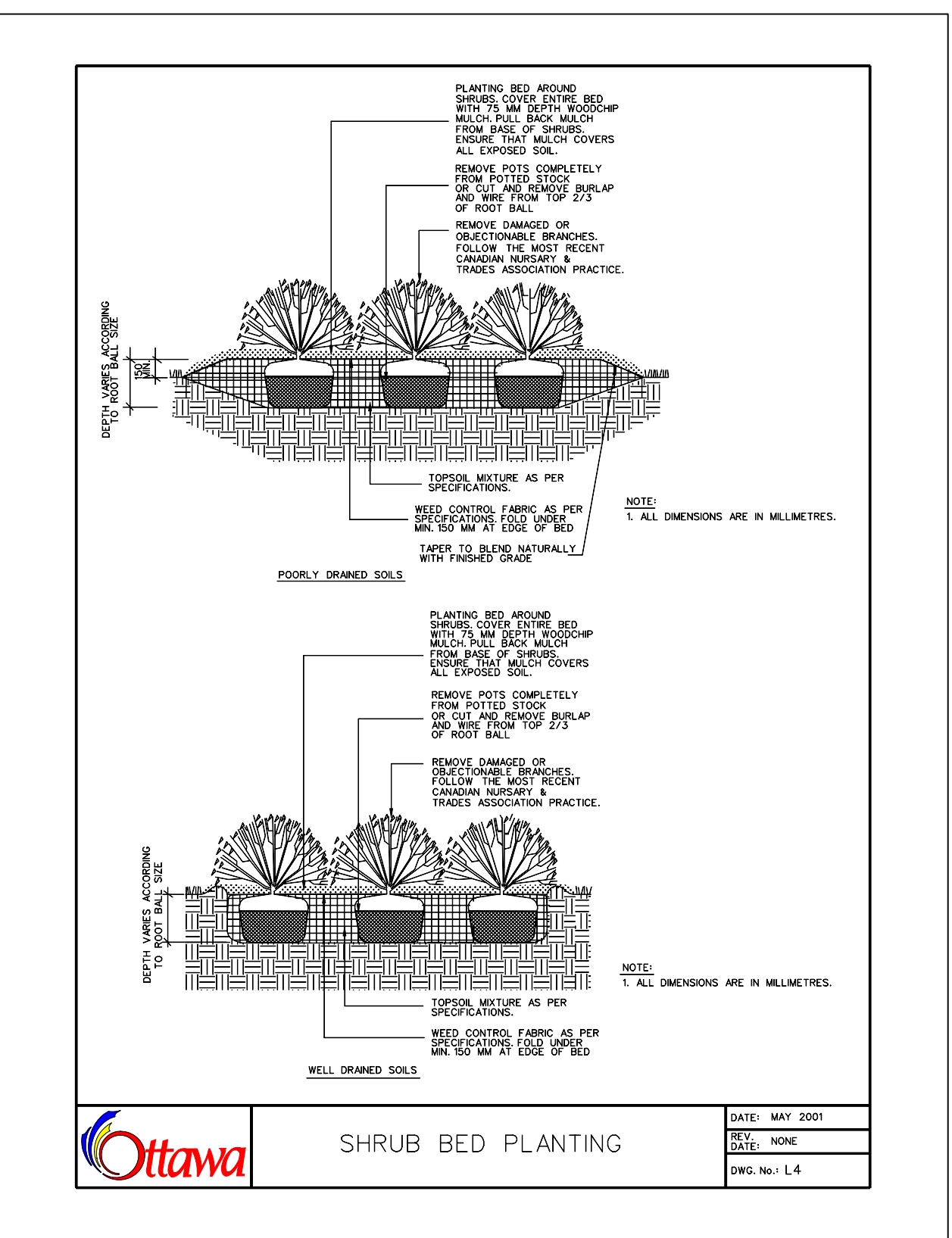
1 TREE PROTECTION FENCING
Scale: As Noted



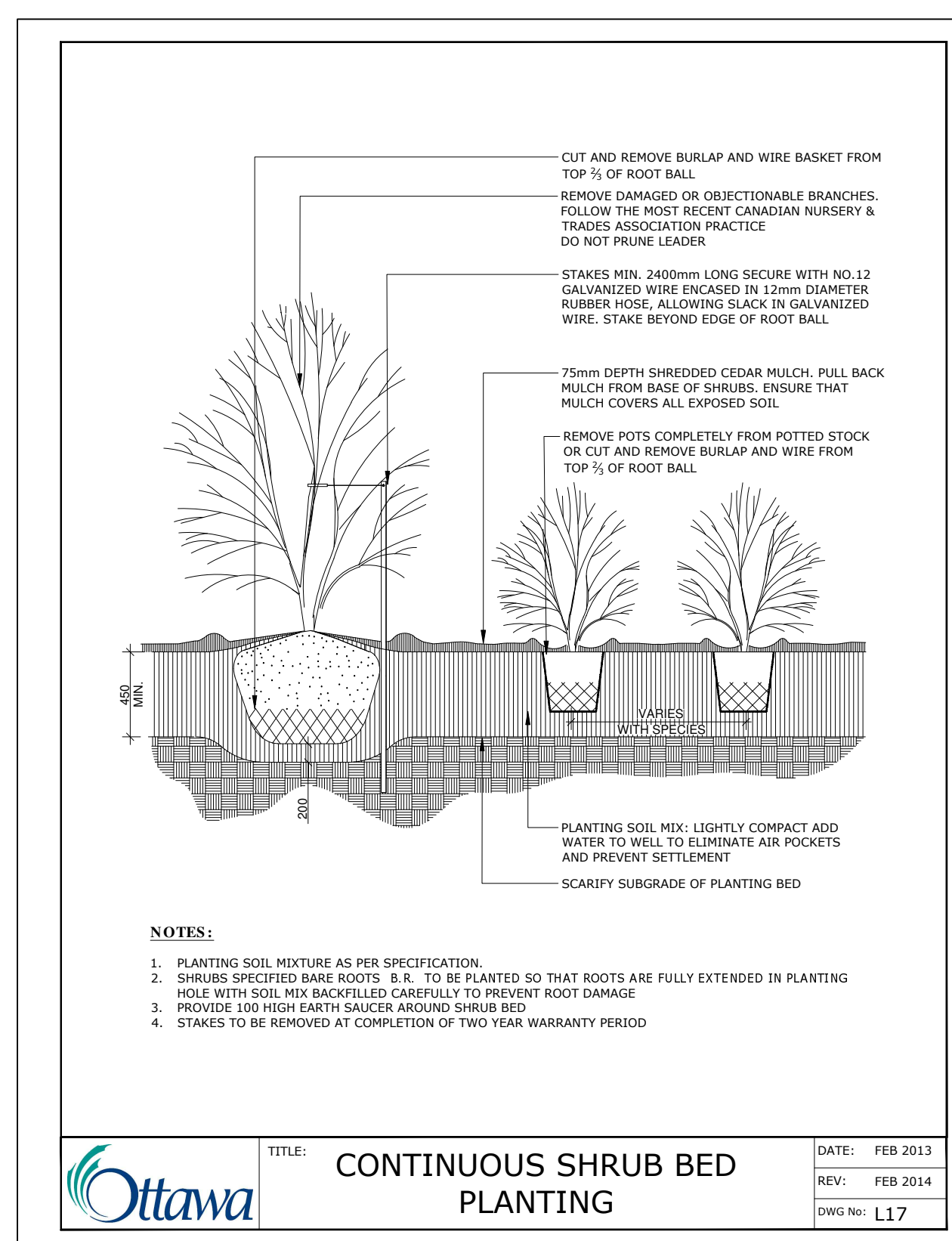
2 PLANTING PIT POORLY DRAINED SOILS
Scale: As Noted



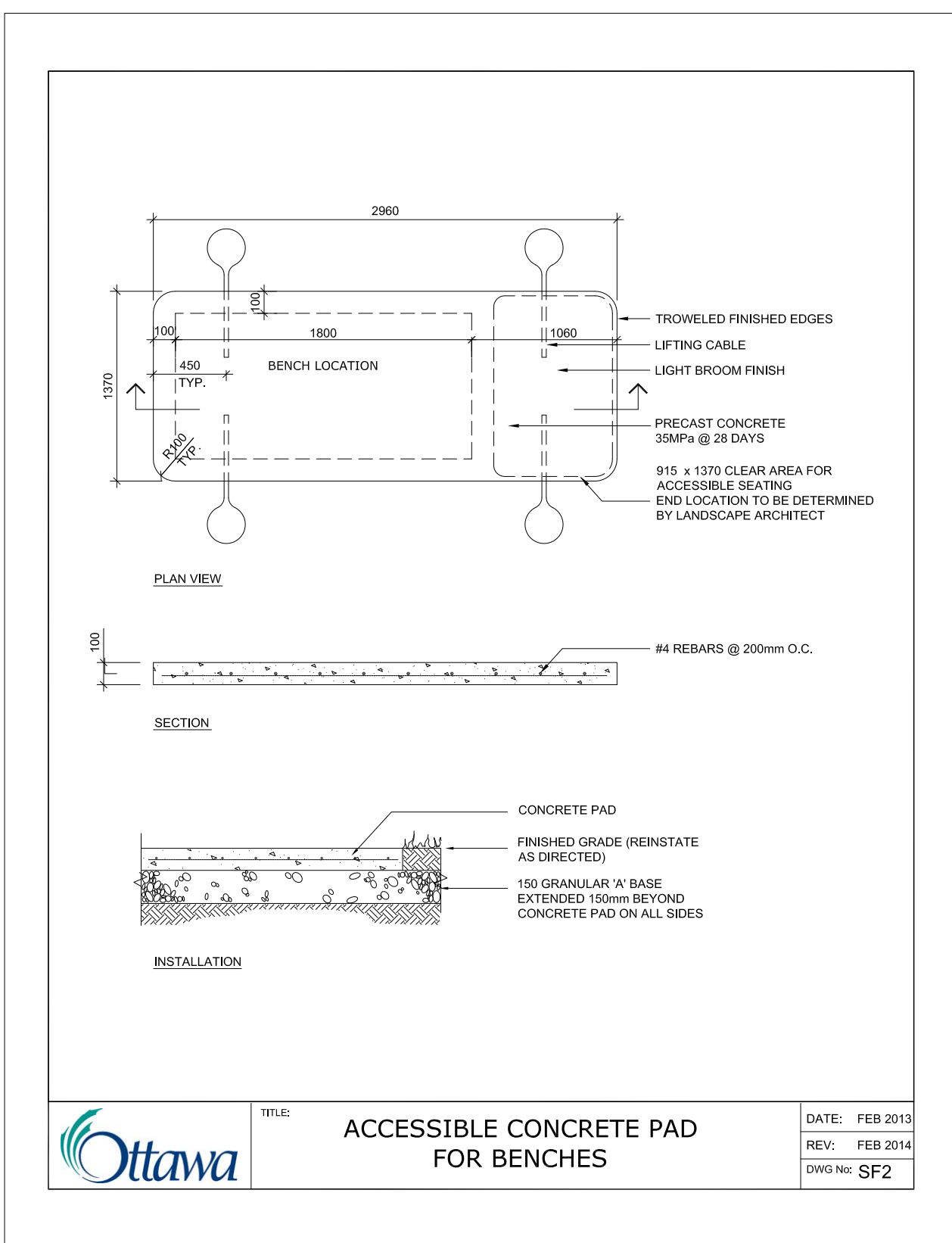
3 PERENNIAL AND ORNAMENTAL GRASS PLANTING
Scale: As Noted



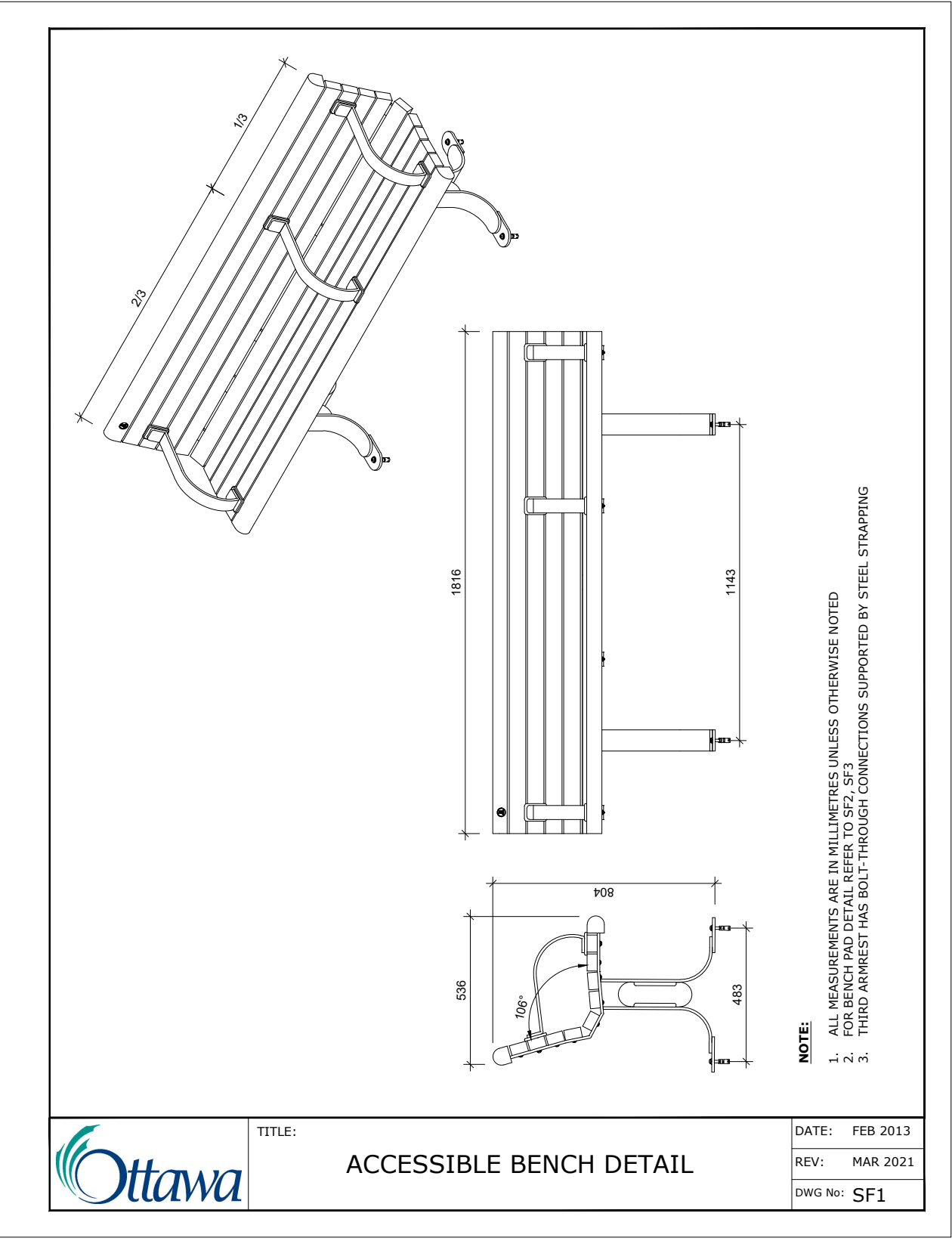
4 SHRUB BED PLANTING
Scale: As Noted



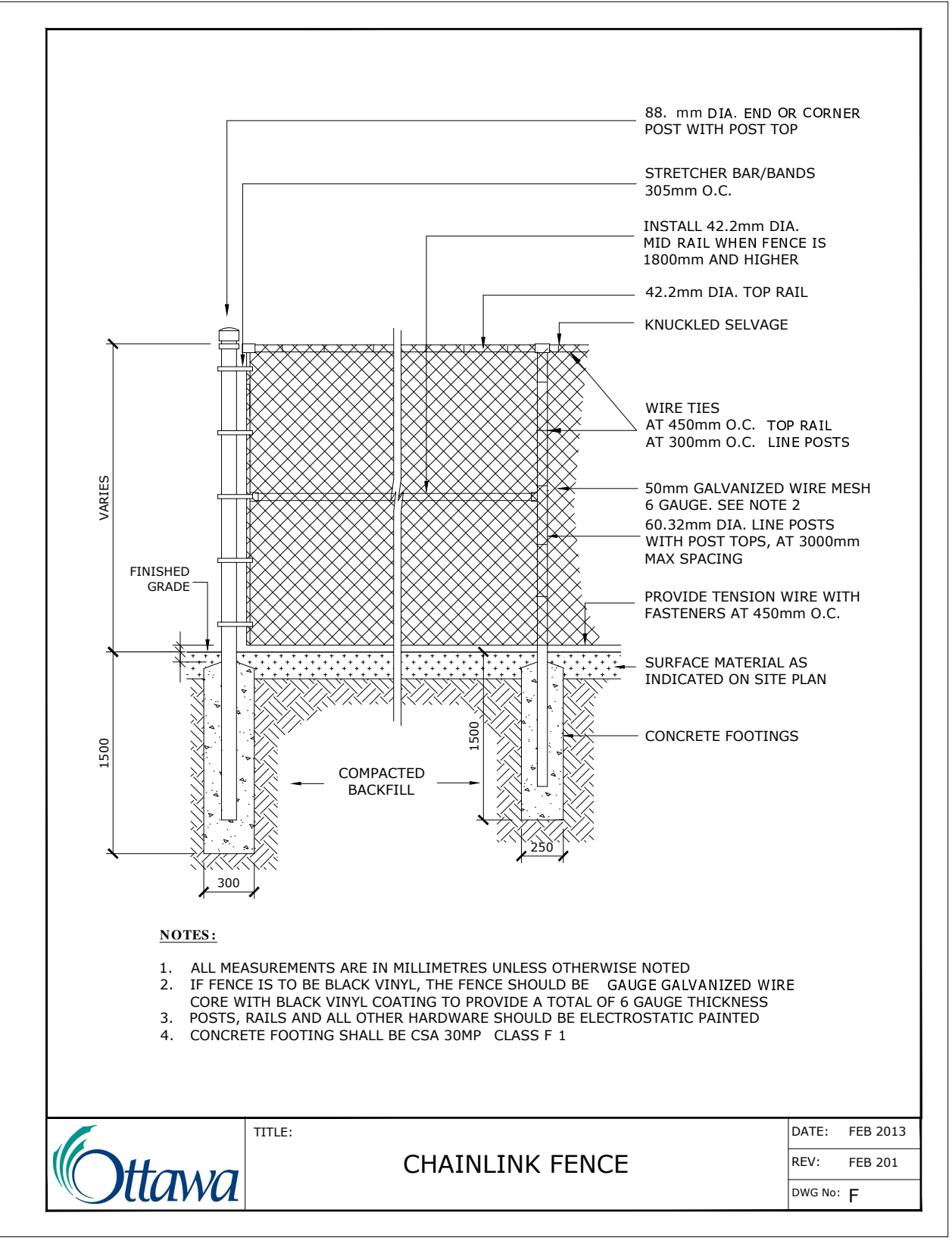
5 CONTINUOUS SHRUB BED PLANTING
Scale: As Noted



6 ACCESSIBLE CONCRETE PAD FOR BENCHES
Scale: As Noted



7 ACCESSIBLE BENCH DETAIL
Scale: As Noted



8 CHAINLINK FENCE
Scale: As Noted

6			
5			
4			
3			
2	SITE PLAN SUBMISSION	26/04/14	DL
1	ISSUED FOR 3% SUBMISSION	26/03/25	KJ

DESIGNED BY / CONCEPTEUR	DL/KJ	CHECKED BY / VÉRIFIÉ PAR	DL
DRAWN BY / DÉSSINEUR PAR	KJ	SCALE / ÉCHELLE	AS NOTED

DETAIL NUMBER	
1 A1.1	DRAWING TITLE
	SCALE:
	SHEET NUMBER

THIS DRAWING IS THE PROPERTY OF THE CITY OF OTTAWA AND ALL COPYRIGHT IS RESERVED. DIMENSIONS ON DRAWING ARE FOR ESTIMATING PURPOSES ONLY. IT IS THE RESPONSIBILITY OF EACH CONTRACTOR AND SUB-CONTRACTOR OR CONSULTANT TO CHECK AND VERIFY ALL DIMENSIONS AND CONDITIONS ON SITE. NOTIFY OWNER OF ANY ERRORS OR OMISSIONS PRIOR TO COMMENCING THE WORK. DO NOT SCALE THE DRAWINGS.

CE DESSIN CONSTITUE LA PROPRIÉTÉ DE LA VILLE D'OTTAWA ET TOUT DROIT D'AUTEUR EST RÉSERVÉ. LES DIMENSIONS UTILISÉES SUR LES DES D'ESTIMATION SEULEMENT. IL INCOMBE À CHAQUE ENTREPRENEUR, SOUS-CONTRACTANT OU CONSULTANT DE VÉRIFIER TOUTES LES DIMENSIONS ET LES CONDITIONS SUR LE CHANTIER. DE TOUTE ERREUR OU OMISSION AVANT D'ENTAMER LES TRAVAUX, NE DRESSÉZ PAS LES PLANS À L'ÉCHELLE.

ARCHITECT / ARCHITECTE	CONSULTANT / EXPERT-CONSEIL
CONSULTANT / EXPERT-CONSEIL	CONSULTANT / EXPERT-CONSEIL

PROJECT / LOCATION / PROJET / ENDROIT
ALEXANDER COMMUNITY CENTRE EXPANSION

950 Silver Street
OTTAWA, ONTARIO

DRAWING / DESSIN

DETAILS

BUSINESS ENTITY / NUMÉRO DE L'ENTITÉ	SHEET NO. / FEUILLE NO.
BUILDING NUMBER / NUMÉRO DU BÂTIMENT	
CITY PROJECT NO. / NUMÉRO DE PROJET	
CONS. PROJECT NO. / NUMÉRO DE PROJET	
CF001822	25907-1

GENERAL NOTES

1. ALL GENERAL SITE INFORMATION AND CONDITIONS COMPILED FROM ARCHITECTS, ENGINEERS, FORESTRY CONSULTANT PLANS, AND SURVEYS.
2. DO NOT SCALE THIS DRAWING.
3. REPORT ANY DISCREPANCIES PRIOR TO COMMENCING WORK. NO RESPONSIBILITY IS BORN BY THE LANDSCAPE ARCHITECT FOR UNKNOWN SUBSURFACE CONDITIONS.
4. REINSTATE ALL AREAS AND ITEMS DAMAGED AS A RESULT OF CONSTRUCTION ACTIVITIES TO THE SATISFACTION OF THE LANDSCAPE ARCHITECT.
5. DRAWINGS MAY NOT BE USED FOR CONSTRUCTION UNTIL SIGNED BY LANDSCAPE ARCHITECT AS ISSUED FOR CONSTRUCTION.
6. THE ACCURACY OF THE POSITION OF UTILITIES IS NOT GUARANTEED.
7. INDIVIDUAL UTILITY CO. MUST BE CONTACTED FOR CONFIRMATION OF UTILITY EXISTENCE AND LOCATION PRIOR TO DIGGING.
8. THIS DRAWING IS AN INSTRUMENT OF SERVICE AND REQUIRES THE PERMISSION OF THE LANDSCAPE ARCHITECT FOR USE. COPYRIGHT IS RESERVED BY THE LANDSCAPE ARCHITECT, DAVID M. LASHLEY.

6			
5			
4			
3			

2	SITE PLAN SUBMISSION	26/04/14	DL
1	ISSUED FOR 3% SUBMISSION	26/03/25	KJ

DESIGNED BY / CONCEVU PAR	DL/KJ	CHECKED BY / VERIFIE PAR	DL
---------------------------	-------	--------------------------	----

DRAWN BY / DESINE PAR	KJ	SCALE / ECHELLE	AS NOTED
-----------------------	----	-----------------	----------

DETAIL NUMBER	
1	DRAWING TITLE
A1.1	SCALE:
	SHEET NUMBER

THIS DRAWING IS THE PROPERTY OF THE CITY OF OTTAWA AND ALL COPYRIGHT IS RESERVED. DIMENSIONS ON DRAWING ARE FOR ESTIMATING PURPOSES ONLY. IT IS THE RESPONSIBILITY OF EACH CONTRACTOR AND SUB-CONTRACTOR OR CONSULTANT TO CHECK AND VERIFY ALL DIMENSIONS AND CONDITIONS ON SITE. NOTIFY OWNER OF ANY ERRORS OR OMISSIONS PRIOR TO COMMENCING THE WORK. DO NOT SCALE THE DRAWINGS.

CE DESSIN CONSTITUE LA PROPRIÉTÉ DE LA VILLE D'OTTAWA ET TOUT DROIT D'AUTEUR EST RÉSERVÉ. LES DIMENSIONS UTILISÉES LE SONT À DES FINS D'ESTIMATION SEULEMENT. IL INCOMBE À CHAQUE ENTREPRENEUR, SOUS-CONTRACTANT OU CONSULTANT DE VÉRIFIER TOUTES LES DIMENSIONS ET LES CONDITIONS SUR LE CHANTIER. VEUILLEZ INFORMER LE PROPRIÉTAIRE DE TOUTE ERREUR OU OMISSION AVANT D'ENTAMER LES TRAVAUX. NE DRESSEZ PAS LES PLANS À L'ÉCHELLE.

ARCHITECT / ARCHITECTE	CONSULTANT / EXPERT-CONSEIL

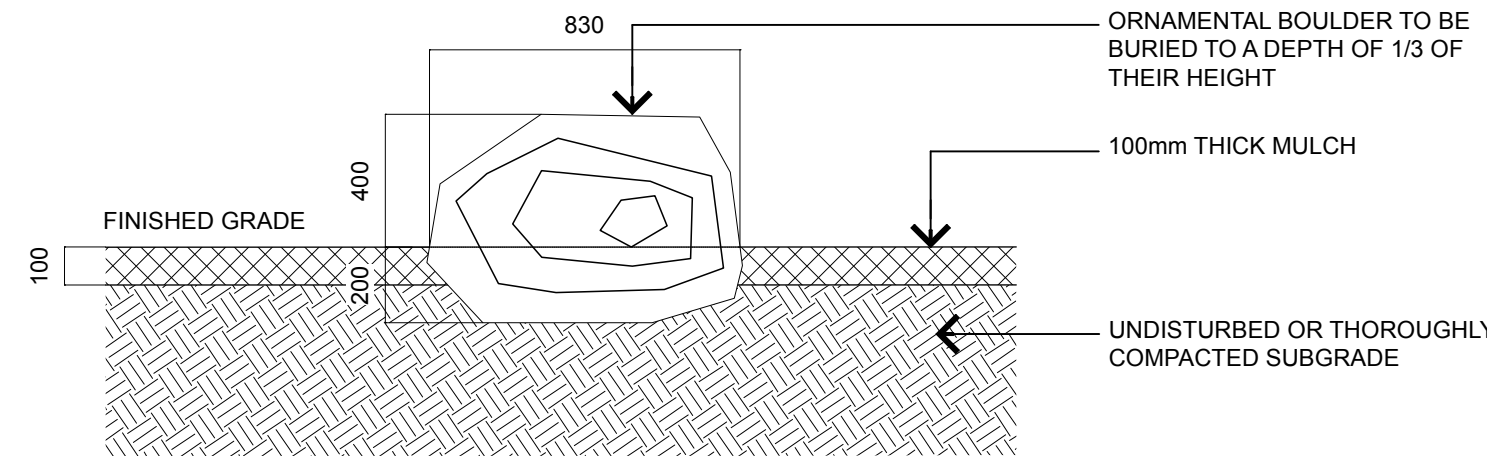
CONSULTANT / EXPERT-CONSEIL	CONSULTANT / EXPERT-CONSEIL

PROJECT / LOCATION / PROJET / ENDROIT
ALEXANDER COMMUNITY CENTRE EXPANSION
950 Silver Street
OTTAWA, ONTARIO

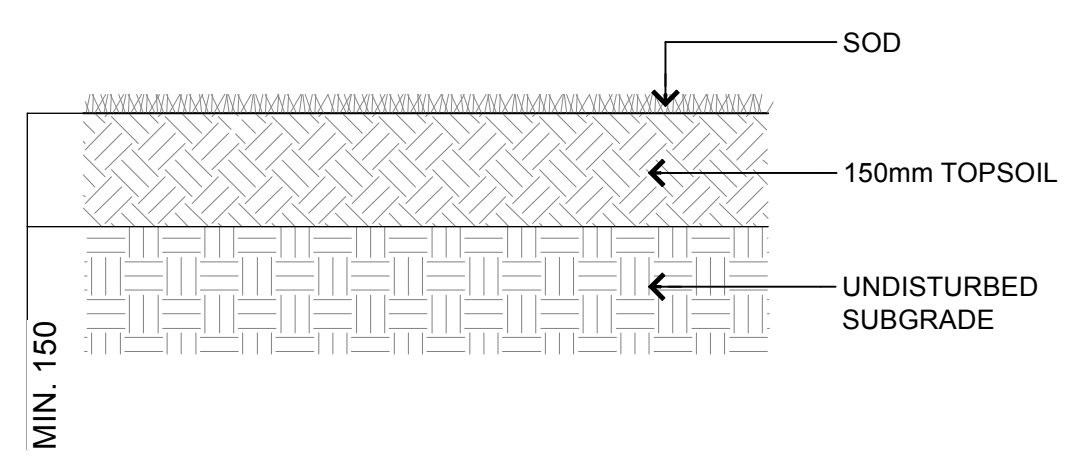
DRAWING / DESSIN
DETAILS

BUSINESS ENTITY / NUMÉRO DE L'ENTITÉ BUILDING NUMBER / NUMÉRO DU BÂTIMENT	SHEET NO. / FEUILLE NO.
CITY PROJECT NO. / NUMÉRO DE PROJET CF001822	CONS. PROJECT NO. / NUMÉRO DE PROJET 25907-1

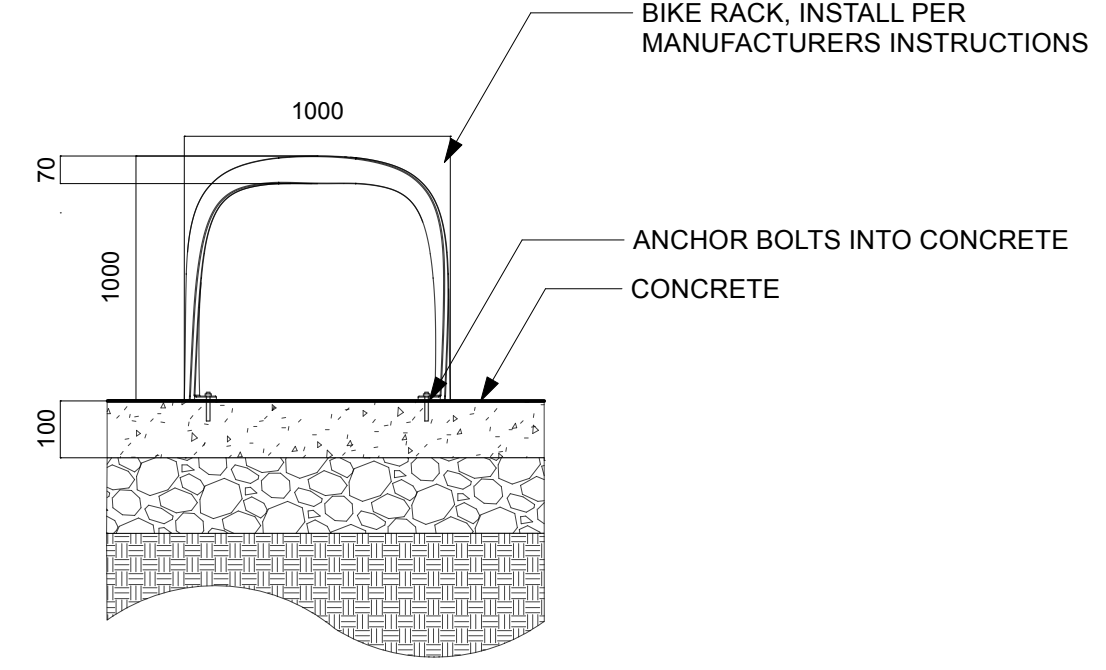
BOULDER SIZES (mm)			
	L	W	H
1	1500	740	500
2	830	626	700
3	1095	594	900
4	495	380	550
5	750	500	1100
6	900	650	600



1 LANDSCAPE BOULDERS
Scale: 1:20

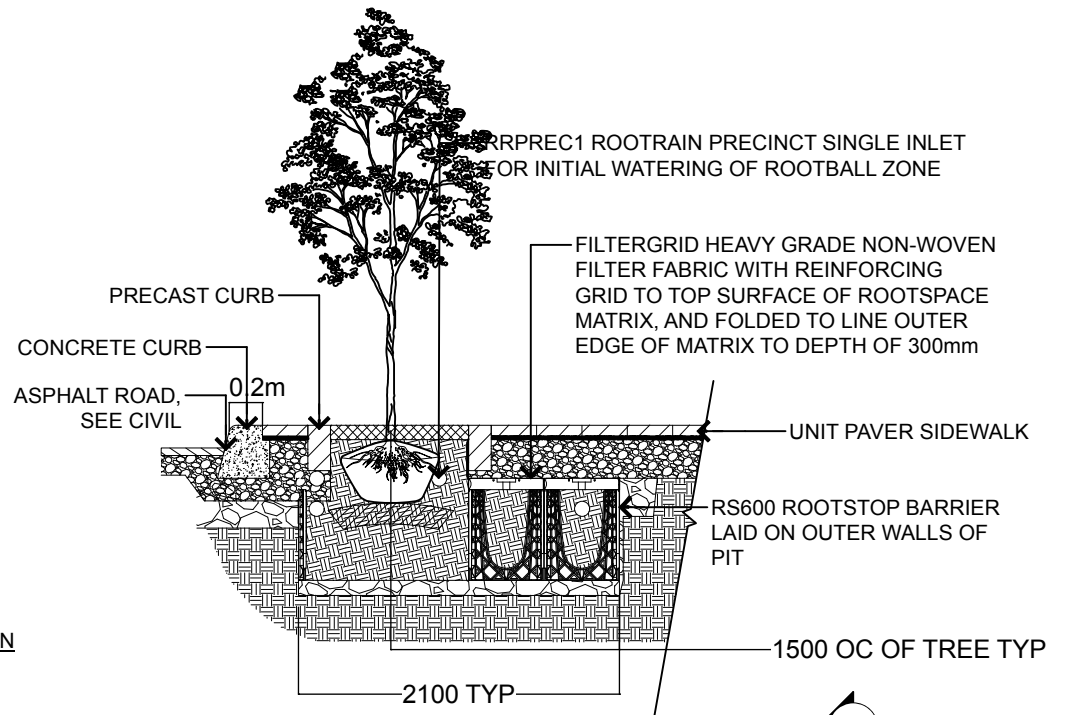


2 SOD PLANTING
Scale: 1:10

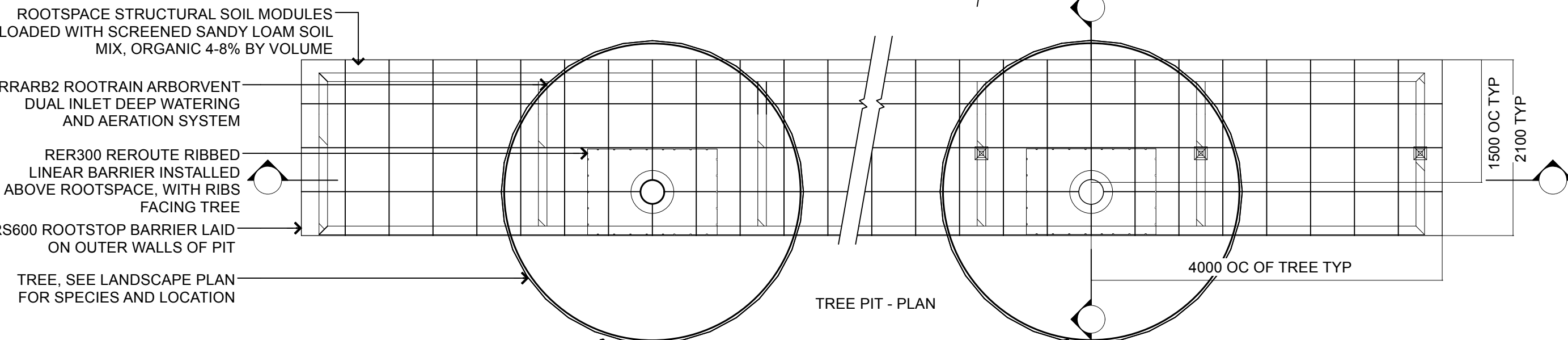


3 BIKE RACK
Scale: 1:20

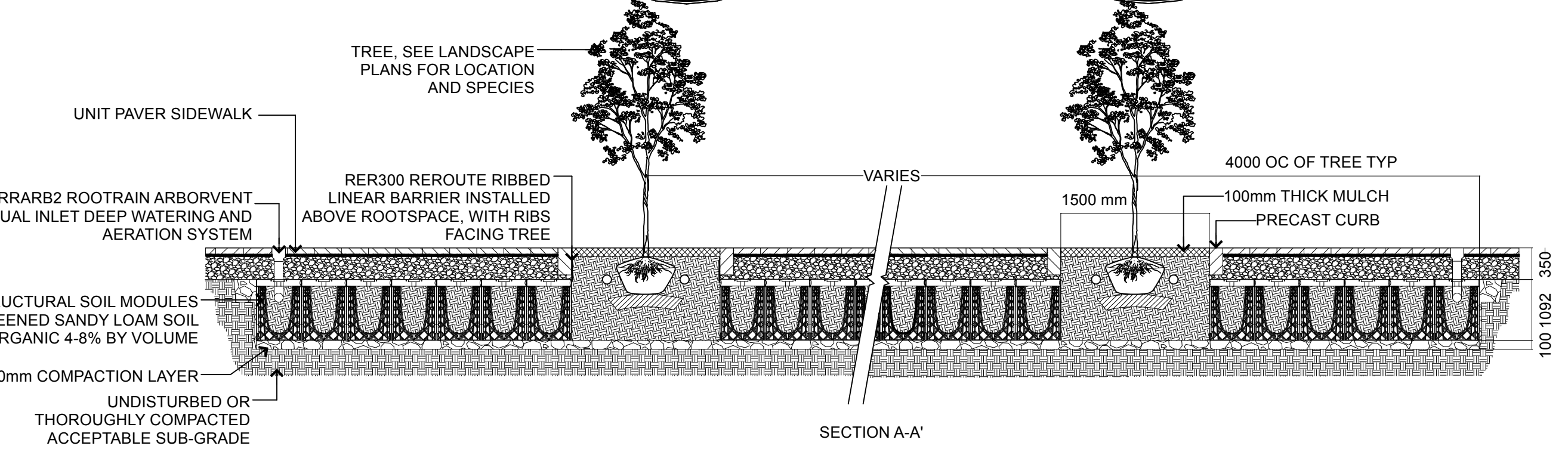
- INSTALLATION NOTES:**
1. ADD 5% TO OUTER PLAN DIMENSIONS WHEN EXCAVATING PIT.
 2. ALWAYS CHECK PIT DIMENSIONS AT BASE OF PIT, ENSURING SIDES ARE CLEAN AND SQUARE.
 3. LEVEL AND SCREED DRAINAGE LAYER PRIOR TO PLACEMENT OF CELLS.



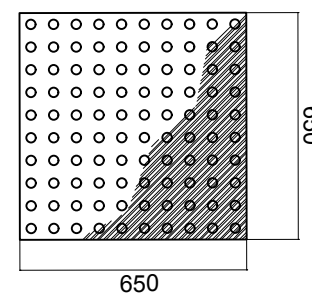
SECTION B-B



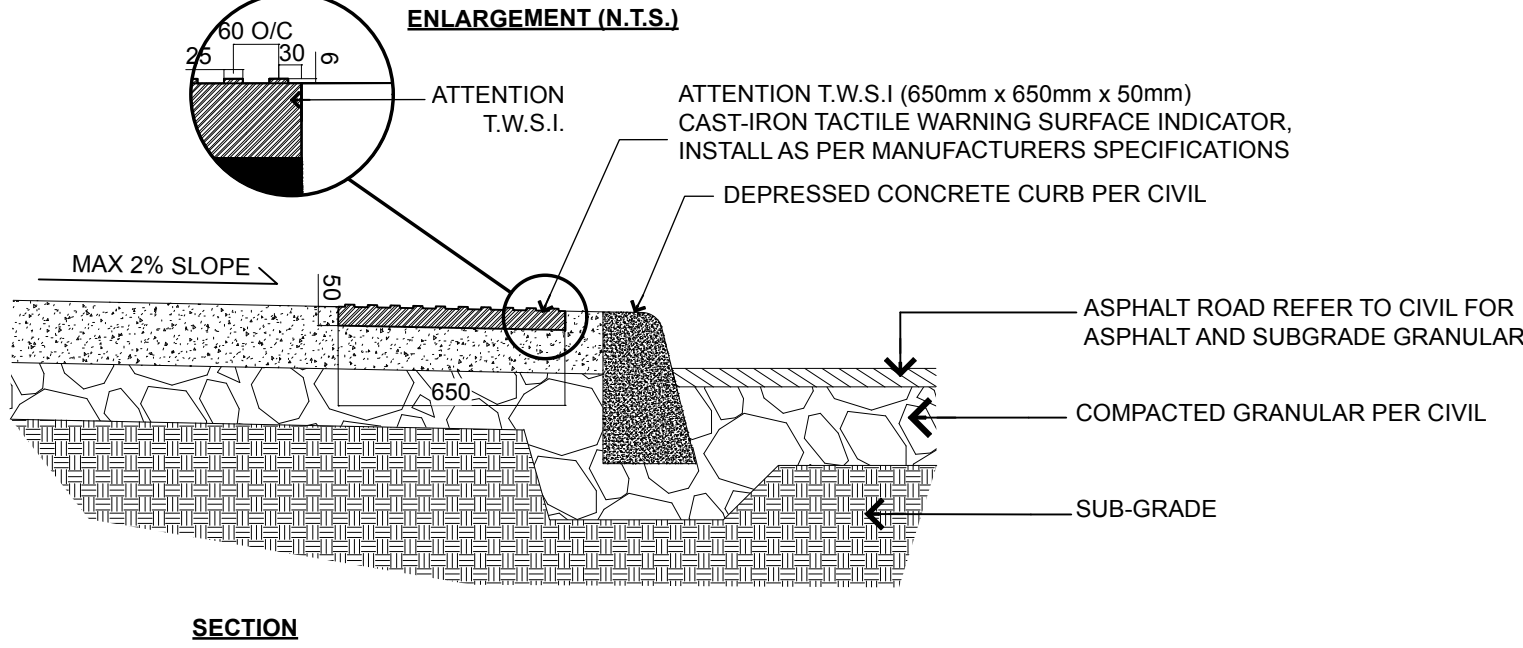
SECTION A-A'



SECTION A-A'



PLAN



SECTION

5 TACTILE WARNING INDICATOR
Scale: 1:20

4 SOIL CELLS
Scale: 1:50