

- ### LEGEND
- SITE PROPERTY LINE
  - MISC LEGAL LINE (EASEMENT, PROPERTY LINES) REFER TO LEGAL PLAN FOR DETAILS
  - PROPOSED SIDEWALK
  - PROPOSED CURB
  - DC PROPOSED DEPRESSED CURB
  - PROPOSED RETAINING WALL
  - CW RAILING
  - SWALE c/w SUBDRAIN AND DIRECTION OF FLOW
  - PROPOSED SANITARY SEWER & MANHOLE
  - PROPOSED STORM SEWER & MANHOLE
  - PROPOSED CATCHBASIN MANHOLE
  - PROPOSED CATCHBASIN
  - PROPOSED INLET CONTROL DEVICE
  - PROPOSED LANDSCAPE DRAIN
  - PROPOSED WATER MAIN
  - PROPOSED HYDRANT c/w LEAD & VALVE
  - PROPOSED BEND AND THRUSTBLOCK 11.25', 22.5', 45' or TEE
  - PROPOSED CURB STOP
  - PROPOSED VALVE AND VALVE BOX
  - PROPOSED TOP OF BOTTOM FLANGE
  - DMA CHAMBER
  - PROPOSED BUILDING SERVICES
    - 100mm STORM SERVICE
    - 135mm SAN SERVICE
    - 38mm WATER SERVICE
  - PROPOSED PIPE CROSSING REFER TO 125113-ND FOR DETAILS
  - PROPOSED SEWER AND PIPE INSULATION PER S35
  - PROPOSED TRANSFORMER WITH BOLLARDS
  - PROPOSED LIGHTING (REFER TO ELECTRICAL PLANS FOR DETAILS)
  - PROPOSED BIKE RACK

ICD SIZING AND FLOWS						
STRUCTURE	ORIFICE ICD SIZE	ICD INVERT (m)	T/G (m)	100-yr HGL (m)	100-yr HEAD (m)	100-yr RELEASE RATE (L/s)
CB 01	94mm PLATE	85.35	87.15	87.37	1.97	27.00
CB 02	108mm PLATE	85.60	87.10	87.36	1.70	32.75
CB 03	102mm PLATE	85.67	87.17	87.36	1.64	29.00
CB 04	LMF 105	85.55	87.05	87.17	1.52	12.00
CB 06	83mm PLATE	85.63	87.13	87.24	1.57	18.50
CBM07	94mm PLATE	85.63	87.55	87.43	1.75	25.00

SANITARY MANHOLES THAT REQUIRE WATER TIGHT LIDS (PER OPSD 401.030)		STORM MANHOLES THAT REQUIRE WATER TIGHT LIDS (PER OPSD 401.030)	
MANHOLE ID		MANHOLE ID	
204		103	
		105	

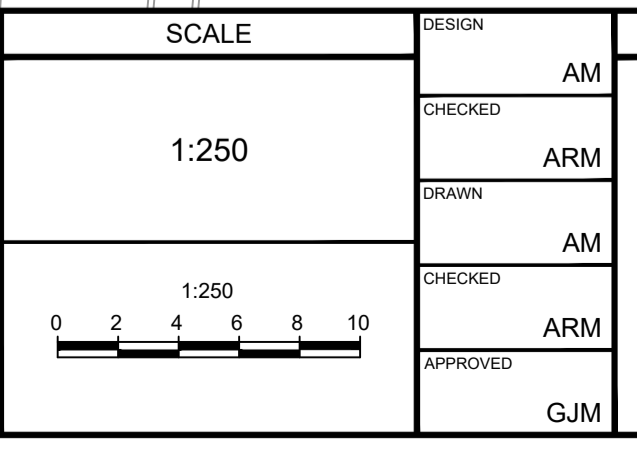
- NOTE:
- ALL SERVICE CONNECTIONS AND CATCHBASIN CONNECTIONS TO BE MADE PER CITY OF OTTAWA DETAIL S1, S11 AND S11.2
  - BACKWATER VALVES TO BE PROVIDED ON ALL STORM AND SANITARY LATERALS AS PER CITY OF OTTAWA DETAILS S14, S14.1, AND S14.2. DOWNSTREAM OF ANY GRAVITY OUTLET FROM THE BUILDING. REFER TO MECHANICAL PLANS FOR DETAIL
  - REFER TO MECHANICAL DRAWINGS FOR FURTHER DETAILS ON INTERNAL PLUMBING (TYP).

REFER TO 125113-ND1 FOR ADDITIONAL NOTES & DETAILS

NOTE:  
THE POSITION OF ALL POLE LINES, CONDUITS, WATERMANS, SEWERS AND OTHER UNDERGROUND AND OVERGROUND UTILITIES AND STRUCTURES IS NOT NECESSARILY SHOWN ON THE CONTRACT DRAWINGS, AND WHERE SHOWN, THE ACCURACY OF THE POSITION OF SUCH UTILITIES AND STRUCTURES IS NOT GUARANTEED. BEFORE STARTING WORK, DETERMINE THE EXACT LOCATION OF ALL SUCH UTILITIES AND STRUCTURES AND ASSUME ALL LIABILITY FOR DAMAGE TO THEM.

**NOT FOR CONSTRUCTION**

No.	REVISION	DATE	BY
1.	ISSUED FOR SPA	APRIL 08/2026	ARM



DESIGN AM  
CHECKED ARM  
DRAWN AM  
CHECKED ARM  
APPROVED ARM

**FOR REVIEW ONLY**

**NOVATECH**  
Engineers, Planners & Landscape Architects  
Suite 200, 240 Michael Cowpland Drive  
Ottawa, Ontario, Canada K2M 1P6  
Telephone (613) 254-9643  
Facsimile (613) 254-5867  
Website www.novatech-eng.com

LOCATION  
1100 SPOOR STREET, CITY OF OTTAWA  
COPPERWOOD ESTATES (BLOCK 73)

DRAWING NAME  
**GENERAL PLAN OF SERVICES**

PROJECT No. 125113  
REV #1  
DRAWING No. 125113-GP

M:\2025\125113\CADD\CADD\125113-GP.dwg, GP, Mar 27, 2026 - 9:58am, amestwarp