

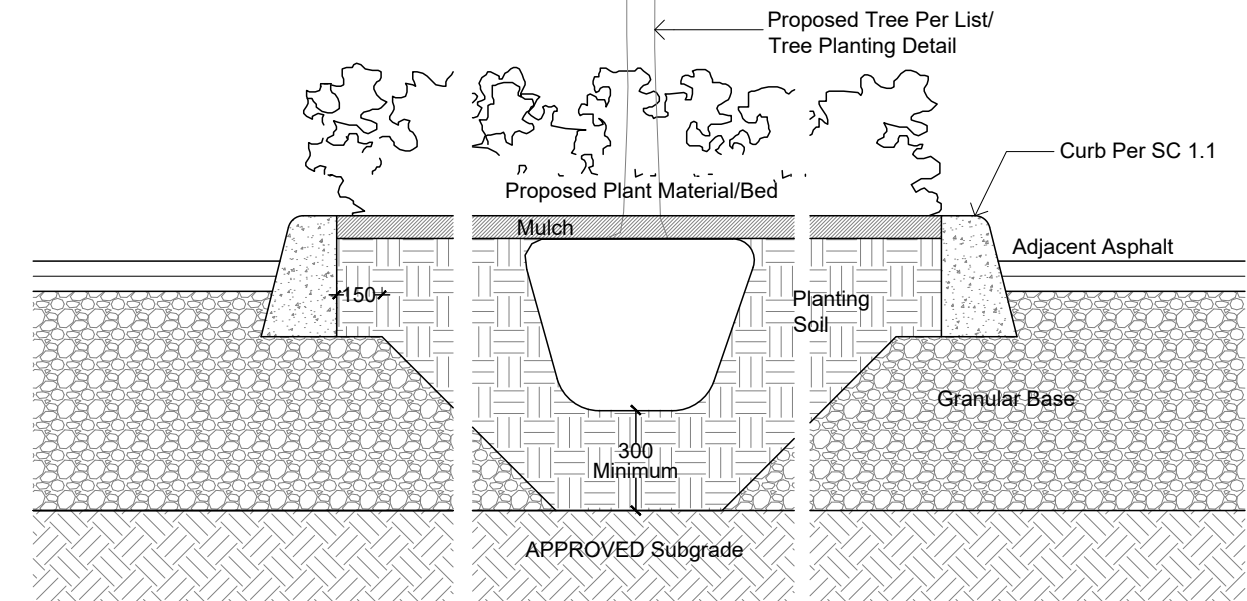
Tool Back Edge First, Apply Finish Then Tool Curb Edge with 50mm Curb Tool

Back Edge of Sidewalk

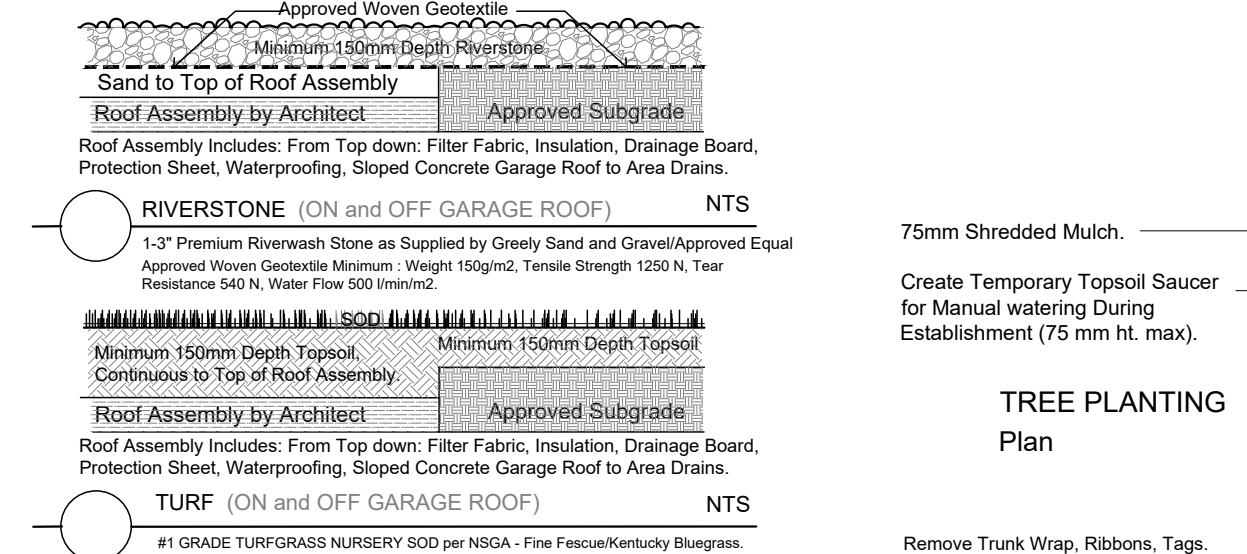
Face of Curb

Typical Curb Dimensions / Profile per City of Ottawa. SC 2/OPSD.600.110

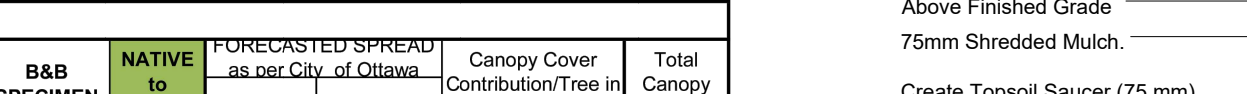
PLAN
NO Dummy Joints/Visible Tool Edges Except for Curb Edge



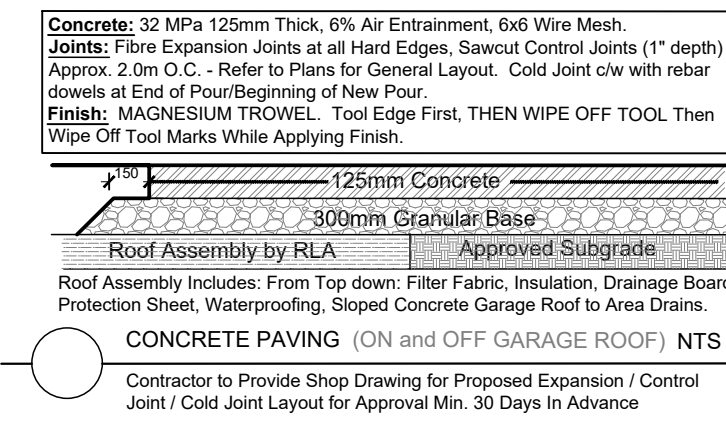
PLANTING IN ISLAND SECTION - TYPICAL



RIVERSTONE (ON and OFF GARAGE ROOF)



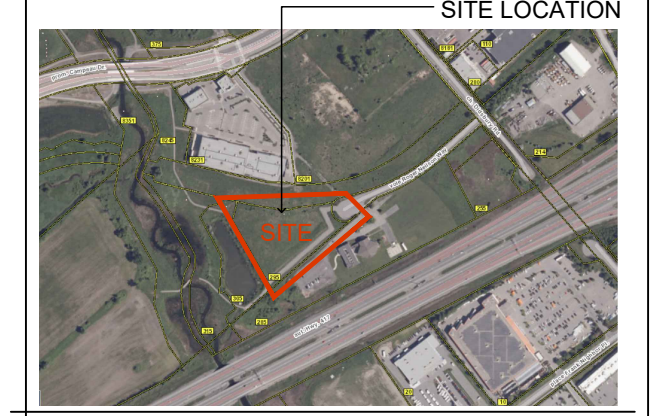
TURF (ON and OFF GARAGE ROOF)



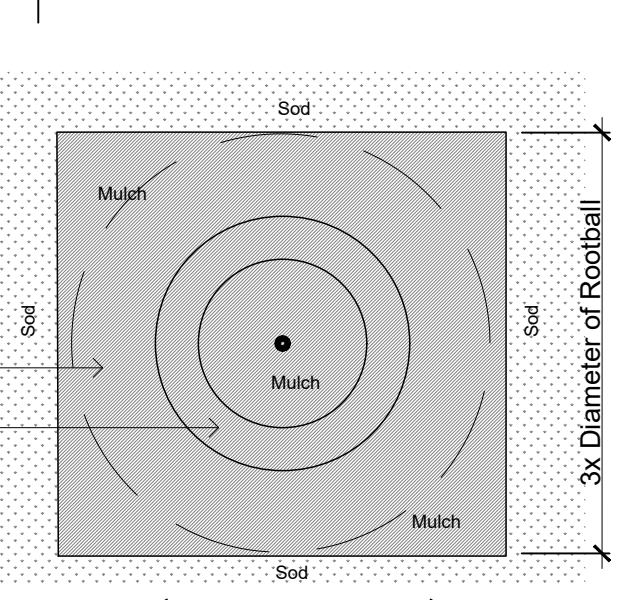
CONCRETE PAVING (ON and OFF GARAGE ROOF)

SURVEY SOURCE
TOPOGRAPHIC PLAN OF SURVEY OF
BLOCK 3
REGISTERED PLAN 4M-1540
CITY OF OTTAWA
Surveyed by Annis, O'Sullivan, Vollebek Ltd.

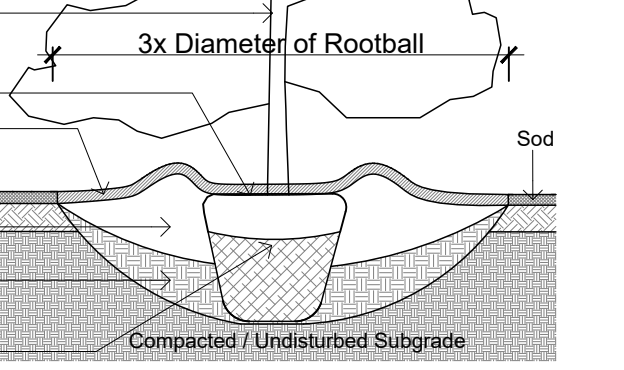
Drawing Remains the Property of Copyright Reserved by GJA INC. Do Not Use or Reproduce Without Approval of Gino J. Aiello.
| PLANTING MIX TO BE APPROVED BY LANDSCAPE ARCHITECT | PLANT MATERIAL TO MEET CNLA STANDARDS/BE APPROVED BY LANDSCAPE ARCHITECT PRIOR TO PLANTING ALL MATERIALS & WORK TO BE MAINTAINED UNTIL FINAL ACCEPTANCE. INCLUDE 1 YEAR WARRANTY FROM DATE OF FINAL ACCEPTANCE | REFER TO CIVIL ENGINEER'S DRAWING FOR ELEVATIONS / GRADING |
The Landscape Plan is to be read in conjunction with the grading, servicing, site and survey plan. All trees to be preserved on or directly adjacent to the site will be protected | Plant material are to be installed a minimum of 3.0m away from any part of any hydro transformer, 3.0m corridor between a fire hydrant and the curb, a 2.5m radius beside or behind a fire hydrant, 2.0m from any servicing/utility line or structure |



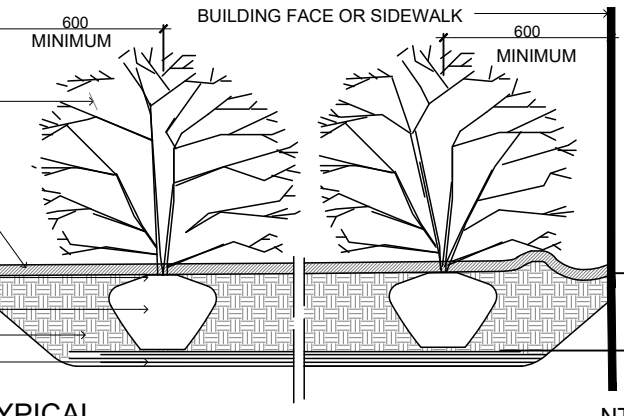
CONSULTANTS
SURVEY: ADV LIMITED
ARCHITECT: DEMLING Architecture & Interior Design
Landscape Architect: GJA INC.



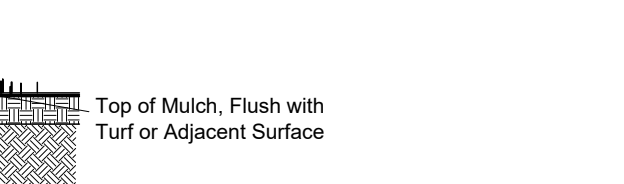
TREE PLANTING Plan



TREE PLANTING TYPICAL Section



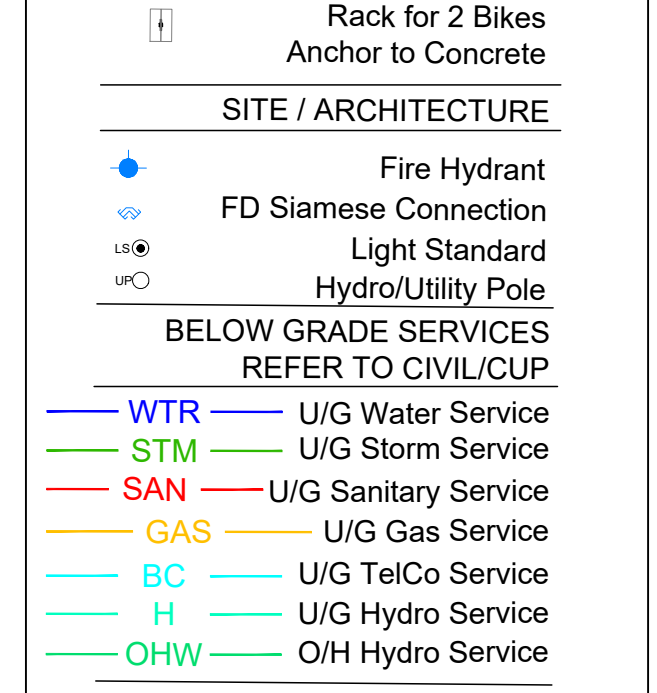
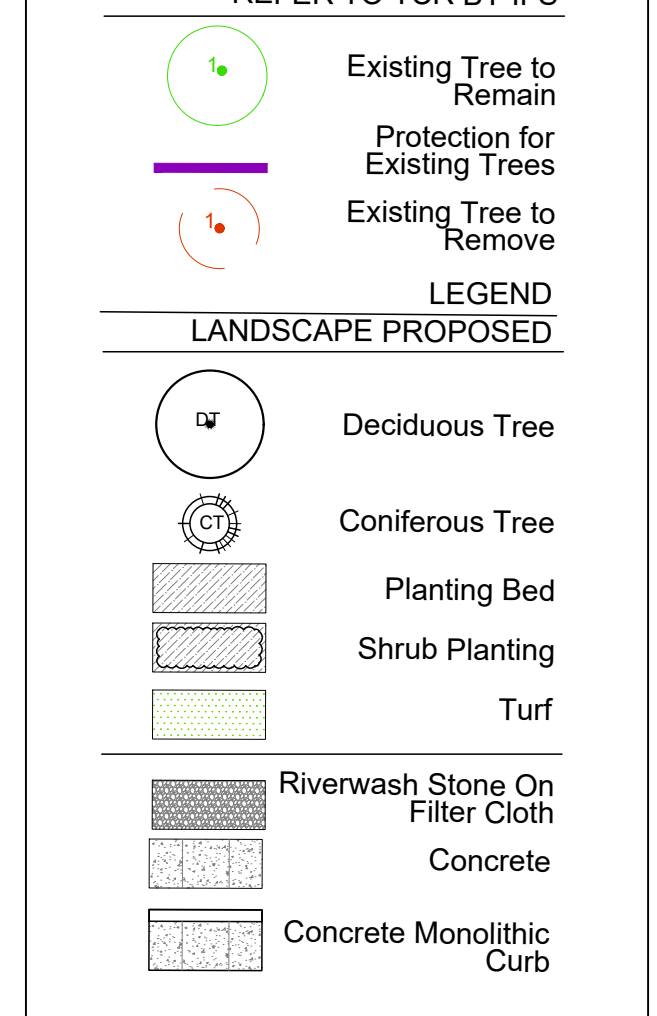
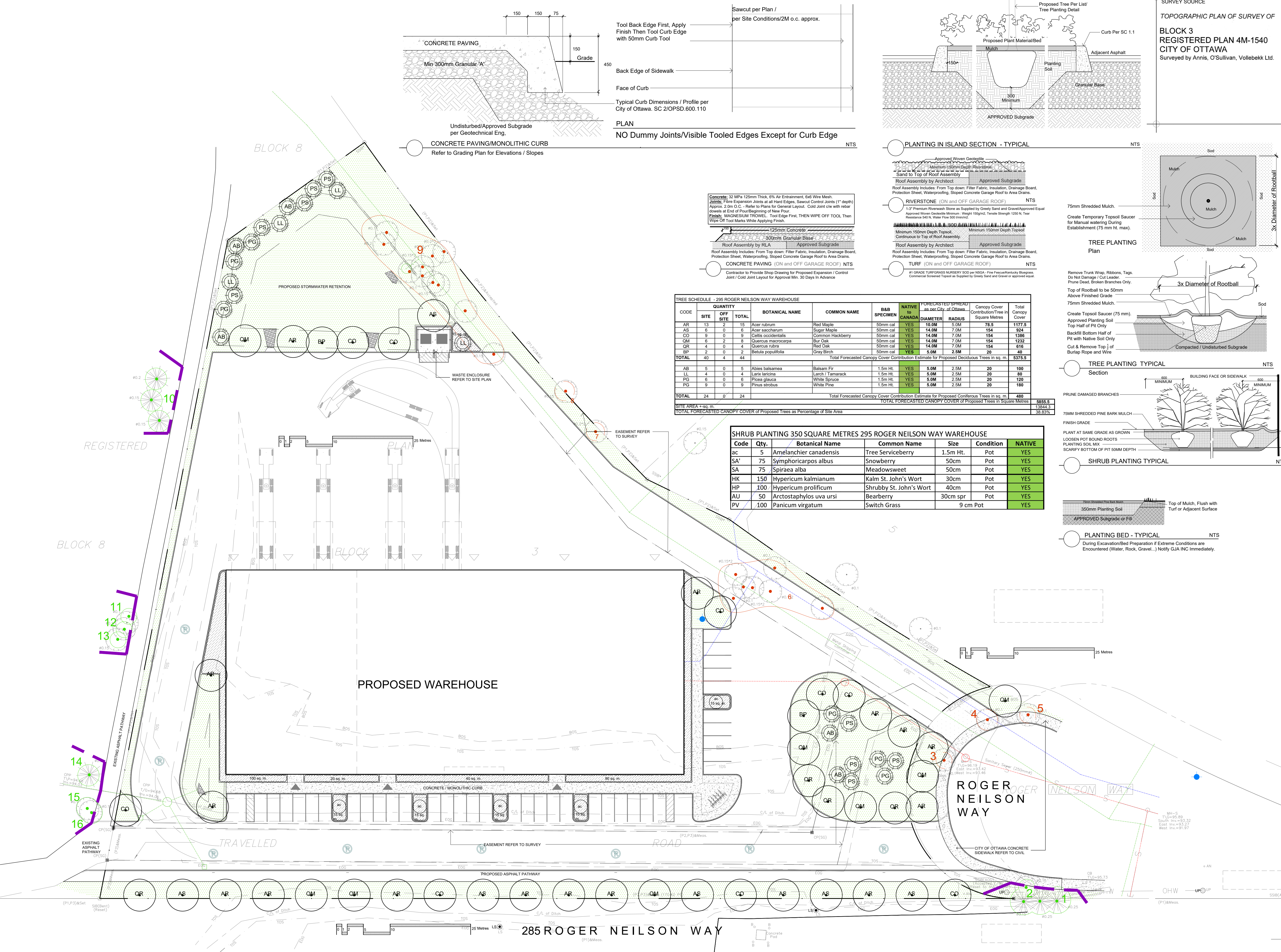
SHRUB PLANTING TYPICAL Section



PLANTING BED - TYPICAL Section

TREE SCHEDULE - 295 ROGER NEILSON WAY WAREHOUSE											
CODE	SITE	OFF SITE	TOTAL	BOTANICAL NAME	COMMON NAME	B&B SPECIMEN	NATIVE TO CANADA	DIAMETER	RADIUS	FORECASTED SPREAD as per City of Ottawa	TOTAL CANOPY COVER
AR	13	2	15	Acer rubrum	Red Maple	50mm cal	YES	10.0M	5.0M	78.5	1177.5
AS	6	0	6	Acer saccharum	Sugar Maple	50mm cal	YES	14.0M	7.0M	154	924
CO	9	0	9	Celtis occidentalis	Common Hackberry	50mm cal	YES	14.0M	7.0M	154	1386
QM	6	2	8	Quercus macrocarpa	Bur Oak	50mm cal	YES	14.0M	7.0M	154	1232
QR	4	0	4	Quercus rubra	Red Oak	50mm cal	YES	14.0M	7.0M	154	616
BP	2	0	2	Betula populifolia	Gray Birch	50mm cal	YES	5.0M	2.5M	20	40
TOTAL	40	4	44	Total Forecasted Canopy Cover Contribution Estimate for Proposed Deciduous Trees in sq. m.							5376.5
AB	5	0	5	Abies balsamea	Balsam Fir	1.5m HL	YES	5.0M	2.5M	20	100
LL	4	0	4	Larix laricina	Larch / Tamarack	1.5m HL	YES	5.0M	2.5M	20	80
PG	6	0	6	Pinus glauca	White Spruce	1.5m HL	YES	5.0M	2.5M	20	120
PG	9	0	9	Pinus strobus	White Pine	1.5m HL	YES	5.0M	2.5M	20	180
TOTAL	24	0	24	Total Forecasted Canopy Cover Contribution Estimate for Proposed Coniferous Trees in sq. m.							480
TOTAL FORECASTED CANOPY COVER OF Proposed Trees in Square Metres										5856.5	
SITE AREA +sq. m.										13544.3	
TOTAL FORECASTED CANOPY COVER OF Proposed Trees as Percentage of Site Area										38.83%	

SHRUB PLANTING 350 SQUARE METRES 295 ROGER NEILSON WAY WAREHOUSE						
Code	Qty.	Botanical Name	Common Name	Size	Condition	NATIVE
ac	5	Amelanchier canadensis	Tree Serviceberry	1.5m Ht.	Pot	YES
SA'	75	Symphoricarpos albus	Snowberry	50cm	Pot	YES
SA	75	Spiraea alba	Meadowsweet	50cm	Pot	YES
HK	150	Hypericum kalmianum	Kalm St. John's Wort	30cm	Pot	YES
HP	100	Hypericum prolificum	Shrubby St. John's Wort	40cm	Pot	YES
AU	50	Arctostaphylos uva ursi	Bearberry	30cm spr	Pot	YES
PV	100	Panicum virgatum	Switch Grass	9 cm Pot		YES



1 SPC SUBMISSION 2026 03 10
0 REVIEW/COORDINATION 2025 11 00
Revision/Coordination Date
PROPERTY OWNER
1850591 ONTARIO LTD.
C/O Pat Hunter, 3087 Applehill Drive Ottawa, K1T 3Z2

GJA INC.
GINO J. AIELLO | LANDSCAPE ARCHITECT
GJAL.COM | 613 286 5130 | GINO@GJAL.COM
115 DEBARY ROAD UNIT # 1 | OTTAWA ONTARIO | K1T 5C2
WAREHOUSE
295 ROGER NEILSON WAY KANATA
Landscape Plan
L1
Scale: 1:300