

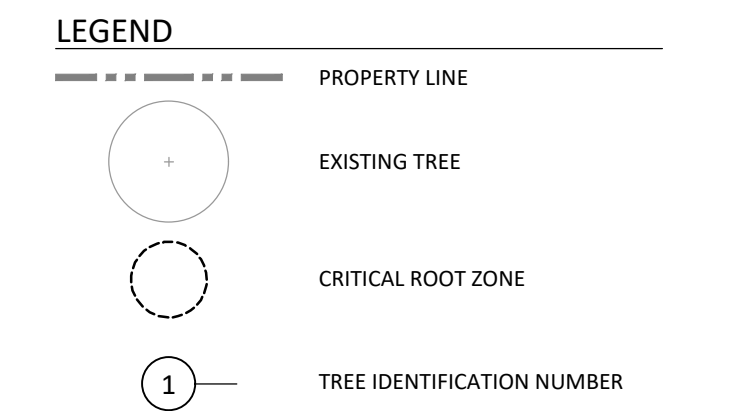
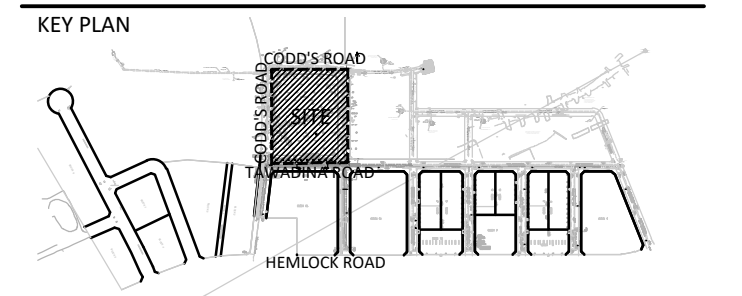


1 MAP #1 - CURRENT VEGETATION
1:300

SITE DESCRIPTION:

1. ALL EXISTING SITE INFORMATION AS PER SITE SURVEY PLAN DATED OCTOBER 27, 2025 AND PREPARED BY MONUMENT-URSO SURVEYING LTD.
5. THE EXISTING SITE IS CLEARED OF ALL VEGETATION AND CONTAINS STOCKPILES OF EXCAVATED MATERIAL AND TOPSOIL.
6. PRE-EXISTING VEGETATION AND ENVIRONMENTAL CONDITIONS AS SHOWN ON AERIAL (OBTAINED FROM geoOTTAWA, DATED 2022) ARE REFERENCED IN THE 'WATERIDGE VILLAGE PHASES 6 & 7 ENVIRONMENTAL IMPACT STATEMENT AND TREE CONSERVATION REPORT' AS PREPARED BY ARCADIS, PROJECT ID #139653, DECEMBER 2024.
4. AERIAL PHOTO PRE-DATES EXISTING TREES SHOWN ON TCR.
5. THERE ARE A TOTAL OF TEN TREES INCLUDED IN THE TREE CONSERVATION REPORT. ALL TREES ARE LOCATED WITHIN THE CITY RIGHT-OF-WAY.

Contractor shall check all dimensions on the work and report any discrepancy to the Landscape Architect before proceeding. All drawings and specifications are the property of the Landscape Architect and must be returned at the completion of the work. This drawing is not to be used for construction until signed by the Landscape Architect.



No.	Description	Date
1	Issued for Site Plan Control Application	26-03-26

OWNER/APPLICANT
WATERIDGE LIFESTYLE LTD.
1505 Carling Avenue, Ottawa ON K1Z 7L9

SURVEYOR
MONUMENT-URSO SURVEYING LTD.
1755 Woodward Drive, #200, Ottawa ON K2C 0P9

ARCHITECT
T BOHRDAMME ARCHITECT
3541 R2S Cove Road, Portland ON K0G 3V0

GEOTECH ENGINEER
CAMULUM CONSULTING & ENGINEERING
33 Superior Court, # 202, Kingston ON K7K 7G3

CIVIL
ROBINSON LAND DEVELOPMENT
2936 Baseline Road, Ottawa ON K7X 7G3

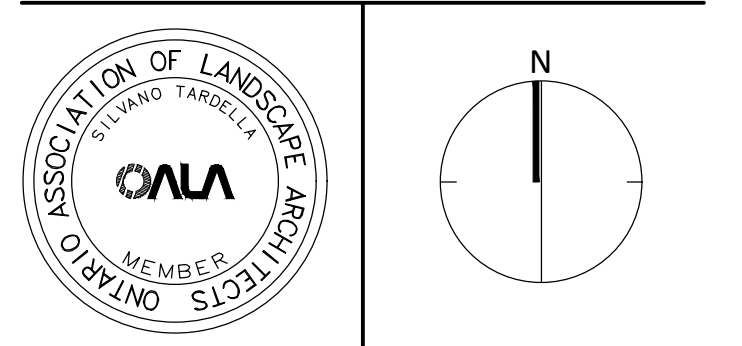
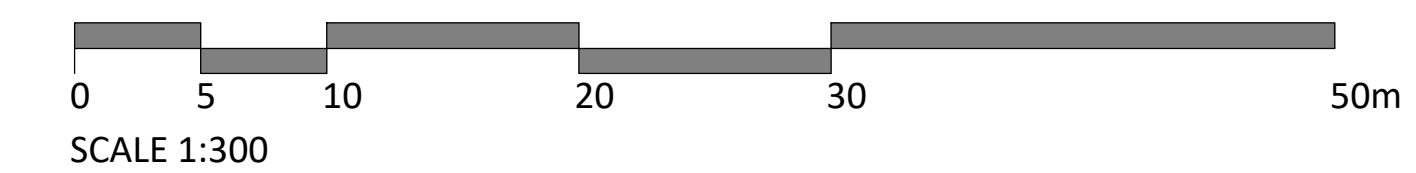
STRUCTURAL ENGINEER
E+M STRUCTURAL LTD.
333 Preston Street, #110, Ottawa ON K3S 5N4

LANDSCAPE ARCHITECT
NAK DESIGN STRATEGIES
1285 Wellington St., Ottawa ON K1Y 3A8

MECHANICAL & ELECTRICAL
GOODER, WEDMARE & ASSOCIATES LTD.
1888 Woodward Drive, Ottawa ON K2C 3R8

ARBORIST:
ISA CERTIFICATION NUMBER: PAT GAUVREAU
ON-3138A

TREE #	BOTANICAL NAME	COMMON NAME	DBH (cm)	OWNERSHIP	CONDITION	NOTES	TO BE PRESERVED	REASON FOR REMOVAL
1	Quercus palustris	Pin Oak	3.80	Public - ROW	GOOD	Symmetrical canopy, Single Stem	YES	
2	Quercus palustris	Pin Oak	3.80	Public - ROW	GOOD	Symmetrical canopy, Single Stem	YES	
3	Catalpa speciosa	Northern Catalpa	3.18	Public - ROW	GOOD	Symmetrical canopy, Single Stem	YES	
4	Catalpa speciosa	Northern Catalpa	3.18	Public - ROW	GOOD	Symmetrical canopy, Single Stem	NO	Conflicts with proposed development
5	Acer rubrum	Red Maple	5.08	Public - ROW	GOOD	Symmetrical canopy, Single Stem	YES	
6	Acer rubrum	Red Maple	5.08	Public - ROW	GOOD	Symmetrical canopy, Single Stem	YES	
7	Catalpa speciosa	Northern Catalpa	3.80	Public - ROW	GOOD	Symmetrical canopy, Single Stem	NO	Conflicts with proposed development
8	Catalpa speciosa	Northern Catalpa	3.80	Public - ROW	GOOD	Symmetrical canopy, Single Stem	NO	Conflicts with proposed development
9	Quercus palustris	Pin Oak	3.80	Public - ROW	GOOD	Symmetrical canopy, Single Stem	YES	
10	Quercus palustris	Pin Oak	3.80	Public - ROW	GOOD	Symmetrical canopy, Single Stem	YES	



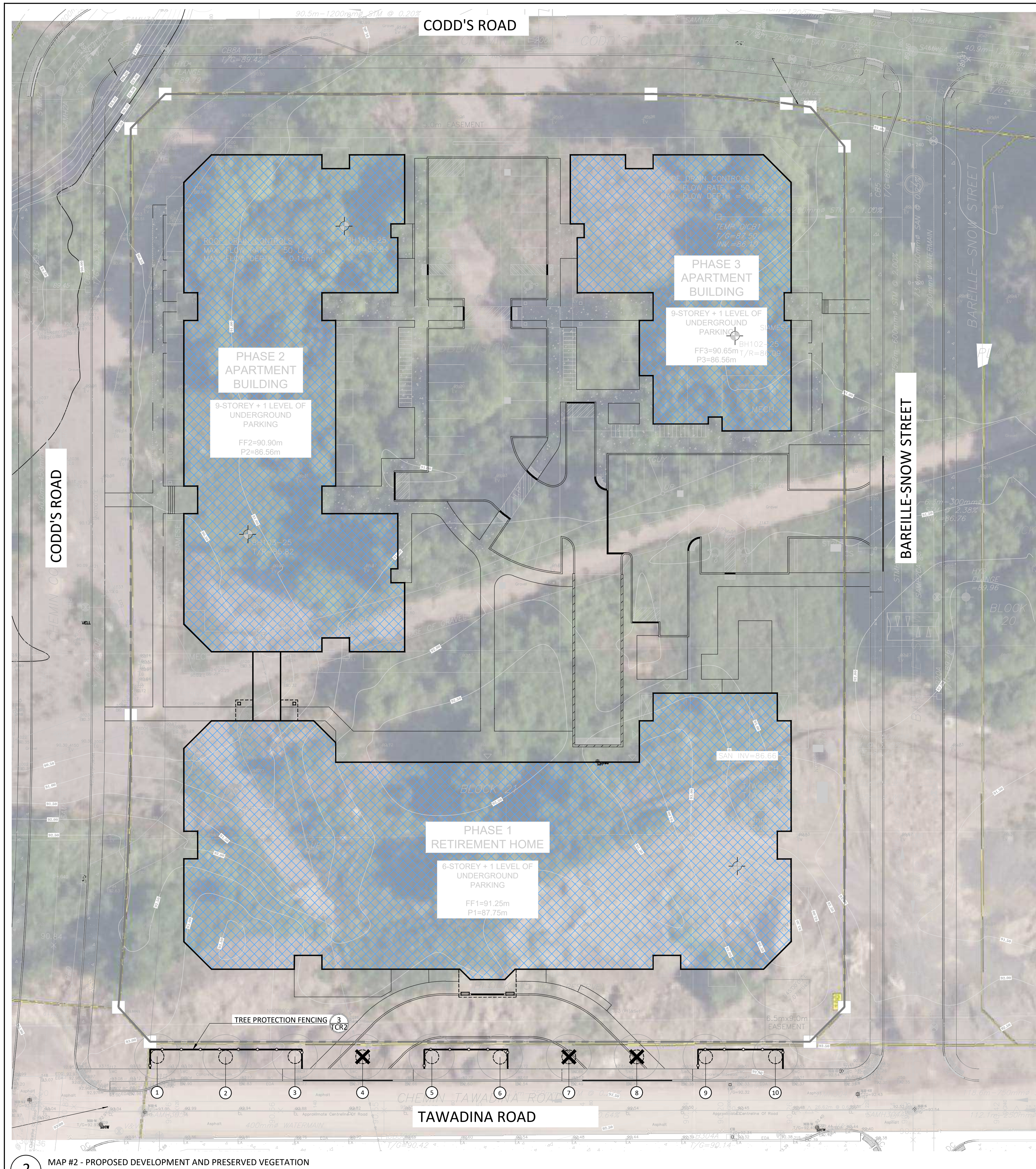
NAK
design strategies

1285 WELLINGTON STREET, OTTAWA, ON K1Y 3A8 CANADA
T 613.237.2345 NAKDESIGNSTRATEGIES.COM

WATERIDGE LIFESTYLES - PHASE 1 RETIREMENT HOME
Block 21 Wateridge Village
200 Codd's Road, Ottawa ON K1K 5C6

Title
TREE CONSERVATION REPORT

Date 2026-03-26 Sheet
Scale 1:300
Drawn JE
Checked MK
Job No. 25-360
TCR 01



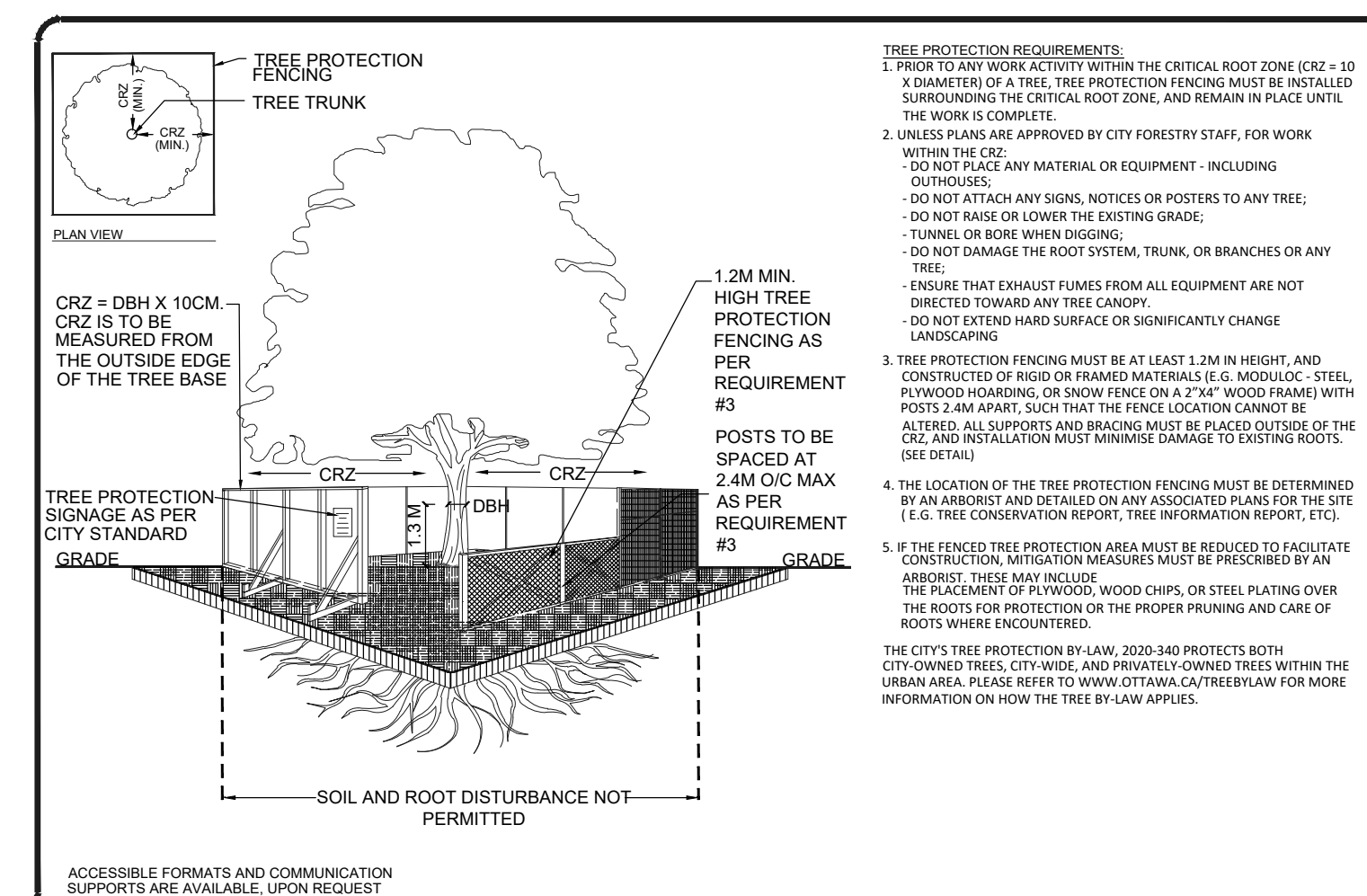
2 MAP #2 - PROPOSED DEVELOPMENT AND PRESERVED VEGETATION
1:300

TREE PRESERVATION / REMOVAL NOTES:

- TREES IDENTIFIED FOR RETENTION ARE IN GOOD CONDITION AND CAN BE REASONABLY PROTECTED FROM CONSTRUCTION ACTIVITIES, GIVEN ADEQUATE TREE PROTECTION MEASURES AS DESCRIBED ARE TAKEN.
- USE OF HYDRO VAC TECHNOLOGIES AND HAND PRUNING SHALL BE USED TO ENSURE A CLEAN INTERFACE FOR PROPER ROOT PRUNING BY A QUALIFIED ARBORIST (ISA CERTIFIED)
- A QUALIFIED ARBORIST (ISA CERTIFIED) OR OTHER TREE PROFESSIONAL AS APPROVED BY THE CITY OF OTTAWA MUST PRUNE ROOTS OR BRANCHES THAT EXTEND BEYOND PRESCRIBED TREE PROTECTION ZONE AS REQUIRED. ALL PRUNING OF TREE ROOTS AND BRANCHES MUST BE IN ACCORDANCE WITH GOOD ARBORICULTURAL STANDARDS.
- TREES SHALL BE INSPECTED BY THE LANDSCAPE ARCHITECT OR CITY FORESTER REGULARLY FOR DAMAGE INCURRED DURING CONSTRUCTION TO ENSURE APPROPRIATE PRUNING OR OTHER MEASURES ARE IMPLEMENTED.
- THE AREAS WITHIN THE TREE PROTECTION ZONE MUST REMAIN UNDISTURBED AT ALL TIMES. NO WORK OR MATERIAL STORAGE IS PERMITTED WITHIN THE TREE PROTECTION ZONE.
- TREES THAT HAVE DIED OR HAVE BEEN DAMAGED BEYOND REPAIR WILL BE REMOVED AND REPLACED WITH TREES OF AN EQUIVALENT SIZE AND SPECIES AS APPROVED BY THE LANDSCAPE ARCHITECT OR CITY OF OTTAWA.
- TREE PROTECTION FENCE MUST NOT BE REMOVED WITHOUT THE WRITTEN AUTHORIZATION OF THE LANDSCAPE ARCHITECT.
- ALL DISTURBED AREAS TO BE RESTORED TO FINISHED CONDITION WITH 150mm TOPSOIL AND SOD OR SEED AS INDICATED.
- ALL NECESSARY CLEARING AND GRUBBING SHALL BE COMPLETED BY THE CONTRACTOR. REVIEW REMOVAL WITH LANDSCAPE ARCHITECT AND THE CITY OF OTTAWA PRIOR TO ANY TREE CUTTING.
- IF CUTTING OF ROOTS OR CHANGING OF GRADES AROUND EXISTING TREES IS SPECIFIED, FOLLOW APPROPRIATE DETAILS AS DIRECTED BY LANDSCAPE ARCHITECT.
- INSTALL TREE PROTECTION FENCE TO SATISFACTION OF THE LANDSCAPE ARCHITECT. TREE PROTECTION SHALL REMAIN UNTIL SUBSTANTIAL PERFORMANCE OF THE PROJECT OR UPON WRITTEN AUTHORIZATION FROM THE LANDSCAPE ARCHITECT.
- INSTALLATION OF TREE PROTECTION FENCE SHALL BE LOCATED AT THE CRITICAL ROOT ZONE.
CRITICAL ROOT ZONE - 10cm x 300cm AT BREAST HEIGHT (DBH)
EXAMPLE: DBH = 30cm; CRZ = 300cm / 3.0m
- THE FOLLOWING TREE PROTECTION MEASURES WILL BE PROVIDED TO ENSURE THE PRESERVATION OF THE TREES IDENTIFIED IN THE DETAILED TREE PLANTING AND CONSERVATION PLAN TO THE SATISFACTION OF FORESTRY SERVICES:
 - EQUIPMENT SHALL NOT BE ALLOWED TO OPERATE, PARK, BE REPAIRED OR REFUELLED; NOR SHALL CONSTRUCTION MATERIALS BE STORED OR ANY EARTH MATERIALS BE STOCKPILED; WITHIN THE TREE PROTECTION FENCE OR WITHIN THE CRITICAL ROOT ZONE OF ANY TREE. WASTE OR VOLATILE MATERIALS, SUCH AS MINERAL SPIRITS, OIL OR PAINT THINNER SHALL NOT BE DISPOSED OF ON SITE.
 - WHEN EXCAVATION MUST TAKE PLACE WITHIN THE CRITICAL ROOT ZONE OF A TREE, A TRENCH SHALL BE DUG CAREFULLY BY HAND OR WITH A ROOT-CUTTING (STUMP GRINDER) OR STONE CUTTING (CUT-OFF MACHINE ALONG THE FURTHEST REACH OF THE CUT. IF ANY TREE ROOTS ARE EXPOSED DURING CONSTRUCTION, THEY SHALL BE IMMEDIATELY REBURIED WITH SOIL OR COVERED WITH FILTER CLOTH OR WOOD CHIPS AND KEPT MOIST UNTIL THEY CAN BE BURIED PERMANENTLY.

TREE PLANTING RECOMMENDATIONS:

- THE USE OF NATIVE, NON-INVASIVE TREE SPECIES ARE RECOMMENDED. FOR EXAMPLE, BUT NOT LIMITED TO, SPECIES SUCH AS ACER RUBRUM, ASCULUS GLABRA, AMELANCHIER LAEVIS, CELTIS OCCIDENTALIS, GYMNOCADLUS DIOICUS, QUERCUS MACROCARPA, QUERCUS RUBRA.
- GUIDELINES FOR TREE PLANTING IN SENSITIVE MARINE CLAY SOILS SHALL BE FOLLOWED IF APPLICABLE TO THE SITE.

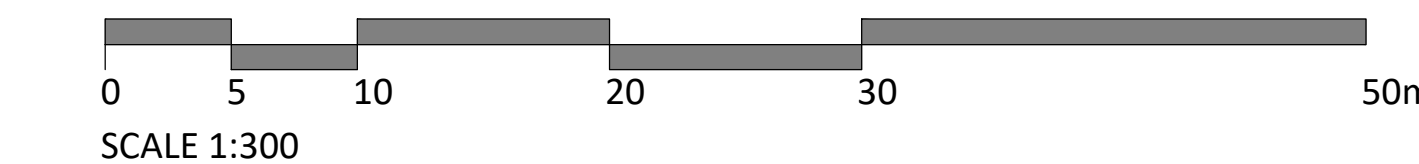


Ottawa TREE PROTECTION SPECIFICATION
TO BE IMPLEMENTED FOR RETAINED TREES, BOTH ON SITE AND ON ADJACENT SITES, PRIOR TO ANY TREE REMOVAL OR SITE WORKS AND MAINTAINED FOR THE DURATION OF WORK ACTIVITIES ON SITE.

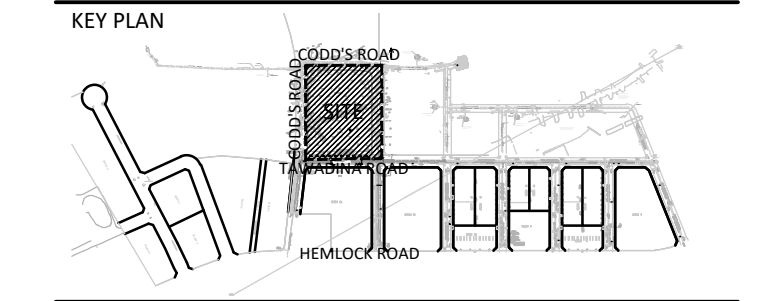
SCALE: N.T.S.
DATE: MARCH 2021
DRAWING NO: 1 of 1

3 TREE PROTECTION DETAIL PER CITY STANDARD
N.T.S.

TREE #	BOTANICAL NAME	COMMON NAME	DBH (cm)	OWNERSHIP	CONDITION	NOTES	TO BE PRESERVED	REASON FOR REMOVAL
1	Quercus palustris	Pin Oak	3.80	Public - ROW	GOOD	Symmetrical canopy, Single Stem	YES	
2	Quercus palustris	Pin Oak	3.80	Public - ROW	GOOD	Symmetrical canopy, Single Stem	YES	
3	Catalpa speciosa	Northern Catalpa	3.18	Public - ROW	GOOD	Symmetrical canopy, Single Stem	YES	
4	Catalpa speciosa	Northern Catalpa	3.18	Public - ROW	GOOD	Symmetrical canopy, Single Stem	NO	Conflicts with proposed development
5	Acer rubrum	Red Maple	5.08	Public - ROW	GOOD	Symmetrical canopy, Single Stem	YES	
6	Acer rubrum	Red Maple	5.08	Public - ROW	GOOD	Symmetrical canopy, Single Stem	YES	
7	Catalpa speciosa	Northern Catalpa	3.80	Public - ROW	GOOD	Symmetrical canopy, Single Stem	NO	Conflicts with proposed development
8	Catalpa speciosa	Northern Catalpa	3.80	Public - ROW	GOOD	Symmetrical canopy, Single Stem	NO	Conflicts with proposed development
9	Quercus palustris	Pin Oak	3.80	Public - ROW	GOOD	Symmetrical canopy, Single Stem	YES	
10	Quercus palustris	Pin Oak	3.80	Public - ROW	GOOD	Symmetrical canopy, Single Stem	YES	



Contractor shall check all dimensions on the work and report any discrepancy to the Landscape Architect before proceeding. All drawings and specifications are the property of the Landscape Architect and must be returned at the completion of the work. This drawing is not to be used for construction until signed by the Landscape Architect.



LEGEND

- PROPERTY LINE
- TREE PROTECTION FENCING
- EXISTING TREE
- EXISTING TREE (TO BE REMOVED)
- CRITICAL ROOT ZONE
- TREE IDENTIFICATION NUMBER
- PROPOSED BUILDING

No.	Description	Date
1	Issued for Site Plan Control Application	26-03-26

OWNER/APPLICANT
WATERIDGE LIFESTYLE LTD.
1505 Carling Avenue, Ottawa ON K1Z 7J9

SURVEYOR
MONUMENT SURVEYING LTD.
1755 Woodward Drive, #200, Ottawa ON K2C 0P9

ARCHITECT
T BORNHARDT ARCHITECT
1541 R35 Cove Road, Portland ON K0G 3V0

GEOTECH ENGINEER
CAMBLUM CONSULTING & ENGINEERING
33 Hesperian Court, # 202, Kingston ON K7K 7G3

CIVIL
ROBINSON LAND DEVELOPMENT
2936 Baseline Road, Ottawa ON K7X 6Y3

STRUCTURAL ENGINEER
E-H-M STRUCTURAL LTD.
333 Preston Street, #110, Ottawa ON K1S 5N4

LANDSCAPE ARCHITECT
NAK DESIGN STRATEGIES
1285 Wellington St., Ottawa ON K1Y 3A8

MECHANICAL & ELECTRICAL
GOODRICH, WEDGWOOD & ASSOCIATES LTD.
1888 Woodward Drive, Ottawa ON K2C 3R8

ASSOCIATION OF LANDSCAPE ARCHITECTS ONTARIO
MEMBER

NAK design strategies
1285 WELLINGTON STREET, OTTAWA, ON K1Y 3A8 CANADA
T 613.237.2345 NAKDESIGNSTRATEGIES.COM

WATERIDGE LIFESTYLES - PHASE 1 RETIREMENT HOME
Block 21 Wateridge Village
200 Codd's Road, Ottawa ON K1K 5C6

Title
TREE CONSERVATION REPORT

Date	2026-03-26	Sheet	TCR 02
Scale	1:300	Drawn	JE
Checked	MK	Job No.	25-360