

**GENERAL NOTES:**

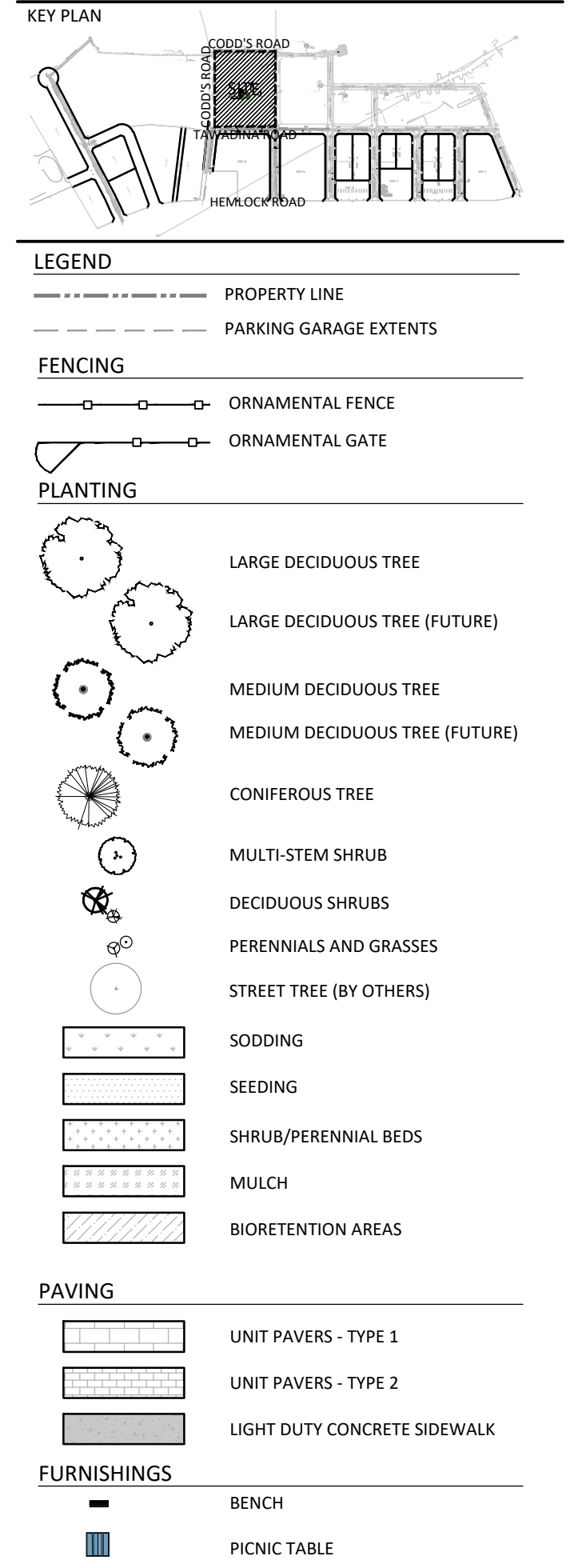
1. THE LANDSCAPE PLAN WAS PREPARED IN CONJUNCTION WITH THE GEOTECHNICAL REPORT PREPARED BY CAMBIUM INC.: REPORT 24896-001 Rev.2
2. ALL EXISTING SITE INFORMATION AS PER SITE SURVEY PLAN DATED DECEMBER 20, 2024 AND PREPARED BY ANNIS O'SULLIVAN, VOLLEBEKK LTD.
3. ALL PLANT MATERIAL SHALL BE NURSERY GROWN STOCK UNLESS OTHERWISE NOTED.
4. TREES TO HAVE A MINIMUM 1800 CLEAR STEM ABOVE GRADE.
5. CONTRACTOR TO MAKE GOOD ALL EXISTING AREAS DAMAGED BY HIS WORK TO THE SATISFACTION OF THE CONTRACTOR.
6. ALL PLANT MATERIAL SHALL BE WARRANTED FOR TWO YEARS FROM THE DATE OF SUBSTANTIAL COMPLETION.
7. CONTRACTOR TO VERIFY LOCATION OF ALL SERVICES PRIOR TO ANY EXCAVATION.
8. ANY PROPOSED SUBSTITUTIONS OF PLANT SPECIES SHALL BE MADE WITH PLANTS OF EQUIVALENT OVERALL FORM, HEIGHT, BRANCHING HABIT, FLOWER, LEAF, COLOR, FRUIT AND CULTURE AND ONLY AFTER APPROVAL OF THE LANDSCAPE ARCHITECT.

PLANT LIST - TREES, SHRUBS, PERENNIALS							
KEY	BOTANICAL NAME	COMMON NAME	QTY	SIZE	TYPE	NATIVE	OWNER
<b>LARGE CONIFEROUS TREES</b>							
PG	PICEA GLAUCA	WHITE SPRUCE	2	250cm HT	B&B	Y	PRIVATE
<b>LARGE DECIDUOUS TREES</b>							
AR	ACER RUBRUM	RED MAPLE	3	50mm CAL	B&B	Y	PRIVATE
CS	CATALPA SPECIOSA	NORTHERN CATALPA	2	50mm CAL	B&B	Y	PRIVATE
CO	CELTIS OCCIDENTALIS	HACKBERRY	2	50mm CAL	B&B	Y	PRIVATE
QP	QUERCUS PALUSTRIS	PIN OAK	4	50mm CAL	B&B	Y	PRIVATE
BA	BETULA ALLEGHANIENSIS	YELLOW BIRCH	5	50mm CAL	B&B	Y	PRIVATE
<b>MEDIUM DECIDUOUS TREES</b>							
OV	OSTRYA VIRGINIANA	IRONWOOD	3	50mm CAL	B&B	Y	PRIVATE
<b>MULTI-STEM TREE FORM SHRUBS</b>							
Ac	AMELANCHIER CANADENSIS	SERVICEBERRY	11	3 GAL	POT	Y	PRIVATE
Ca	CORNUS ALTERNIFOLIA	PAGODA DOGWOOD	7	3 GAL	POT	Y	PRIVATE
Hv	HAMAMELIS VIRGINIANA	WITCHHAZEL	5	3 GAL	POT	Y	PRIVATE
<b>CONIFEROUS SHRUBS</b>							
Ka	KALMIA ANGUSTIFOLIA	SHEEP LAUREL	35	3 GAL	POT	Y	PRIVATE
Tc	TAXUS CANADENSIS	CANADIAN YEW	39	3 GAL	POT	Y	PRIVATE
<b>DECIDUOUS SHRUBS</b>							
Ap	AESCULUS PARVIFLORA	BOTTLEBRUSH BUCKEY	18	7 GAL	POT	Y	PRIVATE
Am	ARONIA MELANOCARPA	BLACK CHOKEBERRY	10	3 GAL	POT	Y	PRIVATE
Cs	CORNUS SERICEA	RED TWIG DOGWOOD	38	3 GAL	POT	Y	PRIVATE
Dr	DIERVILLA LONICERA	BUSH HONEYSUCKLE	67	3 GAL	POT	Y	PRIVATE
Po	PHYSOCARPUS OPULIFOLIUS 'NANUS'	DWARF NINEBARK	78	3 GAL	POT	N	PRIVATE
Sa	SYMPHORICARPOS ALBUS	SNOWBERRY	35	3 GAL	POT	Y	PRIVATE
Rt	RHUS TYPHINA	STAGHORN SUMAC	18	7 GAL	POT	Y	PRIVATE
<b>PERENNIALS AND ORNAMENTAL GRASSES - PLANTING BEDS</b>							
ac	ANEMONE CANADENSIS	CANADIAN ANEMONE	494	2 GAL	POT	Y	PRIVATE
ep	ECHINACEA PURPUREA	CONEFLOWER	258	2 GAL	POT	Y	PRIVATE
pp	PHLOX PANICULATA 'BLUE PARADISE'	GARDEN PHLOX	107	2 GAL	POT	Y	PRIVATE
sh	SPOROBOLUS HETEROLEPSIS	PRARIE DROPSIDE	497	2 GAL	POT	Y	PRIVATE
dc	DESCHAMPSIA CESPITOSA	TUFTED HAIR GRASS	261	2 GAL	POT	Y	PRIVATE
ss	SCHIZACHYRIUM SCOPARIUM	LITTLE BLUESTEM	110	2 GAL	POT	Y	PRIVATE
<b>PERENNIALS AND ORNAMENTAL GRASSES - BIOTENTION AREAS</b>							
ai	ASCLEPIAS INCARNATA	SWAMP MILKWEED	112	2 GAL	POT	Y	PRIVATE
an	ASTER NOVAE-ANGLIAE	NEW ENGLAND ASTER	112	2 GAL	POT	Y	PRIVATE
cb	CHELONE GLABRA	TURTLEHEAD	112	2 GAL	POT	Y	PRIVATE
cv	CAREX VULPINOIDEA	FOX SEDGE	112	2 GAL	POT	Y	PRIVATE
dc	DESCHAMPSIA CESPITOSA	TUFTED HAIR GRASS	115	2 GAL	POT	Y	PRIVATE

SOIL VOLUME PROJECTIONS (NTS)*	SINGLE	MULTIPLE	CLAY SOILS	TREE SOIL VOLUMES			
				TREE TYPE/SIZE	SINGLE TREE SOIL VOLUME	MULTIPLE TREE SOIL VOLUME (m3/TREE)	SOIL VOLUME FOR MARINE CLAY AREAS (SINGLE TREE)
SMALL				ORNAMENTAL	15	9	
MEDIUM/CONIFER				COLUMNAR	15	9	
				SMALL	20	12	25
				MEDIUM	25	15	30
				LARGE	30	18	
				CONIFER	25	15	

\*SOIL VOLUME CALCULATION BASED ON 1.5m DEPTH

Contractor shall check all dimensions on the work and report any discrepancy to the Landscape Architect before proceeding. All drawings and specifications are the property of the Landscape Architect and must be returned at the completion of the work. This drawing is not to be used for construction until signed by the Landscape Architect.



No.	Description	Date
5	Issued for revised SPA First Submission	26-02-27
4	Issued for SPA First Submission	26-01-15
3	Issued for Client Review	26-01-14
2	Issued for Review & Coordination	25-12-12
1	Issued for Client Review	25-11-26

**OWNER/APPLICANT**  
WATERIDGE LIFESTYLE LTD.  
1505 Carling Avenue, Ottawa ON K1Z 7J9

**SURVEYOR**  
MONUMENT-URSD SURVEYING LTD.  
1755 Woodward Drive, #200, Ottawa ON K2C 0P9

**ARCHITECT**  
T BORNHARDT ARCHITECT  
3541 R35 Cove Road, Portland ON K0G 3V0

**GEOTECH ENGINEER**  
CAMBIUM CONSULTING & ENGINEERING  
33 Hyperion Court, # 202, Kingston ON K7K 7G3

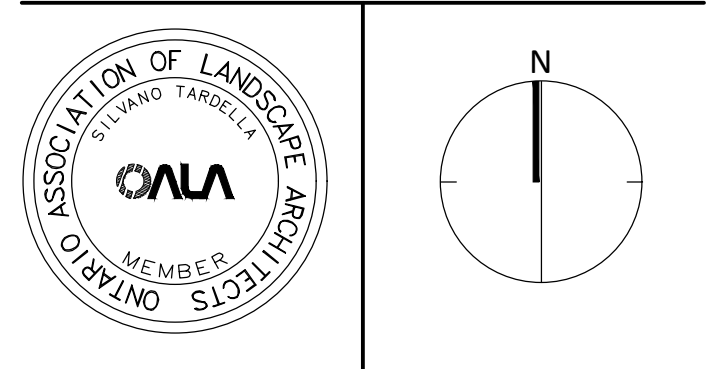
**CIVIL**  
ROBINSON LAND DEVELOPMENT  
2936 Baseline Road, Ottawa ON K7X 7G3

**STRUCTURAL ENGINEER**  
SJM STRUCTURAL LTD.  
333 Preston Street, #130, Ottawa ON K3S 5N4

**LANDSCAPE ARCHITECT**  
NAK DESIGN STRATEGIES  
1285 Wellington St., Ottawa ON K1Y 3A8

**MECHANICAL & ELECTRICAL**  
GOODRICH, WEIDMANN & ASSOCIATES LTD.  
1888 Woodward Drive, Ottawa ON K2C 3R8

**PROPERTY LEGAL DESCRIPTION:**  
Part of Lots 21, 22, and 23, Concession 1 (Ottawa Front), Geographic Township of Gloucester Registered Plan 414-1621, City of Ottawa.



**NAK design strategies**

1285 WELLINGTON STREET, OTTAWA, ON K1Y 3A8 CANADA  
T 613.237.2345 NAKDESIGNSTRATEGIES.COM

**WATERIDGE LIFESTYLES - PHASE 1 RETIREMENT HOME**  
Block 21 Wateridge Village  
200 Codd's Road, Ottawa ON K1K 5C6

PHASE 1 - LANDSCAPE PLANTING PLAN & SOIL VOLUME	
Date	2025-11-04
Scale	1:300
Drawn	JE
Checked	MK
Job No.	25-360
Sheet	L2.0

CITY FILE N° DXX-XX-XX-XXXX

PLAN N° XXXXX