

TOPOGRAPHIC SKETCH OF

SELKIRK STREET AND
NORTH RIVER ROAD
CITY OF OTTAWA

Prepared by Annis, O'Sullivan, Vollebek Ltd.
Fieldwork Completed November 28, 2025



Metric
DISTANCES AND COORDINATES SHOWN ON THIS PLAN
ARE IN METRES AND CAN BE CONVERTED TO FEET BY
DIVIDING BY 0.3048.

Notes & Legend

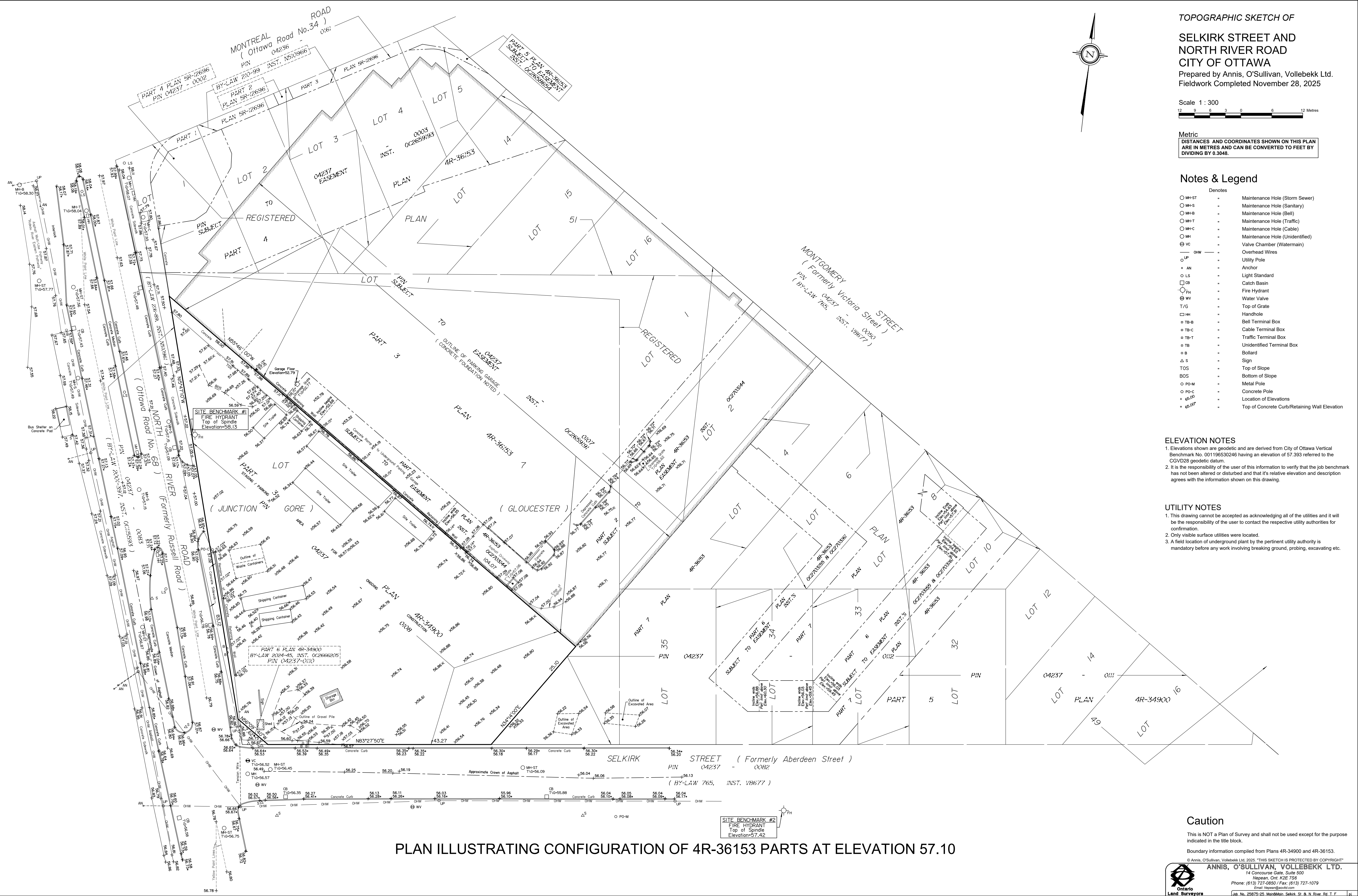
Denotes	
○ MH-ST	Maintenance Hole (Storm Sewer)
○ MH-S	Maintenance Hole (Sanitary)
○ MH-B	Maintenance Hole (Bell)
○ MH-T	Maintenance Hole (Traffic)
○ MH-C	Maintenance Hole (Cable)
○ MH	Maintenance Hole (Unidentified)
⊙ VC	Valve Chamber (Watermain)
— OHW	Overhead Wires
○ UP	Utility Pole
• AN	Anchor
○ LS	Light Standard
□ CB	Catch Basin
○ FH	Fire Hydrant
⊙ WV	Water Valve
T/G	Top of Grate
□ HH	Handhole
□ TB-B	Bell Terminal Box
□ TB-C	Cable Terminal Box
□ TB-T	Traffic Terminal Box
□ TB	Unidentified Terminal Box
○ B	Bollard
△ S	Sign
TOS	Top of Slope
BOS	Bottom of Slope
○ PO-M	Metal Pole
○ PO-C	Concrete Pole
+ 45.00	Location of Elevations
+ 45.00'	Top of Concrete Curb/Retaining Wall Elevation

ELEVATION NOTES

- Elevations shown are geodetic and are derived from City of Ottawa Vertical Benchmark No. 001196530246 having an elevation of 57.393 referred to the CGVD28 geodetic datum.
- It is the responsibility of the user of this information to verify that the job benchmark has not been altered or disturbed and that its relative elevation and description agrees with the information shown on this drawing.

UTILITY NOTES

- This drawing cannot be accepted as acknowledging all of the utilities and it will be the responsibility of the user to contact the respective utility authorities for confirmation.
- Only visible surface utilities were located.
- A field location of underground plant by the pertinent utility authority is mandatory before any work involving breaking ground, probing, excavating etc.



PLAN ILLUSTRATING CONFIGURATION OF 4R-36153 PARTS AT ELEVATION 57.10

Caution
This is NOT a Plan of Survey and shall not be used except for the purpose indicated in the title block.
Boundary information compiled from Plans 4R-34900 and 4R-36153.

© Annis, O'Sullivan, Vollebek Ltd. 2025. THIS SKETCH IS PROTECTED BY COPYRIGHT.
ANNIS, O'SULLIVAN, VOLLEBEK LTD.
 14 Concourse Gate, Suite 500
 Nepean, Ont. K2E 7S6
 Phone: (613) 727-0850 / Fax: (613) 727-1079
 Email: nepean@aosvltd.com
 Ontario Land Surveyors
 Reg. No. 25875-25, Member, Selkirk St. & N. River Rd. T.F.