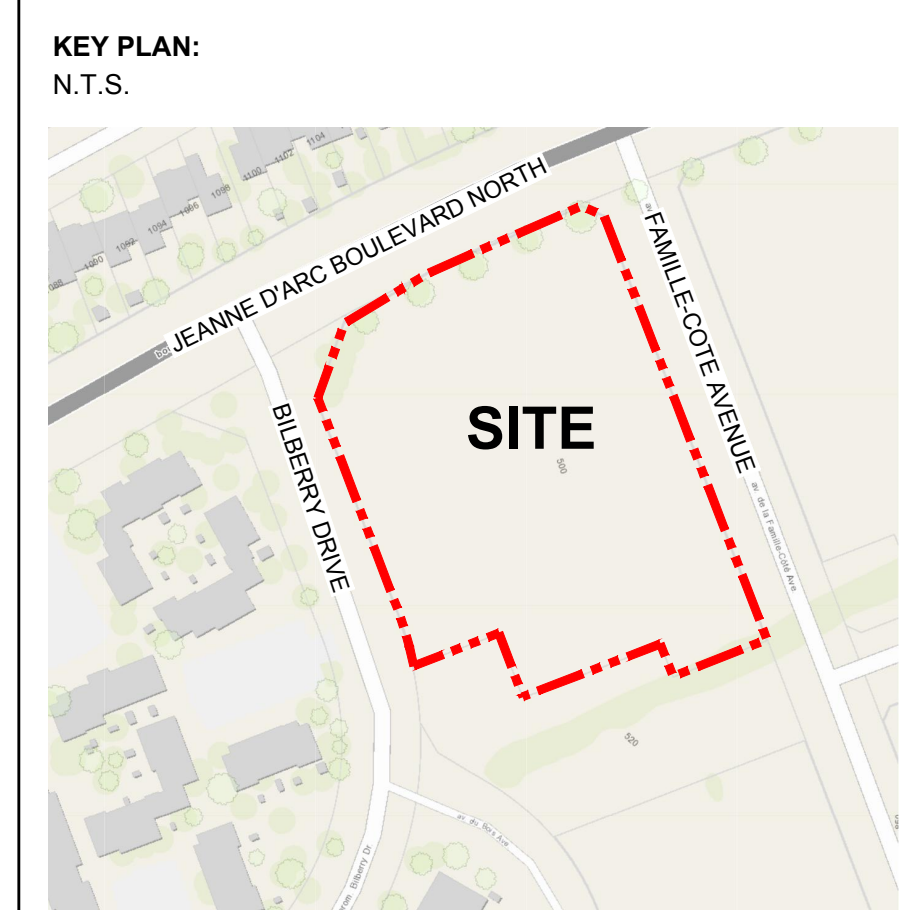


KEY	QTY	BOTANICAL NAME	COMMON NAME	SIZE	CONDITION	REMARKS	OWNERSHIP	COMMENTS
1	1	<i>Acer ginnala</i>	Amur Maple	50mm dbh	DEAD	TO BE REMOVED	500 Famille-Côté Ave	
2	1	<i>Acer ginnala</i>	Amur Maple	50mm dbh	GOOD	TO REMAIN	500 Famille-Côté Ave	
3	1	<i>Acer ginnala</i>	Amur Maple	50mm dbh	GOOD	TO BE REMOVED	500 Famille-Côté Ave	In conflict with parking lot entrance
4	1	<i>Amelanchier canadensis</i>	Shadblow Serviceberry	50mm dbh	POOR	TO BE REMOVED	500 Famille-Côté Ave	In conflict with parking lot entrance
5	1	<i>Amelanchier canadensis</i>	Shadblow Serviceberry	50mm dbh	GOOD	TO REMAIN	500 Famille-Côté Ave	In conflict with parking spaces
6	1	<i>Amelanchier canadensis</i>	Shadblow Serviceberry	50mm dbh	GOOD	TO REMAIN	500 Famille-Côté Ave	In conflict with parking spaces
7	1	<i>Acer saccharinum</i>	Silver Maple	450mm dbh	GOOD	TO REMAIN	500 Famille-Côté Ave	In conflict with proposed building
8	1	<i>Acer saccharinum</i>	Silver Maple	600mm dbh	GOOD	TO REMAIN	500 Famille-Côté Ave	
9	1	<i>Acer saccharinum</i>	Silver Maple	450mm dbh	GOOD	TO REMAIN	500 Famille-Côté Ave	
10	1	<i>Acer saccharinum</i>	Silver Maple	450mm dbh	GOOD	TO REMAIN	500 Famille-Côté Ave	
11	1	<i>Acer saccharinum</i>	Silver Maple	550mm dbh	GOOD	TO REMAIN	500 Famille-Côté Ave	
12	1	<i>Amelanchier canadensis</i>	Shadblow Serviceberry	50mm dbh	GOOD	TO REMAIN	City of Ottawa	
13	1	<i>Amelanchier canadensis</i>	Shadblow Serviceberry	50mm dbh	GOOD	TO REMAIN	City of Ottawa	
14	1	<i>Amelanchier canadensis</i>	Shadblow Serviceberry	50mm dbh	GOOD	TO REMAIN	City of Ottawa	
15	1	<i>Amelanchier canadensis</i>	Shadblow Serviceberry	50mm dbh	GOOD	TO BE REMOVED	City of Ottawa	
16	1	<i>Tilia cordata</i>	Little-Leaf Linden	50mm dbh	POOR	TO BE REMOVED	City of Ottawa	Leaf scorch
17	1	<i>Tilia cordata</i>	Little-Leaf Linden	50mm dbh	POOR	TO BE REMOVED	City of Ottawa	Leaf scorch
18	1	<i>Tilia cordata</i>	Little-Leaf Linden	50mm dbh	POOR	TO REMAIN	City of Ottawa	
19	1	<i>Tilia cordata</i>	Little-Leaf Linden	50mm dbh	POOR	TO REMAIN	City of Ottawa	
20	1	<i>Gleditsia triacanthos</i>	Honey Locust	50mm dbh	GOOD	TO REMAIN	City of Ottawa	
21	1	<i>Gleditsia triacanthos</i>	Honey Locust	50mm dbh	POOR	TO BE REMOVED	City of Ottawa	
22	1	<i>Gleditsia triacanthos</i>	Honey Locust	50mm dbh	DEAD	TO BE REMOVED	City of Ottawa	

- GENERAL NOTES:**
- IT IS THE RESPONSIBILITY OF THE APPROPRIATE CONTRACTOR OR OFFICIAL TO REPORT ANY ERRORS, OMISSIONS OR DISCREPANCIES ON THIS PLAN WITH ACTUAL SITE CONDITIONS TO THE LANDSCAPE ARCHITECT BEFORE PROCEEDING WITH CONSTRUCTION.
 - THE CONTRACTOR IS TO NOTIFY ALL UTILITY COMPANIES AND AUTHORITIES PRIOR TO ANY EXCAVATION AND ASCERTAIN LOCATIONS OF UNDERGROUND SERVICES.
 - THE CONTRACTOR IS TO REINSTATE ALL AREAS AND ITEMS DAMAGED AS A RESULT OF CONSTRUCTION ACTIVITY.
 - THE CONTRACTOR IS TO COMPLY WITH ALL PERTINENT CODES AND BY-LAWS.
 - THE CONTRACTOR IS TO MAINTAIN A POSITIVE SURFACE RUN-OFF THROUGHOUT THE ENTIRE CONSTRUCTION PERIOD.
 - THE LANDSCAPE ARCHITECT IS NOT RESPONSIBLE FOR SUBSURFACE CONDITIONS.
 - THE CONTRACTOR IS TO IDENTIFY ALL EXISTING TREES TO REMAIN ON SITE WITH THE LANDSCAPE ARCHITECT PRIOR TO CONSTRUCTION.
 - THE CONTRACTOR IS TO STAKE THE PROPOSED LOCATION OF ALL PLANT MATERIAL IN CONJUNCTION WITH THE LANDSCAPE ARCHITECT PRIOR TO EXCAVATION.
 - MINIMUM DISTANCES FOR SELECTED DECIDUOUS TREES ARE AS FOLLOWS:
 - BUILDING FOUNDATIONS - 7.5M
 - SIDEWALKS - 1.5M
 - PUBLIC STREETS - 2.5M
 - UNDERGROUND INFRASTRUCTURE - 2.0M
 - ALL TREES WITHIN 1M OF UNDERGROUND UTILITY TRENCHES ARE TO BE EXCAVATED BY HAND.
 - REMOVE ALL PROTECTIVE WRAPPING FROM TREE TRUNKS AFTER INSTALLATION.
 - STAKING OF TREES SHALL ONLY BE PERFORMED IF NECESSARY.
 - ENSURE THAT MULCH IS PULLED BACK A MINIMUM DISTANCE OF 75MM FROM BASE OF TREE TRUNK.



PROPOSED PLANT LIST

KEY	QTY	BOTANICAL NAME	COMMON NAME	SIZE	CONDITION	REMARKS
TREES						
AL	2	<i>Amelanchier laevis</i> 'Spring Flurry'	Spring Flurry Serviceberry	50mm ø	B&B	Native
AF	2	<i>Acer x freemanii</i>	Freeman's Maple	50mm ø	B&B	
AG	1	<i>Acer ginnala</i>	Amur Maple	50mm ø	B&B	
CO	1	<i>Celtis occidentalis</i>	Hackberry	50mm ø	B&B	Native
GD	3	<i>Gleditsia triacanthos</i> var. <i>inermis</i> 'Draves'	Street Keeper Honeylocust	50mm ø	B&B	
GT	4	<i>Gleditsia triacanthos</i>	Honey Locust	50mm ø	B&B	Native to S. Ont
PG	1	<i>Picea glauca</i>	White Spruce	200mm ht.	B&B	Native
TA	3	<i>Tilia americana</i>	Basswood	50mm ø	B&B	Native
SHRUBS						
AH	24	<i>Hydrangea arborescens</i> 'Annabelle'	Annabelle Hydrangea	3 gal. pot	Potted	Space 1000mm o.c.
BB	16	<i>Euonymus alatus</i> 'Compactus'	Burning Bush	600 mm ht.	Potted	Space 1200mm o.c.
CP	5	<i>Syringa vulgaris</i>	Common Purple Lilac	1200 mm ht.	Potted	Space 2000mm o.c.
JH	88	<i>Juniperus horizontalis</i> 'Andorra Compacta'	Compact Andorra Juniper	600 mm spr.	Potted	Space 1200mm o.c.
JV	1	<i>Juniperus virginiana</i>	Eastern Red Cedar	3 gal pot	Potted	Native
RA	47	<i>Rhus typhina</i> 'Gro-Low'	Gro-Low Fragrant Sumac	500 mm ht.	Potted	Space 1000mm o.c. Native
RR	26	<i>Rosa rugosa</i>	Rugosa Rose	800 mm ht.	Potted	Space 1000mm o.c.
SF	42	<i>Sorbaria sorbifolia</i> 'Sem'	Sem False Spirea	600 mm ht.	Potted	Space 1000mm o.c.
SS	41	<i>Sorbaria sorbifolia</i>	Ural False Spirea	800 mm ht.	Potted	Space 1200mm o.c.
SV	35	<i>Spiraea x vanhouttei</i>	Bridalwreath Spirea	600 mm ht.	Potted	Space 1200mm o.c.
ORNAMENTAL GRASSES AND PERENNIALS						
KF	91	<i>Calamagrostis</i> 'Karl Foerster'	Feather Reed Grass	250mm pot	Potted	Space 1000mm o.c.
OD	119	<i>Calamagrostis</i> 'Overdam'	Overdam Grass	250mm pot	Potted	Space 1000mm o.c.

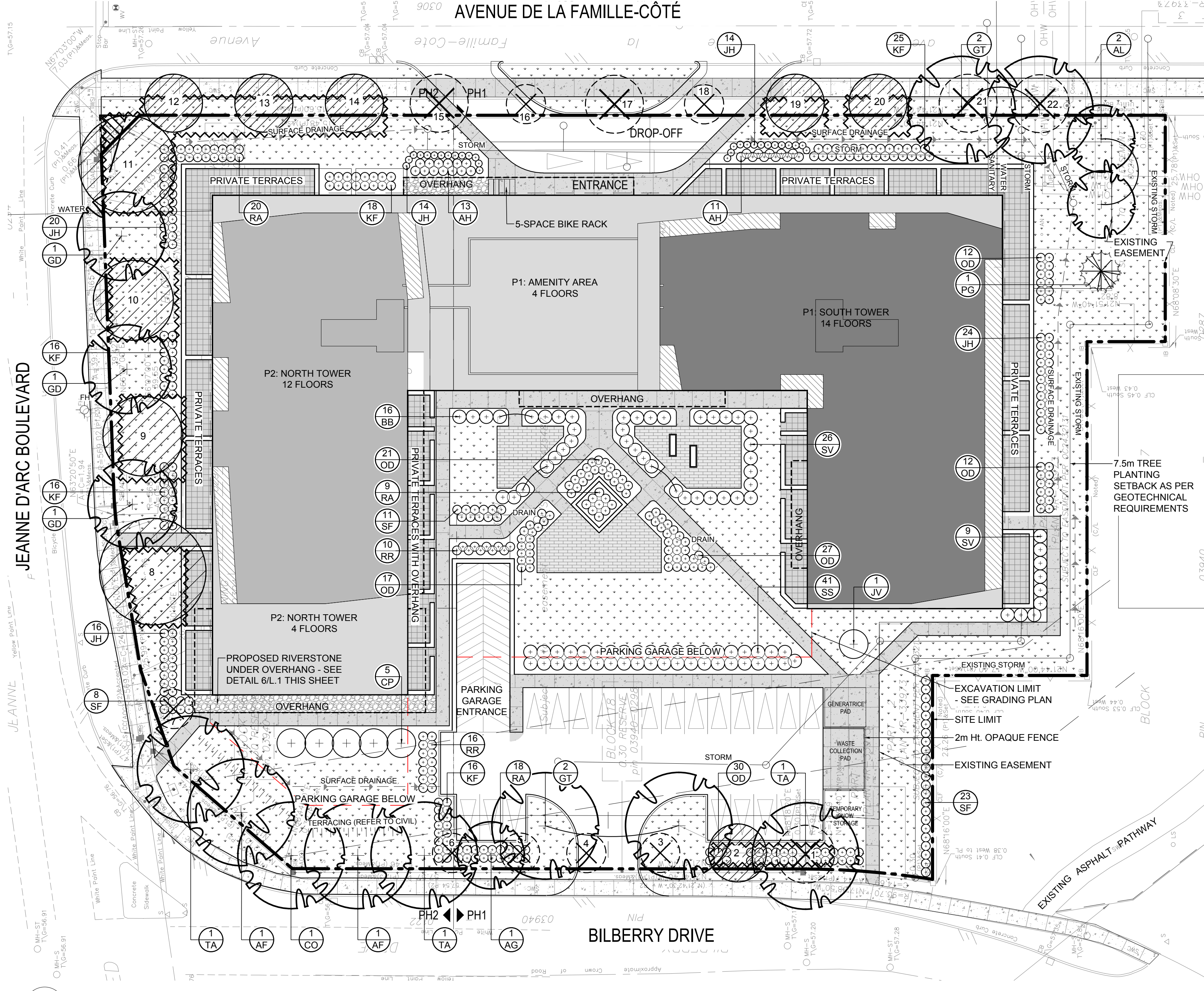
NOTE: ALL PLANT MATERIAL IS PROPOSED ON PRIVATE PROPERTY

CLIENT
Address: 4605 St. Lawrence Blvd. #100
Ottawa, Ontario K1J 1J5
Phone Number: (416) 419-8005

CONSULTANTS
SURVEYORS:
ANNIS, O'SULLIVAN, VOLLEBEKK LTD.
14 Cornwall Park, Suite 200
Ottawa, Ontario K1J 1J5
Phone: (416) 271-0000 Fax: (416) 271-0170
www.annis-osullivan-vollebekk.com

ARCHITECTS:
1300 Avenue de la Famille-Côte, Ottawa, Ontario K1C 2C2
Phone Number: (416) 271-0000

ENGINEERS:
1200 Avenue de la Famille-Côte, Ottawa, Ontario K1C 2C2
Phone Number: (416) 271-0000

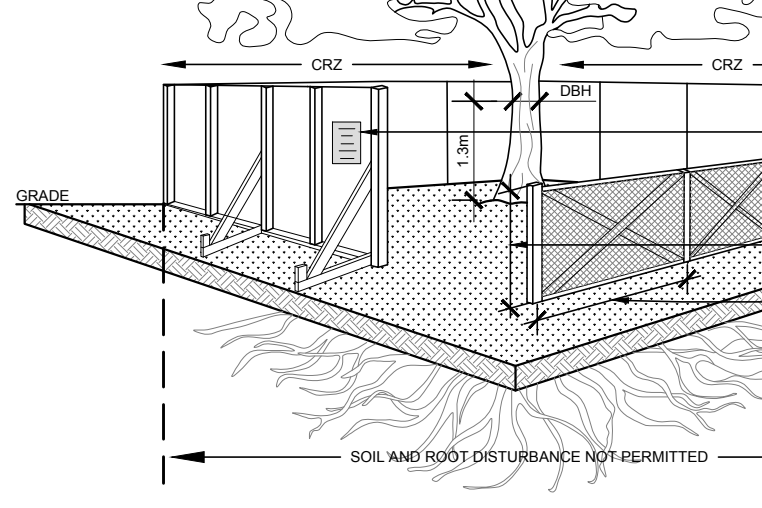
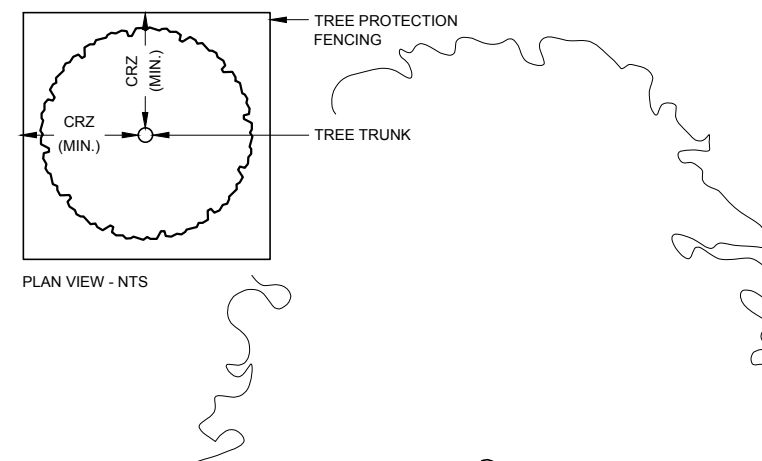


BY-LAWS

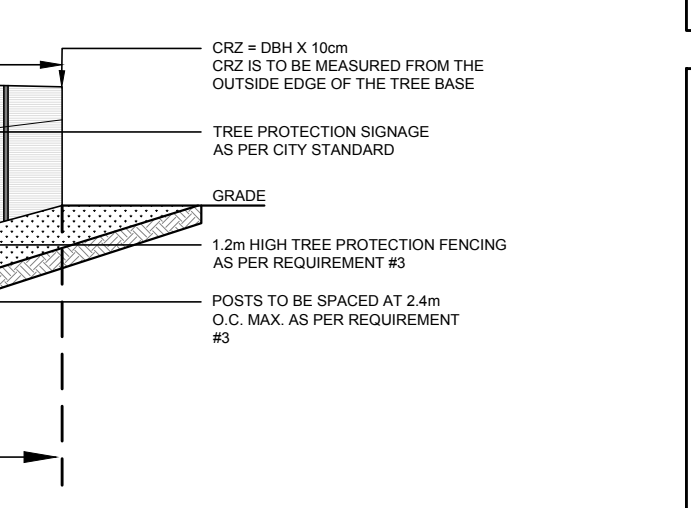
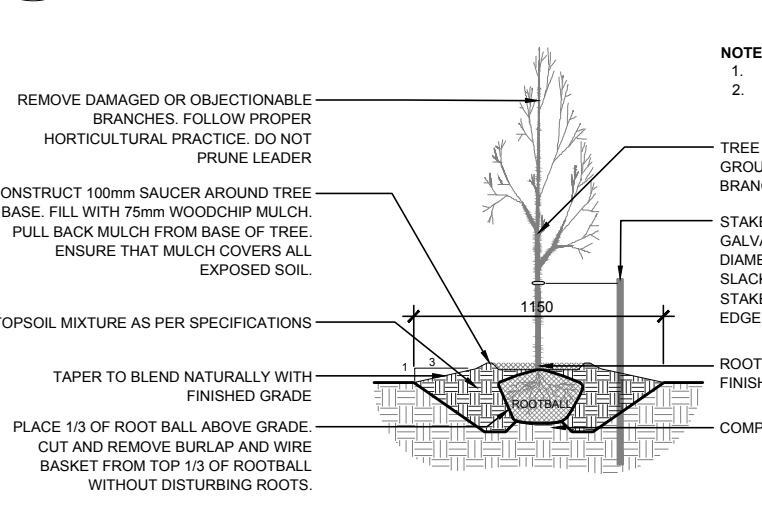
ALL CITY-OWNED TREES ARE PROTECTED UNDER THE MUNICIPAL TREES AND NATURAL AREAS PROTECTION BY-LAW (2005-279) WITHIN THE URBAN AREA.
PRIVATELY OWNED TREES GREATER THAN 500mm IN DIAMETER ON LOTS 1 HECTARE IN SIZE OR LESS, AND TREES GREATER THAN 100mm IN DIAMETER ON LOTS GREATER THAN 1 HECTARE, ARE PROTECTED UNDER THE URBAN TREE CONSERVATION BY-LAW (2005-200).

TREE PROTECTION REQUIREMENTS:

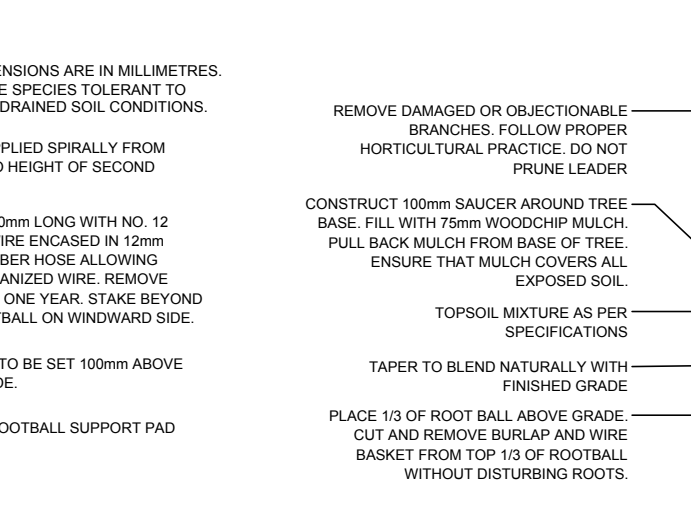
- PRIOR TO ANY WORK ACTIVITY WITHIN THE CRITICAL ROOT ZONE (CRZ) ±10% DIAMETER OF A TREE, TREE PROTECTION FENCING MUST BE INSTALLED SURROUNDING THE CRITICAL ROOT ZONE AND REMAIN IN PLACE UNTIL THE WORK IS COMPLETE.
- UNLESS FENCING IS APPROVED BY CITY FORESTRY STAFF, FOR WORK WITHIN THE CRZ:
- DO NOT PLACE ANY MATERIAL OR EQUIPMENT HOLDING OUTHOUSES;
- DO NOT ATTACH ANY SIGNS, NOTICES OR POSTERS TO ANY TREE;
- DO NOT RAISE OR LOWER THE EXISTING GRADE;
- TUNNEL OR BORE WHEN DIGGING;
- ENSURE THAT EXHAUST FUMES FROM ALL EQUIPMENT ARE NOT DIRECTED TO ANY TREE CANOPY;
- DO NOT EXTEND HARD SURFACE OR SIGNIFICANTLY CHANGE LANDSCAPING.
- TREE PROTECTION FENCING MUST BE AT LEAST 1.2m IN HEIGHT, AND BE CONSTRUCTED OF RIGID OR FRAMED MATERIALS (E.G. MASONRY, STEEL, ALUMINUM, WOOD, OR CONCRETE) WITH A 2"x4" WOOD FRAME WITH POSTS 2-4m APART, SUCH THAT THE FENCE LOCATION CANNOT BE ALTERED. ALL SUPPORTS AND BRACKETS MUST BE PLACED OUTSIDE OF THE CRZ AND INSTALLATION MUST MINIMIZE DAMAGE TO EXISTING ROOTS. SEE DETAIL.
- THE LOCATION OF THE TREE PROTECTION FENCING MUST BE DETERMINED BY AN ARBORIST AND DETAILED ON ANY ASSOCIATED PLANS FOR THE SITE. ALSO, TREE CONSERVATION REPORT, TREE DISCLOSURE REPORT, THE PLAN AND CONSTRUCTION FENCING MUST BE APPROVED BY CITY FORESTRY STAFF PRIOR TO THE COMMENCEMENT OF WORK.
- IF THE FENCED TREE PROTECTION AREA MUST BE REDUCED TO FACILITATE CONSTRUCTION, MITIGATION MEASURES MUST BE PRESCRIBED BY AN ARBORIST AND APPROVED BY CITY FORESTRY STAFF. THESE MAY INCLUDE THE PLACEMENT OF PLYWOOD, WOOD CHIPS OR STEEL PLATING OVER THE ROOTS FOR PROTECTION OR THE PROPER PRUNING AND CARE OF ROOTS WHERE ENCOUNTERED.



2 TREE PROTECTION FENCE
SCALE: NTS



3 DECIDUOUS TREE PLANTING
SCALE: NTS



TREE PLANTING NOTES:

- ALL TREES ARE PROPOSED ON PRIVATE PROPERTY.
- PROPOSED TREES SPACING: MIN. 7m O.C.
- ALL TREES PROPOSED WITH A SOIL DEPTH OF 1.5m.
- THE LANDSCAPE PLAN WAS PREPARED IN CONJUNCTION WITH THE GEOTECHNICAL INVESTIGATION (PATTERSON, REPORT PG8056-MEMO.01, June 1, 2026).
- SOIL VOLUME REQUIREMENTS:

TREE TYPE / SIZE	SINGLE TREE SOIL VOLUME (m³)	MULTIPLE TREE SOIL VOLUME (m³/tree)
Ornamental / columnar	15	9
Small	20	12
Medium / conifer	25	15
Large	30	18

40 YEAR CANOPY CALCULATION:

- 8949m² SITE AREA
- 1 CONIFEROUS TREES PROPOSED (20m² ea.)
- 3 SMALL DECIDUOUS TREES PROPOSED (16m² ea.)
- 3 MEDIUM DECIDUOUS TREES PROPOSED (79m² ea.)
- 10 LARGE DECIDUOUS TREES PROPOSED (177m² ea.)
- EXISTING TREE CANOPY COVER TO REMAIN: 349m²
- **2424m² or 27.1% CANOPY COVER**
- *Large deciduous tree calculated at 15m spread, Medium deciduous tree calculated at 10m spread, small deciduous tree calculated at 4.5m spread; Conifer tree calculated at 5m spread.

LEGEND

- EXISTING TREE TO REMAIN
- EXISTING TREE TO BE REMOVED
- PROPOSED DECIDUOUS TREE
- PROPOSED CONIFEROUS TREE
- PROPOSED SHRUBS, PERENNIALS AND ORNAMENTAL GRASSES
- PROPOSED SOD
- PROPOSED PRECAST CONCRETE PAVERS TYPE 1
- PROPOSED PRECAST CONCRETE PAVERS TYPE 2
- PROPOSED RIVERSTONE
- PROPOSED TREE PROTECTION FENCE
- PROPERTY LINE

No.	Issue	Date	DR	CK
6	ISSUED FOR SPA	06/12/2026	WF	JL
5	ISSUED FOR SPA	04/02/2026	ML	JL
4	ISSUED FOR DISCUSSION AND REVIEW	11/12/2025	WF	JL
3	ISSUED FOR DISCUSSION AND REVIEW	13/11/2025	ML	JL
2	REVISED AS PER COMMENTS	12/09/2025	CAT	JL
1	ISSUED FOR REVIEW	09/09/2025	CAT	JL

JAMES B. LENNOX & ASSOCIATES INC.
LANDSCAPE ARCHITECTS
3332 CARLING AVE. OTTAWA, ONTARIO K1J 5A5
Tel. (416) 722-6168 Fax. (416) 343-3942

PROJECT
LIB ORLEANS
500 Famille-Côte Ave, Orléans, ON K1C 2C2

DRAWING
TREE CONSERVATION REPORT AND LANDSCAPE PLAN

STAMP

SCALE: AS SHOWN
START DATE: SEPTEMBER, 2025
PROJECT NO.: 25MIS2550
DRAWING NO.: L.1

PROJECT NORTH

DRAWING NO.
L.1

PLOT SIZE ARCH-D