

KEY	QTY	BOTANICAL NAME	COMMON NAME	SIZE	CONDITION	REMARKS	OWNERSHIP	COMMENTS
1	1	<i>Acer ginnala</i>	Amur Maple	50mm dbh	DEAD	TO REMAIN		
2	1	<i>Acer ginnala</i>	Amur Maple	50mm dbh	GOOD	TO REMAIN		
3	1	<i>Acer ginnala</i>	Amur Maple	50mm dbh	GOOD	TO BE REMOVED		In conflict with parking lot entrance
4	1	<i>Amelanchier canadensis</i>	Shadblow Serviceberry	50mm dbh	POOR	TO BE REMOVED		In conflict with parking lot entrance
5	1	<i>Amelanchier canadensis</i>	Shadblow Serviceberry	50mm dbh	GOOD	TO REMAIN		In conflict with parking spaces
6	1	<i>Amelanchier canadensis</i>	Shadblow Serviceberry	50mm dbh	GOOD	TO REMAIN		In conflict with proposed building
7	1	<i>Acer saccharinum</i>	Silver Maple	450mm dbh	GOOD	TO REMAIN		
8	1	<i>Acer saccharinum</i>	Silver Maple	600mm dbh	GOOD	TO REMAIN		
9	1	<i>Acer saccharinum</i>	Silver Maple	450mm dbh	GOOD	TO REMAIN		
10	1	<i>Acer saccharinum</i>	Silver Maple	450mm dbh	GOOD	TO REMAIN		
11	1	<i>Acer saccharinum</i>	Silver Maple	550mm dbh	GOOD	TO REMAIN		
12	1	<i>Amelanchier canadensis</i>	Shadblow Serviceberry	50mm dbh	GOOD	TO REMAIN		
13	1	<i>Amelanchier canadensis</i>	Shadblow Serviceberry	50mm dbh	GOOD	TO REMAIN		
14	1	<i>Amelanchier canadensis</i>	Shadblow Serviceberry	50mm dbh	GOOD	TO REMAIN		
15	1	<i>Amelanchier canadensis</i>	Shadblow Serviceberry	50mm dbh	GOOD	TO BE REMOVED		
16	1	<i>Tilia cordata</i>	Little-Leaf Linden	50mm dbh	POOR	TO BE REMOVED		Leaf scorch
17	1	<i>Tilia cordata</i>	Little-Leaf Linden	50mm dbh	POOR	TO REMAIN		Leaf scorch
18	1	<i>Tilia cordata</i>	Little-Leaf Linden	50mm dbh	POOR	TO REMAIN		Leaf scorch
19	1	<i>Gleditsia triacanthos</i>	Honey Locust	50mm dbh	GOOD	TO REMAIN		
20	1	<i>Gleditsia triacanthos</i>	Honey Locust	50mm dbh	GOOD	TO REMAIN		
21	1	<i>Gleditsia triacanthos</i>	Honey Locust	50mm dbh	POOR	TO REMAIN		
22	1	<i>Gleditsia triacanthos</i>	Honey Locust	50mm dbh	DEAD	TO REMAIN		

- GENERAL NOTES:**
- IT IS THE RESPONSIBILITY OF THE APPROPRIATE CONTRACTOR OR OFFICIAL TO REPORT ANY ERRORS, OMISSIONS OR DISCREPANCIES ON THIS PLAN WITH ACTUAL SITE CONDITIONS TO THE LANDSCAPE ARCHITECT BEFORE PROCEEDING WITH CONSTRUCTION.
 - THE CONTRACTOR IS TO NOTIFY ALL UTILITY COMPANIES AND AUTHORITIES PRIOR TO ANY EXCAVATION AND ASCERTAIN LOCATIONS OF UNDERGROUND SERVICES.
 - THE CONTRACTOR IS TO REINSTATE ALL AREAS AND ITEMS DAMAGED AS A RESULT OF CONSTRUCTION ACTIVITY.
 - THE CONTRACTOR IS TO COMPLY WITH ALL PERTINENT CODES AND BY-LAWS.
 - THE CONTRACTOR IS TO MAINTAIN A POSITIVE SURFACE RUN-OFF THROUGHOUT THE ENTIRE CONSTRUCTION PERIOD.
 - THE LANDSCAPE ARCHITECT IS NOT RESPONSIBLE FOR SUBSURFACE CONDITIONS.
 - THE CONTRACTOR IS TO IDENTIFY ALL EXISTING TREES TO REMAIN ON SITE WITH THE LANDSCAPE ARCHITECT PRIOR TO CONSTRUCTION.
 - THE CONTRACTOR IS TO STAKE THE PROPOSED LOCATION OF ALL PLANT MATERIAL IN CONJUNCTION WITH THE LANDSCAPE ARCHITECT PRIOR TO CONSTRUCTION.
 - MINIMUM DISTANCES FOR SELECTED DECIDUOUS TREES ARE AS FOLLOWS:
 - BUILDING FOUNDATIONS - 7.5M
 - SIDEWALKS - 1.5M
 - PUBLIC STREETS - 2.5M
 - UNDERGROUND INFRASTRUCTURE - 2.0M
 - ALL TREES WITHIN 1M OF UNDERGROUND UTILITY TRENCHES ARE TO BE EXCAVATED BY HAND.
 - REMOVE ALL PROTECTIVE WRAPPING FROM TREE TRUNKS AFTER INSTALLATION.
 - STAKING OF TREES SHALL ONLY BE PERFORMED IF NECESSARY.
 - ENSURE THAT MULCH IS PULLED BACK A MINIMUM DISTANCE OF 75MM FROM BASE OF TREE TRUNK.



LEGAL DESCRIPTION:
BLOCK 6
REGISTERED PLAN 4M-1682
CITY OF OTTAWA
SURVEYED BY ANNIS, O'SULLIVAN, VOLLEBEKK LTD.

PROPOSED PLANT LIST QTY KEY

KEY	QTY	BOTANICAL NAME	COMMON NAME	SIZE	CONDITION	REMARKS
TREES						
CS	1	<i>Picea pungens</i>	Colorado Spruce	2000mm ht.	B&B	Native to S. Ont
HL	2	<i>Gleditsia triacanthos</i>	Honey Locust	50mm ø	B&B	Native
JV	1	<i>Juniperus virginiana</i>	Eastern Red Cedar	2000mm ht.	B&B	Native
SB	4	<i>Amelanchier canadensis</i>	Serviceberry	50mm ø	B&B	Native
SHRUBS						
AH	74	<i>Hydrangea arborescens</i> 'Annabelle'	Bridalwreath Spirea	800 mm ht.	Potted	1200mm o.c.
BB	16	<i>Euonymus alatus</i> 'Compactus'	Burning Bush	600 mm ht.	Potted	1200mm o.c.
CP	9	<i>Syringa vulgaris</i>	Common Purple Lilac	1500 mm ht.	Potted	2000mm o.c.
JH	90	<i>Juniperus horizontalis</i> 'Andorra Compacta'	Compact Andorra Juniper	600 mm spr.	Potted	1200mm o.c.
SF	32	<i>Sorbaria sorbifolia</i> 'Sem'	Sem False Spirea	600 mm ht.	Potted	1000mm o.c.
SS	41	<i>Sorbaria sorbifolia</i>	Ural False Spirea	800 mm ht.	Potted	1200mm o.c.
RA	54	<i>Rhus aromatica</i> 'Gro-Low'	Low-Low Fragrant Sumac	800 mm ht.	Potted	1200mm o.c. Native
RR	24	<i>Rosa rugosa</i>	Rugosa Rose	800 mm ht.	Potted	800mm o.c.
ORNAMENTAL GRASSES AND PERENNIALS						
BL	58	<i>Leymus arenarius</i> 'Blue Dune'	Blue Lyme Grass	250mm pot	Potted	800mm o.c.
KF	82	<i>Calamagrostis</i> 'Karl Foerster'	Feather Reed Grass	250mm pot	Potted	800mm o.c.
OD	84	<i>Calamagrostis</i> 'Overdam'	Overdam Grass	250mm pot	Potted	800mm o.c.

NOTE: ALL PLANT MATERIAL IS PROPOSED ON PRIVATE PROPERTY

CLIENT
Address: 4605 St. Lawrence Ave. #100
Ottawa, Ontario K1J 1S5
Phone Number: (416) 413-8005

CONSULTANTS
ANNIS, O'SULLIVAN, VOLLEBEKK LTD.
14 Cornwall Ave. Suite 100
Ottawa, Ontario K1J 1S5
Phone: (416) 277-0000 Fax: (416) 277-0179
www.aovll.com

ARCHITECTS
NEUF ARCHITECTS
1300 Avenue de la Famille-Côté
Ottawa, Ontario K1C 2C2
Phone Number: (416) 274-2274

ENGINEERS
LAWRENCE ENGINEERING
1210 St. Lawrence Ave. Suite 100
Ottawa, Ontario K1C 2C2
Phone Number: (416) 277-0007

LEGEND

- EXISTING TREE TO REMAIN
- EXISTING TREE TO BE REMOVED
- PROPOSED DECIDUOUS TREE
- PROPOSED CONIFEROUS TREE
- PROPOSED SHRUBS, PERENNIALS AND ORNAMENTAL GRASSES
- PROPOSED SOD
- PROPOSED PRECAST CONCRETE PAVERS TYPE 1
- PROPOSED PRECAST CONCRETE PAVERS TYPE 2
- PROPOSED RIVERSTONE
- PROPOSED TREE PROTECTION FENCE
- 7.5m TREE PLANTING SETBACK AS PER GEOTECHNICAL REQUIREMENTS
- PROPERTY LINE

TREE PLANTING NOTES:

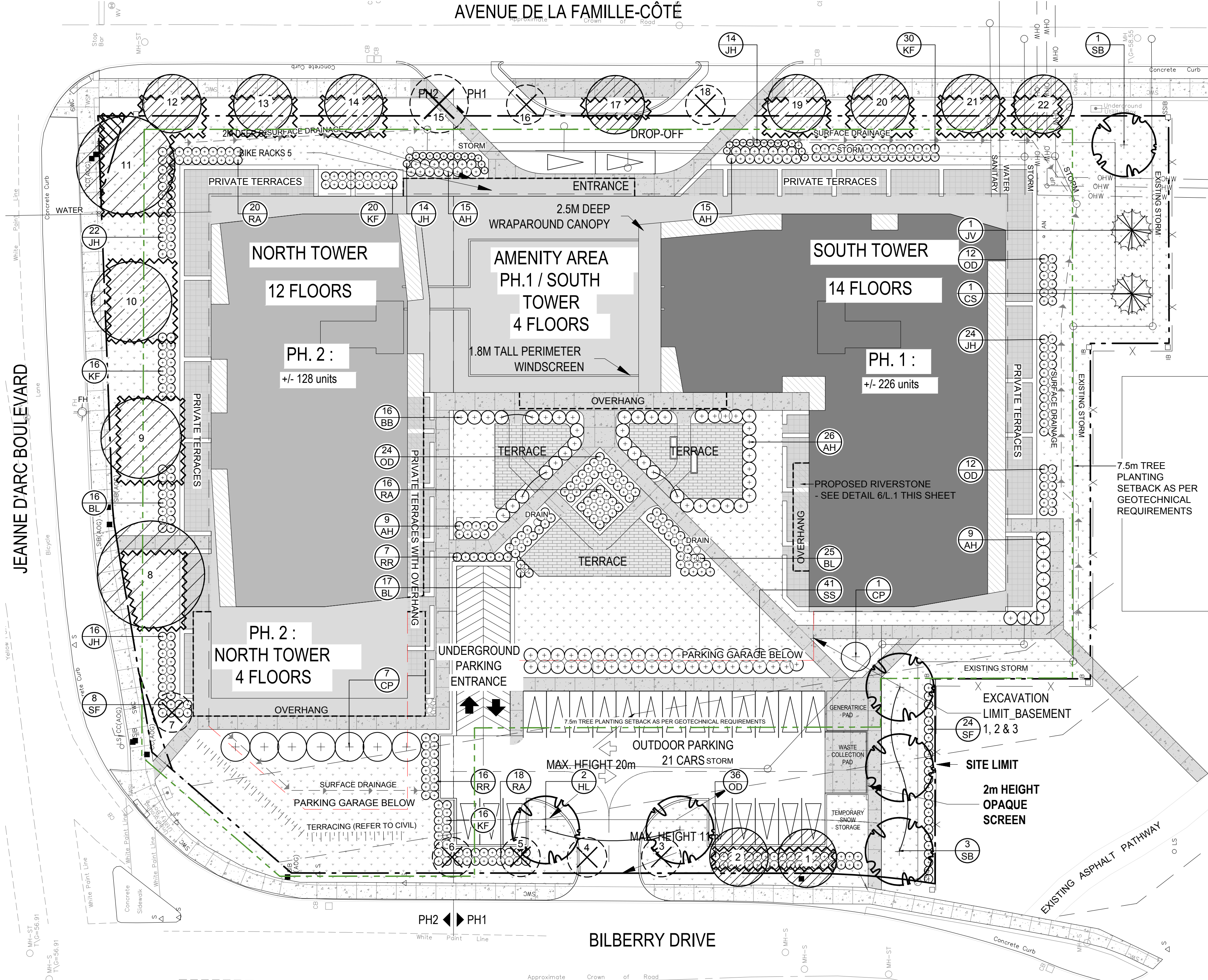
- ALL TREES ARE PROPOSED ON PRIVATE PROPERTY.
- PROPOSED TREES SPACING: MIN 7m O.C.
- ALL TREES PROPOSED WITH A SOIL DEPTH OF 1.5m.
- SOIL VOLUME REQUIREMENTS:

TREE TYPE / SIZE	SINGLE TREE SOIL VOLUME (m³)	MULTIPLE TREE SOIL VOLUME (m³/7m)
Ornamental / columnar	15	9
Small	20	12
Medium / conifer	25	15
Large	30	18

40 YEAR CANOPY CALCULATION:

- 8949m² SITE AREA
- 4 SMALL TREES PROPOSED (7m² ea.)
- 4 MEDIUM DECIDUOUS / CONIFEROUS TREES PROPOSED (79m² ea.)
- 0 LARGE TREES PROPOSED (154m² ea.)
- EXISTING TREE CANOPY COVER TO REMAIN: 407m²
- = 751m² or 8.4% CANOPY COVER

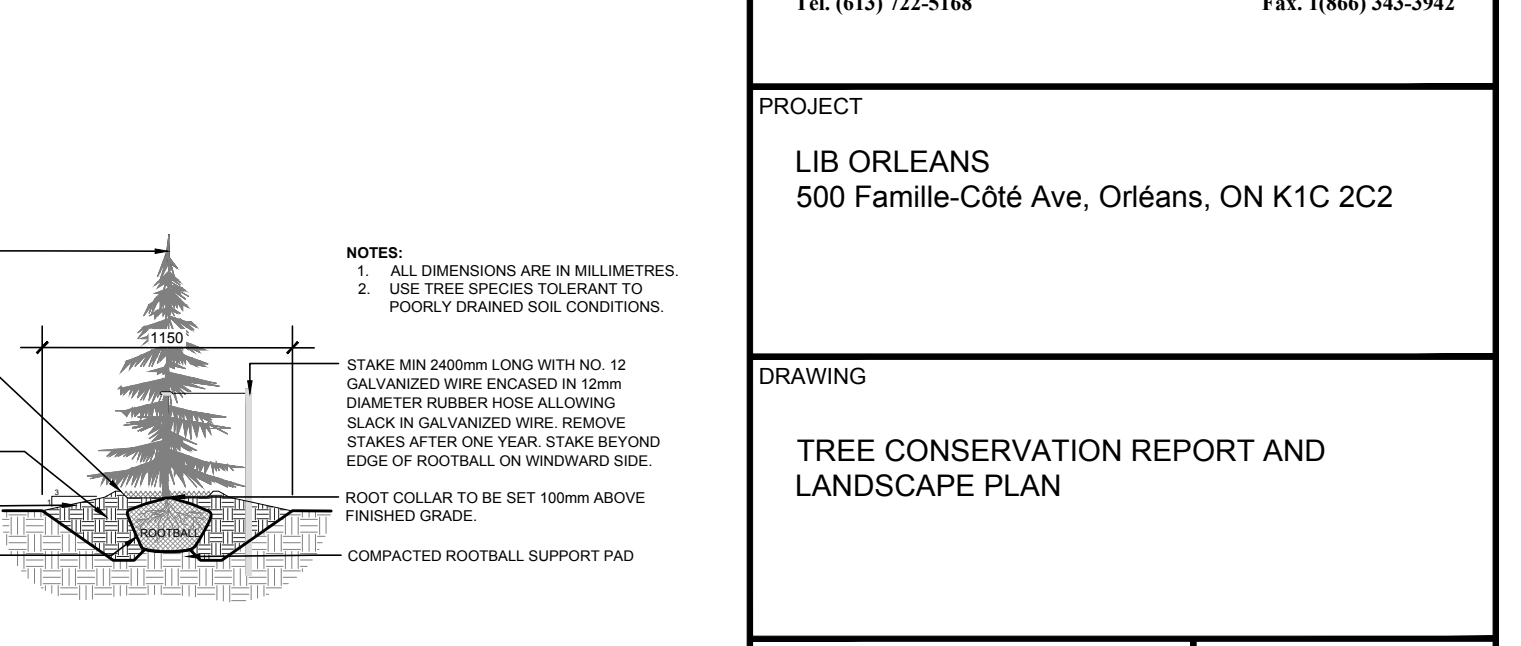
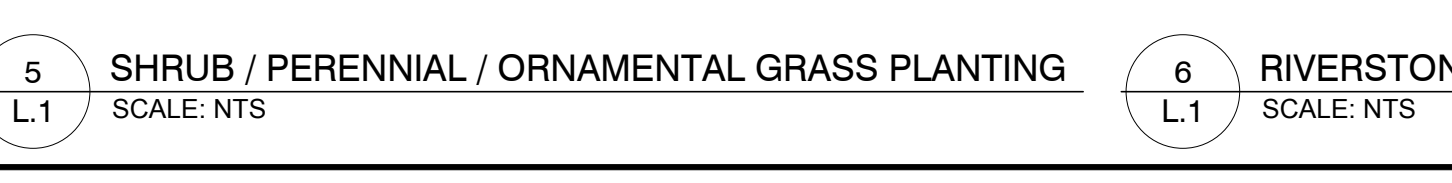
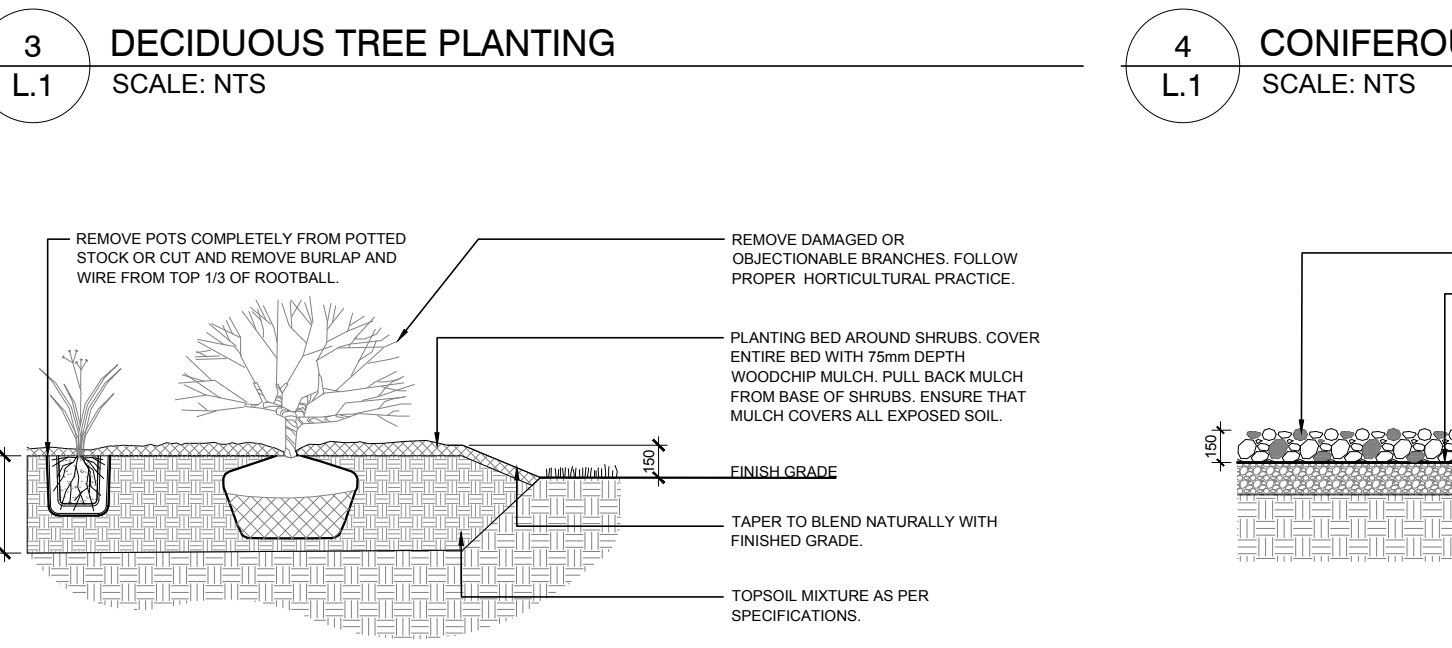
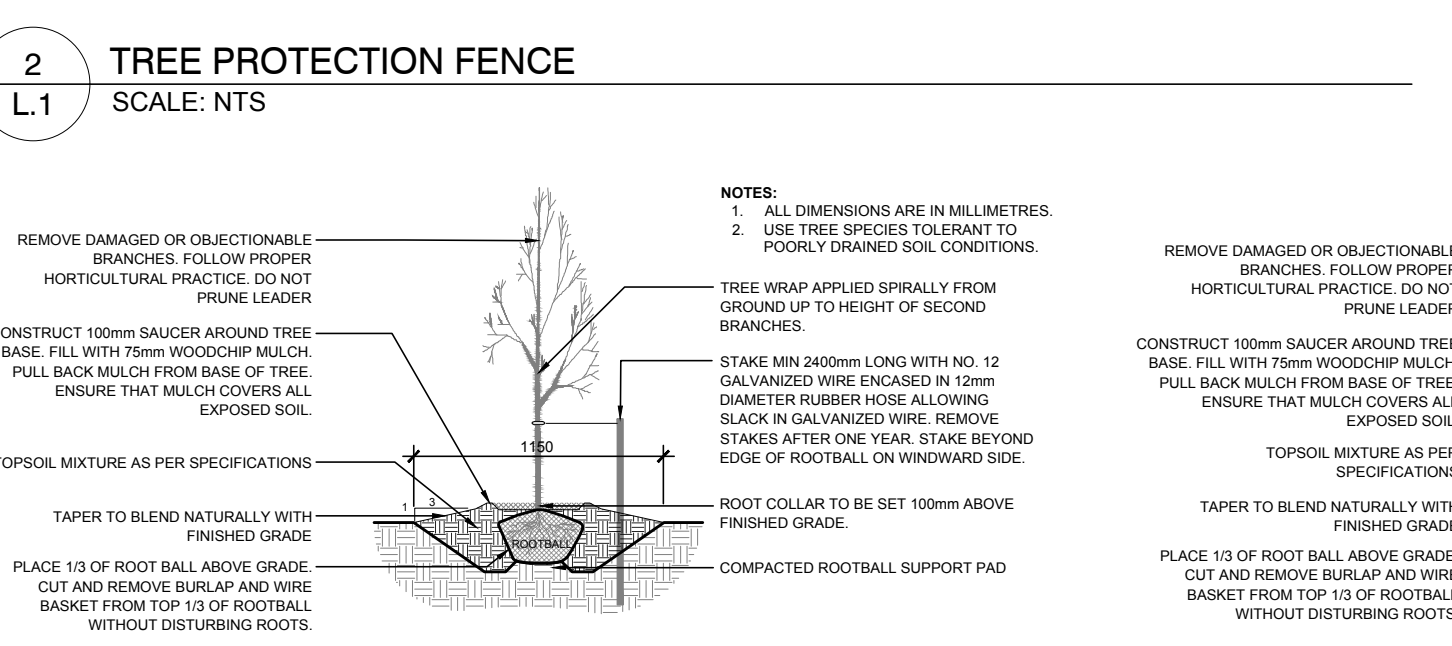
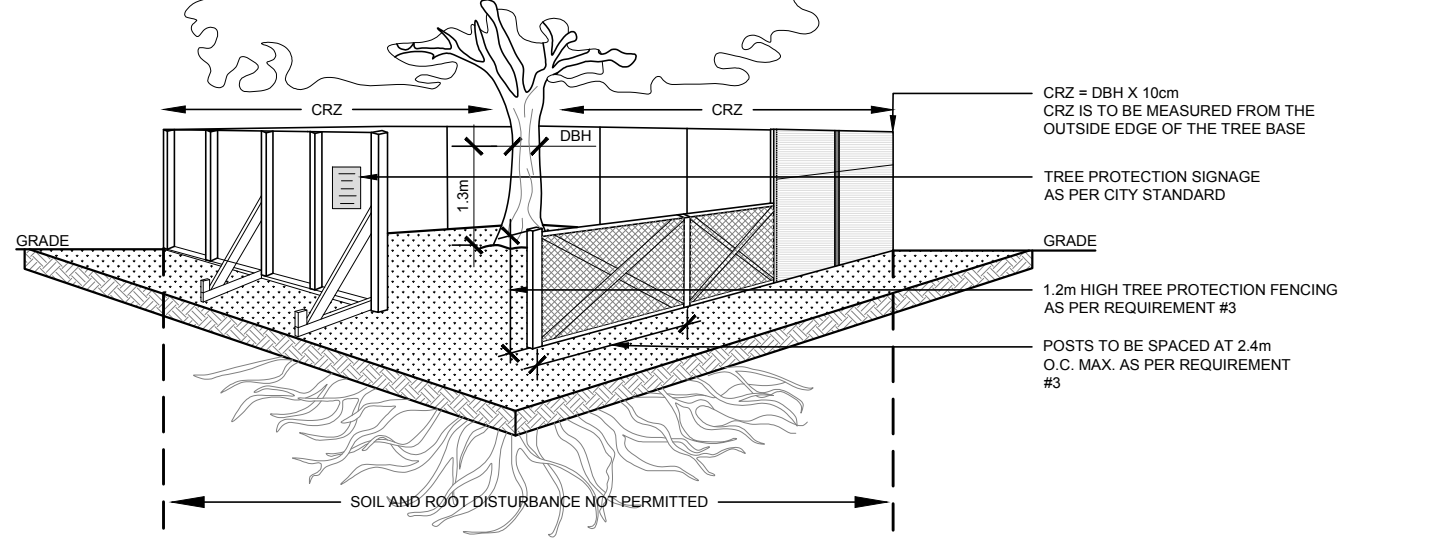
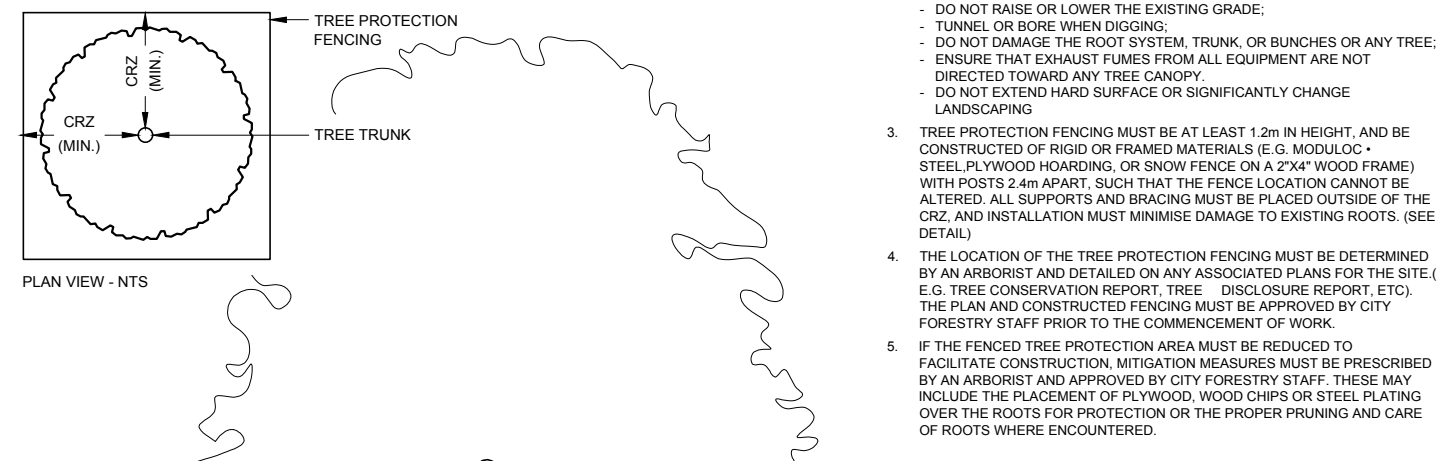
*Large deciduous tree canopy area calculated at 14m radius, medium deciduous trees and evergreen trees at 10m radius, small deciduous trees at 3m radius.



BY-LAWS

ALL CITY-OWNED TREES ARE PROTECTED UNDER THE MUNICIPAL TREES AND NATURAL AREAS PROTECTION BY-LAW (2005-279) WITHIN THE URBAN AREA.

PRIVATELY OWNED TREES GREATER THAN 200mm IN DIAMETER ON LOTS 1 HECTARE IN SIZE OR LESS, AND TREES GREATER THAN 100mm IN DIAMETER ON LOTS GREATER THAN 1 HECTARE, ARE PROTECTED UNDER THE URBAN TREE CONSERVATION BY-LAW (2005-200).



1 TREE CONSERVATION REPORT AND LANDSCAPE PLAN
SCALE: 1:300

JAMES B. LENNOX & ASSOCIATES INC. LANDSCAPE ARCHITECTS
3332 CARLING AVE. OTTAWA, ONTARIO K1C 1S6
Tel: (416) 732-5168 Fax: (416) 343-3942

PROJECT
LIB ORLEANS
500 Famille-Côté Ave, Orléans, ON K1C 2C2

DRAWING
TREE CONSERVATION REPORT AND LANDSCAPE PLAN

SCALE
AS SHOWN

START DATE
SEPTEMBER, 2025

PROJECT NO.
25MIS2550

DRAWING NO.
L.1

PLOT SIZE ARCH-D