

BLOCK 6
REGISTERED PLAN 4M-1682
CITY OF OTTAWA

Surveyed by Annis, O'Sullivan, Vollebek Ltd.

Scale 1:300



Metric
DISTANCES AND COORDINATES SHOWN ON THIS PLAN
ARE IN METRES AND CAN BE CONVERTED TO FEET BY
DIVIDING BY 0.3048.

Surveyor's Certificate

- I CERTIFY THAT:
1. This survey and plan are correct and in accordance with the Surveys Act, the Surveyors Act and the regulations made under them.
 2. The survey was completed on the 19th day of August, 2025.

Date: Sept 12, 2025

T. Hartwick
Ontario Land Surveyor

Notes & Legend

- Survey Monument Found
- Survey Monument Planted
- SIB Standard Iron Bar
- SSIB Short Standard Iron Bar
- IB Iron Bar
- CC Cut Cross
- (AOG) Annis, O'Sullivan, Vollebek Ltd.
- (PI) Registered Plan 4M-1682
- (P2) Registered Plan 4M-206
- (P3) Plan 4R-16870
- MH-ST Maintenance Hole (Storm Sewer)
- MH-S Maintenance Hole (Sanitary)
- MH-T Maintenance Hole (Traffic)
- MH Maintenance Hole (Unidentified)
- MH-H Maintenance Hole (Unidentified)
- VC Valve Chamber (Watermain)
- OHW Overhead Wires
- UP Utility Pole
- AN Anchor
- LS Light Standard
- CB Catch Basin
- FH Fire Hydrant
- WV Water Valve
- T/G Top of Grate
- △ S Sign
- CLF Chain Link Fence
- SWA Asphalt Sidewalk
- SWC Concrete Sidewalk
- M-W Monitoring Well
- Diameter
- 65.00 Location of Elevations
- 65.00 Top of Concrete Curb Elevation
- CL Centreline
- Property Line
- Deciduous Tree

ASSOCIATION OF ONTARIO
LAND SURVEYORS
PLAN SUBMISSION FORM
V-110937

THIS PLAN IS NOT VALID UNLESS
IT IS AN EMBOSSED ORIGINAL
COPY ISSUED BY THE SURVEYOR
in accordance with
Regulation 1026, Section 29 (3)

SITE AREA = 8947.0 m²

Distances shown on this plan are ground distances and can be converted to grid distances by multiplying by the combined scale factor of 0.999963.

Bearings are grid, derived from Easterly limit of Block 1 Plan 4M-206 shown to be N21°43'00"W and are referred to the Central Meridian of MTM Zone 9 (76°30' West Longitude) NAD-83 (original).

Coordinate values are to urban accuracy in accordance with O. Reg. 216/10.

01919980184 Northing 5040610.16 Easting 384736.56
0191998434761 Northing 5036178.12 Easting 372436.11

Caution: Coordinates cannot, in themselves, be used to re-establish corners or boundaries shown on this plan.

ELEVATION NOTES

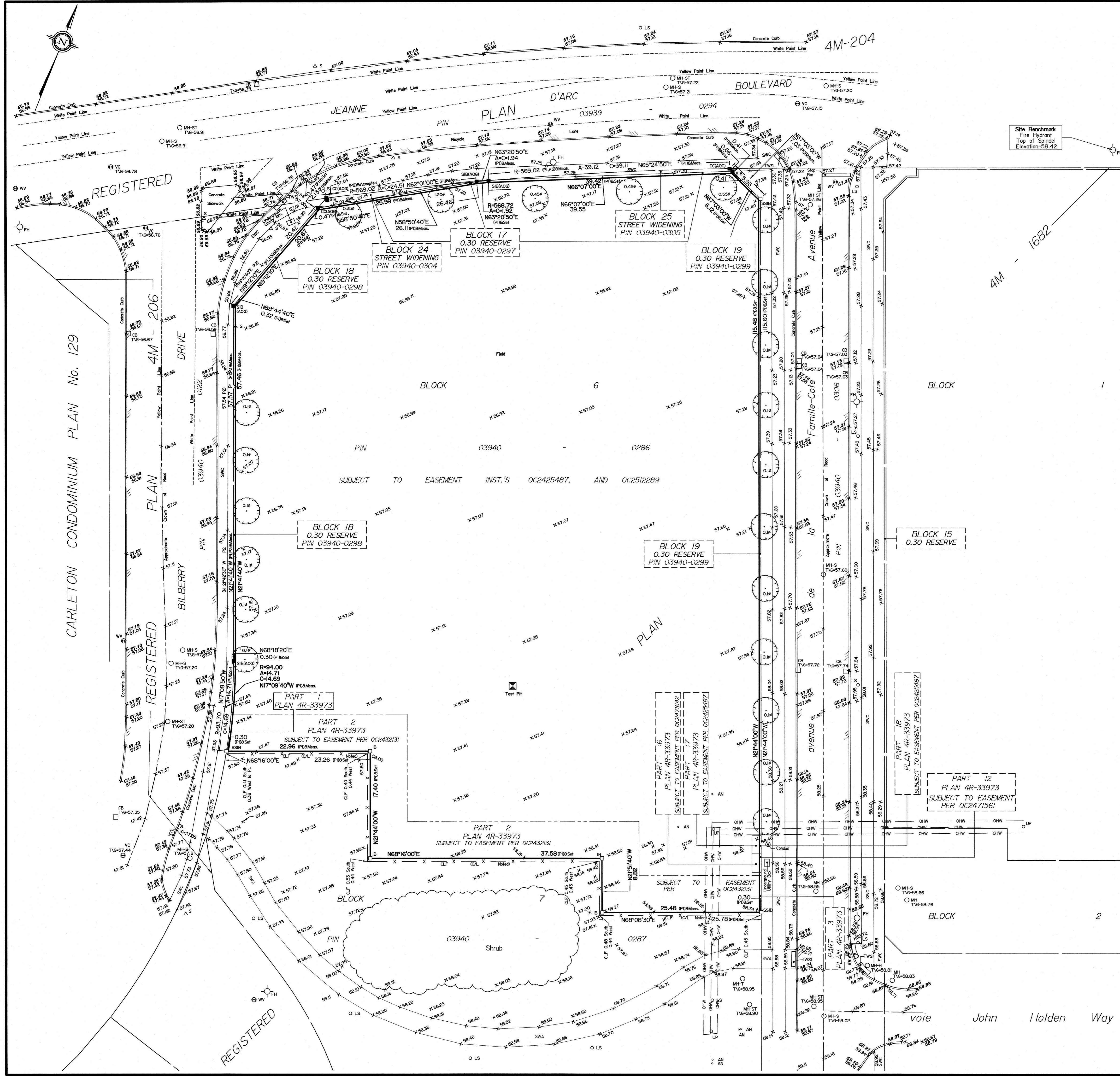
1. Elevations shown are geodetic and are referred to the CGVD28 geodetic datum.
2. It is the responsibility of the user of this information to verify that the job benchmark has not been altered or disturbed and that its relative elevation and description agrees with the information shown on this drawing.

UTILITY NOTES

1. This drawing cannot be accepted as acknowledging all of the utilities and it will be the responsibility of the user to contact the respective utility authorities for confirmation.
2. Only visible surface utilities were located.
3. Underground utility data derived from City of Ottawa utility sheet reference
4. Sanitary and storm sewer grades and inverts were derived from
5. A field location of underground plant by the pertinent utility authority is mandatory before any work involving breaking ground, probing, excavating etc.

© Annis, O'Sullivan, Vollebek Ltd. 2025. THIS PLAN IS PROTECTED BY COPYRIGHT!
ANNIS, O'SULLIVAN, VOLLEBEK LTD.
14 Concourse Gate, Suite 500
Nepean, Ont. K2E 7S6
Phone: (613) 727-0850 / Fax: (613) 727-1079
Email: Nepean@annisov.com

Ontario Land Surveyors
Job No. 2610-29, Bolingo Development Inc. Bk. 6 4M-1682, O. 03 192



Y:\2025\03\10-25_500 Bolingo_300 Penite_Cat_Trao_TMO\mwp\p\0310 25 Bolingo Development Inc Bk 6 4M-1682 O 03.dwg