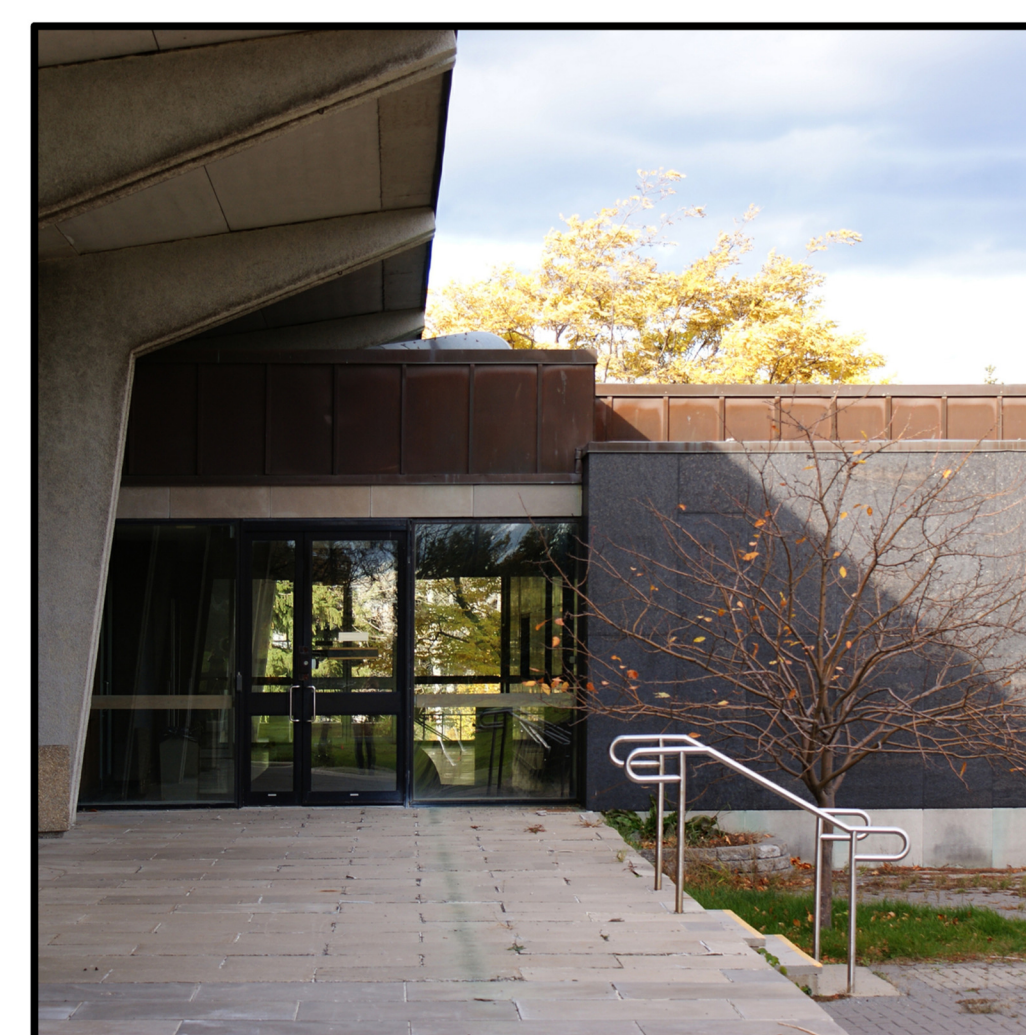




FADE FACADE



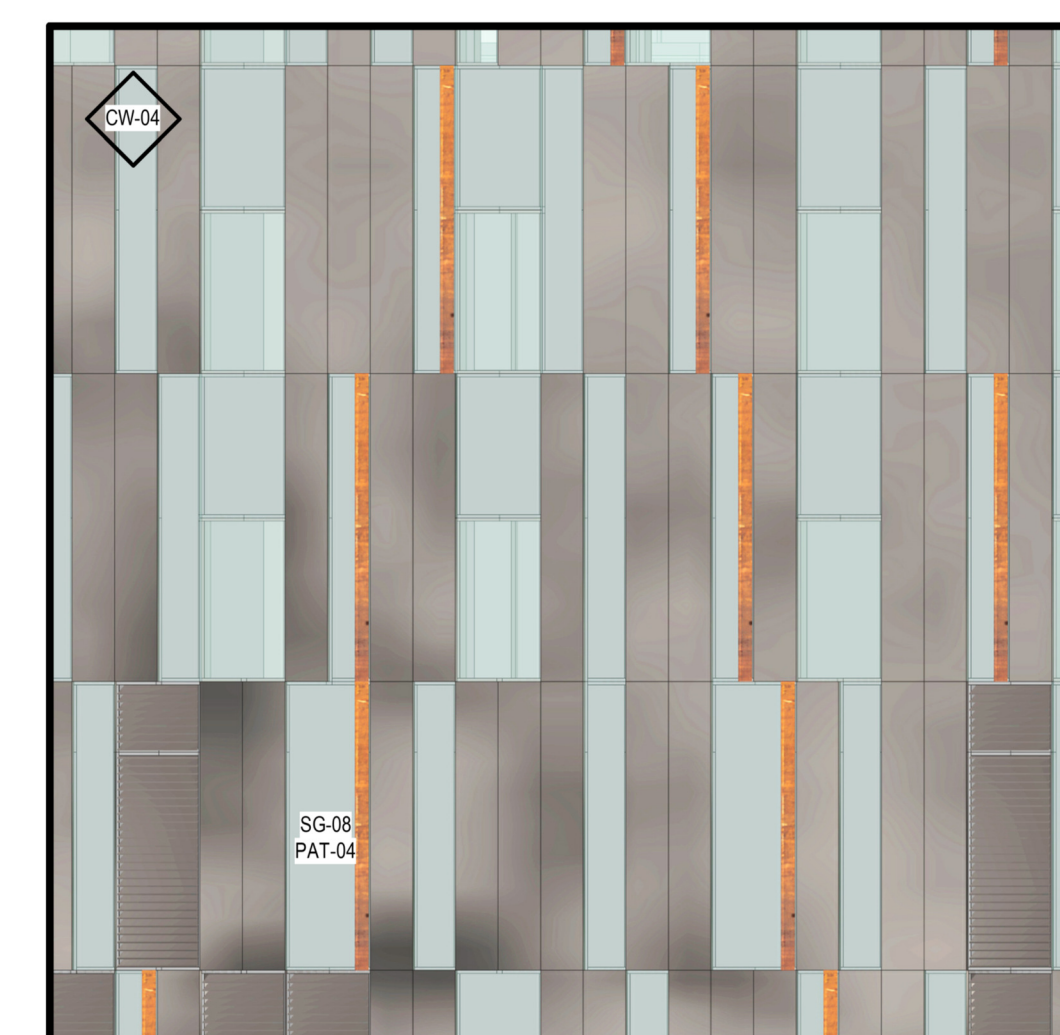
WEST ANNEX: SIR JOHN CARLING BLDG, ON



LAMINAM - I NATURAL PIETRA GREY POLISHED



ROLEX TOWER; EXTERIOR FACADE



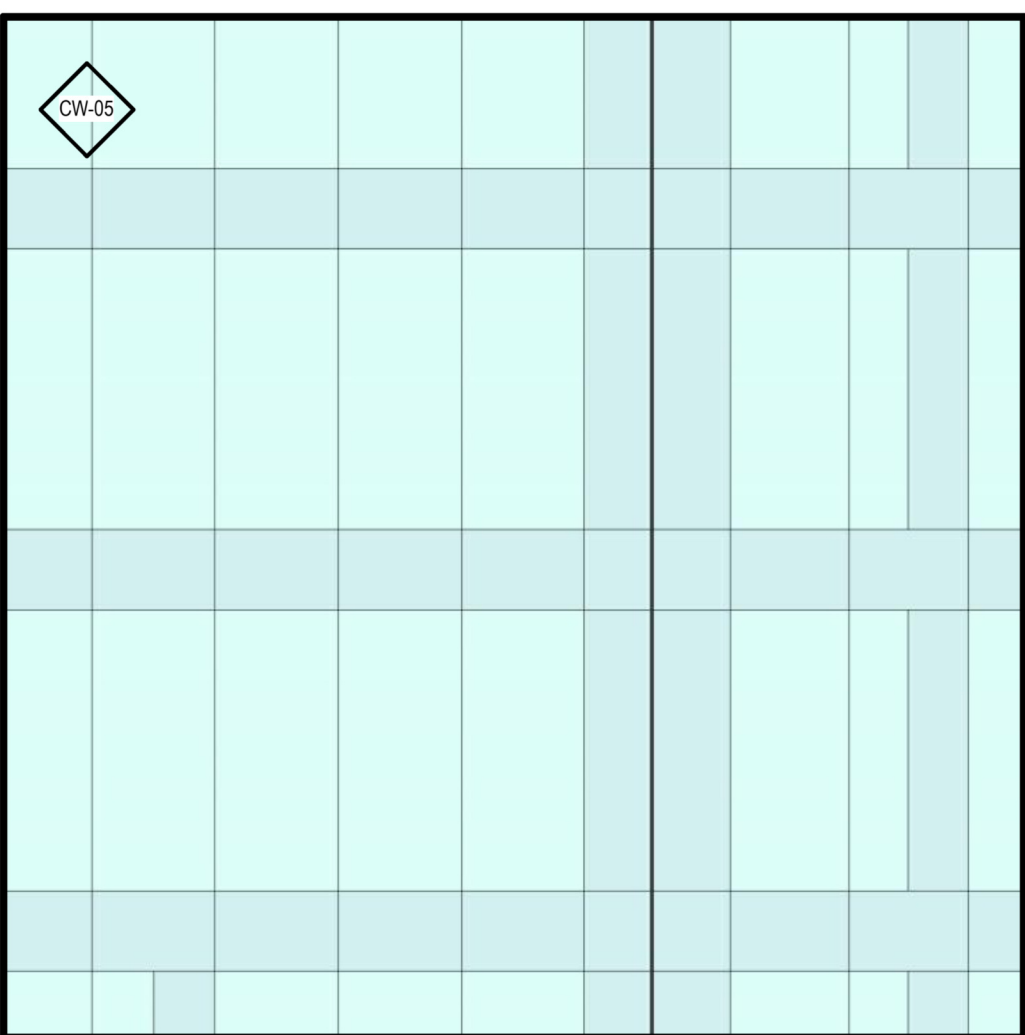
SPANDREL, VISION GLASS, PORCELAIN PANELS AND LOUVRES



ESKENAZI HOSPITAL, IN



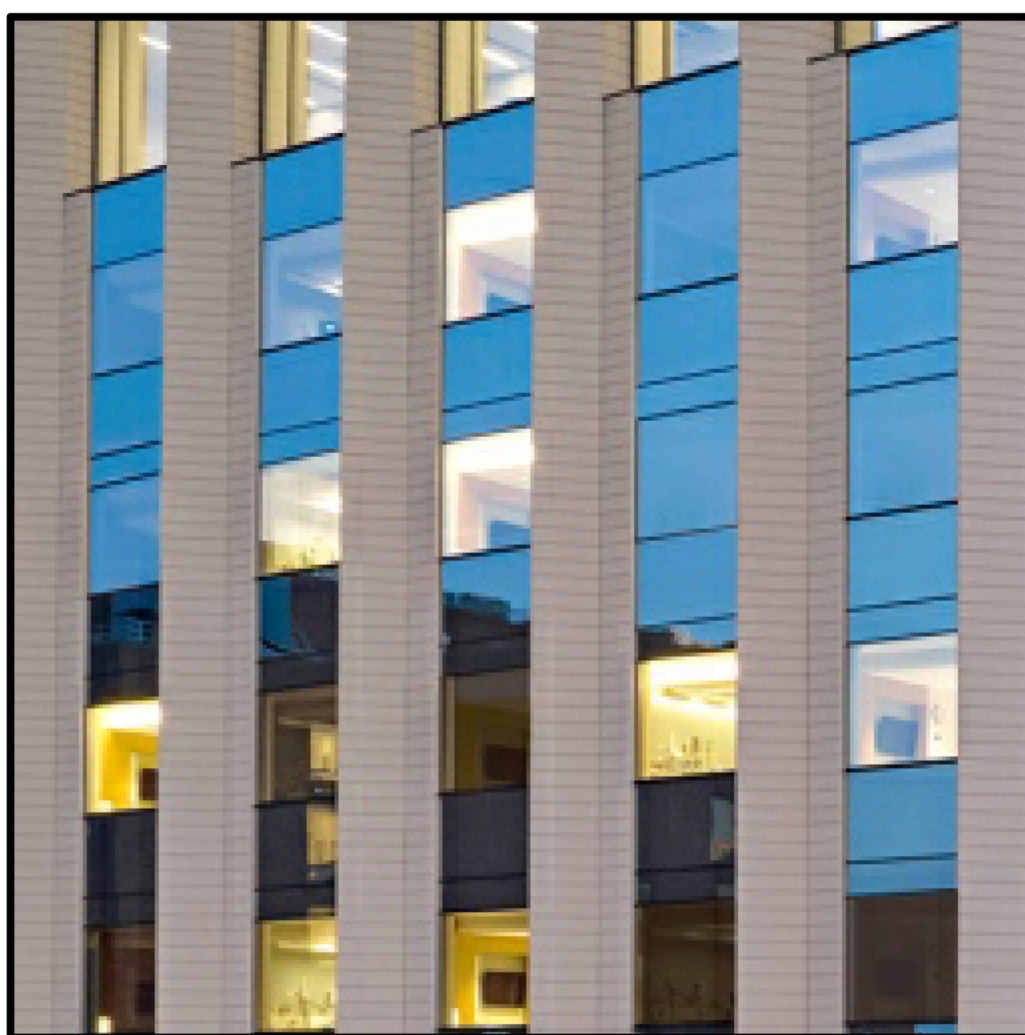
ADVOCATE CHRIST MEDICAL CENTRE, IL



WALL TYPE - CW-05 "HINGE"



MECHANICAL LOUVRES



ELECTROCHROMIC GLAZING (ECG)



END FACADE



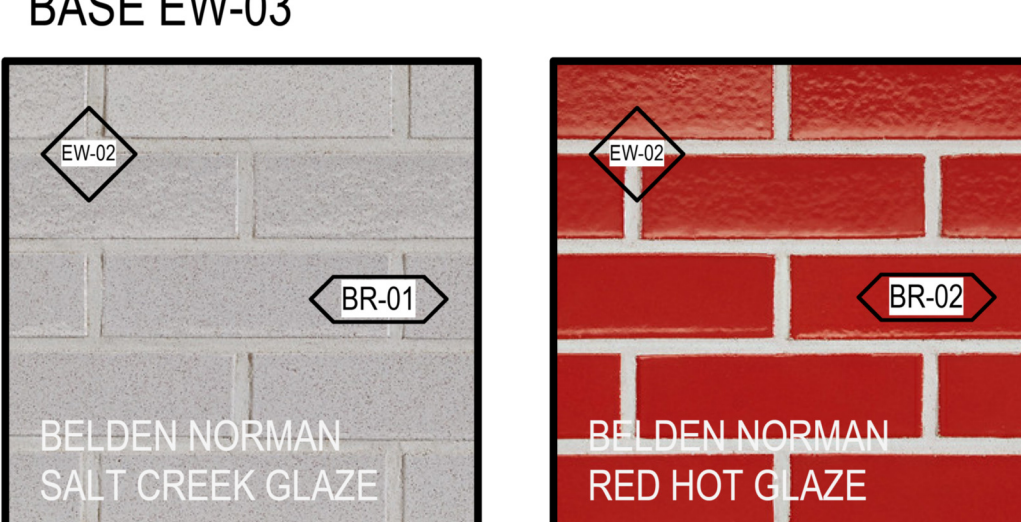
WEST ANNEX: SIR JOHN CARLING BLDG, ON



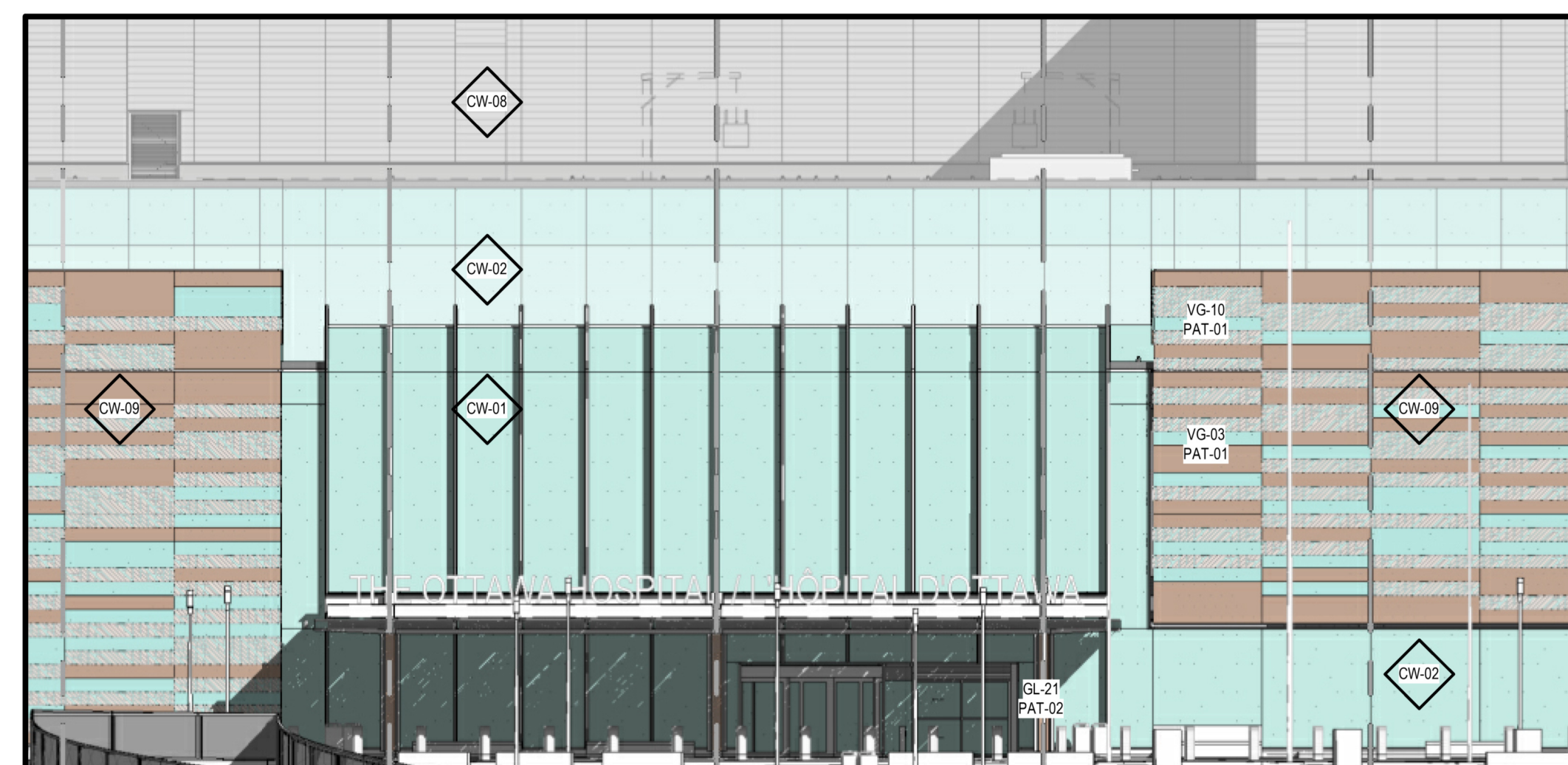
UNIVERSITY OF VIRGINIA HOSPITAL EXPANSION, VA



BRAMPTON BRICK - ARTISE 2 STONE IN CHAMPAGNE



ARCHITECTURAL BRICK - NORMAN IN EMERGENCY GARAGE



MAIN ENTRANCE FACADE



THE KLARMAN BUILDING AT BIDMC, MA



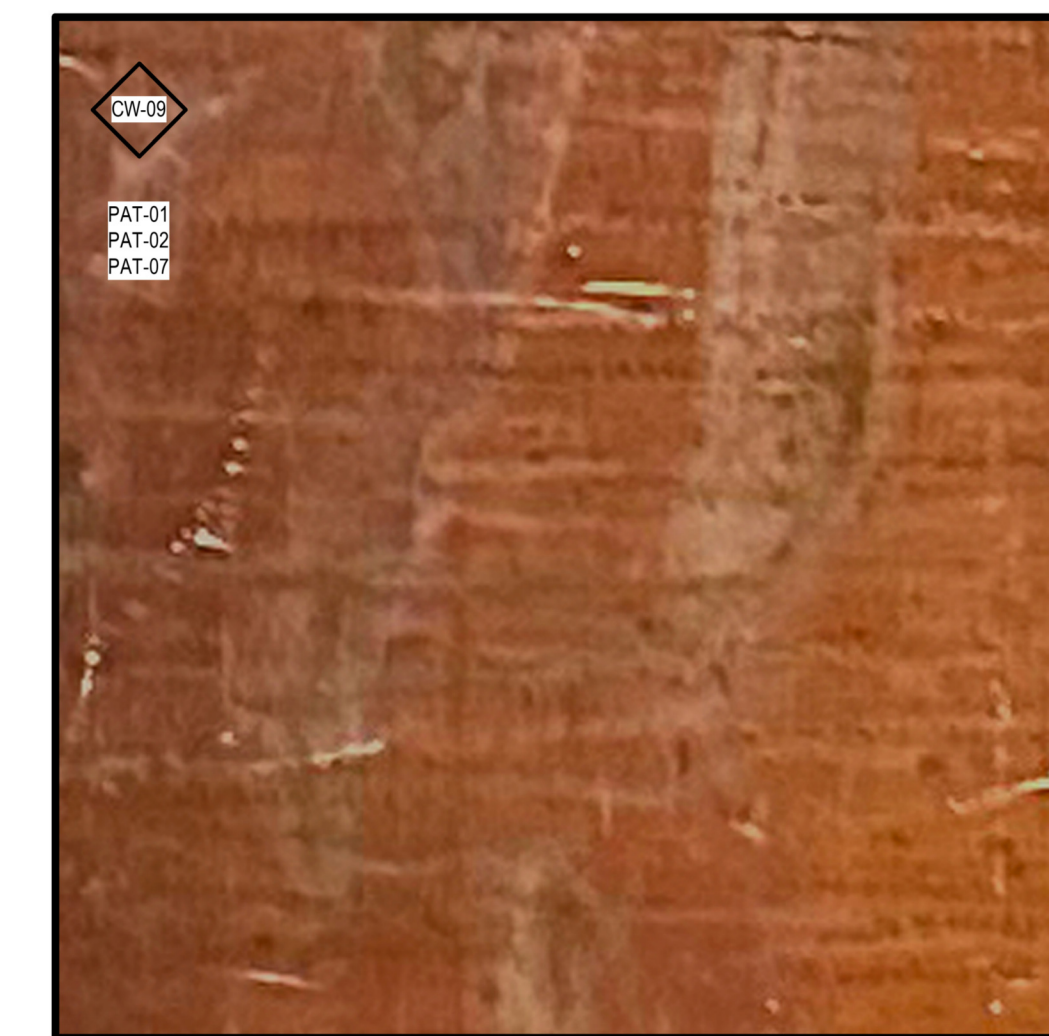
CHUM, QC



SACRE COEUR DE MONTREAL, QC



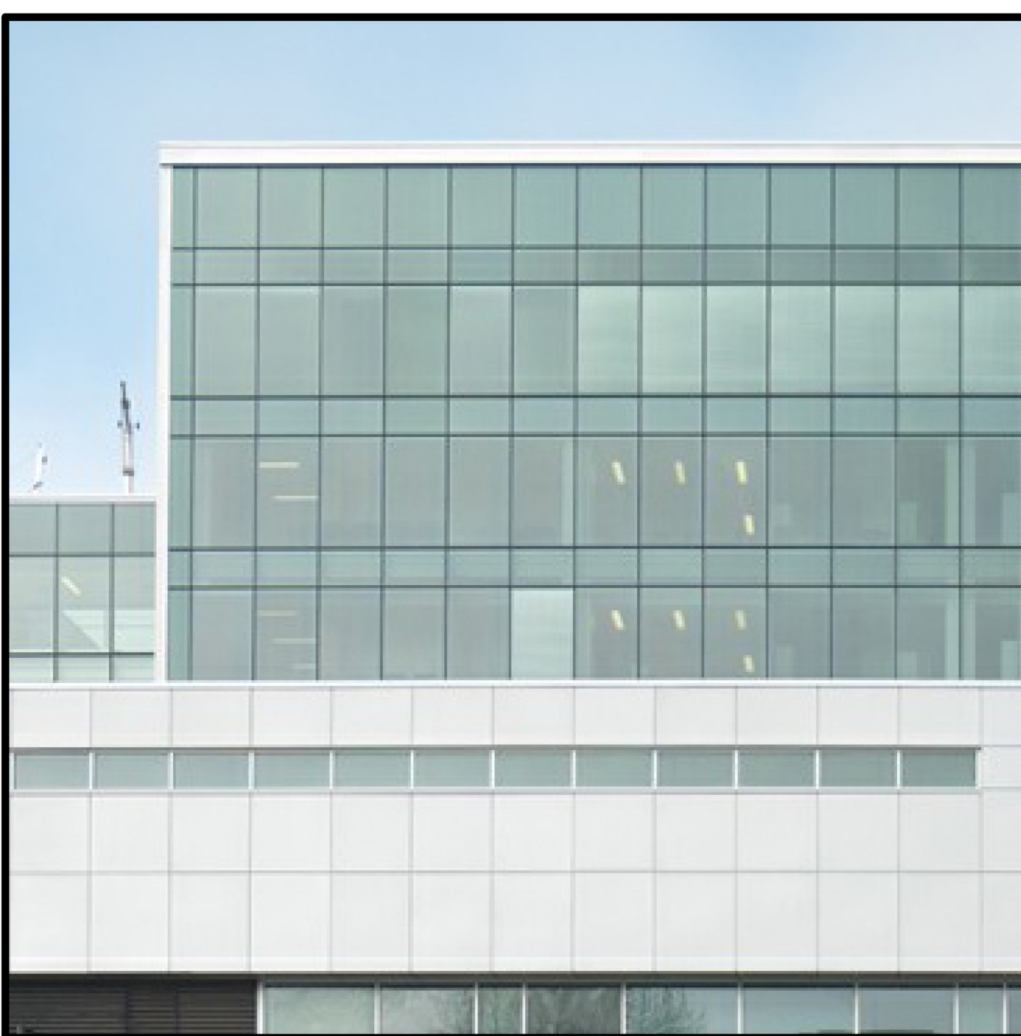
CEDAR PATTERN - DIGITAL CERAMIC INK



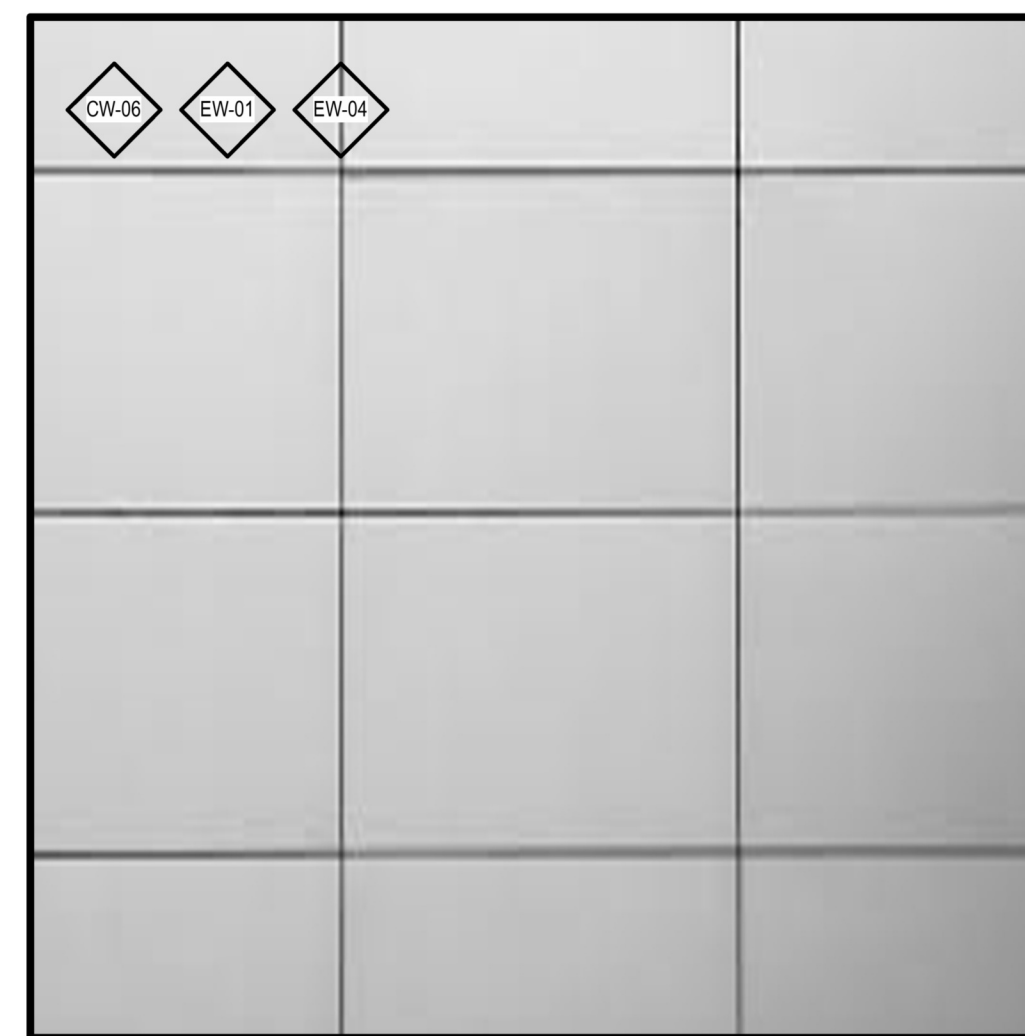
DIGITAL CERAMIC INK



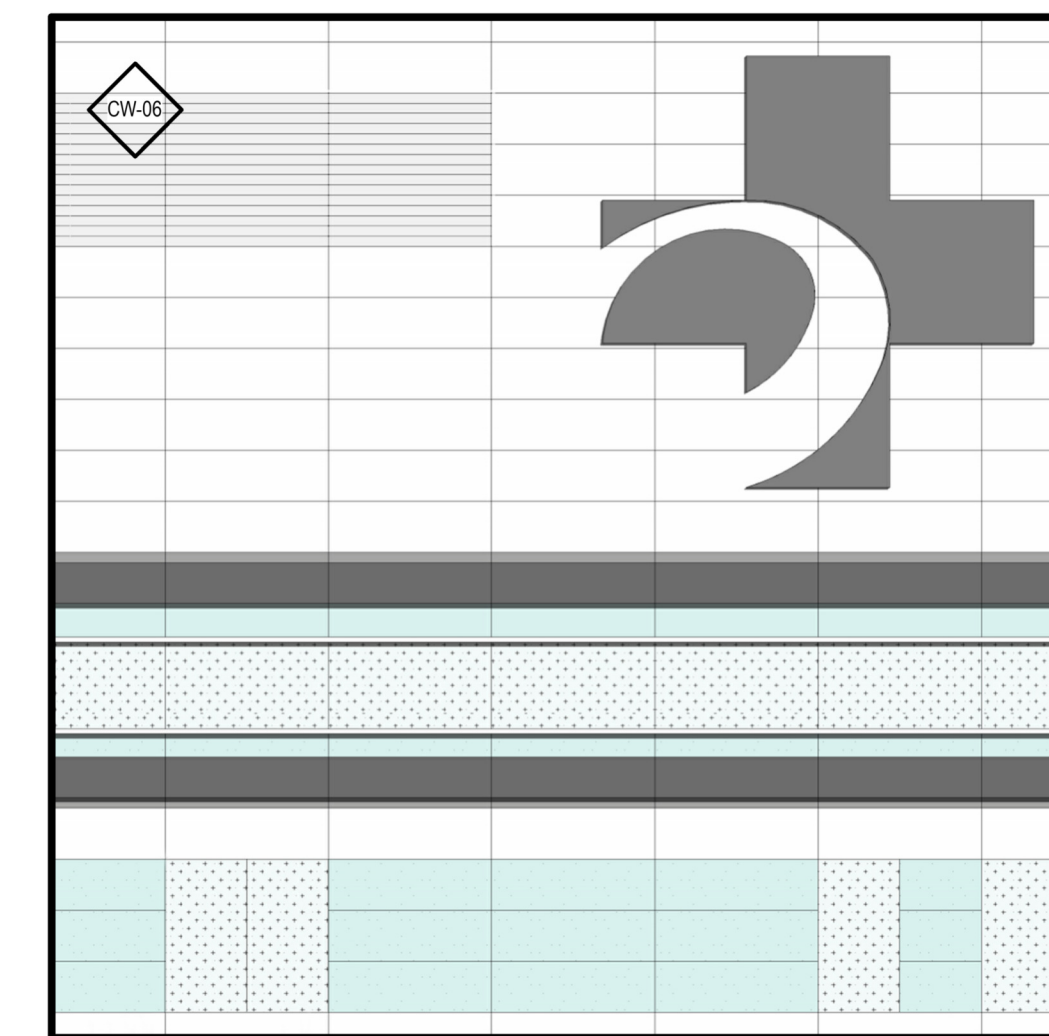
MAIN ENTRANCE & PAVILION



CHU SAINTE-JUSTINE, QC



ALUMINUM PANELS



WALL TYPE CW-06

NOTE:  
1. RENDERINGS EXHIBIT THE EXPECTED OVERALL QUALITY OF DESIGN RELATED TO ARCHITECTURAL LANGUAGE, MATERIAL USAGE, SPATIAL DESIGN AND LANDSCAPE. RENDERINGS ARE NOT INDICATIVE OF ALL REQUIRED ELEMENTS, INCLUDING, BUT NOT LIMITED TO, FENCING, SIGNAGE, PASSENGER AMENITIES, BIRD FRIENDLY DESIGN REQUIREMENTS, FURNITURE ETC.  
2. RENDERINGS SHOW PLANTING AT MATURING, NOT SHOWING SIZE AT INSTALLATION.  
3. FOR FURTHER INFORMATION, VARIATIONS OF DIGITAL CERAMIC INK FRIT PATTERNS - REFER TO A0-021

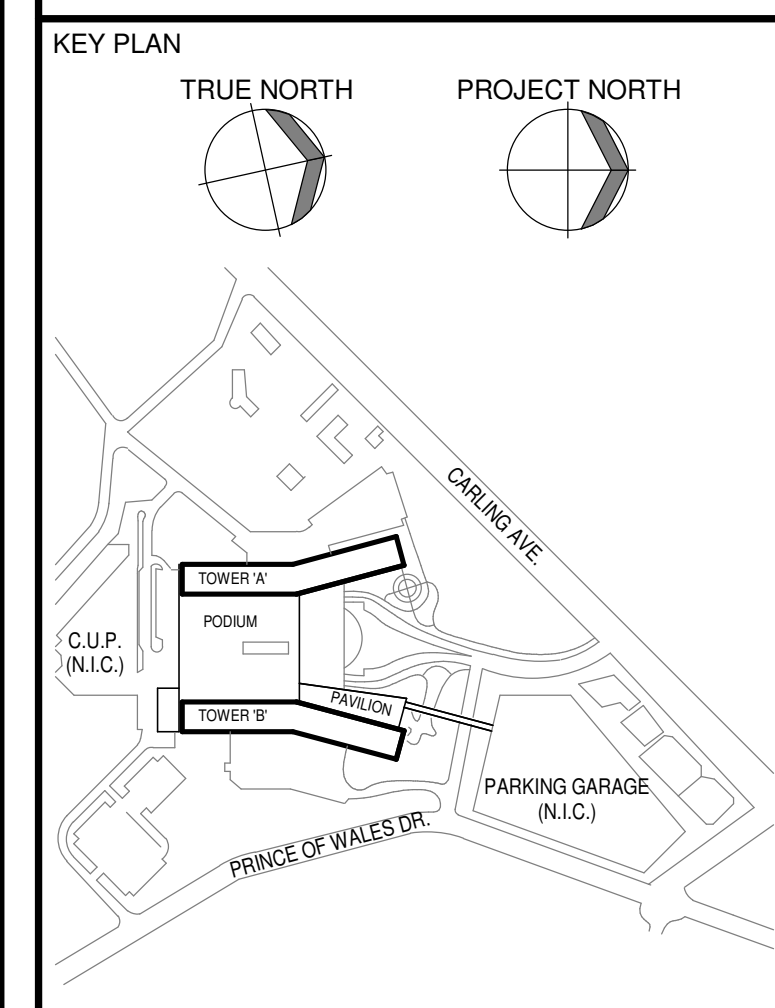


Table with 2 columns: REVISIONS, DATE. It contains a header for 'NOT FOR CONSTRUCTION' and a table for tracking revisions.

02 SITE PLAN CONTROL RESUBMISSION 2020-01-13  
01 95% DD SUBMISSION 2020-09-19

REVISIONS

DRAWING STATUS

NOT FOR CONSTRUCTION

DISCREPANCIES MUST BE REPORTED IMMEDIATELY TO THE ARCHITECT BEFORE PROCEEDING. ONLY DIMENSIONS SHOWN ON THIS DRAWING ARE TO BE USED. CONTRACTORS MUST CHECK ALL DIMENSIONS ON SITE. THIS DRAWING IS PROTECTED BY COPYRIGHT.

ALL DIMENSIONS ARE SHOWN IN METRIC.

AUTHOR

PROJECT TEAM

DESIGN-BUILDER POLIED A JOINT VENTURE  
PARON ARCHITECTS LIMITED  
JOOH LAMARIE PRATTE ARCHITECTS  
ADAMSON ASSOCIATE ARCHITECTS  
886 ARCHITECTS INC.

STRUCTURAL STEPHENSON ENGINEERING LTD.  
BOULHLETTE PARIBEAU INC.

MECHANICAL HH ANGUS & ASSOCIATES LTD.  
CROSBY ENGINEERING LTD.

ELECTRICAL MCELVEY & SWANN INTERNATIONAL INC.  
WSP SANGA INC.

CIVIL VERTICOS DESIGN INC.  
PWP LANDSCAPE ARCHITECTURE

BUILDING CODE UMG BUILDING CODE CONSULTANTS LTD.

AUTHOR PROJECT NO.  
2233-00

STAMP

DRAWING TITLE  
MATERIAL SAMPLE BOARD

DRAWN AAA-PT CHECKED DK  
SCALE AT 4" x 6" DATE 19 SEP 2025  
NTS GRAPHIC SCALE

DRAWING NO. A0-020 REV. NO. 02