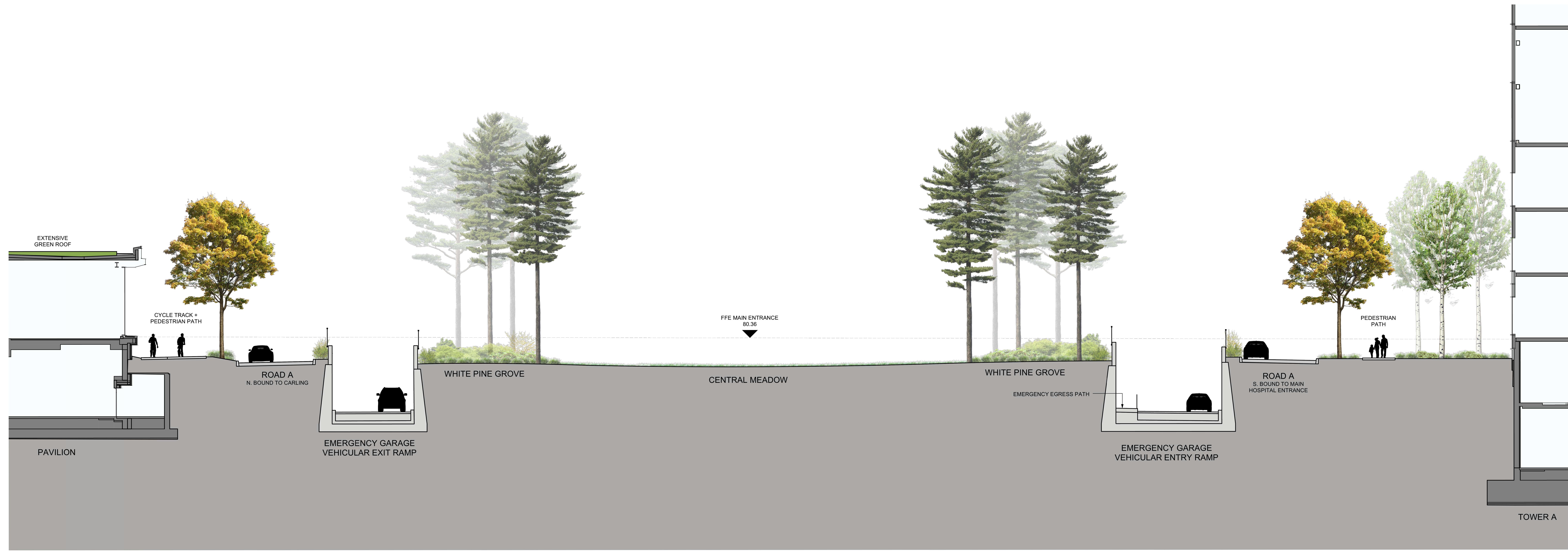


2 MAIN ENTRY PLAZA AND OVERLOOK
SCALE 1:100 0 1 2 3 4 5m SECTION



1 ROAD A AT EMERGENCY GARAGE RAMP
SCALE 1:100 0 1 2 3 4 5m SECTION

PROJECT
**THE OTTAWA HOSPITAL
NEW CAMPUS
DEVELOPMENT -
PHASE 4 MAIN HOSPITAL
BUILDING**
900 CARLING AVE. OTTAWA ONTARIO

CLIENT
The Ottawa Hospital | L'Hôpital d'Ottawa

Infrastructure Ontario

PCL CONSTRUCTION | EllisDon

CLIENT PROJECT NO. 1070002

KEY PLAN

THIS DRAWING TO BE PRINTED IN COLOUR

06	SITE PLAN CONTROL, RESUBMISSION	2025-01-13
05	95% DD SUBMISSION	2025-06-19
04	SITE PLAN CONTROL, RESUBMISSION	2025-08-05
03	95% DD SUBMISSION	2025-06-05
02	35% DD SUBMISSION	2025-01-29
01	ACFOR READINESS	2025-01-09
00	ISSUED	DATE

REVISIONS

DRAWING STATUS
NOT FOR CONSTRUCTION
DISCREPANCIES MUST BE REPORTED IMMEDIATELY TO THE ARCHITECT BEFORE PROCEEDING.
ONLY FIGURED DIMENSIONS ARE TO BE USED. CONTRACTORS MUST CHECK ALL DIMENSIONS ON SITE. THIS DRAWING IS PROTECTED BY COPYRIGHT.
ALL DIMENSIONS ARE SHOWN IN METRIC.

AUTHOR
PWP

PROJECT TEAM
DESIGN/BUILDER: PCL/ED JOINT VENTURE
ARCHITECTURAL: PARRON ARCHITECTS LIMITED, ZOOPLANS/ARTE PRATTE ARCHITECTES, ADAMSON ASSOCIATE ARCHITECTS, 888 ARCHITECTS INC.
STRUCTURAL: STEPHENSON ENGINEERING LTD, BOUTHILLETTE PARIZEAU INC.
MECHANICAL: HJ ANGLUS & ASSOCIATES LTD, CROSSEY ENGINEERING LTD.
ELECTRICAL: KELVEY & BIRN INTERNATIONAL INC.
CIVIL: HEP SWAIN INC.
LANDSCAPE: HERTZOG & NEUBERGER INC., PWP LANDSCAPE ARCHITECTURE
BUILDING CODE: UMCG BUILDING CODE CONSULTANTS LTD.

AUTHOR PROJECT NO. PCL2301_C

STAMP

DRAWING TITLE
SITE SECTIONS

DRAWN	CHECKED
SCALE AT 40° x 60°	DATE
AS NOTED	06-JAN-2025
GRAPHIC SCALE	AS NOTED
DRAWING NO.	REV NO.
L15-104	06

SECTIONS ARE FOR ILLUSTRATIVE REFERENCE ONLY.