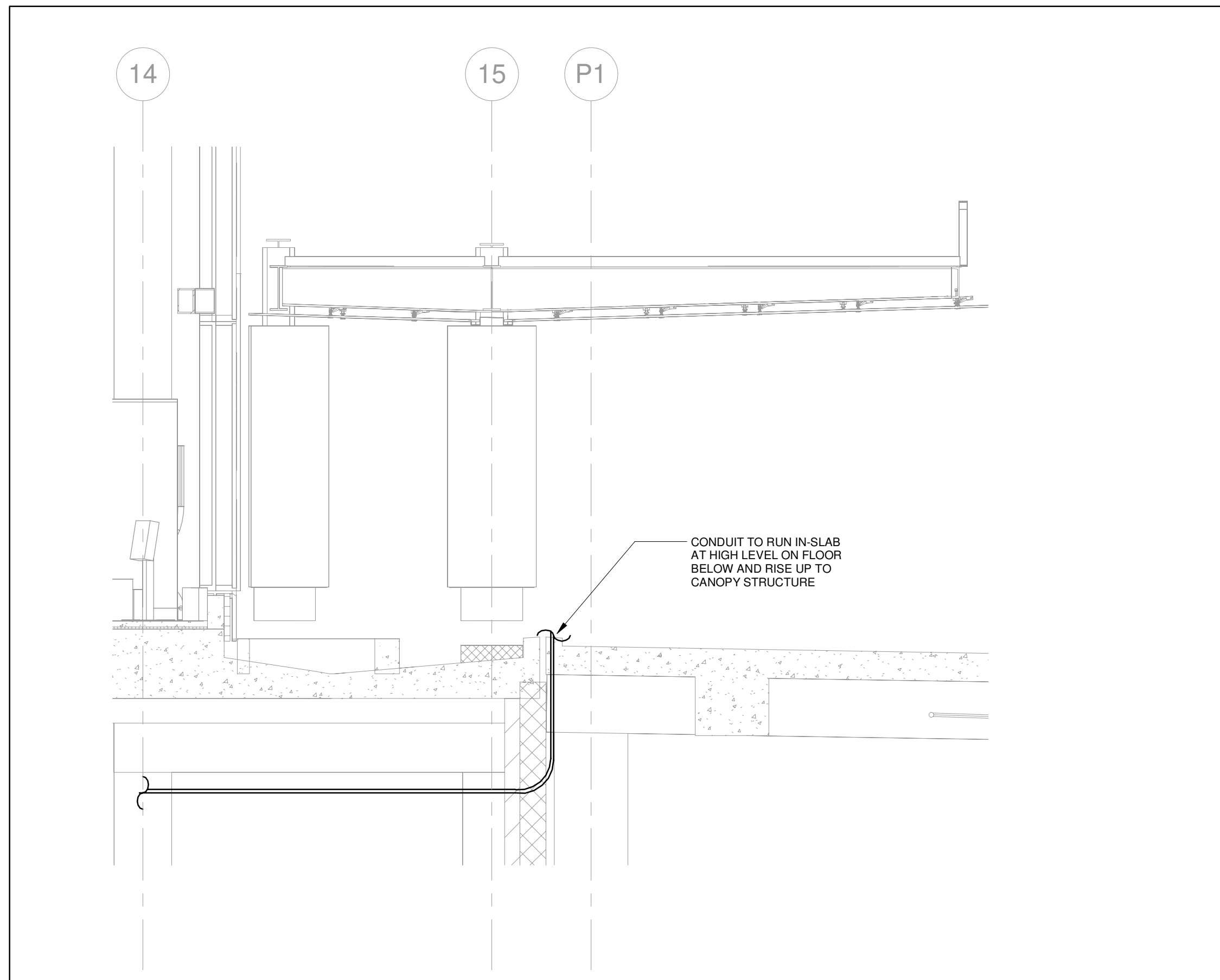
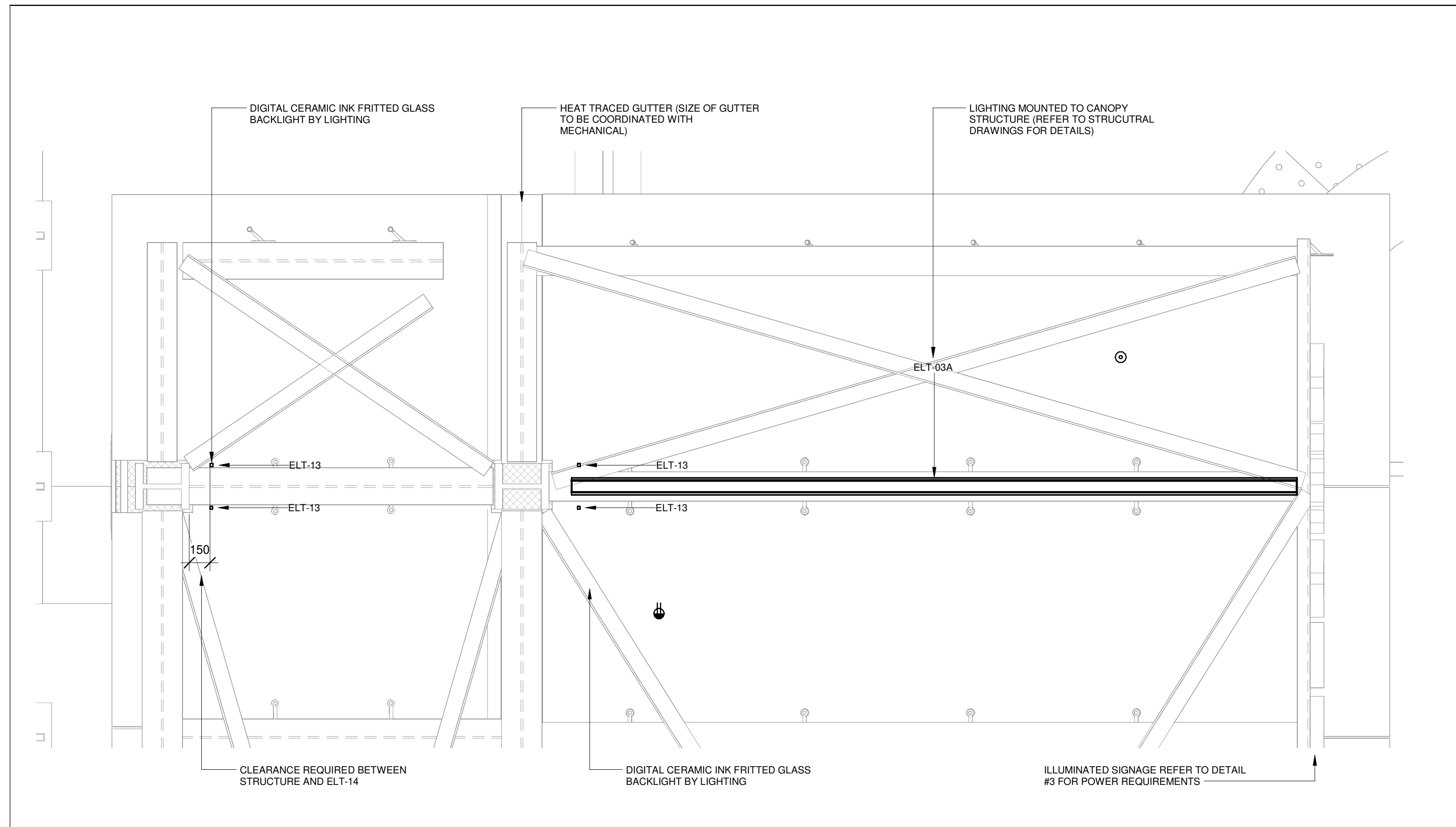
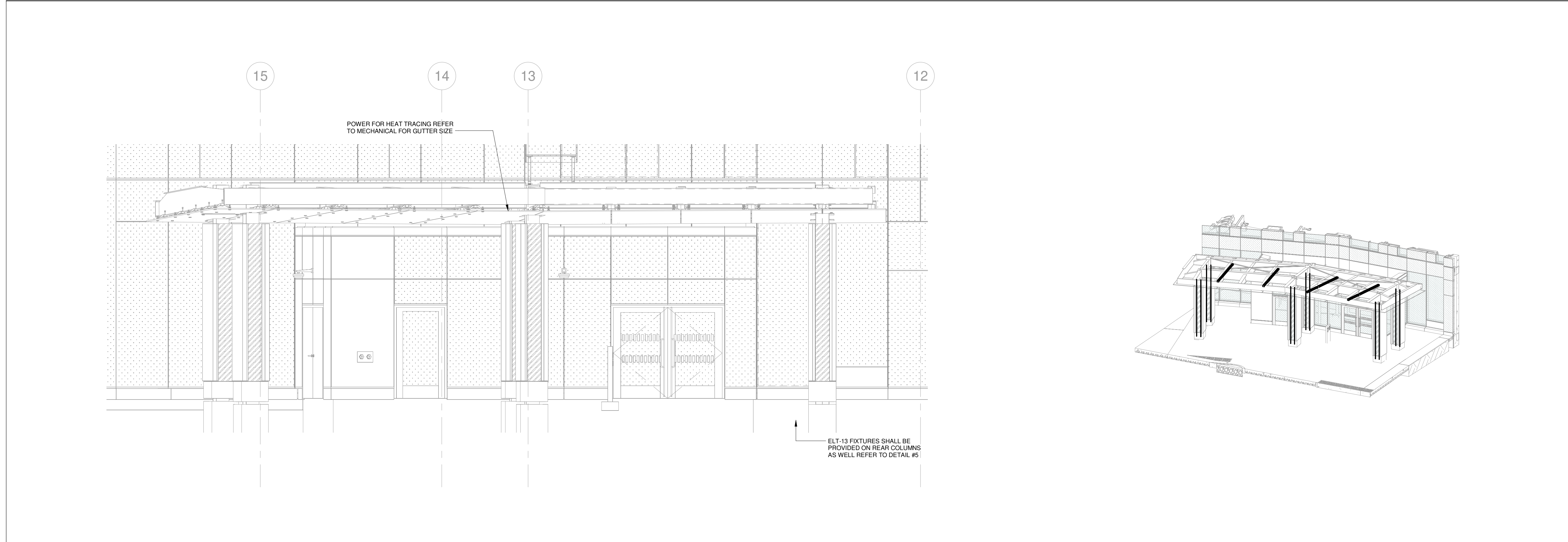


RESERVED FOR FUTURE INFORMATION

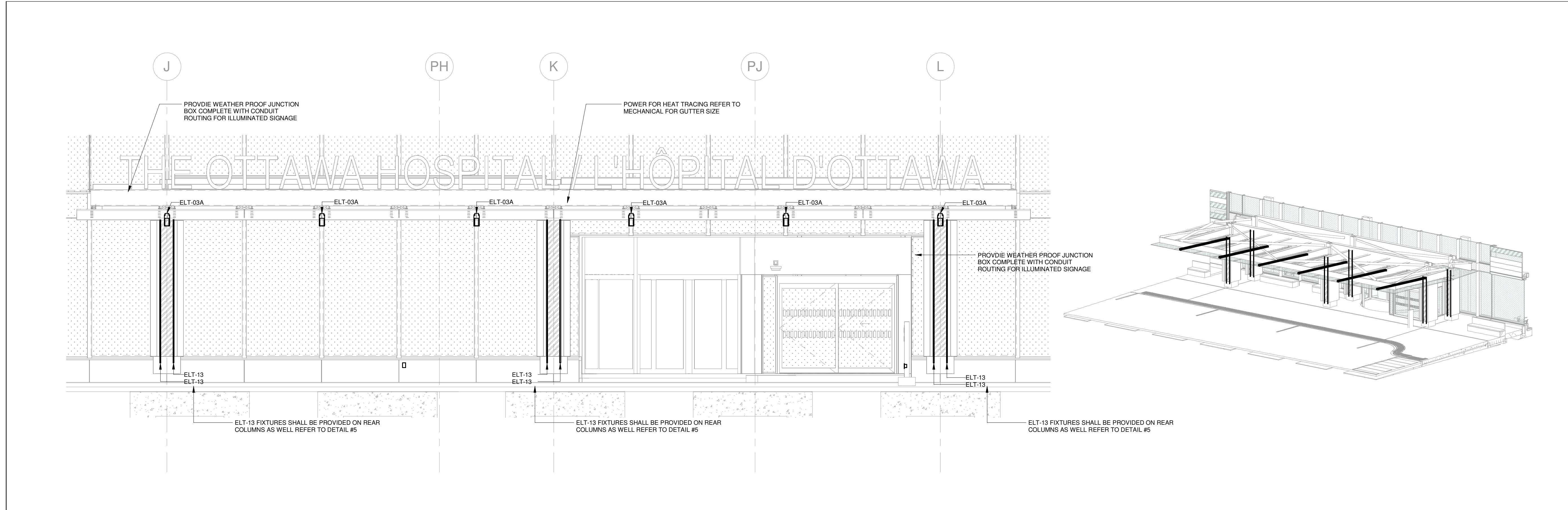


5 CANOPY CONDUIT STRUCTURE DETAIL
ET-101.2 1:25

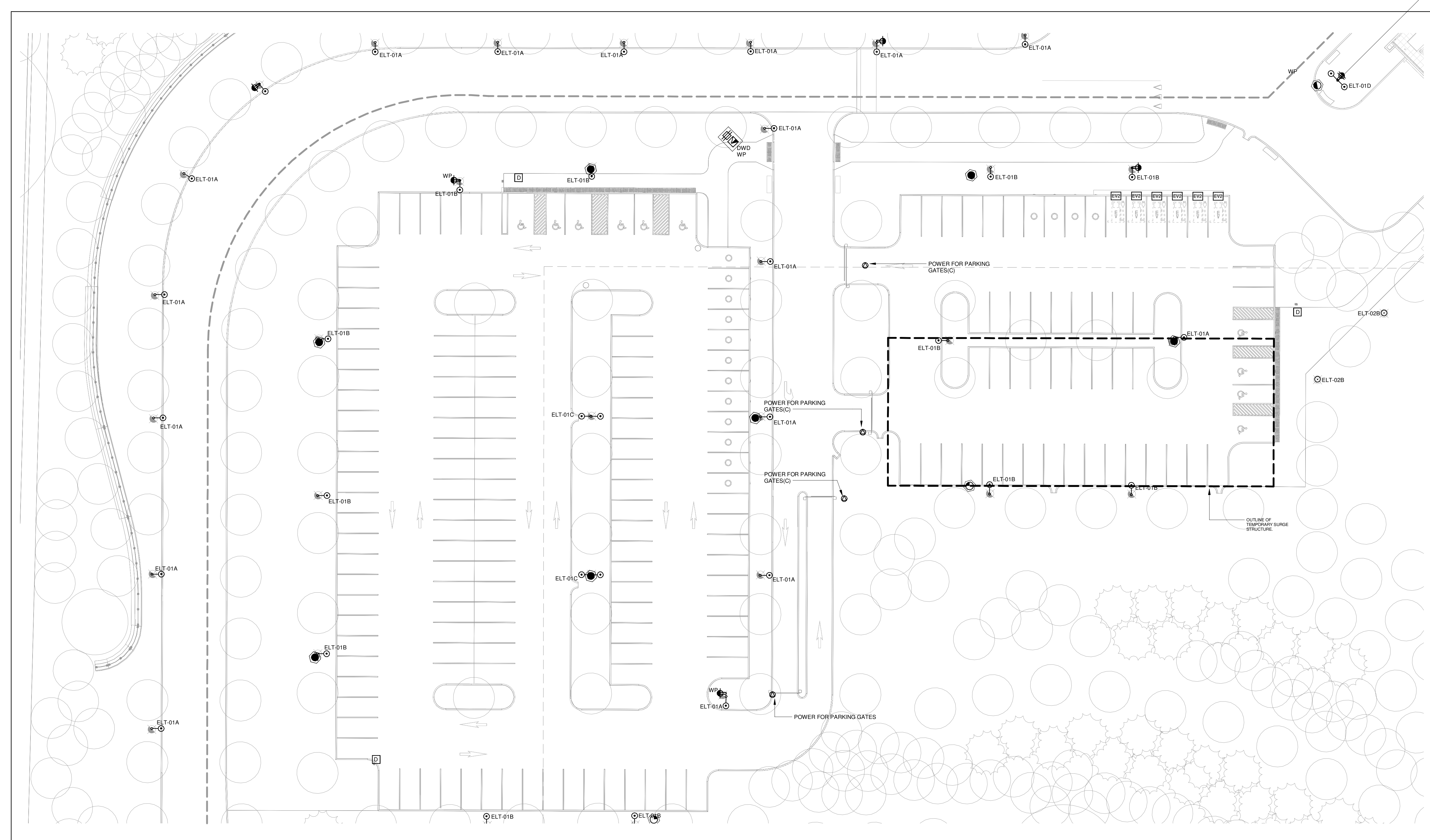
8 CANOPY COLUMN CONDUIT DETAIL
ET-101.2 1:50



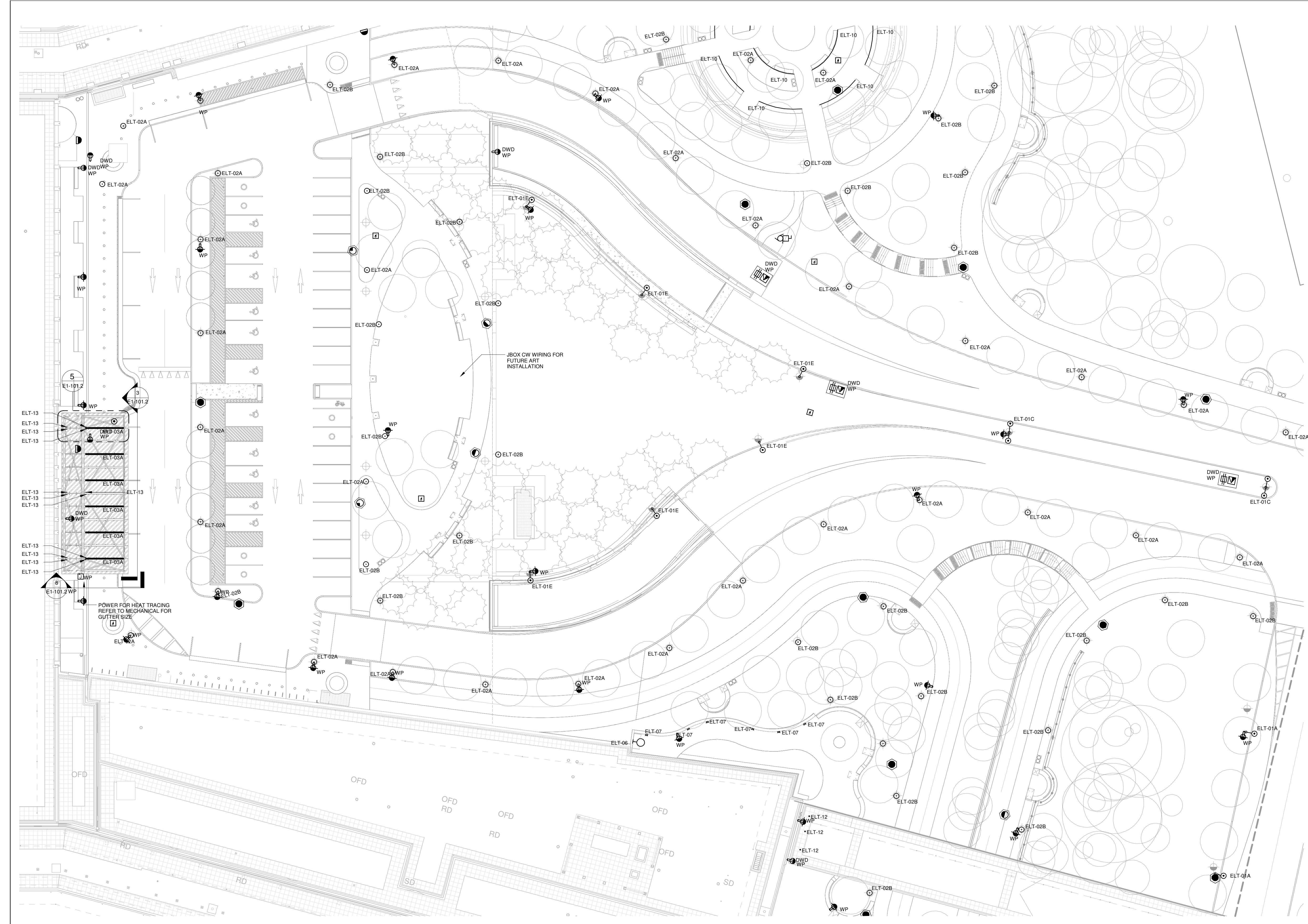
4 ELECTRICAL - NORTH WEST CANOPY DETAILS
ET-101.2 1:50



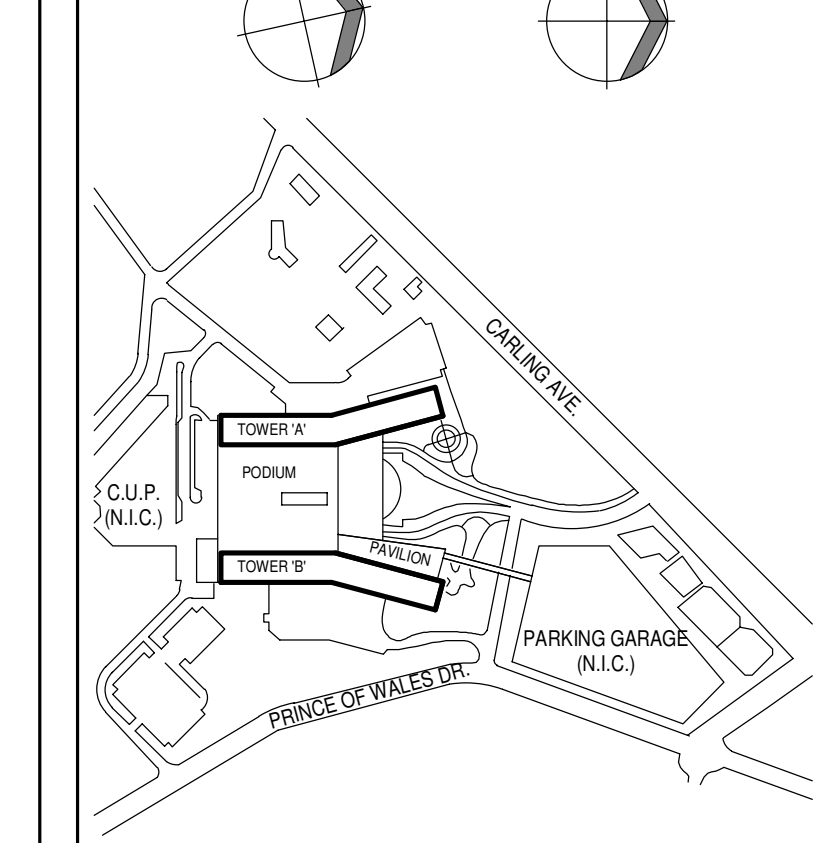
3 ELECTRICAL - CANOPY LIGHTING DETAILS
ET-101.2 1:50



2 ELECTRICAL - ZONE 4 - EAST PARKING LOT & ZONE 5B - EMERGENCY SERVICES PARKING (EAST)
ET-101.2 1:250



1 ELECTRICAL - ZONE 2B LEVEL 1 - MAIN ENTRY PLAZA
ET-101.2 1:250



REVISIONS

NO.	DESCRIPTION	DATE
05	SITE PLAN CONTROL RESUBMISSION	2025-01-13
04	50% DD SUBMISSION	2025-08-19
03	SITE PLAN CONTROL RESUBMISSION	2025-08-28
02	60% DD SUBMISSION	2025-06-05
01	30% DD SUBMISSION	2025-01-28
N/C		

DRAWING STATUS
NOT FOR CONSTRUCTION
DISCREPANCIES MUST BE REPORTED IMMEDIATELY TO THE ARCHITECT BEFORE PROCEEDING.
ONLY PLOTTED DIMENSIONS ARE TO BE USED. CONTRACTORS MUST CHECK ALL DIMENSIONS ON SITE. THIS DRAWING IS PROTECTED BY COPYRIGHT.
ALL DIMENSIONS ARE SHOWN IN METRIC.

AUTHOR
MULVEY & BANANI
95 Sheppard Avenue East, Suite 500, Toronto, ON M2N 3A1
416.733.2121 | www.com

PROJECT TEAM
DESIGN/BUILDER: POLED A JOINT VENTURE
ARCHITECTURAL: PARON ARCHITECTS LIMITED, JOSHUA LAMARIE PRATTE ARCHITECTS, AMARON ASSOCIATE ARCHITECTS, 800 RICHMOND ST. OTTAWA, ONT.
STRUCTURAL: STEPHENSON ENGINEERING LTD., BOUHLLETTE PARHEAU INC.
MECHANICAL: HR ANGUS & ASSOCIATES LTD., CROSBY ENGINEERING LTD.
ELECTRICAL: MULVEY & BANANI INTERNATIONAL INC.
CIVIL: WSP | CANADA INC.
LANDSCAPE: VERDECO DESIGN INC., PWP LANDSCAPE ARCHITECTURE

BUILDING CODE: UMO BUILDING CODE CONSULTANTS LTD.
AUTHOR PROJECT NO.: 2233-00
STAMP: STAMP

DRAWING TITLE
PARKING LOTS ZONES 1A & ZONE 2B ZONE 4 ZONE 5B

DRAWN: CHECKED: DATE: 01/28/25
SCALE AT 40" x 60": As indicated
GRAPHIC SCALE

DRAWING NO.: **E1-101.2** REV NO.: **05**