

RESERVED FOR FUTURE INFORMATION

SEAN MOORE MCP, RPP
MANAGER, DEVELOPMENT REVIEW - WEST
PLANNING, INFRASTRUCTURE & ECONOMIC
DEVELOPMENT DEPARTMENT, CITY OF OTTAWA

APPROVED
By Sean Moore at 6:44 pm, Jun 11, 2026

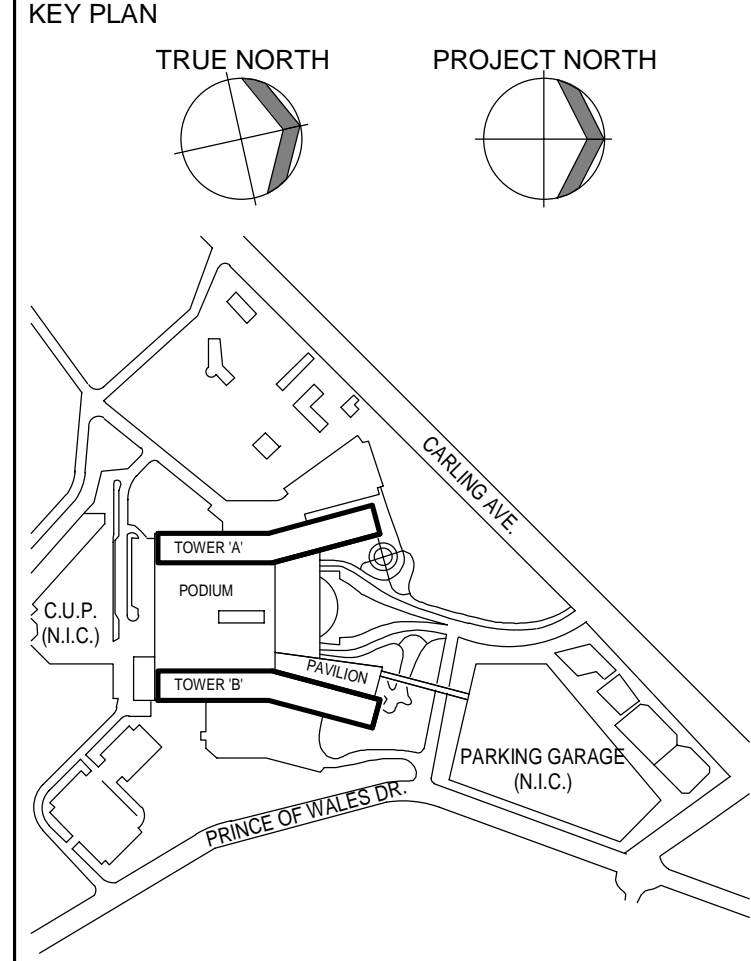


Table with 2 columns: REVISIONS, DATE. Contains revision history for the drawing.

Table with 2 columns: REVISIONS, DATE. Contains revision history for the drawing.

NOT FOR CONSTRUCTION

DISCREPANCIES MUST BE REPORTED IMMEDIATELY TO THE ARCHITECT BEFORE PROCEEDING. ONLY PLOTTED DIMENSIONS ARE TO BE USED. CONTRACTORS MUST CHECK ALL DIMENSIONS ON SITE. THIS DRAWING IS PROTECTED BY COPYRIGHT.

ALL DIMENSIONS ARE SHOWN IN METRIC.

AUTHOR

PROJECT TEAM

DESIGN/BUILDER: POLED, A JOINT VENTURE
ARCHITECTURAL: PARON ARCHITECTS LIMITED, ZOOH/LAMARIE PRATTE ARCHITECTS, ADAMSON ASSOCIATE ARCHITECTS, 886 RICHMOND ST. OTTAWA, ONT.

STRUCTURAL: STEPHENSON ENGINEERING LTD., BOUTHELLETTE PARIZEAU INC.

MECHANICAL: HR ANGUS & ASSOCIATES LTD., CROSSEY ENGINEERING LTD.

ELECTRICAL: MULVEY & BANANI INTERNATIONAL INC., HSP CANADA INC.

CIVIL: HSP CANADA INC.

LANDSCAPE: HERSCHELS DESIGN INC., PWP LANDSCAPE ARCHITECTURE

BUILDING CODE: UMG BUILDING CODE CONSULTANTS LTD.

AUTHOR PROJECT NO. 2233-00

STAMP

STAMP

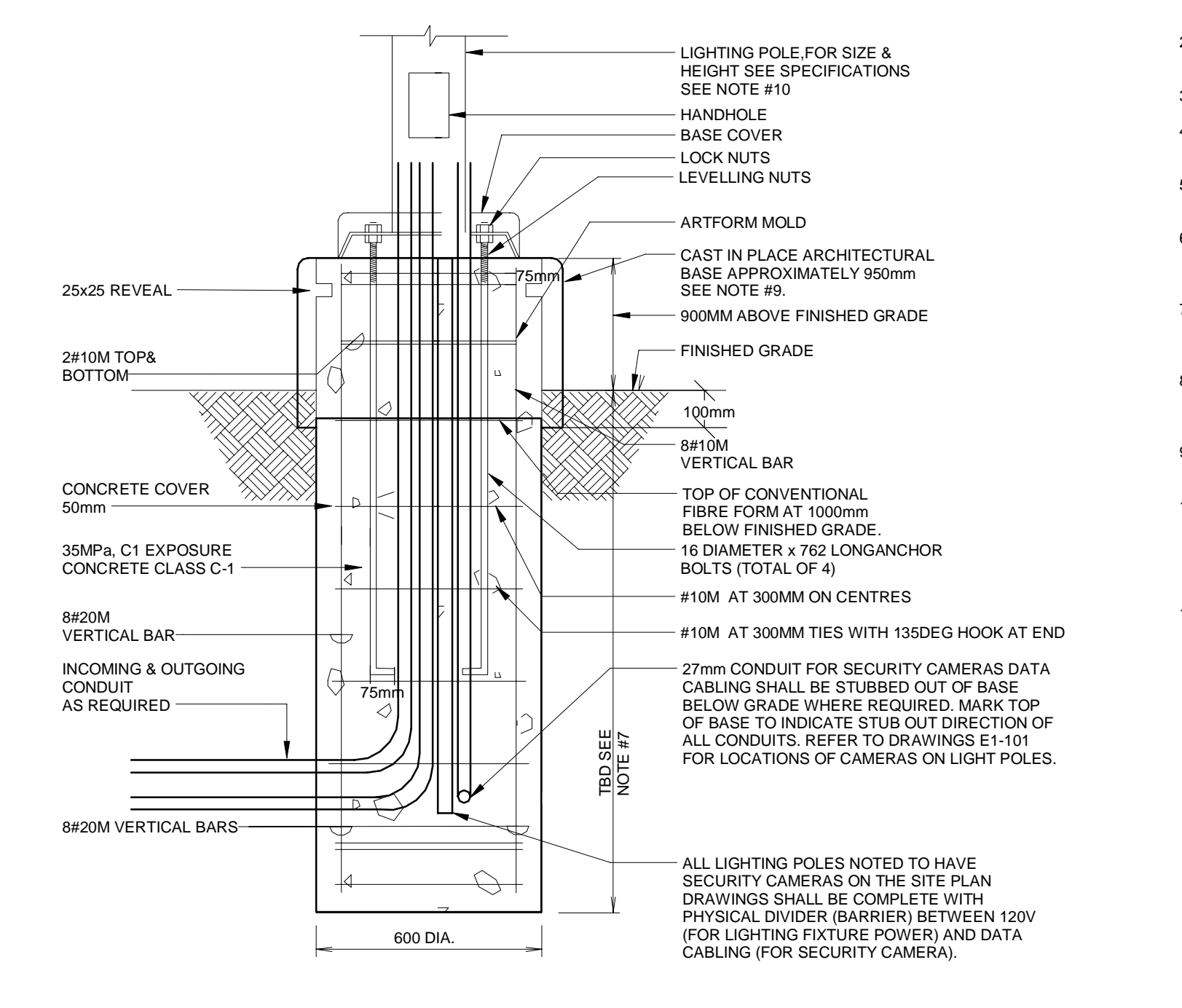
DRAWING TITLE
ELECTRICAL SITE DETAILS

DRAWN: CHECKED:

SCALE AT 40' x 60' DATE: 01/28/25
NTS

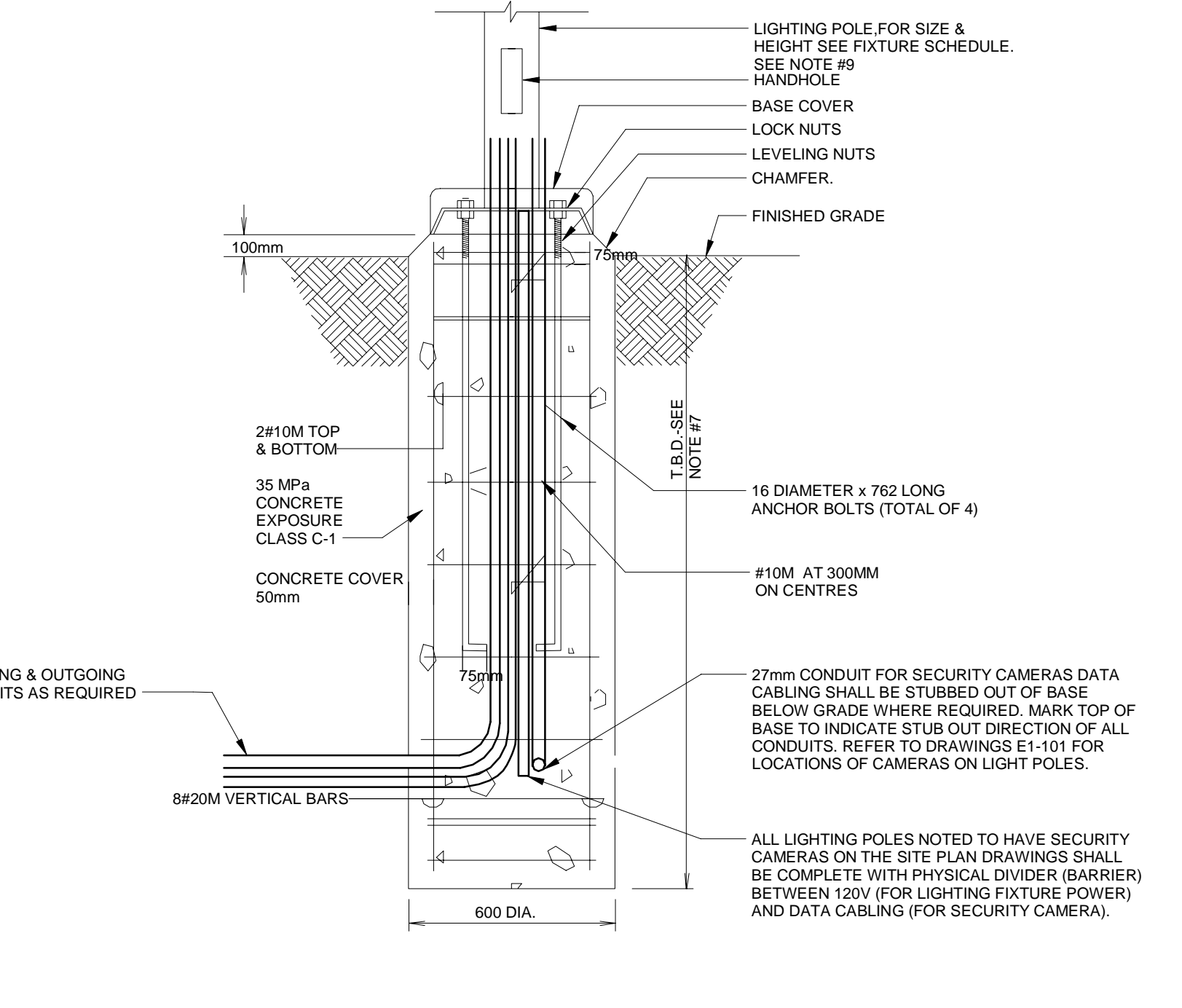
GRAPHIC SCALE

DRAWING NO. REV NO.



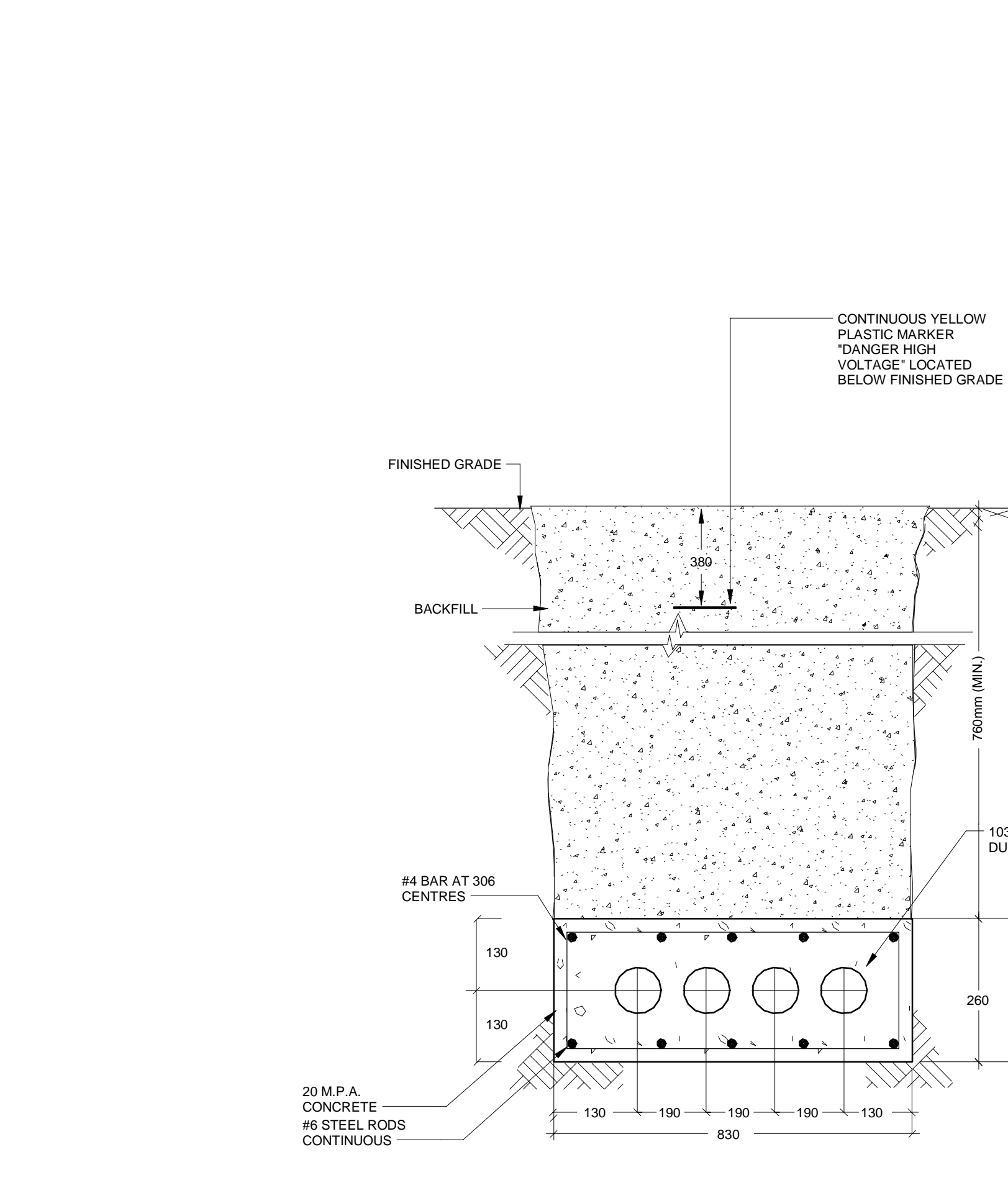
- GENERAL NOTES:
1. ALL POLES LOCATED IN DRIVEWAYS AND PARKING AREAS NOT PROTECTED BY A CURB...
2. ELECTRICAL CONTRACTOR TO VERIFY CORING SIZE IN POLE BASE PLATE PRIOR TO SETTING CONDUIT SLEEVES...
3. TOP OF FOUNDATION SHALL BE TROWELLED SMOOTH AND LEVEL...
4. CLASS OF CONCRETE SHALL BE 35MPa. CONCRETE SHALL BE CURABLE...
5. MINIMUM TWO SLEEVES REQUIRED FOR EACH CONG. FOUNDATION UNLESS OTHERWISE SHOWN...
6. PROVIDE A 100MM DIA. 300MM STEEL CORNER COATED GROUND ROD ADJACENT TO POLES AND CONNECT TO METAL POLE WITH BARE COPPER CONDUCTOR...
7. BURIAL DEPTH SHALL BE MINIMUM 100mm FOR UP TO 60MM LIGHT POLES. REFER TO LUMINAIRE SCHEDULE FOR HEIGHT OF LIGHT POLES...
8. SUBJECT TO SOIL CONDITIONS, DEPTH ASSUMES SOIL IS CAPABLE OF RESISTING LATERAL PRESSURE OF 50kPa. CONTRACTOR SHALL VERIFY SOIL CONDITIONS PRIOR TO INSTALLATION...
9. PROVIDE SEALED SHOP DRAWING TO SPLIT SITE (S/S) CONDITIONS FROM A PROFESSIONAL ENGINEER...
10. POLE SHALL BE STRUCTURALLY CAPABLE TO ACCOMMODATE MOVING SECURITY CAMERAS...
11. POLE SHALL BE STRUCTURALLY CAPABLE TO ACCOMMODATE MOVING SECURITY CAMERAS...
12. POLE SHALL BE STRUCTURALLY CAPABLE TO ACCOMMODATE MOVING SECURITY CAMERAS...
13. POLE SHALL BE STRUCTURALLY CAPABLE TO ACCOMMODATE MOVING SECURITY CAMERAS...
14. POLE SHALL BE STRUCTURALLY CAPABLE TO ACCOMMODATE MOVING SECURITY CAMERAS...
15. POLE SHALL BE STRUCTURALLY CAPABLE TO ACCOMMODATE MOVING SECURITY CAMERAS...
16. POLE SHALL BE STRUCTURALLY CAPABLE TO ACCOMMODATE MOVING SECURITY CAMERAS...
17. POLE SHALL BE STRUCTURALLY CAPABLE TO ACCOMMODATE MOVING SECURITY CAMERAS...
18. POLE SHALL BE STRUCTURALLY CAPABLE TO ACCOMMODATE MOVING SECURITY CAMERAS...
19. POLE SHALL BE STRUCTURALLY CAPABLE TO ACCOMMODATE MOVING SECURITY CAMERAS...
20. POLE SHALL BE STRUCTURALLY CAPABLE TO ACCOMMODATE MOVING SECURITY CAMERAS...

3 POLE BASE DETAIL FOR POLES IN DRIVEWAYS AND PARKING AREA
E1-602 N.T.S.



- GENERAL NOTES:
1. ALL POLES LOCATED IN ISLANDS PROTECTED BY A CURB AND THAT ARE LOCATED AWAY FROM THE DRIVEWAY/PARKING AREA SUCH THAT THEY DON'T REQUIRE PROTECTION SHALL BE PROVIDED AS SHOWN IN THIS DETAIL...
2. ELECTRICAL CONTRACTOR TO VERIFY CORING SIZE IN POLE BASE PLATE PRIOR TO SETTING CONDUIT SLEEVES...
3. TOP OF FOUNDATION SHALL BE TROWELLED SMOOTH AND LEVEL...
4. CLASS OF CONCRETE SHALL BE 35MPa. CONCRETE SHALL BE CURABLE...
5. MINIMUM TWO SLEEVES REQUIRED FOR EACH CONG. FOUNDATION UNLESS OTHERWISE SHOWN...
6. PROVIDE A 100MM DIA. 300MM STEEL CORNER COATED GROUND ROD ADJACENT TO POLES AND CONNECT TO METAL POLE WITH BARE COPPER CONDUCTOR...
7. BURIAL DEPTH SHALL BE MINIMUM 100mm FOR UP TO 60MM LIGHT POLES. REFER TO LUMINAIRE SCHEDULE FOR HEIGHT OF LIGHT POLES...
8. SUBJECT TO SOIL CONDITIONS, DEPTH ASSUMES SOIL IS CAPABLE OF RESISTING LATERAL PRESSURE OF 50kPa. CONTRACTOR SHALL VERIFY SOIL CONDITIONS PRIOR TO INSTALLATION...
9. PROVIDE SEALED SHOP DRAWING TO SPLIT SITE (S/S) CONDITIONS FROM A PROFESSIONAL ENGINEER...
10. POLE SHALL BE STRUCTURALLY CAPABLE TO ACCOMMODATE MOVING SECURITY CAMERAS...
11. POLE SHALL BE STRUCTURALLY CAPABLE TO ACCOMMODATE MOVING SECURITY CAMERAS...
12. POLE SHALL BE STRUCTURALLY CAPABLE TO ACCOMMODATE MOVING SECURITY CAMERAS...
13. POLE SHALL BE STRUCTURALLY CAPABLE TO ACCOMMODATE MOVING SECURITY CAMERAS...
14. POLE SHALL BE STRUCTURALLY CAPABLE TO ACCOMMODATE MOVING SECURITY CAMERAS...
15. POLE SHALL BE STRUCTURALLY CAPABLE TO ACCOMMODATE MOVING SECURITY CAMERAS...
16. POLE SHALL BE STRUCTURALLY CAPABLE TO ACCOMMODATE MOVING SECURITY CAMERAS...
17. POLE SHALL BE STRUCTURALLY CAPABLE TO ACCOMMODATE MOVING SECURITY CAMERAS...
18. POLE SHALL BE STRUCTURALLY CAPABLE TO ACCOMMODATE MOVING SECURITY CAMERAS...
19. POLE SHALL BE STRUCTURALLY CAPABLE TO ACCOMMODATE MOVING SECURITY CAMERAS...
20. POLE SHALL BE STRUCTURALLY CAPABLE TO ACCOMMODATE MOVING SECURITY CAMERAS...

2 POLE BASE DETAIL FOR POLES ALONG PEDESTRIAN PATHWAYS
E1-602 N.T.S.



1 INCOMING HYDRO DUCT BANK TO CUP BUILDING FROM MAPLE DR.
E1-602 N.T.S.