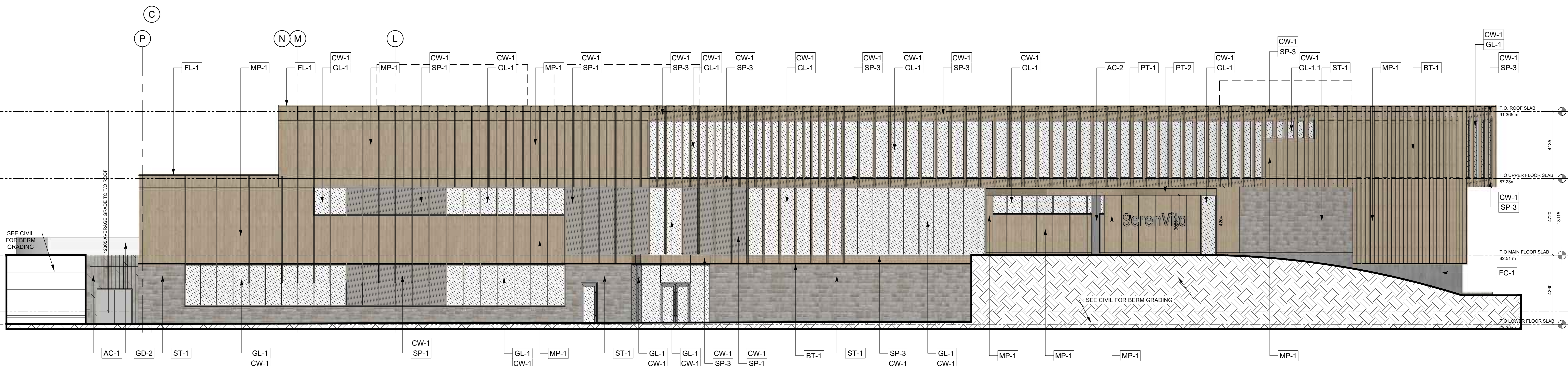


1 SOUTH ELEVATION



2 EAST ELEVATION

**EXTERIOR FINISHES**

**FACADE**

MP-1 NAME: METAL COMPOSITE PANELS  
PRODUCT: DRY REVEAL SYSTEM  
COLOR: CHAMPAGNE METALLIC (TBC)

FC-1 NAME: FIBER CEMENT PANELS  
PRODUCT: 2416L 2-LAYER ATTACH SYSTEM WITH RIVETS  
COLOR: MEDIUM GREY

AC-1 NAME: BOARD FORMED CONCRETE  
PRODUCT: TBC  
COLOR: NATURAL

AC-2 NAME: ARCHITECTURAL CONCRETE  
PRODUCT: SMOOTH FINISH  
COLOR: NATURAL

ST-1 NAME: NATURAL STONE  
PRODUCT: SPLIT FACED LIMESTONE (FULL BED)  
COLOR: SEPIA

**CURTAIN WALL & BATTENS**

CW-1 NAME: ALUMINUM CURTAIN WALL  
PRODUCT: SSG SYSTEM (64x133mm)  
COLOR: CLEAR ANODIZED ALUMINUM

BT-1 NAME: ALUMINUM BATTEN  
PRODUCT: TBC  
COLOR: TO MATCH MP-1, PT-1 (KNIFE PLATE)

GL-1 NAME: GLASS (VISION)  
PRODUCT: INSULATING GLASS UNIT

GL-1.1 NAME: GLASS (VISION-PRIVACY FILM)  
PRODUCT: INSULATING GLASS UNIT

GL-2 NAME: GLASS (GUARD)  
PRODUCT: LAMINATED SAFETY GLASS  
COLOR: CLEAR

GL-BS BIRD SAFE ETCHING OR FILM

SP-1 NAME: GLASS (SPANDREL)  
PRODUCT: INSULATING GLASS UNIT  
COLOR: GREY

SP-2 NAME: GLASS (SHADOW BOX SPANDREL)  
PRODUCT: INSULATING GLASS UNIT

SP-3 NAME: ACES (SPANDREL)  
PRODUCT: METAL COMPOSITE PANEL  
COLOR: TO MATCH MP-1

**MISC. METALS**

FL-1 NAME: ALUMINUM FLASHING  
PRODUCT: TBC  
COLOR: TO MATCH MP-1

**PAINT**

PT-1 NAME: TBC  
PRODUCT: TBC  
COLOR: GREY

PT-2 NAME: TBC  
PRODUCT: TBC  
COLOR: TO MATCH MP-1

**GUARDS**

GD-1 SEE A702

GD-2 SEE A702

GD-3 SEE A702

GD-4 SEE A702

**GENERAL NOTES**

A THE CONTRACTOR SHALL CHECK AND VERIFY ALL DIMENSIONS ON SITE AND REPORT ALL DISCREPANCIES TO THE ARCHITECT.

B DO NOT SCALE DRAWINGS.

C ALL WORK SHALL COMPLY WITH THE ONTARIO BUILDING CODE AND THE REQUIREMENTS OF ALL AUTHORITIES HAVING JURISDICTION.

D THIS DRAWING IS THE EXCLUSIVE PROPERTY OF CHRISTOPHER SIMMONDS ARCHITECT INC. COPYRIGHT RESERVED.



**CUNLIFFE & ASSOCIATES**  
1550 CARLING AVENUE, SUITE 200  
OTTAWA, ONTARIO K1Z 1S8  
PHONE: 613.728.7242  
E-MAIL: cun@ccafirm.com

**NOVATECH**  
Engineers, Planners & Landscape Architects  
240 MICHAEL COWPLAND DRIVE, SUITE 200  
OTTAWA, ONTARIO K2M 1P5  
PHONE: 613.254.9643  
E-MAIL: novatech@novatech-eng.com

**CIMA**  
600-1400 BLAIR TOWERS PLACE  
OTTAWA, ONTARIO K1J 8B8  
PHONE: 613.860.2462

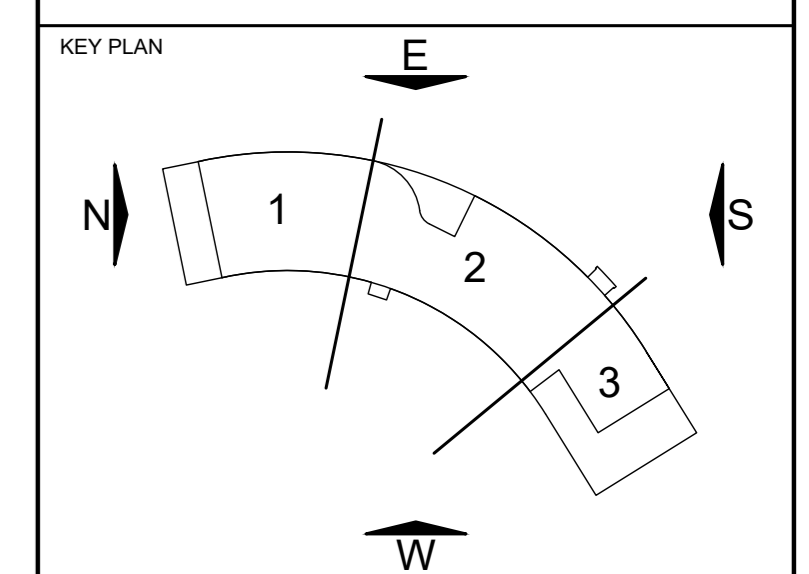
**FAIRHALL MOFFATT & WOODLAND LTD**  
800 TERRY FOX DR, SUITE 100  
KANATA, ONTARIO K2L 8K5

**GEMTEC**  
32 STERILE DRIVE  
OTTAWA, ONTARIO K1J 8K5  
PHONE: 613.836.1422  
E-MAIL: gtw@gemtec.ca

**ANNIS O'SULLIVAN VOLLEBEKK LTD**  
14 CONCOURSE GATE, SUITE 500  
NEPEAN, ONTARIO K2E 7J8

**NELLA CUTLERY & FOOD EQUIPMENT**  
676 BATHURST STREET  
TORONTO, ON M6R 3L3  
PHONE: 416.522.9255  
E-MAIL: nellac@nellacutlery.ca

**HARCO**  
5610 MCADAM ROAD  
MISSISSAUGA, ONTARIO L4Z 1P1  
PHONE: 905.890.1220



No.	DATE	DESCRIPTION
04	2026.01.28	ISSUED FOR ZSA AND SPC
03	2025.12.12	ISSUED FOR COORDINATION
02	2025.01.07	ISSUED FOR COORDINATION
01	2024.12.06	ISSUED FOR COORDINATION

ARCHITECT'S SEAL: **CHRISTOPHER SIMMONDS ARCHITECTS**  
ONTARIO ASSOCIATION OF ARCHITECTS  
LICENCE 4559

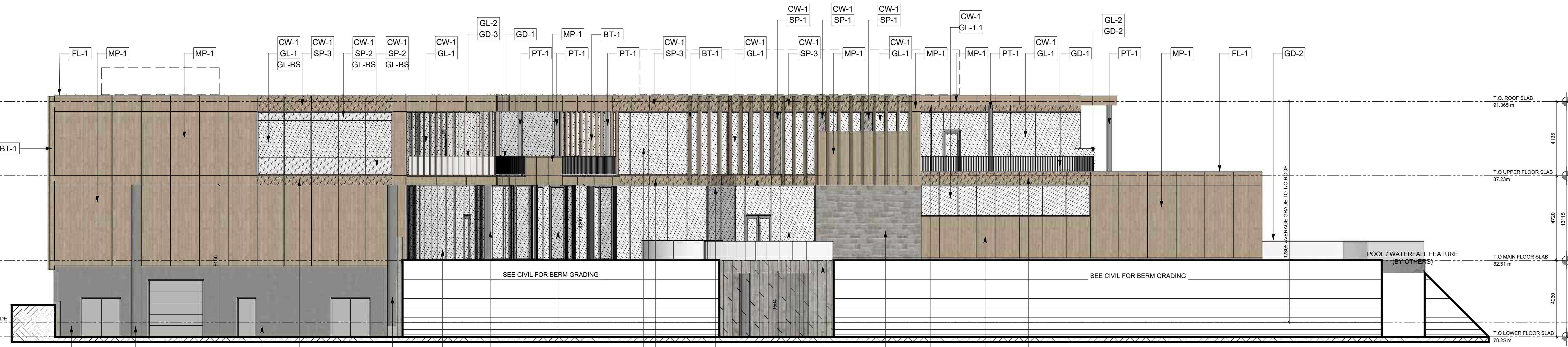
PROJECT NORTH:

**simmonds ARCHITECTURE**  
340 Catherine Street  
Ottawa, ON K1R 1C4  
613.567.7888  
simmondsarch.com

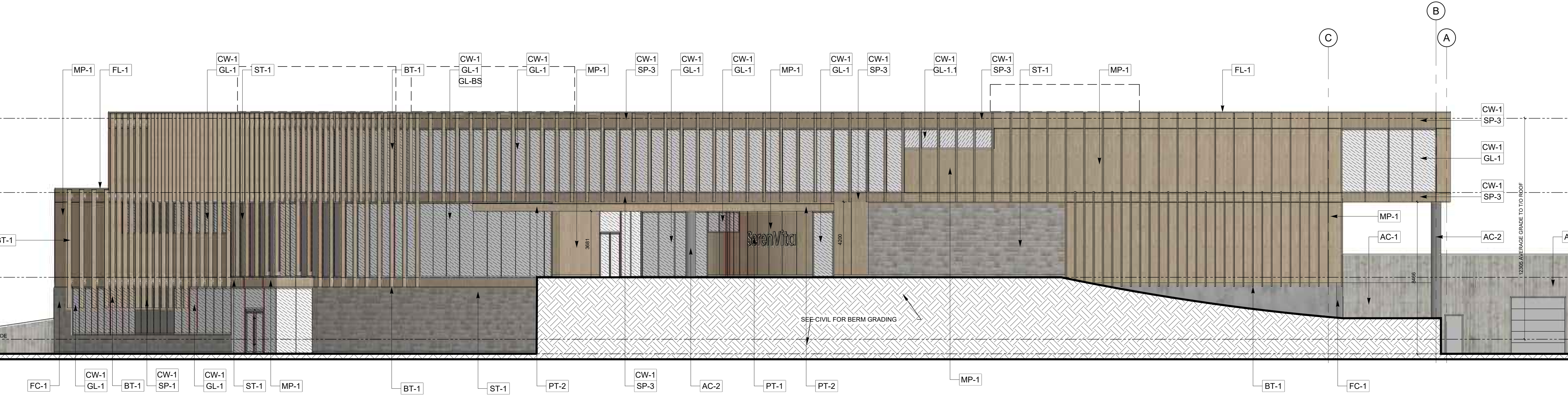
PROJECT: **SERENVITA WELLNESS SPA**  
2605&2707 SOLANDT ROAD, OTTAWA, ON

DRAWING TITLE: **ELEVATIONS**

DATE: 2026.01.15 DRAWING No:  
SCALE: AS NOTED  
DRAWN BY: CSA  
JOB No: 878-24



1 WEST ELEVATION  
A202 1/16



2 NORTH ELEVATION  
A202 1/16

EXTERIOR FINISHES	
<b>FACADE</b>	
MP-1	NAME: METAL COMPOSITE PANELS PRODUCT: DRY REVEAL SYSTEM COLOR: CHAMPAGNE METALLIC (TBC)
FC-1	NAME: FIBER CEMENT PANELS PRODUCT: 2416L 2-LAYER ATTACH SYSTEM WITH RIVETS COLOR: MEDIUM GREY
AC-1	NAME: BOARD FORMED CONCRETE PRODUCT: TBD COLOR: NATURAL
AC-2	NAME: ARCHITECTURAL CONCRETE PRODUCT: SMOOTH FINISH COLOR: NATURAL
ST-1	NAME: NATURAL STONE PRODUCT: SPLIT FACED LIMESTONE (FULL BED) COLOR: SEPIA
<b>CURTAIN WALL &amp; BATTENS</b>	
CW-1	NAME: ALUMINUM CURTAIN WALL PRODUCT: SSG SYSTEM (84x133mm) COLOR: CLEAR ANODIZED ALUMINUM
BT-1	NAME: ALUMINUM BATTEN PRODUCT: 50x50mm COLOR: TO MATCH MP-1, PT-1 (KNIFE PLATE)
GL-1	NAME: GLASS (VISION) PRODUCT: INSULATING GLASS UNIT
GL-1.1	NAME: GLASS (VISION-PRIVACY FILM) PRODUCT: INSULATING GLASS UNIT
GL-2	NAME: GLASS (GUARD) PRODUCT: LAMINATED SAFETY GLASS COLOR: CLEAR
GL-BS	BIRD SAFE ETCHING OR FILM
SP-1	NAME: GLASS (SPANDREL) PRODUCT: INSULATING GLASS UNIT COLOR: GREY
SP-2	NAME: GLASS (SHADOW BOX SPANDREL) PRODUCT: INSULATING GLASS UNIT
SP-3	NAME: AC/SPANDREL PRODUCT: METAL COMPOSITE PANEL COLOR: TO MATCH MP-1
<b>MISC. METALS</b>	
FL-1	NAME: ALUMINUM FLASHING PRODUCT: TBD COLOR: TO MATCH MP-1
<b>PAINT</b>	
PT-1	NAME: TBD PRODUCT: TBD COLOR: GREY
PT-2	NAME: TBD PRODUCT: TBD COLOR: TO MATCH MP-1
<b>GUARDS</b>	
GD-1	SEE A702
GD-2	SEE A702
GD-3	SEE A702
GD-4	SEE A702

**GENERAL NOTES**

A THE CONTRACTOR SHALL CHECK AND VERIFY ALL DIMENSIONS ON SITE AND REPORT ALL DISCREPANCIES TO THE ARCHITECT.

B DO NOT SCALE DRAWINGS.

C ALL WORK SHALL COMPLY WITH THE ONTARIO BUILDING CODE AND THE REQUIREMENTS OF ALL AUTHORITIES HAVING JURISDICTION.

D THIS DRAWING IS THE EXCLUSIVE PROPERTY OF CHRISTOPHER SIMMONDS ARCHITECT INC. COPYRIGHT RESERVED.



**CUNLIFFE & ASSOCIATES**  
1550 CARLING AVENUE, SUITE 200  
OTTAWA, ONTARIO  
K1Z 1S5  
PHONE: 613.728.7242  
E-MAIL: cun@ccafirm.ca

**NOVATECH**  
Engineers, Planners & Landscape Architects  
240 MICHAEL COWPLAND DRIVE, SUITE 200  
OTTAWA, ONTARIO  
K2H 1P5  
PHONE: 613.254.9643  
E-MAIL: novatech@novatech-eng.com

**CIMA**  
600-1400 BLAIR TOWERS PLACE  
OTTAWA, ONTARIO  
K1J 8B8  
PHONE: 613.860.2462

**FAIRHALL MOFFATT & WOODLAND LTD**  
600 TERRY FOX DR, SUITE 100  
KANATA, ONTARIO K2L 8B5  
**ANNIS O'SULLIVAN VOLLEBEKK LTD**  
14 CONCOURSE GATE, SUITE 500  
NEPEAN, ONTARIO K2E 7J8

**GEMTEC**  
32 STERIE DRIVE  
OTTAWA, ONTARIO  
K1J 8K6  
PHONE: 613.836.1422  
E-MAIL: gtw@gemtec.ca

**NELLA CUTLERY & FOOD EQUIPMENT**  
678 BATHURST STREET  
TORONTO, ON M6R 3L3  
PHONE: 416.522.9555  
E-MAIL: nellac@nellacutlery.ca

**HARCO**  
5610 MCADAM ROAD  
MISSISSAUGA, ONTARIO  
L4Z 1P1  
PHONE: 905.890.1220



No.	DATE	DESCRIPTION
04	2026.01.28	ISSUED FOR 23A AND 23C
03	2025.12.12	ISSUED FOR COORDINATION
02	2025.01.07	ISSUED FOR COORDINATION
01	2024.12.06	ISSUED FOR COORDINATION

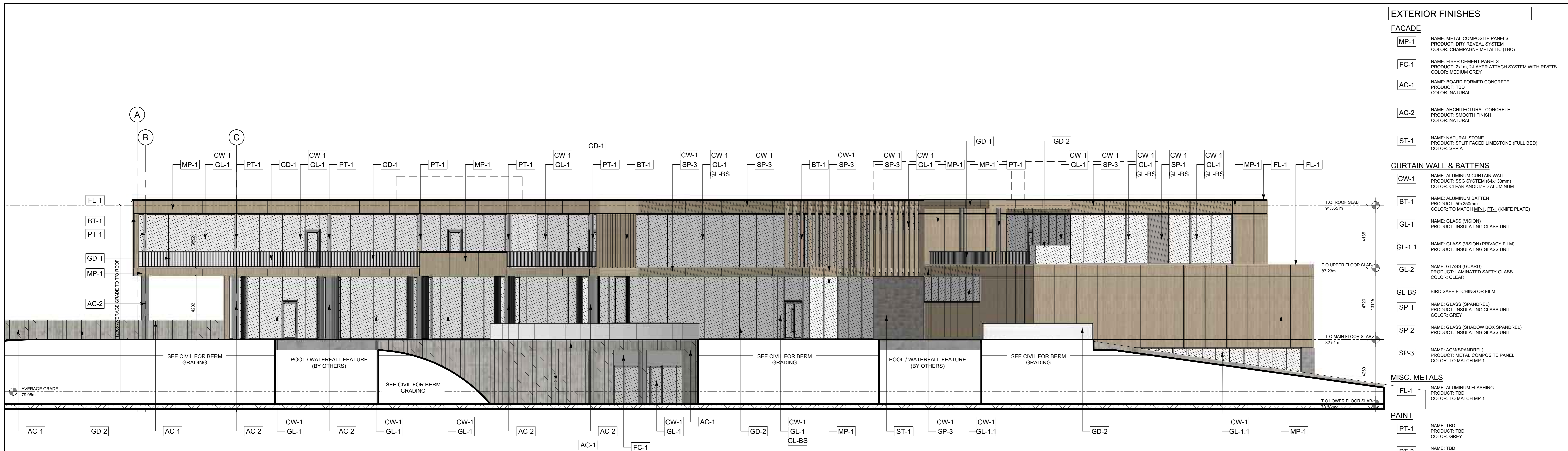
ARCHITECT'S SEAL: **CHRISTOPHER SIMMONDS ARCHITECTS**  
ONTARIO ASSOCIATION OF ARCHITECTS  
LICENCE 4559

**simmonds ARCHITECTURE**  
340 Catherine Street  
Ottawa, ON K1R 1C4  
613.567.7888  
simmondsarch.com

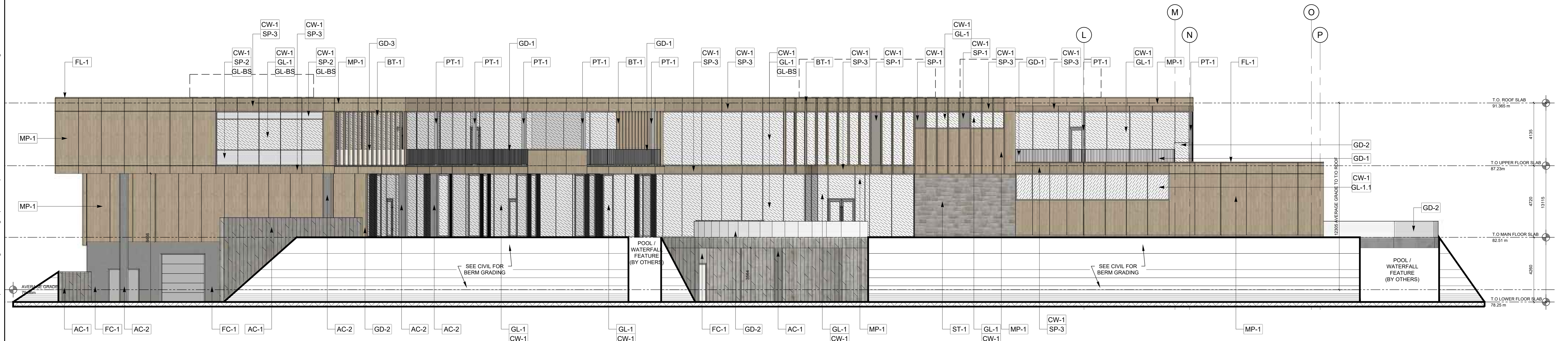
PROJECT: SERENVITA WELLNESS SPA  
2605&2707 SOLANDT ROAD, OTTAWA, ON

DRAWING TITLE: ELEVATIONS

DATE:	2026.01.15	DRAWING No:
SCALE:	AS NOTED	
DRAWN BY:	CSA	
JOB No:	878-24	



1 NORTH WEST ELEVATION



2 NORTH EAST ELEVATION

**EXTERIOR FINISHES**

**FACADE**

MP-1 NAME: METAL COMPOSITE PANELS  
PRODUCT: DRY REVEAL SYSTEM  
COLOR: CHAMPAGNE METALLIC (TBC)

FC-1 NAME: FIBER CEMENT PANELS  
PRODUCT: 24in. 2-LAYER ATTACH SYSTEM WITH RIVETS  
COLOR: MEDIUM GREY

AC-1 NAME: BOARD FORMED CONCRETE  
PRODUCT: T&B  
COLOR: NATURAL

AC-2 NAME: ARCHITECTURAL CONCRETE  
PRODUCT: SMOOTH FINISH  
COLOR: NATURAL

ST-1 NAME: NATURAL STONE  
PRODUCT: SPLIT FACED LIMESTONE (FULL BED)  
COLOR: SEPIA

**CURTAIN WALL & BATTENS**

CW-1 NAME: ALUMINUM CURTAIN WALL  
PRODUCT: SSG SYSTEM (64x133mm)  
COLOR: CLEAR ANODIZED ALUMINUM

BT-1 NAME: ALUMINUM BATTEN  
PRODUCT: 50x25mm  
COLOR: TO MATCH MP-1, PT-1 (KNIFE PLATE)

GL-1 NAME: GLASS (VISION)  
PRODUCT: INSULATING GLASS UNIT

GL-1.1 NAME: GLASS (VISION-PRIVACY FILM)  
PRODUCT: INSULATING GLASS UNIT

GL-2 NAME: GLASS (GUARD)  
PRODUCT: LAMINATED SAFETY GLASS  
COLOR: CLEAR

GL-BS BIRD SAFE ETCHING OR FILM

SP-1 NAME: GLASS (SPANDREL)  
PRODUCT: INSULATING GLASS UNIT  
COLOR: GREY

SP-2 NAME: GLASS (SHADOW BOX SPANDREL)  
PRODUCT: INSULATING GLASS UNIT

SP-3 NAME: ACM(SPANDREL)  
PRODUCT: METAL COMPOSITE PANEL  
COLOR: TO MATCH MP-1

**MISC. METALS**

FL-1 NAME: ALUMINUM FLASHING  
PRODUCT: T&B  
COLOR: TO MATCH MP-1

**PAINT**

PT-1 NAME: T&B  
PRODUCT: T&B  
COLOR: GREY

PT-2 NAME: T&B  
PRODUCT: T&B  
COLOR: TO MATCH MP-1

**GUARDS**

GD-1 SEE A702

GD-2 SEE A702

GD-3 SEE A702

GD-4 SEE A702

**GENERAL NOTES**

A THE CONTRACTOR SHALL CHECK AND VERIFY ALL DIMENSIONS ON SITE AND REPORT ALL DISCREPANCIES TO THE ARCHITECT.

B DO NOT SCALE DRAWINGS.

C ALL WORK SHALL COMPLY WITH THE ONTARIO BUILDING CODE AND THE REQUIREMENTS OF ALL AUTHORITIES HAVING JURISDICTION.

D THIS DRAWING IS THE EXCLUSIVE PROPERTY OF CHRISTOPHER SIMMONDS ARCHITECT INC. COPYRIGHT RESERVED.



**CUNLIFFE & ASSOCIATES**  
1550 CARLING AVENUE, SUITE 200  
OTTAWA, ONTARIO K1Z 1S8  
PHONE: 613.728.7242  
E-MAIL: cun@ccafirm.com

**NOVATECH**  
Engineers, Planners & Landscape Architects  
240 MICHAEL COWPLAND DRIVE, SUITE 200  
OTTAWA, ONTARIO K2M 1P5  
PHONE: 613.254.9641  
E-MAIL: novatech@novatech-eng.com

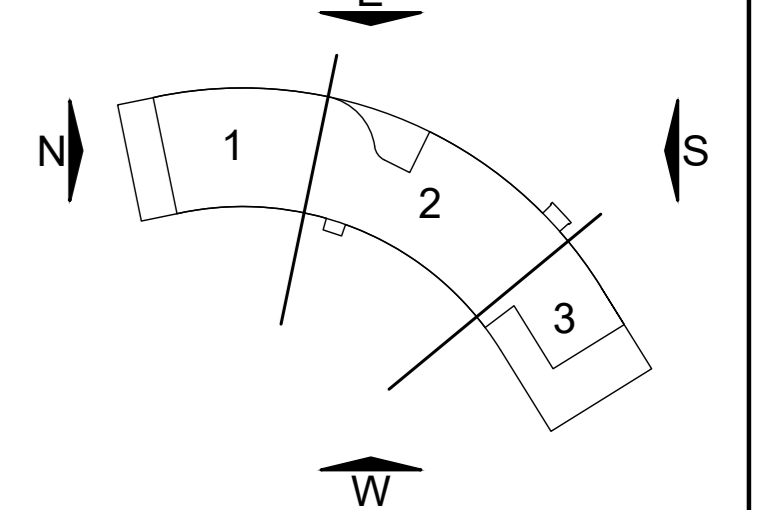
**CIMA**  
600-1400 BLAIR TOWERS PLACE  
OTTAWA, ONTARIO K1J 8B8  
PHONE: 613.860.2462

**FAIRHALL MOFFATT & WOODLAND LTD**  
800 TERRY FOX DR, SUITE 100  
KANATA, ONTARIO K2B 8B5

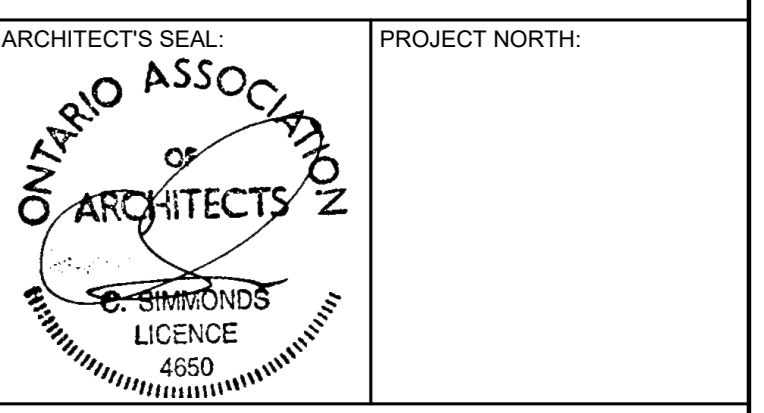
**ANNIS O'SULLIVAN VOLLEBEKK LTD**  
14 CONCOURSE GATE, SUITE 500  
NEPEAN, ONTARIO K2E 7J8

**NELLA CUTLERY & FOOD EQUIPMENT**  
678 BATHURST STREET  
TORONTO, ON M5R 3L3  
PHONE: 416.522.9555  
E-MAIL: nellac@nellacutlery.ca

**HARCO**  
5610 MACDAM ROAD  
MISSISSAUGA, ONTARIO L4Z 1P1  
PHONE: 905.890.1220



No.	DATE	DESCRIPTION
04	2026.01.28	ISSUED FOR 23A AND SPC
03	2025.12.12	ISSUED FOR COORDINATION
02	2025.01.07	ISSUED FOR COORDINATION
01	2024.12.06	ISSUED FOR COORDINATION



**simmonds ARCHITECTURE**  
340 Catherine Street  
Ottawa, ON K1R 1C4  
613.567.7888  
simmondsarch.com

PROJECT:  
SERENVITA WELLNESS SPA  
2605&2707 SOLANDT ROAD, OTTAWA, ON

DRAWING TITLE:  
ELEVATIONS

DATE:	2026.01.15	DRAWING No:
SCALE:	AS NOTED	
DRAWN BY:	CSA	
JOB No:	878-24	