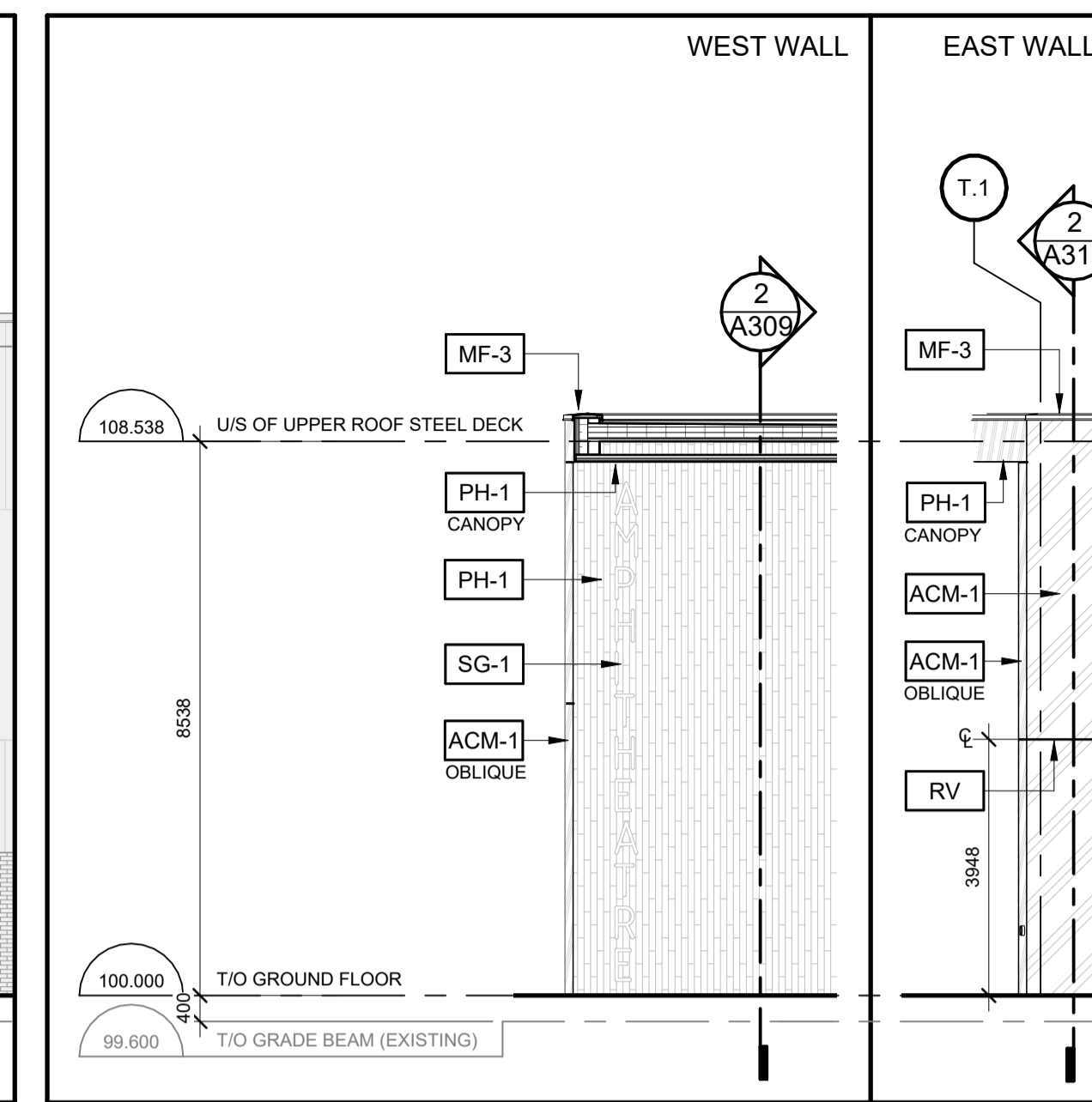
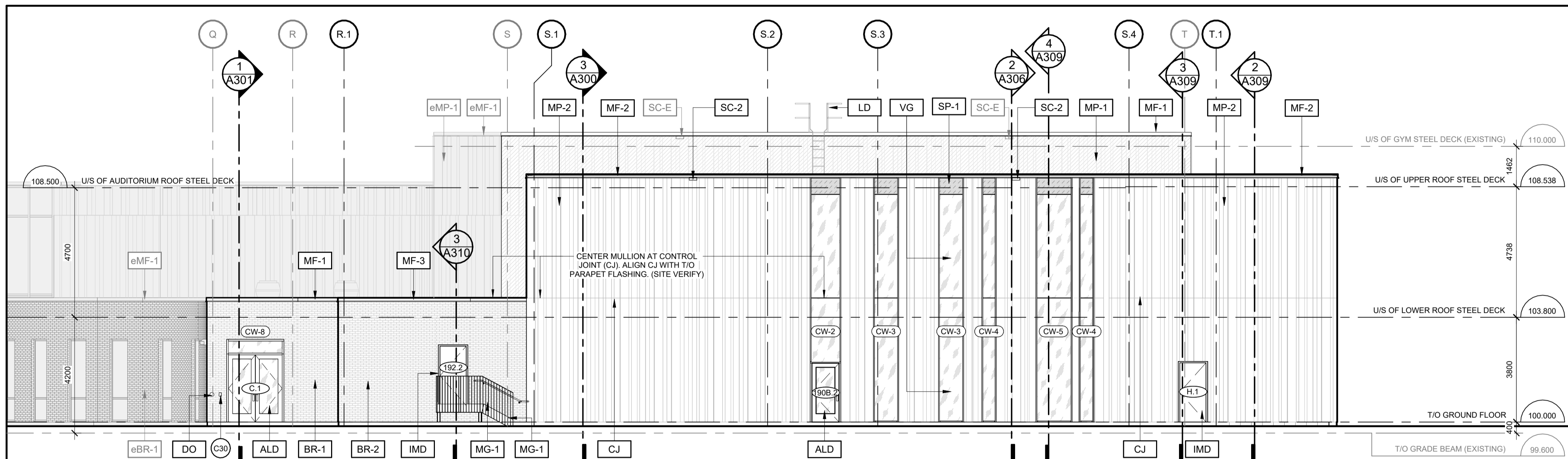


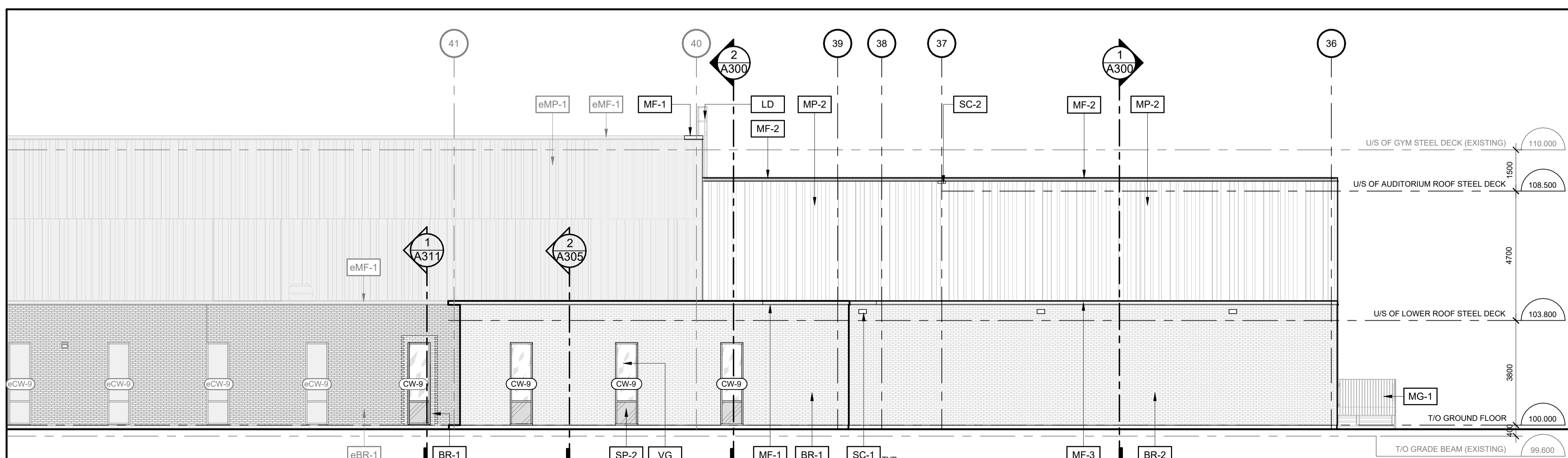
1 SOUTH ELEVATION - NEW WORK
A201 1:100



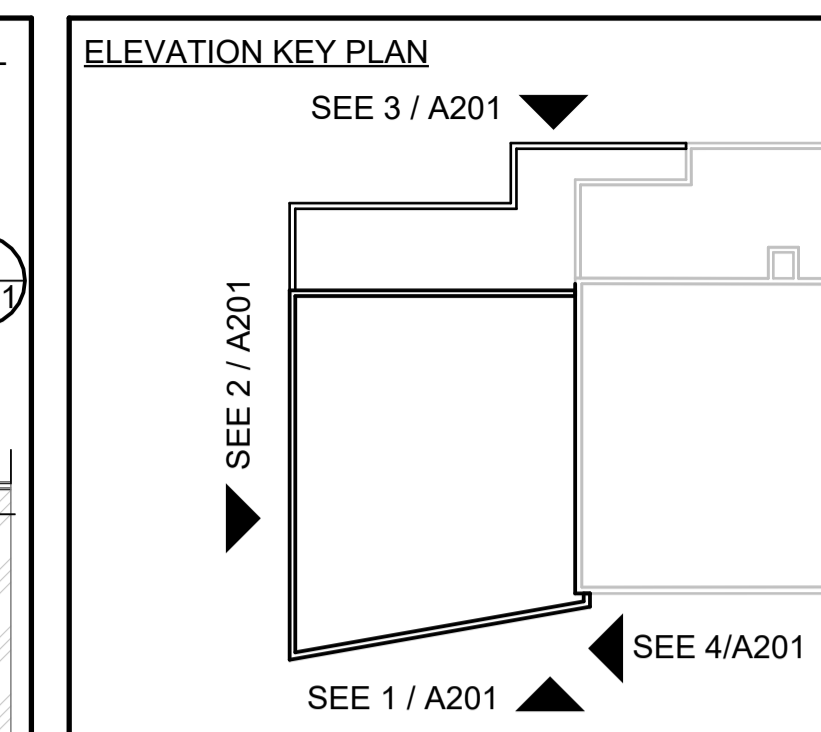
4 CANOPY WALL ELEVATIONS
A201 1:100



2 WEST ELEVATION - NEW WORK
A201 1:100



3 NORTH ELEVATION - NEW WORK
A201 1:100



ELEVATION KEY PLAN

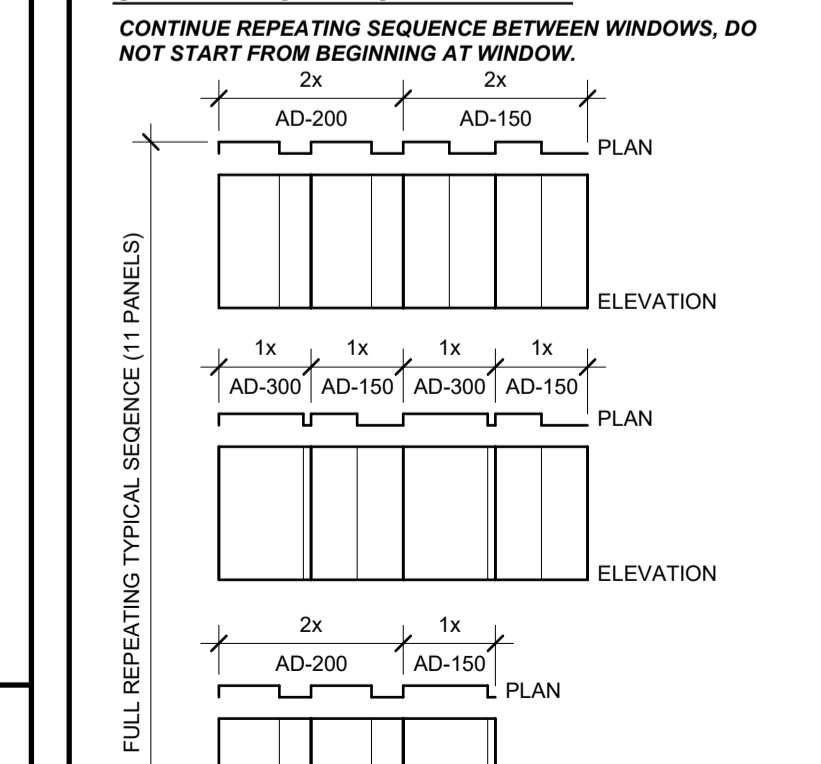
NEW MATERIAL LEGEND

- BRICK TYPE 1 (HOMOGENEOUS)
- PREFINISHED PROFILED METAL PANELS
- AREA OF EXISTING PREFINISHED PROFILED METAL PANELS TO BE REMOVED, SALVAGED, CUT AS NEEDED AND REINSTATED TO ALLOW THE ENVELOPE AND STRUCTURAL TIE-IN TO THE EXISTING BUILDING
- ALUMINUM COMPOSITE PANEL
- PHENOLIC TYPE 1 (WOOD DECOR)
- CLEAR VISION GLASS PANEL
- INSULATED GLAZED SPANDREL PANEL
- INSULATED ALUMINUM SPANDREL PANEL
- WINDOW FILM, REFER TO CURTAIN WALL ELEVATION A210a, FINISH PLANS AND SPECIFICATIONS
- NOT IN CONTRACT
- EXISTING BRICK TO REMAIN
- EXISTING PREFINISHED PROFILED METAL PANELS TO REMAIN

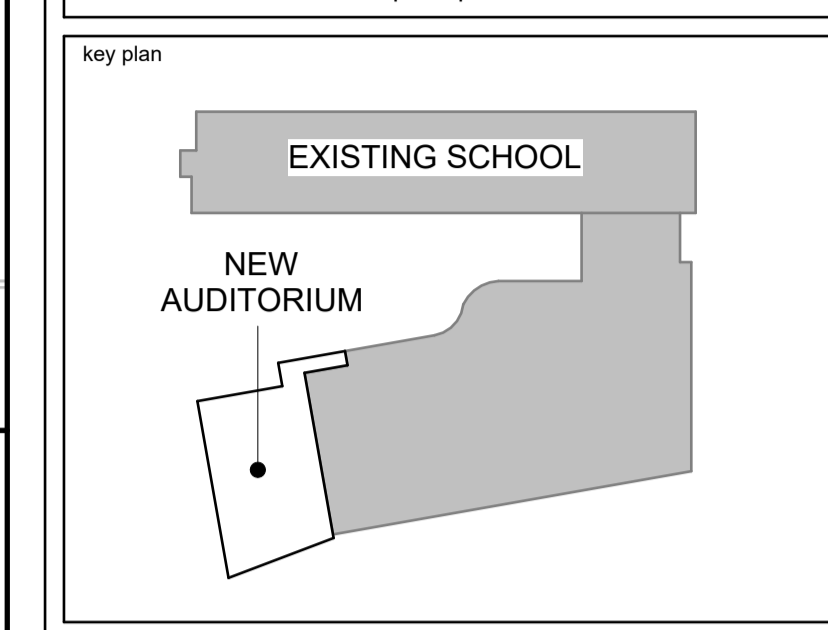
KEYNOTE LEGEND

- ACM-1 ALUMINUM COMPOSITE PANEL (FINISH)
- ACM-2 ALUMINUM COMPOSITE PANEL (FINISH)
- ALD PREFINISHED ALUMINUM ENTRANCE DOOR, CLEAR ANODIZED
- BR-1 BRICK TYPE 1 TO TIE-IN TO THE EXISTING BRICK (HOMOGENOUS BRICK - BEIGE)
- BR-2 BRICK TYPE 1 (HOMOGENOUS BRICK - BLACK DIAMOND VELOUR)
- C30 CARD READER, REFER TO ELECTRICAL
- CJ STEEL CLADDING CONTROL JOINT, ALIGN WITH ADJACENT CURTAIN WALL MULLION AS ILLUSTRATED
- DOOR OPERATOR
- eBR-1 EXISTING BRICK TYPE 1 TO REMAIN (HOMOGENOUS BRICK - BEIGE)
- eBR-2 EXISTING BRICK TYPE 2 TO REMAIN (HOMOGENOUS BRICK - CHARCOAL)
- eMF-1 EXISTING PREFINISHED METAL CAP FLASHING TO REMAIN (GREY)
- eMP-1 EXISTING PREFINISHED METAL PANELS TO REMAIN (COMBINATION OF GREYS)
- FN-1 BENT PIECE OF ALUMINUM FIN
- IMD INSULATED HOLLOW METAL DOOR, COLOUR TO MATCH ADJACENT CLADDING
- LD ROOF ACCESS LADDER
- MF-1 PREFINISHED METAL CAP FLASHING TO REMAIN (GREY TO MATCH EXISTING FLASHING)
- MF-2 PREFINISHED METAL CAP FLASHING (BRUSHED STAINLESS TO MATCH METAL PANEL)
- MF-3 PREFINISHED METAL CAP FLASHING (CHARCOAL TO MATCH ACM-1)
- MG-1 METAL GRATING STAIR FULLY GALVANIZED AND PAINTED BLACK
- MP-1 REINSTATED PREFINISHED METAL PANELS, CONTRACTOR TO TAKE NOTE OF PATTERN AND REINSTATE IN SAME ORDER
- MP-2 PREFINISHED METAL PANELS (BRUSHED STAINLESS)
- PH-1 PHENOLIC VERTICAL PLANK (TYPE 1 - WOOD DECOR)
- RV ACM REVEAL, ALIGN AND CENTER AS INDICATED
- SC-1 PREFINISHED METAL SCUPPER (COLOUR TBD)
- SC-2 PREFINISHED METAL SCUPPER (COLOUR TBD)
- SC-E EXISTING METAL SCUPPER TO REMAIN
- SG-1 SIGNAGE (I.I.C.)
- SP-1 INSULATED GLAZED SPANDREL PANELS (WHITE)
- SP-2 INSULATED ALUMINUM COMPOSITE SPANDREL PANELS (CHARCOAL)
- VG CLEAR VISION GLASS PANEL

TYPICAL METAL PANEL SEQUENCE UNLESS NOTED OTHERWISE:



Plan Number: 1945 File Number: D07-12-26-0003



APPROVED
By Sole Soyak at 4:11 pm, May 15, 2026

S. Soyak

**SOLE SOYAK
PLANNER II
PLANNING, DEVELOPMENT AND BUILDING SERVICES
DEPARTMENT, CITY OF OTTAWA**

no.	date	revision/issue	by
5	March 23, 2026	Reissued for Site Plan Control Application	CJ
4	March 20, 2026	Issued for 99% Review	CJ
3	February 09, 2026	Issued for 66% Review	CJ
2	January 16, 2026	Issued for Site Plan Control Application	CJ
1	December 19, 2025	Issued for 33% Review	CJ

PROVENCHER ROY

PROVENCHER ROY ASSOCIATES ARCHITECTS INC. T 613 886 6339
47 Rue Clarence, Suite 440 T 613 886 6339
OTTAWA, ONTARIO, CANADA K1N 8K1 PROVENCHERROY.CA

**JAMES B. LENNOX & ASSOCIATES
LANDSCAPE ARCHITECTS**

**CUNLIFFE & ASSOCIATES
CONSULTING STRUCTURAL ENGINEERS**

**LRL
MULTIDISCIPLINARY
PROFESSIONAL CONSULTANTS**

professional stamp
**ONTARIO ASSOCIATION
OF
ARCHITECTS**
Carolyn M. Jones
CAROLYN M. JONES
LICENCE
6087

project title
**ESP PIERRE-DE-BLOIS
AUDITORIUM ADDITION**

Project Address 1310 Chapman Mills Drive, Nepean, ON K2J 6L9

drawing title
**BUILDING ELEVATIONS -
NEW WORK**

date	March 20, 2026	job. no.	2622
scale	As indicated	drawing no.	A201
drawn	RL		
approved	PD		
plot date	2026-03-23 11:22:19 AM		

1. DO NOT SCALE FROM THIS DRAWING
2. CONTRACTOR TO VERIFY ALL DIMENSIONS AND NOTIFY THE ARCHITECT OF ANY DISCREPANCIES BEFORE WORK COMMENCES
3. THIS DRAWING TO BE READ IN CONJUNCTION WITH THE FOLLOWING DRAWINGS: STRUCTURAL, MECHANICAL, ELECTRICAL