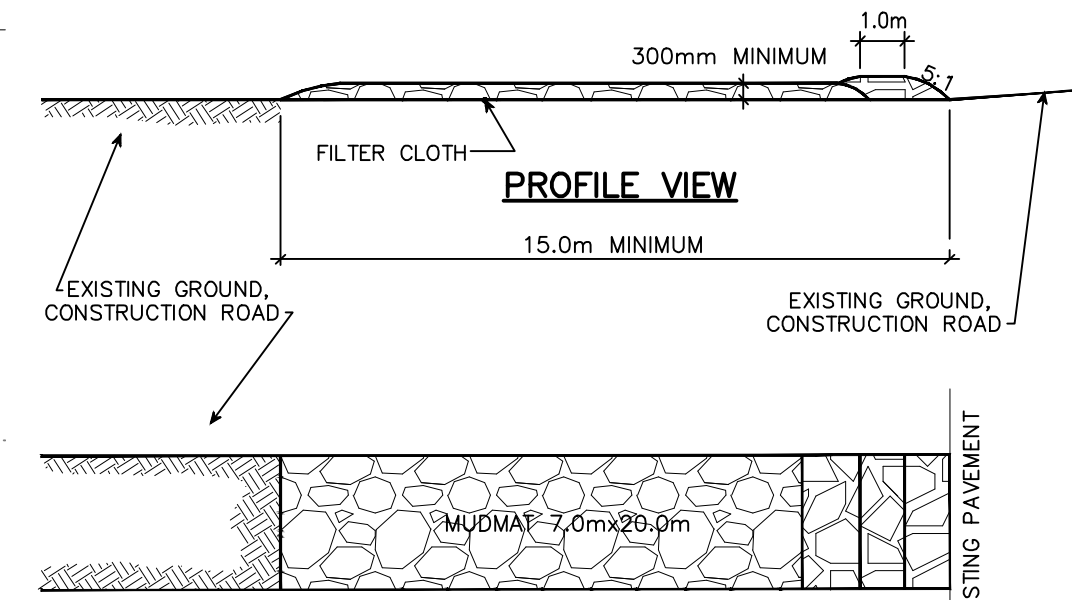
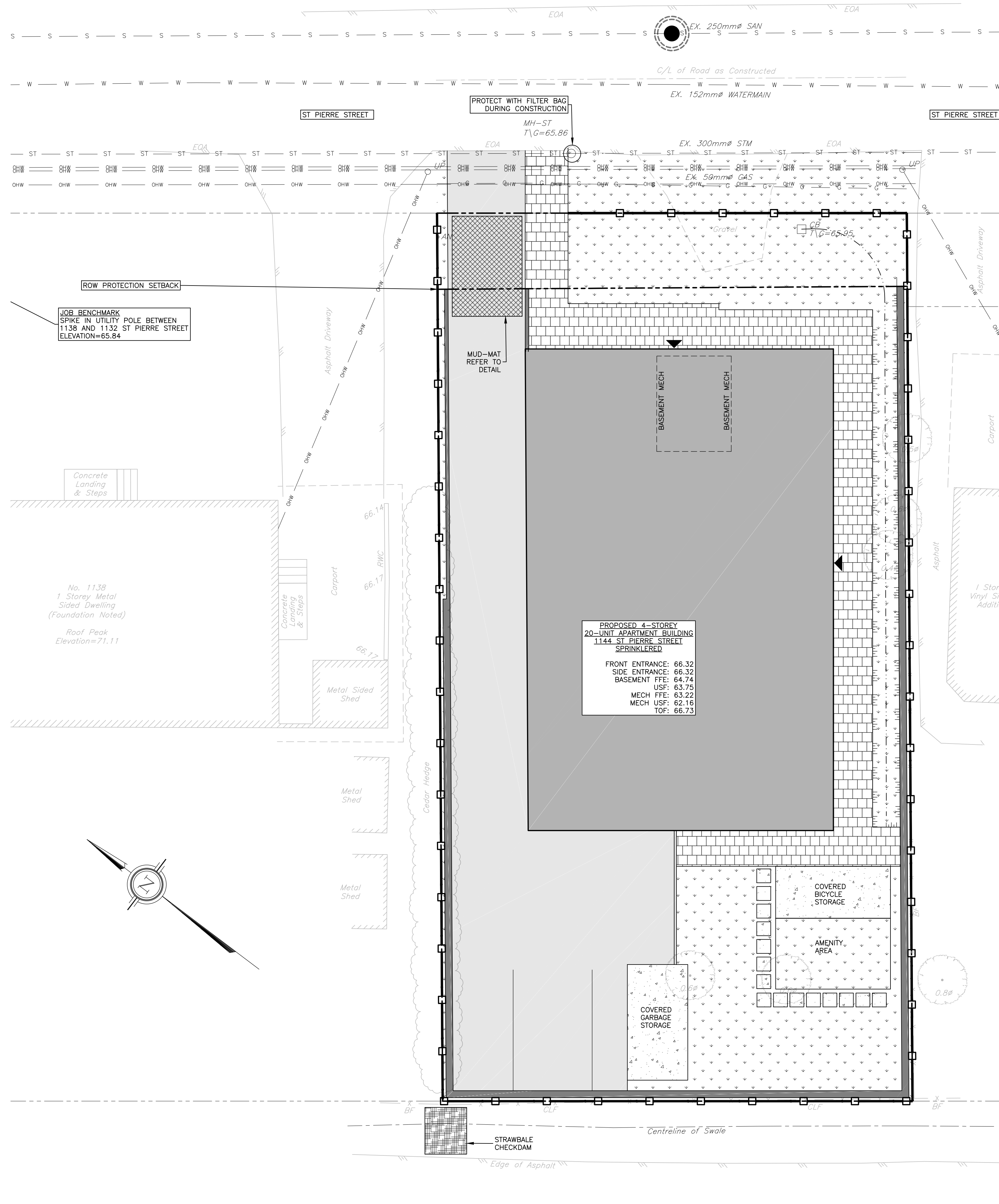


EROSION AND SEDIMENT CONTROLS DURING CONSTRUCTION.

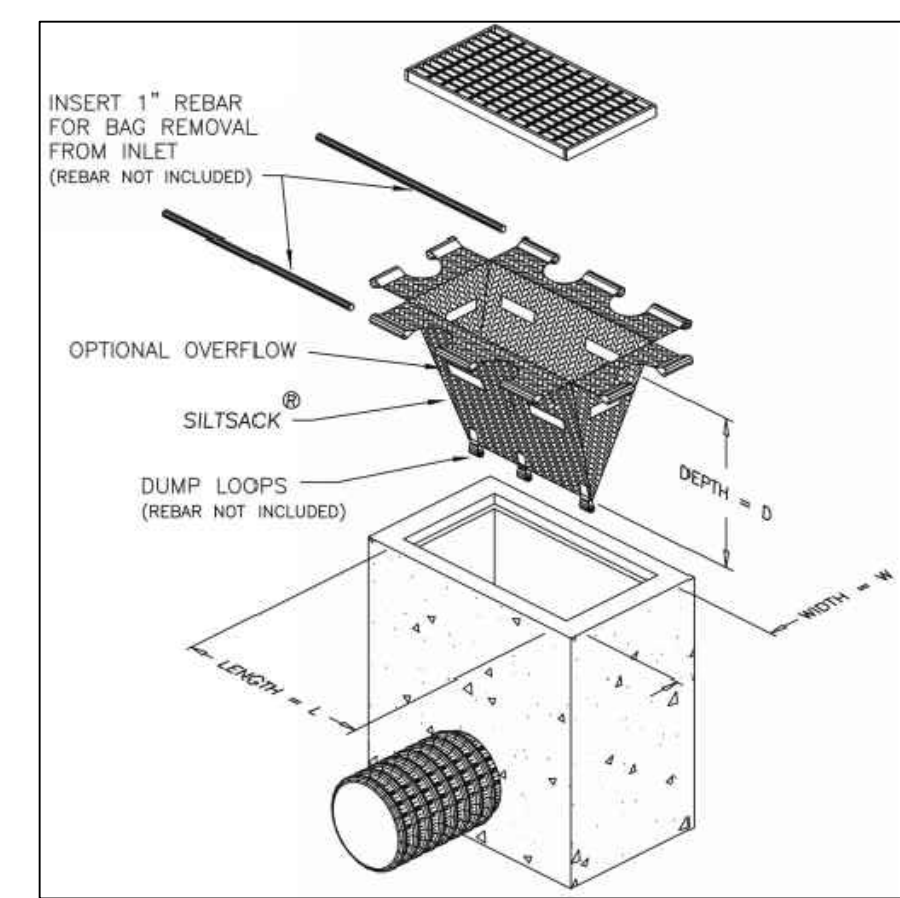
DURING ALL CONSTRUCTION ACTIVITIES, EROSION AND SEDIMENTATION SHALL BE CONTROLLED BY THE FOLLOWING TECHNIQUES:

1. LIMITING THE EXTENT OF EXPOSED SOILS AT ANY GIVEN TIME.
2. REVEGETATION OF EXPOSED AREAS AS SOON AS POSSIBLE.
3. MINIMIZATION OF AREA TO BE CLEARED AND DISRUPTION TO ADJACENT AREAS.
4. INSTALLATION OF FILTER CLOTH BETWEEN FRAME AND COVER ON ALL PROPOSED CATCH BASINS AND CATCH BASIN MANHOLES.
5. A SILT FENCE TO BE INSTALLED 0.3m INSIDE THE SITE PROPERTY LINE TO LOCATIONS SHOWN ON THIS DRAWING.
6. A VISUAL INSPECTION SHALL BE COMPLETED DAILY ON SEDIMENT CONTROL BARRIERS AND ANY DAMAGE REPAIRED IMMEDIATELY. CARE WILL BE TAKEN TO PREVENT DAMAGE DURING CONSTRUCTION OPERATIONS.
7. IN SOME CASES SOME BARRIERS MAY BE REMOVED TEMPORARILY TO ACCOMMODATE THE CONSTRUCTION OPERATIONS. THE AFFECTED BARRIERS WILL BE REINSTATED AT NIGHT WHEN CONSTRUCTION IS COMPLETED.
8. THE SEDIMENT CONTROL DEVICES WILL BE CLEANED OF ACCUMULATED SILT AS REQUIRED. THE DEPOSITS WILL BE DISPOSED OF AS PER THE REQUIREMENTS OF THE CONTRACT.
9. DURING THE COURSE OF CONSTRUCTION IF THE ENGINEER BELIEVES THAT ADDITIONAL PREVENTION METHODS ARE REQUIRED TO CONTROL EROSION AND SEDIMENTATION, THE CONTRACTOR WILL INSTALL ADDITIONAL SILT FENCES OR OTHER METHODS AS REQUIRED TO THE SATISFACTION OF THE ENGINEER.
10. CONSTRUCTION AND MAINTENANCE REQUIREMENTS FOR EROSION AND SEDIMENT CONTROLS TO COMPLY WITH ONTARIO PROVINCIAL STANDARD SPECIFICATION (OPSS) OPSS 805, AND CITY OF OTTAWA SPECIFICATIONS.
11. SEDIMENT AND EROSION CONTROL MEASURES MAY BE MODIFIED IN THE FIELD AT THE DISCRETION OF THE CITY OF OTTAWA SITE INSPECTOR OR CONSERVATION AUTHORITY.

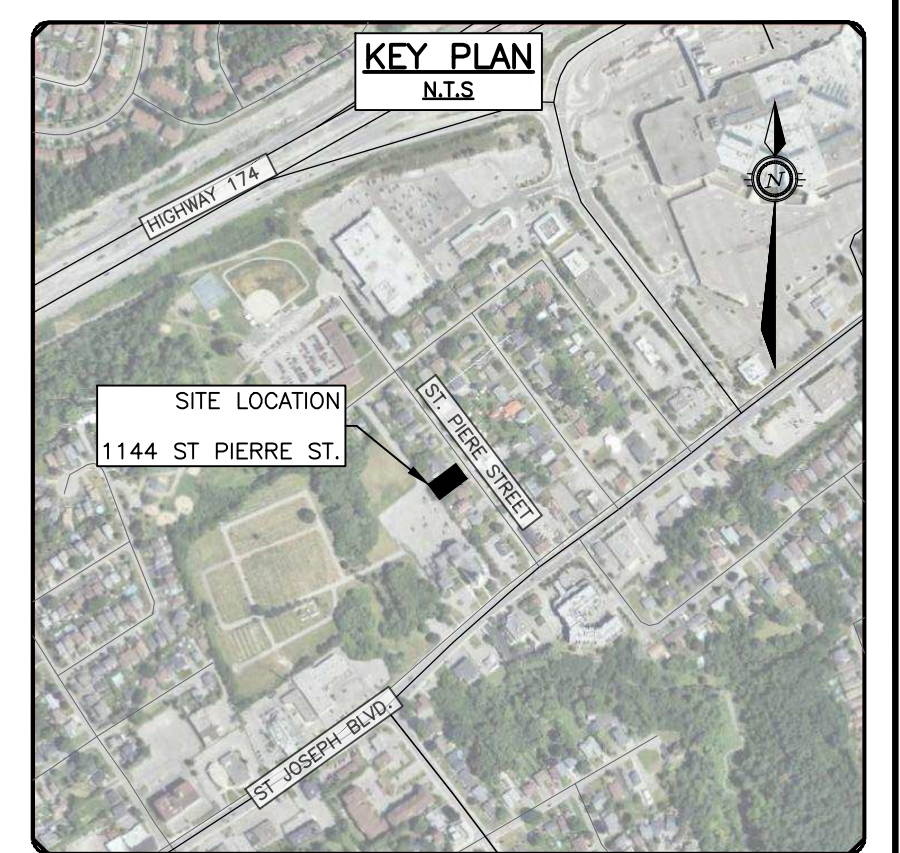


- NOTES:**
1. STONE - USE CLEAR CRUSHED 100mm STONE.
 2. LENGTH - AS REQUIRED BUT NOT LESS THAN 15.0m.
 3. THICKNESS - NOT LESS THAN 300mm.
 4. WIDTH - 7.0m MINIMUM, NOT LESS THAN THE WIDTH AT POINTS WHERE INGRESS OR EGRESS OCCURS.
 5. FILTER CLOTH - WILL BE PLACED OVER THE ENTIRE AREA PRIOR TO PLACING STONE.
 6. MAINTENANCE - THE ENTRANCE SHALL BE MAINTAINED IN A CONDITION WHICH WILL PREVENT TRACKING OR FLOWING OF SEDIMENT ONTO PUBLIC RIGHT-OF-WAY. THIS MAY REQUIRED PERIODIC TOP DRESSING WITH ADDITIONAL STONE AS CONDITIONS DEMAND AND REPAIR AND/OR CLEAN OUT OF ANY MEASURES USED TO TRAP SEDIMENT. ALL SEDIMENT SPILLED, DROPPED OR TRACKED ONTO THE PUBLIC RIGHT-OF-WAY MUST BE REMOVED IMMEDIATELY.
 7. PERIODIC INSPECTION AND NEEDED MAINTENANCE SHALL BE PROVIDED AFTER EACH RAIN.

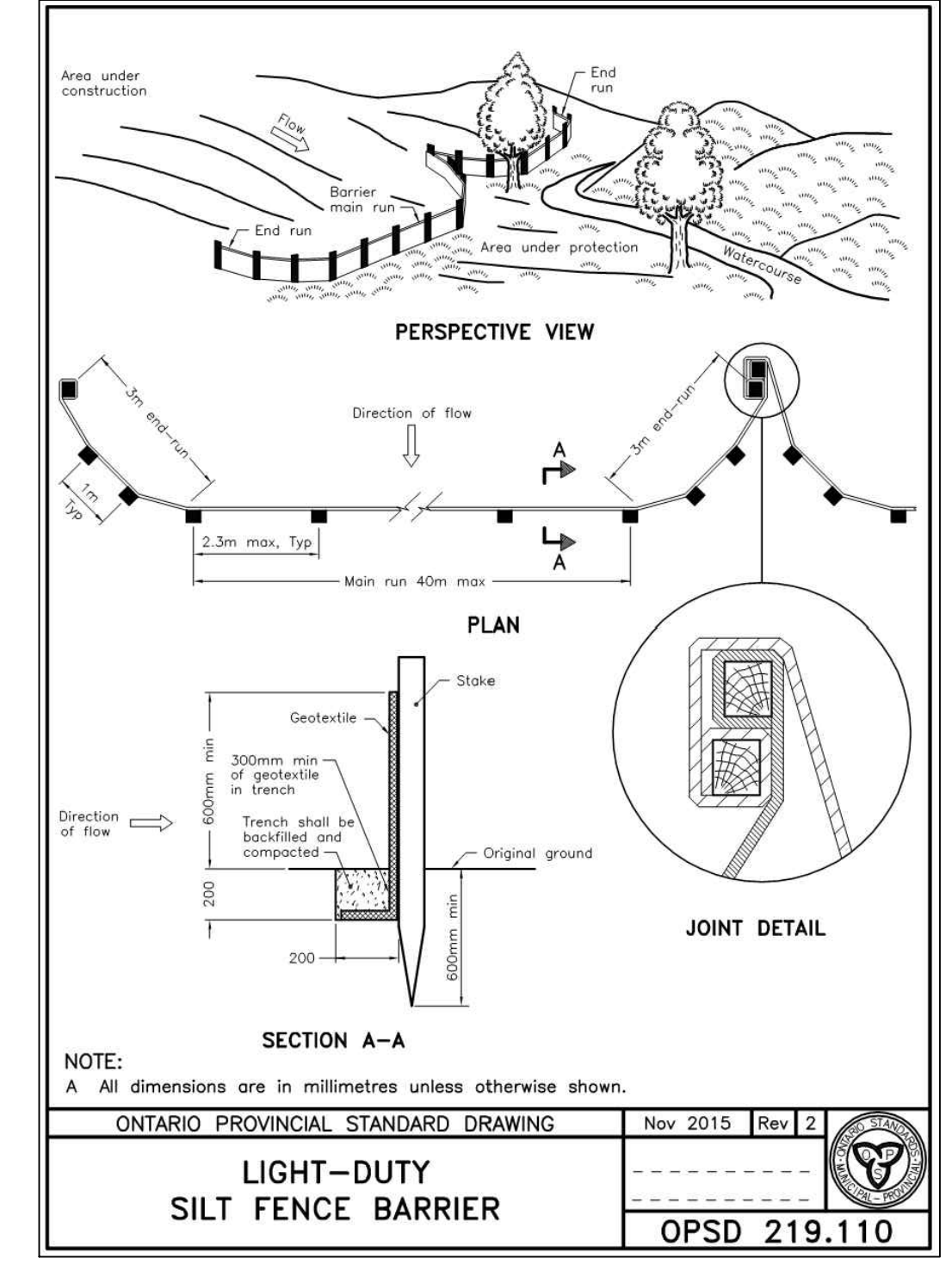
MUD MAT DETAIL



LEGEND



- LEGEND**
- PROPERTY LINE
 - - - ABUTTING PROPERTY LINE
 - - - EX. OF ROAD
 - EX. RETAINING WALL
 - - - EX. FENCE
 - - - EX. ELEVATION
 - - - EX. OVERHEAD WIRE
 - - - EX. UTILITY POLE AND ANCHOR
 - - - EX. GAS
 - - - EX. CATCHBASIN
 - - - EX. STORM MANHOLE
 - - - EX. SANITARY MANHOLE
 - - - EX. STORM SEWER
 - - - EX. SANITARY SEWER
 - - - EX. WATER MAIN
 - - - SILT FENCE
 - STRAWBALE CHECKDAM
 - MUD MAT
 - PROP. STORM/SANITARY MANHOLE

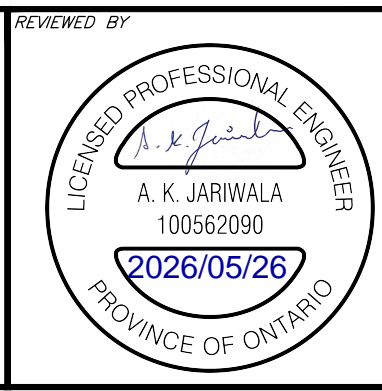
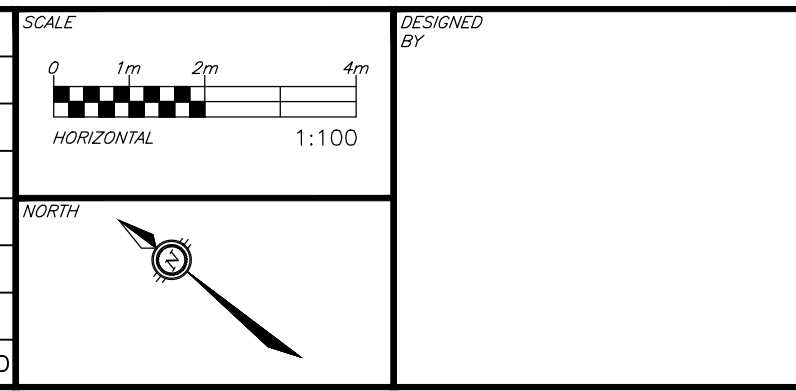


- NOTES:**
1. WOVEN WIRE FENCE TO BE FASTENED SECURELY TO WOOD POSTS WITH WIRE TIES OR STAPLES.
 2. POSTS TO BE SPACED AT 2.3 METRES CENTRE TO CENTRE.
 3. WHEN TWO SECTIONS OF FILTER CLOTH ADJOIN EACH OTHER THEY SHALL BE OVERLAPPED BY A MINIMUM OF 500mm.
 4. MAINTENANCE SHALL BE PERFORMED AS NEEDED AND MATERIAL REMOVED WHEN "BULGES" DEVELOP IN THE SILT FENCE.
 5. WOOD POSTS TO BE HARDWOOD TYPE (50mm x 50mm).
 6. GEOTEXTILE TO BE EMBEDDED 200mm INTO GROUND.
 7. GEOTEXTILE TO CONFORM TO OPSS 805 STANDARDS.
 8. SILT FENCE MUST BE INSTALLED BEFORE COMMENCEMENT OF CONSTRUCTION AND IN ACCORDANCE WITH DETAIL. SILT FENCE CAN BE REMOVED AFTER LANDSCAPING IS COMPLETE.
 9. SEDIMENTS MUST BE CLEARED AWAY WHEN THEY REACH HALF THE HEIGHT OF THE FENCE.

CAUTION
THE POSITION OF ALL POLE LINES, CONDUITS, WATERMANS, SEWERS AND OTHER UNDERGROUND AND OVERGROUND UTILITIES AND STRUCTURES IS NOT NECESSARILY SHOWN ON THE CONTRACT DRAWINGS, AND WHERE SHOWN, THE ACCURACY OF THE POSITION OF SUCH UTILITIES AND STRUCTURES IS NOT GUARANTEED. BEFORE STARTING WORK, DETERMINE THE EXACT LOCATION OF ALL SUCH UTILITIES AND STRUCTURES AND ASSUME ALL LIABILITY FOR DAMAGE TO THEM.

JOB BENCH MARK
SPIKE IN UTILITY POLE ELEVATION = 65.84
TOPOGRAPHIC INFORMATION
LOT 27 WEST SIDE ST. PIERRE STREET REGISTERED PLAN 86 CITY OF OTTAWA
TOPOGRAPHIC INFORMATION PROVIDED BY ANNIS, O'SULLIVAN, VOLLEBECK LTD.
SURVEY DATED NOVEMBER 13, 2025
- BEARINGS ARE GRID, DERIVED FROM CAN-NET 2016 REAL TIME NETWORK GPS OBSERVATIONS AND ARE REFERENCED TO SPECIFIED CONTROL POINTS 01919680184 AND 019198434761, MTM ZONE 9 (7630 WEST LONGITUDE) NAD-83 (ORIGINAL).
- ELEVATIONS SHOWN ARE GEODETIC, DERIVED FROM CITY OF OTTAWA CONTROL MONUMENT NO. 2016-0027, HAVING A PUBLISHED ELEVATION OF 61.165 METRES, AND ARE REFERRED TO THE COVD28 GEODETIC DATUM. IT IS THE RESPONSIBILITY OF THE USER OF THIS INFORMATION TO VERIFY THAT THE JOB BENCHMARK HAS NOT BEEN ALTERED OR DISTURBED AND THAT ITS RELATIVE ELEVATION AND DESCRIPTION AGREES WITH THE INFORMATION SHOWN ON THIS DRAWING.

REV	REVISION DESCRIPTION	DATE	BY	APPD	REV	REVISION DESCRIPTION	DATE	BY	APPD
2	RE-ISSUED FOR SPA	25/05/26	AGJ	AKJ					
1	ISSUED FOR SPA	23/12/25	AGJ	AKJ					



CLIENT
12542340 CANADA LIMITED
135 LAURIER AVE W, SUITE 100
OTTAWA, ON, 1K1 5J2
613.612.3288

exp.
exp Services Inc.
1-813-688-1899 | 1-613-225-7330
3025 Coopersville Drive, Unit 100
Ottawa, ON K2B 8R6
Canada
www.exp.com
• BUILDINGS • EARTH & ENVIRONMENT • ENERGY •
• INDUSTRIAL • INFRASTRUCTURE • SUSTAINABILITY •

DESIGNED BY	CHECKED BY	PROJECT MANAGER	APPROVED BY
AGJ	AGJ	AKJ	AKJ

PROJECT
1144 ST PIERRE
1144 ST PIERRE STREET
OTTAWA, ONTARIO.

PROJECT NO.
OTT-25011125-AG

DATE
2025-11-13

DRAWING NO.
C300

PROJECT TITLE
EROSION AND SEDIMENT CONTROL PLAN

File Name: \\exp\share\proj\12542340\12542340_25011125-AG.dwg
 User: jjarawal/27/2025 2:36:54 PM
 Last Printed: 5/25/2026 4:18:37 PM
 Plotter: HP-DesignJet-4440CPS
 Plot Style: exp.ctb
 Reference: \\exp\share\proj\12542340\12542340_25011125-AG.dwg
 Layer: 0 - SITE PLAN.dwg
 1144 st pierre - civil - 2025-03-06 - Issued for Ag

