







# ROOF PLAN NOTES

- 1 LOCATION OF EXISTING ROOF LADDER.
- 2 LINE OF PARAPET.
- 3 LINE OF WALL BELOW
- 4 WHITE ULTRAPLY TPO MEMBRANE BY FIRESTONE. REFER TO ROOF TYPE SCHEDULE & SPECIFICATIONS.
- 5 LOCATION OF EXISTING OVERFLOW SCUPPER.
- 6 EXISTING ROOF DRAIN. REFER TO MECHANICAL.
- 7 H.V.A.C. UNITS AND EXHAUST FANS BY LANDLORD AS PER MECHANICAL DRAWINGS. PROVIDE CURB WHERE REQUIRED. REFER TO DETAIL 2/A4.0.
- 8 EXISTING METAL CAP FLASHING TO REMAIN.
- 9 LINE OF EXISTING HIGH PARAPET WALL BY LL. REFER TO STRUCTURAL AND DETAIL ON SHEET A7.2.
- 10 PROVIDE SLEEPERS FOR WALK-IN COOLER/FREEZER CONDENSER. SLEEPERS TO SPAN ACROSS JOISTS BELOW. REFER TO DETAIL 2/A4.0. ROOF OPENING, CURBS, WATERPROOFING BY LL AS REQUIRED PER MANUFACTURER SPECIFICATIONS AND MECHANICAL DRAWINGS. CONDENSING LINE BY GC. TO BE COORDINATED WITH MANUFACTURER (NORBEC).
- 11 RESERVED
- 12 RESERVED
- 13 ROOF TOP MOUNTED ELECTRICAL TRANSFORMER AND CURBS BY LANDLORD. REFER TO ELECTRICAL DRAWINGS.
- 14 ROOF OPENING BY LANDLORD FOR ACCESS OF PIPES & WIRES.
- 15 EXISTING TPO WALK WAY PADS OR X-TREADS BY LL.
- 16 LANDLORD TO PROVIDE & INSTALL 3M NON-SLIP TAPE ON FLASHING AT LADDER LOCATION.
- 17 LL TO PROVIDE CRICKETS AT ALL HVAC UNITS AS REQUIRED TO PROVIDE POSITIVE DRAINAGE.
- 18 EXISTING WALL ENDS WRAPPED WITH BLACK METAL SIDING.
- 19 EXISTING TPO ROOF MEMBRANE ON BACK OF HIGH/LOW PAPRAPETS, REFER TO DETAIL 1/7.2
- 20 EXISTING TAPERED INSULATION.
- 21 EXISTING 305mm X 305mm PRE-FINISHED METAL VENTED LOUVER AT HIGH PARAPET BY LANDLORD.
- 22 EXISTING ROOFTOP SCREENING BY LANDLORD.
- 23 PRE-MANUFACTURED MESH-BOX BUMP-OUT TO BE SUPPLIED BY TDL AND INSTALLED BY GC. LANDLORD TO PROVIDE POWER AND BACKING PER LL'S P.ENG STAMPED STRUCTURAL DRAWINGS. REFER TO MANUFACTURER DRAWINGS FOR INSTALLATION DETAILS AND ELECTRICAL.
- 24 EXTERIOR C-CHANNEL LIGHT AROUND PERIMETER OF BUILDING SUPPLIED BY TDL & INSTALLED BY G.C. REFER TO ELECTRICAL DRAWINGS & EQUIPMENT PLAN ON SHEET A2.
- 25 LED STRIP LIGHTING AROUND PERIMETER OF OVERHANG. REFER TO ELECTRICAL DRAWINGS & ELEVATIONS FOR LOCATION.
- 26 RESERVED
- 27 EXISTING ROOF BY LL TO REMAIN. PATCH AND REPAIR AS REQUIRED. MAKE GOOD, WEATHERPROOF TO MATCH EXISTING.
- 28 RESERVED
- 29 PLUMBING VENT AS PER MECHANICAL DRAWINGS TO BE COORDINATED WITH LL. LL TO PROVIDE OPENING, WATERPROOFING, AND CURB AS REQUIRED.

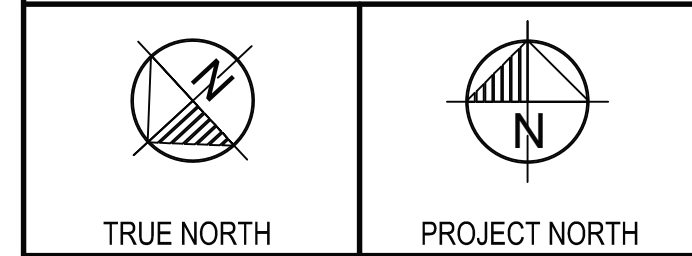
# SYMBOL LEGEND

- (A) DETAIL NUMBER
- (A4.0) DRAWING NUMBER
- 1 NOTE REFERENCE

ISSUE TABLE		
NO.	DATE	DESCRIPTION
01	2025-09-12	INITIAL SK1 FOR REVIEW
02	2025-09-22	INITIAL SK2 FOR REVIEW
03	2025-09-24	INITIAL SK3 FOR REVIEW
04	2025-09-25	PRE-CON SUBMISSION
05	2025-10-20	INITIAL SK5 FOR REVIEW
REVISIONS		
NO.	DATE	DESCRIPTION
06	2025-10-29	INITIAL SK6 FOR REVIEW
07	2025-11-19	SITE PLAN UPDATED FOR REVIEW
08	2025-12-17	SITE PLAN APPLICATION

This drawing is owned by or licensed for use by Tim Hortons (or its affiliated or related companies) and may not be reproduced, used, downloaded, disseminated, published or transferred in any form or by any means, except with the prior written consent of Tim Hortons. Copyright infringement is a violation of federal law subject to criminal and civil penalties.

The Contractor is to verify all dimensions and conditions on the project and to report any discrepancies to the Tim Hortons Representative prior to commencing work. These drawings are not to be used for construction purposes unless indicated by Tim Hortons as "issued for construction".



nicholascaragianisarchitect inc.  
 137 Pamela Street, Ottawa ON K1S 3K9  
 t: 613 237 6801 f: 613 237 8289 ncarhitect.ca

PROJECT / PROJECT  
**Tim Hortons**

STORE TYPE

LOCATION  
 2300 BANK STREET,  
 OTTAWA  
 ONTARIO

DRAWING TITLE  
**ROOF PLAN & DETAILS**

DRAWN BY SH	CHECKED CC
SCALE 1:50	DATE SEPT 2025
PROJECT NO. 122191	DRAWING NO. A4.0

## GENERAL NOTES

ALL ROOFING TO BE IN STRICT ACCORDANCE WITH THE ONTARIO BUILDING CODE AND THE (C.R.C.A.) CANADIAN ROOFING CONTRACTORS ASSOCIATION ROOFING MANUAL.

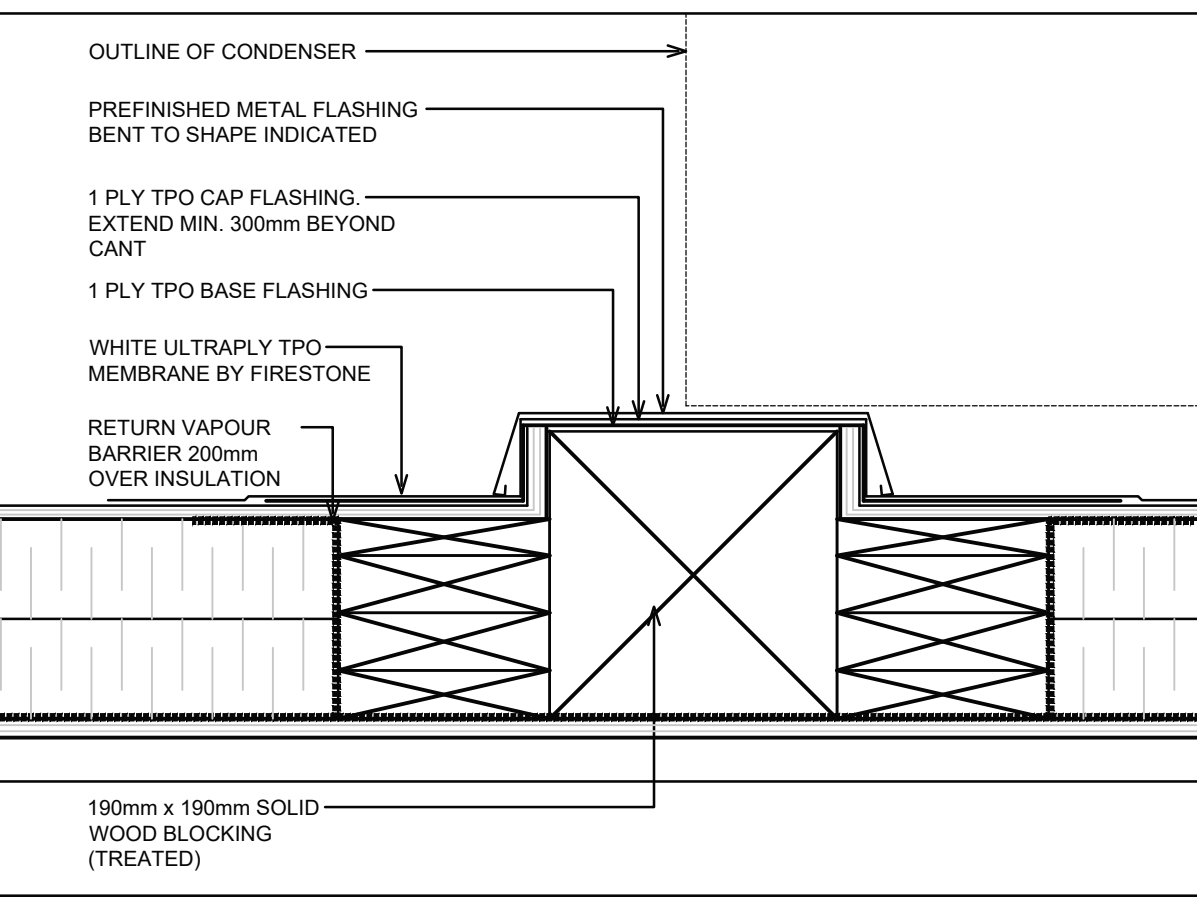
G.C. IS RESPONSIBLE FOR ENSURING THAT ALL ROOF OPENINGS ARE SEALED DURING THE ENTIRE LENGTH OF CONSTRUCTION. PROVIDE NEW AND MODIFIED ROOF OPENINGS FOR NEW EXHAUST HOODS AS REQUIRED. ALL ROOF OPENINGS, REINFORCEMENT, AND WATERPROOFING BY LL. REFER TO MECHANICAL DRAWINGS.

ALL ROOF DETAILS BY LL UNLESS NOTED OTHERWISE. ROOF ASSEMBLY BY MANUFACTURER & COMPLETE WITH MATERIAL AND LABOUR 5 YEAR WARRANTY. MANUFACTURERS TECHNICAL REPRESENTATIVE MUST MAKE A MINIMUM OF 3 SITE VISITS. ISSUE REPORTS & FINAL CERTIFICATE OF CONFORMITY FOR ROOF INSTALLS, PARAPETS, ROOF CURBS, VENT STACKS, ETC. ROOF SYSTEM MUST BE FULLY ADHERED, MECHANICALLY FASTENED & DESIGNED TO WITHSTAND WIND UPLIFT ALL AS PER MANUFACTURERS DESIGN RECOMMENDATIONS.

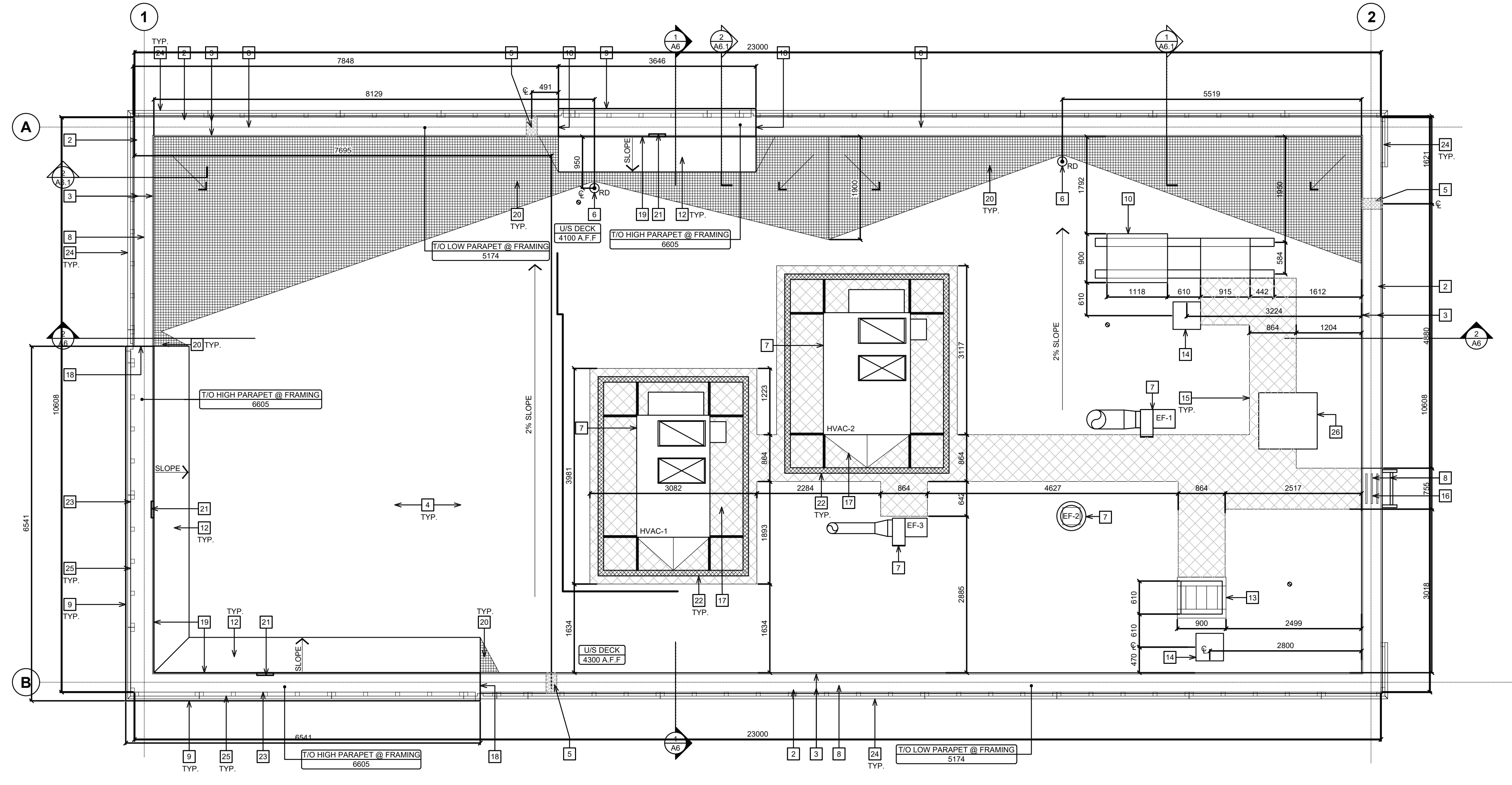
THIS DRAWING TO BE READ IN CONJUNCTION WITH MECHANICAL AND ELECTRICAL DRAWINGS.

## GENERAL NOTES

G.C. TO COORDINATE HEIGHT OF THE ROOF WITH LANDLORD. ENSURE ALL THE SUB-TRADES ARE MADE AWARE OF THE FINAL COORDINATED HEIGHT.



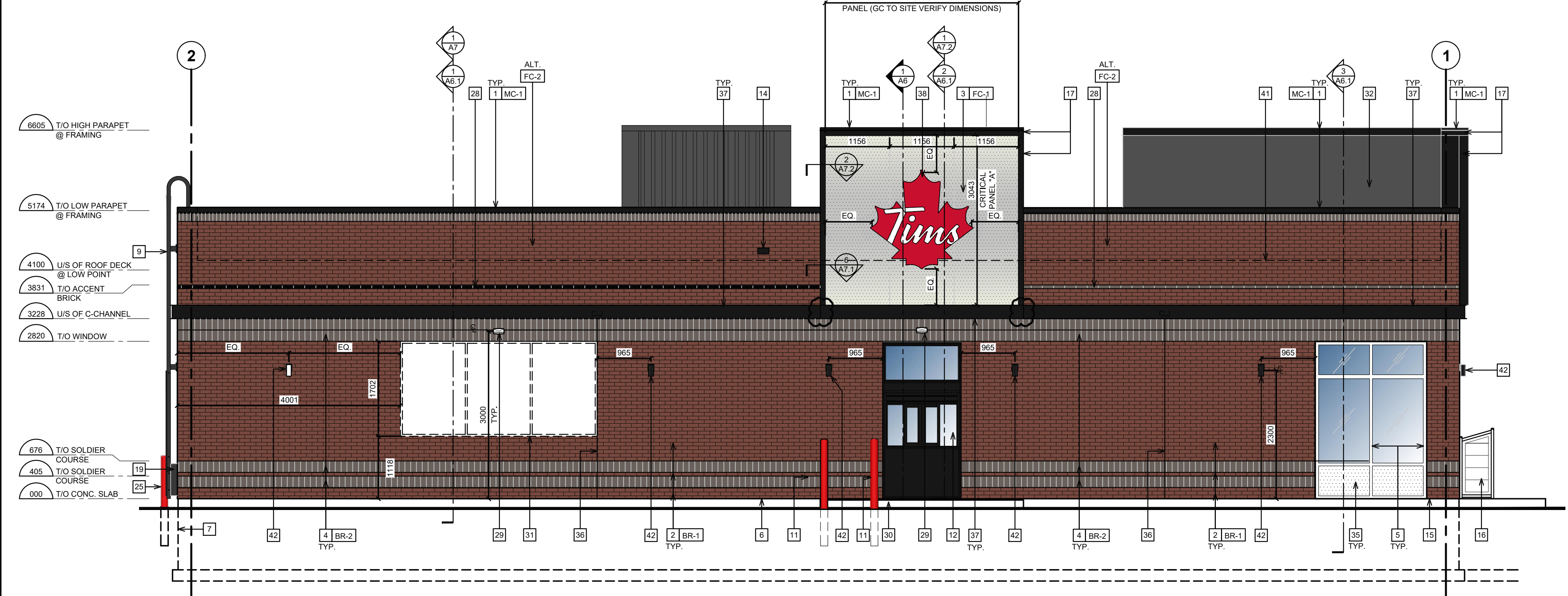
**2 TYPICAL SLEEPER DETAIL**  
 SCALE: 1:5



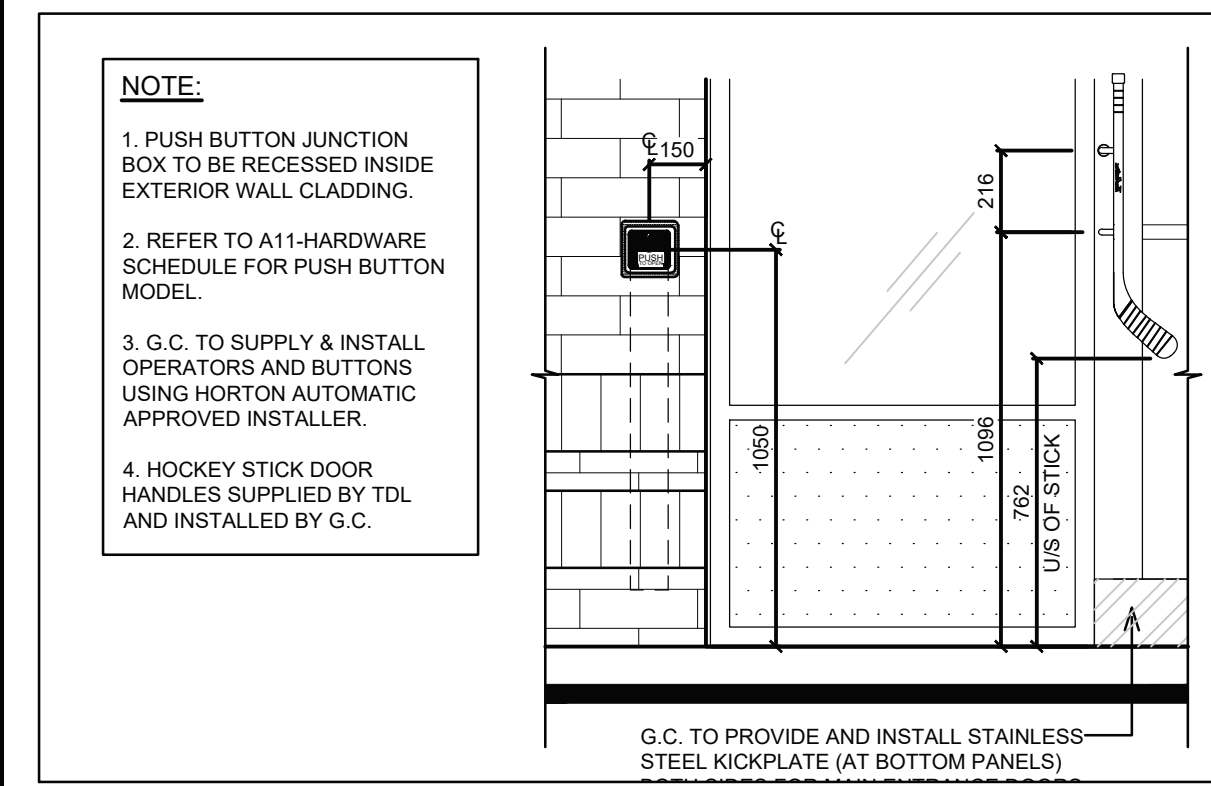
**1 ROOF PLAN**  
 SCALE: 1:50



**1 FRONT ELEVATION**  
SCALE: 1:50



**2 D/T ELEVATION**  
SCALE: 1:50



**3 ELEVATION @ DOOR OPERATOR**  
SCALE: 1:20

SYMBOL LEGEND	
	DETAIL NUMBER DRAWING NUMBER
	SECTION NUMBER DRAWING NUMBER
	KEY NOTE
	EXISTING REMOVED
	HATCH DENOTES AREA NOT IN SCOPE OF WORK UNLESS NOTED.
	HATCH DENOTES AREAS THAT ARE EXISTING. CLEAN AND PREPARE FOR NEW PAINT IF NOTED.

**GENERAL NOTES**

- REFER TO EXTERIOR FINISH SCHEDULE FOR CAULKING COLOUR.
- THE CONTRACTOR SHALL BECOME FAMILIAR WITH AND FOLLOW ALL DRAWINGS AND SPECIFICATIONS.

**MASONRY/MORTAR SPEC.**

- THE MORTAR COLOURING BY ROCKWOOD PIGMENTS. SEE FINISH SCHEDULE A5
- THE SPECIFICATIONS OF THE COLOURING MANUFACTURER ARE TO BE FOLLOWED.
- ALL BRICK JOINTS ARE TO BE RAKED 6mm DEEP.
- ALL BRICK MORTAR IS TO BE COLOURED AS SPECIFIED.
- ANY BRICK MASONRY WHICH DOES NOT MATCH THE APPROVED SPECIFICATION WILL BE REPLACED AT THE CONTRACTOR'S EXPENSE.
- THE CONTRACTOR SHALL BECOME FAMILIAR WITH AND FOLLOW ALL DRAWINGS AND SPECIFICATIONS.

**GENERAL NOTES**

G.C. TO COORDINATE HEIGHT OF THE ROOF WITH LANDLORD. ENSURE ALL THE SUB-TRADES ARE MADE AWARE OF THE FINAL COORDINATED HEIGHT.

EXTERIOR FINISH SCHEDULE			
TAG	PRODUCT	MANUF.	TYPE AND COLOUR
MC-1	PREFINISHED METAL FLASHING	FIRESTONE	FLASHING AT BRICK PARAPET: COLOUR: TO MATTE BLACK FLASHING AT FOUNDATION: COLOUR: MATTE BLACK ALL FLASHING AT WINDOWS IS TO BE MATTE BLACK FLASHING AT HIGH PARAPET FEATURE WALL: COLOUR: MATTE BLACK
FC-1	PERFORATED METAL LIGHTBOX FIXTURE	MONTREAL NEON	PERFORATED WHITE METAL OVER BLACK METAL PANELS FRAMED WITH BLACK ALUMINUM FRAME THAT EXTENDS TO GRADE. LED STRIPLIGHT TO CAST LIGHT ALONG PERIMETER OF PERFORATED METAL. NOTE: REFER TO EXTERIOR ELEVATIONS FOR PANEL SIZE (PANEL A OR PANEL B)
FC-2	CUSTOM FINISHED EXTRUDED ALUMINIUM SIDING	KNOTWOOD (SUPPLIED BY HJC)	6" FLAT SIDING PROFILE (WITH APPROVED CUSTOM FINISH) G.C. TO TOUCH UP IN FIELD. EXTRUDED ALUMINUM OUTSIDE/INSIDE CORNER PIECES, COVERS AND JOINTS WITH APPROVED CUSTOM FINISH. COLOUR: 'CANADIAN SHIELD' NOTE: TO BE INSTALLED IN STAGGERED PATTERN TO AVOID ALIGNED VERTICAL JOINTS.
BR-1	BRICK	ENDICOTT CLAY PRODUCTS	MODULAR FACE BRICK 94mm D x 57mm H x 194mm L. COLOUR: MEDIUM IRONSPOT 77, SMOOTH FINISH, RUNNING BOND. MORTAR: SM730, BRIARWOOD
BR-1.1	TIM STONE (PRIMARY FIELD BRICK)	SHOULDICE	TIM STONE-RED VELVET RUNNING BOND * ONLY TO BE USED IN WESTERN CANADA (SK, AB, BC) WHEN APPROVED BY TH DESIGN
BR-2	BRICK (ACCENT)	ENDICOTT CLAY PRODUCTS	MODULAR FACE BRICK 94mm D x 57mm H x 194mm L. COLOUR: ENDICOTT DARK IRONSPOT, ARTISAN FINISH, SOLDIER COURSE. MORTAR: SM730, BRIARWOOD.
BR-2.1	TIM STONE (SOLDIE COURSE/ACCENT BAND)	SHOULDICE	TIM STONE-'HOT CHOCOLATE' ONLY TO BE USED IN WESTERN CANADA (SK, AB, BC) WHEN APPROVED BY TH DESIGN
P-08	PAINT - REAR DOOR / FRAME, LADDER & HANDRAIL	SHERWIN WILLIAMS	PAINT FOR EXTERIOR METALS. COLOUR: #SW 7069 'IRON ORE' - MIN. 2 FINISH COATS
P-17	PAINT - BOLLARD (ONLY PAINT IN CASE CAN'T USE THE COVER)	SHERWIN WILLIAMS	PAINT FOR BOLLARD. COLOUR: #SW 6968 'REAL RED' - MIN. 2 FINISH COATS
	CAULKING	FRANKLIN INTERNATIONAL	CAULKING TO MATCH COLOUR OF ADJACENT FINISHES
	C-CHANNEL PERIMETER INTEGRATED LIGHTING	MONTREAL NEON	CUSTOM LENGTH; COLOUR: BLACK.
	ANODIZED ALUMINUM WINDOW FRAMES, DOOR FRAMES, VESTIBULE FRAMES & DOORS, EXIT ONLY DOOR	ALUMICOR LIMITED OR APPROVED EQUIVALENT	ALUMINUM FINISH (CLASS 1, 7 MILS MINIMUM) ALUMINUM BLACK ANODIZED BY ALUMICOR. CAULKING BETWEEN WINDOW FRAMES/DOOR FRAMES & EXTERIOR CLADDING COLOUR TO MATCH WINDOW FRAMES (TREMCO DYMONIC), SPANDREL PANEL AT STORE FRONT (ALUMINUM BLACK ANODIZED).
	ANODIZED ALUMINUM (EXTERIOR STOREFRONT SWING DOORS ONLY)		7700 THERMAPORTE THERMALLY BROKEN DOOR SYSTEM (T600A WIDE STYLE WITH NO MID RAIL FINISH TO BE BLACK, HINGES AND DOOR PULL/PUSH TO BE BLACK, DOOR PULL: CUSTOM 'HOCKEY STICK' HANDLES
	WALL PACK		DARK GRAY TEXTURED PAINT
	SCONCE LIGHT		RUGGED CAST-ALUMINUM HOUSING 'BLACK'

**NOTE:**  
1. REFER TO SPECIFICATIONS ON SHEET SP4 FOR APPROVED SUPPLIERS LIST.  
2. FINISH SCHEDULE IS MASTER LIST OF APPROVED FINISHES FROM RBI. G.C TO DETERMINE / ESTABLISH WHICH FINISHES APPLY ON PROJECT TO PROJECT BASIS. NOT ALL FINISHES IN THIS SCHEDULE MAY BE APPLIED.

**EXTERIOR ELEVATION NOTES**

- EXISTING PREFINISHED METAL FLASHING. REFER TO EXTERIOR FINISH SCHEDULE. - BY LANDLORD
- EXISTING BRICK. REFER TO EXTERIOR FINISH SCHEDULE. - BY LANDLORD
- PANELS / BUMP-OUT FEATURE (REFER TO EXTERIOR FINISH SCHEDULE) INCLUDING ALL MOUNTING HARDWARE / HAT CHANNELS / LIGHTING / DRIVERS TO BE SUPPLIED BY TIM HORTONS AND INSTALLED BY G.C. REFER TO SHEET S09 FOR MANUFACTURER INSTALLATION DETAILS. REFER TO ELECTRICAL DRAWINGS FOR JUNCTION BOX LOCATION. G.C TO SITE VERIFY DIMENSIONS WITH MONTREAL NEON.
- EXISTING SOLDIER COURSE ACCENT BRICK - MODULAR SIZE. REFER TO EXTERIOR FINISH SCHEDULE. - BY LANDLORD
- EXISTING ANODIZED ALUMINUM FRAMES. REFER TO WINDOW SCHEDULE ON SHEET A11. - BY LANDLORD
- EXISTING EXPOSED FOUNDATION TO BE PARGED & FREE OF IMPERFECTIONS. - BY LANDLORD
- EXISTING POURED CONCRETE FOUNDATION. - BY LANDLORD
- 1067mm (42") HIGH ILLUMINATED SIGN MOUNTED ON EXTERIOR WALL CLADDING BY SIGN COMPANY. G.C. TO ENSURE TO PROVIDE ADEQUATE WOOD BLOCKING/BACKING FOR SIGNAGE SUPPORT (COORDINATE WITH SIGN MANUFACTURER), G.C TO COORDINATE WITH SIGN MANUFACTURER AND SIGN INSTALLER FOR LOCATION OF FASTENERS. REFER TO ELECTRICAL DRAWINGS. - BY LANDLORD
- ROOF ACCESS LADDER FOR EASTERN CANADA LOCATIONS. - BY LANDLORD
- EXISTING METAL PIPE RAILING. REFER TO DETAIL. - BY LANDLORD
- 150mm DIA. METAL BOLLARD FILL W/ CONCRETE CW BOLLARD COVER. REFER TO DETAIL 5/A7.1. - BY LANDLORD
- EXISTING DRIVE-THRU WINDOW WITH INSULATED PANEL. REFER TO DRIVE-THRU WINDOW SCHEDULE ON SHEET A11. - BY LANDLORD
- RESERVED.
- EXISTING OVERFLOW SCUPPER. REFER TO DETAIL. - BY LANDLORD
- EXISTING CONCRETE SIDEWALK (BY OTHERS). REFER TO SITE PLAN. - BY LANDLORD
- EXTERIOR RECYCLING UNIT SUPPLIED BY TDL GROUP CORP. & INSTALLED BY G.C.
- BUMP-OUT FEATURE (COLOUR/MATTE BLACK) SUPPLIED BY TIM HORTONS CW PREFINISHED METAL FLASHING BY G.C. G.C. TO COORDINATE WITH MONTREAL NEON FOR INSTALLATION. REFER TO DETAILS MARKED ON EXTERIOR ELEVATIONS.
- HWT CONCENTRIC VENT TO BE INSTALLED PRIOR TO EXT. CLADDING. EXACT LOCATION TO BE DETERMINED ON SITE. - BY LANDLORD
- EXISTING LOCATION OF GAS METER. REFER TO MECHANICAL DRAWINGS. - BY LANDLORD
- ANODIZED ALUMINUM (EXTERIOR STOREFRONT SWING DOORS). G.C TO INSTALL NEW 'HOCKEY STICK' DOOR HANDLES ON PULL SIDE (SUPPLIED BY TDL GROUP LTD). REFER TO WINDOW SCHEDULE ON SHEET A11. - BY LANDLORD
- LOCATION OF REMOTE SUCTION FOR GREASE INTERCEPTOR. REFER TO MECHANICAL DRAWINGS. - BY LANDLORD
- RESERVED.
- RESERVED.
- G.C. TO PROVIDE & INSTALL TWO (2) "NO-SMOKING WITHIN 7.5m" SIGNAGE AT ENTRIES/EXITS. CONFIRM SIZE, COLOUR & REQUIREMENTS AS PER SPECIFIC LOCAL CODES AND BYLAWS.
- RESERVED.
- G.C. TO PROVIDE & INSTALL STAINLESS STEEL KICK PLATE (AT BOTTOM PANELS) ON BOTH SIDES FOR MAIN ENTRANCE DOORS, VESTIBULE DOORS & EXIT DOORS. REFER TO EXTERIOR FINISH SCHEDULE. - BY LANDLORD
- COLUMN DOOR OPERATOR FOR BARRIER FREE DOORS (INSTALLED AT MIN. 150mm A.F.F. AND MAX 1100mm A.F.F.) REFER TO ELECTRICAL DRAWINGS AND DOOR/HARDWARE SCHEDULE ON SHEET A11. REFER TO DETAIL 3/A5 AND SHEETS A2. VERIFY WITH LOCAL CODE FOR PUSH BUTTON REQUIREMENTS. SUPPLIED AND INSTALLED BY LANDLORD. - BY LANDLORD
- EXISTING RUNNING BOND ACCENT BRICK - MODULAR SIZE. REFER TO EXTERIOR FINISH SCHEDULE. - BY LANDLORD
- EXISTING WALL PACK. REFER TO ELECTRICAL DRAWINGS. - BY LANDLORD
- G.C TO PROVIDE CONCRETE CURB ALONG DRIVE-THRU LANE. CURB TO PROJECT 200mm FROM FACE OF EXTERIOR CLADDING AND LENGTH OF CURB IS EXTENT OF FEATURE WALL. - BY LANDLORD
- EXTERIOR POP FRAMES (SUPPLIED AND INSTALLED BY OTHERS). G.C TO ENSURE TO PROVIDE ADEQUATE WOOD BLOCKING IN WALL. - BY LANDLORD
- EXISTING TPO ROOF MEMBRANE ON BACK OF PARAPET WALLS. REFER TO SPECIFICATIONS. - BY LANDLORD
- RESERVED.
- RESERVED.
- EXISTING INSULATED METAL PANEL (COLOR BLACK ANODIZED). REFER TO WINDOW SCHEDULE ON SHEET A11. - BY LANDLORD
- G.C TO PROVIDE CONTROL JOINT (AS PER MANUFACTURER SPECIFICATIONS) COMPLETE WITH BACKING ROD & SEALANT (SEALANT COLOUR TO MATCH COLOUR OF MORTAR). - BY LANDLORD
- G.C TO INSTALL NEW C-CHANNEL CW INTEGRATED PERIMETER LIGHTING ABOVE SOLDIER COURSE. LANDLORD TO PROVIDE POWER AND JUNCTION BOX FOR ELECTRICAL WIRING. REFER TO EXTERIOR FINISH SCHEDULE. LANDLORD TO COORDINATE DETAILS WITH MANUFACTURER & PROVIDE SUPPORT SYSTEM AS REQUIRED.
- 1728mm x 1728mm 'RED LEAF' ILLUMINATED SIGNAGE OVER DRIVE THRU WINDOW. SUPPLIED BY TDL & INSTALLED BY SIGN COMPANY. LANDLORD TO ENSURE TO PROVIDE ADEQUATE WOOD BLOCKING/BACKING FOR SIGNAGE SUPPORT (COORDINATE WITH SIGN MANUFACTURER), G.C TO COORDINATE WITH SIGN MANUFACTURER AND SIGN INSTALLER FOR LOCATION OF FASTENERS. REFER TO ELECTRICAL DRAWINGS.
- APPROXIMATE LOCATION OF PROVINCE STAMP BY SIGN COMPANY.
- EXTERIOR LED SIGN LIGHT. REFER TO ELECTRICAL DRAWINGS. - BY LANDLORD
- DASHED LINE INDICATES ROOF LINE.
- WALL SCONCE. REFER TO ELECTRICAL DRAWINGS. - BY LANDLORD

ISSUE TABLE		
NO.	DATE YYYY-MM-DD	DESCRIPTION
01	2025-09-12	INITIAL SK1 FOR REVIEW
02	2025-09-22	INITIAL SK2 FOR REVIEW
03	2025-09-24	INITIAL SK3 FOR REVIEW
04	2025-09-25	PRE-CON SUBMISSION
05	2025-10-20	INITIAL SK5 FOR REVIEW

REVISIONS		
NO.	DATE YYYY-MM-DD	DESCRIPTION
06	2025-11-19	INITIAL SK6 FOR REVIEW
07	2025-11-19	SITE PLAN UPDATED FOR REVIEW
08	2025-12-17	SITE PLAN APPLICATION

This drawing is owned by or licensed for use by Tim Hortons (or its affiliated or related companies) and may not be reproduced, used, downloaded, disseminated, published, or transferred in any form or by any means, except with the prior written consent of Tim Hortons. Copyright infringement is a violation of federal law subject to criminal and civil penalties.

The Contractor is to verify all dimensions and conditions on the project and to report any discrepancies to the Tim Hortons Representative prior to commencing work. These drawings are not to be used for construction purposes unless indicated by Tim Hortons as "issued for construction".

ONTARIO ASSOCIATION  
OF ARCHITECTS  
*N. Caragianis*  
NICHOLAS CARAGIANIS  
LICENCE  
5057

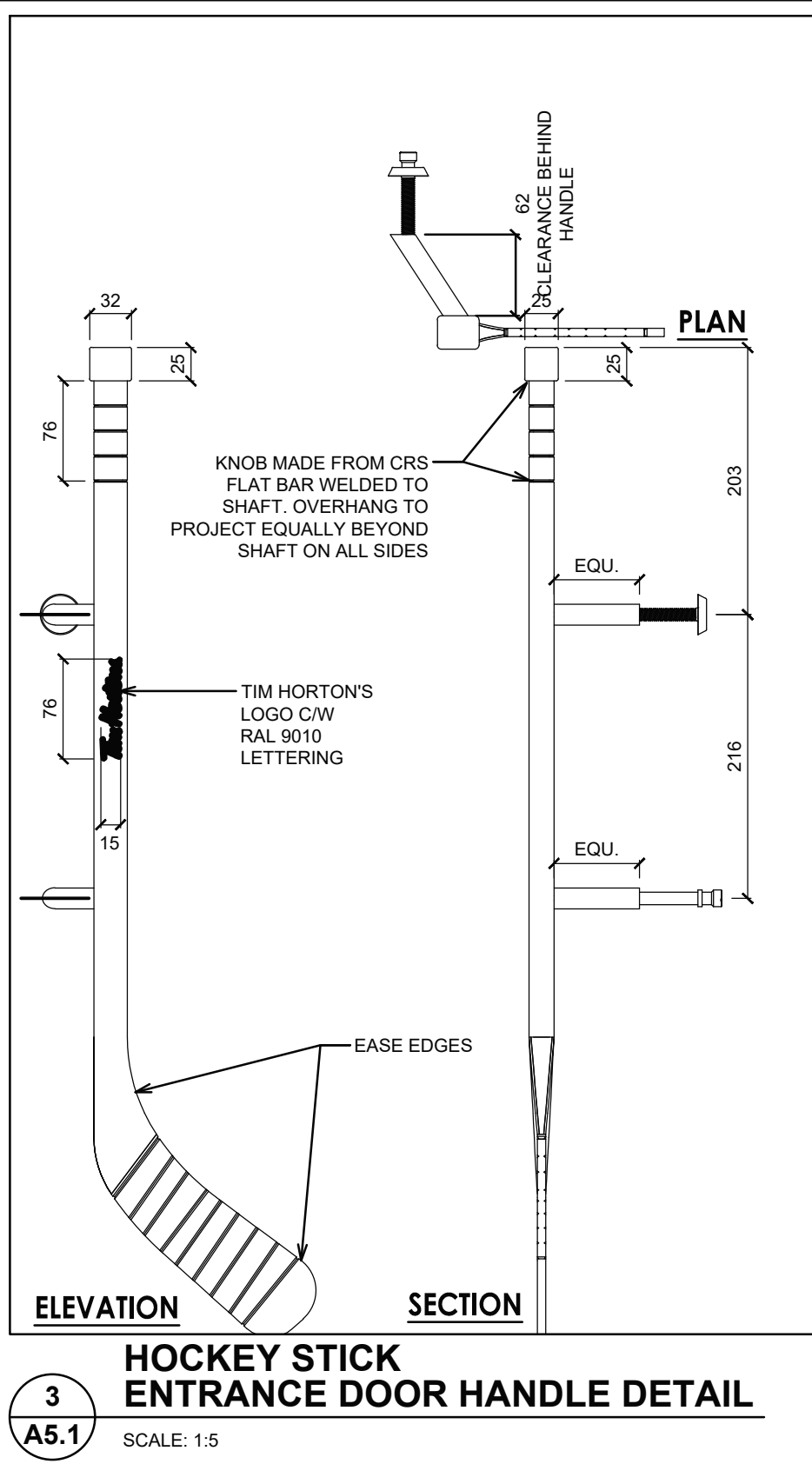
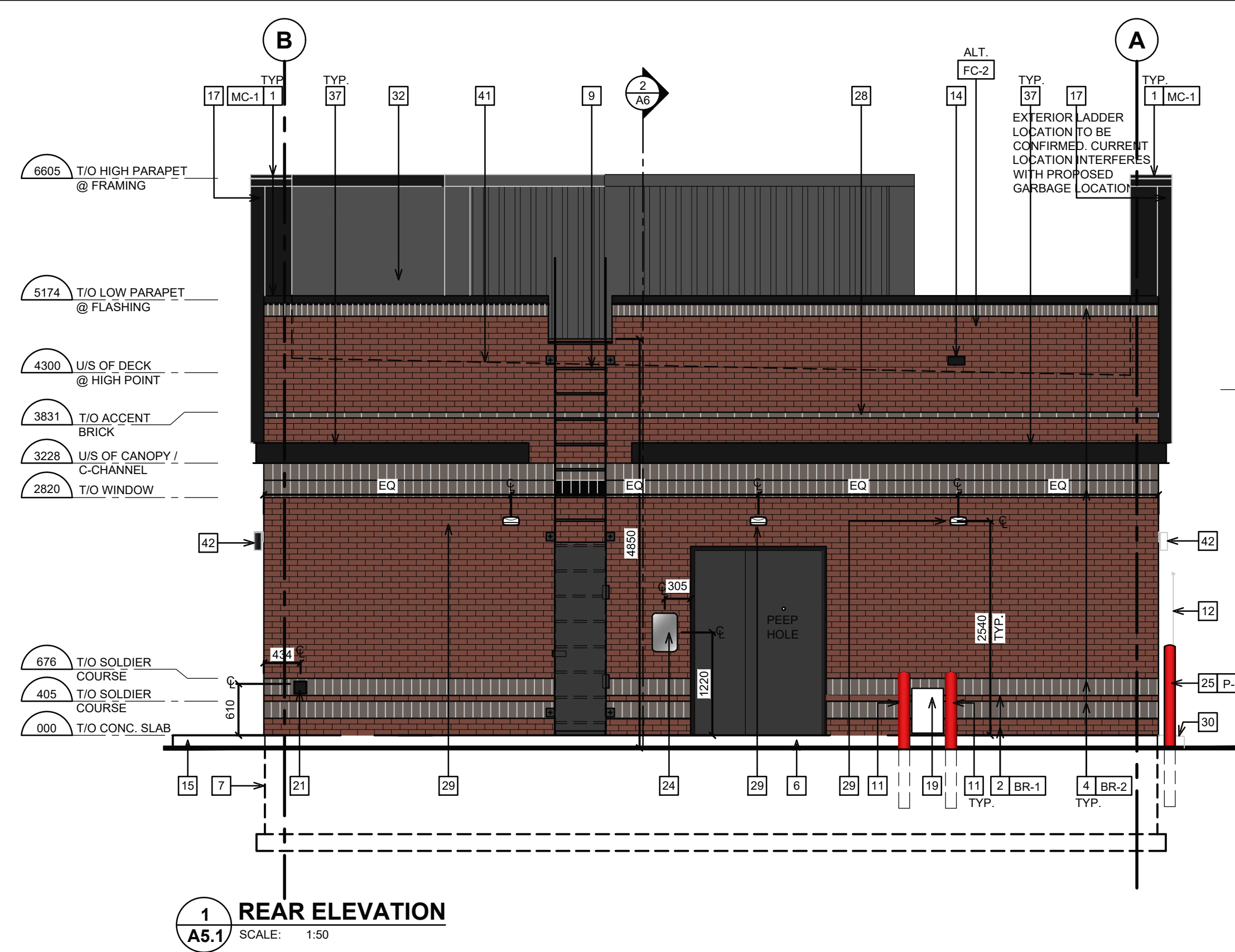
nicholascaragianisarchitect inc.  
137 Pamela Street, Ottawa ON K1S 3K9  
t: 613 937 6801 f: 613 937 8289 ncarhitect.ca

PROJECT / PROJECT  
*Tim Hortons*

LOCATION  
2300 BANK STREET,  
OTTAWA  
ONTARIO

DRAWING TITLE  
EXTERIOR ELEVATIONS

DRAWN BY	CHECKED
SH	CC
SCALE 1:50	DATE SEPT 2025
PROJECT NO. 122191	DRAWING NO. A5.0



EXTERIOR FINISH SCHEDULE			
TAG	PRODUCT	MANUF.	TYPE AND COLOUR
MC-1	PREFINISHED METAL FLASHING	FIRESTONE	FLASHING AT BRICK PARAPET - COLOUR: TO MATTE BLACK FLASHING AT FOUNDATION: COLOUR: MATTE BLACK ALL FLASHING AT WINDOWS IS TO BE MATTE BLACK FLASHING AT HIGH PARAPET FEATURE WALL: COLOUR: MATTE BLACK
FC-1	PERFORATED METAL LIGHTBOX FIXTURE	MONTREAL NEON	PERFORATED WHITE METAL OVER BLACK METAL PANELS FRAMED WITH BLACK ALUMINUM FRAME THAT EXTENDS TO GRADE. LED STRIPLIGHT TO CAST LIGHT ALONG PERIMETER OF PERFORATED METAL. PANEL SIZES: A. 1158mm (45.5"W) X 3048mm (120" HIGH) B. 1158mm (45.5"W) X 2235mm (88" HIGH) NOTE: REFER TO EXTERIOR ELEVATIONS FOR PANEL SIZE (PANEL A OR PANEL B)
FC-2	CUSTOM FINISHED EXTRUDED ALUMINUM SIDING	KNOTWOOD (SUPPLIED BY HJC)	6" FLAT SIDING PROFILE (WITH APPROVED CUSTOM FINISH) G.C. TO TOUCH UP IN FIELD. EXTRUDED ALUMINUM OUTSIDE/INSIDE CORNER PIECES, COVERS AND JOINTS WITH APPROVED CUSTOM FINISH. COLOUR: CANADIAN SHEILD NOTE: TO BE INSTALLED IN STAGGERED PATTERN TO AVOID ALIGNED VERTICAL JOINTS.
BR-1	BRICK	ENDICOTT CLAY PRODUCTS	MODULAR FACE BRICK 94mm D x 57mm H x 194mm L. COLOUR: MEDIUM IRONSPOT 77, SMOOTH FINISH, RUNNING BOND. MORTAR: SM730, BRIARWOOD
BR-1.1	TIM STONE (PRIMARY FIELD BRICK)	SHOULDICE	TIM STONE-RED VELVET RUNNING BOND ONLY TO BE USED IN WESTERN CANADA (SK, AB, BC) WHEN APPROVED BY TH DESIGN
BR-2	BRICK (ACCENT)	ENDICOTT CLAY PRODUCTS	MODULAR FACE BRICK 94mm D x 57mm H x 194mm L. COLOUR: ENDICOTT DARK IRONSPOT, ARTISAN FINISH, SOLDIER COURSE. MORTAR: SM730, BRIARWOOD.
BR-2.1	TIM STONE (SOLDIER COURSE/ACCENT BAND)	SHOULDICE	TIM STONE-HOT CHOCOLATE ONLY TO BE USED IN WESTERN CANADA (SK, AB, BC) WHEN APPROVED BY TH DESIGN
P-08	PAINT - REAR DOOR / FRAME, LADDER & HANDRAIL	SHERWIN WILLIAMS	PAINT FOR EXTERIOR METALS. COLOUR: #SW 7069 'IRON ORE' - MIN. 2 FINISH COATS
P-17	PAINT - BOLLARD (ONLY PAINT IN CASE CANT USE THE COVER)	SHERWIN WILLIAMS	PAINT FOR BOLLARD. COLOUR: #SW 6868 'REAL RED' - MIN. 2 FINISH COATS
	CAULKING	FRANKLIN INTERNATIONAL CAULKING	CAULKING TO MATCH COLOUR OF ADJACENT FINISHES
	C-CHANNEL PERIMETER INTEGRATED LIGHTING	MONTREAL NEON	CUSTOM LENGTH; COLOUR: BLACK.
	ANODIZED ALUMINUM (WINDOW FRAMES, DOOR FRAMES, VESTIBULE FRAMES & DOORS, EXIT ONLY DOOR)	ALUMCOR LIMITED OR APPROVED EQUIVALENT	ALUMINUM FINISH (CLASS 1, 7 MILS MINIMUM) ALUMINUM BLACK ANODIZED BY ALUMCOR. CAULKING BETWEEN WINDOW FRAMES/DOOR FRAMES & EXTERIOR CLADDING COLOUR TO MATCH WINDOW FRAMES (TREMCO DYMONIC), SPANDREL PANEL AT STORE FRONT (ALUMINUM BLACK ANODIZED).
	ANODIZED ALUMINUM (EXTERIOR STOREFRONT SWING DOORS ONLY)		7700 THERMAPORTE THERMALLY BROKEN DOOR SYSTEM (600A WIDE STILE WITH NO MID RAIL). FINISH TO BE BLACK. HINGES AND DOOR PULL/PUSH TO BE BLACK. DOOR PULL: CUSTOM 'HOCKEY STICK' HANDLES
	WALL PACK		DARK GRAY TEXTURED PAINT
	SCENCE LIGHT		RUGGED CAST-ALUMINUM HOUSING 'BLACK'

ISSUE TABLE		
NO.	DATE YYYYMMDD	DESCRIPTION
01	2025-09-12	INITIAL SK1 FOR REVIEW
02	2025-09-22	INITIAL SK2 FOR REVIEW
03	2025-09-24	INITIAL SK3 FOR REVIEW
04	2025-09-25	PRE-CON SUBMISSION
05	2025-10-20	INITIAL SK5 FOR REVIEW

REVISIONS		
NO.	DATE YYYYMMDD	DESCRIPTION
06	2025-10-29	INITIAL SK6 FOR REVIEW
07	2025-11-19	SITE PLAN UPDATED FOR REVIEW
08	2025-12-17	SITE PLAN APPLICATION

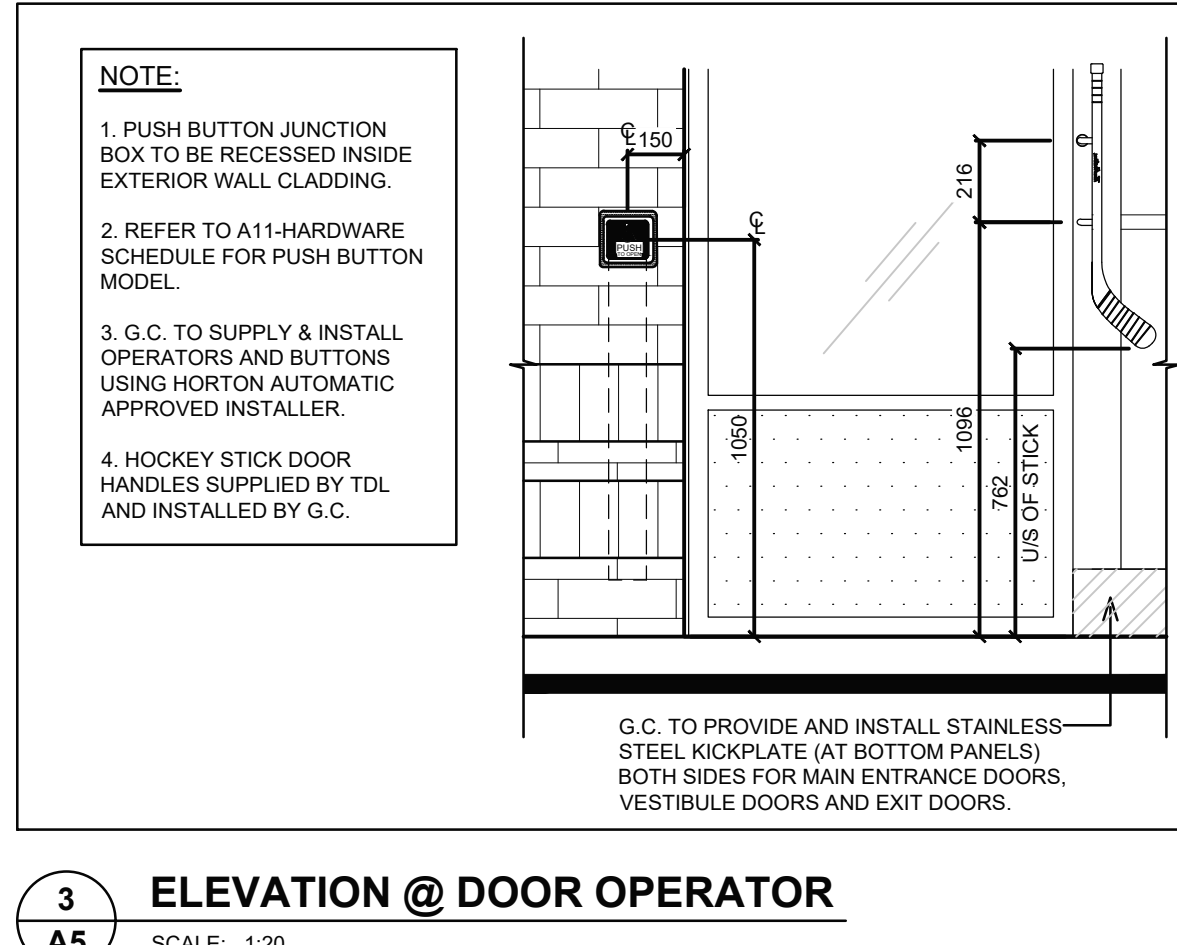
This drawing is owned by or licensed for use by Tim Hortons (or its affiliated or related companies) and may not be reproduced, used, downloaded, disseminated, published, or transferred in any form or by any means, except with the prior written consent of Tim Hortons. Copyright infringement is a violation of federal law subject to criminal and civil penalties.

The Contractor is to verify all dimensions and conditions on the project and to report any discrepancies to the Tim Hortons Representative prior to commencing work. These drawings are not to be used for construction purposes unless indicated by Tim Hortons as "issued for construction".

NOTE:  
1. REFER TO SPECIFICATIONS ON SHEET SP4 FOR APPROVED SUPPLIERS LIST.  
2. FINISH SCHEDULE IS MASTER LIST OF APPROVED FINISHES FROM RBL. G.C TO DETERMINE / ESTABLISH WHICH FINISHES APPLY ON PROJECT TO PROJECT BASIS. NOT ALL FINISHES IN THIS SCHEDULE MAY BE APPLIED.

### EXTERIOR ELEVATION NOTES

- EXISTING PREFINISHED METAL FLASHING. REFER TO EXTERIOR FINISH SCHEDULE. - BY LANDLORD
- EXISTING BRICK. REFER TO EXTERIOR FINISH SCHEDULE. - BY LANDLORD
- PANELS/ BUMP-OUT FEATURE (REFER TO EXTERIOR FINISH SCHEDULE) INCLUDING ALL MOUNTING HARDWARE/ HAT CHANNELS/ LIGHTING/ DRIVERS TO BE SUPPLIED BY TIM HORTONS AND INSTALLED BY G.C. REFER TO SHEET S09 FOR MANUFACTURER INSTALLATION DETAILS. REFER TO ELECTRICAL DRAWINGS FOR JUNCTION BOX LOCATION. G.C TO SITE VERIFY DIMENSIONS WITH MONTREAL NEON.
- EXISTING SOLDIER COURSE ACCENT BRICK - MODULAR SIZE. REFER TO EXTERIOR FINISH SCHEDULE. - BY LANDLORD
- EXISTING ANODIZED ALUMINUM FRAMES. REFER TO WINDOW SCHEDULE ON SHEET A11. - BY LANDLORD
- EXISTING EXPOSED FOUNDATION TO BE PARGED & FREE OF IMPERFECTIONS. - BY LANDLORD
- EXISTING POURED CONCRETE FOUNDATION. - BY LANDLORD
- 1067mm (42") HIGH ILLUMINATED SIGN MOUNTED ON EXTERIOR WALL. CLADDING BY SIGN COMPANY. G.C. TO ENSURE TO PROVIDE ADEQUATE WOOD BLOCKING/BACKING FOR SIGNAGE SUPPORT (COORDINATE WITH SIGN MANUFACTURER). G.C TO COORDINATE WITH SIGN MANUFACTURER AND SIGN INSTALLER FOR LOCATION OF FASTENERS. REFER TO ELECTRICAL DRAWINGS. - BY LANDLORD
- ROOF ACCESS LADDER - BY LANDLORD
- EXISTING METAL PIPE RAILING. REFER TO DETAIL. - BY LANDLORD
- 150mm DIA. METAL BOLLARD FILL W/ CONCRETE CW BOLLARD COVER. REFER TO DETAIL 51A7.1. - BY LANDLORD
- EXISTING DRIVE-THRU WINDOW WITH INSULATED PANEL. REFER TO DRIVE-THRU WINDOW SCHEDULE ON SHEET A11. - BY LANDLORD
- RESERVED.
- EXISTING OVERFLOW SCUPPER. REFER TO DETAIL. - BY LANDLORD
- EXISTING CONCRETE SIDEWALK (BY OTHERS). REFER TO SITE PLAN. - BY LANDLORD
- EXTERIOR RECYCLING UNIT SUPPLIED BY TDL GROUP CORP. & INSTALLED BY G.C.
- BUMP-OUT FEATURE (COLOUR MATTE BLACK) SUPPLIED BY TIM HORTONS CW PREFINISHED METAL FLASHING BY G.C. G.C TO COORDINATE WITH MONTREAL NEON FOR INSTALLATION. REFER TO DETAILS MARKED ON EXTERIOR ELEVATIONS.
- HWT CONCENTRIC VENT TO BE INSTALLED PRIOR TO EXT. CLADDING. EXACT LOCATION TO BE DETERMINED ON SITE. - BY LANDLORD
- EXISTING LOCATION OF GAS METER. REFER TO MECHANICAL DRAWINGS. - BY LANDLORD
- ANODIZED ALUMINUM (EXTERIOR STOREFRONT SWING DOORS). G.C TO INSTALL NEW 'HOCKEY STICK DOOR HANDLES' ON PULL SIDE (SUPPLIED BY TDL GROUP LTD). REFER TO WINDOW SCHEDULE ON SHEET A11. - BY LANDLORD
- LOCATION OF REMOTE SUCTION FOR GREASE INTERCEPTOR. REFER TO MECHANICAL DRAWINGS. - BY LANDLORD
- RESERVED.
- RESERVED.
- G.C TO PROVIDE & INSTALL TWO (2) "NO-SMOKING WITHIN 7.5m" SIGNAGE AT ENTRIES/EXITS. CONFIRM SIZE, COLOUR & REQUIREMENTS AS PER SPECIFIC LOCAL CODES AND BYLAWS.
- RESERVED.
- G.C TO PROVIDE & INSTALL STAINLESS STEEL KICK PLATE (AT BOTTOM PANELS) ON BOTH SIDES FOR MAIN ENTRANCE DOORS, VESTIBULE DOORS & EXIT DOORS. REFER TO EXTERIOR FINISH SCHEDULE. - BY LANDLORD
- COLUMN DOOR OPERATOR FOR BARRIER FREE DOORS (INSTALLED AT MIN. 150mm A.F.F. AND MAX 1100mm A.F.F.) REFER TO ELECTRICAL DRAWINGS AND DOOR HARDWARE SCHEDULE ON SHEET A11. REFER TO DETAIL 31A5 AND SHEETS A2.
- VERIFY WITH LOCAL CODE FOR PUSH BUTTON REQUIREMENTS. SUPPLIED AND INSTALLED BY LANDLORD - BY LANDLORD
- EXISTING RUNNING BOND ACCENT BRICK - MODULAR SIZE. REFER TO EXTERIOR FINISH SCHEDULE. - BY LANDLORD
- EXISTING WALL PACK. REFER TO ELECTRICAL DRAWINGS. - BY LANDLORD
- G.C TO PROVIDE CONCRETE CURB ALONG DRIVE-THRU LANE. CURB TO PROJECT 200mm FROM FACE OF EXTERIOR CLADDING AND LENGTH OF CURB IS EXTENT OF FEATURE WALL. - BY LANDLORD
- EXTERIOR POP FRAMES (SUPPLIED AND INSTALLED BY OTHERS). GC TO ENSURE TO PROVIDE ADEQUATE WOOD BLOCKING IN WALL. - BY LANDLORD
- EXISTING TPO ROOF MEMBRANE ON BACK OF PARAPET WALLS. REFER TO SPECIFICATIONS. - BY LANDLORD
- RESERVED.
- RESERVED.
- EXISTING INSULATED METAL PANEL (COLOR BLACK ANODIZED). REFER TO WINDOW SCHEDULE ON SHEET A11. - BY LANDLORD
- G.C TO PROVIDE CONTROL JOINT (AS PER MANUFACTURER SPECIFICATIONS) COMPLETE WITH BACKING ROD & SEALANT (SEALANT COLOUR TO MATCH COLOUR OF MORTAR). - BY LANDLORD
- G.C TO INSTALL NEW C-CHANNEL CW INTEGRATED PERIMETER LIGHTING ABOVE SOLDIER COURSE. LANDLORD TO PROVIDE POWER AND JUNCTION BOX FOR ELECTRICAL WIRING. REFER TO EXTERIOR FINISH SCHEDULE. LANDLORD TO COORDINATE DETAILS WITH MANUFACTURER & PROVIDE SUPPORT SYSTEM AS REQUIRED.
- 1728mm x 1728mm 'RED LEAF' ILLUMINATED SIGNAGE OVER DRIVE THRU WINDOW, SUPPLIED BY TDL & INSTALLED BY SIGN COMPANY. LANDLORD TO ENSURE TO PROVIDE ADEQUATE WOOD BLOCKING/BACKING FOR SIGNAGE SUPPORT (COORDINATE WITH SIGN MANUFACTURER). G.C TO COORDINATE WITH SIGN MANUFACTURER AND SIGN INSTALLER FOR LOCATION OF FASTENERS. REFER TO ELECTRICAL DRAWINGS.
- APPROXIMATE LOCATION OF PROVINCE STAMP BY SIGN COMPANY.
- EXTERIOR LED SIGN LIGHT. REFER TO ELECTRICAL DRAWINGS. - BY LANDLORD
- DASHED LINE INDICATES ROOF LINE.
- WALL SCENCE. REFER TO ELECTRICAL DRAWINGS. - BY LANDLORD



SYMBOL LEGEND	
	DETAIL NUMBER DRAWING NUMBER
	SECTION NUMBER DRAWING NUMBER
	KEY NOTE
	EXISTING REMOVED.
	HATCH DENOTES AREA NOT IN SCOPE OF WORK UNLESS NOTED.
	HATCH DENOTES AREAS THAT ARE EXISTING. CLEAN AND PREPARE FOR NEW PAINT IF NOTED.

### GENERAL NOTES

- REFER TO EXTERIOR FINISH SCHEDULE FOR CAULKING COLOUR.
- THE CONTRACTOR SHALL BECOME FAMILIAR WITH AND FOLLOW ALL DRAWINGS AND SPECIFICATIONS.

### MASONRY/MORTAR SPEC.

- THE MORTAR COLOURING BY ROCKWOOD PIGMENTS, SEE FINISH SCHEDULE AS
- THE SPECIFICATIONS OF THE COLOURING MANUFACTURER ARE TO BE FOLLOWED.
- ALL BRICK JOINTS ARE TO BE RAKED 6mm DEEP.
- ALL BRICK MORTAR IS TO BE COLOURED AS SPECIFIED.
- ANY BRICK MASONRY WHICH DOES NOT MATCH THE APPROVED SPECIFICATION WILL BE REPLACED AT THE CONTRACTOR'S EXPENSE.
- THE CONTRACTOR SHALL BECOME FAMILIAR WITH AND FOLLOW ALL DRAWINGS AND SPECIFICATIONS.

### GENERAL NOTES

G.C TO COORDINATE HEIGHT OF THE ROOF WITH LANDLORD. ENSURE ALL THE SUB-TRADES ARE MADE AWARE OF THE FINAL COORDINATED HEIGHT.



nicholascaragianisarchitect inc.  
137 Pamilla Street, Ottawa ON K1S 3K9  
t. 613 937 6801 f. 613 937 8899 ncarchitect.ca

PROJCT / PROJECT  
*Tim Hortons*

STORE TYPE  
LOCATION  
2300 BANK STREET,  
OTTAWA  
ONTARIO

DRAWING TITLE  
EXTERIOR ELEVATIONS

DRAWN BY	CHECKED
SH	CC
SCALE	DATE
1:50	SEPT 2025
PROJECT NO.	DRAWING NO.
122191	A5.1