

Phoenix Homes

Design Brief

1773 & 1767 Baseline

April 2026

Design Brief

1773 & 1767 Baseline

April 2026

Prepared By:

Arcadis Canada Inc.
333 Preston Street, Suite 500
Ottawa, Ontario K1S5N4
Canada
Phone: 613 721 0555

Prepared For:

Michael Boucher
VP - Land Development
DCR Phoenix
18A Bentley Ave.
Ottawa, Ontario K2E 6T8, CA

Our Ref:

30297182.05



Sam Labadie, P.Eng.,
Land Development Engineer, Arcadis Canada Inc.



This document is intended only for the use of the individual or entity for which it was prepared and may contain information that is privileged, confidential and exempt from disclosure under applicable law. Any dissemination, distribution or copying of this document is strictly prohibited.

Table of Contents

1	INTRODUCTION	1
1.1	Geotechnical Concerns	1
1.2	Easements	2
2	WATER DISTRIBUTION	3
2.1	Existing Conditions	3
2.2	Design Criteria	3
2.2.1	Water Demands	3
2.2.2	System Pressures	3
2.2.3	Fire Flow Rate	4
2.2.4	Boundary Conditions	4
2.3	Proposed Water Plan	5
3	WASTEWATER	6
3.1	Existing Conditions	6
3.2	Design Criteria	6
3.3	Recommended Wastewater Plan	6
4	SITE STORMWATER MANAGEMENT	7
4.1	Existing Conditions	7
4.2	Design Criteria	7
4.3	Stormwater Management	7
4.3.1	Stormwater Quantity Control	7
5	SEDIMENT AND EROSION CONTROL PLAN	10
5.1	General	10
5.2	Trench Dewatering	10
5.3	Bulkhead Barriers	10
5.4	Seepage Barriers	10
5.5	Surface Structure Filters	10
6	CONCLUSIONS & RECOMMENDATIONS	11
6.1	Conclusions	11
6.2	Recommendations	11

List of Appendices

APPENDIX A

Site Plan
Topographic Plan of Survey prepared by Annis O'Sullivan Vollebakk Ltd
30297182-001 General Plan of Services

APPENDIX B

Water Demand Calculations
FUS Calculations
Boundary Conditions

APPENDIX C

Sanitary Sewer Design Sheet

APPENDIX D

Storm Sewer Design Sheet
30297182-500 Storm Drainage Area Plan
Modified Rational Method SWM Calculations
Runoff Coefficient Calculations
Watt's Adjustable Flow Control Roof Drain Spec
IPEX Spec Sheet

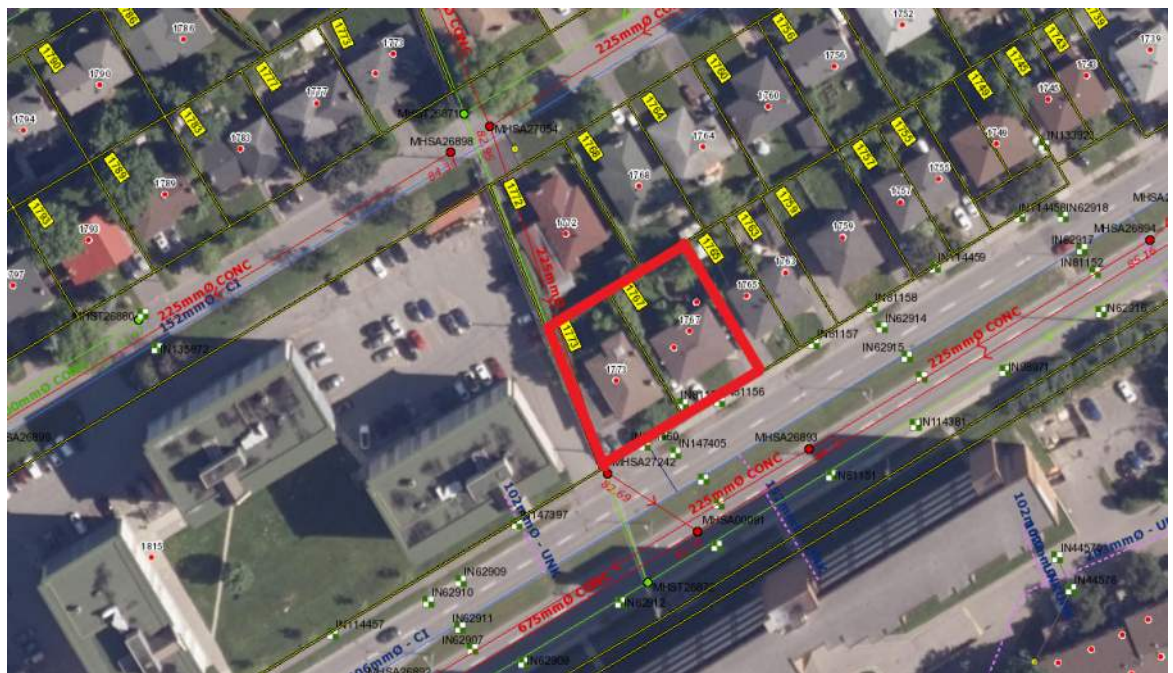
APPENDIX E

30297182-900 Erosion and Sediment Control Plan
30297182-EXCON Existing Conditions
30297182-REM Removals
30297182-200 Grading Plan

1 INTRODUCTION

1773 & 1767 Baseline Road is located on the north side of Baseline Road, between the intersection with Navaho Drive to the west and Ferguson Street to the east, in Ottawa, Ontario. This proposed site is abutted by an apartment complex to the west, residential to the east and north, and Baseline Road to the south. Arcadis Professional Services (Canada) Inc. (formerly IBI Group) has been retained by Phoenix Homes to provide professional engineering services for 1773 & 1767 Baseline Road. The subject site is approximately 0.11 ha and consists of one 5-storey apartment building to be completed in one phase. Refer to key plan on **Figure 1.1** for Site location.

Figure 1.1 Site Location



1.1 Geotechnical Concerns

A separate geotechnical report will be completed for the site by others.

The objective of the investigation report will include:

- Determination of the subsoil and groundwater conditions;
- Provision of geotechnical recommendations pertaining to the design and development of the subject site including construction considerations.

Among other items, the report will comment on the following:

- Site grading;
- Foundation design;
- Pavement structure;
- Infrastructure construction;
- Groundwater control;

The report will conclude if the subject site is considered suitable for the proposed development.

1.2 Easements

There is an existing storm and sanitary sewer running through the west portion of the site. These sewers are in a 6.1m subject agreement easement NST. CR375146E. Sewers and other underground infrastructure will not be proposed inside the easement.

Easement lines are shown on drawing C-001 General Plan of Services as well as on the Topographic Plan of Survey prepared by AOV, both included in **Appendix A**.

2 WATER DISTRIBUTION

2.1 Existing Conditions

1773 & 1767 Baseline Road will be serviced with potable water from the City of Ottawa's existing water mains. There is an existing 400 mm diameter watermain inside Baseline Road adjacent to the site. This watermain falls within the City of Ottawa's pressure district Pressure Zone 2W which will provide the water supply to the site.

2.2 Design Criteria

2.2.1 Water Demands

The proposed development plan includes x residential units. The population for apartment buildings is assumed at 1.4 persons per unit for 1-bedroom units, and 2.1 persons per unit for 2-bedroom units as found in Table 4.1 of the Design Guidelines. Per unit population density and consumption rates are taken from Tables 4.1 and 4.2 at the Ottawa Design Guidelines – Water Distribution and are summarized as follows:

- Residential Average Day Demand 280 l/cap/day
- Residential Peak Daily Demand 700 l/cap/day
- Residential Peak Hour Demand 1540 l/cap/day

A water demand calculation sheet is included in **Appendix B** and the total water demands are summarized as follows:

- Average Day 0.23 l/s
- Maximum Day 0.57 l/s
- Peak Hour 1.25 l/s

2.2.2 System Pressures

The 2010 City of Ottawa Water Distribution Guidelines states that the preferred practice for the design of a new distribution system is to have normal operating pressures range between 345 kPa (50 psi) and 552 kPa (80 psi) under maximum daily flow conditions. Other pressure criteria identified in the guidelines are as follows:

Minimum Pressure Minimum system pressure under peak hour demand conditions shall not be less than 276 kPa (40 psi).

Fire Flow During the period of maximum day demand, the system pressure shall not be less than 150 kPa (21 psi) during a fire flow event.

Maximum Pressure Maximum pressure at any point in the distribution system in unoccupied areas shall not exceed 689 kPa (100 psi). In accordance with the Ontario Building/Plumbing Code the maximum pressure should not exceed 552 kPa (80 psi) in occupied areas. Pressure reduction controls may be required for buildings when it is not possible/feasible to maintain the system pressure below 552 kPa.

2.2.3 Fire Flow Rate

The Ontario Building Code (OBC) was used to determine the fireflow for the site per City of Ottawa technical bulletin 2024-05. The calculations result in a fire flow of 6,300 L/min (105.0 L/s) based on noncombustible building construction. A copy of the OBC calculation is included in **Appendix B**.

2.2.4 Boundary Conditions

The City of Ottawa has provided hydraulic boundary conditions for the connection to Baseline Road. The boundary conditions are based on the water demand and fire flow rates provided. A copy of the boundary conditions received October 21, 2025 is included in **Appendix B** and is summarized as follows:

SCENARIO	HYDRAULIC HEAD (M)
Maximum HGL	132.4
Peak Hour	126.2
Max Day + Fire Flow (66.7 l/s)	125.7

2.3 Proposed Water Plan

The site will be serviced by one 150mm diameter watermain from Baseline Road. There are two existing small-diameter water services for the existing buildings onsite that will need to be abandoned. There is sufficient hydrant coverage for the site, including one directly in front of the building, therefore no new hydrants are proposed.

Per Section 2.2.4, the building will need a fire flow of up to 6,300 L/min. With at least one hydrant within 75m of the building and two additional within 300m, the capacity needed to deliver the required fire flow to the structures are being provided in accordance with Technical Bulletin ISTB-2018-02 dated March 21, 2018. Furthermore, the fire dept. connection for each building is also located within 45m of a hydrant.

HYDRANT AVAILABILITY				
BUILDING ID	FIRE FLOW DEMAND (L/MIN)	FIRE HYDRANT(S) WITHIN 75M (5,700 L/MIN)	FIRE HYDRANT(S) WITHIN 300M (2,800 L/MIN)	AVAILABLE FLOW (L/MIN)
Apartment	6,300	1	2	11,300

For the purposes of this report, assuming a minimal loss within the service connection the pressures within the site can be estimated as follows:

Minimum Pressure (Peak Hour) – The minimum peak hour pressure on the site can be estimated as HGL 126.2m – meter elevation of 88.5m = 37.7m or 369.8 kPa which exceeds the minimum requirement of 276 kPa. The pressure on the top floor can be estimated as 126.2m – 104.62m = 21.58m or 211.7 KPa which is below the minimum of 276 kPa and will require a water pump.

Fire Flow – The max day plus fire flow can be estimated as HGL 125.7 – ground floor elevation plus 0.4m 88.5 = 37.2m or 364.9 KPa which exceeds the minimum of 150kPa.

Max HGL (High Pressure Check) – The high-pressure check can be estimated as HGL 132.4 – (lowest level) 88.1 = 44.3m or 434.6 KPa which is below the maximum of 552 kPa, therefore a pressure reducing valve is not required.

The above results indicate the municipal infrastructure can support the proposed development.

3 WASTEWATER

3.1 Existing Conditions

There is an existing 225mm concrete sanitary sewer in an easement on the west side of the subject site, as well as an existing 225mm and 675mm concrete sanitary in Baseline Road. There is currently 0.12 L/s of residential wastewater flow offsite from the two existing residential houses.

3.2 Design Criteria

The sanitary sewers for the subject site will be based on the City of Ottawa design criteria. It should be noted that the sanitary sewer design for this study incorporates the latest City of Ottawa design parameters identified in Technical Bulletin ISTB-2018-01. Some of the key criteria will include the following:

- Commercial/Institutional flow 28,000 l/ha/d
- Residential flow 280 l/c/d
- Peaking factor 1.5 if ICI in contributing area >20%
1.0 if ICI in contributing area <20%
- Infiltration allowance 0.33 l/s/ha
- Velocities 0.60 m/s min. to 3.0 m/s max.

3.3 Recommended Wastewater Plan

Wastewater flows have been calculated for the subject site, see detailed Sanitary Sewer Design Sheet in **Appendix C**.

As discussed in Section 3.1, there is an existing 225mm sanitary sewer located through an easement on the subject site. As shown in the sanitary sewer design sheet (included in **Appendix C**), the residential wastewater effluent will increase from 0.12 L/s to 0.86L/s. The City of Ottawa is asked to comment on if the existing 225mm sanitary sewer has sufficient capacity for the proposed redevelopment.

4 SITE STORMWATER MANAGEMENT

4.1 Existing Conditions

There is an existing 750mm concrete storm sewer in an easement on the west side of the subject site, as well as an existing 1500mm concrete sanitary in Baseline Road. There are currently two catchbasins onsite, one in the driveway of 1767 Baseline Road and the other on the front lawn.

The front of the site currently drains towards a series of catchbasins in drive aisles and front lawns, as well as Heron Road ROW. The rear of the site flows to an informal swale near the back property line and offsite to the western private property. Stormwater from private properties to the north and east also enter this swale. Currently, no known flow control measures have been implemented.

4.2 Design Criteria

The stormwater management infrastructure was designed per the City of Ottawa 2012 Sewer Design Guidelines. Previous consultation with the City has also confirmed water quantity and quality requirements for this site, as summarized below,

- Design Storm 1:5-year return (Ottawa)
- Rational Method Sewer Sizing
- Initial Time of Concentration 10 minutes
- Runoff Coefficients
 - Softscape Areas C = 0.20
 - Hardscape Areas C = 0.90
- Pipe Velocities 0.80 m/s to 3.0 m/s
- Minimum Pipe Size 250 mm diameter (200 mm CB Leads)

4.3 Stormwater Management

The subject site is identified on the City of Ottawa's official Plan (OP) Schedule C15, classified as lands within the urban boundary and is subject to development. This site is designed to have minimal impact on adjacent properties grading, drainage, access, circulation, and privacy. This will be achieved by means of Water Quantity Controls.

4.3.1 Stormwater Quantity Control

Stormwater effluent from the subject site is proposed to be limited to a 5-year design storm with a runoff coefficient of 0.5 and a time of concentration of 10 minutes for all storm events up to and including the 100-year event.

The release rate can be therefore calculated as follows,

$$\begin{aligned} Q_{\text{restricted}} &= 2.78 \times C \times i_{5\text{yr}} \times A \quad \text{where:} \\ C &= \text{Runoff coefficient} = 0.50 \\ i_{5\text{yr}} &= \text{Intensity of 5-year storm event (mm/hr)} \\ &= 998.071 \times (T_c + 6.053)^{0.814} = 104.19 \text{ mm/hr; where } T_c = 10 \text{ minutes} \\ A &= 0.11 \text{ Ha} \end{aligned}$$

$$\begin{aligned}
 Q_{\text{restricted}} &= 2.78 \times C \times i_{5\text{yr}} \times A \\
 &= 2.78 \times 0.50 \times 104.19 \times 0.11 \\
 &= 15.93 \text{ L/s}
 \end{aligned}$$

It is therefore proposed to restrict the 100-year stormwater outflow from the subject site to 15.93 L/s. This will be achieved through a combination of inlet control devices (ICD's), surface storage where possible, and roof storage.

Surface flows in excess of the site's allowable release rate will be stored on site and gradually released into the minor system to respect the site's allowable release rate. The average rooftop retention depth located within the building area will be limited to 75mm during a 1:100-year event as shown on the ponding plan located in **Appendix D** and grading plans located in **Appendix E**.

Some stormwater from adjacent lands currently flow through the subject site as part of an overland flow route. The overland flow route has been maintained as part of the proposed grading. Any water over and above the 100-year storm event storage volume will continue to flow overland along the existing flow route, while quantities below the 100-year level of storage provided will be captured and released into the municipal storm sewer at a restricted rate.

Along the perimeter of the site, the opportunity to capture and store runoff is limited due to grading constraints and building geometry. These areas will discharge uncontrolled to Heron Road and existing catchbasins. These areas are located at the perimeter of the site where it is necessary to tie into public boulevards and adjacent properties or in areas where ponding stormwater is undesirable.

Based on the proposed site plan, the total uncontrolled area has been calculated to be 0.0153 Ha. For the detailed storm drainage area plan for the site, refer to Drawing 500 in **Appendix D**.

Based on a 1:100-year event, the flow from the 0.0153 Ha uncontrolled area to the west can be determined as:

$$\begin{aligned}
 Q_{\text{uncontrolled}} &= 2.78 \times C \times i_{100\text{yr}} \times A \quad \text{where:} \\
 C &= \text{Average runoff coefficient} = 0.42 \times 1.25 = 0.525 \text{ (100 year C-value)} \\
 i_{100\text{yr}} &= \text{Intensity of 100-year storm event (mm/hr)} \\
 &= 1735.688 \times (T_c + 6.014)^{0.820} = 178.56 \text{ mm/hr; where } T_c = 10 \text{ minutes} \\
 A &= \text{Uncontrolled Area} = 0.0153 \text{ Ha}
 \end{aligned}$$

Therefore, the uncontrolled release rate can be determined as:

$$\begin{aligned}
 Q_{\text{uncontrolled1}} &= 2.78 \times C \times i_{100\text{yr}} \times A \\
 &= 2.78 \times 0.525 \times 178.56 \times 0.0153 \\
 &= 3.99 \text{ L/s}
 \end{aligned}$$

Similarly, a ramp to the underground parking garage is also present onsite and will be unrestricted:

$$\begin{aligned}
 Q_{\text{uncontrolled2}} &= 2.78 \times C \times i_{100\text{yr}} \times A \\
 &= 2.78 \times 1.00 \times 178.56 \times 0.0078 \\
 &= 3.87 \text{ L/s}
 \end{aligned}$$

The Maximum allowable release rate from the site can be determined by subtracting the Uncontrolled release rate from the minor system restricted flow rate.

$$\begin{aligned}
 Q_{\text{max}} &= Q_{\text{restricted}} - Q_{\text{uncontrolled1}} - Q_{\text{uncontrolled2}} \\
 Q_{\text{max}} &= 15.93 \text{ L/s} - 3.99 \text{ L/s} - 3.87 \text{ L/s} \\
 Q_{\text{max}} &= 8.07 \text{ L/s}
 \end{aligned}$$

Therefore, the total restricted flow rate through the minor system will be the design flow rate of **8.07 L/s**. This will be achieved using Inlet Control Devices and surface ponding. A summary of the ICD's, their corresponding storage requirements, storage availability, and associated drainage areas has been provided below.

DRAINAGE AREA	ICD RESTRICTED FLOW (L/s)	100 YEAR STORAGE REQUIRED (m ³)	2 YEAR STORAGE REQUIRED (m ³)	STORAGE PROVIDED (m ³)
ROOF	2.00	20.77	5.48	28.13
CB1	6.00	2.70	0.06	4.69
TOTAL	8.00	23.47	5.54	32.82

Detailed stormwater management calculations for the 2-year event, 100-year event, and stress test (100-year plus 20%) event can be found in **Appendix D**.

There will be no 2-year surface ponding per the modified rational method calculations.

A 0.3m freeboard from downstream high points/maximum ponding elevations to first floor building opening is maintained in all scenarios including emergency overflow conditions.

Refer to the geotechnical report for information regarding foundation drainage. Foundation drainage systems are to be independent and connected to the storm service downstream of any stormwater management control device.

A backwater valve is required on the building storm outlet due to high HGL in downstream storm sewer. The rear catchbasin system will overflow along the existing overland flow route in case of high HGL conditions during a major storm event.

Detailed roof design to be completed by others at a later date. Roof design is to adhere to the requirements of this report (notably, the stormwater capacity and release rate) as well as any requirements in the Ontario Building Code (scupper details, emergency overflow, etc). Roof drain flow controls to be Watts Adjustable Accutrol Weir or equivalent (specification sheet found in **Appendix D**). A ground-level emergency overflow outlet is required in front of the building outletting to Heron Road ROW in case storm sewer is at capacity during a major storm event.

5 SEDIMENT AND EROSION CONTROL PLAN

5.1 General

During construction, existing stream and conveyance systems can be exposed to significant sediment loadings. Although construction is only a temporary situation, it is proposed to introduce a number of mitigative construction techniques to reduce unnecessary construction sediment loadings. These will include:

- groundwater in trench will be pumped into a filter mechanism prior to release to the environment;
- bulkhead barriers will be installed at the nearest downstream manhole in each sewer which connects to an existing downstream sewer;
- seepage barriers will be constructed in any temporary drainage ditches; and
- silt sacks will remain on open surface structure such as manholes and catchbasins until these structures are commissioned and put into use.
- Prior to roads having a granular base, construction traffic exiting the site to be directed to a mud mat to reduce sediment tracked offsite

5.2 Trench Dewatering

During construction of municipal services, any trench dewatering using pumps will be discharged into a filter trap made up of geotextile filters and straw bales similar in design to the OPSD 219.240 Dewatering Trap. These will be constructed in a bowl shape with the fabric forming the bottom and the straw bales forming the sides. Any pumped groundwater will be filtered prior to release to the existing surface runoff. The contractor will inspect and maintain the filters as needed including sediment removal and disposal and material replacement as needed.

5.3 Bulkhead Barriers

At the first manhole constructed immediately upstream of an existing sewer, a ½ diameter bulkhead will be constructed over the lower half of the outletting sewer. This bulkhead will trap any sediment carrying flows, thus preventing any construction –related contamination of existing sewers. The bulkheads will be inspected and maintained including periodic sediment removal as needed.

5.4 Seepage Barriers

These barriers will consist of both the Light Duty Straw Bale Barrier as per OPSD 219.100 or the Light Duty Silt Fence Barrier as per OPSD 219.110 and will be installed in accordance with the sediment and erosion control drawing. The barriers are typically made of layers of straw bales or geotextile fabric staked in place. All seepage barriers will be inspected and maintained as needed.

5.5 Surface Structure Filters

All catchbasins, and to a lesser degree manholes, convey surface water to sewers. However, until the surrounding surface has been completed these structures will be covered to prevent sediment from entering the minor storm sewer system. Until rear yards are sodded or until streets are asphalted and curbed, all catchbasins and manholes will be equipped with geotextile filter socks. These will stay in place and be maintained during construction and build until it is appropriate to remove them.

6 CONCLUSIONS & RECOMMENDATIONS

6.1 Conclusions

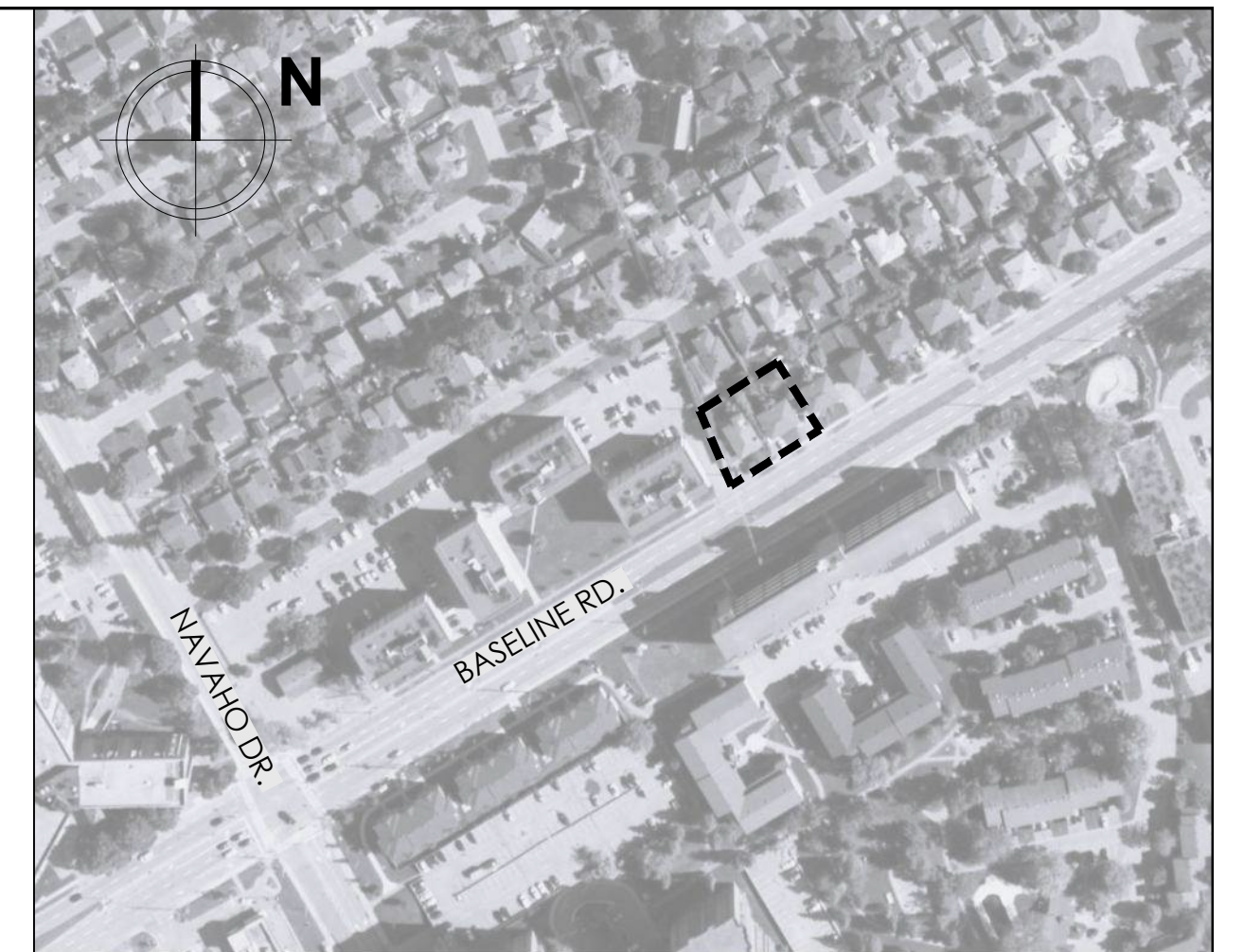
This report and the accompanying working drawings clearly indicate that the proposed development meets the requirements of the stakeholder regulators, including the City of Ottawa..

There is a reliable water supply available adjacent to the proposed development; a wastewater outlet is available adjacent to the site; local storm sewers have been installed adjacent to the site.

6.2 Recommendations

It is recommended that the regulators review this submission with an aim of providing the requisite approvals to permit the owners to proceed to the construction stage of the subject site.

Appendix A



AREA PLAN: SCALE: NTS

SITE INFORMATION:
 SITE AREA = 0.11ha (0.27 Acres.)
 ZONING: 1773 WOODROFFE = R2A, 1767 WOODROFFE = R2F[S55]
 NEW ZONING (2026-50): MS2 H(11)
 PROPOSED ZONING: R5B [XXXX] H(18)
 OFFICIAL PLAN: OUTER URBAN TRANSECT
 CORRIDOR-MAINSTREET
 EVOLVING NEIGHBORHOOD

	REQUIRED :	PROVIDED :
LOT WIDTH (MIN.):	38.29 m	38.29 m
LOT AREA (MIN.):	1,086.92 m ²	1,086.92 m ²
BUILDING HEIGHT (MAX.):	17.50 m	17.50 m
FRONT YARD (MIN.):	2.50 m	2.50 m
REAR YARD (MIN.):	6.06 m	6.06 m
INTERIOR SIDE YARD (MIN.):	2.50 m	2.50 m
LANDSCAPED AREA OF LOT (MIN.):	472.21 m ² (43.33%)	472.21 m ² (43.33%)

PARKING REQUIREMENTS: SCHEDULE A3 AREA 'B', NEW ZONING BYLAW 2026-50
 MID-RISE APARTMENT BUILDING (40 UNITS)
 MAXIMUM RESIDENT PARKING PERMITTED = 1.25 / D.U. (40) = 50 SPACES
 VISITOR PARKING REQUIRED = 0.1 / D.U. (40-24=16) = 02 SPACES
TOTAL PARKING REQUIRED = 02 SPACES
TOTAL PARKING PROVIDED = 14 SPACES (2 VISITOR, 12 RESIDENT)

BICYCLE PARKING REQUIREMENTS: NEW ZONING BYLAW 2026-50
 SHORT-TERM BICYCLE SPACES REQUIRED = 2 + 2 = 04 SPACES
 LONG-TERM BICYCLE SPACES REQUIRED = 1.0 / D.U. (40) = 40 SPACES
 NUMBER OF SPACES REQUIRED TO BE INCLUSIVE: (5%/ 40) = 2 SPACES
TOTAL BICYCLE PARKING REQUIRED = 44 SPACES
TOTAL BICYCLE PARKING PROVIDED = 44 SPACES

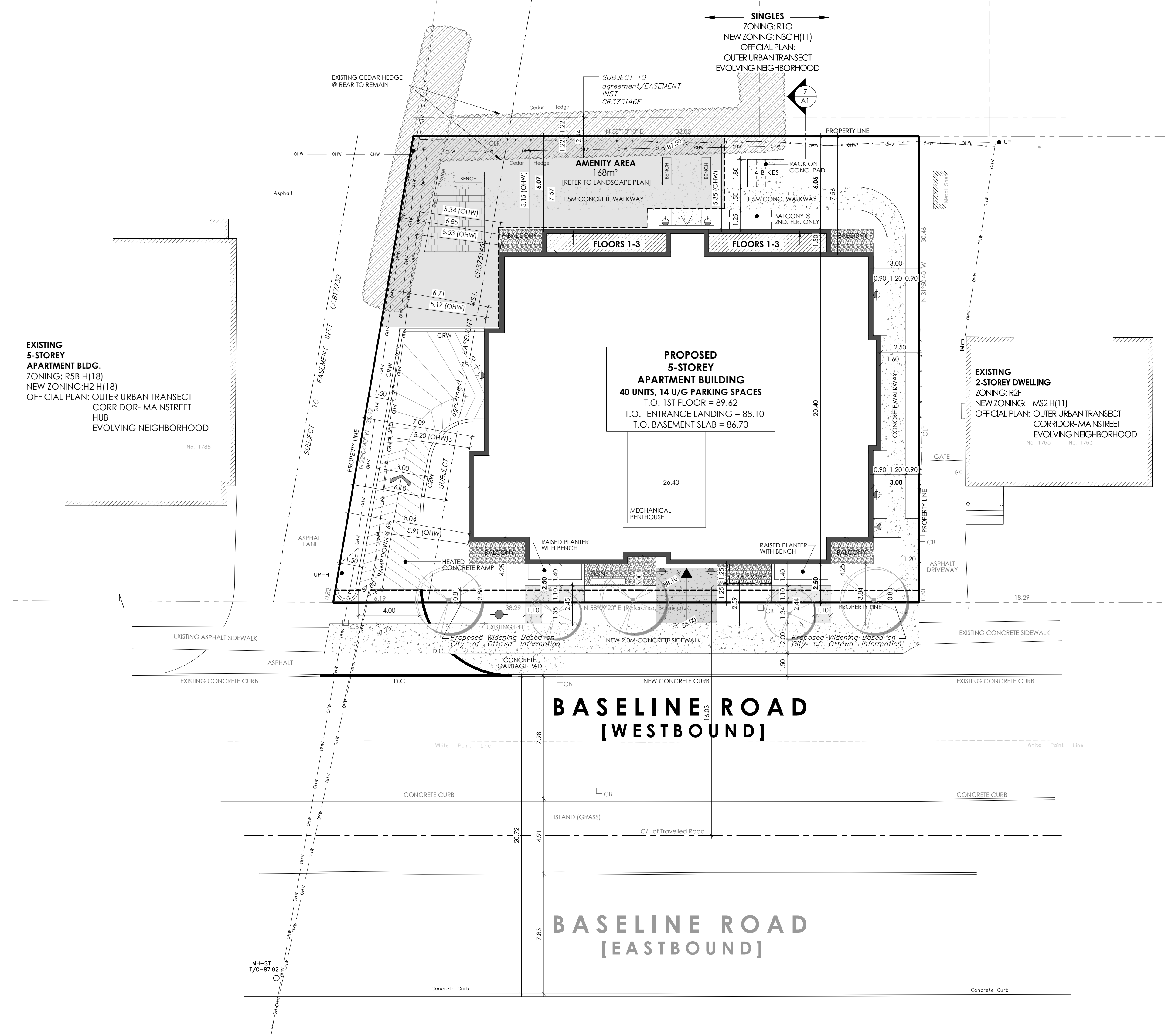
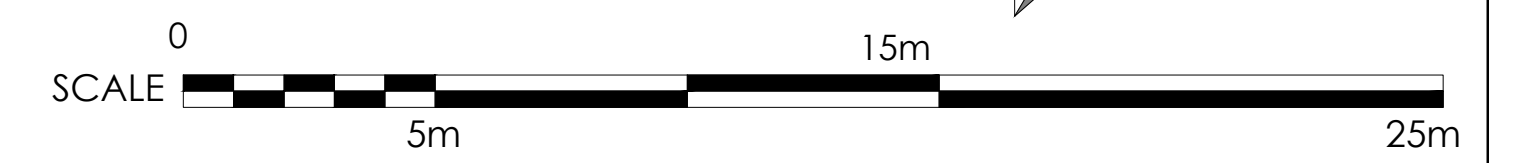
AMENITY SPACE REQUIREMENTS:
 AMENITY SPACE REQUIRED = 6m² d.u. x 40 d.u. = 240m²
 50% COMMUNAL AMENITY AREA REQUIRED = 120m²
 COMMUNAL AMENITY AREA PROVIDED = 168m²
 PRIVATE AMENITY AREA PROVIDED = 116m² (BALCONIES/TERRACES)
TOTAL AMENITY AREA PROVIDED = 284m²

BUILDING INFORMATION:
 5-STOREY APARTMENT BUILDING
 BUILDING AREA: 541.81 m²
 GFA: 2,324.99 m²
 UNIT COUNTS: STUDIO: 00
 1-BEDROOM: 24
 2-BEDROOM: 16
 3-BEDROOM: 00

LEGEND/ ABBREVIATIONS:

D.C.	DEPRESSED CURB	⊙	GAS METERS LOCATION	⊙	LIGHT STANDARD
CRW	CONCRETE RETAINING WALL	⊠	BUILDING SERVICES LOCATION (IN LOWER LEVEL)	⊠	TWSS
W.I.	WROUGHT IRON	⊠	WALL MOUNTED LIGHT FIXTURE	⊠	SIAMSE CONNECTIONS
TWB	TACTILE WALKING SURFACE INDICATOR	⊠	FIRE HYDRANT	⊠	TRANSFORMER
CONC.	CONCRETE	⊠	GRADE ELEVATION FOR ARCHITECTURAL INTENT & COORDINATION ONLY. REFER TO GRADING PLAN FOR FINAL GRADES.	⊠	PRINCIPAL ENTRANCE
ASPH.	ASPHALT	⊠	GRADE ELEVATION FOR ARCHITECTURAL INTENT & COORDINATION ONLY. REFER TO GRADING PLAN FOR FINAL GRADES.	⊠	SECONDARY ENTRANCE
CLF	CHAIN LINK FENCE				
OWH	OVERHEAD WIRES				

NOTE:
 SITE PLAN TO BE READ IN CONJUNCTION WITH:
 - SITE SERVICING AND GRADING PLANS PREPARED BY ARCADIS PROFESSIONAL SERVICES (CANADA) INC.
 - LANDSCAPE PLAN PREPARED BY JAMES B. LENNOX & ASSOCIATES INC.
NOTE:
 SITE BOUNDARIES DERIVED FROM:
 TOPOGRAPHIC PLAN OF SURVEY OF LOTS 351 AND 352 REGISTERED PLAN 372115 CITY OF OTTAWA
 Surveyed by Annis, O'Sullivan, Vollebek Ltd.
 DATED: 2025/03/28



EXISTING 5-STOREY APARTMENT BLDG.
 ZONING: R5B H(18)
 NEW ZONING: H2 H(18)
 OFFICIAL PLAN: OUTER URBAN TRANSECT
 CORRIDOR-MAINSTREET
 HUB
 EVOLVING NEIGHBORHOOD

EXISTING 2-STOREY DWELLING
 ZONING: R2F
 NEW ZONING: MS2 H(11)
 OFFICIAL PLAN: OUTER URBAN TRANSECT
 CORRIDOR-MAINSTREET
 EVOLVING NEIGHBORHOOD

PROPOSED 5-STOREY APARTMENT BUILDING
 40 UNITS, 14 U/G PARKING SPACES
 T.O. 1ST FLOOR = 89.62
 T.O. ENTRANCE LANDING = 88.10
 T.O. BASEMENT SLAB = 86.70



GENERAL NOTES:
 1. THE CONTRACTOR IS RESPONSIBLE FOR CHECKING AND VERIFYING ALL DIMENSIONS. ANY DISCREPANCY MUST BE REPORTED TO M. DAVID BLAKELY ARCHITECT INC.
 2. ALL WORK AND MATERIALS TO BE IN COMPLIANCE WITH ALL CODES, REGULATIONS, & BY-LAWS.
 3. ADDITIONAL DRAWINGS MAY BE ISSUED FOR CLARIFICATION TO ASSIST THE PROPER EXECUTION OF WORK. SUCH DRAWINGS WILL HAVE THE SAME MEANING AND INTENT AS IF THEY WERE INCLUDED WITH THE PLANS IN CONTRACT DOCUMENTS.
 4. DO NOT SCALE DRAWINGS.
 5. THIS DRAWING SHALL NOT BE USED OR COPIED WITHOUT THE AUTHORIZATION OF THE ARCHITECT.
 6. THIS DRAWING SHALL NOT BE USED FOR PERMIT OR CONSTRUCTION UNLESS THE DRAWING BEARS THE ARCHITECT'S SEAL AND SIGNATURE.

OWNER: 760527 ONTARIO INC., 524 TRILBY COURT, OTTAWA, ON K2R 0A4
ARCHITECT: M. DAVID BLAKELY ARCHITECT INC., 2200 PRINCE OF WALES DR., SUITE 101, OTTAWA, ON K2E 4Z7 (613) 226-8811
CIVIL ENGINEER: ARCADIS PROFESSIONAL SERVICES (CANADA) INC., 333 PRESTON ST SUITE 500, OTTAWA, ON K1S 5N4 (613) 721-0555

LANDSCAPE ARCHITECT: JAMES B. LENNOX & ASSOCIATES INC., 3332 CARLING AVE, NEPEAN, ON K2E 7S6 (613) 722-5168
SURVEYOR: ANNIS O'SULLIVAN VOLLEBEK LTD., 14 CONCORSE GATE, SUITE 500, NEPEAN, ON K2E 7S6 (613) 727-8850

SEAL

No.	DATE	DESCRIPTION	INT.	No.	DATE	DESCRIPTION	INT.
1.	10/04/25	FOR COORDINATION	MB	13.			
2.	11/04/25	FOR REVIEW	MB	14.			
3.	08/01/26	FOR SITE PLAN SUBMISSION	MB	15.			
4.	09/02/26	AS PER CITY COMMENTS/ FOR RE-SUBMISSION	MB	16.			
5.	14/04/26	SIDE YARD WALKWAY WIDENED/ FOR COORDINATION	MB	17.			
6.	AS PER CITY COMMENTS ROUND #1/ FOR RESUBMISSION	MB	18.				

A	DETAIL NUMBER
B	SHEET NUMBER (DETAIL REQUIRED)
C	SHEET NUMBER (DETAIL LOCATION)

PROJECT: 1773 & 1767 BASELINE ROAD, OTTAWA, ONTARIO
OWNER: 760527 ONTARIO INC., 524 TRILBY COURT, OTTAWA, ON K2R 0A4

DRAWING TITLE: SITE PLAN
DATE: APRIL 2025
SCALE: 1 : 150
DRAWN BY: mdb
CHECKED: MDB
SHEET NO.: SP1

TOPOGRAPHIC PLAN OF SURVEY OF
LOTS 351 and 352
REGISTERED PLAN 372115
CITY OF OTTAWA
 Surveyed by Annis, O'Sullivan, Vollebek Ltd.

Scale 1 : 150
 0 4.5 9 13.5 18 22.5 27 31.5 36 Metres

Metric
 DISTANCES SHOWN ON THIS PLAN ARE IN METRES AND
 CAN BE CONVERTED TO FEET BY DIVIDING BY 0.3048

Surveyor's Certificate
 I CERTIFY THAT:
 1. This survey and plan are correct and in accordance with the Surveys
 Act and the Surveyors Act and the regulations made under them.
 2. The survey was completed on the 19th day of March, 2025.

2025/03/28 Date
 D.S. McMoran
 Ontario Land Surveyor

Notes & Legend

—□—	Denotes	Survey Monument Planted
—■—	Denotes	Survey Monument Found
SIB	Standard Iron Bar	
SSIB	Short Standard Iron Bar	
IB	Iron Bar	
CP	Concrete Pin	
(WIT)	Witness	
(AOG)	Annis, O'Sullivan, Vollebek Ltd.	
Meas.	Measured	
Prop.	Proportioned	
(P1)	Registered Plan 372115	
(P2)	(AOG) Plan, November 15, 1990	
(P3)	Plan 4R-22510	
(P4)	Plan 4R-8091	
○ MH-S	Maintenance Hole (Sanitary)	
○ VC	Valve Chamber (Watermain)	
—G—	Underground Gas	
—W—	Underground Water	
—OW—	Overhead Wires	
○ UP	Utility Pole	
□ CB	Catch Basin	
○ FH	Fire Hydrant	
○ WV	Water Valve	
○ GV	Gas Valve	
○ GM	Gas Meter	
○ HM	Hydro Meter	
○ B	Bollard	
CLF	Chain Link Fence	
BF	Board Fence	
RWS	Stone Retaining Wall	
∅	Diameter	
○	Location of Elevations	
○	Top of Concrete Curb Elevation	
○	Top of Stone Retaining Wall Elevation	
○	Centreline	
○	Deciduous Tree	
NTS	Not to Scale	

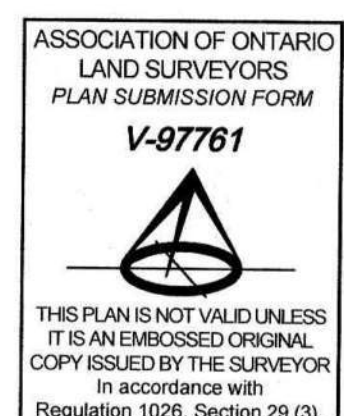
Bearings are grid, derived from Can-Net 2016 Real Time Network GPS observations, MTM Zone 9 (76°30' West Longitude) NAD-83 (original).
 For bearing comparisons, a rotation of 0°34'10" counter-clockwise was applied to bearings on P1 & P4, a rotation of 0°36'10" counter-clockwise was applied to bearings on P2 & P3.

Please note that the legal description for Lot 352 (PIN 03993-0172) is not subject to the easement purported in the Instrument CR375146E. The Land Registry Office and the legal community are of the opinion that the easements purported in Instrument CR375146E are not a valid easement. We recommended that legal counsel be obtained regarding the validity of the easement.

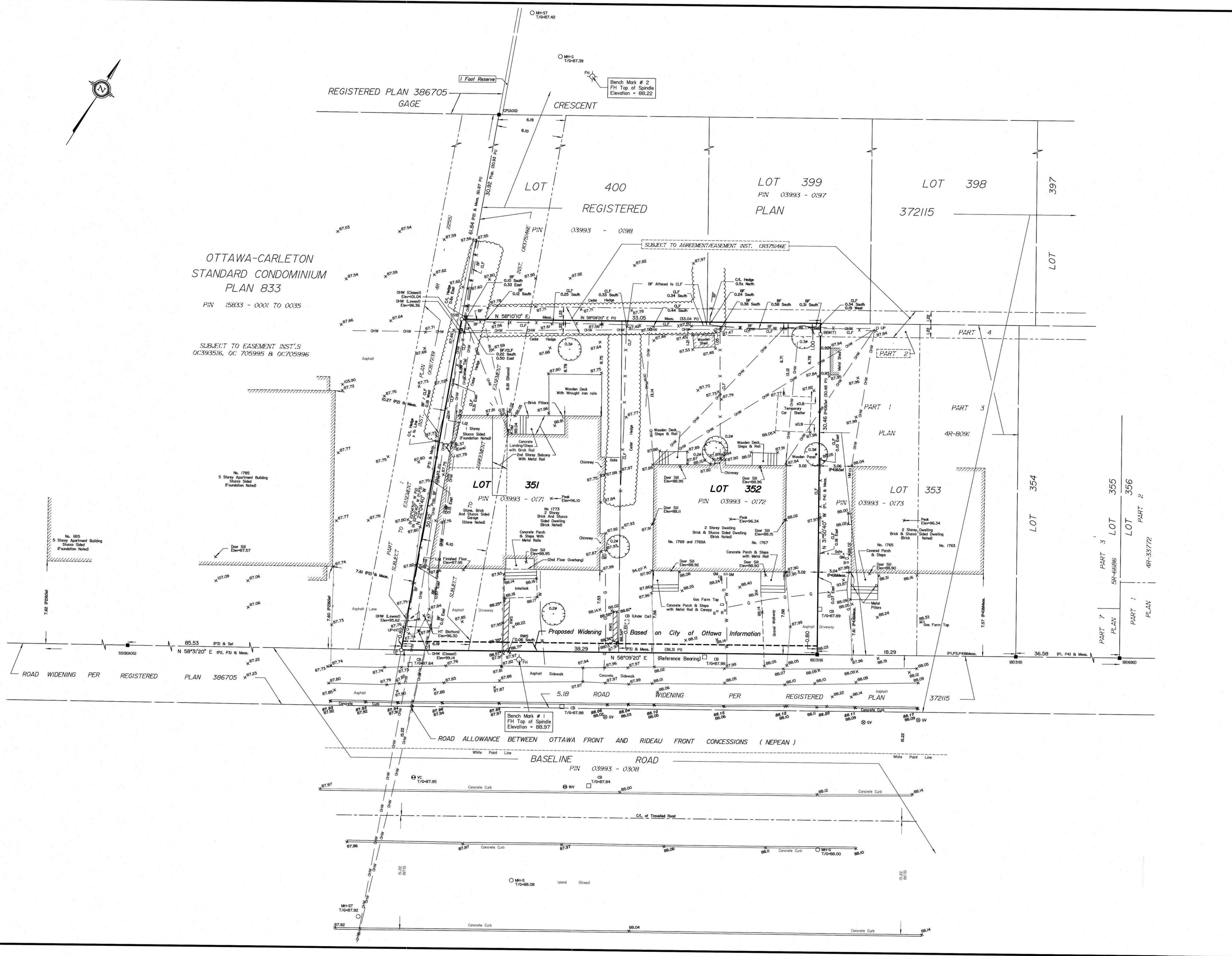
ELEVATION NOTES
 1. Elevations shown are geodetic, derived from City of Ottawa benchmark No. 3695, having an elevation of 86.752 metres, and are referred to the CGVD28 geodetic datum.
 2. It is the responsibility of the user of this information to verify that the job benchmark has not been altered or disturbed and that its relative elevation and description agrees with the information shown on this drawing.

UTILITY NOTES
 1. This drawing cannot be accepted as acknowledging all of the utilities and it will be the responsibility of the user to contact the respective utility authorities for confirmation.
 2. Only visible surface utilities were located.
 3. Underground utilities shown on this plan were marked on the ground by an unknown third party.
 4. A field location of underground plant by the pertinent utility authority is mandatory before any work involving breaking ground, probing, excavating etc.

Topographic data was collected under winter conditions. Snow cover and ice preclude determining location and elevation of some topographical data that is otherwise visible.



ANNIS, O'SULLIVAN, VOLLEBEK LTD.
 14 Concourse Gate, Suite 500
 Nepean, Ont. K2E 7S6
 Phone: (613) 727-0850 / Fax: (613) 727-1079
 Email: Nepean@aovl.com



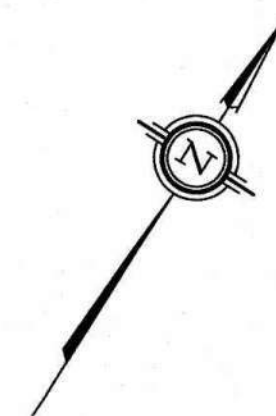
OTTAWA-CARLETON
 STANDARD CONDOMINIUM
 PLAN 833
 PIN 15833 - 0001 to 0035

SUBJECT TO EASEMENT INST.'S
 OC393516, OC 705995 & OC705996

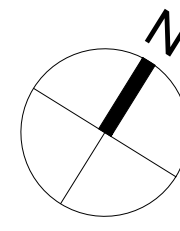
Proposed Widening Based on City of Ottawa Information

ROAD ALLOWANCE BETWEEN OTTAWA FRONT AND RIDEAU FRONT CONCESSIONS (NEPEAN)

BASELINE ROAD
 PIN 03993 - 0308



17/03/2025 09:25:00 AM - 25.000 Rev. 1.00 - Topographical Plan of Survey 372115 T.F.



OTTAWA-CARLETON
STANDARD CONDOMINIUM
PLAN 833

SERVICING LEGEND

- MH118A SANITARY MANHOLE
- 200mm \varnothing SAN SANITARY SEWER
- MH109 STORM MANHOLE
- 825mm \varnothing STM STORM SEWER - LESS THAN 8000
- 2000 WATERMAIN WATERMAIN
- CB01 BARRIER CURB
- CB02 REAR YARD CATCHBASIN IN ROAD CONNECTING STRUCTURE C/W SOLID GRATE
- CB04 REAR YARD "TEE" CATCHBASIN (3000) C/W TOP OF GRATE AND INVERT OUT
- CB04 REAR YARD "END" CATCHBASIN (3000) C/W TOP OF GRATE AND INVERT OUT
- PERFORATED REAR YARD SUBDRAIN
- VB VALVE AND VALVE BOX
- SIAMSESE CONNECTION (IF REQUIRED)
- METER (IF REQUIRED)
- RM REMOTE METER (IF REQUIRED)

NOTES :

1. ALL MATERIALS AND CONSTRUCTION IS TO BE IN ACCORDANCE WITH THE CURRENT CITY OF OTTAWA STANDARD DRAWINGS & SPECIFICATIONS OR OPS/OPSS IF CITY DRAWINGS AND SPECIFICATIONS DO NOT APPLY.
2. THE POSITION OF UNDERGROUND AND ABOVE GROUND SERVICE, UTILITIES AND STRUCTURES ARE NOT NECESSARILY SHOWN ON THE CONTRACT DRAWINGS, AND WHERE SHOWN, THE ACCURACY OF THE POSITION OF SUCH SERVICE, UTILITIES AND STRUCTURES IS NOT GUARANTEED. THE CONTRACTOR IS RESPONSIBLE FOR DETERMINING THE EXACT LOCATION, SIZE, MATERIAL AND ELEVATION OF ALL EXISTING SERVICES AND UTILITIES PRIOR TO CONSTRUCTION.
3. THE CONTRACTOR SHALL REPORT ALL CONFLICTS, DISCOVERIES OF ERROR AND DISCREPANCIES TO THE ENGINEER.
4. THE CONTRACTOR SHALL BE RESPONSIBLE TO PROTECT AND ASSUME RESPONSIBILITY FOR ALL UTILITIES WHETHER OR NOT SHOWN ON THESE DRAWINGS.
5. THE CONTRACTOR SHALL BE RESPONSIBLE TO PROTECT ALL LANDS BEYOND THE SITE LIMITS. ANY AREAS BEYOND THE SITE LIMITS, WHICH ARE DISTURBED DURING CONSTRUCTION, SHALL BE REPAIRED AND RESTORED TO ORIGINAL CONDITION OR BETTER, TO THE SATISFACTION OF THE ADJACENT LAND OWNER. THE OWNER, THE OWNERS REPRESENTATIVES AND/OR THE AUTHORITY HAVING JURISDICTION OVER THE AREA SHALL BE CEASED UNTIL FURTHER NOTICE.
6. WHERE NECESSARY, THE CONTRACTOR SHALL IMPLEMENT A TRAFFIC MANAGEMENT PLAN TO THE SATISFACTION OF THE CITY OF OTTAWA. ALL CONSTRUCTION SIGNAGE MUST CONFORM TO THE LATEST VERSION OF THE M.T.O. MANUAL OF UNIFORM TRAFFIC CONTROL DEVICES. ALL TEMPORARY TRAFFIC CONTROL MEASURES MUST BE REMOVED UPON THE COMPLETION OF THE WORKS.
7. SHOULD ANY BURIED ARCHAEOLOGICAL REMAINS BE FOUND ON THE PROPERTY DURING CONSTRUCTION ACTIVITIES, THE CONTRACTOR SHALL NOTIFY THE OWNER TO CONTACT THE HERITAGE OPERATIONS UNIT OF THE ONTARIO MINISTRY OF CULTURE. WORK MUST BE NOTIFIED IMMEDIATELY, AND WORK WITHIN THE AREA SHALL BE CEASED UNTIL FURTHER NOTICE.
8. FOR GEOTECHNICAL INFORMATION REFER TO GEOTECHNICAL REPORT PG7446-1 PREPARED BY PATERSON GROUP.
9. FOR GEODETIC BENCHMARK AND GEOMETRIC LAYOUT OF STREET AND LOTS, REFER TO TOPOGRAPHICAL SURVEY AND PLAN OF SUBDIVISION PREPARED BY ANNIS, OSULLIVAN, VOLLEBEK LTD. BENCHMARK ASSESS CAN-NET VIRTUAL REFERENCE SYSTEM NETWORK.
10. FOR SITE PLAN INFORMATION, REFER TO SITE PLAN PREPARED BY M. DAVID BLAKELY ARCHITECT INC.
11. THESE DRAWINGS ARE NOT TO BE SCALED OR USED FOR LAYOUT PURPOSES.
12. ROADWAY SECTIONS REQUIRING GRADE RAISE TO PROPOSED SUB GRADE LEVEL TO BE FILLED WITH ACCEPTABLE NATIVE EARTH BORROW OR IMPORTED OPSS SELECTED SUBGRADE MATERIAL IF NATIVE MATERIAL IS DEFICIENT AS PER RECOMMENDATION OF GEOTECHNICAL ENGINEER.
13. IN AREAS WHERE EXISTING GROUND IS BELOW THE PROPOSED ELEVATION OF SEWER AND WATERMANS, GRADE RAISING AND FILLING IS TO BE IN ACCORDANCE WITH THE RECOMMENDATIONS OF THE GEOTECHNICAL REPORT. AS PER CITY GUIDELINES ALL WATERMANS IN FILL AREAS ARE TO BE TIED WITH RESTRAINING JOINTS AND THRUST BLOCKS.
14. THE CONTRACTOR SHALL IMPLEMENT THE EROSION AND SEDIMENT CONTROL PLAN PRIOR TO THE COMMENCEMENT OF ANY SITE CONSTRUCTION. ALL EROSION AND SEDIMENT CONTROL MEASURES SHALL BE INSTALLED TO THE SATISFACTION OF THE ENGINEER, OR ANY REGULATORY AGENCY. ALL EROSION AND SEDIMENT CONTROL MEASURES SHALL BE MAINTAINED UNTIL VEGETATION IS ESTABLISHED OR UNTIL THE START OF A SUBSEQUENT PHASE.
15. CONTRACTORS SHALL BE RESPONSIBLE FOR KEEPING CLEAN ALL ROADS WHICH BECOME COVERED IN DUST, DEBRIS AND/OR MUD AS A RESULT OF ITS CONSTRUCTION OPERATIONS.
16. THE CONTRACTOR SHALL BE RESPONSIBLE FOR ANY ADDITIONAL BEDDING OR ADDITIONAL STRENGTH PIPE SHOULD THE MAXIMUM OPSD TRENCH WIDTH BE EXCEEDED.
17. ALL PIPE, CULVERTS, STRUCTURES REFER TO NOMINAL INSIDE DIMENSIONS.
18. UNLESS SPECIFICALLY NOTED OTHERWISE, PIPE MATERIALS SHALL BE AS FOLLOWS:
- SANITARY SEWER TO BE PVC DR18
- PERFORATED STORM SEWERS IN REAR YARDS AND LANDSCAPE AREAS TO BE HDPE
- STORM SEWERS 375mm DIAMETER AND LESS TO BE PVC DR35
- STORM SEWERS 450mm DIAMETER AND GREATER TO BE CONCRETE, CLASS AS PER OPSD 807.010 OR 807.020, OR HIGHER.
FOR SHALLOW SEWERS, REFER TO CITY STANDARD S35.
19. ALL CONNECTIONS TO EXISTING WATERMANS ARE TO BE COMPLETED BY CITY FORCES. CONTRACTOR IS TO EXCAVATE, BACKFILL, COMPACT AND REINSTATE.
20. ANY WATERMAIN WITH LESS THAN 2.4m AND ANY SEWER WITH LESS THAN 2.0m DEPTH OF COVER REQUIRES THERMAL INSULATION AS PER CITY OF OTTAWA STANDARD W22 OR AS APPROVED BY THE ENGINEER.
21. ALL FIRE HYDRANTS AS PER CITY STANDARD W19, C/W 150mm \varnothing LEAD UNLESS OTHERWISE SPECIFIED.
22. ALL STUBBED SEWERS SHALL HAVE PRE-MANUFACTURED CAPS INSTALLED.
23. ALL CATCHBASINS SHALL HAVE A 600mm \varnothing SUMP. ALL CATCHBASIN MANHOLES, AND ALL STORM MANHOLES WITH OUTLETTING PIPE SIZES LESS THAN 900mm, SHALL HAVE A 300mm SUMP.
24. ALL SANITARY MANHOLES IN PONDING AREAS SHALL BE EQUIPPED WITH A WATERTIGHT COVER.
25. ALL SEWER SERVICE LATERALS WITH MAINLINE CONNECTIONS DEEPER THAN 5.0m REQUIRE A CONTROLLED SETTLEMENT JOINT.
26. EACH BUILDING SHALL BE EQUIPPED WITH A SANITARY AND STORM SEWER BACKWATER VALVE AND CLEAN-OUT ON ITS PRIMARY SERVICE, AS PER ONTARIO BUILDING CODE REQUIREMENTS (BY OTHERS).
27. THE SUBGRADE OF ALL STRUCTURES, PIPE, ROADS, SIDEWALKS, WALKWAYS, AND BUILDINGS SHALL BE INSPECTED BY THE GEOTECHNICAL ENGINEER PRIOR TO PROCEEDING WITH CONSTRUCTION.
28. TOP COURSE ASPHALT SHALL NOT BE PLACED UNTIL THE FINAL CCTV INSPECTION AND NECESSARY REPAIRS HAVE BEEN COMPLETED TO THE SATISFACTION OF THE ENGINEER AND THE CITY OF OTTAWA.

Notes & Legend

- MH-S Denotes Maintenance Hole (Sanitary)
- VC Valve Chamber (Watermain)
- G Underground Gas
- W Underground Water
- OHW Overhead Wires
- UP Utility Pole
- CB Catch Basin
- FH Fire Hydrant
- WV Water Valve
- GV Gas Valve
- GM Gas Meter
- HM Hydro Meter
- B Bollard
- CLF Chain Link Fence
- BF Board Fence
- RWS Stone Retaining Wall
- DT Deciduous Tree

CLIENT



COPYRIGHT

This drawing has been prepared solely for the intended use, thus any reproduction or distribution for any purpose other than authorized by Arcadis is forbidden. Written dimensions shall have precedence over scaled dimensions. Contractors shall verify and be responsible for all dimensions and conditions on the job, and Arcadis shall be informed of any variations from the dimensions and conditions shown on the drawing. Shop drawings shall be submitted to Arcadis for general conformance before proceeding with fabrication.

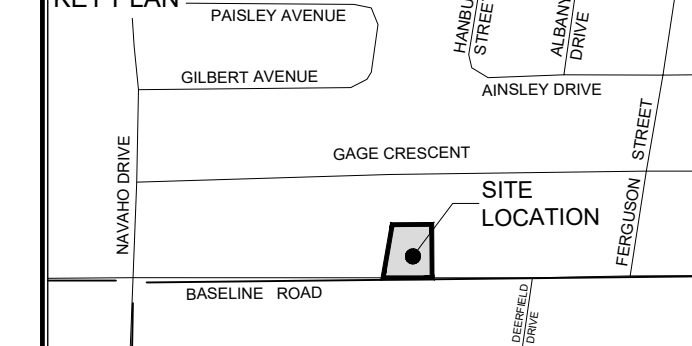
Arcadis Professional Services (Canada) Inc.
Formerly B I Group Professional Services (Canada) Inc.

ISSUES

No.	DESCRIPTION	DATE
1	ISSUED FOR SPA	2025-12-18
2	REVISED AS PER NEW SITE PLAN	2026-02-20
3	REVISED AS PER CITY COMMENTS	2026-04-30

SEE 010, 011, 012 FOR NOTES, LEGEND, CB TABLE, STREET SECTIONS AND DETAILS

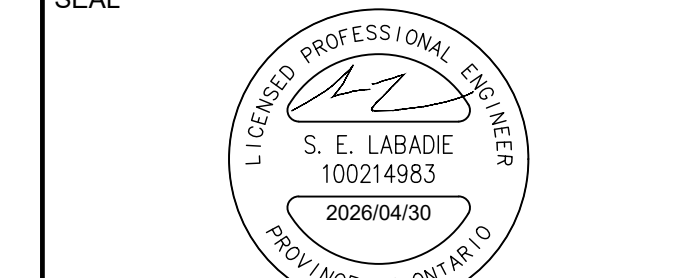
KEY PLAN



CONSULTANTS

- 1:150
- 0 1.5 3 4.5 7.5m

SEAL



PRIME CONSULTANT

ARCADIS
333 Preston Street - Suite 500
Ottawa ON K1S 5N4 Canada
tel 613 225 1311
www.arcadis.com

PROJECT

1773 & 1767 BASELINE ROAD
OTTAWA, ONTARIO

PROJECT NO:

30297182

DRAWN BY:

D.P.S.

CHECKED BY:

D.G.Y.

PROJECT MGR:

D.G.Y.

APPROVED BY:

S.E.L.

SHEET TITLE

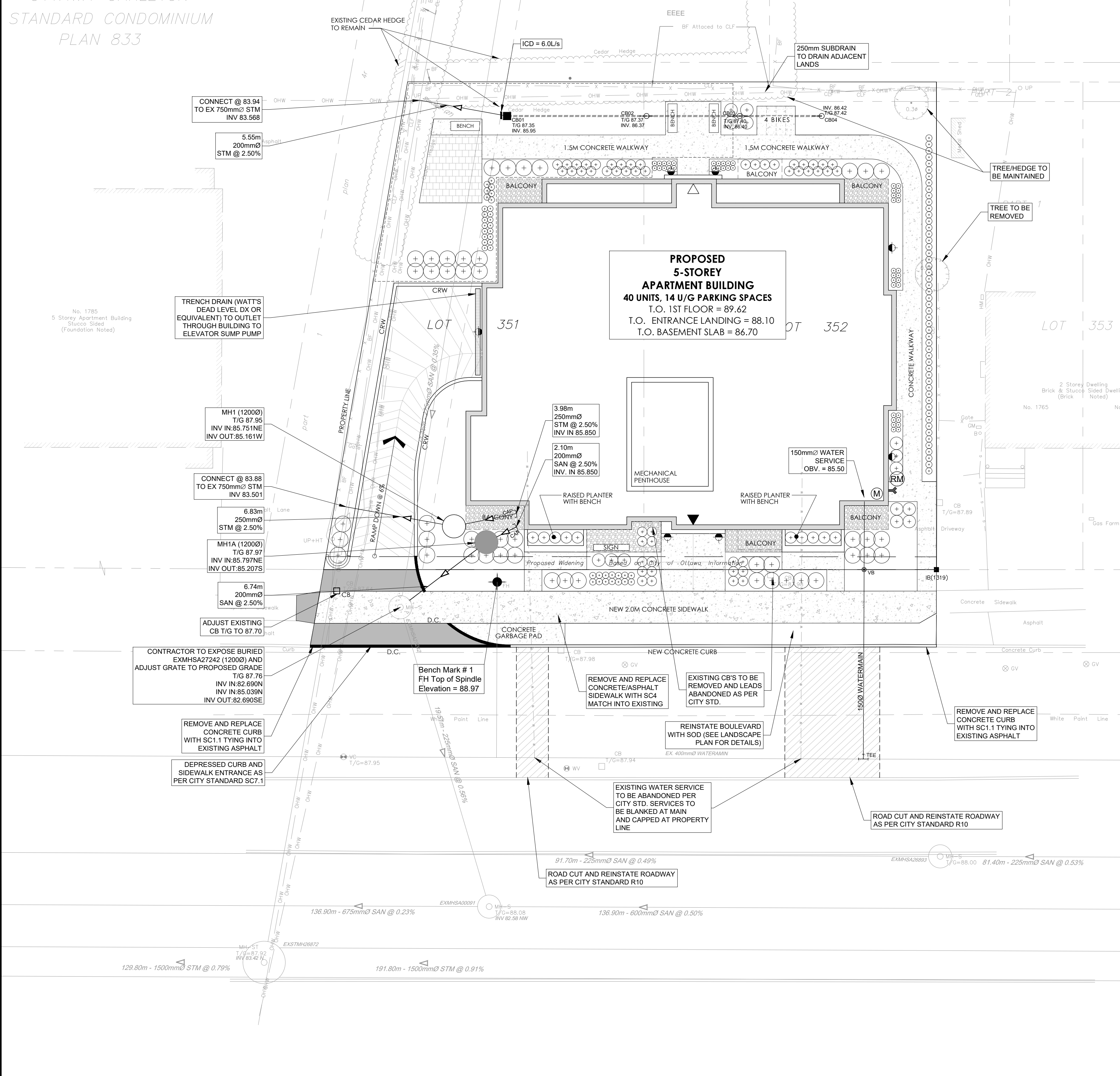
SITE SERVICING PLAN

SHEET NUMBER

C-001

ISSUE

3



FILE No. 19442
PLAN No. 19442
Last Saved: April 29, 2026, by slumad3150
Plotted: April 29, 2026 3:34:50 PM by Slumad, Don
C:\Users\slumad3150\Documents\Projects\182-Baseline Road Redevelopment\Project Files\10_WIP\04_CIVIL\Sheets\C-001_SITE SERVICING PLAN.dwg

Appendix B



ARCADIS IBI GROUP
 500-333 Preston Street
 Ottawa, Ontario K1S 5N4 Canada
 arcadis.com

WATERMAIN DEMAND CALCULATION SHEET

WATERMAIN DEMAND CALCULATION SHEET
 1773 Baseline Rd | Phoenix Homes
 x-6.0 | Rev #1 | 2025-09-17
 Prepared By: SL | Checked By: DY

NODE	RESIDENTIAL				NON-RESIDENTIAL (ICI)			AVERAGE DAILY DEMAND (l/s)			MAXIMUM DAILY DEMAND (l/s)			MAXIMUM HOURLY DEMAND (l/s)			FIRE DEMAND (l/min)
	1 Bedroom Apartment	2 Bedroom Apartment	3 Bedroom Apartment	POPULATION	INDUST. (ha)	COMM. (m2)	INSTIT. (pp)	RESIDENTIAL	ICI	TOTAL	RESIDENTIAL	ICI	TOTAL	RESIDENTIAL	ICI	TOTAL	
1773 Baseline	20	20		70.0				0.23		0.23	0.57		0.57	1.25		1.25	6,300

POPULATION DENSITY		WATER DEMAND RATES		PEAKING FACTORS		FIRE DEMANDS	
1 Bedroom Apartment	1.4 persons/unit	Residential	280 l/cap/day	Maximum Daily		Single Family	
2 Bedroom Apartment	2.1 persons/unit	Commercial Shopping Center	2,500 L/(1000m2)/day	Residential	2.5 x avg. day	Semi Detached & Townhouse	
3 Bedroom Apartment	3.1 persons/unit	Institutional	75 l/cap/day	Commercial	1.5 x avg. day	Medium Density	6,300 L/min
				Maximum Hourly			
				Residential	2.2 x avg. day		
				Commercial	1.8 x avg. day		



OBC WATER SUPPLY CALCULATIONS



Required Fire Water Supply (Q) per OBC:	
$Q = K V S_{tot}$	Q = Minimum Supply of water in litres
	K = Water Supply Coefficient from Table 1
	V = Total Building Volume in Cubic Meters
	S_{tot} = Total of Spaital coefficient values from property line exposures on all sides
	$S_{tot} = 1.0 + [S_{side\ 1} + S_{side\ 2} + \dots]$

Water Supply Coefficient (K)	
Building Group Classification:	C - Residential Occupancies
From Table 1, K =	23

Building Volume (V)	
Block 11 (10 Units)	
Floor Area	480 m ²
No. Floors	5
height =	3 m per floor
Building Volume (V):	7200 m ³

Spatial Coefficient (S):			
Side	Dist	S_{coeff}	
Front	20+	0	
Back	14.6	0	
Left	16.3	0	
Right	5.6	0.5	
Total		0.5	Therefore $S_{tot} = 1.5$

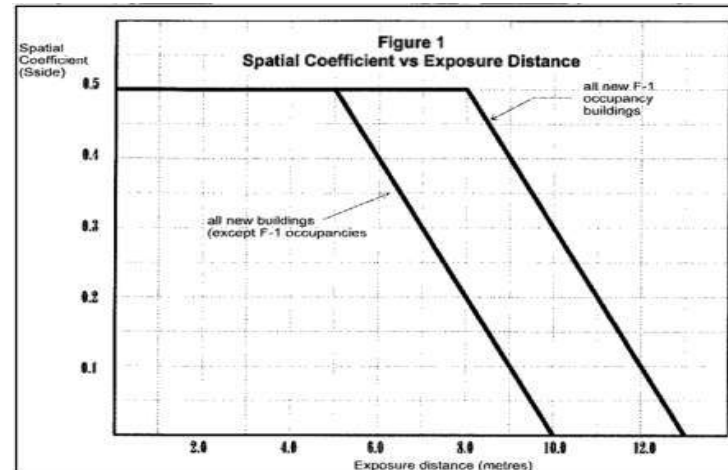
Required Fire Water Supply (Q) per OBC:	
$Q = K V S_{tot}$	
$Q = (23) (7200) (1.5)$	
$Q = 248400$	
From Table 2: $Q > 190000\ L$ & $< 270000\ L$	
Therefore Target Flow = 6300 l/min	

OBC Tables and Figures

Table 1					
Water Supply Coefficient - K					
Type of Construction	Classification by Group or Division in Accordance with Table 3.1.2.1. of the Building Code				
	A-2 B-1 B-2 B-3 C D	A-4 F-3	A-1 A-3	E F-2	F-1
Building is of noncombustible construction with fire separations and fire-resistance ratings provided in accordance with Subsection 3.2.2., including loadbearing walls, columns and arches.	10	12	14	17	23
Building is of noncombustible construction or of heavy timber construction conforming to Article 3.1.4.6. Floor assemblies are fire separations but with no fire-resistance rating. Roof assemblies, mezzanines, loadbearing walls, columns and arches do not have a fire-resistance rating.	16	19	22	27	37
Building is of combustible construction with fire separations and fire-resistance ratings provided in accordance with Subsection 3.2.2., including loadbearing walls, columns and arches. Noncombustible construction may be used in lieu of fire-resistance rating where permitted in Subsection 3.2.2.	18	22	25	31	41
Building is of combustible construction. Floor assemblies are fire separations but with no fire-resistance rating. Roof assemblies, mezzanines, loadbearing walls, columns and arches do not have a fire-resistance rating.	23	26	32	39	53
Column 1	2	3	4	5	6

Table 2	
Part 3 Buildings under the Building Code	Required Minimum Water Supply Flow Rate, L/min
One-storey building with building area not exceeding 600 m ²	1 800
All other buildings	2 700 (if $Q \leq 108\ 000\ L)^{10}$
	3 600 (if $Q > 108\ 000\ L$ and $\leq 135\ 000\ L)^{10}$
	4 500 (if $Q > 135\ 000\ L$ and $\leq 162\ 000\ L)^{10}$
	5 400 (if $Q > 162\ 000\ L$ and $\leq 190\ 000\ L)^{10}$
	6 300 (if $Q > 190\ 000\ L$ and $\leq 270\ 000\ L)^{10}$
	9 000 (if $Q > 270\ 000\ L)^{10}$

<https://www.buildingcode.online/11.html>



Labadie, Sam

From: Rasool, Rubina <Rubina.Rasool@ottawa.ca>
Sent: October 21, 2025 9:07 AM
To: Labadie, Sam
Cc: Yannoulopoulos, Demetrius
Subject: RE: 1773 Baseline - Boundary Condition Request
Attachments: 1773 Baseline Road October 2025.pdf

Arcadis Warning: Exercise caution with email messages from external sources such as this message. Always verify the sender and avoid clicking on links or scanning QR codes unless certain of their authenticity.

Hello,

Please see below the WBC.

The following are boundary conditions, HGL, for hydraulic analysis at 1773 Baseline Road (zone 2W2C) assumed to be connected via the 406 mm watermain on Baseline Road. (see attached PDF for location).

Minimum HGL = 126.2 m

Maximum HGL = 132.4 m

Max Day + Fire Flow (105.0 L/s) = 125.7 m

These are for current conditions and are based on computer model simulation.

Disclaimer: The boundary condition information is based on current operation of the city water distribution system. The computer model simulation is based on the best information available at the time. The operation of the water distribution system can change on a regular basis, resulting in a variation in boundary conditions. The physical properties of watermains deteriorate over time, as such must be assumed in the absence of actual field test data. The variation in physical watermain properties can therefore alter the results of the computer model simulation.

Thank you,
Simone

Rubina

Rubina Rasool
Project Manager
Planning, Infrastructure and Economic Development Department
Development Review – West Branch
City of Ottawa
110 Laurier Avenue West Ottawa, ON K1P 1J1
613-580-2424 Ext. 24221
rubina.rasool@ottawa.ca

Classified as City of Ottawa - Internal / Ville d'Ottawa - classé interne

From: Labadie, Sam <samantha.labadie@arcadis.com>
Sent: October 06, 2025 10:17 AM
To: Rasool, Rubina <Rubina.Rasool@ottawa.ca>
Cc: demetrius.yannoulopoulos <demetrius.yannoulopoulos@arcadis.com>
Subject: RE: 1773 Baseline - Boundary Condition Request

CAUTION: This email originated from an External Sender. Please do not click links or open attachments unless you recognize the source.

ATTENTION : Ce courriel provient d'un expéditeur externe. Ne cliquez sur aucun lien et n'ouvrez pas de pièce jointe, excepté si vous connaissez l'expéditeur.

Thanks Rubina. We're getting mixed requests from the city recently, some strongly prefer OBC for buildings under 9,000 L/min per tech bulletin 2024-05. If there's an issue, let us know.

Wanted to make sure this request wasn't lost.

Sam Labadie P.Eng
Civil Engineer
Arcadis Professional Services (Canada) Inc.
Suite 500, 333 Preston Street | Ottawa | ON | K1S 5N4 | Canada
C: +1 613 899 5717
www.arcadis.com



From: Rasool, Rubina <Rubina.Rasool@ottawa.ca>
Sent: October 6, 2025 10:09 AM
To: Labadie, Sam <samantha.labadie@arcadis.com>
Cc: Yannoulopoulos, Demetrius <demetrius.yannoulopoulos@arcadis.com>
Subject: RE: 1773 Baseline - Boundary Condition Request

Arcadis Warning: Exercise caution with email messages from external sources such as this message. Always verify the sender and avoid clicking on links or scanning QR codes unless certain of their authenticity.

Hi Sam,

I have received your request for water boundary conditions. Typically, the Water Distribution team requires the demands in FUS for internal use; however, I am seeing if they are able to also accept the demands in OBC. OBC demands can be used for the site plan analysis provided they meet our technical memos/guidelines.

Thanks,

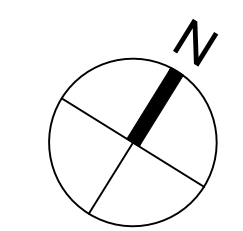
Rubina

Rubina Rasool
Project Manager
Planning, Infrastructure and Economic Development Department
Development Review – West Branch
City of Ottawa

Appendix C

Appendix D

LOCATION				AREA (Ha)																RATIONAL DESIGN FLOW												SEWER DATA																								
STREET	AREA ID	FROM	TO	C=0.20	C=0.55	C=0.56	C=0.60	C=0.67	C=0.48	C=0.65	C=0.69	C=0.70	C=0.77	C=0.81	C=0.84	C=0.87	C=0.88	C=0.90	IND 2.78AC	CUM 2.78AC	INLET (min)	TIME IN PIPE	TOTAL (min)	i (2) (mm/hr)	i (5) (mm/hr)	i (10) (mm/hr)	i (100) (mm/hr)	2yr PEAK FLOW (L/s)	5yr PEAK FLOW (L/s)	10yr PEAK FLOW (L/s)	100yr PEAK FLOW (L/s)	FIXED FLOW IND	DESIGN FLOW (L/s)	CAPACITY (L/s)	LENGTH (m)	PIPE SIZE (mm)			SLOPE (%)	VELOCITY (m/s)	AVAIL CAP (2yr)															
																																		DIA	W	H			(L/s)	(%)																
AMENITY AREA		CB1	EX			0.03													0.05	0.05	10.00	0.06	10.06	76.81	104.19	122.14	178.56	3.59	4.87	5.70	8.34		0.00	4.87	54.10	5.55	200				2.50	1.668	49.23	91.01%												
BUILDING		BLDG	MH1															0.06	0.15	0.15	10.00	0.03	10.03	76.81	104.19	122.14	178.56	11.53	15.64	18.34	26.81		0.00	15.64	98.09	3.98	250				2.50	1.936	82.45	84.05%												
		MH1	EX																0.00	0.15	10.03	0.06	10.09	76.67	104.01	121.93	178.25	11.51	15.61	18.30	26.76		0.00	15.61	98.09	6.83	250				2.50	1.936	82.48	84.08%												
Definitions: Q = 2.78CIA, where: Q = Peak Flow in Litres per Second (L/s) A = Area in Hectares (Ha) i = Rainfall intensity in millimeters per hour (mm/hr) [i = 732.951 / (TC+6.199)^0.810] 2 YEAR [i = 998.071 / (TC+6.053)^0.814] 5 YEAR [i = 1174.184 / (TC+6.014)^0.816] 10 YEAR [i = 1735.688 / (TC+6.014)^0.820] 100 YEAR				Notes: 1. Mannings coefficient (n) = 0.013																Designed: MP Checked: SL Dwg. Reference: 30297182-500												Revision <table border="1"> <thead> <tr> <th>No.</th> <th>Revision</th> <th>Date</th> </tr> </thead> <tbody> <tr> <td>1.</td> <td>Submission No. 1 for City Review</td> <td>2025-12-18</td> </tr> <tr> <td>2.</td> <td>Submission No. 2 for City Review</td> <td>2026-04-30</td> </tr> </tbody> </table> <table border="1"> <thead> <tr> <th>File Reference:</th> <th>Date:</th> <th>Sheet No:</th> </tr> </thead> <tbody> <tr> <td>30297182-05</td> <td>2026-04-30</td> <td>1 of 1</td> </tr> </tbody> </table>										No.	Revision	Date	1.	Submission No. 1 for City Review	2025-12-18	2.	Submission No. 2 for City Review	2026-04-30	File Reference:	Date:	Sheet No:	30297182-05	2026-04-30	1 of 1
No.	Revision	Date																																																						
1.	Submission No. 1 for City Review	2025-12-18																																																						
2.	Submission No. 2 for City Review	2026-04-30																																																						
File Reference:	Date:	Sheet No:																																																						
30297182-05	2026-04-30	1 of 1																																																						

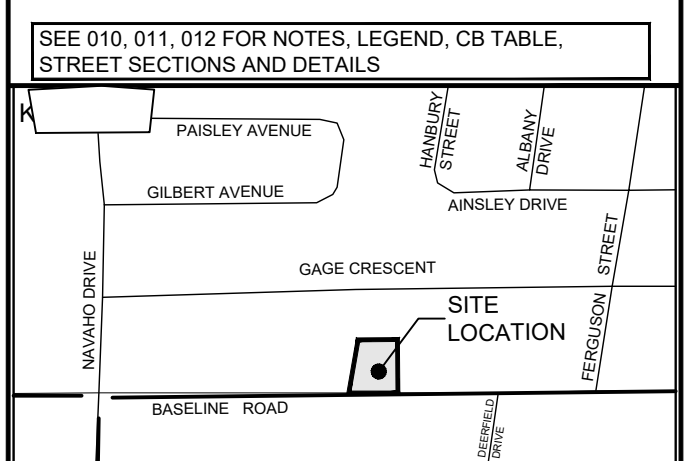


COPYRIGHT
 This drawing has been prepared solely for the intended use, thus any reproduction or distribution for any purpose other than authorized by Arcadis is forbidden. Written dimensions shall have precedence over scaled dimensions. Contractors shall verify and be responsible for all dimensions and conditions on the job, and Arcadis shall be informed of any variations from the dimensions and conditions shown on the drawing. Shop drawings shall be submitted to Arcadis for general conformance before proceeding with fabrication.

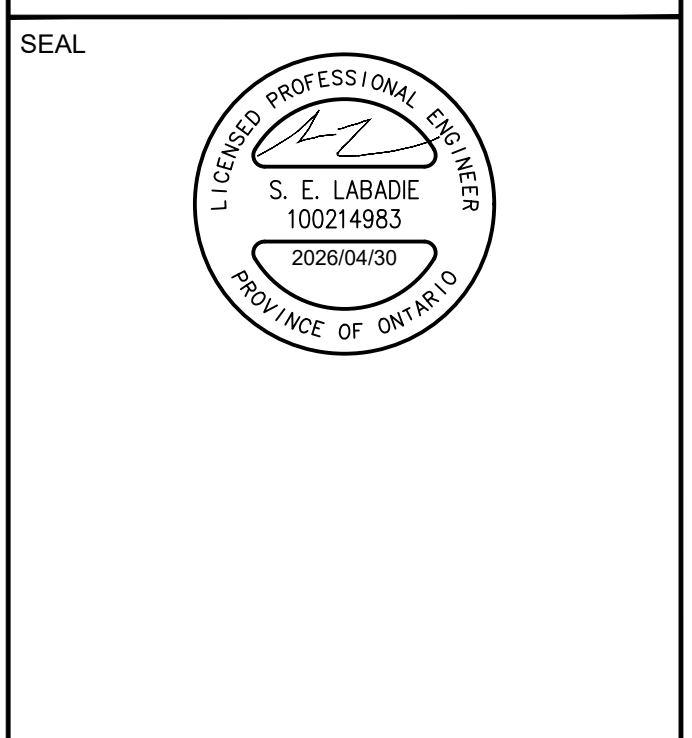
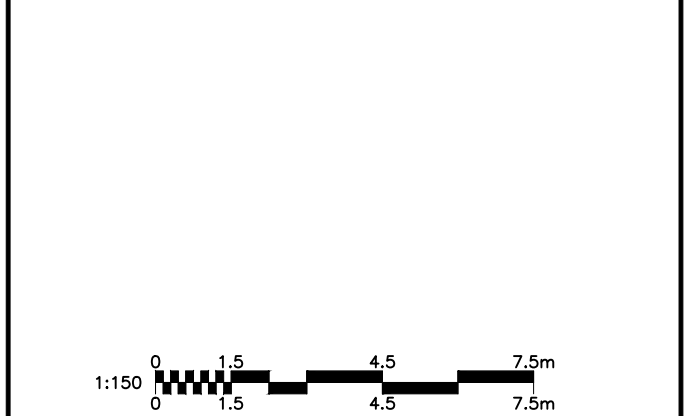
Arcadis Professional Services (Canada) Inc.
 formerly B Group Professional Services (Canada) Inc.

ISSUES

No.	DESCRIPTION	DATE
1	ISSUED FOR SPA	2025-12-18
2	REVISED AS PER NEW SITE PLAN	2026-02-20
3	REVISED AS PER CITY COMMENTS	2026-04-30



CONSULTANTS



PRIME CONSULTANT
ARCADIS
 333 Preston Street - Suite 500
 Ottawa ON K1S 5N4 Canada
 tel 613 225 1311
 www.arcadis.com

PROJECT
 1773 & 1767 BASELINE ROAD
 OTTAWA, ONTARIO

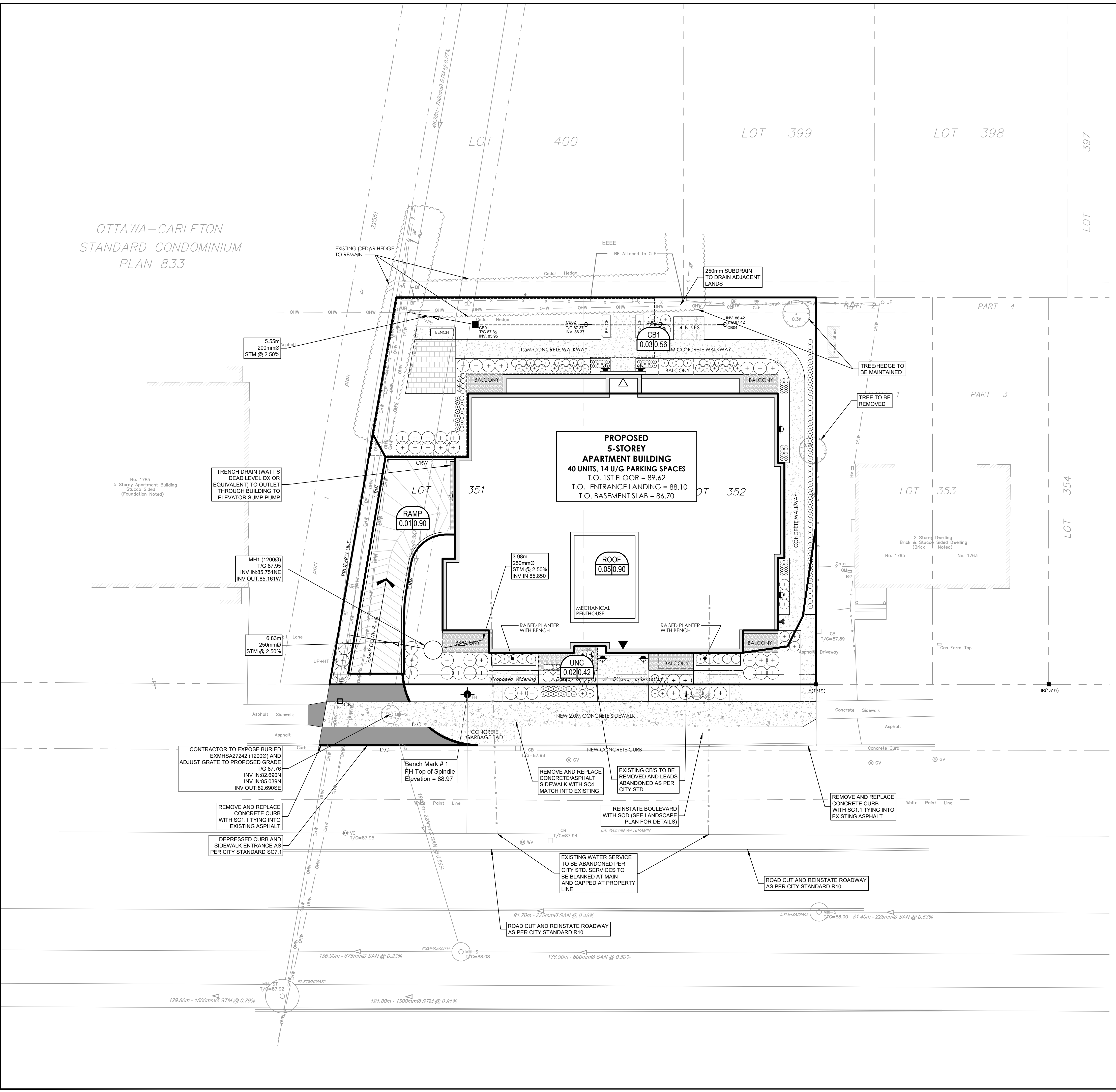
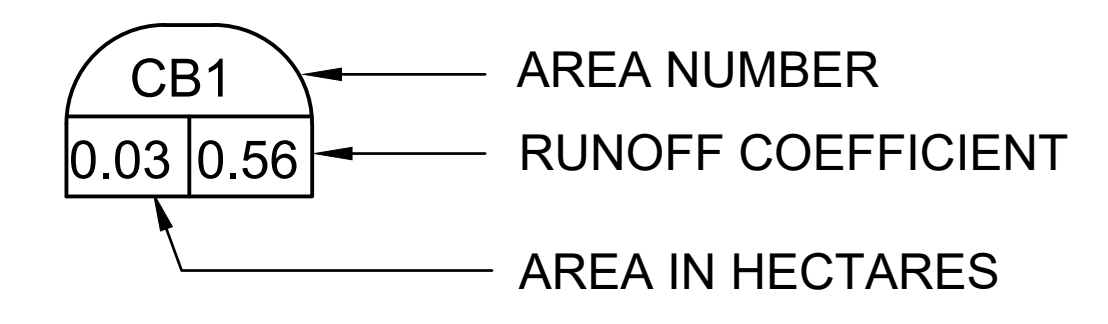
PROJECT NO:
 30297182
 DRAWN BY: D.P.S. CHECKED BY: D.G.Y.
 PROJECT MGR: D.G.Y. APPROVED BY: S.E.L.

SHEET TITLE
 SITE STORM DRAINAGE AREA
 PLAN

SHEET NUMBER
C-500 ISSUE
3

OTTAWA-CARLETON
 STANDARD CONDOMINIUM
 PLAN 833

LEGEND :



File Location: C:\Users\slam3159\Documents\Projects\10_WIP\04_CIVIL\Sheets\C500 SITE STORM DRAINAGE AREA PLAN.dwg
 Last Saved: April 23, 2026, by slam3159
 Plotter: April 29, 2026, 3:35:24 PM by Slama, Don
 SCALE CHECK
 PLAN No. 19442
 FILE No. D07-12-25-0169



IBI GROUP
 400-333 Preston Street
 Ottawa, Ontario K1S 5N4 Canada
 tel 613 225 1311 fax 613 225 9868
 ibigroup.com

PROJECT: 1773 Baseline
DATE: 2026-04-30
FILE: 30297182.05
REV #: 2
DESIGNED BY: SEL
CHECKED BY: D.Y.

STORMWATER MANAGEMENT

Formulas and Descriptions

$i_{2yr} = 1:2 \text{ year Intensity} = 732.951 / (T_c + 6.199)^{0.810}$
 $i_{5yr} = 1:5 \text{ year Intensity} = 998.071 / (T_c + 6.053)^{0.814}$
 $i_{100yr} = 1:100 \text{ year Intensity} = 1735.688 / (T_c + 6.014)^{0.820}$
 $T_c = \text{Time of Concentration (min)}$
 $C = \text{Average Runoff Coefficient}$
 $A = \text{Area (Ha)}$
 $Q = \text{Flow} = 2.78CiA \text{ (L/s)}$

Maximum Allowable Release Rate

Restricted Flowrate (based on C=0.50 Tc=10min)

$C = 0.5$
 $T_c = 10 \text{ min}$
 $i_{5yr} = 104.19 \text{ mm/hr}$
 $A_{site} = 0.11 \text{ Ha}$

$Q_{restricted} = 15.93 \text{ L/s}$

UNC Uncontrolled Release ($Q_{uncontrolled} = 2.78 * C * i_{100yr} * A_{uncontrolled}$)

$C = 0.53$
 $T_c = 10 \text{ min}$
 $i_{100yr} = 178.56 \text{ mm/hr}$
 $A_{uncontrolled} = 0.0153 \text{ Ha}$

$Q_{uncon} = 3.99 \text{ L/s}$

RAMP Uncontrolled Release ($Q_{uncontrolled} = 2.78 * C * i_{100yr} * A_{uncontrolled}$)

$C = 1.00$
 $T_c = 10 \text{ min}$
 $i_{100yr} = 178.56 \text{ mm/hr}$
 $A_{uncontrolled} = 0.0078 \text{ Ha}$

$Q_{uncon} = 3.87 \text{ L/s}$

Maximum Allowable Release Rate ($Q_{max \text{ allowable}} = Q_{restricted} - Q_{uncontrolled}$)

$Q_{max \text{ allowable}} = 8.07 \text{ L/s}$

MODIFIED RATIONAL METHOD (100-Year, & 2-Year Ponding)

Drainage Area		ROOF			
Area (Ha)	0.05	Restricted Flow Q_r (L/s)= 2.00			
C =	1.00				
100-Year Ponding					
T_c Variable (min)	i_{100yr} (mm/hour)	Peak Flow $Q_p = 2.78 * C * i_{100yr} * A$ (L/s)	Q_r (L/s)	$Q_p - Q_r$ (L/s)	Volume 100yr (m^3)
56	58.83	8.18	2.00	6.18	20.758
58	57.32	7.97	2.00	5.97	20.768
59	56.60	7.87	2.00	5.87	20.770
60	55.89	7.77	2.00	5.77	20.770
62	54.54	7.58	2.00	5.58	20.763

Storage (m^3)				
Overflow	Required	Surface	Sub-surface	Balance
0.00	20.77	28.13		0.00

Drainage Area		ROOF			
Area (Ha)	0.05	Restricted Flow Q_r (L/s)= 2.00			
C =	0.90				
2-Year Ponding					
T_c Variable (min)	i_{2yr} (mm/hour)	Peak Flow $Q_p = 2.78 * C * i_{2yr} * A$ (L/s)	Q_r (L/s)	$Q_p - Q_r$ (L/s)	Volume 2yr (m^3)
23	47.66	5.96	2.00	3.96	5.47
24	46.37	5.80	2.00	3.80	5.47
25	45.17	5.65	2.00	3.65	5.48
26	44.03	5.51	2.00	3.51	5.47
27	42.95	5.37	2.00	3.37	5.46

Storage (m^3)				
Overflow	Required	Surface	Sub-surface	Balance
0.00	5.48	28.13		0.00

Drainage Area		CB1			
Area (Ha)	0.03	Restricted Flow Q_r (L/s)= 6.00			
C =	0.70				
100-Year Ponding					
T_c Variable (min)	i_{100yr} (mm/hour)	Peak Flow $Q_p = 2.78 * C * i_{100yr} * A$ (L/s)	Q_r (L/s)	$Q_p - Q_r$ (L/s)	Volume 100yr (m^3)
5	242.70	14.17	6.00	8.17	2.451
7	211.67	12.36	6.00	6.36	2.670
8	199.20	11.63	6.00	5.63	2.702
9	188.25	10.99	6.00	4.99	2.695
11	169.91	9.92	6.00	3.92	2.587

Storage (m^3)				
Overflow	Required	Surface	Sub-surface	Balance
0.00	2.70	4.05	0.64	0.00

*Vol of CB+TCB*2

Drainage Area		CB1			
Area (Ha)	0.03	Restricted Flow Q_r (L/s)= 6.00			
C =	0.56				
2-Year Ponding					
T_c Variable (min)	i_{2yr} (mm/hour)	Peak Flow $Q_p = 2.78 * C * i_{2yr} * A$ (L/s)	Q_r (L/s)	$Q_p - Q_r$ (L/s)	Volume 2yr (m^3)
-1	192.83	9.01	6.00	3.01	-0.18
0	167.22	7.81	6.00	1.81	0.00
1	148.14	6.92	6.00	0.92	0.06
2	133.33	6.23	6.00	0.23	0.03
3	121.46	5.67	6.00	-0.33	-0.06

Storage (m^3)				
Overflow	Required	Surface	Sub-surface	Balance
0.00	0.06	4.05	0.64	0.00

RUNOFF COEFFICIENT CALCULATION SHEET

RESTRICTED

CB1	Area (m²)	C
Softscape	166	0.20
Hardscape	177	0.90
Total	343	0.56

UNRESTRICTED

UNC	Area (m²)	C
Softscape	106	0.20
Hardscape	47	0.90
Total	153	0.42



Adjustable Accutrol Weir

Tag: _____

Adjustable Flow Control for Roof Drains

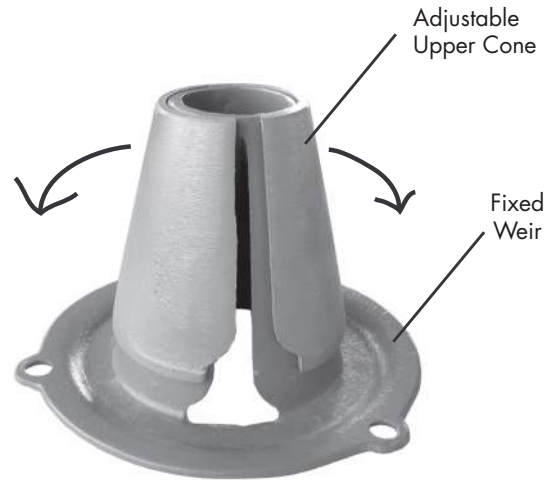
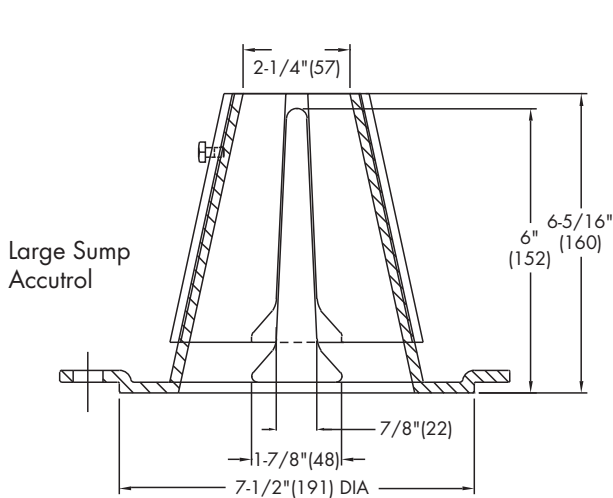
ADJUSTABLE ACCUTROL (for Large Sump Roof Drains only)

For more flexibility in controlling flow with heads deeper than 2", Watts Drainage offers the Adjustable Accutrol. The Adjustable Accutrol Weir is designed with a single parabolic opening that can be covered to restrict flow above 2" of head to less than 5 gpm per inch, up to 6" of head. To adjust the flow rate for depths over 2" of head, set the slot in the adjustable upper cone according to the flow rate required. Refer to Table 1 below.
 Note: Flow rates are directly proportional to the amount of weir opening that is exposed.

EXAMPLE:

For example, if the adjustable upper cone is set to cover 1/2 of the weir opening, flow rates above 2" of head will be restricted to 2-1/2 gpm per inch of head.

Therefore, at 3" of head, the flow rate through the Accutrol Weir that has 1/2 the slot exposed will be:
 [5 gpm (per inch of head) x 2 inches of head] + 2-1/2 gpm (for the third inch of head) = 12-1/2 gpm.



1/2 Weir Opening Exposed Shown Above

TABLE 1. Adjustable Accutrol Flow Rate Settings

Weir Opening Exposed	1"	2"	3"	4"	5"	6"
	Flow Rate (gallons per minute)					
Fully Exposed	5	10	15	20	25	30
3/4	5	10	13.75	17.5	21.25	25
1/2	5	10	12.5	15	17.5	20
1/4	5	10	11.25	12.5	13.75	15
Closed	5	5	5	5	5	5

Job Name _____
 Job Location _____
 Engineer _____

Contractor _____
 Contractor's P.O. No. _____
 Representative _____

Watts product specifications in U.S. customary units and metric are approximate and are provided for reference only. For precise measurements, please contact Watts Technical Service. Watts reserves the right to change or modify product design, construction, specifications, or materials without prior notice and without incurring any obligation to make such changes and modifications on Watts products previously or subsequently sold.

USA: Tel: (800) 338-2581 • Fax: (828) 248-3929 • Watts.com
 Canada: Tel: (905) 332-4090 • Fax: (905) 332-7068 • Watts.ca
 Latin America: Tel: (52) 81-1001-8600 • Fax: (52) 81-8000-7091 • Watts.com



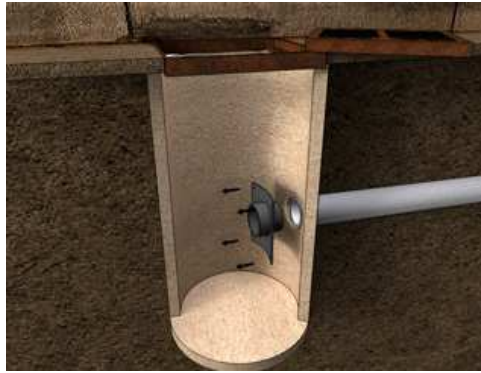
Square CB Installation Notes:

1. Materials and tooling verification:
 - Tooling: impact drill, 3/8'' concrete bit, torque wrench for 9/16'' nut, hand hammer, level, and marker.
 - Material: (4) concrete anchor 3/8x3-1/2, (4) washers, (4) nuts
2. Use the mounting wall plate to locate and mark the hole (4) pattern on the catch basin wall. You should use a level to ensure that the plate is at the horizontal.
3. Use an impact drill with a 3/8'' concrete bit to make the four holes at a minimum of 1-1/2'' depth up to 2-1/2''. Clean the concrete dust from the holes.
4. Install the anchors (4) in the holes by using a hammer. Put the nuts on the top of the anchors to protect the threads when you will hit the anchors with the hammer. Remove the nuts on the ends of the anchors
5. Install the wall mounting plate on the anchors and screw the nut in place with a maximum torque of 40 N.m (30 lbf-ft). There should be no gap between the wall mounting plate and the catch basin wall.
6. From ground above using a reach bar, lower the device by hooking the end of the reach bar to the handle of the LMF device. Align the triangular plate portion into the mounting wall plate. Push down the device to be sure it has centered in to the wall mounting plate and has created a seal.



Round CB Installation Notes: (Refer to square install notes above for steps 1 , 3, & 4)

2. Use spigot catch basin wall plate to locate and mark the hole (4) pattern on the catch basin wall. You should use a level to ensure that the plate is at the horizontal.
5. Install the CB spigot wall plate on the anchors and screw the 4 nuts in place with a maximum torque of 40 N.m (30 lb-ft). There should be no gap between the CB spigot wall plate and the catch basin wall.
6. Apply solvent cement on the hub of the universal mounting plate and the spigot of the spigot CB wall plate. Slide the hub over the spigot. Make sure the universal mounting plate is at the horizontal and its hub is completely inserted onto the spigot. Normally, the corners of the universal mounting plate hub adapter should touch the catch basin wall.
7. From ground above using a reach bar, lower the ICD device by hooking the end of the reach bar to the handle of the ICD device. Align the triangular plate portion into the mounting wall plate. Push down the device to be sure it has centered into the mounting plate and has created a seal.



CAUTION/WARNING/DISCLAIM:

- Verify that the inlet(s) pipe(s) is not protruding into the catch basin. If it is, cut it back so that the inlet pipe is flush with the catch basin wall.
- Any required cement in the installation must be approved for PVC.
- The solvent cement should not be used below 0°C (32°F) or in a high humidity environment. Please refer to the IPEX solvent cement guide to confirm required curing times or attend the IPEX [Online Solvent Cement Training Course](#).
- Call your IPEX representative for more information or if you have any questions about our products.

IPEX TEMPEST Inlet Control Devices Technical Specification

General

Inlet control devices (ICD's) are designed to provide flow control at a specified rate for a given water head level and also provide odour and floatable control where specified. All ICD's will be IPEX Tempest or approved equal.

All devices shall be removable from a universal mounting plate. An operator from street level using only a T-bar with a hook will be able to retrieve the device while leaving the universal mounting plate secured to the catch basin wall face. The removal of the TEMPEST devices listed above must not require any unbolting or special manipulation or any special tools.

High Flow (HF) Sump devices will consist of a removable threaded cap which can be accessible from street level with out entry into the catchbasin (CB). The removal of the threaded cap shall not require any special tools other than the operator's hand.

ICD's must have no moving parts.

Materials

ICD's are to be manufactured from Polyvinyl Chloride (PVC) or Polyurethane material, designed to be durable enough to withstand multiple freeze-thaw cycles and exposure to harsh elements.

The inner ring seal will be manufactured using a Buna or Nitrile material with hardness between Duro 50 and Duro 70.

The wall seal is to be comprised of a 3/8" thick Neoprene Closed Cell Sponge gasket which is attached to the back of the wall plate.

All hardware will be made from 304 stainless steel.

Dimensioning

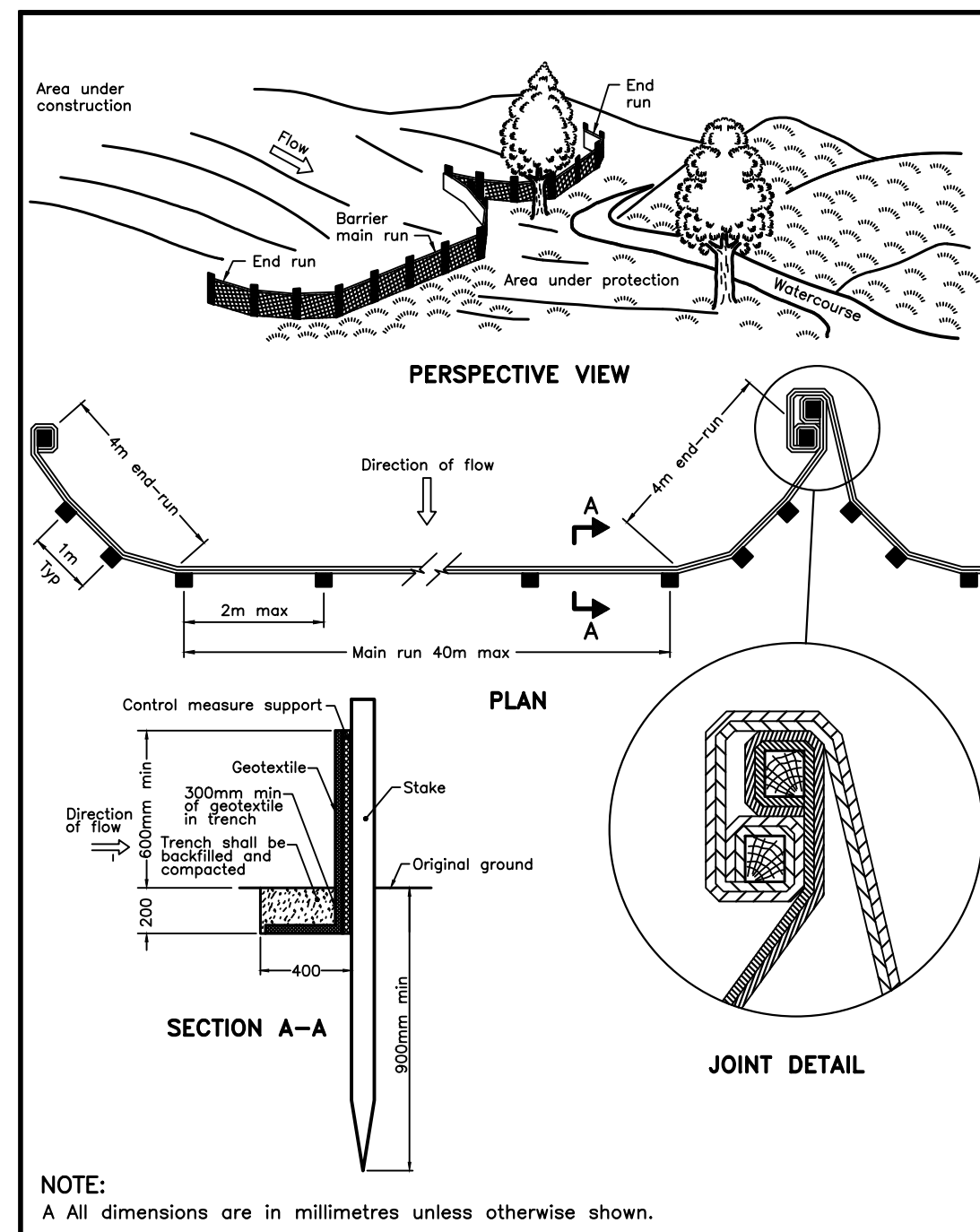
The Low Medium Flow (LMF), High Flow (HF) and the High Flow (HF) Sump shall allow for a minimum outlet pipe diameter of 200mm with a 600mm deep Catch Basin sump.

Installation

Contractor shall be responsible for securing, supporting and connecting the ICD's to the existing influent pipe and catchbasin/manhole structure as specified and designed by the Engineer.

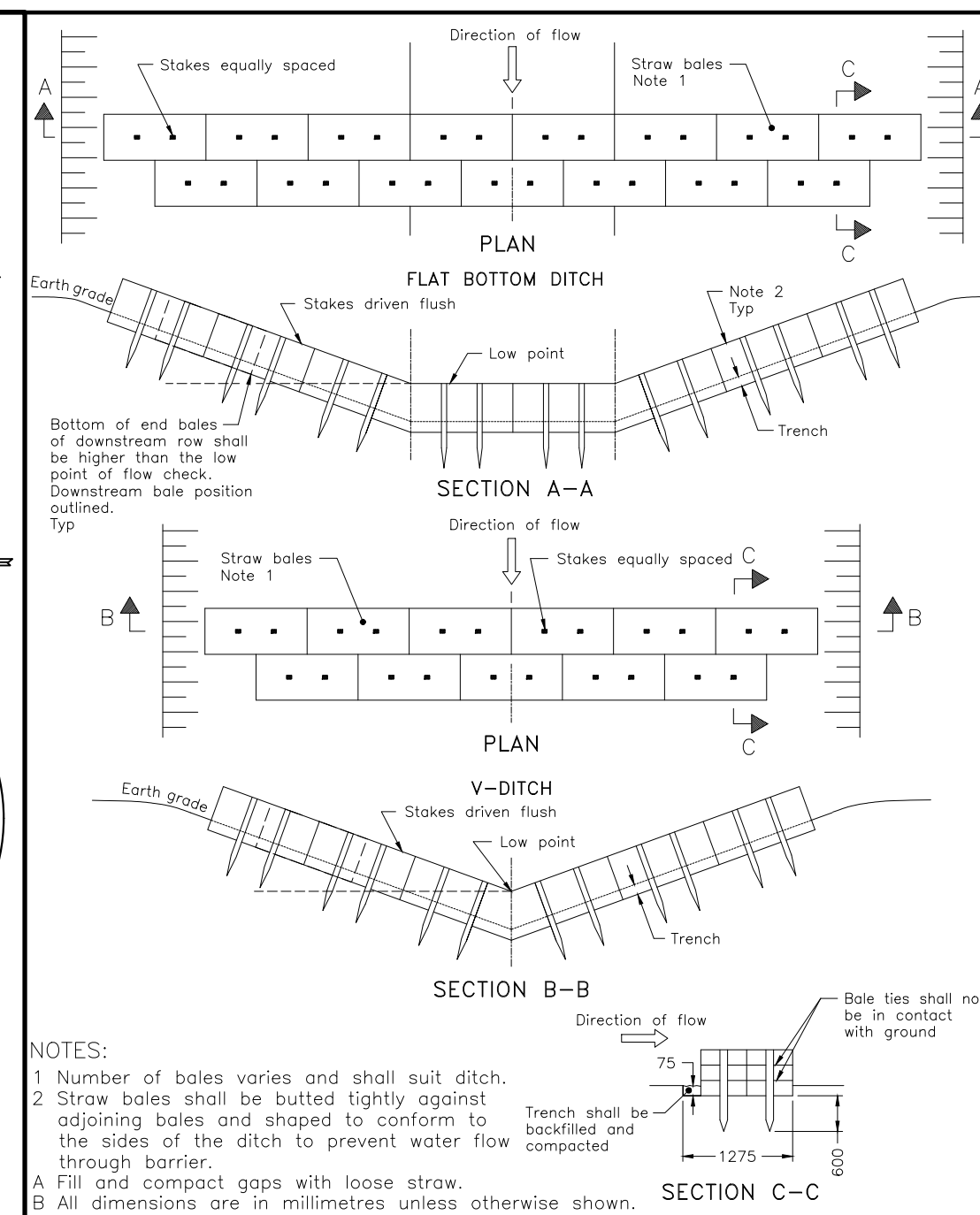


Appendix E



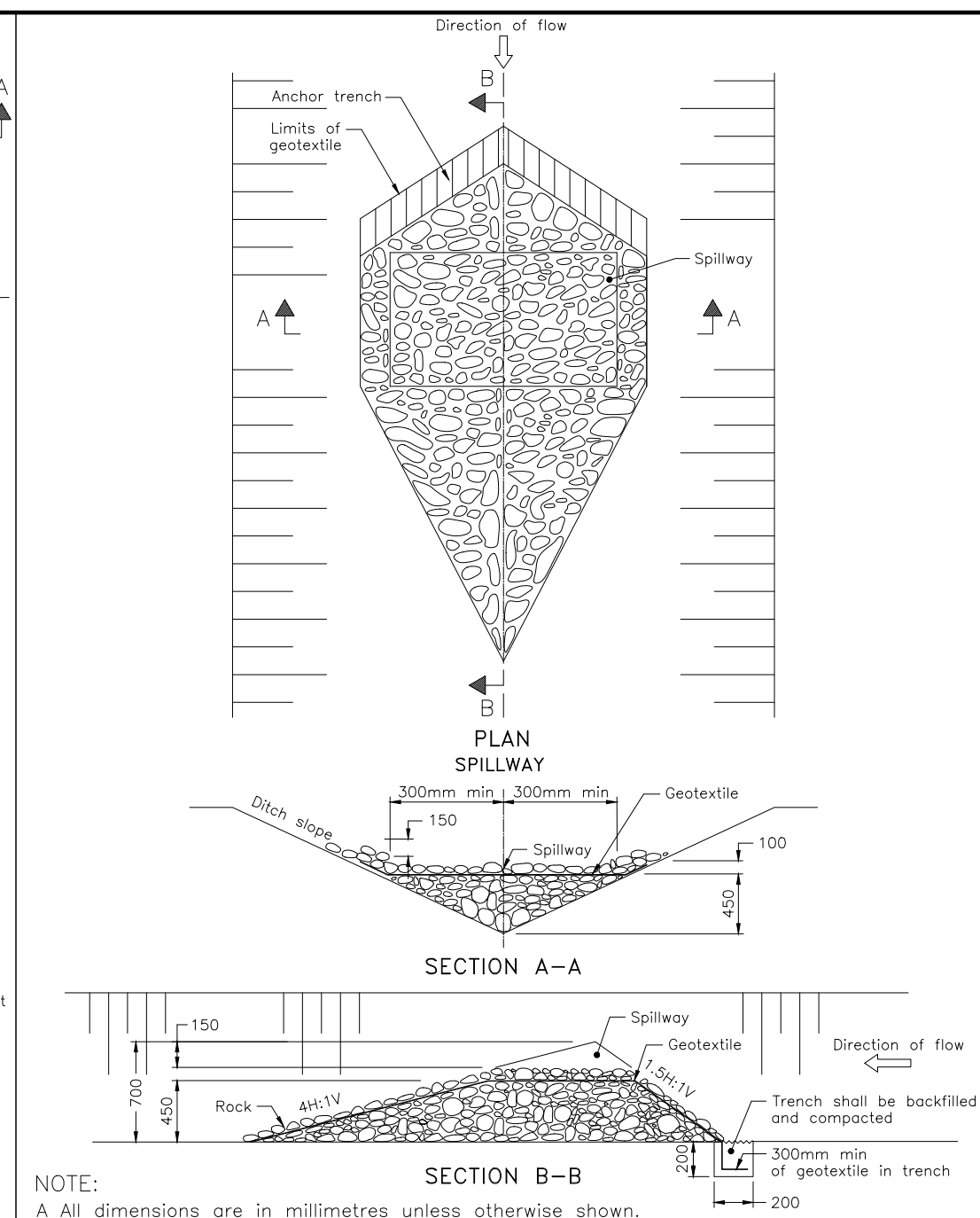
NOTE:
A All dimensions are in millimetres unless otherwise shown.

ONTARIO PROVINCIAL STANDARD DRAWING	Nov 2021	Rev 3
HEAVY-DUTY SILT FENCE BARRIER		
		OPSD 219.130



NOTE:
1 Number of bales varies and shall suit ditch.
2 Straw bales shall be butted tightly against adjoining bales and shaped to conform to the sides of the ditch to prevent water flow through barrier.
A Fill and compact gaps with loose straw.
B All dimensions are in millimetres unless otherwise shown.

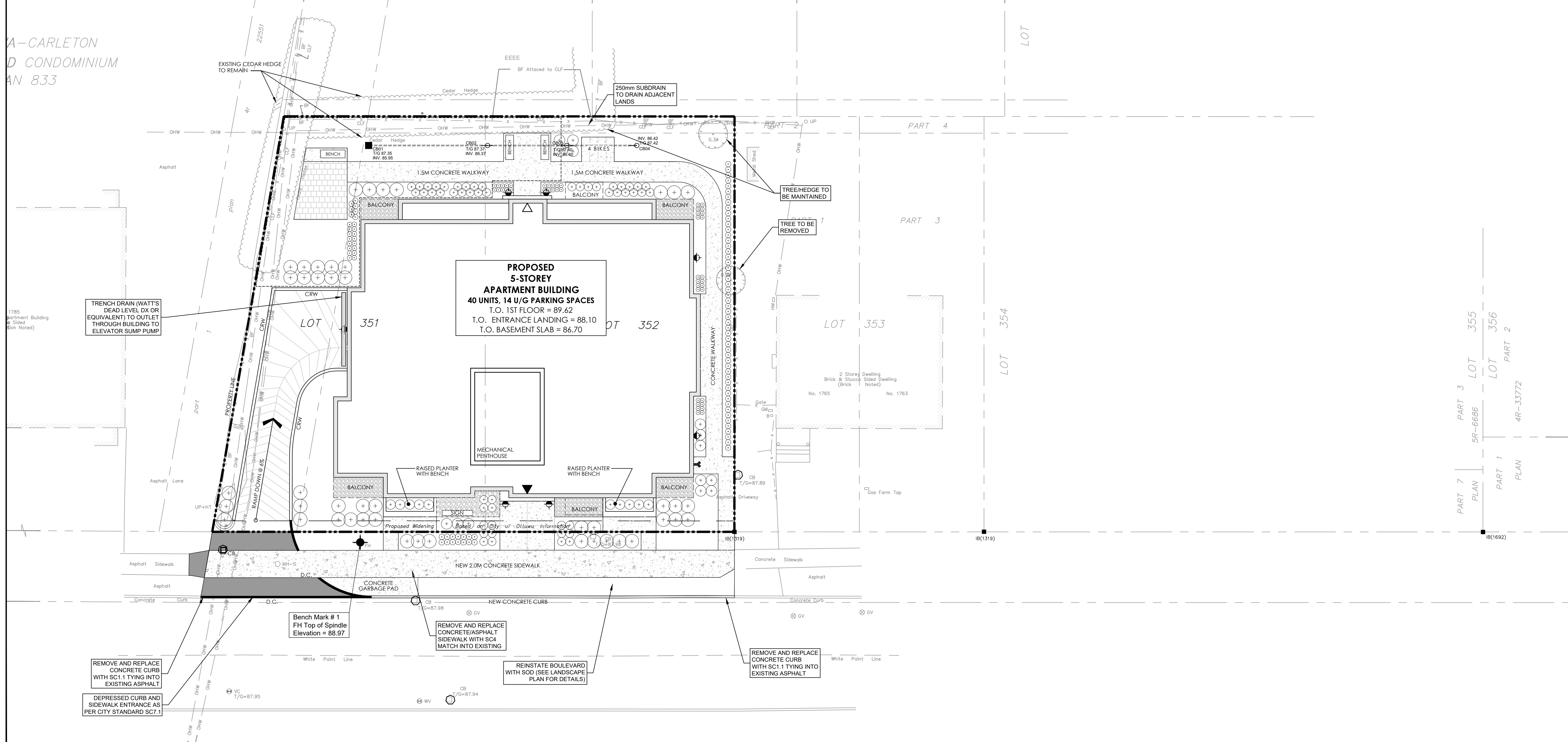
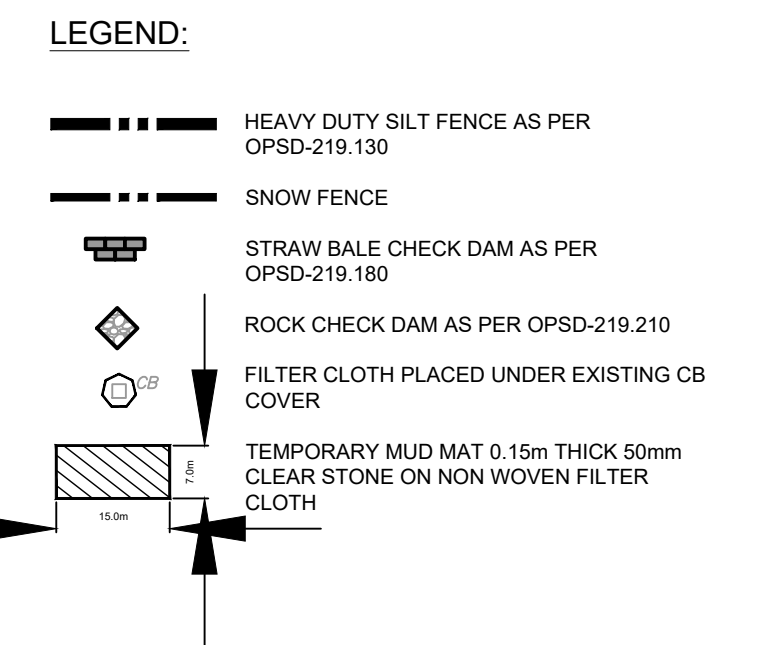
ONTARIO PROVINCIAL STANDARD DRAWING	Nov 2021	Rev 3
STRAW BALE FLOW CHECK DAM		
		OPSD 219.180



NOTE:
A All dimensions are in millimetres unless otherwise shown.

ONTARIO PROVINCIAL STANDARD DRAWING	Nov 2022	Rev 3
TEMPORARY ROCK FLOW CHECK DAM V-DITCH		
		OPSD 219.210

- NOTES:
- THE CONTRACTOR SHALL IMPLEMENT BEST MANAGEMENT PRACTICES, TO PROVIDE FOR PROTECTION OF THE AREA DRAINAGE SYSTEM AND THE RECEIVING WATERCOURSE, DURING CONSTRUCTION ACTIVITIES. THE CONTRACTOR ACKNOWLEDGES THAT FAILURE TO IMPLEMENT APPROPRIATE EROSION AND SEDIMENT CONTROL MEASURES MAY BE SUBJECT TO PENALTIES IMPOSED BY ANY APPLICABLE REGULATORY AGENCY.
 - SILT FENCE TO BE ERECTED PRIOR TO EARTH WORKS BEING COMMENCED. SILT FENCE TO BE MAINTAINED UNTIL VEGETATION IS ESTABLISHED OR UNTIL START OF SUBSEQUENT PHASE.
 - STRAW BALE SEDIMENT TRAPS TO BE CONSTRUCTED IN EXISTING ROAD SIDE DITCHES. TRAPS TO REMAIN AND BE MAINTAINED UNTIL VEGETATION IS ESTABLISHED.
 - FILTER CLOTH TO BE PLACED AND MAINTAINED UNDER COVER OF ALL PROPOSED CATCHBASINS AFTER BASE COURSE, AND EXISTING CATCHBASINS IDENTIFIED OUTSIDE OF CONSTRUCTION LIMIT. FILTER CLOTH IN STREET C/S TO REMAIN UNTIL ALL CURBS ARE CONSTRUCTED. FILTER CLOTH IN RVCB'S TO REMAIN UNTIL VEGETATION IS ESTABLISHED. ALL CATCHBASINS TO BE REGULARLY INSPECTED AND CLEANED AS NECESSARY, UNTIL SOD AND CURBS ARE CONSTRUCTED.
 - CONTRACTOR TO PROVIDE DETAILS ON LOCATION(S) AND DESIGN OF DEWATERING TRAP(S) PRIOR TO COMMENCING WORK. CONTRACTOR ALSO RESPONSIBLE FOR MAINTAINING TRAP(S) AND ADJUSTING SIZE(S) IF DEEMED REQUIRED BY THE ENGINEER DURING CONSTRUCTION.
 - WORKS NOTED ABOVE ARE TO BE INSTALLED, INSPECTED, MAINTAINED AND ULTIMATELY REMOVED BY SERVICING CONTRACTOR.
 - THIS IS A "LIVING DOCUMENT" AND MAY BE MODIFIED IN THE EVENT THE PROPOSED CONTROL MEASURES ARE INSUFFICIENT.



CLIENT

PHOENIX HOMES
18A Bentley Ave Ottawa, ON K2E 6T8

COPYRIGHT
This drawing has been prepared solely for the intended use, thus any reproduction or distribution for any purpose other than authorized by Arcadis is forbidden. Written dimensions shall have precedence over scaled dimensions. Contractors shall verify and be responsible for all dimensions and conditions on the job, and Arcadis shall be informed of any variations from the dimensions and conditions shown on the drawing. Shop drawings shall be submitted to Arcadis for general conformance before proceeding with fabrication.

Arcadis Professional Services (Canada) Inc.
Formerly B I Group Professional Services (Canada) Inc.

No.	DESCRIPTION	DATE
1	ISSUED FOR SPA	2025-12-18
2	REVISED AS PER NEW SITE PLAN	2026-02-20
3	REVISED AS PER CITY COMMENTS	2026-04-30

ISSUES

SEE 010, 011, 012 FOR NOTES, LEGEND, CB TABLE, STREET SECTIONS AND DETAILS

SCALE: 1:150

SEAL

LICENSÉ PROFESSIONNEL INGÉNIEUR
S. E. LABADIE
100214983
2026/04/30
PROVINCE OF ONTARIO

ARCADIS
333 Preston Street - Suite 500
Ottawa ON K1S 5N4 Canada
tel 613 225 1311
www.arcadis.com

PROJECT
1773 & 1767 BASELINE ROAD
OTTAWA, ONTARIO

PROJECT NO:
30297182

DRAWN BY:
D.P.S.

CHECKED BY:
D.G.Y.

PROJECT MGR:
D.G.Y.

APPROVED BY:
S.E.L.

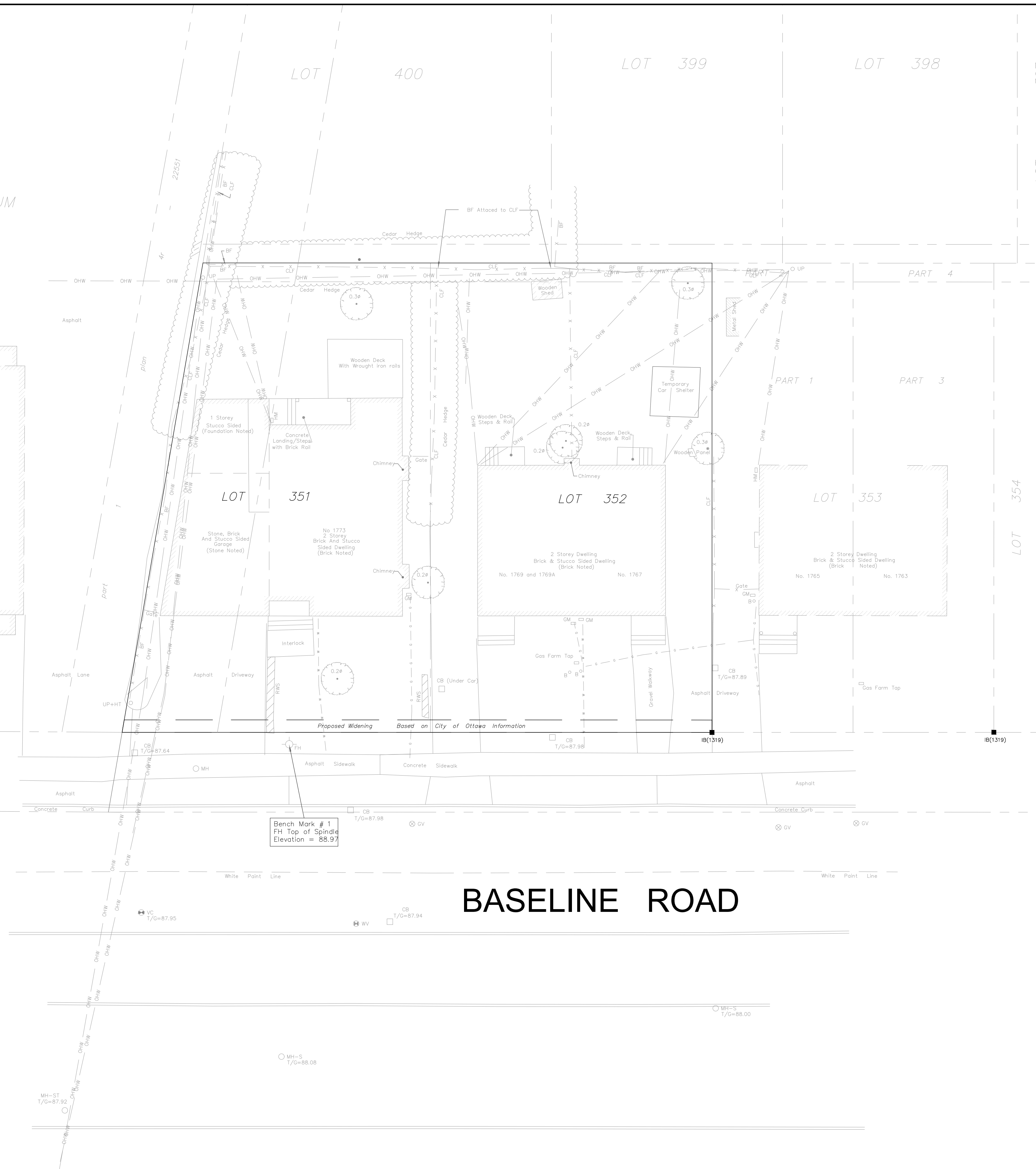
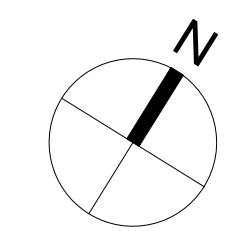
SHEET TITLE
SEDIMENT - EROSION PLAN

SHEET NUMBER
C-900

ISSUE
3

FILE No. D07-12-25-0169
PLAN No. 19442

OTTAWA-CARLETON
STANDARD CONDOMINIUM
PLAN 833



Bench Mark # 1
FH Top of Spindle
Elevation = 88.97

BASELINE ROAD

CLIENT

PHOENIX HOMES
18A Bentley Ave Ottawa, ON K2E 6T8

COPYRIGHT
This drawing has been prepared solely for the intended use, thus any reproduction or distribution for any purpose other than authorized by Arcadis is forbidden. Written dimensions shall have precedence over scaled dimensions. Contractors shall verify and be responsible for all dimensions and conditions on the job, and Arcadis shall be informed of any variations from the dimensions and conditions shown on the drawing. Shop drawings shall be submitted to Arcadis for general conformance before proceeding with fabrication.

Arcadis Professional Services (Canada) Inc.
Formerly B Group Professional Services (Canada) Inc.

ISSUES	No.	DESCRIPTION	DATE
	1	ISSUED FOR SPA	2025-12-18
	2	REVISED AS PER NEW SITE PLAN	2026-02-20
	3	REVISED AS PER CITY COMMENTS	2026-04-30

SEE 010, 011, 012 FOR NOTES, LEGEND, CB TABLE, STREET SECTIONS AND DETAILS

CONSULTANTS

PRIME CONSULTANT

ARCADIS
333 Preston Street - Suite 500
Ottawa ON K1S 5N4 Canada
tel 613 225 1311
www.arcadis.com

PROJECT
1773 & 1767 BASELINE ROAD
OTTAWA, ONTARIO

PROJECT NO:
30297182

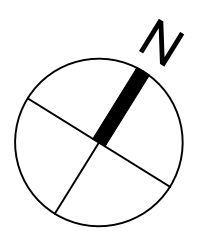
DRAWN BY: D.P.S.	CHECKED BY: D.G.Y.
PROJECT MGR: D.G.Y.	APPROVED BY: S.E.L.

SHEET TITLE
EXISTING CONDITIONS

SHEET NUMBER C-EXCON	ISSUE 3
--------------------------------	-------------------

SCALE CHECK
FILE No. 19442
FILE No. D07-12-25-0169

OTTAWA-CARLETON
STANDARD CONDOMINIUM
PLAN 833



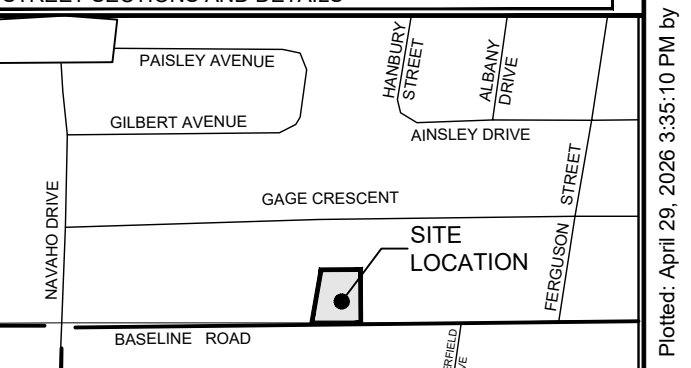
COPYRIGHT
This drawing has been prepared solely for the intended use, thus any reproduction or distribution for any purpose other than authorized by Arcadis is forbidden. Written dimensions shall have precedence over scaled dimensions. Contractors shall verify and be responsible for all dimensions and conditions on the job, and Arcadis shall be informed of any variations from the dimensions and conditions shown on the drawing. Shop drawings shall be submitted to Arcadis for general conformance before proceeding with fabrication.

Arcadis Professional Services (Canada) Inc.
Formerly B3 Group Professional Services (Canada) Inc.

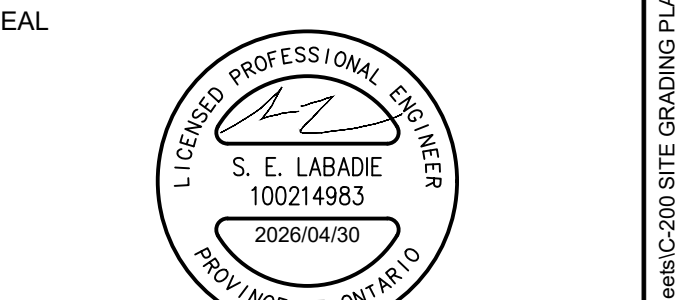
ISSUES

No.	DESCRIPTION	DATE
1	ISSUED FOR SPA	2025-12-18
2	REVISED AS PER NEW SITE PLAN	2026-02-20
3	REVISED AS PER CITY COMMENTS	2026-04-30

SEE 010, 011, 012 FOR NOTES, LEGEND, CB TABLE, STREET SECTIONS AND DETAILS



CONSULTANTS



PRIME CONSULTANT
ARCADIS
333 Preston Street - Suite 500
Ottawa ON K1S 5N4 Canada
tel 613 225 1311
www.arcadis.com

PROJECT
1773 & 1767 BASELINE ROAD
OTTAWA, ONTARIO

PROJECT NO: 30297182	
DRAWN BY: D.P.S.	CHECKED BY: D.G.Y.
PROJECT MGR: D.G.Y.	APPROVED BY: S.E.L.

SHEET TITLE
SITE GRADING PLAN

SHEET NUMBER C-200	ISSUE 3
------------------------------	-------------------

GRADING LEGEND

- PROPOSED DITCH C/W FLOW DIRECTION AND SLOPE
- SLOPE C/W FLOW DIRECTION
- MAJOR OVERLAND FLOW ROUTE
- PROPOSED SPOT GRADE
- PROPOSED SWALE GRADE
- PROPOSED SWALE HIGH POINT GRADE
- LOT CORNER GRADE C/W EXISTING GRADE
- FULL STATIC PONDING GRADE
- RETAINING WALL C/W TOP OF WALL AND GRASS GRADE
- TERRACING 3:1 MAXIMUM UNLESS NOTED OTHERWISE
- PRESSURE REDUCING VALVE
- FINISHED FLOOR ELEVATION
- TOP OF FOUNDATION ELEVATION
- UNDERSIDE OF FOOTING ELEVATION
- MINIMUM UNDERSIDE OF FOOTING (Based on the higher of the sewer overflows, or hydraulic grade line)
- MINIMUM GARAGE GRADE
- WALKUP UNIT
- WALKOUT UNIT
- NON-STANDARD FOUNDATION (First cover not provided for standard unit)
- HIGHBACK UNIT (1.5m frost cover on footings)
- NOISE BARRIER LOCATION
- NOISE BARRIER GATE
- RIP-RAP
- TOWN HOUSE SPLITS
- 2hr FIREWALL

Denotes

- Survey Monument Found
- Standard Iron Bar
- Short Standard Iron Bar
- Iron Bar
- Concrete Pin
- Witness
- Anns, O'Sullivan, Vollebek Ltd.
- Measured
- Proportioned
- Registered Plan 372115
- (AOG) Plan, November 15, 1990
- Plan 4R-22510
- Plan 4R-8091
- Maintenance Hole (Sanitary)
- Valve Chamber (Watermain)
- Underground Gas
- Underground Water
- Overhead Wires
- Utility Pole
- Catch Basin
- Fire Hydrant
- Water Valve
- Gas Valve
- Gas Meter
- Hydro Meter
- Boltard
- Chain Link Fence
- Board Fence
- Stone Retaining Wall
- Diameter
- Location of Elevations
- Top of Concrete Curb Elevation
- Top of Stone Retaining Wall Elevation
- Centreline
- Deciduous Tree

POND ID CB01

TOP OF GRATE (m)	87.35
STATIC ELEV (m)	87.60
STATIC DEPTH (m)	0.25
STATIC VOLUME (m³)	4.05

PROPOSED 5-STOREY APARTMENT BUILDING
40 UNITS, 14 U/G PARKING SPACES
T.O. 1ST FLOOR = 89.62
T.O. ENTRANCE LANDING = 88.10
T.O. BASEMENT SLAB = 86.70

CB01 ICD = 6 L/s
Rooftop Storage
Restricted Flowrate = 2 L/s
100-Yr Storage Volume = 20.77 m³
Total Area = 500m²
Usable Area for Storage = 375m²
Average Depth during 100-Yr = 0.055m

TRENCH DRAIN (WATT'S DEAD LEVEL DX OR EQUIVALENT) TO OUTLET THROUGH BUILDING TO ELEVATOR SUMP PUMP

Bench Mark # 1
FH Top of Spindle
Elevation = 88.97

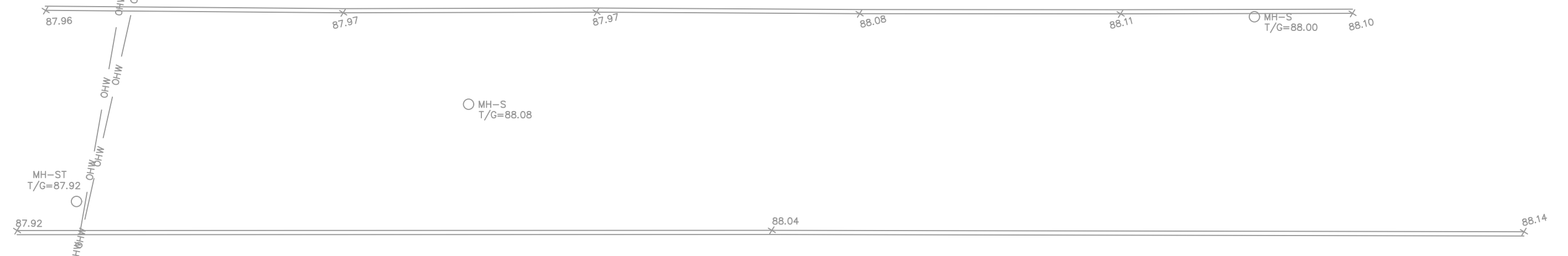
REMOVE AND REPLACE CONCRETE CURB WITH SC1.1 TYING INTO EXISTING ASPHALT

DEPRESSED CURB AND SIDEWALK ENTRANCE AS PER CITY STANDARD SC7.1

REINSTATE BOULEVARD WITH SOD (SEE LANDSCAPE PLAN FOR DETAILS)

REMOVE AND REPLACE CONCRETE CURB WITH SC1.1 TYING INTO EXISTING ASPHALT

REMOVE AND REPLACE CONCRETE/ASPHALT SIDEWALK WITH SC4 MATCH INTO EXISTING

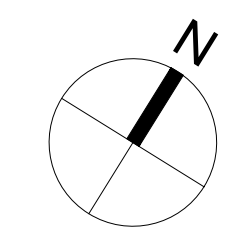


File Location: C:\Users\slumad319\Documents\Projects\10_WIP\04_CIVIL\Sheets\C200 SITE GRADING PLAN.dwg
 Last Saved: April 23, 2026, by slumad3190
 Printed: April 29, 2026 3:35:10 PM by Surma, Don
 SCALE CHECK
 PLAN No. 19442
 FILE No. D07-12-25-0169

OTTAWA-CARLETON
STANDARD CONDOMINIUM
PLAN 833



○	REMOVAL	▨	DRY GRIND EXISTING ASPHALT AVERAGE DEPTH 50mm
⊙	ADJUST MANHOLE VALVES	▨	FULL DEPTH ASPHALT REMOVAL
⊕	ADJUST CATCH BASIN	▨	AREA TO BE CLEARED AND GRUBBED
⊗	ADJUSTMENT BY BELL OR HYDRO APPROVED CONTRACTOR	▨	REMOVAL OF BUILDINGS, FOUNDATIONS, SEPTIC SYSTEM AND WELL
X	REMOVE OR ABANDON SEWER, WATERMAIN, UTILITY, CURB RETURNS	▨	REMOVALS OF CONCRETE/ ASPHALT SIDEWALK
⊖	PLUG		



CLIENT
PHOENIX HOMES
18A Bentley Ave Ottawa, ON K2E 6T8

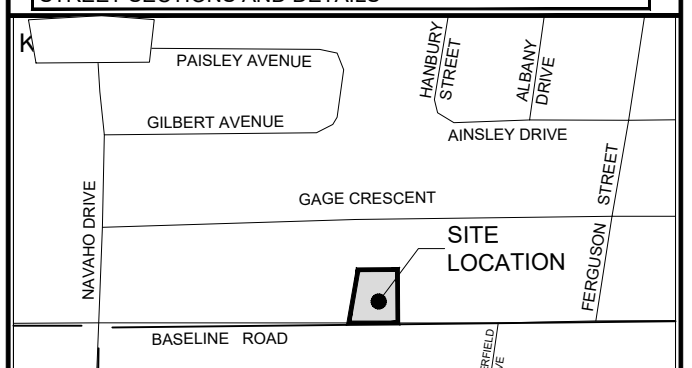
COPYRIGHT
This drawing has been prepared solely for the intended use, thus any reproduction or distribution for any purpose other than authorized by Arcadis is forbidden. Written dimensions shall have precedence over scaled dimensions. Contractors shall verify and be responsible for all dimensions and conditions on the job, and Arcadis shall be informed of any variations from the dimensions and conditions shown on the drawing. Shop drawings shall be submitted to Arcadis for general conformance before proceeding with fabrication.

Arcadis Professional Services (Canada) Inc.
Formerly B3 Group Professional Services (Canada) Inc.

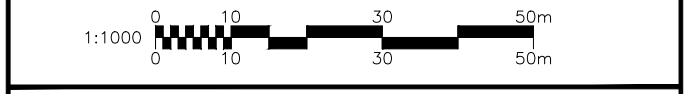
ISSUES

No.	DESCRIPTION	DATE
1	ISSUED FOR SPA	2025-12-18
2	REVISED AS PER NEW SITE PLAN	2026-02-20
3	REVISED AS PER CITY COMMENTS	2026-04-30

SEE 010, 011, 012 FOR NOTES, LEGEND, CB TABLE, STREET SECTIONS AND DETAILS



CONSULTANTS



SEAL

PRIME CONSULTANT
ARCADIS
333 Preston Street - Suite 500
Ottawa ON K1S 5N4 Canada
tel 613 225 1311
www.arcadis.com

PROJECT
1773 & 1767 BASELINE ROAD
OTTAWA, ONTARIO

PROJECT NO:
30297182
DRAWN BY:
D.P.S.
PROJECT MGR:
D.G.Y.

CHECKED BY:
D.G.Y.
APPROVED BY:
S.E.L.

SHEET TITLE
REMOVALS DRAWING

SHEET NUMBER
C-REM

ISSUE
3

BASELINE ROAD

File Location: C:\Users\slumad3159\Documents\Projects\10_WIP\04_CIVIL\Sheets\C-REM REMOVALS.dwg | Last Saved: April 29, 2026, by slumad3159 | Plotter: April 29, 2026 3:55:40 PM by Slumad3159
 SCALE CHECK
 PLAN No. 19442
 FILE No. D07-12-25-0169