

**M. David Blakely
Architect Inc.**

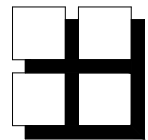
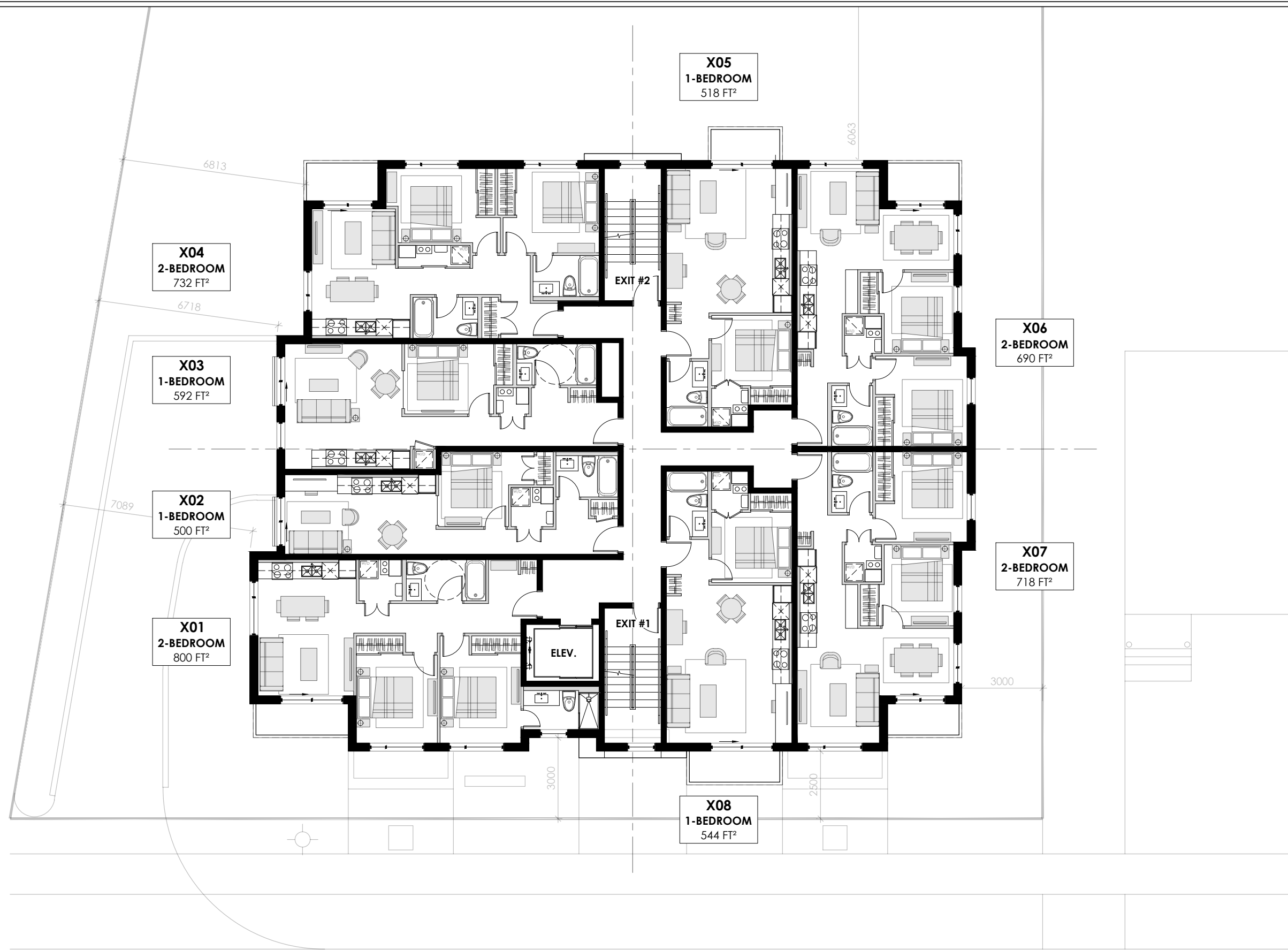
2200 Prince of Wales Dr. Suite 101 Ottawa On. Canada
Phone (613) 226-8811 Fax (613) 226-7942 k2E 6Z9

A1.1

BASEMENT LEVEL | 5,815 FT²

**1773 & 1767
BASELINE ROAD**

OTTAWA, ONTARIO
Rev. 01 | NOVEMBER 26, 2025
SCALE: 1:150



**M. David Blakely
Architect Inc.**

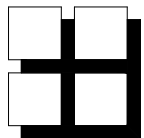
2200 Prince of Wales Dr. Suite 101 Ottawa On. Canada
Phone (613) 226-8811 Fax (613) 226-7942 k2E 6Z9

A1.2

TYPICAL FLOORS 1-3 | 5,815 FT²

**1773 & 1767
BASELINE ROAD**

OTTAWA, ONTARIO
Rev. 01 | NOVEMBER 26, 2025
SCALE: 1:150



**M. David Blakely
Architect Inc.**

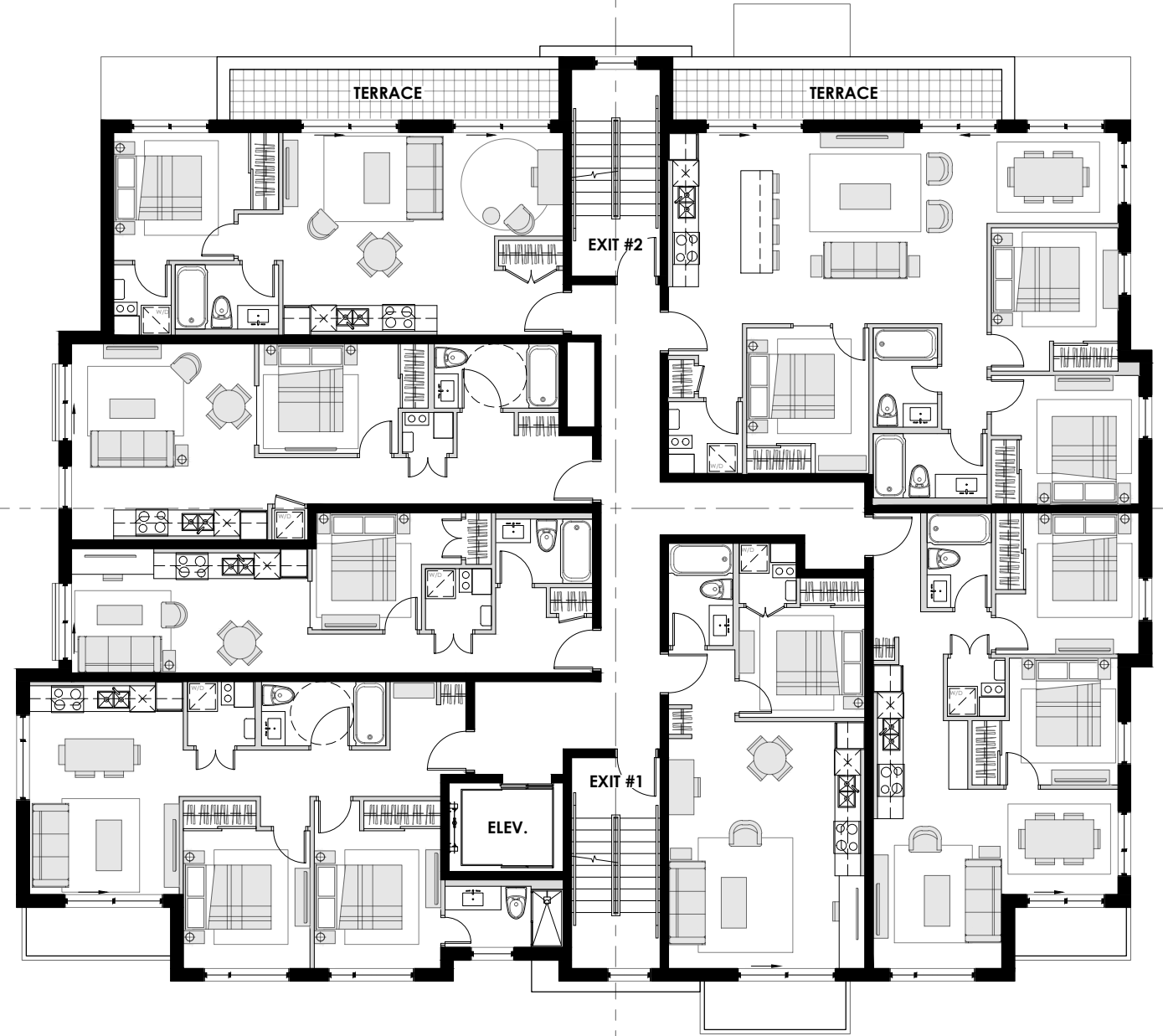
2200 Prince of Wales Dr. Suite 101 Ottawa On. Canada
Phone (613) 226-8811 Fax (613) 226-7942 k2E 6Z9

A1.3

FLOORS 4&5 | 5,553 FT²

**1773 & 1767
BASELINE ROAD**

OTTAWA, ONTARIO
Rev. 01 | NOVEMBER 26, 2025
SCALE: 1:150



404
1-BEDROOM +
620 FT²

X03
1-BEDROOM
592 FT²

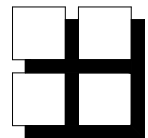
X02
1-BEDROOM
500 FT²

X01
2-BEDROOM
800 FT²

X08
1-BEDROOM
544 FT²

406
3-BEDROOM
1,088 FT²

X07
2-BEDROOM
718 FT²



M. David Blakely
Architect Inc.

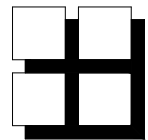
2200 Prince of Wales Dr. Suite 101 Ottawa On. Canada
Phone (613) 226-8811 Fax (613) 226-7942 k2E 6Z9

A1.3b

3-BEDROOM OPTION | FLOORS 4&5 | 5,553 FT²

1773 & 1767
BASELINE ROAD

OTTAWA, ONTARIO
Rev. 01 | NOVEMBER 26, 2025
SCALE: 1:150



**M. David Blakely
Architect Inc.**

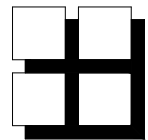
2200 Prince of Wales Dr. Suite 101 Ottawa On. Canada
Phone (613) 226-8811 Fax (613) 226-7942 k2E 6Z9

PERSPECTIVE 1 | LOOKING NORTH WEST

A3.1

**1773 & 1767
BASELINE ROAD**

OTTAWA, ONTARIO
Rev. 01 | NOVEMBER 26, 2025
SCALE: 1:150



**M. David Blakely
Architect Inc.**

2200 Prince of Wales Dr. Suite 101 Ottawa On. Canada
Phone (613) 226-8811 Fax (613) 226-7942 k2E 6Z9

A3.2 | **1773 & 1767
BASELINE ROAD**
PERSPECTIVE 2 | LOOKING NORTH EAST

**1773 & 1767
BASELINE ROAD**
OTTAWA, ONTARIO
Rev. 01 | NOVEMBER 26, 2025
SCALE: 1:150