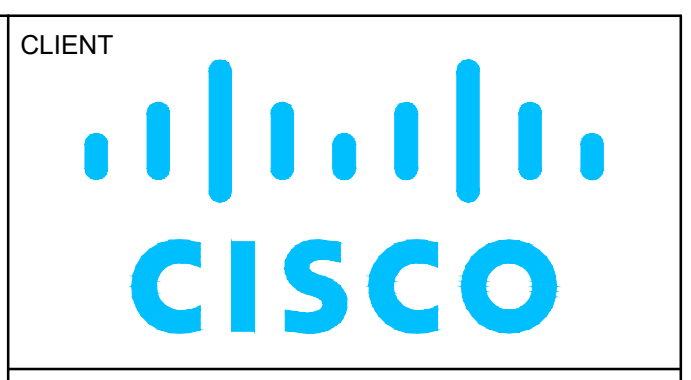
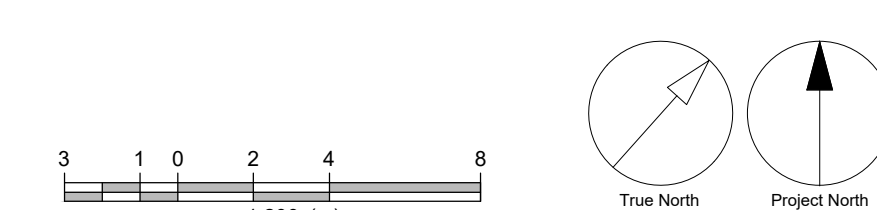


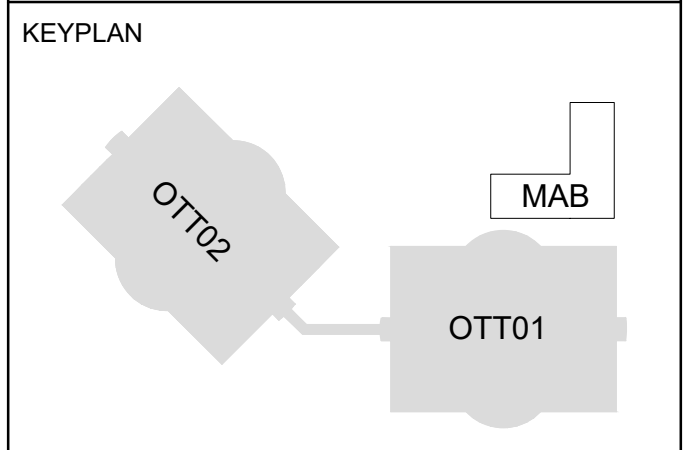
2 TREE PROTECTION BARRIER DETAIL  
L-001 1:200

1 TREE REMOVALS AND PROTECTION PLAN  
L-001 1:200

NOTE: THIS DRAWING IS INTENDED TO BE READ ALONGSIDE ARBORIST REPORT. REFER TO ARBORIST REPORT FOR DETAILED TREE INVENTORY DATA.



CLIENT  
COPYRIGHT  
This drawing has been prepared solely for the intended use, thus any reproduction or distribution for any purpose other than authorized by Arcadis is forbidden. Written dimensions shall have precedence over scaled dimensions. Contractors shall verify and be responsible for all dimensions and conditions on the job, and Arcadis shall be informed of any variations from the dimensions and conditions shown on the drawing. Shop drawings shall be submitted to Arcadis for general conformance before proceeding with fabrication.  
Arcadis Architects (Canada) Inc.



ISSUES

No.	DESCRIPTION	DATE
1	ISSUED FOR SPC #1	2025-12-12
2	ISSUED FOR SPC #2	2026-05-08
3	ISSUED FOR DD & PERMIT #1	2026-07-07

ACCESSIBLE FORMATS AND COMMUNICATION SUPPORTS ARE AVAILABLE, UPON REQUEST

SCALE	NTS
DATE	MARCH 2021
DRAWING NO.	1 of 1

- CONSULTANTS
- ARUP**  
47 Clarence Street, Suite 202,  
Ottawa, ON, K1N 5P9
  - TEECOM**  
1000-1000  
1000-1000  
1000-1000
  - SENEZ CO**  
FIRE SCIENCE & ENGINEERING  
93 Skyway Avenue, Suite 102  
Toronto, ON, M9W 6N6
  - TOTAL OPENING CONSULTANTS**  
895 Don Mills Rd., Suite 900,  
Toronto, ON M3C 1W3
  - CBRE**  
340 Albert Street, Suite 1900  
Ottawa, ON, K1R 7Y6
  - Matrix**  
6131 Peach Street  
Richmond, ON, K0A 2Z0



SPC PACKAGE  
NOT FOR CONSTRUCTION

PRIME CONSULTANT  
**ARCADIS**  
333 Preston Street - Suite 500  
Ottawa ON K1S 5N4 Canada  
tel 613 225 1311  
www.arcadis.com

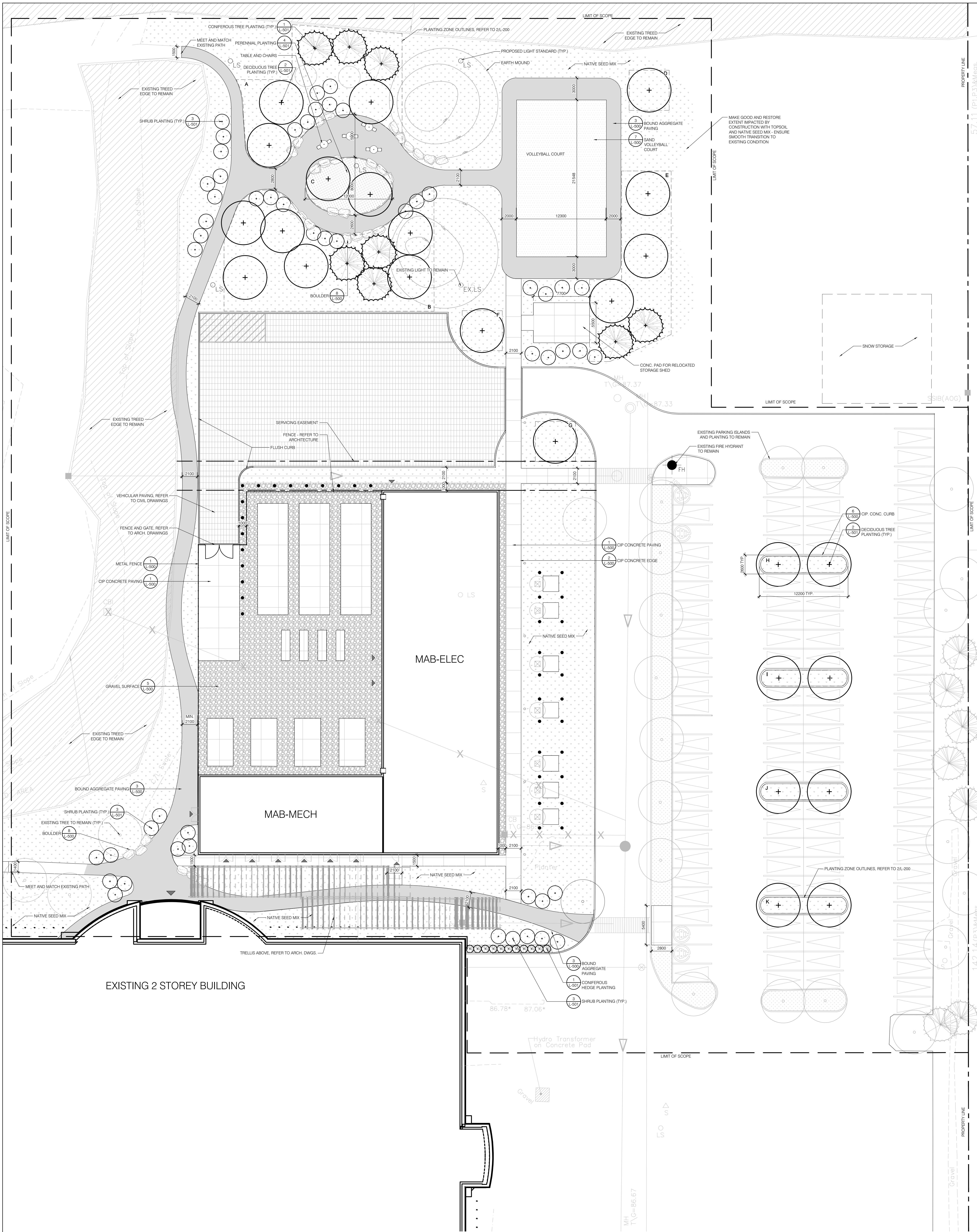
PROJECT  
CISCO OTTAWA CAMPUS  
MAB  
2000 Innovation Drive,  
Kanata, ON K2K 3E8

PROJECT NO:	APPLICATION NO:
MAB-30298433	PC2025-0127
DRAWN BY: ARCADIS	CHECKED BY: BJ
PROJECT MGR: BJ	APPROVED BY: NK

SHEET TITLE  
TREE PROTECTION  
AND REMOVALS PLAN

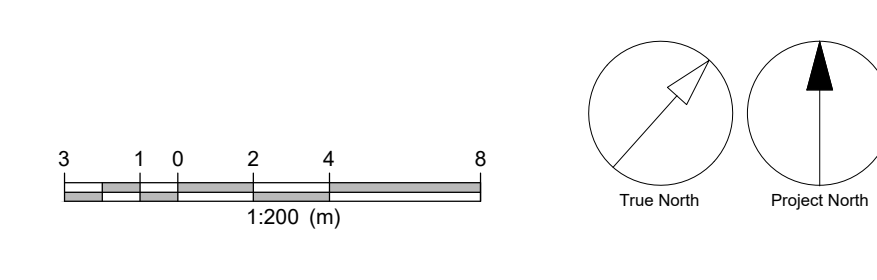
SHEET NUMBER  
L-001

ISSUE  
2

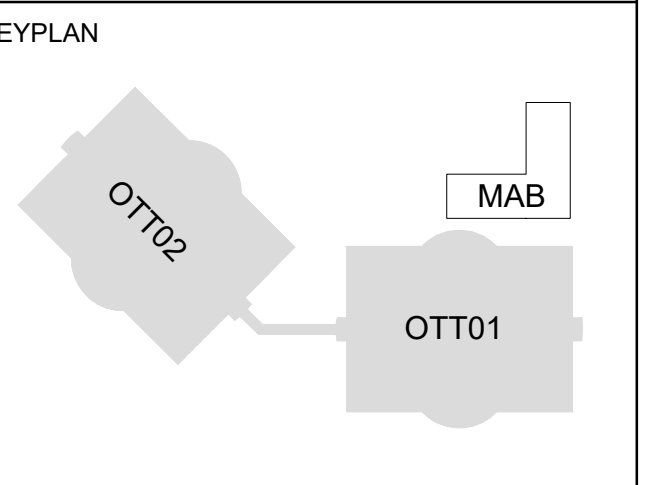


1 L-100 LAYOUT AND MATERIALS PLAN  
1:200

- LEGEND**
- EXISTING TREES TO REMAIN
  - PROPOSED DECIDUOUS TREE
  - PROPOSED CONIFEROUS TREE
  - PROPOSED SPECIMEN SHRUB
  - NATIVE SEED MIX
  - PERENNIAL PLANTING
  - EXISTING SOD TO REMAIN
  - BOUND AGGREGATE PAVING
  - C.I.P. CONCRETE PAVING
  - GRAVEL
  - LOOSE SAND
  - TABLE AND CHAIRS
  - PROPOSED LIGHT STANDARD
  - EXISTING LIGHT STANDARD
  - ARMOURSTONE BOULDERS



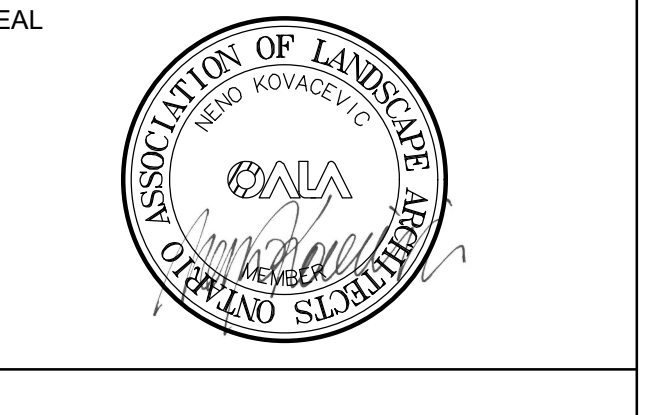
**COPYRIGHT**  
This drawing has been prepared solely for the intended use, thus any reproduction or distribution for any purpose other than authorized by Arcadis is forbidden. Written dimensions shall have precedence over scaled dimensions. Contractors shall verify and be responsible for all dimensions and conditions on the job, and Arcadis shall be informed of any variations from the dimensions and conditions shown on the drawing. Shop drawings shall be submitted to Arcadis for general conformance before proceeding with fabrication.  
**Arcadis Architects (Canada) Inc.**



**ISSUES**

No.	DESCRIPTION	DATE
1	ISSUED FOR SPC #1	2025-12-12
2	ISSUED FOR SPC #2	2026-05-08
3	ISSUED FOR DD & PERMIT #1	2026-07-07

- CONSULTANTS**
- ARUP**  
47 Clarence Street, Suite 202,  
Ottawa, ON, K1N 5P9
  - TEECOM**  
© California State  
San Francisco, CA  
94102-0720
  - SENEZ CO**  
FIRE SCIENCE & ENGINEERING  
93 Skyway Avenue, Suite 102  
Toronto, ON, M9W 6N6
  - TOTAL OPENING CONSULTANTS**  
895 Don Mills Rd., Suite 900,  
Toronto, ON M3C 1W3
  - CBRE**  
340 Albert Street, Suite 1900  
Ottawa, ON, K1R 7Y6
  - Matrix**  
6131 Perth Street  
Richmond, ON, K0A 2Z0



**SPC PACKAGE**  
NOT FOR CONSTRUCTION

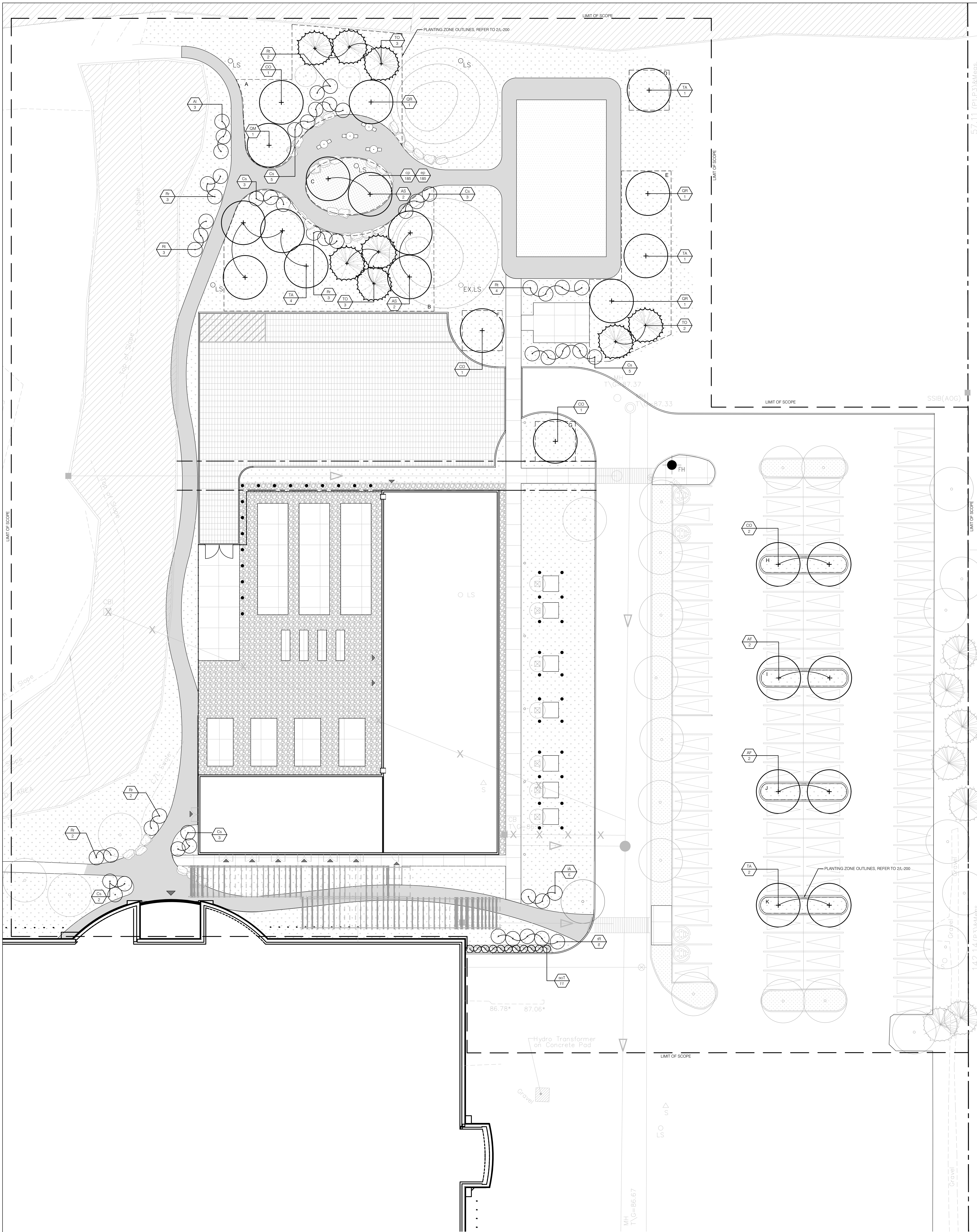
**PRIME CONSULTANT**  
**ARCADIS**  
333 Preston Street - Suite 500  
Ottawa ON K1S 5N4 Canada  
tel 613 225 1311  
www.arcadis.com

**PROJECT**  
**CISCO OTTAWA CAMPUS MAB**  
2000 Innovation Drive,  
Kanata, ON K2K 3E8

PROJECT NO: MAB.30298433	APPLICATION NO: PC2025-0127
DRAWN BY: ARCADIS	CHECKED BY: BJ
PROJECT MGR: BJ	APPROVED BY: NK

**SHEET TITLE**  
**LANDSCAPE LAYOUT AND MATERIALS PLAN**

**SHEET NUMBER** L-100 **ISSUE** 2



1 PLANTING PLAN  
L-200 1:200

**NATIVE PERENNIAL WILDFLOWER BLEND**

8105 - NATIVE PERENNIAL WILDFLOWER BLEND BY OSC SEEDS OR APPROVED EQUAL

- 12% BLACK EYED SUSAN (RUDBECKIA HIRTA)
- 5% BLANKET FLOWER (GAILLARDIA ARISTATA)
- 20% BLUE FLAX (LINUM PERENNE)
- 3% BUTTERFLY WEED (ASCLEPIAS TUBEROSA)
- 1% CANADA GOLDENROD (SOLIDAGO CANADENSIS)
- 5% EVENING PRIMROSE (OENOTHERA BIENNIS)
- 10% LANCE LEAF COREOPSIS (COREOPSIS LANCEOLATA)
- 5% OX EYE SUNFLOWER (HELIANTHUS HELIANTHOIDES)
- 15% PARTIDGE PEA (CHASMANTHUM LATIFOLIUM)
- 1% PRAIRIE BLAZING STAR (LIATRIS PSYCNOSTACHYA)
- 7% PURPLE CONEFLOWER (ECHINACEA PURPUREA)
- 5% SHASA DASY (CHRYSANTHEMUM MAXIMUM LUCANTHEMUM)
- 2% TALL WHITE BEAR TONGUE (PENSTEMON DIGITALIS)
- 3% WILD BERGAMOT (MONARDA FISTULOSA)
- 5% WILD LUPINUS (LUPINE PERENNIS)

SOW AT 25KG/HA (23 LBS/ACRE) OR 500G/180 SQ.M. FOR SMALLER AREAS

TOTAL AREA SHOWN = 3647 m<sup>2</sup>

**PLANT LIST**

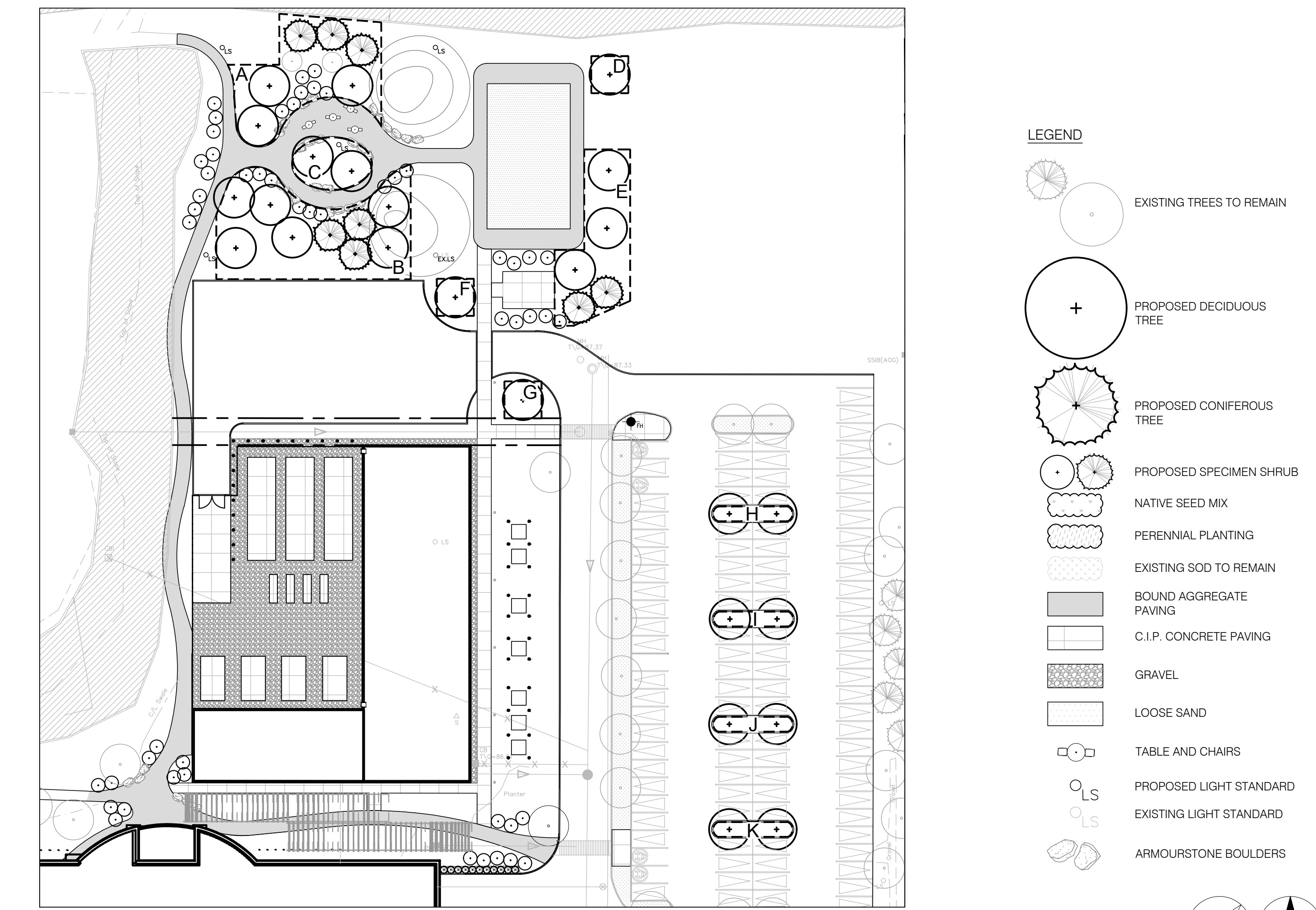
KEY	QTY	BOTANICAL NAME	COMMON NAME	SPACING	SPECIFICATION/ NOTES	NATIVE	DROUGHT TOLERANT
<b>Deciduous Trees</b>							
AF	4	<i>Acer x Freemanii</i>	Freeman Maple	As per plan	70mm WB	X	
AS	4	<i>Acer saccharum</i>	Sugar Maple	As per plan	70mm WB	X	
CO	4	<i>Celtis occidentalis</i>	Common Hackberry	As per plan	70mm WB	X	
TA	7	<i>Tilia americana</i>	Basswood	As per plan	70mm WB	X	
QM	2	<i>Quercus Macrocarpa</i>	Burr Oak	As per plan	70mm WB	X	
QR	3	<i>Quercus Rubra</i>	Red Oak	As per plan	70mm WB	X	
<b>Coniferous Trees</b>							
TO	8	<i>Thuja occidentalis</i>	Eastern White Cedar	As per plan	70mm WB	X	X
<b>Specimen Shrubs</b>							
Al	6	<i>Amelanchier Laevis</i>	Serviceberry	As per plan	80cm 5 gal	X	
Cs	20	<i>Cornus sericea</i>	Red Osier Dogwood	As per plan	80cm 5 gal	X	
Rr	15	<i>Rosa rugosa</i>	Rugosa rose	1000mm O.C	80cm 5 gal		X
Rt	9	<i>Rhus typhina 'Tiger Eyes'</i>	Tiger Eye Cutleaf Sumac	As per plan	80cm 5 gal	X	X
Toe	11	<i>Thuja occidentalis 'Emerald'</i>	Emerald Cedar	1000mm O.C	80cm 5 gal		
<b>Perennials</b>							
cp	185	<i>Carex pensylvanica</i>	Pennsylvania Sedge	450mm O.C	3 gal	X	X
ep	185	<i>Echinacea purpurea</i>	Purple Coneflower	450mm O.C	3 gal	X	X

NOTE: WITH OAK WLT SPREADING INTO ONTARIO, IT IS STRONGLY RECOMMENDED TO PLANT OAK TREES A MINIMUM OF 15m APART TO REDUCE THE RISK OF SPREAD THROUGH ROOT GRAFTING. CONTRACTOR TO FOLLOW PLANTING LAYOUT AS SHOWN AND ENSURE AT LEAST 15m BETWEEN OAK TREES.

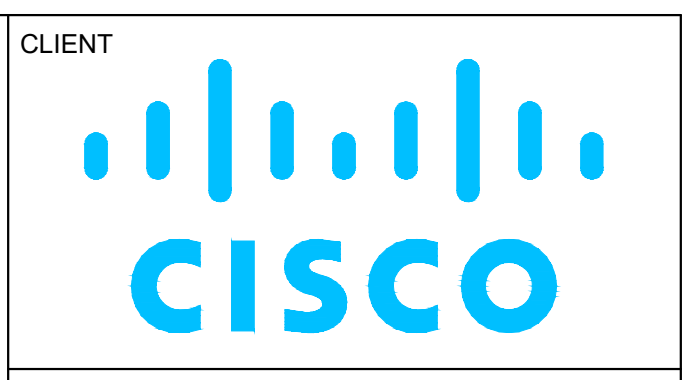
**SOIL VOLUME MATRIX (REFER TO SOIL VOLUME PLAN)**

PLANTING ZONES	VOLUME CALCULATION AT 1.5m SOIL DEPTH	TREE QUANTITY	OTTAWA TARGET SOIL VOLUME (m <sup>3</sup> )	DESIGN SOIL VOLUME (m <sup>3</sup> )	ADEQUACY PERCENTAGE
A	274m <sup>2</sup> x 1.5m = 411m <sup>3</sup>	8	144	411	285%
B	385m <sup>2</sup> x 1.5m = 577.5m <sup>3</sup>	9	162	577	356%
C	72m <sup>2</sup> x 1.5m = 108m <sup>3</sup>	2	36	108	300%
D	30m <sup>2</sup> x 1.5m = 45m <sup>3</sup>	1	30	45	150%
E	182m <sup>2</sup> x 1.5m = 273m <sup>3</sup>	5	90	273	303%
F	30m <sup>2</sup> x 1.5m = 45m <sup>3</sup>	1	30	45	150%
G	30m <sup>2</sup> x 1.5m = 45m <sup>3</sup>	1	30	45	150%
H	25m <sup>2</sup> x 1.5m = 37.5m <sup>3</sup>	2	36	37.5	104%
I	25m <sup>2</sup> x 1.5m = 37.5m <sup>3</sup>	2	36	37.5	104%
J	25m <sup>2</sup> x 1.5m = 37.5m <sup>3</sup>	2	36	37.5	104%
K	25m <sup>2</sup> x 1.5m = 37.5m <sup>3</sup>	2	36	37.5	104%

- TREE PLANTING IN SENSITIVE CLAY**
- The landscape plans have been developed in accordance with the geotechnical report: Geotechnical Investigation, Proposed MAB Building, Cisco Campus, Ottawa, Ontario. Prepared by WSP Canada Inc., April 8, 2026.
  - The following City of Ottawa clay soils guideline applies: Guidelines for Tree Planting in Sensitive Marine Clay Soils (2017).
  - The soil volumes provided are sufficient for a reasonable chance of tree survival. All new trees meet the minimum soil volume requirements of the following, based on a depth of 1.5m below finished grade.
    - Where one tree is planted: minimum of 30m<sup>3</sup> of soil provided.
    - Where multiple trees share a continuous soil volume: minimum of 18m<sup>3</sup> of soil provided per tree.

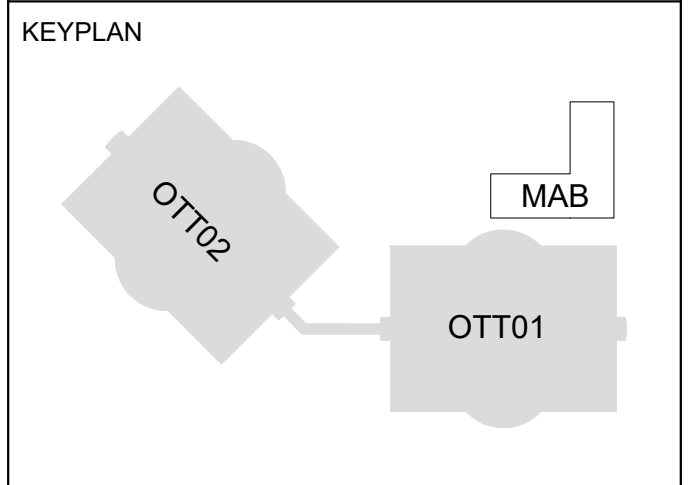


2 SOIL VOLUME PLAN  
L-200 1:500



**COPYRIGHT**  
This drawing has been prepared solely for the intended use, thus any reproduction or distribution for any purpose other than authorized by Arcadis is forbidden. Written dimensions shall have precedence over scaled dimensions. Contractors shall verify and be responsible for all dimensions and conditions on the job, and Arcadis shall be informed of any variations from the dimensions and conditions shown on the drawing. Shop drawings shall be submitted to Arcadis for general conformance before proceeding with fabrication.

Arcadis Architects (Canada) Inc.



**ISSUES**

No.	DESCRIPTION	DATE
1	ISSUED FOR SPC #1	2025-12-12
2	ISSUED FOR SPC #2	2026-05-08
3	ISSUED FOR DD & PERMIT #1	2026-07-07



**SPC PACKAGE NOT FOR CONSTRUCTION**



**PROJECT**  
CISCO OTTAWA CAMPUS MAB  
2000 Innovation Drive, Kanata, ON K2K 3E8

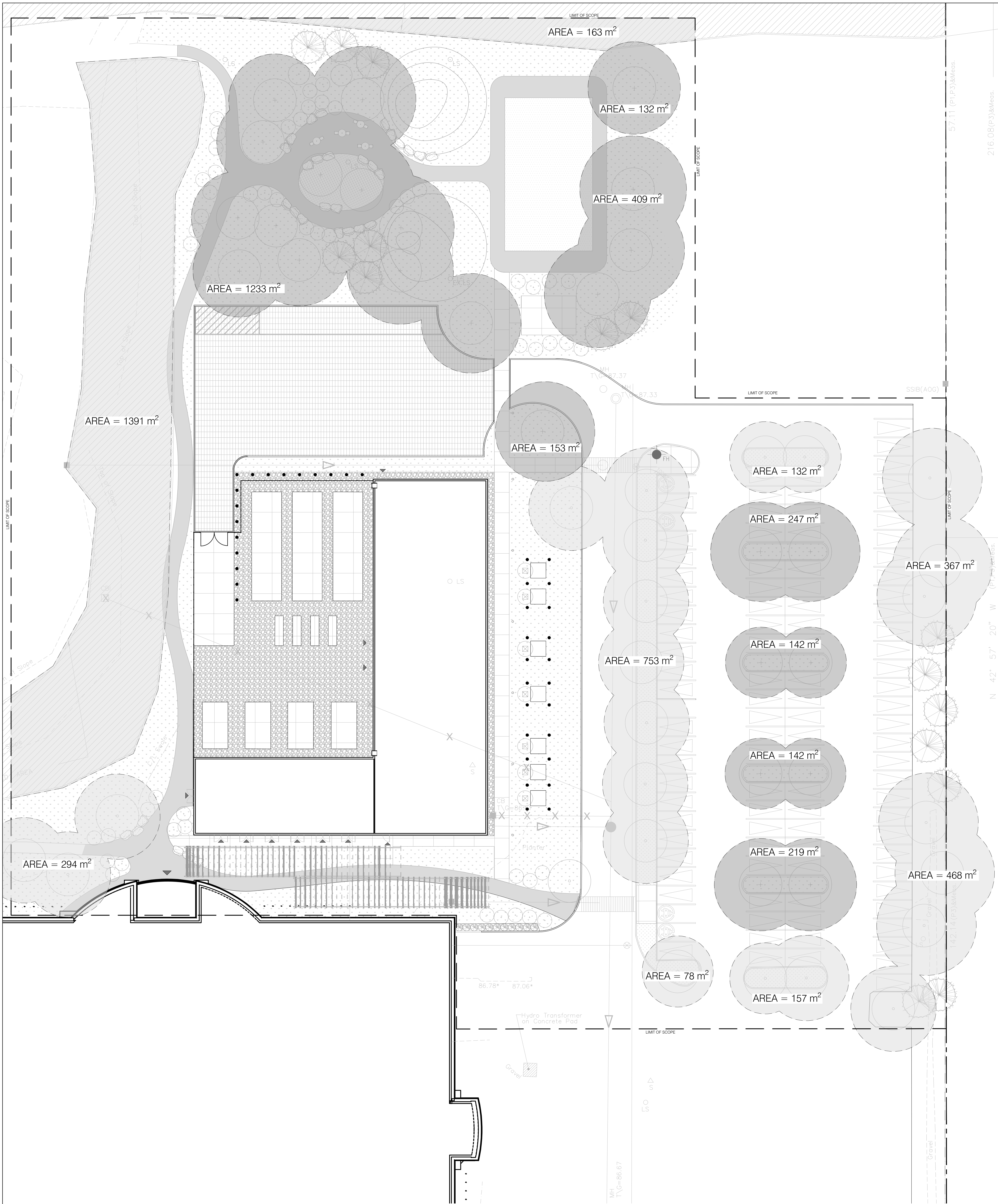
**PROJECT NO:** MAB-30298433  
**APPLICATION NO:** PC2025-0127

**DRAWN BY:** ARCADIS  
**CHECKED BY:** BJ

**PROJECT MGR:** BJ  
**APPROVED BY:** NK

**SHEET TITLE**  
PLANTING PLAN

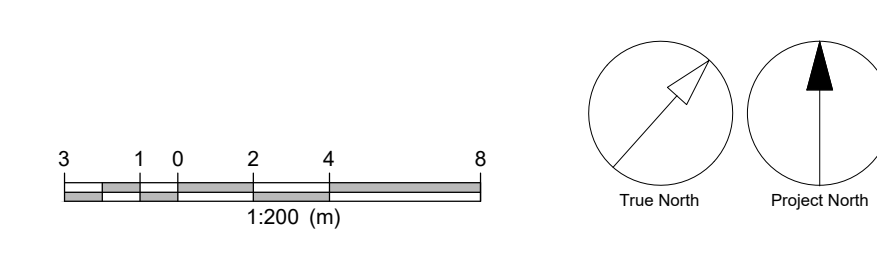
**SHEET NUMBER** L-200 **ISSUE** 2



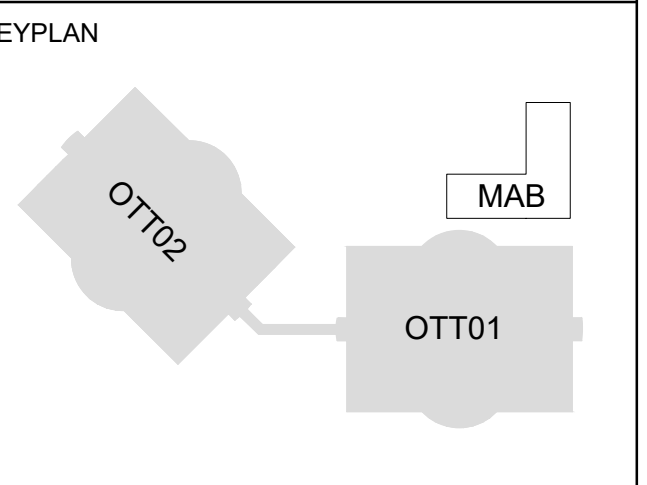
**40-YEAR CANOPY PROJECTION:**  
 PROPOSED CANOPY COVER AT MATURITY = 2,620 m<sup>2</sup>  
 EXISTING CANOPY COVER (PROJECTED AT MATURITY) = 3,916 m<sup>2</sup>  
 TOTAL PROJECTED CANOPY AREA = 6,536 m<sup>2</sup>  
 TOTAL SCOPE AREA = 15,776 m<sup>2</sup>  
 PROJECTED CANOPY COVER = 41.4%

- 40-YEAR CANOPY CALCULATION METHODOLOGY:**
- TREE SPECIES DIAMETER AT MATURITY WAS SOURCED FROM NVKNURSERIES.COM
  - CIRCLES WERE PLACED AROUND EACH CANOPY TREE WITH CORRESPONDING DIAMETER
  - CANOPY AREA WAS DETERMINED BY A POLYLINE DRAWN AROUND THE PERIMETER OF EACH TREE, OR GROUPINGS OF TREES WITH OVERLAPPING CANOPIES.
  - THE ADDED AREA OF ALL POLYLINES WAS USED TO CALCULATE SITE COVERAGE PERCENTAGE.
  - FOR THE PURPOSE OF THIS CALCULATION, THE TOTAL SITE AREA USED IS DENOTED BY THE 'LIMIT OF SCOPE' LINE.

- LEGEND**
- EXISTING TREES TO REMAIN
  - PROPOSED DECIDUOUS TREE
  - PROPOSED CONIFEROUS TREE
  - PROPOSED SPECIMEN SHRUB
  - NATIVE SEED MIX
  - PERENNIAL PLANTING
  - EXISTING SOD TO REMAIN
  - SOUND AGGREGATE PAVING
  - C.I.P. CONCRETE PAVING
  - GRAVEL
  - LOOSE SAND
  - TABLE AND CHAIRS
  - PROPOSED LIGHT STANDARD
  - EXISTING LIGHT STANDARD
  - ARMOURSTONE BOULDERS
  - EXISTING CANOPY 40-YEAR PROJECTION
  - PROPOSED CANOPY 40-YEAR PROJECTION



**COPYRIGHT**  
 This drawing has been prepared solely for the intended use, thus any reproduction or distribution for any purpose other than authorized by Arcadis is forbidden. Written dimensions shall have precedence over scaled dimensions. Contractors shall verify and be responsible for all dimensions and conditions on the job, and Arcadis shall be informed of any variations from the dimensions and conditions shown on the drawing. Shop drawings shall be submitted to Arcadis for general conformance before proceeding with fabrication.  
 Arcadis Architects (Canada) Inc.



**ISSUES**

No.	DESCRIPTION	DATE
1	ISSUED FOR SPC #1	2025-12-12
2	ISSUED FOR SPC #2	2025-05-08
3	ISSUED FOR DD & PERMIT #1	2025-07-07

**CONSULTANTS**

**ARUP**  
 47 Clarence Street, Suite 202,  
 Ottawa, ON, K1N 5P9

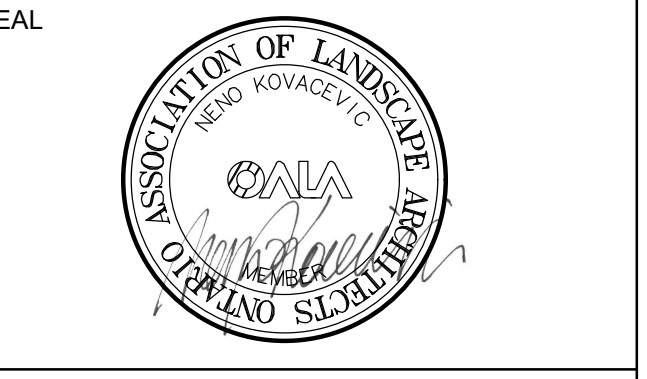
**TEECOM**  
 4770 Steeles Ave. E., Suite 100,  
 Scarborough, ON, M1V 5P6

**SENEZ CO**  
 FIRE SCIENCE & ENGINEERING  
 93 Skyway Avenue, Suite 102  
 Toronto, ON, M9W 6N6

**TOTAL OPENING CONSULTANTS**  
 895 Don Mills Rd., Suite 900,  
 Toronto, ON M3C 1W3

**CBRE**  
 340 Albert Street, Suite 1900  
 Ottawa, ON, K1R 7Y6

**Matrix**  
 8131 Perth Street  
 Richmond, ON, K0A 2Z0



**SPC PACKAGE**  
 NOT FOR CONSTRUCTION

**PRIME CONSULTANT**

**ARCADIS**  
 333 Preston Street - Suite 500  
 Ottawa ON K1S 5N4 Canada  
 tel 613 225 1311  
 www.arcadis.com

**PROJECT**  
 CISCO OTTAWA CAMPUS  
 MAB  
 2000 Innovation Drive,  
 Kanata, ON K2K 3E8

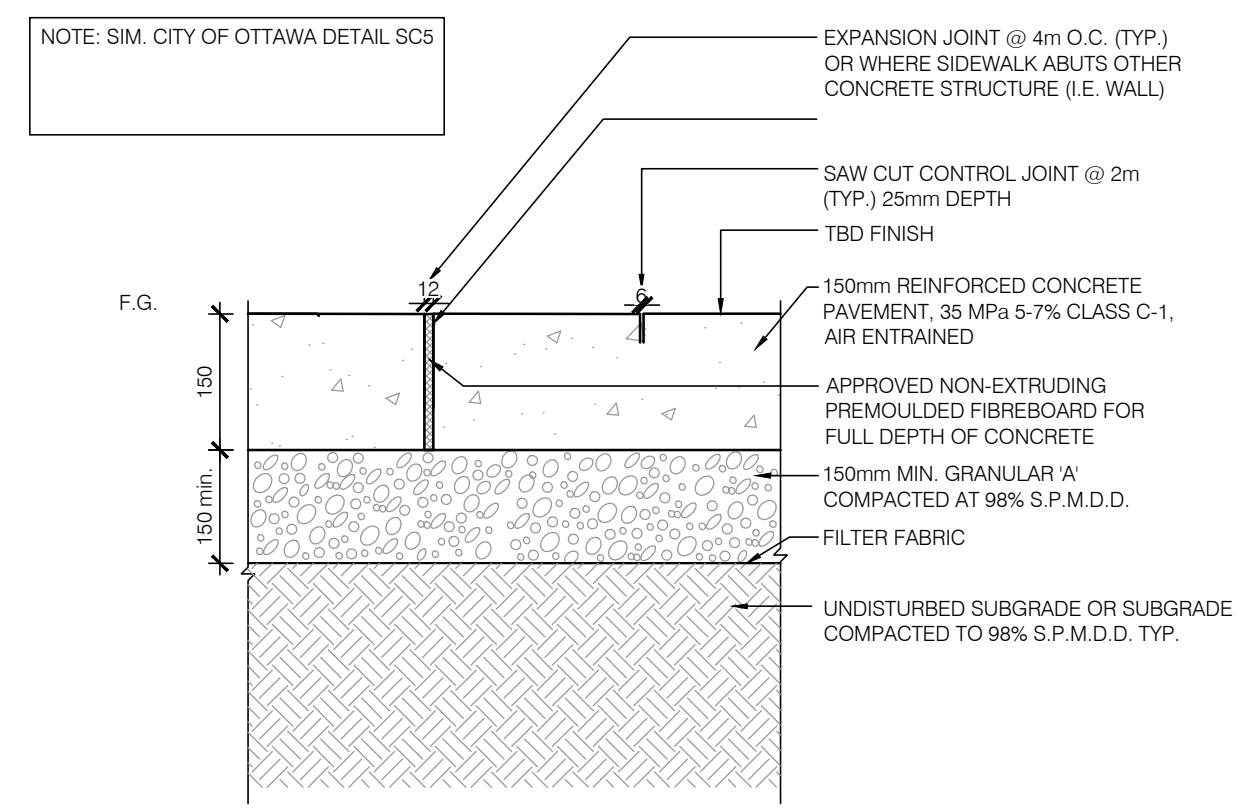
**PROJECT NO:** MAB.30298433  
**APPLICATION NO:** PC2025-0127

**DRAWN BY:** ARCADIS  
**CHECKED BY:** BJ

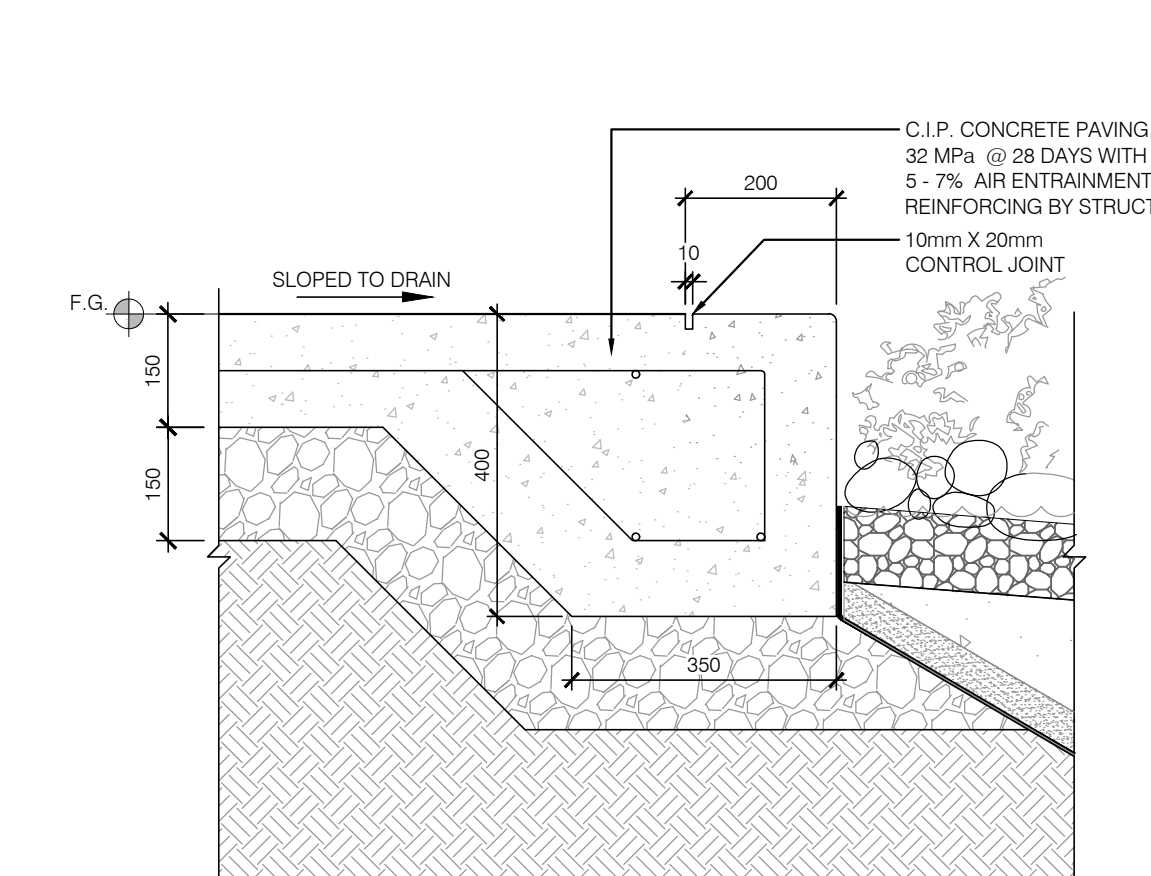
**PROJECT MGR:** BJ  
**APPROVED BY:** NK

**SHEET TITLE**  
 40-YEAR CANOPY PROJECTION

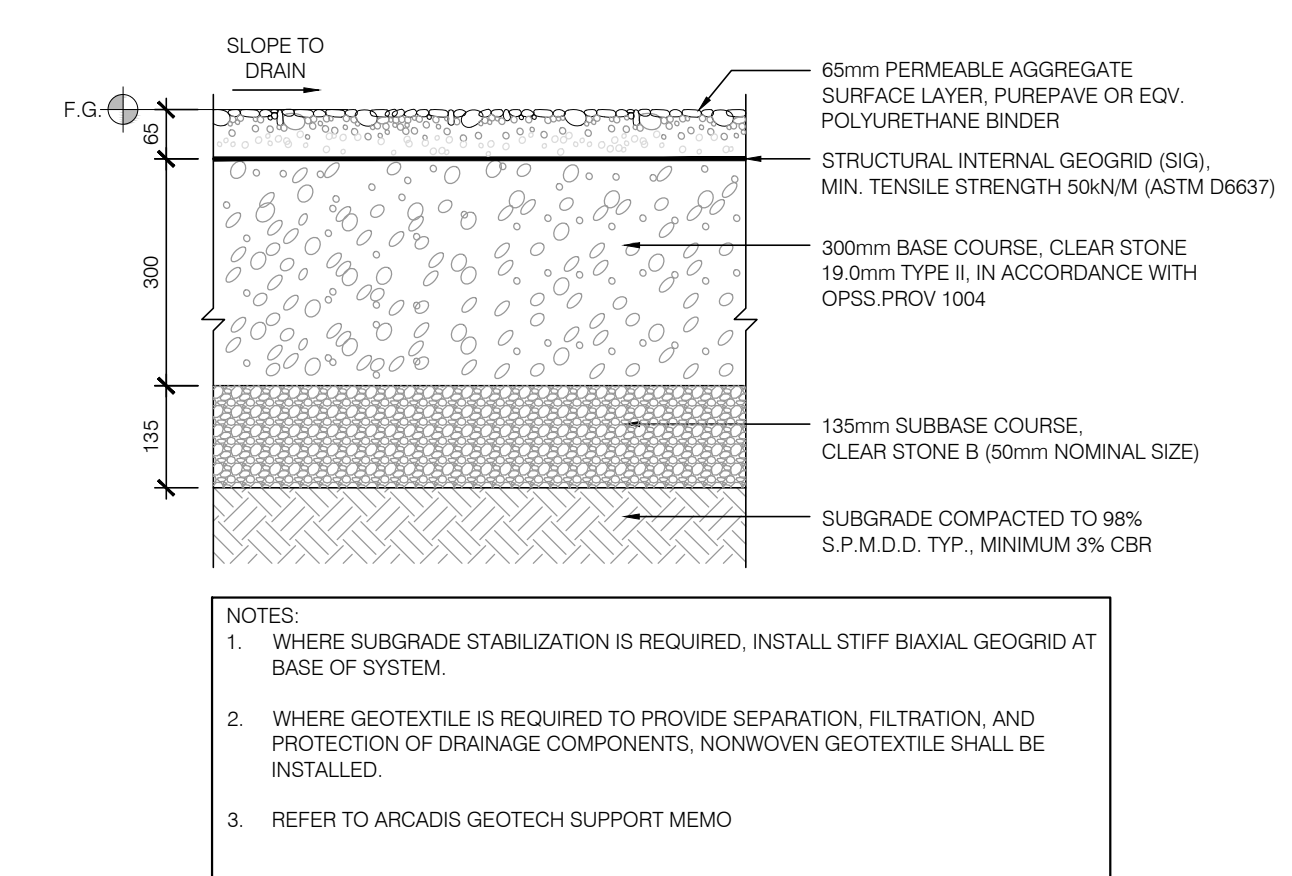
**SHEET NUMBER** L-201 **ISSUE** 2



1 C.I.P. CONCRETE PAVING  
L-500 1:10

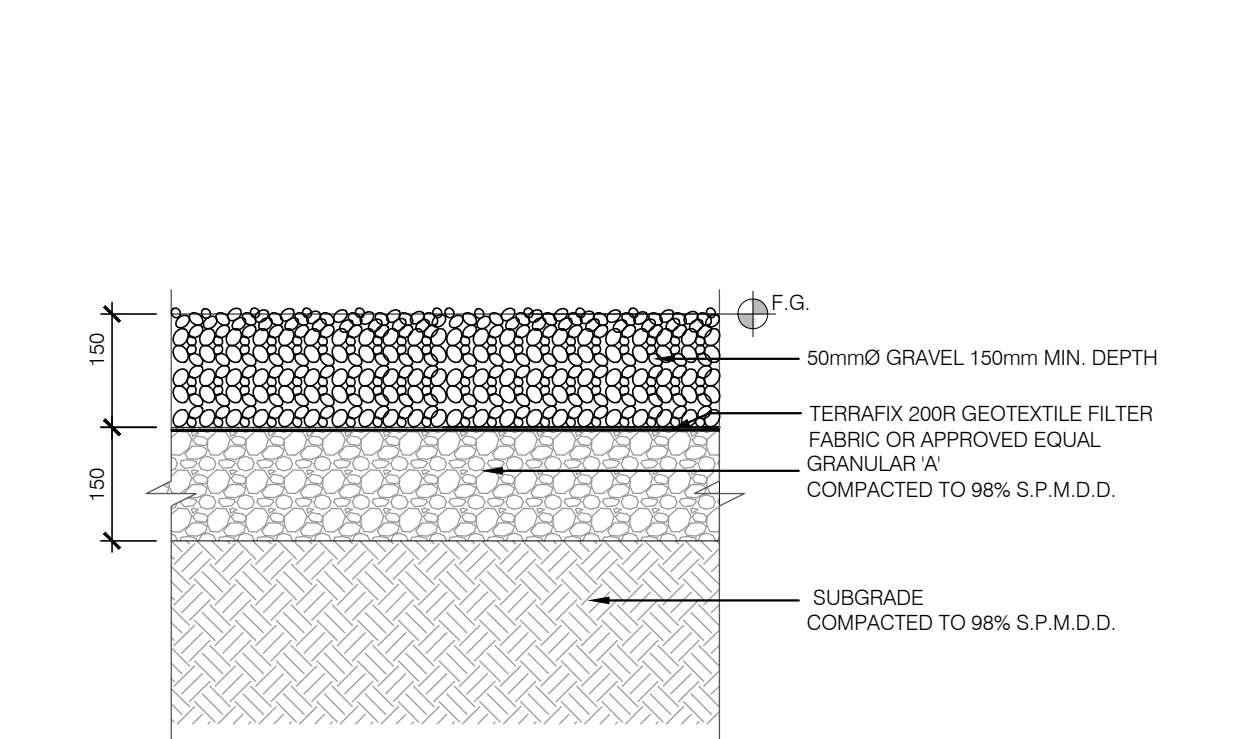


2 C.I.P. CONCRETE EDGE  
L-500 1:10

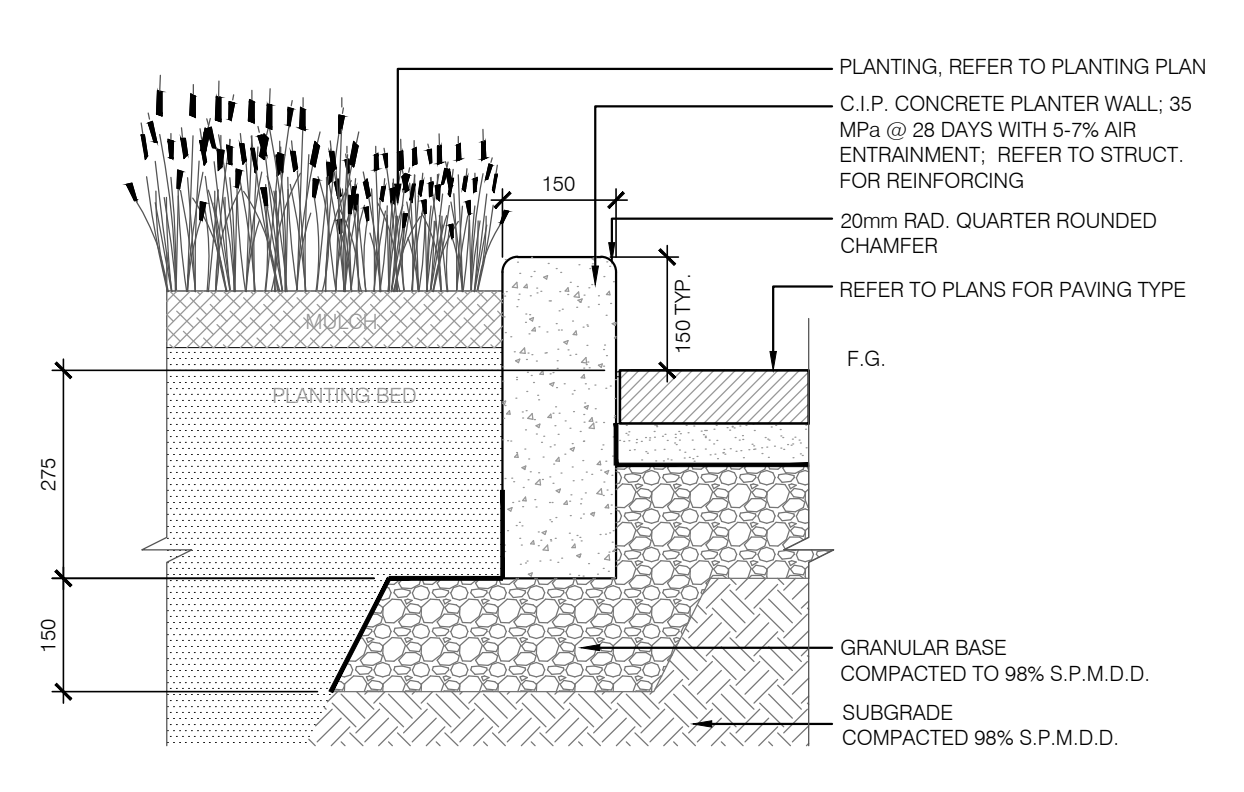


3 BOUND AGGREGATE PAVING  
L-500 1:10

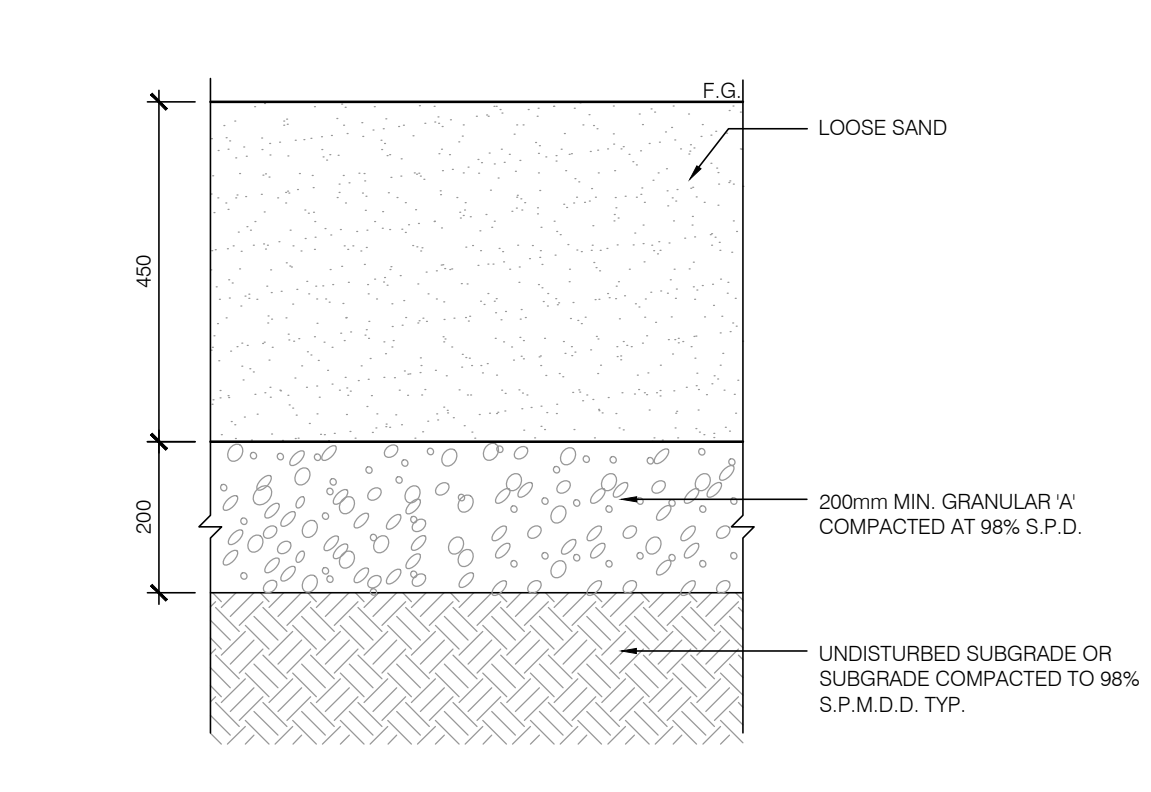
4 LEFT BLANK INTENTIONALLY  
L-500



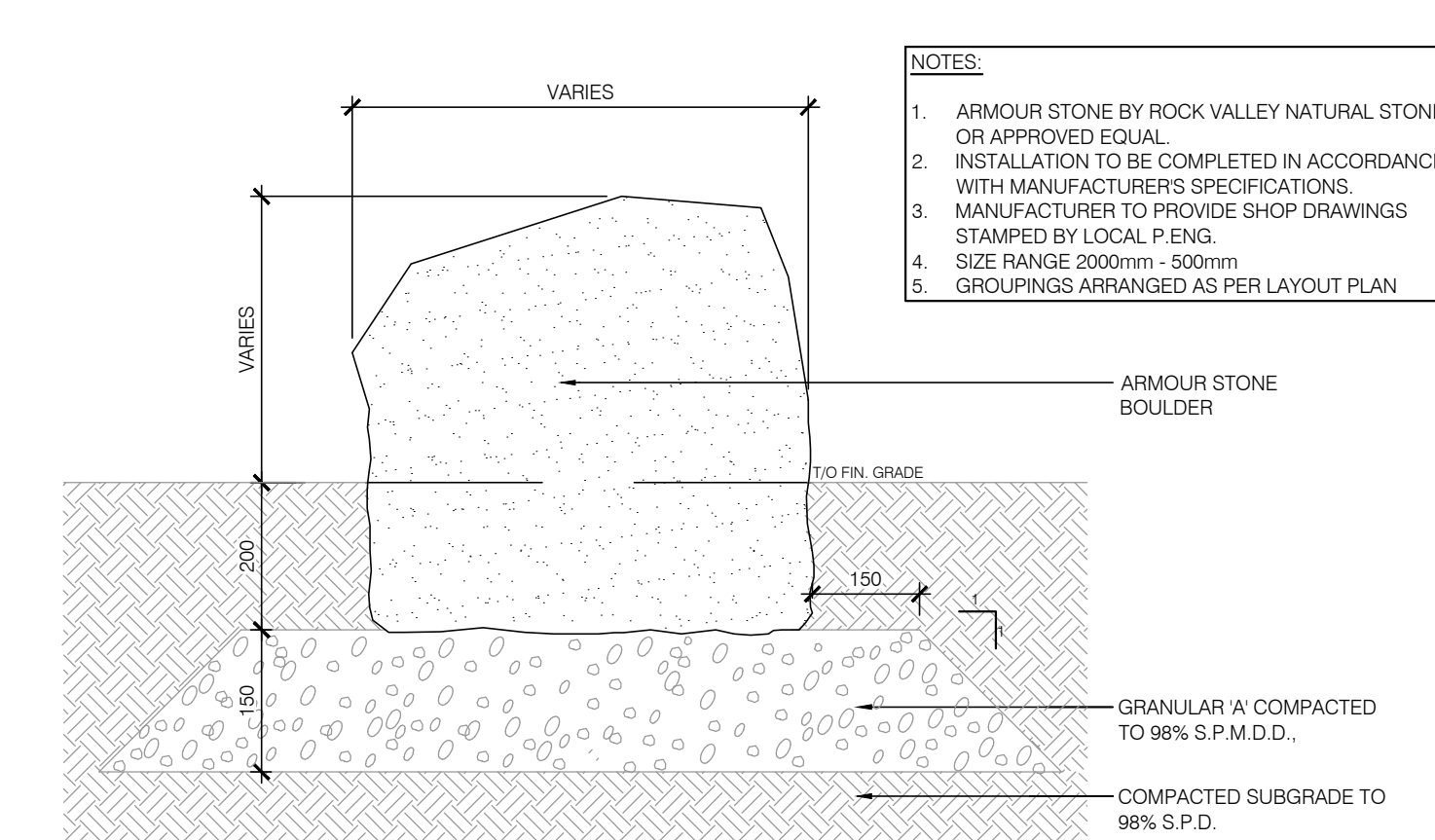
5 GRAVEL SURFACE  
L-500 1:10



6 C.I.P. CONCRETE CURB AT PLANTERS  
L-500 1:10



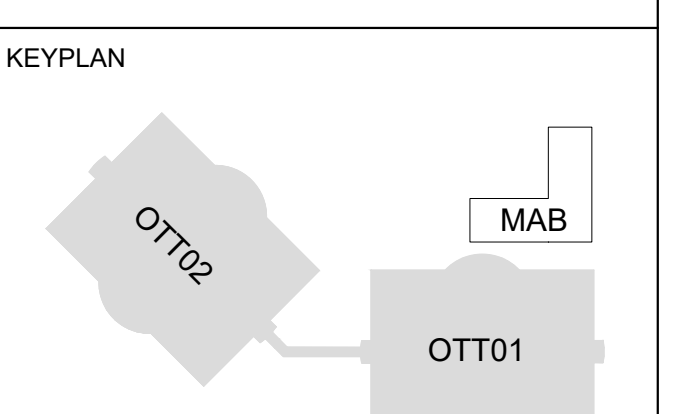
7 SAND VOLLEYBALL COURT  
L-500 1:10



8 BOULDER (ARMOURSTONE)  
L-500 1:20



**COPYRIGHT**  
This drawing has been prepared solely for the intended use, thus any reproduction or distribution for any purpose other than authorized by Arcadis is forbidden. Written dimensions shall have precedence over scaled dimensions. Contractors shall verify and be responsible for all dimensions and conditions on the job, and Arcadis shall be informed of any variations from the drawing. Shop drawings shall be submitted to Arcadis for general conformance before proceeding with fabrication.  
Arcadis Architects (Canada) Inc.



**ISSUES**

No.	DESCRIPTION	DATE
1	ISSUED FOR SPC #1	2025-12-12
2	ISSUED FOR SPC #2	2026-05-08
3	ISSUED FOR DD & PERMIT #1	2026-07-07

**CONSULTANTS**

**ARUP**  
47 Clarence Street, Suite 202,  
Ottawa, ON, K1N 5G9

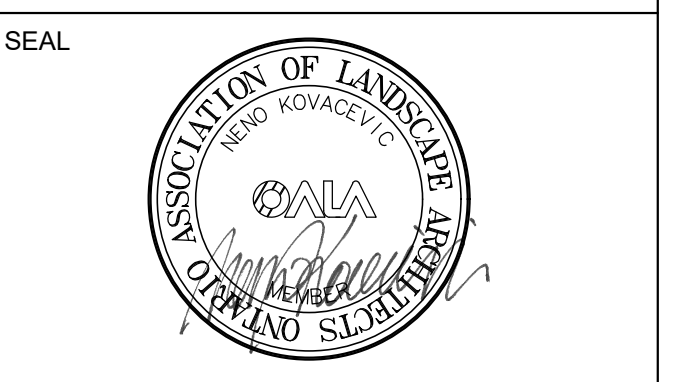
**TEECOM**  
30 California Street  
San Francisco, CA 94111  
2016-07-2000

**SENEZ CO**  
FIRE SCIENCE & ENGINEERING  
93 Skyway Avenue, Suite 102  
Toronto, ON, M9W 6R6

**TOTAL OPENING CONSULTANTS**  
895 Don Mills Rd. Suite 900,  
Toronto, ON M3C 1W3

**CBRE**  
340 Albert Street, Suite 1900  
Ottawa, ON, K1R 7Y6

**Matrix**  
6131 Perth Street  
Richmond, ON, K0A 2Z0



**SPC PACKAGE NOT FOR CONSTRUCTION**

**PRIME CONSULTANT**

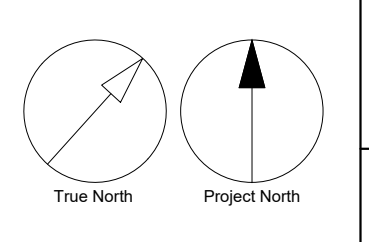
**ARCADIS**  
333 Preston Street - Suite 500  
Ottawa ON K1S 5N4 Canada  
tel 613 225 1311  
www.arcadis.com

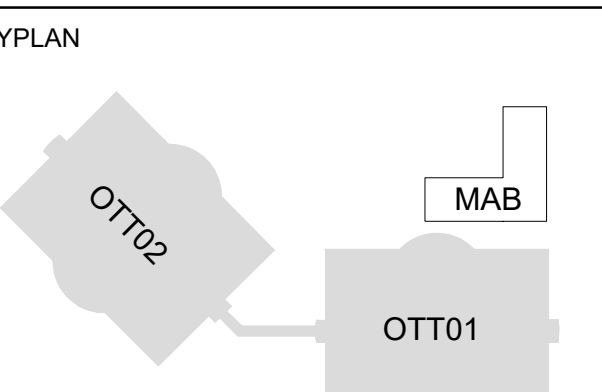
**PROJECT**  
CISCO OTTAWA CAMPUS  
MAB  
2000 Innovation Drive,  
Kanata, ON K2K 3E8

<b>PROJECT NO.:</b> MAB-30298433	<b>APPLICATION NO.:</b> PC2025-0127
<b>DRAWN BY:</b> ARCADIS	<b>CHECKED BY:</b> BJ
<b>PROJECT MGR:</b> BJ	<b>APPROVED BY:</b> NK

**SHEET TITLE**  
LANDSCAPE  
DETAILS

<b>SHEET NUMBER</b> L-500	<b>ISSUE</b> 2
------------------------------	-------------------





**ISSUES**

No.	DESCRIPTION	DATE
1	ISSUED FOR SPC #1	2025-12-12
2	ISSUED FOR SPC #2	2026-05-09
3	ISSUED FOR DO & PERMIT #1	2026-07-07

**CONSULTANTS**

**ARUP**  
47 Clarence Street, Suite 202,  
Ottawa, ON, K1N 5P9

**TEECOM**  
30 California Street  
San Francisco, CA 94111  
(415) 877-2888  
www.teecom.com

**SENEZCO**  
FIRE SCIENCE & ENGINEERING  
93 Skyway Avenue, Suite 102  
Toronto, ON, M9W 6R6

**TOTAL OPENING CONSULTANTS**  
895 Don Mills Rd. Suite 900,  
Toronto, ON M3C 1W3

**CBRE**  
340 Albert Street, Suite 1900  
Ottawa, ON, K1R 7Y6

**Matrix**  
6131 Perth Street  
Richmond, ON, N6A 2Z0



**SPC PACKAGE**  
NOT FOR CONSTRUCTION

**PRIME CONSULTANT**

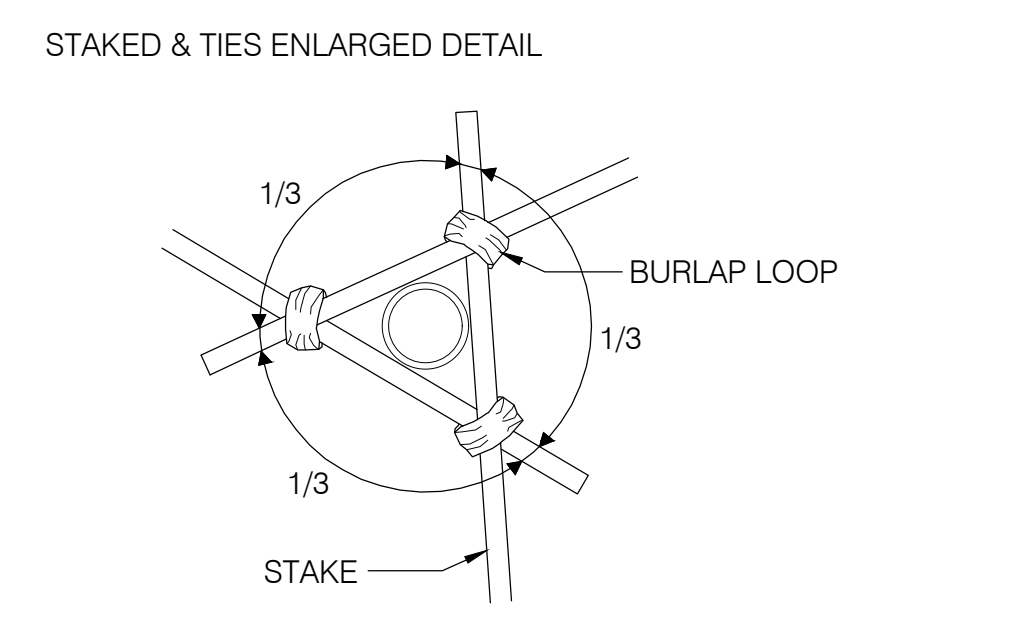
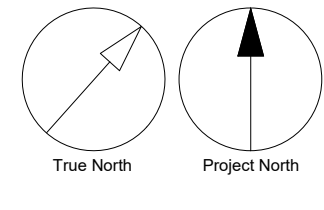
333 Preston Street - Suite 500  
Ottawa ON K1S 5N4 Canada  
Tel 613 225 1311  
www.arcadis.com

**PROJECT**  
CISCO OTTAWA CAMPUS  
MAB  
2000 Innovation Drive,  
Kanata, ON K2K 3E8

<b>PROJECT NO.:</b> MAB-30298433	<b>APPLICATION NO.:</b> PC2025-0127
<b>DRAWN BY:</b> ARCADIS BJ	<b>CHECKED BY:</b> BJ
<b>PROJECT MGR:</b> BJ	<b>APPROVED BY:</b> NK

**SHEET TITLE**  
PLANTING  
DETAILS

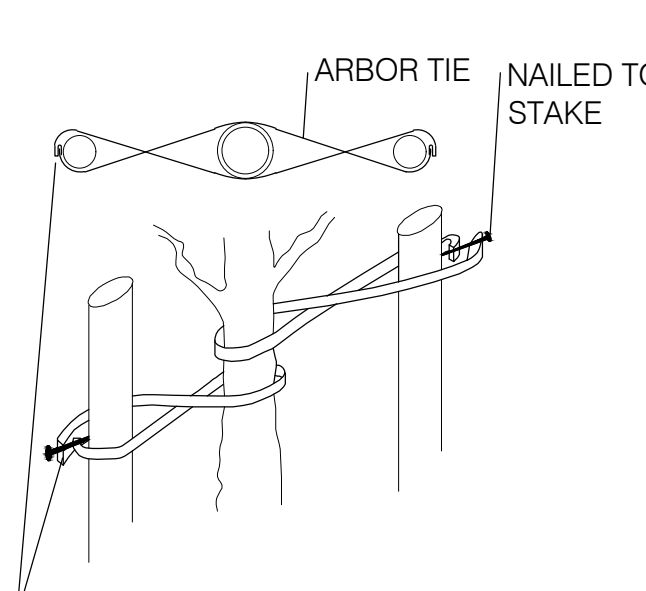
<b>SHEET NUMBER</b> L-501	<b>ISSUE</b> 2
------------------------------	-------------------



**STAKES & TIES:**

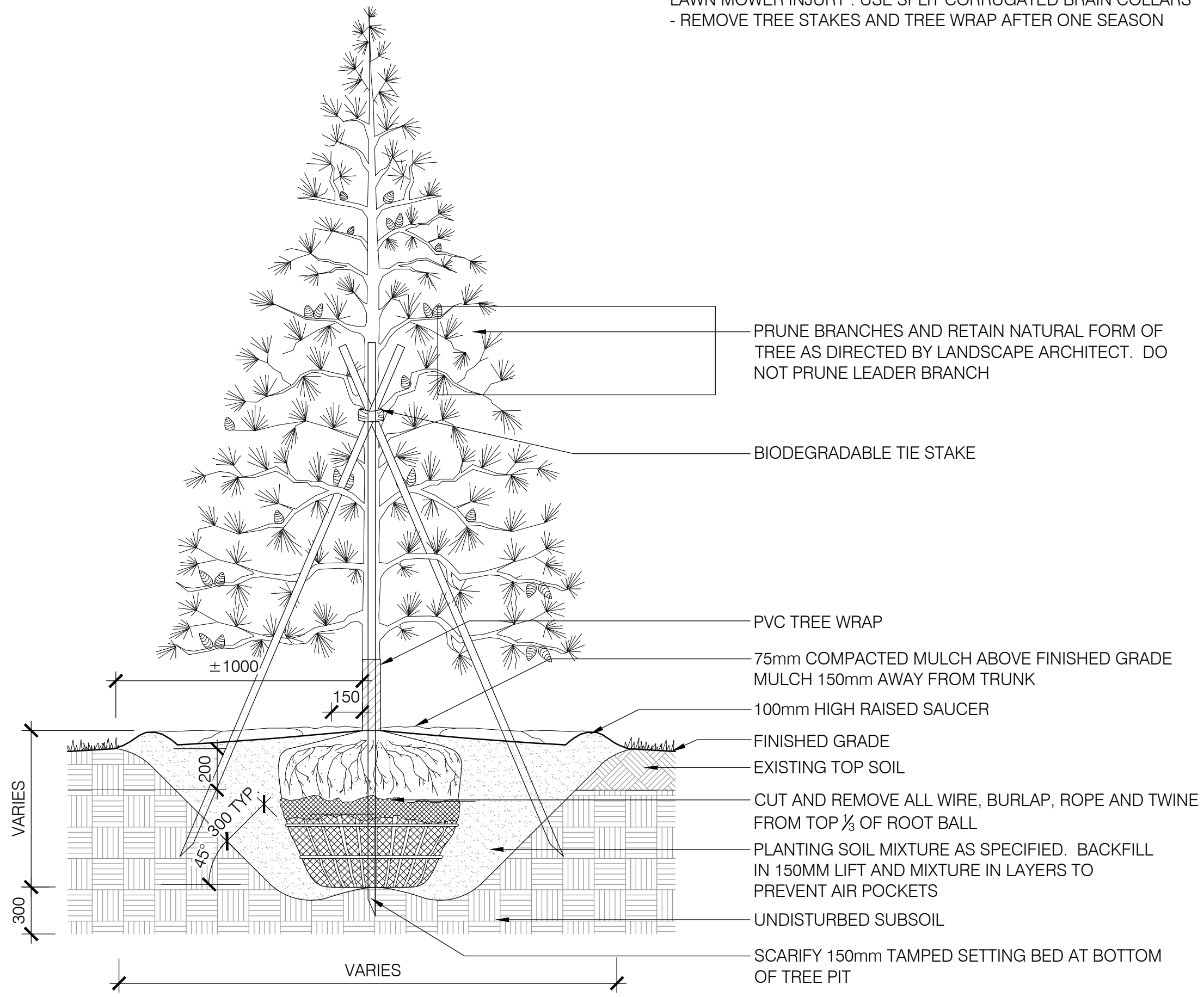
- STAKE BEFORE PLANTING USE ONE ROUNDED WOODEN STAKE, MINIMUM 2m LONG, 75mm AVERAGE DRIVEN 300mm INTO SUBSOIL PRIOR TO PLANTING
- TIE USING BIODEGRADABLE MATERIAL SUCH AS FOLDED BURLAP, STAPLED TO STAKE WITH FENCE STAPLES OR ROOFING NAILS
- APPLY RODENT PROTECTION WHERE REQUIRED. (TREES UNDER 45mm CALIPER)

- NOTES:**
- OBTAIN WRITTEN CONFIRMATION OF UTILITY LOCATES PRIOR TO COMMENCEMENT OF DIGGING
  - DIG ALL HOLES BY HAND WHEN CLOSER THAN 1.0M TO UNDERGROUND POWER, TELEPHONE AND GAS ALIGNMENTS
  - USE ROOT DEFLECTOR ON THE UTILITY SIDE OF REQUIRED
  - ENSURE BASE OF TREE PIT IS STABLE IN ORDER TO MAINTAIN THE DESIRED TREE LEVEL AND GRADE
  - TREES TO BE SPRAYED WITH APPROVED ANTI-DESICCANT PRIOR TO TRANSPLANTING UNLESS PLANTED WITHIN 48 HOURS OF DIGGING (IF PLANTED IN FULL LEAF)
  - SET TREE 50mm HIGHER THAN SURROUNDING GRADE TO ALLOW FOR SETTLEMENT
  - SCARIFY COMPACTED SUBGRADE TO 500MM DEEP IN AREA 5 X ROOTBALL DIAMETER
  - DIG PIT 300MM WIDER THAN ROOTBALL PERIMETER
  - MULCH WITH SHREDDED BARK OR COMPOSTED HARDWOOD CHIPS
  - TRUNK PROTECTION MECHANICAL INJURY: USE PLASTIC TREE COLLAR ANIMAL INJURY: USE SPIRAL TREE GUARDS OR SCREEN COLLARS SUNSCALD INJURY: PAINT TRUNK WITH WHITE LATEX OR WHITE-WASH, OR WRAP WITH BURLAP, 'KRAFT WRAP' INSTALLED FROM THE GROUND UP TO ABOVE LOWEST BRANCHES LAWN MOWER INJURY: USE SPLIT CORRUGATED BRAIN COLLARS
  - REMOVE TREE STAKES AND TREE WRAP AFTER ONE SEASON

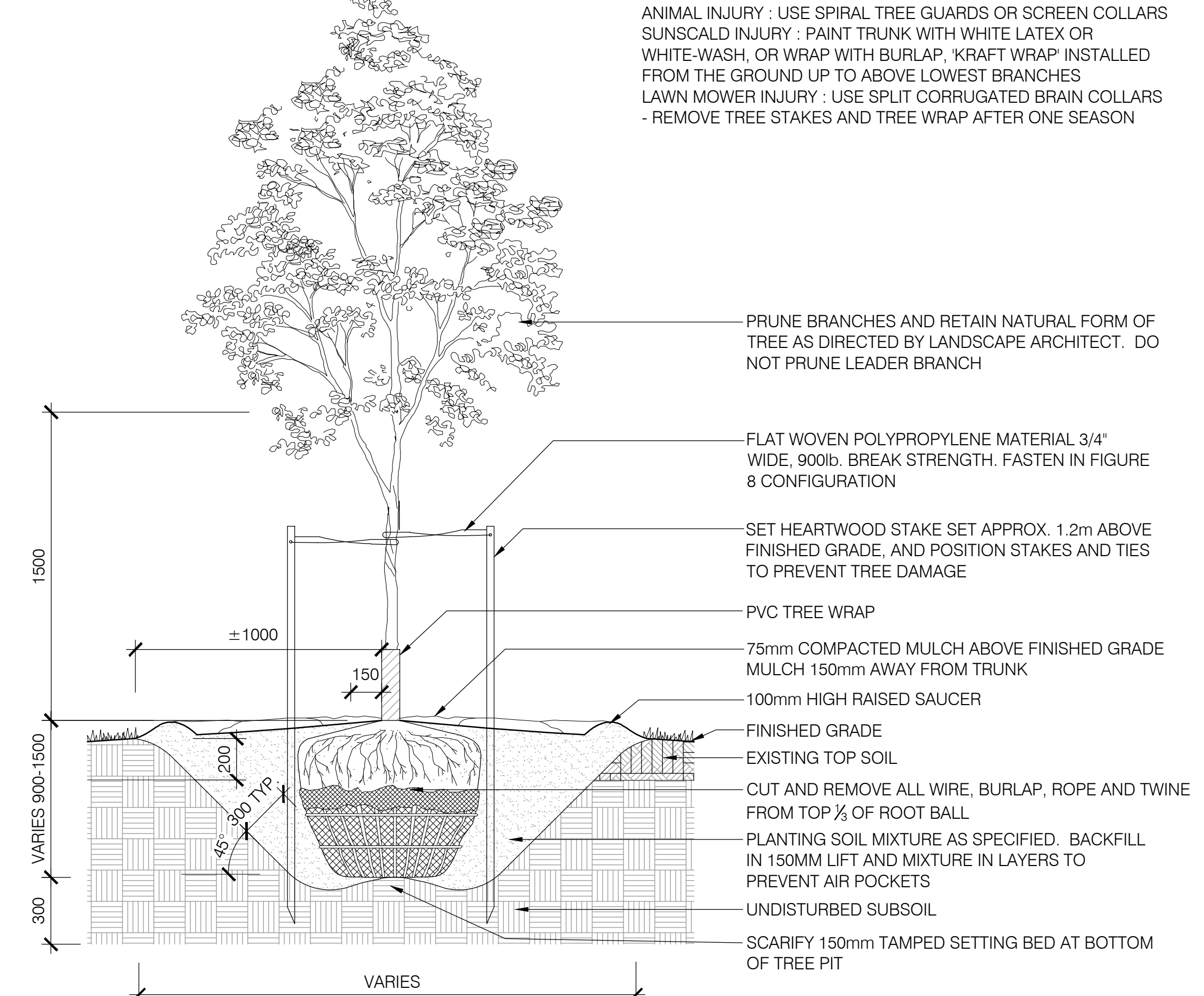


FOLD ENDS OF ARBOR TIE BACK, SECURE TO STAKE WITH 1" GALVANIZED ROOFING NAIL OR USE A KNOT.

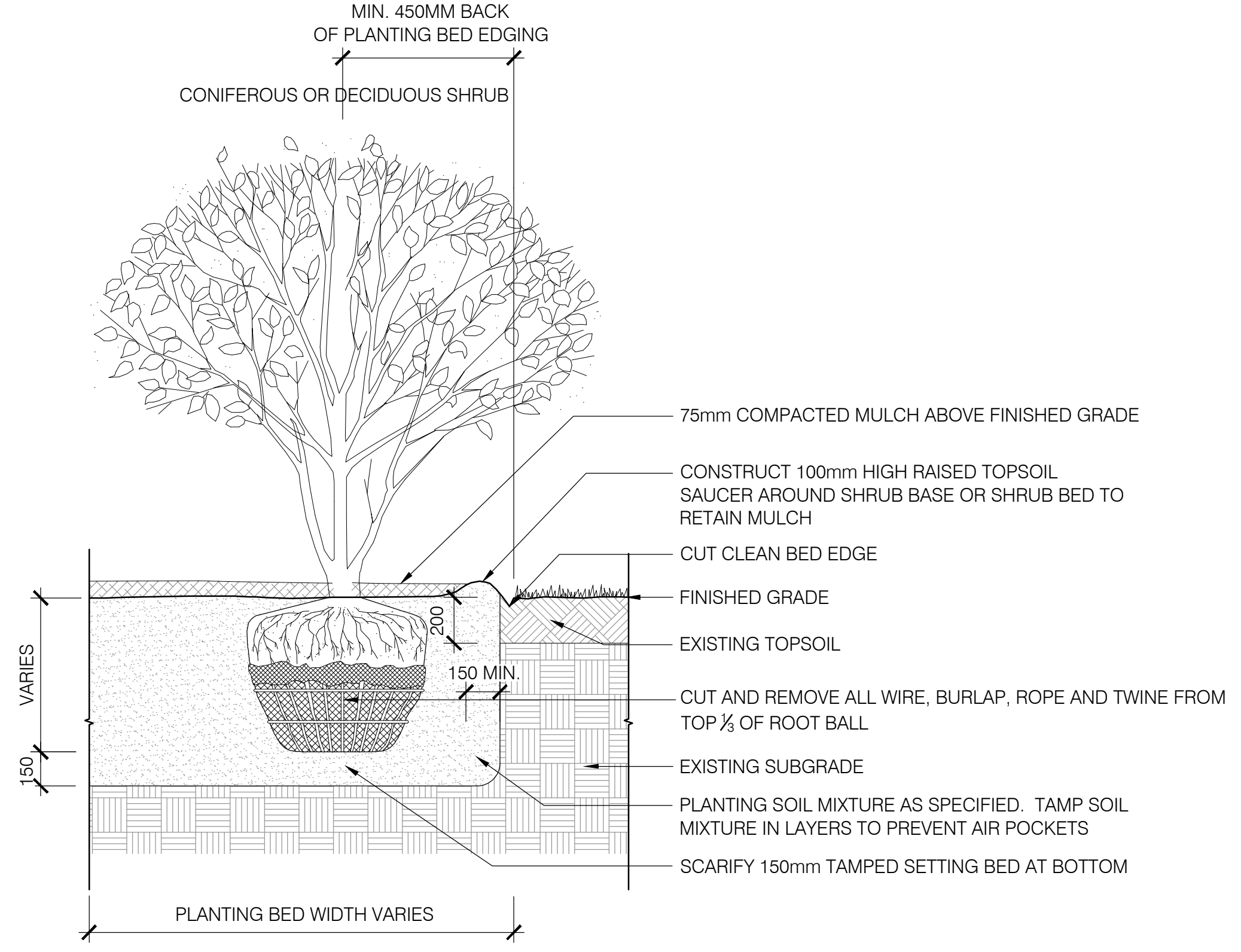
- NOTES:**
- OBTAIN WRITTEN CONFIRMATION OF UTILITY LOCATES PRIOR TO COMMENCEMENT OF DIGGING
  - DIG ALL HOLES BY HAND WHEN CLOSER THAN 1.0M TO UNDERGROUND POWER, TELEPHONE AND GAS ALIGNMENTS
  - USE ROOT DEFLECTOR ON THE UTILITY SIDE OF REQUIRED
  - ENSURE BASE OF TREE PIT IS STABLE IN ORDER TO MAINTAIN THE DESIRED TREE LEVEL AND GRADE
  - TREES TO BE SPRAYED WITH APPROVED ANTI-DESICCANT PRIOR TO TRANSPLANTING UNLESS PLANTED WITHIN 48 HOURS OF DIGGING (IF PLANTED IN FULL LEAF)
  - SET TREE 50mm HIGHER THAN SURROUNDING GRADE TO ALLOW FOR SETTLEMENT
  - SCARIFY COMPACTED SUBGRADE TO 500MM DEEP IN AREA 5 X ROOTBALL DIAMETER
  - DIG PIT 300MM WIDER THAN ROOTBALL PERIMETER
  - MULCH WITH SHREDDED BARK OR COMPOSTED HARDWOOD CHIPS
  - TRUNK PROTECTION MECHANICAL INJURY: USE PLASTIC TREE COLLAR ANIMAL INJURY: USE SPIRAL TREE GUARDS OR SCREEN COLLARS SUNSCALD INJURY: PAINT TRUNK WITH WHITE LATEX OR WHITE-WASH, OR WRAP WITH BURLAP, 'KRAFT WRAP' INSTALLED FROM THE GROUND UP TO ABOVE LOWEST BRANCHES LAWN MOWER INJURY: USE SPLIT CORRUGATED BRAIN COLLARS
  - REMOVE TREE STAKES AND TREE WRAP AFTER ONE SEASON



1 CONIFEROUS TREE PLANTING  
L-501 / 1:20

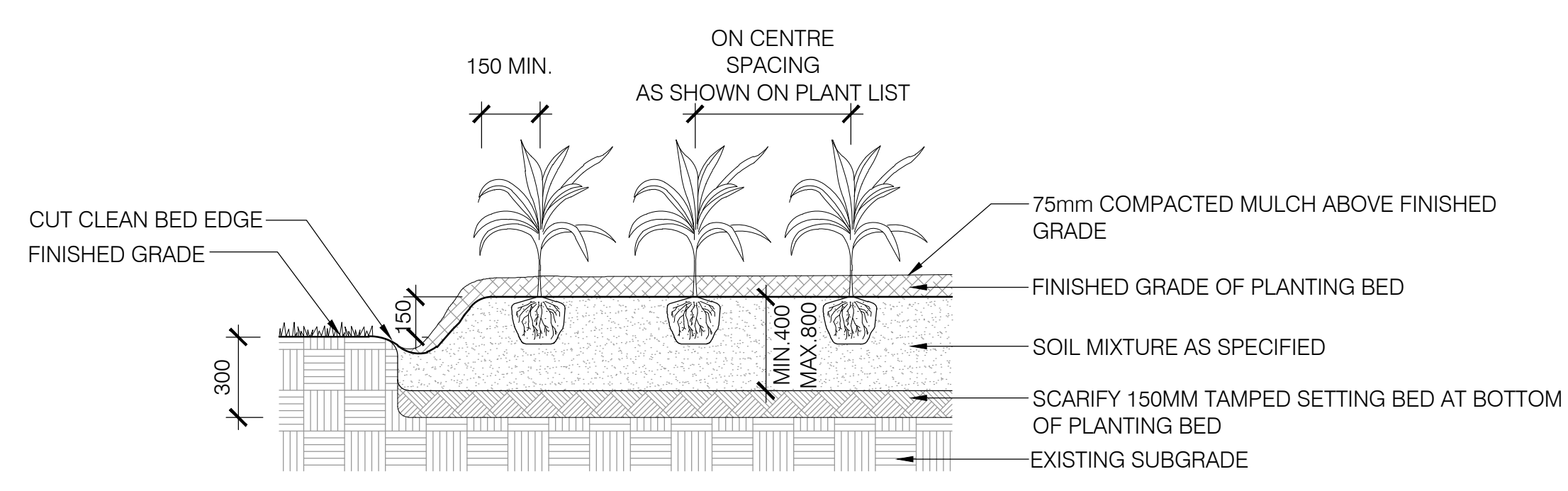


2 DECIDUOUS TREE PLANTING  
L-501 / 1:20



3 SHRUB PLANTING  
L-501 / 1:20

- NOTES:**
- PREPARATION: EXCAVATE PLANTING BED TO SIZE OUTLINED ON DRAWINGS. MAINTAIN MINIMUM 350mm DEPTH
  - PLANTING BED TO BE RAISED A MINIMUM OF 150mm ABOVE THE FINISHED GRADE OF SOD AND/OR SURROUNDING AREA
  - SET PERENNIAL 50mm HIGHER THAN SURROUNDING GRADE TO ALLOW FOR SETTLEMENT
  - PLANTING IN GROUPS SHALL BE SET IN EQUAL ON CENTRE SPACING
  - SPACING PER PLANT LIST DIRECTIONS, IN STAGGERED ROWS
- FERTILIZER:**
- APPLY APPROVED WATER SOLUBLE FERTILIZER AT A RATE OF 9kg PER 100 m<sup>2</sup>
  - ENSURE FERTILIZER IS CONTAINED WITHIN SAUCER AND EVENLY RAKED INTO PLANTING SOIL MIXTURE.
- BARE ROOT (B.R. IN PLANT LIST):**
- SET ALL PLANT MATERIAL SLIGHTLY HIGHER THAN ADJACENT GRADE. SET BARE ROOT PLANT MATERIAL SO THAT ROOTS LIE IN NATURAL STATE. GENTLY BACKFILL WITH SOIL MIXTURE, WORKING SOIL BETWEEN ROOTS. LIGHTLY TAMP SOIL TO ELIMINATE AIR POCKETS AND REDUCE SETTLEMENT. WATER PLANTING BED THOROUGHLY, IMMEDIATELY AFTER PLANTING.



4 PERENNIAL PLANTING  
L-501 / 1:20