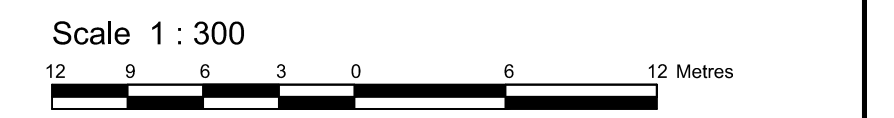


PLAN 4R-37664
 Received and deposited
June 16th, 2026
 Latesha Tynes
 Representative for the
 Land Registrar for the
 Land Titles Division of
 Ottawa-carleton (No.4)

SCHEDULE			
PART	BLOCK	PLAN	PIN
1	PART OF 3	4M-1075	PART OF 04518-0077
2	PART OF 11		PART OF 04518-0109

Parts 1 and 4: Subject to easement, Inst.'s OC677520 & OC677521.

PLAN OF SURVEY OF
 PART OF BLOCKS 3 AND 11
 REGISTERED PLAN 4M-1075
 CITY OF OTTAWA
 Surveyed by Annis, O'Sullivan, Vollebek Ltd.



The intended plot size of the plan is 762 mm in width by 762 mm in height when plotted at a scale of 1:300.

Metric
 DISTANCES AND COORDINATES SHOWN ON THIS PLAN
 ARE IN METRES AND CAN BE CONVERTED TO FEET BY
 DIVIDING BY 0.3048.

Surveyor's Certificate
 I CERTIFY THAT:
 1. This survey and plan are correct and in accordance with the Surveys Act, the Surveyors Act and the Land Titles Act and the regulations made under them.
 2. The survey was completed on the 11th day of June, 2026.

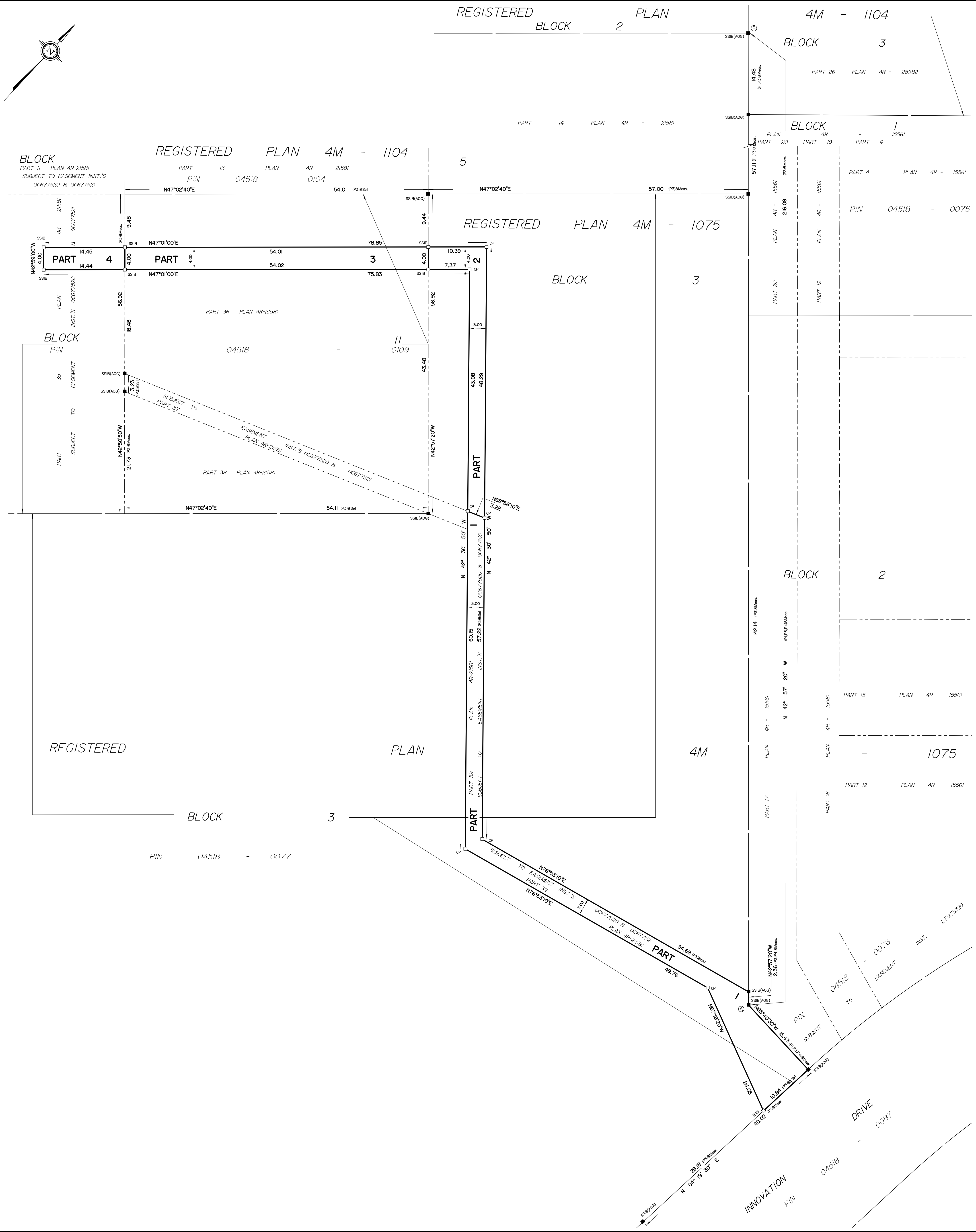
June 11, 2026
 T. Hartwick
 Ontario Land Surveyor

This plan of survey relates to AOLS Plan Submission Form Number V-130615

- Notes & Legend**
- Denotes Survey Monument Planted
 - Denotes Survey Monument Found
 - SSIB - Short Standard Iron Bar
 - IB - Iron Bar
 - CP - Concrete Pin
 - (AOG) - Annis, O'Sullivan, Vollebek Ltd.
 - Meas. - Measured
 - (P1) - Registered Plan 4M-1075
 - (P2) - (AOG) Coordinate File Per (P1)
 - (P3) - Plan 4R-21581
 - (P4) - (AOG) Topographic Plan of Survey dated July 24, 2025

Distances shown on this plan are ground distances and can be converted to grid distances by multiplying by the combined scale factor of 0.99991.
 Bearings are grid, derived from Can-Net 2016 Real Time Network GPS observations on reference points A and B, shown hereon, having a bearing of N42°57'20"W and are referenced to Specified Control Points 01919680037 and 01919791051, MTM Zone 9 (76°30' West Longitude) NAD-83 (original).
 Coordinates are derived from Can-Net 2016 Real Time Network GPS observations referenced to Specified Control Points 01919680037 and 01919791051, MTM Zone 9 (76°30' West Longitude) NAD-83 (original).
 Coordinate values are to urban accuracy in accordance with O. Reg. 216/10.
 .01919680037 Northing 5023507.89 Easting 351533.87
 .01919791051 Northing 5032569.51 Easting 343633.72
 . Point A Northing 5022862.07 Easting 349854.61
 . Point B Northing 5022820.17 Easting 349707.33
 Caution: Coordinates cannot, in themselves, be used to re-establish corners or boundaries shown on this plan.

For bearing comparisons, a rotation of 0°23'20" counter-clockwise was applied to bearings on plans P1 and P3.



N:\Project Directory\40606_PCL_Construction_2020\Innovation Drive_Community_1102\Final\40606_PCL_Construction_PIBs\3.11.4M-1075.R.F.dwg