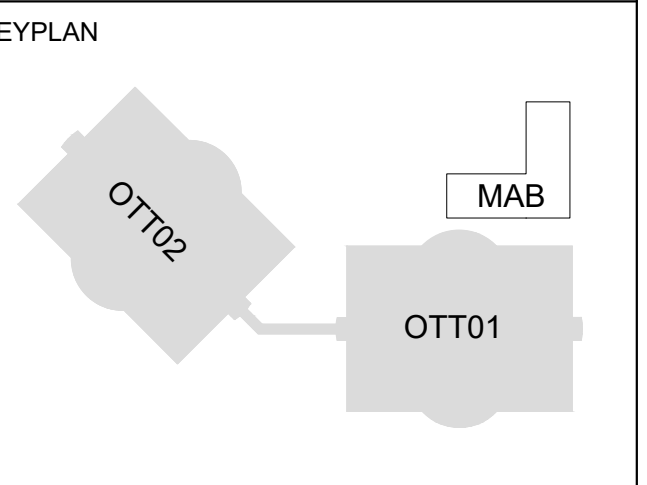


COPYRIGHT
 This drawing has been prepared solely for the intended use, thus any reproduction or distribution for any purpose other than authorized by Arcadis is forbidden. Written dimensions shall have precedence over scaled dimensions. Contractors shall verify and be responsible for all dimensions and conditions on the job, and Arcadis shall be informed of any variations from the dimensions and conditions shown on the drawing. Shop drawings shall be submitted to Arcadis for general conformance before proceeding with fabrication.
Arcadis Architects (Canada) Inc.



ISSUES	DESCRIPTION	DATE
1	ISSUED FOR SPC #1	2025-12-12

- CONSULTANTS**
- ARUP**
47 Clarence Street, Suite 202, Ottawa, ON, K1N 5P9
 - TEECOM**
© California Street, San Francisco, CA 94102-3200
 - SENEZCO**
FIRE SCIENCE & ENGINEERING
93 Skyway Avenue, Suite 102, Toronto, ON, M9W 6N6
 - TOTAL OPENING CONSULTANTS**
895 Don Mills Rd., Suite 900, Toronto, ON M3C 1W3
 - CBRE**
340 Albert Street, Suite 1900, Ottawa, ON, K1R 7Y6
 - Matrix**
6131 Peach Street, Richmond, ON, K0A 2Z0



SPC PACKAGE
 NOT FOR CONSTRUCTION

PRIME CONSULTANT
ARCADIS
 333 Preston Street - Suite 500, Ottawa, ON K1S 5N4, Canada
 tel: 613 225 1311
 www.arcadis.com

PROJECT
CISCO OTTAWA CAMPUS MAB
 2000 Innovation Drive, Kanata, ON K2K 3E8

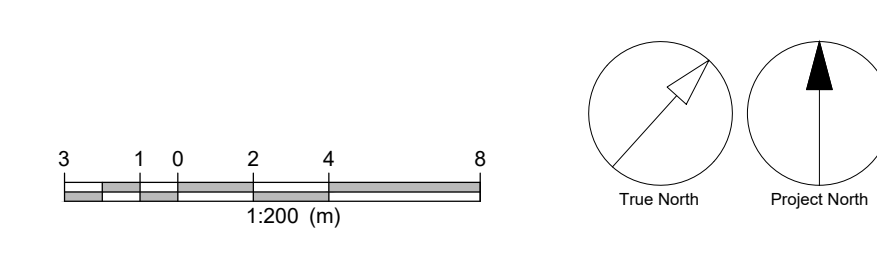
PROJECT NO: MAB-30298433	APPLICATION NO: PC2025-0127
DRAWN BY: ARCADIS	CHECKED BY: BJ
PROJECT MGR: BJ	APPROVED BY: NK

SHEET TITLE
LANDSCAPE LAYOUT AND MATERIALS PLAN

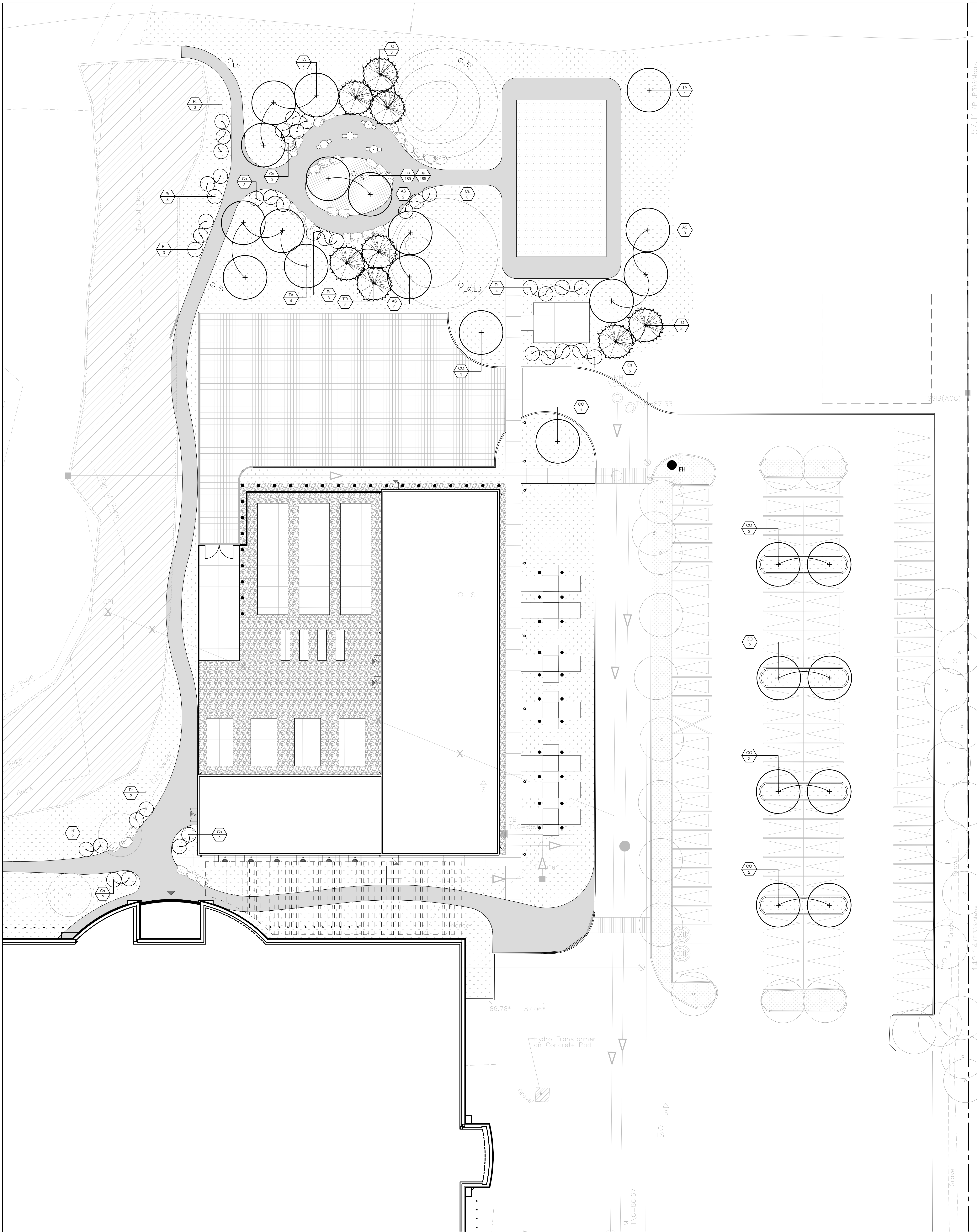
SHEET NUMBER
L-100

ISSUE
1

- LEGEND**
- EXISTING TREE TO REMAIN
 - PROPOSED DECIDUOUS TREE
 - PROPOSED CONIFEROUS TREE
 - PROPOSED SPECIMEN SHRUB
 - NATIVE SEED MIX
 - PERENNIAL PLANTING
 - EXISTING SOD TO REMAIN
 - BOUND AGGREGATE PAVING
 - C.I.P. CONCRETE PAVING
 - GRAVEL
 - LOOSE SAND
 - TABLE AND CHAIRS
 - PROPOSED LIGHT STANDARD
 - EXISTING LIGHT STANDARD
 - ARMOURSTONE BOULDERS



1 LAYOUT AND MATERIALS PLAN
 L-100 1:200



1 PLANTING PLAN
L-200 1:200

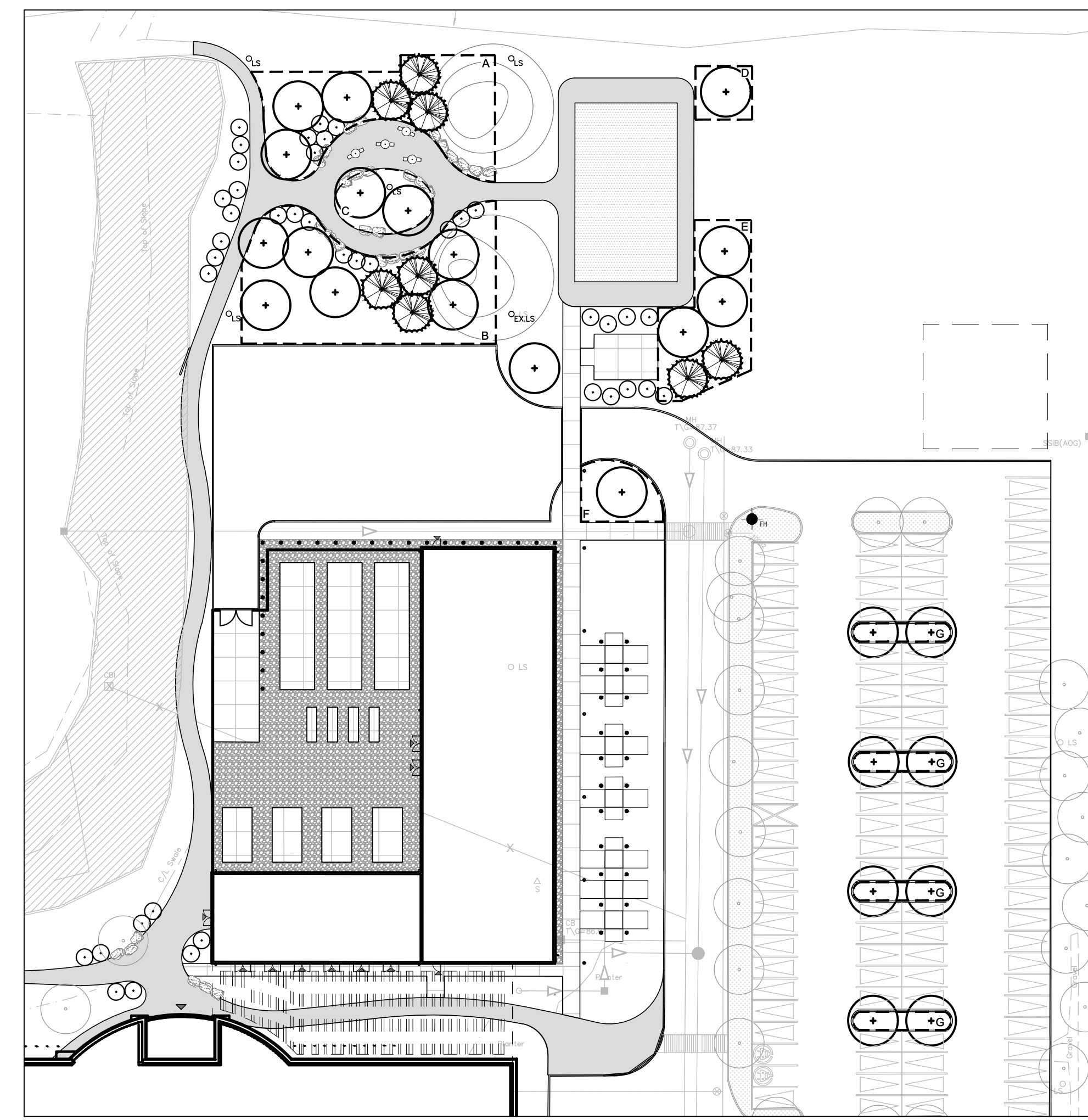
NATIVE PERENNIAL WILDFLOWER BLEND
 8105 - NATIVE PERENNIAL WILDFLOWER BLEND BY 'OSC SEEDS' OR APPROVED EQUAL
 12% BLACK EYED SUSAN (RUDBECKIA HIRTA)
 5% BLANKET FLOWER (GAILLARDIA ARISTATA)
 20% BLUE FLAX (LINUM PERENNE)
 3% BUTTERFLY WEED (ASCLEPIAS TUBEROSA)
 1% CANADA GOLDENROD (SOLIDAGA CANADENSIS)
 5% EVENING PRIMROSE (OENOTHERA BIENNIS)
 10% LANCE LEAF COREOPSIS (COREOPSIS LANCEOLATA)
 5% OX EYE SUNFLOWER (HELIANTHUS HELIANTHOIDES)
 15% PARTIDGE PEA (CHASMANTHUM LATIFOLIUM)
 1% PRAIRIE BLAZING STAR (LIATRIS PSYCNOSTACHYA)
 7% PURPLE CONEFLOWER (ECHINACEA PURPUREA)
 5% SHASA DASY (CHRYSANTHEMUM MAXIMUM LUECANTHEMUM)
 2% TALL WHITE BEARDTONGUE (PENSTEMON DIGITALIS)
 3% WILD BERGAMOT (MONARDA FISTULOSA)
 5% WILD LUPINS (LUPINE PERENNIS)
 SOW AT 25KG/HA (23 LBS/ACRE) OR 500G/180 SQ.M. FOR SMALLER AREAS
 TOTAL AREA SHOWN = 3642 m²

PLANT LIST

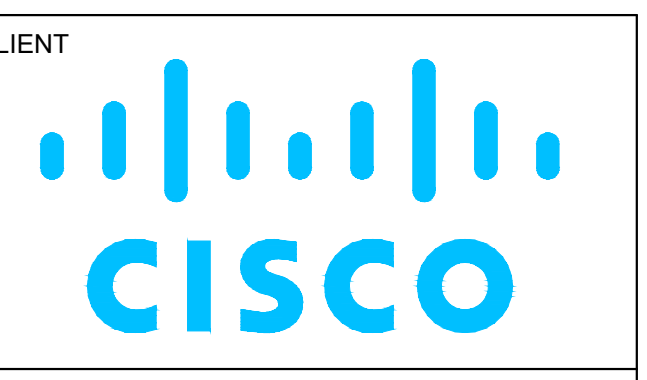
KEY	QTY	BOTANICAL NAME	COMMON NAME	SPACING	SPECIFICATION/ NOTES	NATIVE	DROUGHT TOLERANT
Deciduous Trees							
AS	7	<i>Acer saccharum</i>	Sugar Maple	As per plan	70mm WB	X	
CO	10	<i>Celtis occidentalis</i>	Common Hackberry	As per plan	70mm WB	X	
TA	8	<i>Tilia americana</i>	Basswood	As per plan	70mm WB	X	
Coniferous Trees							
TO	8	<i>Thuja occidentalis</i>	Eastern White Cedar	As per plan	70mm WB	X	X
Specimen Shrubs							
Cs	20	<i>Cornus sericea</i>	Red Osier Dogwood	As per plan	80cm 5 gal	X	
Rr	10	<i>Rosa rugosa</i>	Rugosa rose	As per plan	1000mm O.C		X
Rt	10	<i>Rhus typhina</i> 'Tiger Eyes'	Tiger Eye Cutleaf Sumac	As per plan	80cm 5 gal	X	X
Perennials							
cp	185	<i>Carex pensylvanica</i>	Pennsylvania Sedge	450mm O.C	3 gal	X	X
ep	185	<i>Echinacea purpurea</i>	Purple Coneflower	450mm O.C	3 gal	X	X

SOIL VOLUME MATRIX (REFER TO SOIL VOLUME PLAN)

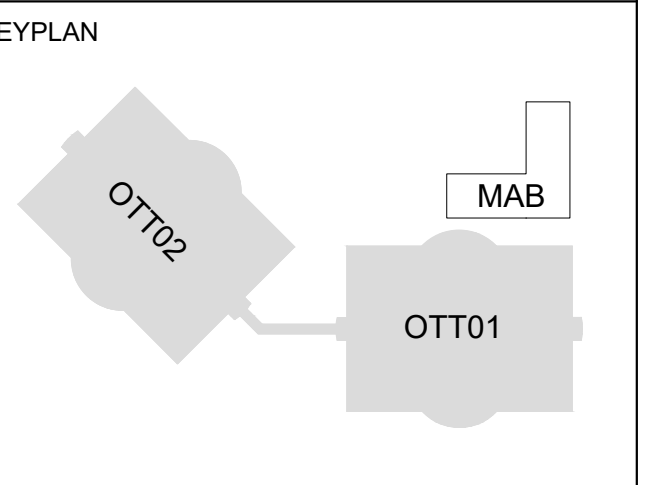
PLANTING ZONES	VOLUME CALCULATION AT 0.9m SOIL DEPTH	TREE QUANTITY	OTTAWA TARGET SOIL VOLUME (m ³)	DESIGN SOIL VOLUME (m ³)	ADEQUACY PERCENTAGE
A	287m ² x 0.9m = 258m ³	6	108	258	238%
B	416m ² x 0.9m = 374m ³	9	162	374	230%
C	72m ² x 0.9m = 64m ³	2	36	64	177%
D	44m ² x 0.9m = 40m ³	1	30	40	133%
E	182m ² x 0.9m = 163m ³	5	90	163	181%
F	62m ² x 0.9m = 55m ³	1	30	55	166%
G	25m ² x 0.9m = 22m ³	2	36	22	61%



2 SOIL VOLUME PLAN
L-200 1:500



COPYRIGHT
 This drawing has been prepared solely for the intended use, thus any reproduction or distribution for any purpose other than authorized by Arcadis is forbidden. Written dimensions shall have precedence over scaled dimensions. Contractors shall verify and be responsible for all dimensions and conditions on the job, and Arcadis shall be informed of any variations from the dimensions and conditions shown on the drawing. Shop drawings shall be submitted to Arcadis for general conformance before proceeding with fabrication.
 Arcadis Architects (Canada) Inc.



ISSUES

No.	DESCRIPTION	DATE
1	ISSUED FOR SPC #1	2025-12-12



SPC PACKAGE NOT FOR CONSTRUCTION

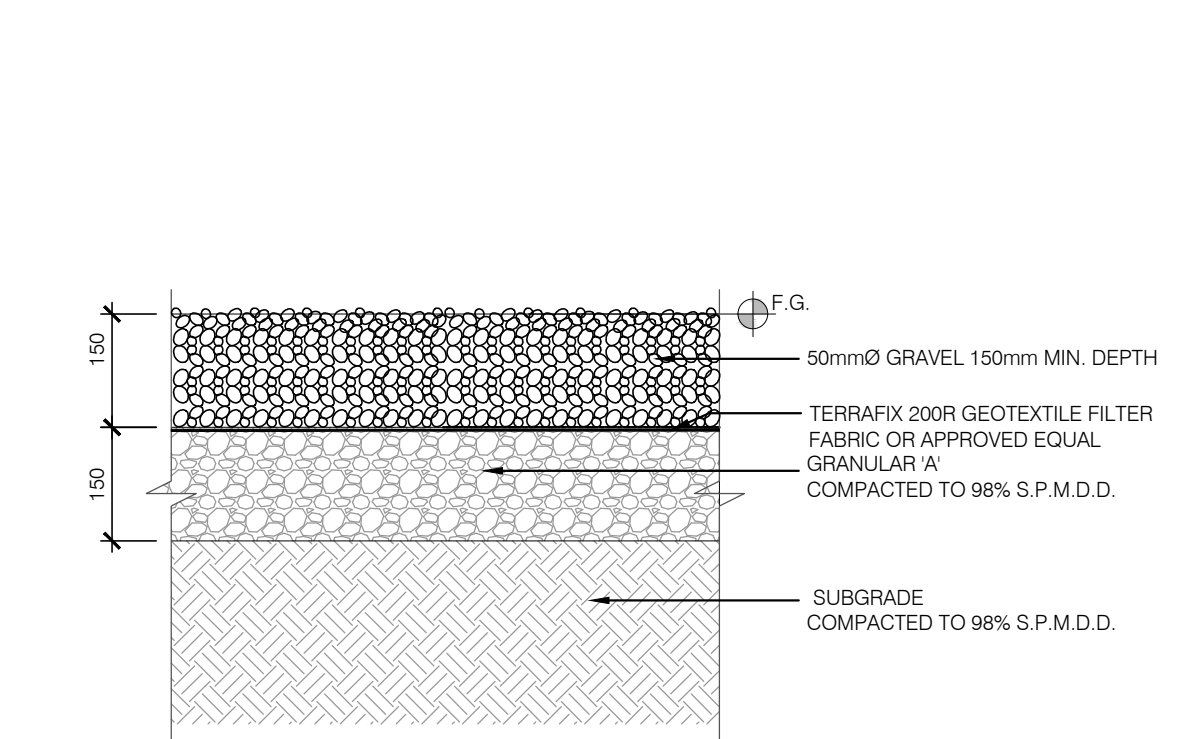
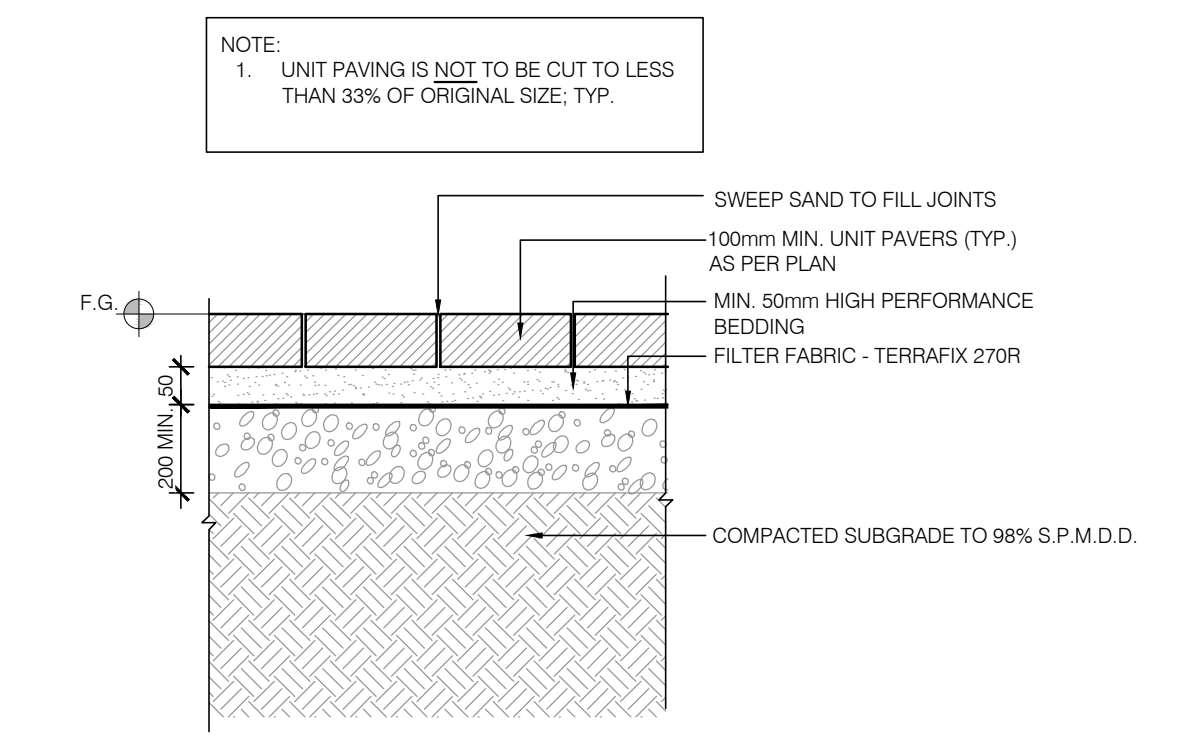
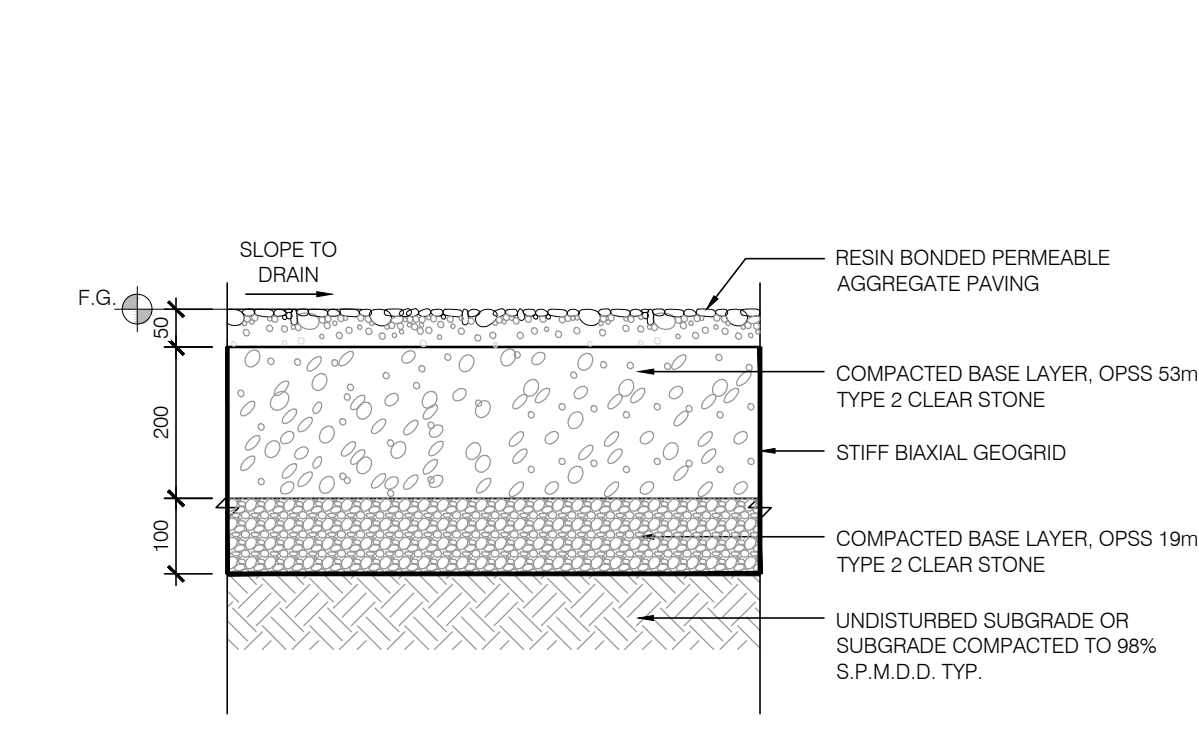
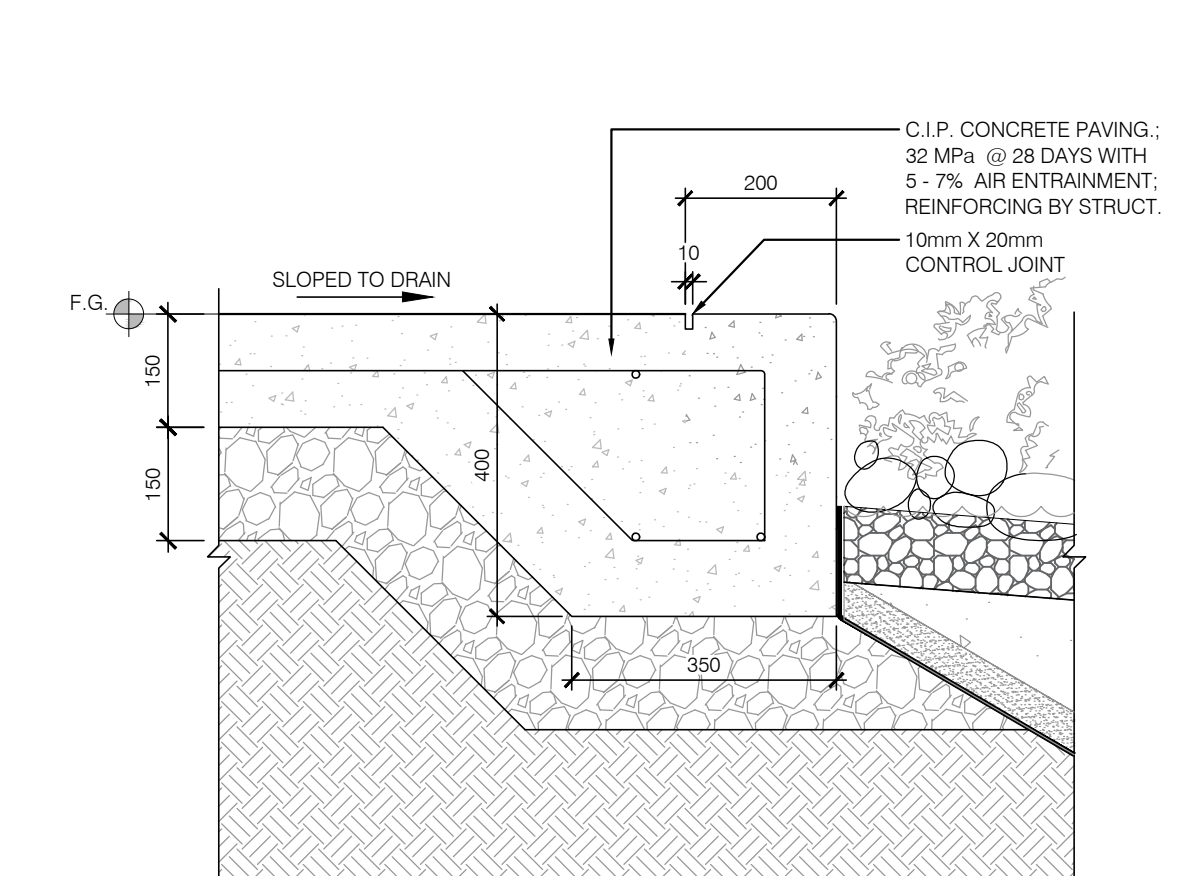
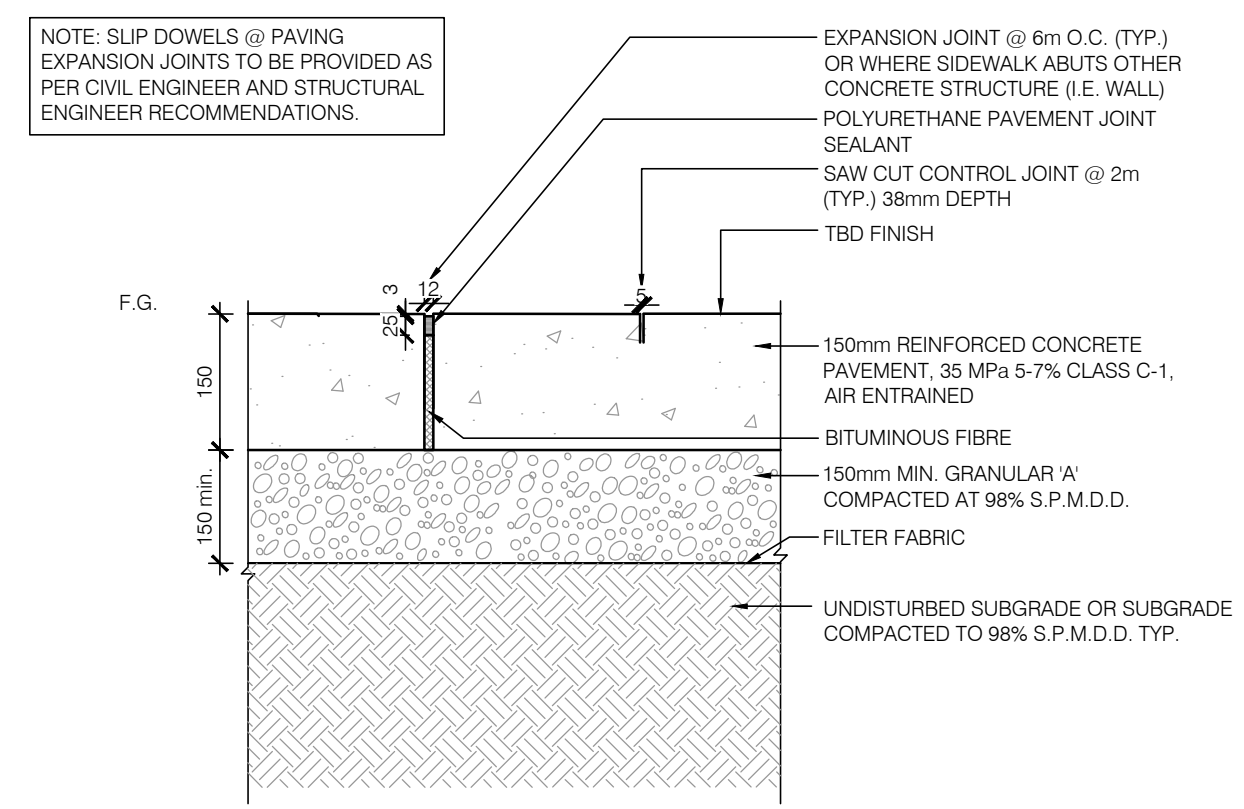


PROJECT
 CISCO OTTAWA CAMPUS MAB
 2000 Innovation Drive, Kanata, ON K2K 3E8

PROJECT NO: MAB.30298433
APPLICATION NO: PC2025-0127

DRAWN BY: ARCADIS
CHECKED BY: BJ
PROJECT MGR: BJ
APPROVED BY: NK

SHEET TITLE
 PLANTING PLAN
SHEET NUMBER L-200 **ISSUE** 1



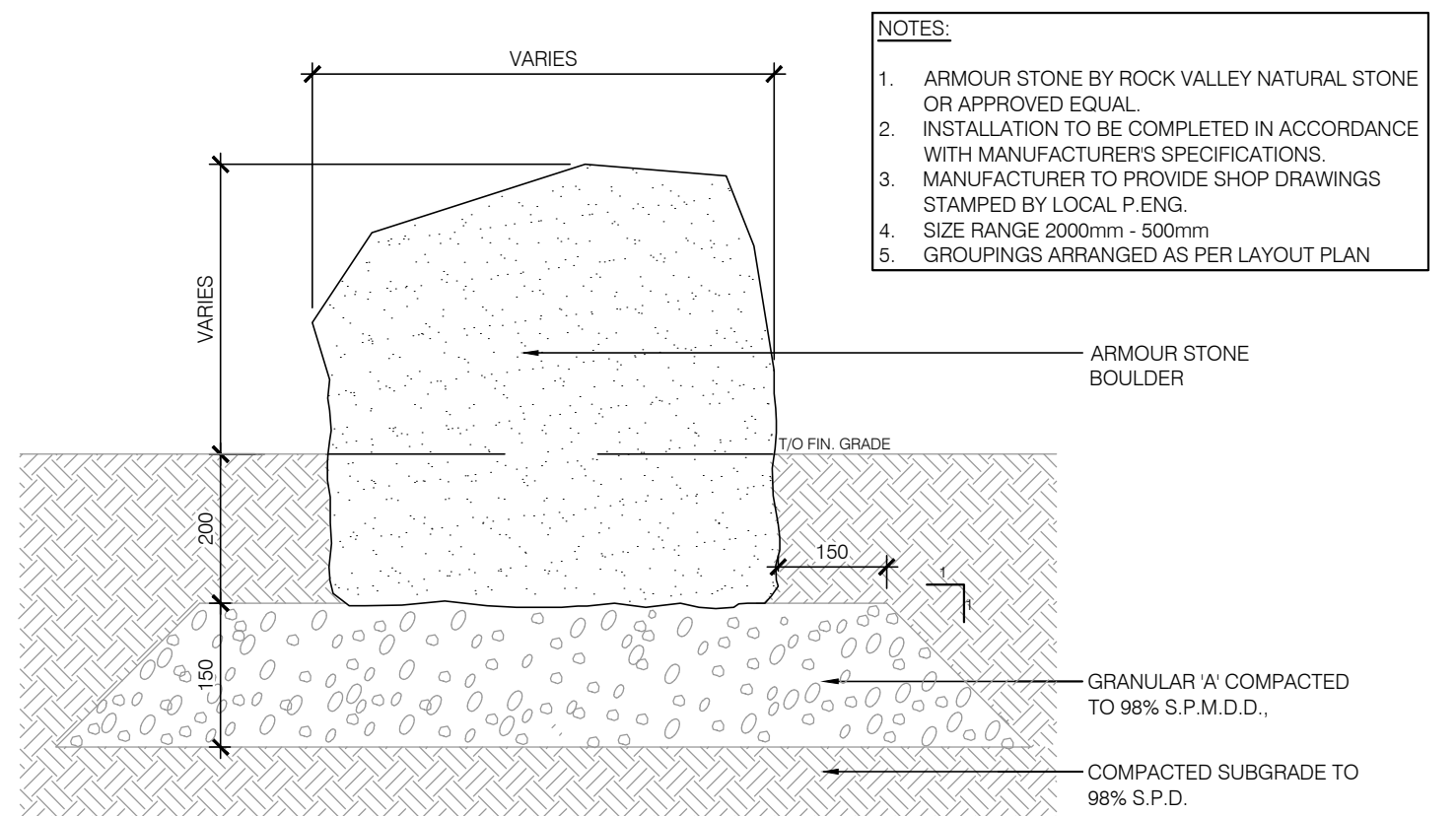
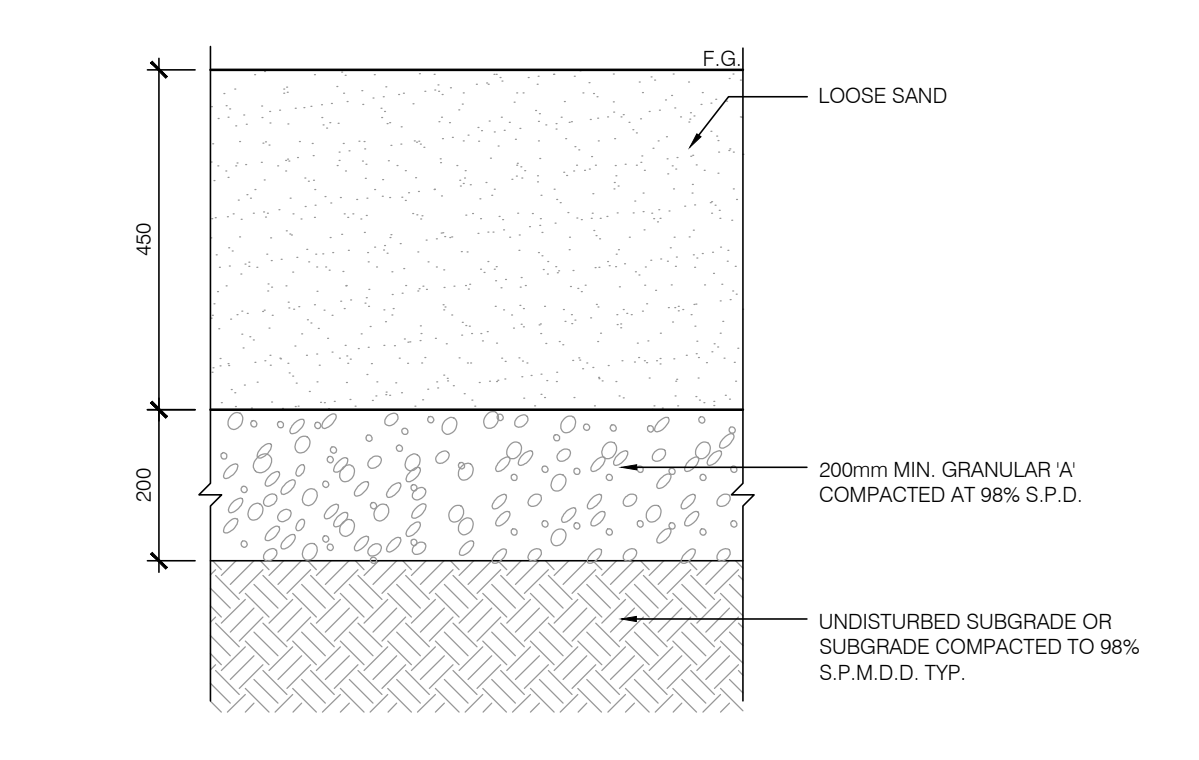
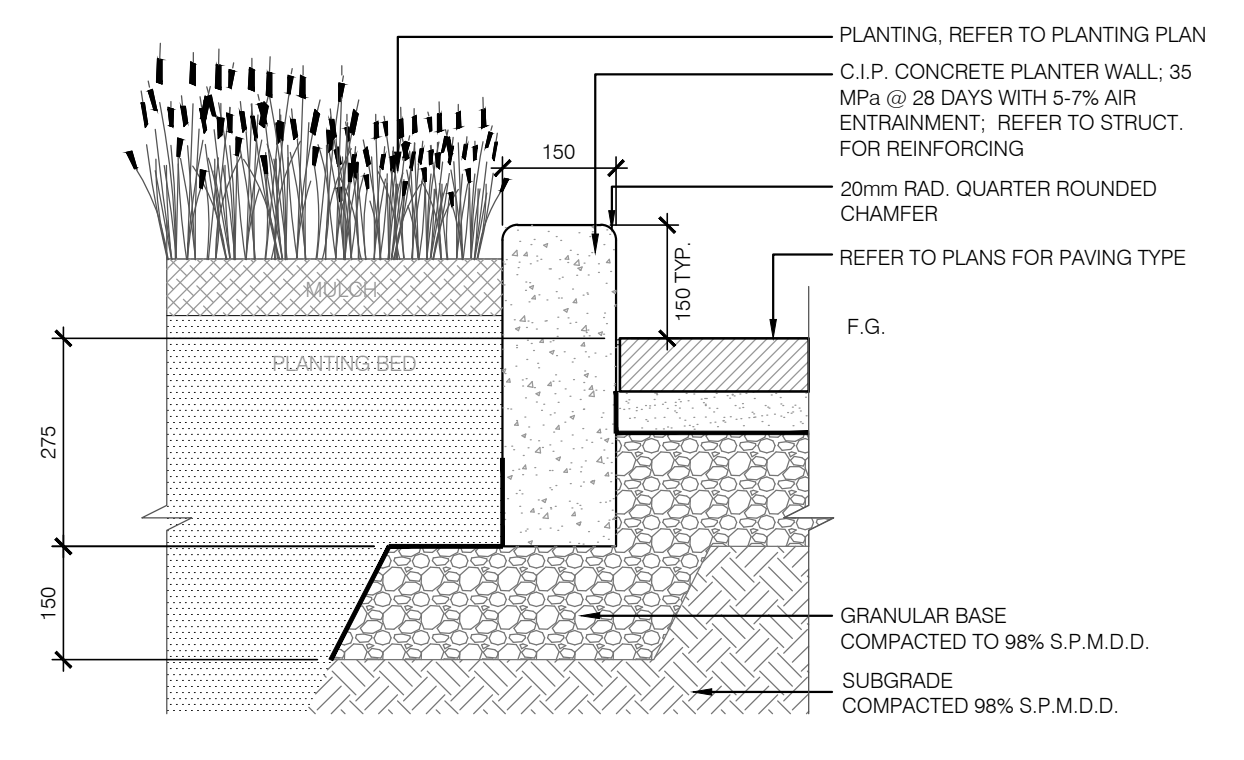
1 C.I.P. CONCRETE PAVING
L-500 1:10

2 C.I.P. CONCRETE EDGE
L-500 1:10

3 BOUND AGGREGATE PAVING
L-500 1:10

4 VEHICULAR LOAD CONCRETE UNIT PAVING
L-500 1:10

5 GRAVEL SURFACE
L-500 1:10



6 C.I.P. CONCRETE CURB AT PLANTERS
L-500 1:10

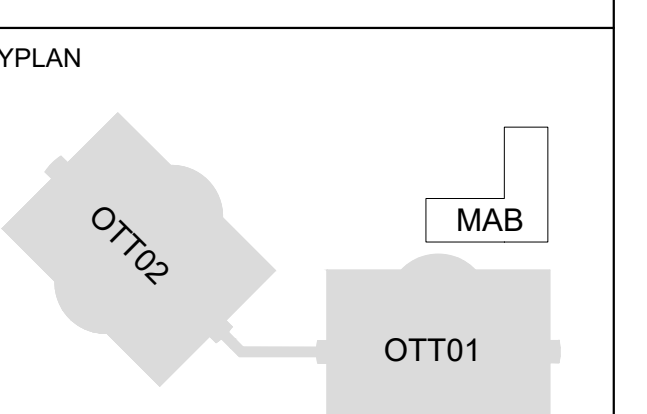
7 SAND VOLLEYBALL COURT
L-500 1:10

8 BOULDER (ARMOURSTONE)
L-500 1:20



COPYRIGHT
This drawing has been prepared solely for the intended use, thus any reproduction or distribution for any purpose other than authorized by Arcadis is forbidden. Written dimensions shall have precedence over scaled dimensions. Contractors shall verify and be responsible for all dimensions and conditions on the job, and Arcadis shall be informed of any variations from the dimensions and conditions shown on the drawing. Shop drawings shall be submitted to Arcadis for general conformance before proceeding with fabrication.

Arcadis Architects (Canada) Inc.



No.	DESCRIPTION	DATE
1	ISSUED FOR SPC #1	2025-12-12

CONSULTANTS

ARUP
47 Clarence Street, Suite 202,
Ottawa, ON, K1N 5D9

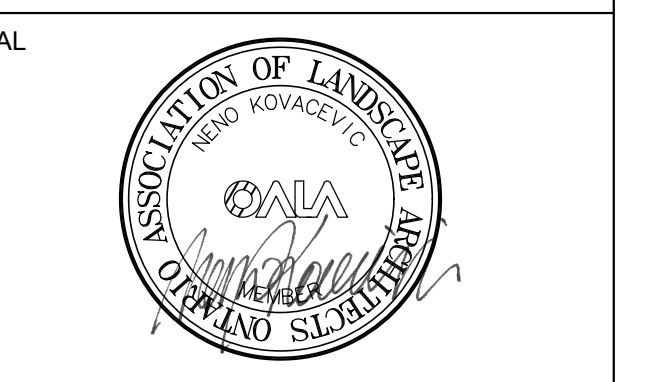
TEECOM
30 California Street
Suite 100
San Francisco, CA
94111
2016-07-2025

SENEZ CO
FIRE SCIENCE & ENGINEERING
93 Skyway Avenue, Suite 102
Toronto, ON, M9W 6R6

TOTAL OPENING CONSULTANTS
895 Don Mills Rd. Suite 900,
Toronto, ON M3C 1W3

CBRE
340 Albert Street, Suite 1900
Ottawa, ON, K1R 7Y6

Matrix
6131 Perth Street
Richmond, ON, K9A 2Z0



SPC PACKAGE NOT FOR CONSTRUCTION

PRIME CONSULTANT
ARCADIS
333 Preston Street - Suite 500
Ottawa ON K1S 5N4 Canada
tel 613 225 1311
www.arcadis.com

PROJECT
CISCO OTTAWA CAMPUS
MAB
2000 Innovation Drive,
Kanata, ON K2K 3E8

PROJECT NO.: MAB-30298433
APPLICATION NO.: PC2025-0127

DRAWN BY: ARCADIS
PROJECT MGR: BJ

CHECKED BY: BJ
APPROVED BY: NK

SHEET TITLE
LANDSCAPE DETAILS

SHEET NUMBER L-500
ISSUE 1

