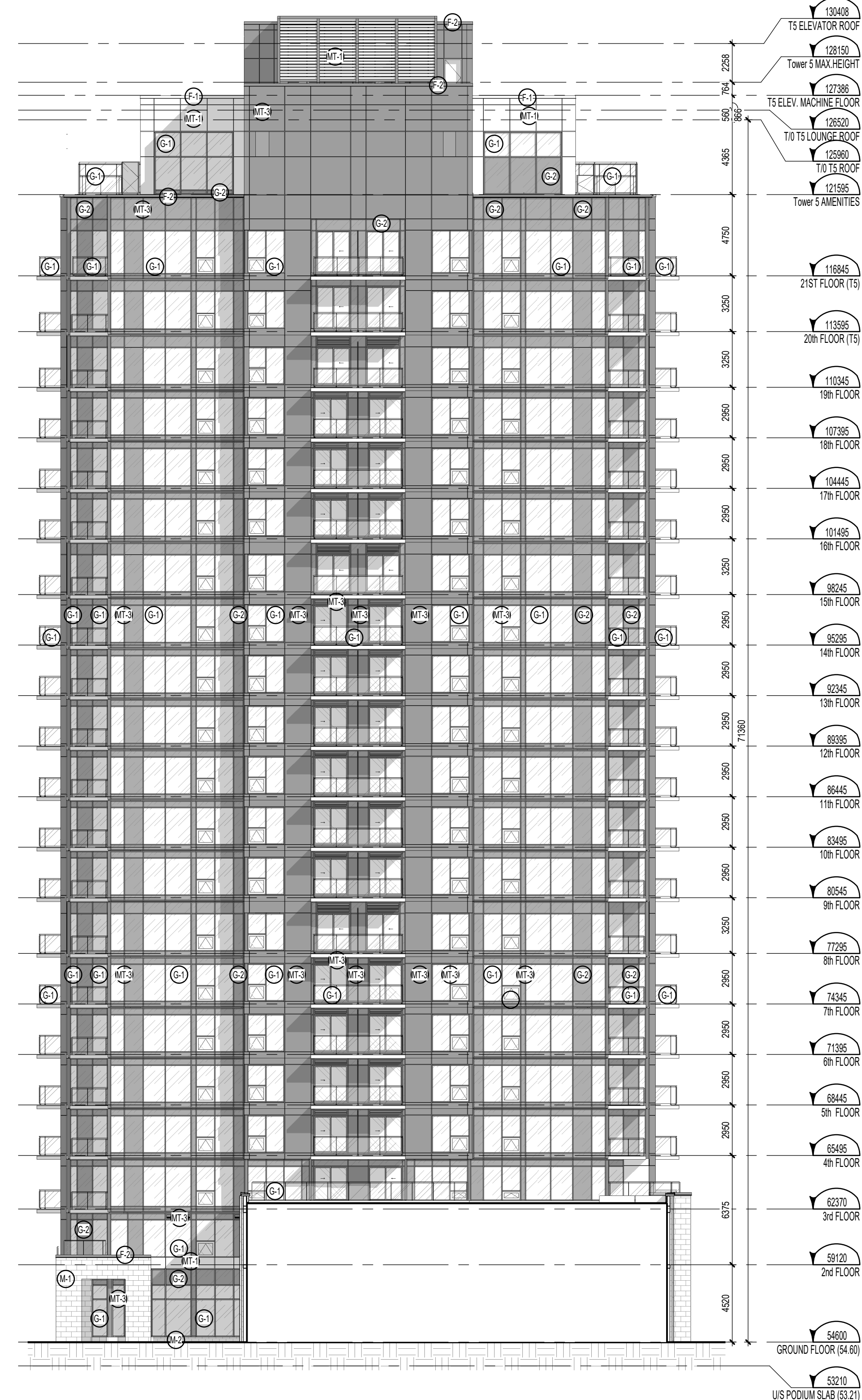


C:\Fishers Revit\Locaux\PT56_11597_ARC_INT_STUDY_R24_muyeyamaQ8PQR.rvt



MATERIALS LEGEND

- G-1 EXPOSED CONCRETE
- G-1 SOLARBAN 60 - MULLIONS TO BE CHARCOAL (MATCH T4)
- G-2 ALUMINUM SPANDREL PANEL - CHARCOAL 956072 + GC - 16072 + OC306 - OC306) OR FUSAIN
- G-3 PRIVACY SCREENS - TEMPERED AND FROSTED
- M-1 MASONRY VENEER - TYPE 1 (STONE, SHOULDRICE, COLOUR: PEARL WHITE - TAPESTRY (NO BEVEL) 590x290x90mm SEE STONE COURSING)
- M-2 MASONRY VENEER - TYPE 2 (STONE, SHOULDRICE, COLOUR: PEARL WHITE - TAPESTRY (NO BEVEL) 390x190x90mm SEE STONE COURSING)
- M-3 RESERVED
- MT-1 ALUMINUM PANEL - TYPE 1 (WHITE - STANDARD SERIES - DURANAR XL RAL 9016)
- MT-2 STEEL SIDING - TYPE 2 (CAMBRIDGE WHITE - VIOWEST - AD-300SR)
- MT-3 ALUMINUM - TYPE 3 (CHARCOAL - STANDARD SERIES - DURANAR XL PCNT78133)
- MT-4 ALUMINUM PERFORATED PANEL - 50% OPEN AREA, 3mm DIAMETER OPENINGS, STAGGERED CENTERS, 100mm SOLID PANEL PERIMETER, COLOUR TO MATCH ADJACENT PANELS
- MT-5 ALUMINUM - TYPE 5 (COPPER - STANDARD SERIES - DURANAR XL)
- B-1 BALCONY - (CLEAR GLAZING)
- B-2 SECURITY GLASS FOR BALCONY RAILING
- F-1 FLASHING - (WHITE)
- F-2 FLASHING - (CHARCOAL)

ABBREVIATION/SYMBOL LEGEND

- C.J. : CONTROL JOINT SEALANT COLOUR TO MATCH ADJACENT VENEER
- LL: PRIMED & PAINTED LOOSE LINTEL (COLOUR TO MATCH ADJACENT VENEER)
- S.A. : PRIMED & PAINTED SHELF ANGLE (COLOUR TO MATCH ADJACENT VENEER)
- S.S.A. : PRIMED & PAINTED SUSPENDED SHELF ANGLE (COLOUR TO MATCH ADJACENT VENEER)
- S.S. : SUPPORT STRUCTURE (OPENINGS OVER 300mm): STRUCTURAL STEEL HISS AND/OR SHELF ANGLE ABOVE WINDOW UNIT; SEE STRUCTURAL ENGINEER FOR TYPES, SPACING, DIMENSIONS, ANCHORAGE, LOCATIONS, ETC.

- SINGLE EXHAUST VENT *
- DOUBLE EXHAUST VENT *
- TRIPLE EXHAUST VENT *
- QUADRUPLE EXHAUST VENT *

* ALL EXHAUST VENT LOCATION TO BE VERIFIED AND COORDINATED WITH MECHANICAL ENGINEER

REFER TO WALL SECTIONS FOR BRICK COURSING. FOR OTHER BRICK SIZES AND TYPES, COURSING MUST BE ADAPTED TO THE STONE COURSING AND ROUGH OPENINGS AS INDICATED IN THESE DRAWINGS.

TOWER 5 - EAST ELEVATION
1:200

NOTES GÉNÉRALES / General Notes

- Ces documents d'architecture sont la propriété exclusive de NEUF architecte(s) et ne peuvent être utilisés, reproduits ou copiés sans autorisation écrite préalable. / These architectural documents are the exclusive property of NEUF architecte(s) and cannot be used, copied or reproduced without written pre-authorization.
- Les dimensions apparaissant aux documents doivent être vérifiées par l'entrepreneur avant le début des travaux. / All dimensions which appear on the documents must be verified by the contractor before to start the work.
- Veuillez aviser l'architecte de toute dimension en erreur et/ou divergences entre ces documents et ceux des autres professionnels. / The architect must be notified of all errors, omissions and discrepancies between these documents and those of the others professionals.
- Les dimensions sur ces documents doivent être lues et non mesurées. / The dimensions on these documents must be read and not measured.

GÉOTECHNIQUE / Geotechnical
Paterson Group
154 Colomade Road South
Ottawa, Ontario K2E 7J5

MÉCANIQUE / Mechanical
Goodkey, Weedmark & Associates Ltd.
689 Woodward Drive
Ottawa, Ontario K2C 3R8

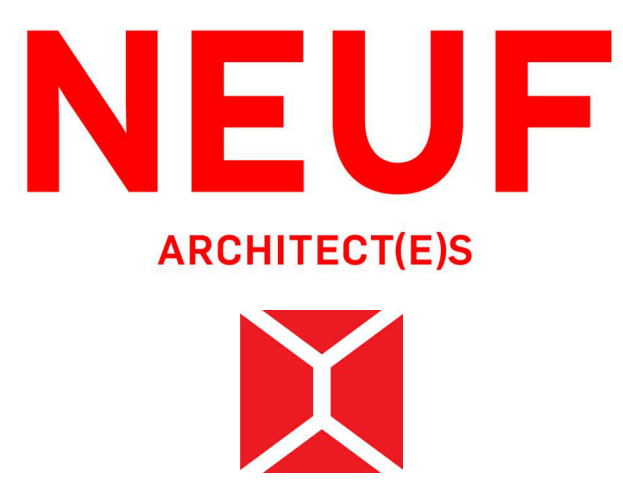
STRUCTURE / Structure
Leroux Cyr
500 boul. Cochr. Est, bureau 306
Montréal, Québec H3L 3P9

ARCHITECTURE DE PAYSAGE / Landscape Architect
Lovstek Consultants Inc.
5871 High Crescent
Ottawa, Ontario K2A 2W0

CIVIL / Civil
NOVATECH
240 Michael Cowland Drive, Suite 200, Ottawa, ON K2M 1P6
T 613 254 9643 novatech-eng.com

ARCHITECTES / Architect
NEUF architecte(s)
630, St-Jacques, Rensselaire C. 32e étage, Montréal QC H3B 1S6
T 514 847 1117 NEUFArchitectes.com

SCEAU / Seal



CLIENT / Client
brigit

OUVRAGE / Project
PETRIE'S LANDING I - TOWER 5/6

EMPLACEMENT / Location: 8910 & 8920 JEANNE-D'ARC BLVD ORLEANS, ON
NO PROJET No: 11597/12191

NO	REVISION	DATE (aa-mm-jj)
A	ISSUED FOR SPA REV5	2019-09-04
B	ISSUED FOR SPA REV6	2021-11-02
C	ISSUED FOR CITY COMMENTS REV6	2021-12-10
D	RE-ISSUED FOR SPA REV6	2022-02-28
E	FOR SPA Review	2024-08-26
F	FOR SPA REISSUE REV7	2025-10-30

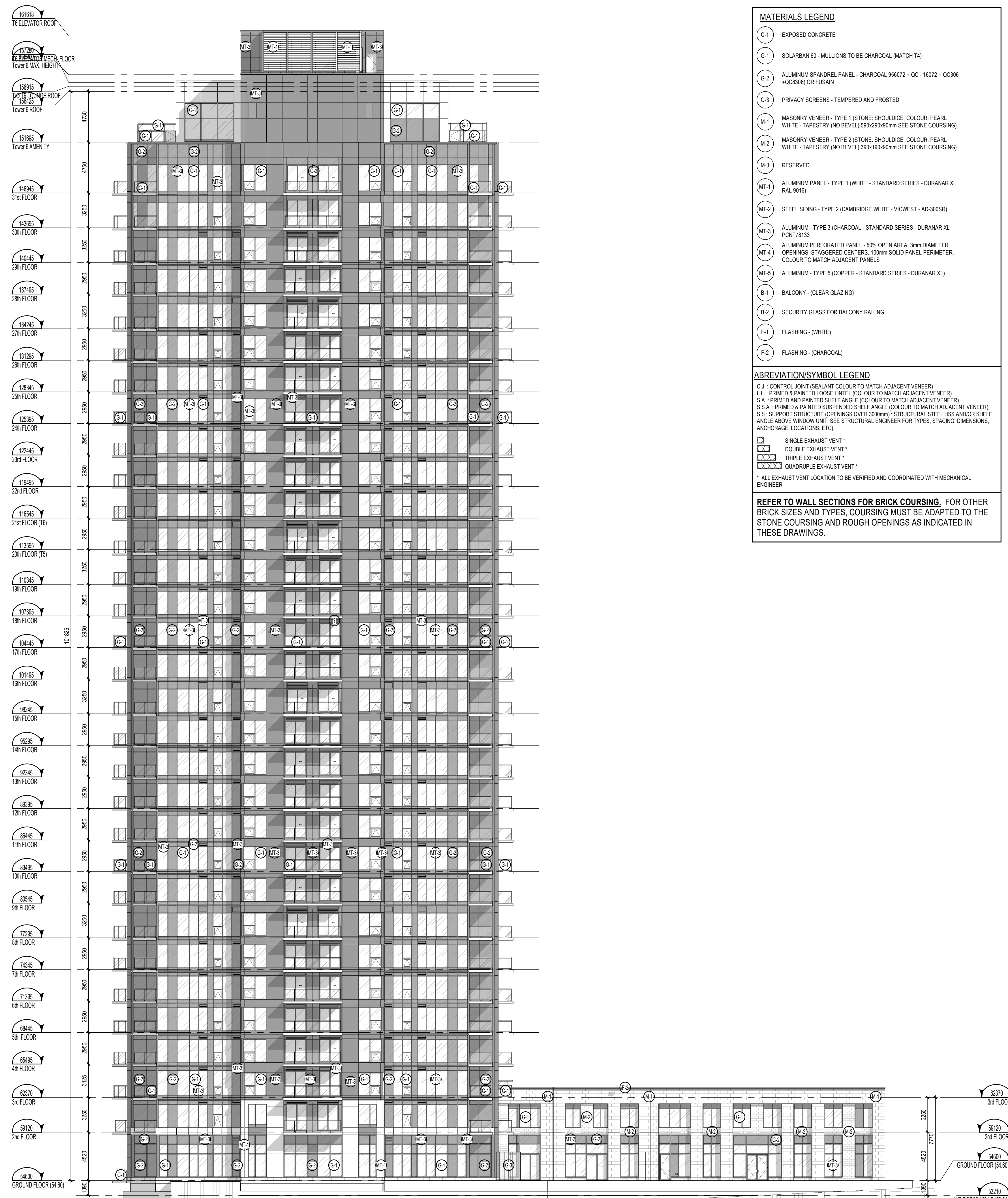
DESSINÉ PAR / Drawn by: AV
VERIFIÉ PAR / Checked: MU

DATE (aa.mm.jj): 09/27/24
ÉCHELLE / Scale: As

TITRE DU DESSIN / Drawing Title: EAST ELEVATION T5

REVISION / Revision: F
NO. DESSIN / Dwg Number: A401a

C:\Fishers Revit Local\PT56_11597_ARC_INT_STUDY_R24_muyeyamaQ8PQR.rvt



MATERIALS LEGEND

- G-1 EXPOSED CONCRETE
- G-1 SOLARBAN 60 - MULLIONS TO BE CHARCOAL (MATCH T4)
- G-2 ALUMINUM SPANDREL PANEL - CHARCOAL 956072 + GC - 16072 + OC306 - OC306 OR FUSAIN
- G-3 PRIVACY SCREENS - TEMPERED AND FROSTED
- M-1 MASONRY VENEER - TYPE 1 (STONE, SHOULDRICE, COLOUR: PEARL WHITE - TAPESTRY (NO BEVEL) 590x290x90mm SEE STONE COURSING)
- M-2 MASONRY VENEER - TYPE 2 (STONE, SHOULDRICE, COLOUR: PEARL WHITE - TAPESTRY (NO BEVEL) 590x190x90mm SEE STONE COURSING)
- M-3 RESERVED
- MT-1 ALUMINUM PANEL - TYPE 1 (WHITE - STANDARD SERIES - DURANAR XL RAL 9016)
- MT-2 STEEL SIDING - TYPE 2 (CAMBRIDGE WHITE - VIVEST - AD-300SR)
- MT-3 ALUMINUM - TYPE 3 (CHARCOAL - STANDARD SERIES - DURANAR XL PONT78133)
- MT-4 ALUMINUM PERFORATED PANEL - 50% OPEN AREA, 3mm DIAMETER OPENINGS, STAGGERED CENTERS, 100mm SOLID PANEL PERIMETER, COLOUR TO MATCH ADJACENT PANELS
- MT-5 ALUMINUM - TYPE 5 (COPPER - STANDARD SERIES - DURANAR XL)
- B-1 BALCONY - (CLEAR GLAZING)
- B-2 SECURITY GLASS FOR BALCONY RAILING
- F-1 FLASHING - (WHITE)
- F-2 FLASHING - (CHARCOAL)

ABBREVIATION/SYMBOL LEGEND

C.J. - CONTROL JOINT (SEALANT COLOUR TO MATCH ADJACENT VENEER)
 L.L. - PRIMED & PAINTED LOOSE LINTEL (COLOUR TO MATCH ADJACENT VENEER)
 S.A. - PRIMED AND PAINTED SHELF ANGLE (COLOUR TO MATCH ADJACENT VENEER)
 S.S.A. - PRIMED & PAINTED SUSPENDED SHELF ANGLE (COLOUR TO MATCH ADJACENT VENEER)
 S.S. - SUPPORT STRUCTURE (OPENINGS OVER 300mm) - STRUCTURAL STEEL HISS AND/OR SHELF ANGLE ABOVE WINDOW UNIT; SEE STRUCTURAL ENGINEER FOR TYPES, SPACING, DIMENSIONS, ANCHORAGE, LOCATIONS, ETC.)

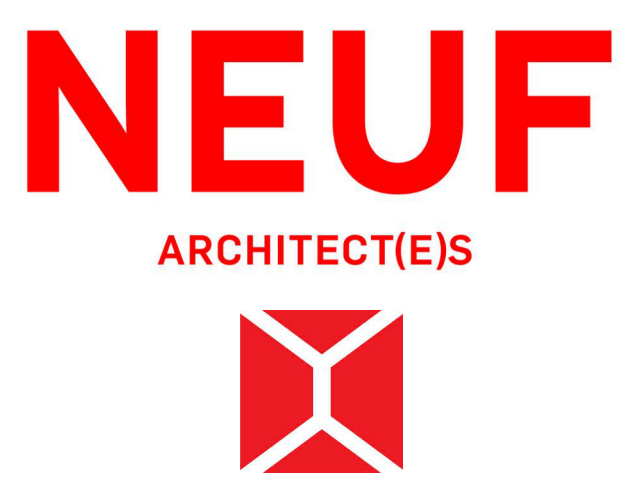
- [Symbol] SINGLE EXHAUST VENT *
- [Symbol] DOUBLE EXHAUST VENT *
- [Symbol] TRIPLE EXHAUST VENT *
- [Symbol] QUADRUPLE EXHAUST VENT *

* ALL EXHAUST VENT LOCATION TO BE VERIFIED AND COORDINATED WITH MECHANICAL ENGINEER

REFER TO WALL SECTIONS FOR BRICK COURSING. FOR OTHER BRICK SIZES AND TYPES, COURSING MUST BE ADAPTED TO THE STONE COURSING AND ROUGH OPENINGS AS INDICATED IN THESE DRAWINGS.

TOWER 6 EAST ELEVATION
1: 200

- NOTES GÉNÉRALES / General Notes**
- Ces documents d'architecture sont la propriété exclusive de NEUF architecte(s) et ne peuvent être utilisés, reproduits ou copiés sans autorisation écrite préalable. / These architectural documents are the exclusive property of NEUF architecte(s) and cannot be used, copied or reproduced without written pre-authorization.
 - Les dimensions apparaissant aux documents doivent être vérifiées par l'entrepreneur avant le début des travaux. / All dimensions which appear on the documents must be verified by the contractor before to start the work.
 - Veuillez aviser l'architecte de toute dimension eneur et/ou divergences entre ces documents et ceux des autres professionnels. / The architect must be notified of all errors, omissions and discrepancies between these documents and those of the others professionals.
 - Les dimensions sur ces documents doivent être lues et non mesurées. / The dimensions on these documents must be read and not measured.
- GÉOTECHNIQUE Geotechnical**
Paterson Group
 154 Colomade Road South
 Ottawa, Ontario K2E 7J5
- MÉCANIQUE Mechanical**
Goodkey, Weedmark & Associates Ltd.
 689 Woodmont Drive
 Ottawa, Ontario K2C 3R8
- STRUCTURE Structure**
Leroux Cyr
 500 boul. Cochrain Est, bureau 306
 Montréal, Québec H3L 3P9
- ARCHITECTURE DE PAYSAGE Landscape Architect**
Lovstek Consultants Inc.
 5971 High Crescent
 Ottawa, Ontario K2A 2W0
- CIVIL Civil**
NOVATECH
 240 Michael-Cowpland Drive, Suite 200, Ottawa, ON K2M 1P6
 T 613 254 9643 novatech-eng.com
- ARCHITECTES Architect**
NEUF architecte(s)
 630, St-Jacques, Rensé-Lévesque C. 32e étage, Montréal QC H3B 1S6
 T 514 847 1117 NEUFarchitectes.com
- SCEAU / Seal**



CLIENT Client

OUVRAGE Project
PETRIE'S LANDING I - TOWER 5/6

EMPLACEMENT Location NO PROJET No.
 8910 & 8920 11597/12191
 JEANNE-D'ARC BLVD
 ORLEANS, ON

NO REVISION DATE (aa-mm-jj)

A	ISSUED FOR SPA REV5	2019-09-04
B	ISSUED FOR SPA REV6	2021-11-02
C	ISSUED FOR CITY COMMENTS REV6	2021-12-10
D	RE-ISSUED FOR SPA REV6	2022-02-28
E	RE-ISSUED FOR TENDER	2023-03-10
F	FOR SPA Review	2024-08-26
G	FOR SPA REISSUE REV7	2025-10-30

DESSIN PAR Drawn by
 MU

DATE (aa.mm.jj)
 09/27/24

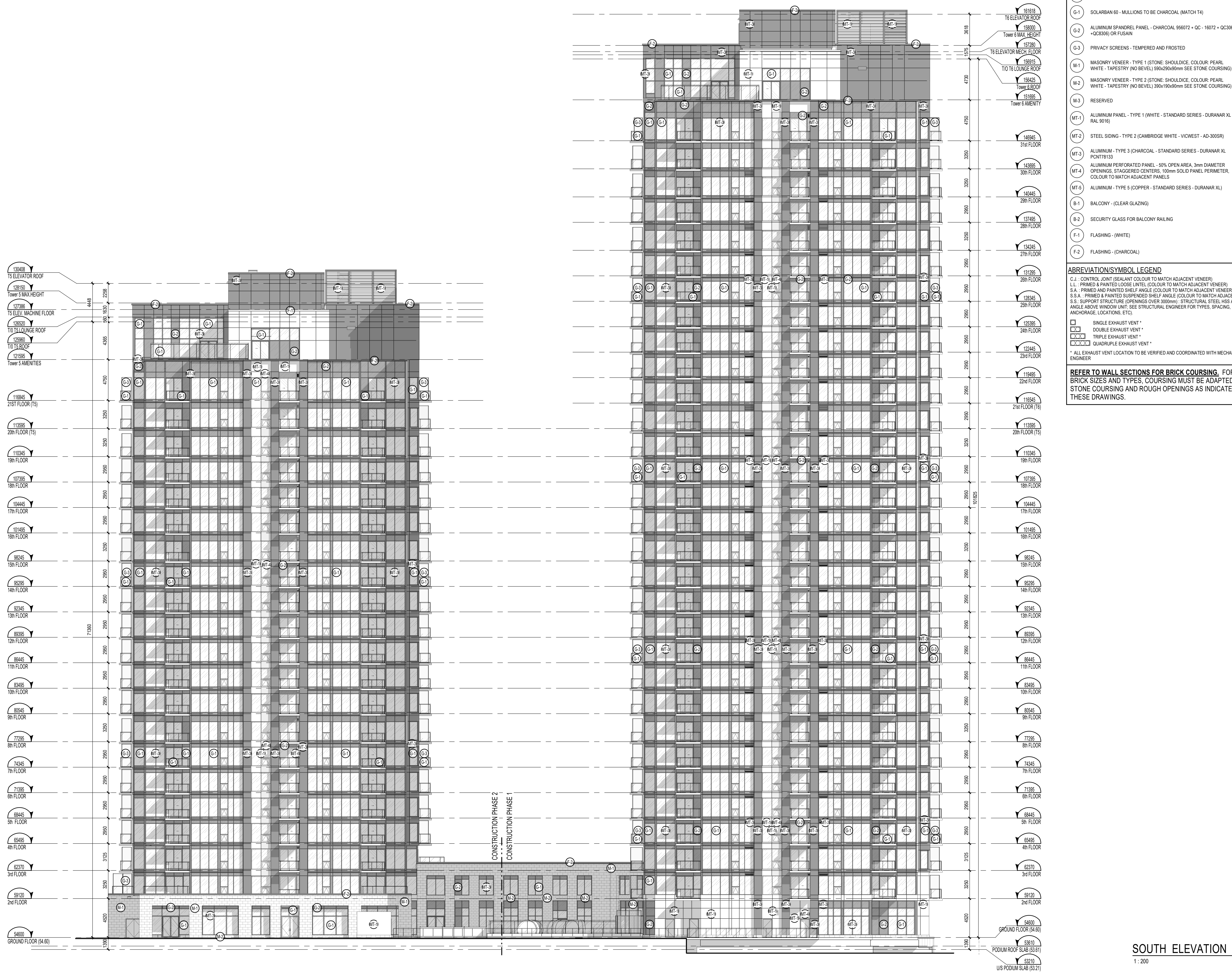
TITRE DU DESSIN Drawing Title
EAST ELEVATION T6

VERIFIÉ PAR Checked by
 MU

ÉCHELLE Scale
 As indicated

REVISION Revision NO. DESSIN Dwg Number
G A401b.

C:\Fishers Revit\Local\PT56_11597_ARC_INT_STUDY_R24_muyeyama08PQR.rvt



SOUTH ELEVATION
1 : 200

NOTES GÉNÉRALES / General Notes

- Ces documents d'architecture sont la propriété exclusive de NEUF architecte(s) et ne peuvent être utilisés, reproduits ou copiés sans autorisation écrite préalable. / These architectural documents are the exclusive property of NEUF architecte(s) and cannot be used, copied or reproduced without written pre-authorization.
- Les dimensions apparaissant aux documents doivent être vérifiées par l'entrepreneur avant le début des travaux. / All dimensions which appear on the documents must be verified by the contractor before to start the work.
- Veuillez aviser l'architecte de toute dimension eneur et/ou divergences entre ces documents et ceux des autres professionnels. / The architect must be notified of all errors, omissions and discrepancies between these documents and those of the others professionals.
- Les dimensions sur ces documents doivent être lues et non mesurées. / The dimensions on these documents must be read and not measured.

GÉOTECHNIQUE Geotechnical
Paterson Group
154 Colomade Road South
Ottawa, Ontario K2E 7J5

MÉCANIQUE Mechanical
Goodkey, Weedmark & Associates Ltd.
1599 Woodmont Drive
Ottawa, Ontario K2C 3R8

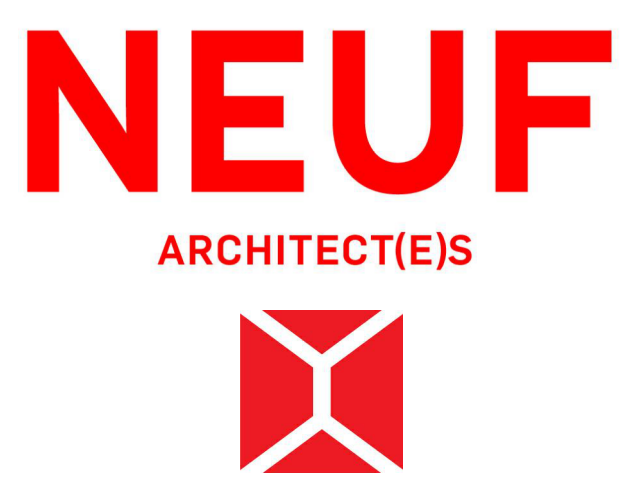
STRUCTURE Structure
Leroux Cyr
500 boul. Cochr. Est, bureau 306
Montréal, Québec H3L 3P9

ARCHITECTURE DE PAYSAGE Landscape Architect
Levstek Consultants Inc.
5971 High Crescent
Ottawa, Ontario K2A 2W0

CIVIL Civil
NOVATECH
240 Michael-Cowpland Drive, Suite 200, Ottawa, ON K2M 1P6
1 813 254 9643 novatech-eng.com

ARCHITECTES Architect
NEUF Architecte(s)
630, St-Jacques, Montréal, Québec H3B 1S6
T 514 847 1111 NEUFarchitectes.com

SCEAU / Seal



CLIENT Client
brigit

OUVRAGE Project
PETRIE'S LANDING I - TOWER 5/6

EMPLACEMENT Location NO PROJET No.
8910 & 8920 11597/12191
JEANNE-D'ARC BLVD
ORLEANS, ON

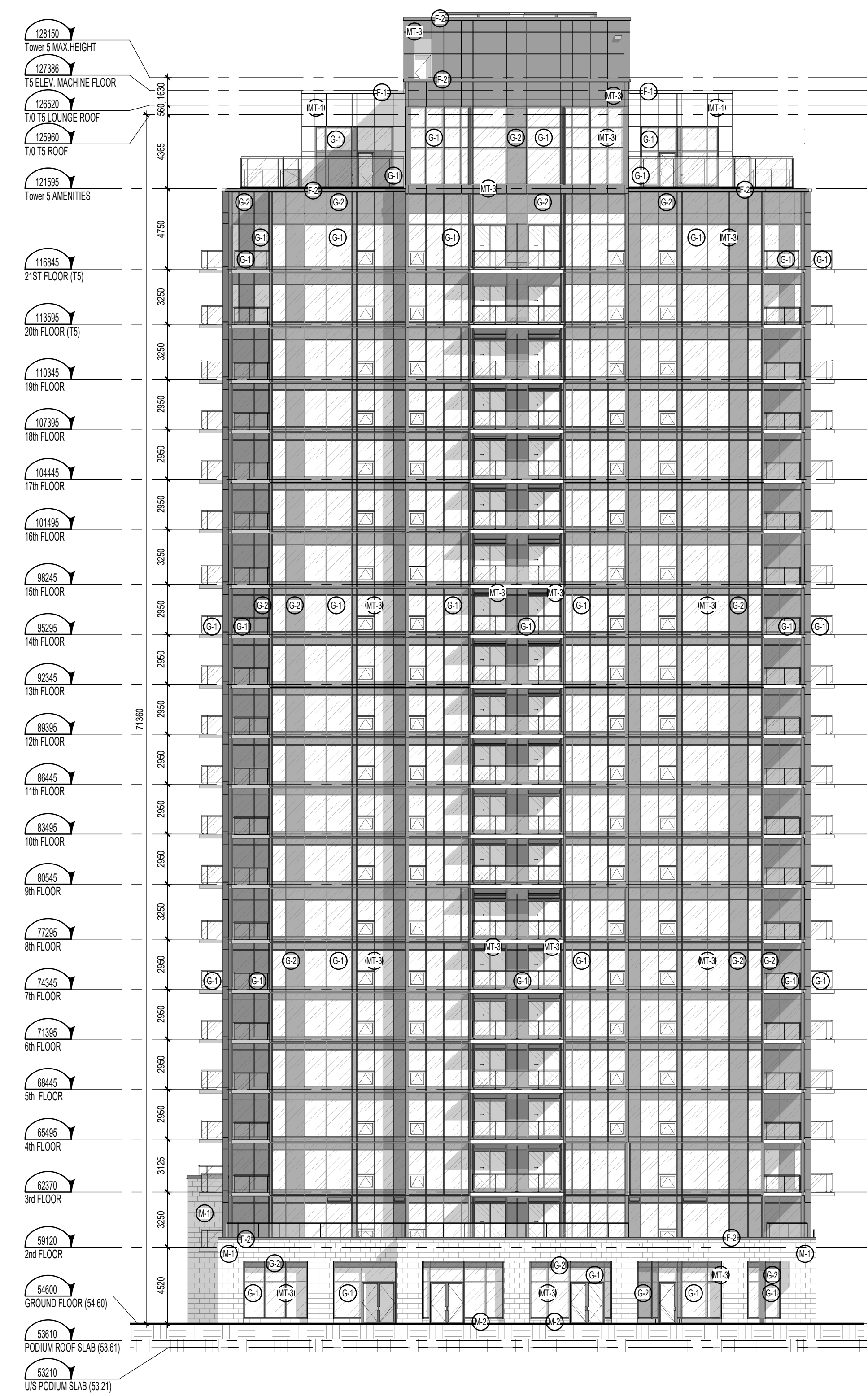
NO	REVISION	DATE (aa-mm-jj)
A	ISSUED FOR SPA REV5	2019-09-04
B	ISSUED FOR SPA REV6	2021-11-02
C	ISSUED FOR CITY COMMENTS REV6	2021-12-10
D	RE-ISSUED FOR SPA REV6	2022-02-28
E	RE-ISSUED FOR TENDER	2023-03-10
F	FOR SPA Review	2024-08-26
G	FOR SPA REISSUE REV7	2025-10-30

DESSINÉ PAR Drawn by AV **VERIFIÉ PAR Checked** MU
DATE (aa.mm.jj) 09/27/24 **ÉCHELLE Scale** As
TITRE DU DESSIN Drawing Title indicated

SOUTH ELEVATION SPA

REVISION Revision **NO. DESSIN Dwg Number**
G A402.

C:\Fishers Revit\Locaux\PT56_11597_ARC_INT_STUDY_R24_muyeyama08PQR.rvt



TOWER 5 - WEST ELEVATION
1:200
1
A403a

MATERIALS LEGEND

- G-1 EXPOSED CONCRETE
- G-1 SOLARBAN 60 - MULLIONS TO BE CHARCOAL (MATCH T4)
- G-2 ALUMINUM SPANREL PANEL - CHARCOAL 956072 + GC - 16072 + OC306 - OC306) OR FUSAIN
- G-3 PRIVACY SCREENS - TEMPERED AND FROSTED
- M-1 MASONRY VENEER - TYPE 1 (STONE, SHOULDICE, COLOUR: PEARL WHITE - TAPESTRY (NO BEVEL) 590x290x90mm SEE STONE COURSING)
- M-2 MASONRY VENEER - TYPE 2 (STONE, SHOULDICE, COLOUR: PEARL WHITE - TAPESTRY (NO BEVEL) 590x190x90mm SEE STONE COURSING)
- M-3 RESERVED
- MT-1 ALUMINUM PANEL - TYPE 1 (WHITE - STANDARD SERIES - DURANAR XL RAL 9016)
- MT-2 STEEL SIDING - TYPE 2 (CAMBRIDGE WHITE - VICWEST - AD-300SR)
- MT-3 ALUMINUM - TYPE 3 (CHARCOAL - STANDARD SERIES - DURANAR XL PONT78133)
- MT-4 ALUMINUM PERFORATED PANEL - 50% OPEN AREA, 3mm DIAMETER OPENINGS, STAGGERED CENTERS, 100mm SOLID PANEL PERIMETER, COLOUR TO MATCH ADJACENT PANELS
- MT-5 ALUMINUM - TYPE 5 (COPPER - STANDARD SERIES - DURANAR XL)
- B-1 BALCONY - (CLEAR GLAZING)
- B-2 SECURITY GLASS FOR BALCONY RAILING
- F-1 FLASHING - (WHITE)
- F-2 FLASHING - (CHARCOAL)

ABBREVIATION/SYMBOL LEGEND

C.J. : CONTROL JOINT (SEALANT COLOUR TO MATCH ADJACENT VENEER)
 LL: PRIMED & PAINTED LOOSE LINTEL (COLOUR TO MATCH ADJACENT VENEER)
 S.A. : PRIMED & PAINTED SHELF ANGLE (COLOUR TO MATCH ADJACENT VENEER)
 S.S. : SUPPORT STRUCTURE (OPENINGS OVER 300mm): STRUCTURAL STEEL HISS AND/OR SHELF ANGLE ABOVE WINDOW UNIT; SEE STRUCTURAL ENGINEER FOR TYPES, SPACING, DIMENSIONS, ANCHORAGE, LOCATIONS, ETC.)

- SINGLE EXHAUST VENT *
- DOUBLE EXHAUST VENT *
- TRIPLE EXHAUST VENT *
- QUADRUPLE EXHAUST VENT *

* ALL EXHAUST VENT LOCATION TO BE VERIFIED AND COORDINATED WITH MECHANICAL ENGINEER

REFER TO WALL SECTIONS FOR BRICK COURSING. FOR OTHER BRICK SIZES AND TYPES, COURSING MUST BE ADAPTED TO THE STONE COURSING AND ROUGH OPENINGS AS INDICATED IN THESE DRAWINGS.

NOTES GÉNÉRALES / General Notes

1. Ces documents d'architecture sont la propriété exclusive de NEUF architecte(s) et ne peuvent être utilisés, reproduits ou copiés sans autorisation écrite préalable. / These architectural documents are the exclusive property of NEUF architecte(s) and cannot be used, copied or reproduced without written pre-authorization.
2. Les dimensions apparaissant aux documents doivent être vérifiées par l'entrepreneur avant le début des travaux. / All dimensions which appear on the documents must be verified by the contractor before to start the work.
3. Veuillez aviser l'architecte de toute dimension en erreur et/ou divergences entre ces documents et ceux des autres professionnels. / The architect must be notified of all errors, omissions and discrepancies between these documents and those of the others professionals.
4. Les dimensions sur ces documents doivent être lues et non mesurées. / The dimensions on these documents must be read and not measured.

GEOTECHNIQUE Geotechnical
Paterson Group
 154 Colomade Road South
 Ottawa, Ontario K2E 7J5

MÉCANIQUE Mechanical
Goodkey, Weedmark & Associates Ltd.
 689 Woodmont Drive
 Ottawa, Ontario K2C 3R8

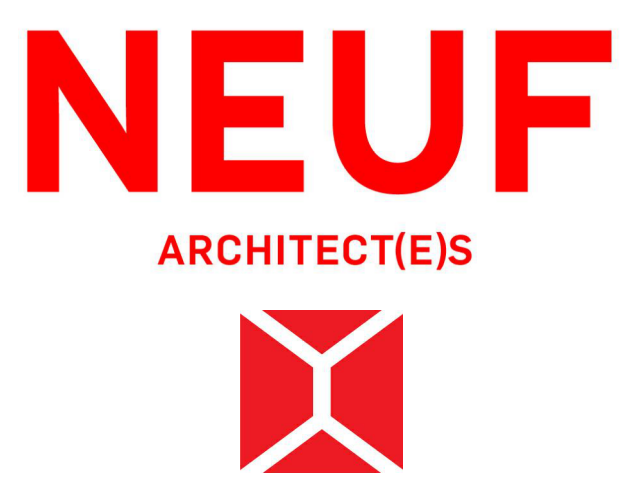
STRUCTURE Structure
Leroux Cyr
 500 boul. Cochr. Est, bureau 306
 Montréal, Québec H3L 3P9

ARCHITECTURE DE PAYSAGE Landscape Architect
Lovstek Consultants Inc.
 5871 Hugh Crescent
 Ottawa, Ontario K2A 2W0

CIVIL Civil
NOVATECH
 240 Michael Cowland Drive, Suite 200, Ottawa, ON K2M 1P6
 1 813 254 9643 novatech-eng.com

ARCHITECTES Architect
NEUF architecte(s)
 630, boul. René-Lévesque O. 32e étage, Montréal QC H3B 1S6
 T 514 847 1117 NEUFArchitectes.com

SCEAU / Seal



CLIENT Client

OUVRAGE Project
PETRIE'S LANDING I - TOWER 5/6

EMPLACEMENT Location NO PROJET No
8910 & 8920 11597/12191
JEANNE-D'ARC BLVD
ORLEANS, ON

NO	REVISION	DATE (aa-mm-jj)
A	ISSUED FOR SPA REV5	2019-09-04
B	ISSUED FOR SPA REV6	2021-11-02
C	ISSUED FOR CITY COMMENTS REV6	2021-12-10
D	RE-ISSUED FOR SPA REV6	2022-02-28
E	RE-ISSUED FOR TENDER	2023-03-10
F	FOR SPA Review	2024-08-26
G	FOR SPA REISSUE REV7	2025-10-30

DESSINÉ PAR Drawn by
MU

VERIFIÉ PAR Checked
MU

DATE (aa.mm.jj)
09/27/24

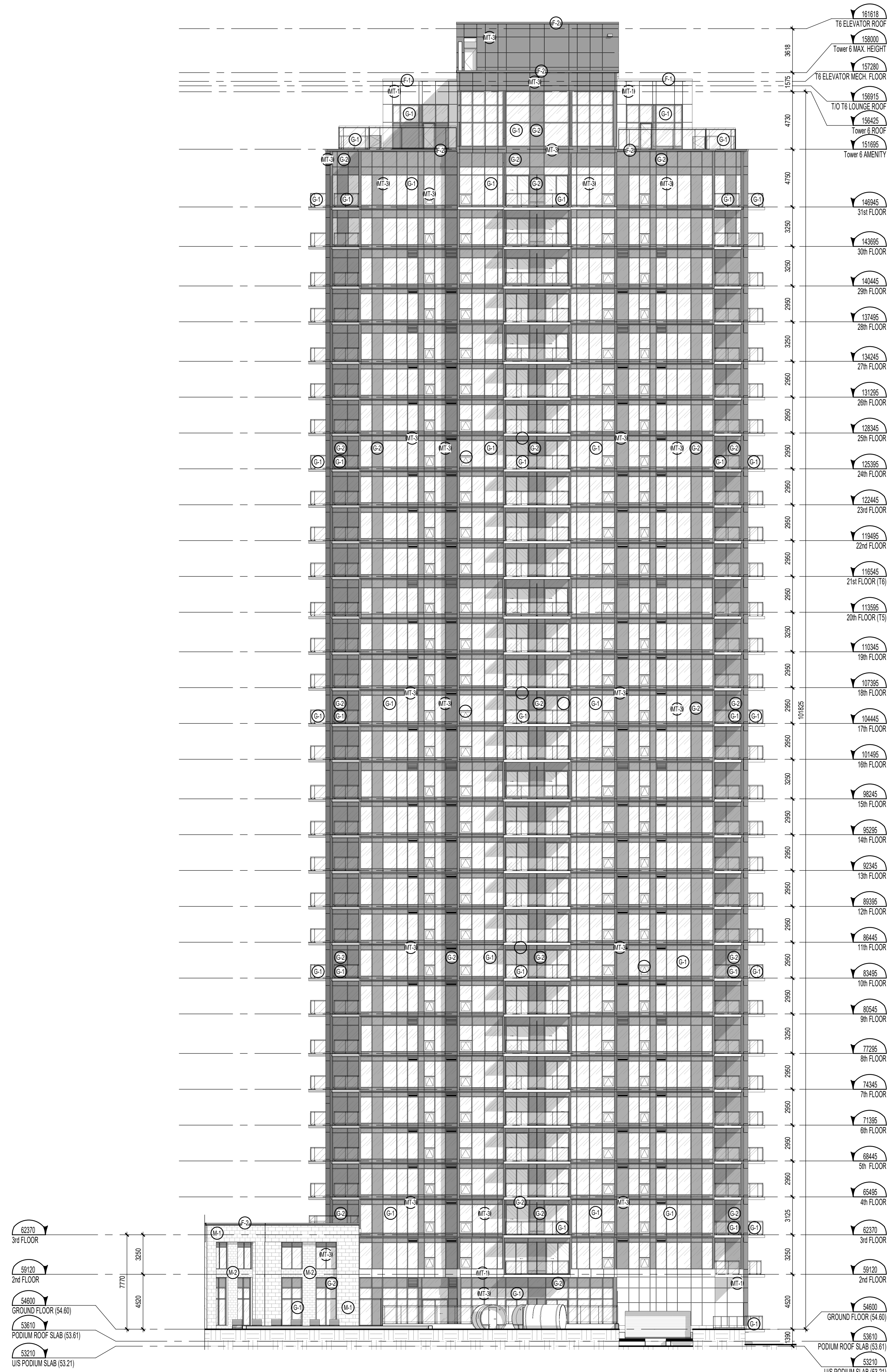
ÉCHELLE Scale
As

TITRE DU DESSIN Drawing Title
indicated

WEST ELEVATION T5

REVISION Revision NO. DESSIN Dwg Number
G A403a.

C:\Fishers Revit\Locaux\PT56_11597_ARC_INT_STUDY_R24_muyeyama08PQR.rvt



TOWER 6 - WEST ELEVATION
1:200

NOTES GÉNÉRALES / General Notes

- Ces documents d'architecture sont la propriété exclusive de NEUF architecte et ne peuvent être utilisés, reproduits ou copiés sans autorisation écrite préalable. / These architectural documents are the exclusive property of NEUF architecte and cannot be used, copied or reproduced without written pre-authorization.
- Les dimensions apparaissant aux documents doivent être vérifiées par l'entrepreneur avant le début des travaux. / All dimensions which appear on the documents must be verified by the contractor before to start the work.
- Veuillez aviser l'architecte de toute dimension erreur et/ou divergence entre ces documents et ceux des autres professionnels. / The architect must be notified of all errors, omissions and discrepancies between these documents and those of the others professionals.
- Les dimensions sur ces documents doivent être lues et non mesurées. / The dimensions on these documents must be read and not measured.

GÉOTECHNIQUE Geotechnical
Paterson Group
154 Colomade Road South
Ottawa, Ontario K2E 7J5

MÉCANIQUE Mechanical
Goodkey, Weedmark & Associates Ltd.
1689 Woodmont Drive
Ottawa, Ontario K2C 3R8

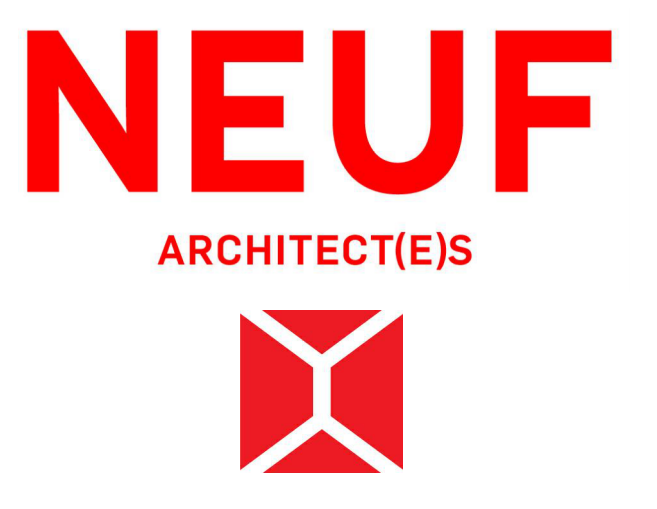
STRUCTURE Structure
Leroux Cyr
500 boul. Ouelin Est, bureau 306
Montréal, Québec H3L 3P9

ARCHITECTURE DE PAYSAGE Landscape Architect
Lovstek Consultants Inc.
5871 Hugh Crescent
Ottawa, Ontario K1A 2W0

CIVIL Civil
NOVATECH
240 Michael-Cowpland Drive, Suite 200, Ottawa, ON K2M 1P6
T 613 254 9643 novatech-eng.com

ARCHITECTES Architect
NEUF architect(e)s
630, St-Jac, Rensselaire-C. 32e étage, Montréal QC H3B 1S6
T 514 847 1117 NEUFArchitectes.com

SCEAU / Seal



CLIENT Client
brigit

OUVRAGE Project
PETRIE'S LANDING I - TOWER 5/6

EMPLACEMENT Location NO PROJET No.
8910 & 8920 11597/12191
JEANNE-D'ARC BLVD
ORLEANS, ON

NO RÉVISION DATE (aa-mm-jj)

A	ISSUED FOR SPA REV5	2019-09-04
B	ISSUED FOR SPA REV6	2021-11-02
C	ISSUED FOR CITY COMMENTS REV6	2021-12-10
D	RE-ISSUED FOR SPA REV6	2022-02-28
E	FOR SPA REVIEW	2024-08-26
F	FOR SPA REISSUE REV7	2025-10-30

DESSINÉ PAR Drawn by AV
DATE (aa-mm-jj) 09/27/24
TITRE DU DESSIN Drawing Title

VERIFIÉ PAR Checked by MU
ÉCHELLE Scale As
indicated

WEST ELEVATION T6

RÉVISION Revision NO. DESSIN Dwg Number
F A403b.