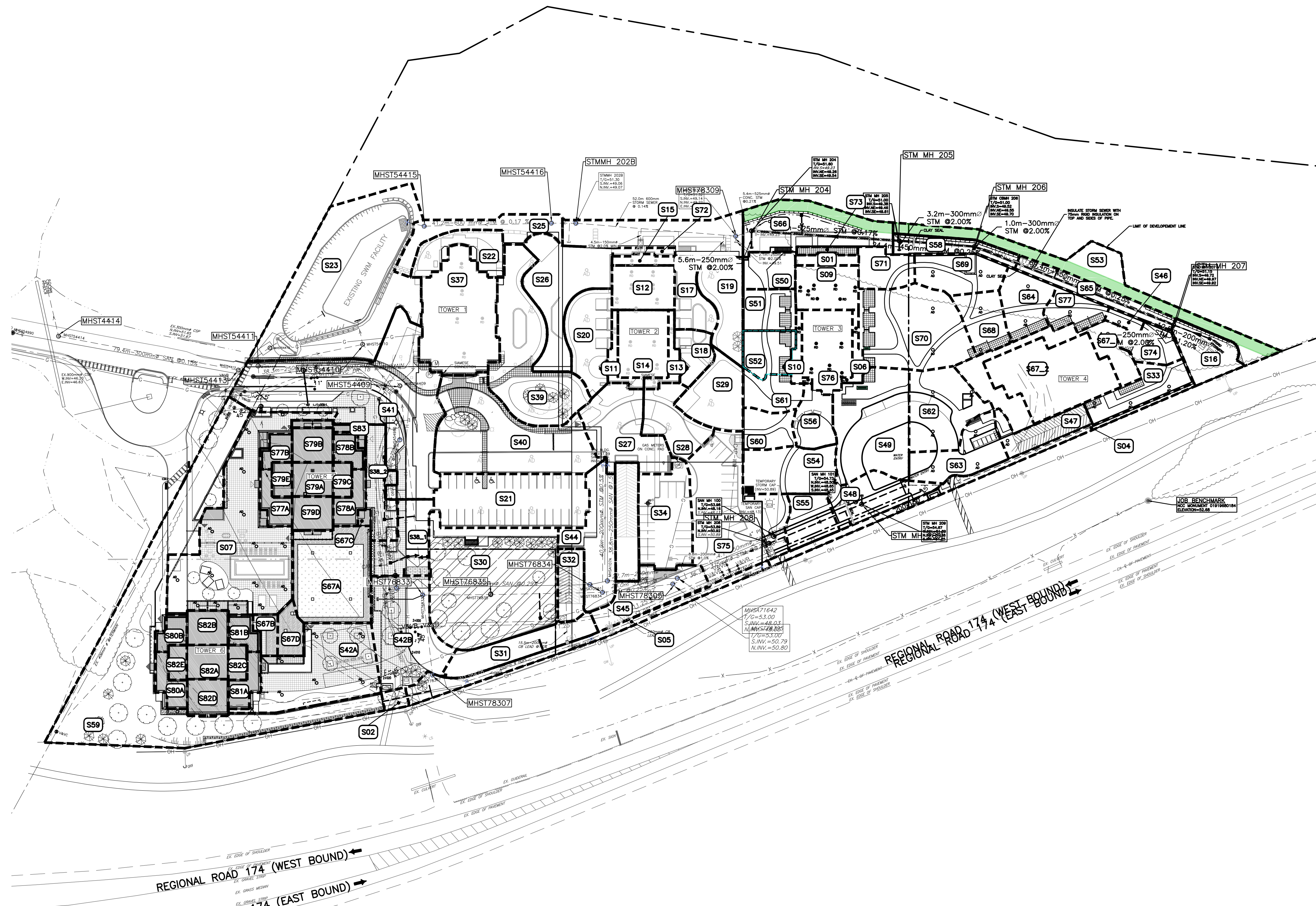


| Name | Area (ha) | Cavg |
|-------|-----------|------|
| S01 | 0.0074 | 0.9 |
| S02 | 0.0048 | 0.36 |
| S04 | 0.0285 | 0.25 |
| S05 | 0.037 | 0.21 |
| S06 | 0.0075 | 0.9 |
| S07 | 0.1546 | 0.8 |
| S09 | 0.0294 | 0.9 |
| S10 | 0.0078 | 0.9 |
| S11 | 0.0082 | 0.9 |
| S12 | 0.0283 | 0.9 |
| S13 | 0.0096 | 0.9 |
| S14 | 0.0359 | 0.9 |
| S15 | 0.0066 | 0.9 |
| S16 | 0.028 | 0.29 |
| S17 | 0.0246 | 0.38 |
| S18 | 0.0168 | 0.36 |
| S19 | 0.0366 | 0.37 |
| S20 | 0.0411 | 0.33 |
| S21 | 0.0849 | 0.9 |
| S22 | 0.0299 | 0.68 |
| S23 | 0.1972 | 0.2 |
| S24 | 0.0602 | 0.28 |
| S25 | 0.0338 | 0.2 |
| S26 | 0.0662 | 0.27 |
| S27 | 0.0552 | 0.77 |
| S28 | 0.0328 | 0.7 |
| S29 | 0.0376 | 0.36 |
| S30 | 0.1517 | 0.36 |
| S31 | 0.0372 | 0.9 |
| S32 | 0.0197 | 0.9 |
| S33 | 0.0302 | 0.33 |
| S34 | 0.0543 | 0.73 |
| S37 | 0.087 | 0.9 |
| S38_1 | 0.0352 | 0.86 |
| S38_2 | 0.0312 | 0.86 |
| S39 | 0.0951 | 0.34 |
| S40 | 0.114 | 0.85 |
| S41 | 0.1786 | 0.76 |
| S42A | 0.0874 | 0.86 |
| S42B | 0.0731 | 0.84 |
| S43 | 0.029 | 0.9 |
| S44 | 0.0496 | 0.2 |
| S45 | 0.0396 | 0.76 |
| S46 | 0.0113 | 0.33 |
| S47 | 0.0243 | 0.84 |
| S48 | 0.0359 | 0.8 |
| S49 | 0.0801 | 0.61 |
| S50 | 0.02 | 0.43 |
| S51 | 0.0231 | 0.47 |
| S52 | 0.0224 | 0.41 |
| S53 | 0.0634 | 0.2 |
| S54 | 0.0442 | 0.26 |
| S55 | 0.0232 | 0.67 |
| S56 | 0.0223 | 0.51 |
| S58 | 0.0211 | 0.35 |
| S59 | 0.2551 | 0.3 |
| S60 | 0.0205 | 0.37 |
| S61 | 0.0213 | 0.44 |
| S62 | 0.0443 | 0.59 |
| S63 | 0.0435 | 0.7 |
| S64 | 0.0516 | 0.39 |
| S65 | 0.0253 | 0.23 |
| S66 | 0.0639 | 0.3 |
| S67_1 | 0.0511 | 0.9 |
| S67_2 | 0.0762 | 0.9 |
| S67A | 0.0742 | 0.9 |
| S67B | 0.0099 | 0.9 |
| S67C | 0.0033 | 0.9 |
| S67D | 0.0123 | 0.9 |
| S68 | 0.0279 | 0.4 |
| S69 | 0.0366 | 0.33 |
| S70 | 0.0828 | 0.39 |
| S71 | 0.023 | 0.26 |
| S72 | 0.005 | 0.9 |
| S73 | 0.0048 | 0.9 |
| S74 | 0.0147 | 0.52 |
| S75 | 0.1074 | 0.69 |
| S76 | 0.0403 | 0.9 |
| S77A | 0.0125 | 0.9 |
| S77B | 0.01 | 0.9 |
| S78A | 0.0116 | 0.9 |
| S78B | 0.0098 | 0.9 |
| S79A | 0.0149 | 0.9 |
| S79B | 0.0153 | 0.9 |
| S79C | 0.0071 | 0.9 |
| S79D | 0.0147 | 0.9 |
| S79E | 0.0071 | 0.9 |
| S80A | 0.0094 | 0.9 |
| S80B | 0.0083 | 0.9 |
| S81A | 0.0115 | 0.9 |
| S81B | 0.0095 | 0.9 |
| S82A | 0.0147 | 0.9 |
| S82B | 0.0153 | 0.9 |
| S82C | 0.0071 | 0.9 |
| S82D | 0.0142 | 0.9 |
| S82E | 0.0071 | 0.9 |
| S83 | 0.0067 | 0.9 |



KEY PLAN

SITE LOCATION

EXISTING LEGEND

- OH: OVERHEAD WIRES
- UP: UTILITY POLE
- LS: LIGHT STANDARD
- CB: CATCHBASIN
- CBE: CATCHBASIN ELBOW
- CBT: CATCHBASIN TEE
- AD: AREA DRAIN
- T/G: TOP OF GRATE
- GM: GAS METER
- MH: MANHOLE (SANITARY OR STORM)
- GM: GAS MAIN
- V&VB: VALVE AND VALVE BOX
- V&VC: VALVE AND VALVE CHAMBER
- FH: FIRE HYDRANT
- SS: STORM SEWER
- SS: SANITARY SEWER
- WM: WATERMAIN
- T: TREES
- F: FENCE
- OG: ORIGINAL GROUND ELEVATION
- EX: EXISTING CONTOUR
- OF: OVERLAND FLOW ROUTE

PROPOSED LEGEND

- STM MH 211: STORM MANHOLE
- SAN MH 104: SANITARY MANHOLE
- CB1: CATCHBASIN
- CBE: CATCHBASIN ELBOW
- CBT: CATCHBASIN TEE
- AD: AREA DRAIN AND DECK DRAIN
- RD: ROOF DRAIN
- V&VB: VALVE AND VALVE BOX
- V&VC: VALVE AND VALVE CHAMBER (W3)
- FH: FIRE HYDRANT
- 45°: 45° WATERMAIN BEND
- 22°: 22.5° WATERMAIN BEND
- 11°: 11.25° WATERMAIN BEND
- 200x150: WATERMAIN CROSS
- 200x200x200: WATERMAIN CROSS (MAIN BRANCH)
- 200x150: WATERMAIN REDUCER
- WM: WATER METER
- SC: REMOTE WATER METER READER
- SC: SIAMESE CONNECTION
- GRS: GARAGE FLOOR SLAB ELEVATION
- P1: PARKING LEVEL FLOOR ELEVATION
- 3.0%: SLOPE AND DIRECTION OF FLOW
- 54.75: FINAL GRADE
- H.P.: HIGH POINT
- TERRACING: TERRACING
- T/G: TOP OF GRATE ELEVATION
- T/F: TOP OF FLANGE
- OF: OVERLAND FLOW ROUTE
- PL: PHASING LIMITS
- SL: SILT FENCE
- DC: DEPRESSED BARRIER CURB LOCATION
- SW: SWALE AND DIRECTION OF FLOW
- RETAINING WALL: RETAINING WALL
- BL: BUILDING ENTRY LOCATION
- ST: STRUCTURE TO BE ADJUSTED
- SR: STRUCTURE TO BE RELOCATED
- S02: SUBCATCHMENT AREA NUMBER

TOPOGRAPHIC INFORMATION
 PROVIDED BY ANNIS, O'SULLIVAN, VOLLEBEKK LTD.
 DATED JULY 20, 2018

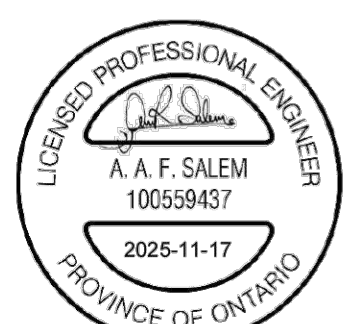
JOB BENCHMARK
 PROVIDED BY ANNIS, O'SULLIVAN, VOLLEBEKK LTD.
 NCC MONUMENT 01919680184
 NTM-NAD83 ZONE 9
 NORTHING=5040610.15
 EASTING=384736.57
 ELEVATION=52.68

ARCHITECTURE DE PAYSAGE Landscape architect

CIVIL Client
exp SERVICES INC.
 2650 Queenview Drive, Unit 100, Ottawa, ON, K2B 8H6
 T 613 688 1939 F 613 225 7330 www.exp.com

ARCHITECTES Architect
NEUF architect(e)s INCORPORÉ
 630, rue Notre-Dame O. 5^{ème} étage, Montréal, QC H2B 1S6
 T 514 847 1117 NEUFArchitectes.com

SCIAU Seal



exp Services Inc.
 L: +1 613 688 1939 | F: +1 613 225 7337
 2650 Queenview Drive, Suite 100
 Ottawa, ON K2B 8H6
 Canada
 www.exp.com



- BUILDINGS • EARTH & ENVIRONMENT • ENERGY •
- INDUSTRIAL • INFRASTRUCTURE • SUSTAINABILITY •



98 Rue Laha, Gatineau QC J8Y 3R7
 T 819 243 7392 www.brigil.com

COURAGE Project

PETRIE'S LANDING I - PHASES 3-5

EMPLACEMENT Location NO PROJET No
 OTTAWA, ON. OTT-00247308-A0

NO REVISION DATE (mm.mjj)

| | | |
|---------------|------------------------------------|------------------------|
| 1 | ISSUED FOR REVIEW | 18.05.03 |
| 2 | ISSUED FOR SITE PLAN APPROVAL | 18.09.14 |
| 3 | ISSUED FOR CLIENT REVIEW | 19.04.05 |
| 4 | ISSUED FOR SITE PLAN APPROVAL | 19.05.10 |
| 5 | ISSUED FOR SITE PLAN APPROVAL | 19.05.22 |
| 6 | ISSUED FOR SPA-CITY COMMENTS | 19.07.22 |
| 7 | REVISED PER CITY COMMENTS | 19.07.30 |
| 8 | UPDATED TOWER 4 | 20.02.12 |
| 9 | UPDATE TO OVERLAND FLOW ROUTE | 20.06.12 |
| 10 | PRE-IFC FOR BRIGIL REVIEW | 20.09.14 |
| 11 | ISSUED FOR CONSTRUCTION | 20.11.10 |
| 12 | ISSUED FOR TOWER 4 BUILDING PERMIT | 21.12.10 |
| 13 | ISSUED FOR PERMIT UPDATE | 22.03.14 |
| 14 | ISSUED FOR 80% REVIEW | 22.04.21 |
| 15 | ISSUED FOR PERMIT | 22.07.15 |
| 16 | ISSUED FOR POST TENDER ADDENDUM 1 | 22.10.28 |
| 17 | ISSUED FOR TENDER | 22.12.05 |
| 18 | ISSUED FOR CONSTRUCTION | 22.12.16 |
| 19 | ISSUED FOR RE-TENDER | 23.03.10 |
| 20 | ISSUED FOR COORDINATION | 23.11.08 |
| 21 | ISSUED FOR SPA-009 | 23.11.17 |
| 22 | UPDATED CITY NUMBER | 25.02.10 |
| 23 | ISSUED FOR SITE PLAN APPROVAL | 25.11.17 |
| DESIGNÉ PAR | Drawn by | VERIFIÉ PAR Checked by |
| S. BUTLER | | B. THOMAS |
| DATE (mm.mjj) | | ECHÉLLE: Scale |
| 18.07.18 | | 1:750 |

STORM DRAINAGE PLAN

RÉVISION Revision NO. DESSIN Dwg Number

C400
#14602