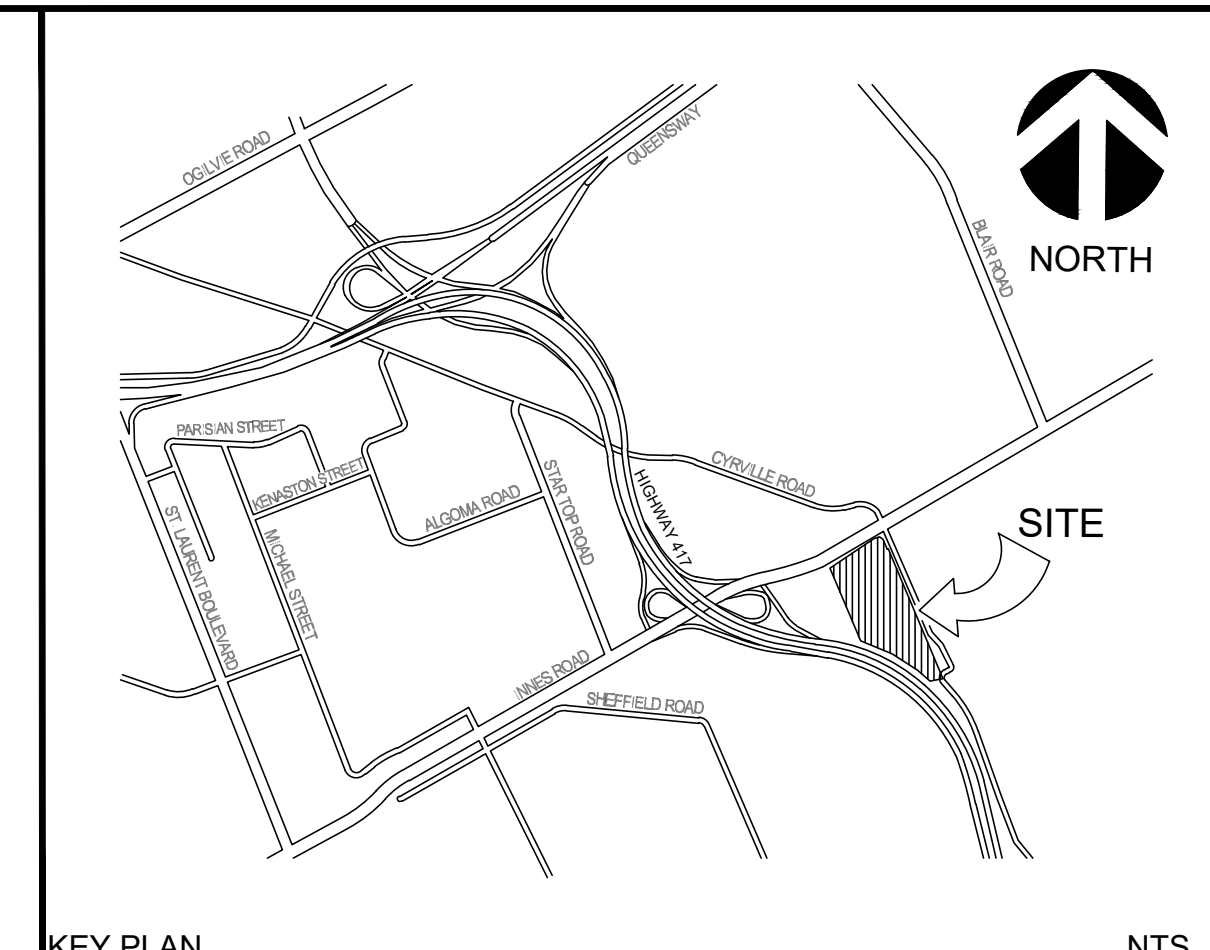
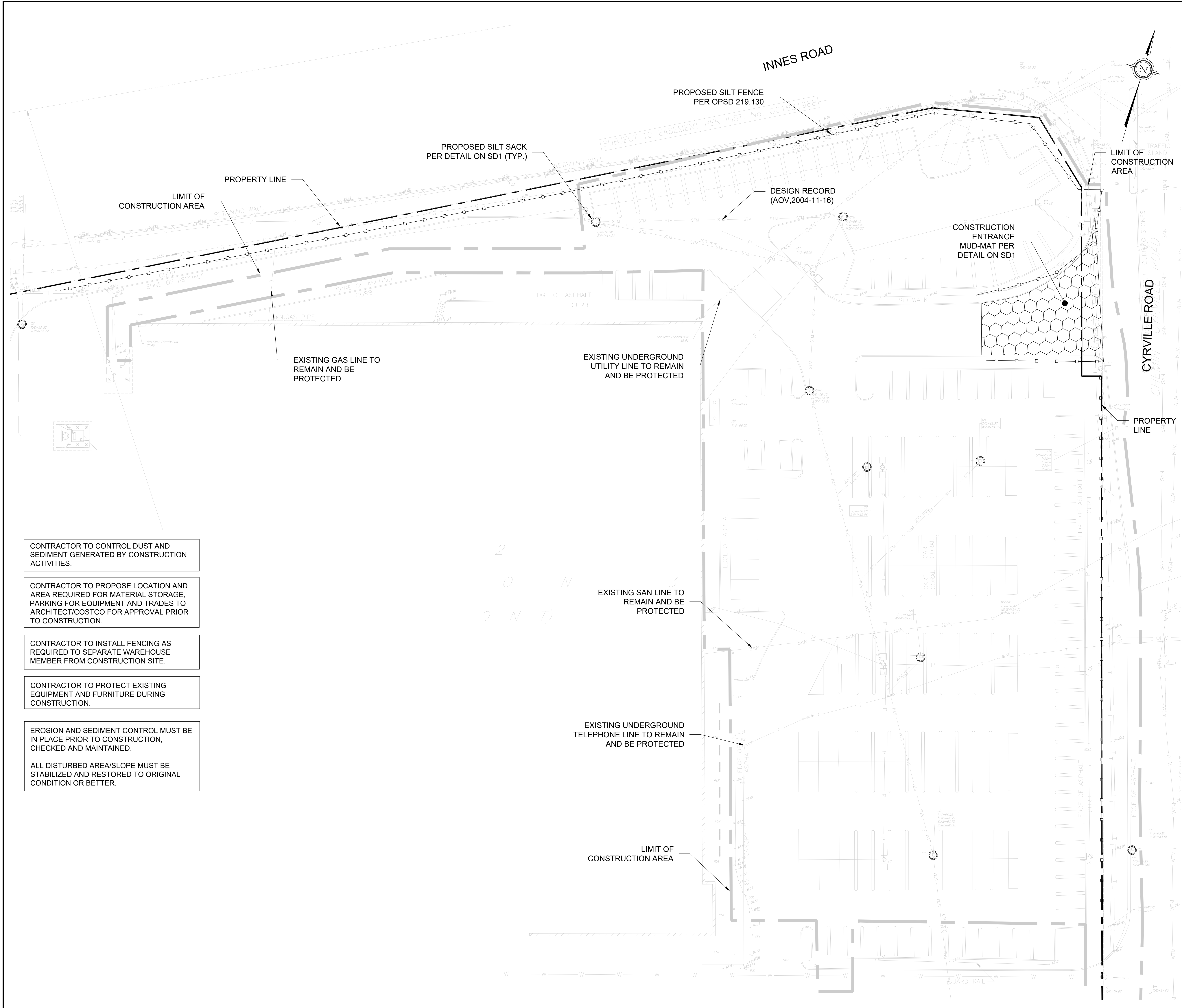


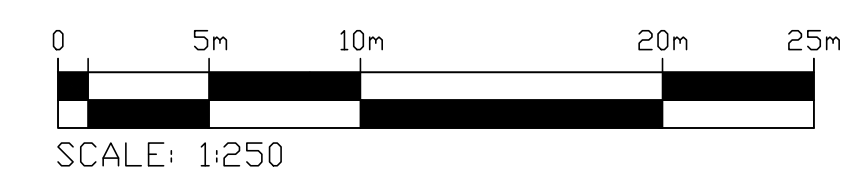
| | | | | | |
|--|-------------------------------|-------------|---------------|---------|-------------|
| 6. | ISSUED FOR SITE PLAN APPROVAL | SM | 11-21-2025 | U | |
| 5. | ISSUED FOR BID | SM | 05-16-2025 | U | |
| 4. | ISSUED FOR PERMIT/BID | SM | 04-30-2025 | U | |
| 3. | ISSUED FOR QA3 | SM | 04-21-2025 | U | |
| 2. | ISSUED FOR QA2 | SM | 04-09-2025 | U | |
| 1. | ISSUED FOR QA | NCW | 03-27-2025 | U | |
| No. | REVISIONS TO DRAWING | BY | DATE | APPR. | |
| ALL PREVIOUS ISSUES OF THIS DRAWING ARE SUPERSEDED | | | | | |
| CLIENT | | | | | |
| COSTCO WHOLESALE | | | | | |
| MUNICIPALITY | | | | | |
| CITY OF OTTAWA | | | | | |
| PROJECT TITLE | | | | | |
| COSTCO GLOUCESTER GAS BAR | | | | | |
| 1900 CYRVILLE RD. ON, K1B 3V5 | | | | | |
| SHEET TITLE | | | | | |
| DETAILS | | | | | |
| wsp | | | | | |
| | | | | | |
| DESIGNED | SM | DRAWN | J.T. | CHECKED | I.J./N.C.W. |
| SCALE | AS NOTED | DATE | NOVEMBER 2025 | | |
| PROJECT NUMBER | 211-12161 | DWG. NUMBER | SD1 | | |

FILENAME: C:\Users\CA1762\OneDrive\Documents\WSP\Canada\proj\MSR HSD22\12161-00-Costco Gloucester Gas Bar\MSR HSD22\12161-00-SD1.dwg
 PLOTDATE: Nov 27, 2025 - 15:46:14
 CALS: CA1762



LEGEND

| | |
|-----|---|
| FFE | FINISHED FLOOR ELEVATION |
| — | BARRIER CURB OPSD 600.110 |
| — | DEPRESSED CURB |
| — | CART STORAGE (SEE ARCH. DRAWINGS FOR DETAILS) |
| — | CONC. PAVING |
| — | DIRECTION OF DRAINAGE |
| □ | LIGHT POLE (B.O.) |
| □ | CATCHBASIN |
| ○ | CATCHBASIN MANHOLE |
| ○ | STORM MANHOLE |
| ○ | SANITARY MANHOLE |
| ○ | EMERGENCY SPILL SHUTOFF VALVE |
| ○ | WATER VALVE |
| ○ | HYDRANT |
| — | LIMIT OF CONSTRUCTION |
| — | PROPERTY LINE |
| ○ | EXISTING WATER VALVE |
| ○ | EXISTING GAS MANHOLE |
| ○ | CATCHBASIN SILT-SACK SEDIMENTATION CONTROL DEVICE |
| — | SILTATION FENCE |



CONTRACTOR TO CONTROL DUST AND SEDIMENT GENERATED BY CONSTRUCTION ACTIVITIES.

CONTRACTOR TO PROPOSE LOCATION AND AREA REQUIRED FOR MATERIAL STORAGE, PARKING FOR EQUIPMENT AND TRADES TO ARCHITECT/COSTCO FOR APPROVAL PRIOR TO CONSTRUCTION.

CONTRACTOR TO INSTALL FENCING AS REQUIRED TO SEPARATE WAREHOUSE MEMBER FROM CONSTRUCTION SITE.

CONTRACTOR TO PROTECT EXISTING EQUIPMENT AND FURNITURE DURING CONSTRUCTION.

EROSION AND SEDIMENT CONTROL MUST BE IN PLACE PRIOR TO CONSTRUCTION, CHECKED AND MAINTAINED.

ALL DISTURBED AREA/SLOPE MUST BE STABILIZED AND RESTORED TO ORIGINAL CONDITION OR BETTER.

| No. | REVISIONS TO DRAWING | BY | DATE | APPR. |
|-----|-------------------------------|-----|------------|-------|
| 6. | ISSUED FOR SITE PLAN APPROVAL | SM | 11-27-2025 | I.J. |
| 5. | ISSUED FOR BID | SM | 05-16-2025 | I.J. |
| 4. | ISSUED FOR PERMIT/BID | SM | 04-30-2025 | I.J. |
| 3. | ISSUED FOR QA3 | SM | 04-21-2025 | |
| 2. | ISSUED FOR QA2 | SM | 04-09-2025 | |
| 1. | ISSUED FOR QA | NCW | 03-27-2025 | |

ALL PREVIOUS ISSUES OF THIS DRAWING ARE SUPERSEDED

CLIENT: **COSTCO WHOLESALE**

MUNICIPALITY: **CITY OF OTTAWA**

PROJECT TITLE: **COSTCO GLOUCESTER GAS BAR**
1900 CYRVILLE RD, ON, K1B 3V5

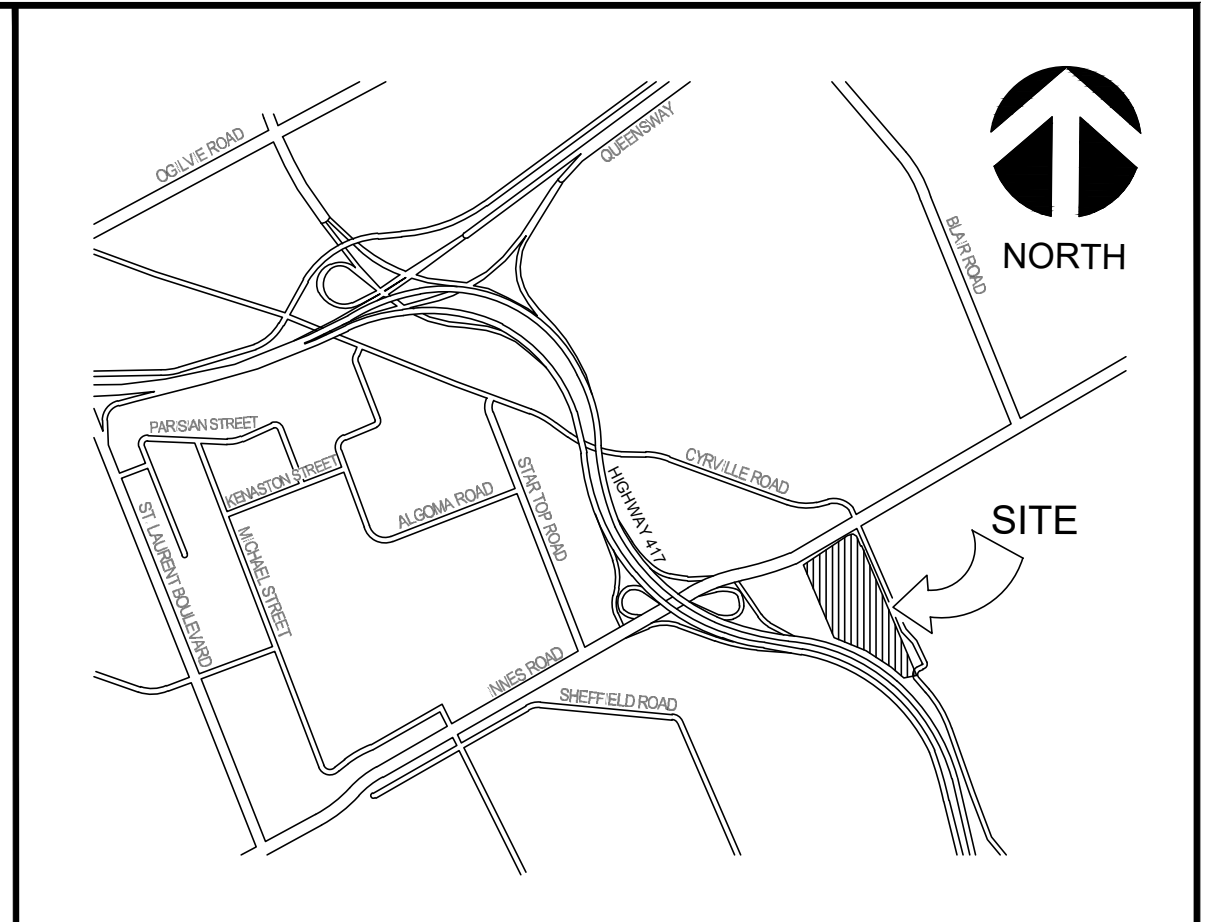
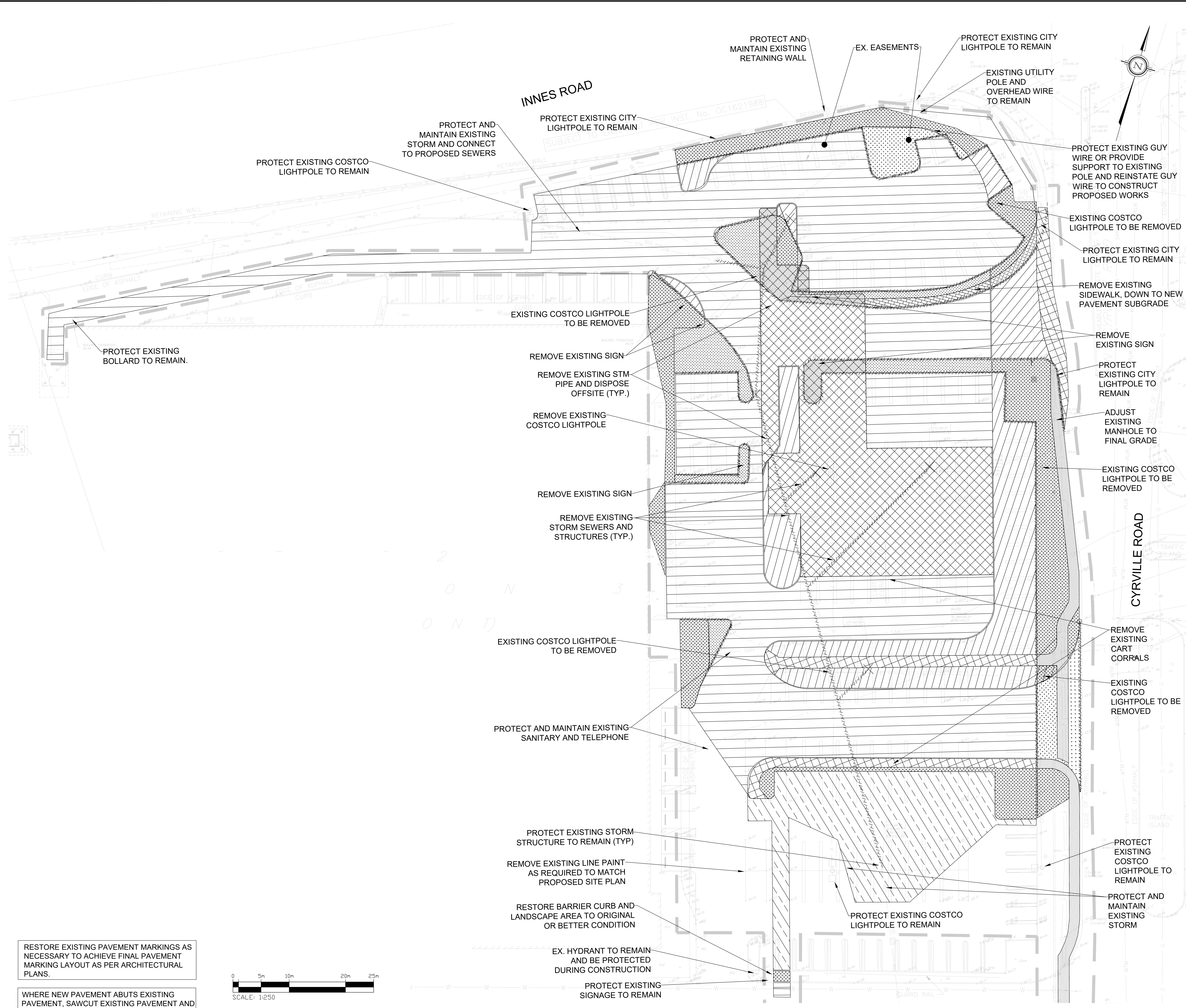
SHEET TITLE: **EROSION CONTROL PLAN**



| | |
|--|--|
| | |
|--|--|

| | | |
|---------------------------|---------------------|----------------------|
| DESIGNED: S.M. | DRAWN: J.T. | CHECKED: I.J./N.C.W. |
| SCALE: 1:250 | DATE: NOVEMBER 2025 | |
| PROJECT NUMBER: 211-12161 | DWG NUMBER: ES1 | |

FILENAME: C:\Users\jtanovsk\OneDrive\Documents\Projects\WSP\211-12161\211-12161-00-Costco Gloucester Gas Bar\EROSION.dwg; 211-12161-00-EROSION.dwg
 PLOT DATE: Nov 27 2025 1:30 PM; C:\Users\jtanovsk



LEGEND

| | |
|--|--|
| | BARRIER CURB OPSD 600.110 |
| | DEPRESSED CURB |
| | CART STORAGE |
| | EXISTING STORM SEWER |
| | EXISTING SANITARY SEWER |
| | EXISTING CATCHBASIN |
| | PROPOSED STORM MANHOLE |
| | PROPOSED CATCHBASIN |
| | LIMIT OF CONSTRUCTION |
| | PROPERTY LINE |
| | EXISTING WATER VALVE |
| | EXISTING GAS MANHOLE |
| | REMOVAL OF CURB AND SERVICING |
| | FULL DEPTH LANDSCAPE, PLANTING AND ADDITIONAL SUB-GRADE REMOVAL AND REPLACEMENT WITH HEAVY DUTY PAVEMENT |
| | FULL DEPTH LANDSCAPE, PLANTING AND ADDITIONAL SUB-GRADE REMOVAL AND REPLACEMENT WITH CONCRETE PAVEMENT |
| | FULL DEPTH LANDSCAPE, PLANTING AND ADDITIONAL SUB-GRADE REMOVAL AND REPLACEMENT WITH PROPOSED LANDSCAPE |
| | FULL DEPTH CONCRETE SIDEWALK AND ADDITIONAL SUBGRADE REMOVAL AND REPLACEMENT WITH HEAVY DUTY PAVEMENT |
| | FULL DEPTH CONCRETE SIDEWALK AND ADDITIONAL SUBGRADE REMOVAL AND REPLACEMENT WITH LANDSCAPE ISLAND |
| | FULL DEPTH ASPHALT PAVEMENT AND ADDITIONAL SUBGRADE REMOVAL AND REPLACEMENT WITH HEAVY DUTY PAVEMENT |
| | FULL DEPTH ASPHALT PAVEMENT AND ADDITIONAL SUBGRADE REMOVAL AND REPLACEMENT WITH LANDSCAPE ISLAND |
| | FULL DEPTH ASPHALT AND ADDITIONAL SUBGRADE REMOVAL AND REPLACEMENT WITH CONCRETE PAVEMENT |
| | FULL DEPTH ASPHALT PAVEMENT AND ADDITIONAL SUBGRADE REMOVAL AND REPLACEMENT WITH LIGHT DUTY PAVEMENT |

| No. | REVISIONS TO DRAWING | BY | DATE | APPR. |
|-----|-------------------------------|-----|------------|-------|
| 7. | ISSUED FOR SITE PLAN APPROVAL | SM | 11-27-2025 | UJ |
| 6. | ISSUED FOR BID | SM | 05-16-2025 | UJ |
| 5. | ISSUED FOR PERMIT/BID | SM | 04-30-2025 | UJ |
| 4. | ISSUED FOR QA3 | SM | 04-21-2025 | |
| 3. | ISSUED FOR QA2 | SM | 04-09-2025 | |
| 2. | ISSUED FOR QA | NCW | 03-27-2025 | |
| 1. | ISSUED FOR GREEN INK | NCW | 02-18-2025 | |

ALL PREVIOUS ISSUES OF THIS DRAWING ARE SUPERSEDED

CLIENT

MUNICIPALITY

CITY OF OTTAWA

PROJECT TITLE

COSTCO GLOUCESTER
GAS BAR
1900 CYRVILLE RD, ON, K1B 3V5

SHEET TITLE

SITE REMOVAL PLAN

DESIGNED: S.M. DRAWN: J.T. CHECKED: I.J./N.C.W.

SCALE: 1:250 DATE: APRIL 2025

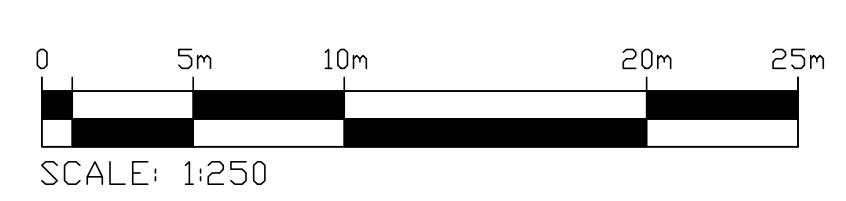
PROJECT NUMBER: 211-12161 DWG. NUMBER: RM1

PROFESSIONAL ENGINEER: S. WYNOR, 100631937, 2025-11-27, PROVINCE OF ONTARIO

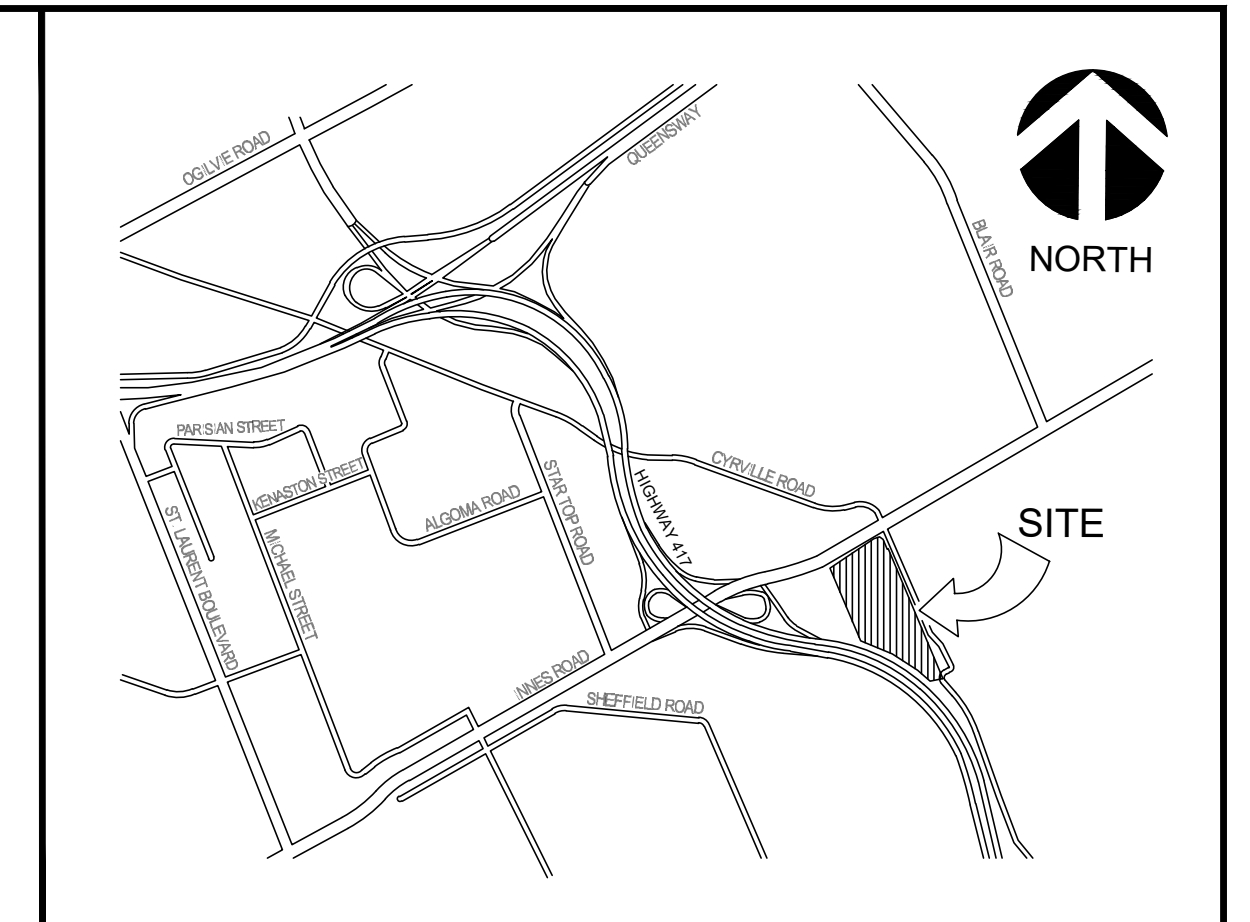
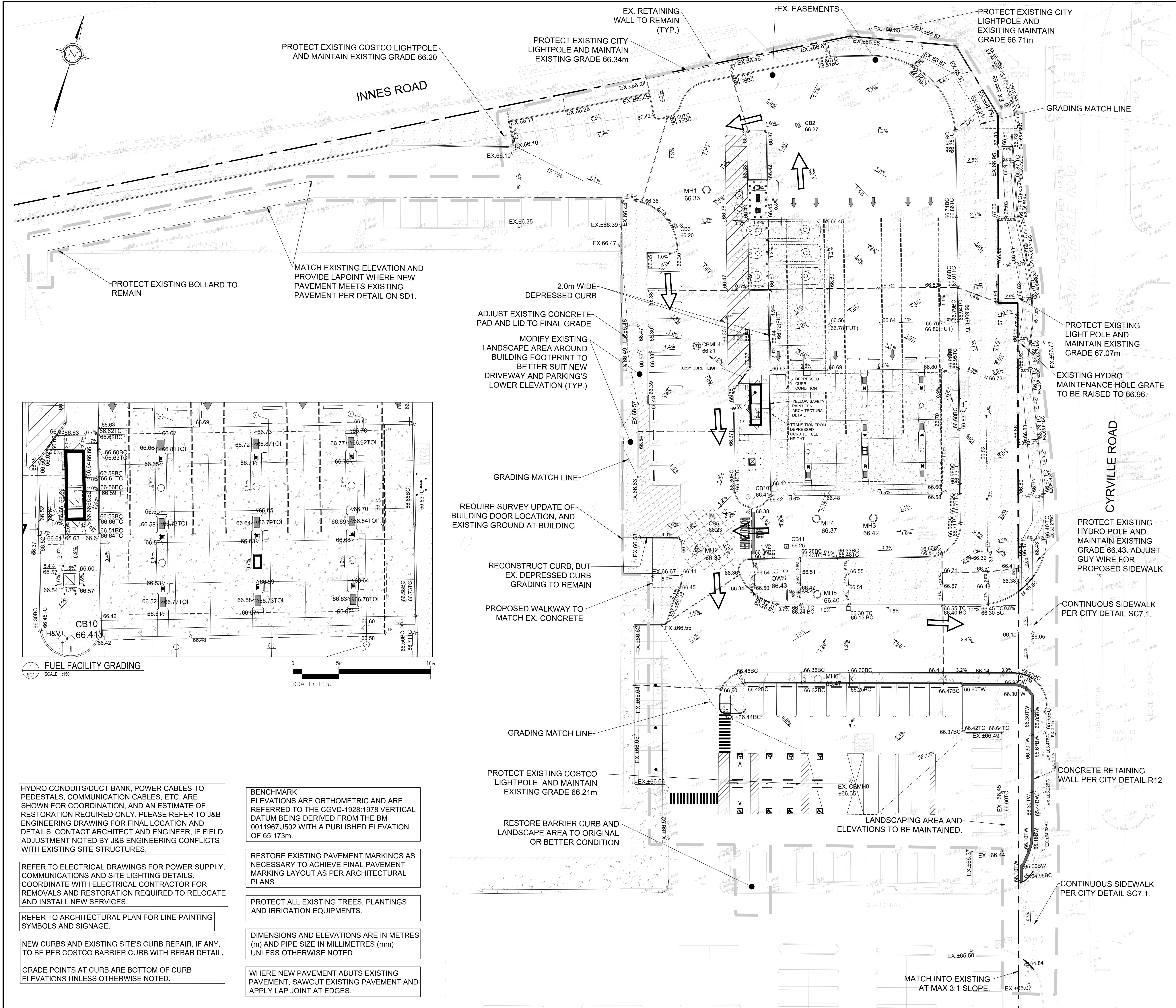
REGISTERED PROFESSIONAL ENGINEER: M. JAFFERIE, 100164153, 2025-11-27, PROVINCE OF ONTARIO

RESTORE EXISTING PAVEMENT MARKINGS AS NECESSARY TO ACHIEVE FINAL PAVEMENT MARKING LAYOUT AS PER ARCHITECTURAL PLANS.

WHERE NEW PAVEMENT ABUTS EXISTING PAVEMENT, SAWCUT EXISTING PAVEMENT AND APPLY LAP JOINT AT EDGES.



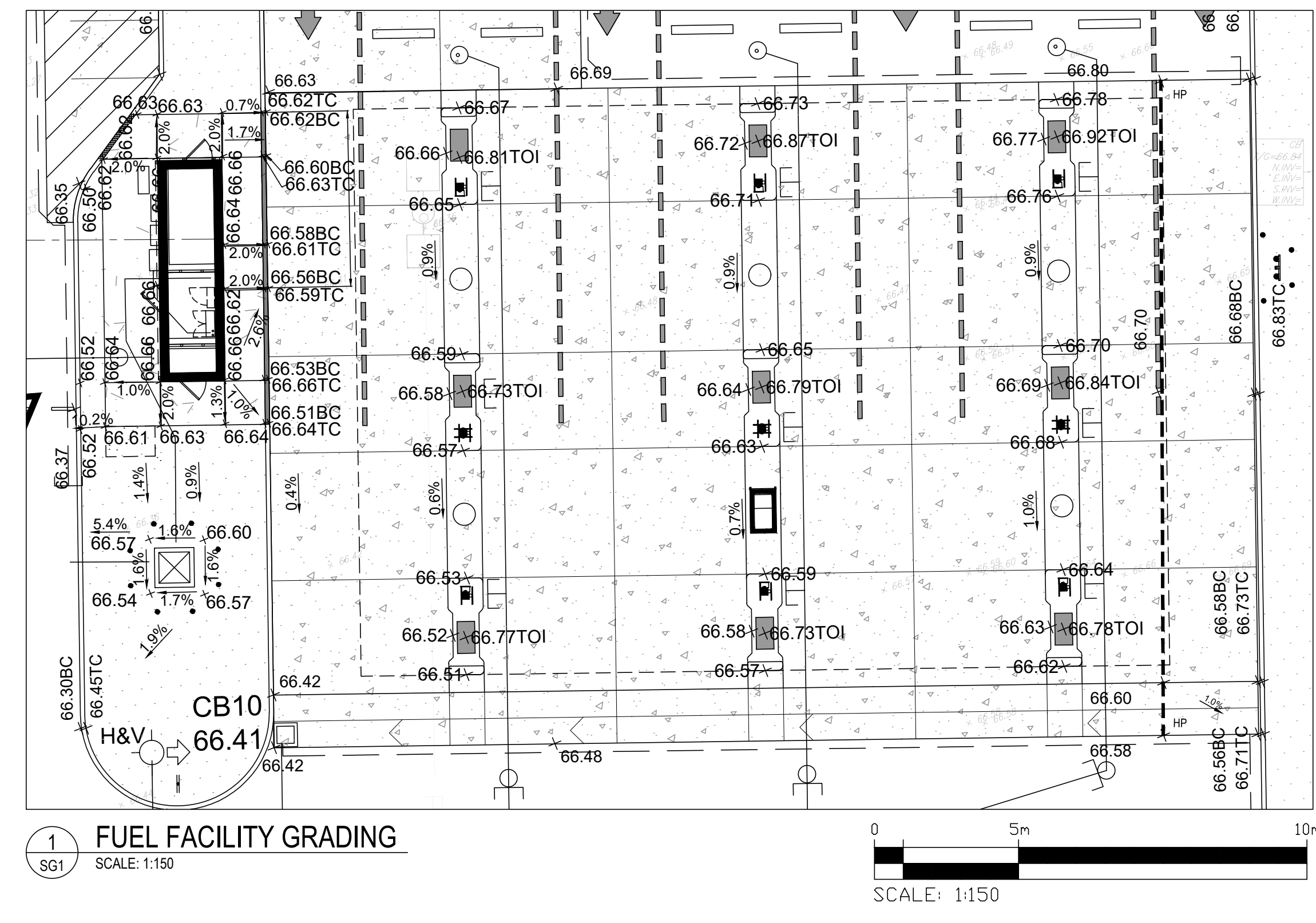
FILENAME: C:\Users\jta\OneDrive\Documents\Projects\2025\211-12161-Costco Gloucester Gas Bar\211-12161-001.dwg
 PLOT DATE: Nov 27, 2025 1:32pm CADT07182



LEGEND

| | |
|-----|-----------------------------|
| FFE | FINISHED FLOOR ELEVATION |
| — | BARRIER CURB OPSD 600.110 |
| — | DEPRESSED CURB |
| — | CURB TRANSITION |
| — | 0.3m CURB |
| — | CART STORAGE |
| — | EXISTING STORM SEWER |
| — | EXISTING SANITARY SEWER |
| — | EXISTING CATCHBASIN |
| ○ | PROPOSED STORM MANHOLE |
| □ | PROPOSED CATCHBASIN |
| — | LIMIT OF CONSTRUCTION |
| — | PROPERTY LINE |
| — | EXISTING WATER VALVE |
| — | EXISTING GAS MANHOLE |
| × | PROPOSED GRADE |
| × | PROPOSED TOP OF ISLAND |
| × | FUTURE GRADE |
| × | EXISTING GRADE |
| — | HIGH POINT RIDGE |
| — | PROPOSED SWALE |
| — | GRADING MATCH LINE |
| — | PROPOSED ELECTRICAL UTILITY |
| — | PROPOSED ROAD PAINTING |
| → | MAJOR OVERLAND FLOW |
| — | RETAINING WALL |
| — | CONCRETE SIDEWALK |
| — | LANDSCAPE AREA |

SCALE: 1:250



HYDRO CONDUITS/DUCT BANK, POWER CABLES TO PEDESTALS, COMMUNICATION CABLES, ETC. ARE SHOWN FOR COORDINATION, AND AN ESTIMATE OF RESTORATION REQUIRED ONLY. PLEASE REFER TO J&B ENGINEERING DRAWING FOR FINAL LOCATION AND DETAILS. CONTACT ARCHITECT AND ENGINEER, IF FIELD ADJUSTMENT NOTED BY J&B ENGINEERING CONFLICTS WITH EXISTING SITE STRUCTURES.

REFER TO ELECTRICAL DRAWINGS FOR POWER SUPPLY, COMMUNICATIONS AND SITE LIGHTING DETAILS. COORDINATE WITH ELECTRICAL CONTRACTOR FOR REMOVALS AND RESTORATION REQUIRED TO RELOCATE AND INSTALL NEW SERVICES.

REFER TO ARCHITECTURAL PLAN FOR LINE PAINTING SYMBOLS AND SIGNAGE.

NEW CURBS AND EXISTING SITE'S CURB REPAIR, IF ANY, TO BE PER COSTCO BARRIER CURB WITH REBAR DETAIL.

GRADE POINTS AT CURB ARE BOTTOM OF CURB ELEVATIONS UNLESS OTHERWISE NOTED.

BENCHMARK ELEVATIONS ARE ORTHOMETRIC AND ARE REFERRED TO THE CGVD-1928:1978 VERTICAL DATUM BEING DERIVED FROM THE BM 0011967U502 WITH A PUBLISHED ELEVATION OF 65.173m.

RESTORE EXISTING PAVEMENT MARKINGS AS NECESSARY TO ACHIEVE FINAL PAVEMENT MARKING LAYOUT AS PER ARCHITECTURAL PLANS.

PROTECT ALL EXISTING TREES, PLANTINGS AND IRRIGATION EQUIPMENTS.

DIMENSIONS AND ELEVATIONS ARE IN METRES (m) AND PIPE SIZE IN MILLIMETRES (mm) UNLESS OTHERWISE NOTED.

WHERE NEW PAVEMENT ABUTS EXISTING PAVEMENT, SAWCUT EXISTING PAVEMENT AND APPLY LAP JOINT AT EDGES.

| No. | REVISIONS TO DRAWING | BY | DATE | APPR. |
|-----|-------------------------------|-----|------------|-------|
| 7. | ISSUED FOR SITE PLAN APPROVAL | SM | 11-27-2025 | UJ |
| 6. | ISSUED FOR BID | SM | 05-16-2025 | UJ |
| 5. | ISSUED FOR PERMIT/BID | SM | 04-30-2025 | UJ |
| 4. | ISSUED FOR QA3 | SM | 04-21-2025 | |
| 3. | ISSUED FOR QA2 | SM | 04-09-2025 | |
| 2. | ISSUED FOR QA | NCW | 03-27-2025 | |
| 1. | ISSUED FOR GREEN INK | NCW | 02-19-2025 | |

ALL PREVIOUS ISSUES OF THIS DRAWING ARE SUPERSEDED

CLIENT: **COSTCO**

MUNICIPALITY: CITY OF OTTAWA

PROJECT TITLE: **COSTCO GLOUCESTER**
GAS BAR

SHEET TITLE: **SITE GRADING PLAN**

DESIGNED: S.M. DRAWN: J.T. CHECKED: I.J.N.C.W.

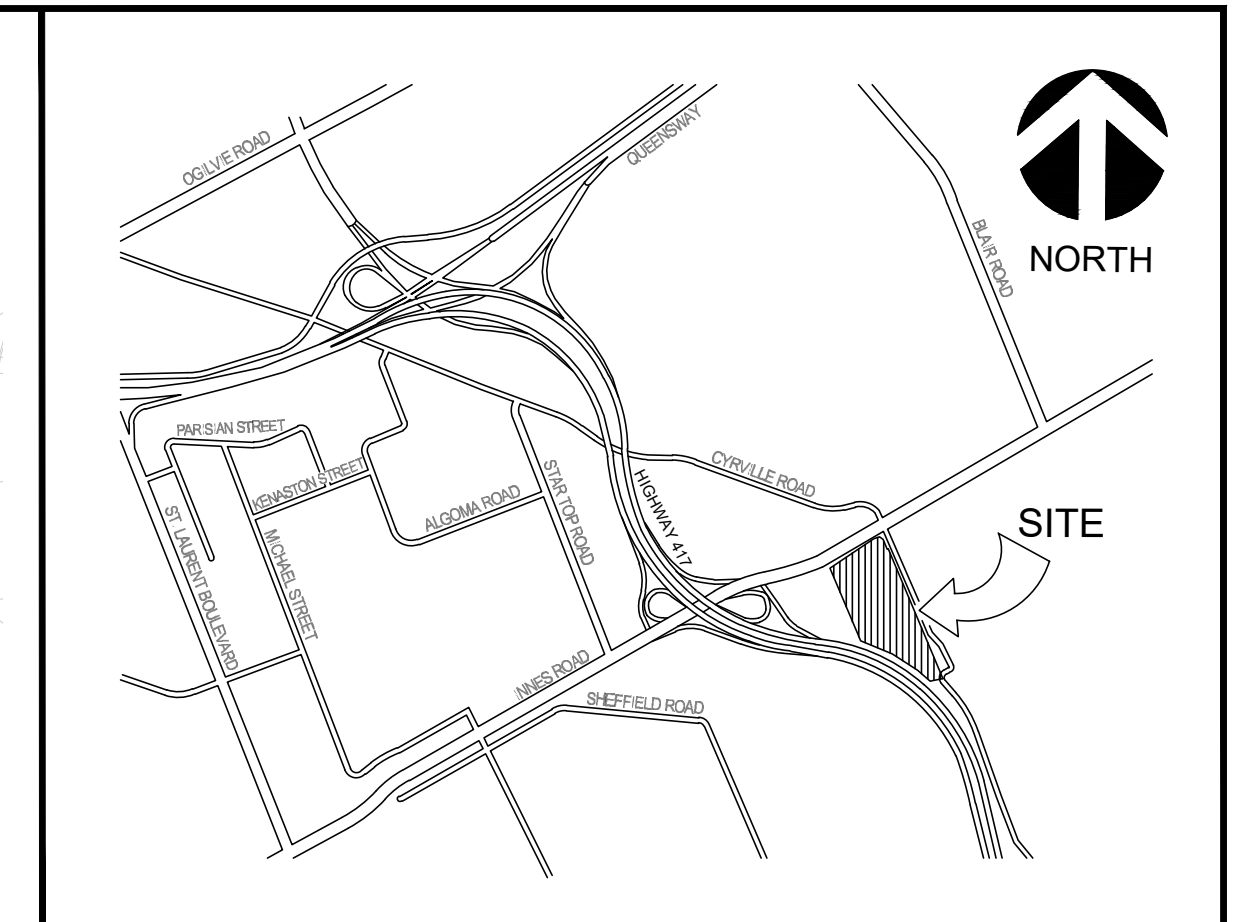
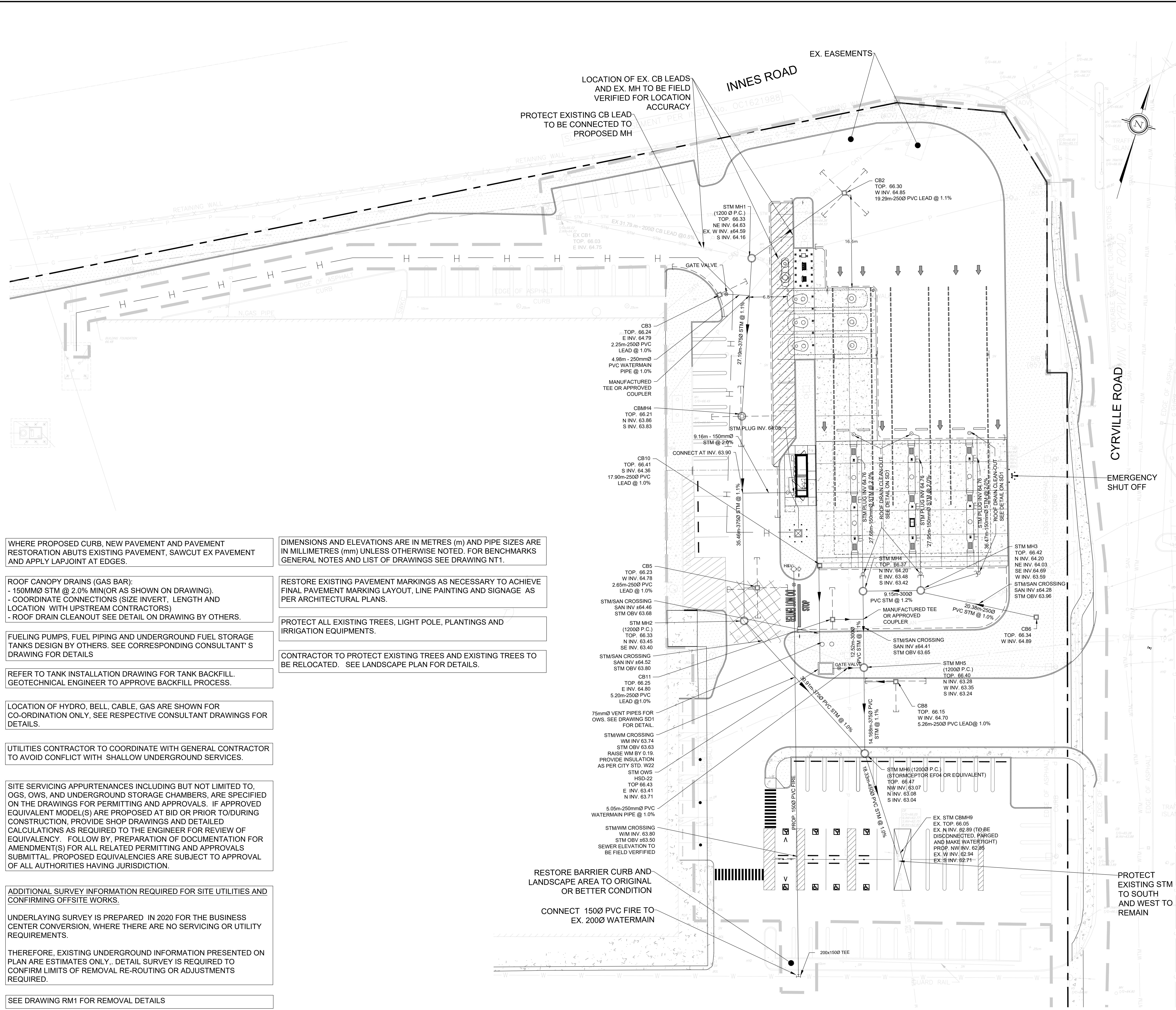
SCALE: 1:250 DATE: NOVEMBER 2025

PROJECT NUMBER: 211-12161 DWG NUMBER: SG1

LICENCED PROFESSIONAL ENGINEER
S. MANORIK
100631937
2025-11-27
PROVINCE OF ONTARIO

REGISTERED PROFESSIONAL ENGINEER
I.M. JAFFERIE
100164153
2025-11-27
PROVINCE OF ONTARIO

FILENAME: C:\Users\jmanorik\OneDrive - WSP\Documents\Projects\211-12161-Costco Gloucester\Business Centre Gas Bar\ENR\ENR_211-12161_SG1.dwg
PLOTDATE: Nov 27, 2025 1:38pm CAD/2025



LEGEND

| | |
|--|-----------------------------------|
| | LIMIT OF CONSTRUCTION |
| | PROPERTY LINE |
| | FINISHED FLOOR ELEVATION |
| | BARRIER CURB OPSD 600.110 |
| | DEPRESSED CURB |
| | CART STORAGE |
| | EXISTING STORM SEWER |
| | EXISTING SANITARY SEWER |
| | EXISTING TELECOM. CABLE |
| | EXISTING CATCHBASIN |
| | EXISTING MANHOLE |
| | EXISTING WATER VALVE |
| | EXISTING GAS MANHOLE |
| | REMOVALS |
| | EXISTING LIGHT POLE |
| | PROPOSED STORM MANHOLE |
| | PROPOSED STORM CATCHBASIN MANHOLE |
| | PROPOSED CATCHBASIN |
| | PROPOSED WATER VALVE |
| | PROPOSED FIRE HYDRANT |
| | PROPOSED SUBDRAIN |
| | PROPOSED ROAD PAINTING |
| | GAS BAR CANOPY |
| | CONCRETE SIDEWALK |
| | LANDSCAPE AREA |

0 5m 10m 20m 25m
SCALE: 1:250

WHERE PROPOSED CURB, NEW PAVEMENT AND PAVEMENT RESTORATION ABUTS EXISTING PAVEMENT, SAWCUT EX PAVEMENT AND APPLY LAPJOINT AT EDGES.

ROOF CANOPY DRAINS (GAS BAR):
- 150MMØ STM @ 2.0% MIN/OR AS SHOWN ON DRAWING.
- COORDINATE CONNECTIONS (SIZE INVERT, LENGTH AND LOCATION WITH UPSTREAM CONTRACTORS)
- ROOF DRAIN CLEANOUT SEE DETAIL ON DRAWING BY OTHERS.

FUELING PUMPS, FUEL PIPING AND UNDERGROUND FUEL STORAGE TANKS DESIGN BY OTHERS. SEE CORRESPONDING CONSULTANT'S DRAWING FOR DETAILS

REFER TO TANK INSTALLATION DRAWING FOR TANK BACKFILL. GEOTECHNICAL ENGINEER TO APPROVE BACKFILL PROCESS.

LOCATION OF HYDRO, BELL, CABLE, GAS ARE SHOWN FOR CO-ORDINATION ONLY, SEE RESPECTIVE CONSULTANT DRAWINGS FOR DETAILS.

UTILITIES CONTRACTOR TO COORDINATE WITH GENERAL CONTRACTOR TO AVOID CONFLICT WITH SHALLOW UNDERGROUND SERVICES.

SITE SERVICING APPURTENANCES INCLUDING BUT NOT LIMITED TO, OGS, OWS, AND UNDERGROUND STORAGE CHAMBERS, ARE SPECIFIED ON THE DRAWINGS FOR PERMITTING AND APPROVALS. IF APPROVED EQUIVALENT MODEL(S) ARE PROPOSED AT BID OR PRIOR TO/DURING CONSTRUCTION, PROVIDE SHOP DRAWINGS AND DETAILED CALCULATIONS AS REQUIRED TO THE ENGINEER FOR REVIEW OF EQUIVALENCY. FOLLOW BY PREPARATION OF DOCUMENTATION FOR AMENDMENT(S) FOR ALL RELATED PERMITTING AND APPROVALS SUBMITTAL. PROPOSED EQUIVALENCIES ARE SUBJECT TO APPROVAL OF ALL AUTHORITIES HAVING JURISDICTION.

ADDITIONAL SURVEY INFORMATION REQUIRED FOR SITE UTILITIES AND CONFIRMING OFFSITE WORKS.

UNDERLAYING SURVEY IS PREPARED IN 2020 FOR THE BUSINESS CENTER CONVERSION, WHERE THERE ARE NO SERVICING OR UTILITY REQUIREMENTS.

THEREFORE, EXISTING UNDERGROUND INFORMATION PRESENTED ON PLAN ARE ESTIMATES ONLY. DETAIL SURVEY IS REQUIRED TO CONFIRM LIMITS OF REMOVAL RE-ROUTING OR ADJUSTMENTS REQUIRED.

SEE DRAWING RM1 FOR REMOVAL DETAILS

DIMENSIONS AND ELEVATIONS ARE IN METRES (m) AND PIPE SIZES ARE IN MILLIMETRES (mm) UNLESS OTHERWISE NOTED. FOR BENCHMARKS GENERAL NOTES AND LIST OF DRAWINGS SEE DRAWING NT.1.

RESTORE EXISTING PAVEMENT MARKINGS AS NECESSARY TO ACHIEVE FINAL PAVEMENT MARKING LAYOUT, LINE PAINTING AND SIGNAGE AS PER ARCHITECTURAL PLANS.

PROTECT ALL EXISTING TREES, LIGHT POLE, PLANTINGS AND IRRIGATION EQUIPMENTS.

CONTRACTOR TO PROTECT EXISTING TREES AND EXISTING TREES TO BE RELOCATED. SEE LANDSCAPE PLAN FOR DETAILS.

RESTORE BARRIER CURB AND LANDSCAPE AREA TO ORIGINAL OR BETTER CONDITION

CONNECT 150Ø PVC FIRE TO EX. 200Ø WATERMAIN

EMERGENCY SHUT OFF

| No. | REVISIONS TO DRAWING | BY | DATE | APPR. |
|-----|-------------------------------|-----|------------|-------|
| 7. | ISSUED FOR SITE PLAN APPROVAL | SM | 11-27-2025 | IJ |
| 6. | ISSUED FOR BID | SM | 05-16-2025 | IJ |
| 5. | ISSUED FOR PERMIT/BID | SM | 04-30-2025 | IJ |
| 4. | ISSUED FOR QA3 | SM | 04-21-2025 | |
| 3. | ISSUED FOR QA2 | SM | 04-09-2025 | |
| 2. | ISSUED FOR QA | NCW | 03-27-2025 | |
| 1. | ISSUED FOR GREEN INK | NCW | 02-19-2025 | |

CLIENT: **COSTCO WHOLESALE**

MUNICIPALITY: **CITY OF OTTAWA**

PROJECT TITLE: **COSTCO GLOUCESTER GAS BAR**
1900 CYRVILLE RD, ON, K1B 3V5

SHEET TITLE: **SITE SERVICING PLAN**

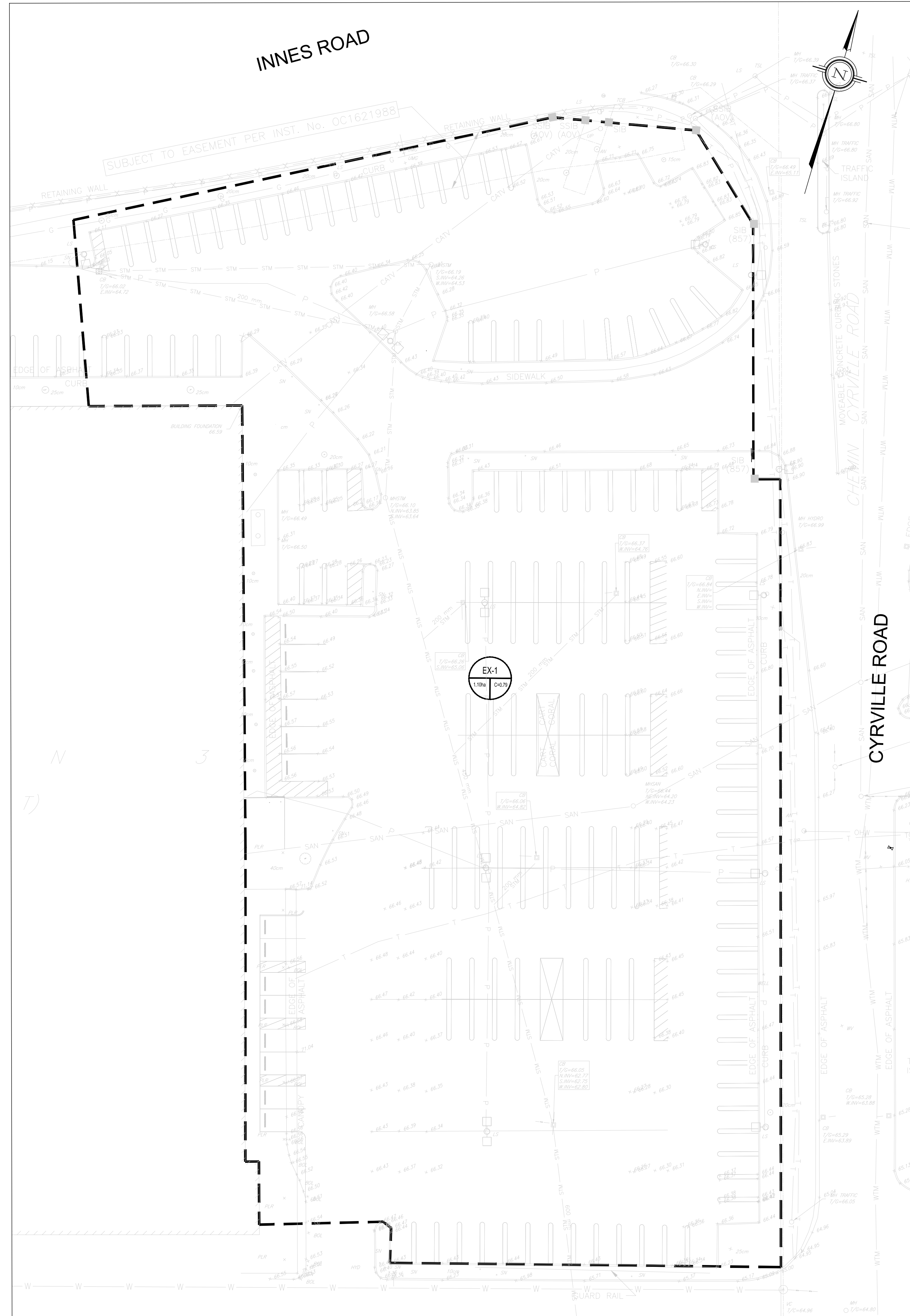
wsp

LICENSED PROFESSIONAL ENGINEER
S. YANOVSKY
100631937
2025-11-27
PROVINCE OF ONTARIO

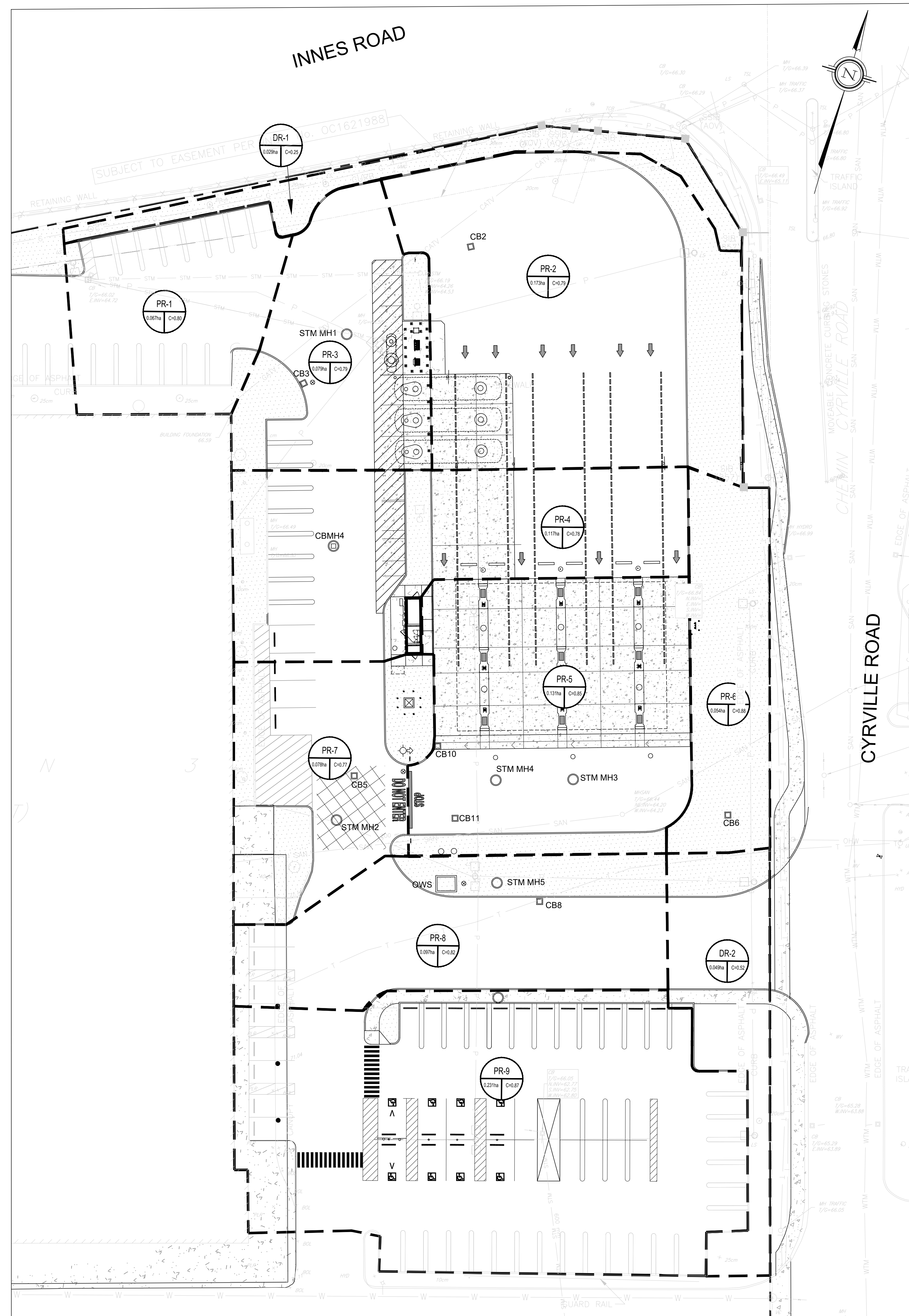
LICENSED PROFESSIONAL ENGINEER
S. YANOVSKY
100631937
2025-11-27
PROVINCE OF ONTARIO

| | | |
|-----------------------------|-----------------------|--------------------------|
| DESIGNED S.M. | DRAWN J.T. | CHECKED I.J.N.C.W. |
| SCALE 1:250 | DATE NOVEMBER 2025 | DWG. NUMBER 211-12161 |
| PROJECT NUMBER 211-12161 | SS1 | |

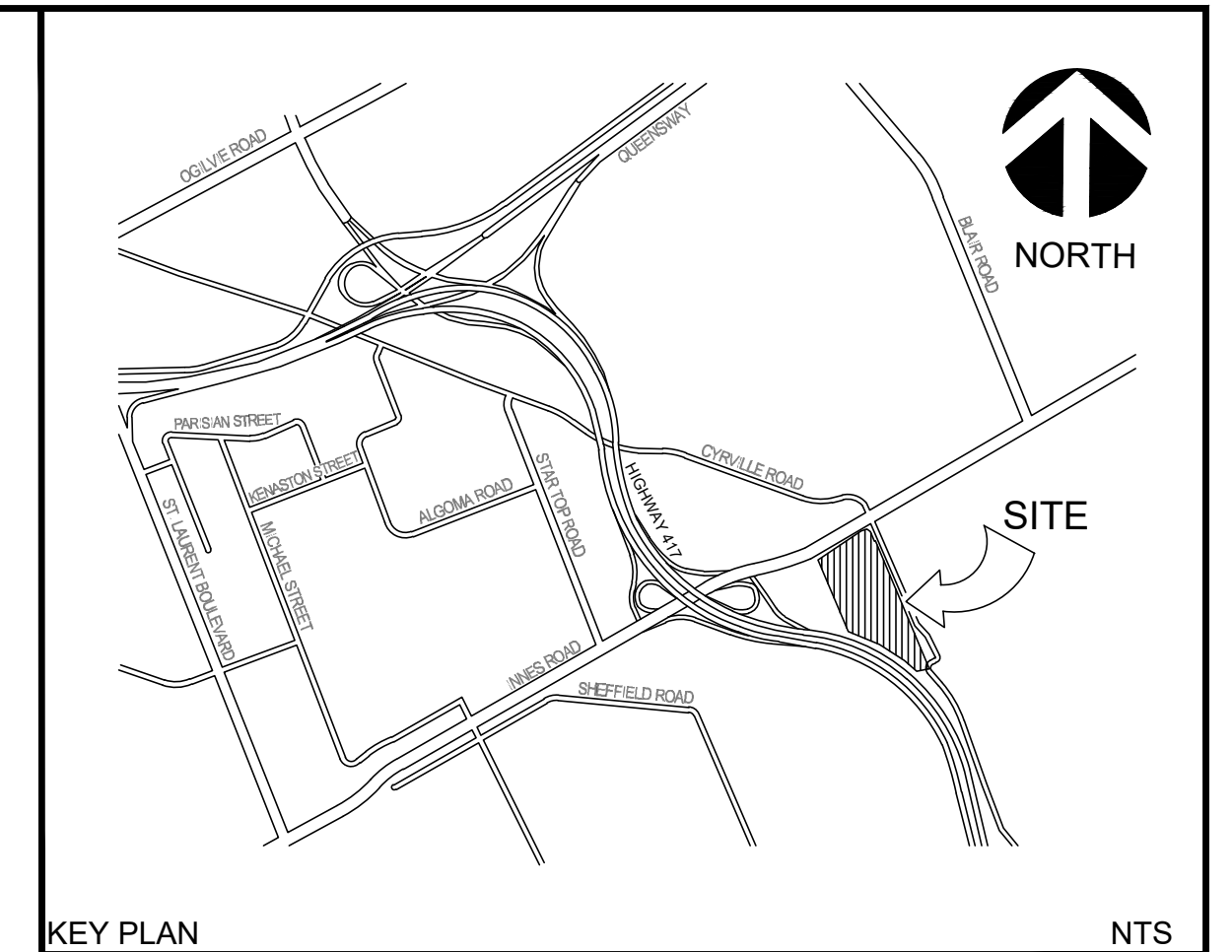
FILENAME: C:\Users\jtanovsk\OneDrive - WSP Canada\Projects\AMER\GLOUCESTER\211-12161-00\Drawings\Business Center\Site Servicing\211-12161_SSI_SSI.dwg
PLOT DATE: Nov 27, 2025 12:30m CADT01002



1 EXISTING DRAINAGE AREA PLAN
SCALE: 1:300



2 PROPOSED DRAINAGE AREA PLAN
SCALE: 1:300



LEGEND

| | | |
|---|-----|---|
| — | FFE | FINISHED FLOOR ELEVATION |
| — | — | BARRIER CURB OPSD 600.110 |
| — | — | DEPRESSED CURB |
| — | — | CART STORAGE (SEE ARCH. DRAWINGS FOR DETAILS) |
| — | — | CONC. PAVING |
| □ | □ | LIGHT POLE (B.O.) |
| □ | □ | CATCHBASIN |
| ○ | ○ | CATCHBASIN MANHOLE |
| ○ | ○ | STORM MANHOLE |
| ● | ● | SANITARY MANHOLE |
| ○ | ○ | EMERGENCY SPILL SHUTOFF VALVE |
| ○ | ○ | WATER VALVE |
| ○ | ○ | HYDRANT |
| — | — | PROPERTY LINE |
| ○ | ○ | EXISTING WATER VALVE |
| ○ | ○ | EXISTING GAS MANHOLE |
| — | — | GAS BAR CANOPY |
| — | — | DRAINAGE AREA BOUNDARY |
| ○ | ○ | DRAINAGE AREA NAME |
| ○ | ○ | RUNOFF COEFFICIENT |

AREA IN HECTARES:

| | |
|---|-------------------|
| □ | CONCRETE SIDEWALK |
| □ | LANDSCAPE AREA |



| No. | REVISIONS TO DRAWING | BY | DATE | APPR. |
|-----|-------------------------------|-----|------------|-------|
| 6. | ISSUED FOR SITE PLAN APPROVAL | SM | 11-27-2025 | IJ |
| 5. | ISSUED FOR BID | SM | 05-16-2025 | IJ |
| 4. | ISSUED FOR PERMIT/BID | SM | 04-30-2025 | IJ |
| 3. | ISSUED FOR QA3 | SM | 04-21-2025 | |
| 2. | ISSUED FOR QA2 | SM | 04-09-2025 | |
| 1. | ISSUED FOR QA | NCW | 03-27-2025 | |

CLIENT: **COSTCO WHOLESALE**

MUNICIPALITY: **CITY OF OTTAWA**

PROJECT TITLE: **COSTCO GLOUCESTER GAS BAR**
1900 CYRVILLE RD, ON, K1B 3V5

SHEET TITLE: **DRAINAGE AREA PLAN**

wsp

| | | |
|---------------------------|---------------------|---------------------|
| | | |
| DESIGNED: S.M. | DRAWN: J.T. | CHECKED: I.J.N.C.W. |
| SCALE: 1:250 | DATE: NOVEMBER 2025 | |
| PROJECT NUMBER: 211-12161 | DWG NUMBER: ST1 | |

FILENAME: C:\Users\jnt\OneDrive\Documents\Projects\WATER\OT\211-12161-00\Drawings\Business Center Gas Bar\DWG\211-12161-ST1.dwg
 PLOT DATE: Nov 27 2025 1:38pm CDT/EST