



Chick-fil-A
 5200 Buffington Road
 Atlanta, Georgia 30349-2998

exp Services Inc.
 T: +1.905.793.9800 | F: +1.905.793.0641
 1595 Clark Boulevard
 Brampton, ON L6T 4V1
 Canada

www.exp.com



- BUILDINGS • EARTH & ENVIRONMENT • ENERGY •
- INDUSTRIAL • INFRASTRUCTURE • SUSTAINABILITY •



CHICK-FIL-A COLLEGE SQUARE

1984 Baseline Road
Ottawa, ON

FSR#30088

BUILDING TYPE / SIZE: IP02 SE
 RELEASE:

REVISION SCHEDULE		
NO.	DATE	DESCRIPTION
A	2025-09-17	ISSUED FOR UTILITY REVIEW
B	2025-09-23	ISSUED FOR SPA
C	2025-11-14	ISSUED FOR SPA
D	2026-05-25	AS PER CITY COMMENT

CONSULTANT PROJECT # BRM0023002042-WO
 PROJECT STATUS SPA
 DATE SEPTEMBER 2025
 DRAWN BY J.K.

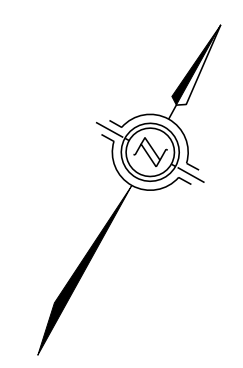
Information contained on this drawing and in all digital files produced for above named project may not be reproduced in any manner without express written or verbal consent from authorized project representatives.

SHEET
 SITE SERVICING PLAN

SHEET NUMBER

PS100

FILE NUMBER D07-12-25-0159
 PLAN NUMBER 19453

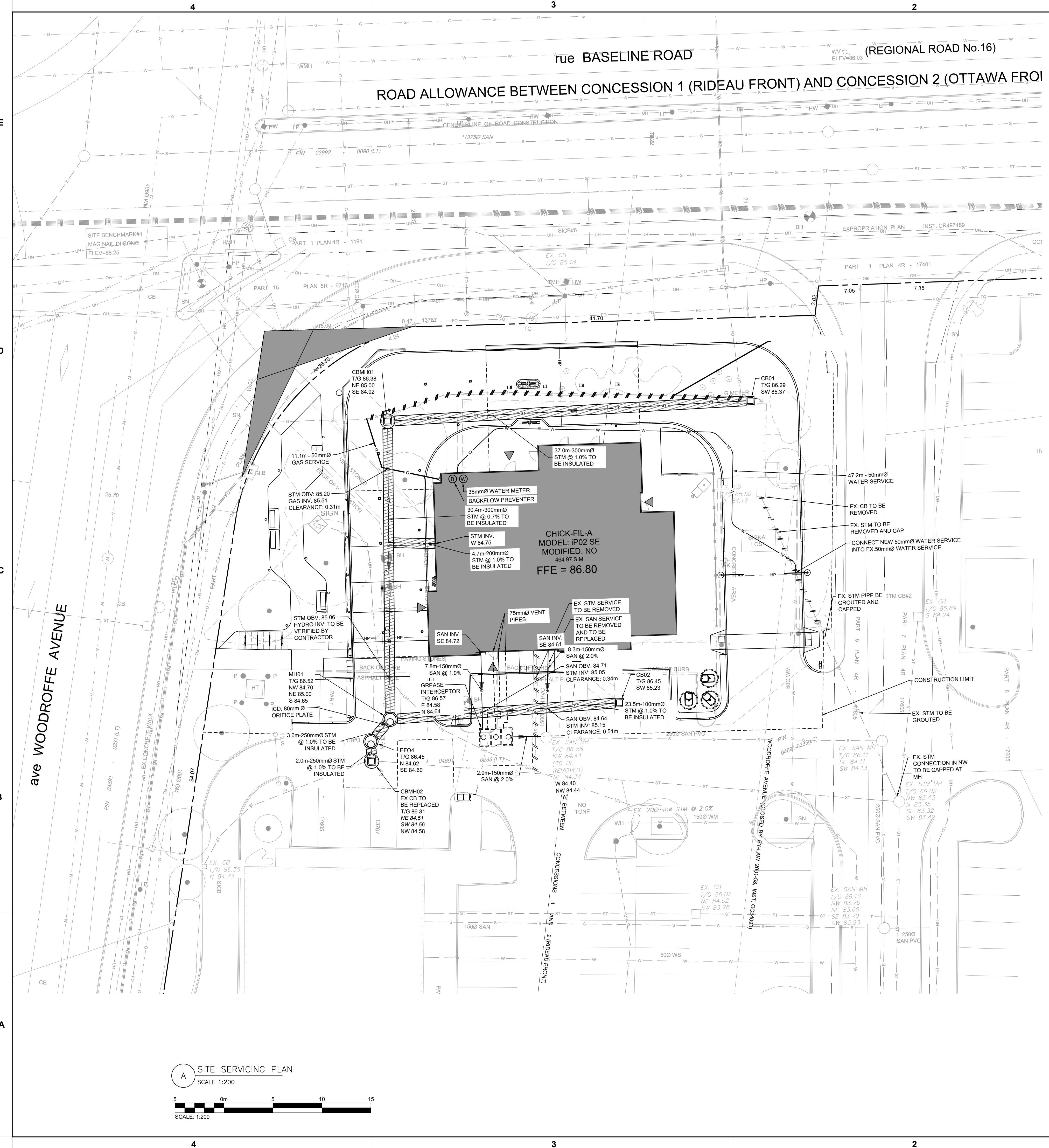


GENERAL NOTES:

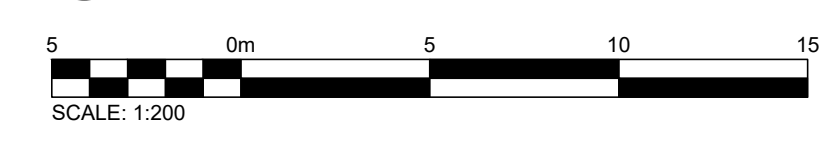
- ALL ELEVATIONS ARE IN METRES, UNLESS NOTED OTHERWISE.
- ALL DIMENSIONS ARE IN MILLIMETRES, UNLESS NOTED OTHERWISE.
- DRAWING PRODUCED FROM J. D. BARNES LTD. DRAWING 25-10-063-00 DATED JULY 7, 2025. REFER TO SURVEY FOR BENCHMARK AND GEODETIC INFORMATION.
- ALL DIMENSIONS MUST BE VERIFIED BY THE GC PRIOR TO CONSTRUCTION. ANY DISCREPANCIES MUST BE BROUGHT TO THE ATTENTION OF CHICK-FIL-A'S REPRESENTATIVE.
- ALL WORK TO BE DONE BY THE GC UNLESS NOTED OTHERWISE.
- DRAWINGS ARE TO BE USED IN CONJUNCTION WITH SPECIFICATIONS.
- ALL WORK IS TO BE COMPLETED AS PER PROVINCIAL AND LOCAL REGULATIONS.
- EVERYTHING TO BE CONSIDERED NEW UNLESS NOTED OTHERWISE.
- MAKE GOOD ALL AREAS DISTURBED DURING CONSTRUCTION.
- GC IS RESPONSIBLE FOR ALL LOCATES BEFORE CONSTRUCTION START.
- CONTRACTOR TO PERFORM POST-CONSTRUCTION CCTV INVESTIGATION OF STORM AND SANITARY PIPES.
- CONTRACTOR TO PERFORM A CONDITION ASSESSMENT OF THE EXISTING RECEIVING SEWERS INCLUDING CCTV INVESTIGATION. ANY CONCERN SHALL BE NOTIFIED IMMEDIATELY TO CONSULTANT.
- THE EXISTING STORM, SANITARY, AND WATER SERVICES MUST BE IN A GREAT CONDITION IF THE SERVICES ARE REUSED.

LEGEND

- HW EX. HANDWELL
- BH EX. BOREHOLE
- SN EX. SIGN
- P EX. POST/BOLLARD
- EX. TELECOMMUNICATION MANHOLE
- EX. TELECOMMUNICATION CHAMBER
- ☆ EX. TELECOMMUNICATION MARK
- EX. SHRUB
- CONC EX. CONCRETE
- ELEV EX. ELEVATION
- CB EX. CATCH BASIN
- MH EX. MANHOLE
- SAN EX. MANHOLE
- MH EX. MANHOLE
- WK EX. WATER KEY
- WH EX. WATER HYDRANT
- EX. TREE
- HT EX. HYDRO JUNCTION BOX
- HM EX. HYDRO MAN HOLE
- HP EX. HYDRO POLE
- TC EX. TELEPHONE CHAMBER
- GLB EX. GROUND LEVEL BOX
- PROPERTY LINE
- EX. CONC. CURB
- FO EX. UNDERGROUND FIBRE OPTICS
- ST EX. STORM SEWER
- S EX. SANITARY SEWER
- W EX. WATER MAINS
- G EX. NATURAL GAS
- OH EX. OVERHEAD HYDRO
- UH EX. UNDERGROUND HYDRO
- UH EX. UNDERGROUND CABLE
- UH EX. UNDERGROUND TELEPHONE
- NEW CONCRETE CURB
- NEW CURB DEPRESSION
- NEW YARD LIGHT
- NEW STORM MH
- NEW SANITARY MH
- NEW STORM CB
- NEW STORM CBMH
- △ MAIN ENTRANCE
- △ ALTERNATE ENTRANCE
- ST NEW STORM SEWER
- S NEW SANITARY SEWER
- W NEW WATER SERVICE
- G NEW GAS SERVICE
- UH NEW HYDRO SERVICE
- UB NEW BELL SERVICE
- /// REMOVAL
- PIPE INSULATION TYP.



A SITE SERVICING PLAN
 SCALE: 1:200



E:\BRM\BRM-23002042-WO\60 Execution\65 Drawings\01-30096-PS100-RC.dwg
 22 May 2026