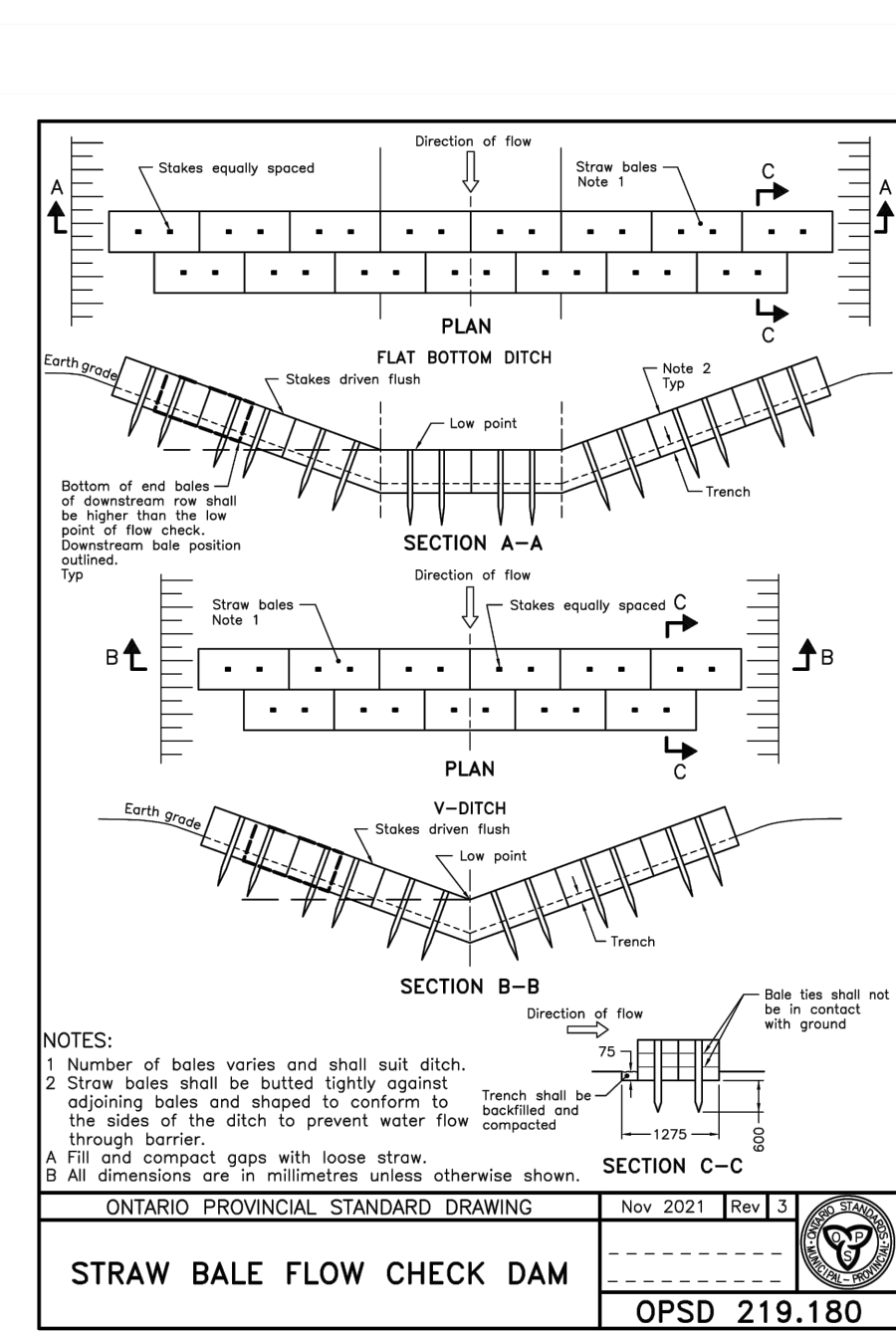
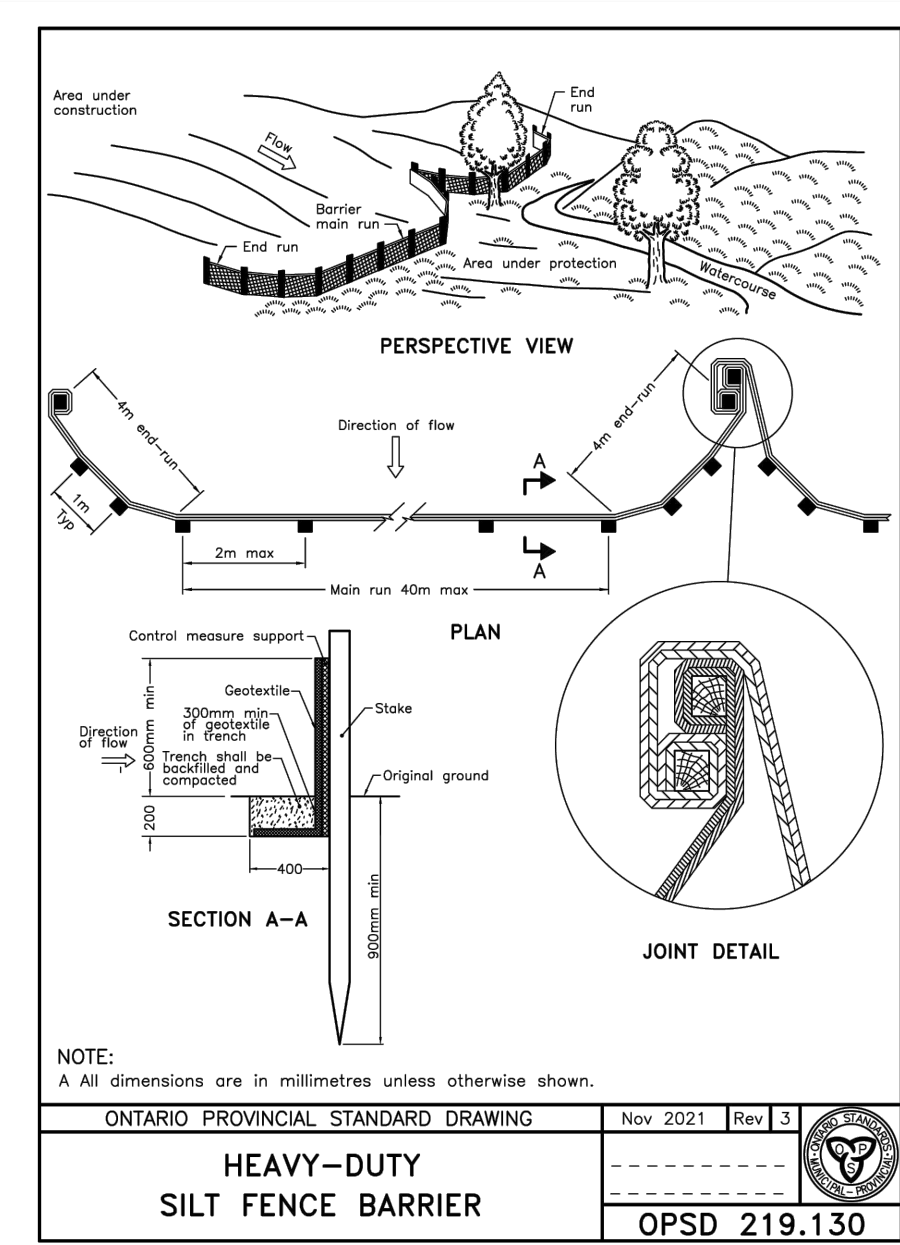


- LEGEND**
- PROPERTY BOUNDARY
  - - - LIMIT OF HAZARD LANDS
  - - - 15.0m TOP OF SLOPE SETBACK
  - - - TURTLE HABITAT SETBACK (AS PER EIS)
  - EXISTING CATCH BASIN
  - EXISTING STORM SEWER & MANHOLE
  - CATCH BASIN
  - STORM SEWER & MANHOLE
  - - - SWALE
  - - - HEAVY-DUTY SILT FENCE BARRIER
  - SS SILT SACK (OR APPROVED EQUIVALENT)
  - ▨ STRAW BALE FLOW CHECK DAM



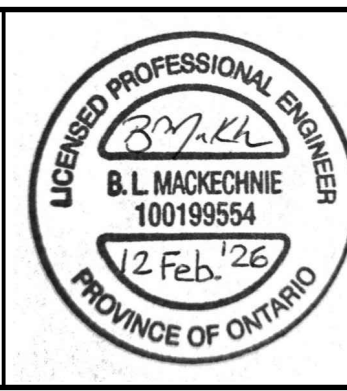
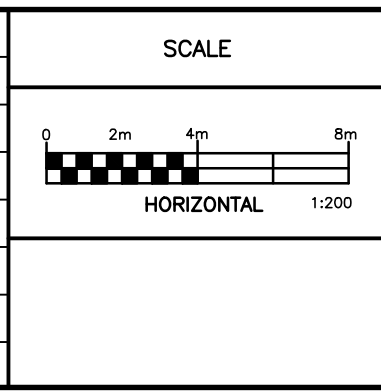
- NOTES:**
- THE CONTRACTOR SHALL IMPLEMENT EROSION AND SEDIMENT CONTROL MEASURES TO PROVIDE FOR PROTECTION OF THE AREA DRAINAGE SYSTEM AND THE ULTIMATE RECEIVING WATERCOURSE DURING CONSTRUCTION ACTIVITIES. THE CONTRACTOR ACKNOWLEDGES THAT FAILURE TO IMPLEMENT APPROPRIATE EROSION AND SEDIMENT CONTROL MEASURES MAY BE SUBJECT TO PENALTIES IMPOSED BY ANY APPLICABLE REGULATORY AGENCY.
  - LIMIT THE EXTENT OF EXPOSED SOILS AT ANY GIVEN TIME.
  - EROSION AND SEDIMENT CONTROL MEASURES SHALL BE MAINTAINED UNTIL VEGETATION HAS BEEN RE-ESTABLISHED IN ALL DISTURBED AREAS. RE-VEGETATE DISTURBED AREAS AS SOON AS POSSIBLE.
  - CONTRACTOR SHALL MINIMIZE THE AMOUNT OF STOCKPILED MATERIAL. ALL STOCKPILED SOIL SHALL BE AWAY (15 METRES OR GREATER) FROM WATERCOURSES, DRAINAGE FEATURES AND TOP OF STEEP SLOPES. THE DOWNSTREAM SIDE OF ALL STOCKPILES SHALL BE PROTECTED WITH SILT FENCE, FIBRE ROLLS OR EQUIVALENT MEASURES PRIOR TO A RAINFALL EVENT.
  - SILT SACKS ARE TO BE PLACED UNDERNEATH THE FRAME AND COVER OF ALL PROPOSED AND EXISTING CATCH BASIN AND OPEN COVER STORM MANHOLES UNTIL CONSTRUCTION IS COMPLETED.
  - HEAVY-DUTY SILT FENCE BARRIERS SHALL BE INSTALLED AS PER OPSD 219.130 WHERE INDICATED AND MAINTAINED AS REQUIRED.
  - DURING ACTIVE CONSTRUCTION PERIODS, VISUAL INSPECTIONS SHALL BE UNDERTAKEN ON A WEEKLY BASIS AND AFTER MAJOR STORM EVENTS (>25mm RAIN IN 24 HOUR PERIOD) ON SEDIMENT CONTROL BARRIERS AND ANY DAMAGE REPAIRED IMMEDIATELY.
  - EROSION AND SEDIMENT CONTROL BARRIERS SHALL ALSO BE ASSESSED (AND REPAIRED AS REQUIRED) FOLLOWING SIGNIFICANT SNOWMELT EVENTS.
  - VISUAL INSPECTIONS SHALL ALSO BE UNDERTAKEN IN ANTICIPATION OF LARGE STORM EVENTS (OR A SERIES OF RAINFALL AND/OR SNOWMELT DAYS) THAT COULD POTENTIALLY YIELD SIGNIFICANT RUNOFF VOLUMES.
  - CARE SHALL BE TAKEN TO PREVENT DAMAGE TO EROSION AND SEDIMENT CONTROLS DURING CONSTRUCTION OPERATIONS.
  - IN SOME CASES, BARRIERS MAY BE REMOVED TEMPORARILY TO ACCOMMODATE THE CONSTRUCTION OPERATIONS. THE AFFECTED BARRIERS SHALL BE REINSTATED IMMEDIATELY AFTER CONSTRUCTION OPERATIONS ARE COMPLETED.
  - SEDIMENT CONTROL DEVICES SHALL BE CLEANED OF ACCUMULATED SEDIMENTATION AS REQUIRED AND REPLACED AS NECESSARY.
  - DURING THE COURSE OF CONSTRUCTION, IF THE ENGINEER BELIEVES THAT ADDITIONAL PREVENTION METHODS ARE REQUIRED TO CONTROL EROSION AND SEDIMENTATION, THE CONTRACTOR SHALL IMPLEMENT ADDITIONAL MEASURES, AS REQUIRED, TO THE SATISFACTION OF THE ENGINEER.
  - CONSTRUCTION AND MAINTENANCE REQUIREMENTS FOR EROSION AND SEDIMENT CONTROLS ARE TO COMPLY WITH OPSD 805.
  - MUD MATS SHALL BE INSTALLED AT ALL CONSTRUCTION ENTRANCES.
  - INSPECTION AND MAINTENANCE OF TEMPORARY EROSION MEASURES SHALL CONTINUE UNTIL THEY ARE NO LONGER REQUIRED.
  - THE CONTRACTOR SHALL ENSURE THAT RECORDS OF INSPECTION ARE TAKEN, INCLUDING INSPECTOR'S NAME, DATE OF INSPECTION, VISUAL OBSERVATIONS, AND ANY NECESSARY REMEDIAL MEASURES TAKEN TO MAINTAIN INTERIM ESC MEASURES.

**NOTES**

THE POSITION OF ALL POLE LINES, CONDUITS, WATERMANS, SEWERS AND OTHER UNDERGROUND AND OVERGROUND UTILITIES AND STRUCTURES IS NOT NECESSARILY SHOWN ON THE CONTRACT DRAWINGS, AND WHERE SHOWN, THE ACCURACY OF THE POSITION OF SUCH UTILITIES AND STRUCTURES IS NOT GUARANTEED. BEFORE STARTING WORK, DETERMINE THE EXACT LOCATION OF ALL SUCH UTILITIES AND STRUCTURES AND ASSUME ALL LIABILITY FOR DAMAGE TO THEM.

GEODETIC SURVEY DERIVED FROM COSINE STATION 0011968U054. LOCATION DESCRIPTION: OLD HIGHWAY 17 BRIDGE OVER CARP RIVER ON CARP-STITTSVILLE ROAD, 0.2 KM SOUTH OF C.N.R. CROSSING IN VILLAGE OF CARP. TABLE IN TOP OF WEST WALL, 30 CM FROM NORTH END, 24 CM FROM WEST EDGE. VERTICAL CONTROL DATA, DATUM: CGVD2878, FIRST ORDER, ELEVATION: 93.861. COORDINATE SYSTEM: MTM ZONE 9; NAD 83 DATUM (CAN83-9)

NO.	REVISION DESCRIPTION	DATE	BY
2	REVISED PER CITY COMMENTS	12/02/26	BLM
1	ISSUED FOR REVIEW	21/11/25	BLM



**Robinson**  
Land Development

2936 Baseline Road,  
Suite 200, Ottawa, ON  
K2H 1B3  
(613) 592-6060 rcii.com

DESIGN	BLM
CHECKED	SG
DRAWN	BLM
CHECKED	SG
APPROVED	BLM

**INVERNESS HOMES**  
38 AURIGA DRIVE, SUITE 200  
OTTAWA, ON K2E 8A6

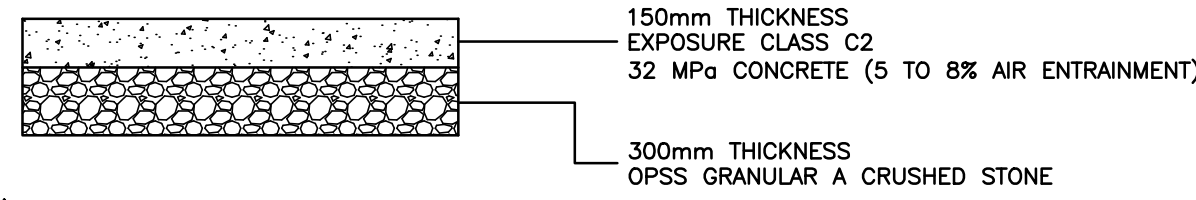
391 HILVERSUM LANE  
CARP, ON

**NOT FOR CONSTRUCTION**

**EROSION AND SEDIMENT CONTROL PLAN**

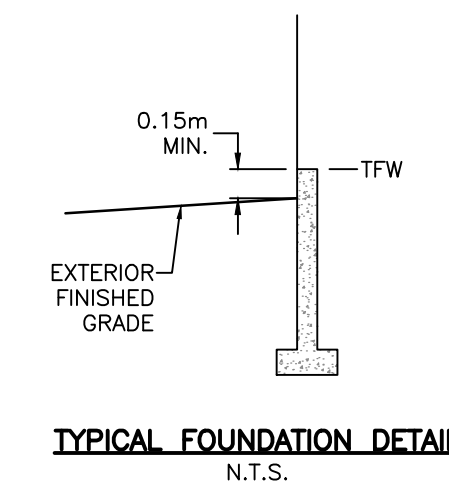
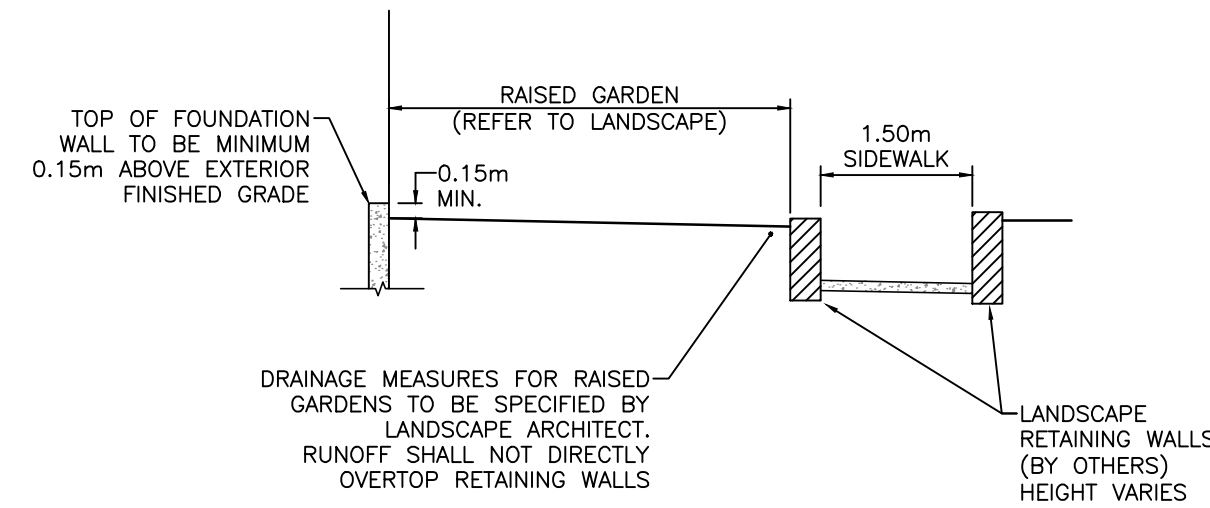
PROJECT No. 25094  
SURVEY ROBINSON CONSULTANTS  
DATED FEB. 2026  
DWG. No. 25094-ESC1  
PLAN No. XXXX

FILE No. D07-12-25-0155

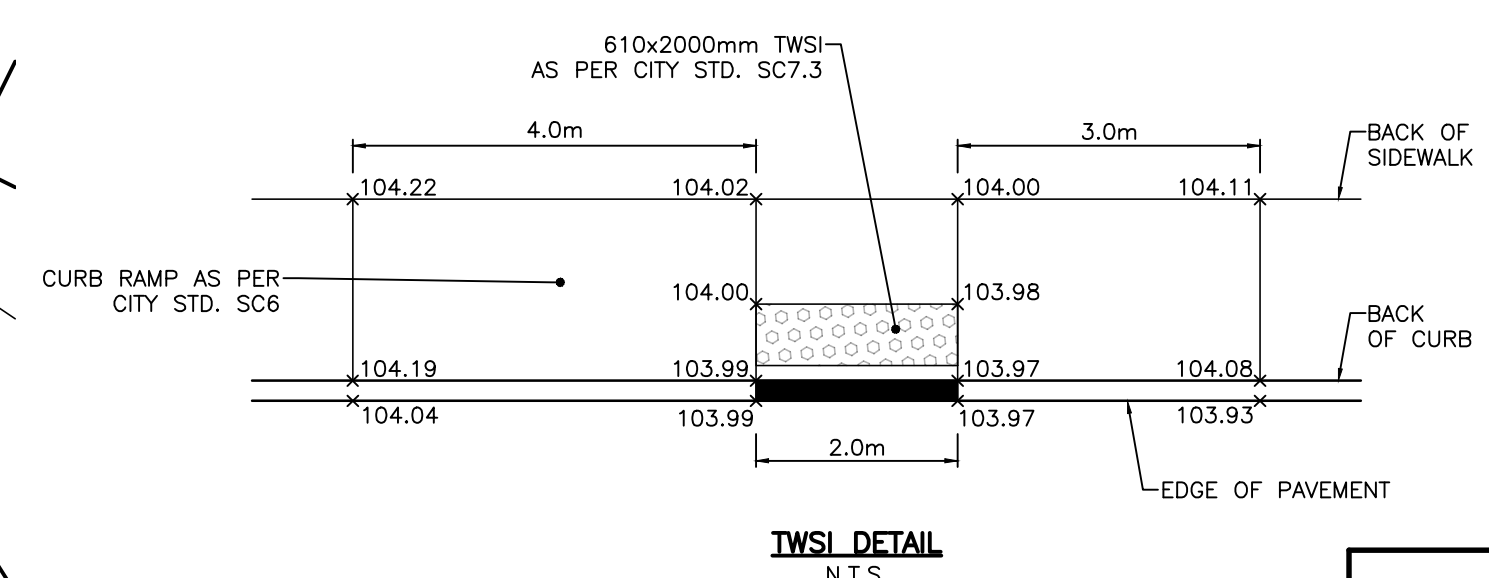
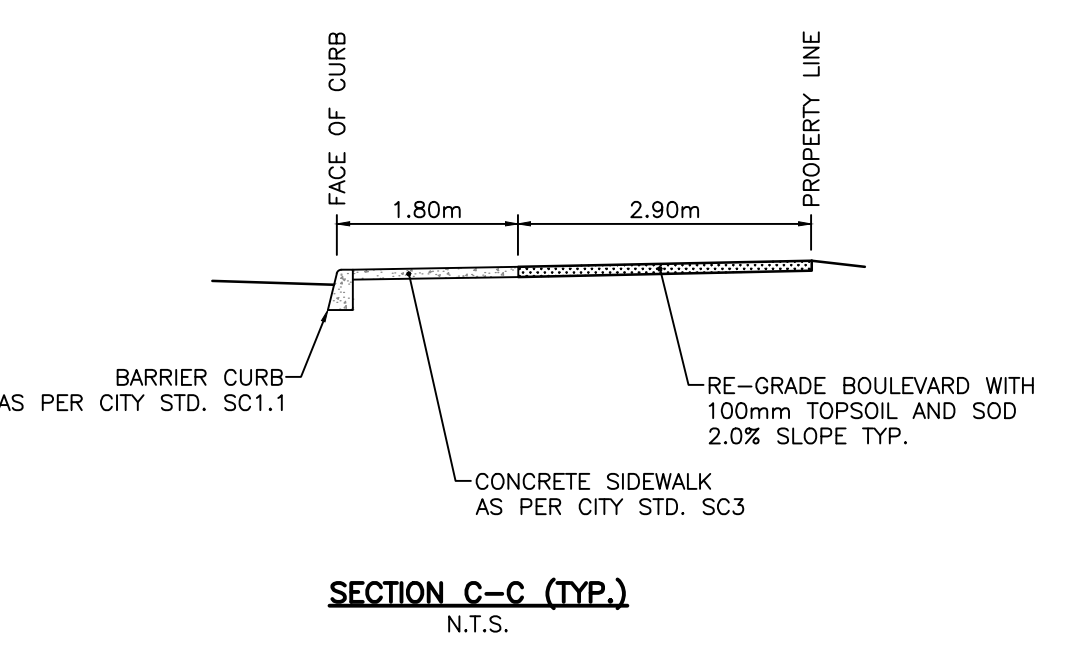
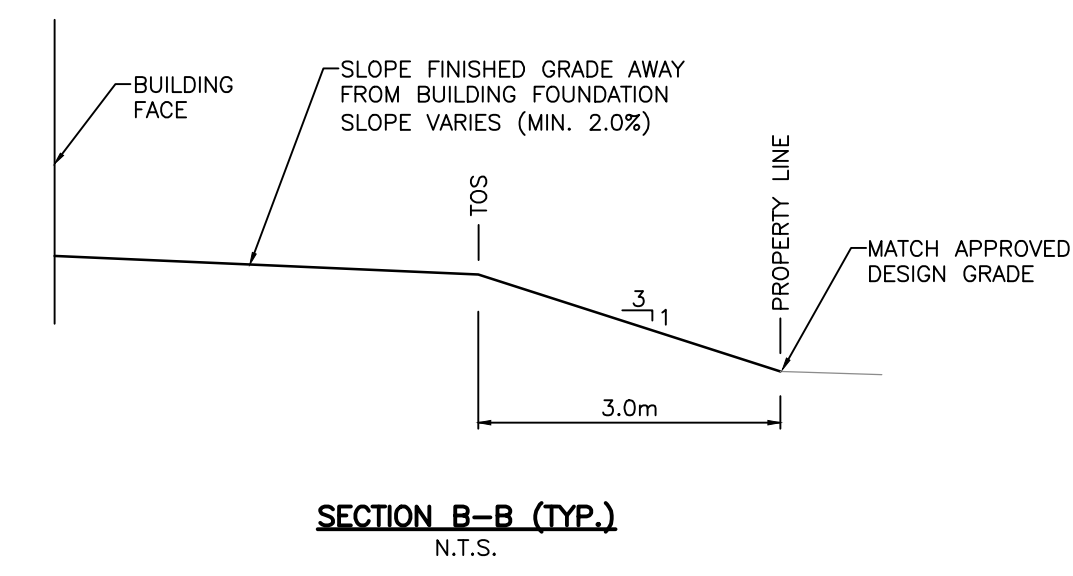
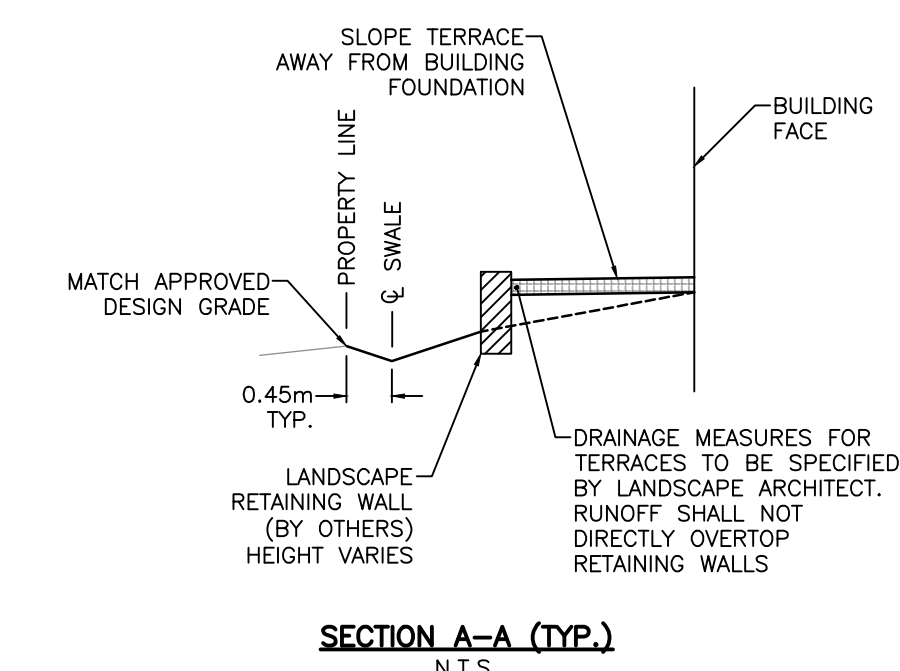
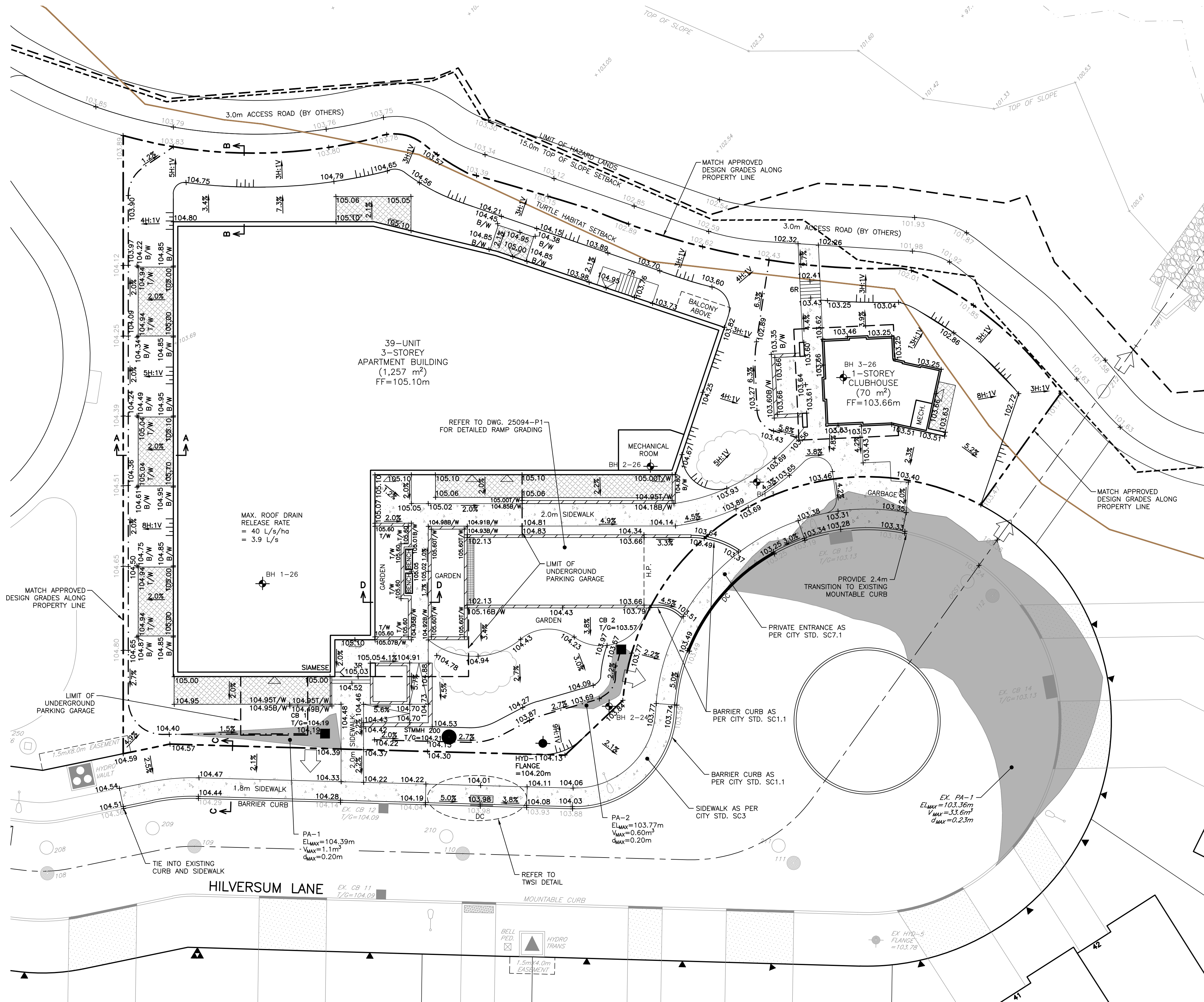
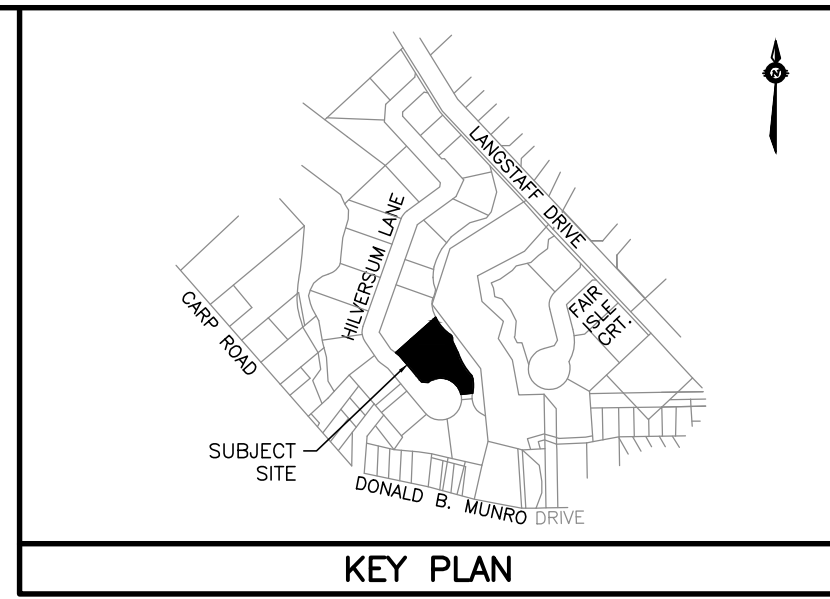


NOTES:  
1. REFER TO GEOTECHNICAL INVESTIGATION PREPARED BY PATERSON GROUP, DATED FEBRUARY 11, 2026.  
2. GEOTECHNICAL CONSULTANT TO REVIEW SUBGRADE PRIOR TO PLACEMENT OF GRANULARS.

**PARKING GARAGE RAMP STRUCTURE DETAIL**  
N.T.S.



**TYPICAL FOUNDATION DETAIL**  
N.T.S.



- LEGEND**
- PROPERTY BOUNDARY
  - LIMIT OF HAZARD LANDS
  - 15.0m TOP OF SLOPE SETBACK
  - TURTLE HABITAT SETBACK (AS PER EIS)
  - +103.00 EXISTING ELEVATION
  - x104.00 PROPOSED GRADE
  - x104.00 APPROVED DESIGN GRADE
  - 2.0% PROPOSED DRAINAGE SLOPE & DIRECTION
  - 3R PROPOSED NUMBER OF RISERS
  - EXISTING HYDRANT
  - EXISTING CATCH BASIN
  - EXISTING SANITARY MANHOLE
  - EXISTING STORM MANHOLE
  - EXISTING LIGHT STANDARD
  - PROPOSED HYDRANT
  - CATCH BASIN
  - STORM MANHOLE
  - ▽ BUILDING ENTRANCE
  - ◆ BOREHOLE (REFER TO GEOTECHNICAL REPORT)
  - ||| TERRACING (3H:1V MAX.)
  - SWALE
  - RETAINING WALL
  - H.P. HIGH POINT
  - DC DEPRESSED CURB WITH TWSI
  - MAJOR OVERLAND FLOW ROUTE
  - MAX. STATIC PONDING LIMIT
  - PA-1 PONDING AREA ID
  - E<sub>max</sub> MAXIMUM STATIC PONDING ELEVATION
  - V<sub>max</sub> MAXIMUM AVAILABLE SURFACE STORAGE
  - d<sub>max</sub> MAXIMUM STATIC PONDING DEPTH
  - ☁ SNOW STORAGE (REFER TO SITE PLAN)

NOTE: NO SURFACE PONDING OCCURS DURING THE 2-YEAR THROUGH 100-YEAR DESIGN EVENTS.

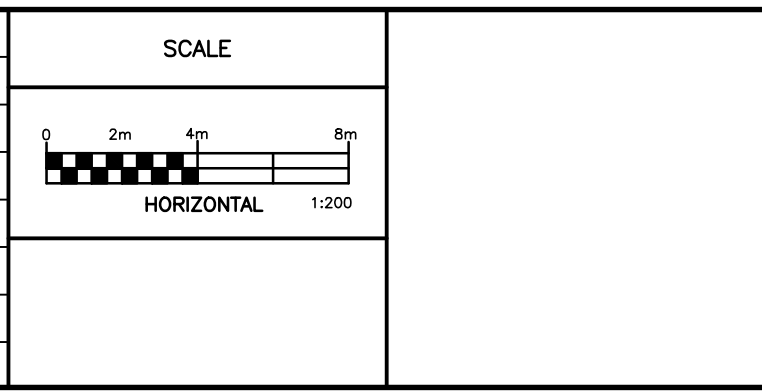
**NOT FOR CONSTRUCTION**

**NOTES**

THE POSITION OF ALL POLE LINES, CONDUITS, WATERMANS, SEWERS AND OTHER UNDERGROUND AND OVERGROUND UTILITIES AND STRUCTURES IS NOT NECESSARILY SHOWN ON THE CONTRACT DRAWINGS, AND WHERE SHOWN, THE ACCURACY OF THE POSITION OF SUCH UTILITIES AND STRUCTURES IS NOT GUARANTEED. BEFORE STARTING WORK, DETERMINE THE EXACT LOCATION OF ALL SUCH UTILITIES AND STRUCTURES AND ASSUME ALL LIABILITY FOR DAMAGE TO THEM.

GEODETIC SURVEY DERIVED FROM COSINE STATION 0011968U054. LOCATION DESCRIPTION: OLD HIGHWAY 17 BRIDGE OVER CARP RIVER ON CARP-STITTSVILLE ROAD, 0.2 KM SOUTH OF C.N.R. CROSSING IN VILLAGE OF CARP. TABLE IN TOP OF WEST WALL, 30 CM FROM NORTH END, 24 CM FROM WEST EDGE. VERTICAL CONTROL DATA, DATUM: CGVD2878, FIRST ORDER, ELEVATION: 93.861. COORDINATE SYSTEM: MTM ZONE 9; NAD 83 DATUM (CAN83-9)

NO.	REVISION DESCRIPTION	DATE	BY
2	REVISED PER CITY COMMENTS	12/02/26	BLM
1	ISSUED FOR REVIEW	21/11/25	BLM



**Robinson Land Development**

2936 Baseline Road, Suite 200, Ottawa, ON K2H 1B3  
(613) 592-6060 rcli.com

**Professional Engineer**  
B.L. HACHECHINE  
100199554  
12 Feb. 26  
PROVINCE OF ONTARIO

DESIGN	BLM
CHECKED	SG
DRAWN	BLM
CHECKED	SG
APPROVED	BLM

**INVERNESS HOMES**  
38 AURIGA DRIVE, SUITE 200  
OTTAWA, ON K2E 8A6

**391 HILVERSUM LANE**  
CARP, ON

**GRADING AND DRAINAGE PLAN**

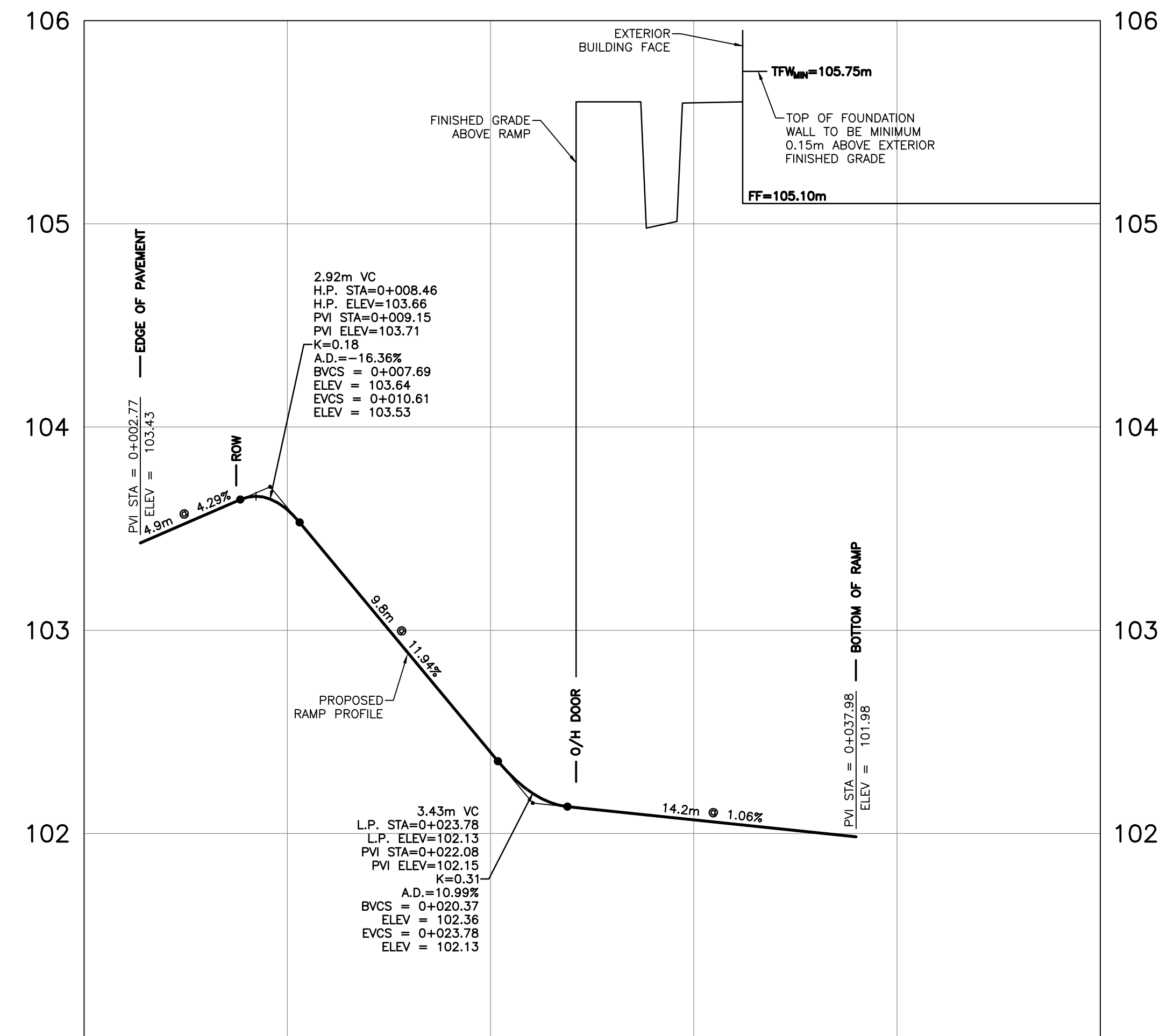
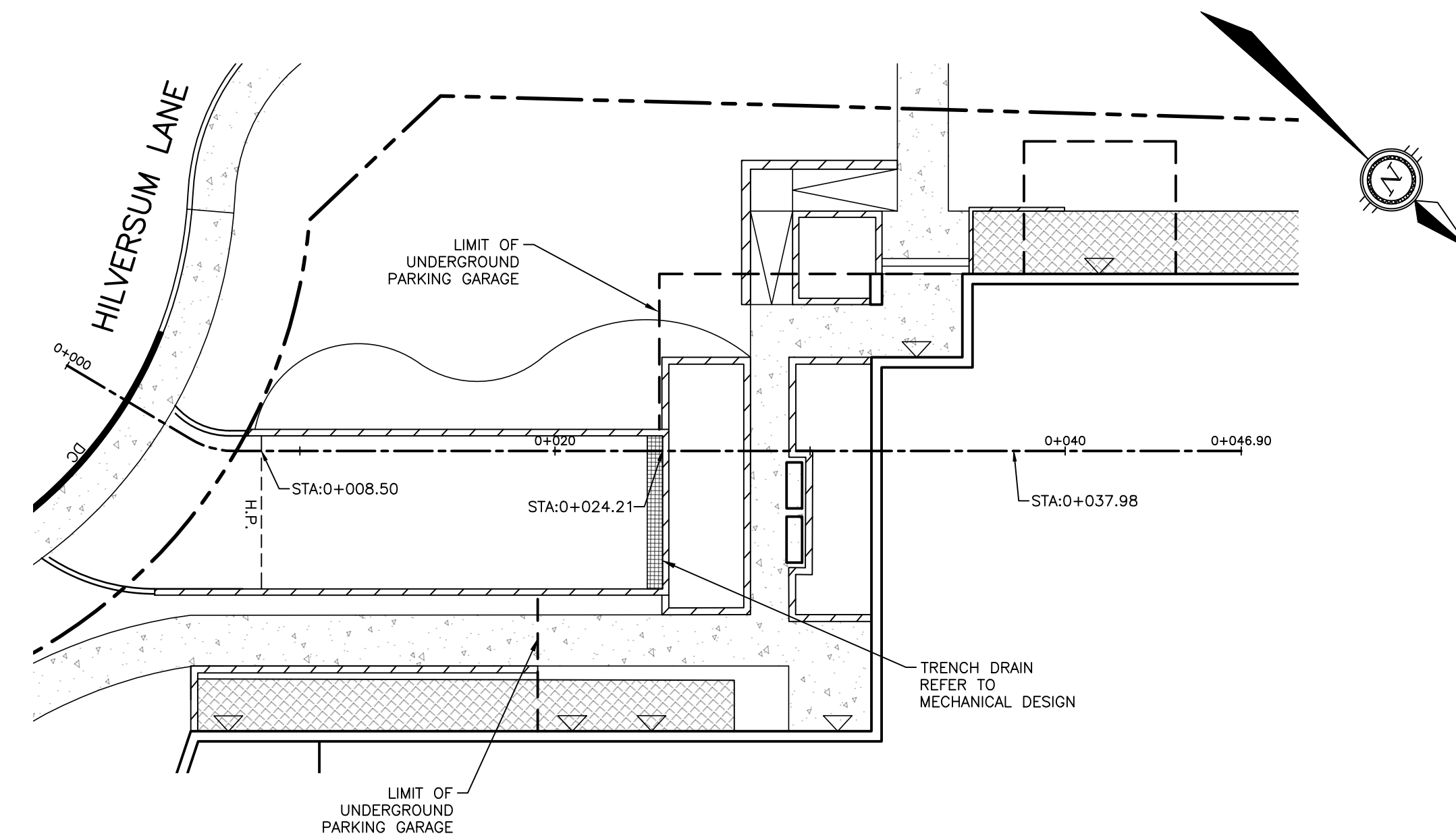
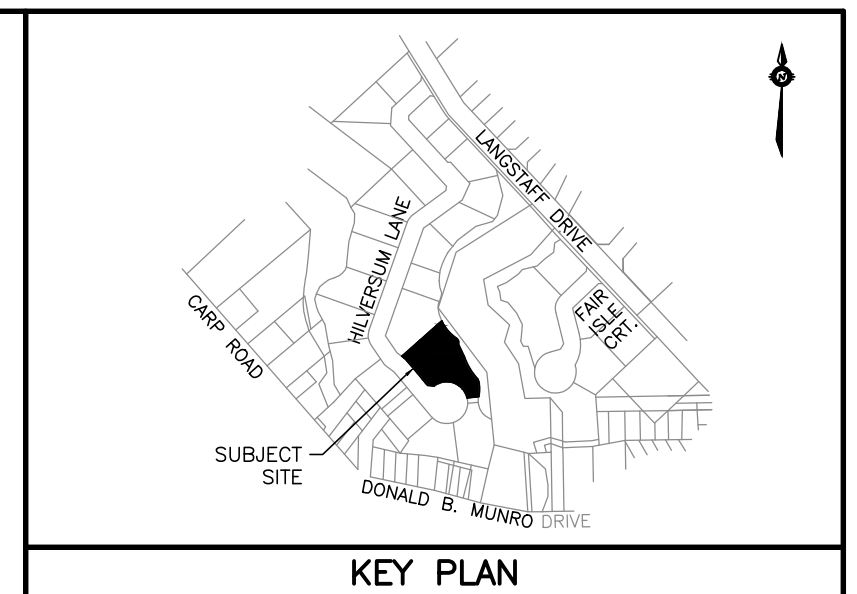
PROJECT No.	25094
SURVEY	ROBINSON CONSULTANTS
DATED	FEB. 2026
DWG. No.	25094-GR1

FILE No. D07-12-25-0155

PLAN No. XXXX



**NOT FOR CONSTRUCTION**



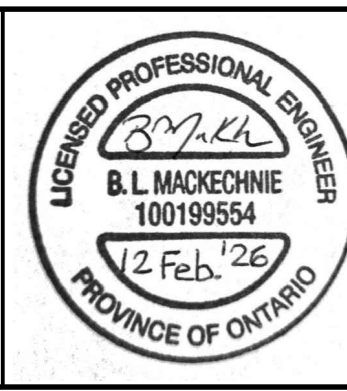
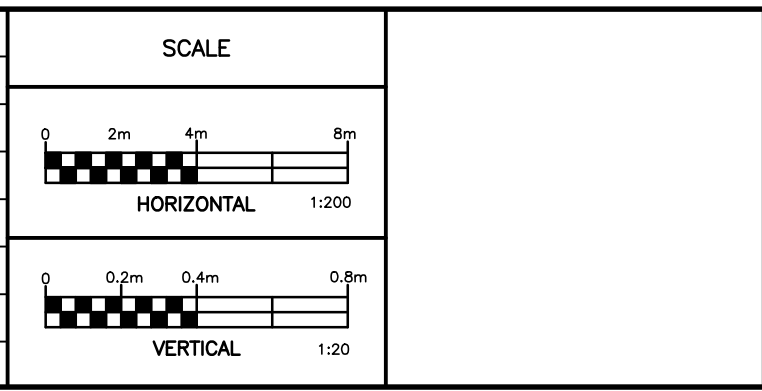
PROPOSED RAMP ELEVATION	103.43	103.66	103.65	103.59	102.40	102.20	102.07	101.98	PROPOSED RAMP ELEVATION
CHAINAGE	0+000	0+010	0+020	0+030	0+040	0+050			CHAINAGE

**NOTES**

THE POSITION OF ALL POLE LINES, CONDUITS, WATERMANS, SEWERS AND OTHER UNDERGROUND AND OVERGROUND UTILITIES AND STRUCTURES IS NOT NECESSARILY SHOWN ON THE CONTRACT DRAWINGS, AND WHERE SHOWN, THE ACCURACY OF SUCH UTILITIES AND STRUCTURES IS NOT GUARANTEED. BEFORE STARTING WORK, DETERMINE THE EXACT LOCATION OF ALL SUCH UTILITIES AND STRUCTURES AND ASSUME ALL LIABILITY FOR DAMAGE TO THEM.

GEODETIC SURVEY DERIVED FROM COSINE STATION 0011968U054. LOCATION DESCRIPTION: OLD HIGHWAY 17 BRIDGE OVER CARP RIVER ON CARP-STITTSVILLE ROAD, 0.2 KM SOUTH OF C.N.R. CROSSING IN VILLAGE OF CARP. TABLET IN TOP OF WEST WALL, 30 CM FROM NORTH END, 24 CM FROM WEST EDGE. VERTICAL CONTROL DATA, DATUM: CGVD28-78, FIRST ORDER, ELEVATION: 93.861. COORDINATE SYSTEM: MTM ZONE 9; NAD 83 DATUM (CAN83-9)

NO.	REVISION DESCRIPTION	DATE	BY
2	REVISED PER CITY COMMENTS	12/02/26	BLM
1	ISSUED FOR REVIEW	21/11/25	BLM



**Robinson**  
Land Development

2936 Baseline Road,  
Suite 200, Ottawa, ON  
K2H 1B3  
(613) 592-6060 rcii.com

DESIGN	BLM
CHECKED	SG
DRAWN	BLM
CHECKED	SG
APPROVED	BLM

**INVERNESS HOMES**  
38 AURIGA DRIVE, SUITE 200  
OTTAWA, ON K2E 8A6

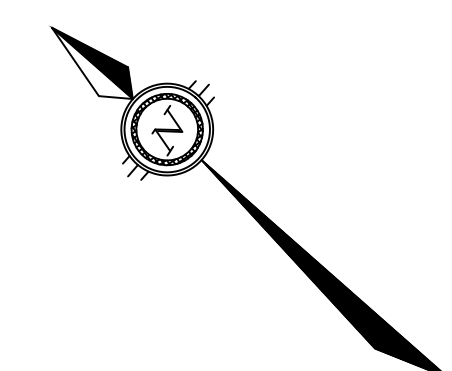
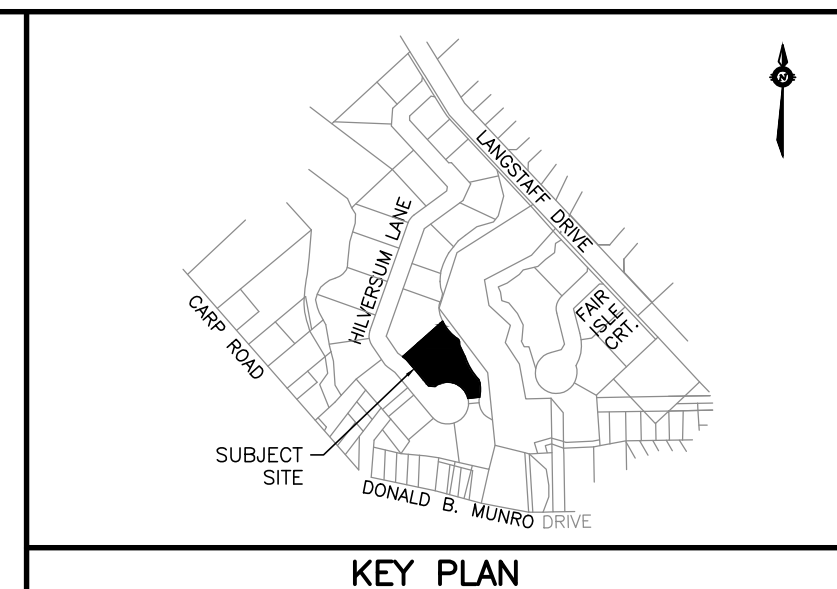
391 HILVERSUM LANE  
CARP, ON

**PARKING GARAGE RAMP  
PLAN & PROFILE**

PROJECT No.	25094
SURVEY	ROBINSON CONSULTANTS
DATED	FEB. 2026
DWG. No.	25094-P1

FILE No. D07-12-25-0155

PLAN No. XXXX



- LEGEND**
- PROPERTY BOUNDARY
  - LIMIT OF HAZARD LANDS
  - 15.0m TOP OF SLOPE SETBACK
  - TURTLE HABITAT SETBACK (AS PER EIS)
  - EXISTING HYDRANT
  - EXISTING CATCH BASIN
  - EXISTING WATERMAIN
  - ⊕ EXISTING VALVE & VALVE BOX
  - EXISTING SANITARY SEWER & MANHOLE
  - EXISTING STORM SEWER & MANHOLE
  - EXISTING LIGHT STANDARD
  - PROPOSED HYDRANT
  - WATERMAIN
  - V&VB
  - PRV
  - Y
  - CATCH BASIN
  - SANITARY SEWER & MANHOLE
  - STORM SEWER & MANHOLE
  - CS
  - sc
  - ▽ BUILDING ENTRANCE
  - CROSSING NUMBER
  - ▨ INSULATION (AS PER CITY STD. W22/S35)
  - ⊕ BOREHOLE (REFER TO GEOTECHNICAL REPORT)

CROSSING TABLE			
CROSSING No.	SERVICE	TOP/BOTTOM OF PIPE (m)	SEPARATION (m)
1	STORM	101.05	0.73
	SANITARY	100.32	
2	WATER	101.72	0.50
	STORM	101.22	

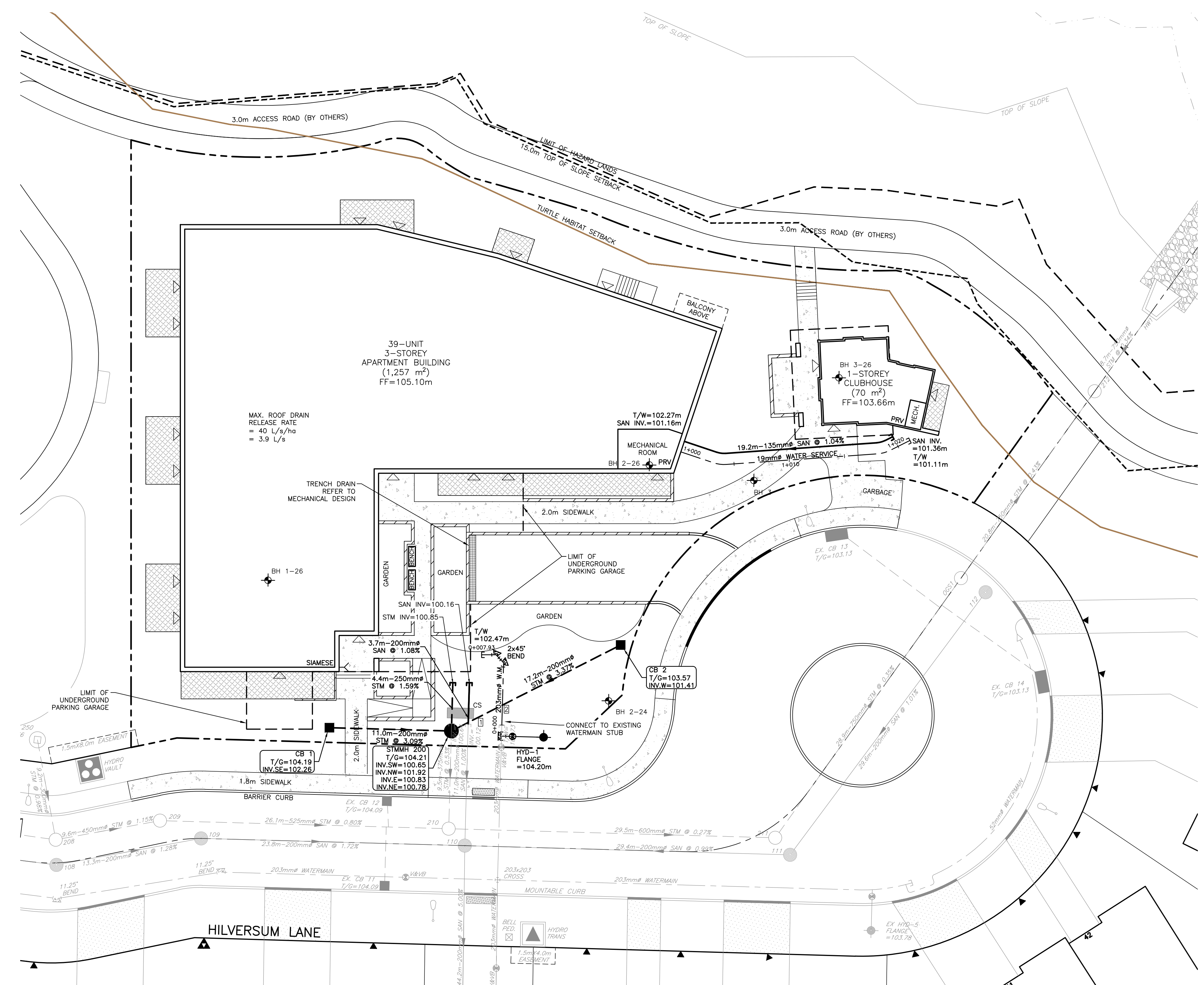
NOTES:  
1. SEPARATIONS ARE MEASURED TO OUTSIDE OF PIPE DIMENSIONS.

203mm WATERMAIN GRADE TABLE - BUILDING SERVICE				
STATION	FINISHED GRADE (m)	TOP OF WATER (m)	COVER DEPTH (m)	COMMENTS
0+000	104.10	101.73	2.37	CONNECT TO EXISTING STUB
0+001.8	104.35	101.95	2.40	STORM CROSSING
0+005.6	104.63	102.23	2.40	45° HORZ. BEND
0+006.6	104.73	102.33	2.40	45° HORZ. BEND
0+007.9	104.87	102.47	2.40	CAP

19mm WATERMAIN GRADE TABLE - CLUB HOUSE SERVICE				
STATION	FINISHED GRADE (m)	TOP OF WATER (m)	COVER DEPTH (m)	COMMENTS
1+000	104.67	102.27	2.40	MECHANICAL ROOM
1+010	103.62	101.22	2.40	TOP OF WATERMAIN
1+020	103.44	101.04	2.40	TOP OF WATERMAIN
1+021.2	103.51	101.11	2.40	CAP

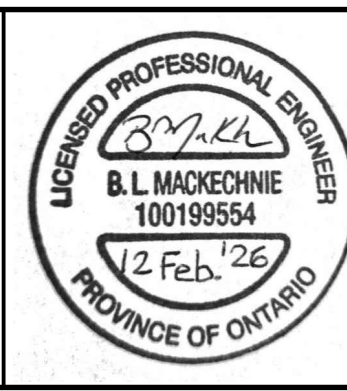
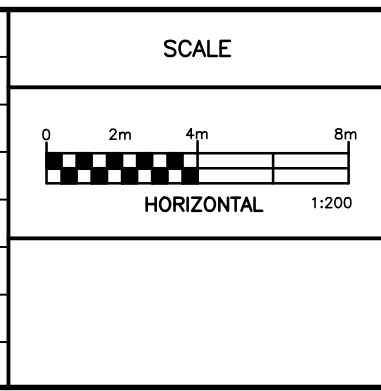
NOTES:  
1. CONNECTIONS TO LIVE WATERMAINS TO BE COMPLETED BY CITY FORCES. CONTRACTOR TO PROVIDE EXCAVATION, MATERIAL, BACKFILL AND ASSISTANCE AS REQUIRED.



**NOT FOR CONSTRUCTION**

**NOTES**  
THE POSITION OF ALL POLE LINES, CONDUITS, WATERMANS, SEWERS AND OTHER UNDERGROUND AND OVERGROUND UTILITIES AND STRUCTURES IS NOT NECESSARILY SHOWN ON THE CONTRACT DRAWINGS, AND WHERE SHOWN, THE ACCURACY OF THE POSITION OF SUCH UTILITIES AND STRUCTURES IS NOT GUARANTEED. BEFORE STARTING WORK, DETERMINE THE EXACT LOCATION OF ALL SUCH UTILITIES AND STRUCTURES AND ASSUME ALL LIABILITY FOR DAMAGE TO THEM.  
GEODETIC SURVEY DERIVED FROM COSINE STATION 0011968U054. LOCATION DESCRIPTION: OLD HIGHWAY 17 BRIDGE OVER CARP RIVER ON CARP-STITTSVILLE ROAD, 0.2 KM SOUTH OF C.N.R. CROSSING IN VILLAGE OF CARP. TABLE IN TOP OF WEST WALL, 30 CM FROM NORTH END, 24 CM FROM WEST EDGE. VERTICAL CONTROL DATA, DATUM: CGVD28/78, FIRST ORDER, ELEVATION: 93.861. COORDINATE SYSTEM: MTM ZONE 9; NAD 83 DATUM (CAN83-9)

NO.	REVISION DESCRIPTION	DATE	BY
2	REVISED PER CITY COMMENTS	12/02/26	BLM
1	ISSUED FOR REVIEW	21/11/25	BLM



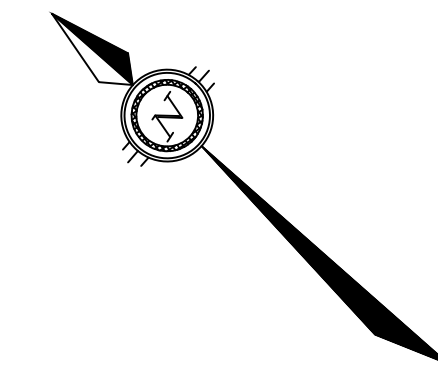
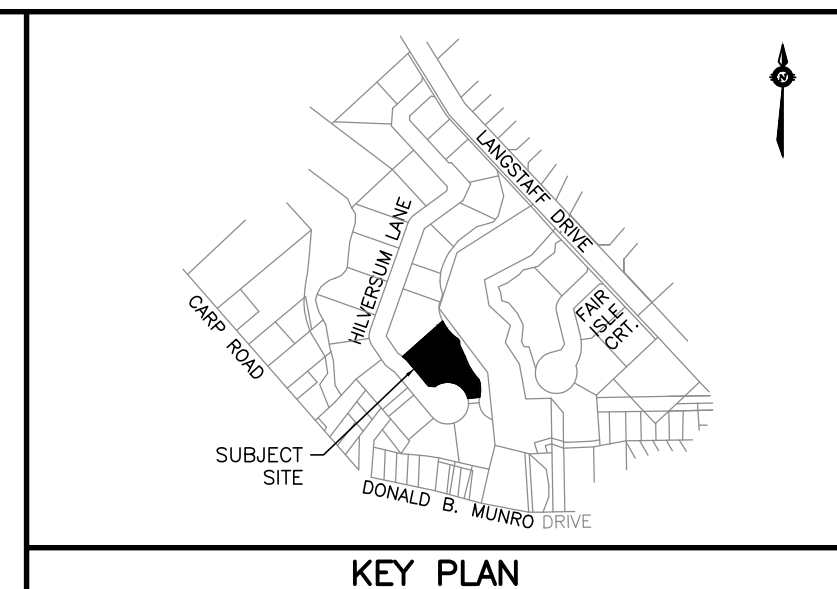
**Robinson Land Development**  
2936 Baseline Road, Suite 200, Ottawa, ON K2H 1B3  
(613) 592-6060 rcli.com

DESIGN	BLM
CHECKED	SG
DRAWN	BLM
CHECKED	SG
APPROVED	BLM

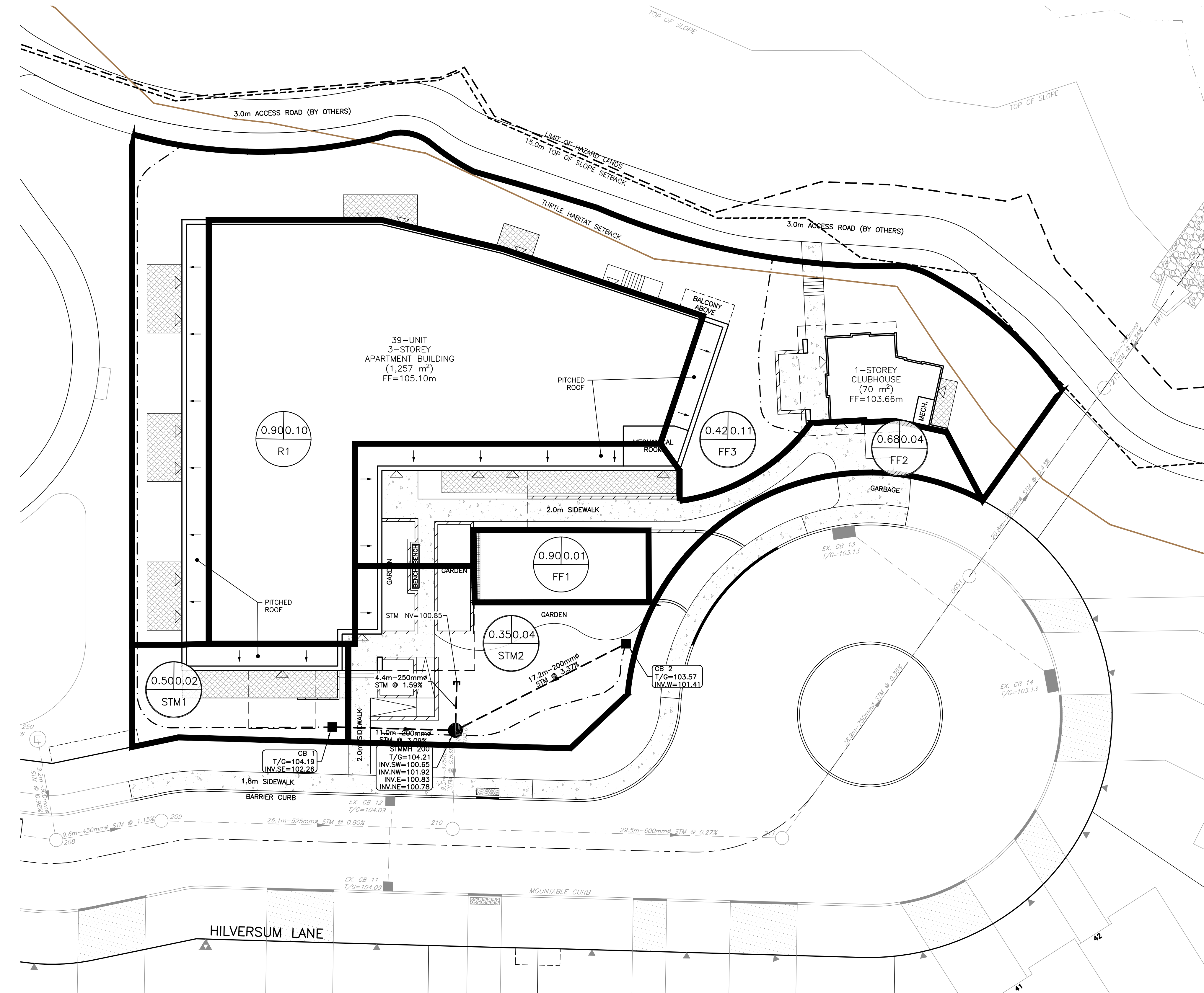
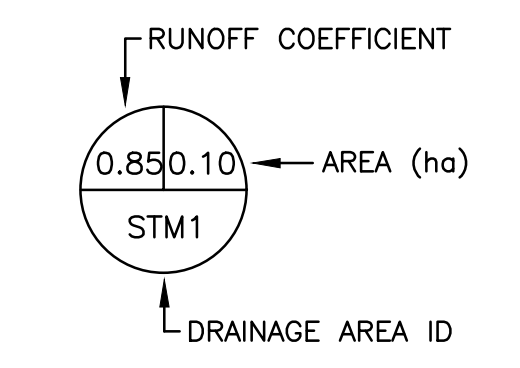
**INVERNESS HOMES**  
38 AURIGA DRIVE, SUITE 200  
OTTAWA, ON K2E 8A6  
  
391 HILVERSUM LANE  
CARP, ON

**SERVICING PLAN**

PROJECT No.	25094
SURVEY	ROBINSON CONSULTANTS
DATED	FEB. 2026
DWG. No.	25094-S1



- LEGEND**
- PROPERTY BOUNDARY
  - LIMIT OF HAZARD LANDS
  - 15.0m TOP OF SLOPE SETBACK
  - TURTLE HABITAT SETBACK (AS PER EIS)
  - EXISTING CATCH BASIN
  - EXISTING STORM SEWER & MANHOLE
  - CATCH BASIN
  - STORM SEWER & MANHOLE
  - ▽ BUILDING ENTRANCE
  - SWALE
  - STORM DRAINAGE AREA BOUNDARY



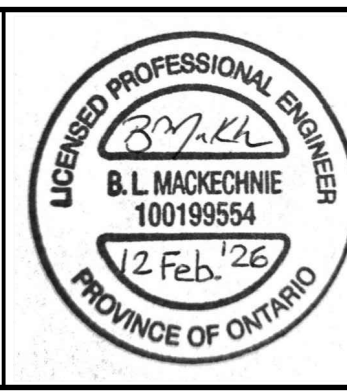
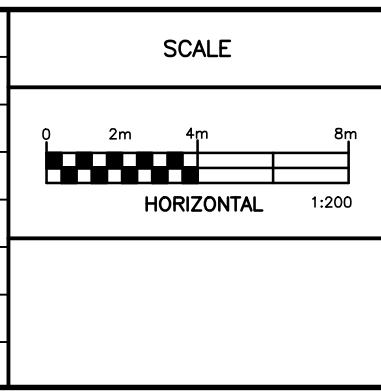
**NOT FOR CONSTRUCTION**

**NOTES**

THE POSITION OF ALL POLE LINES, CONDUITS, WATERMANS, SEWERS AND OTHER UNDERGROUND AND OVERGROUND UTILITIES AND STRUCTURES IS NOT NECESSARILY SHOWN ON THE CONTRACT DRAWINGS, AND WHERE SHOWN, THE ACCURACY OF THE POSITION OF SUCH UTILITIES AND STRUCTURES IS NOT GUARANTEED. BEFORE STARTING WORK, DETERMINE THE EXACT LOCATION OF ALL SUCH UTILITIES AND STRUCTURES AND ASSUME ALL LIABILITY FOR DAMAGE TO THEM.

GEODETIC SURVEY DERIVED FROM COSINE STATION 0011968U054. LOCATION DESCRIPTION: OLD HIGHWAY 17 BRIDGE OVER CARP RIVER ON CARP-STITTSVILLE ROAD, 0.2 KM SOUTH OF C.N.R. CROSSING IN VILLAGE OF CARP. TABLET IN TOP OF WEST WALL, 30 CM FROM NORTH END, 24 CM FROM WEST EDGE. VERTICAL CONTROL DATA, DATUM: CGVD28:78, FIRST ORDER, ELEVATION: 93.861. COORDINATE SYSTEM: MTM ZONE 9; NAD 83 DATUM (CAN83-9)

NO.	REVISION DESCRIPTION	DATE	BY
2	REVISED PER CITY COMMENTS	12/02/26	BLM
1	ISSUED FOR REVIEW	21/11/25	BLM



**Robinson**  
Land Development

2936 Baseline Road,  
Suite 200, Ottawa, ON  
K2H 1B3  
(613) 592-6060 rcii.com

DESIGN	BLM
CHECKED	SG
DRAWN	BLM
CHECKED	SG
APPROVED	BLM

**INVERNESS HOMES**  
38 AURIGA DRIVE, SUITE 200  
OTTAWA, ON K2E 8A6

391 HILVERSUM LANE  
CARP, ON

**STORM DRAINAGE AREA PLAN**

PROJECT No.	25094
SURVEY	ROBINSON CONSULTANTS
DATED	FEB. 2026
DWG. No.	25094-STM1
PLAN No.	XXXX

FILE No. D07-12-25-0155