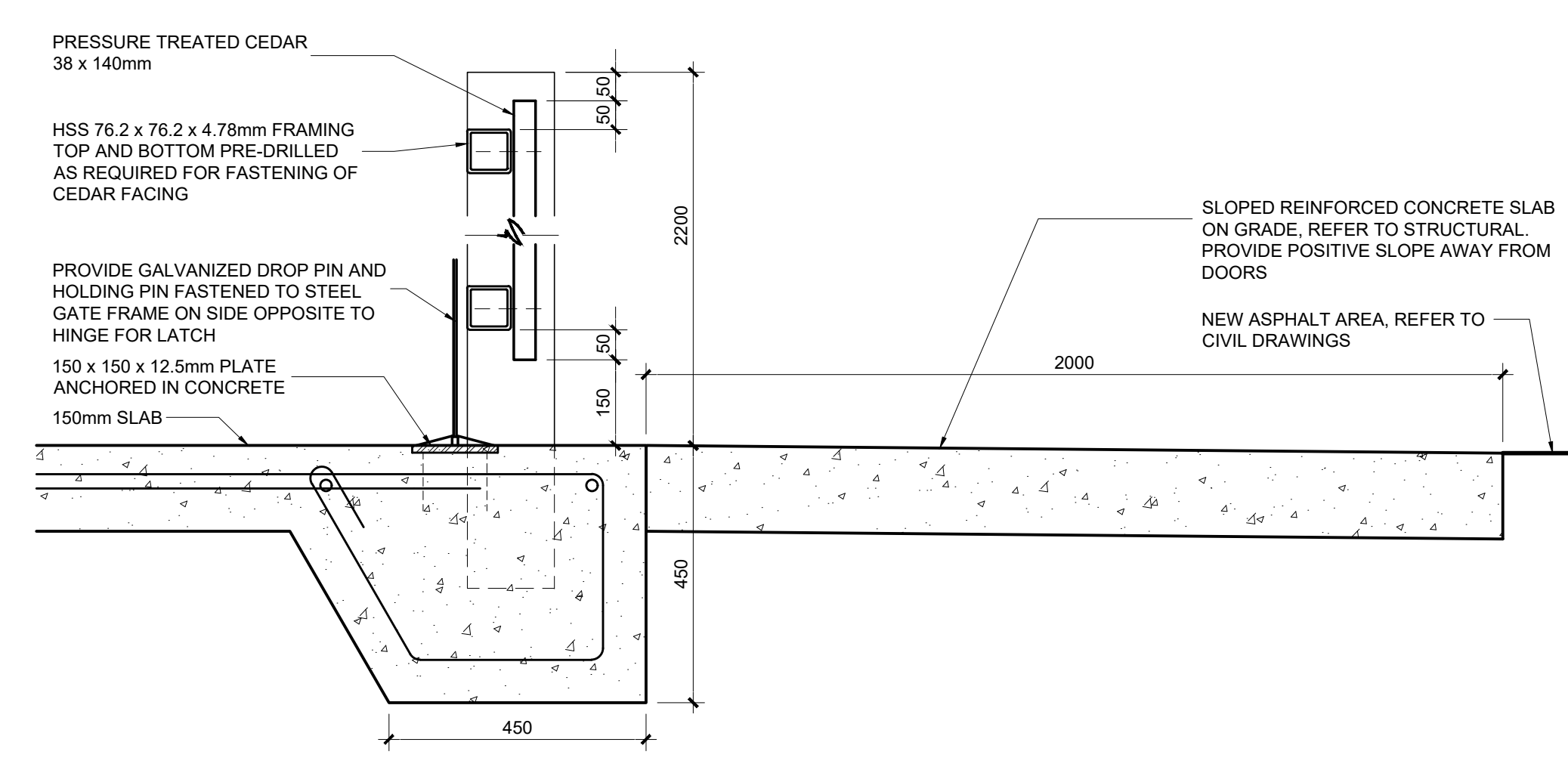
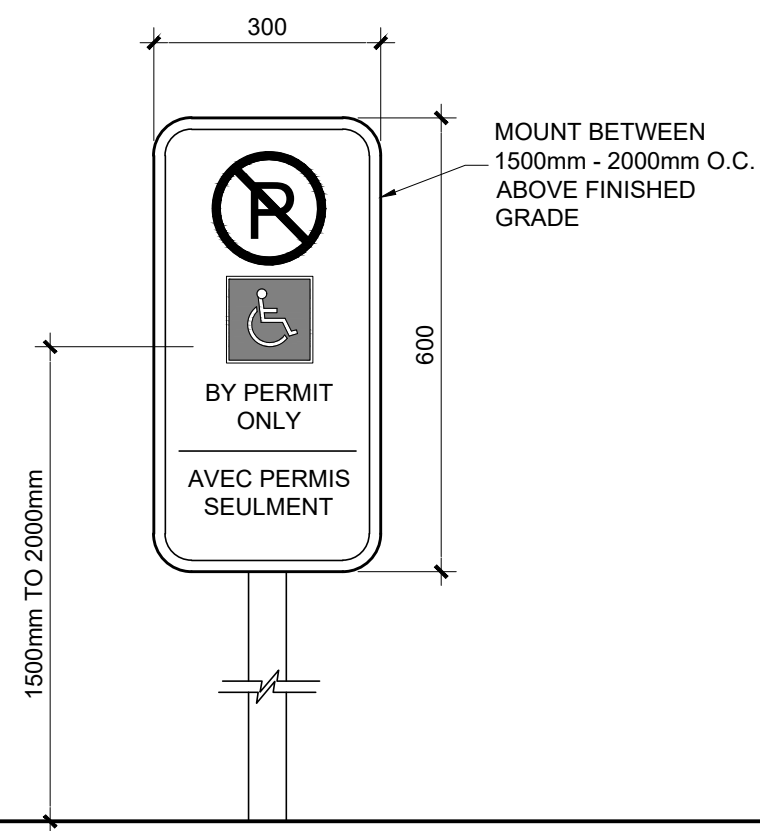


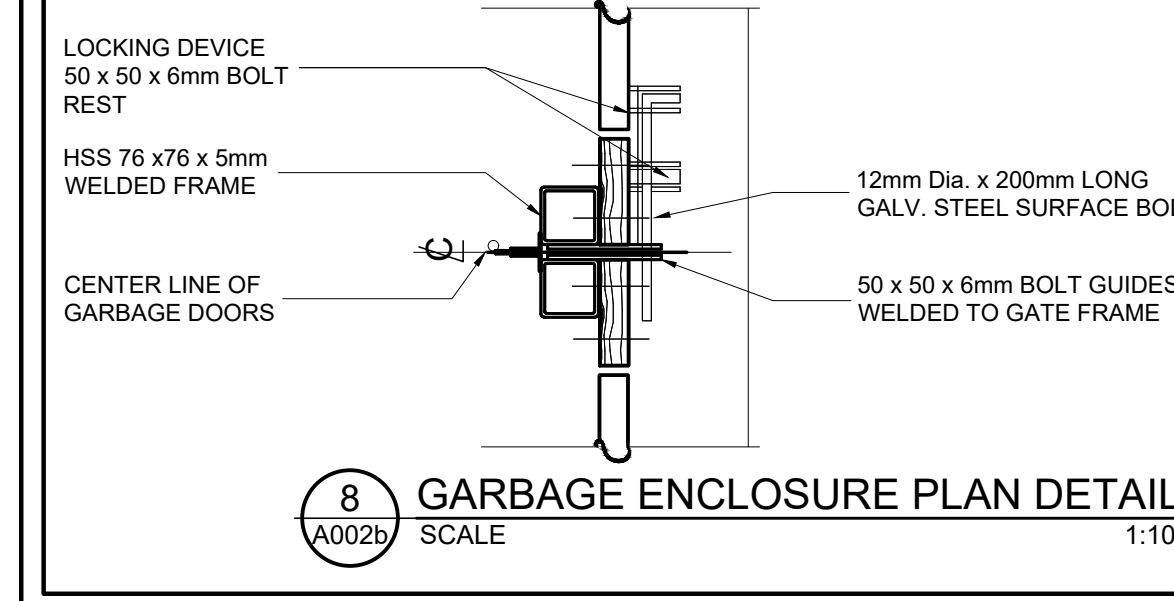
12 CONCRETE WALKWAY - B/F PARKING LAYOUT  
SCALE 1:75



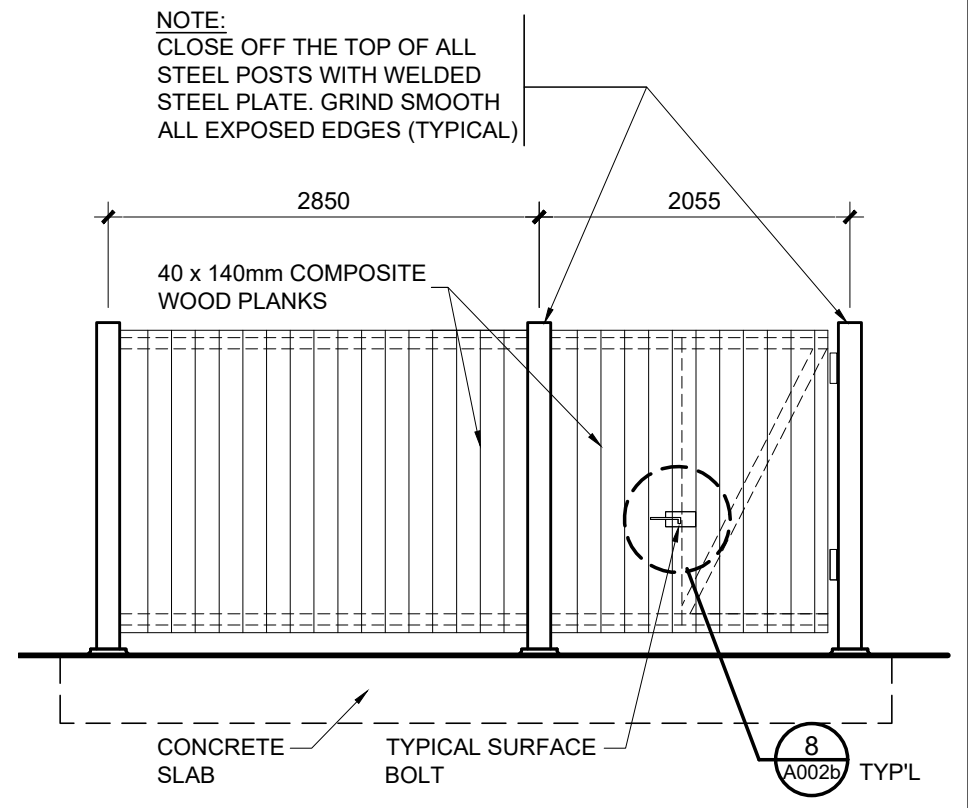
4 GARBAGE ENCLOSURE SECTION DETAIL  
SCALE 1:10



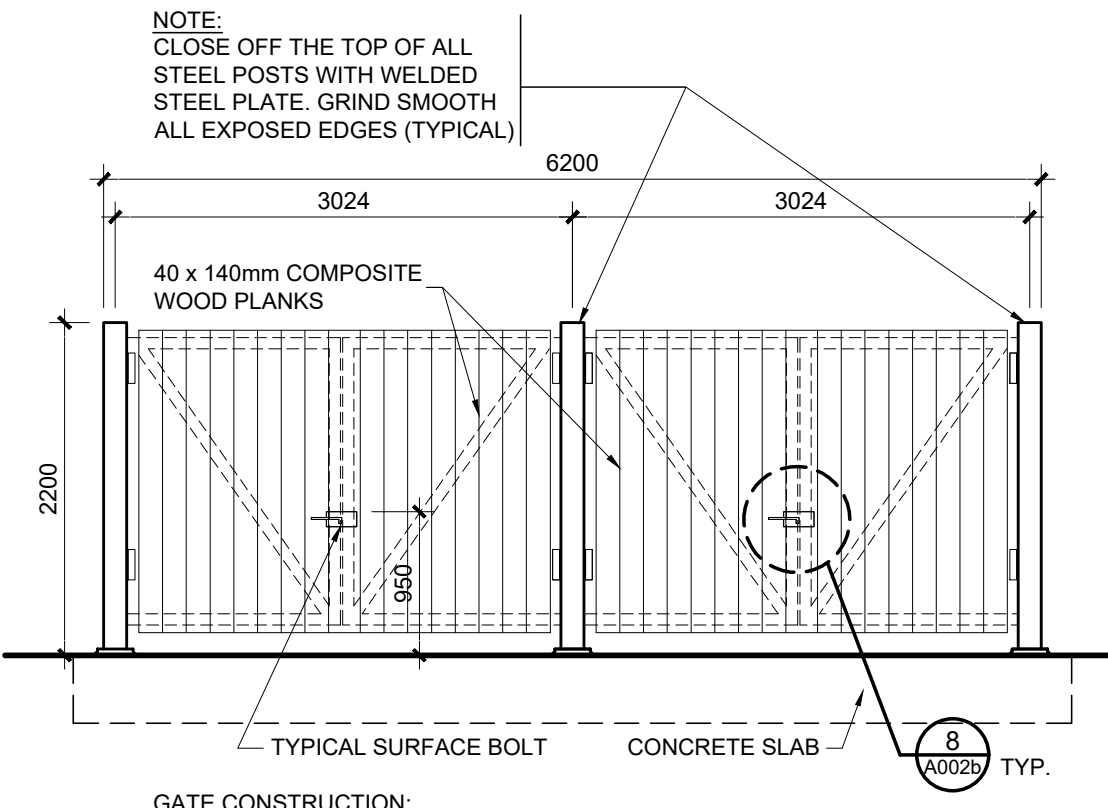
13 BARRIER FREE SIGN  
SCALE 1:10



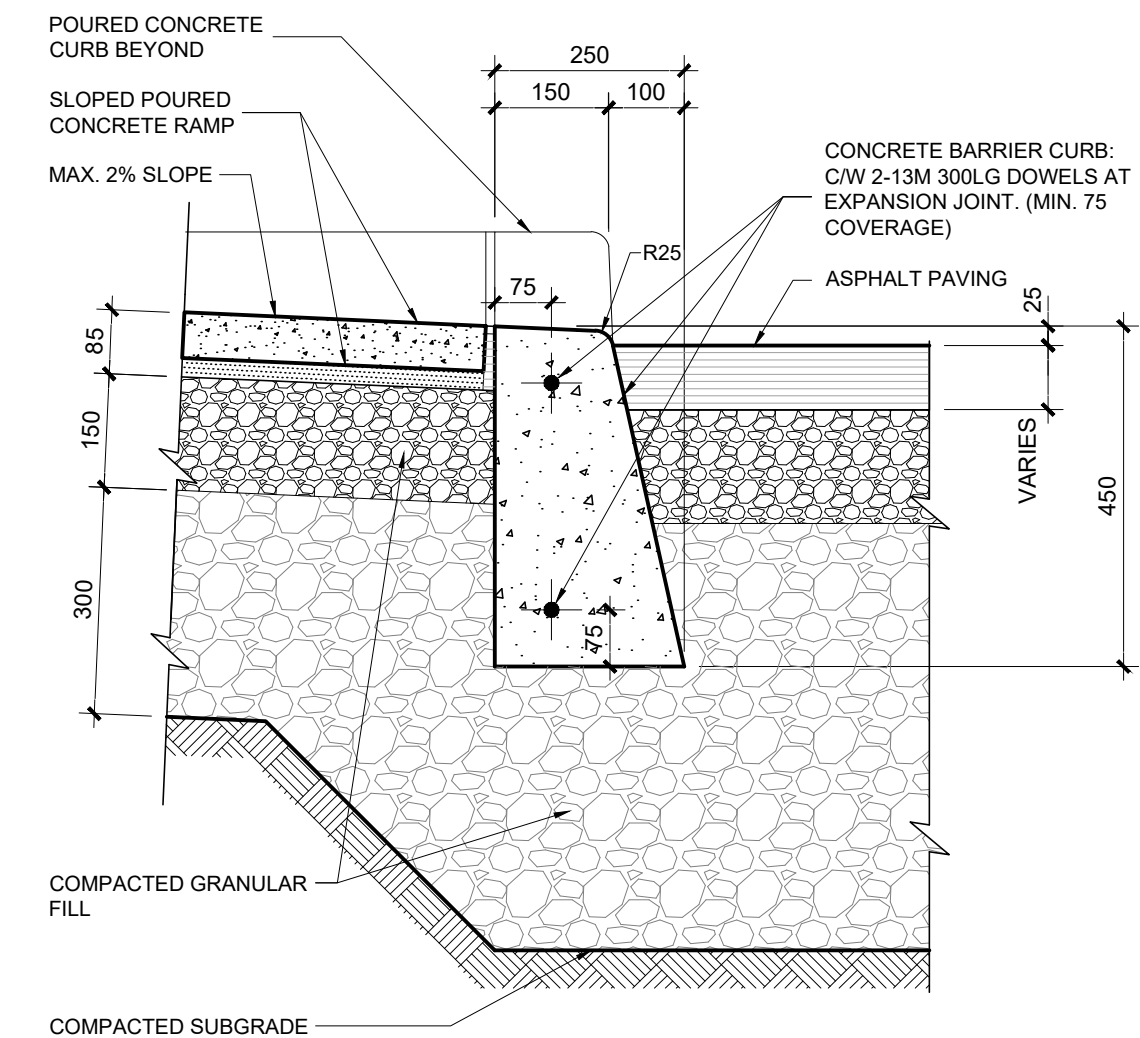
8 GARBAGE ENCLOSURE PLAN DETAIL  
SCALE 1:10



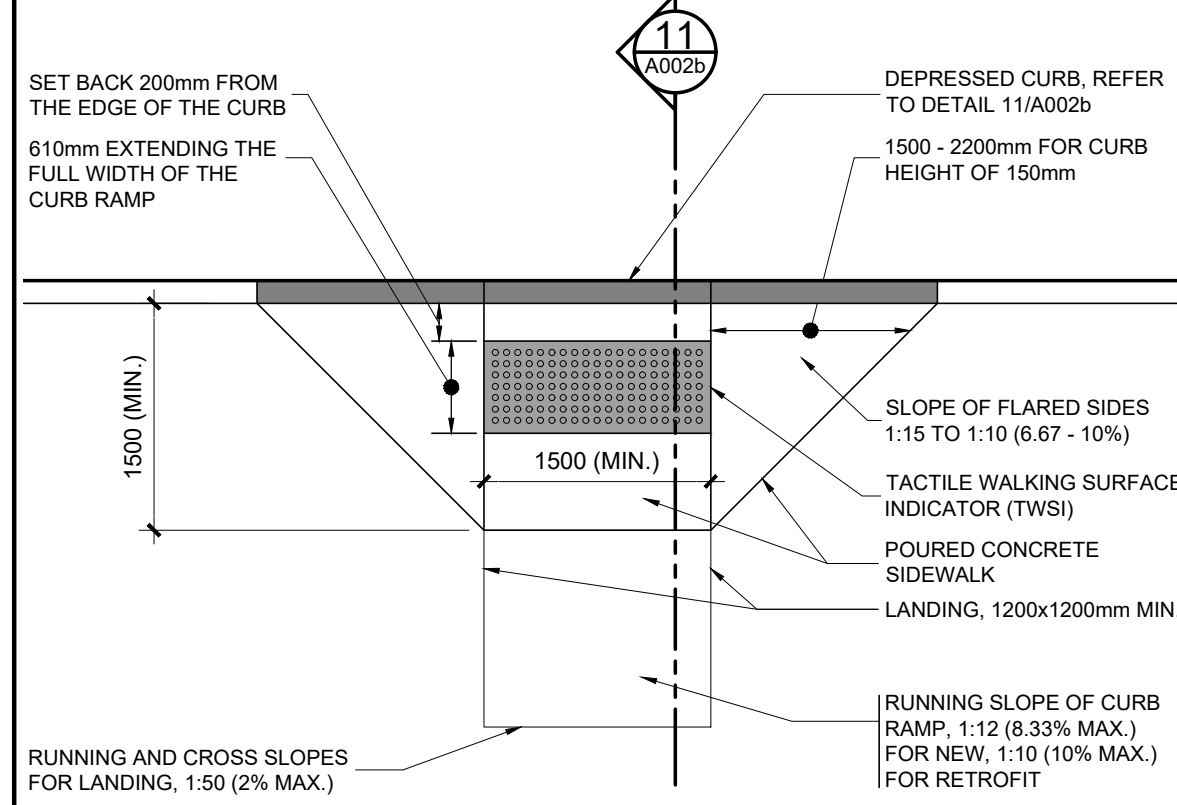
3 GARBAGE ENCLOSURE ELEVATION  
SCALE 1:50



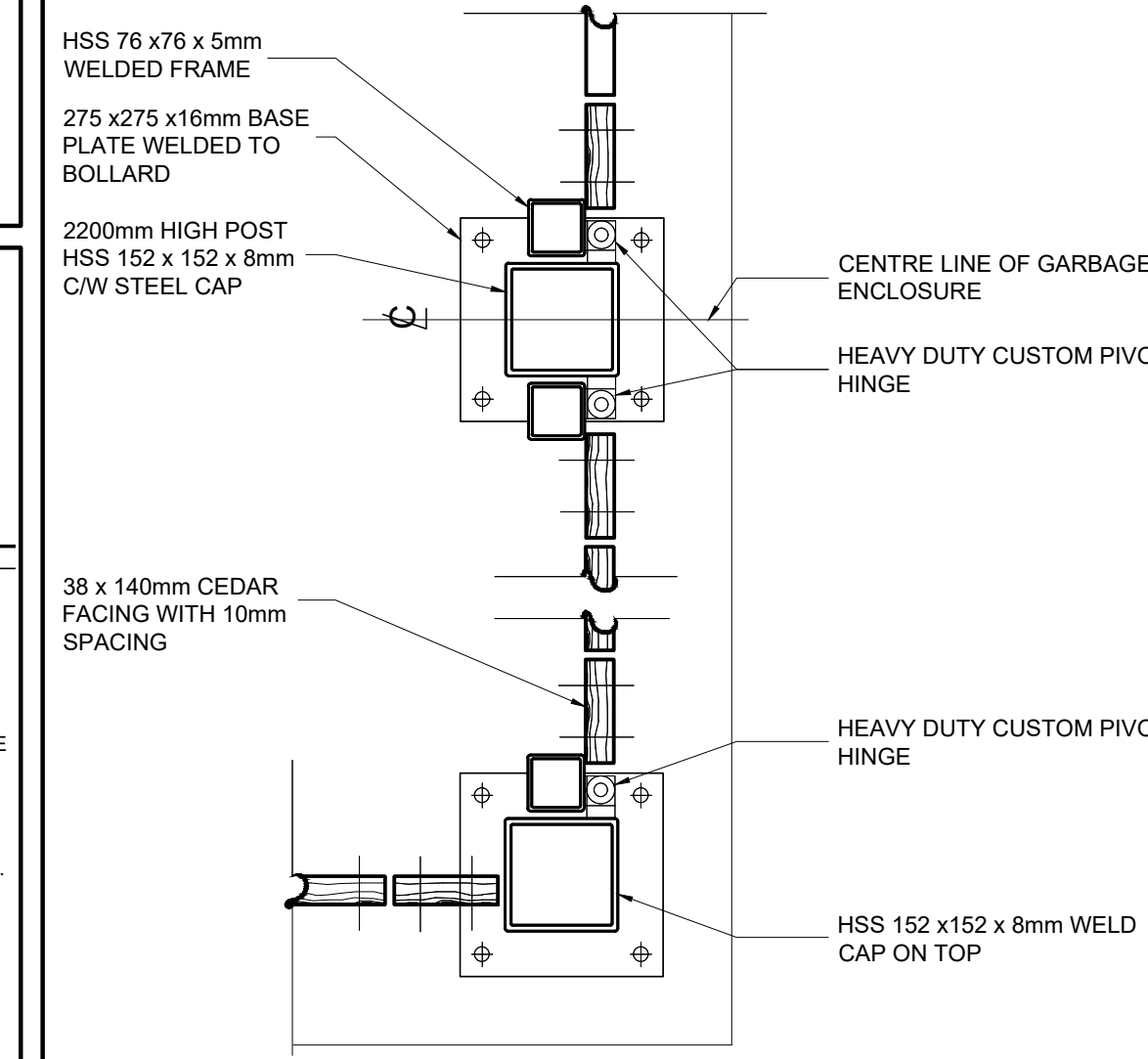
2 GARBAGE ENCLOSURE ELEVATION  
SCALE 1:50



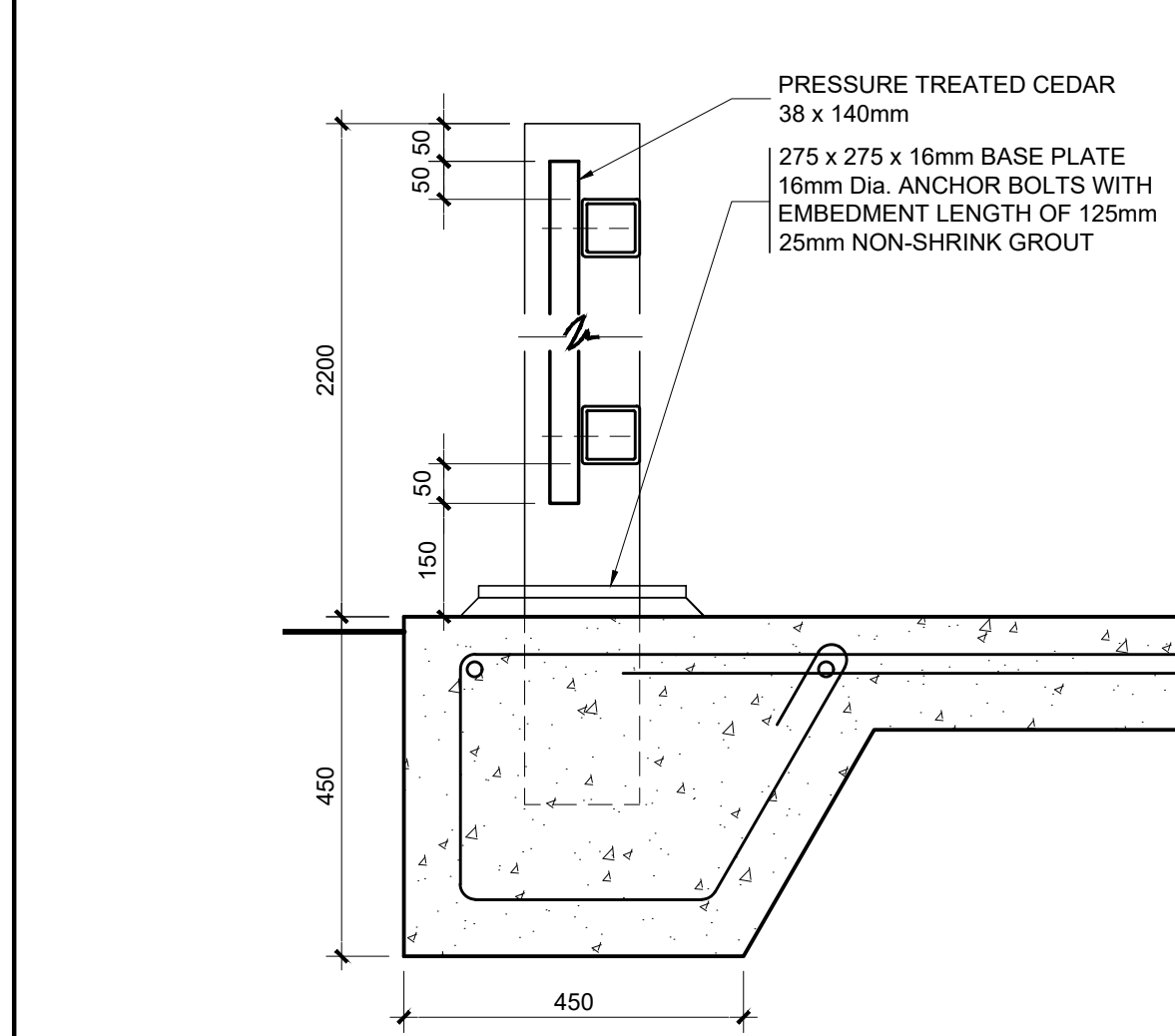
11 DEPRESSED CURB SECTION DETAIL  
SCALE 1:10



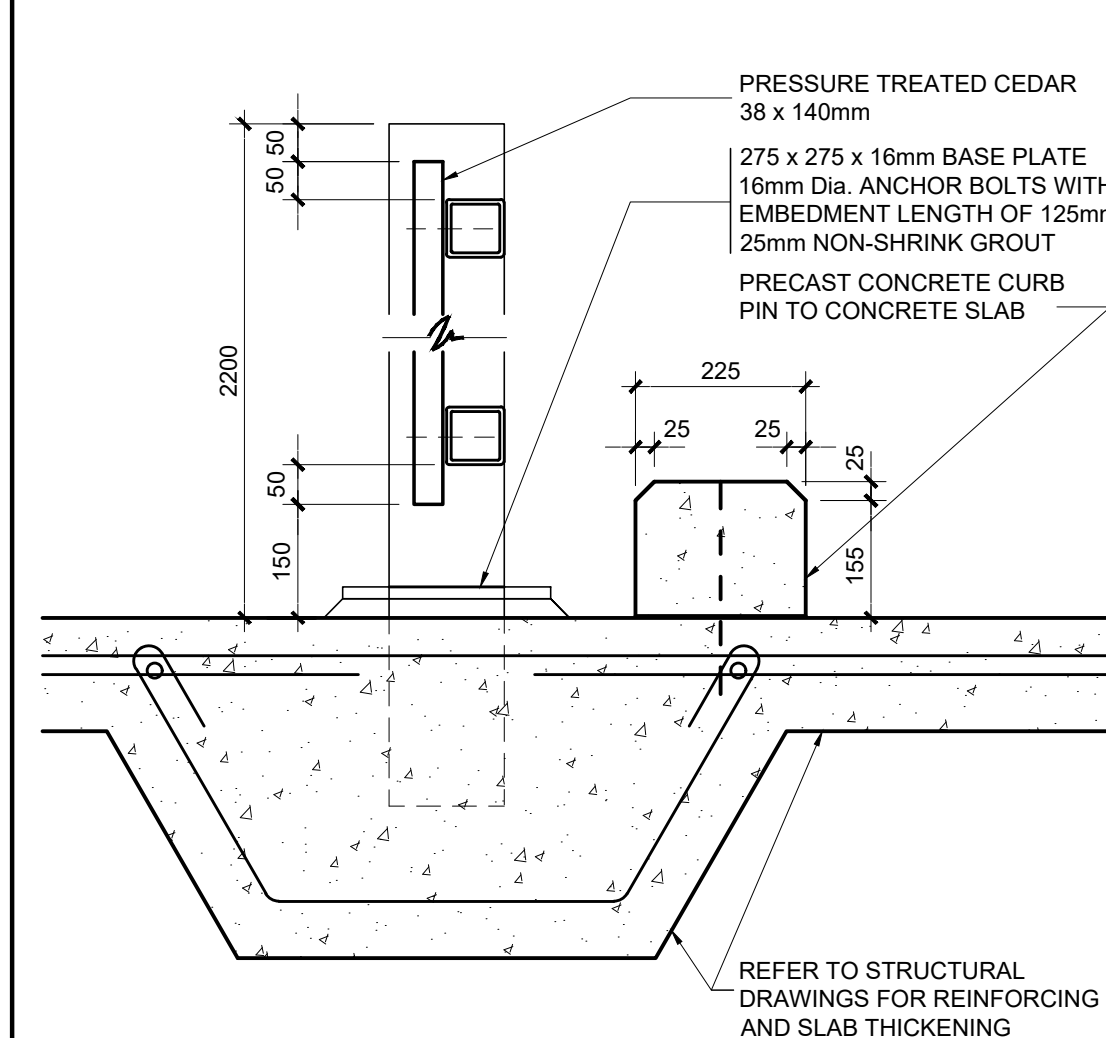
9 DEPRESSED CURB PLAN  
SCALE 1:50



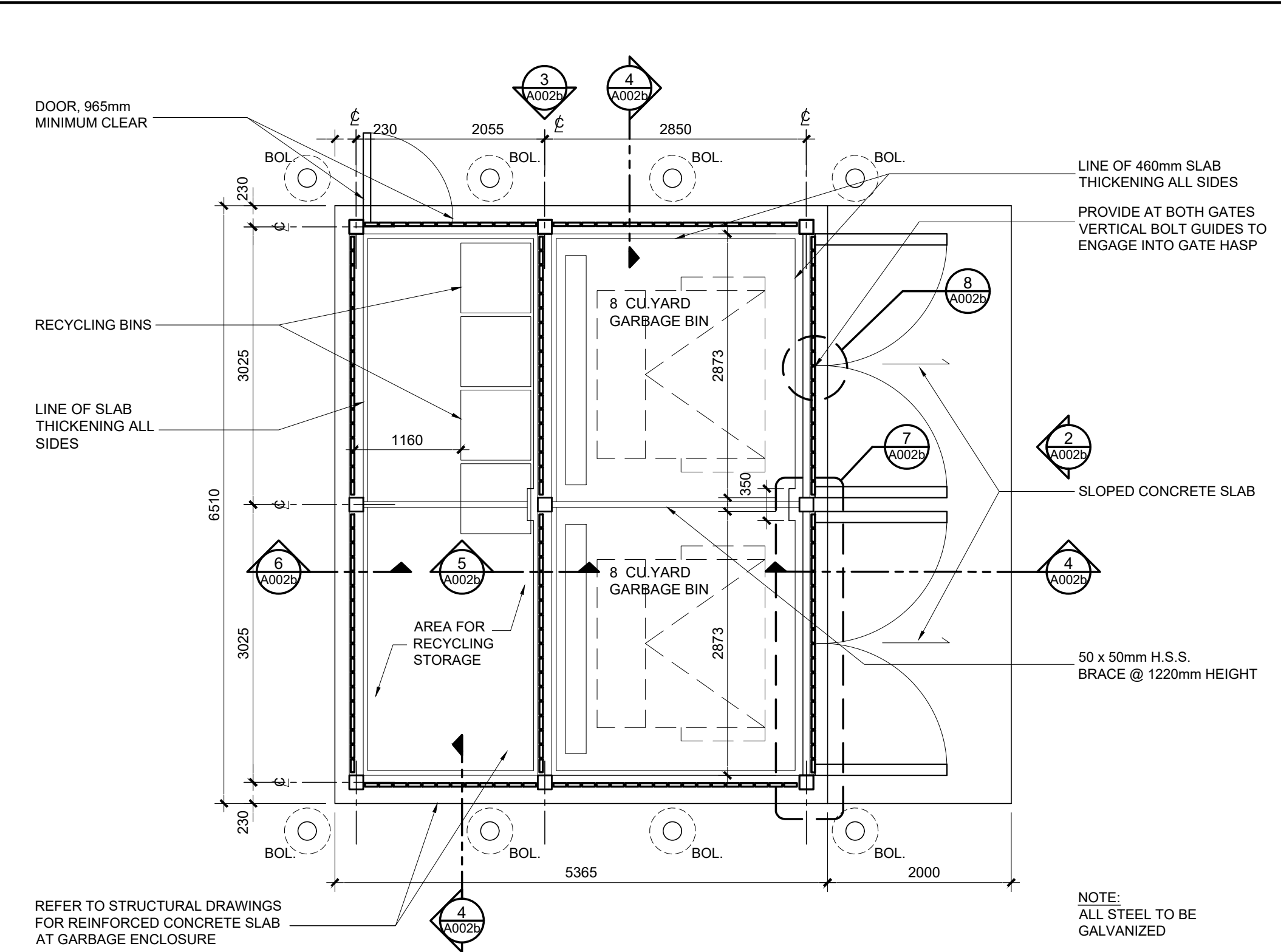
7 GARBAGE ENCLOSURE PLAN DETAIL  
SCALE 1:10



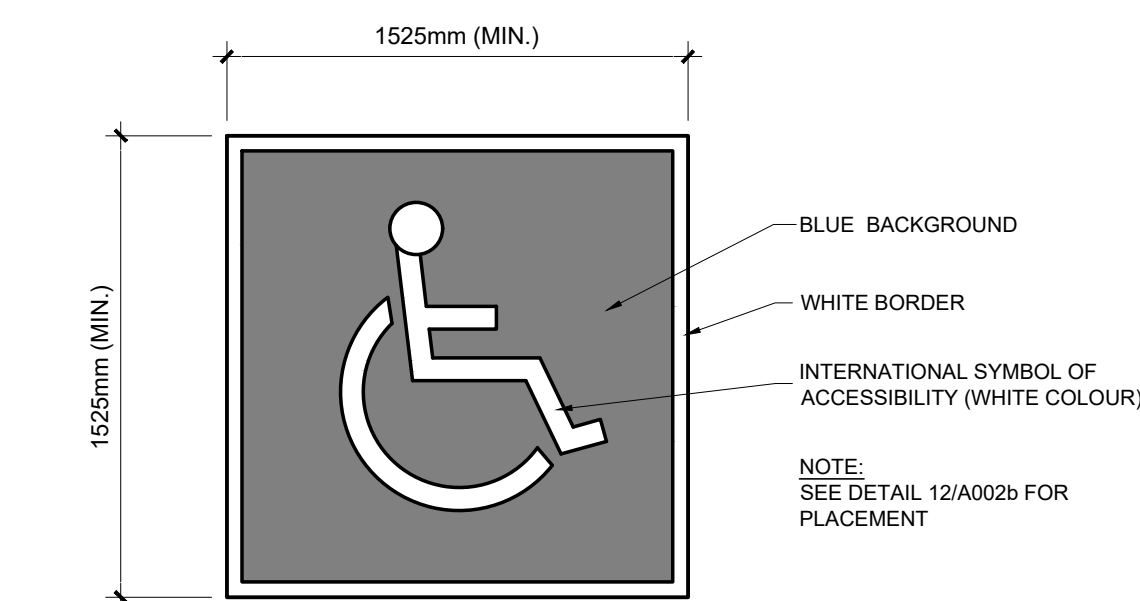
6 GARBAGE ENCLOSURE SECTION DETAIL  
SCALE 1:10



5 GARBAGE ENCLOSURE SECTION DETAIL  
SCALE 1:10



1 GARBAGE ENCLOSURE PLAN DETAIL  
SCALE 1:50



10 BARRIER FREE SYMBOL  
SCALE 1:25

**Ottawa**  
INFRASTRUCTURE SERVICES & COMMUNITY SUSTAINABILITY /  
SERVICES D'INFRASTRUCTURE ET VIABILITE DES COLLECTIVITES  
INFRASTRUCTURE SERVICES BRANCH /  
DIRECTION D'INFRASTRUCTURE  
DESIGN AND CONSTRUCTION DIVISION /  
DIVISION DE LA CONCEPTION ET DE LA CONSTRUCTION  
DEPUTY CITY MANAGER / DIRECTEUR DES SERVICES MUNICIPAUX  
DIRECTOR / DIRECTEUR  
MANAGER / GESTIONNAIRE  
FOR / POUR  
INFRASTRUCTURE SERVICES & COMMUNITY SUSTAINABILITY  
INFRASTRUCTURE SERVICES  
DESIGN & CONSTRUCTION - BUILDINGS  
**N45 ARCHITECTURE INC.**  
71 Bank Street, 7th Floor - Ottawa, Ontario, K1P 5N2  
tel. 613.224.0095 fax 613.224.9811

**KEY PLAN**

RE-ISSUED FOR SITE PLAN APPROVAL	2026-01-23	INITIALS
ISSUED FOR SITE PLAN APPROVAL	2025-11-06	PARTIALS
NUMBER / MILESTONE / FANT SAILLANT	DATE / (Y/M/D) / (ANNÉE)	PARTIALS / PARTIELS
DESIGNED BY / CONÇU PAR	CHECKED BY / VÉRIFIÉ PAR	
DRAWN BY / DESSINÉ PAR	SCALE	
	1:300	

DETAIL NUMBER	PROJECT NORTH
1 DRAWING TITLE	
A1.1 SCALE	
SHEET NUMBER	

THIS DRAWING IS THE PROPERTY OF THE CITY OF OTTAWA AND ALL COPYRIGHT IS RESERVED. DIMENSIONS ON DRAWING ARE FOR ESTIMATING PURPOSES ONLY. IT IS THE RESPONSIBILITY OF EACH CONTRACTOR AND SUB-CONTRACTOR OR CONSULTANT TO CHECK AND VERIFY ALL DIMENSIONS AND CONDITIONS ON SITE. NOTIFY OWNER OF ANY ERRORS OR OMISSIONS PRIOR TO COMMENCING THE WORK. DO NOT SCALE THE DRAWINGS.  
CE Dessin constitue la propriété de la Ville d'Ottawa et tout droit d'auteur est réservé. Les dimensions utilisées le sont à des fins d'estimation seulement. Il incombe à chaque entrepreneur, sous-contractant ou consultant de vérifier toutes les dimensions et les conditions sur le chantier. Veuillez informer le propriétaire de toute erreur ou omission avant d'entamer les travaux. Ne dressez pas les plans à l'échelle.

ARCHITECT / ARCHITECTE	CONSULTANT / EXPERT-CONSEIL
CONSULTANT / EXPERT-CONSEIL	CONSULTANT / EXPERT-CONSEIL

PROJECT / LOCATION / PROJET / ENDROIT  
**LARRY ROBINSON ARENA  
NEW ADDITION**  
2785 8th LINE ROAD  
OTTAWA, ONTARIO

DRAWING / DESSIN  
**SITE DETAILS**

BUSINESS ENTITY / NUMERO DE L'ENTITE BUILDING NUMBER / NUMERO DU BATIMENT	SHEET NO. / FEUILLE NO.
PROJECT NO. / NUMERO DE PROJET	<b>A002b</b>
CF000533	