

ARCHITECT

ALEXANDER WILSON
ARCHITECT INC.

ADMIRALTY PLACE, 20 GORE ST, UNIT 103
KINGSTON, ONTARIO
K7L 2L1

Phone: (613)545-3744
Fax: (613)545-1411
Email: design@awarchitect.ca

GENERAL CONTRACTOR

MOODIE FALLOWFIELD WAREHOUSE PROJECT

11709097 CANADA INCORPORATED

OTTAWA, ON



STRUCTURAL

D+M STRUCTURAL
ENGINEERING

110-333 Preston street, Ottawa,
ON K1S5N4
(613)880-2767
Ryan@dm-structural.ca

MECHANICAL AND
ELECTRICAL:

MIRITON LTD.

31-2000 Thurston Drive
Ottawa, On. K1G4K7
info@miriton.com
613-722-5486

CIVIL:

KOLLAARD ASSOCIATES INC.

210 Prescott Street,
P.O. Box 189 Kemptville, Ontario
k0G1J0
info@kollaard.ca
613-860-0923

LANDSCAPE:

JAMES B LENNOX & ASSOCIATES INC.

3332 Carling Ave
Nepean Ontario K2H5A8
jl@jbla.ca
613-722-5168

DRAWING LIST

Dwg No.	Drawing Name
A000	TITLE PAGE
A000	CONCEPTUAL SITE PLAN
A002	WALL / FLOOR / ROOF TYPES
A100	MASTER FOUNDATION PLAN
A101	FOUNDATION PLAN - BUILDING A AND B
A102	FOUNDATION PLAN - BUILDING C AND D
A103	FOUNDATION PLAN - BUILDING E
A104	MASTER GROUND FLOOR PLAN
A105	GROUND FLOOR PLAN - BUILDING A AND B
A106	GROUND FLOOR PLAN - BUILDING C AND D
A107	GROUND FLOOR PLAN - BUILDING E
A108	MASTER ROOF PLAN
A109	ROOF PLAN - BUILDING A AND B
A110	ROOF PLAN - BUILDING C AND D
A111	ROOF PLAN - BUILDING E
A300	BLDG A & B ELEVATIONS
A301	BLDG C & D ELEVATIONS
A302	BLDG E ELEVATIONS
A500	Wall Sections
A501	Section Details
A700	Roof Details
A900	DOOR & WINDOW SCHEDULE

SET NUMBER

MOODIE FALLOWFIELD WAREHOUSE PROJECT
11709097 CANADA INCORPORATED

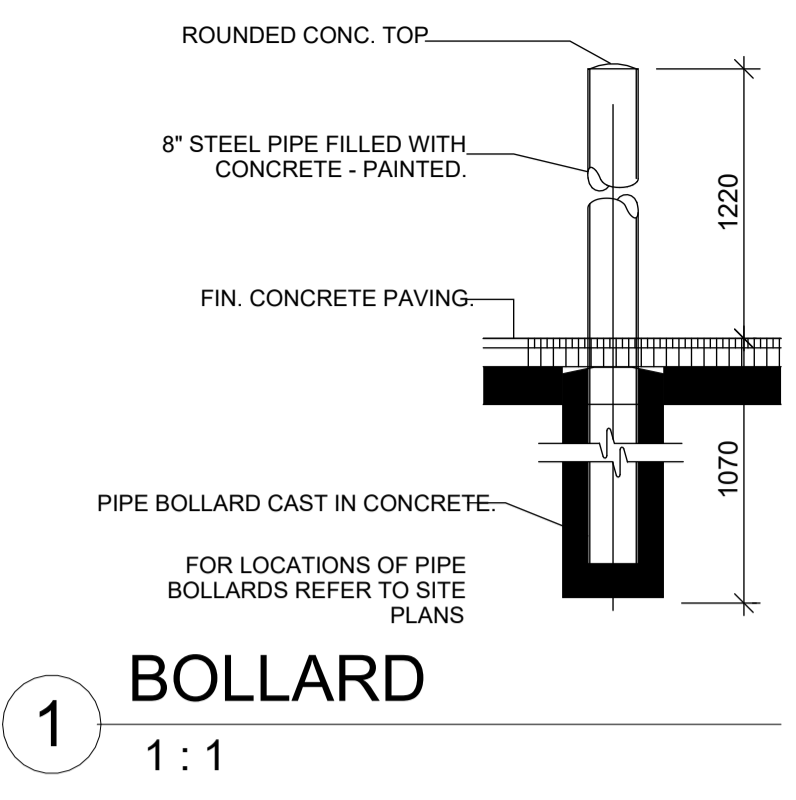
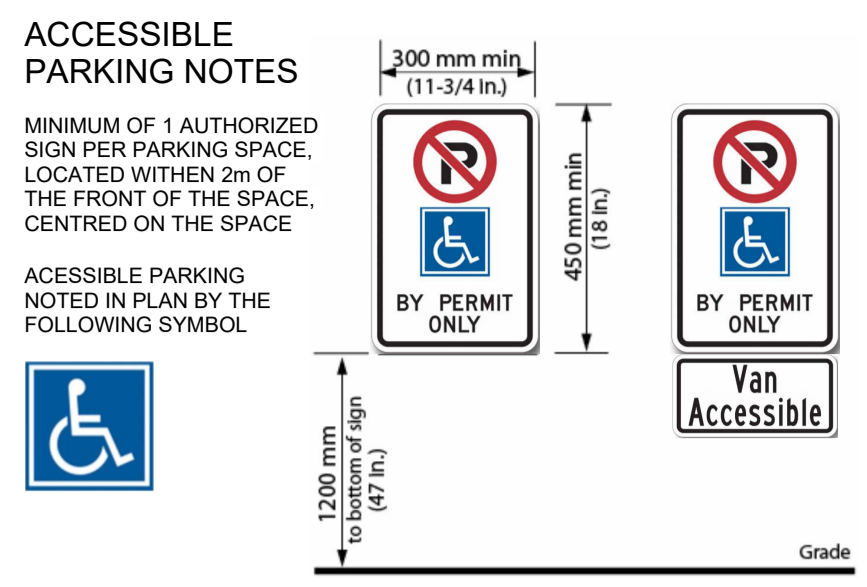
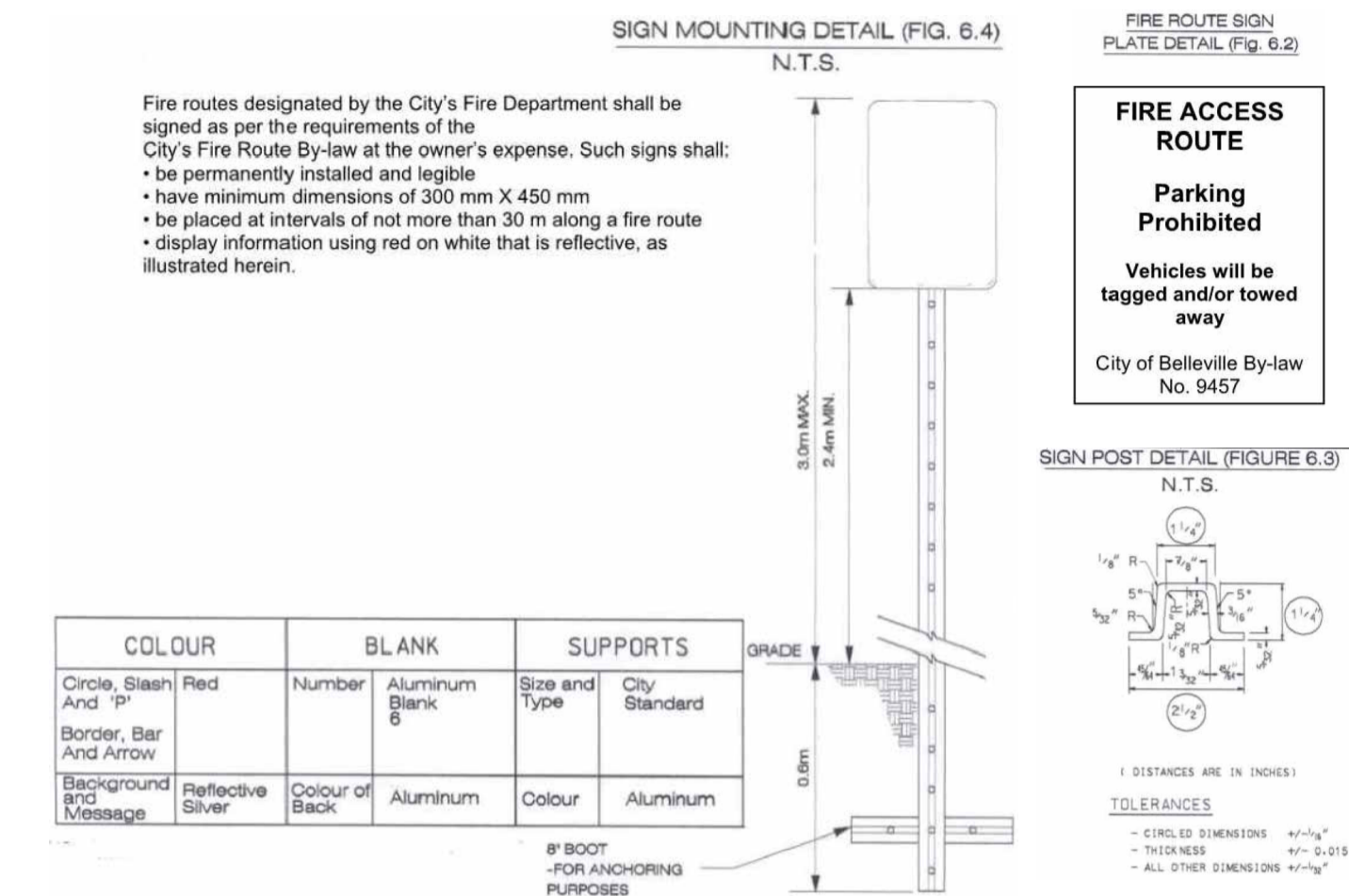
PROJECT NUMBER

2469

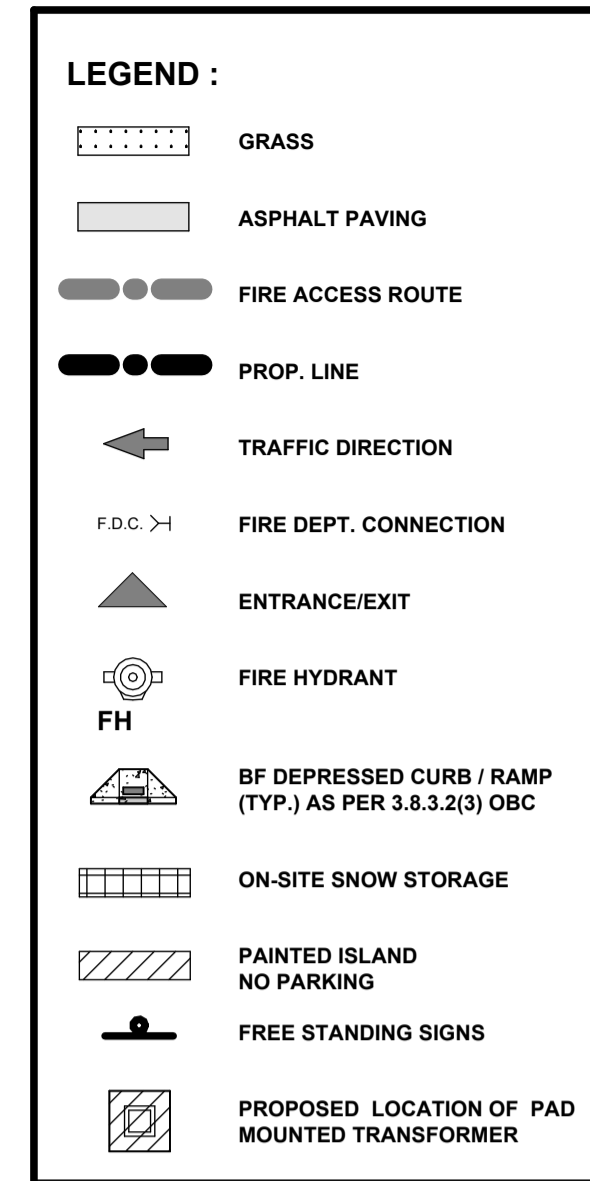
ISSUE DATE

DESIGNED FIRE ACCESS ROUTES, FIRE ROUTE SIGNS:

- 1) FIRE ROUTES SHALL BE PERMANENTLY MOUNTED ON A RIGID SIGN POST OR POLE.
- 2) BE ERRECTED AT A HEIGHT BETWEEN 1.9 AND 2.5 METERS AS MEASURED FROM THE TRAVELLED SURFACE OF THE FIRE ROUTE TO THE BOTTOM OF THE SIGN.
- 3) BE INSTALLED AT A DISTANCE OF 0.3 AND 3 METERS FROM THE TRAVELLED EDGES OF THE FIRE ROUTE AND
- 4) BE INSTALLED ALONG THE FIRE ROUTE AT INTERVALS NO GREATER THAN 30 METERS OR AT SUCH OTHER INTERVALS APPROVED BY THE CHIEF FIRE OFFICER, AS MAY BE REQUIRED TO CLEARLY IDENTIFY THE ROUTE.
- 5) THE DIRECTIONAL ARROWHEADS MAY BE DELETED EITHER LEFT OR RIGHT TO INDICATE THE BOUNDARIES OF THE FIRE ROUTE.



- GENERAL NOTES:**
1. ALL EXISTING PAVEMENT, CURBS, SIDEWALKS, DRIVEWAYS AND BOULEVARD AREAS DISTURBED BY THE CONSTRUCTION MUST BE REINSTATED TO THE SATISFACTION OF THE TOWN.
 2. A MINIMUM SETBACK OF 1.0m FROM STREET FURNITURE TO PROPOSED DRIVEWAYS AND SIDEWALKS SHALL BE MAINTAINED. ALL EXISTING STREET FURNITURE TO BE RELOCATED BY THE CONTRACTOR/OWNER TO A SETBACK OF 1.0m. THE COST OF THE RELOCATION OF ANY UTILITY IS THE RESPONSIBILITY OF THE DEVELOPER/OWNER.
 3. THE CONTRACTOR/OWNER IS RESPONSIBLE FOR ALL UTILITY LOCATES AND DAMAGE OR DISTURBANCE DURING CONSTRUCTION.
 4. ALL BARRIER FREE ENTRANCES AND BARRIER FREE PATHS OF TRAVEL MUST COMPLY WITH O.B.C. 3.8.
 5. THE OWNER/CONTRACTOR SHALL SUPPLY ALL FIRE ROUTE AND HANDICAP SIGNS AS SET OUT IN THE TOWN BY-LAWS AND DESIGN CRITERIA.
 6. ALL EXTERIOR ILLUMINATION TO BE DIRECTED DOWNWARD AS WELL AS INWARD AND DESIGNED TO MAINTAIN ZERO CUTOFF LIGHT DISTRIBUTION AS THE PROPERTY LINE.
 7. ALL DOWNSPOUTS TO BE CONNECTED TO THE STORM DRAINAGE SYSTEM.
 8. ALL CONDENSING UNITS TO BE SCREENED ON THE GROUND FLOOR.
 9. SEPARATE PERMITS ARE REQUIRED FOR ANY SIGNAGE ON THE PROPERTY.
 10. WHERE POSSIBLE TREES ARE TO BE PROTECTED FROM CONSTRUCTION.
 11. EXCESS SNOW WILL BE REMOVED BY PRIVATE HAULER SUBJECT TO DEMAND FOR PARKING.
 12. REBOUNDING SIGN POST MOUNTED ON CURB. MANUFACTURE: IMPACT RECOVERY (<http://www.impactrecovery.com/>) STYLE: Sta-Rite Sign Posts. SIGN MOUNTING HEIGHT & SIGN AS PER TOWN ACCESSIBILITY STANDARDS



ABBREVIATIONS

CD	CURB DEPRESSION
RD	ROOF DRAIN
FFL	FINISHED FLOOR LEVEL
FRS	FIRE ACCESS ROUTE SIGN
APS	ACCESSIBLE PARKING SIGN
OH	OVERHEAD DOOR
FH	FIRE-HYDRANT
FDC	FIRE DEPARTMENT CONNECTION

DO NOT SCALE DRAWINGS

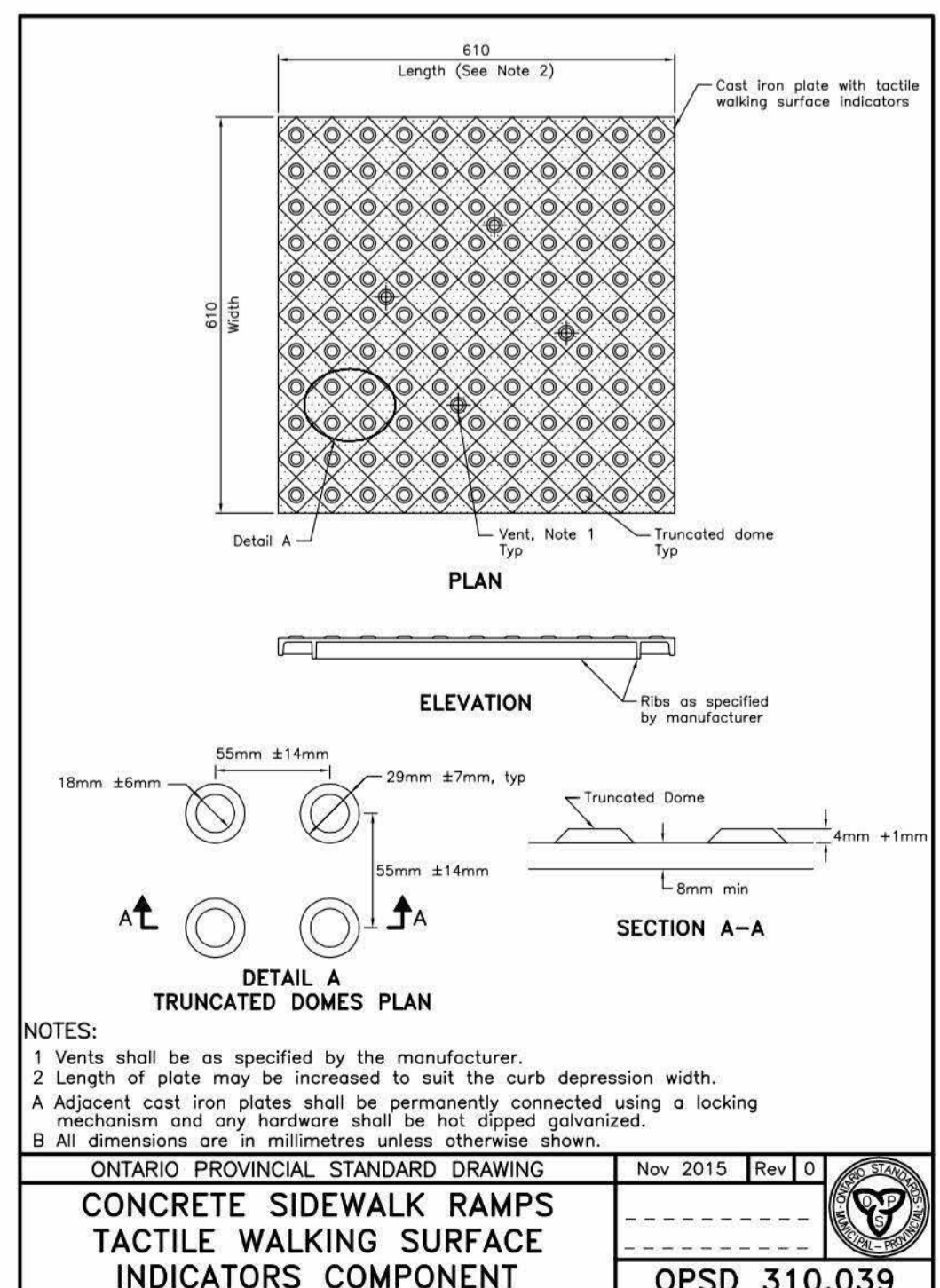
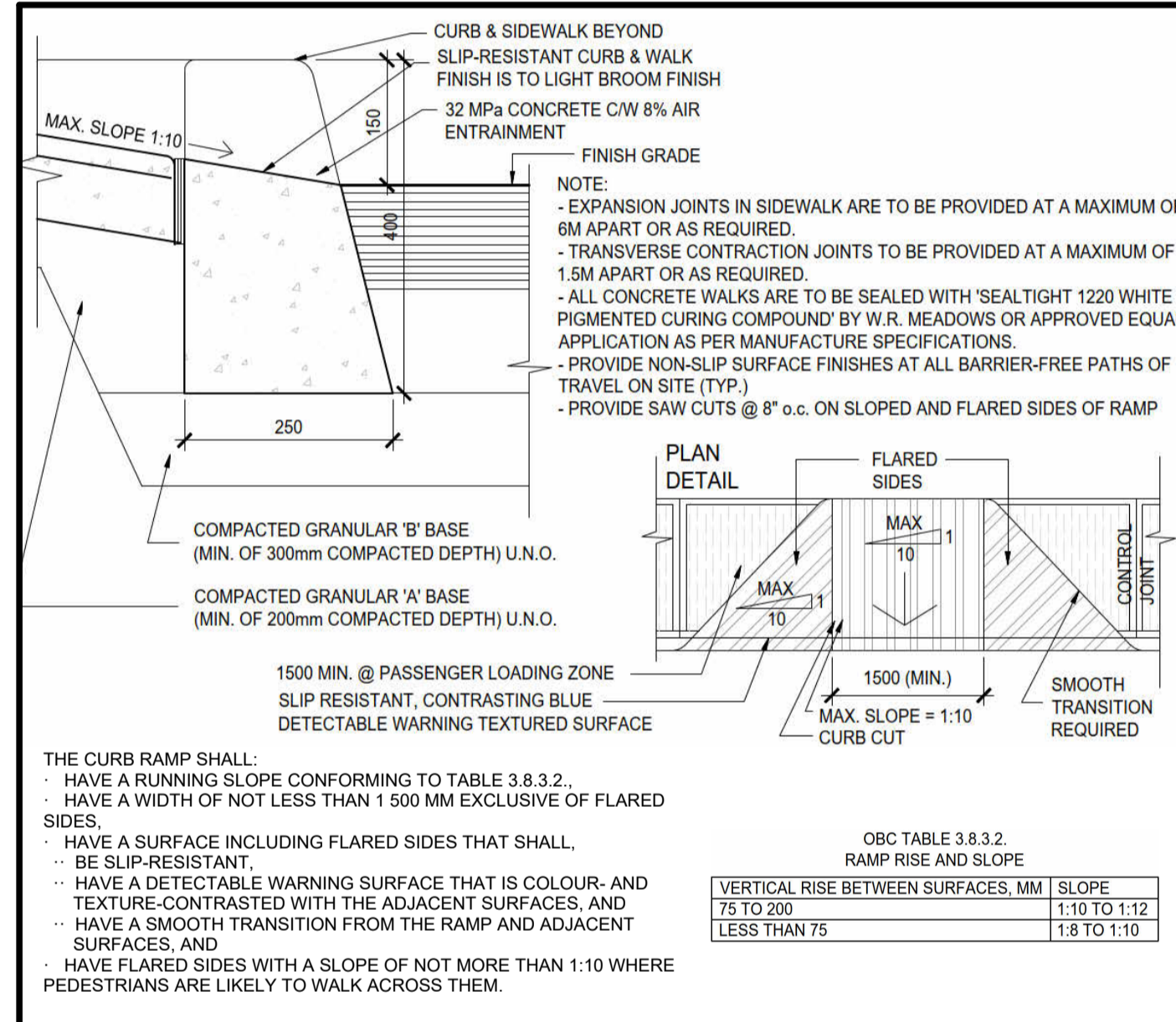
CHECK AND VERIFY ALL DIMENSIONS BEFORE PROCEEDING WITH THE WORK.

DRAWINGS NOT TO BE USED FOR CONSTRUCTION UNLESS STAMPED AND SIGNED BY THE CONSULTANT.

THESE DRAWINGS HAVE BEEN DESIGNED IN CONFORMANCE WITH THE ONTARIO BUILDING CODE.

Revisions

Revision Number	Revision Date	Revision Description



Alexander Wilson Architect Inc
Admiralty Place
103-20 Gore Street
Kingston Ontario, K7L 2L1
t: 613.545.3744 ext 213
f: 613.545.1411

MOODIE FALLOWFIELD WAREHOUSE PROJECT

OTTAWA, ON

SITE DETAILS

Drawn By	Author	Checked By	Checker
Scale	As Indicated	Date	09/12/19
Project No.	2469	Revision	Current version
Drawing No.	A012		

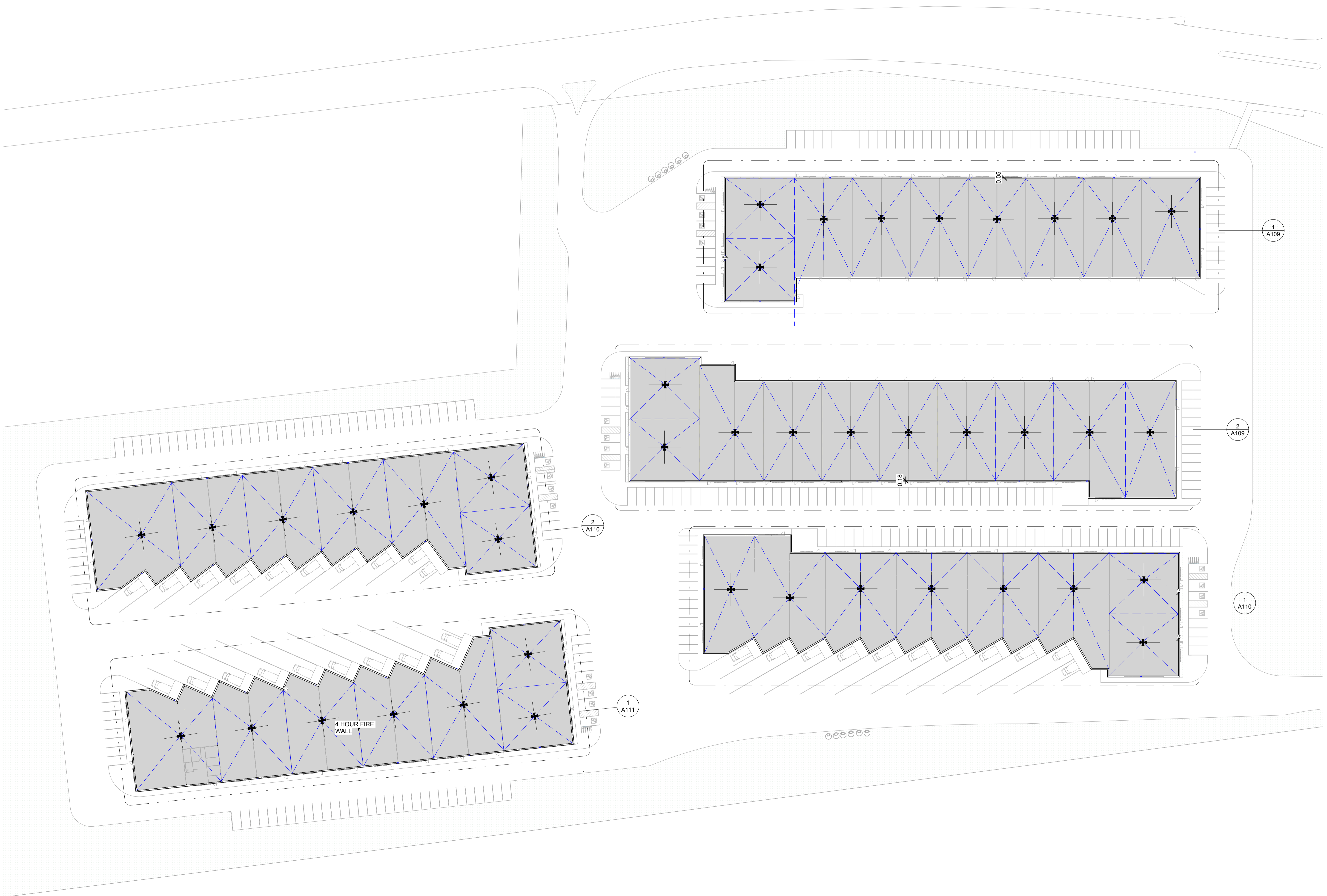
DO NOT SCALE DRAWINGS

CHECK AND VERIFY ALL DIMENSIONS BEFORE PROCEEDING WITH THE WORK.

DRAWINGS NOT TO BE USED FOR CONSTRUCTION UNLESS STAMPED AND SIGNED BY THE CONSULTANT.

THESE DRAWINGS HAVE BEEN DESIGNED IN CONFORMANCE WITH THE ONTARIO BUILDING CODE.

Revisions		
Revision Number	Revision Date	Revision Description



 **Alexander Wilson Architect Inc**
Admiralty Place
103-20 Gore Street
Kingston Ontario, K7L 2L1
t: 613.545.3744 ext 213
f: 613.545.1411

Stamp

Project
MOODIE FALLOWFIELD WAREHOUSE PROJECT

OTTAWA, ON

Drawing

MASTER ROOF PLAN

Drawn By	Author	Checked By	Checker
Scale	1 : 500	Date	07/29/19
Project No.	2469	Revision	Current version

Drawing No. **A108**

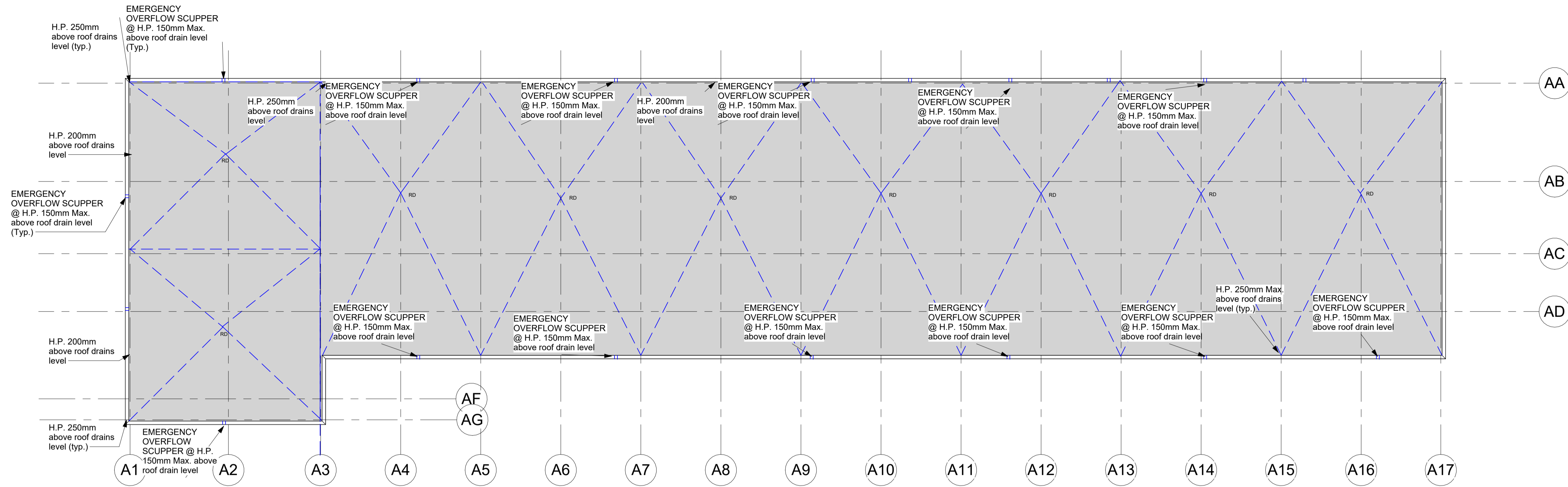
DO NOT SCALE DRAWINGS

CHECK AND VERIFY ALL DIMENSIONS BEFORE PROCEEDING WITH THE WORK.

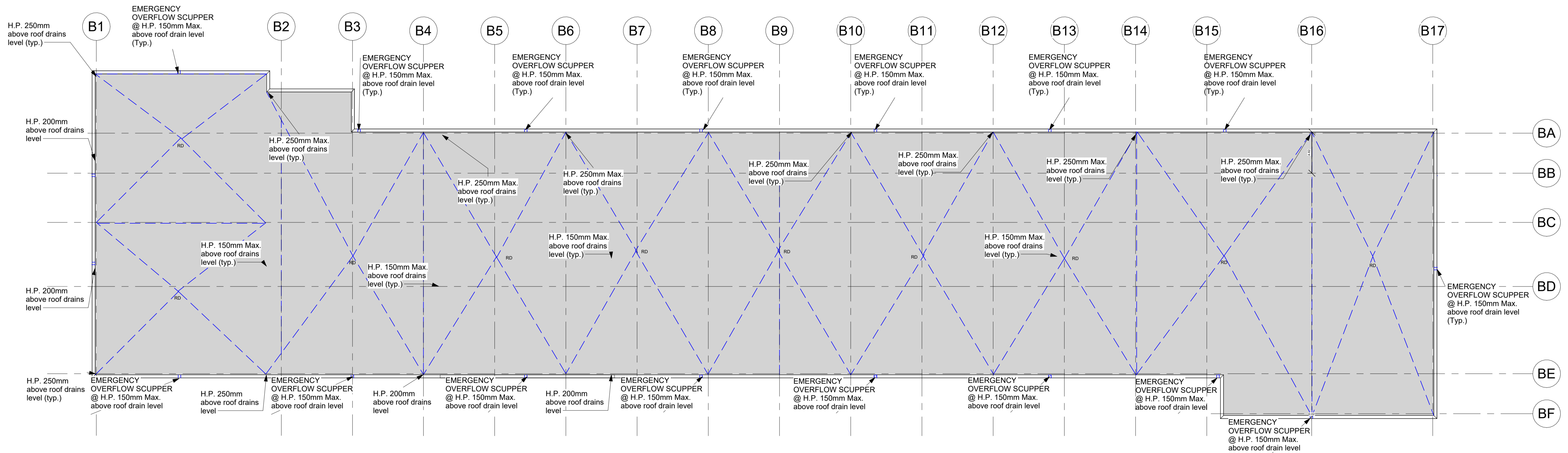
DRAWINGS NOT TO BE USED FOR CONSTRUCTION UNLESS STAMPED AND SIGNED BY THE CONSULTANT.

THESE DRAWINGS HAVE BEEN DESIGNED IN CONFORMANCE WITH THE ONTARIO BUILDING CODE.

Revisions		
Revision Number	Revision Date	Revision Description



1 ROOF PLAN - BUILDING A
1 : 250



2 ROOF PLAN - BUILDING B
1 : 250

A Alexander Wilson Architect Inc
Admiralty Place
103-20 Gore Street
Kingston Ontario, K7L 2L1
t: 613.545.3744 ext 213
f: 613.545.1411

Stamp

Project
MOODIE FALLOWFIELD WAREHOUSE PROJECT

OTTAWA, ON

Drawing

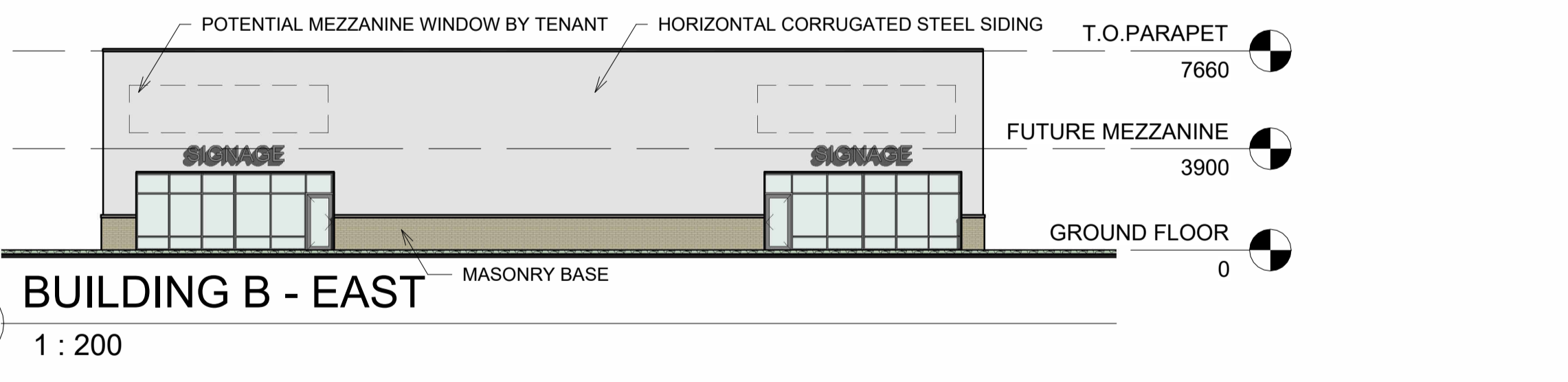
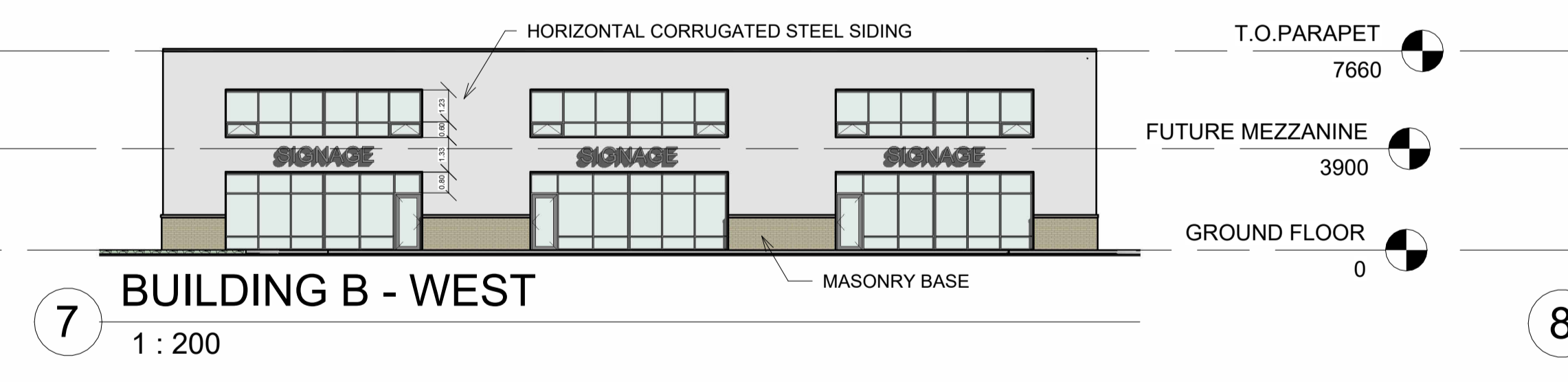
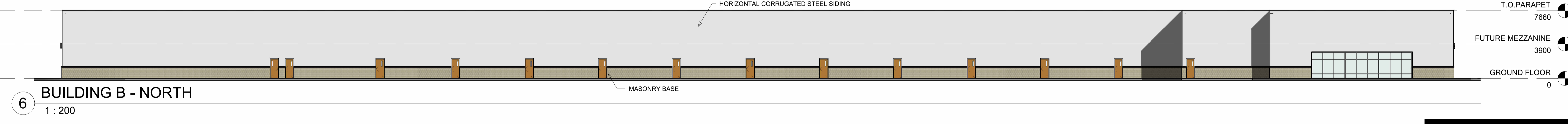
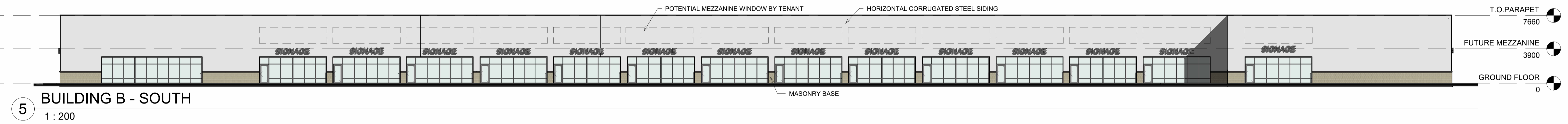
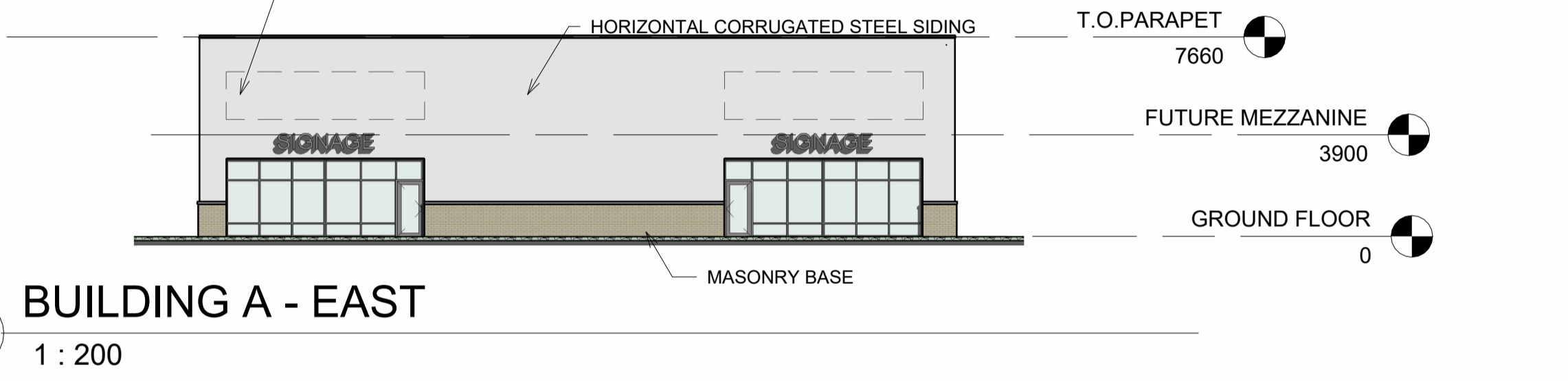
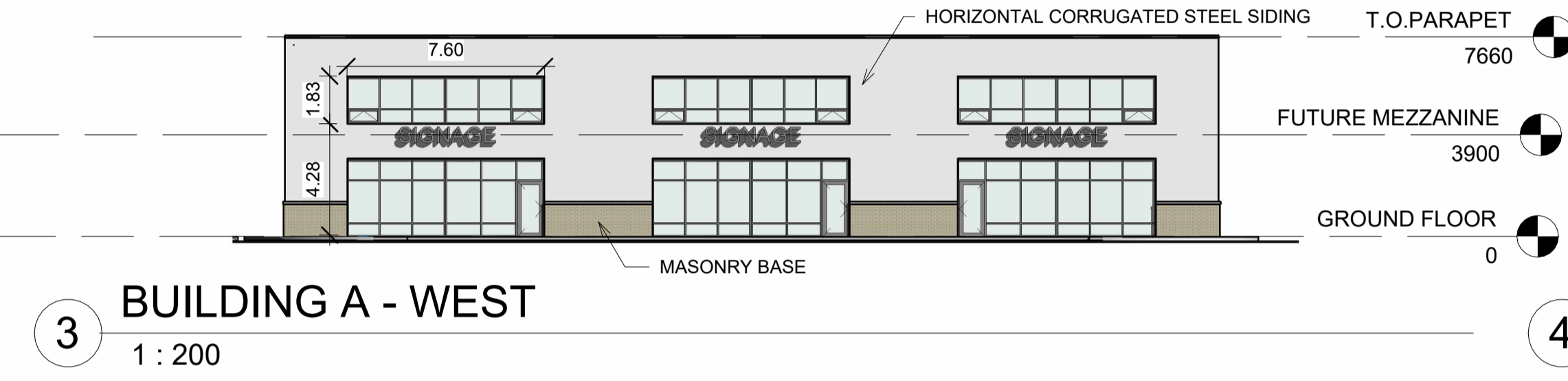
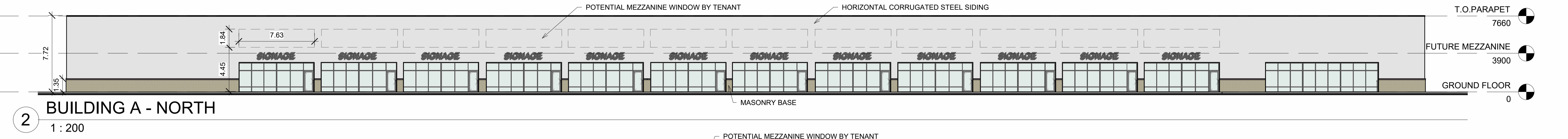
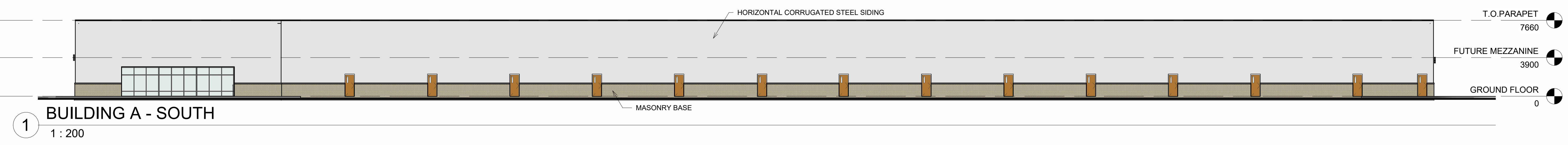
ROOF PLAN - BUILDING A AND B

Drawn By	Author	Checked By	Checker
----------	--------	------------	---------

Scale	1 : 250	Date	07/29/19
-------	---------	------	----------

Project No.	2469	Revision	Current version
-------------	------	----------	-----------------

Drawing No. **A109**



DO NOT SCALE DRAWINGS
CHECK AND VERIFY ALL DIMENSIONS BEFORE PROCEEDING WITH THE WORK.
DRAWINGS NOT TO BE USED FOR CONSTRUCTION UNLESS STAMPED AND SIGNED BY THE CONSULTANT.
THESE DRAWINGS HAVE BEEN DESIGNED IN CONFORMANCE WITH THE ONTARIO BUILDING CODE.

Revisions		
Revision Number	Revision Date	Revision Description
1	04-22-2025	ISSUED FOR PRE-CONSULT

Alexander Wilson Architect Inc
Admiralty Place
103-20 Gore Street
Kingston Ontario, K7L 2L1
t: 613.545.3744 ext 213
f: 613.545.1411

Project
MOODIE FALLOWFIELD WAREHOUSE PROJECT

Ottawa, ON
Drawing

BLDG A & B ELEVATIONS

Drawn By	FAHD A.Z.	Checked By	
Scale	1 : 200	Date	11-2018
Project No.	2469	Revision	Current version
Drawing No.	A300		

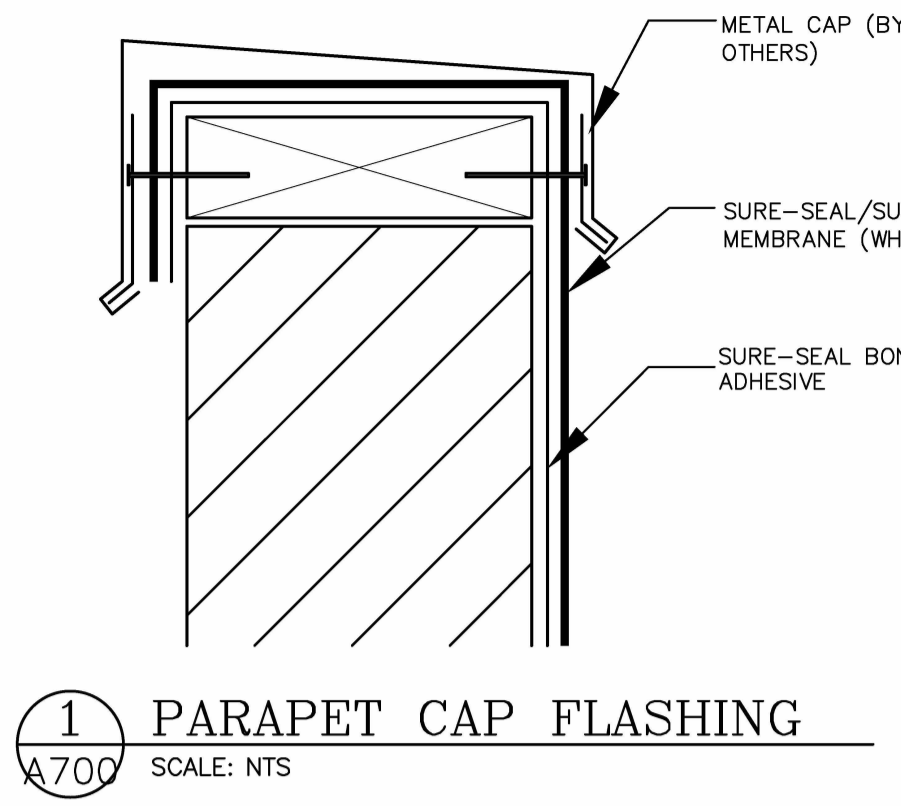
DO NOT SCALE DRAWINGS

CHECK AND VERIFY ALL DIMENSIONS BEFORE PROCEEDING WITH THE WORK.

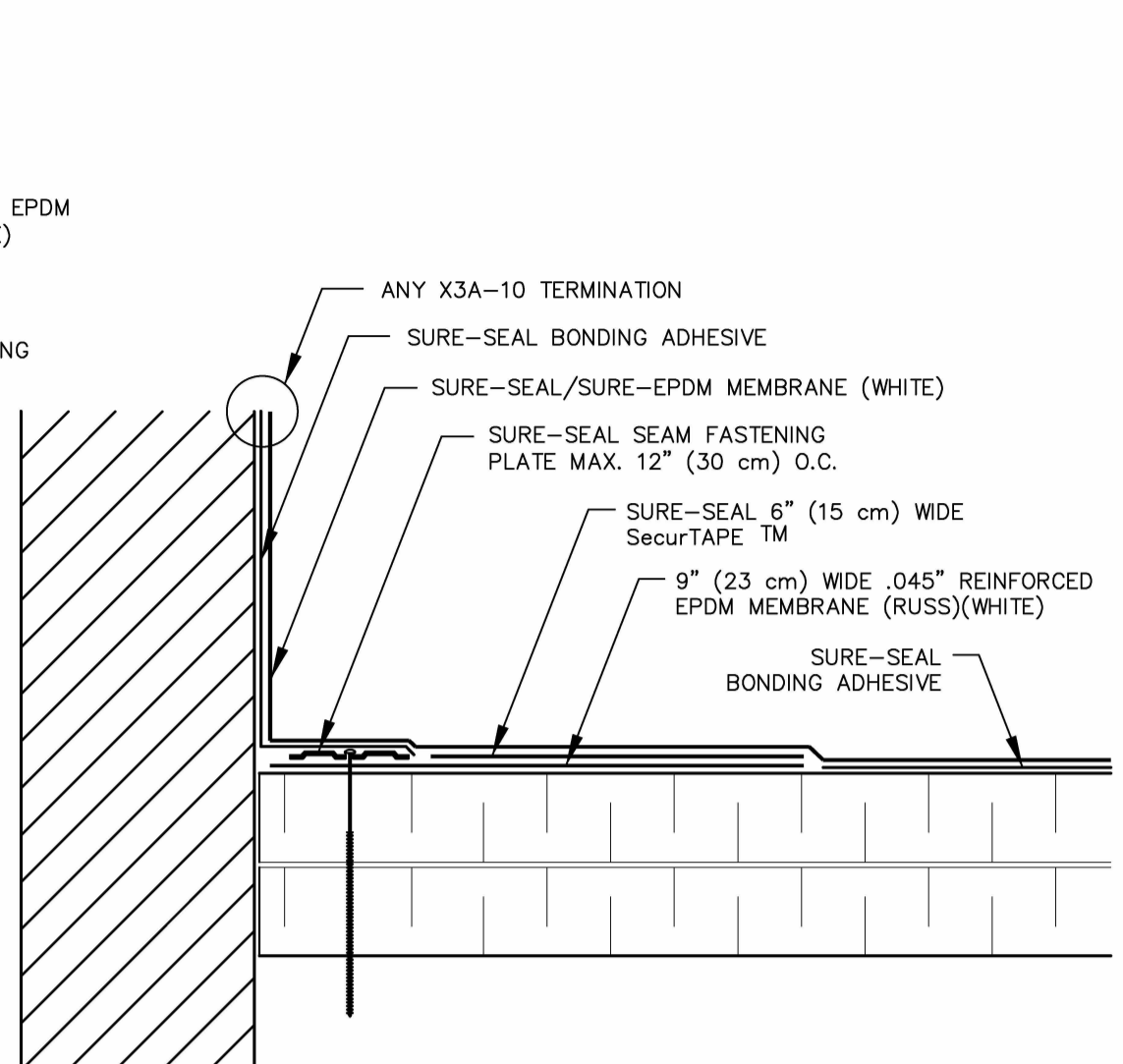
DRAWINGS NOT TO BE USED FOR CONSTRUCTION UNLESS STAMPED AND SIGNED BY THE CONSULTANT.

THESE DRAWINGS HAVE BEEN DESIGNED IN COMPLIANCE WITH THE ONTARIO BUILDING CODE.

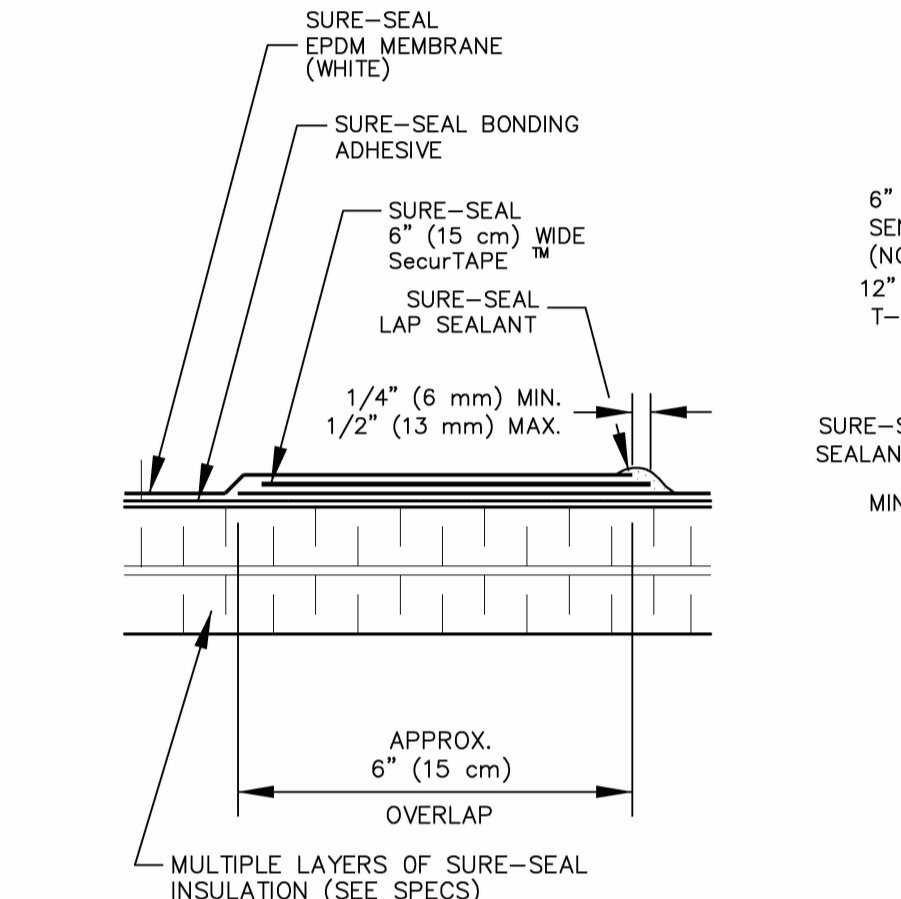
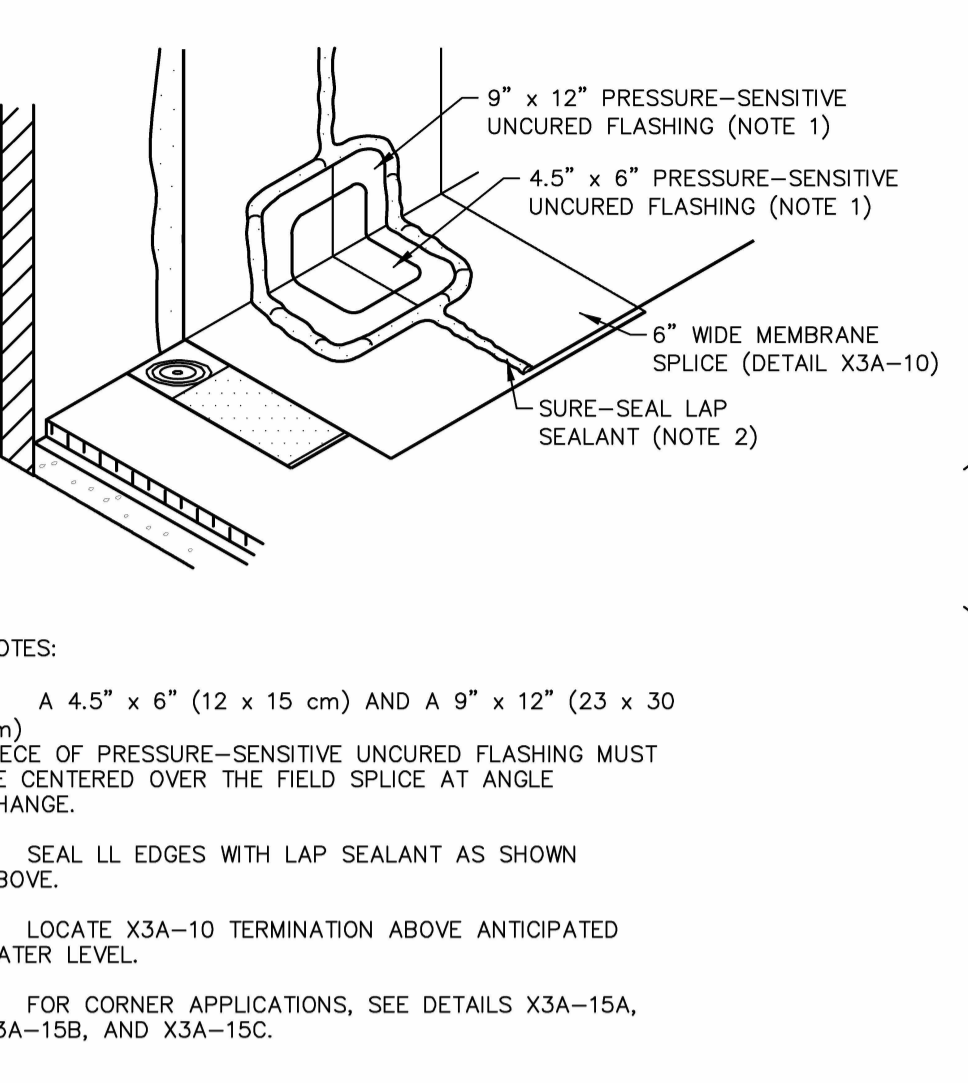
Revisions		
Revision Number	Revision Date	Revision Description



1 PARAPET CAP FLASHING
SCALE: NTS

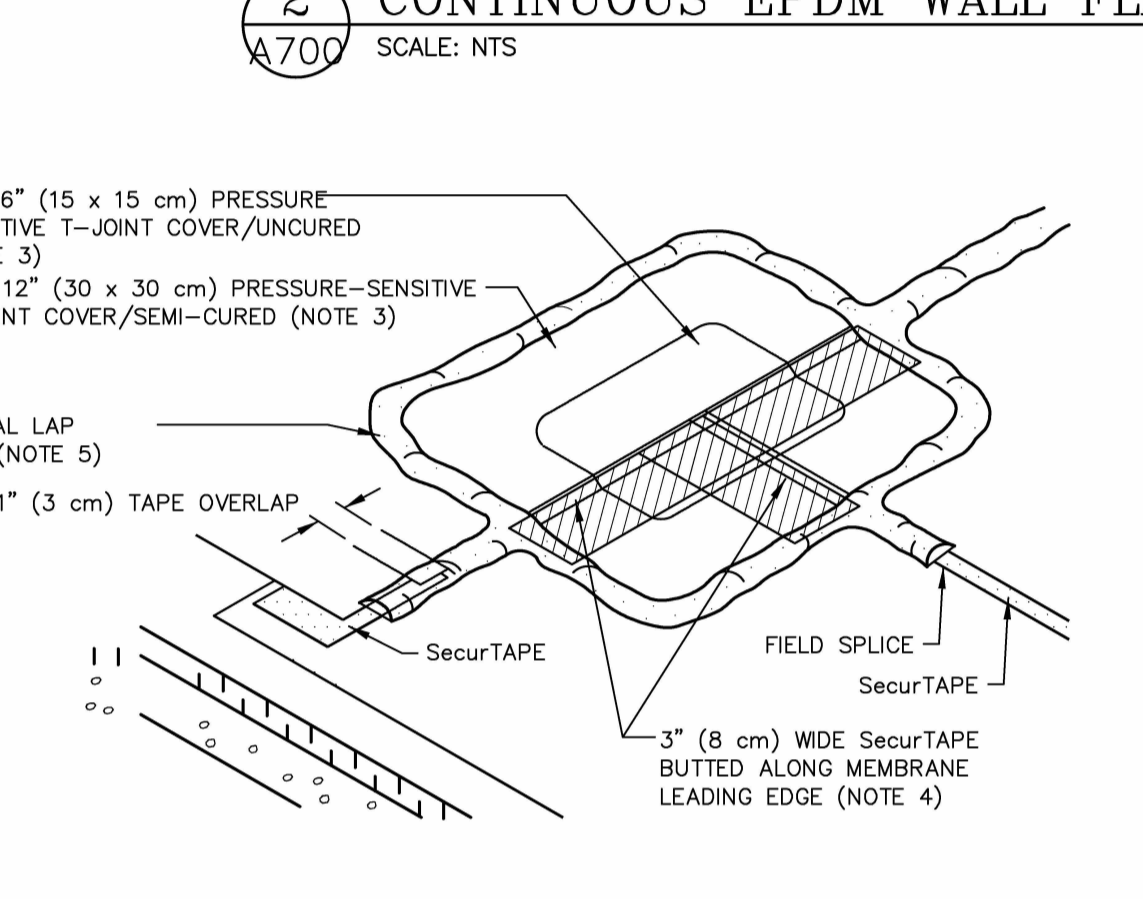


2 CONTINUOUS EPDM WALL FLASHING DETAIL
SCALE: NTS

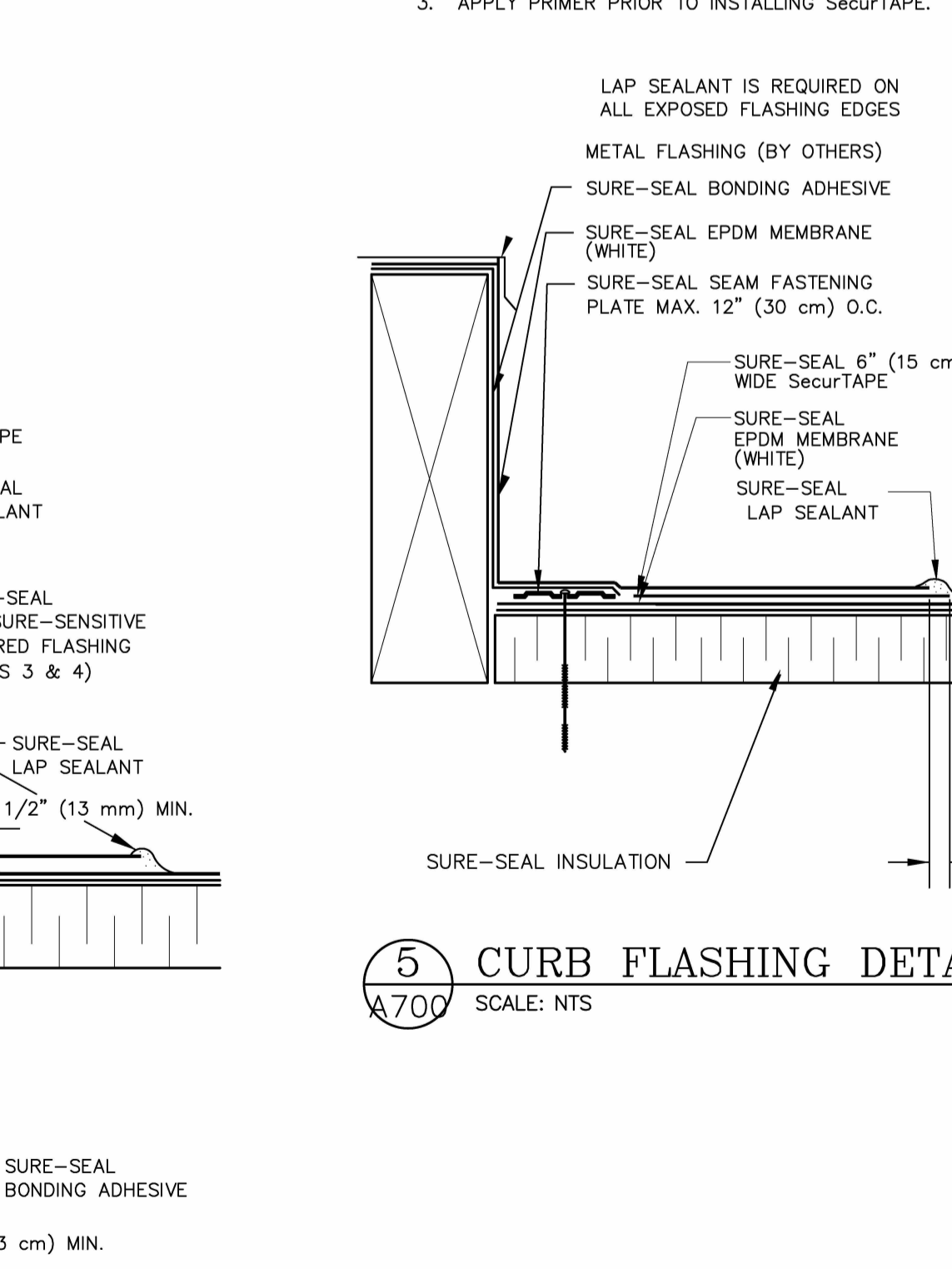


3 MEMBRANE SPLICE DETAIL
SCALE: NTS

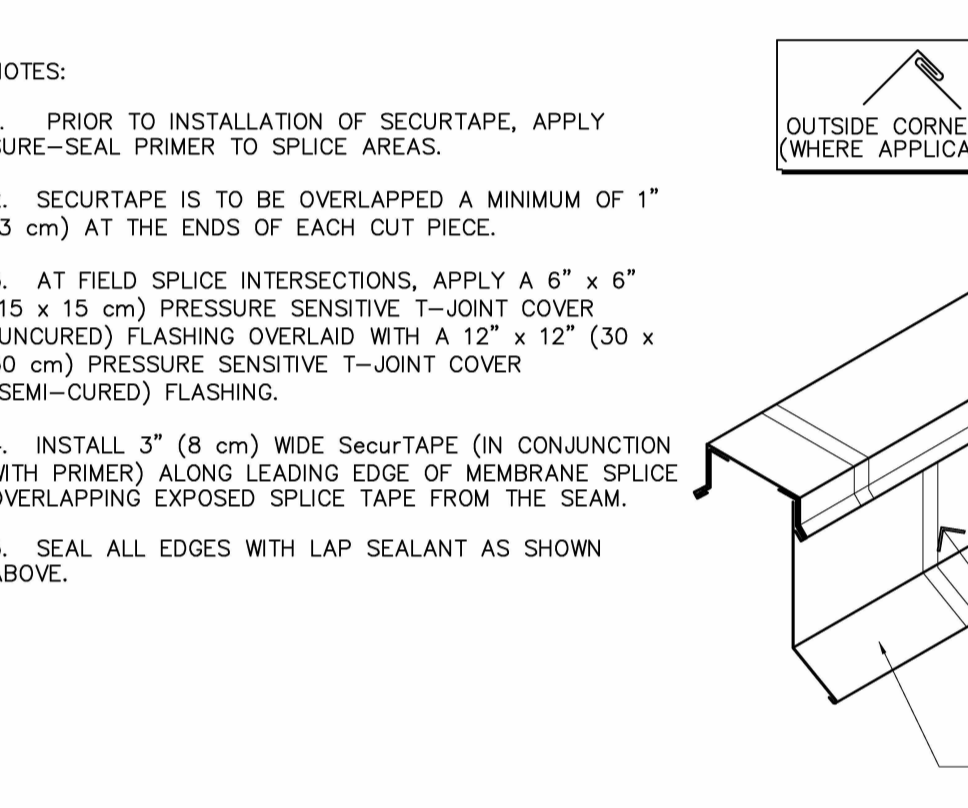
NOTES:
1. REMOVE ALL LEAD AND OTHER FLASHING BEFORE INSTALLING FIELD-FABRICATED PIPE SEAL.
2. MEMBRANE SECUREMENT REQUIRED AROUND ALL PIPES GREATER THAN 18 INCHES (50 cm) IN DIAMETER.
3. PRESSURE-SENSITIVE UNCURED FLASHING WRAPPED AROUND THE PIPE SHALL HAVE 3\"/>



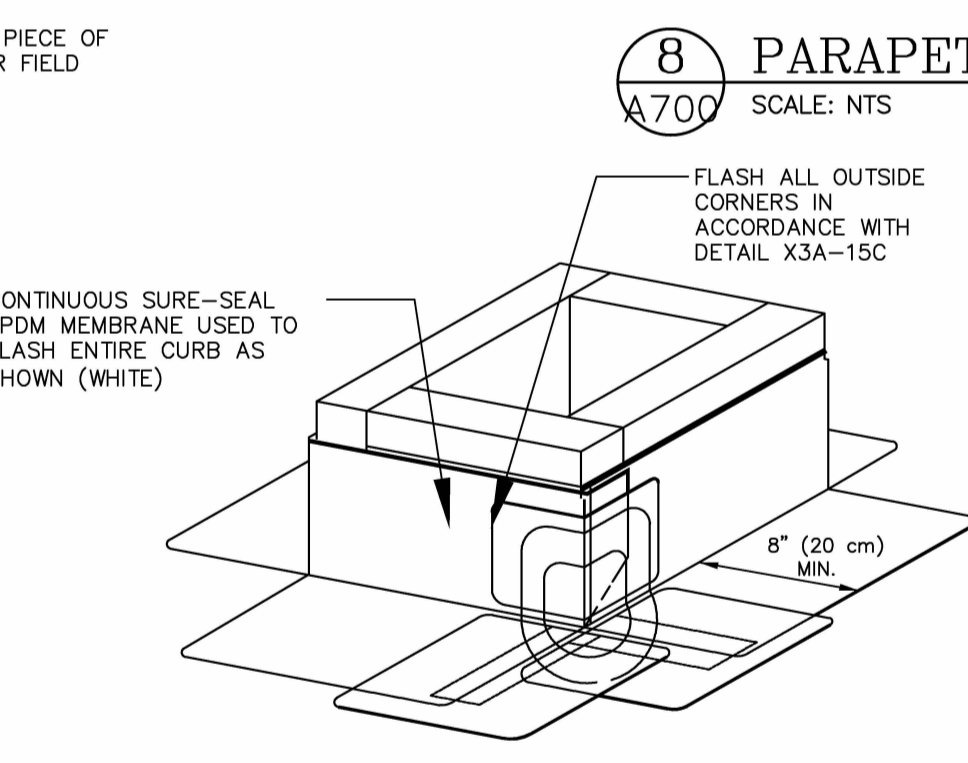
5 CURB FLASHING DETAIL
SCALE: NTS



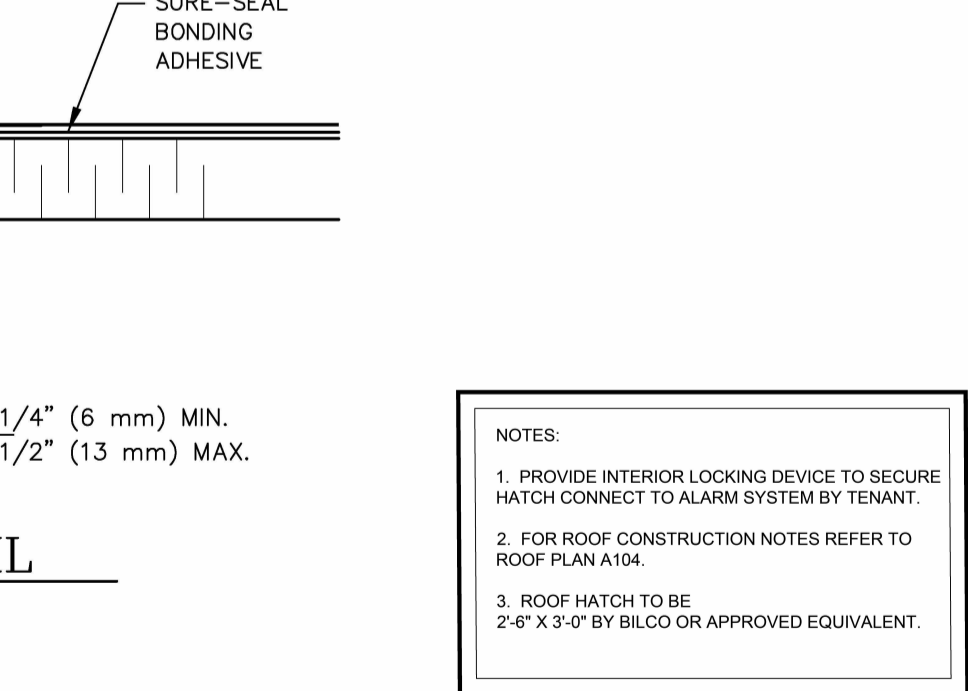
6 OVERFLOW METAL SCUPPER DETAIL
SCALE: NTS



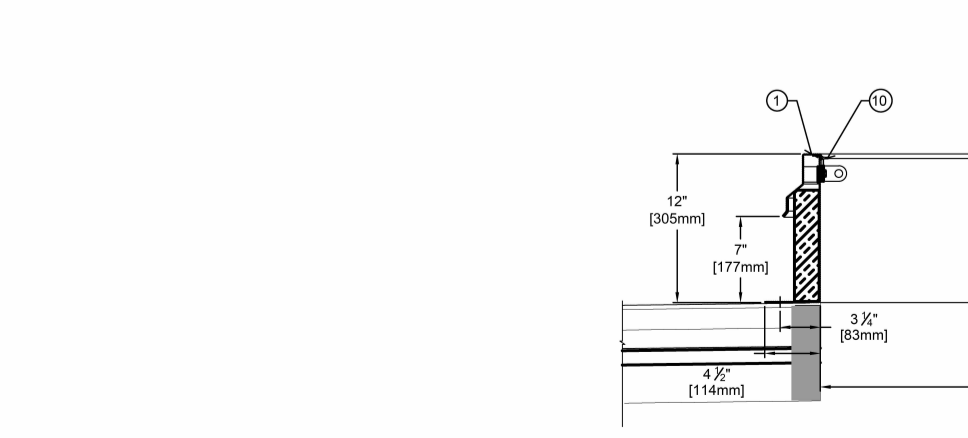
7 ROOF DRAIN DETAIL
SCALE: NTS



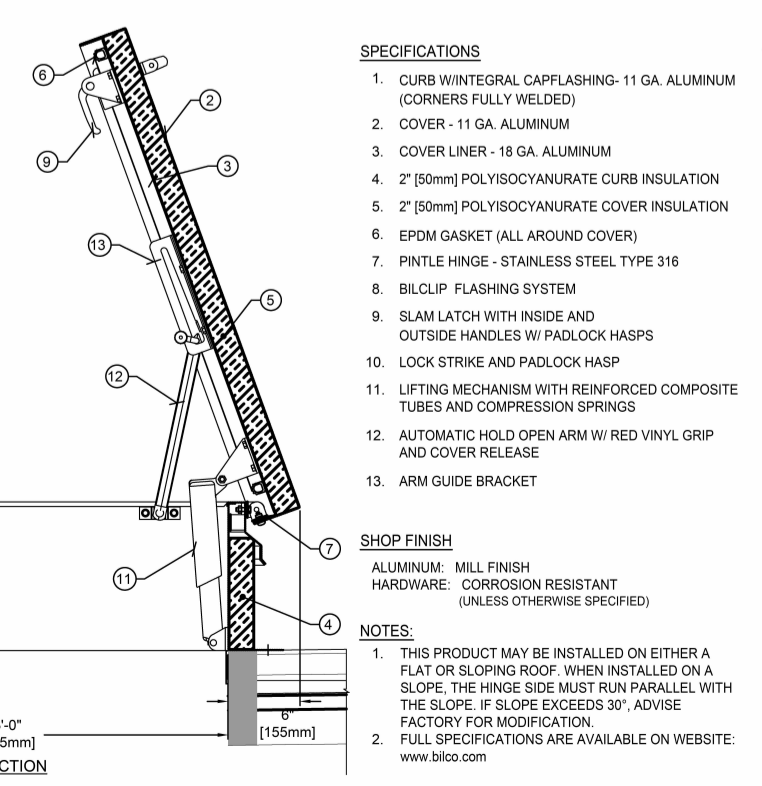
8 PARAPET FLASHING
SCALE: NTS



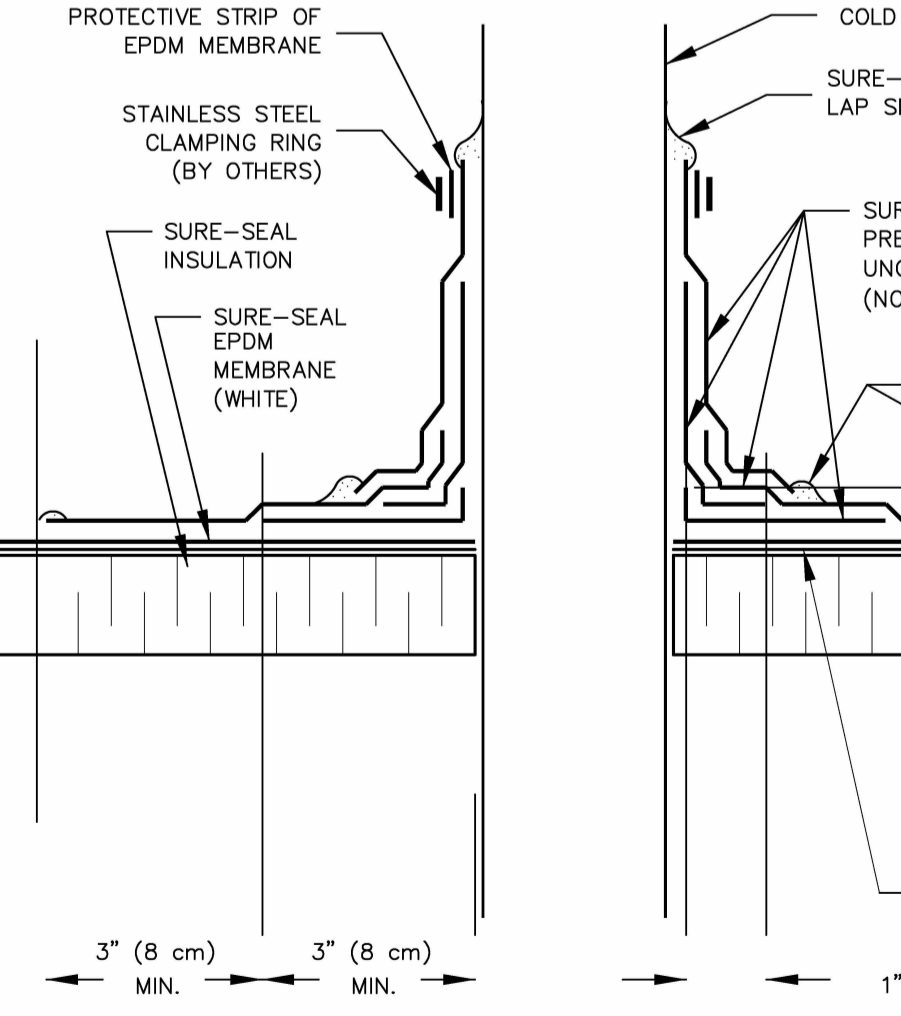
9 DETAIL A: COLD PIPE THROUGH EPDM ROOF
SCALE: NTS



10 DETAIL B: HOT PIPE THROUGH EPDM ROOF
SCALE: NTS



11 INSULATED PIPE ENCLOSURE
SCALE: NTS



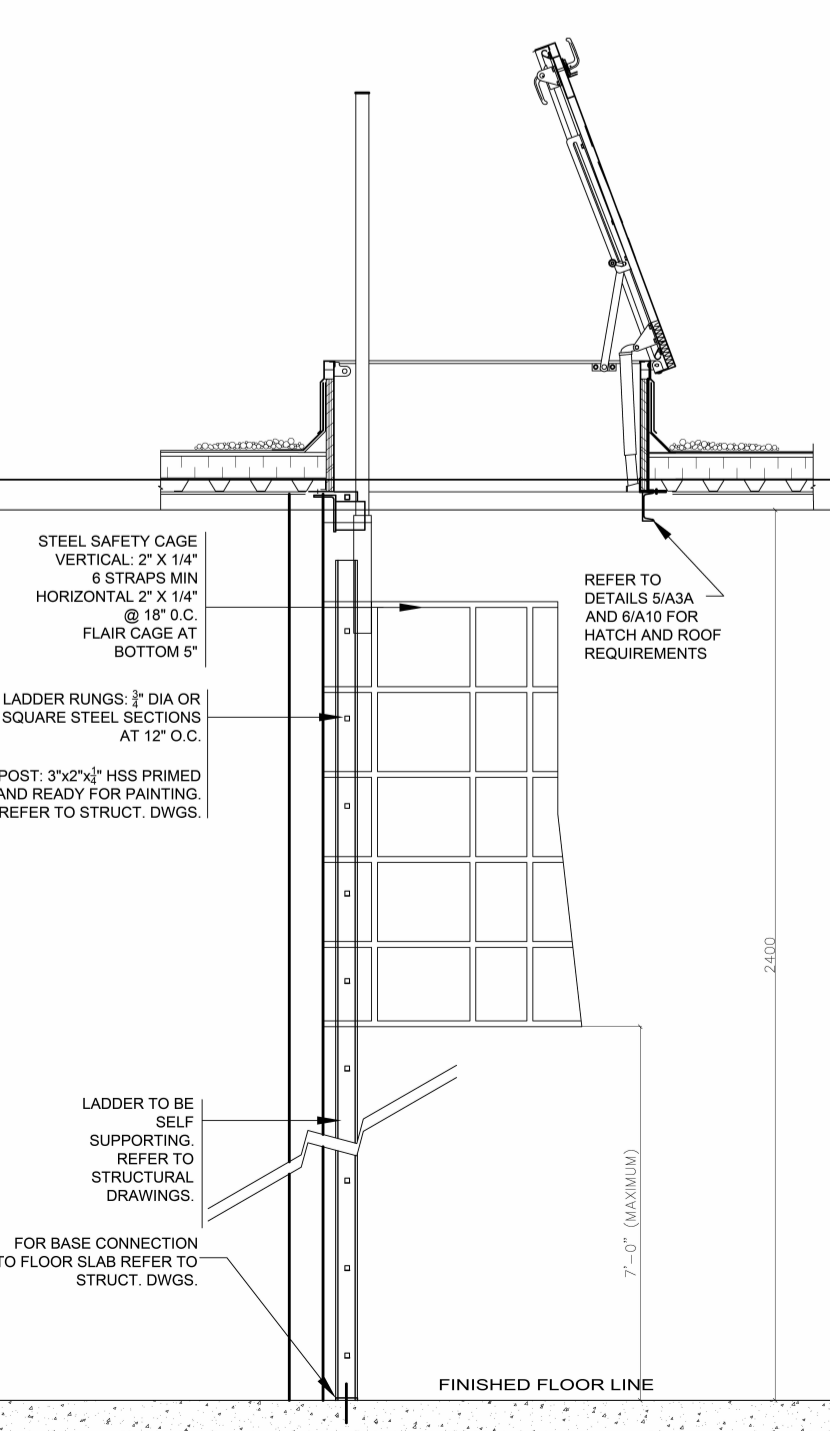
4 FIELD FABRICATED PIPE SEAL
SCALE: NTS

4 FIELD FABRICATED PIPE SEAL
SCALE: NTS

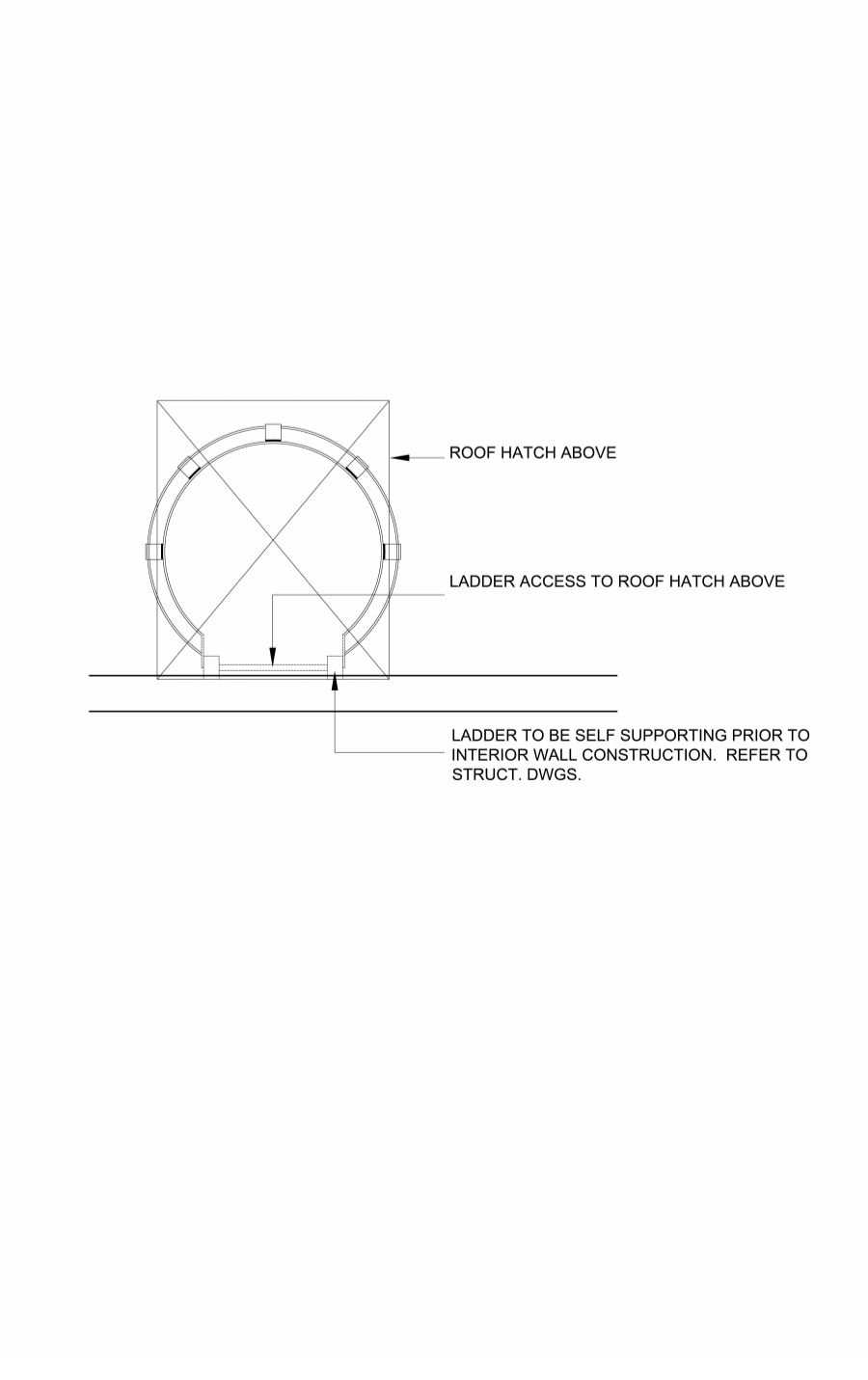
5 CURB FLASHING DETAIL
SCALE: NTS

5 CURB FLASHING DETAIL
SCALE: NTS

12 ROOF HATCH DETAIL
SCALE: 1:20



11 INSULATED PIPE ENCLOSURE
SCALE: NTS



GENERAL NOTES:
1. ALL DETAILS TO BE CO-ORDINATE WITH MECHANICAL/ELECTRICAL AND STRUCTURAL DRAWINGS AND ROOFING CONTRACTOR PRIOR TO INSTALLATION.
2. REFER TO SPECIFICATION FOR DETAILED MATERIALS AND INSTALLATION INSTRUCTIONS.
3. DETAILS SHOWN ARE POSSIBLE CONDITIONS AND NOT ALL MAY BE APPLICABLE.
4. ALL ANCHORING & BONDING TO BE SIZED AND LOCATED ON STRUCTURAL DRAWINGS.
5. FABRICATION AND INSTALLATION DRAWINGS ARE REQUIRED TO BE SUBMITTED FOR ALUMINUM ENTRY SYSTEM FOR APPROVAL PRIOR TO INSTALLATION.
6. ROOF MEMBRANE TO BE SINGLE PLY WHITE EPDM MECHANICALLY FASTENED.

A Alexander Wilson Architect Inc
Admiralty Place
103-20 Gore Street
Kingston Ontario, K7L 2L1
t: 613.545.3744 ext 213
f: 613.545.1411

Project
MOODIE FALLOWFIELD WAREHOUSE PROJECT

OTTAWA, ON

Roof Details

Drawn By	Author	Checked By	Checker

Scale	Date

Project No.	Revision	Current version
2469		

Drawing No. **A700**