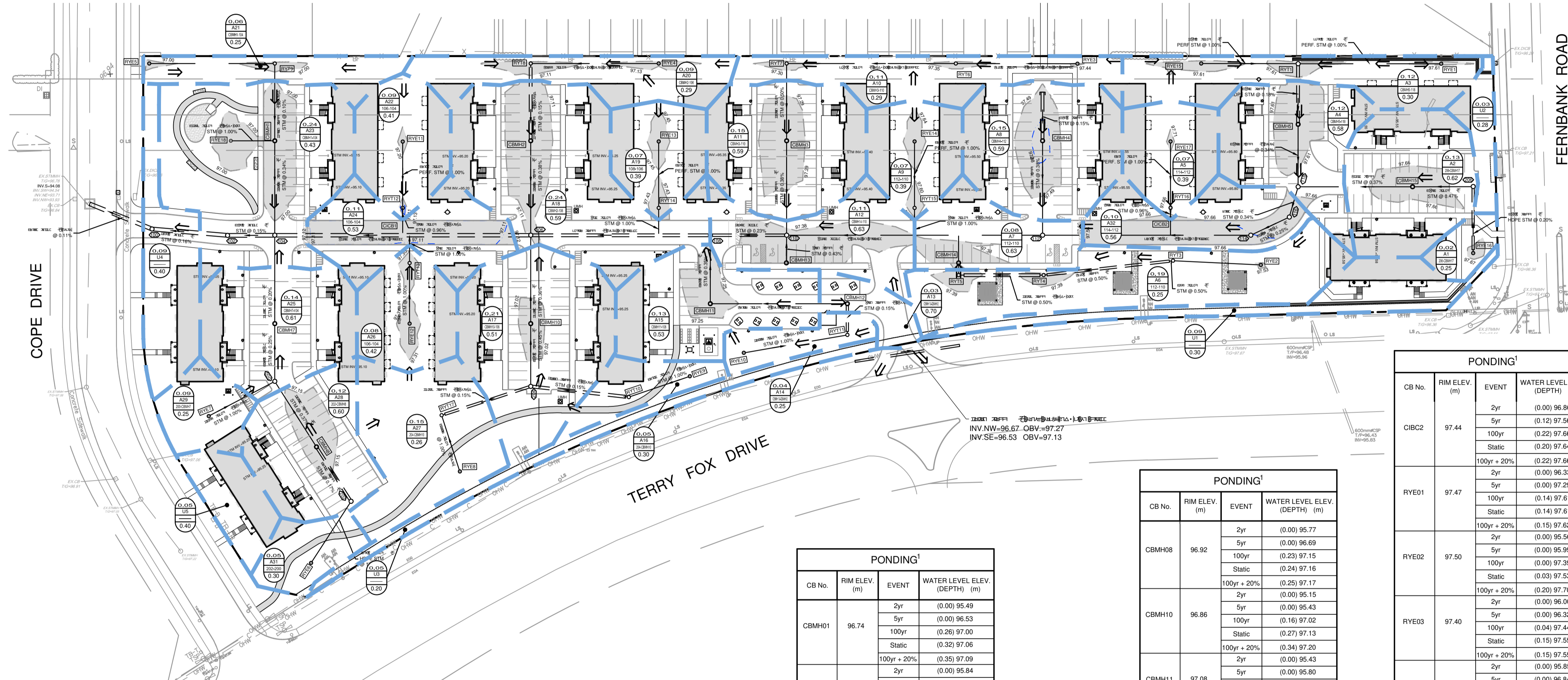


NOTES:
*100 YEAR PONDING DEPTH IS GREATER THAN THE STATIC PONDING DEPTH DUE TO CASCADING WATER INTO THE NEXT AREA. THIS HAS BEEN ACCOUNTED FOR IN THE STORMWATER MANAGEMENT REPORT AND CONFORMS TO THE ALLOWABLE RELEASE RATE FROM THE SITE.



PONDING¹

CB No.	RIM ELEV. (m)	EVENT	WATER LEVEL ELEV. (DEPTH) (m)
CBMH01	96.74	2yr	(0.00) 95.49
		5yr	(0.00) 96.53
		100yr	(0.26) 97.00
		Static	(0.32) 97.06
CBMH02	96.84	2yr	(0.00) 95.84
		5yr	(0.00) 96.84
		100yr	(0.27) 97.11
		Static	(0.27) 97.11
CBMH03	97.10	2yr	(0.00) 95.76
		5yr	(0.00) 96.31
		100yr	(0.19) 97.29
		Static	(0.28) 97.38
CBMH04	97.31	2yr	(0.00) 97.15
		5yr	(0.07) 97.38
		100yr	(0.18) 97.49
		Static	(0.23) 97.54
CBMH05	97.38	2yr	(0.00) 97.29
		5yr	(0.00) 97.61
		100yr	(0.23) 97.61
		Static	(0.30) 97.68
CBMH07	96.78	2yr	(0.00) 94.72
		5yr	(0.00) 94.77
		100yr	(0.00) 95.12
		Static	(0.30) 97.08

BASED ON PCSWMM MODEL (3-HOUR CHICAGO STORM DISTRIBUTION)

PONDING¹

CB No.	RIM ELEV. (m)	EVENT	WATER LEVEL ELEV. (DEPTH) (m)
CBMH08	96.92	2yr	(0.00) 95.77
		5yr	(0.00) 96.69
		100yr	(0.23) 97.15
		Static	(0.24) 97.16
CBMH10	96.86	2yr	(0.00) 95.43
		5yr	(0.00) 96.02
		100yr	(0.16) 97.02
		Static	(0.27) 97.13
CBMH11	97.08	2yr	(0.00) 95.43
		5yr	(0.00) 95.80
		100yr	(0.17) 97.25
		Static	(0.17) 97.25
CBMH12	97.55	2yr	(0.00) 95.43
		5yr	(0.00) 95.80
		100yr	(0.11) 97.66
		Static	(0.11) 97.66
CBMH13	97.23	2yr	(0.00) 97.04
		5yr	(0.00) 97.04
		100yr	(0.15) 97.38
		Static	(0.14) 97.37
CBMH14	97.23	2yr	(0.00) 95.55
		5yr	(0.00) 95.99
		100yr	(0.15) 97.38
		Static	(0.11) 97.34
CBMH15	97.50	2yr	(0.00) 94.42
		5yr	(0.00) 94.42
		100yr	(0.16) 97.66
		Static	(0.25) 97.75

BASED ON PCSWMM MODEL (3-HOUR CHICAGO STORM DISTRIBUTION)

PONDING¹

CB No.	RIM ELEV. (m)	EVENT	WATER LEVEL ELEV. (DEPTH) (m)
CIBC2	97.44	2yr	(0.00) 96.86
		5yr	(0.12) 97.56
		100yr	(0.22) 97.66
		Static	(0.20) 97.64
RYE01	97.47	2yr	(0.00) 96.33
		5yr	(0.00) 97.29
		100yr	(0.14) 97.61
		Static	(0.14) 97.61
RYE02	97.50	2yr	(0.00) 97.29
		5yr	(0.00) 97.39
		100yr	(0.03) 97.53
		Static	(0.03) 97.53
RYE03	97.40	2yr	(0.00) 96.00
		5yr	(0.00) 96.32
		100yr	(0.04) 97.44
		Static	(0.15) 97.55
RYE04	96.90	2yr	(0.00) 95.55
		5yr	(0.00) 96.84
		100yr	(0.23) 97.13
		Static	(0.27) 97.17
RYE05	96.85	2yr	(0.00) 95.55
		5yr	(0.00) 95.49
		100yr	(0.15) 97.00
		Static	(0.30) 97.15
RYE06	97.46	2yr	(0.00) 95.78
		5yr	(0.00) 96.69
		100yr	(0.00) 97.15
		Static	(0.14) 97.60
RYE07	97.22	2yr	(0.00) 97.17
		5yr	(0.00) 95.14
		100yr	(0.00) 95.86
		Static	(0.15) 97.37
RYE08	97.20	2yr	(0.00) 96.44
		5yr	(0.00) 95.19
		100yr	(0.00) 97.08
		Static	(0.30) 97.50

BASED ON PCSWMM MODEL (3-HOUR CHICAGO STORM DISTRIBUTION)

PONDING¹

CB No.	RIM ELEV. (m)	EVENT	WATER LEVEL ELEV. (DEPTH) (m)
RYE09	97.37	2yr	(0.00) 95.19
		5yr	(0.00) 95.43
		100yr	(0.00) 97.03
		Static	(0.22) 97.59
RYE10	97.37	2yr	(0.00) 95.49
		5yr	(0.00) 95.80
		100yr	(0.01) 97.25
		Static	(0.13) 97.50
RYE11	97.14	2yr	(0.00) 96.38
		5yr	(0.00) 97.12
		100yr	(0.06) 97.20
		Static	(0.12) 97.26
RYE12	97.16	2yr	(0.11) 97.25
		5yr	(0.00) 95.81
		100yr	(0.03) 97.29
		Static	(0.15) 97.31
RYE13	97.31	2yr	(0.00) 95.96
		5yr	(0.00) 96.09
		100yr	(0.14) 97.45
		Static	(0.14) 97.45
RYE14	97.50	2yr	(0.00) 95.43
		5yr	(0.00) 96.28
		100yr	(0.15) 97.46
		Static	(0.14) 97.64
RYE15	97.38	2yr	(0.00) 96.86
		5yr	(0.03) 97.29
		100yr	(0.23) 97.61
		Static	(0.30) 97.68
RYE16	97.58	2yr	(0.00) 96.45
		5yr	(0.00) 97.42
		100yr	(0.09) 97.67
		Static	(0.11) 97.69
RYE17	97.66	2yr	(0.00) 97.70
		5yr	(0.00) 96.86
		100yr	(0.05) 97.71
		Static	(0.14) 97.80
RYE18	96.80	2yr	(0.00) 95.49
		5yr	(0.00) 96.53
		100yr	(0.20) 97.00
		Static	(0.20) 97.00
RYT01	97.35	2yr	(0.00) 96.33
		5yr	(0.06) 97.29
		100yr	(0.25) 97.61
		Static	(0.32) 97.67
RYT03	97.44	2yr	(0.00) 95.55
		5yr	(0.00) 95.99
		100yr	(0.00) 97.40
		Static	(0.21) 97.65
RYT04	97.26	2yr	(0.00) 97.44
		5yr	(0.00) 95.55
		100yr	(0.13) 97.39
		Static	(0.24) 97.50
RYT05	97.23	2yr	(0.00) 95.55
		5yr	(0.00) 95.99
		100yr	(0.16) 97.39
		Static	(0.15) 97.38
RYT06	97.18	2yr	(0.00) 95.77
		5yr	(0.00) 96.32
		100yr	(0.17) 97.35
		Static	(0.37) 97.55

BASED ON PCSWMM MODEL (3-HOUR CHICAGO STORM DISTRIBUTION)

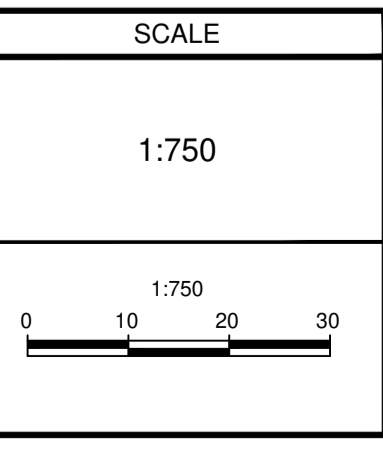
PONDING¹

CB No.	RIM ELEV. (m)	EVENT	WATER LEVEL ELEV. (DEPTH) (m)
RYT07	97.15	2yr	(0.00) 95.76
		5yr	(0.00) 96.32
		100yr	(0.15) 97.30
		Static	(0.20) 97.35
RYT08	96.90	2yr	(0.00) 95.84
		5yr	(0.00) 96.84
		100yr	(0.21) 97.11
		Static	(0.25) 97.15
RYT09	96.85	2yr	(0.00) 95.49
		5yr	(0.00) 96.53
		100yr	(0.15) 97.20
		Static	(0.25) 97.10
RYT10	97.47	2yr	(0.24) 97.14
		5yr	(0.00) 95.43
		100yr	(0.00) 97.03
		Static	(0.11) 97.58
RYT11	97.58	2yr	(0.00) 97.13
		5yr	(0.00) 95.43
		100yr	(0.00) 97.38
		Static	(0.11) 97.69
RYT12	97.07	2yr	(0.00) 96.37
		5yr	(0.04) 97.11
		100yr	(0.06) 97.13
		Static	(0.07) 97.14
RYT13	97.17	2yr	(0.00) 95.77
		5yr	(0.00) 96.06
		100yr	(0.13) 97.30
		Static	(0.13) 97.30
RYT14	97.29	2yr	(0.00) 95.85
		5yr	(0.00) 96.09
		100yr	(0.14) 97.43
		Static	(0.14) 97.43
RYT15	97.48	2yr	(0.00) 96.86
		5yr	(0.00) 96.28
		100yr	(0.12) 97.60
		Static	(0.11) 97.59
RYT16	97.64	2yr	(0.00) 96.86
		5yr	(0.00) 97.56
		100yr	(0.02) 97.66
		Static	(0.02) 97.66
RYT17	97.08	2yr	(0.03) 97.67
		5yr	(0.00) 95.15
		100yr	(0.00) 95.43
		Static	(0.25) 97.33

BASED ON PCSWMM MODEL (3-HOUR CHICAGO STORM DISTRIBUTION)

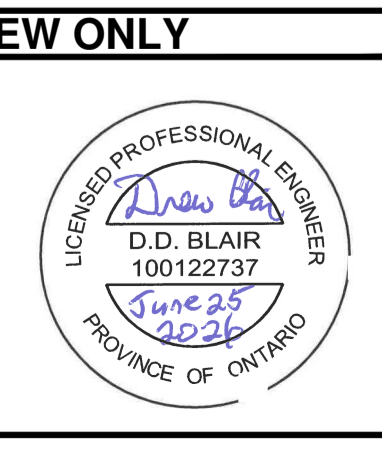
NOTE:
THE POSITION OF ALL POLE LINES, CONDUITS, WATERMANS, SEWERS AND OTHER UNDERGROUND AND OVERGROUND UTILITIES AND STRUCTURES IS NOT NECESSARILY SHOWN ON THE CONTRACT DRAWINGS, AND WHERE SHOWN, THE ACCURACY OF THE POSITION OF SUCH UTILITIES AND STRUCTURES IS NOT GUARANTEED. BEFORE STARTING WORK, DETERMINE THE EXACT LOCATION OF ALL SUCH UTILITIES AND STRUCTURES AND ASSUME ALL LIABILITY FOR DAMAGE TO THEM.

No.	REVISION	DATE	BY
7.	ISSUED FOR SITE PLAN APPROVAL	JUN 25/26	DDB
6.	REVISED PER CITY COMMENTS	MAR 18/26	DDB
5.	REVISED SITE PLAN SUBMISSION	NOV 14/25	DDB
4.	ISSUED FOR TENDER	MAY 16/22	DDB
3.	REVISED PER CITY COMMENTS	FEB 17/22	DDB
2.	REVISED PER CITY COMMENTS	NOV 5/21	DDB
1.	ISSUED FOR CITY OF OTTAWA REVIEW	JUN 2/21	DDB



DESIGN

CHECKED	BM
DRAWN	DDB
CHECKED	ATE
APPROVED	BM
	DDB



NOVATECH
Engineers, Planners & Landscape Architects
Suite 200, 240 Michael Cowpland Drive
Ottawa, Ontario, Canada K2M 1P6
Telephone: (613) 254-9643
Facsimile: (613) 254-5867
Website: www.novatech-eng.com

CITY OF OTTAWA
5331 FERNBANK ROAD
IRON VALLEY 2

DRAWING NAME
STORM DRAINAGE AREA PLAN

PROJECT No. 121011-00
REV # 1
DRAWING No. 121011-STM
#18539

M:\2021\121011\121011-STM.dwg, STM, Jun 22, 2026, 5:09pm, smathews

D07-12-25-015