



SITE

LIST OF DRAWINGS

- L1.0 NOTES AND SCHEDULES
- L1.1 LANDSCAPE PLAN
- L1.2 VALIDATING INFORMATION PLAN
- L2.0 DETAILS

CONSULTANTS

SITE PLAN
URBANTYPOLOGY
UNIT 10 - 163 STERLING ROAD
TORONTO, ON M6R 2B2

UNIT 101 - 45 SPENCER STREET
OTTAWA, ON K1Y 2P5

PLANNING
FOTENN
420 O'CONNOR STREET
OTTAWA, ON K2P 1W4

ARCHITECTURE
BIM STUDIO
636 KING ST W, 3RD FLOOR
TORONTO, ON M5V 1M7

KOHN
116 SPADINA AVENUE, SUITE 501
Toronto ON M5V 2K6

CIVIL ENGINEER
STANTEC
300-1331 CLYDE AVENUE
OTTAWA, ON K2C 3G4

TRANSPORTATION
CGH TRANSPORTATION
6 PLAZA COURT
OTTAWA, ON K2H 7W1

**MATTAMY HOMES
NORTHWOODS - PHASE 6**

Urbantypology

UNIT 10-163 STERLING ROAD
TORONTO, ON, CANADA, M6R 2B2
PH: 437.700.5446

UNIT 101-45 SPENCER STREET
OTTAWA, ON, CANADA, K1Y 2P5
C: 613.867.3042 / P: 343.882.4918

PROPERTY INFORMATION:

PLAN OF SURVEY	BLOCK 140 REGISTERED PLAN 4M-1544
CITY OF OTTAWA	CITY OF OTTAWA
SURVEYOR	ANNIS, OSULLIVAN, VOLLEBEKK LTD.

PROPOSED SITE PERMEABLE SURFACES:

SITE AREA (m ²)	10890.9
PERMEABLE AREA (m ²)	2793.3
PERCENTAGE PERMEABLE AREA (%)	25.6%

ESTIMATED 40 YEAR CANOPY PROJECTION:

SITE AREA (m ²)	10890.9
CANOPY AREA WITHOUT OVERLAPS (m ²)	1923.1
CANOPY AREA PERCENTAGE (%)	17.7%

GENERAL NOTES:

- LANDSCAPE ARCHITECT AND/OR LANDSCAPE CONSULTANT HEREIN REFERS TO URBANTYPOLOGY INC.
- ALL PLANS IN METRIC UNLESS OTHERWISE NOTED.
- CONTRACTOR TO PROTECT ALL EXISTING ROADS, RIGHT OF WAYS, SIDEWALKS, CURBS, AND OTHER SITE ELEMENTS DURING CONSTRUCTION. AREAS DAMAGED DURING CONSTRUCTION TO BE REINSTATED AT CONTRACTORS OWN EXPENSE.
- CONTRACTOR IS RESPONSIBLE FOR VERIFYING LOCATION OF ALL SERVICES PRIOR TO ANY EXCAVATION. SHOULD CONFLICTS WITH SERVICES BE FOUND, CONTRACTOR TO NOTIFY LANDSCAPE CONSULTANT IMMEDIATELY. DAMAGE TO ANY SERVICES, BOTH ON AND OFF PROJECT SITE, TO BE REPAIRED AT CONTRACTORS OWN COST.
- ALL PLANT MATERIAL TO HAVE A 2 YEAR WARRANTY, FROM THE DATE OF SUBSTANTIAL COMPLETION.
- ALL PLANT MATERIAL SHALL BE NURSERY STOCK GROWN IN SAME HARDINESS ZONE AS PROJECT SITE.
- DECIDUOUS TREES TO HAVE MIN. 1800mm CLEAR STEM ABOVE GRADE.
- PROPOSED PLANT SUBSTITUTION REQUESTS ARE REQUIRED TO BE SUBMITTED TO THE LANDSCAPE CONSULTANT FOR REVIEW PRIOR TO SOURCING. PROPOSED SUBSTITUTIONS TO DEMONSTRATE EQUIVALENT CHARACTERISTICS.
- THE LOCATION OF THE TREES SHOWN ON THIS PLAN IS APPROXIMATE AND SHALL NOT BE SCALED FROM THIS DRAWING. THIS PLAN MUST BE READ IN CONJUNCTION WITH THE ENGINEERING DRAWINGS.
- THE CITY WILL BE NOTIFIED IF ANY TREES CANNOT BE LOCATED OR PLANTED DUE TO CONFLICTS WITH UTILITIES OR DRIVEWAYS.
- PRIVACY, POST RAIL, AND CHAIN LINK FENCES ARE TO BE LOCATED 150MM ON PRIVATE PROPERTY UNLESS OTHERWISE SPECIFIED.

REMOVALS AND PROTECTION NOTES:

- CONTRACTOR TO USE HYDROVAC AND HAND PRUNING TO ENSURE SUITABLE CONDITIONS FOR ROOT PRUNING.
- ROOTS OR BRANCHES THAT EXTEND BEYOND PRESCRIBED TREE PROTECTION ZONE SHOULD BE PRUNED BY A QUALIFIED ARBORIST (ISA CERTIFIED OR EQUIVALENT) OR OTHER TREE PROFESSIONAL AS APPROVED BY THE CITY OF OTTAWA. ALL PRUNING OF TREE ROOTS AND BRANCHES MUST BE IN ACCORDANCE WITH GOOD ARBORICULTURAL STANDARDS.
- TREES SHALL BE INSPECTED BY THE LANDSCAPE CONSULTANT OR CITY FORESTER REGULARLY FOR DAMAGE INCURRED DURING CONSTRUCTION TO ENSURE APPROPRIATE PRUNING OR OTHER MEASURES ARE IMPLEMENTED.
- TREES THAT HAVE DIED OR HAVE BEEN DAMAGED BEYOND REPAIR WILL BE REMOVED AND REPLACED WITH TREES OF AN EQUIVALENT SIZE AND SPECIES AS APPROVED BY THE LANDSCAPE ARCHITECT OR CITY OF OTTAWA.
- ALL DISTURBED AREAS TO BE RESTORED TO FINISHED CONDITION WITH 150MM TOPSOIL AND SOD OR SEED AS INDICATED.
- ALL NECESSARY CLEARING AND GRUBBING SHALL BE COMPLETED BY THE CONTRACTOR. REVIEW REMOVAL WITH LANDSCAPE ARCHITECT AND THE CITY OF OTTAWA PRIOR TO ANY TREE CUTTING.
- IF CUTTING OF ROOTS OR CHANGING OF GRADES AROUND EXISTING TREES IS SPECIFIED, FOLLOW APPROPRIATE DETAILS AS DIRECTED BY LANDSCAPE ARCHITECT.
- INSTALL TREE PROTECTION FENCE TO SATISFACTION OF THE LANDSCAPE CONSULTANT. TREE PROTECTION SHALL REMAIN UNTIL SUBSTANTIAL PERFORMANCE OF THE PROJECT OR UPON WRITTEN AUTHORIZATION FROM THE LANDSCAPE CONSULTANT.

MINIMUM TREE PLANTING SETBACKS

CITY OF OTTAWA STANDARD ROW CROSS SECTIONS SHALL TAKE PRECEDENCE, WHERE NOT OTHERWISE DEFINED BY CODES OR BYLAWS, MINIMUM SETBACKS ARE AS FOLLOWS:	
STREET LIGHTS (LARGE TREES)	4.5m
STREET LIGHTS (SMALL TREES)	2.5m
HYDRO TRANSFORMERS	3.0m
PUBLIC STREETS	2.5m
SIDEWALKS, DRIVEWAYS, FENCES, NOISE BARRIERS	1.5m
FOR CONIFERS FROM PAVED SURFACES	4.5m
FIRE HYDRANTS	2.5m
UNDERGROUND SERVICES & UTILITIES	1.5m
TELECOM / CABLE PEDESTALS	1.0m

SUMMARY OF PRESENT SOILS:

NOT MARINE CLAY	YES
LOW TO MEDIUM SENSITIVITY SILTY CLAY	NO
HIGH SENSITIVITY SILTY CLAY	NO

TREE PLANTING IN MARINE CLAY SOILS:

THE LANDSCAPE ARCHITECT INTENDS, BELIEVES AND HAS MADE REASONABLE EFFORT TO CONFORM WITH THE TREE-TO-FOUNDATION SETBACKS, SOIL VOLUMES, AND SURFACE-GRADING REQUIREMENTS OUTLINED IN:

- THE CITY OF OTTAWA'S GUIDELINES FOR TREE PLANTING IN SENSITIVE MARINE CLAY SOILS (2017).

SOIL VOLUME TARGETS:

TREE SIZE	SOIL VOLUMES TARGETS	GRAPHIC
SMALL	(A) 20m ³ SINGLE TREE (B) 9m ³ MULTIPLE GROUPED TREES (C) 25m ³ IN SENSITIVE MARINE CLAY	
MEDIUM	(D) 25m ³ SINGLE TREE (E) 15m ³ MULTIPLE GROUPED TREES (F) 30m ³ IN SENSITIVE MARINE CLAY	
LARGE	(G) 30m ³ SINGLE TREE (H) 18m ³ MULTIPLE GROUPED TREES	
CONIFER	(D) 25m ³ SINGLE TREE (E) 15m ³ MULTIPLE GROUPED TREES	

SOIL VOLUMES TARGETS ARE PROJECTED AT:
1.0m DEPTH IN NON-MARINE CLAY SOILS, AND
1.5m DEPTH IN SENSITIVE MARINE CLAY SOILS

ESTIMATED 40 YR. CANOPY PROJECTIONS:

TREE SIZE	AVERAGED TREE CANOPY AREA (m ²) -USED FOR VALIDATION INFO.	GRAPHIC
SMALL	20.0m ² CANOPY / TREE	
MEDIUM	38.0m ² CANOPY / TREE	
LARGE	64.0m ² CANOPY / TREE	
CONIFER	20.0m ² CANOPY / TREE	

TREE CANOPY AREA USED FOR VALIDATION PURPOSES ARE PER: "CITY OF OAKVILLE, DEVELOPMENT APPLICATION GUIDELINES, 2057 CANOPY COVER PLAN AND CANOPY CALCULATION CHART, (FEB 2025)

TREE CONSERVATION REPORT:

TREE NO.	BOTANICAL NAME	COMMON NAME	DBH (cm)	OWNERSHIP	CONDITION	COMMENTS	ARBORIST RECOMMENDATION	REMOVAL REASON
NO TREES CURRENTLY ON SITE. TREE CONSERVATION REPORT NOT REQUIRED.								

SOIL VOLUME AND CANOPY COVER BY PLAN REGION:

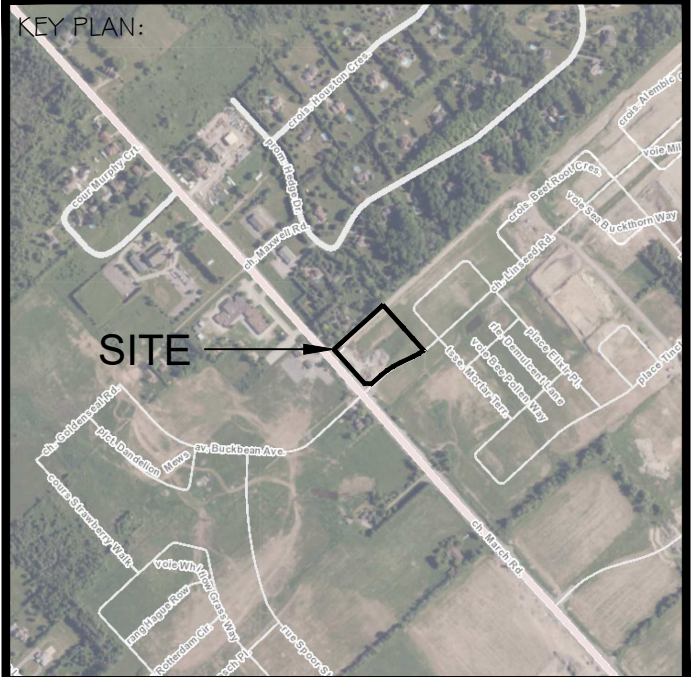
AREA NO.	TREE QUANTITIES	PROVIDED SOIL AREA (m ²)	PROVIDED SOIL VOLUME (m ³)	OTTAWA TARGET SOIL VOLUME FOR LISTED TREES (m ³)	PERCENTAGE SOIL VOLUME PROVIDED VS TARGET	ESTIMATED 40YR. CANOPY PROJECTION
EX.	SUM OF TREES SIZES	VALUE A	VALUE B = VALUE A X SOIL DEPTH	VALUE C	VALUE B / VALUE C X 100%	SUM OF CANOPY AREAS - OVERLAPS
1	6 SMALL 1 MEDIUM	418.2	418.2	69	606.1%	158.0
2	8 LARGE 12 CONIFER	587.4	587.4	324	181.3%	727.5
3	2 LARGE	43.8	43.8	36	121.7%	116.5
4	2 LARGE	43.8	43.8	36	121.7%	115.2
5	2 LARGE	43.8	43.8	36	121.7%	115.2
6	1 LARGE	59.8	59.8	30	199.3%	64.0
7	1 LARGE	37.7	37.7	30	125.7%	64.0
8	2 CONIFER	162.4	162.4	30	541.3%	37.2
9	1 LARGE	40.6	40.6	30	135.3%	64.0
10	6 LARGE 1 CONIFER	386.1	386.1	123	313.9%	308.8
11	1 SMALL	40.2	40.2	20	201.0%	20
12	1 SMALL	30.5	30.5	20	152.5%	20
13	1 SMALL	29	29.0	20	145.0%	20
14	2 SMALL	40.4	40.4	18	224.4%	38.4
15	3 SMALL	67.4	67.4	27	249.6%	54.3
TOTAL	53 TREES	2031.1	2031.1	849.0	239.2%	1923.1

TREE LIST

SYM	BOTANICAL NAME	COMMON NAME	QTY.	PLANTING SIZE	INSTALL NOTES	COMMENTS
LARGE DECIDUOUS TREES (ABOVE 1.5m HEIGHT)						
AS	ACER SACCHARUM	SUGAR MAPLE	3	70mm CAL		PRIVATE OWNERSHIP, NATIVE SPECIES
CC	CARYA CORDIFORMIS	BITTERNUT HICKORY	4	70mm CAL		PRIVATE OWNERSHIP, NATIVE SPECIES
GB	GINKGO BILOBA	GINKGO TREE	8	70mm CAL		PRIVATE OWNERSHIP
QR	QUERCUS RUBRA	RED OAK	4	70mm CAL		PRIVATE OWNERSHIP, NATIVE SPECIES
UA	ULMUS AMERICANA	AMERICAN ELM	3	70mm CAL		PRIVATE OWNERSHIP, NATIVE SPECIES
MEDIUM DECIDUOUS TREES (8 TO 1.5m HEIGHT)						
CO	CELTIS OCCIDENTALIS	HACKBERRY	2	50mm CAL.	B4B / W.B.	PUBLIC (1) OWNERSHIP, NATIVE SPECIES
SMALL DECIDUOUS TREES (5 TO 8m HEIGHT)						
AC	AMELANCHIER CANADENSIS	SHADBLOW SERVICEBERRY	3	50mm CAL.	B4B / W.B.	PUBLIC OWNERSHIP (2), NATIVE SPECIES
MB	MALUS BACCATA 'COLUMNARIS'	COLUMNAR SIBERIAN CRABAPPLE	5	50mm CAL.	B4B / W.B.	PRIVATE OWNERSHIP
MP	MALUS PRAIRIE FIRE	PRAIRIE FIRE CRABAPPLE	3	50mm CAL.	B4B / W.B.	PUBLIC OWNERSHIP
SR	SYRINGA RETICULATA	JAPANESE LILAC	3	50mm CAL.	B4B / W.B.	PUBLIC OWNERSHIP
CONIFEROUS TREES						
PP	PICEA PUNGENS	COLORADO SPRUCE	1	1800mm HT.	B4B / W.B.	PRIVATE OWNERSHIP
PG	PICEA GLAUCA	WHITE SPRUCE	4	1800mm HT	B4B / W.B.	PRIVATE OWNERSHIP, NATIVE SPECIES

SHRUBS, PERENNIALS, GRASSES

KEY	QUANTITY	BOTANICAL NAME	COMMON NAME	SIZE	HEIGHT	SPREAD	SPACING
JH	219	JUNIPERUS HORIZONTALIS 'PLUMOSA COMPACTA'	COMPACT ANDORRA JUNIPER	3 GAL.	40	150	150cm
PO	159	PHYSOCARPUS OPULIFOLIUS 'LITTLE DEVIL'	LITTLE DEVIL NINEBARK	3 GAL.	100	100	75cm
PC	68	PHYSOCARPUS OPULIFOLIUS 'COPPERTINA'	COPPERTINA NINEBARK	2 GAL.	100	100	75cm
SJ	23	SPIRAEA ALBA	MEADOWSWEET	2 GAL.	125	125	100cm
WF	22	WEIGELA FLORIDA 'LITTLE PRINCE'	LITTLE PRINCE WEIGELA	2 GAL.	30	100	105cm
RA	31	RIBES ALPINUM	ALPINE CURRANT	2 GAL.	125	150	130cm
SP	20	SYMPHORICARPOS 'PINKY PROMISE'	PINKY PROMISE SNOWBERRY	2 GAL.	70	70	60cm
CK	16	CORNUS SERICEA 'KELSEY'	KELSEY DOGWOOD	2 GAL.	175	200	180cm
VA	22	VIBURNUM ACERFOLIUM	MAPLELEAF VIBURNUM	3 GAL.	150	100	80cm
RO	19	RUBUS ODORATUS	FLOWERING RASPBERRY	2 GAL.	150	150	130cm
DL	20	DIERVILLA LONICERA	BUSH HONEYSUCKLE	3 GAL.	90	100	90cm
CA	416	CALAMAGROSTIS ACUTIFLORA 'KARL FOERSTER'	KARL FOERSTER FEATHER REED GRASS	3 GAL.	100	60	55cm
SS	135	SCHIZACHYRIUM SCOPARIUM	LITTLE BLUESTEM	2 GAL.	100	50	55cm



Urbantypology
 UNIT 10-163 STERLING ROAD, TORONTO, ON CANADA, M6R 2B2
 PH: 437-700-5446
 UNIT 101-45 SPENCER STREET, OTTAWA, ON CANADA, K1Y 2P5
 C: 613-867-3042 / P: 343-882-4998

05	REISSUED FOR SPA	2026-05-22
04	REISSUED FOR SPA	2026-05-13
03	REISSUED FOR SPA	2026-03-17
02	REISSUED FOR SPA	2025-12-18
01	ISSUED FOR SPA	2025-11-10

NO.: REVISION: DATE:
 ALL MEASUREMENTS ARE IN MILLIMETERS UNLESS SPECIFIED OTHERWISE. DO NOT SCALE THE DRAWINGS. ALL DRAWINGS TO BE READ IN CONJUNCTION WITH CONTRACT SPECIFICATIONS.
 COPYRIGHT RESERVED. THIS DRAWING IS THE EXCLUSIVE PROPERTY OF URBANTYPOLOGY INC. AND SHALL NOT BE REPRODUCED OR USED FOR PURPOSES OTHER THAN INTENDED BY THE OWNER, WITHOUT PERMISSION.
 THIS DRAWING SHALL ONLY BE USED FOR CONSTRUCTION WHEN FIXED WITH A PROFESSIONAL SEAL AND SIGNATURE BY THE LANDSCAPE ARCHITECT. IT IS THE RESPONSIBILITY OF THE CONTRACTOR TO:
 • REPORT ALL DIMENSIONS AND CONDITIONS ON SITE.
 • REPORT ALL ERRORS AND/OR OMISSIONS TO THE CONTRACT ADMINISTRATOR.
 • COMPLY WITH ALL PERTINENT CODES, BYLAWS AND LAWS.
 • VERIFY LOCATION OF ALL UNDERGROUND SERVICES AND UTILITIES WITH RESPECTIVE AUTHORITIES PRIOR TO COMMENCEMENT OF WORK.

PROJECT:
NORTHWOODS PHASE 6
 LOCATION:
1020 & 1070 MARCH RD OTTAWA, ON

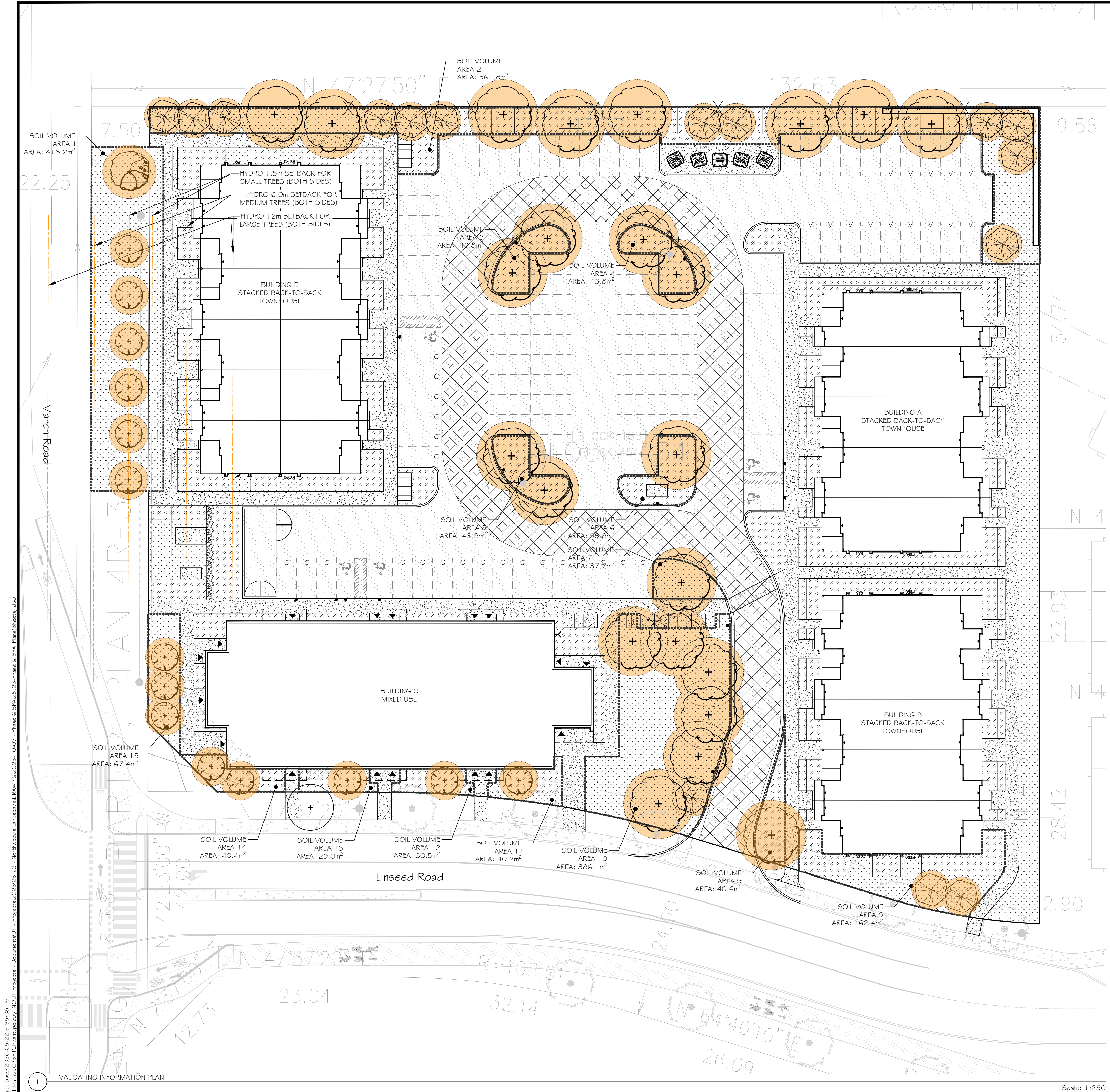
DRAWN: SG START DATE:
 CHECKED: LM OCT 2025

DRAWING:
NOTES AND SCHEDULES

SCALE: NA PAGE SIZE: 24X36
 PROJECT NUMBER: 24.23

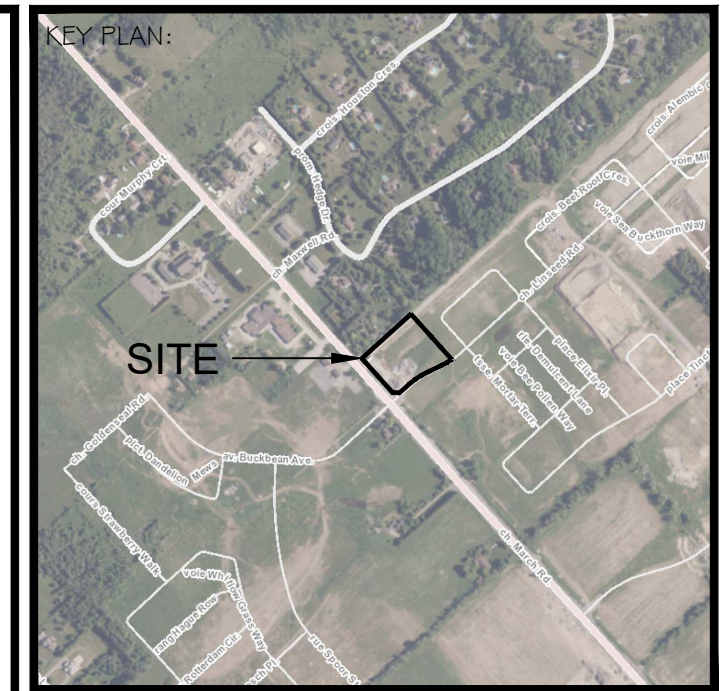
NORTH: SHEET NO.:

L1.0



LEGEND:

- SITE BOUNDARY
- SOIL VOLUME AREAS
- OVERHEAD UTILITY SETBACKS
- CANOPY AREAS NO OVERLAP
- LARGE DECIDUOUS TREE WITH 40YR CANOPY OFFSET
- MEDIUM DECIDUOUS TREE WITH 40YR CANOPY OFFSET
- SMALL DECIDUOUS TREE WITH 40YR CANOPY OFFSET
- CONIFEROUS TREE WITH 40YR CANOPY OFFSET



Association of Landscape Architects Ontario (ALAO)
Urbantypology
 UNIT 10: 163 STERLING ROAD, TORONTO, ON CANADA, M6R 2B2
 UNIT 101: 45 SPENCER STREET, OTTAWA, ON CANADA, K1P 2P5
 PH: 437.700.5446 C: 613.867.3042 / P: 343.882.4998

NO.	REVISION:	DATE:
05	REISSUED FOR SPA	2026-05-22
04	REISSUED FOR SPA	2026-05-13
03	REISSUED FOR SPA	2026-03-17
02	REISSUED FOR SPA	2025-12-18
01	ISSUED FOR SPA	2025-11-10

ALL MEASUREMENTS ARE IN MILLIMETERS UNLESS SPECIFIED OTHERWISE. DO NOT SCALE THE DRAWINGS. ALL DRAWINGS TO BE READ IN CONJUNCTION WITH CONTRACT SPECIFICATIONS.
 COPYRIGHT RESERVED. THIS DRAWING IS THE EXCLUSIVE PROPERTY OF URBANTYPOLOGY INC. AND SHALL NOT BE REPRODUCED OR USED FOR PURPOSES OTHER THAN INTENDED BY THE OWNER, WITHOUT PERMISSION.
 THIS DRAWING SHALL ONLY BE USED FOR CONSTRUCTION WHEN FIXED WITH A PROFESSIONAL SEAL AND SIGNATURE BY THE LANDSCAPE ARCHITECT. IT IS THE RESPONSIBILITY OF THE CONTRACTOR TO:
 • REPORT ALL DIMENSIONS AND CONDITIONS ON SITE.
 • REPORT ALL ERRORS AND/OR OMISSIONS TO THE CONTRACT ADMINISTRATOR.
 • COMPLY WITH ALL PERTINENT CODES, BYLAWS AND LAWS.
 • VERIFY LOCATION OF ALL UNDERGROUND SERVICES AND UTILITIES WITH RESPECTIVE AUTHORITIES PRIOR TO COMMENCEMENT OF WORK.

PROJECT:
NORTHWOODS PHASE 6
 LOCATION:
 1020 & 1070 MARCH RD
 OTTAWA, ON

DRAWN: SG START DATE:
 CHECKED: LM OCT 2025

VALIDATING INFORMATION PLAN

SCALE: 1:250 PAGE SIZE: 24x36
 PROJECT NUMBER: 25.23

NORTH: SHEET NO.:

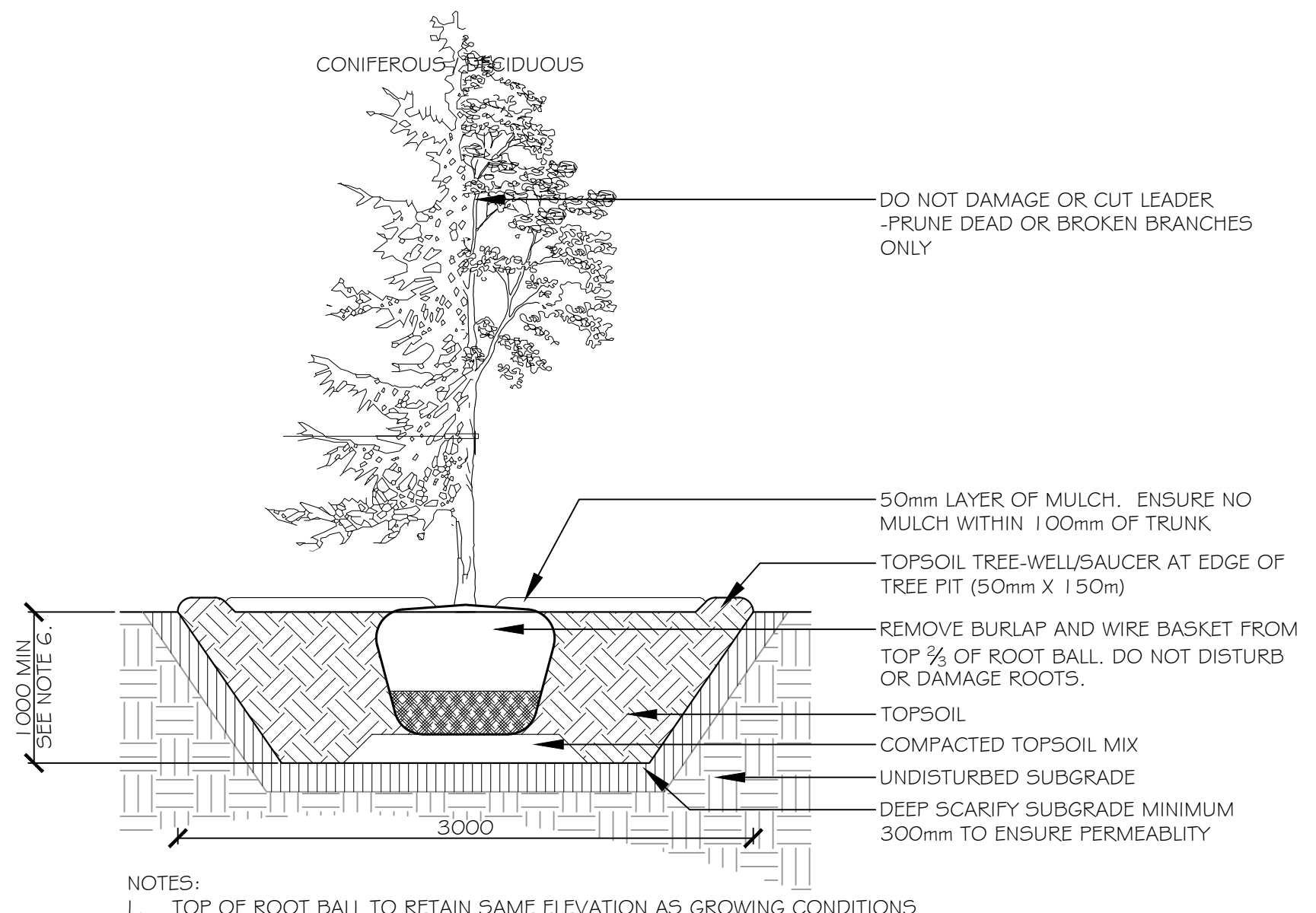
L1.2

Last Save: 2026-05-22 3:35:09 PM
 File Location: C:\BP\Urbantypology\ICDUT\Projects - Documents\U1 - Northwoods Landscape\DWG\N1025-25 - 017 - Phase 6 SPA\25-23-Phase 6 SPA - Plan\Sheet\Draw

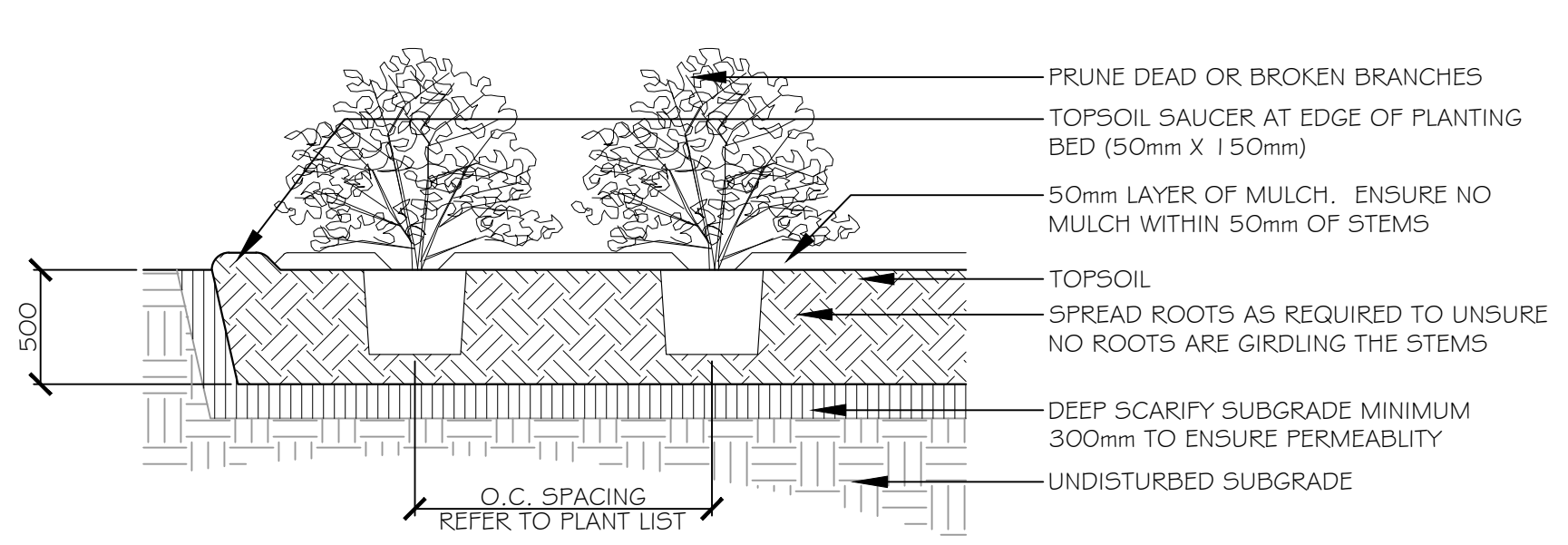
VALIDATING INFORMATION PLAN

Scale: 1:250

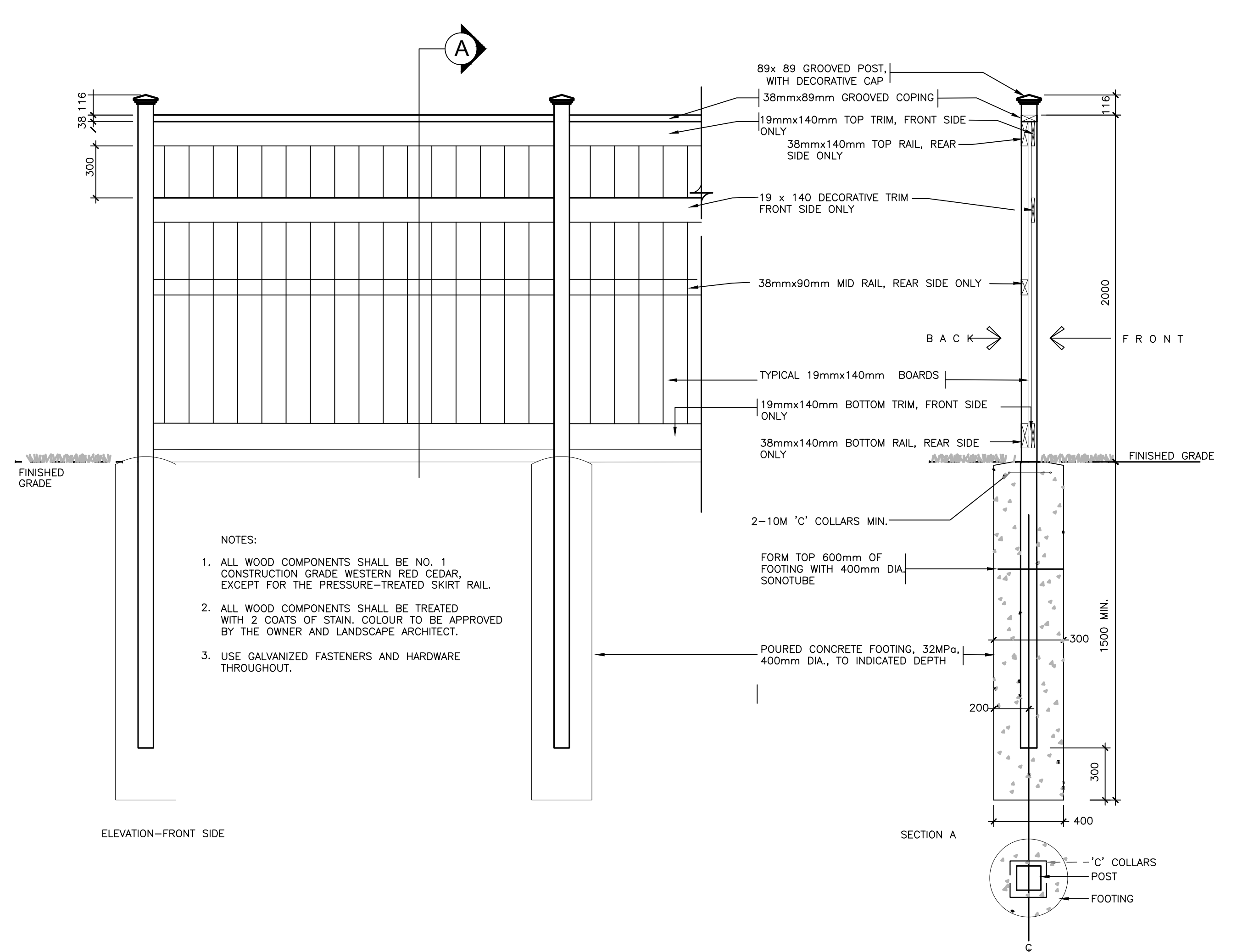
D07-12-25-0148, PLAN #19393



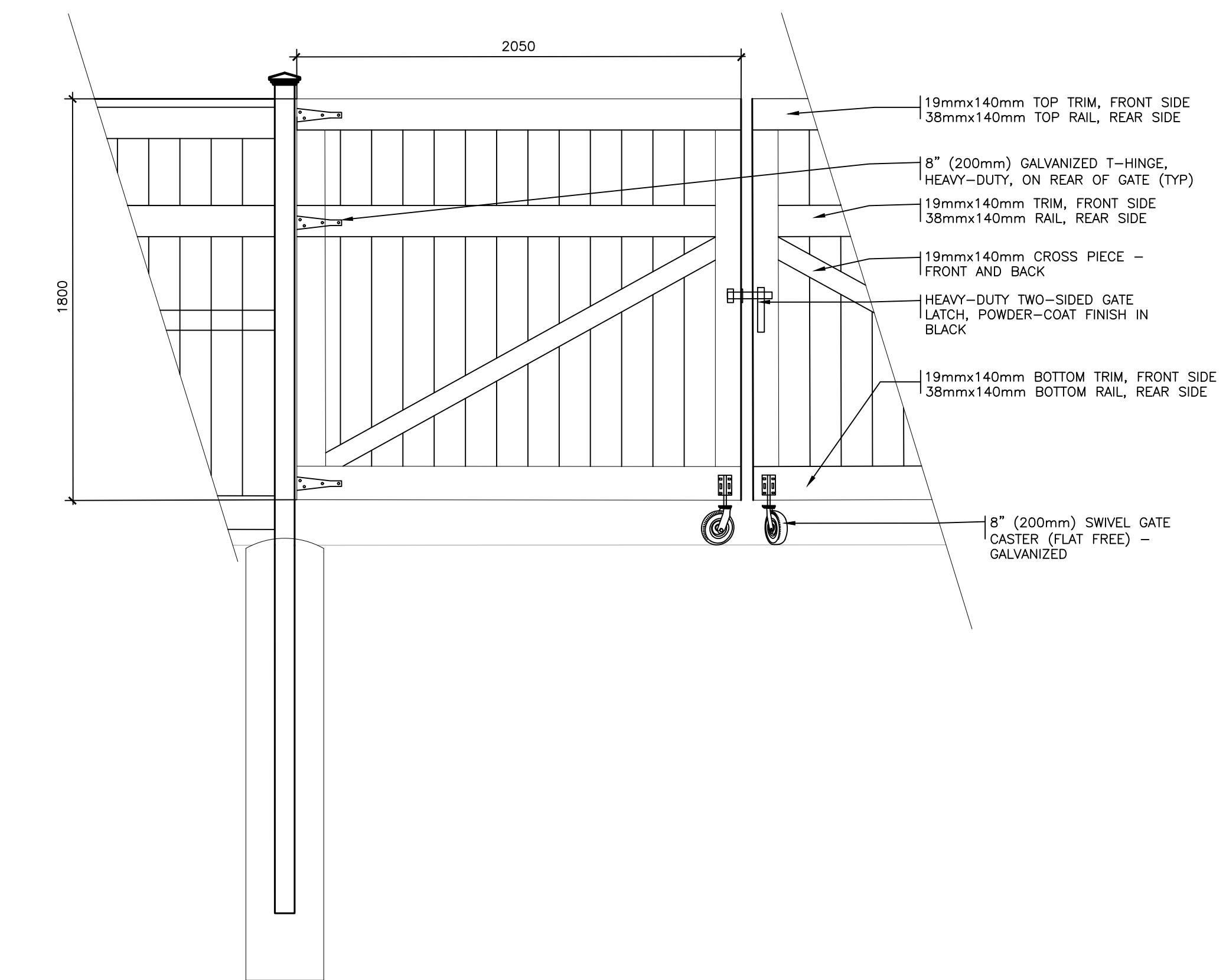
1 TREE PLANTING (TYP) Scale: 1:30



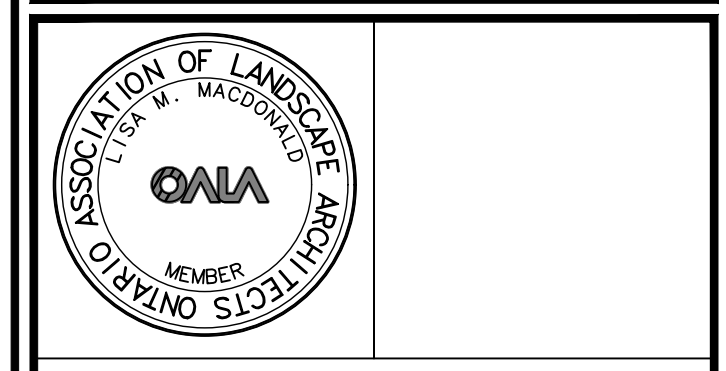
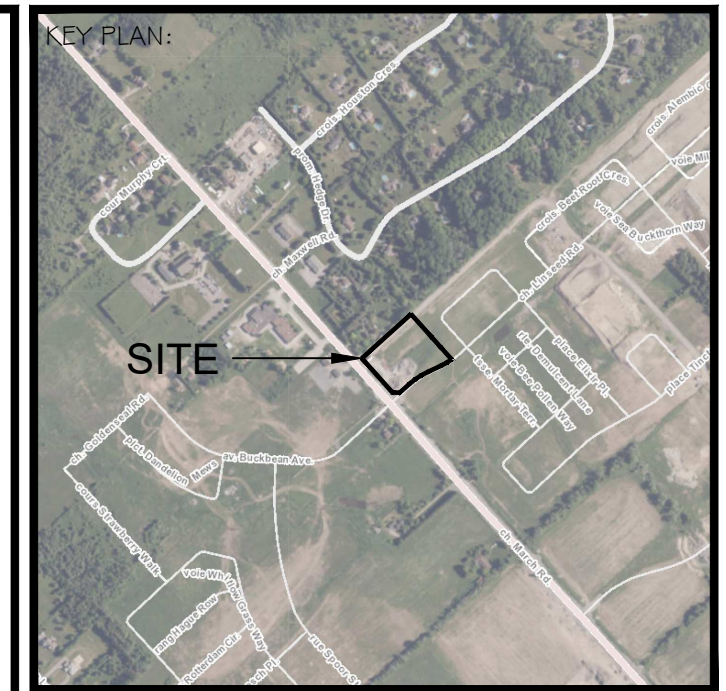
2 SHRUB PLANTING TYP Scale: 1:30



3 WOOD SCREEN FENCE Scale: 1:20



4 WOOD SCREEN GATE Scale: 1:20



Urbantypology
 UNIT 10-163 STERLING ROAD TORONTO, ON CANADA, M6R 2B2 PH: 437.700.5446
 UNIT 101-45 SPENCER STREET OTTAWA, ON CANADA, K1Y 2P5 C: 613.867.3042 / P: 343.882.4998

NO.	REVISION	DATE
05	REISSUED FOR SPA	2026-05-22
04	REISSUED FOR SPA	2026-05-13
03	REISSUED FOR SPA	2026-03-17
02	REISSUED FOR SPA	2025-12-18
01	ISSUED FOR SPA	2025-11-10

ALL MEASUREMENTS ARE IN MILLIMETERS UNLESS SPECIFIED OTHERWISE. DO NOT SCALE THE DRAWINGS. ALL DRAWINGS TO BE READ IN CONJUNCTION WITH CONTRACT SPECIFICATIONS.

COPYRIGHT RESERVED. THIS DRAWING IS THE EXCLUSIVE PROPERTY OF URBANTYPOLOGY INC. AND SHALL NOT BE REPRODUCED OR USED FOR PURPOSES OTHER THAN INTENDED BY THE OWNER, WITHOUT PERMISSION.

THIS DRAWING SHALL ONLY BE USED FOR CONSTRUCTION WHEN FIXED WITH A PROFESSIONAL SEAL AND SIGNATURE BY THE LANDSCAPE ARCHITECT. IT IS THE RESPONSIBILITY OF THE CONTRACTOR TO:

- VERIFY ALL DIMENSIONS AND CONDITIONS ON SITE.
- REPORT ALL ERRORS AND/OR OMISSIONS TO THE CONTRACT ADMINISTRATOR.
- COMPLY WITH ALL PERTINENT CODES, BYLAWS AND LAWS.
- VERIFY LOCATION OF ALL UNDERGROUND SERVICES AND UTILITIES WITH RESPECTIVE AUTHORITIES PRIOR TO COMMENCEMENT OF WORK.

PROJECT:
NORTHWOODS PHASE 6

LOCATION:
1020 & 1070 MARCH RD
OTTAWA, ON

DRAWN: SG START DATE:
CHECKED: LM OCT 2025

DRAWING:
LANDSCAPE DETAILS

SCALE: - PAGE SIZE: 24x36
PROJECT NUMBER: 25.23

NORTH: SHEET NO.:

L2.0