

**TOPOGRAPHICAL PLAN OF
PART OF LOT 29
CONCESSION A (RIDEAU FRONT)
Geographic Township of Nepean
CITY OF OTTAWA**

Prepared by Annis, O'Sullivan, Vollebek Ltd.
Field Work Completed July 15, 2009

Scale 1 : 300



Metric
DISTANCES SHOWN ON THIS PLAN ARE IN METRES AND
CAN BE CONVERTED TO FEET BY DIVIDING BY 0.3048

Date: July 24, 2009
V. Andrew Shep, O.L.S.

Notes & Legend

○	Denotes	Deciduous Tree	CLF	Denotes	Chain Link Fence
○		Coniferous Tree	○ UP		Utility Pole
○		Fire Hydrant	○ AN		Anchor
○		Water Valve	○ LS		Light Standard
○		Fire Hydrant Valve	○		Diameter
○		Maintenance Hole (Storm Sewer)	+ 65.00		Location of Elevations
○		Maintenance Hole (Sanitary)	+ 65.00		Top of Concrete Curb Elevation
○		Maintenance Hole (Bell Telephone)	T/G		Top of Grate
○		Maintenance Hole (Traffic)	C/L		Control Line
○		Maintenance Hole (Unidentified)	TFCC		Top Face Concrete Curb Noted
○		Valve Chamber (Watermain)	ST		Underground Storm Sewer
○		Catch Basin	S		Underground Sanitary Sewer
○		Ditch Inlet	W		Underground Water
○		Traffic Terminal Box	P		Underground Power
○		Traffic Signal Post	OW		Overhead Wires
△		Sign			Property Line

SITE AREA = 1.535 Hectares

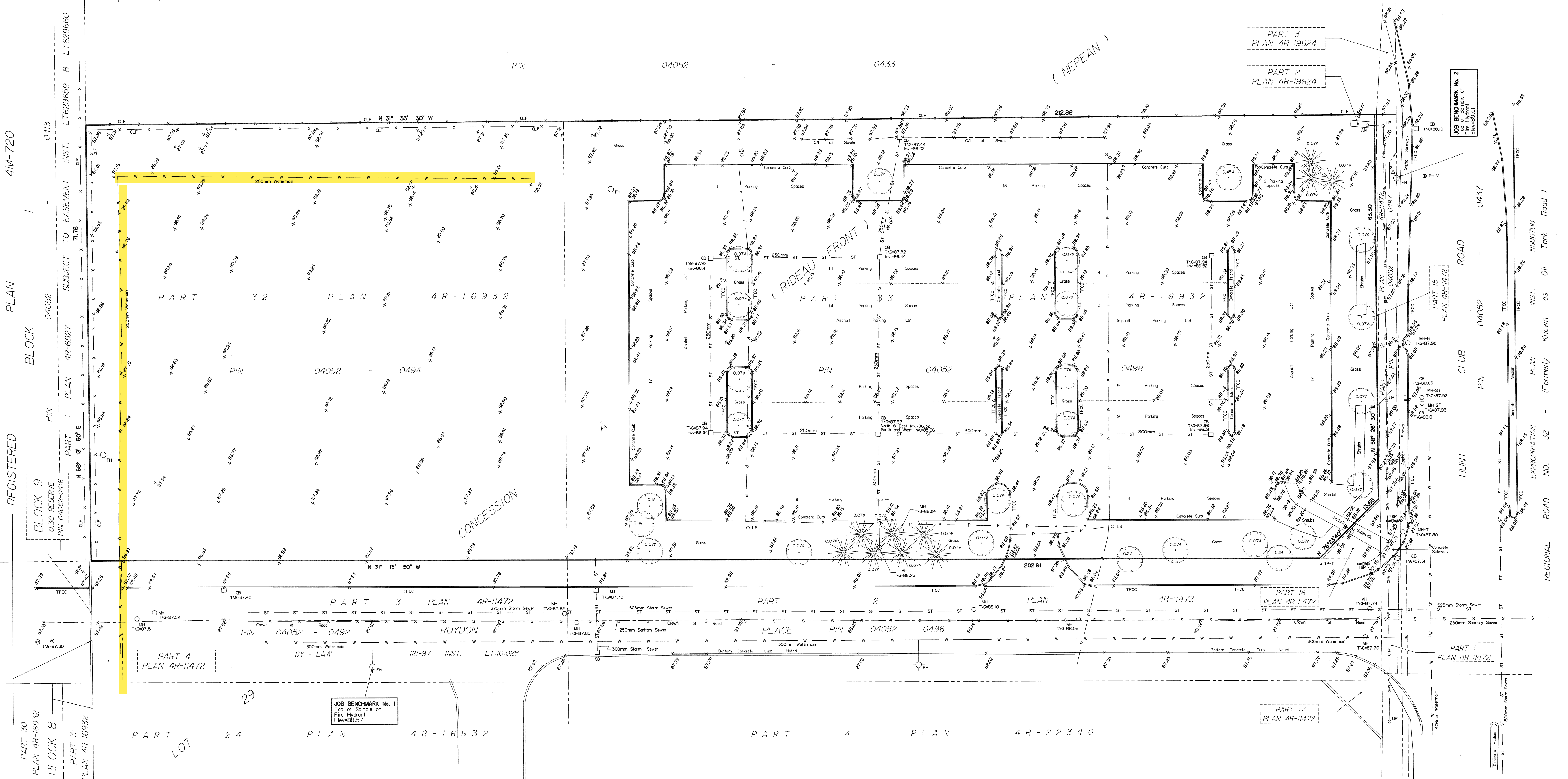
BOUNDARY INFORMATION COMPILED FROM PLAN 4R-16932.

ELEVATION NOTES

- Elevations shown are referred to geodetic datum.
- It is the responsibility of the user of this information to verify that the job benchmark has not been altered or disturbed and that it's relative elevation and description agrees with the information shown on this drawing.

UTILITY NOTES

- This drawing cannot be accepted as acknowledging all of the utilities and it will be the responsibility of the user to contact the respective utility authorities for confirmation.
- Underground services shown on this plan were located by Underground Service Locators Inc. Sewer information on Roydon Place compiled from site servicing plans by Oliver, Mangioni, McCalla & Ass. Ltd., No. 92-8556-SS1 January 23, 1996, No. 92-8556-1 December 12, 1996 & No. 97-11110-SG1 August 22, 1997.
- A field location of underground plant by the pertinent utility authority is mandatory before any work involving breaking ground, probing, excavating etc.



Y:\2009\045\045-09-Topo\Plan 11-11-2009-4-R-16932.dwg