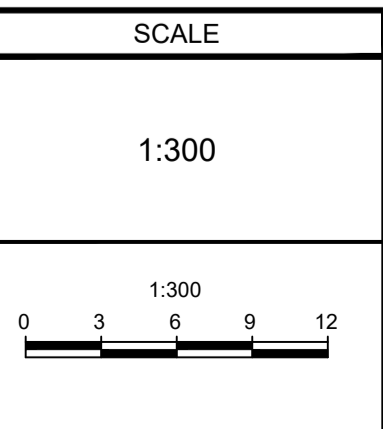


- CONSTRUCTION MANAGEMENT PLAN NOTES:**
- PROMENADE DECOEUR DRIVE IS A TWO WAY STREET COMPLETE WITH A LEFT TURN LANE EAST BOUND TOWARDS TENTH LINE. BUILDING SERVICES CONSTRUCTION WORK TO BE CONDUCTED IN TWO STAGES (STAGE 1 AND STAGES 2). BOTH STAGES WILL REQUIRE SECTIONS OF LANES BEING RESTRICTED DURING CONSTRUCTION.
 - STAGE 1 AND STAGE 2 CONSISTS OF RESTRICTING THE TRAFFIC IN FRONT OF THE DEVELOPMENT, CLOSING THE EASTBOUND THROUGH LANE AND LEFT TURN LANE, AND WESTBOUND LANE RESPECTIVELY. DURING THESE STAGES THE DEVELOPMENTS WATER SERVICES WILL BE INSTALLED. REFER TO 125079-CMP2 FOR STAGE 2.
 - PORTIONS OF PROMENADE DECOEUR DRIVE NORTHREN CONCRETE SIDEWALK IS TO BE CLOSED AND FOOT TRAFFIC TO BE REDIRECTED TO SOUTHERN SIDEWALK.
 - REFER TO 125075-CMP3 FOR TEMPORARY ROAD CLOSURE DETAILS.
 - A DETAILED CONSTRUCTION MANAGEMENT PLAN TO BE PREPARED AND PROVIDED BY THE CONTRACTOR, ONCE ONE IS RETAINED.

NOTE:
THE POSITION OF ALL POLE LINES, CONDUITS, WATERMANS, SEWERS AND OTHER UNDERGROUND AND OVERGROUND UTILITIES AND STRUCTURES IS NOT NECESSARILY SHOWN ON THE CONTRACT DRAWINGS, AND WHERE SHOWN, THE ACCURACY OF THE POSITION OF SUCH UTILITIES AND STRUCTURES IS NOT GUARANTEED. BEFORE STARTING WORK, DETERMINE THE EXACT LOCATION OF ALL SUCH UTILITIES AND STRUCTURES AND ASSUME ALL LIABILITY FOR DAMAGE TO THEM.

NOT FOR CONSTRUCTION

No.	REVISION	DATE	BY
1.	ISSUED FOR SPA	OCT 16/25	GJM

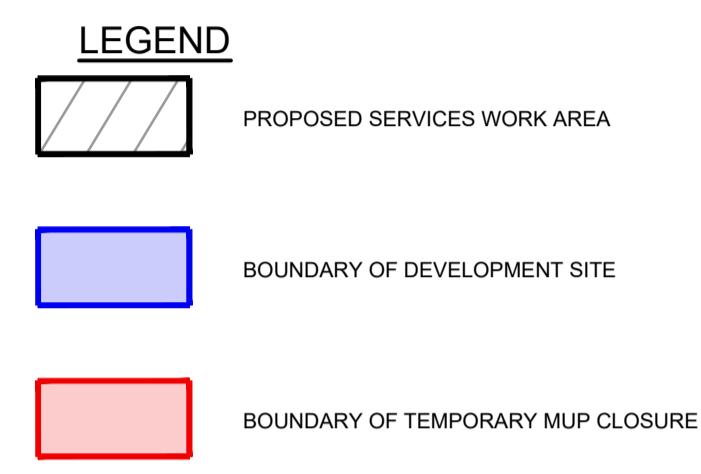
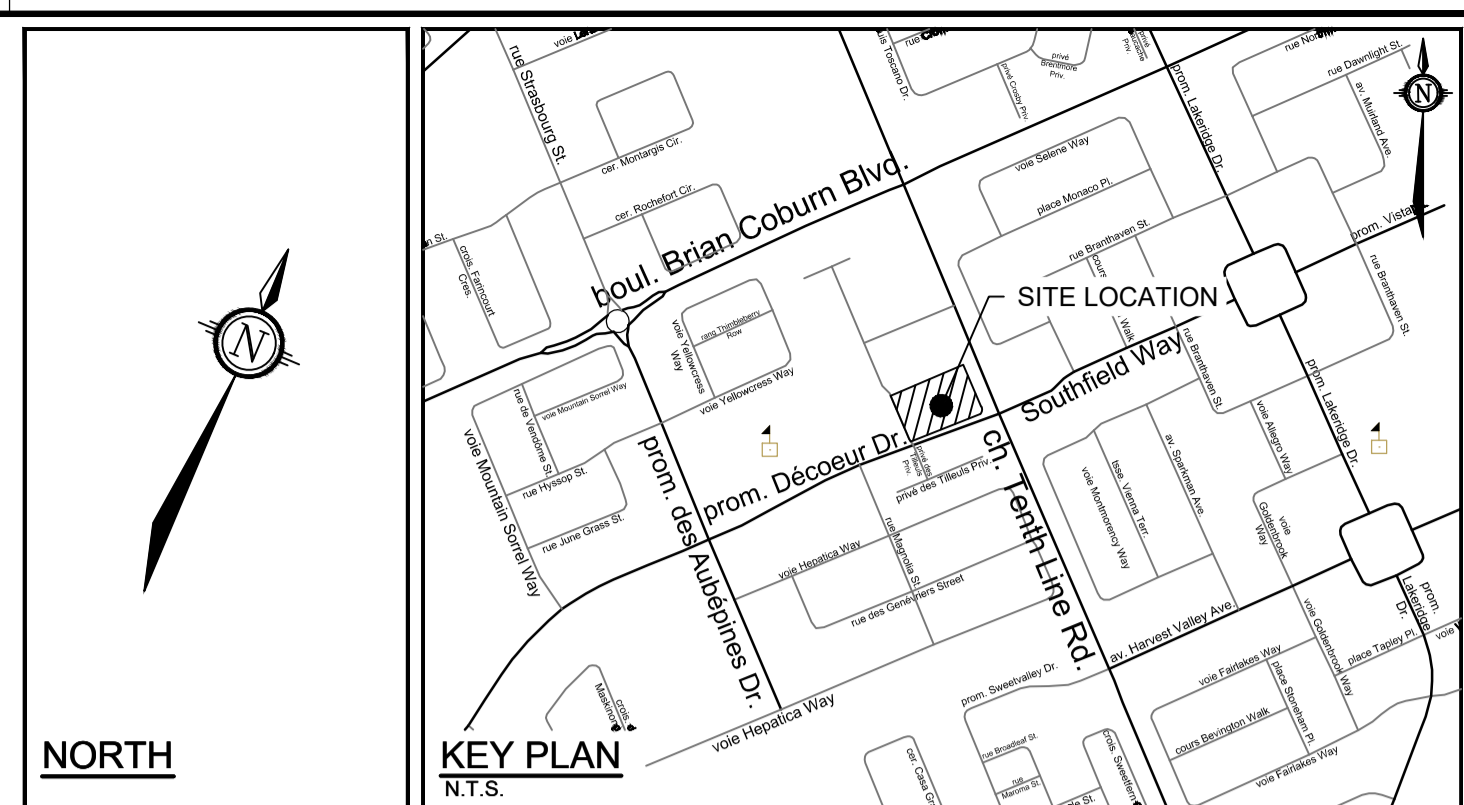
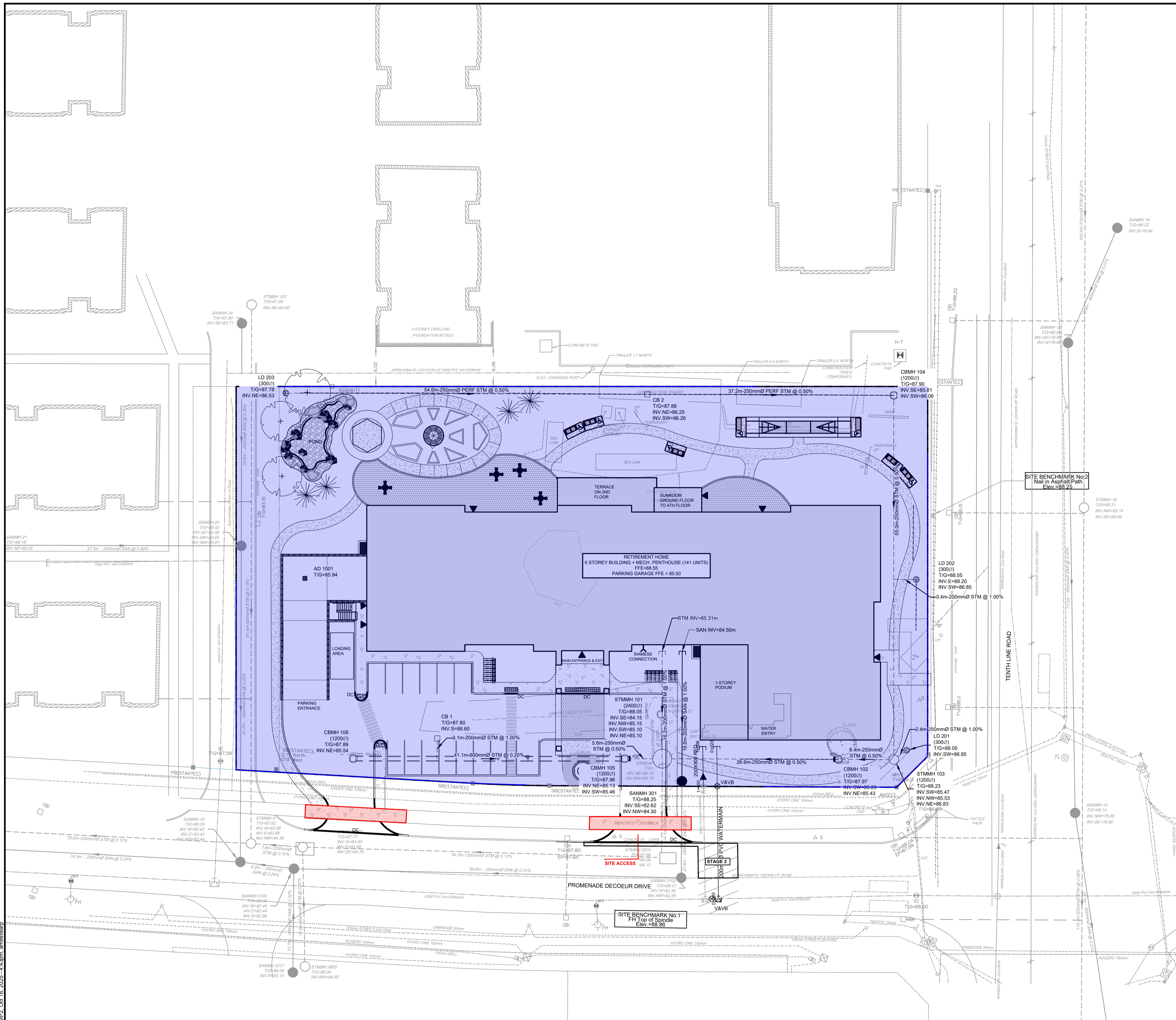


DESIGN	FOR REVIEW ONLY
ARM/AM	ISSUED FOR REVIEW
CHECKED	
ARM	
DRAWN	
ARM/AM	
CHECKED	
ARM	
APPROVED	
GJM	

NOVATECH
Engineers, Planners & Landscape Architects
Suite 200, 240 Michael Cowpland Drive
Ottawa, Ontario, Canada K2M 1P6
Telephone: (613) 254-9643
Facsimile: (613) 254-5867
Website: www.novatech-eng.com

REFER TO 125079-ND FOR ADDITIONAL NOTES & DETAILS	
LOCATION CITY OF OTTAWA 2380 TENTH LINE	PROJECT No. 125079
DRAWING NAME PRELIMINARY CONSTRUCTION MANAGEMENT PLAN 1	REV REV#1
	DRAWING No. 125079-CMP1

M:\2025\125079\CAD\Civil\125079-CMP1.dwg, C:\P1, Oct 16, 2025 - 4:13pm, amshwarp

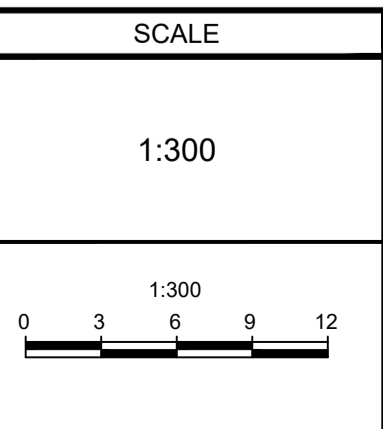


- CONSTRUCTION MANAGEMENT PLAN NOTES:**
- PROMENADE DECOEUR DRIVE IS A TWO WAY STREET COMPLETE WITH A LEFT TURN LANE EAST BOUND TOWARDS TENTH LINE. BUILDING SERVICES CONSTRUCTION WORK TO BE CONDUCTED IN TWO STAGES (STAGE 1 AND STAGES 2). BOTH STAGES WILL REQUIRE SECTIONS OF LANES BEING RESTRICTED DURING CONSTRUCTION.
 - STAGE 1 AND STAGE 2 CONSISTS OF RESTRICTING THE TRAFFIC IN FRONT OF THE DEVELOPMENT, CLOSING THE EASTBOUND THROUGH LANE AND LEFT TURN LANE, AND WESTBOUND LANE RESPECTIVELY. DURING THESE STAGES THE DEVELOPMENTS WATER SERVICES WILL BE INSTALLED. REFER TO 125079-CMP1 FOR STAGE 1.
 - PORTIONS OF PROMENADE DECOEUR DRIVE NORTHERN CONCRETE SIDEWALK IS TO BE CLOSED AND FOOT TRAFFIC TO BE REDIRECTED TO SOUTHERN SIDEWALK.
 - REFER TO 125079-CMP3 FOR TEMPORARY ROAD CLOSURE DETAILS.
 - A DETAILED CONSTRUCTION MANAGEMENT PLAN TO BE PREPARED AND PROVIDED BY THE CONTRACTOR, ONCE ONE IS RETAINED.

NOTE:
THE POSITION OF ALL POLE LINES, CONDUITS, WATERMANS, SEWERS AND OTHER UNDERGROUND AND OVERGROUND UTILITIES AND STRUCTURES IS NOT NECESSARILY SHOWN ON THE CONTRACT DRAWINGS, AND WHERE SHOWN, THE ACCURACY OF THE POSITION OF SUCH UTILITIES AND STRUCTURES IS NOT GUARANTEED. BEFORE STARTING WORK, DETERMINE THE EXACT LOCATION OF ALL SUCH UTILITIES AND STRUCTURES AND ASSUME ALL LIABILITY FOR DAMAGE TO THEM.

NOT FOR CONSTRUCTION

No.	REVISION	DATE	BY
1.	ISSUED FOR SPA	OCT 16/25	GJM



DESIGN	ARM/AM
CHECKED	ARM
DRAWN	ARM/AM
CHECKED	ARM
APPROVED	GJM

FOR REVIEW ONLY

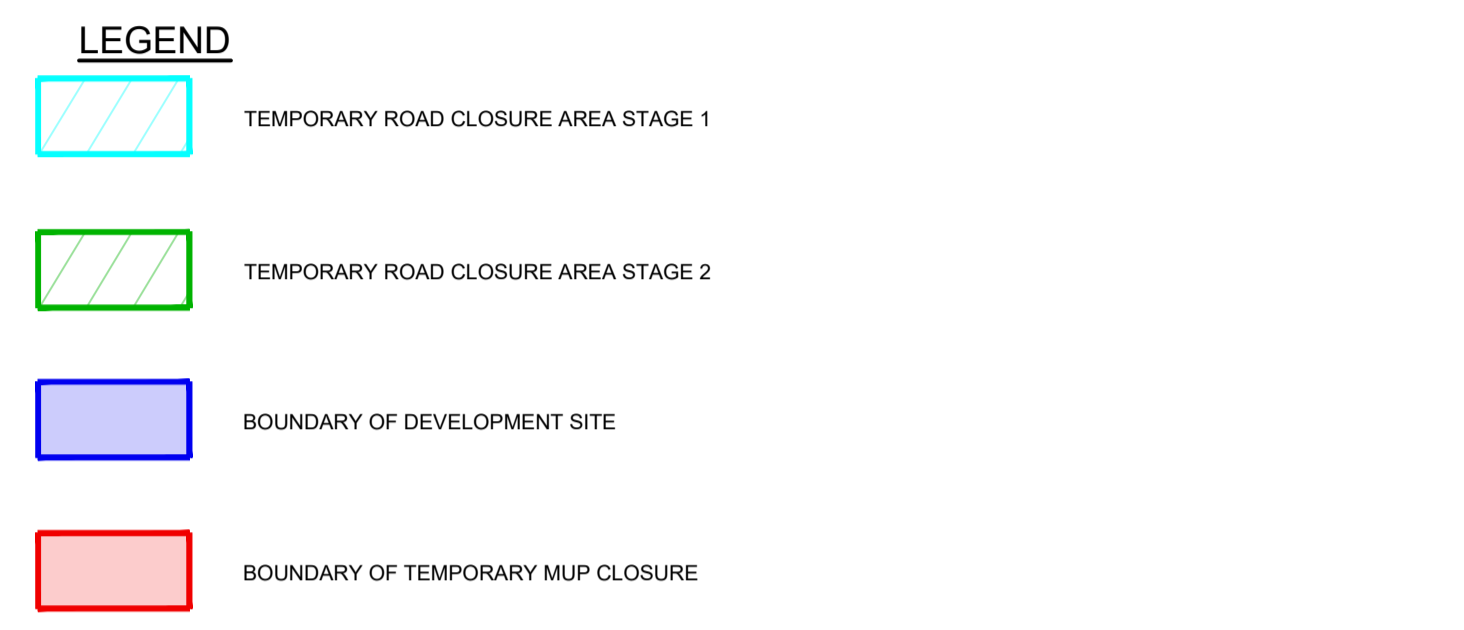
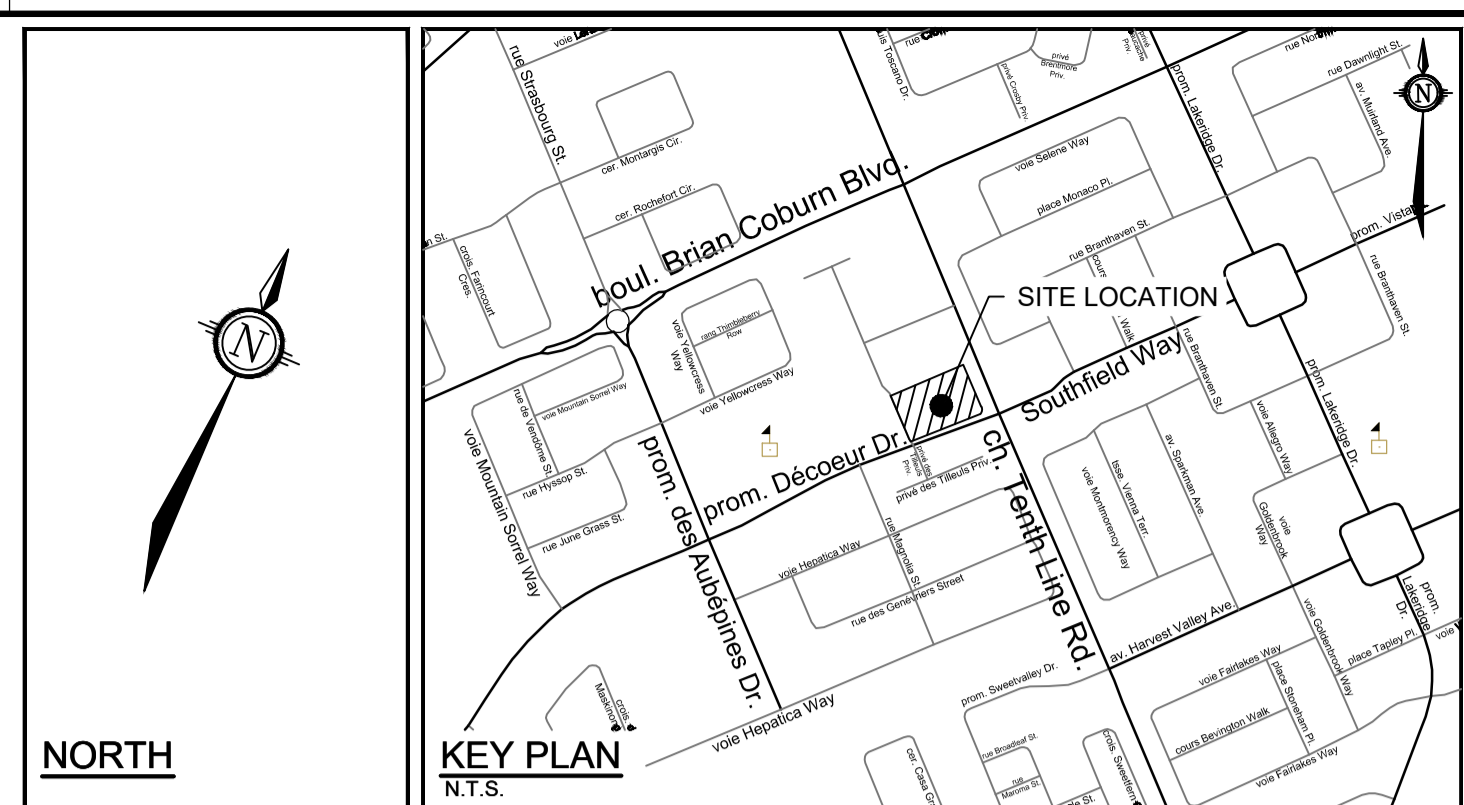
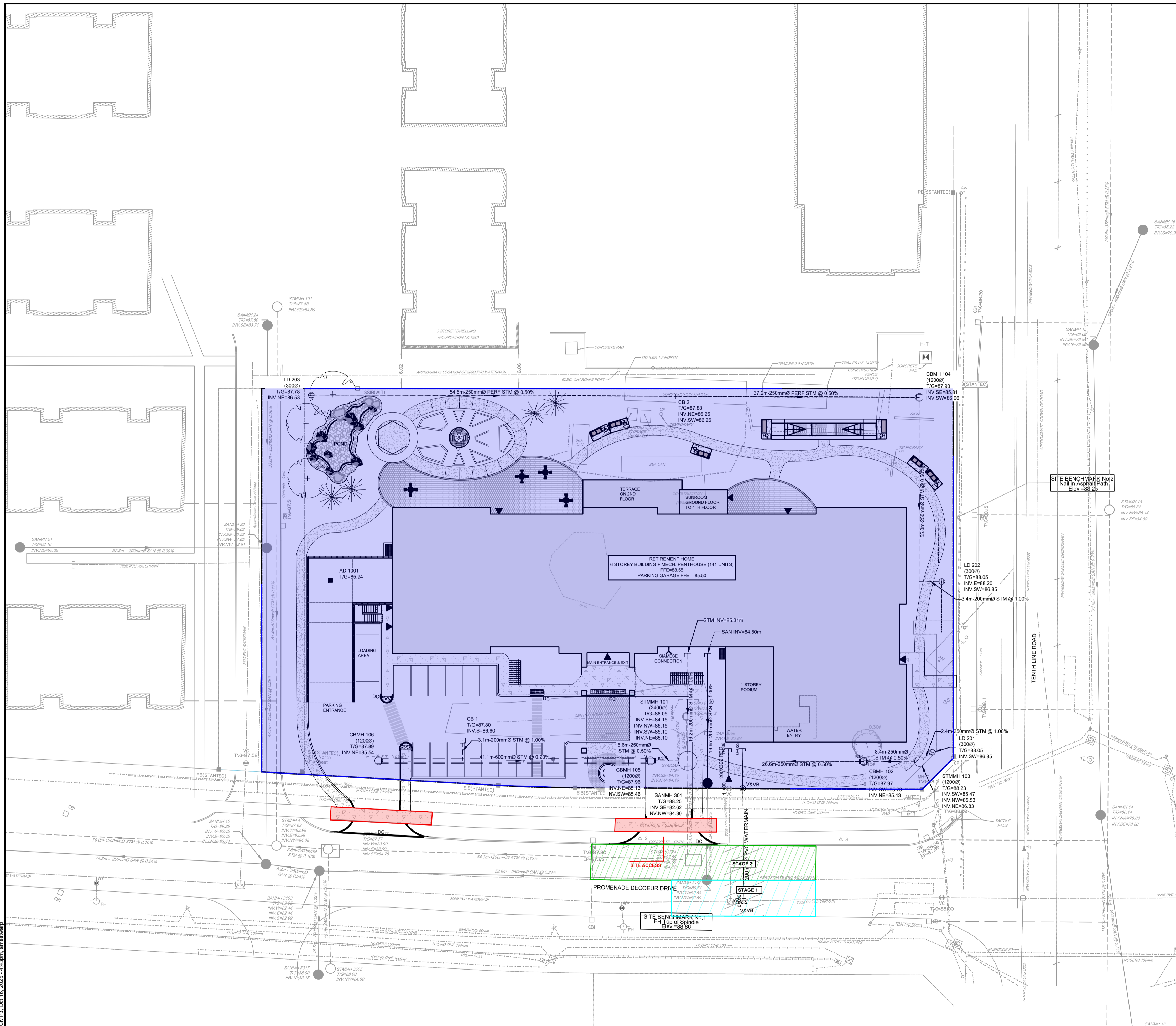
NOVATECH
Engineers, Planners & Landscape Architects
Suite 200, 240 Michael Cowpland Drive
Ottawa, Ontario, Canada K2M 1P6

Telephone: (613) 254-9643
Facsimile: (613) 254-5867
Website: www.novatech-eng.com

LOCATION CITY OF OTTAWA 2380 TENTH LINE		PROJECT No. 125079
DRAWING NAME PRELIMINARY CONSTRUCTION MANAGEMENT PLAN 2		REV REV#1
		DRAWING No. 125079-CMP2

REFER TO 125079-ND FOR ADDITIONAL NOTES & DETAILS

M:\2025\125079\CAD\Civil\125079-CMP2.dwg, CMP2, Oct 16, 2025 - 4:13pm, ameswarp



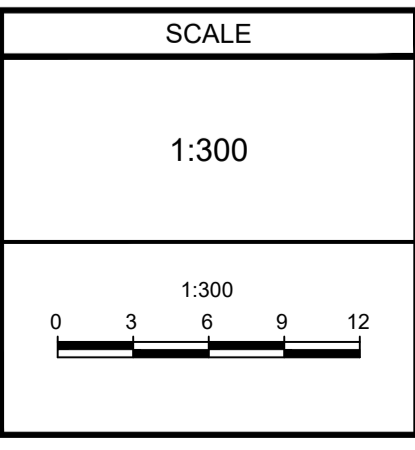
- CONSTRUCTION MANAGEMENT PLAN NOTES:**
- PROMENADE DECOEUR DRIVE IS A TWO WAY STREET COMPLETE WITH A LEFT TURN LANE EAST BOUND TOWARDS TENTH LINE. BUILDING SERVICES CONSTRUCTION WORK TO BE CONDUCTED IN TWO STAGES (STAGE 1 AND STAGES 2). BOTH STAGES WILL REQUIRE SECTIONS OF LANES BEING RESTRICTED DURING CONSTRUCTION.
 - STAGE 1 AND STAGE 2 CONSISTS OF RESTRICTING THE TRAFFIC IN FRONT OF THE DEVELOPMENT, CLOSING THE EASTBOUND THROUGH LANE AND LEFT TURN LANE, AND WESTBOUND LANE RESPECTIVELY. DURING THESE STAGES THE DEVELOPMENTS WATER SERVICES WILL BE INSTALLED. REFER TO 125079-CMP1 FOR STAGE 1.
 - PORTIONS OF PROMENADE DECOEUR DRIVE NORTHERN CONCRETE SIDEWALK IS TO BE CLOSED AND FOOT TRAFFIC TO BE REDIRECTED TO SOUTHERN SIDEWALK.
 - TEMPORARY ROAD CLOSURE FOR APPROXIMATELY 2 WEEK DURATION DURING CONSTRUCTION FOR STAGING AND BUILDING CONSTRUCTION. ALL NEIGHBOURING PRIVATE ACCESSES TO BE MAINTAINED DURING TEMPORARY ROAD CLOSURE.
 - A DETAILED CONSTRUCTION MANAGEMENT PLAN TO BE PREPARED AND PROVIDED BY THE CONTRACTOR, ONCE ONE IS RETAINED.

REFER TO 125079-ND FOR ADDITIONAL NOTES & DETAILS

NOTE:
 THE POSITION OF ALL POLE LINES, CONDUITS, WATERMANS, SEWERS AND OTHER UNDERGROUND AND OVERGROUND UTILITIES AND STRUCTURES IS NOT NECESSARILY SHOWN ON THE CONTRACT DRAWINGS, AND WHERE SHOWN, THE ACCURACY OF THE POSITION OF SUCH UTILITIES AND STRUCTURES IS NOT GUARANTEED. BEFORE STARTING WORK, DETERMINE THE EXACT LOCATION OF ALL SUCH UTILITIES AND STRUCTURES AND ASSUME ALL LIABILITY FOR DAMAGE TO THEM.

NOT FOR CONSTRUCTION

No.	REVISION	DATE	BY
1.	ISSUED FOR SPA	OCT 16/25	GJM



DESIGN	FOR REVIEW ONLY
ARM/AM	ISSUED FOR REVIEW
CHECKED	
DRAWN	
APPROVED	

NOVATECH
 Engineers, Planners & Landscape Architects
 Suite 200, 240 Michael Cowpland Drive
 Ottawa, Ontario, Canada K2M 1P6
 Telephone: (613) 254-9643
 Facsimile: (613) 254-5867
 Website: www.novatech-eng.com

LOCATION CITY OF OTTAWA 2380 TENTH LINE		PROJECT No. 125079
DRAWING NAME PRELIMINARY CONSTRUCTION MANAGEMENT PLAN 3		REV REV#1
		DRAWING No. 125079-CMP3

M:\2025\125079\CAD\Civil\125079-CMP3.dwg, Oct 16, 2025 - 4:43pm, ameswarp